

# NEW MEXICO COVID-19 HOSPITALIZATION UPDATE

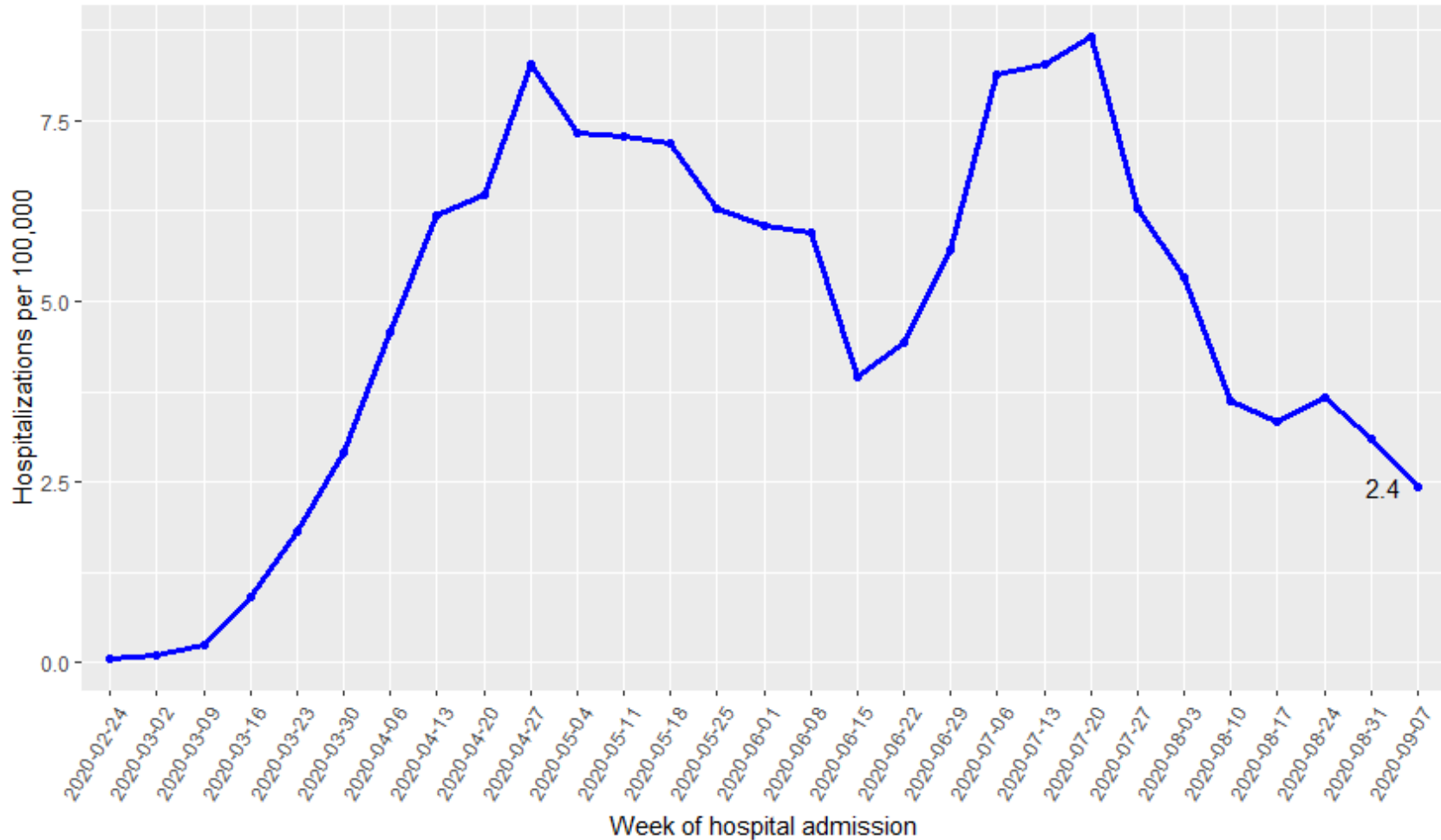
September 14<sup>th</sup>, 2020

Unless stated otherwise, all data reported here exclude hospitalized patients who are from out-of-state and hospitalized patients who are federal detainees held in private prisons in New Mexico.

| Total Hospital Admissions                                     | Hospital Admissions in the Last 7 Days |
|---------------------------------------------------------------|----------------------------------------|
| 2,946                                                         | 51                                     |
| Total number and percentage of hospitalized patients who died | 572 (19.4%)                            |

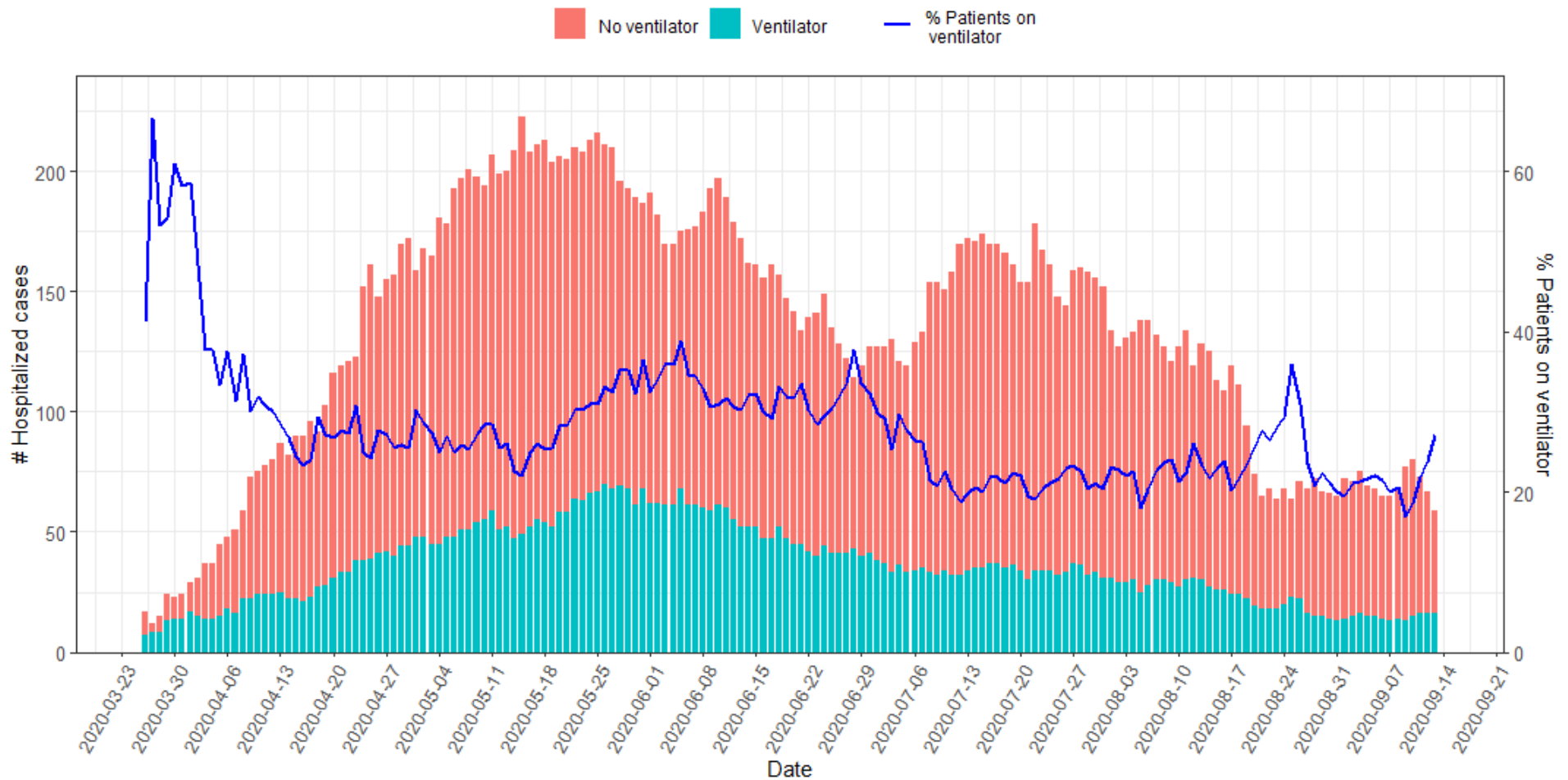
## SECTION 1: STATEWIDE AND COUNTY-LEVEL HOSPITALIZATION RATES

New hospital admissions per 100,000 population each week



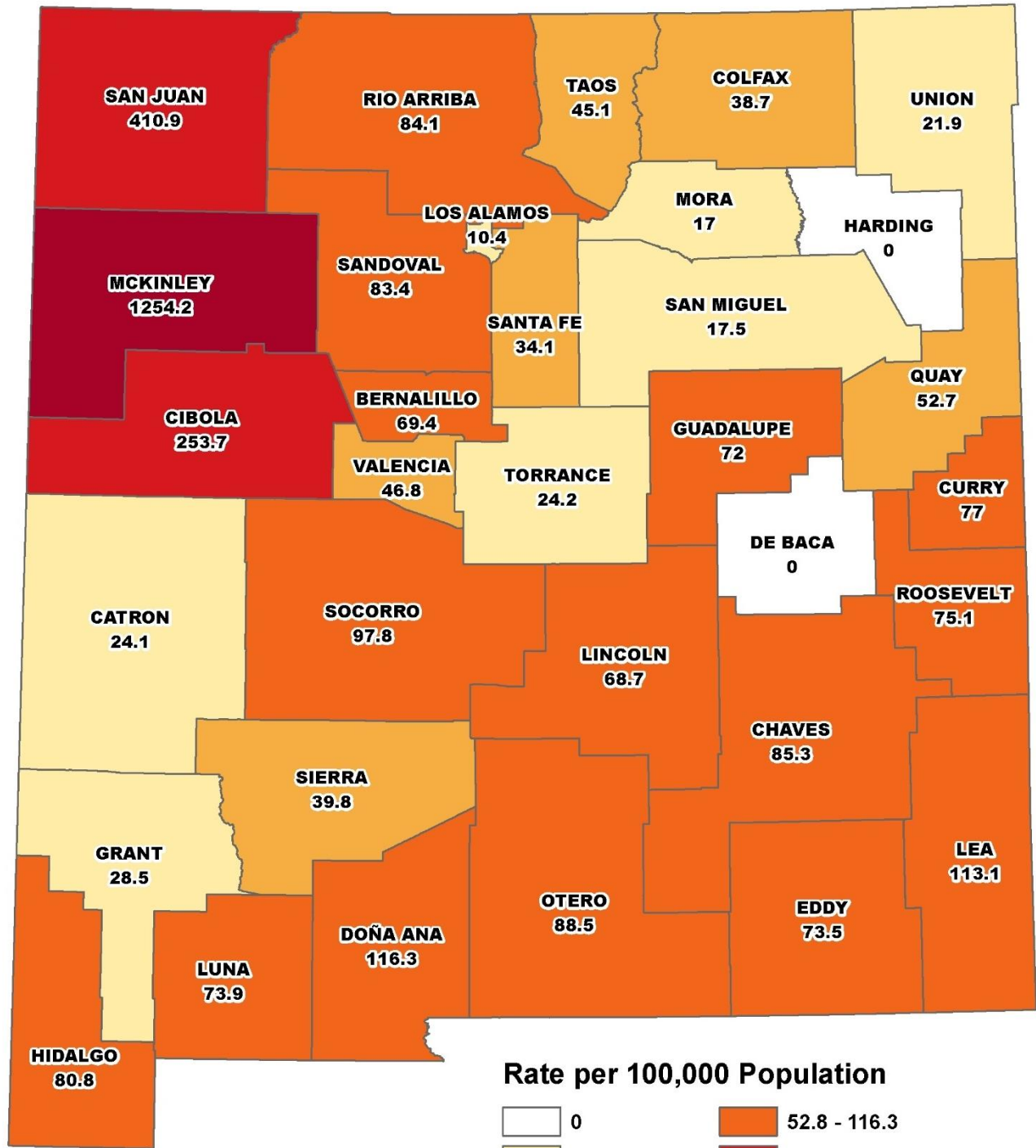
35 cases with missing hospital admission dates were excluded. Hospital admissions during the week of 9/7/2020 may not yet be reported.

## Daily number of reported hospitalized cases and percentage requiring ventilator



The daily number of hospitalizations includes patients who are ICE detainees. For each day, the number of hospitalized patients is separated into those who are on ventilators (green bars) and those patients who are not on ventilators (red bars). The blue line indicates the percentage of daily hospitalized patients on ventilator each day.

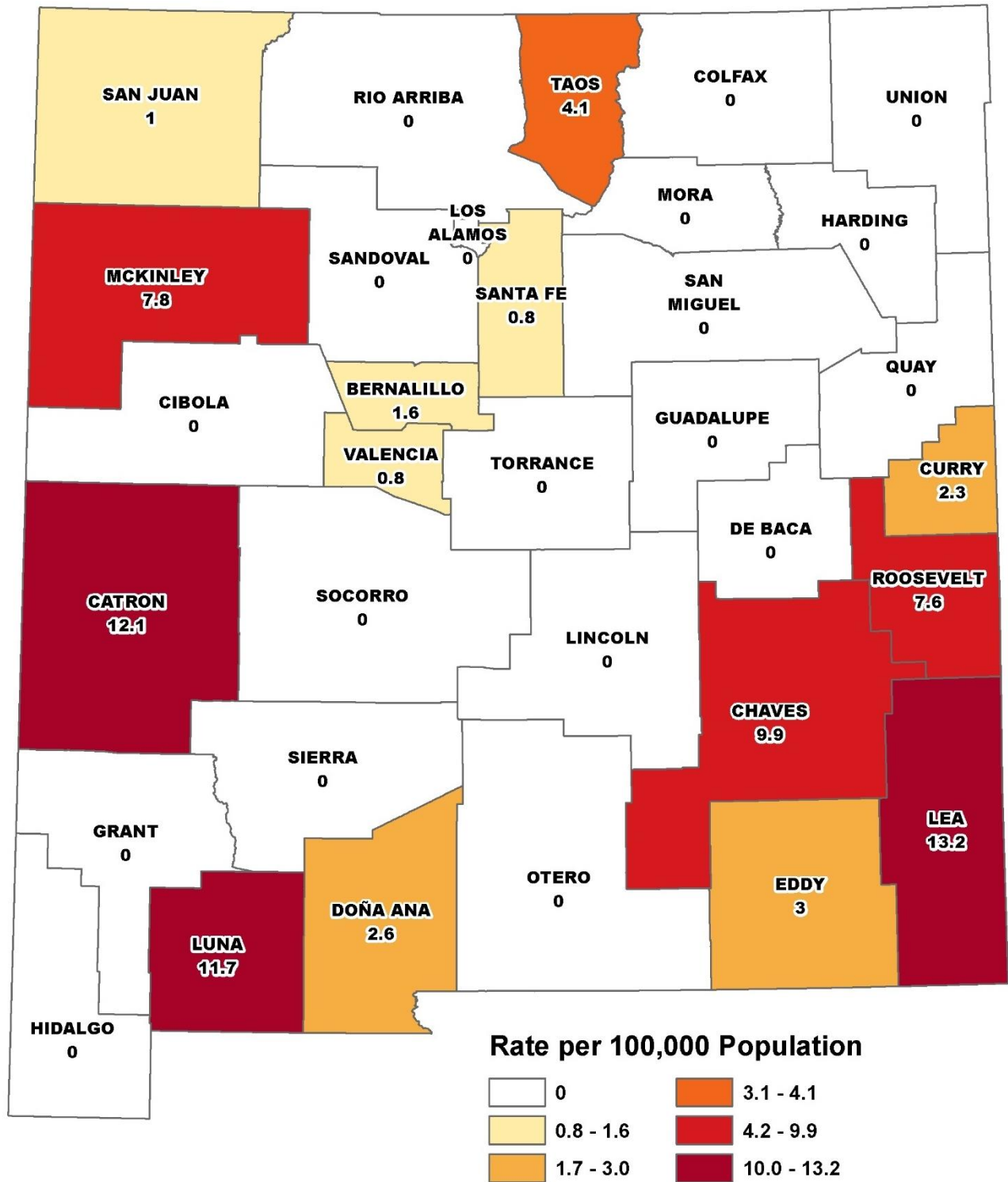
# Cumulative age-adjusted hospital admissions per 100,000 by New Mexico County



## Rate per 100,000 Population



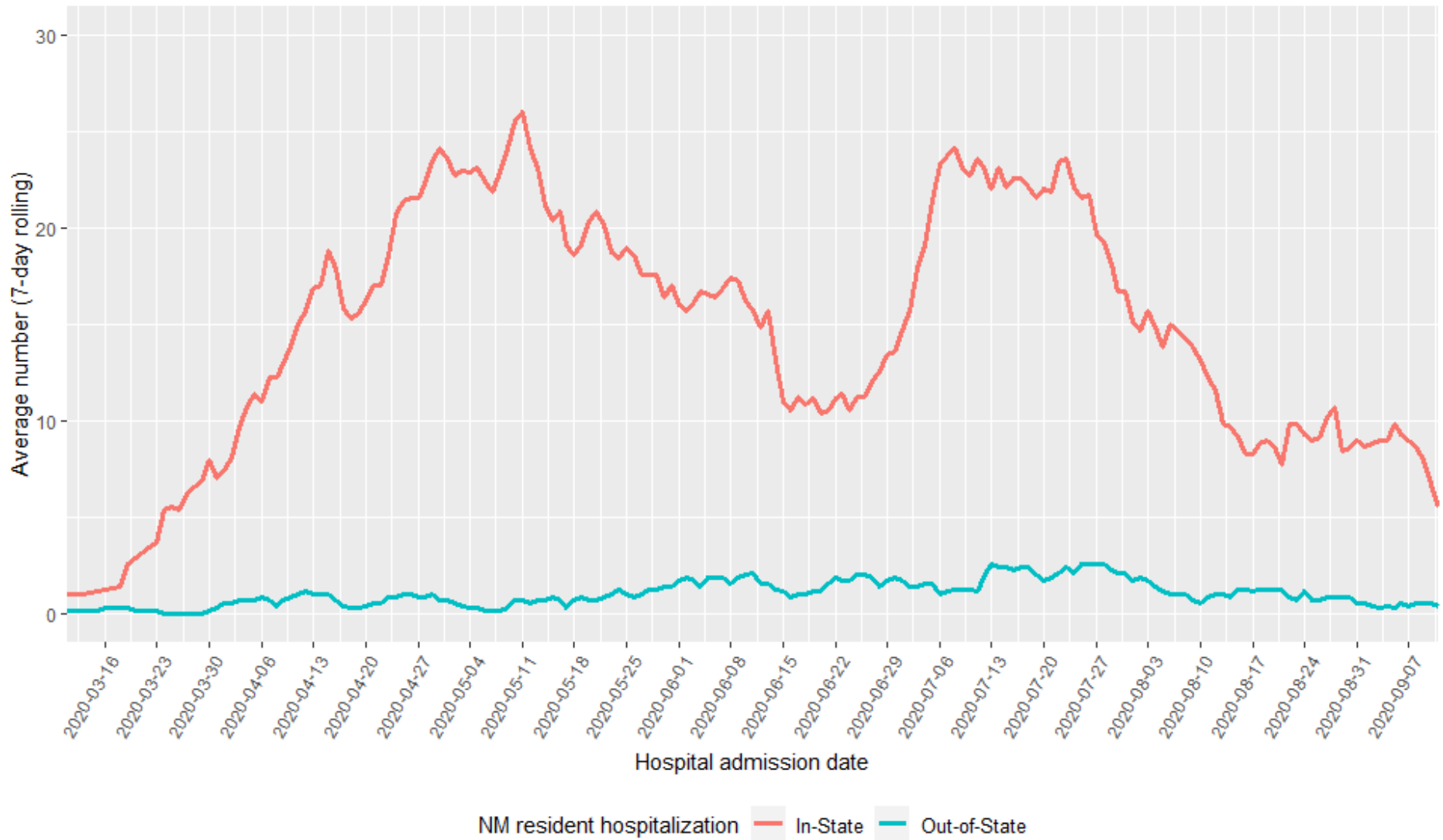
**New age-adjusted hospital admissions per 100,000 population by New Mexico County in the last 7 days (9/7-9/13)**



Hospital admissions during the week of 9/7/2020 may not yet be reported.

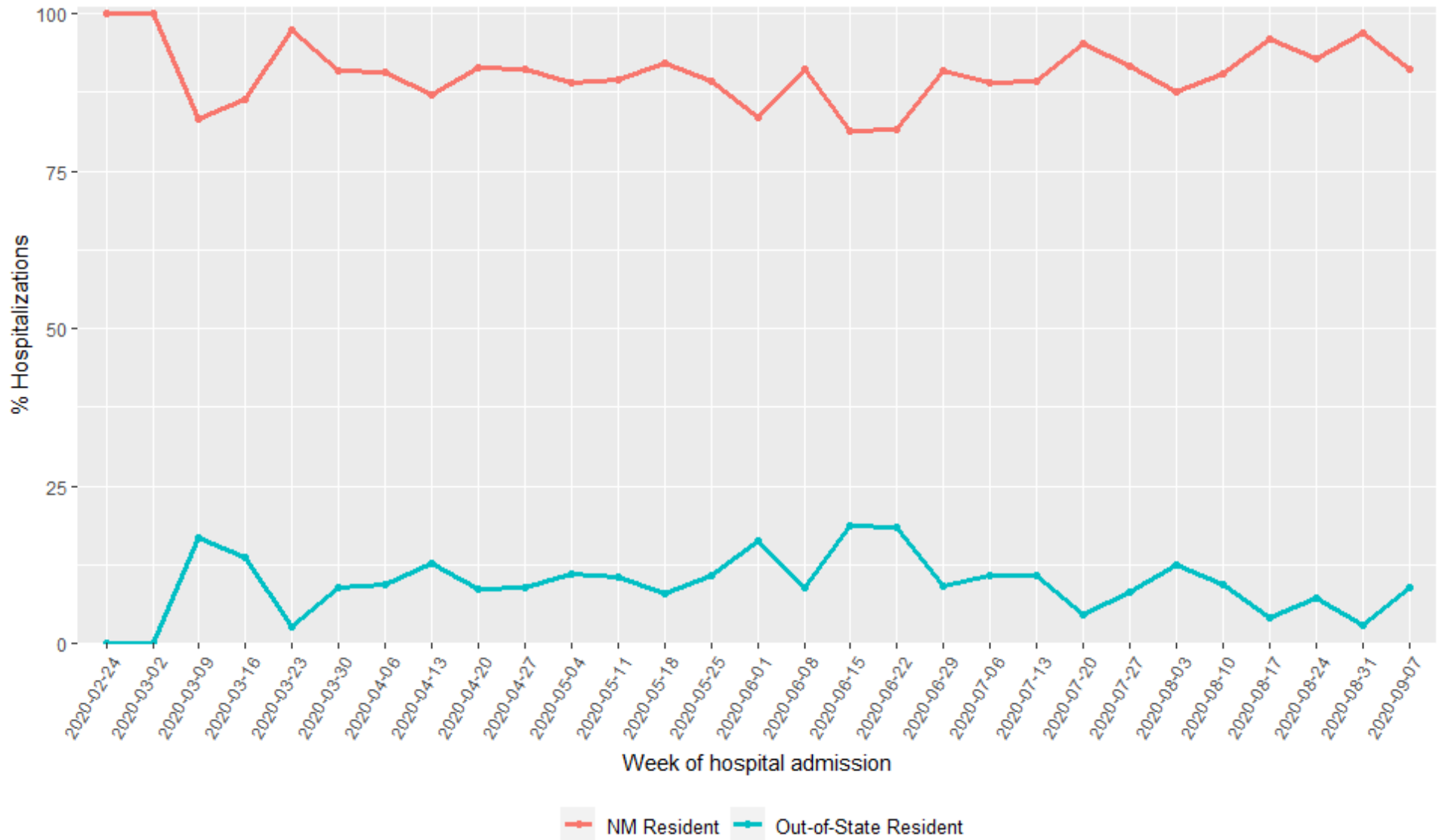
## SECTION 2: NEW MEXICO AND OUT-OF-STATE RESIDENT HOSPITALIZATIONS

Daily number of New Mexico residents hospitalized in-state and out-of-state (7-day rolling average)



35 cases with missing hospital admission dates were excluded. Hospital admissions during the week of 9/7/2020 may not yet be reported.

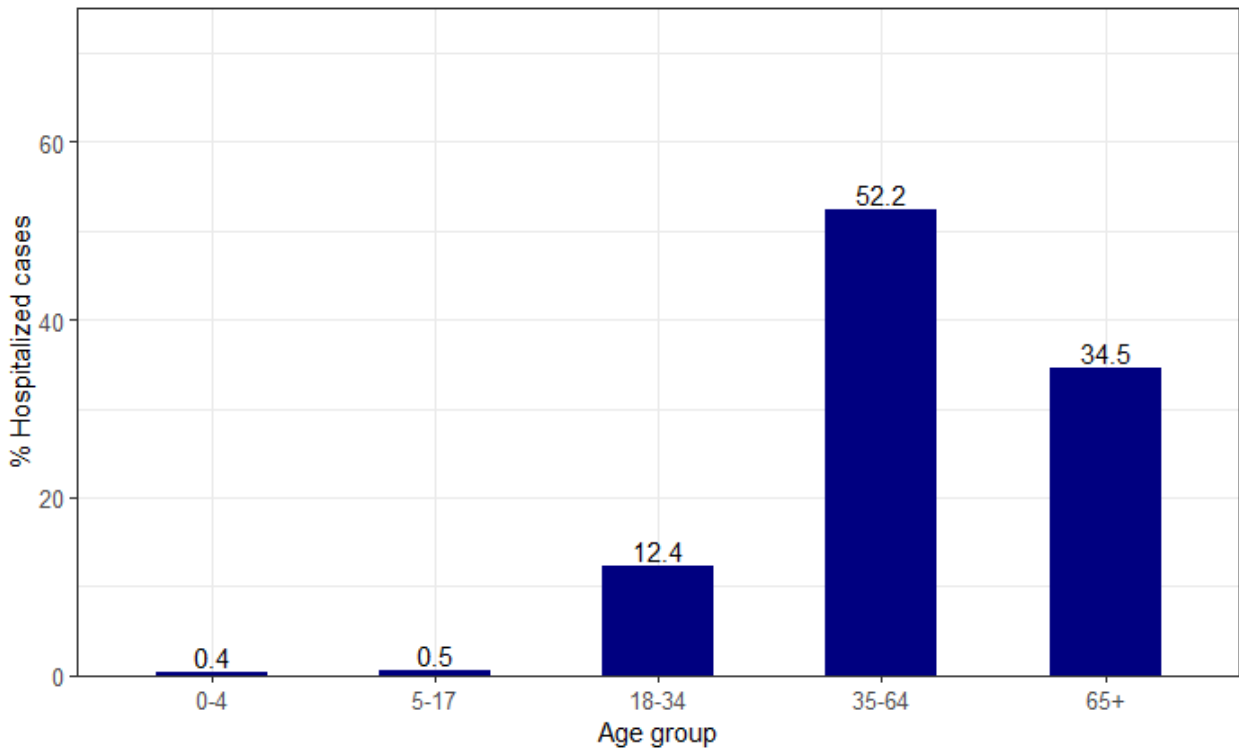
### Percentage of new hospital admissions of out-of-state residents in New Mexico each week



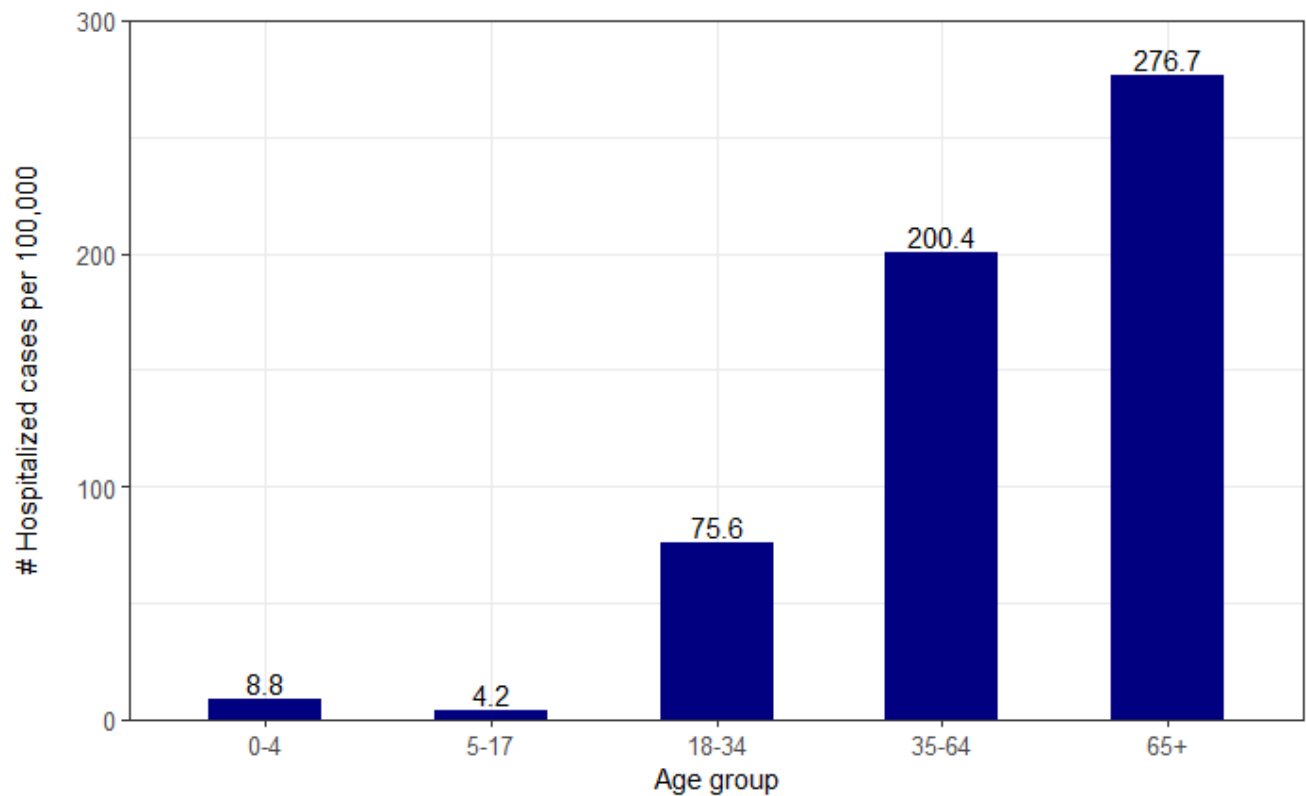
35 cases with missing hospital admission dates were excluded. Hospital admissions during the week of 9/7/2020 may not yet be reported. For each hospital admission week, the sum of the percentages for each age group is 100%.

## SECTION 3: AGE

### Percentage of all hospitalized cases by age

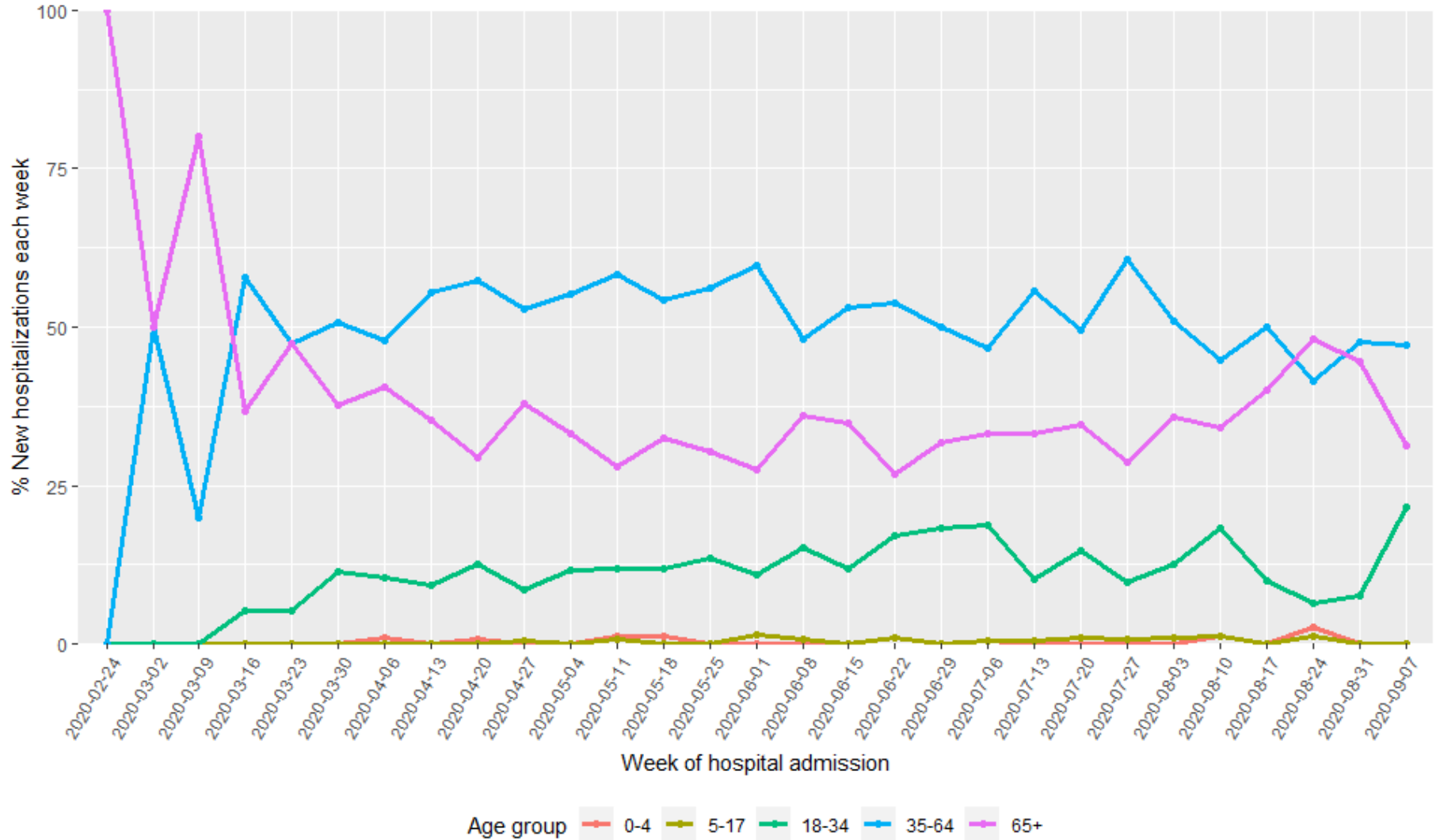


### Cumulative hospitalization rate per 100,000 population by age





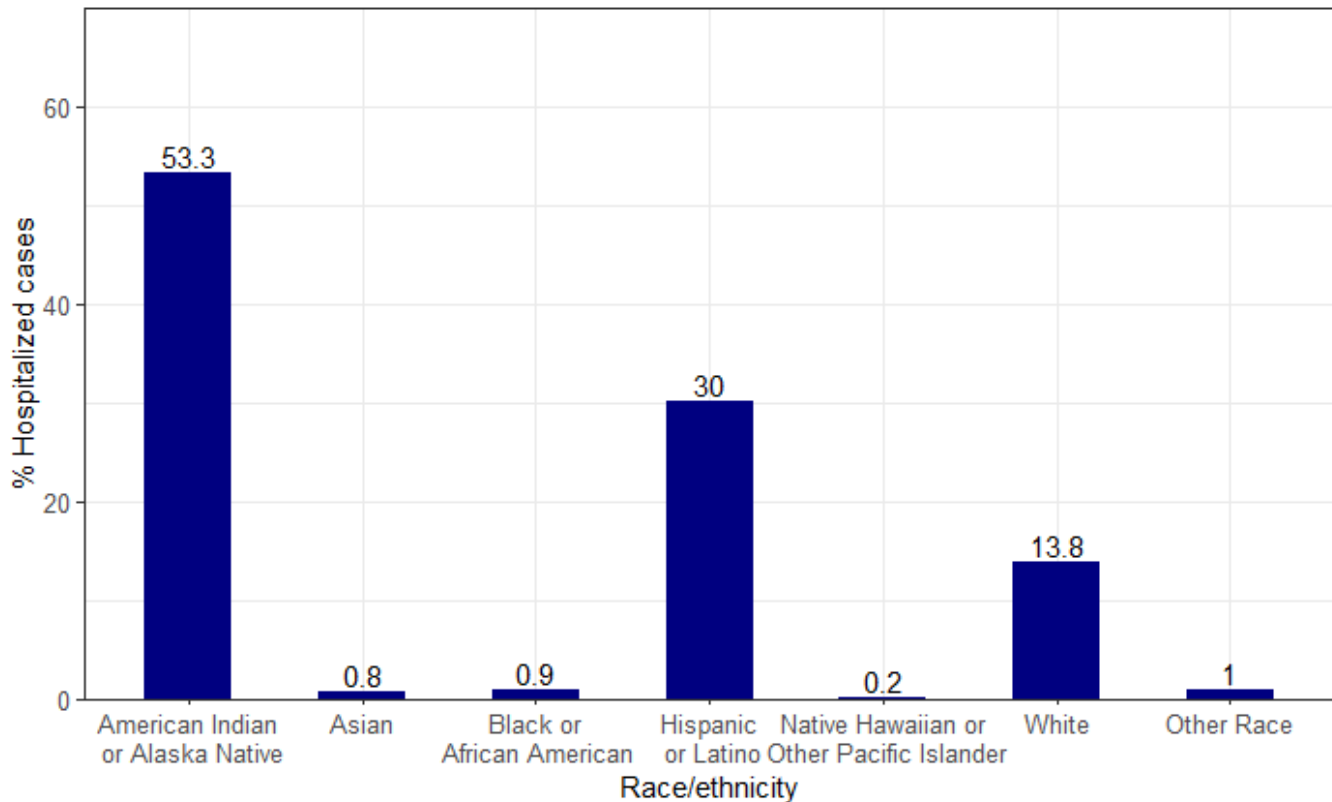
## Percentage of new hospital admissions each week by age



35 cases with missing hospital admission dates were excluded. Hospital admissions during the week of 9/7/2020 may not yet be reported. For each hospital admission week, the sum of the percentages for each age group is 100%.

## SECTION 4: RACE/ETHNICITY

### Percentage of all hospitalizations by race/ethnicity



33 hospitalized cases with missing race/ethnicity information were excluded. 1 case who self-identified as “Refused to answer” was also excluded.

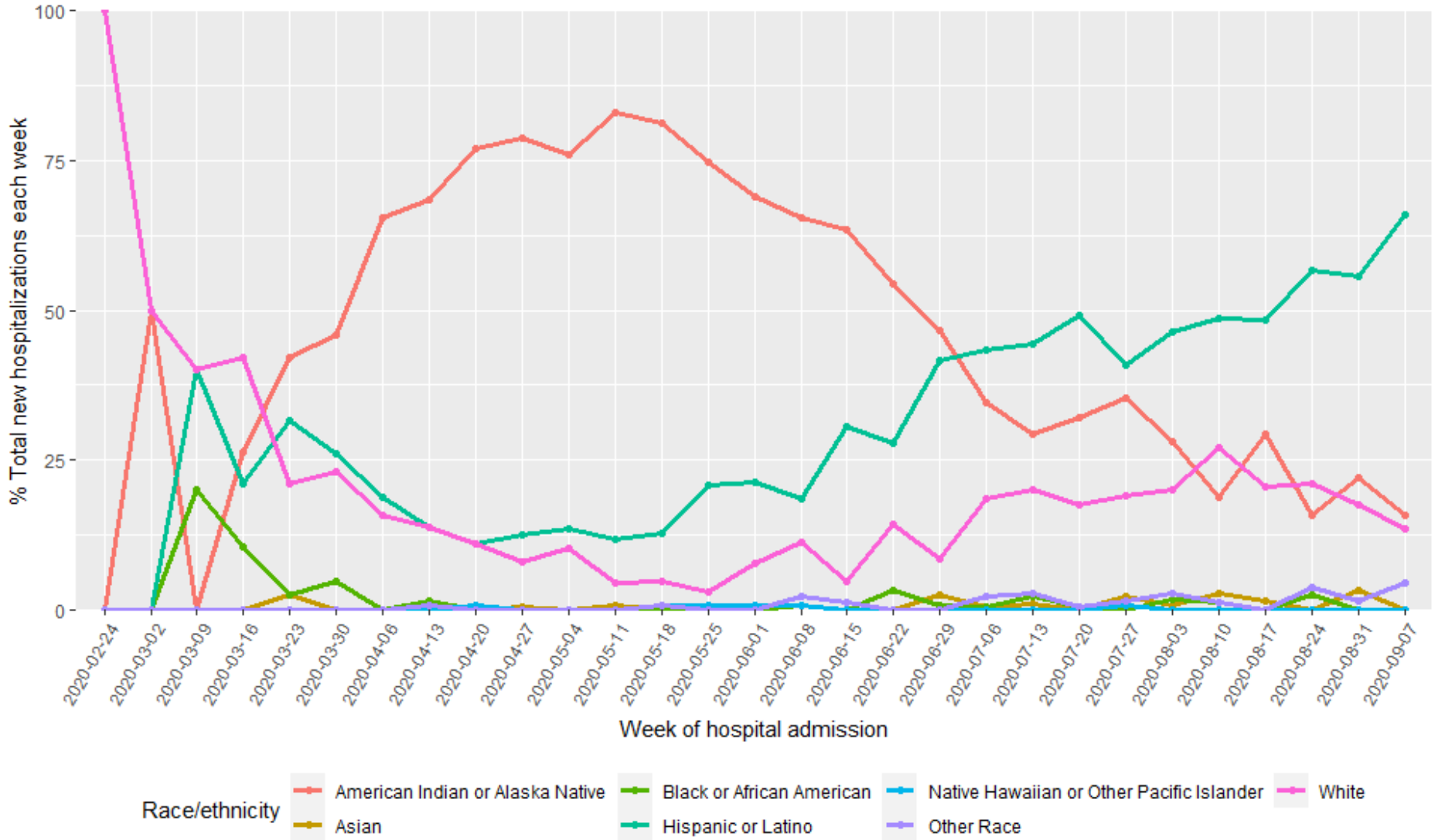
### Cumulative age-adjusted hospitalization rate per 100,000 population by race/ethnicity

| Race/ethnicity                   | Hospitalization rate per 100,000 |
|----------------------------------|----------------------------------|
| American Indian or Alaska Native | 865.0                            |
| Asian or Pacific Islander        | 71.2                             |
| Black or African American        | 63.2                             |
| Hispanic or Latino               | 89.9                             |
| White                            | 33.8                             |

33 hospitalized cases with missing race/ethnicity information were excluded. 29 cases who self-identified as Other Race or Refused to answer were also excluded.

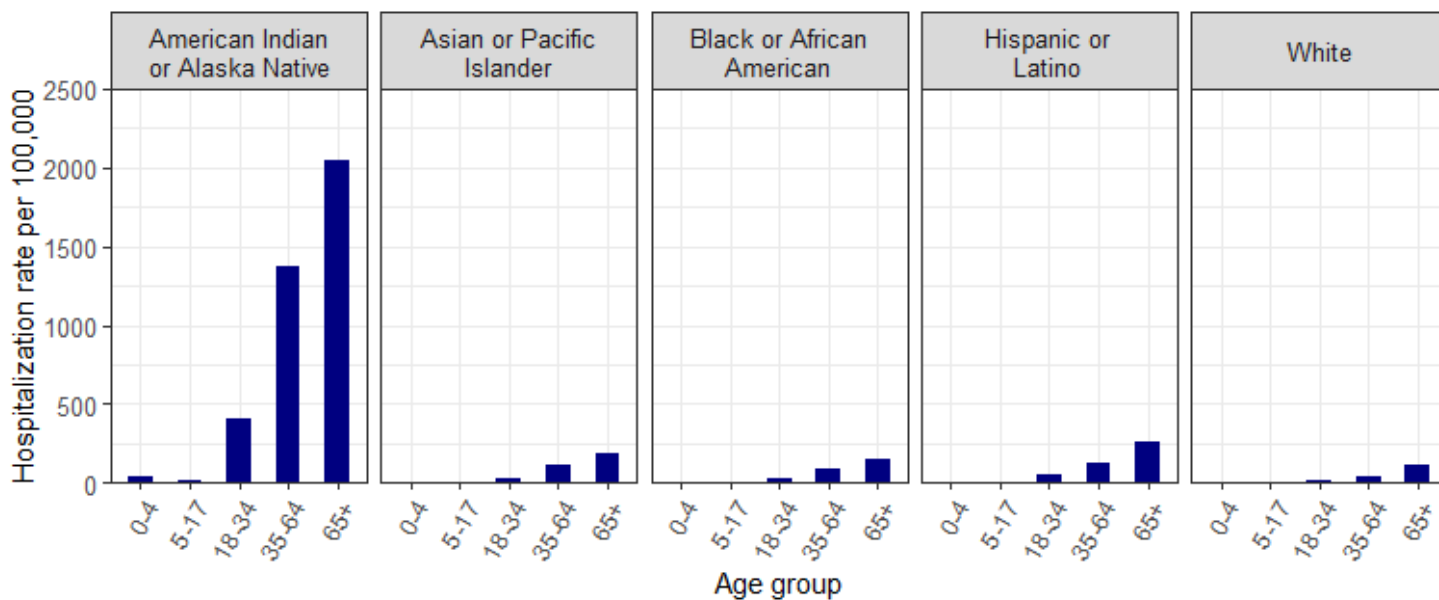
Due to the small numbers of hospitalizations and lower population sizes of Asian or Pacific Islanders and Black or African Americans in New Mexico, the hospitalization rate per 100,000 population for these two groups are currently considered unreliable and should be interpreted with caution.

## Percentage of new hospital admissions each week by race/ethnicity

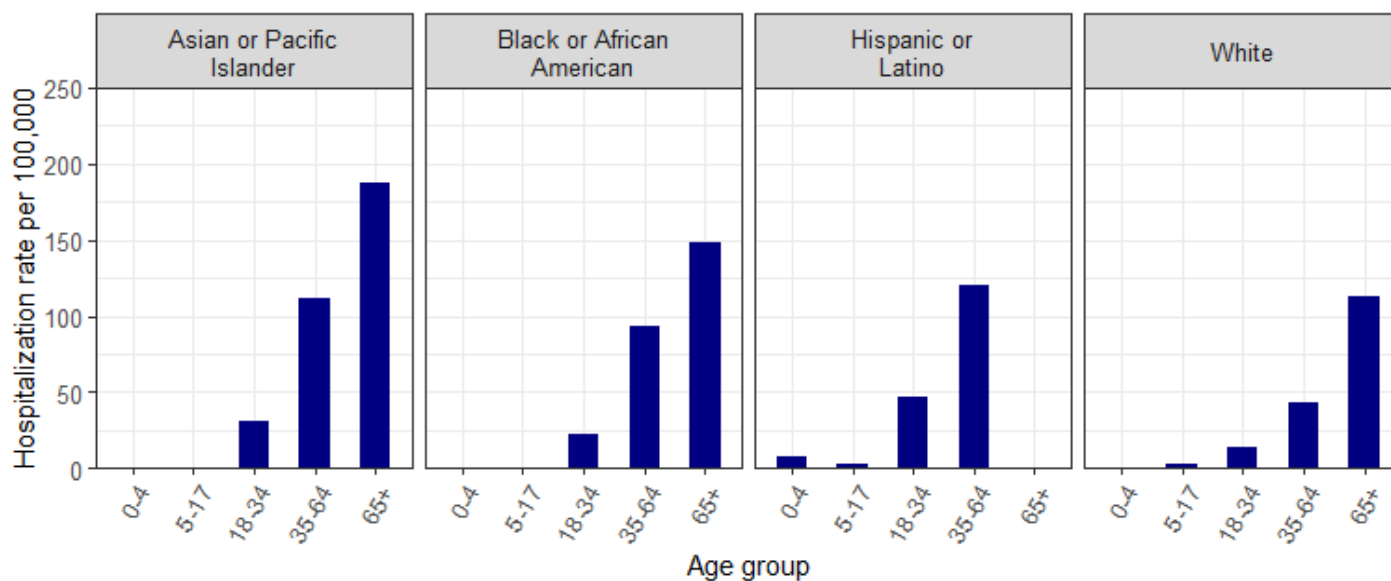


69 cases with missing race/ethnicity (including “Refused to answer”) or hospital admission date information were excluded. Hospital admissions during the week of 9/7/2020 may not yet be reported. For each hospital admission week, the sum of the percentages for each race/ethnicity group is 100%.

## Cumulative hospitalization rate per 100,000 population by race and ethnicity and age



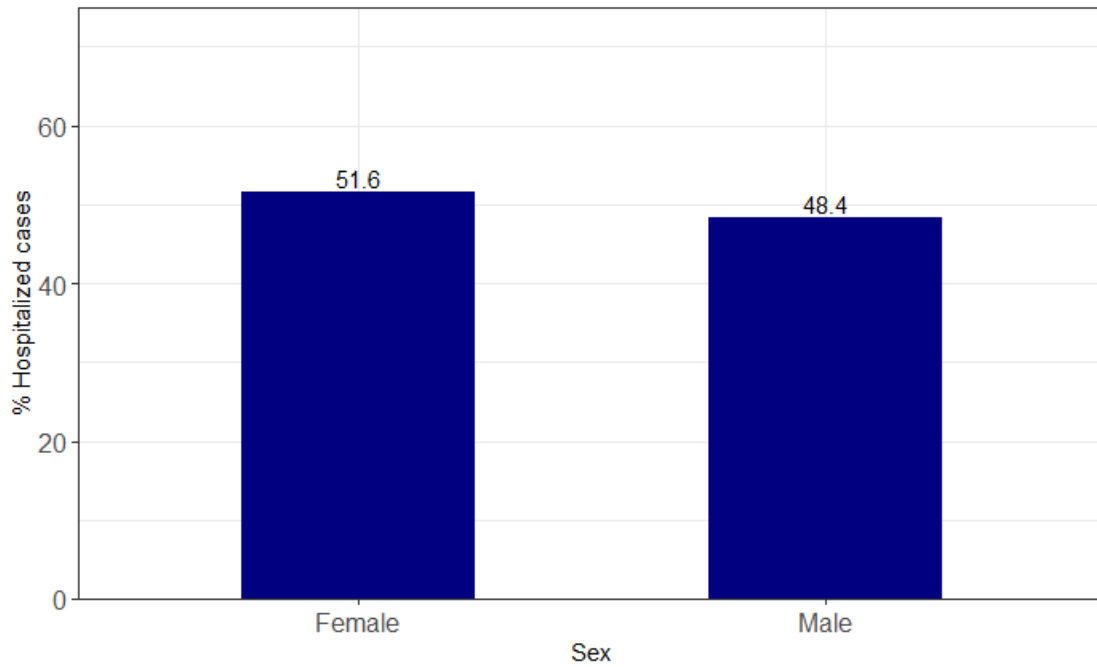
The following figure excludes American Indian or Alaska Native to illustrate in more detail the hospitalization rate per 100,000 population of the other race and ethnicity groups.



33 hospitalized cases with missing race/ethnicity information were excluded. 29 cases who self-identified as Other Race or Refused to answer were also excluded.

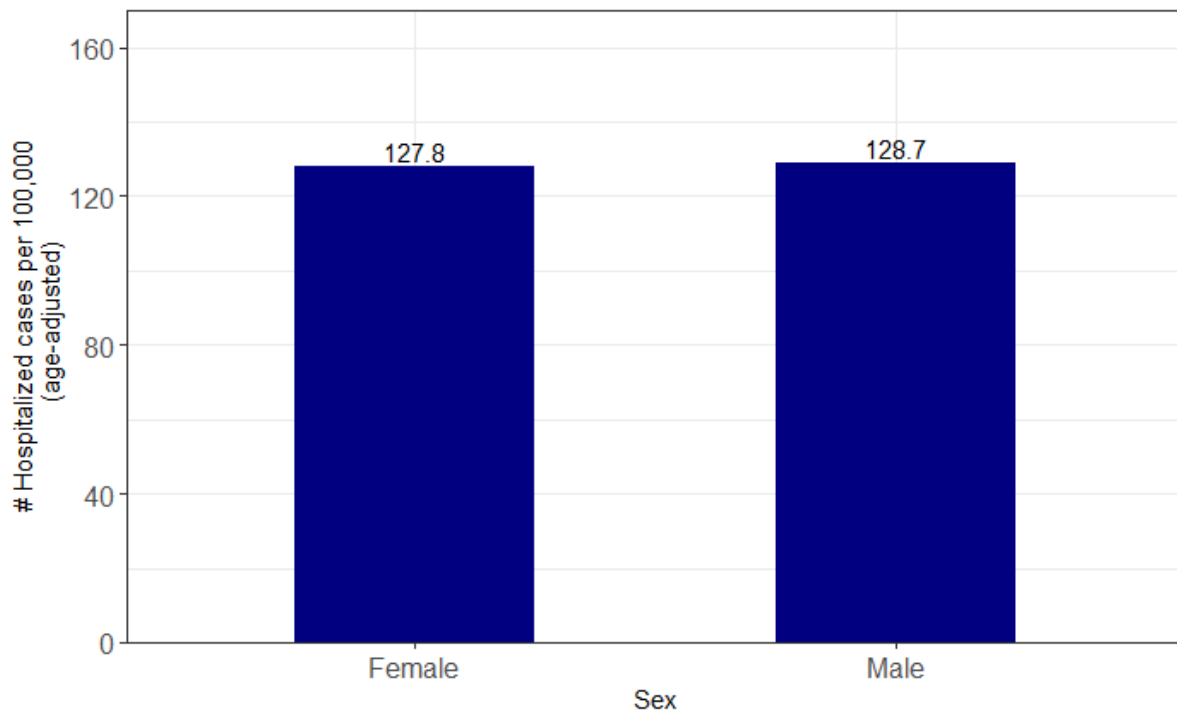
## SECTION 5: SEX

### Percentage of all hospitalizations by sex



13 hospitalized cases with unknown or missing sex information were excluded.

### Cumulative age-adjusted hospitalization rate per 100,000 population by sex



13 hospitalized cases with unknown or missing sex information were excluded.

## Data Sources

- **COVID-19 data:** New Mexico Electronic Disease Surveillance System (NM-EDSS), Infectious Disease Epidemiology Bureau, Epidemiology and Response Division, New Mexico Department of Health.
- **Population Estimates:** University of New Mexico, Geospatial and Population Studies (GPS) Program.
- **Age-adjustment:** US 2000 Standard Population Weights

## Data Notes

- **The data reported in this weekly update may not match the daily numbers that are reported in the New Mexico Department of Health (NMDOH) press releases and/or the NMDOH COVID-19 data dashboard. This may be due to variation in the date and time of data extraction from NM-EDSS, corrections after quality assurance review, and differences in the exclusion criteria.**
- **New Mexico Electronic Disease Surveillance System (NM-EDSS).** Disease incidence data are derived from reports of notifiable infectious diseases. NMDOH relies on health care providers, laboratories, hospitals, clinics, institutions and individuals to report suspected and confirmed notifiable infectious diseases in accordance with New Mexico Administrative Code 7.4.3.13. Under-reporting can occur due to of lack of awareness about reporting requirements or lack of compliance with those requirements. Not all cases of infectious diseases can be detected for various reasons including lack of access to health care services, lack of laboratory testing or concerns about confidentiality. Specific and standardized national case definitions are used to classify disease reports by case status.
- **New Mexico Population Estimates.** All population estimates apply to July 1 of 2018. Estimates include decimal fractions. The sum of population subgroup estimates may not exactly equal the overall state population estimate due to rounding error. Population estimates for previous years are occasionally revised as new information becomes available. When publishing trend data, always be sure that your rates for earlier years match current rates on NM-IBIS that have been calculated with the most up-to-date population estimates.
- **Race/ethnicity.** Race and ethnicity are reported as a single variable, race/ethnicity, according to the selection of the case. Any case who is Hispanic is in the Hispanic category and all other races are non-Hispanic.
- **Hospitalization rate per 100,000 population.** A basic measure of disease-specific hospitalization frequency is a rate, which takes into account the number of hospitalizations and the population size. It is helpful in making public health decisions for a given population, relative to another population regardless of size.
- **Age-adjusted hospitalization rate per 100,000 population.** The age-distribution of a population (the number of people in particular age categories) can change over time and can be different in different geographic areas. The use of age-adjusted rates permits a valid comparison among populations. It ensures that the differences in hospitalizations from one population to another are not due to differences in the age distribution of the populations being compared.