

New Mexico COVID-19 Cases Update

HEALTH AND SOCIAL CHARACTERISTICS

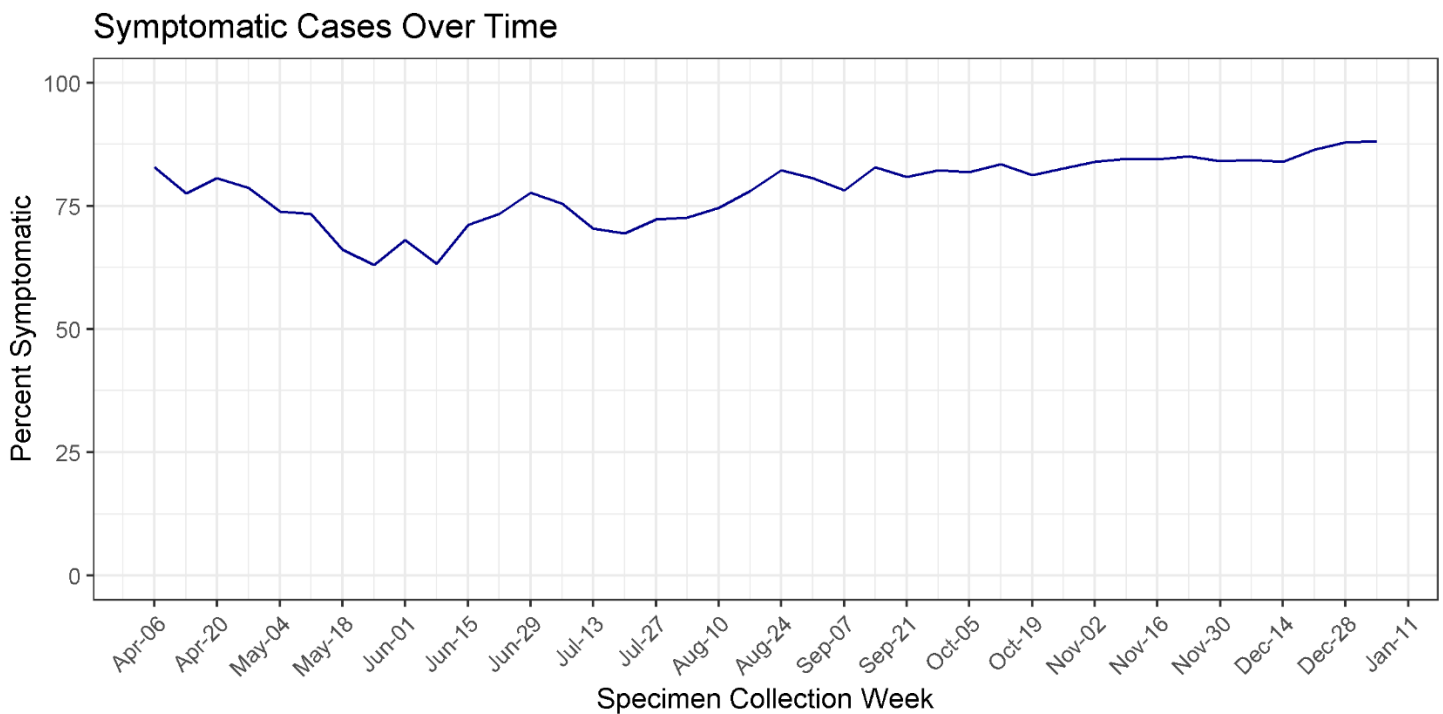
January 11th, 2021

Unless stated otherwise, all data reported here exclude cases who are from out-of-state and cases who are detainees in Federal Immigration and Customs Enforcement (ICE) facilities.

Total Cases	Cases in the Last 7 Days
157,087 ¹	9,751

SECTION 1: SYMPTOMS

Percentage of cases reporting symptoms each week



Data from the previous week is excluded, as positive tests during this time may not yet be reported or investigated.

¹ Total cases, as reported on cv.nmhealth.org, include ICE detainees.

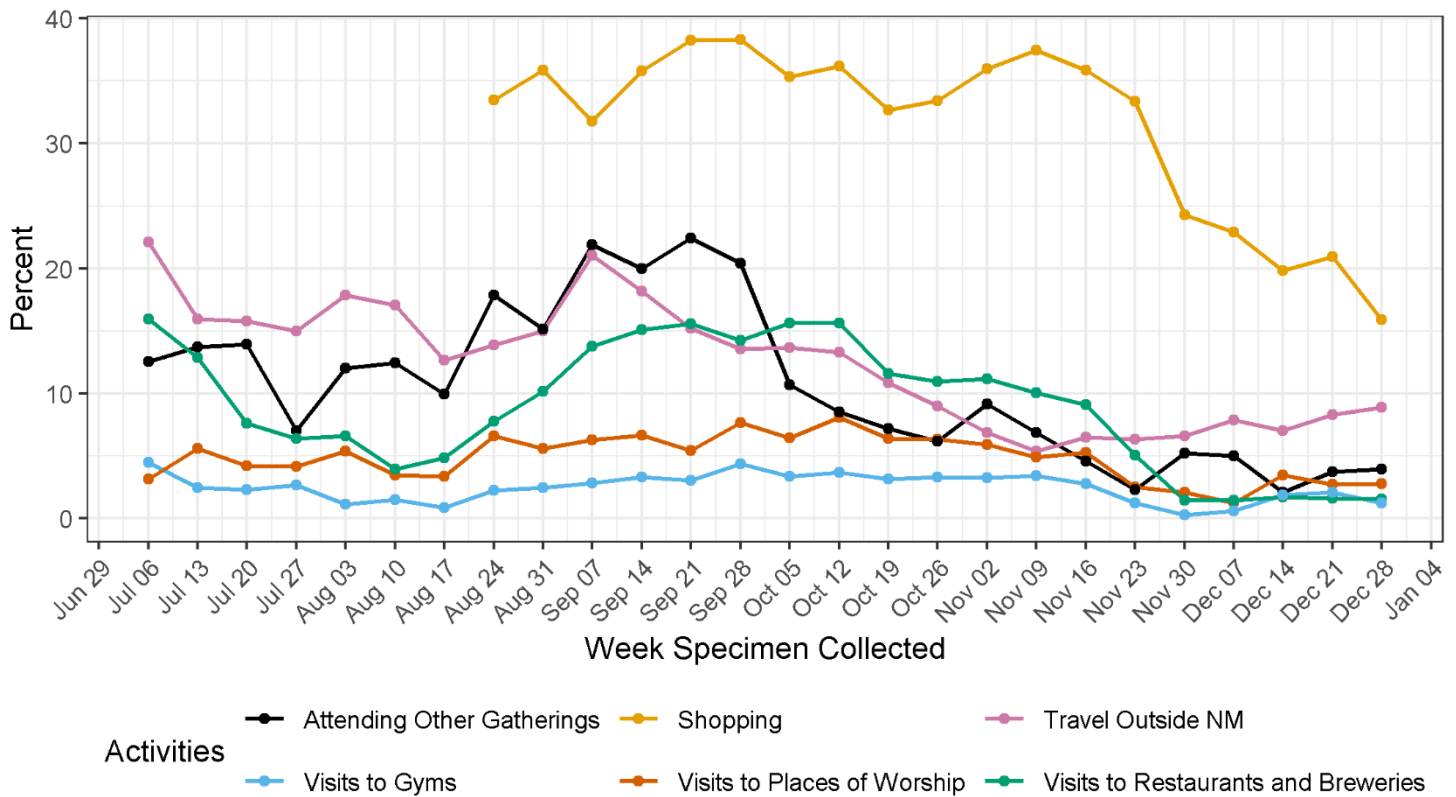
Percentage of specific symptoms reported by cases

Symptom	Percent of Symptomatic Respondents
Fever (Measured or Subjective)	46%
Chills	43%
Muscle Aches	55%
Runny Nose	47%
Sore Throat	40%
Cough	63%
Shortness of Breath	28%
Nausea or Vomiting	26%
Headache	65%
Abdominal Pain	15%
Diarrhea	30%
Fatigue	65%
Loss of Appetite	39%
Loss of Taste or Smell	54%

Data on “Loss of Taste or Smell” are from cases with positive tests on or after 8/3/2020, as this question was not asked consistently until August. Previously, measured fever (100.5 degrees Fahrenheit or higher) and subjective fever were reported as separate symptoms. From this week forward, cases reporting either of these symptoms will be recorded as experiencing “Fever (Measured or Subjective).”

SECTION 2: POSSIBLE EXPOSURES AND ACTIVITIES

Percentage of cases reporting activities prior to illness each week

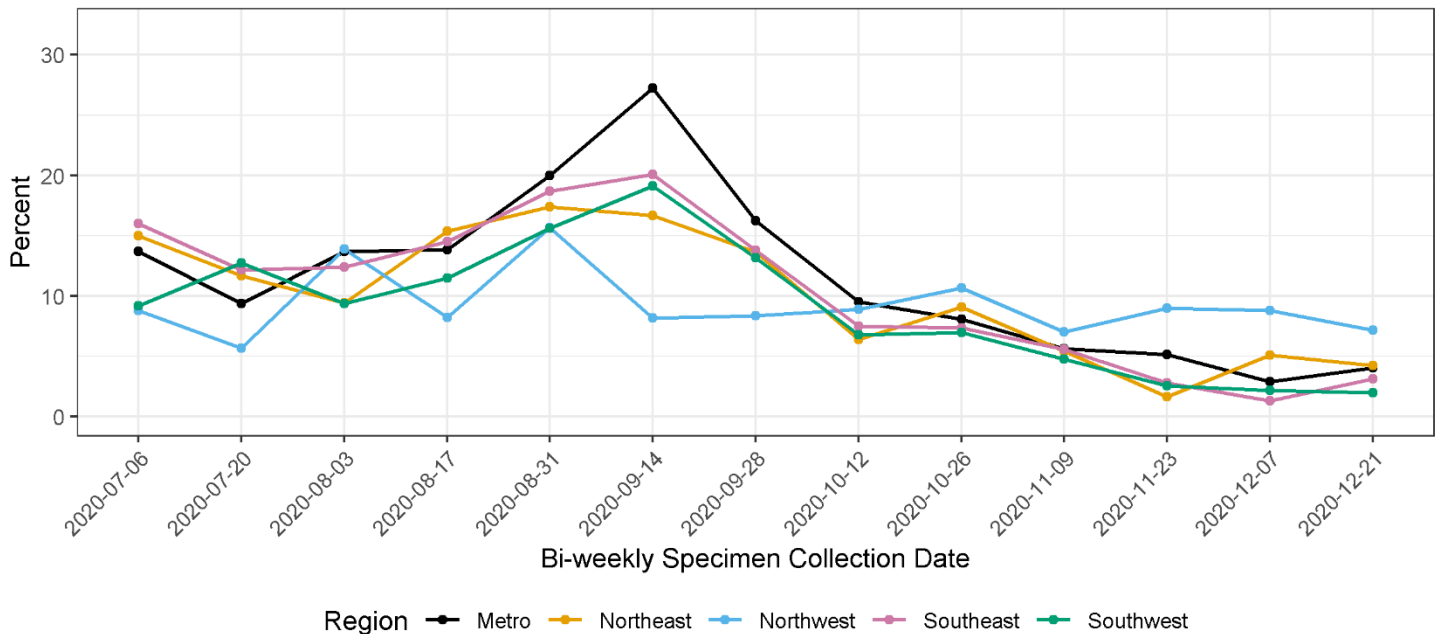


Cases in correctional facilities and residents of long-term care facilities were excluded. Percentages are out of cases who were contacted and asked about their exposures 14 days prior to illness onset. Previous published reports did not always include 14 days prior to illness onset. Data from the previous week is excluded, as positive tests during this time may not yet be reported or investigated.

Percentage of cases reporting activities prior to illness by region bi-weekly

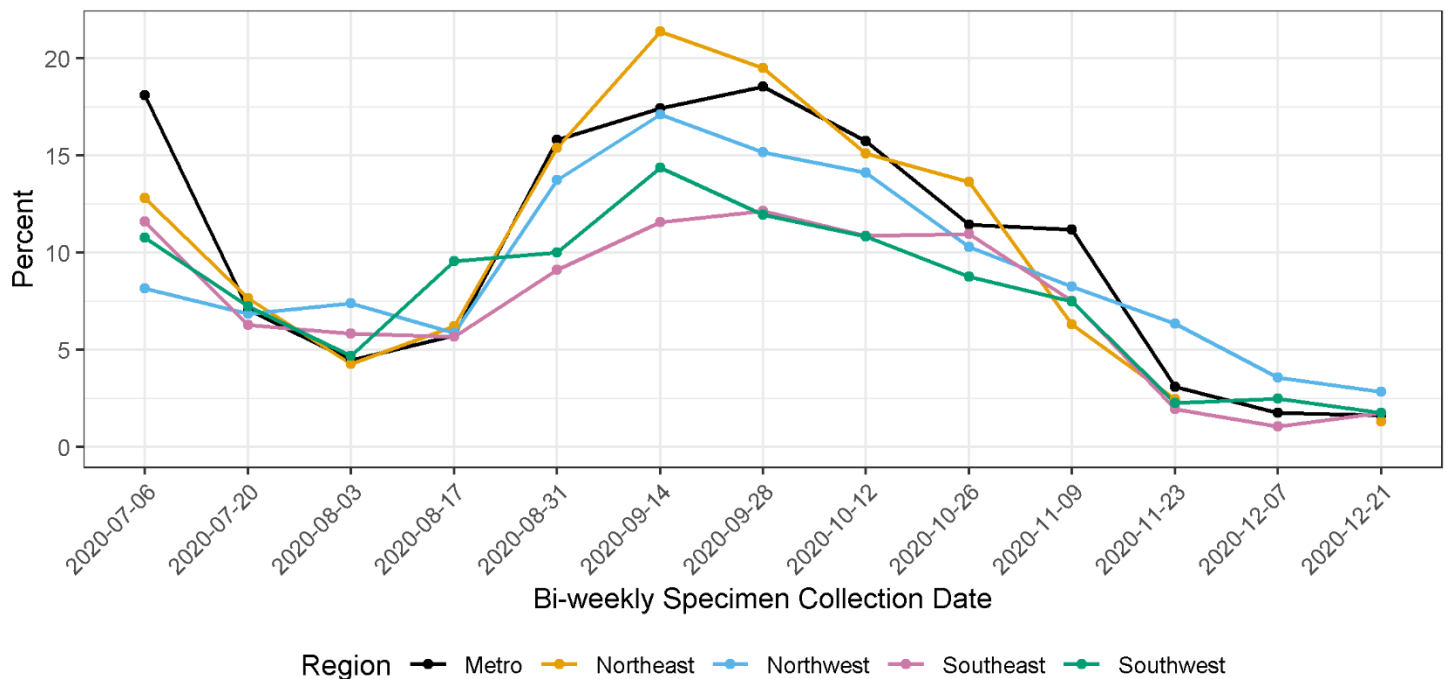
For specific activities reported by cases in each region, cases in correctional facilities and residents of long-term care facilities were excluded. Percentages are out of cases who were contacted and asked about their exposures 14 days prior to illness onset. Previous published reports did not always include 14 days prior to illness onset.

Gatherings



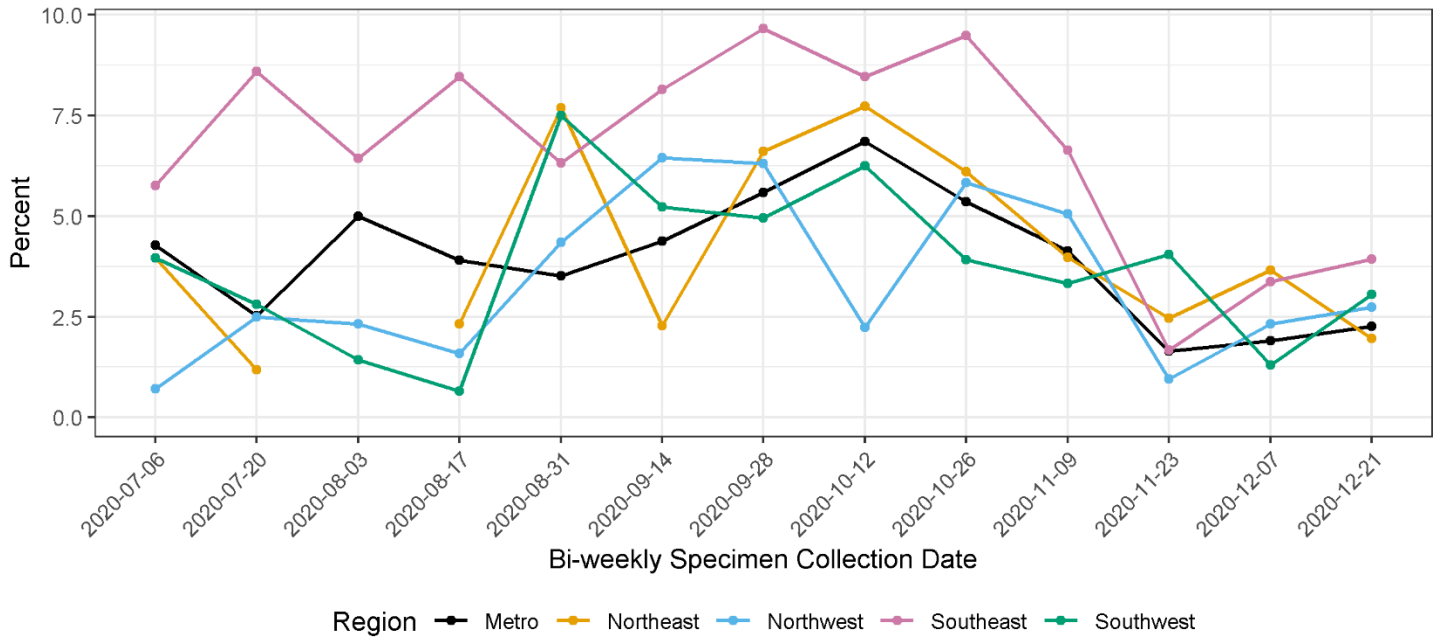
The percentage for each bi-weekly specimen collection date is based on the previous 14 days' data.
Data from the most recent two-week interval will change as investigations continue.

Restaurants or bars



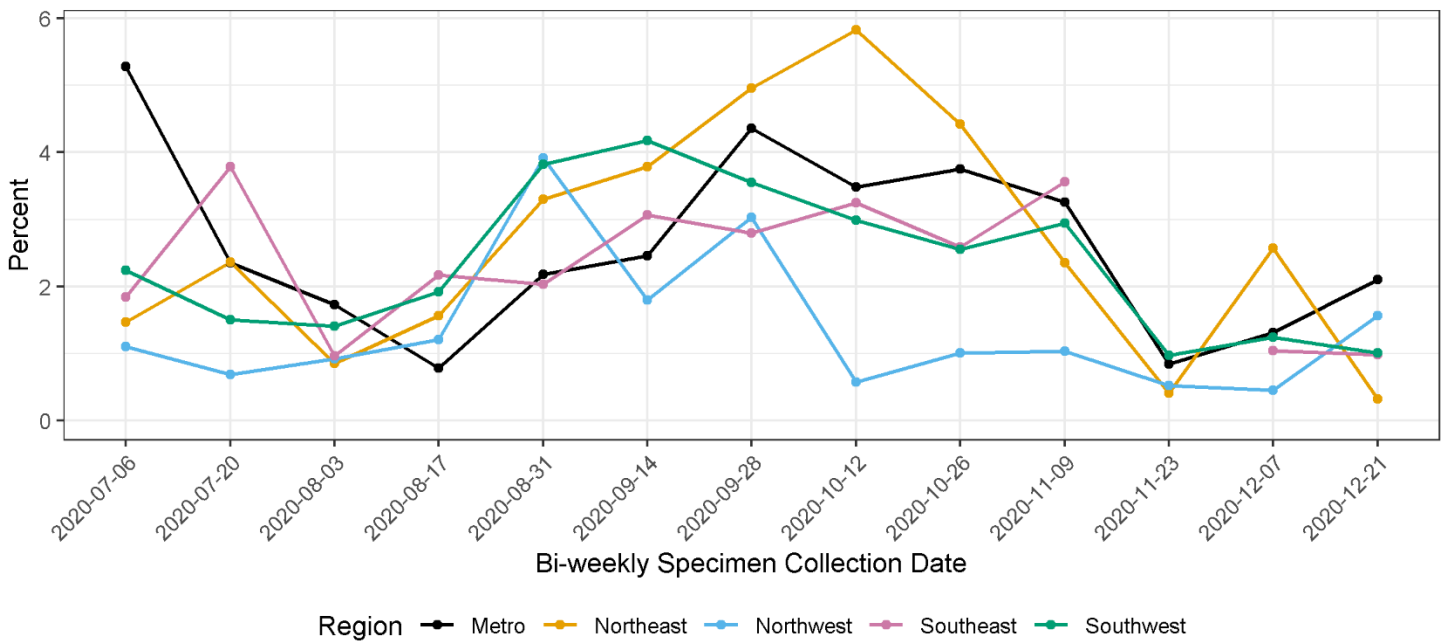
The percentage for each bi-weekly specimen collection date is based on the previous 14 days' data.
Data from the most recent two-week interval will change as investigations continue.

Places of worship



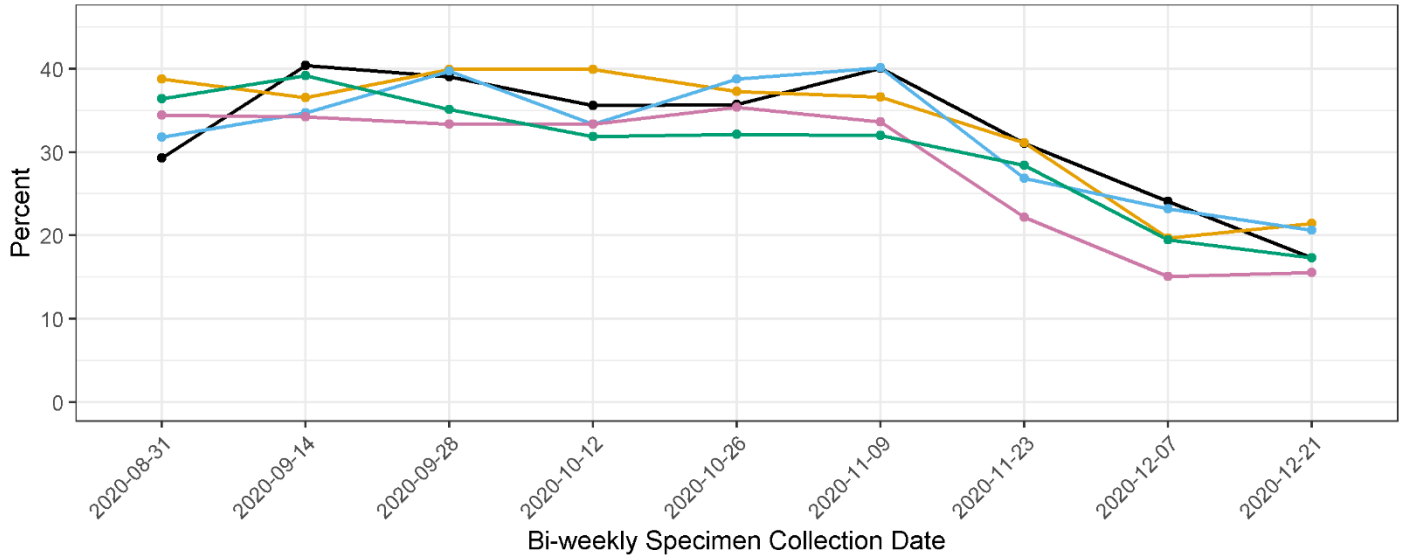
The percentage for each bi-weekly specimen collection date is based on the previous 14 days' data.
Data from the most recent two-week interval will change as investigations continue.

Gym



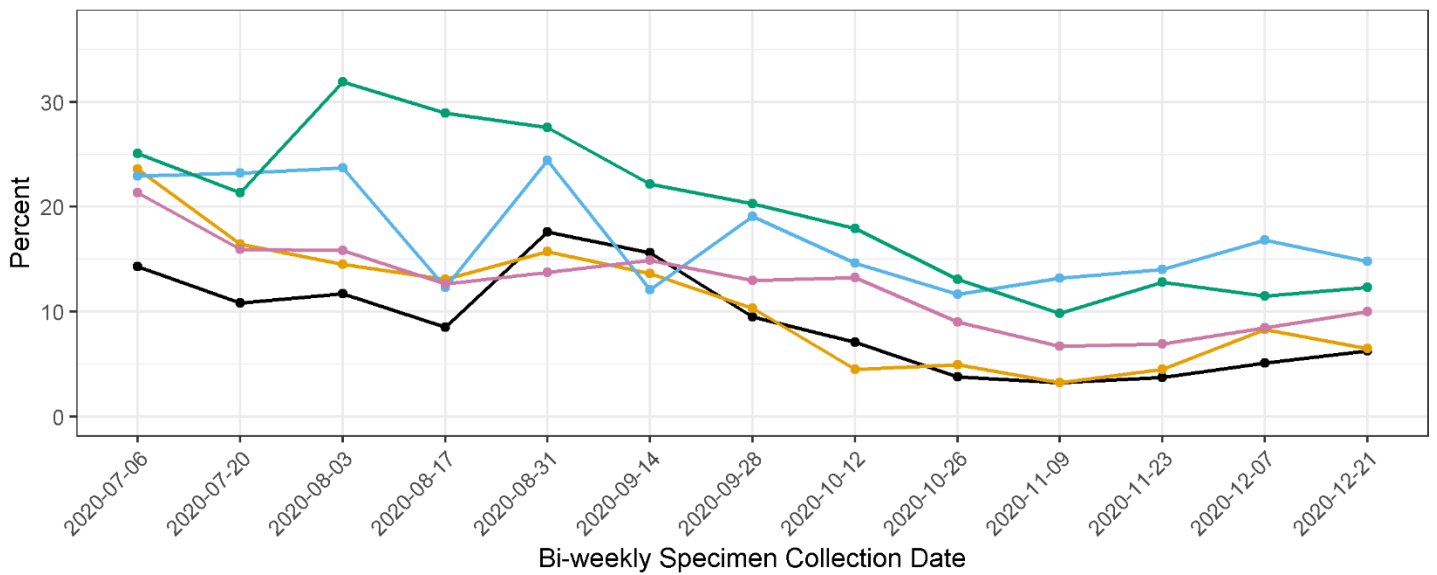
The percentage for each bi-weekly specimen collection date is based on the previous 14 days' data.
Data from the most recent two-week interval will change as investigations continue.

Shopping



The percentage for each bi-weekly specimen collection date is based on the previous 14 days' data.
Data from the most recent two-week interval will change as investigations continue.

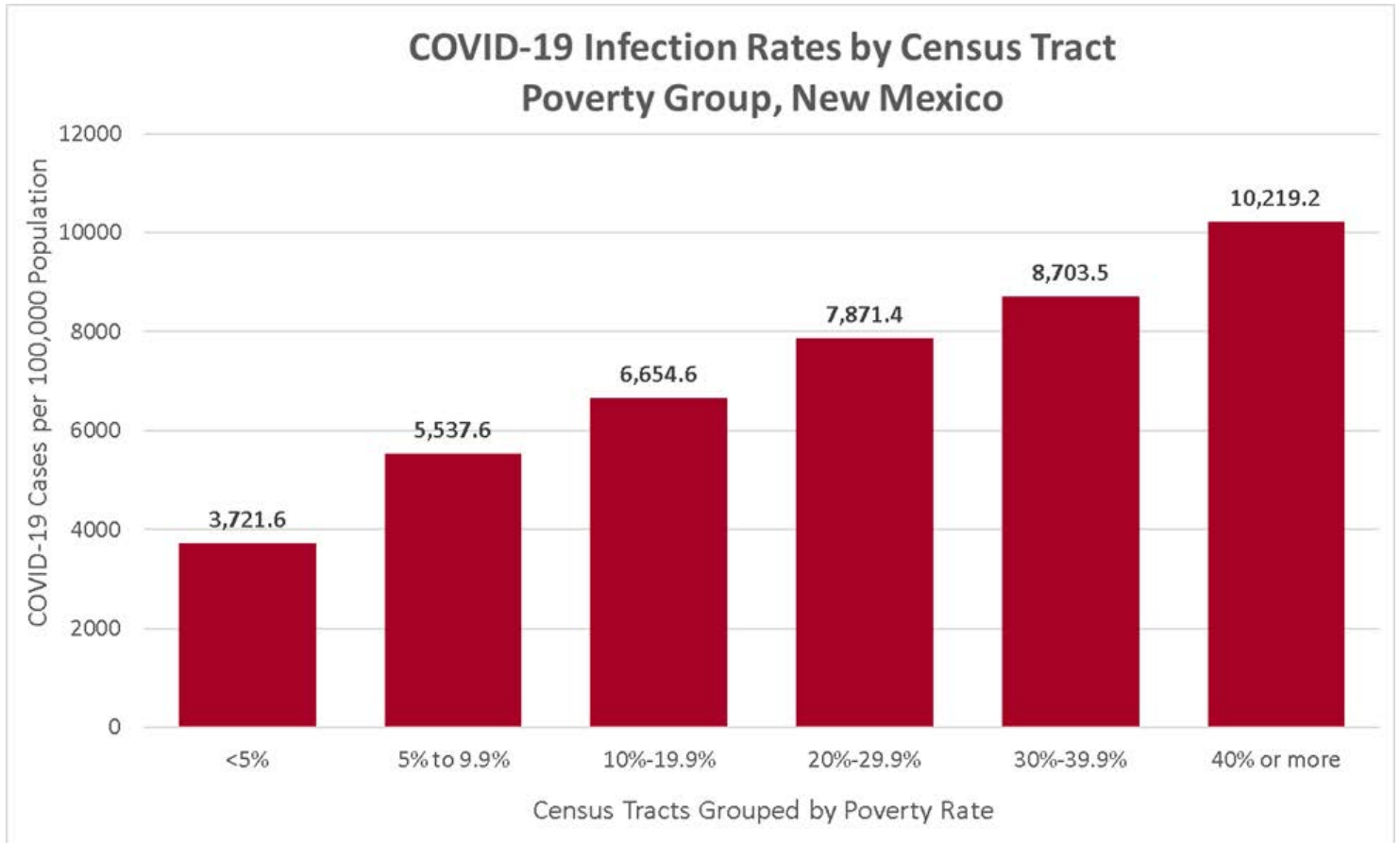
Out-of-state travel



The percentage for each bi-weekly specimen collection date is based on the previous 14 days' data.
Data from the most recent two-week interval will change as investigations continue.

SECTION 3: SOCIOECONOMIC STATUS

Case rate per 100,000 population by census tract below poverty level



Case rate per 100,000 population by poverty level each week

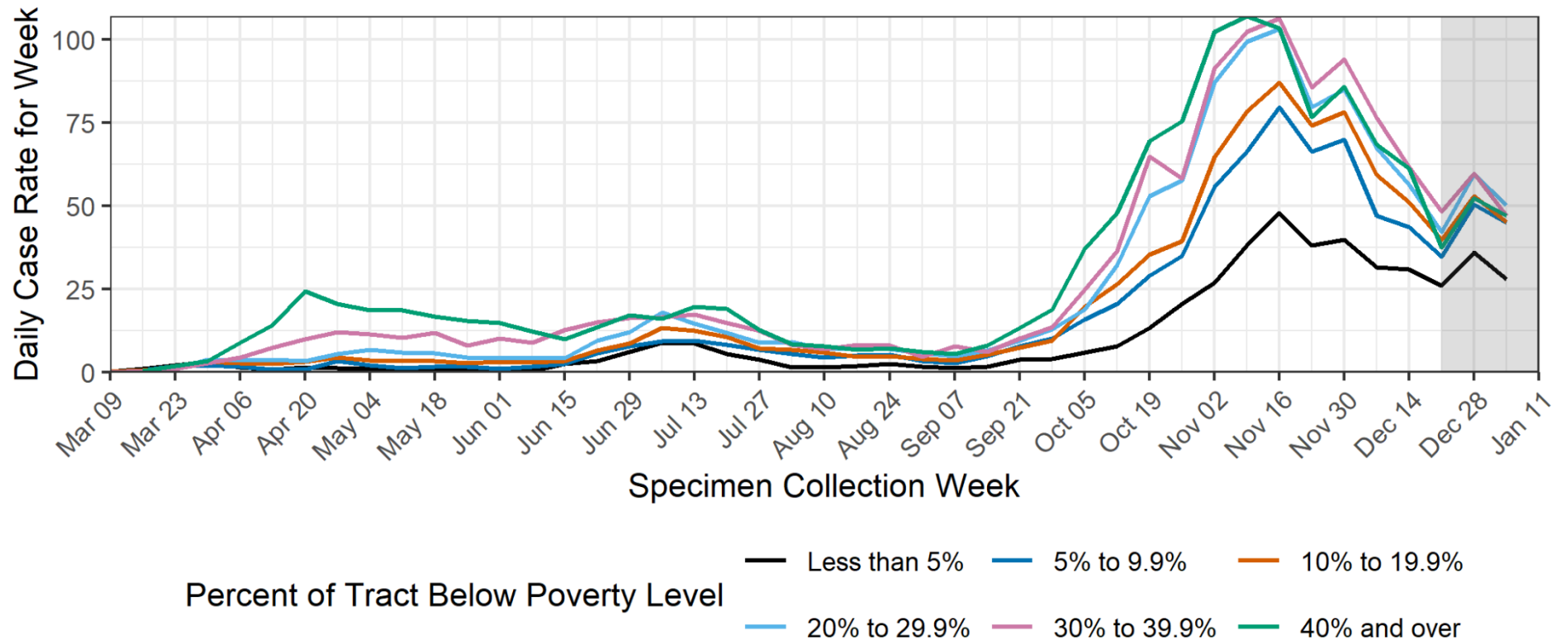
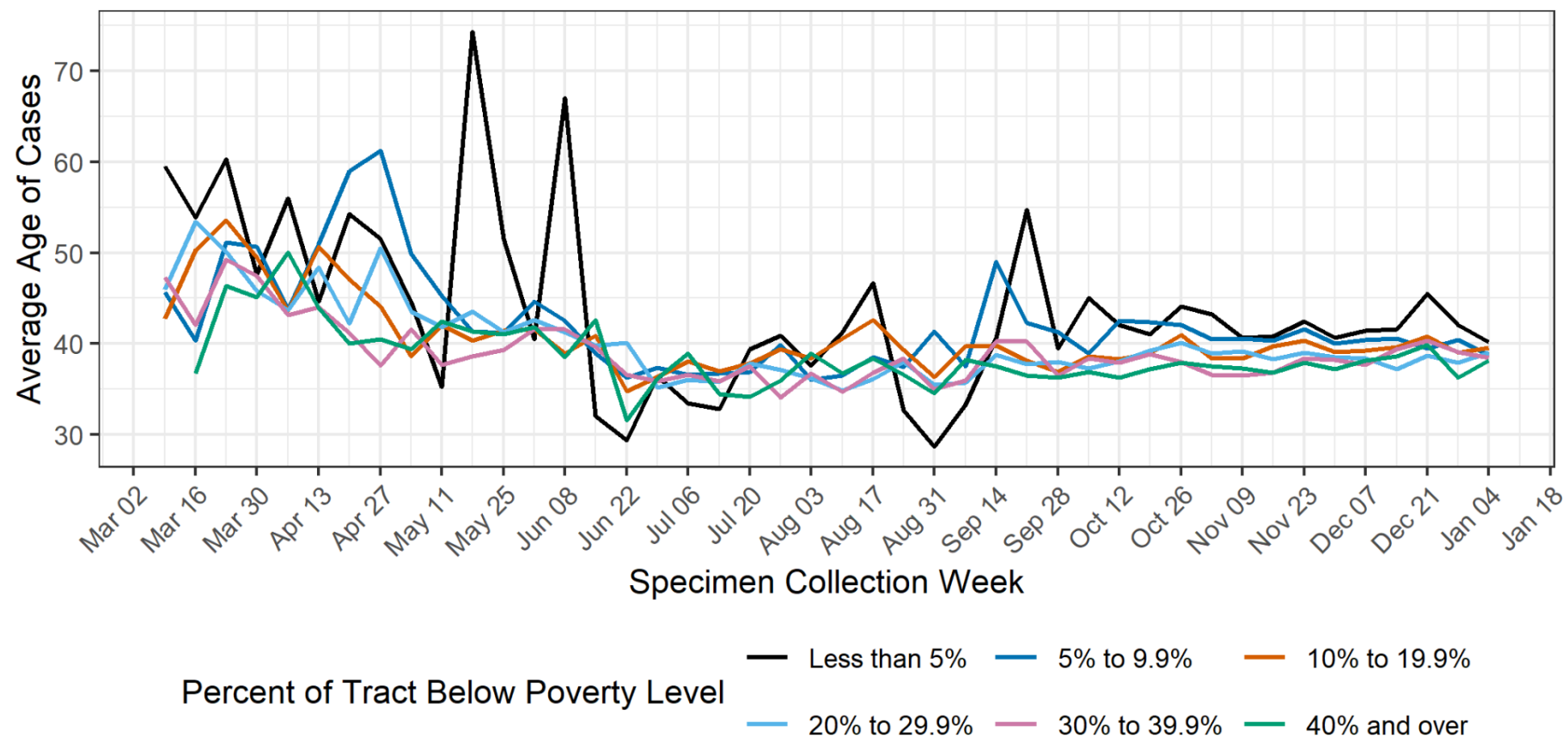
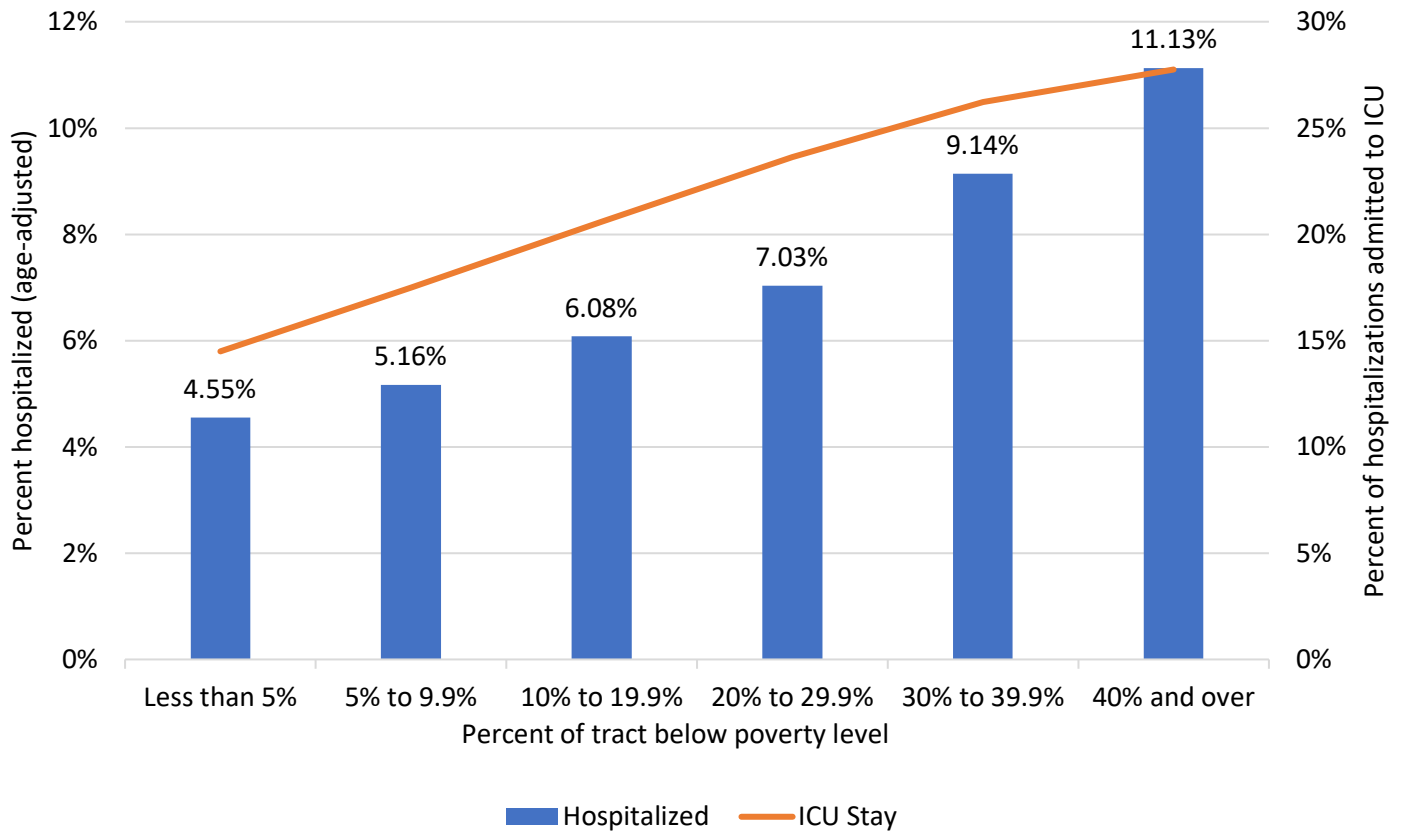


Figure excludes 6445 individuals with addresses that have not been geocoded, individuals who are detained in state or federal correctional facilities, and individuals in ICE custody. Positive tests collected during the greyed-out period may not yet be reported.

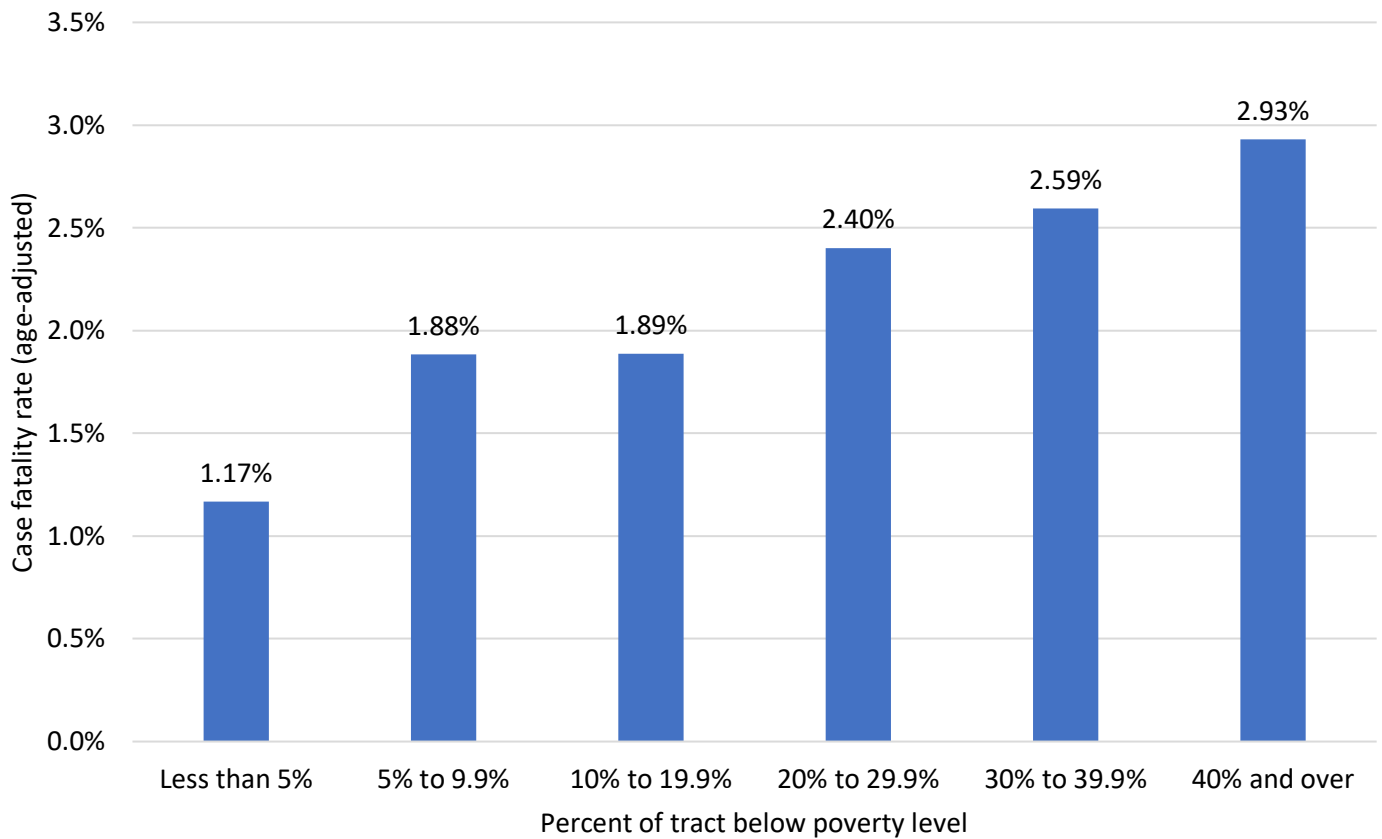
Average age of cases by poverty level each week



Hospitalizations and ICU stay by poverty level



Case fatality rate by poverty level



Data Sources

- **COVID-19 data**
 - **New Mexico Electronic Disease Surveillance System (NM-EDSS)**, Infectious Disease Epidemiology Bureau, Epidemiology and Response Division, New Mexico Department of Health.
 - **Salesforce/MTX COVID-19 Case Investigation Platform.**
- **Population Estimates:** University of New Mexico, Geospatial and Population Studies (GPS) Program.
- **Age-adjustment:** US 2000 Standard Population Weights
- **Poverty Rates, U.S. Census Bureau, American Community Survey (ACS)**, 2018 5-year estimates. Data from the 2017 5-year estimates were used in this analysis as proxy poverty data for those census tracts.
- **Case fatality rates.** Age-adjusted to the current distribution of U.S. COVID-19 cases: [CDC COVID Data Tracker](#)

Data Notes

- **The data reported in this weekly update may not match the daily numbers that are reported in the New Mexico Department of Health (NMDOH) press releases and/or the NMDOH COVID-19 data dashboard. This may be due to variation in the date and time of data extraction from NM-EDSS, corrections after quality assurance review, and differences in the exclusion criteria.**
- **New Mexico Electronic Disease Surveillance System (NM-EDSS).** Disease incidence data are derived from reports of notifiable infectious diseases. NMDOH relies on health care providers, laboratories, hospitals, clinics, institutions and individuals to report suspected and confirmed notifiable infectious diseases in accordance with New Mexico Administrative Code 7.4.3.13. Under-reporting can occur due to lack of awareness about reporting requirements or lack of compliance with those requirements. Not all cases of infectious diseases can be detected for various reasons including lack of access to health care services, lack of laboratory testing or concerns about confidentiality. Specific and standardized national case definitions are used to classify disease reports by case status.
- **New Mexico Population Estimates.** All population estimates apply to July 1 of 2018. Estimates include decimal fractions. The sum of population subgroup estimates may not exactly equal the overall state population estimate due to rounding error. Population estimates for previous years are occasionally revised as new information becomes available. When publishing trend data, always be sure that your rates for earlier years match current rates on NM-IBIS that have been calculated with the most up-to-date population estimates.
- **Case rate per 100,000 population.** A basic measure of disease-specific case frequency is a rate, which takes into account the number of cases and the population size. It is helpful in making public health decisions for a given population, relative to another population regardless of size.