

NEW MEXICO COVID-19 CASES UPDATE STATEWIDE AND COUNTY-LEVEL TRENDS

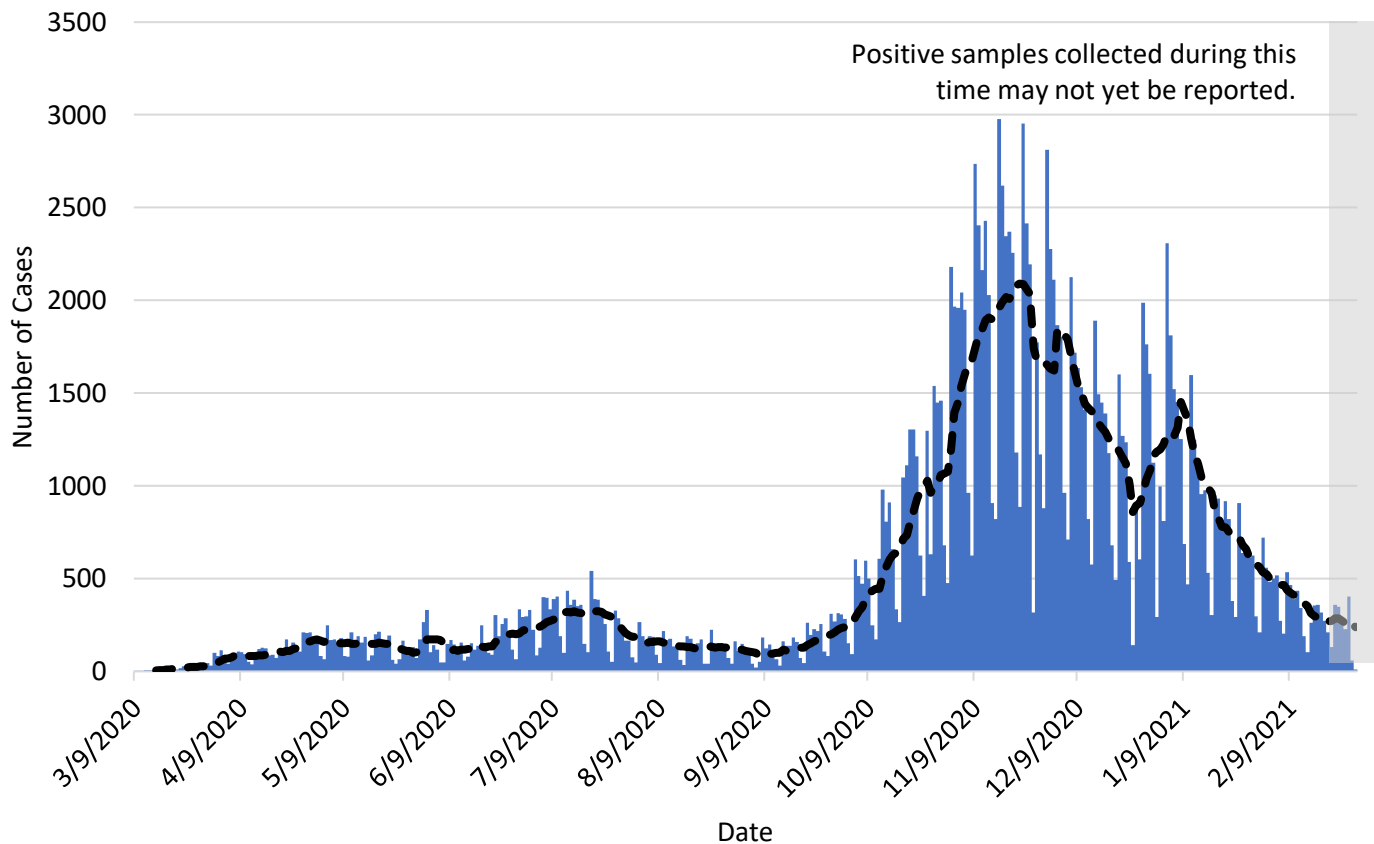
March 1st, 2021

Unless stated otherwise, all data reported here exclude cases who are from out-of-state and cases who are detainees in Federal Immigration and Customs Enforcement (ICE) facilities.

Total Cases	Cases in the Last 7 Days
185,297 ¹	2,336

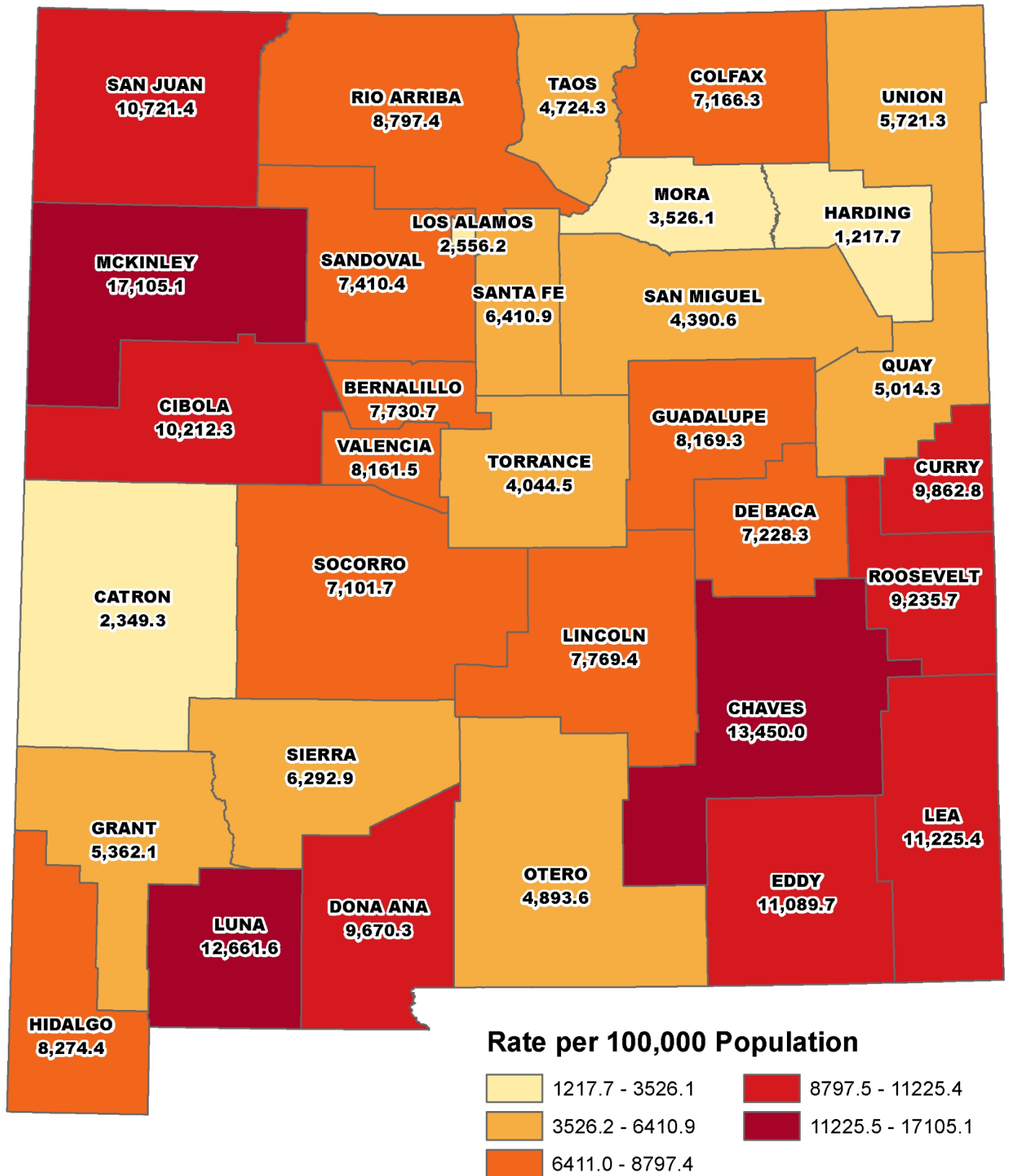
SECTION 1: STATEWIDE AND COUNTY-LEVEL CASES

New Mexico cases by date of specimen collection with 7 day moving average

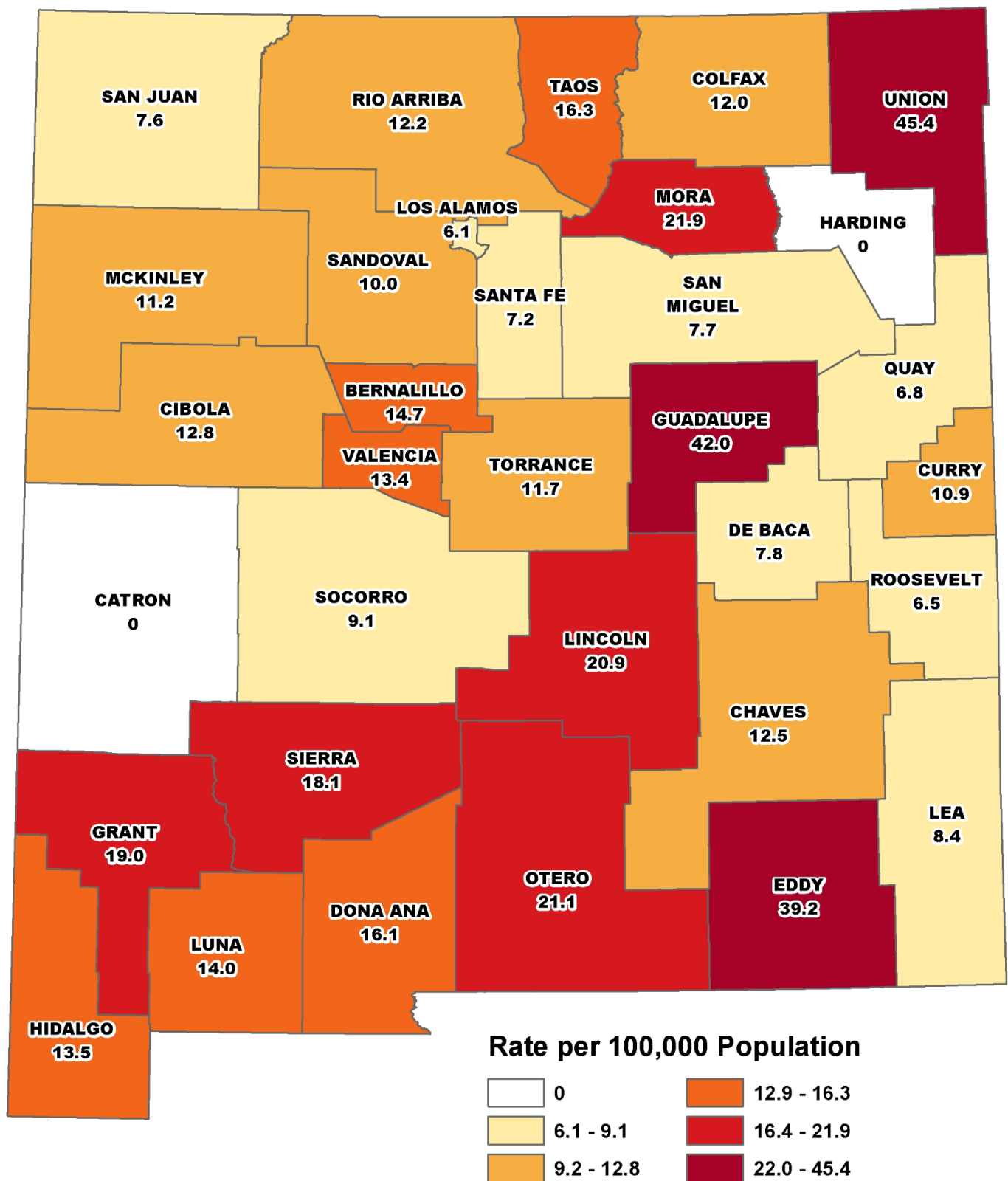


¹ Total cases, as reported on cv.nmhealth.org, include ICE detainees.

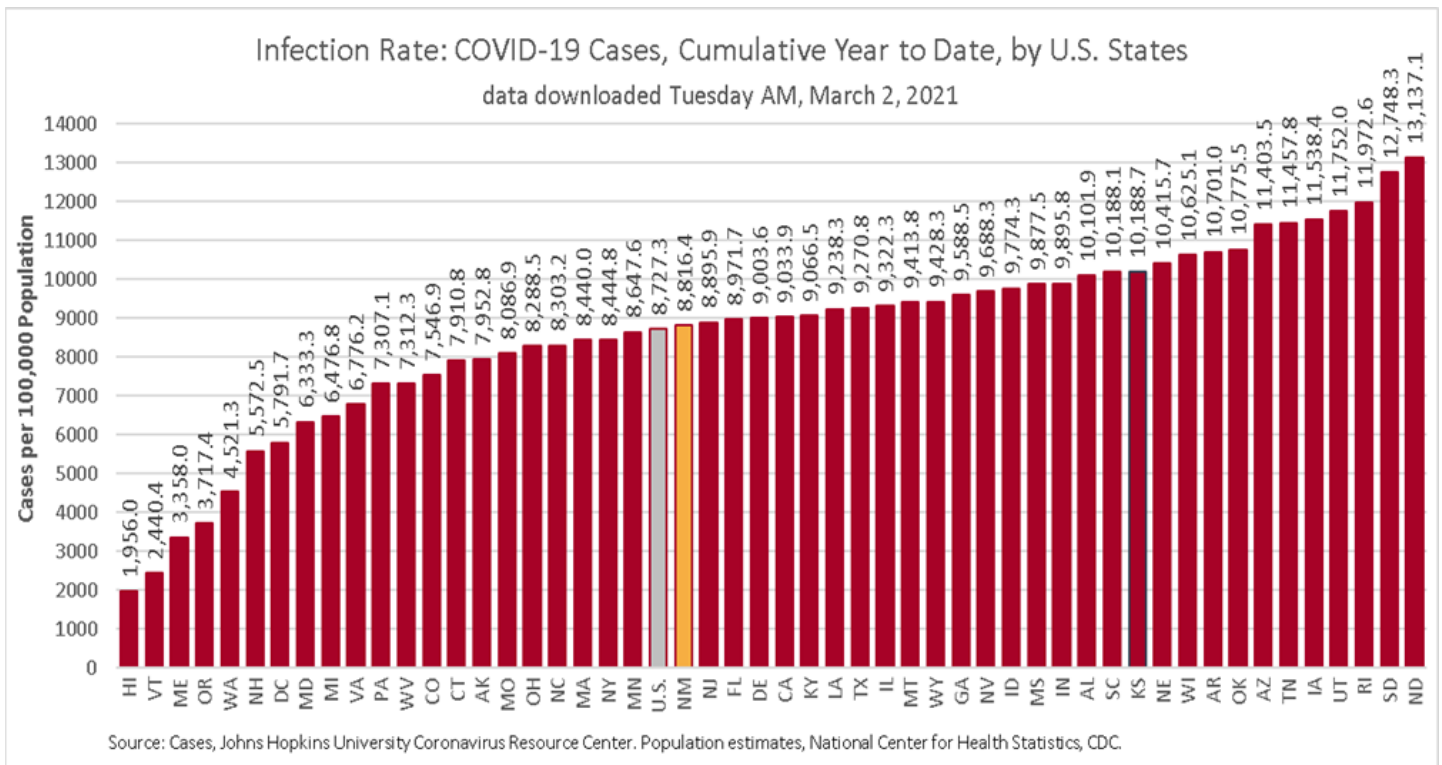
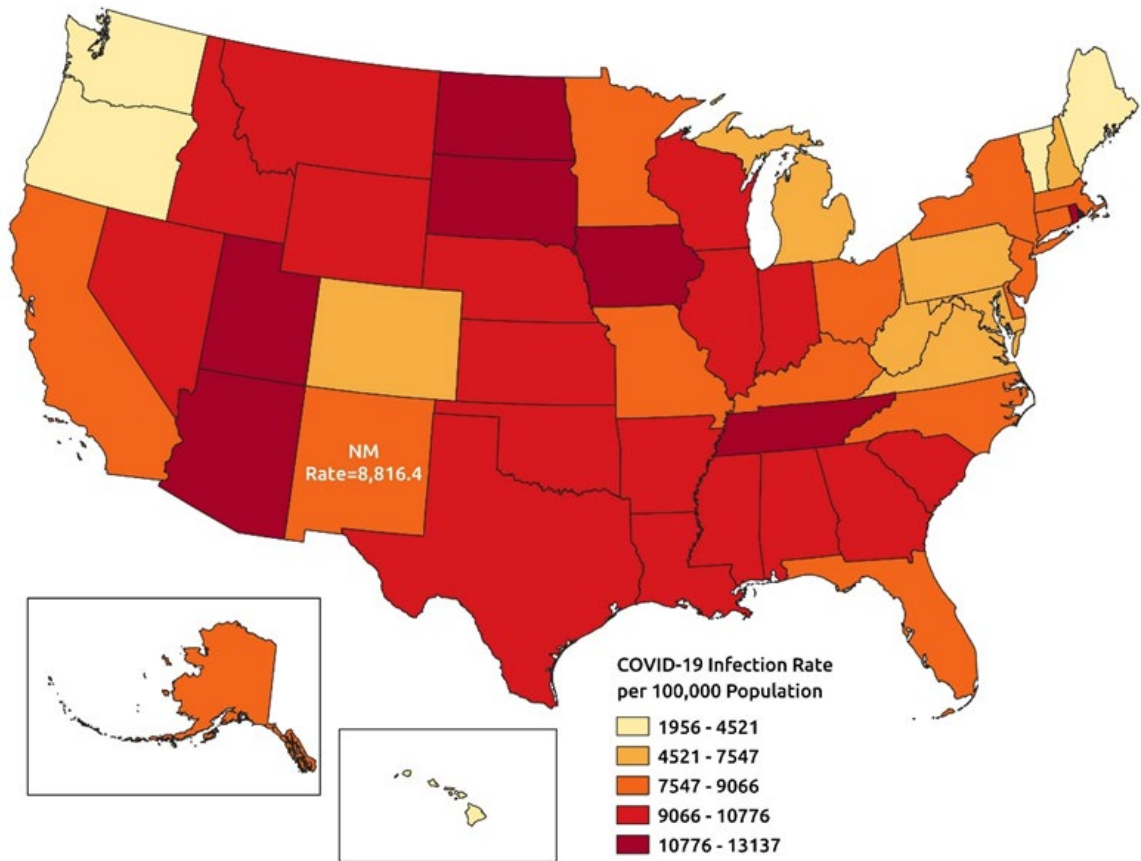
Cumulative case rate per 100,000 population by New Mexico County



Average daily case rate per 100,000 population in the previous 7 days by New Mexico County
(02/22 - 03/01)



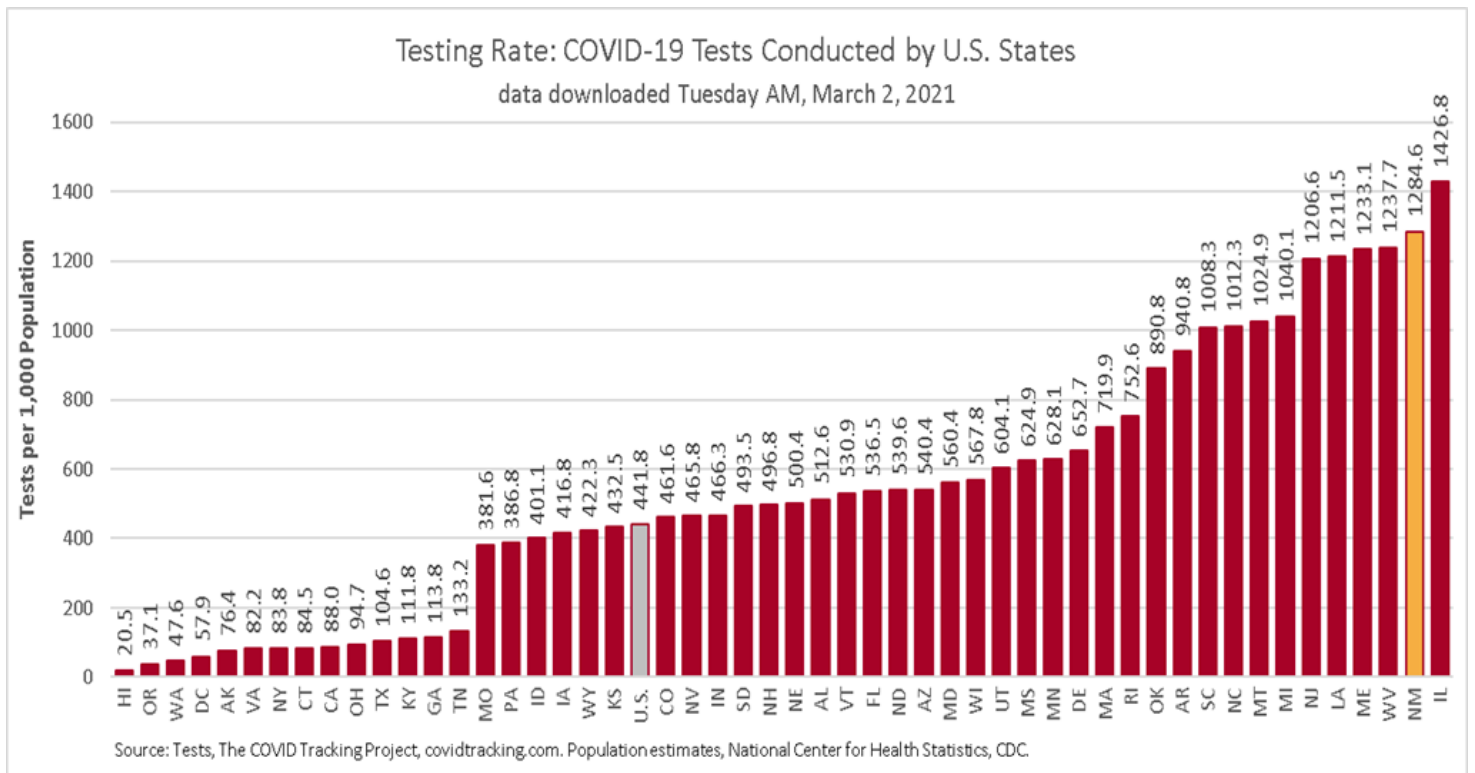
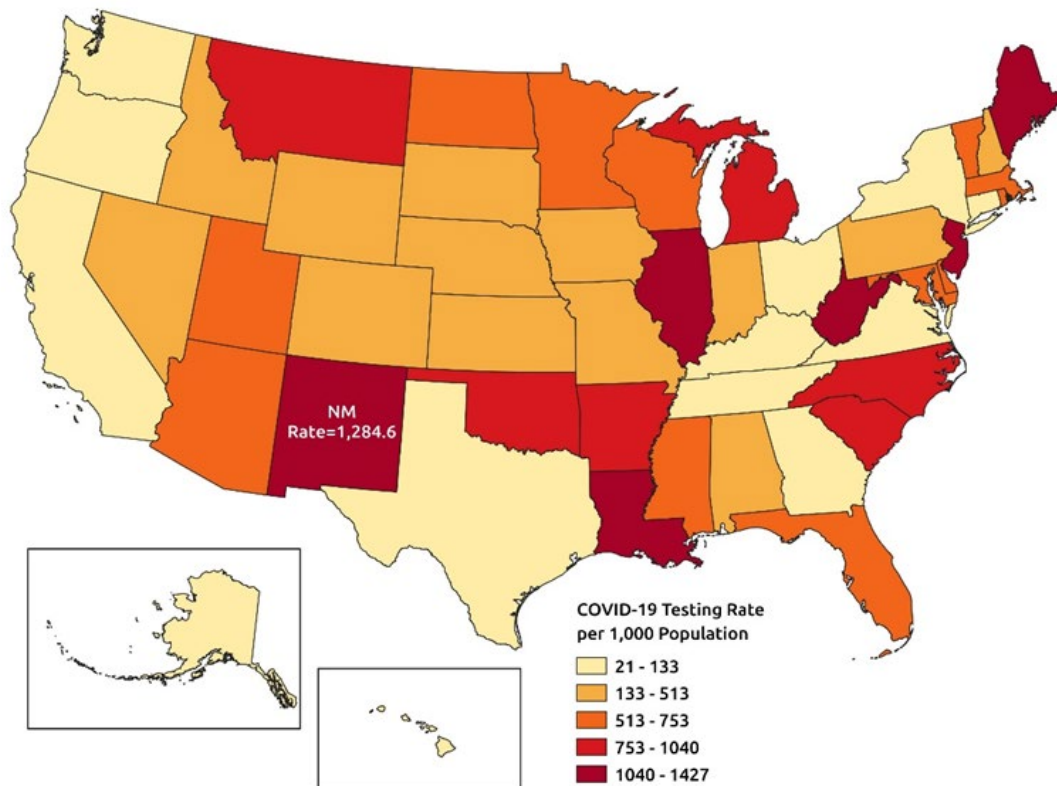
Cumulative infection rate per 100,000 population by U.S. States



Note: Data updated 03/01/2021 and downloaded from <https://api.covidtracking.com/v1/states/current.csv>. For U.S. interstate comparisons, the methodology used here is slightly different than methodologies used in other NMDOH COVID-19 reports.

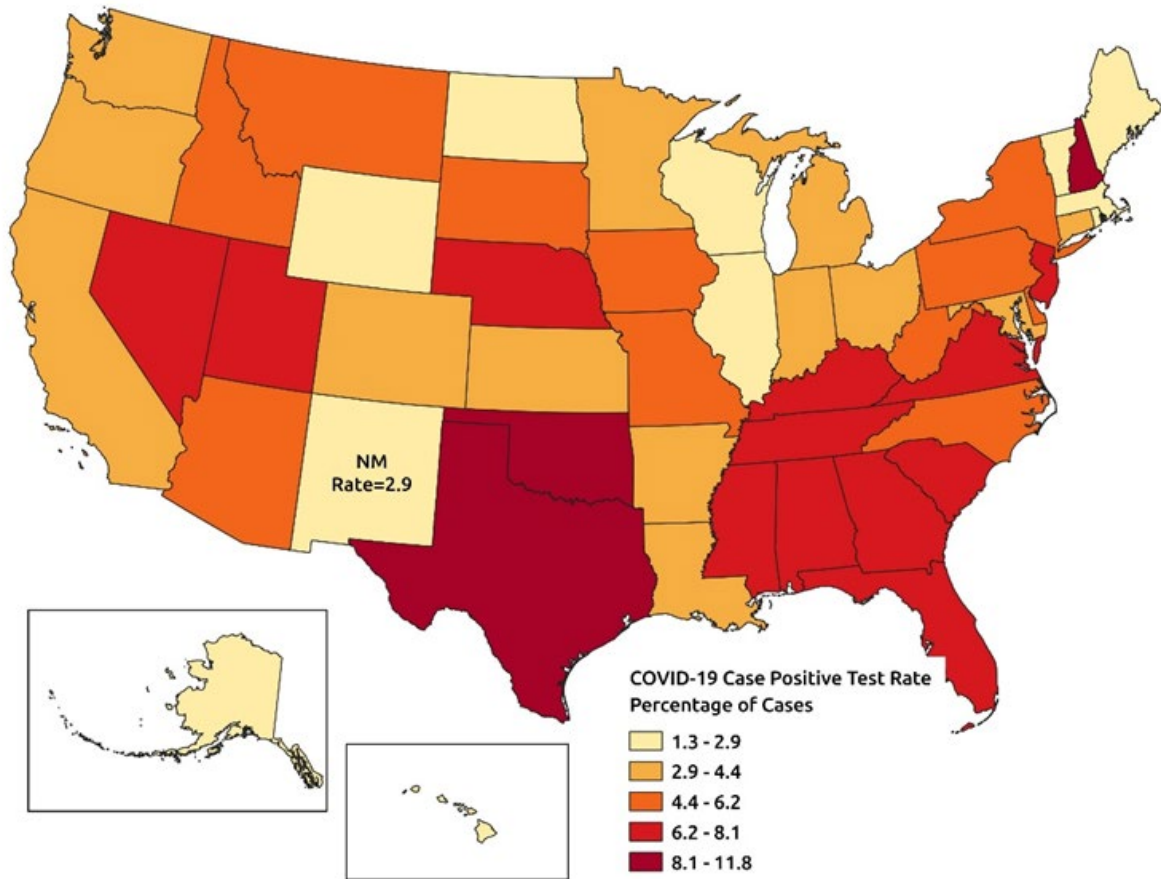
SECTION 2: TESTING

Testing rate by U.S. States



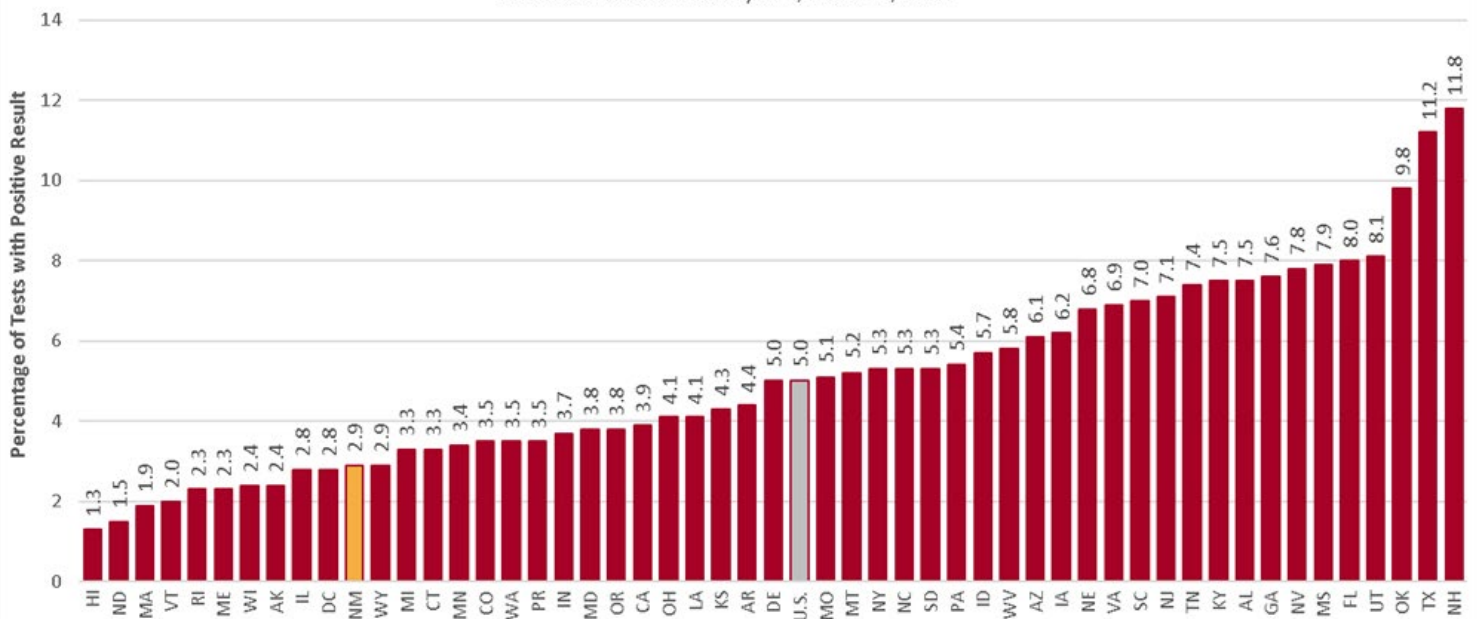
Note: Data updated 03/01/2021 and downloaded from <https://api.covidtracking.com/v1/states/current.csv>. For U.S. interstate comparisons, the methodology used here is slightly different than methodologies used in other NMDOH COVID-19 reports.

Test positivity by U.S. States



7-Day Test Positivity Rates (2/20/2021 - 2/26/2021): Positive COVID-19 Test Results by U.S. States

data downloaded Tuesday AM, March 2, 2021



Source: U.S. Health and Human Services, Community Profile Report

Note: Data updated 03/01/2021 and downloaded from <https://api.covidtracking.com/v1/states/current.csv>. For U.S. interstate comparisons, the methodology used here is slightly different than methodologies used in other NMDOH COVID-19 reports.

Data Sources

- **COVID-19 data**
 - **New Mexico Electronic Disease Surveillance System (NM-EDSS)**, Infectious Disease Epidemiology Bureau, Epidemiology and Response Division, New Mexico Department of Health.
 - **Salesforce/MTX COVID-19 Case Investigation Platform.**
- **Population Estimates:** University of New Mexico, Geospatial and Population Studies (GPS) Program.
- **Age-adjustment:** US 2000 Standard Population Weights
- **The COVID Tracking Project:** <https://covidtracking.com/>

Data Notes

- **The data reported in this weekly update may not match the daily numbers that are reported in the New Mexico Department of Health (NMDOH) press releases and/or the NMDOH COVID-19 data dashboard. This may be due to variation in the date and time of data extraction from NM-EDSS, corrections after quality assurance review, and differences in the exclusion criteria.**
- **New Mexico Electronic Disease Surveillance System (NM-EDSS).** Disease incidence data are derived from reports of notifiable infectious diseases. NMDOH relies on health care providers, laboratories, hospitals, clinics, institutions and individuals to report suspected and confirmed notifiable infectious diseases in accordance with New Mexico Administrative Code 7.4.3.13. Under-reporting can occur due to lack of awareness about reporting requirements or lack of compliance with those requirements. Not all cases of infectious diseases can be detected for various reasons including lack of access to health care services, lack of laboratory testing or concerns about confidentiality. Specific and standardized national case definitions are used to classify disease reports by case status.
- **New Mexico Population Estimates.** All population estimates apply to July 1 of 2019. Estimates include decimal fractions. The sum of population subgroup estimates may not exactly equal the overall state population estimate due to rounding error. Population estimates for previous years are occasionally revised as new information becomes available. When publishing trend data, always be sure that your rates for earlier years match current rates on NM-IBIS that have been calculated with the most up-to-date population estimates.