

COVID-19 Variant of Concern (VOC) Case Report

May 7, 2021

Cases reported here include cases with specimens sequenced at the Scientific Laboratory Division (SLD), University of New Mexico, Centers for Disease Control and Prevention (CDC), Aegis, LabCorp, and Fulgent Genetics. Variants of concern (VOC) are defined by Centers for Disease Control and Prevention: <https://www.cdc.gov/coronavirus/2019-ncov/cases-updates/variant-surveillance/variant-info.html>.

Cumulative number of Specimens Sequenced and Matched to Case Investigations

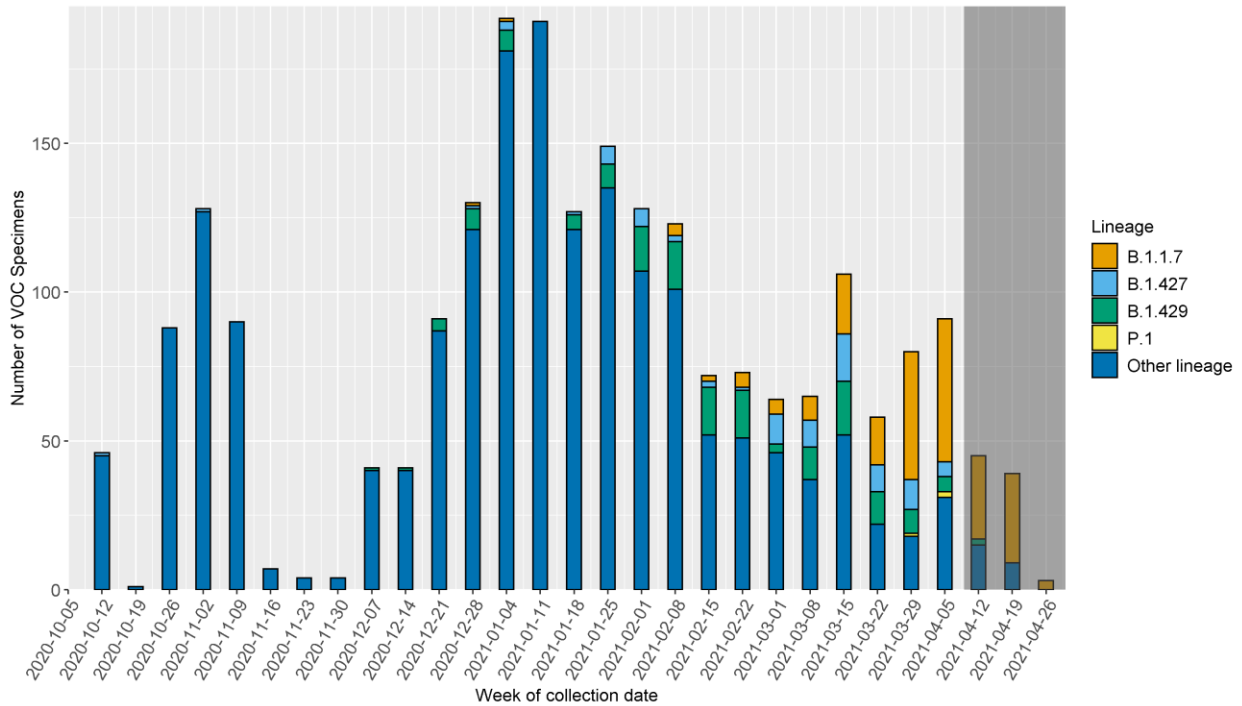
Lineage	Sequenced Cases	Matched Cases*	Percent Matched
B.1.1.7	385	214	56.0%
B.1.427	97	87	90.0%
B.1.429	181	163	90.0%
P.1	5	3	60.0%
Non-VOC Lineages	2839	2317	82.0%
Total	3508	2784	79.0%

*Cases are matched to NMDOH case investigation data to provide demographic, disease outcome, and other clinical information.

Cumulative number of VOC cases, hospitalizations and deaths

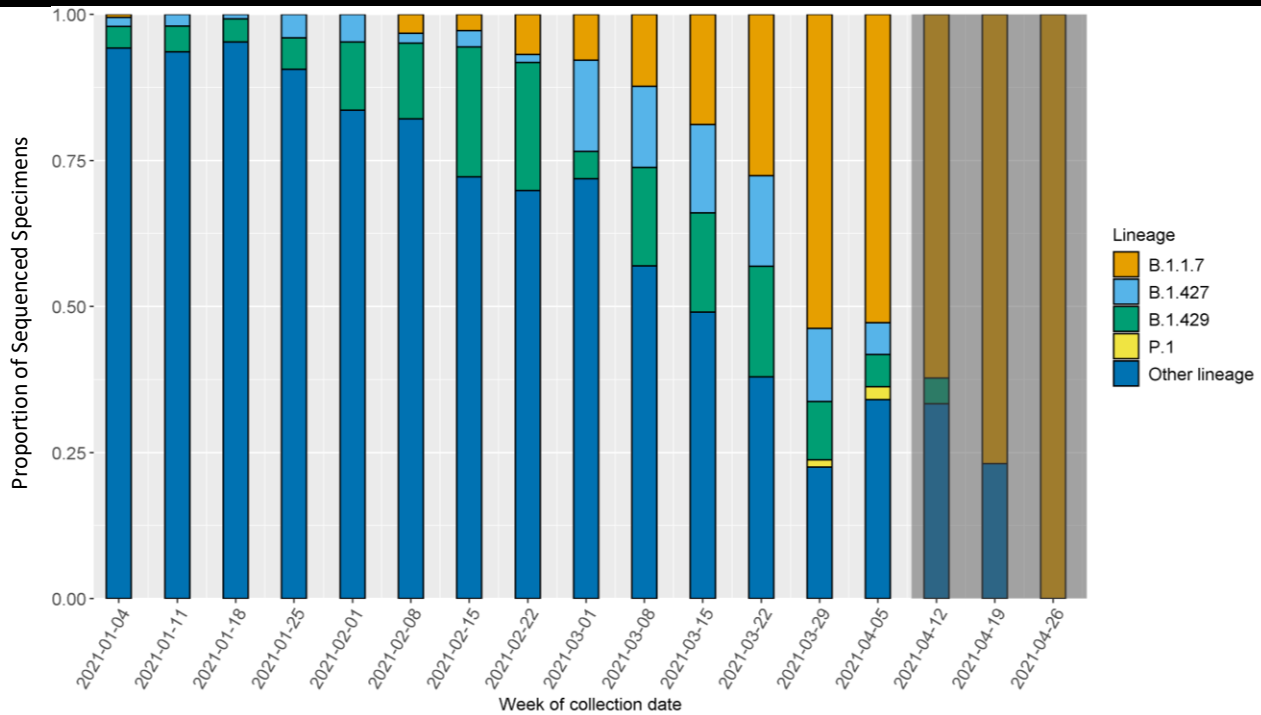
Lineage	Total Cases	Number Hospitalized	Percent Hospitalized	Number Died	Percent Died
B.1.1.7	214	10	5.0%	0	0.0%
B.1.427	87	3	3.0%	0	0.0%
B.1.429	163	2	1.0%	1	1.0%
P.1	3	1	33.0%	0	0.0%
Non-VOC Lineages	2317	94	4.0%	32	1.0%

Identified SARS-CoV-2 lineages by week



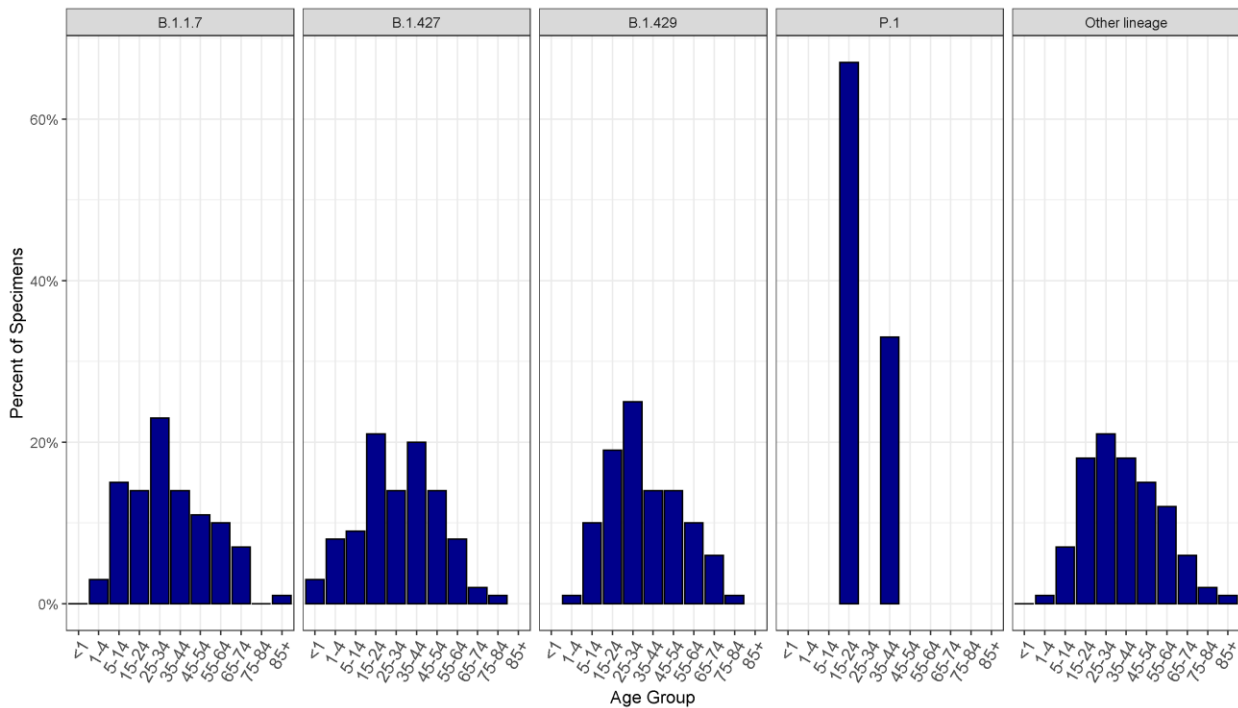
*The dark grey shaded region represents the lag period between specimen collection and genomic sequencing results.

Proportion of identified SARS-CoV-2 lineages by week

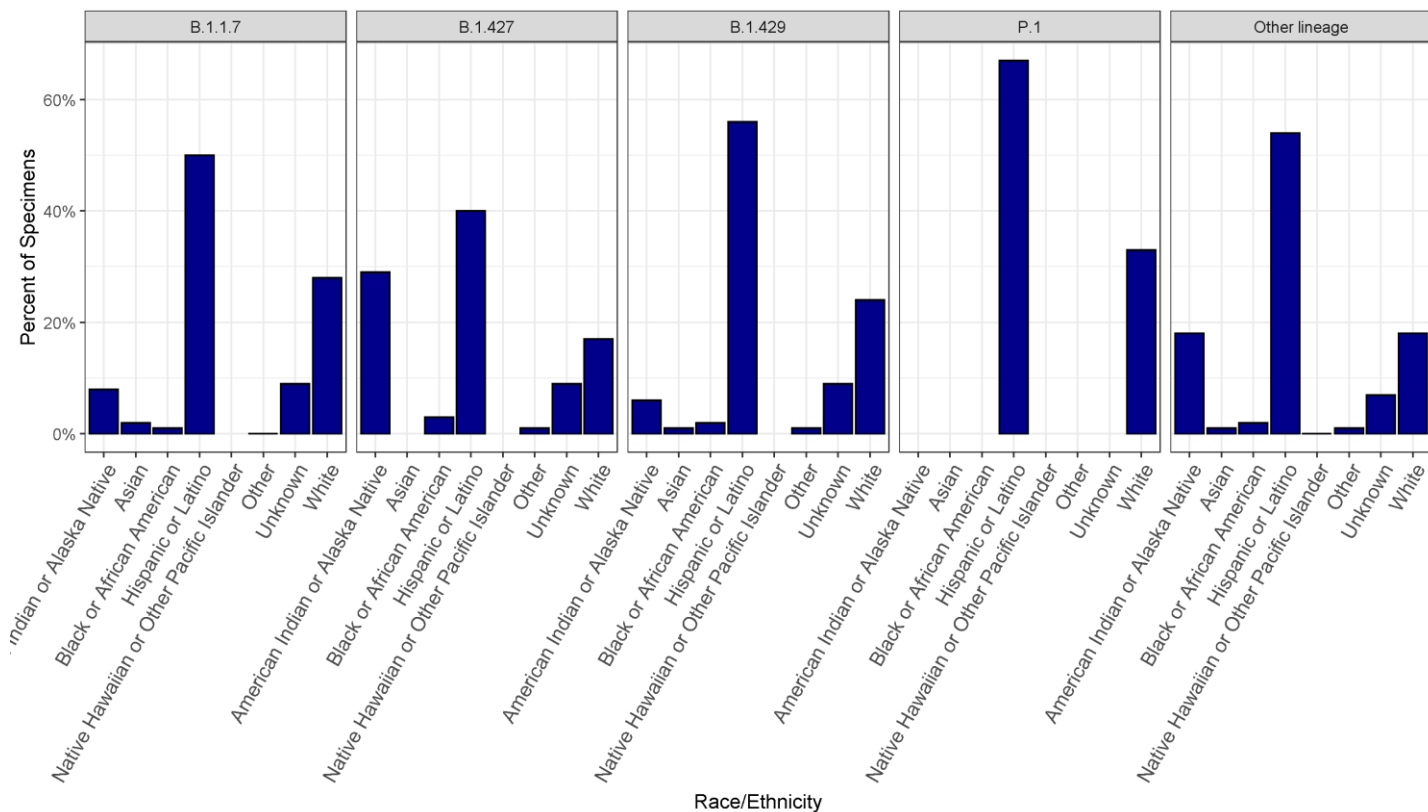


*The dark grey shaded region represents the lag period between specimen collection and genomic sequencing results.

Cumulative proportion of VOC cases by age group



Cumulative proportion of VOC cases by race/ethnicity



Cumulative number of VOC cases by county of residence

Counties with less than 5 matched sequenced cases are not included in the table below

County	B.1.1.7	B.1.427	B.1.429	P.1	Non-VOC lineages
Bernalillo	74	30	67	1	632
Chaves	4	0	0	0	51
Cibola	1	23	4	0	81
Colfax	1	0	1	0	22
Curry	0	1	0	0	12
Doña Ana	22	3	23	0	236
Eddy	10	2	1	0	77
Grant	1	0	7	0	21
Guadalupe	0	0	4	0	10
Lea	3	0	0	0	98
Lincoln	0	0	0	0	18
Los Alamos	6	3	1	0	15
Luna	4	0	0	0	13
McKinley	2	0	2	0	88
Otero	6	0	12	0	160
Rio Arriba	16	1	0	0	30
Roosevelt	0	0	0	0	9
San Juan	28	5	6	2	216
San Miguel	1	1	1	0	44
Sandoval	6	5	7	0	130
Santa Fe	9	5	13	0	227
Socorro	2	2	0	0	20
Taos	6	1	5	0	26
Torrance	0	4	1	0	14
Valencia	12	1	8	0	63

Percentage of VOC cases reporting any symptoms

Lineage	No Symptoms	Unknown Symptoms	Yes Symptoms	Total Cases	Percent Symptomatic
B.1.1.7	20	41	153	214	76%
B.1.427	8	30	49	87	56%
B.1.429	13	20	130	163	80%
P.1	0	0	3	3	100%
Non-VOC lineages	234	601	1482	2317	64%

Percentage of specific symptoms reported by symptomatic VOC cases

The table below includes data ONLY from symptomatic cases

Symptom	B.1.1.7 (n)	B.1.427 (n)	B.1.429 (n)	P.1 (n)	Non-VOC (n)
Fever (Measured or Subjective)	48% (72)	51% (25)	45% (59)	67% (2)	44% (651)
Chills	49% (74)	57% (28)	46% (60)	67% (2)	44% (648)
Muscle Aches	62% (94)	61% (30)	65% (85)	67% (2)	56% (821)
Runny Nose	62% (93)	67% (33)	58% (76)	67% (2)	53% (783)
Sore Throat	54% (81)	49% (24)	42% (55)	33% (1)	43% (627)
Cough	72% (108)	73% (36)	65% (85)	100% (3)	64% (938)
Shortness of Breath	26% (40)	33% (16)	15% (20)	33% (1)	25% (363)
Nausea/Vomiting	25% (37)	29% (14)	23% (30)	33% (1)	22% (325)
Headache	70% (106)	59% (29)	71% (92)	67% (2)	65% (959)
Abdominal Pain	20% (30)	14% (7)	11% (14)	33% (1)	14% (202)
Diarrhea	34% (51)	27% (13)	30% (39)	0% (0)	26% (375)
Fatigue	74% (112)	76% (37)	66% (86)	100% (3)	65% (952)
Loss of Appetite	40% (61)	37% (18)	37% (48)	33% (1)	36% (528)
Loss of Taste or Smell	36% (54)	45% (22)	55% (72)	33% (1)	47% (684)

Percentage of VOC cases reporting underlying conditions

Lineage	No	Unknown	Yes	Total Cases	Percent with underlying conditions
B.1.1.7	91	49	74	214	34.6%
B.1.427	30	39	18	87	20.7%
B.1.429	71	44	48	163	29.4%
P.1	2	0	1	3	33.3%
Non-VOC	714	1034	569	2317	24.60%

Percentage of specific underlying conditions reported by VOC cases

Data below includes ONLY cases who report having a pre-existing condition.

Condition	B.1.1.7 (n)	B.1.427 (n)	B.1.429 (n)	Non-VOC (n)
Chronic Lung Disease	21% (15)	35% (6)	15% (7)	26% (142)
Chronic Liver Disease	4% (3)	0% (0)	0% (0)	4% (24)
Chronic Renal Disease	1% (1)	6% (1)	2% (1)	3% (18)
Diabetes Mellitus	18% (13)	6% (1)	15% (7)	22% (116)
Cardiovascular Disease	32% (23)	18% (3)	20% (9)	25% (136)
Autoimmune Disease	3% (2)	18% (3)	4% (2)	5% (27)
Neurological Disability	4% (3)	24% (4)	2% (1)	9% (51)
Current or Former Smoker	53% (38)	29% (5)	72% (33)	50% (271)

* Note: One P.1 variant case reported an underlying condition that is not included on the list above.