

# COVID-19 Variant of Concern (VOC) Case Report

May 24, 2021

Cases reported here include cases with specimens sequenced at the Scientific Laboratory Division (SLD), University of New Mexico, Centers for Disease Control and Prevention (CDC), Aegis, LabCorp, and Fulgent Genetics. Variants of concern (VOC) are defined by Centers for Disease Control and Prevention: <https://www.cdc.gov/coronavirus/2019-ncov/cases-updates/variant-surveillance/variant-info.html>.

## Cumulative number of Specimens Sequenced and Matched to Case Investigations

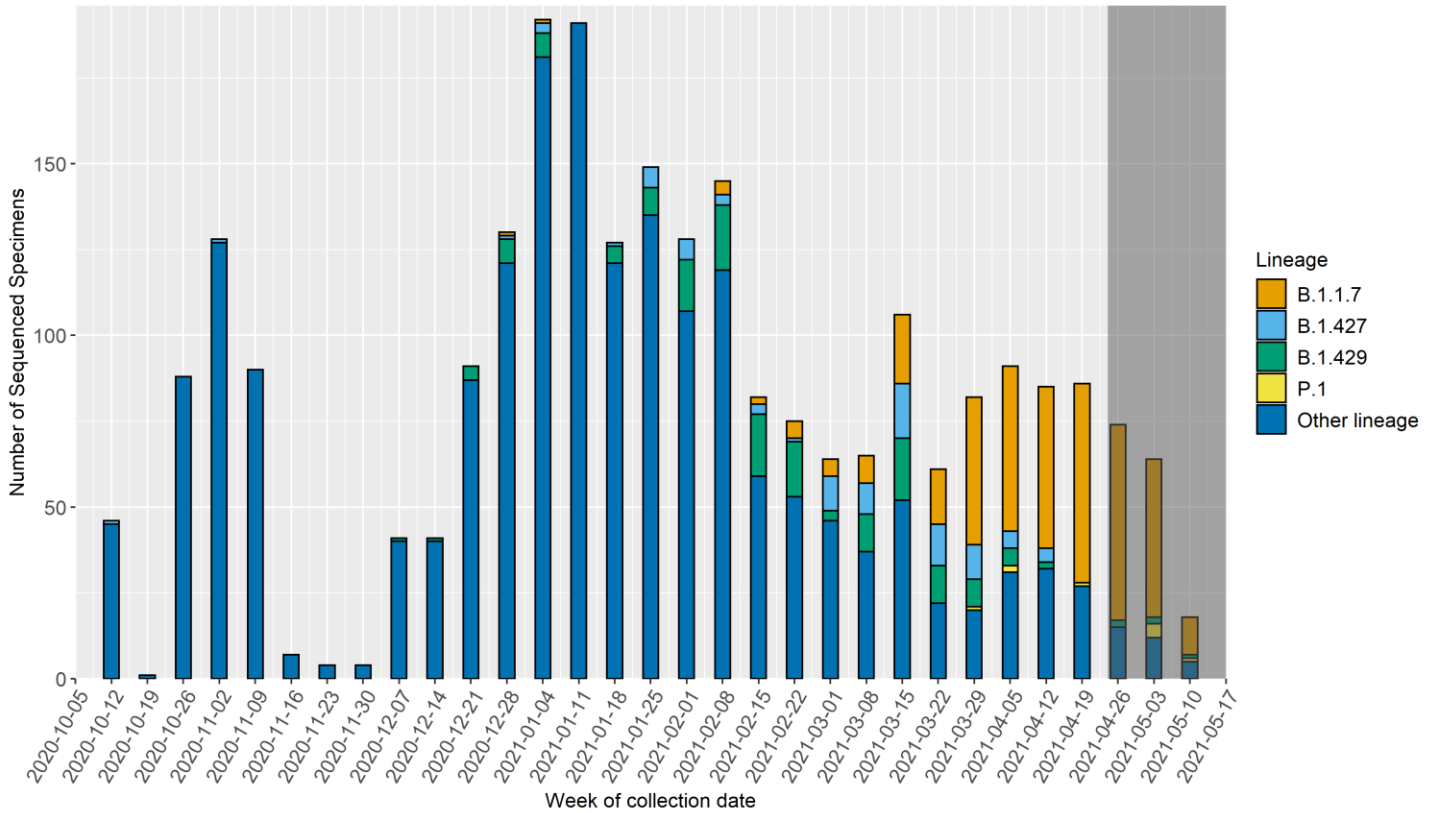
Lineage	Sequenced Cases	Matched Cases*	Percent Matched
<b>B.1.1.7</b>	720	373	52%
<b>B.1.351</b>	3	0	0%
<b>B.1.427</b>	113	96	85%
<b>B.1.429</b>	242	173	71%
<b>P.1</b>	19	9	47%
<b>Non-VOC Lineages</b>	3383	2413	71%
<b>Total</b>	4480	3064	68%

\*Cases are matched to NMDOH case investigation data to provide demographic, disease outcome, and other clinical information.

## Cumulative number of VOC cases, hospitalizations and deaths

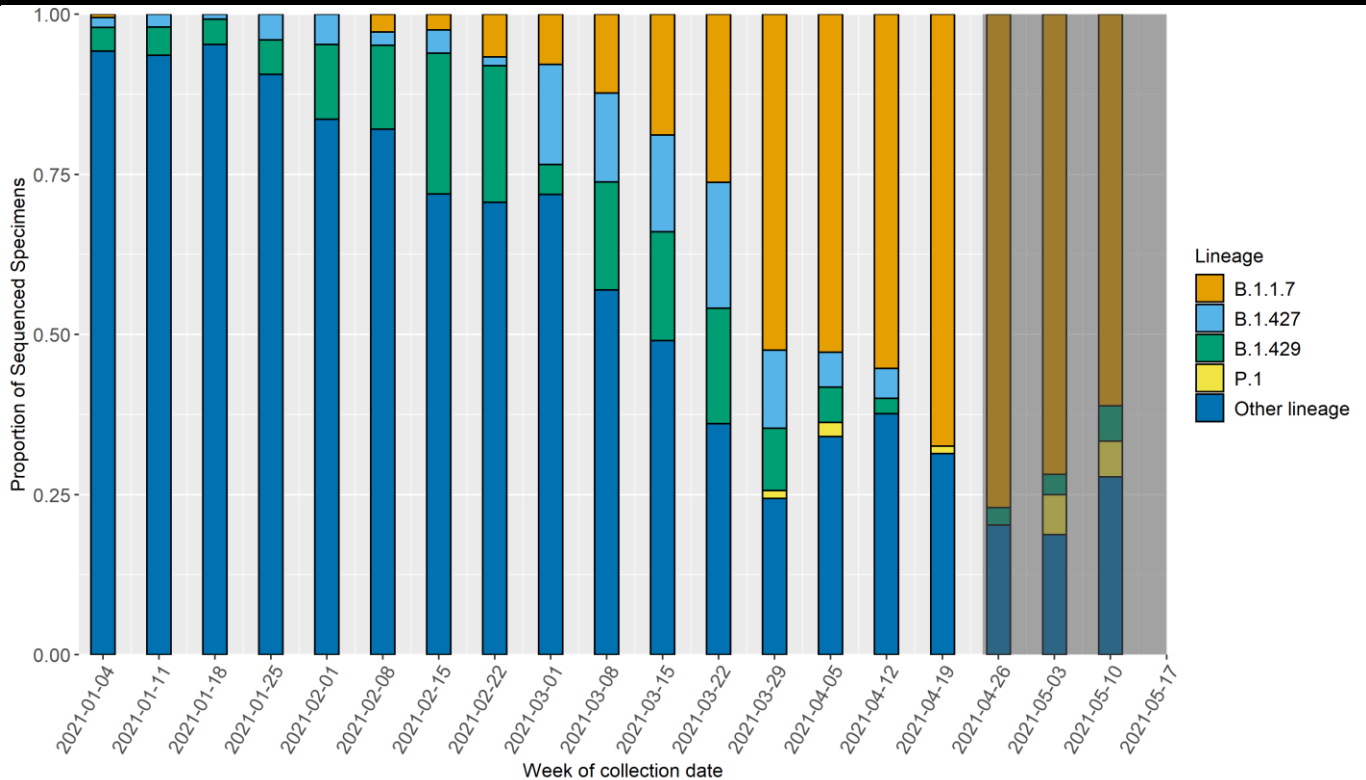
Lineage	Total Cases	Number Hospitalized	Percent Hospitalized	Number Died	Percent Died
<b>B.1.1.7</b>	373	14	4%	0	0%
<b>B.1.427</b>	96	3	3%	0	0%
<b>B.1.429</b>	173	2	1%	1	1%
<b>P.1</b>	9	1	11%	0	0%
<b>Non-VOC Lineages</b>	2413	96	4%	32	1%

## Identified SARS-CoV-2 lineages by week



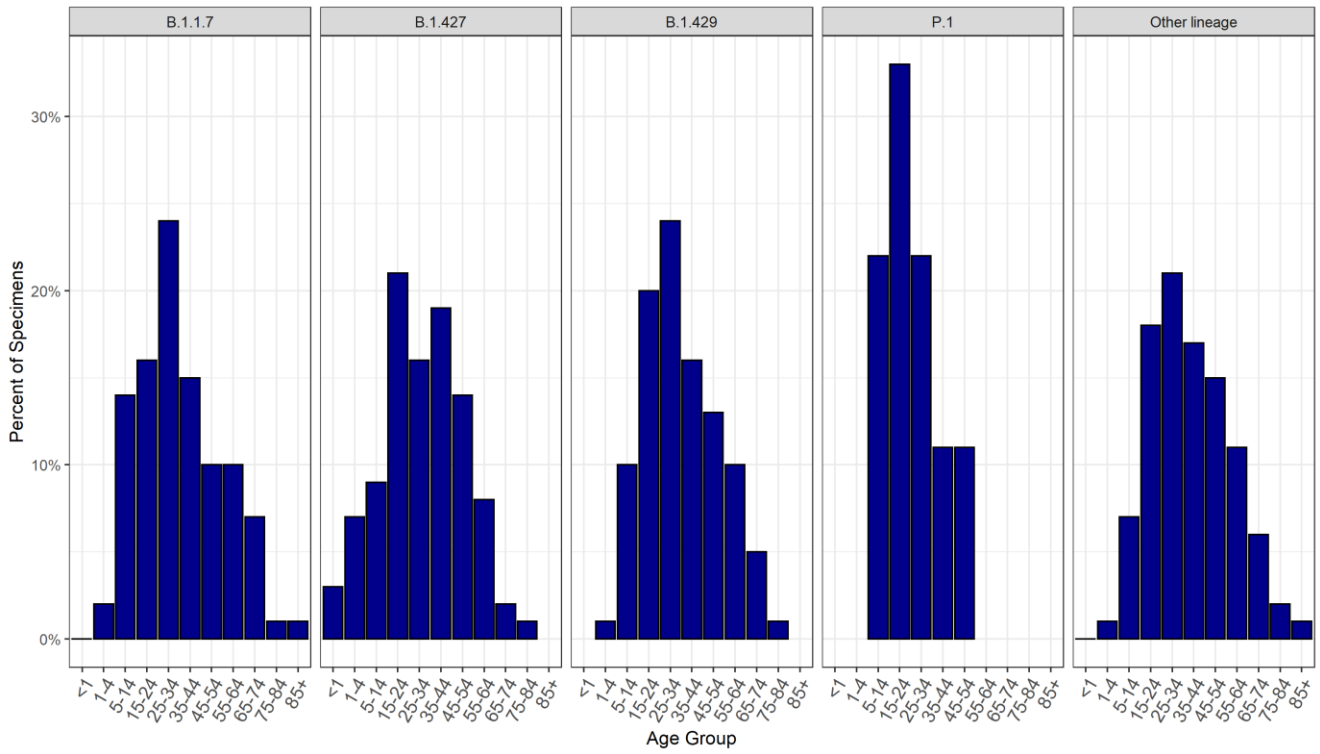
\*The dark grey shaded region represents the lag period between specimen collection and genomic sequencing results.

## Proportion of identified SARS-CoV-2 lineages by week

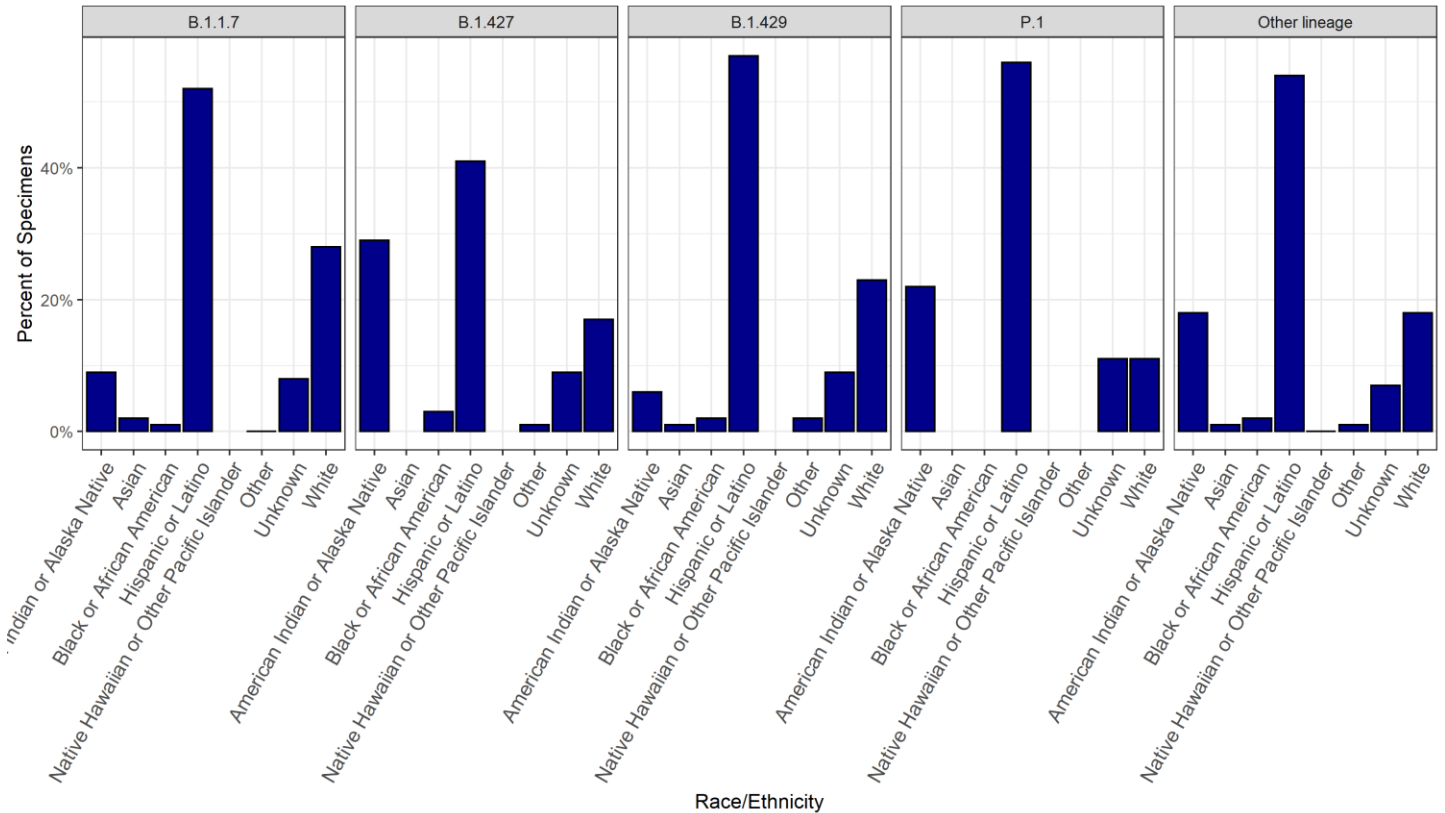


\*The dark grey shaded region represents the lag period between specimen collection and genomic sequencing results

## Cumulative proportion of VOC cases by age group



## Cumulative proportion of VOC cases by race/ethnicity



## Cumulative number of VOC cases by county of residence

Counties with less than 5 matched sequenced cases are not included in the table below

County	B.1.1.7	B.1.427	B.1.429	P.1	Non-VOC lineages
Bernalillo	112	33	71	3	645
Chaves	7	0	0	0	54
Cibola	2	25	4	0	86
Colfax	2	0	1	0	23
Curry	1	1	0	0	13
Dona Ana	39	3	23	1	261
Eddy	11	2	1	0	78
Grant	3	0	7	0	22
Guadalupe	0	0	4	0	11
Lea	4	0	0	0	98
Lincoln	0	0	0	0	20
Los Alamos	8	3	1	0	16
Luna	6	0	0	0	13
McKinley	2	0	2	0	88
Otero	17	0	14	0	168
Rio Arriba	20	1	0	0	31
Roosevelt	0	0	0	0	9
San Juan	64	5	6	5	223
San Miguel	2	1	1	0	44
Sandoval	12	6	7	0	134
Santa Fe	26	8	16	0	238
Socorro	2	2	0	0	25
Taos	8	1	5	0	27
Torrance	1	4	1	0	19
Valencia	24	1	9	0	63

## Percentage of VOC cases reporting any symptoms

Lineage	No Symptoms	Unknown Symptoms	Yes Symptoms	Total Cases	Percent Symptomatic
<b>B.1.1.7</b>	29	69	275	373	74%
<b>B.1.427</b>	8	34	54	96	56%
<b>B.1.429</b>	13	22	138	173	80%
<b>P.1</b>	1	4	4	9	44%
<b>Non-VOC lineages</b>	246	615	1552	2413	64%

## Percentage of specific symptoms reported by symptomatic VOC cases

The table below includes data ONLY from symptomatic cases

Symptom	B.1.1.7 (n)	B.1.427 (n)	B.1.429 (n)	P.1 (n)	Non-VOC (n)
<b>Fever (Measured or Subjective)</b>	47% (128)	52% (28)	46% (64)	50% (2)	44% (675)
<b>Chills</b>	46% (124)	57% (31)	45% (62)	50% (2)	44% (674)
<b>Muscle Aches</b>	59% (161)	63% (34)	64% (89)	75% (3)	56% (857)
<b>Runny Nose</b>	62% (167)	67% (36)	60% (83)	75% (3)	54% (823)
<b>Sore Throat</b>	50% (135)	48% (26)	44% (61)	25% (1)	43% (656)
<b>Cough</b>	71% (193)	74% (40)	66% (91)	100% (4)	64% (983)
<b>Shortness of Breath</b>	25% (67)	35% (19)	17% (23)	25% (1)	25% (379)
<b>Nausea/Vomiting</b>	25% (69)	28% (15)	22% (31)	25% (1)	22% (338)
<b>Headache</b>	70% (191)	57% (31)	72% (100)	50% (2)	65% (1002)
<b>Abdominal Pain</b>	17% (45)	15% (8)	12% (16)	25% (1)	14% (213)
<b>Diarrhea</b>	32% (86)	26% (14)	30% (41)	0% (0)	26% (395)
<b>Fatigue</b>	72% (194)	78% (42)	67% (92)	75% (3)	65% (998)
<b>Loss of Appetite</b>	39% (106)	39% (21)	36% (50)	25% (1)	36% (549)
<b>Loss of Taste or Smell</b>	40% (108)	46% (25)	56% (77)	50% (2)	47% (718)

## Percentage of VOC cases reporting underlying conditions

Lineage	No	Unknown	Yes	Total Cases	Percent with underlying conditions
<b>B.1.1.7</b>	173	80	120	373	32%
<b>B.1.427</b>	33	42	21	96	22%
<b>B.1.429</b>	76	46	51	173	30%
<b>P.1</b>	3	4	2	9	22%
<b>Non-VOC</b>	763	1050	600	2413	25%

## Percentage of specific underlying conditions reported by VOC cases

Data below includes ONLY cases who report having a pre-existing condition.

Condition	B.1.1.7 (n)	B.1.427 (n)	B.1.429 (n)	P.1 (n)	Non-VOC (n)
Chronic Lung Disease	19% (22)	35% (7)	16% (8)	0% (0)	27% (154)
Chronic Liver Disease	3% (3)	0% (0)	0% (0)	0% (0)	4% (25)
Chronic Renal Disease	1% (1)	5% (1)	2% (1)	0% (0)	3% (19)
Diabetes Mellitus	15% (18)	5% (1)	14% (7)	0% (0)	22% (123)
Cardiovascular Disease	31% (36)	20% (4)	18% (9)	0% (0)	25% (144)
Autoimmune Disease	3% (4)	15% (3)	4% (2)	0% (0)	5% (27)
Neurological Disability	5% (6)	20% (4)	2% (1)	0% (0)	9% (53)
Current or Former Smoker	58% (68)	30% (6)	71% (35)	100% (1)	50% (285)

\* Note: One P.1 variant case reported an underlying condition that is not included on the list above.

## Data Sources

- **COVID-19 data**
  - **New Mexico Electronic Disease Surveillance System (NM-EDSS)**, Infectious Disease Epidemiology Bureau, Epidemiology and Response Division, New Mexico Department of Health.
  - **Salesforce/MTX COVID-19 Case Investigation Platform.**
- **Sequencing data**
  - New Mexico Department of Health (NMDOH) receives sequencing data for specimens sequenced at the NMDOH Scientific Laboratory Division (SLD), University of New Mexico, Centers for Disease Control and Prevention (CDC), Aegis, LabCorp, and Fulgent Genetics.
- **Variants of concern (VOC)** are defined by Centers for Disease Control and Prevention:  
<https://www.cdc.gov/coronavirus/2019-ncov/cases-updates/variant-surveillance/variant-info.html>.

## Data Notes

- **The data reported in this weekly update may not match the daily numbers that are reported in the New Mexico Department of Health (NMDOH) press releases and/or the NMDOH COVID-19 data dashboard. This may be due to variation in the date and time of data extraction from NM-EDSS, corrections after quality assurance review, and differences in the exclusion criteria.**
- **New Mexico Electronic Disease Surveillance System (NM-EDSS).** Disease incidence data are derived from reports of notifiable infectious diseases. NMDOH relies on health care providers, laboratories, hospitals, clinics, institutions and individuals to report suspected and confirmed notifiable infectious diseases in accordance with New Mexico Administrative Code 7.4.3.13. Under-reporting can occur due to of lack of awareness about reporting requirements or lack of compliance with those requirements. Not all cases of infectious diseases can be detected for various reasons including lack of access to health care services, lack of laboratory testing or concerns about confidentiality. Specific and standardized national case definitions are used to classify disease reports by case status.
- **Race/Ethnicity.** Race/Ethnicity are reported as a single variable according to the selection of the case. Any case who is Hispanic is in the Hispanic category and all other races are non-Hispanic.