

COVID-19 Variant of Concern (VOC) Case Report

May 31, 2021

Cases reported here include cases with specimens sequenced at the Scientific Laboratory Division (SLD), University of New Mexico, Centers for Disease Control and Prevention (CDC), Aegis, LabCorp, and Fulgent Genetics. Variants of concern (VOC) are defined by Centers for Disease Control and Prevention: <https://www.cdc.gov/coronavirus/2019-ncov/cases-updates/variant-surveillance/variant-info.html>.

Cumulative number of Specimens Sequenced and Matched to Case Investigations

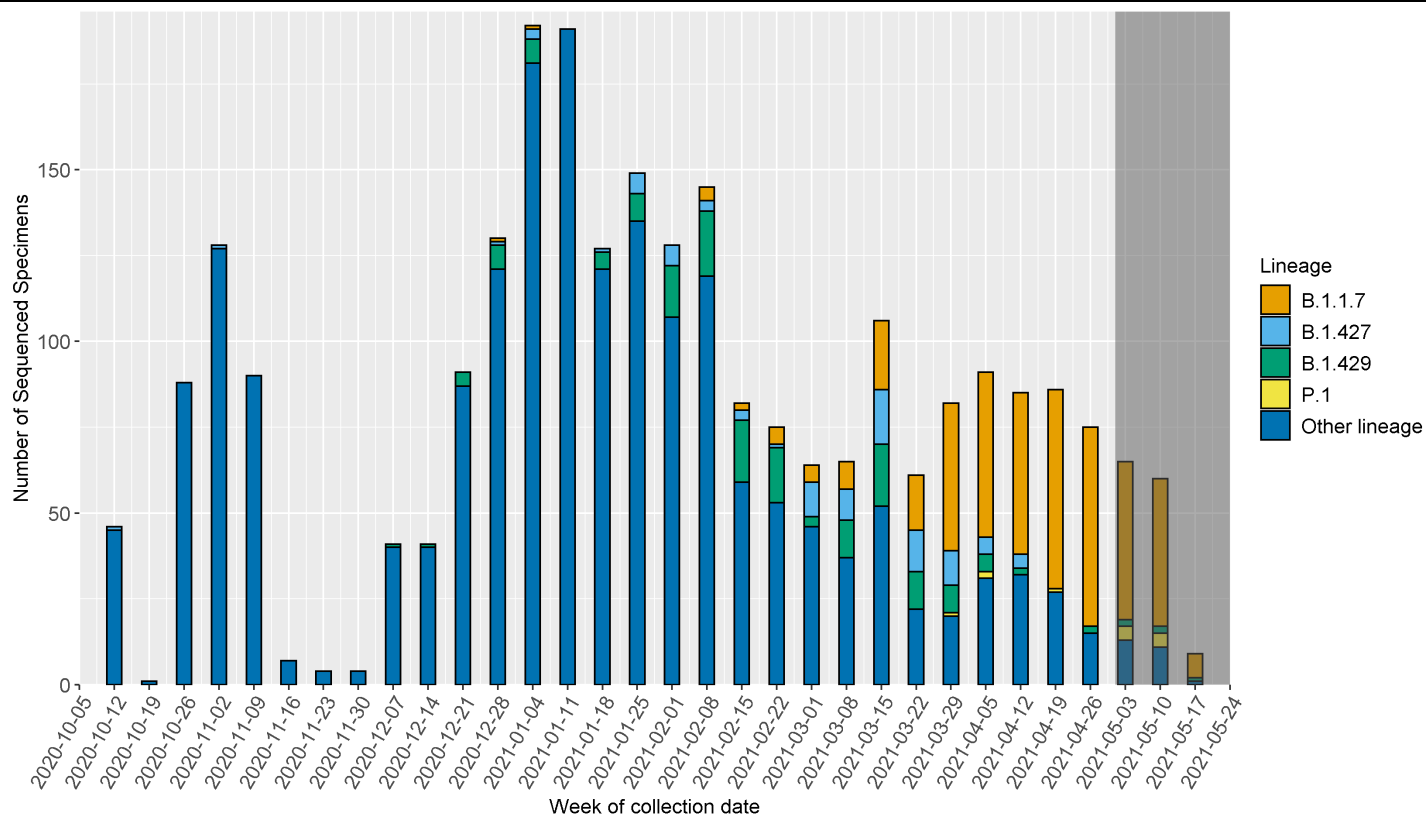
Lineage	Sequenced Cases	Matched Cases*	Percent Matched
B.1.1.7	768	413	54%
B.1.351	3	0	0%
B.1.427	116	96	83%
B.1.429	252	175	69%
P.1	22	12	55%
Non-VOC Lineages	3419	2421	71%
Total	4580	3117	68%

*Cases are matched to NMDOH case investigation data to provide demographic, disease outcome, and other clinical information.

Cumulative number of VOC cases, hospitalizations and deaths

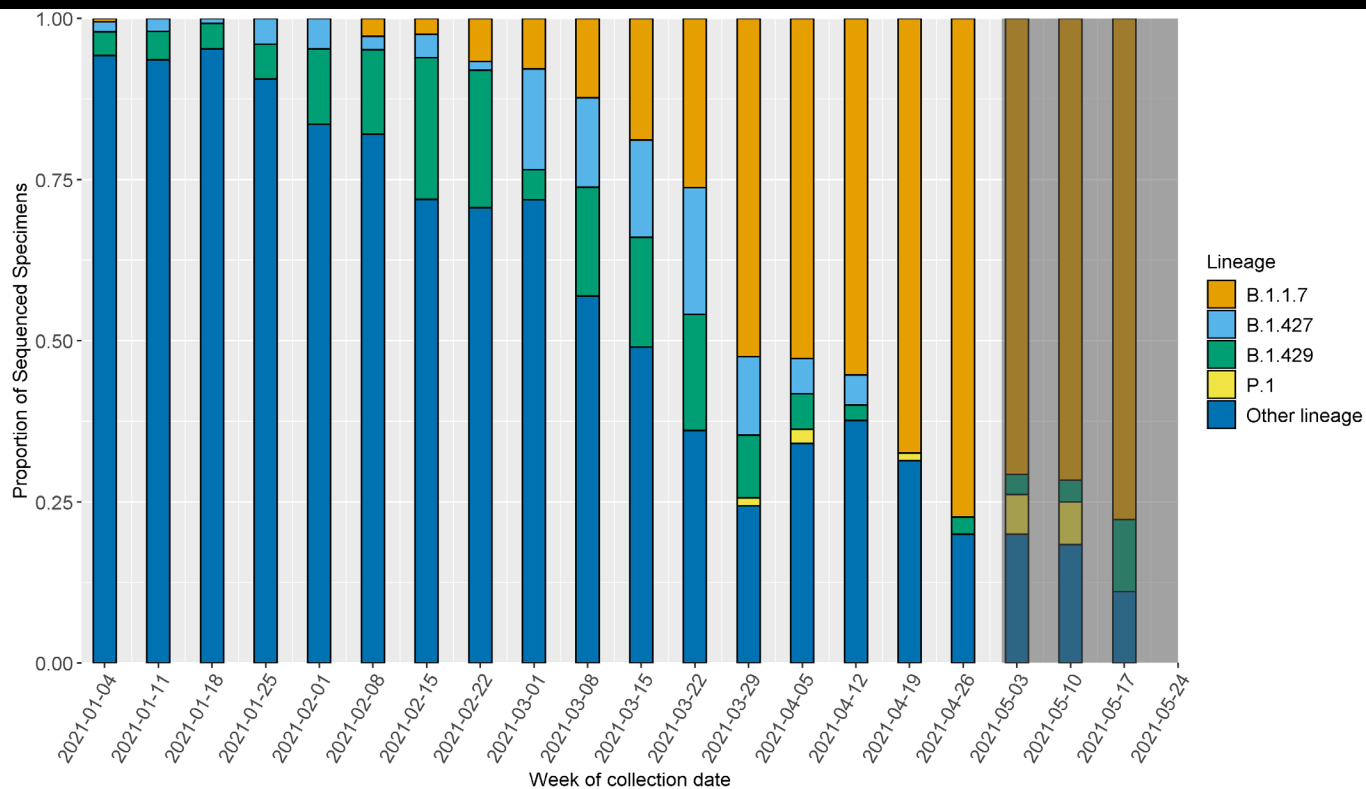
Lineage	Total Cases	Number Hospitalized	Percent Hospitalized	Number Died	Percent Died
B.1.1.7	413	14	3%	0	0%
B.1.427	96	3	3%	0	0%
B.1.429	175	2	1%	1	1%
P.1	12	1	8%	0	0%
Non-VOC Lineages	2421	96	4%	32	1%

Identified SARS-CoV-2 lineages by week



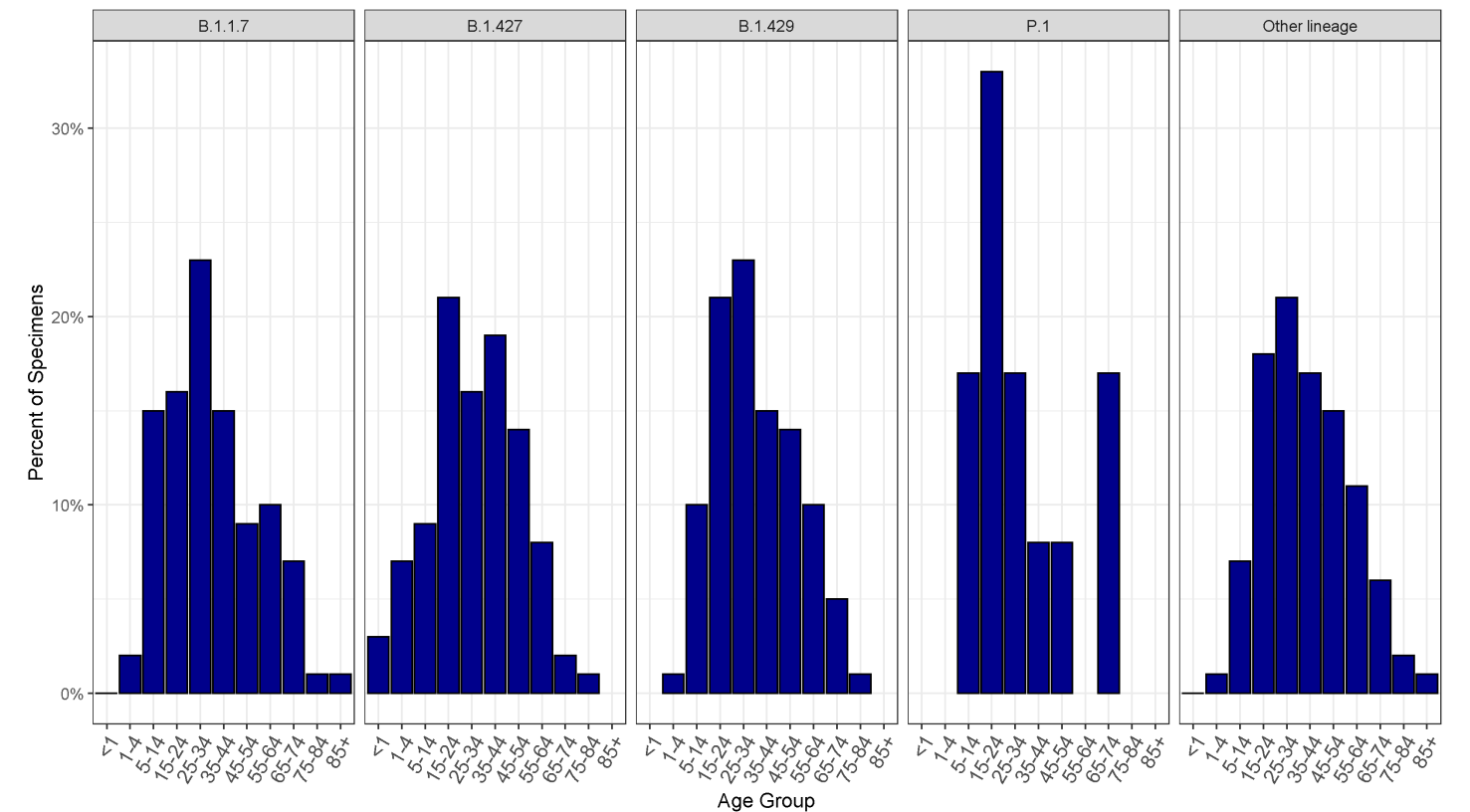
*The dark grey shaded region represents the lag period between specimen collection and genomic sequencing results.

Proportion of identified SARS-CoV-2 lineages by week

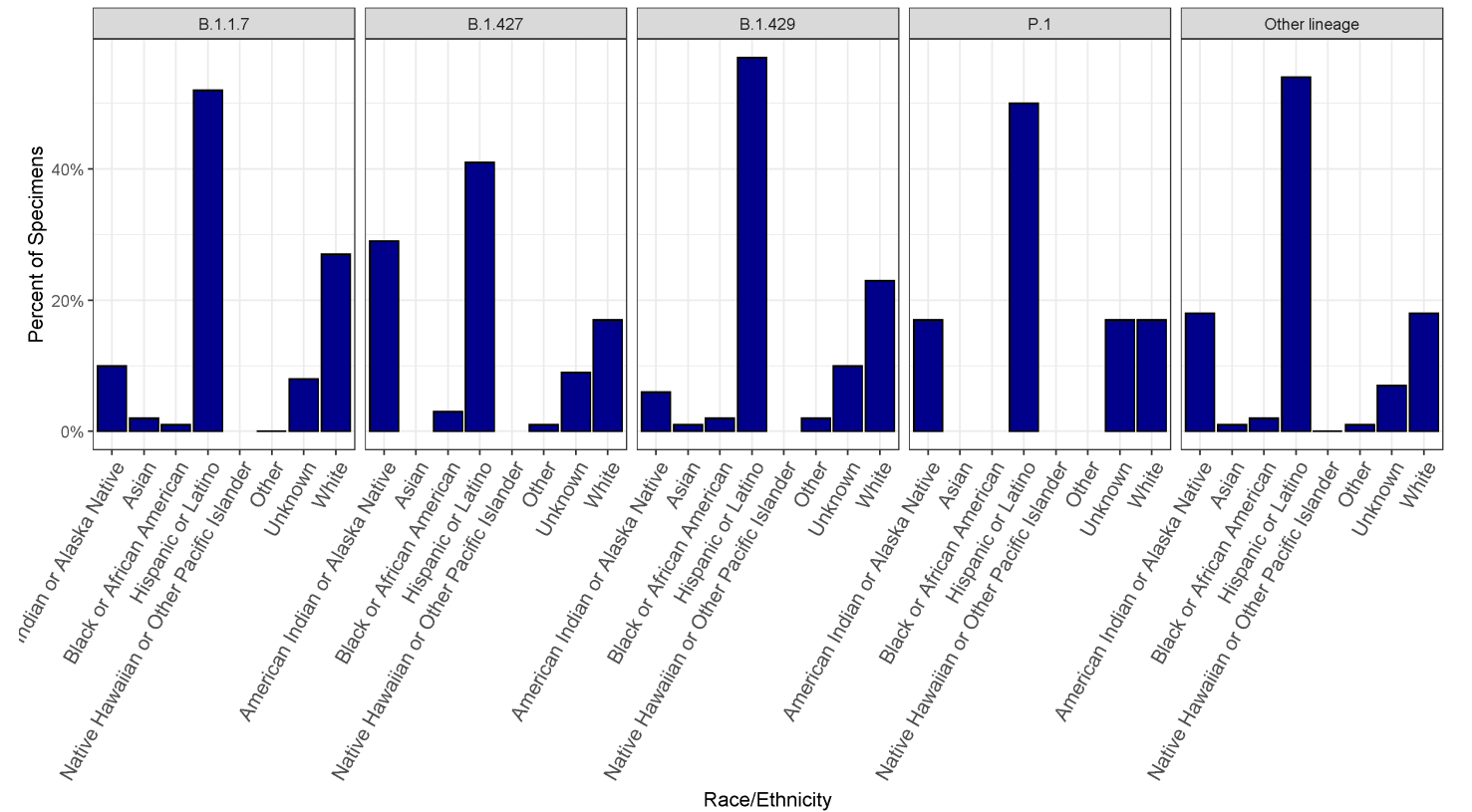


*The dark grey shaded region represents the lag period between specimen collection and genomic sequencing results

Cumulative proportion of VOC cases by age group



Cumulative proportion of VOC cases by race/ethnicity



Cumulative number of VOC cases by county of residence

Counties with less than 5 matched sequenced cases are not included in the table below.

County	B.1.1.7	B.1.427	B.1.429	P.1	Non-VOC lineages
Bernalillo	122	33	71	4	647
Chaves	7	0	0	0	54
Cibola	2	25	4	0	86
Colfax	2	0	1	0	23
Curry	1	1	0	0	13
Dona Ana	41	3	23	1	262
Eddy	14	2	1	0	78
Grant	3	0	7	0	22
Guadalupe	0	0	4	0	11
Lea	4	0	0	0	98
Lincoln	0	0	0	0	20
Los Alamos	8	3	1	0	16
Luna	6	0	0	0	13
McKinley	7	0	2	0	88
Otero	21	0	14	0	171
Rio Arriba	20	1	0	0	31
Roosevelt	0	0	0	0	9
San Juan	75	5	6	7	225
San Miguel	2	1	1	0	44
Sandoval	12	6	7	0	134
Santa Fe	31	8	17	0	238
Socorro	2	2	0	0	25
Taos	8	1	6	0	27
Torrance	1	4	1	0	19
Valencia	24	1	9	0	63

Percentage of VOC cases reporting any symptoms

Lineage	No Symptoms	Unknown Symptoms	Yes Symptoms	Total Cases	Percent Symptomatic
B.1.1.7	32	77	304	413	74%
B.1.427	8	34	54	96	56%
B.1.429	13	23	139	175	79%
P.1	1	4	7	12	58%
Non-VOC lineages	249	615	1557	2421	64%

Percentage of specific symptoms reported by symptomatic VOC cases

The table below includes data ONLY from symptomatic cases

Symptom	B.1.1.7 (n)	B.1.427 (n)	B.1.429 (n)	P.1 (n)	Non-VOC (n)
Fever (Measured or Subjective)	47% (142)	52% (28)	46% (64)	57% (4)	44% (677)
Chills	45% (135)	57% (31)	45% (63)	57% (4)	44% (676)
Muscle Aches	59% (175)	63% (34)	65% (90)	43% (3)	56% (860)
Runny Nose	61% (181)	67% (36)	60% (83)	43% (3)	54% (825)
Sore Throat	49% (146)	48% (26)	44% (61)	14% (1)	43% (659)
Cough	72% (214)	74% (40)	66% (92)	100% (7)	64% (986)
Shortness of Breath	25% (76)	35% (19)	17% (23)	14% (1)	25% (380)
Nausea/Vomiting	25% (75)	28% (15)	23% (32)	14% (1)	22% (340)
Headache	69% (206)	57% (31)	73% (101)	43% (3)	65% (1005)
Abdominal Pain	16% (48)	15% (8)	12% (17)	14% (1)	14% (213)
Diarrhea	31% (93)	26% (14)	29% (41)	0% (0)	26% (398)
Fatigue	70% (210)	78% (42)	67% (93)	71% (5)	65% (1002)
Loss of Appetite	38% (113)	39% (21)	37% (51)	14% (1)	36% (550)
Loss of Taste or Smell	40% (119)	46% (25)	56% (78)	29% (2)	47% (720)

Percentage of VOC cases reporting underlying conditions

Lineage	No	Unknown	Yes	Total Cases	Percent with underlying conditions
B.1.1.7	195	89	129	413	31%
B.1.427	33	42	21	96	22%
B.1.429	76	47	52	175	30%
P.1	4	4	4	12	33%
Non-VOC	768	1050	603	2421	25%

Percentage of specific underlying conditions reported by VOC cases

Data below includes ONLY cases who report having a pre-existing condition.

Condition	B.1.1.7 (n)	B.1.427 (n)	B.1.429 (n)	P.1 (n)	Non-VOC (n)
Chronic Lung Disease	19% (24)	35% (7)	16% (8)	0% (0)	27% (156)
Chronic Liver Disease	2% (3)	0% (0)	0% (0)	0% (0)	4% (25)
Chronic Renal Disease	1% (1)	5% (1)	2% (1)	0% (0)	3% (19)
Diabetes Mellitus	15% (19)	5% (1)	14% (7)	0% (0)	22% (123)
Cardiovascular Disease	30% (38)	20% (4)	18% (9)	33% (1)	26% (146)
Autoimmune Disease	4% (5)	15% (3)	4% (2)	33% (1)	5% (28)
Neurological Disability	6% (7)	20% (4)	2% (1)	33% (1)	9% (53)
Current or Former Smoker	60% (75)	30% (6)	72% (36)	33% (1)	50% (285)

* Note: One P.1 variant case reported an underlying condition that is not included on the list above.

Data Sources

- **COVID-19 data**
 - **New Mexico Electronic Disease Surveillance System (NM-EDSS)**, Infectious Disease Epidemiology Bureau, Epidemiology and Response Division, New Mexico Department of Health.
 - **Salesforce/MTX COVID-19 Case Investigation Platform.**
- **Sequencing data**
 - New Mexico Department of Health (NMDOH) receives sequencing data for specimens sequenced at the NMDOH Scientific Laboratory Division (SLD), University of New Mexico, Centers for Disease Control and Prevention (CDC), Aegis, LabCorp, and Fulgent Genetics.
- **Variants of concern (VOC)** are defined by Centers for Disease Control and Prevention:
<https://www.cdc.gov/coronavirus/2019-ncov/cases-updates/variant-surveillance/variant-info.html>.

Data Notes

- **The data reported in this weekly update may not match the daily numbers that are reported in the New Mexico Department of Health (NMDOH) press releases and/or the NMDOH COVID-19 data dashboard. This may be due to variation in the date and time of data extraction from NM-EDSS, corrections after quality assurance review, and differences in the exclusion criteria.**
- **New Mexico Electronic Disease Surveillance System (NM-EDSS).** Disease incidence data are derived from reports of notifiable infectious diseases. NMDOH relies on health care providers, laboratories, hospitals, clinics, institutions and individuals to report suspected and confirmed notifiable infectious diseases in accordance with New Mexico Administrative Code 7.4.3.13. Under-reporting can occur due to lack of awareness about reporting requirements or lack of compliance with those requirements. Not all cases of infectious diseases can be detected for various reasons including lack of access to health care services, lack of laboratory testing or concerns about confidentiality. Specific and standardized national case definitions are used to classify disease reports by case status.
- **Race/Ethnicity.** Race/Ethnicity are reported as a single variable according to the selection of the case. Any case who is Hispanic is in the Hispanic category and all other races are non-Hispanic.