

COVID-19 Variant of Concern (VOC) Case Report

June 14, 2021

Cases reported here include cases with specimens sequenced at the Scientific Laboratory Division (SLD), University of New Mexico, Centers for Disease Control and Prevention (CDC), Aegis, LabCorp, and Fulgent Genetics. Variants of concern (VOC) are defined by Centers for Disease Control and Prevention: <https://www.cdc.gov/coronavirus/2019-ncov/cases-updates/variant-surveillance/variant-info.html>.

Cumulative number of Specimens Sequenced and Matched to Case Investigations

Lineage	Sequenced Cases	Matched Cases*	Percent Matched
B.1.1.7	1030	711	69%
B.1.351	3	0	0%
B.1.427	140	109	78%
B.1.429	296	195	66%
P.1	36	33	92%
Non-VOC Lineages	3669	2838	77%
Total	5174	3886	75%

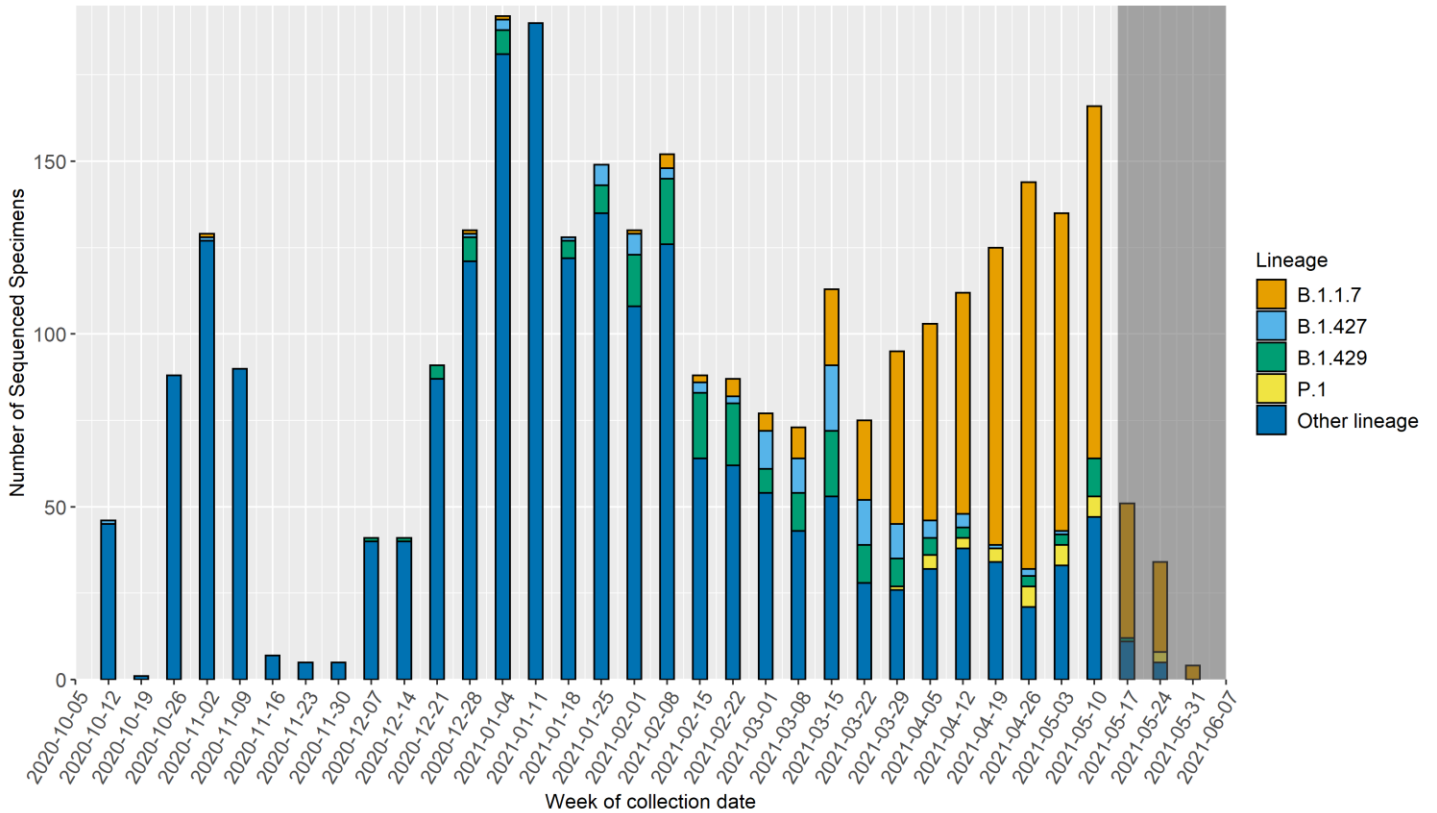
*Cases are matched to NMDOH case investigation data to provide demographic, disease outcome, and other clinical information. This table includes 68 sequences from patients who reside outside New Mexico. These have been removed from the subsequent tables and figures.

Cumulative number of VOC cases, hospitalizations and deaths

Lineage	Total Cases	Number Hospitalized	Percent Hospitalized	Number Died	Percent Died
B.1.1.7	708	58	8%	5	1%
B.1.427	107	3	3%	0	0%
B.1.429	195	3	2%	1	1%
P.1*	33	12	36%	1	3%
Non-VOC Lineages	2775	167	6%	57	2%

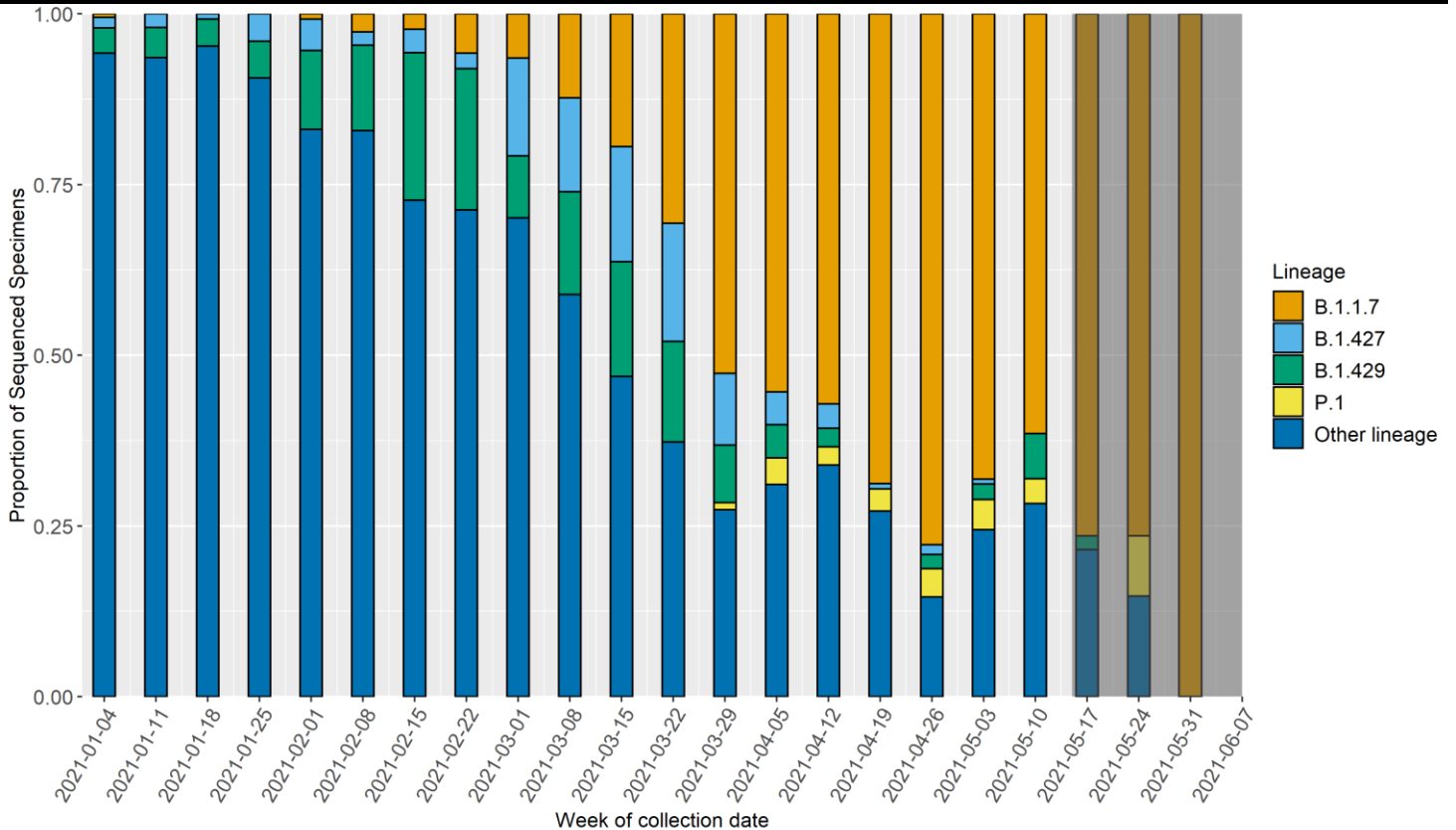
*The specimen submission process for sequencing is not representative. Of the 33 P.1 cases, 14 were collected from a single hospital in San Juan County that submitted specimens on hospital admissions, rather than on a representative set of cases in the county. This is likely increasing the apparent severity of this VOC.

Identified SARS-CoV-2 lineages by week



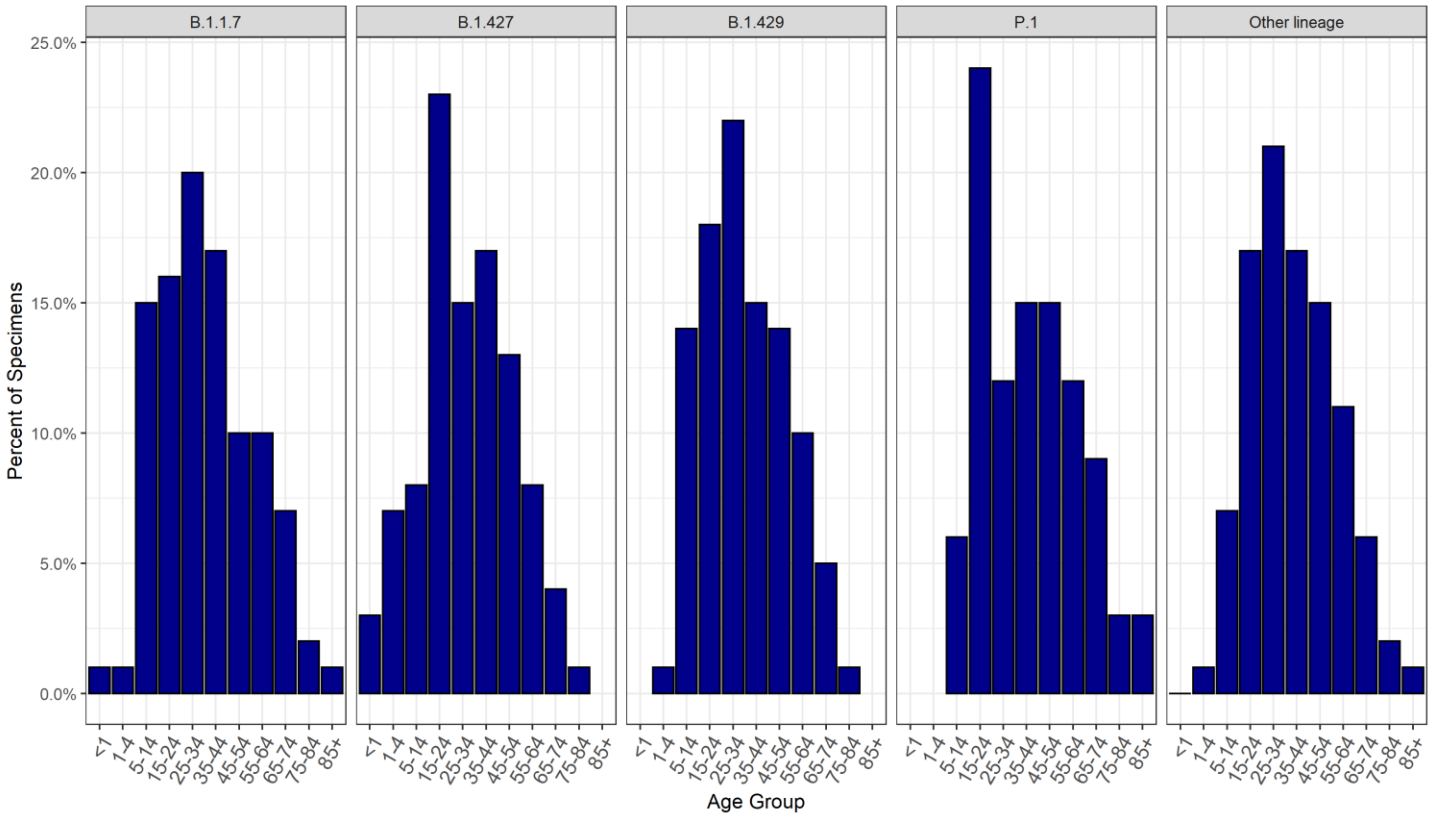
*The dark grey shaded region represents the lag period between specimen collection and genomic sequencing results.

Proportion of identified SARS-CoV-2 lineages by week

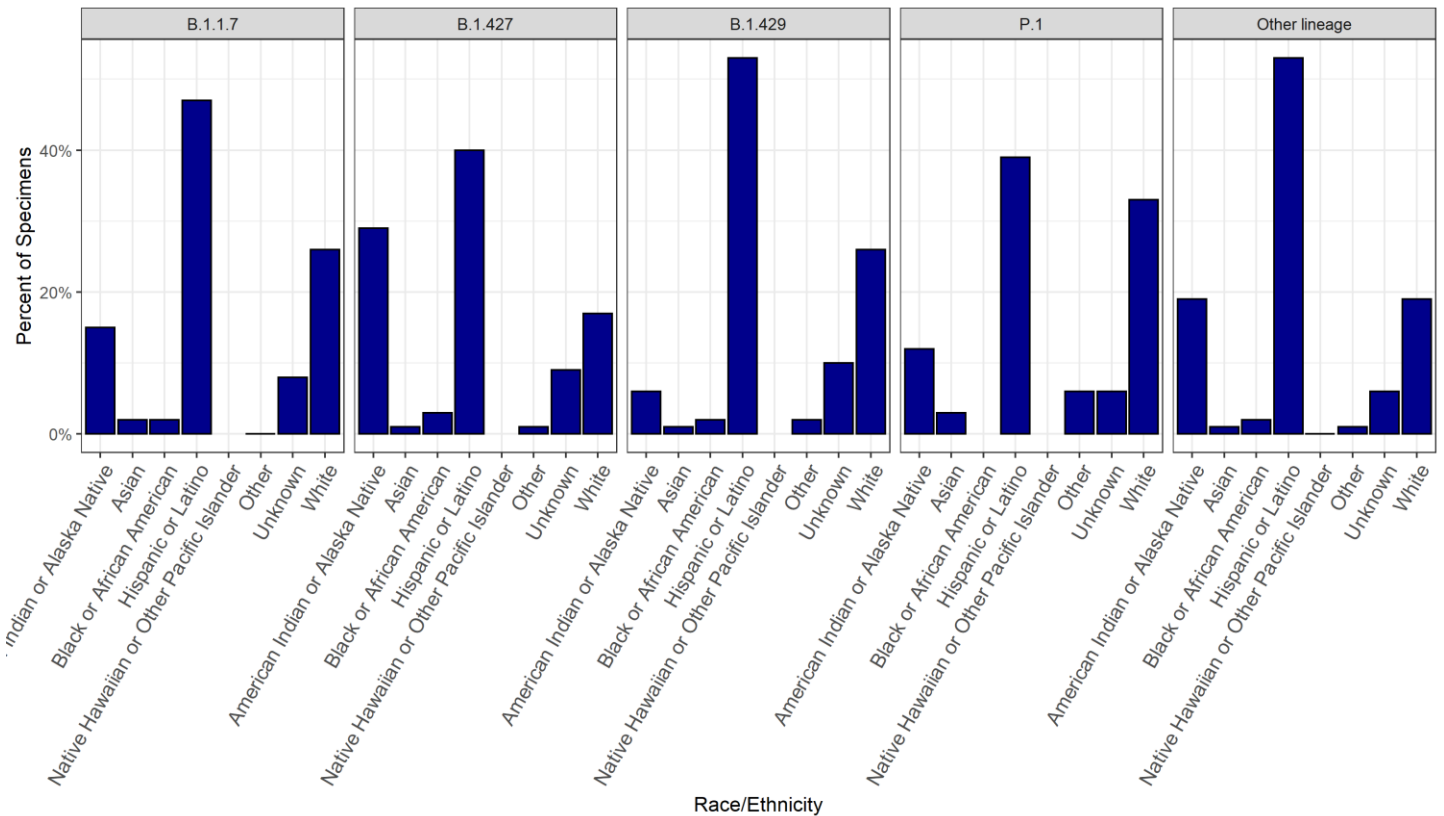


*The dark grey shaded region represents the lag period between specimen collection and genomic sequencing results

Cumulative proportion of VOC cases by age group



Cumulative proportion of VOC cases by race/ethnicity



Cumulative number of VOC cases by county of residence

Counties with less than 5 matched sequenced cases are not included in the table below.

County	B.1.1.7	B.1.427	B.1.429	P.1	Non-VOC lineages
Bernalillo	171	36	77	4	781
Chaves	11	0	0	0	58
Cibola	4	26	4	0	99
Colfax	12	0	1	0	26
Curry	5	2	0	0	19
Dona Ana	47	3	23	1	275
Eddy	15	2	1	0	80
Grant	8	0	7	0	22
Guadalupe	0	0	4	0	17
Lea	5	0	0	0	98
Lincoln	2	0	0	0	27
Los Alamos	8	3	1	0	16
Luna	9	0	0	0	13
McKinley	14	0	2	0	121
Otero	21	0	14	2	181
Rio Arriba	35	1	1	0	33
Roosevelt	0	0	0	0	11
San Juan	214	6	6	26	259
San Miguel	2	1	1	0	46
Sandoval	23	7	7	0	161
Santa Fe	50	8	28	0	246
Sierra	2	0	0	0	4
Socorro	2	2	0	0	25
Taos	10	1	6	0	29
Torrance	4	6	1	0	48
Valencia	33	3	11	0	77

Percentage of VOC cases reporting any symptoms

Lineage	No Symptoms	Unknown Symptoms	Yes Symptoms	Total Cases	Percent Symptomatic
B.1.1.7	43	135	530	708	75%
B.1.427	9	36	62	107	58%
B.1.429	14	25	156	195	80%
P.1	3	6	24	33	73%
Non-VOC lineages	298	696	1781	2775	64%

Percentage of specific symptoms reported by symptomatic VOC cases

The table below includes data ONLY from symptomatic cases

Symptom	B.1.1.7 (n)	B.1.427 (n)	B.1.429 (n)	P.1 (n)	Non-VOC (n)
Fever (Measured or Subjective)	46% (241)	47% (29)	47% (73)	61% (14)	44% (776)
Chills	46% (240)	55% (34)	46% (71)	78% (18)	44% (777)
Muscle Aches	57% (299)	61% (38)	63% (97)	70% (16)	55% (972)
Runny Nose	57% (295)	65% (40)	62% (96)	43% (10)	53% (922)
Sore Throat	47% (245)	48% (30)	46% (71)	48% (11)	42% (733)
Cough	74% (385)	74% (46)	63% (97)	91% (21)	64% (1123)
Shortness of Breath	29% (152)	34% (21)	17% (27)	52% (12)	25% (443)
Nausea/Vomiting	27% (140)	26% (16)	24% (37)	35% (8)	23% (398)
Headache	66% (342)	58% (36)	73% (113)	57% (13)	65% (1135)
Abdominal Pain	16% (85)	15% (9)	14% (21)	9% (2)	14% (254)
Diarrhea	29% (151)	24% (15)	27% (42)	26% (6)	27% (467)
Fatigue	69% (361)	73% (45)	68% (105)	91% (21)	65% (1144)
Loss of Appetite	38% (200)	37% (23)	35% (55)	43% (10)	37% (643)
Loss of Taste or Smell	38% (198)	40% (25)	56% (87)	48% (11)	43% (761)

Percentage of VOC cases reporting underlying conditions

Lineage	No	Unknown	Yes	Total Cases	Percent with underlying conditions
B.1.1.7	318	150	240	708	34%
B.1.427	39	45	23	107	22%
B.1.429	90	50	55	195	28%
P.1	11	6	16	33	49%
Non-VOC	896	1126	753	2775	27%

Percentage of specific underlying conditions reported by VOC cases

Data below includes ONLY cases who report having a pre-existing condition.

Condition	B.1.1.7 (n)	B.1.427 (n)	B.1.429 (n)	P.1 (n)	Non-VOC (n)
Chronic Lung Disease	25% (60)	36% (8)	15% (8)	27% (4)	27% (193)
Chronic Liver Disease	3% (6)	0% (0)	0% (0)	0% (0)	5% (33)
Chronic Renal Disease	2% (5)	9% (2)	2% (1)	13% (2)	4% (30)
Diabetes Mellitus	18% (42)	5% (1)	17% (9)	27% (4)	23% (164)
Cardiovascular Disease	36% (84)	23% (5)	19% (10)	40% (6)	27% (196)
Autoimmune Disease	6% (15)	14% (3)	4% (2)	13% (2)	4% (31)
Neurological Disability	7% (16)	18% (4)	2% (1)	20% (3)	10% (70)
Current or Former Smoker	55% (129)	32% (7)	70% (37)	60% (9)	48% (340)

* Note: One P.1 variant case reported an underlying condition that is not included on the list above.

Data Sources

- **COVID-19 data**
 - **New Mexico Electronic Disease Surveillance System (NM-EDSS)**, Infectious Disease Epidemiology Bureau, Epidemiology and Response Division, New Mexico Department of Health.
 - **Salesforce/MTX COVID-19 Case Investigation Platform.**
- **Sequencing data**
 - New Mexico Department of Health (NMDOH) receives sequencing data for specimens sequenced at the NMDOH Scientific Laboratory Division (SLD), University of New Mexico, Centers for Disease Control and Prevention (CDC), Aegis, LabCorp, and Fulgent Genetics.
- **Variants of concern (VOC)** are defined by Centers for Disease Control and Prevention:
<https://www.cdc.gov/coronavirus/2019-ncov/cases-updates/variant-surveillance/variant-info.html>.

Data Notes

- **The data reported in this weekly update may not match the daily numbers that are reported in the New Mexico Department of Health (NMDOH) press releases and/or the NMDOH COVID-19 data dashboard. This may be due to variation in the date and time of data extraction from NM-EDSS, corrections after quality assurance review, and differences in the exclusion criteria.**
- **New Mexico Electronic Disease Surveillance System (NM-EDSS).** Disease incidence data are derived from reports of notifiable infectious diseases. NMDOH relies on health care providers, laboratories, hospitals, clinics, institutions and individuals to report suspected and confirmed notifiable infectious diseases in accordance with New Mexico Administrative Code 7.4.3.13. Under-reporting can occur due to of lack of awareness about reporting requirements or lack of compliance with those requirements. Not all cases of infectious diseases can be detected for various reasons including lack of access to health care services, lack of laboratory testing or concerns about confidentiality. Specific and standardized national case definitions are used to classify disease reports by case status.
- **Race/Ethnicity.** Race/Ethnicity are reported as a single variable according to the selection of the case. Any case who is Hispanic is in the Hispanic category and all other races are non-Hispanic.