

# NEW MEXICO COVID-19 HOSPITALIZATION UPDATE

June 7<sup>th</sup> 2021

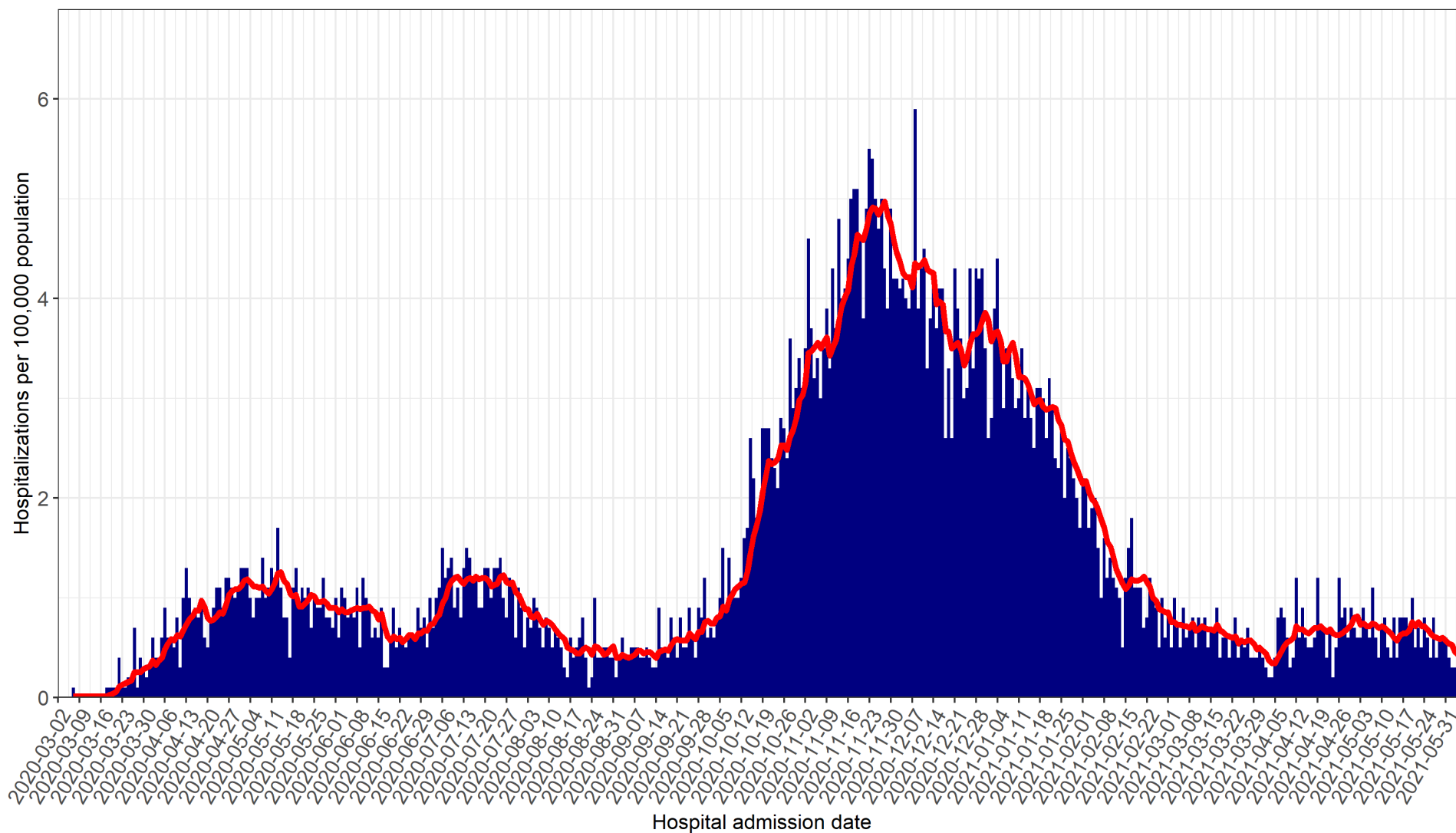
Unless stated otherwise, all data reported here exclude hospitalized patients who are from out-of-state and hospitalized patients who are federal detainees held in private prisons in New Mexico.

Total Hospital Admissions	Hospital Admissions in the Last 7 Days
13,819	53

Total number and percentage of hospitalized patients who died	3,056 (22.1%)
---	---------------

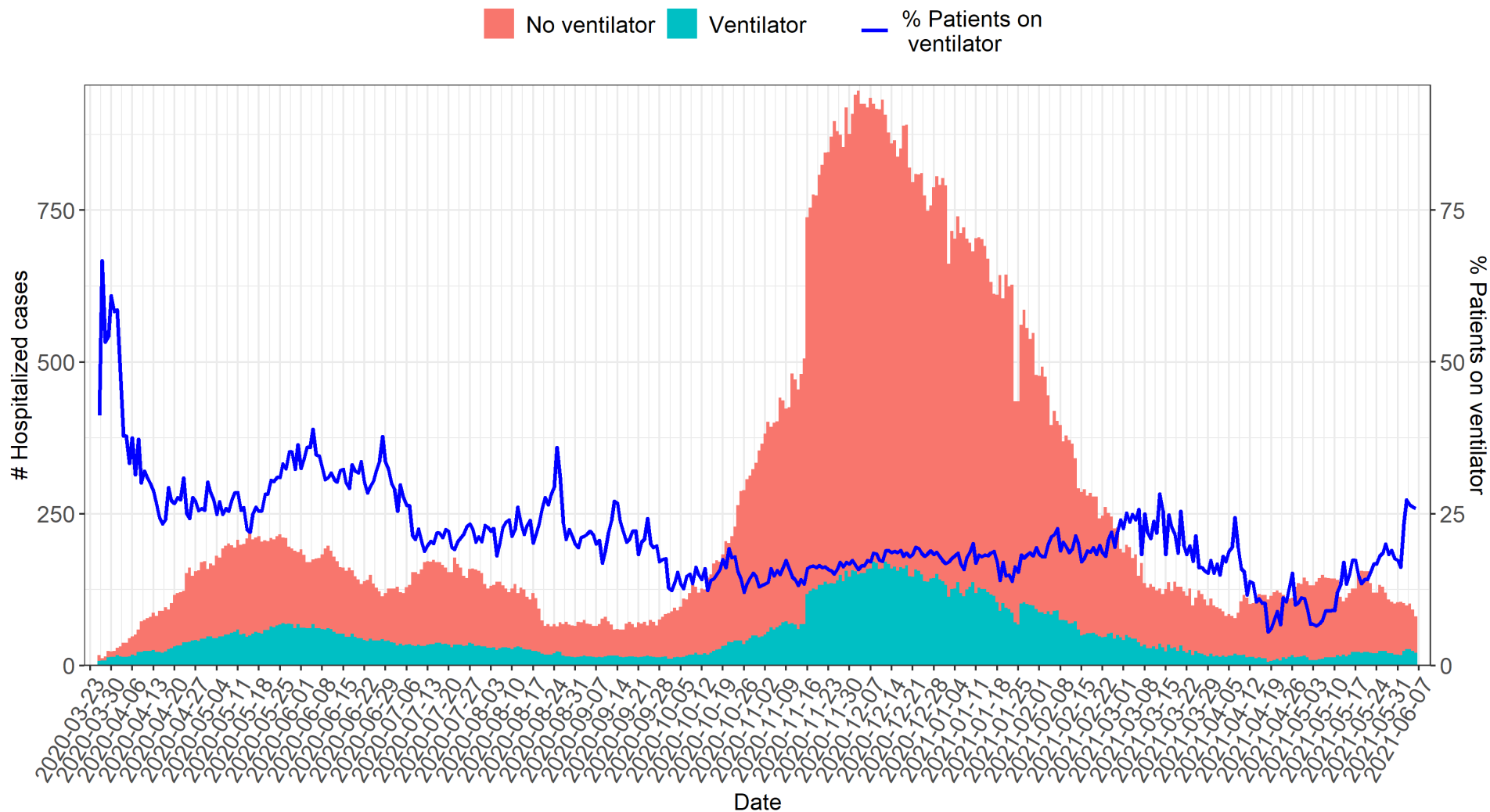
## SECTION 1: STATEWIDE AND COUNTY-LEVEL HOSPITALIZATION RATES

New hospital admissions per 100,000 population each day with a 7-day rolling average



329 cases with missing hospital admission dates were excluded. Hospital admissions in the last week may not yet be reported.

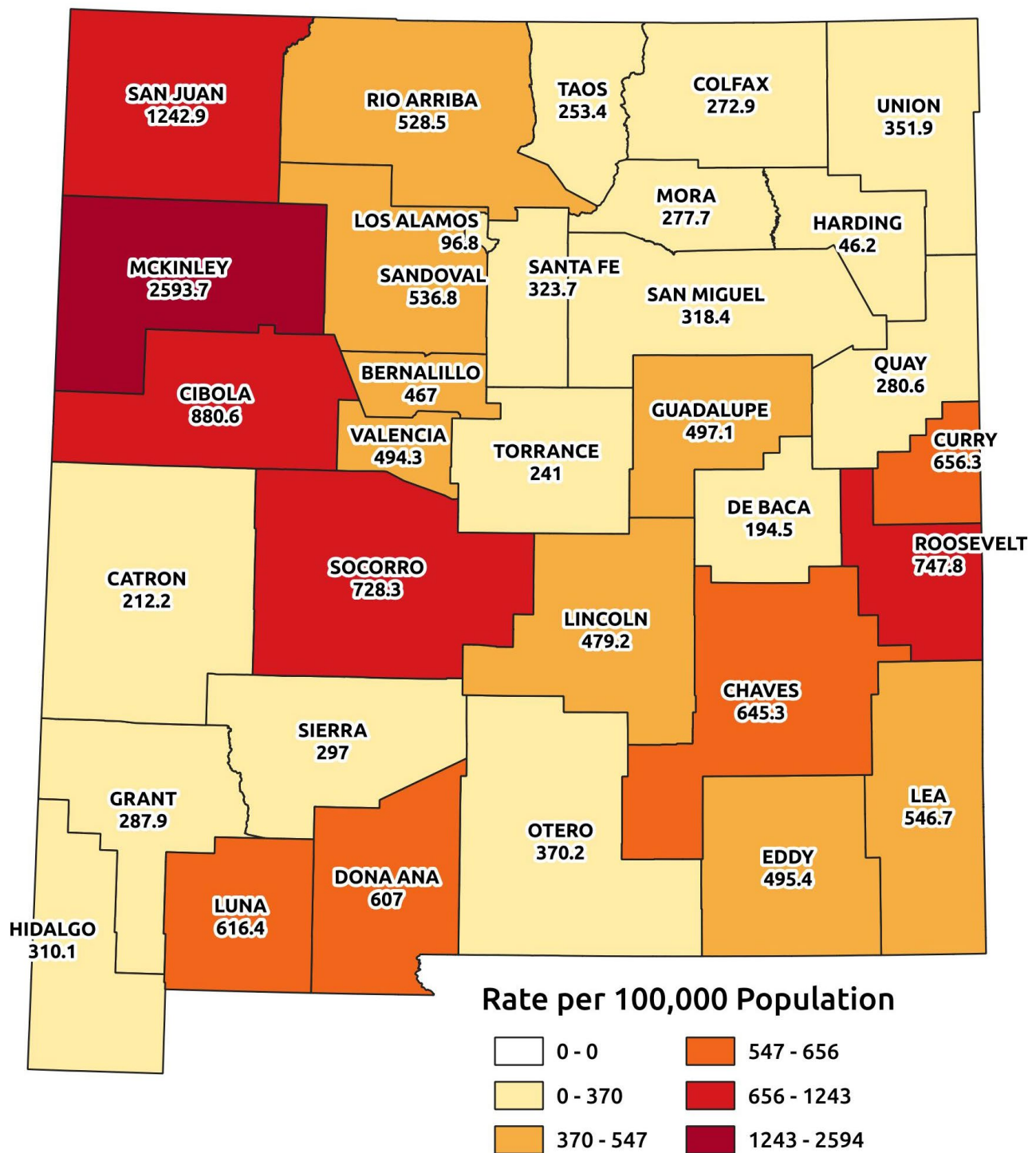
## Daily number of reported hospitalized cases and percentage requiring ventilator



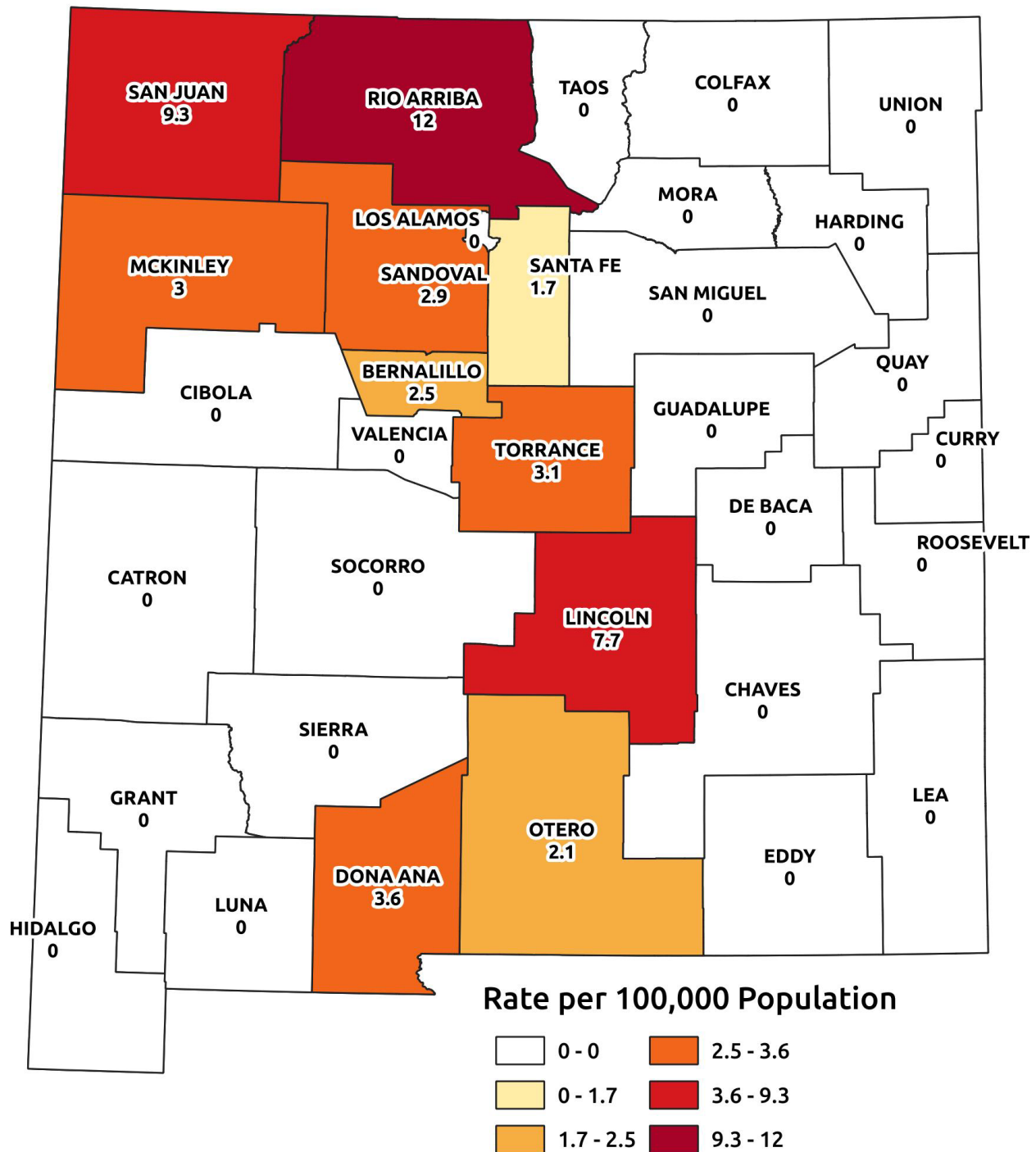
**Note:** Hospitalization numbers were lower than expected on January 25, 2021 due to several facilities not reporting.

The daily number of hospitalizations includes patients who are ICE detainees. For each day, the number of hospitalized patients is separated into those who are on ventilators (green bars) and those patients who are not on ventilators (red bars). The blue line indicates the percentage of daily hospitalized patients on ventilator each day.

## Cumulative age-adjusted hospital admissions per 100,000 by New Mexico County



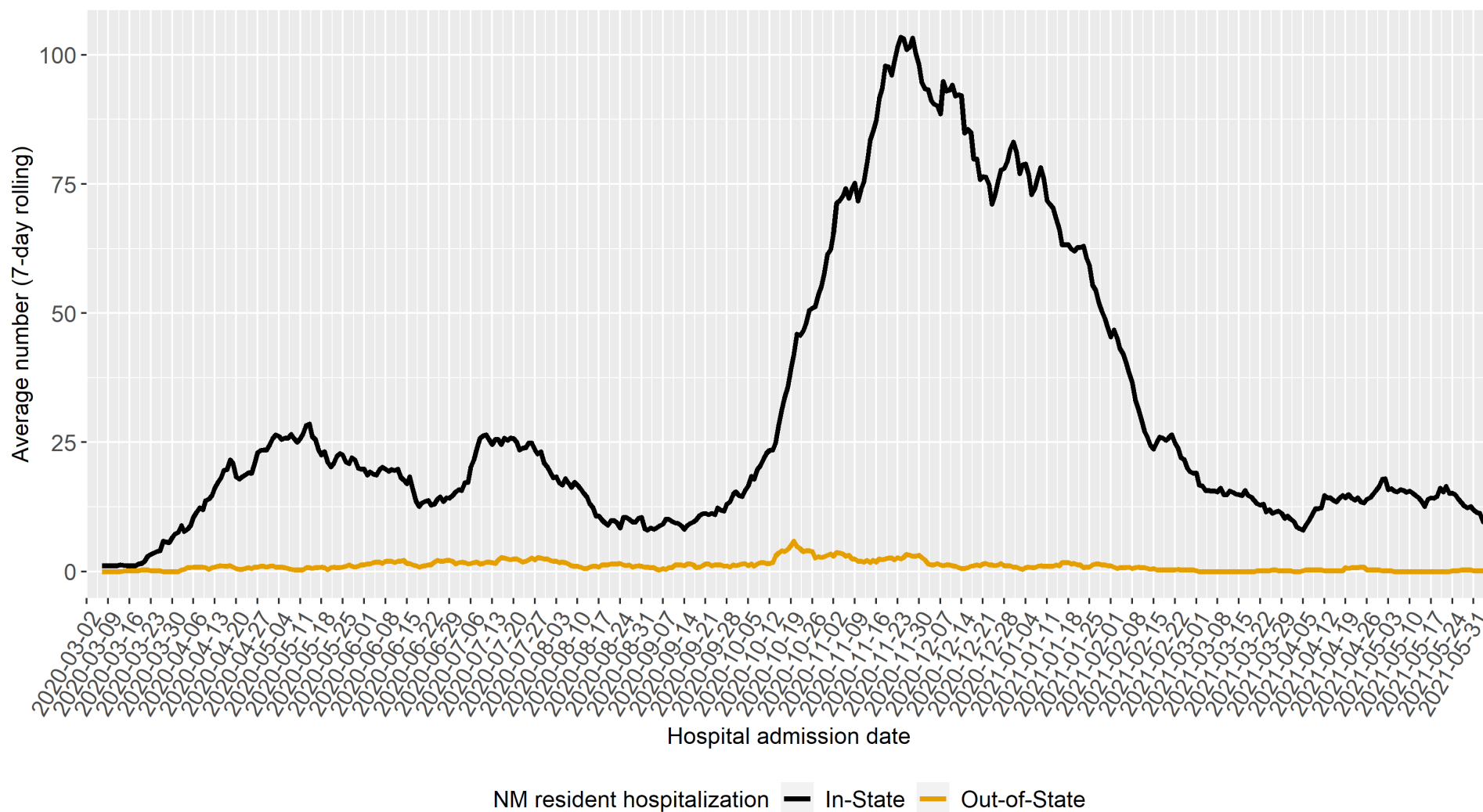
**New age-adjusted hospital admissions per 100,000 population by New Mexico County in the last 7 days**  
**[May 24, 2021 – May 30, 2021]**



Hospital admissions in the last week may not yet be reported.

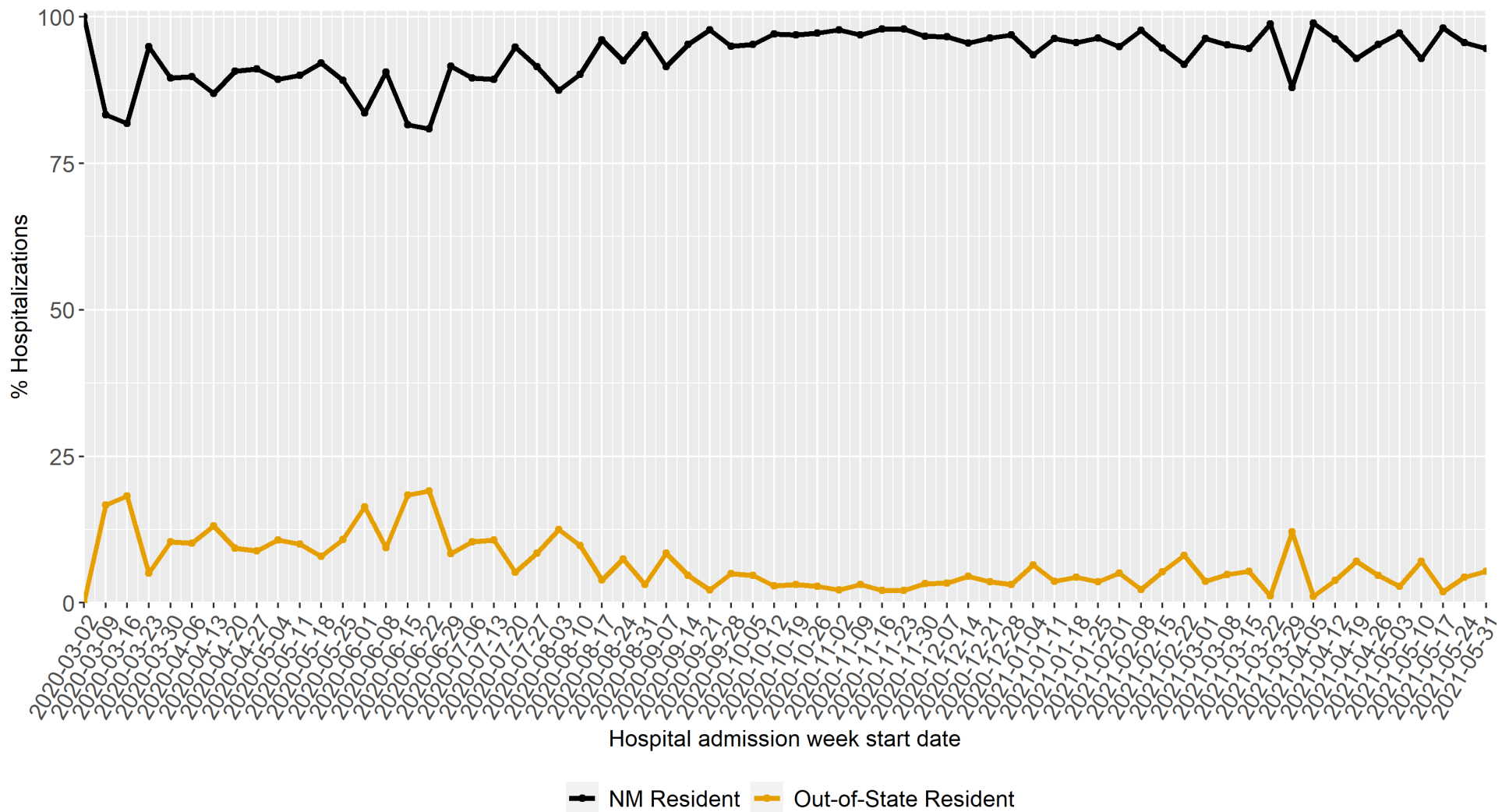
## SECTION 2: NEW MEXICO AND OUT-OF-STATE RESIDENT HOSPITALIZATIONS

Daily number of New Mexico resident hospital admissions in-state and out-of-state (7-day rolling average)



323 cases with missing hospital admission dates were excluded. Hospital admissions in the last week may not yet be reported.

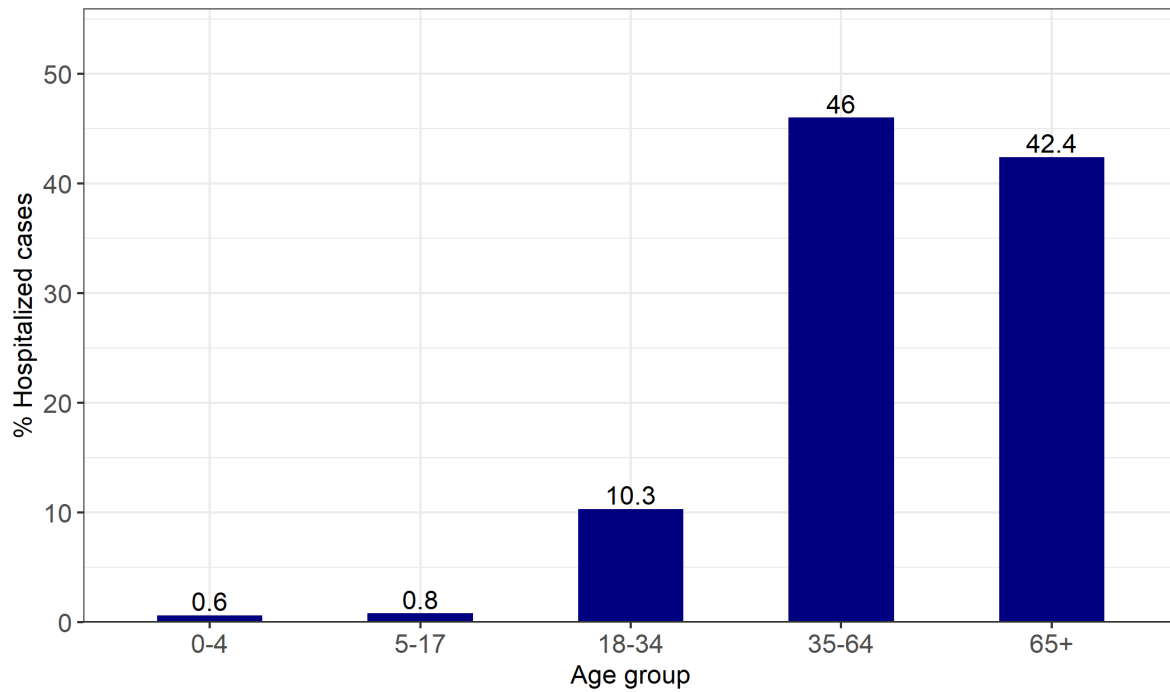
Percentage of new hospital admissions of out-of-state residents in New Mexico each week



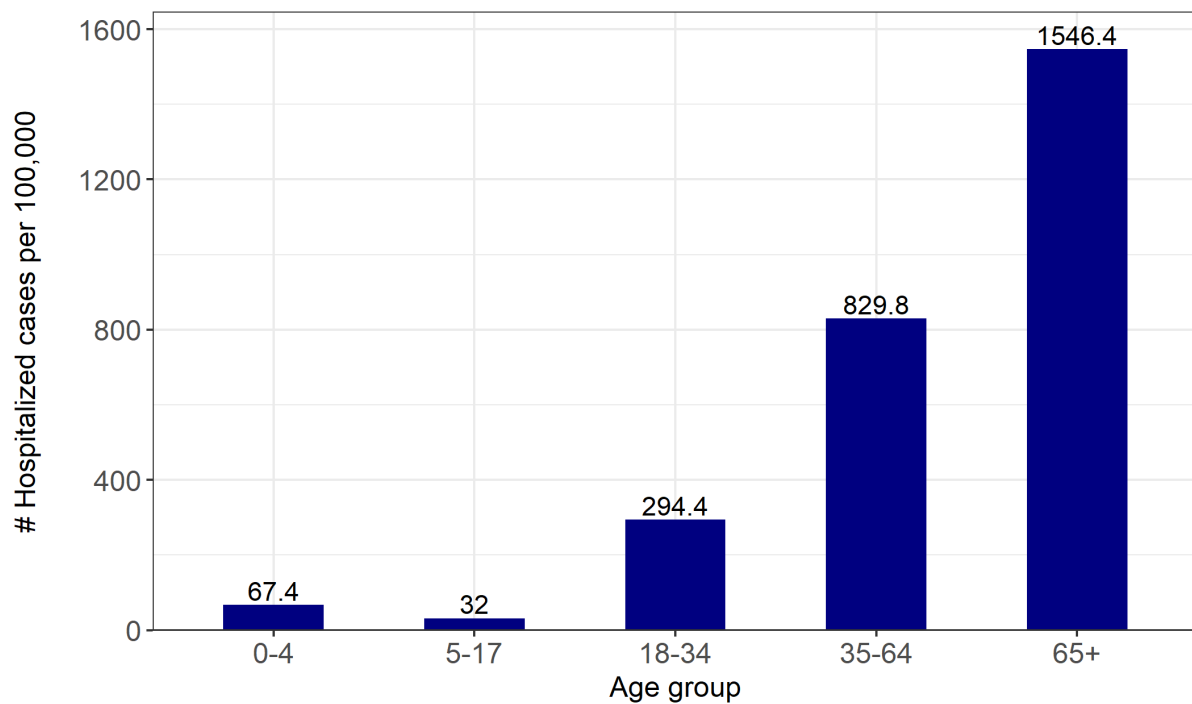
323 cases with missing hospital admission dates were excluded. Hospital admissions in the last week may not yet be reported. For each hospital admission week, the sum of the percentages for each age group is 100%.

## SECTION 3: AGE

Percentage of all hospitalized cases by age

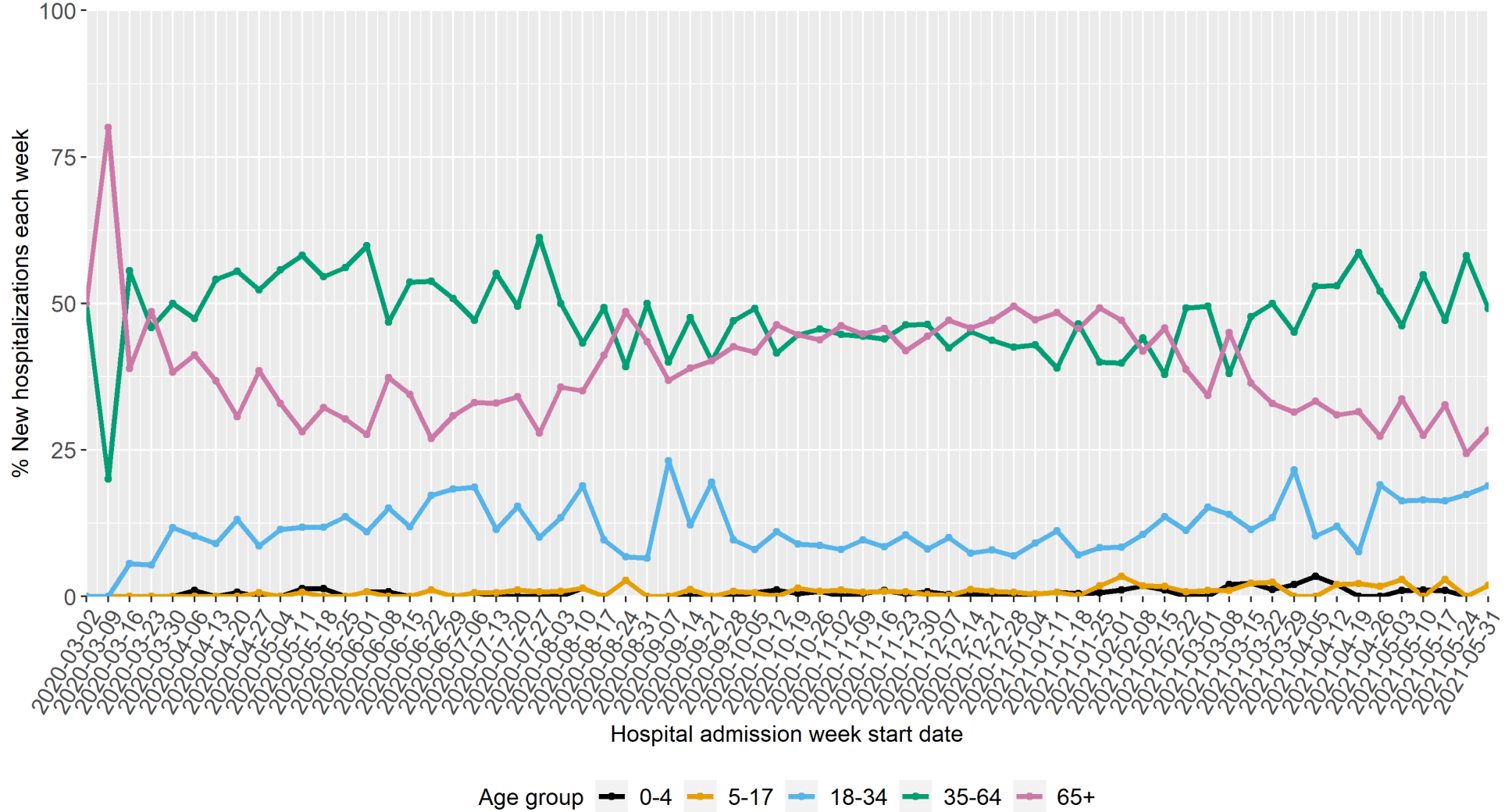


Cumulative hospitalization rate per 100,000 population by age





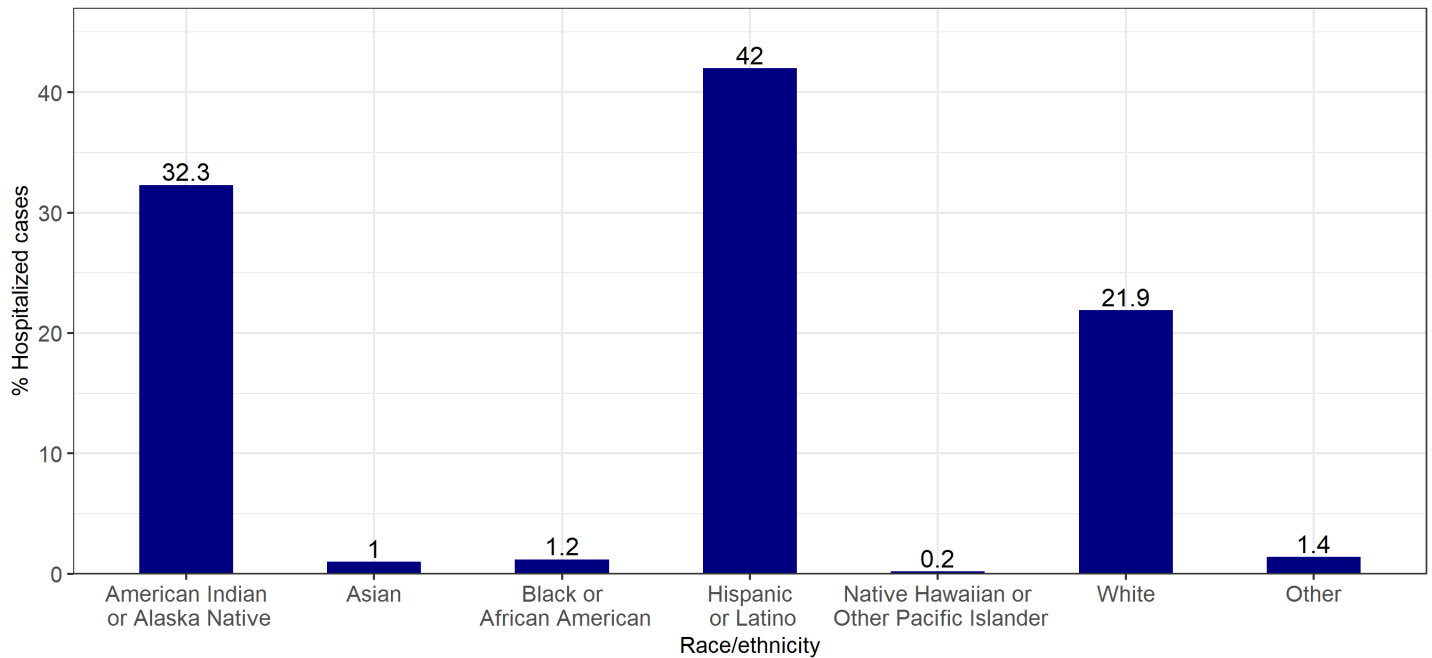
## Percentage of new hospital admissions each week by age



323 cases with missing hospital admission dates were excluded. Hospital admissions in the last week may not yet be reported. For each hospital admission week, the sum of the percentages for each age group is 100%.

## SECTION 4: RACE/ETHNICITY

### Percentage of all hospitalizations by race/ethnicity



659 hospitalized cases with missing race/ethnicity information were excluded. 24 cases who self-identified as “Refused to answer” and 0 who were “not asked” about race/ethnicity were also excluded.

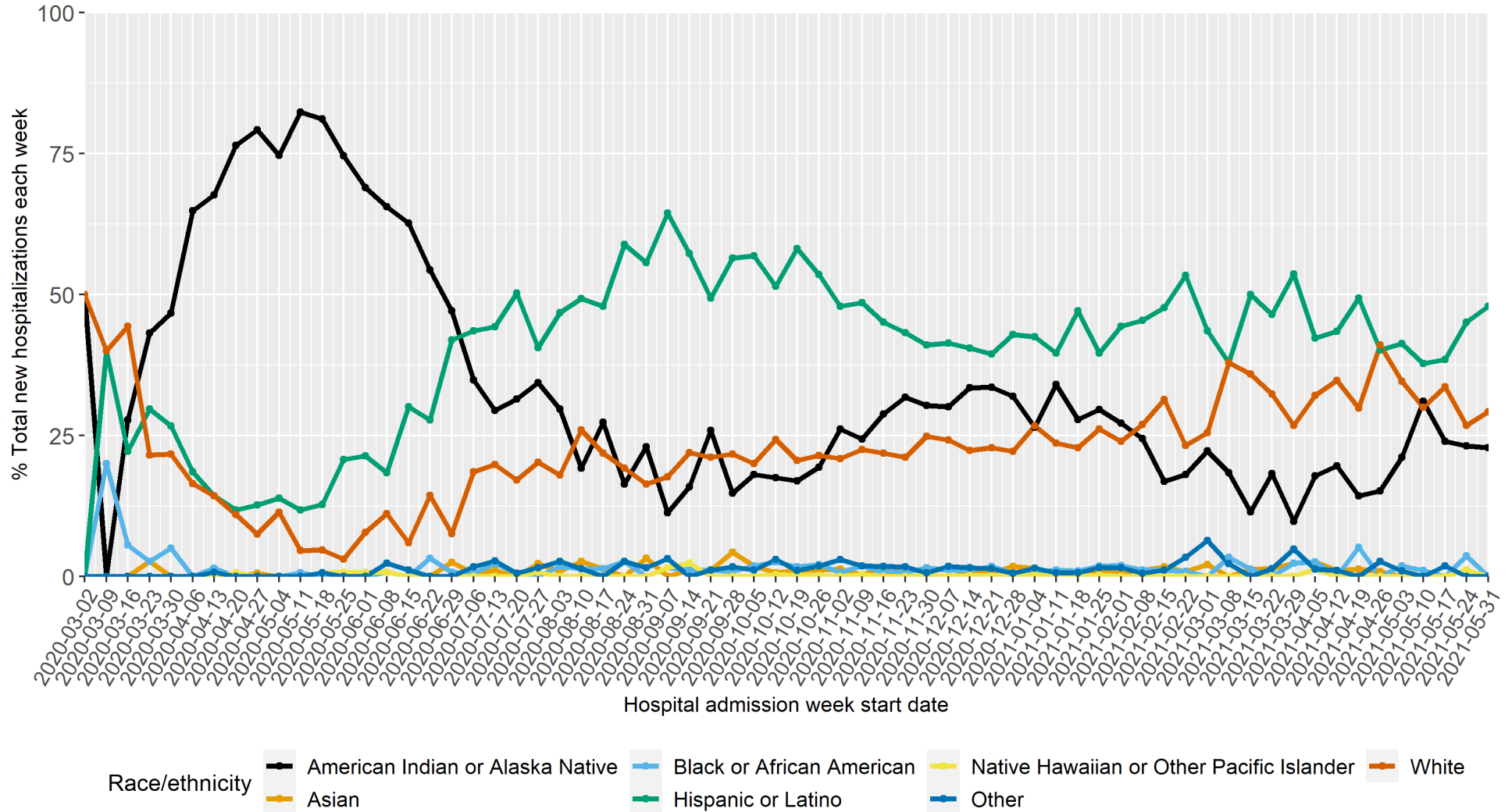
### Cumulative age-adjusted hospitalization rate per 100,000 population by race/ethnicity

Race/Ethnicity	Hospitalization rate per 100,000
American Indian or Alaska Native	2,348.5
Asian or Pacific Islander	369.1
Black of African American	365.5
Hispanic or Latino	556.2
White	240.8

659 hospitalized cases with missing race/ethnicity information were excluded. 204 cases who self-identified as Other Race, “Refused to answer”, or “not asked” were also excluded.

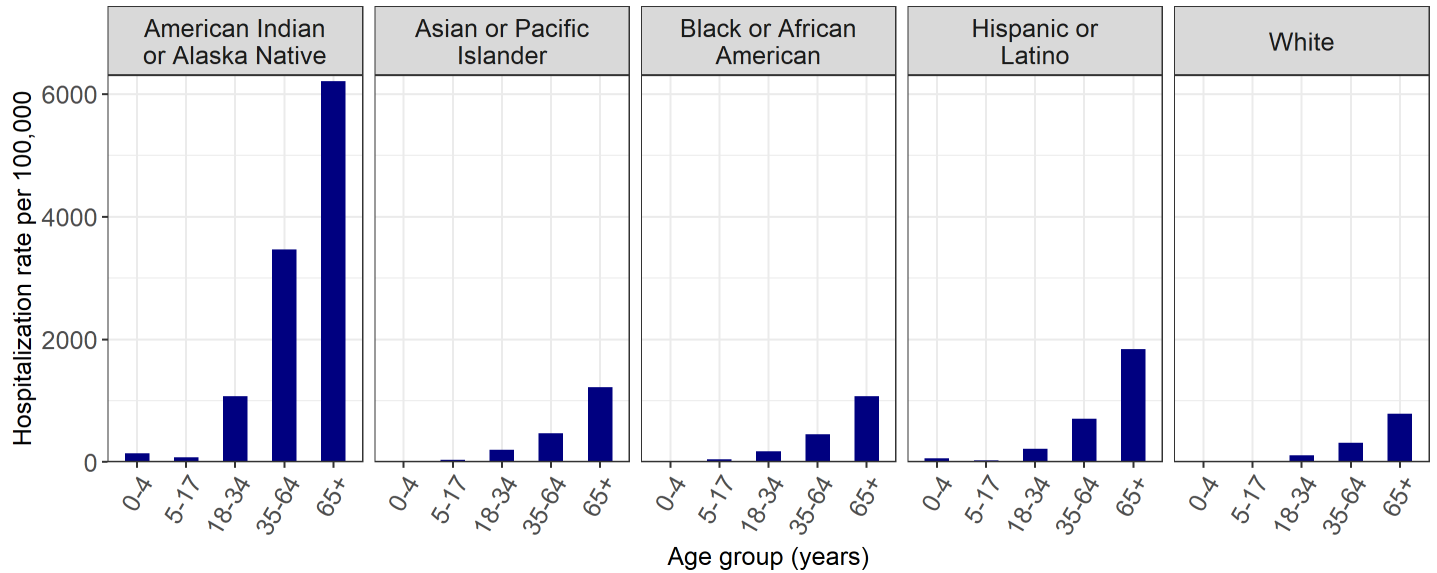
Due to the small numbers of hospitalizations and lower population sizes of Asian or Pacific Islanders and Black or African Americans in New Mexico, the hospitalization rate per 100,000 population for these two groups are currently considered unreliable and should be interpreted with caution.

## Percentage of new hospital admissions each week by race/ethnicity

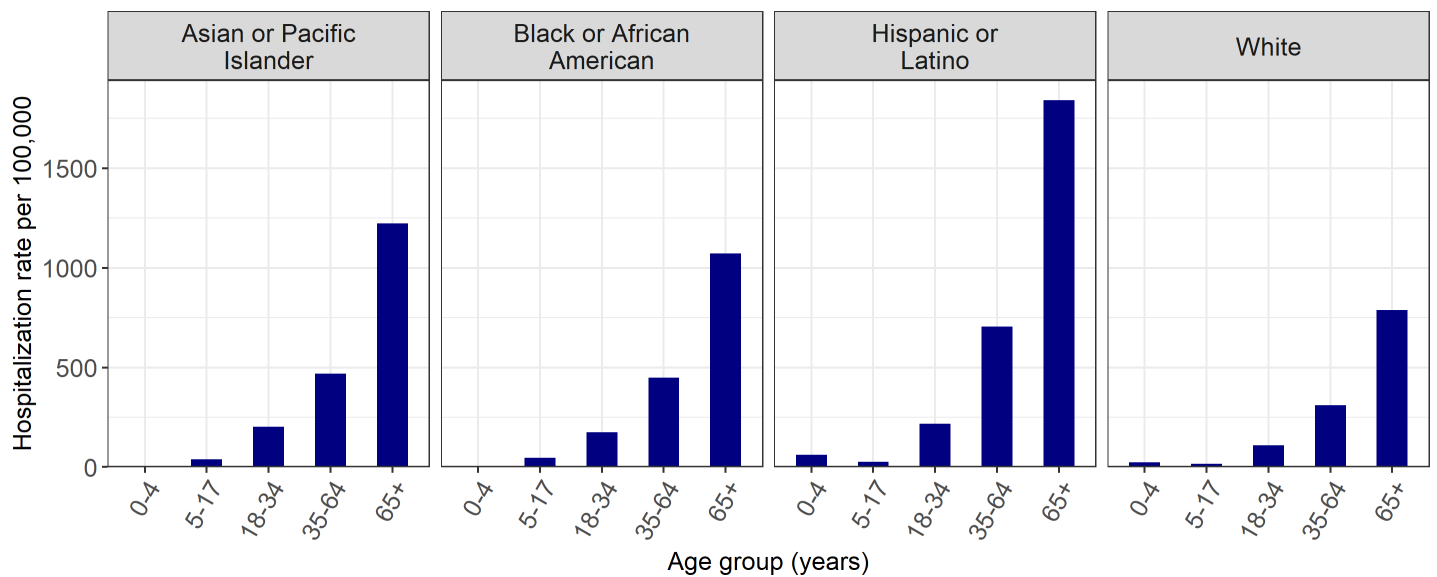


1,006 cases with missing race/ethnicity (including "Refused to answer" and "not asked") or hospital admission date information were excluded. Hospital admissions in the last week may not yet be reported. For each hospital admission week, the sum of the percentages for each race/ethnicity group is 100%.

### Cumulative hospitalization rate per 100,000 population by race/ethnicity and age



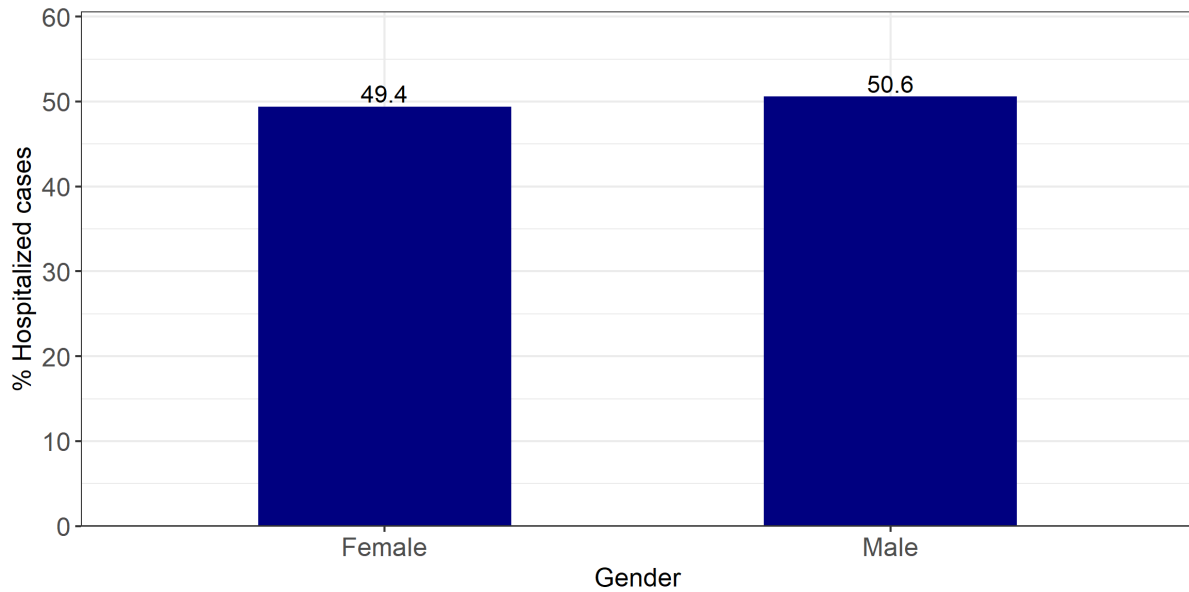
The following figure excludes American Indian or Alaska Native to illustrate in more detail the hospitalization rate per 100,000 population of the other race and ethnicity groups.



659 hospitalized cases with missing race/ethnicity information were excluded. 204 cases who self-identified as Other Race, "Refused to answer", or "not asked" were also excluded.

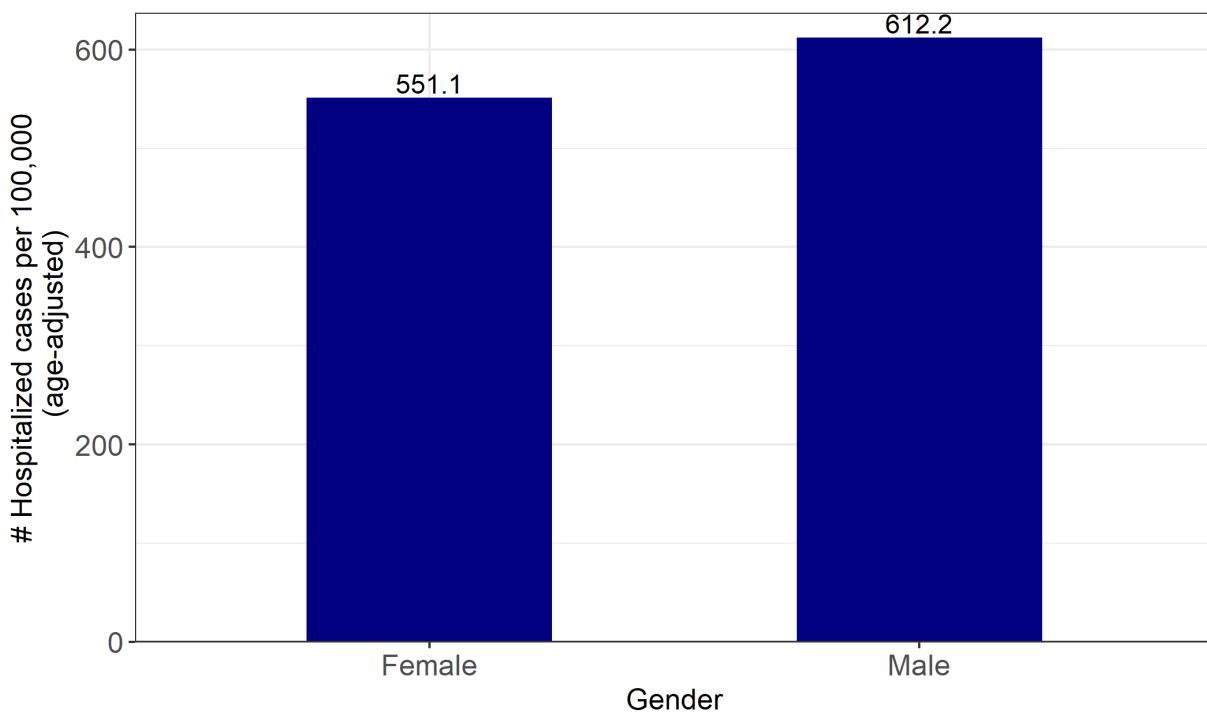
## SECTION 5: GENDER

Percentage of all hospitalizations by gender



75 hospitalized cases with unknown or missing gender information were excluded.

Cumulative age-adjusted hospitalization rate per 100,000 population by gender

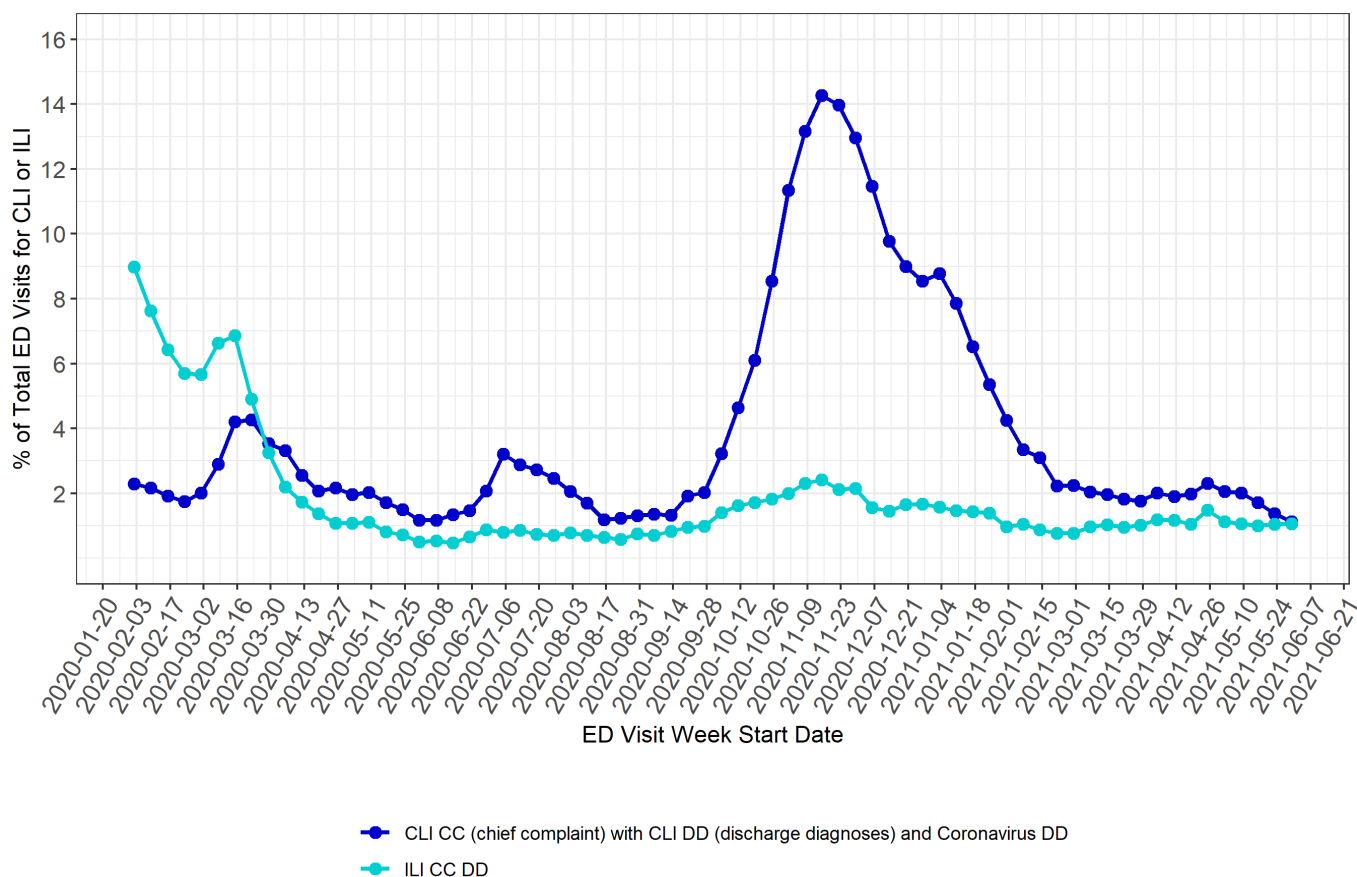


74 hospitalized cases with unknown or missing gender information were excluded.

## SECTION 6: CORONAVIRUS-LIKE ILLNESS (CLI) AND INFLUENZA-LIKE ILLNESS (ILI) RELATED VISITS IN EMERGENCY DEPARTMENTS

These visualizations are populated from data in New Mexico's Syndromic Surveillance Database. Initial patient encounter information is usually received within 24 hours, but clinical documentation is continuously being updated as it is identified throughout the patient encounter and hospital coding process.

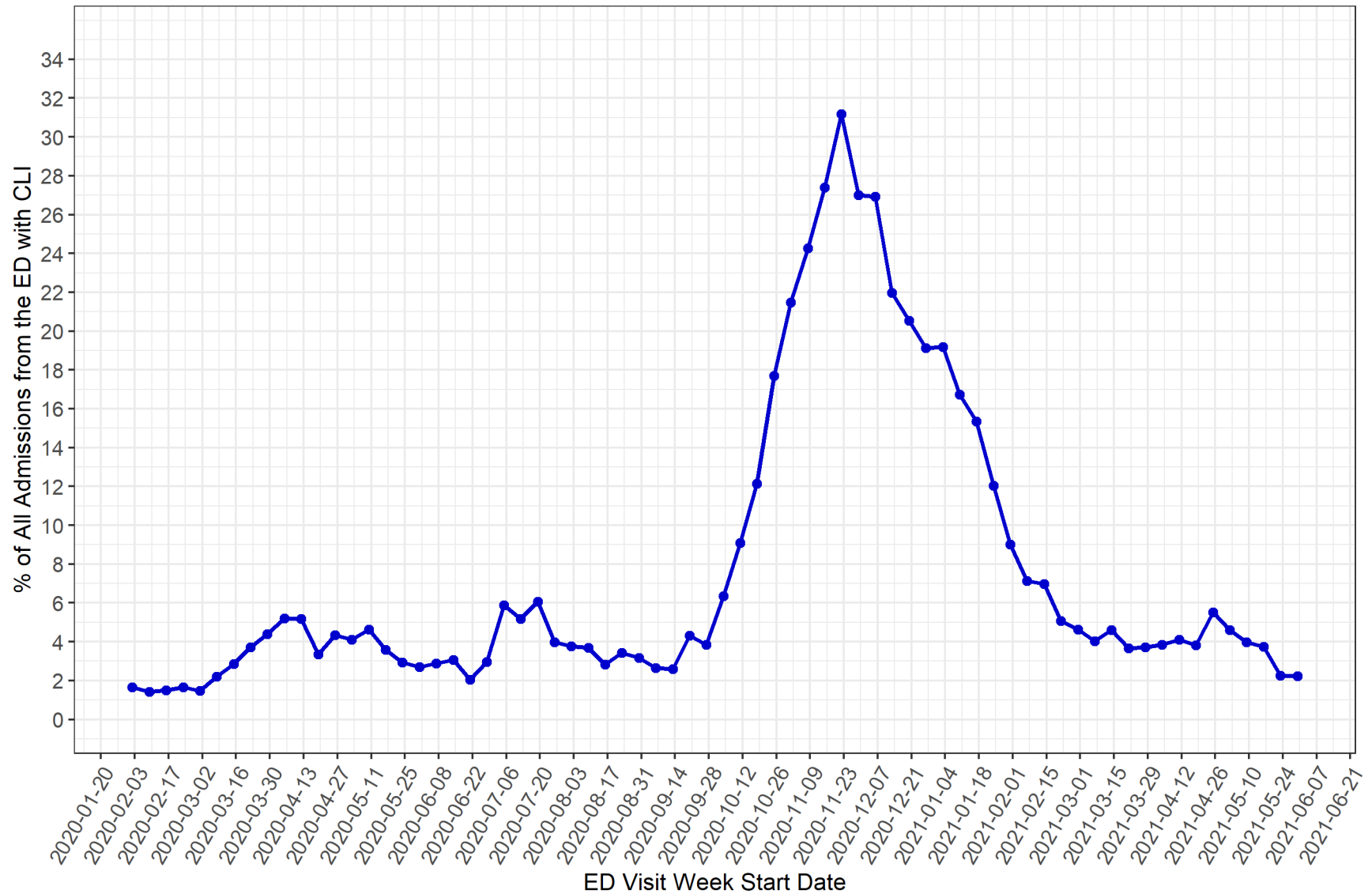
### Percentage of all emergency department (ED) visits that were Coronavirus-like illness (CLI) and Influenza-like illness (ILI) related



**CLI CC with CLI DD and Coronavirus DD** includes ED encounters with chief complaint consisting of fever and cough, shortness of breath, or difficulty breathing, while also including COVID-19 associated discharge diagnoses codes. The CLI definition excludes known influenza related ED visits coded with related influenza discharge diagnosis.

**ILI CCDD** includes ED encounters with chief complaint consisting of fever and cough, while also including ILI and influenza related discharge diagnoses.

## Percentage of all emergency department admissions (ED) that were Coronavirus-like illness (CLI) related



## Data Sources

- **COVID-19 data:** New Mexico Electronic Disease Surveillance System (NM-EDSS), Infectious Disease Epidemiology Bureau, Epidemiology and Response Division, New Mexico Department of Health.
- **Population Estimates:** University of New Mexico, Geospatial and Population Studies (GPS) Program.
- **Age-adjustment:** US 2000 Standard Population Weights
- **Coronavirus-like illness (CLI) and Influenza-like illness (ILI) related emergency department visits and admissions:** New Mexico's Syndromic Surveillance Database.

## Data Notes

- **The data reported in this weekly update may not match the daily numbers that are reported in the New Mexico Department of Health (NMDOH) press releases and/or the NMDOH COVID-19 data dashboard. This may be due to variation in the date and time of data extraction from NM-EDSS, corrections after quality assurance review, and differences in the exclusion criteria.**
- **New Mexico Electronic Disease Surveillance System (NM-EDSS).** Disease incidence data are derived from reports of notifiable infectious diseases. NMDOH relies on health care providers, laboratories, hospitals, clinics, institutions and individuals to report suspected and confirmed notifiable infectious diseases in accordance with New Mexico Administrative Code 7.4.3.13. Under-reporting can occur due to lack of awareness about reporting requirements or lack of compliance with those requirements. Not all cases of infectious diseases can be detected for various reasons including lack of access to health care services, lack of laboratory testing or concerns about confidentiality. Specific and standardized national case definitions are used to classify disease reports by case status.
- **New Mexico Population Estimates.** All population estimates apply to July 1 of 2019. Estimates include decimal fractions. The sum of population subgroup estimates may not exactly equal the overall state population estimate due to rounding error. Population estimates for previous years are occasionally revised as new information becomes available. When publishing trend data, always be sure that your rates for earlier years match current rates on NM-IBIS that have been calculated with the most up-to-date population estimates.
- **Race/ethnicity.** Race and ethnicity are reported as a single variable, race/ethnicity, according to the selection of the case. Any case who is Hispanic is in the Hispanic category and all other races are non-Hispanic.
- **Gender** refers to a person's internal sense of being male, female, some combination of male and female, or neither male nor female. **Sex** refers to the biological anatomy of an individual's reproductive system, and secondary sex characteristics.
- **Hospitalization rate per 100,000 population.** A basic measure of disease-specific hospitalization frequency is a rate, which takes into account the number of hospitalizations and the population size. It is helpful in making public health decisions for a given population, relative to another population regardless of size.



- **Age-adjusted hospitalization rate per 100,000 population.** The age-distribution of a population (the number of people in particular age categories) can change over time and can be different in different geographic areas. The use of age-adjusted rates permits a valid comparison among populations. It ensures that the differences in hospitalizations from one population to another are not due to differences in the age distribution of the populations being compared.