

COVID-19 Pediatric Case Report

August 23, 2021

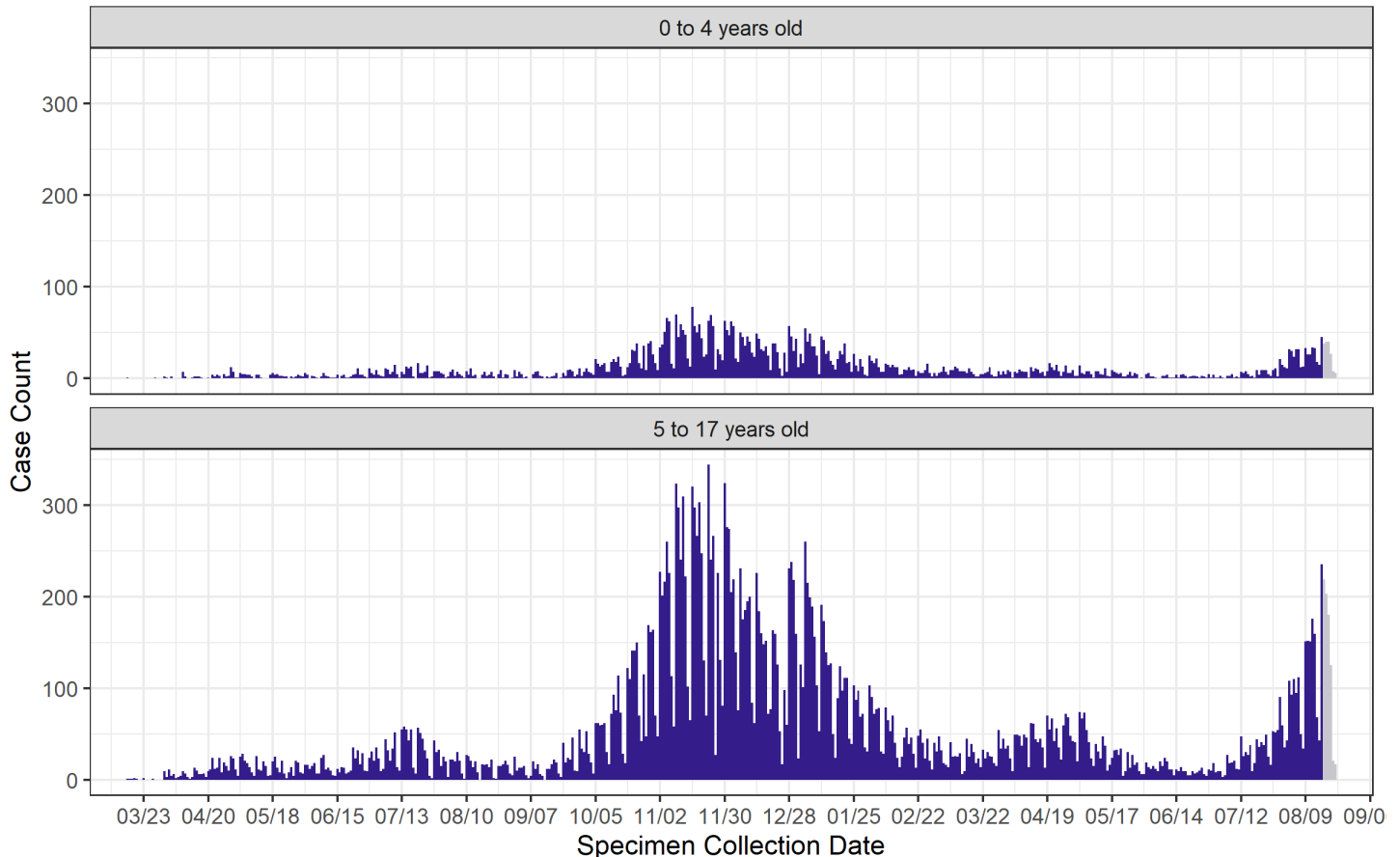
Unless stated otherwise, all data reported here exclude cases who are from out-of-state and cases who are detainees in Federal Immigration and Customs Enforcement (ICE) facilities.

Total number of pediatric cases (% of cases that are pediatric)	Number of pediatric cases in the last 7 days (% of cases in the last 7 days that are pediatric)
34,286 (15.2%)	1,399 (24.7%)

SECTION 1: PEDIATRIC CASE DEMOGRAPHICS

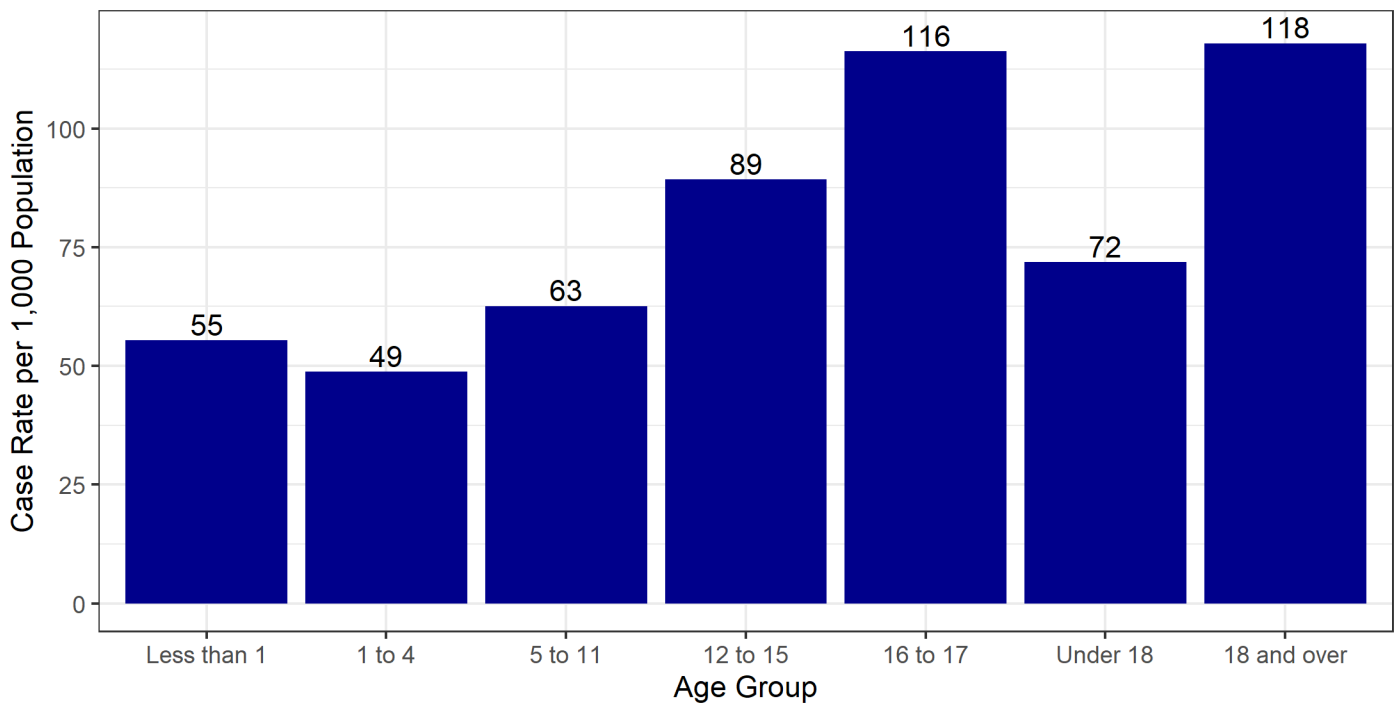
Pediatric case count over time

Pediatric Case Count over Time



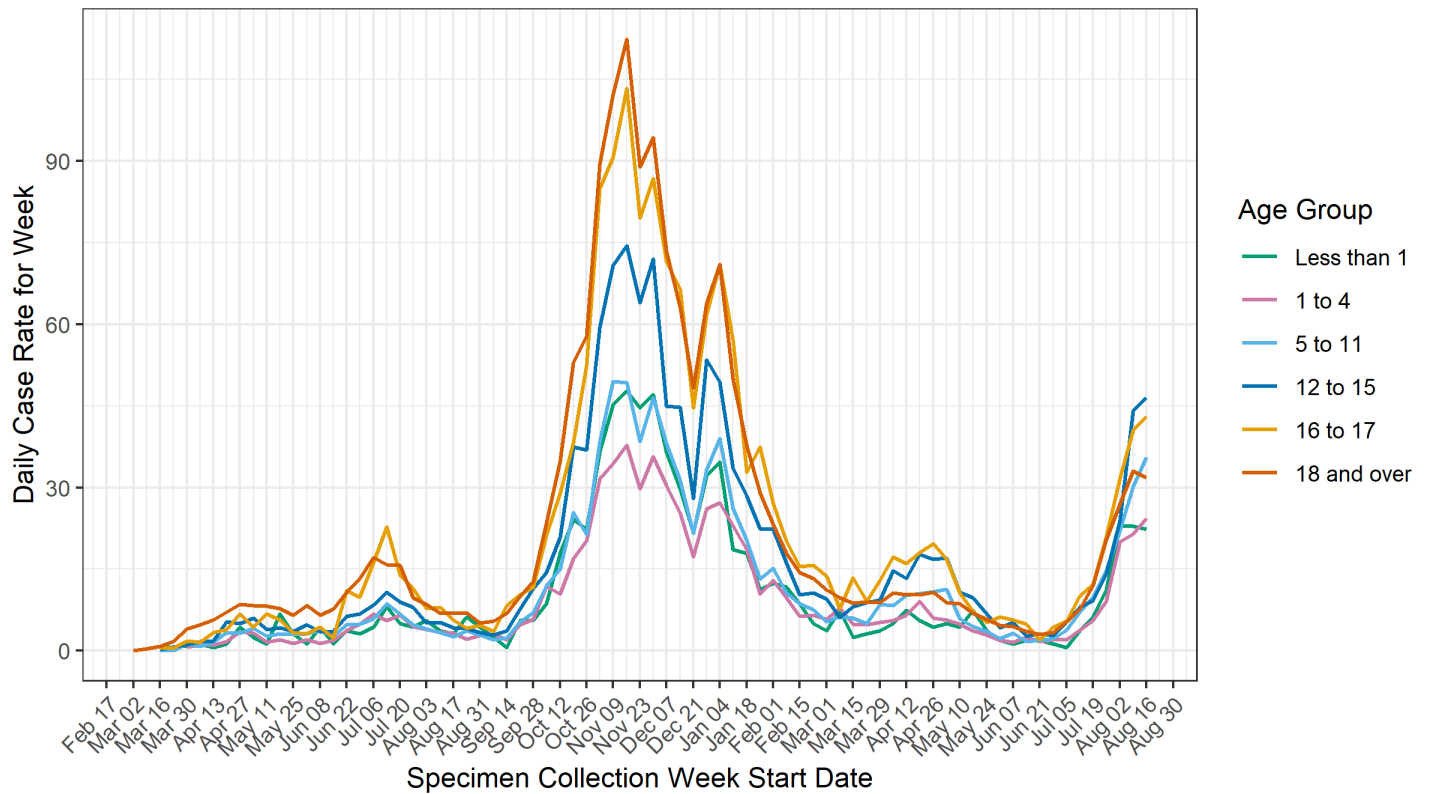
Previous 7 days are greyed out. Positive samples collected during this time may not yet be reported.

Pediatric case rate per 1,000 population by age group



Age Group	Number of Cases	Percent of Cases	Cases per 1,000	Ratio of 18 and Over to Age Group
Less than 1	1278	0.6	55.4	0.5
1 to 4	4808	2.1	48.8	0.4
5 to 11	11820	5.2	62.6	0.5
12 to 15	9950	4.4	89.2	0.8
16 to 17	6430	2.8	116.2	1.0
Under 18	34286	15.2	71.8	0.6
18 and over	191635	84.8	117.9	1.0

Daily pediatric case rate per 100,000 population by age group

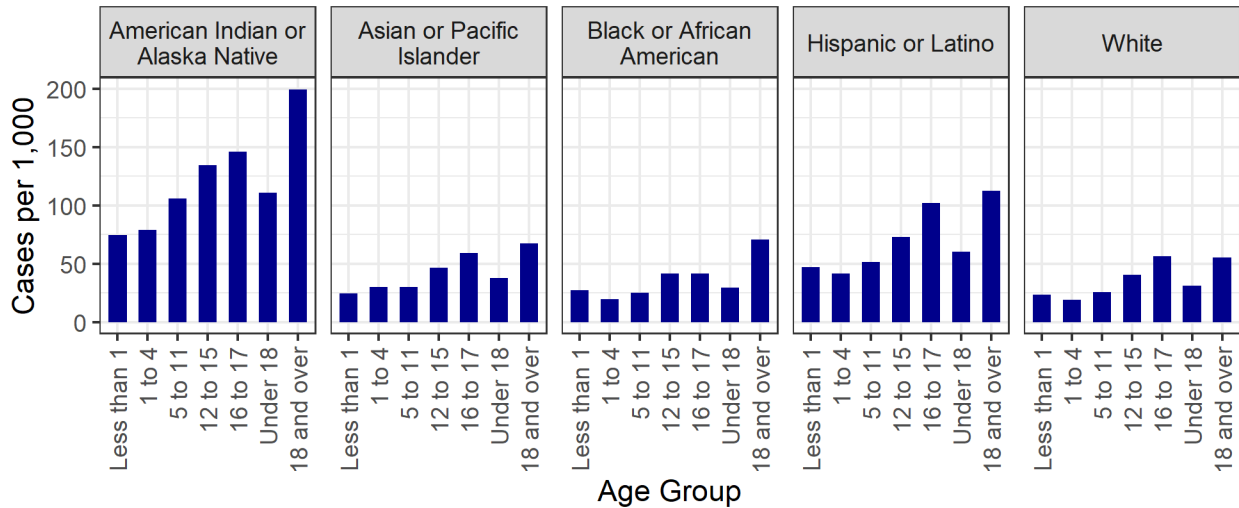


Tests collected in the last ten days may not yet have results. Recent case rates will change as these tests are processed.

Pediatric cases by sex and age

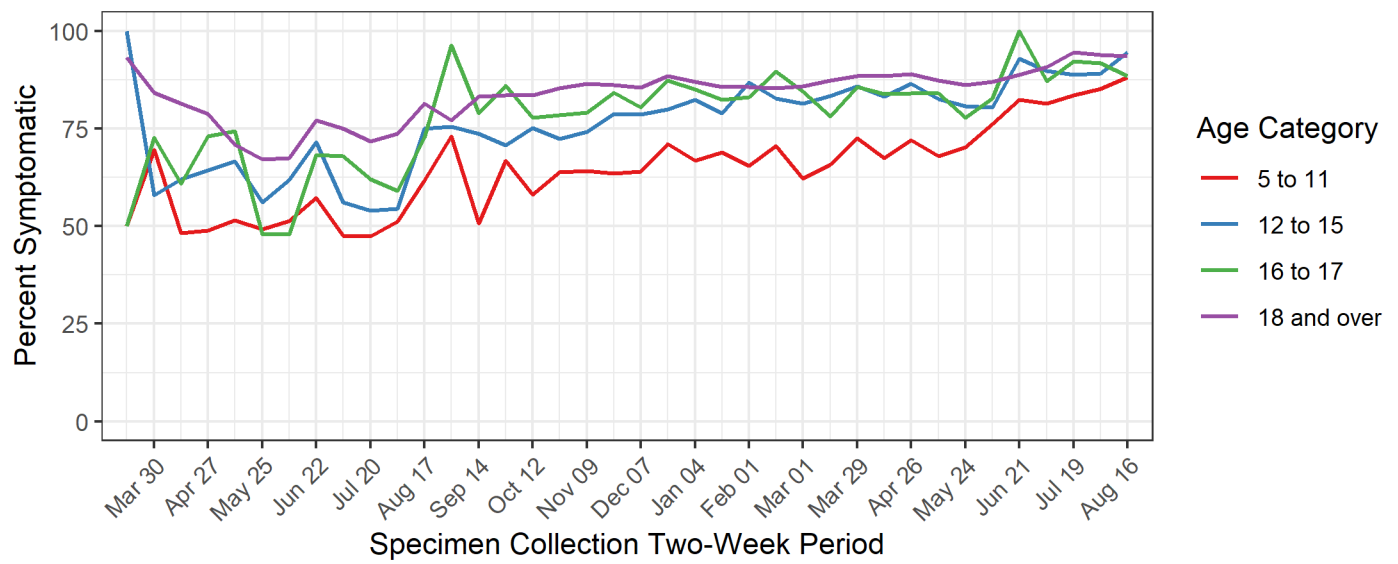
Sex	Age Group	Cases	Percent of Cases within Gender	Cases per 1,000 Population
Female	Less than 1	610	0.5%	54.1
	1 to 4	2323	2.0%	48.1
	5 to 11	5781	5.0%	62.5
	12 to 15	4968	4.3%	90.4
	16 to 17	3405	2.9%	125.2
	Under 18	17087	14.7%	72.9
	18 and over	98865	85.3%	119.4
Male	Less than 1	644	0.6%	54.6
	1 to 4	2423	2.3%	48.2
	5 to 11	5886	5.5%	61.1
	12 to 15	4862	4.6%	86.0
	16 to 17	2965	2.8%	105.5
	Under 18	16780	15.7%	69.0
	18 and over	89776	84.3%	112.6

Rates per 1,000 population of cases by age in each race/ethnicity group



Race	Age Group	Cases	Percent	Rate per 1,000
American Indian or Alaska Native	Less than 1	175	0.5%	74.4
	1 to 4	798	2.4%	79.1
	5 to 11	2168	6.5%	105.8
	12 to 15	1649	4.9%	134.3
	16 to 17	868	2.6%	146.1
	Under 18	5658	16.9%	110.6
	18 and over	27847	83.1%	199.4
Asian or Pacific Islander	Less than 1	8	0.3%	24.5
	1 to 4	41	1.8%	30.0
	5 to 11	77	3.4%	29.9
	12 to 15	75	3.3%	46.7
	16 to 17	51	2.2%	59.3
	Under 18	252	11.0%	37.4
	18 and over	2046	89.0%	67.6
Black or African American	Less than 1	17	0.6%	27.4
	1 to 4	50	1.7%	19.5
	5 to 11	124	4.3%	25.1
	12 to 15	107	3.7%	41.4
	16 to 17	50	1.7%	41.4
	Under 18	348	12.2%	29.2
	18 and over	2516	87.8%	70.4
Hispanic or Latino	Less than 1	648	0.6%	47.0
	1 to 4	2466	2.4%	41.4
	5 to 11	5855	5.8%	51.3
	12 to 15	4924	4.9%	73.0
	16 to 17	3380	3.3%	102.2
	Under 18	17273	17.1%	60.0
	18 and over	84018	82.9%	112.3
White	Less than 1	139	0.3%	23.2
	1 to 4	475	1.2%	19.0
	5 to 11	1200	2.9%	25.6
	12 to 15	1116	2.7%	40.5
	16 to 17	799	2.0%	56.1
	Under 18	3729	9.2%	31.2
	18 and over	37016	90.8%	55.1

Percent of school-aged pediatric cases with symptoms by age group



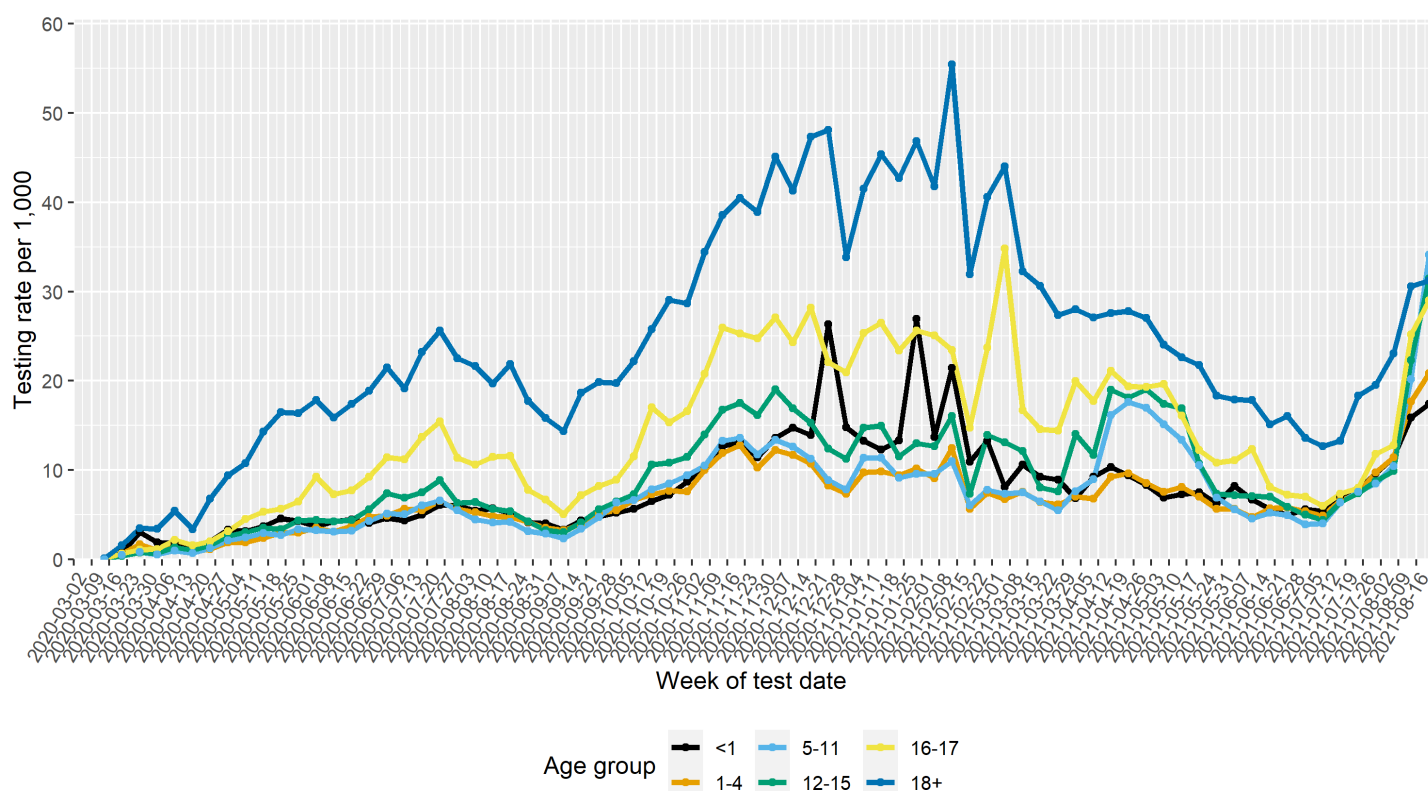
SECTION 2: PEDIATRIC TESTING RATES AND POSITIVITY

Cumulative testing rates per 1,000 population and test positivity by age group

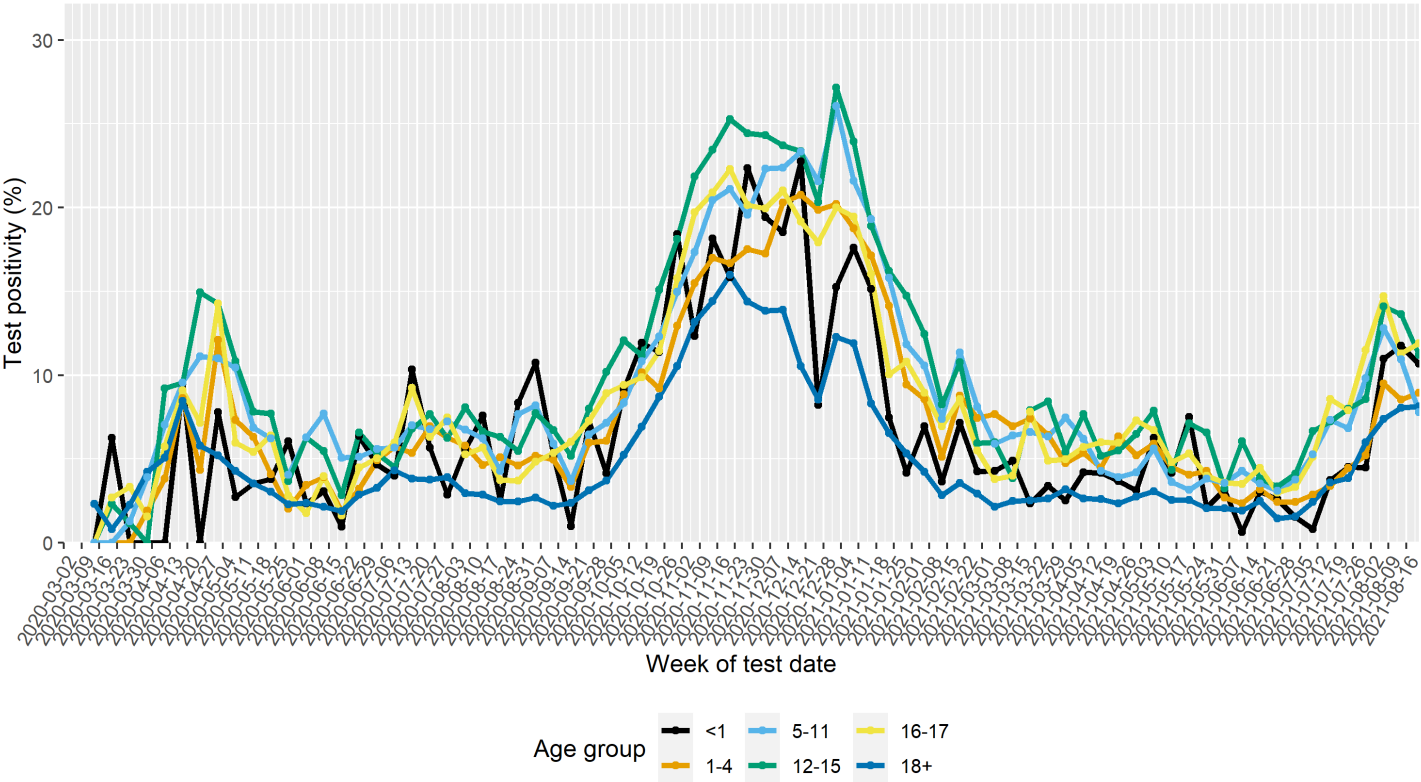
Tests include PCR and antigen

Age Group (years)	Total Number of Cases	Cumulative tests per 1,000 population	Cumulative test positivity (%)
<1	1276	613.2	8.3%
1-4	4843	503.8	9.0%
5-11	11922	563.7	10.4%
12-15	10020	704.9	11.9%
16-17	6456	1059.0	10.3%
18+	191603	1850.7	5.9%

Testing rates per 1,000 population by age group by week



Test positivity (%) by age group by week



SECTION 3: PEDIATRIC HOSPITALIZATIONS

Out-of-state pediatric cases were excluded.

Total pediatric hospitalizations	Pediatric hospitalizations in the last week	Total Pediatric deaths
265	3	4

Hospitalization rate per 100,000 population and percentage by age group

It should be noted that due to the small number of hospitalizations of pediatric cases, the hospitalization rates per 100,000 population for these age groups should be interpreted with caution.

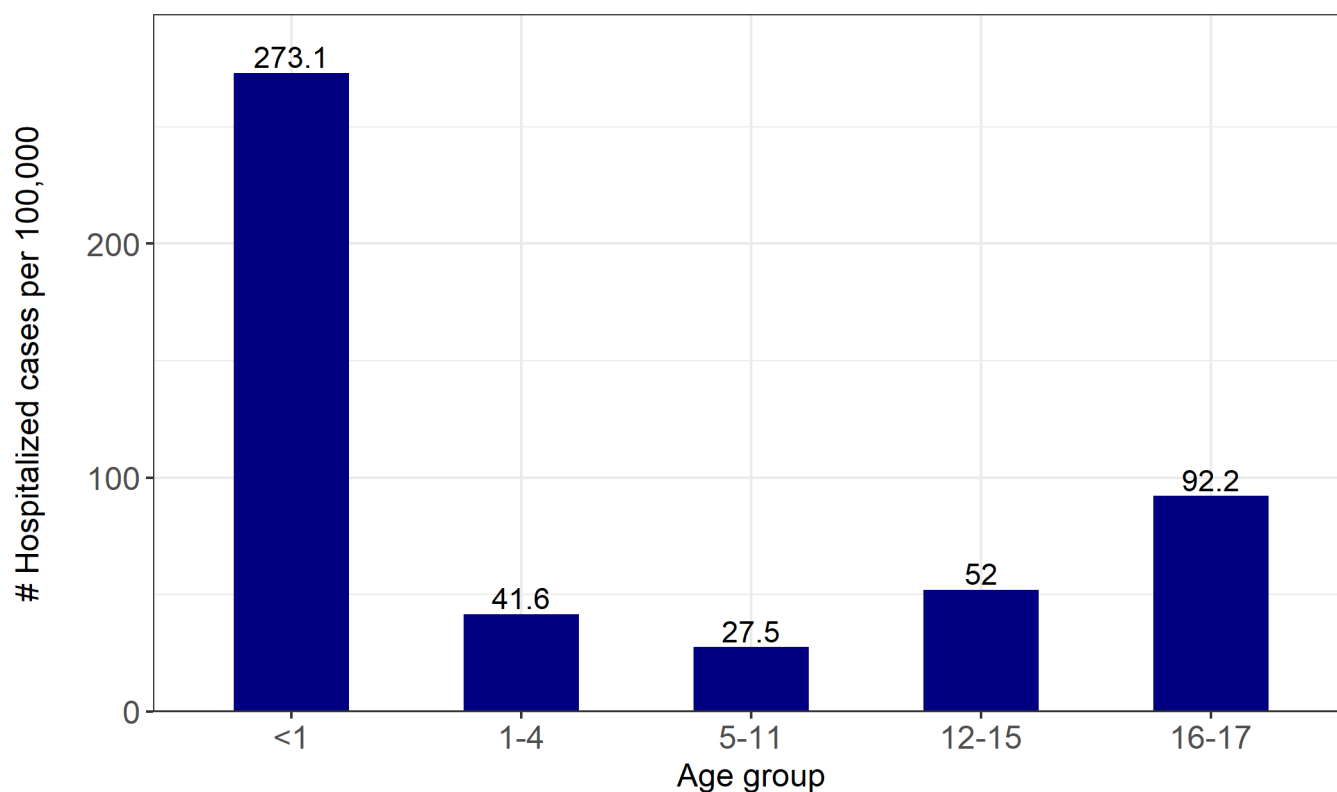


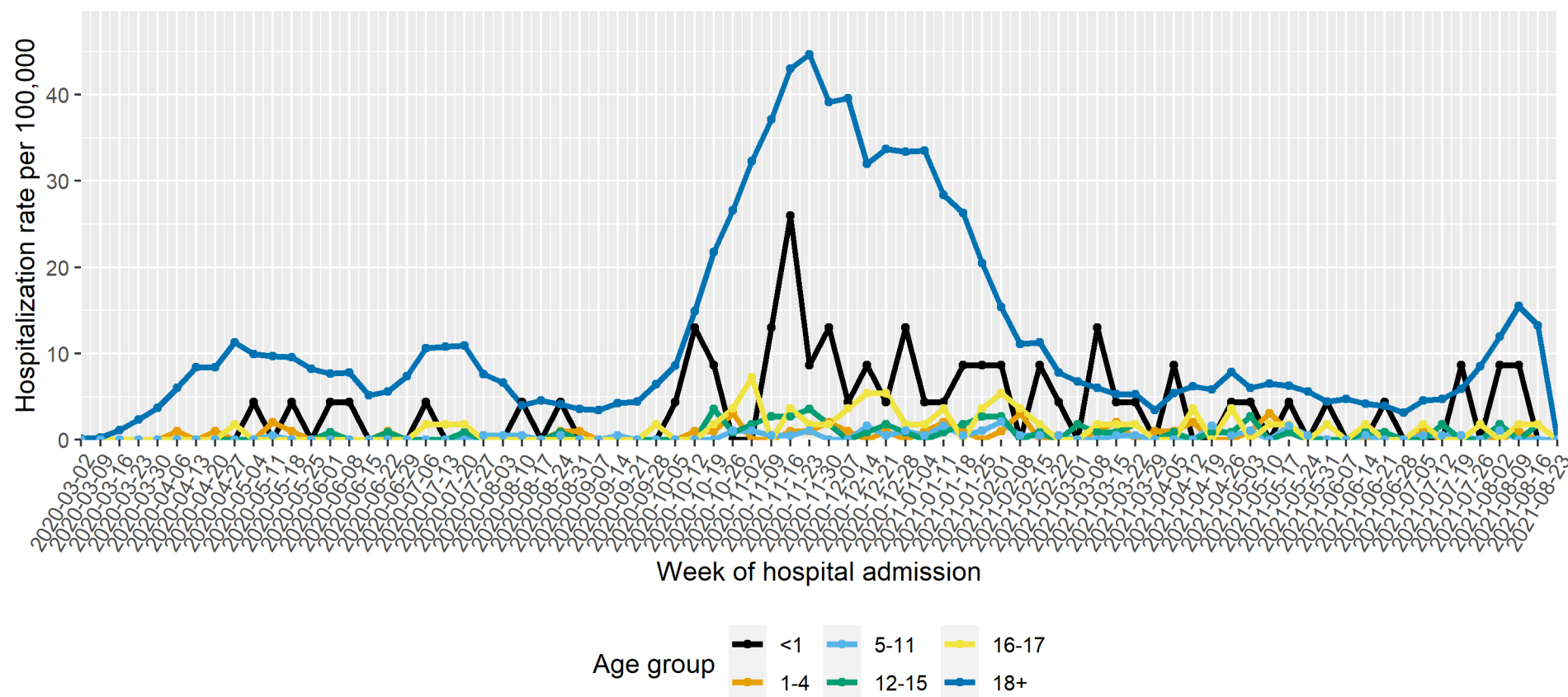
Table 1. Number of hospitalizations, percent of hospitalizations and rate of hospitalization per 100,000 for cases under 18 years old

Age group (years)	Number of hospitalizations	Percent of hospitalizations Under 18 years old	Hospitalization rate per 100,000 population
<1	63	23.8%	273.1
1-4	41	15.5%	41.6
5-11	52	19.6%	27.5
12-15	58	21.9%	52.0
16-17	51	19.2%	92.2

Table 2. Number of hospitalizations, percent of hospitalizations and rate of hospitalization per 100,000 for cases under 18 years old compared to 18 years and over

Age group (years)	Number of hospitalizations	Percent of hospitalizations Under 18 years old	Hospitalization rate per 100,000 population
Under 18	265	1.7%	55.5
18+	14901	98.3%	916.8

Hospitalizations per 100,000 population by age each week

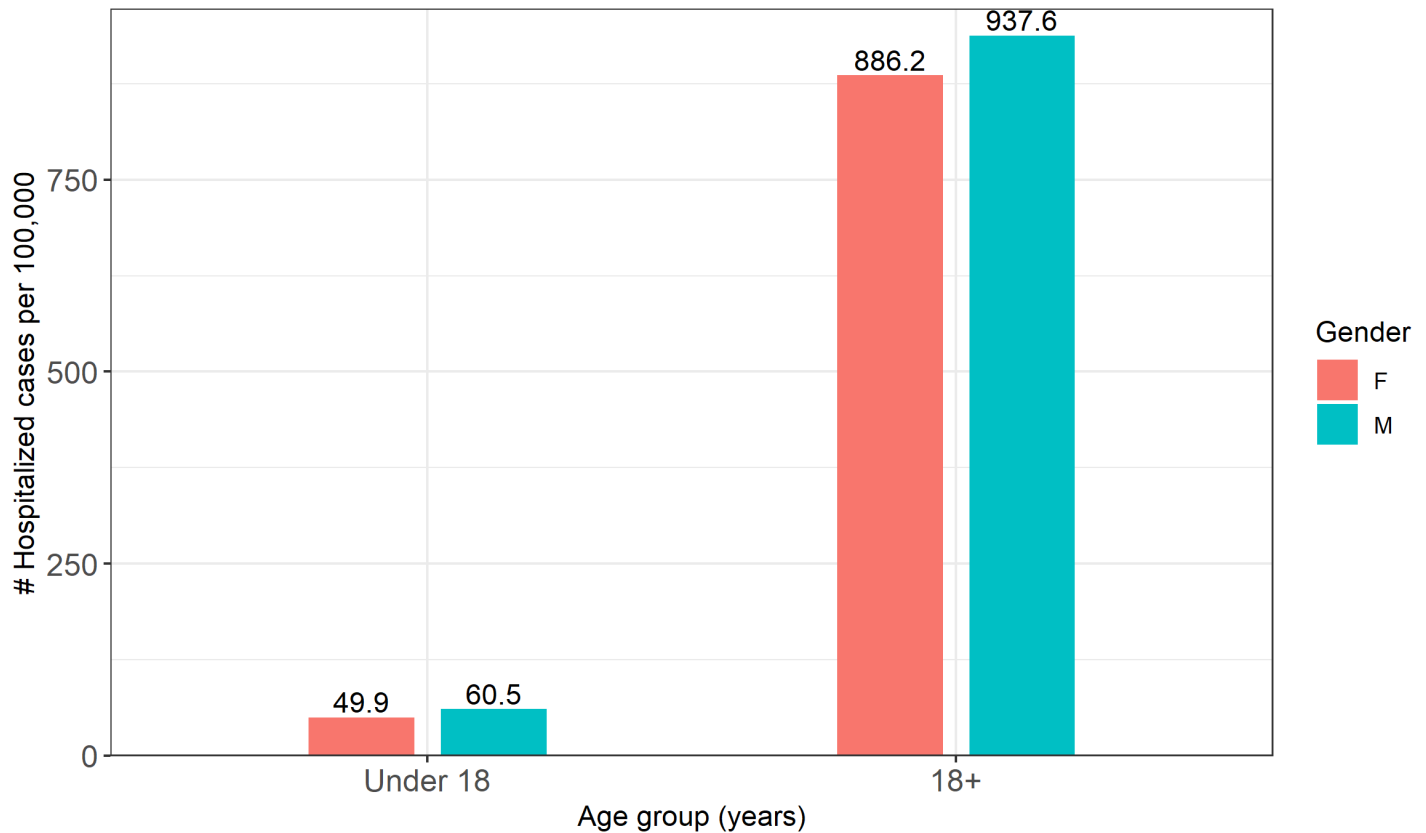


Finding: Overall, the hospitalization rates per 100,000 population among the pediatric age groups have remained low. However, since the end of September 2020, hospitalization rates in the less than 1 year old age group have been higher than the 1-4, 12-15, and 16-17 years old age groups. It should be noted that due to the small number of hospitalizations of pediatric cases, the hospitalization rates per 100,000 population for these age groups should be interpreted with caution.

Note: Hospitalizations in the previous week may not yet be reported.

Hospitalization rate per 100,000 population and percentage by sex

Finding: The hospitalization rate per 100,000 population is similar between males and females within the Under 18 and over 18 years age groups. It should be noted that due to the small number of hospitalizations of pediatric cases, the hospitalization rates per 100,000 population for these age groups should be interpreted with caution.

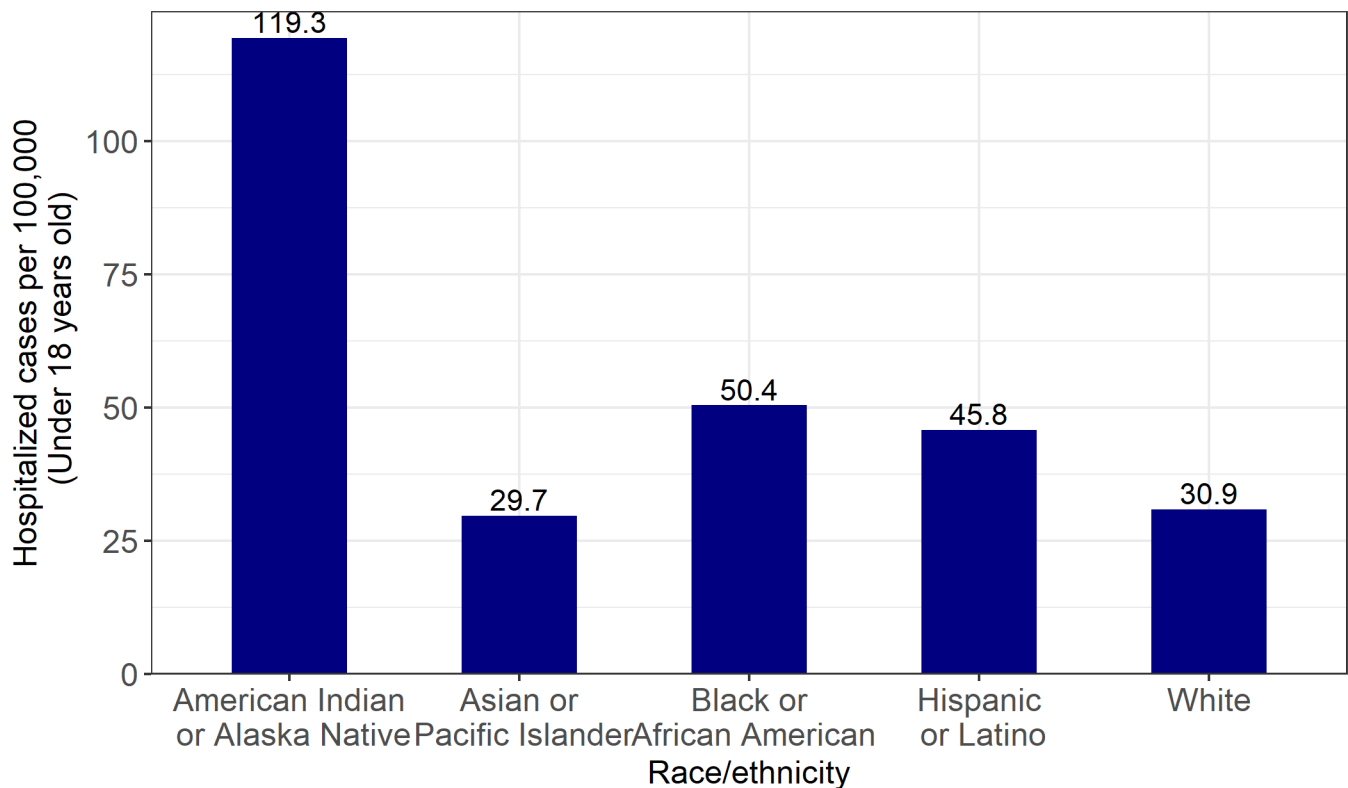


Age group (years)	Sex	Number of hospitalizations	Percent of hospitalizations within age group	Hospitalization rate per 100,000
Under 18	Female	117	44.3%	49.9
	Male	147	55.7%	60.5
18+	Female	7336	49.5%	886.2
	Male	7477	50.5%	937.6

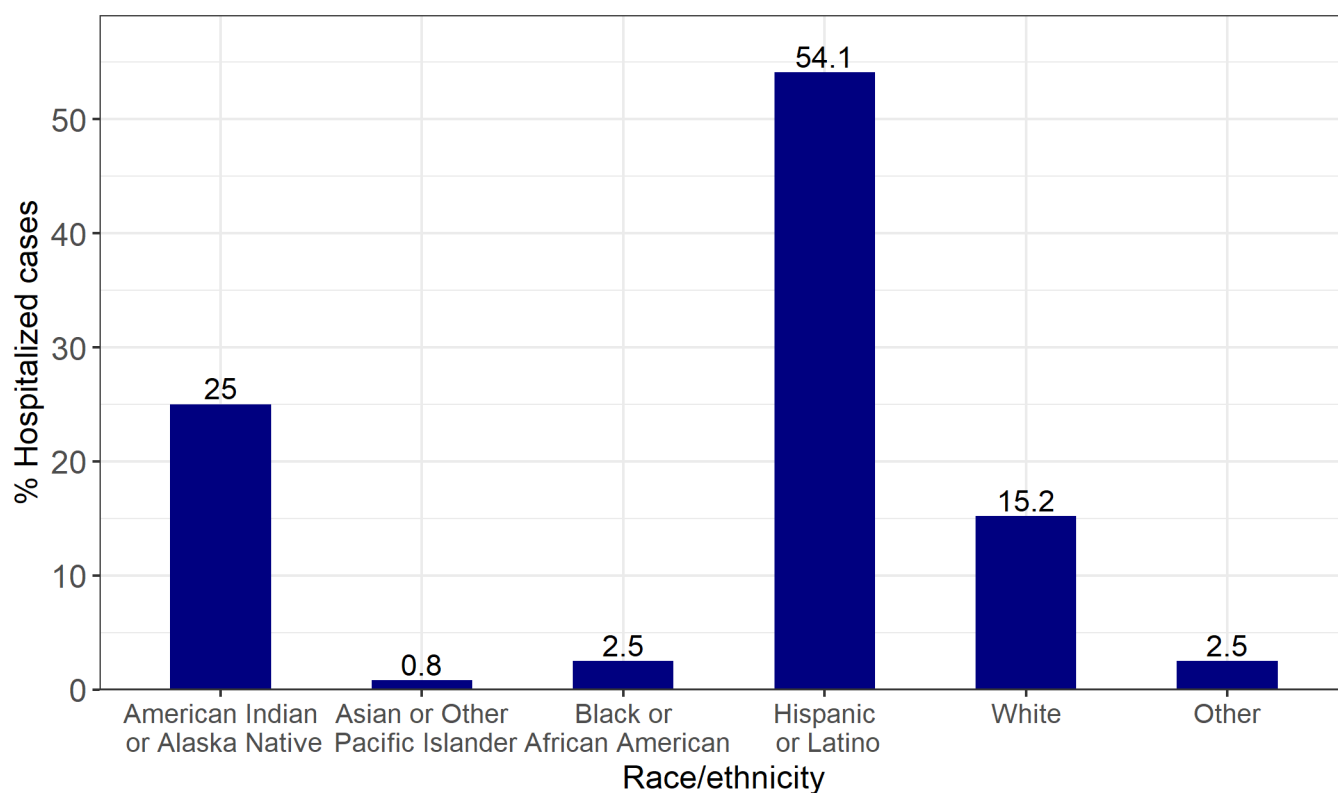
Note: 157 cases were excluded due to missing or unknown sex information.

Hospitalization rate per 100,000 population and percentage by race/ethnicity

Finding: In the Under 18 years old age group, the hospitalization rate per 100,000 population is the highest in American Indian or Alaska Native children at 199.3 followed by Black or African American at 50.4. However, Hispanic or Latino children make up 54.1% of the total number of pediatric cases hospitalized, followed by American Indian or Alaska Native children, at 25.0%. It should be noted that due to the small number of hospitalizations of pediatric cases, the hospitalization rates per 100,000 population for these age groups should be interpreted with caution.



Note: For Under 18 years age group, 18 cases had missing race/ethnicity information and were excluded. 9 cases "Refused to answer" or answered "Other" and were also excluded.



Age group (years)	Race/ethnicity	Number of hospitalizations	Percent of hospitalizations within age group	Hospitalization rate per 100,000 population
Under 18	American Indian or Alaska Native	61	25.0%	119.3
	Asian	2	0.8%	29.7
	Black or African American	6	2.5%	50.4
	Hispanic or Latino	132	54.1%	45.8
	White	37	15.2%	30.9
18+	American Indian or Alaska Native	4430	31.3%	3172.3
	Asian	161	1.1%	531.6
	Black or African American	179	1.3%	501.0
	Hispanic or Latino	5859	41.5%	783.5
	White	3292	23.3%	490.0

Notes:

- For Under 18 years age group, 18 cases had missing race/ethnicity information and were excluded. 9 cases “Refused to answer” or answered “Other” and were also excluded.
- For the “18+” years age group, 740 had missing race/ethnicity information and were excluded. 240 cases “Refused to answer” or answered “Other” and were also excluded.
- Rates for Native Hawaiian or Other Pacific Islanders and “Other” are excluded, as there are no population estimates for these populations.

Data Sources

- **COVID-19 data**
 - **New Mexico Electronic Disease Surveillance System (NM-EDSS)**, Infectious Disease Epidemiology Bureau, Epidemiology and Response Division, New Mexico Department of Health.
 - **Salesforce/MTX COVID-19 Case Investigation Platform.**
- **Population Estimates:** University of New Mexico, Geospatial and Population Studies (GPS) Program.

Data Notes

- **The data reported in this weekly update may not match the daily numbers that are reported in the New Mexico Department of Health (NMDOH) press releases and/or the NMDOH COVID-19 data dashboard. This may be due to variation in the date and time of data extraction from NM-EDSS, corrections after quality assurance review, and differences in the exclusion criteria.**
- **New Mexico Electronic Disease Surveillance System (NM-EDSS).** Disease incidence data are derived from reports of notifiable infectious diseases. NMDOH relies on health care providers, laboratories, hospitals, clinics, institutions and individuals to report suspected and confirmed notifiable infectious diseases in accordance with New Mexico Administrative Code 7.4.3.13. Under-reporting can occur due to lack of awareness about reporting requirements or lack of compliance with those requirements. Not all cases of infectious diseases can be detected for various reasons including lack of access to health care services, lack of laboratory testing or concerns about confidentiality. Specific and standardized national case definitions are used to classify disease reports by case status.
- **New Mexico Population Estimates.** All population estimates apply to July 1 of 2019. Estimates include decimal fractions. The sum of population subgroup estimates may not exactly equal the overall state population estimate due to rounding error. Population estimates for previous years are occasionally revised as new information becomes available. When publishing trend data, always be sure that your rates for earlier years match current rates on NM-IBIS that have been calculated with the most up-to-date population estimates.
- **Race/Ethnicity.** Race/Ethnicity are reported as a single variable according to the selection of the case. Any case who is Hispanic is in the Hispanic category and all other races are non-Hispanic.
- **Gender** refers to a person's internal sense of being male, female, some combination of male and female, or neither male nor female. **Sex** refers to the biological anatomy of an individual's reproductive system, and secondary sex characteristics.
- **Case rate per 100,000 population.** A basic measure of disease-specific case frequency is a rate, which takes into account the number of cases and the population size. It is helpful in making public health decisions for a given population, relative to another population regardless of size.