

COVID-19 Vaccine Data

(as of 08/23/2021 NMSIIS & Tiberius)

Data is pulled from the New Mexico Statewide Immunization Information System (NMSIIS) and reflects data reported to date by NM COVID-19 vaccine providers and RTS

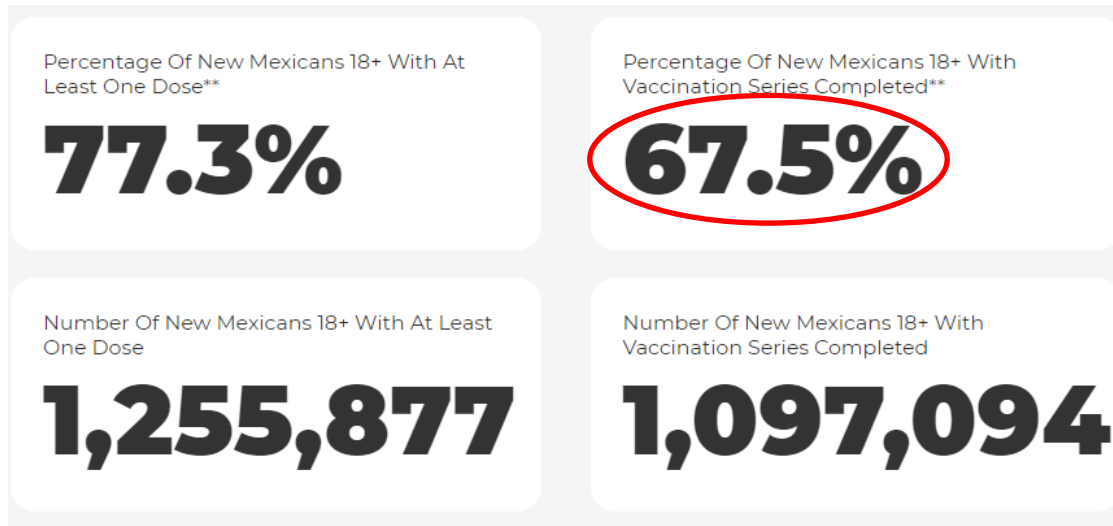
Vaccine Mission

Equitable distribution of the COVID19 Vaccine to decrease morbidity and mortality from COVID19 and preserve societal functioning

Vaccine Administration

To track doses administered for getting to goal of
80% vaccinated herd immunity

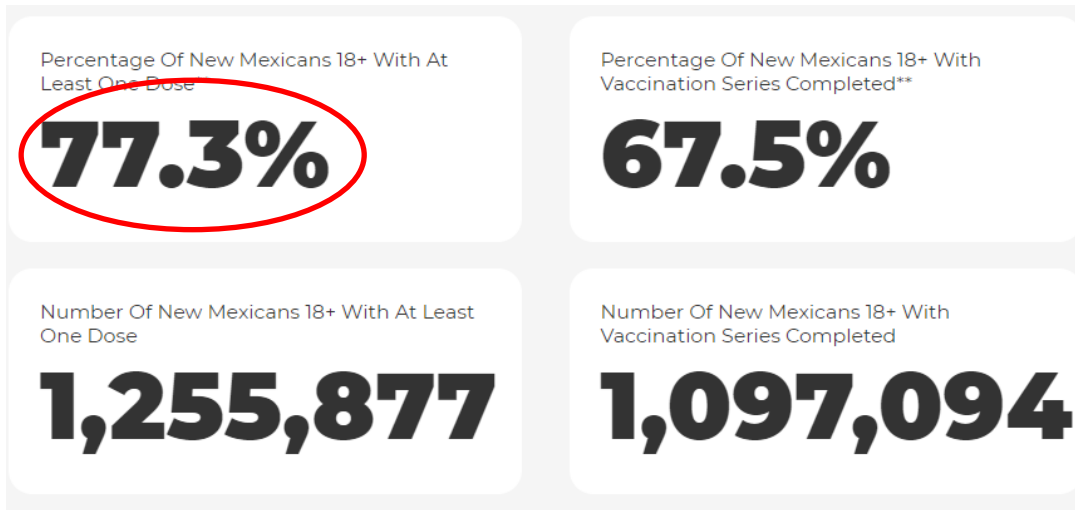
State-wide Progress for 18+ fully vax



Week ending:	Weekly relative increase
8/27	1.5 % ↑
8/20	0.8 % ↑
8/13	0.7 %
8/6	0.8% --
7/30	0.8% ↑
7/23	0.6%
7/16 (denominator change 7/8)	0.8%
7/2	2.9 % ↑
6/25	2.2 %
6/18	2.2 %

***Includes doses from the Indian Health Service, Veterans Administration, Department of Defense, Bureau of Prisons, and doses from other states administered to New Mexico residents

State-wide Progress for 18+ at least 1 dose



Week ending:	Weekly relative increase
8/27	1.6 % ↑
8/20	1.3% ↑
8/13	1.2 % ↑
8/6	1.1 % ↑
7/30	0.8 % ↑
7/23	0.5% ↑
7/16 (denominator change 7/8)	0.5% ↑

***Includes doses from the Indian Health Service, Veterans Administration, Department of Defense, Bureau of Prisons, and doses from other states administered to New Mexico residents

State-wide Progress for ages 12 - 17

Percentage Of New Mexicans
12-17 With At Least One Dose***

59.3%

Number of New Mexicans 12-17
With At Least One Dose***

98,906

Percentage of New Mexicans
12-17 With Vaccination Series
Completed***

46.8%

Number of New Mexicans 12-17
With Vaccination Series
Completed***

78,099

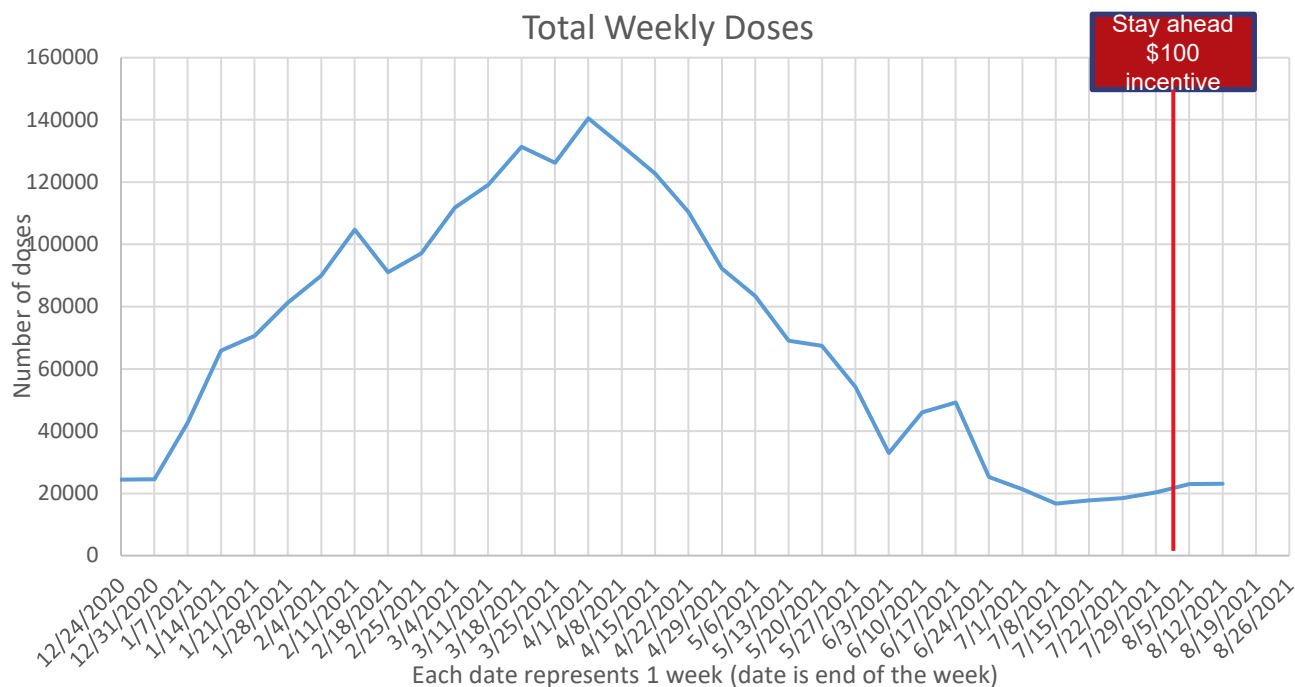
Week ending:	Weekly relative increase (at least 1 dose)	Weekly relative increase (fully vax)
8/27	↑ 4.1 %	↑ 5.8 %
8/20	3.7 %	↑ 4.3 %
8/13	5.1 %	↑ 4.2 %
8/6	-- 5.8 %	3.7%
7/30	↑ 5.8%	↑ 4.1%
7/23	↑ 4.1 %	↑ 4.1%
7/16	↑ 3.3%	↑ 4.8%

***Includes doses from the Indian Health Service, Veterans Administration, Department of Defense, Bureau of Prisons, and doses from other states administered to New Mexico residents

Note: denominator changed 7/8/21 to align with CDC. Now reporting ages 12 – 17 and 18+

Weekly COVID-19 vaccines administered in New Mexico since 12/14/20

(Includes NMSIIS and Federal data)



Vaccine Equity

To track equity on age, race, ethnicity and Social Vulnerability Index

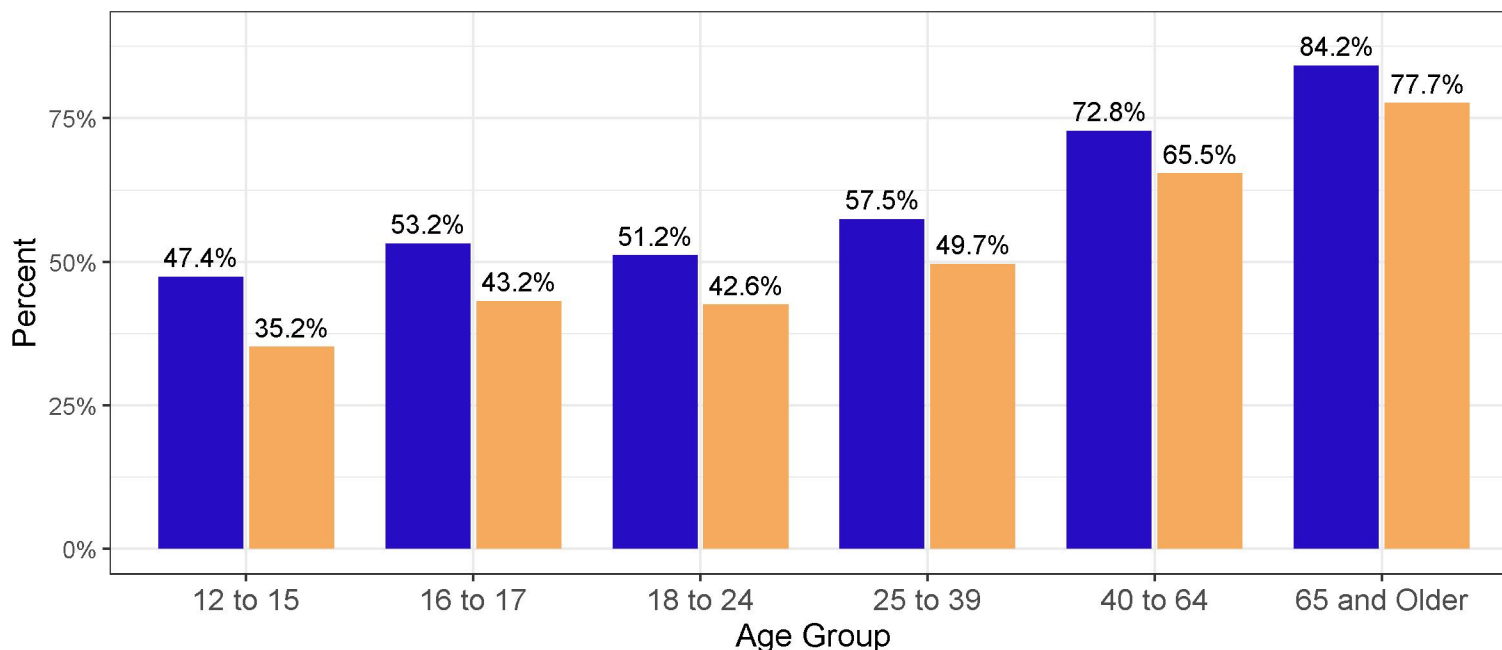
Source for equity data:

*Vaccination numbers: COVID-19 Daily Data Report from NMSIIS prepared by Katie Cruz (PHD),
Gwendolyn Gallagher (PHD), Joshua Whaley, (PHD) and Elizabeth Davis (ERD)
Analysis and graphs by Elizabeth Davis (ERD)*

Vaccine Equity: Age

Vaccination Status by Age - NMSIIS data

Vaccination Status by Age (NMSIIS), age based on today



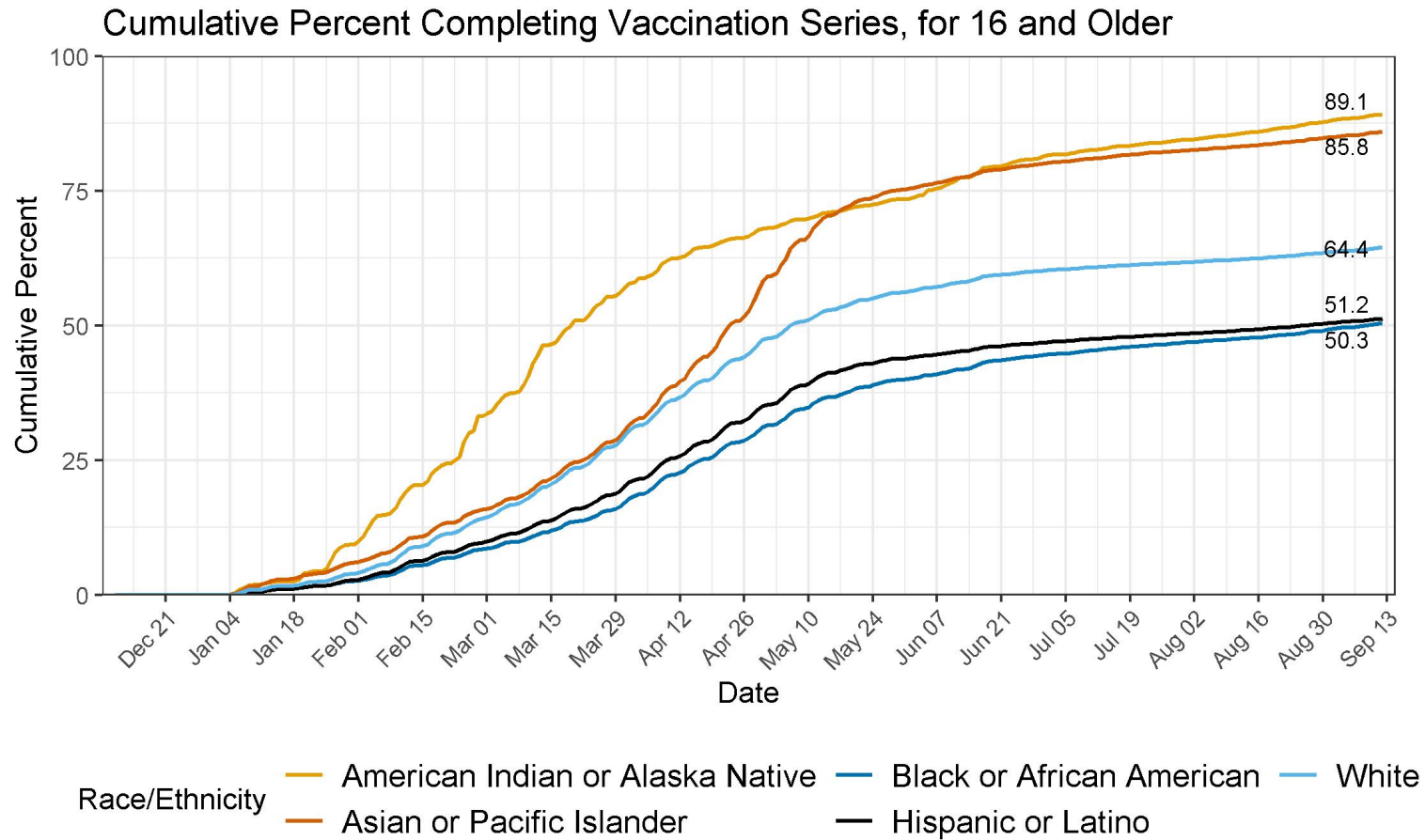
Percent of Population: ■ Receiving At Least One Dose ■ Completed Vaccination Series

Data are drawn from the New Mexico State Immunization Information System (NMSIIS) and include only residents of New Mexico. Federal data is not included; all vaccination rates shown are underestimates. The share of vaccine doses administered excludes 150 doses administered to individuals for whom age is unknown.

Vaccine Equity: Age and Race/Ethnicity

Vaccination Progress:

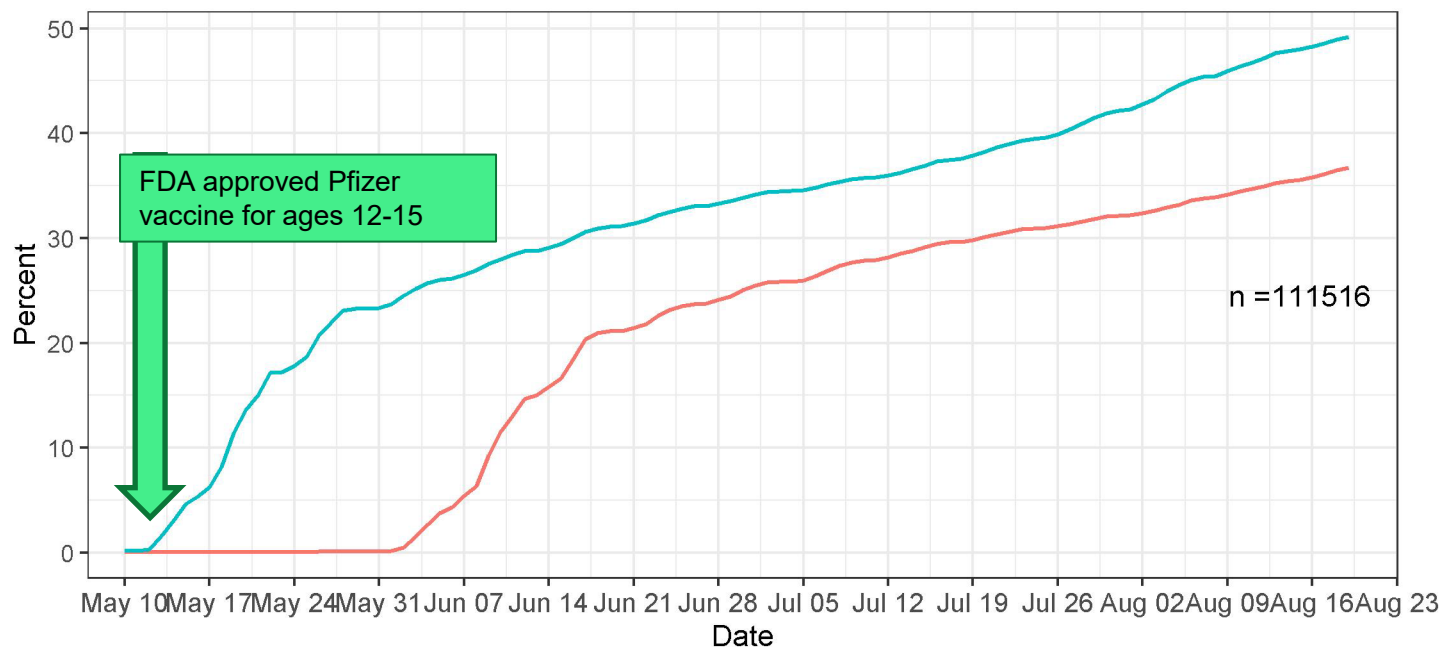
Hispanic, Latino, Black and African American Populations Amongst Lowest % Completing Vaccinations



Data are drawn from the New Mexico State Immunization Information System (NMSIIS) and Tiberius and include only residents of New Mexico.

Vaccination Progress: Ages 12-15

Cumulative % Receiving First Dose

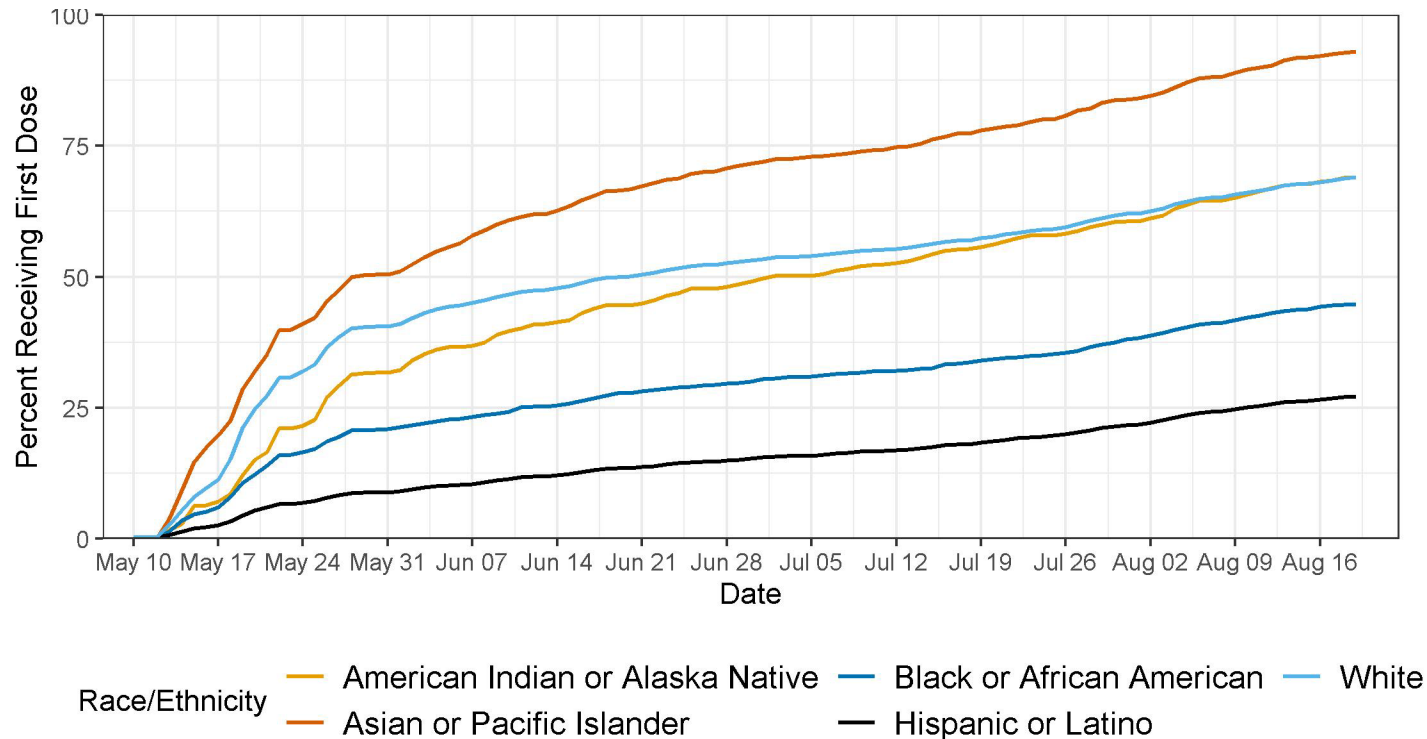


— Percent Fully Vaccinated — Percent Receiving At Least One Dose

Data are drawn from the New Mexico State Immunization Information System (NMSIIS) and include only residents of New Mexico.

Vaccination Progress Race/Ethnicity:

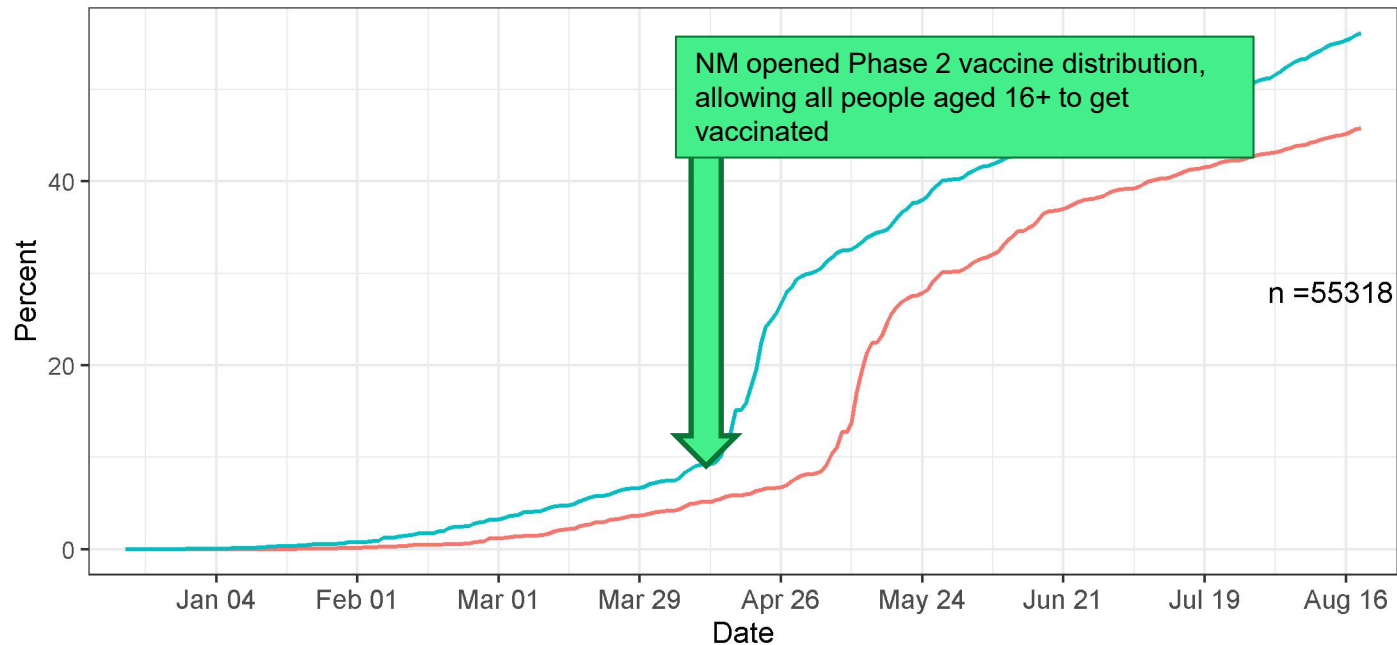
Cumulative % Receiving First Dose: Ages 12-15



Data are drawn from the New Mexico State Immunization Information System (NMSIIS) and include only residents of New Mexico.

Vaccination Progress: Ages 16-17

Cumulative % Receiving First Dose

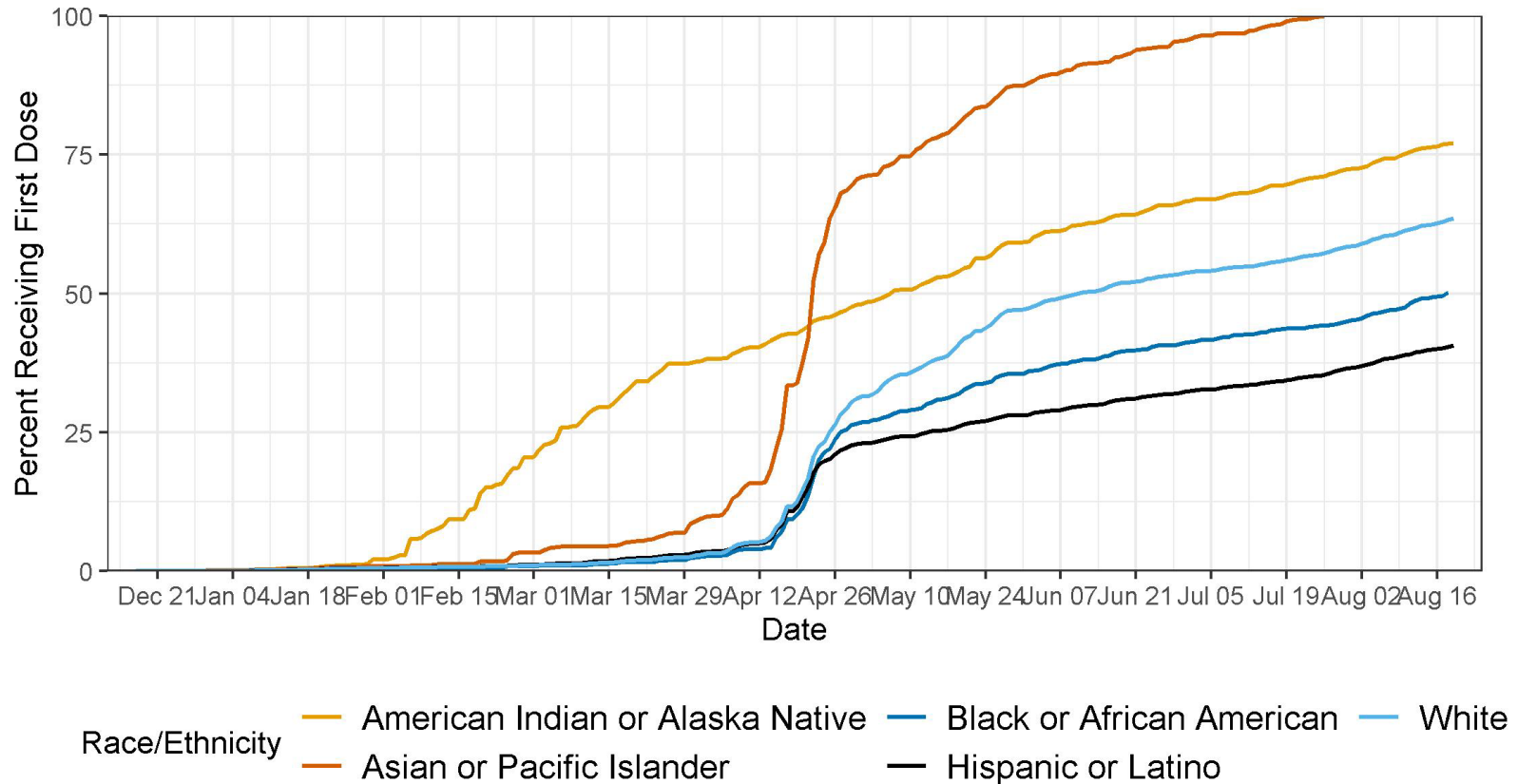


— Percent Fully Vaccinated — Percent Receiving At Least One Dose

Data are drawn from the New Mexico State Immunization Information System (NMSIIS) and include only residents of New Mexico.

Vaccination Progress Race/Ethnicity:

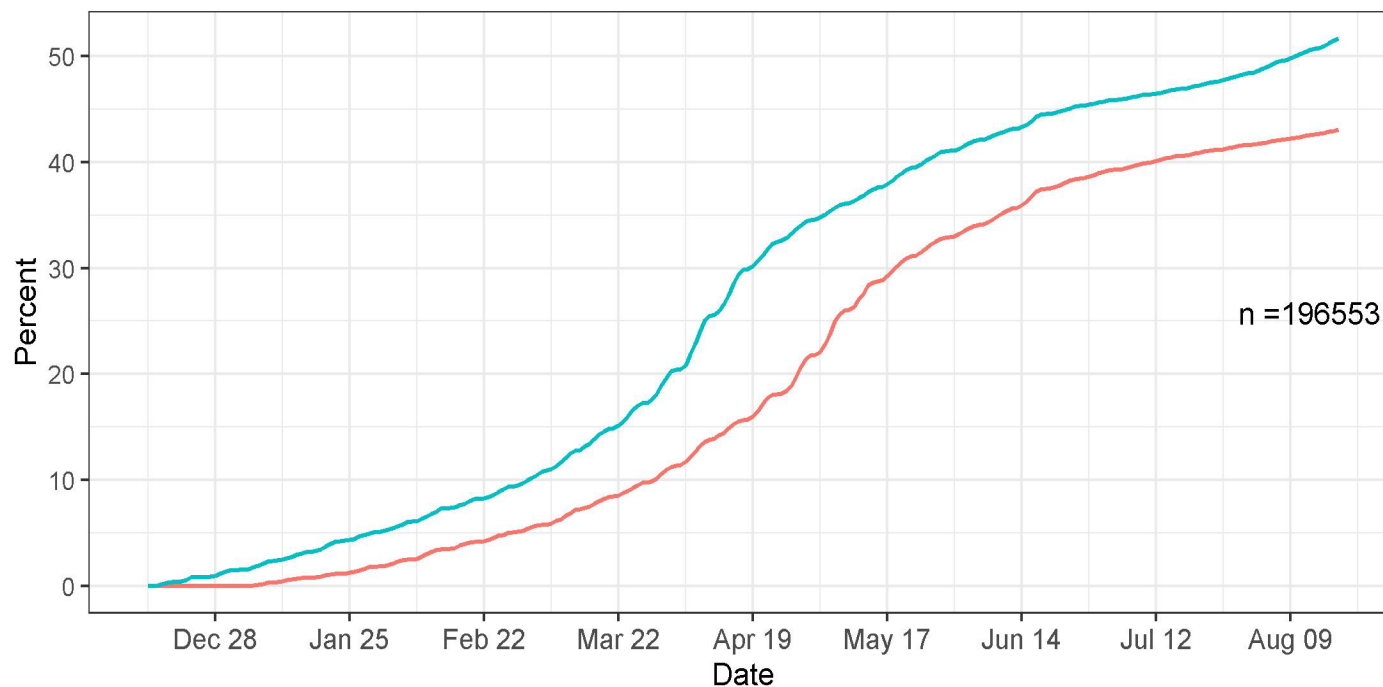
Cumulative % Receiving First Dose: Ages 16-17



Data are drawn from the New Mexico State Immunization Information System (NMSIIS) and include only residents of New Mexico.

Vaccination Progress: Ages 18-24

Cumulative % Receiving First Dose

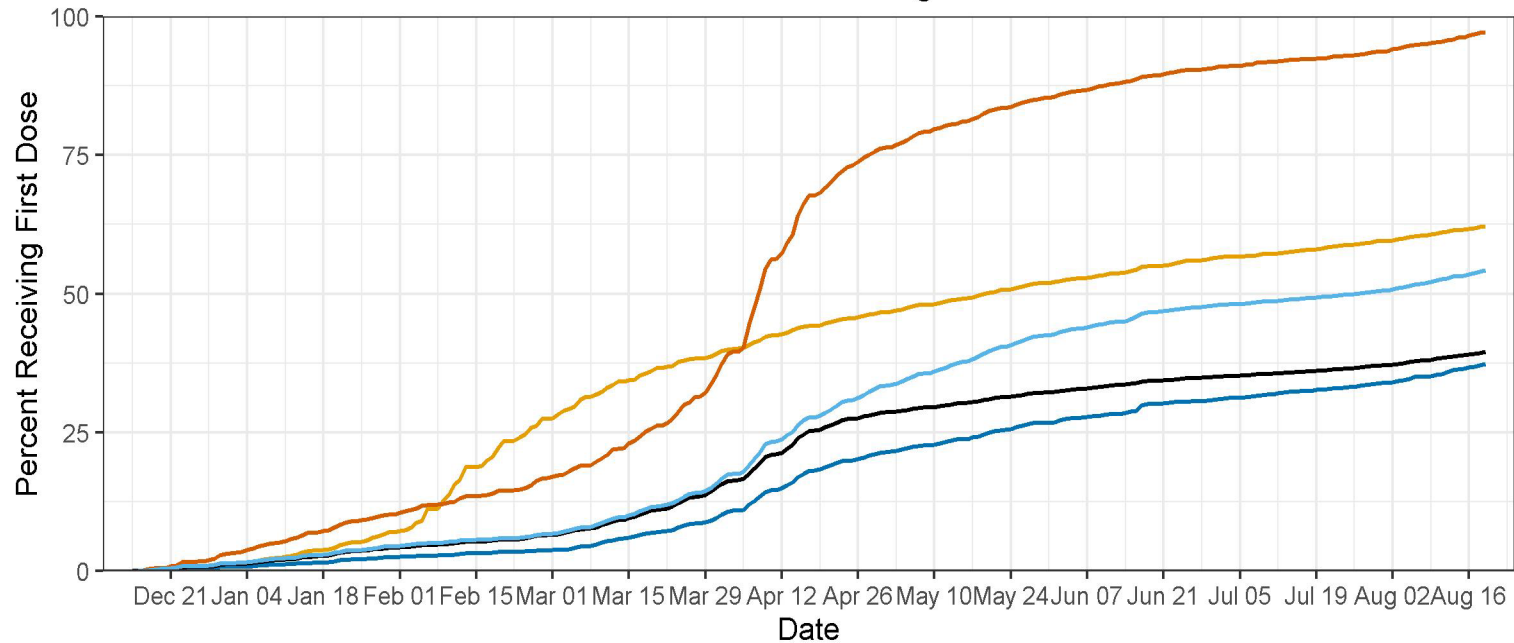


— Percent Fully Vaccinated — Percent Receiving At Least One Dose

Data are drawn from the New Mexico State Immunization Information System (NMSIIS) and include only residents of New Mexico.

Vaccination Progress Race/Ethnicity:

Cumulative % Receiving First Dose: Ages 18-24



Race/Ethnicity — American Indian or Alaska Native — Black or African American — White
— Asian or Pacific Islander — Hispanic or Latino

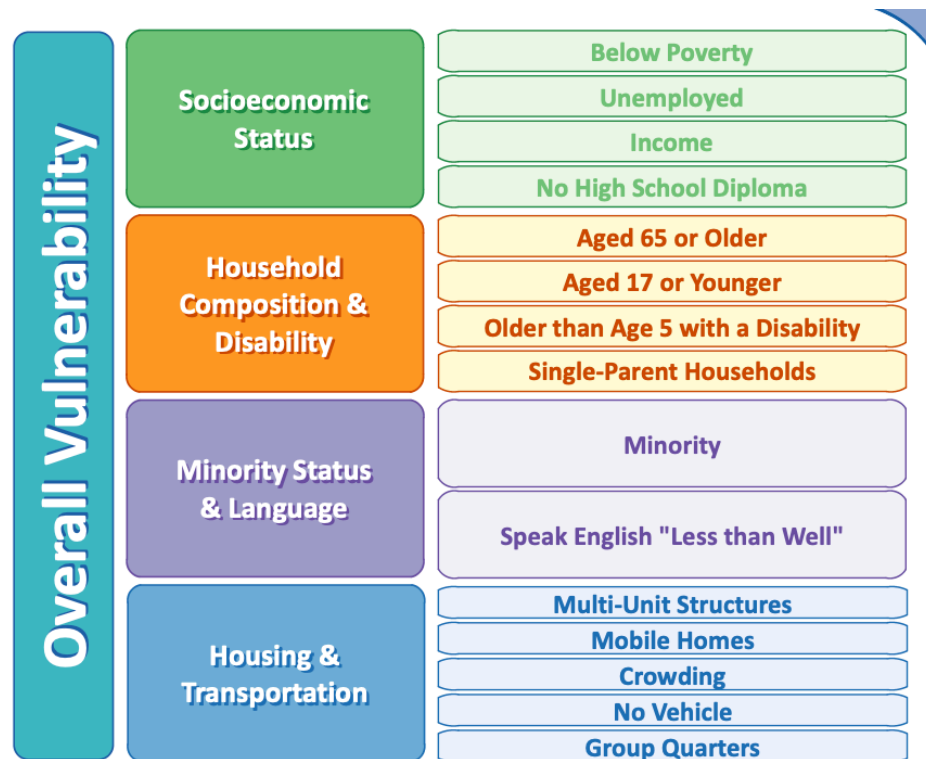
Data are drawn from the New Mexico State Immunization Information System (NMSIIS) and include only residents of New Mexico.

Vaccine Equity: Social Vulnerability Index (SVI)

Social Vulnerability Index (SVI):

Social Vulnerability Index (SVI)

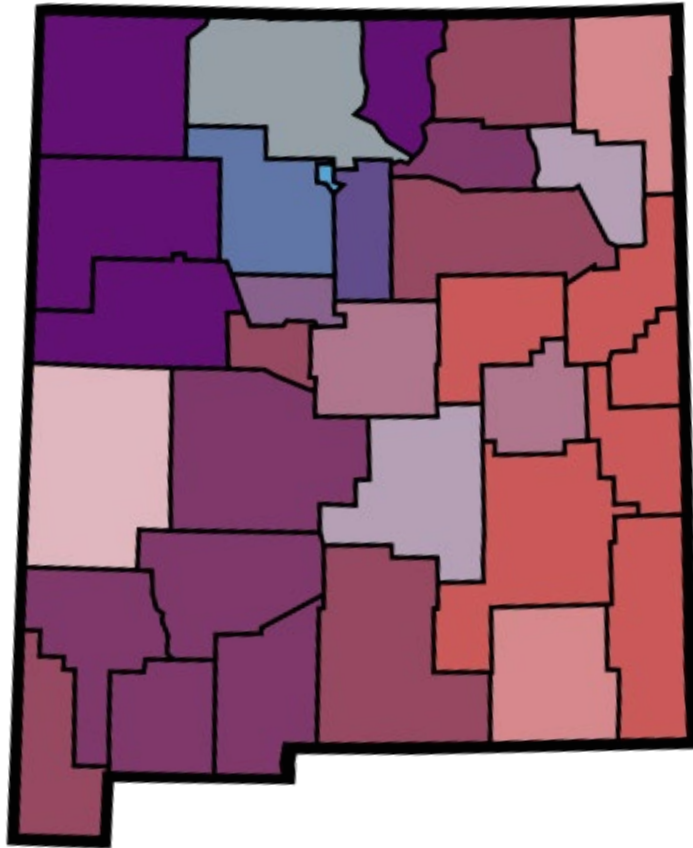
- **Social Vulnerability Index:** Uses U.S. Census Data to Determine Relative social Vulnerability of each Census tract
- Based on four related themes: socioeconomic status; household composition and disability; minority status & language; housing and transportation
- 1.0 =highest vulnerability
- 0 =Lowest vulnerability



Along with the rankings, the SVI databases include all the census variables listed above. Graphic adapted from the North Carolina Preparedness and Emergency Response Research Center.

CDC: SVI: <https://www.atsdr.cdc.gov/placeandhealth/svi/index.html>

CDC COVID-19 Vaccination Equity: Vaccination Rate and SVI

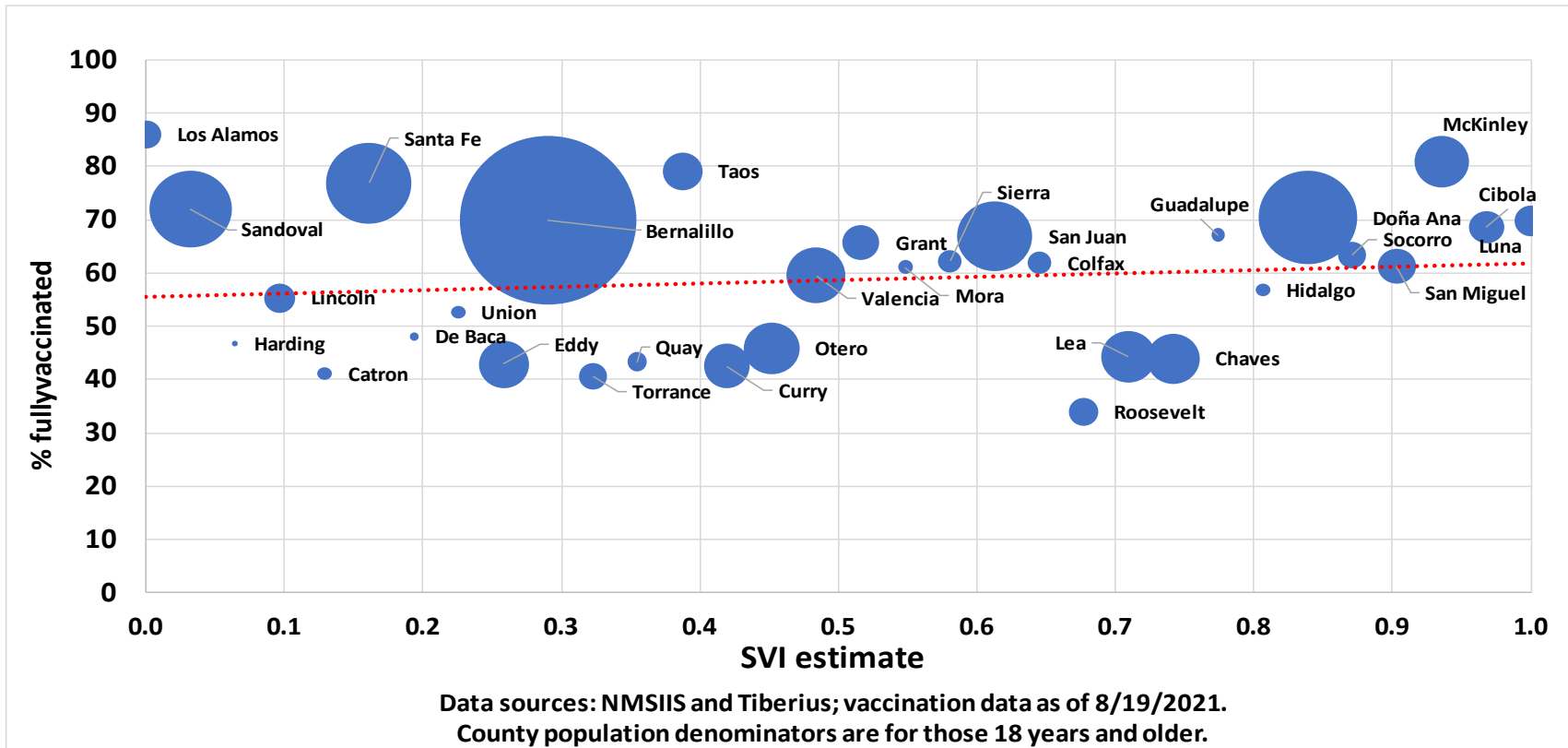


**Counties with lower reporting completeness for vaccination coverage should be interpreted with caution.*

Vaccination Coverage (VC)	0-0.25	0.2501-0.50	0.5001-0.75	0.7501-1.0
50%-99.9%	Low SVI High VC	Low-Mod SVI High VC	Mod-High SVI High VC	High SVI High VC
40-49.9%	Low SVI Mod-High VC	Low-Mod SVI Mod-High VC	Mod-High SVI Mod-High VC	High SVI Mod-high VC
30-39.9%	Low SVI Low-Mod VC	Low-Mod SVI Low-Mod VC	Mod-High SVI Low-Mod VC	High SVI Low-Mod VC
0-29.9%	Low SVI Low VC	Low-Mod SVI Low VC	Mod-High SVI Low VC	High SVI Low VC
	0-0.25	0.2501-0.50	0.5001-0.75	0.7501-1.0
	Social Vulnerability Index (SVI)			

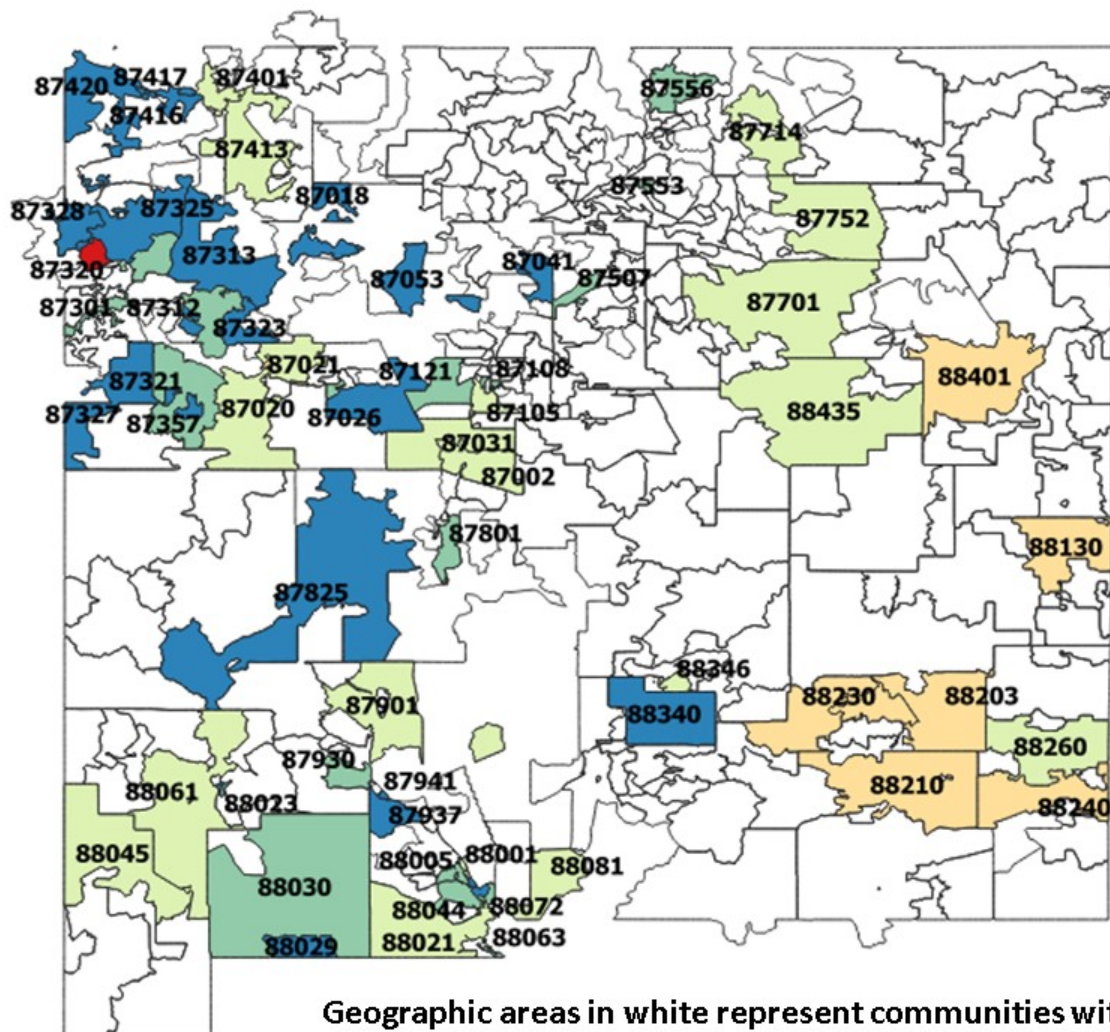
CDC COVID Data Equity Tracker: <https://covid.cdc.gov/covid-data-tracker/#vaccination-equity>

% Vaccination and SVI by County



Interpretation: Some of New Mexico's most vulnerability communities (*i.e.*, those counties with relatively high SVI estimates) also have relatively high vaccination rates.

Vaccination Rates for Highest SVI Communities



Vaccination rates for those 12 years and older, in communities with high SVI (75th percentile), as of 8/22/2021

Legend:
% with at least one vaccine

