

# COVID-19 Pediatric Case Report

November 22, 2021

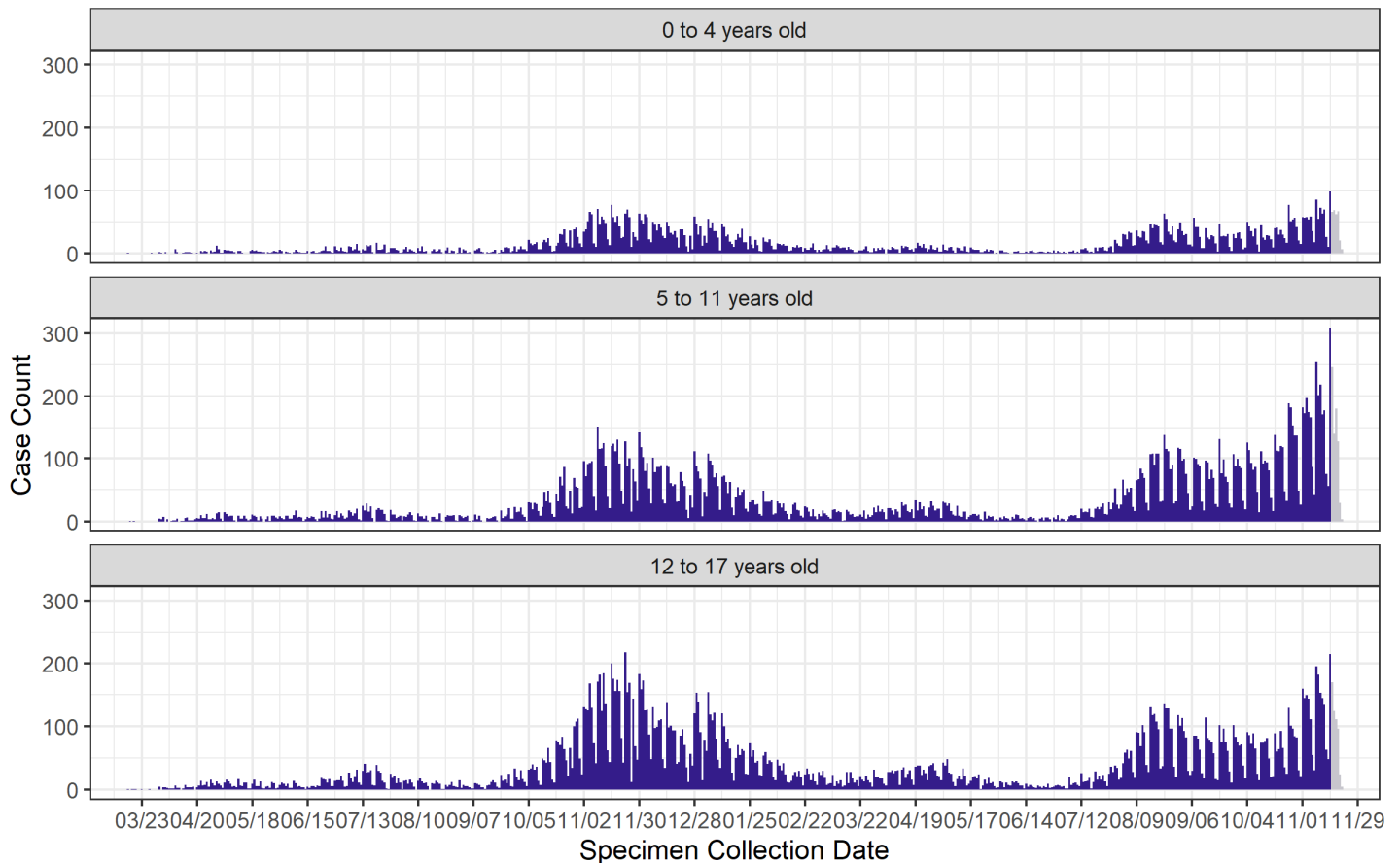
Unless stated otherwise, all data reported here exclude cases who are from out-of-state and cases who are detainees in Federal Immigration and Customs Enforcement (ICE) facilities.

Total number of pediatric cases (% of cases that are pediatric)	Number of pediatric cases in the last 7 days (% of cases in the last 7 days that are pediatric)
54014 (17.6%)	2548 (25.5%)

## SECTION 1: PEDIATRIC CASE DEMOGRAPHICS

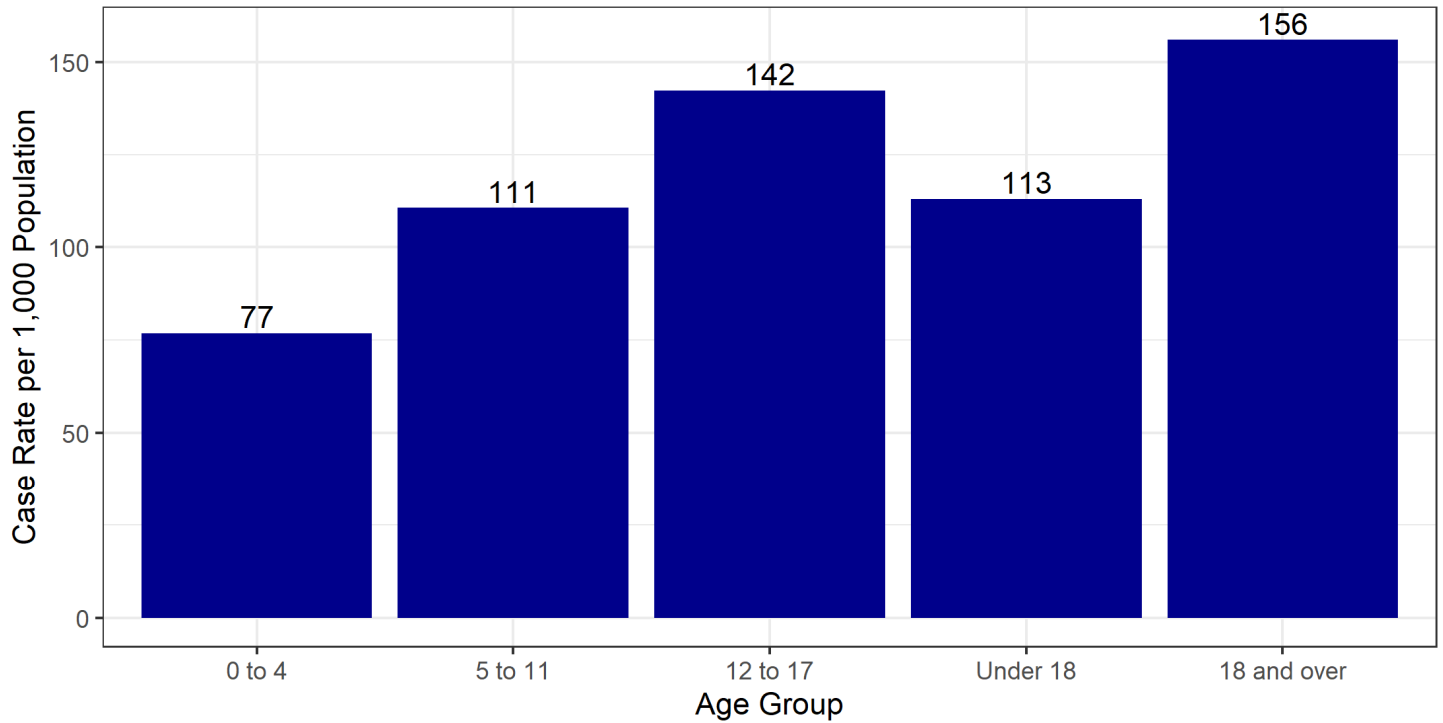
### Pediatric case count over time

Pediatric Case Count over Time



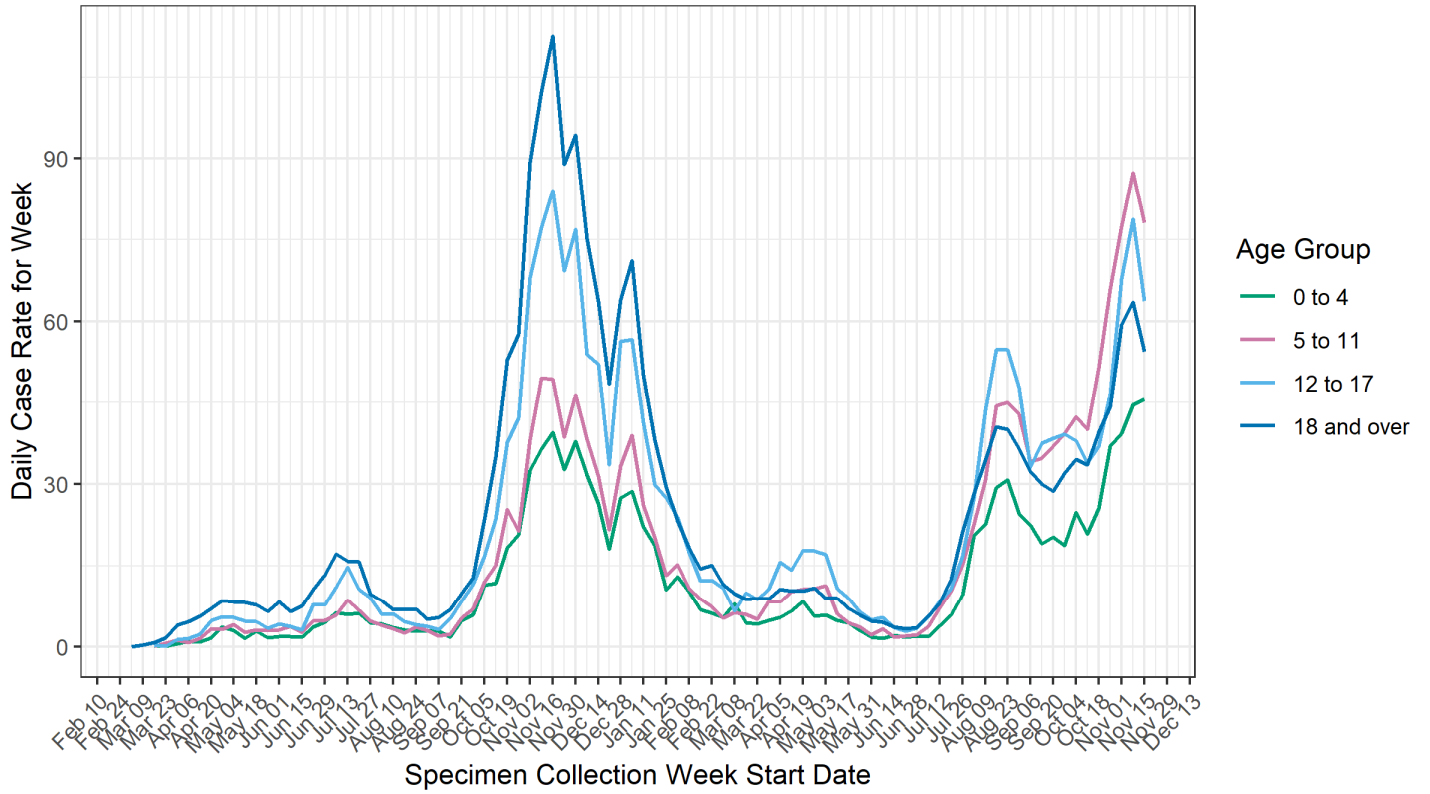
Previous 7 days are greyed out. Positive samples collected during this time may not yet be reported.

### Pediatric case rate per 1,000 population by age group



Age Group	Number of Cases	Percent of Cases	Cases per 1,000	Ratio of 18 and Over to Age Group
0 to 4	9342	3.0	76.8	0.5
5 to 11	20917	6.8	110.8	0.7
12 to 17	23755	7.7	142.4	0.9
Under 18	54014	17.6	113.1	0.7
18 and over	253657	82.4	156.1	1.0

## Daily pediatric case rate per 100,000 population by age group

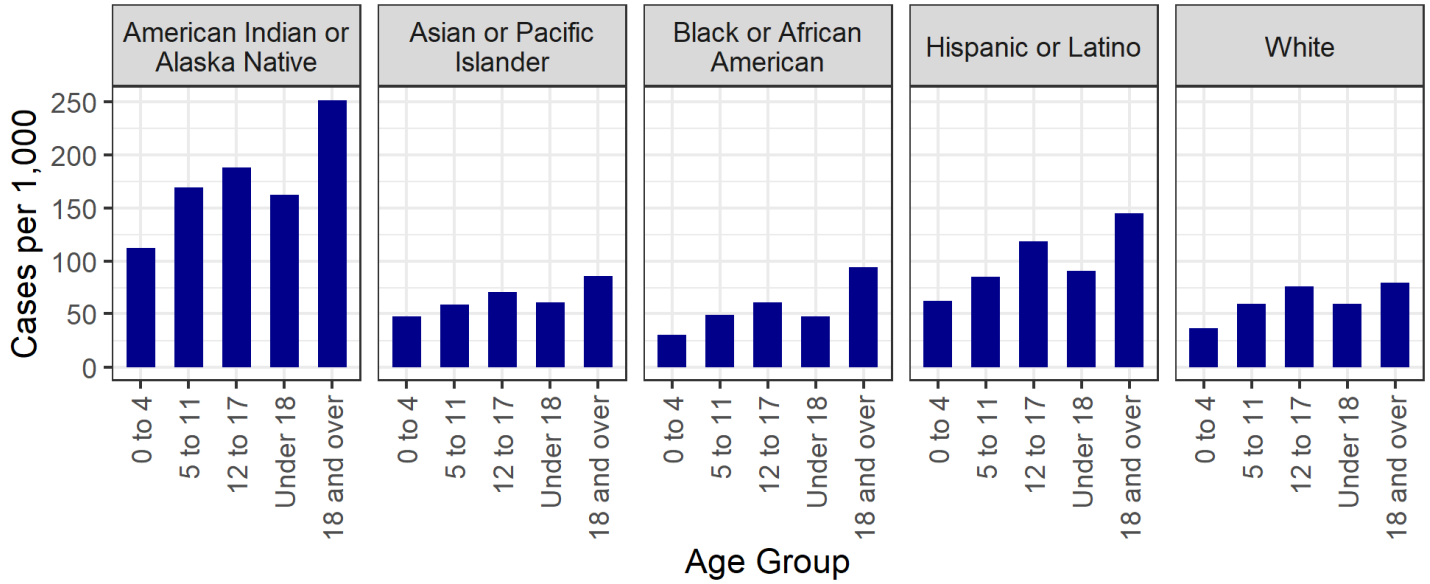


Tests collected in the last ten days may not yet have results. Recent case rates will change as these tests are processed.

## Pediatric cases by sex and age

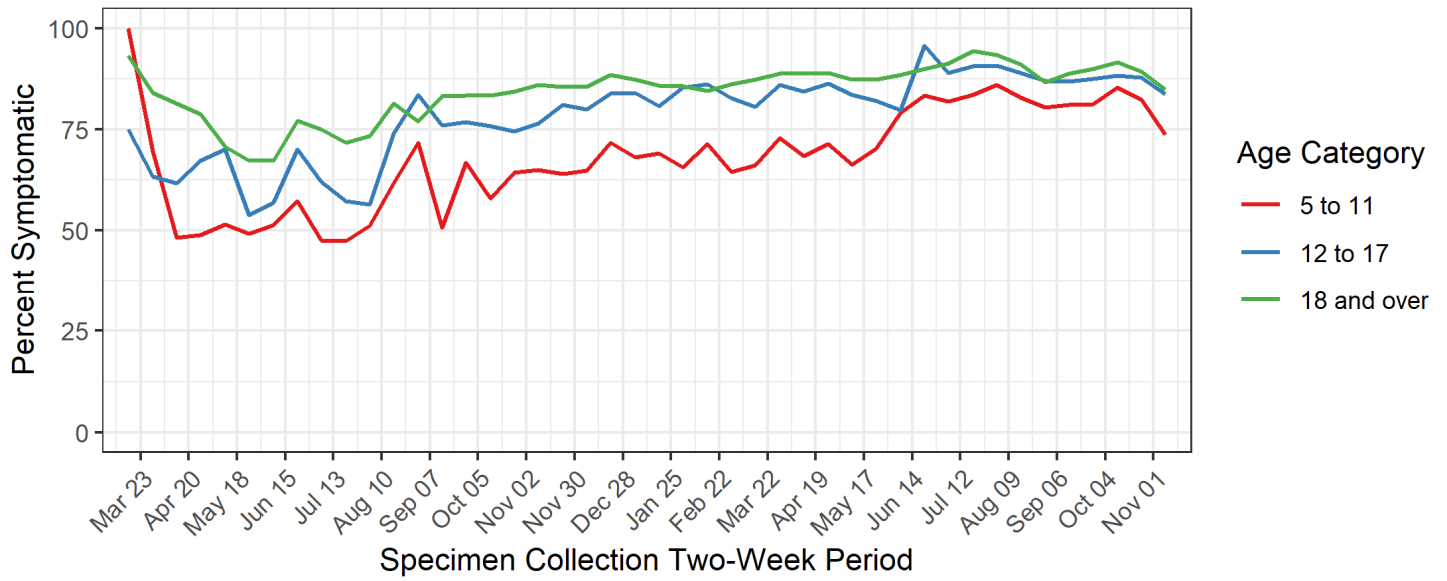
Sex	Age Group	Cases	Percent of Cases within Gender	Cases per 1,000 Population
Female	0 to 4	4473	75.1	2.8
	5 to 11	10199	110.2	6.4
	12 to 17	12064	146.8	7.6
	Under 18	26736	114.1	16.9
	18 and over	131454	158.8	83.1
Male	0 to 4	4729	76.1	3.3
	5 to 11	10420	108.2	7.2
	12 to 17	11372	134.3	7.8
	Under 18	26521	109.1	18.3
	18 and over	118424	148.5	81.7

## Rates per 1,000 population of cases by age in each race/ethnicity group



Race	Age Group	Cases	Percent	Rate per 1,000
<b>American Indian or Alaska Native</b>	0 to 4	1403	3.2	112.8
	5 to 11	3472	8.0	169.5
	12 to 17	3434	7.9	188.4
	Under 18	8309	19.1	162.4
	18 and over	35166	80.9	251.8
<b>Asian or Pacific Islander</b>	0 to 4	80	2.6	47.3
	5 to 11	152	5.0	59.0
	12 to 17	175	5.8	71.0
	Under 18	407	13.4	60.4
	18 and over	2623	86.6	86.6
<b>Black or African American</b>	0 to 4	97	2.4	30.5
	5 to 11	242	6.1	49.0
	12 to 17	231	5.8	60.9
	Under 18	570	14.4	47.8
	18 and over	3392	85.6	94.9
<b>Hispanic or Latino</b>	0 to 4	4535	3.4	61.8
	5 to 11	9785	7.3	85.8
	12 to 17	11943	8.9	118.8
	Under 18	26263	19.5	91.2
	18 and over	108503	80.5	145.1
<b>White</b>	0 to 4	1135	1.9	36.6
	5 to 11	2778	4.5	59.3
	12 to 17	3207	5.2	76.7
	Under 18	7120	11.6	59.5
	18 and over	54054	88.4	80.5

# Percent of school-aged pediatric cases with symptoms by age group



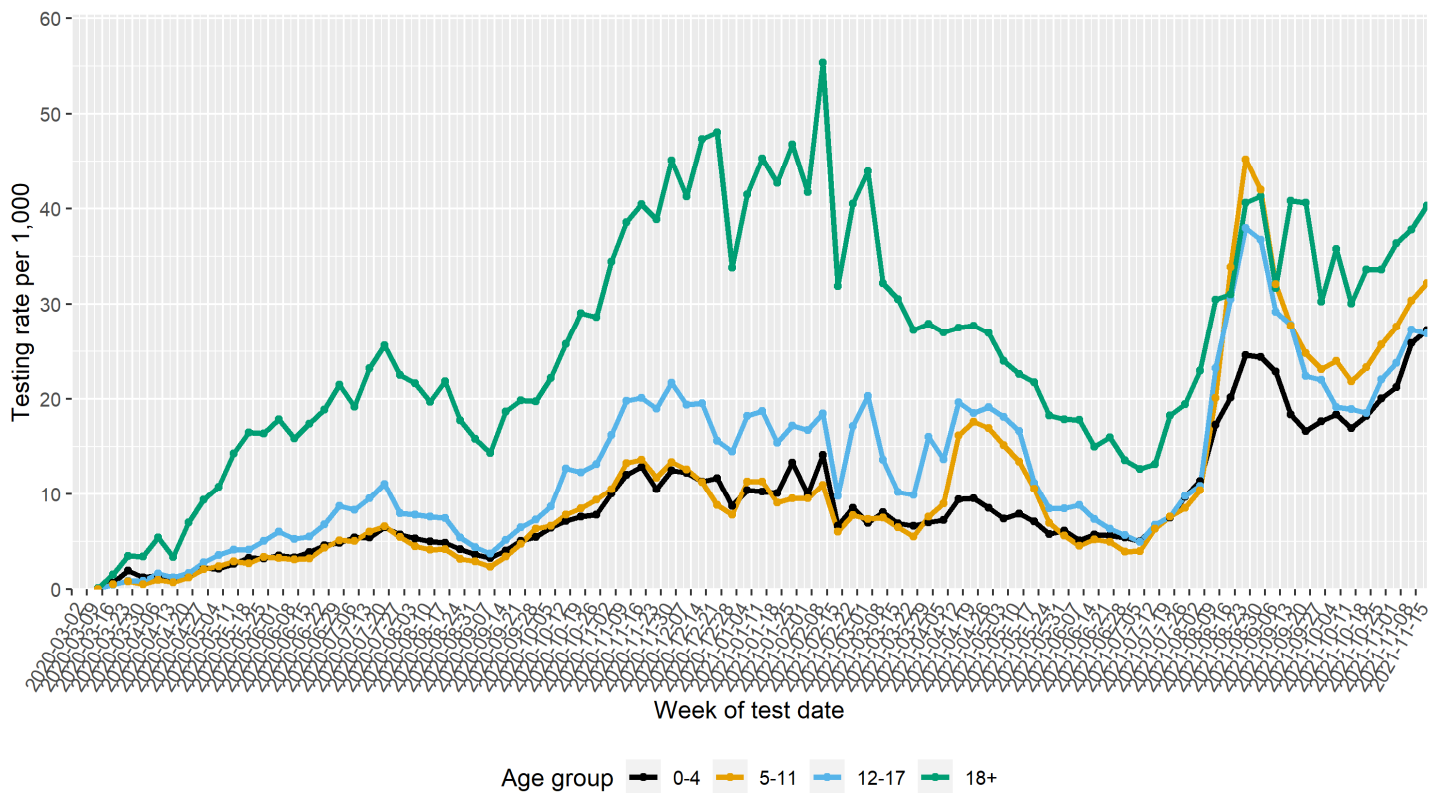
## SECTION 2: PEDIATRIC TESTING RATES AND POSITIVITY

### Cumulative testing rates per 1,000 population and test positivity by age group

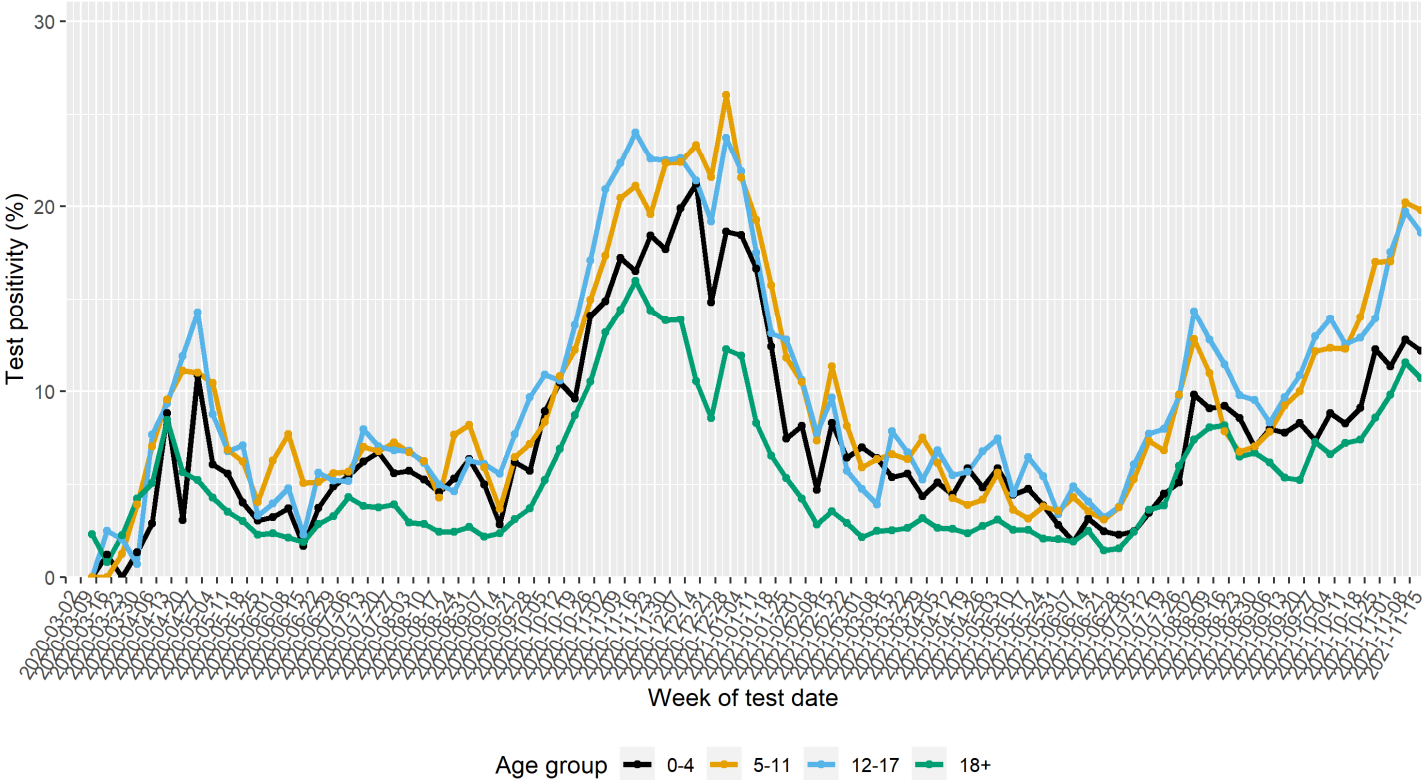
Tests include PCR and antigen

Age Group (years)	Total Number of Cases	Cumulative tests per 1,000 population	Cumulative test positivity (%)
<b>0-4</b>	9322	796.2	9.1%
<b>5-11</b>	21051	942.9	11.2%
<b>12-17</b>	23824	1154.5	11.7%
<b>18+</b>	251696	2321.4	6.3%

### Testing rates per 1,000 population by age group by week



# Test positivity (%) by age group by week





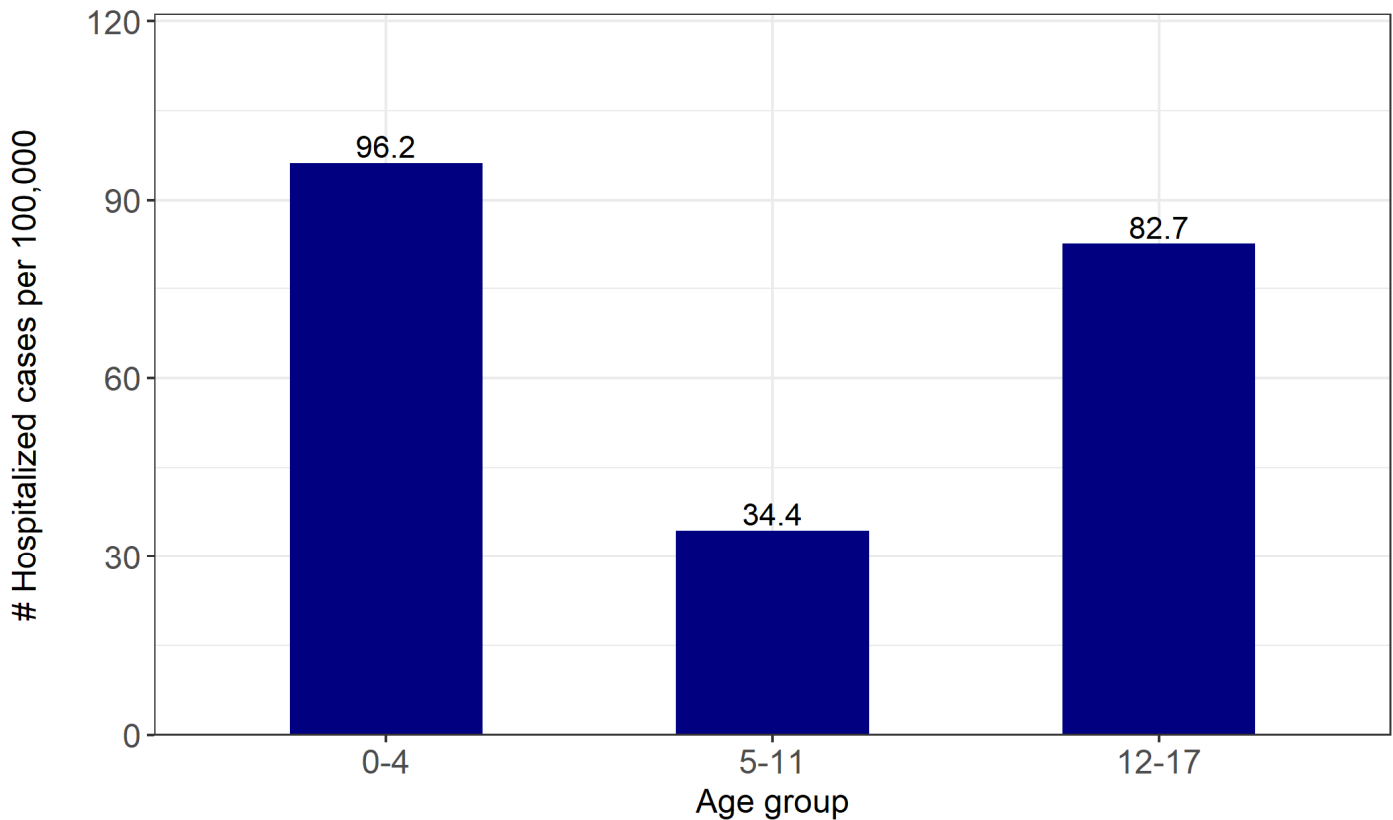
### SECTION 3: PEDIATRIC HOSPITALIZATIONS

*Out-of-state pediatric cases were excluded.*

Total pediatric hospitalizations	Pediatric hospitalizations in the last week	Total Pediatric deaths
320	8	5

#### Hospitalization rate per 100,000 population and percentage by age group

*It should be noted that due to the small number of hospitalizations of pediatric cases, the hospitalization rates per 100,000 population for these age groups should be interpreted with caution.<sup>1</sup>*



<sup>1</sup> Ongoing efforts to improve the completeness and accuracy of the hospitalization data will result in week-to-week changes in the cumulative hospitalization counts. These changes are not affecting recent hospitalization data, but will affect the historical (i.e., cumulative) hospitalization baseline.

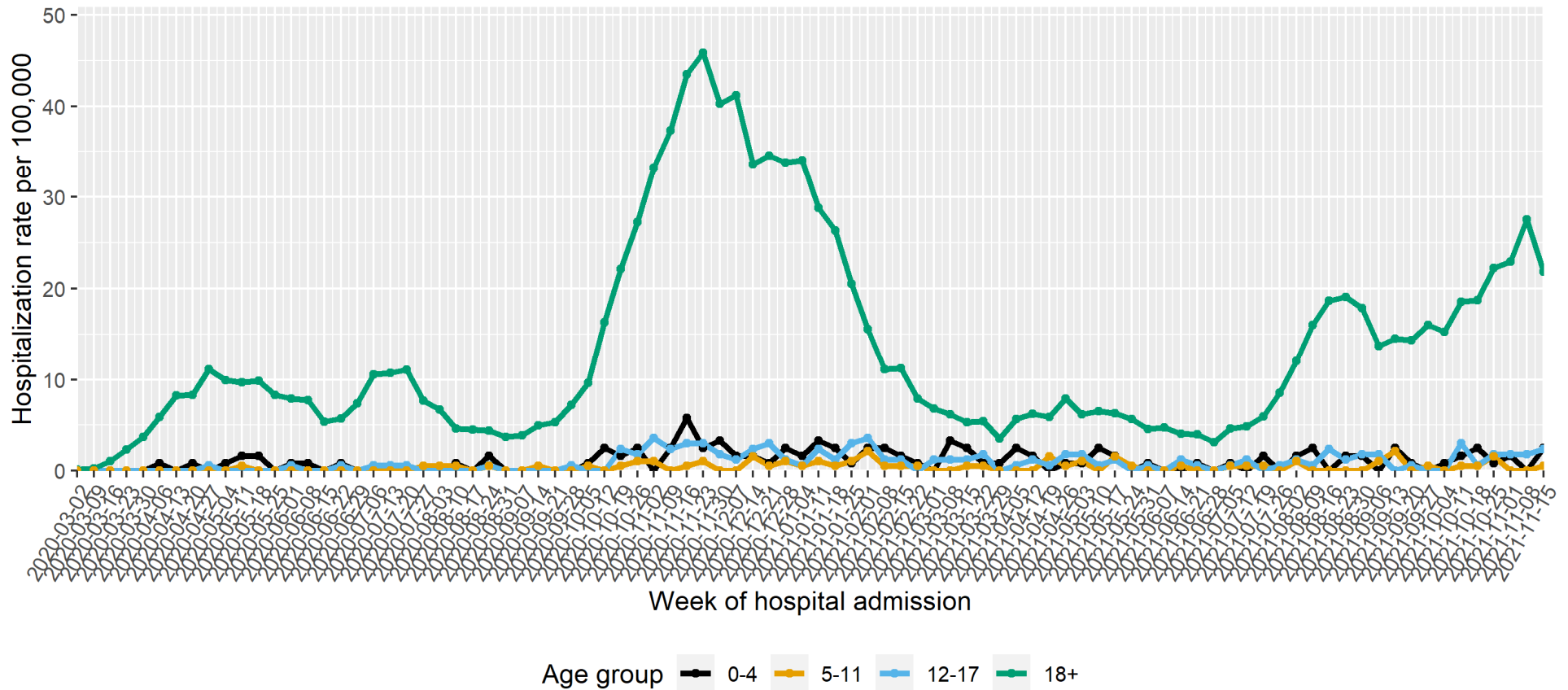
Table 1. Number of hospitalizations, percent of hospitalizations and rate of hospitalization per 100,000 for cases under 18 years old

Age group (years)	Number of hospitalizations	Percent of hospitalizations Under 18 years old	Hospitalization rate per 100,000 population
<b>0-4</b>	117	36.6%	96.2
<b>5-11</b>	65	20.3%	34.4
<b>12-17</b>	138	43.1%	82.7

Table 2. Number of hospitalizations, percent of hospitalizations and rate of hospitalization per 100,000 for cases under 18 years old compared to 18 years and over

Age group (years)	Number of hospitalizations	Percent of hospitalizations Under 18 years old	Hospitalization rate per 100,000 population
<b>Under 18</b>	320	1.6%	67.00
<b>18+</b>	19242	98.4%	1183.90

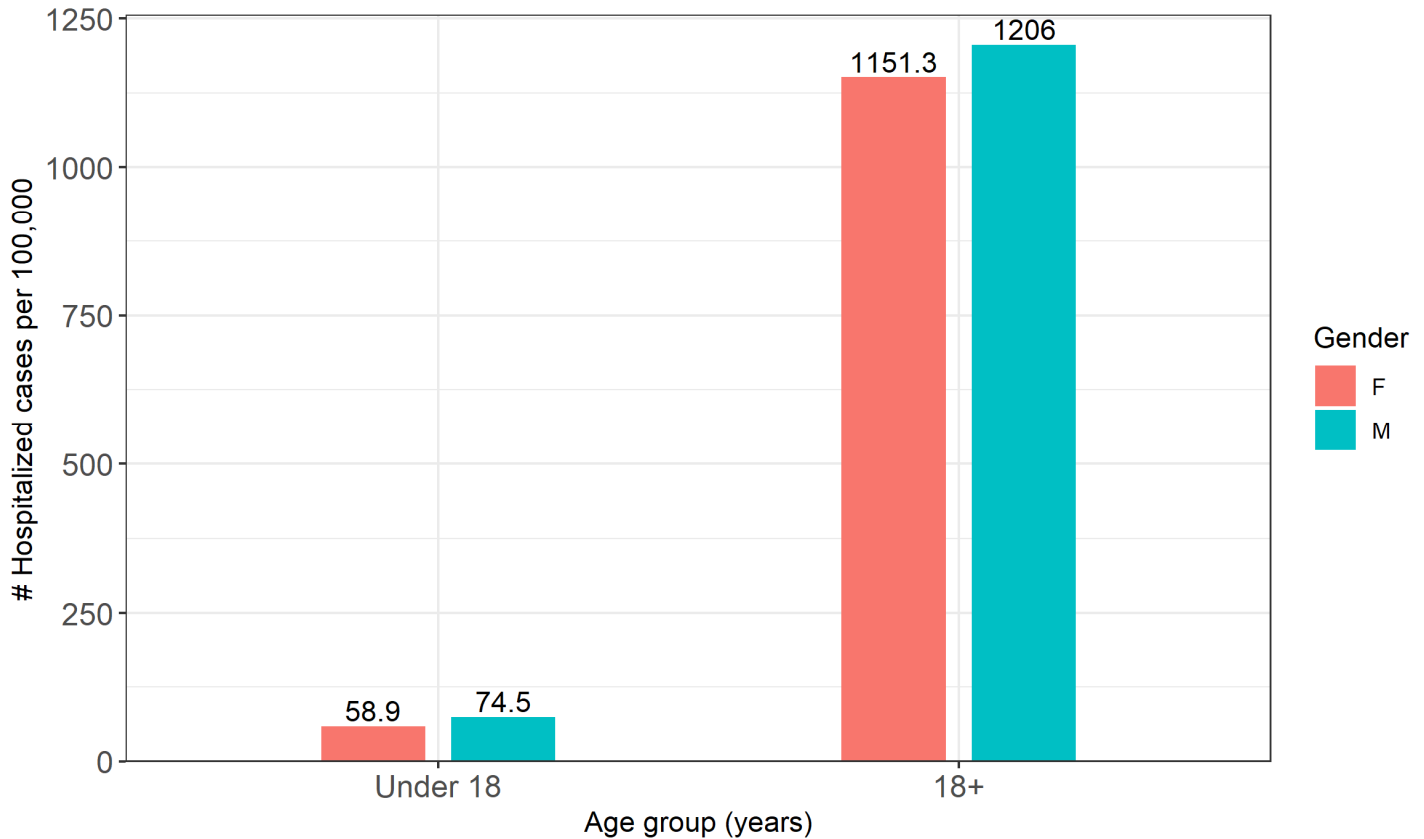
## Hospitalizations per 100,000 population by age each week



**Finding:** Overall, the hospitalization rates per 100,000 population among the pediatric age groups have remained low. It should be noted that due to the small number of hospitalizations of pediatric cases, the hospitalization rates per 100,000 population for these age groups should be interpreted with caution

Note: Hospitalizations in the previous week may not yet be reported.

## Hospitalization rate per 100,000 population and percentage by sex



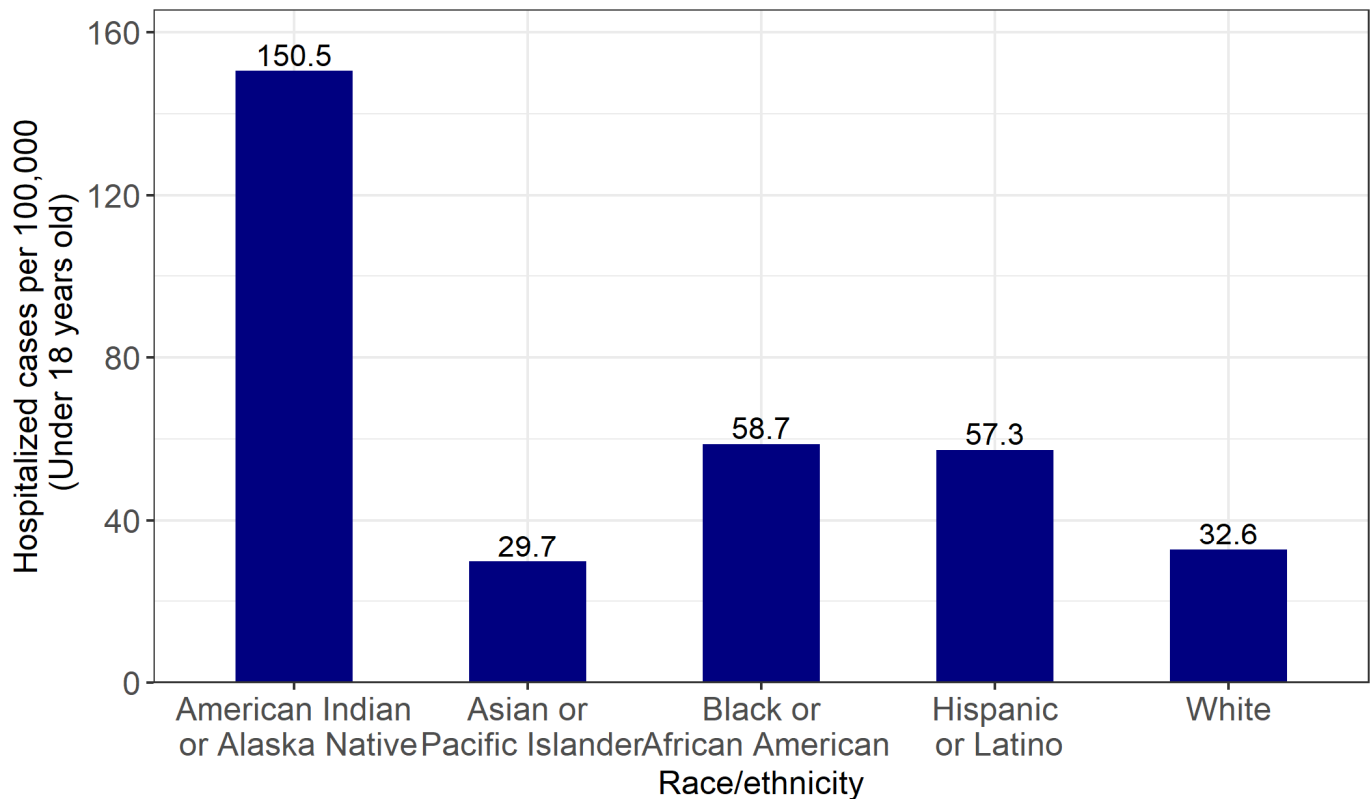
Age group (years)	Sex	Number of hospitalizations	Percent of hospitalizations within age group	Hospitalization rate per 100,000
<b>Under 18</b>	Female	138	43.3%	58.9
	Male	181	56.7%	74.5
<b>18+</b>	Female	9531	49.8%	1151.3
	Male	9617	50.2%	1206

Note: 164 cases were excluded due to missing or unknown sex information.

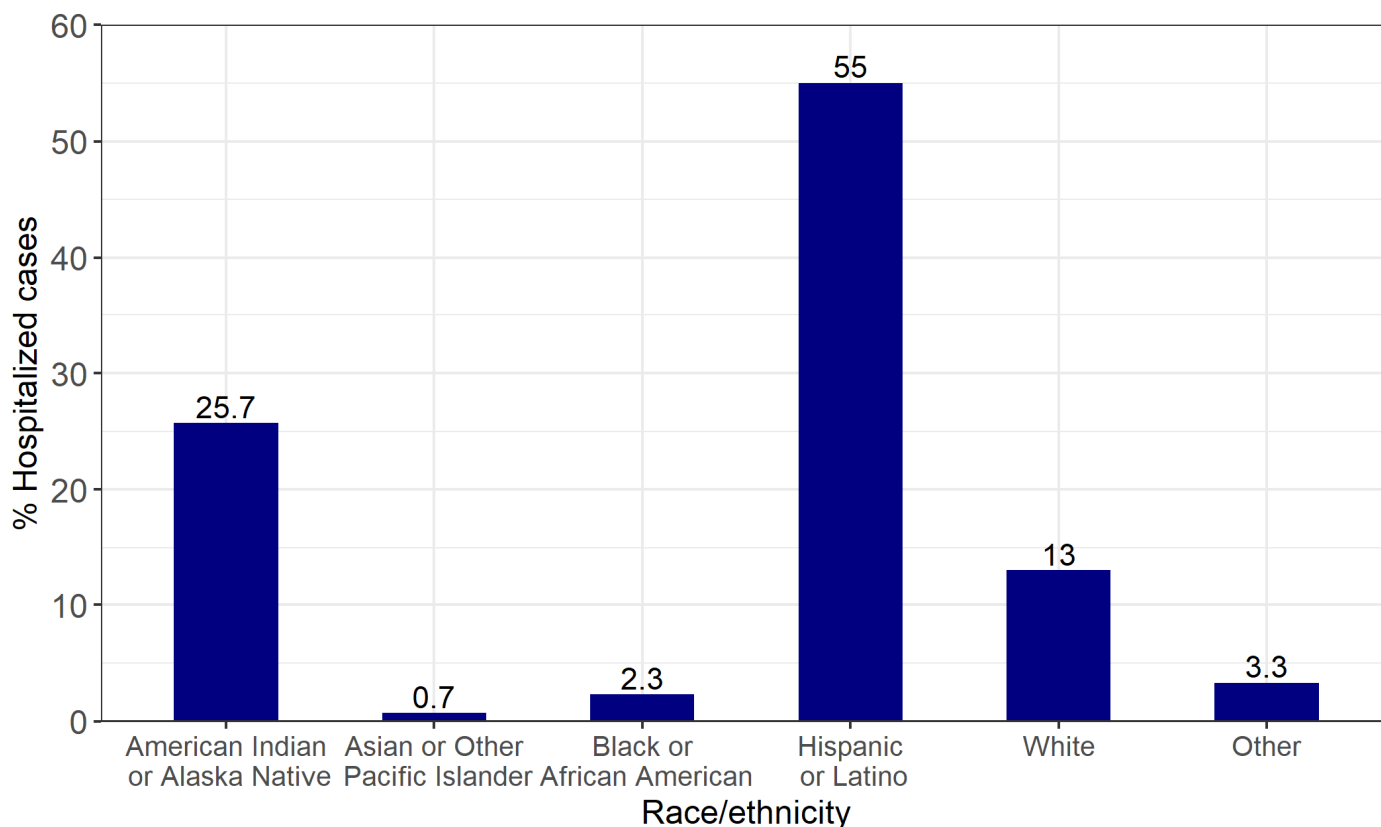
**Finding:** The hospitalization rate per 100,000 population is similar between males and females within the Under 18 and over 18 years age groups. It should be noted that due to the small number of hospitalizations of pediatric cases, the hospitalization rates per 100,000 population for these age groups should be interpreted with caution.

## Hospitalization rate per 100,000 population and percentage by race/ethnicity

**Finding:** In the Under 18 years old age group, the hospitalization rate per 100,000 population is the highest in American Indian or Alaska Native children at **150.5** followed by Black or African American at **58.7**. However, Hispanic or Latino children make up **55.0%** of the total number of pediatric cases hospitalized, followed by American Indian or Alaska Native children, at **25.7%**. It should be noted that due to the small number of hospitalizations of pediatric cases, the hospitalization rates per 100,000 population for these age groups should be interpreted with caution.



Note: For Under 18 years age group, 17 cases had missing race/ethnicity information and were excluded. 13 cases "Refused to answer" or answered "Other" and were also excluded.



Age group (years)	Race/ethnicity	Number of hospitalizations	Percent of hospitalizations within age group	Hospitalization rate per 100,000 population
<b>Under 18</b>	<b>American Indian or Alaska Native</b>	77	25.7%	150.5
	<b>Asian</b>	2	0.7%	29.7
	<b>Black or African American</b>	7	2.3%	58.7
	<b>Hispanic or Latino</b>	165	55.0%	57.3
	<b>White</b>	39	13.0%	32.6
<b>18+</b>	<b>American Indian or Alaska Native</b>	5256	28.4%	3763.8
	<b>Asian</b>	193	1.0%	637.2
	<b>Black or African American</b>	243	1.3%	680.2
	<b>Hispanic or Latino</b>	7786	42.1%	1041.1
	<b>White</b>	4731	25.6%	704.2

Notes:

- For Under 18 years age group, 17 cases had missing race/ethnicity information and were excluded. 13 cases “Refused to answer” or answered “Other” and were also excluded.
- For the “18+” years age group, 721 had missing race/ethnicity information and were excluded. 312 cases “Refused to answer” or answered “Other” and were also excluded.
- Rates for Native Hawaiian or Other Pacific Islanders and “Other” are excluded, as there are no population estimates for these populations.

## Data Sources

- **COVID-19 data**
  - **New Mexico Electronic Disease Surveillance System (NM-EDSS)**, Infectious Disease Epidemiology Bureau, Epidemiology and Response Division, New Mexico Department of Health.
  - **Salesforce/MTX COVID-19 Case Investigation Platform.**
- **Population Estimates:** University of New Mexico, Geospatial and Population Studies (GPS) Program.

## Data Notes

- **The data reported in this weekly update may not match the daily numbers that are reported in the New Mexico Department of Health (NMDOH) press releases and/or the NMDOH COVID-19 data dashboard. This may be due to variation in the date and time of data extraction from NM-EDSS, corrections after quality assurance review, and differences in the exclusion criteria.**
- **New Mexico Electronic Disease Surveillance System (NM-EDSS).** Disease incidence data are derived from reports of notifiable infectious diseases. NMDOH relies on health care providers, laboratories, hospitals, clinics, institutions and individuals to report suspected and confirmed notifiable infectious diseases in accordance with New Mexico Administrative Code 7.4.3.13. Under-reporting can occur due to lack of awareness about reporting requirements or lack of compliance with those requirements. Not all cases of infectious diseases can be detected for various reasons including lack of access to health care services, lack of laboratory testing or concerns about confidentiality. Specific and standardized national case definitions are used to classify disease reports by case status.
- **New Mexico Population Estimates.** All population estimates apply to July 1 of 2019. Estimates include decimal fractions. The sum of population subgroup estimates may not exactly equal the overall state population estimate due to rounding error. Population estimates for previous years are occasionally revised as new information becomes available. When publishing trend data, always be sure that your rates for earlier years match current rates on NM-IBIS that have been calculated with the most up-to-date population estimates.
- **Race/Ethnicity.** Race/Ethnicity are reported as a single variable according to the selection of the case. Any case who is Hispanic is in the Hispanic category and all other races are non-Hispanic.
- **Gender** refers to a person's internal sense of being male, female, some combination of male and female, or neither male nor female. **Sex** refers to the biological anatomy of an individual's reproductive system, and secondary sex characteristics.
- **Case rate per 100,000 population.** A basic measure of disease-specific case frequency is a rate, which takes into account the number of cases and the population size. It is helpful in making public health decisions for a given population, relative to another population regardless of size.