

# NEW MEXICO COVID-19 CASES UPDATE

## STATEWIDE AND COUNTY-LEVEL TRENDS

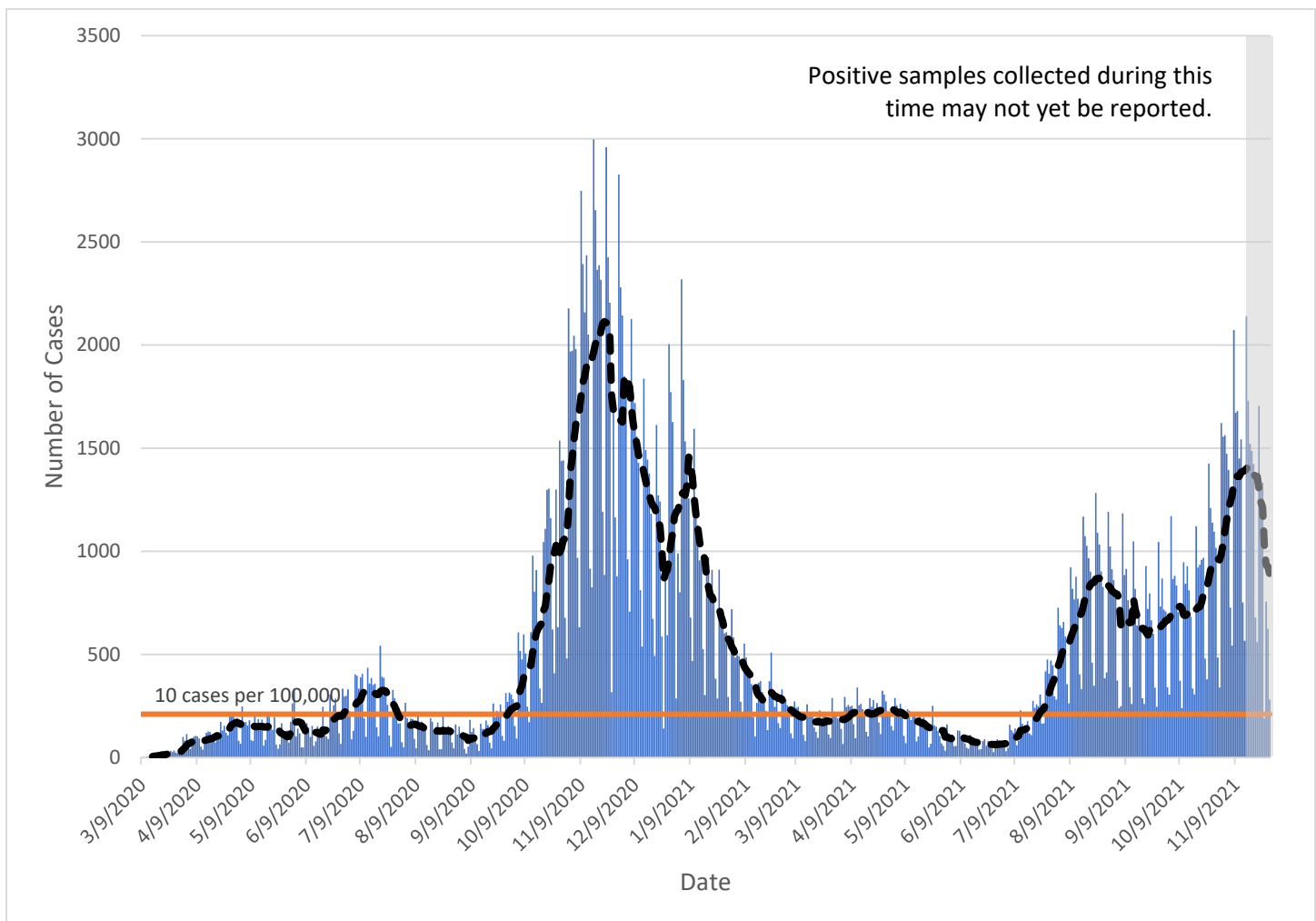
November 29<sup>th</sup>, 2021

Unless stated otherwise, all data reported here exclude cases who are from out-of-state and cases who are detainees in Federal Immigration and Customs Enforcement (ICE) facilities.

Total Cases	Cases in the Last 7 Days
313,139 <sup>1</sup>	7,465

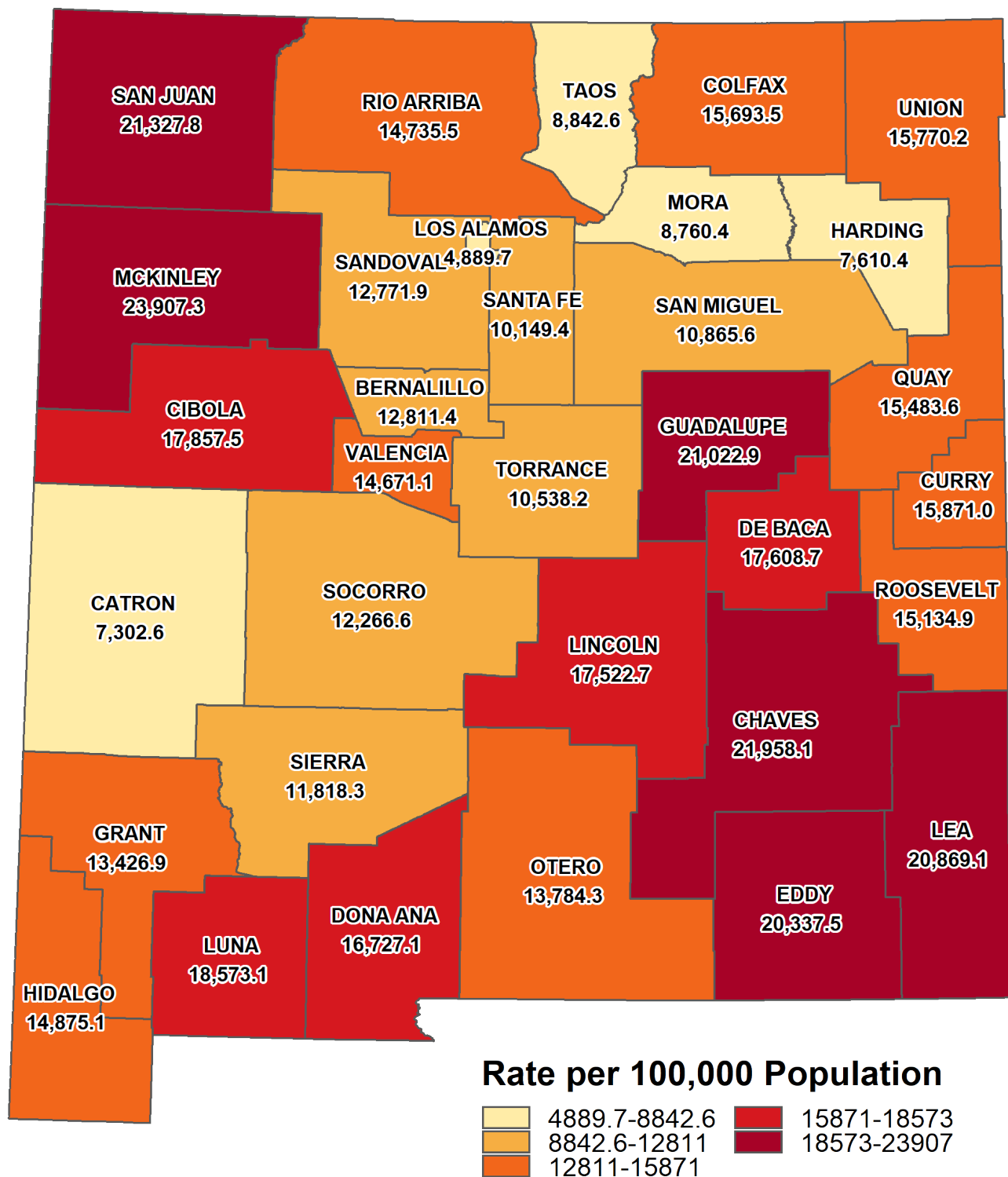
### SECTION 1: STATEWIDE AND COUNTY-LEVEL CASES

#### New Mexico cases by date of specimen collection with 7 day moving average

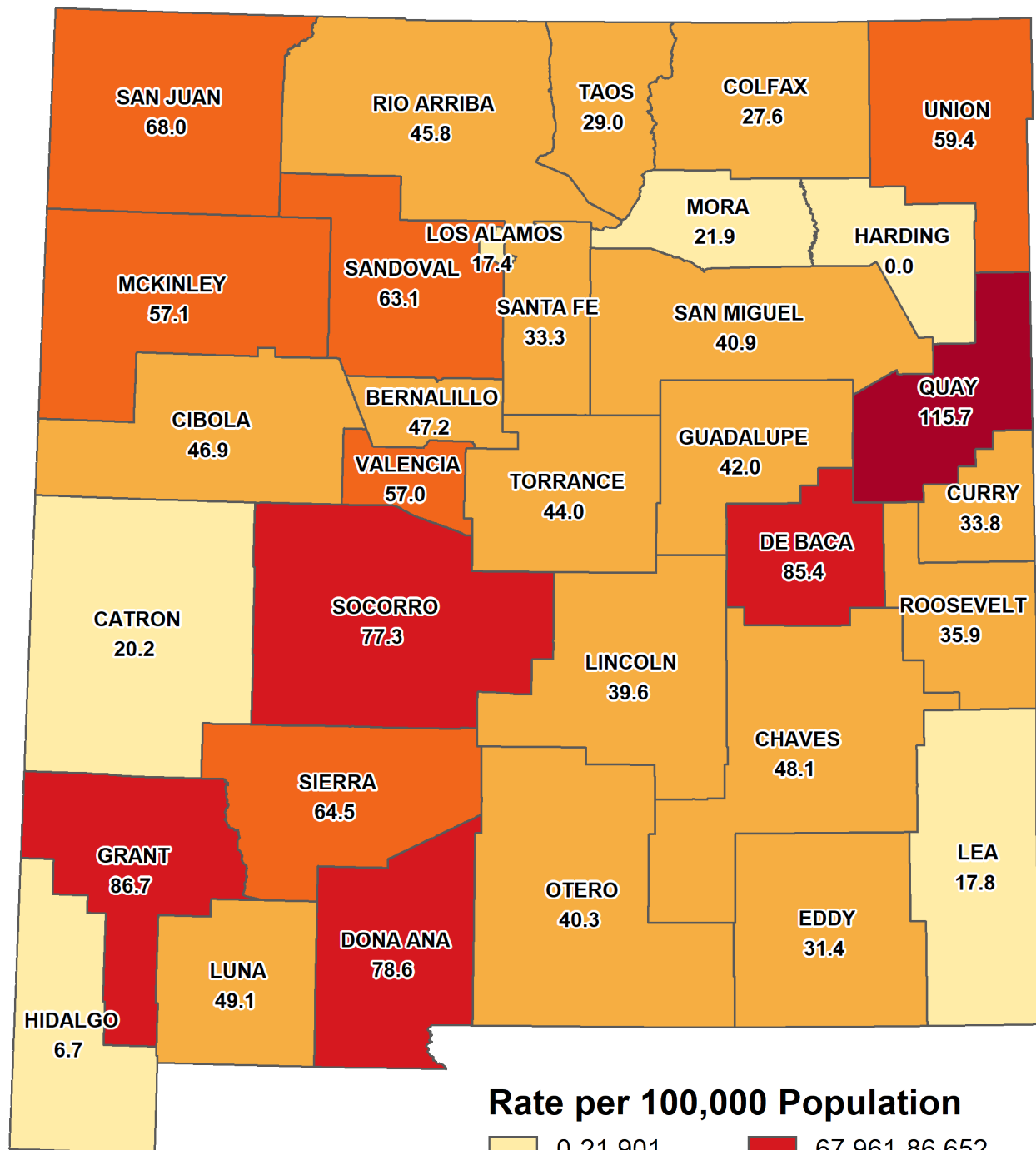


<sup>1</sup> Total cases, as reported on [cv.nmhealth.org](https://cv.nmhealth.org), include ICE detainees.

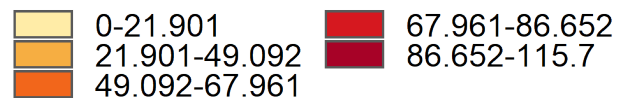
# Cumulative case rate per 100,000 population by New Mexico County



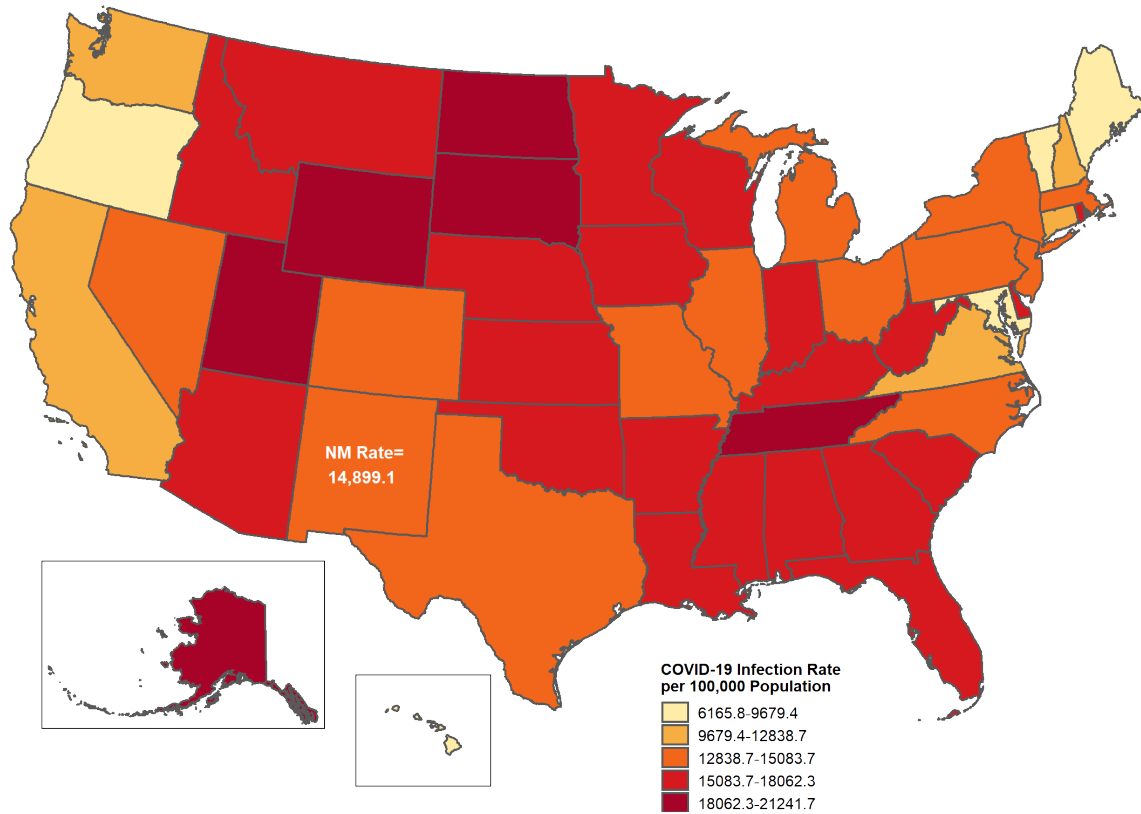
Average daily case rate per 100,000 population in the previous 7 days by New Mexico County  
(11/22 - 11/28)



Rate per 100,000 Population

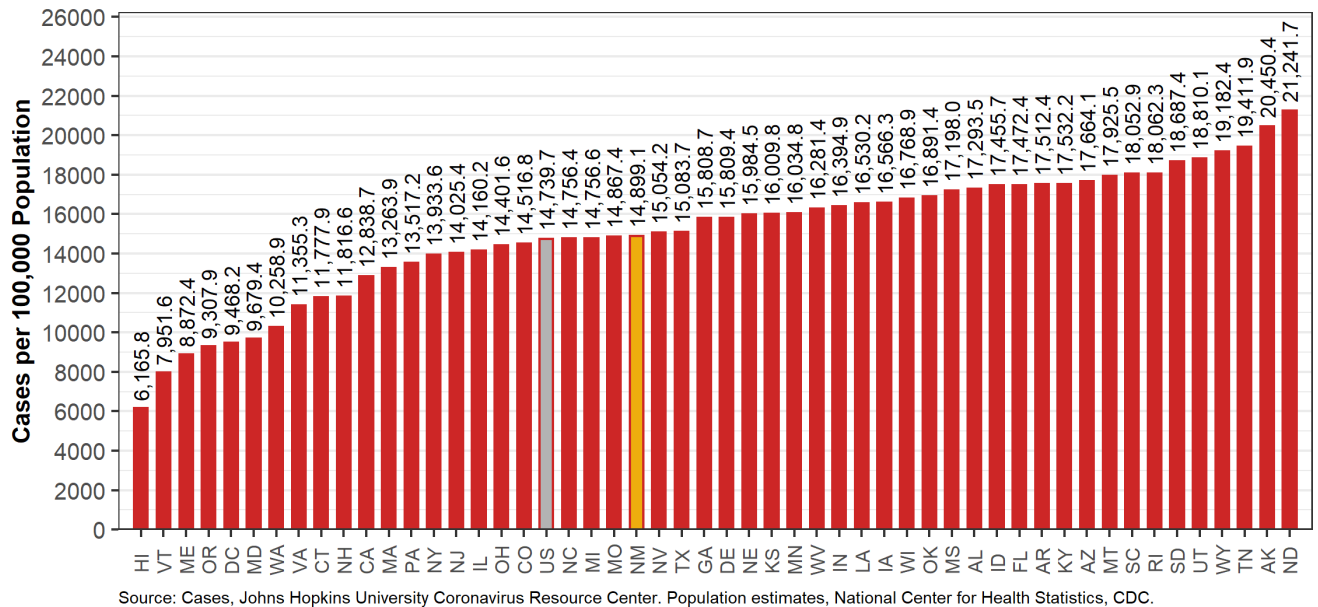


## Cumulative infection rate per 100,000 population by U.S. States



### Infection Rate: COVID19 Cases, Cumulative Year to Date, by U.S. States

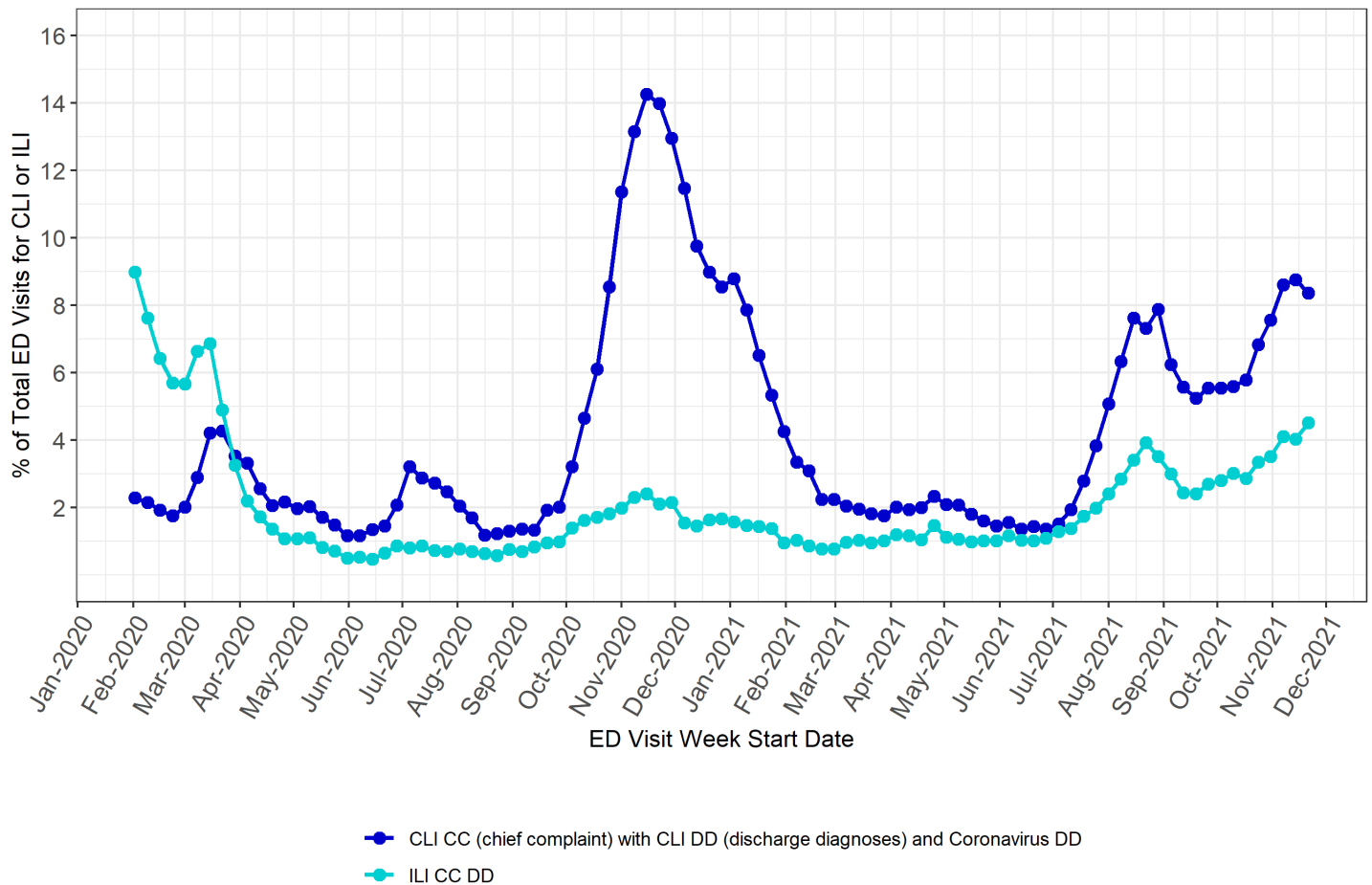
Data downloaded Tuesday, November 30, 2021



Note: Data updated 11/30/2021 and downloaded from <https://coronavirus.jhu.edu/>. For U.S. interstate comparisons, the methodology used here is slightly different than methodologies used in other NMDOH COVID-19 reports.

## Percentage of all emergency department (ED) visits that were Coronavirus-like illness (CLI) and Influenza-like illness (ILI) related

These visualizations are populated from data in New Mexico's Syndromic Surveillance Database. Initial patient encounter information is usually received within 24 hours, but clinical documentation is continuously being updated as it is identified throughout the patient encounter and hospital coding process.

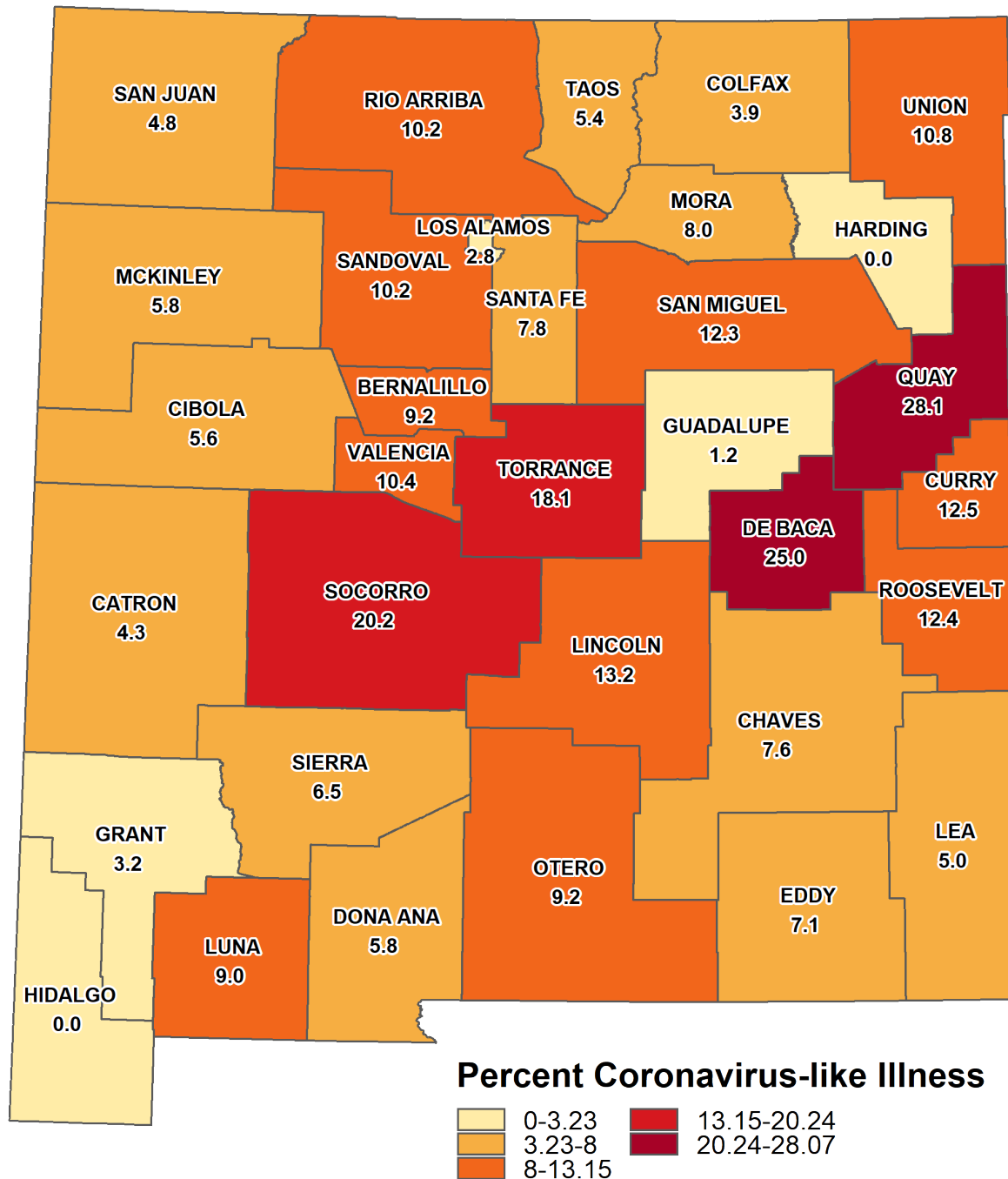


**CLI CC with CLI DD and Coronavirus DD** includes ED encounters with chief complaint consisting of fever and cough, shortness of breath, or difficulty breathing, while also including COVID-19 associated discharge diagnoses codes. The CLI definition excludes known influenza related ED visits coded with related influenza discharge diagnosis.

**ILI CCDD** includes ED encounters with chief complaint consisting of fever and cough, while also including ILI and influenza related discharge diagnoses.

**Percentage of all emergency department (ED) visits that were for Coronavirus-like illness (CLI)  
by New Mexico County  
(11/16 - 11/30)**

These visualizations are populated from data in New Mexico's Syndromic Surveillance Database. Initial patient encounter information is usually received within 24 hours, but clinical documentation is continuously being updated as it is identified throughout the patient encounter and hospital coding process.



## Cumulative number of cases and recovered cases by county

County	Cumulative cases	Cumulative Recovered
Bernalillo	85272	75574
Catron	254	211
Chaves	13639	12590
Cibola	4042	3665
Colfax	1594	1312
Curry	7819	7283
De Baca	318	248
Doña Ana	35349	30038
Eddy	11590	10761
Grant	3611	2681
Guadalupe	652	600
Harding	50	41
Hidalgo	630	572
Lea	13964	13324
Lincoln	3377	2985
Los Alamos	901	792
Luna	4464	3935
McKinley	16517	14592
Mora	395	361
Otero	8115	6806
Quay	1250	1018
Rio Arriba	5611	4949
Roosevelt	2979	2688
San Juan	26113	21357
San Miguel	2960	2616
Sandoval	18284	16020
Santa Fe	14635	13097
Sierra	1267	1026
Socorro	2027	1698
Taos	2801	2398
Torrance	1632	1403
Union	418	345
Valencia	10510	9183

## Data Sources

- **COVID-19 data**
  - **New Mexico Electronic Disease Surveillance System (NM-EDSS)**, Infectious Disease Epidemiology Bureau, Epidemiology and Response Division, New Mexico Department of Health.
  - **Salesforce/MTX COVID-19 Case Investigation Platform.**
- **Population Estimates:** University of New Mexico, Geospatial and Population Studies (GPS) Program.
- **Age-adjustment:** US 2000 Standard Population Weights
- **HealthData.gov:** <https://beta.healthdata.gov/National/COVID-19-Community-Profile-Report/gqxm-d9w9>
- **Coronavirus-like illness (CLI) and Influenza-like illness (ILI) related emergency department visits and admissions:** New Mexico's Syndromic Surveillance Database.

## Data Notes

- **The data reported in this weekly update may not match the daily numbers that are reported in the New Mexico Department of Health (NMDOH) press releases and/or the NMDOH COVID-19 data dashboard. This may be due to variation in the date and time of data extraction from NM-EDSS, corrections after quality assurance review, and differences in the exclusion criteria.**
- **New Mexico Electronic Disease Surveillance System (NM-EDSS).** Disease incidence data are derived from reports of notifiable infectious diseases. NMDOH relies on health care providers, laboratories, hospitals, clinics, institutions and individuals to report suspected and confirmed notifiable infectious diseases in accordance with New Mexico Administrative Code 7.4.3.13. Under-reporting can occur due to of lack of awareness about reporting requirements or lack of compliance with those requirements. Not all cases of infectious diseases can be detected for various reasons including lack of access to health care services, lack of laboratory testing or concerns about confidentiality. Specific and standardized national case definitions are used to classify disease reports by case status.
- **New Mexico Population Estimates.** All population estimates apply to July 1 of 2019. Estimates include decimal fractions. The sum of population subgroup estimates may not exactly equal the overall state population estimate due to rounding error. Population estimates for previous years are occasionally revised as new information becomes available. When publishing trend data, always be sure that your rates for earlier years match current rates on NM-IBIS that have been calculated with the most up-to-date population estimates.