

COVID-19 Variant of Concern (VOC) Case Report

January 24, 2022

Cases reported here include cases with specimens sequenced at the Scientific Laboratory Division (SLD), University of New Mexico, Centers for Disease Control and Prevention (CDC), Aegis, LabCorp, Fulgent, Gravity, and Helix Genetics.

Variants of concern (VOC) are defined by Centers for Disease Control and Prevention:

<https://www.cdc.gov/coronavirus/2019-ncov/cases-updates/variant-surveillance/variant-info.html>.

COVID-19 Genomic Surveillance

Monitoring COVID-19 variants is an important part of epidemiologic surveillance to track the accumulation of SARS-CoV-2 mutations, which naturally occur over time. As the virus evolves, many variants will emerge and be identified; however, only a small minority will be classified as variants being monitored (VBM), variants of interest (VOI), or variants of concern (VOC). Variants are classified in these groups depending on whether the new mutations cause changes in transmissibility (i.e., how well the virus spreads between people), disease severity, detection by current diagnostic tests, or ability to evade monoclonal antibody treatments, natural immunity, or vaccine-induced immunity. Only a small proportion of COVID-19 cases have been sequenced since readily available diagnostic tests do not test for specific variant strains and must be sent to a lab for sequencing. Genetic sequencing requires coordinated effort and time, therefore there is a lag time from specimen collection to reporting of approximately 3-4 weeks.

CDC is monitoring two VOCs currently in the US, Delta and Omicron. All other VOCs and VOIs are now classified as VBMs due to their low prevalence including Alpha, Beta, Gamma, Epsilon, Eta, Iota, Kappa, Zeta, and Mu. CDC designated B.1.1.529 (Omicron) a VOC on November 30, 2021. The first confirmed Omicron case was identified in NM December 12, 2021. To date, 642 confirmed cases of Omicron have been sequenced in NM. Delta represented approximately 67% of sequenced samples in New Mexico in the week of December 20, 2021. Sequenced specimens reported from December 27, 2021 to January 24, 2022 are incomplete but indicate a rising proportion of Omicron compared to other variants. CDC Nowcast predictive modeling forecasts Omicron to represent 99.9% of US positive cases the week of January 22, 2022.⁴ CDC currently classifies all AY sublineage variants in combination with B.1.617.2 as Delta, and all BA sublineage variants as Omicron. Studies indicate that vaccines and vaccine booster doses authorized for use in the US are effective at preventing transmission, severe illness, and death caused by VOCs and are the recommended measure to slow the emergence of new variants. Beginning August 20, 2021, NMDOH reinstated wearing masks in all indoor public settings to slow the spread of emerging variants of COVID-19.

NM COVID-19 Variant Epidemiologic Interpretation

CDC VARIANTS OF CONCERN (VOC)			
Name	First Identified	Attributes ¹	New Mexico ²
Delta (B.1.617.2 and AY sublineages)	India	-Increased transmissibility -May reduce effectiveness of antibody treatments -May cause more severe illness in unvaccinated persons -May reduce natural and vaccine immunity	-Since 6/28/21, Delta has remained the dominant variant, and represented 94% of sequences reported on 12/13/21. -Proportion of deaths is currently 2%.
Omicron (B.1.1.529 and BA sublineages)	South Africa	-May increase transmissibility -May reduce effectiveness of antibody treatments -May reduce natural and vaccine immunity	-First case observed in NM 12/12/21. - To date, 642 confirmed cases of Omicron have been sequenced in NM.

CDC VARIANTS BEING MONITORED (VBM)			
Name³	First Identified	Attributes¹	New Mexico²
Alpha (B.1.1.7 and Q lineages)	United Kingdom	-50% more transmissible -Potential to cause more severe cases and deaths	-Alpha has proportionally declined from 78% the week of 5/24/21 to 3% of samples collected the week of 7/19/21. -Has not been observed in NM since 8/16/21.
Beta (B.1.351 and descendent lineages)	South Africa	-50% more transmissible -Reduced effectiveness of antibody treatments -Reduced response of natural and vaccine induced immunity	- Least reported VOC in NM. -Has not been observed in NM since 7/19/21.
Gamma (P.1 and descendent lineages)	Japan/Brazil	-Reduced effectiveness of some antibody treatments -Reduced response of natural and vaccine immunity	-First case sequenced in NM the week of 3/22/21 and has not been observed since 8/9/2021; Gamma peaked at 10% of sequenced NM specimens the week of 6/21/2021. -Currently has the highest proportion of hospitalizations (23%); oversampling of severe cases may skew these results.
Epsilon (B.1.427, and B.1.429)	California	-Downgraded from a VOI on September 21, 2021	-First case sequenced in NM the week of 10/12/20 and has not been observed since 6/7/21; Epsilon peaked at 26% of sequenced NM specimens the week of 3/15/21.
Iota (B.1.526)	U.S.	-Downgraded from a VOI on September 21, 2021	-First case sequenced in NM the week of 2/08/21 and has not been observed since 6/28/21; Iota peaked at 15% of sequenced NM specimens the week of 5/10/21
Mu (B.1.621, and B.1.621.1)	Colombia	-Designated a VBM on September 21, 2021	-First case sequenced in NM the week of 5/24/21 and has not been observed since 8/16/21; Mu peaked at 7% of sequenced NM specimens the week of 6/7/21.

¹<https://www.cdc.gov/coronavirus/2019-ncov/variants/variant-info.html>

²NM interpretations based on data collected >4 weeks ago to allow for lag in genomic sequencing.

³All other VBMs have either not been observed in NM or have had <10 sequenced specimens and are not included in this table.

⁴[CDC COVID Data Tracker](#)

Cumulative number of Specimens Sequenced and Matched to Case Investigations

Lineage	Sequenced Cases	Matched Cases*	Percent Matched
B.1.617.2 (Delta)	11724	10238	87%
B.1.1.529 (Omicron)	642	364	57%
B.1.1.7 (Alpha)	1835	1532	83%
B.1.351 (Beta)	8	3	38%
P.1 (Gamma)	109	94	86%
B.1.427/B.1.429 (Epsilon)	521	429	82%
B.1.525 (Eta)	4	4	100%
B.1.526 (Iota)	191	162	85%
B.1.617.1 (Kappa)	2	2	100%
P.2 (Zeta)	3	2	67%
B.1.621/B.1.621.1 (Mu)	38	29	76%
Other lineage	4490	3227	72%
Total	19567	16086	82%

*Cases are matched to NMDOH case investigation data to provide demographic, disease outcome, and other clinical information. This table includes 208 sequences from patients who were tested at New Mexico facilities but reside outside New Mexico. These have been removed from the subsequent tables and figures.

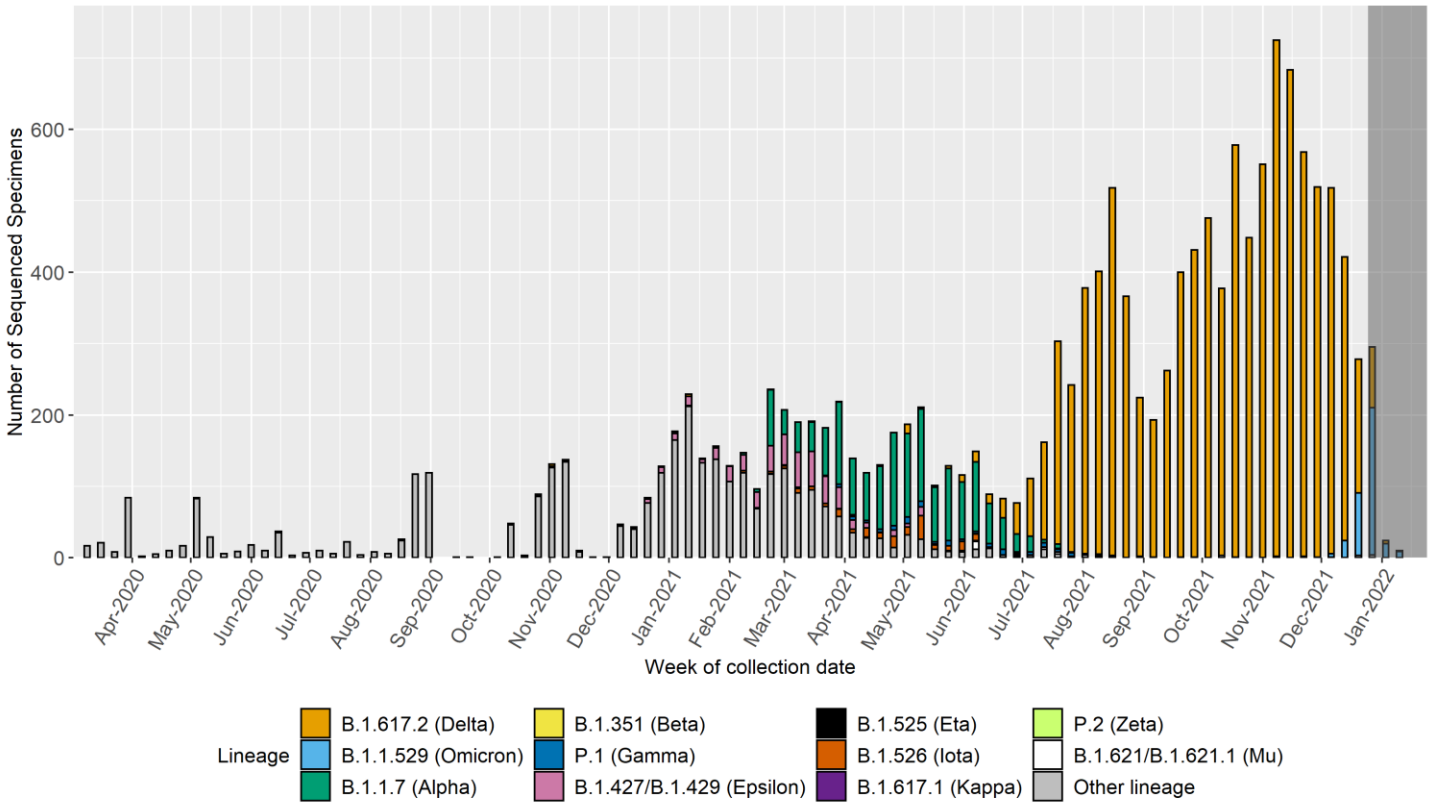
Cumulative number of variant cases, hospitalizations, and deaths

Lineage	Total Cases	Number Hospitalized	Percent Hospitalized	Number Died	Percent Died	Vaccine Breakthrough Cases*
Delta	10154	896	9%	219	2%	573
Omicron	361	1	0%	0	0%	9
Alpha	1519	150	10%	18	1%	40
Beta	3	0	0%	0	0%	0
Gamma	92	21	23%	2	2%	1
Epsilon	418	9	2%	2	0%	0
Eta	4	0	0%	0	0%	0
Iota	160	5	3%	1	1%	4
Kappa	2	0	0%	0	0%	0
Zeta	2	0	0%	0	0%	0
Mu	29	1	3%	0	0%	2
Other lineage	3134	205	7%	65	2%	9

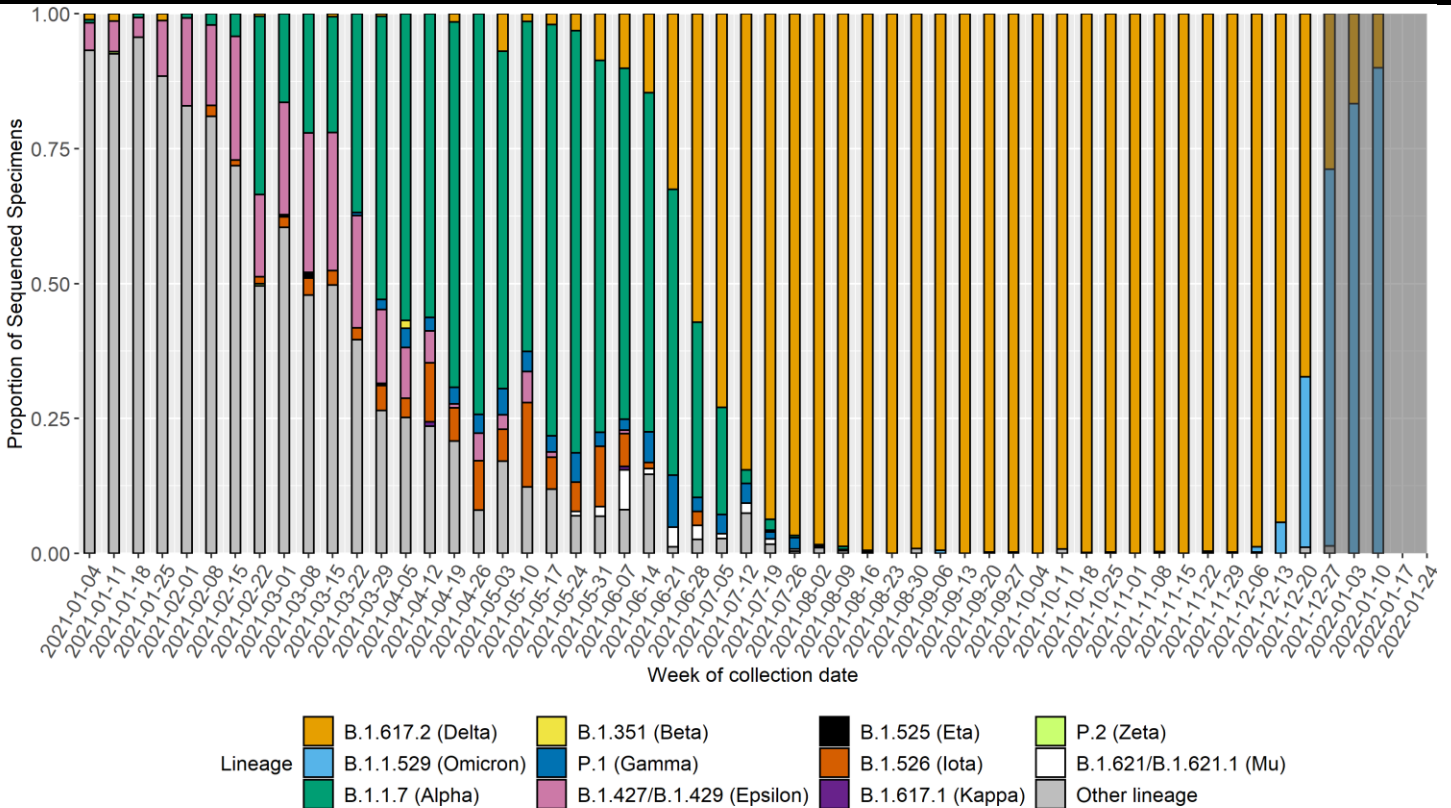
*A vaccine breakthrough (VBT) case is defined as a person who tests positive ≥ 14 days after completing the full series of an FDA-authorized COVID-19 vaccine and has not tested positive the prior 89 days. *Because samples collected from VBT cases are more frequently sequenced compared to samples from other COVID-19 cases, these counts should not be used to evaluate the frequency with which VOCs cause vaccine breakthrough.*

**The specimen submission process for sequencing is not representative. A large proportion of P.1 (Gamma) cases were collected from a single hospital in San Juan County that submitted specimens on hospital admissions, rather than on a representative set of cases in the county. This is likely increasing the apparent severity of this VOC.

Identified SARS-CoV-2 lineages by week

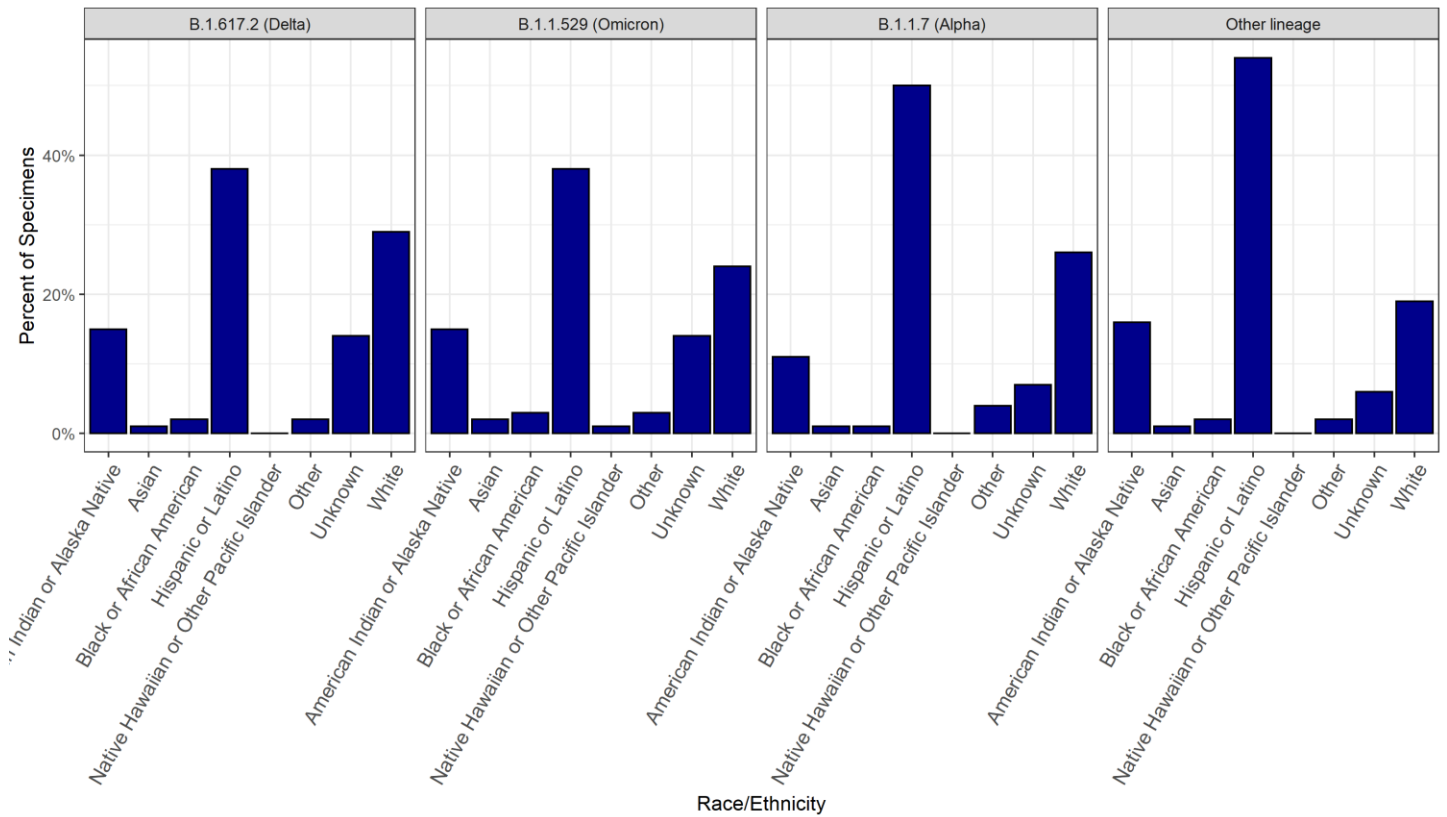


Proportion of identified SARS-CoV-2 lineages by week

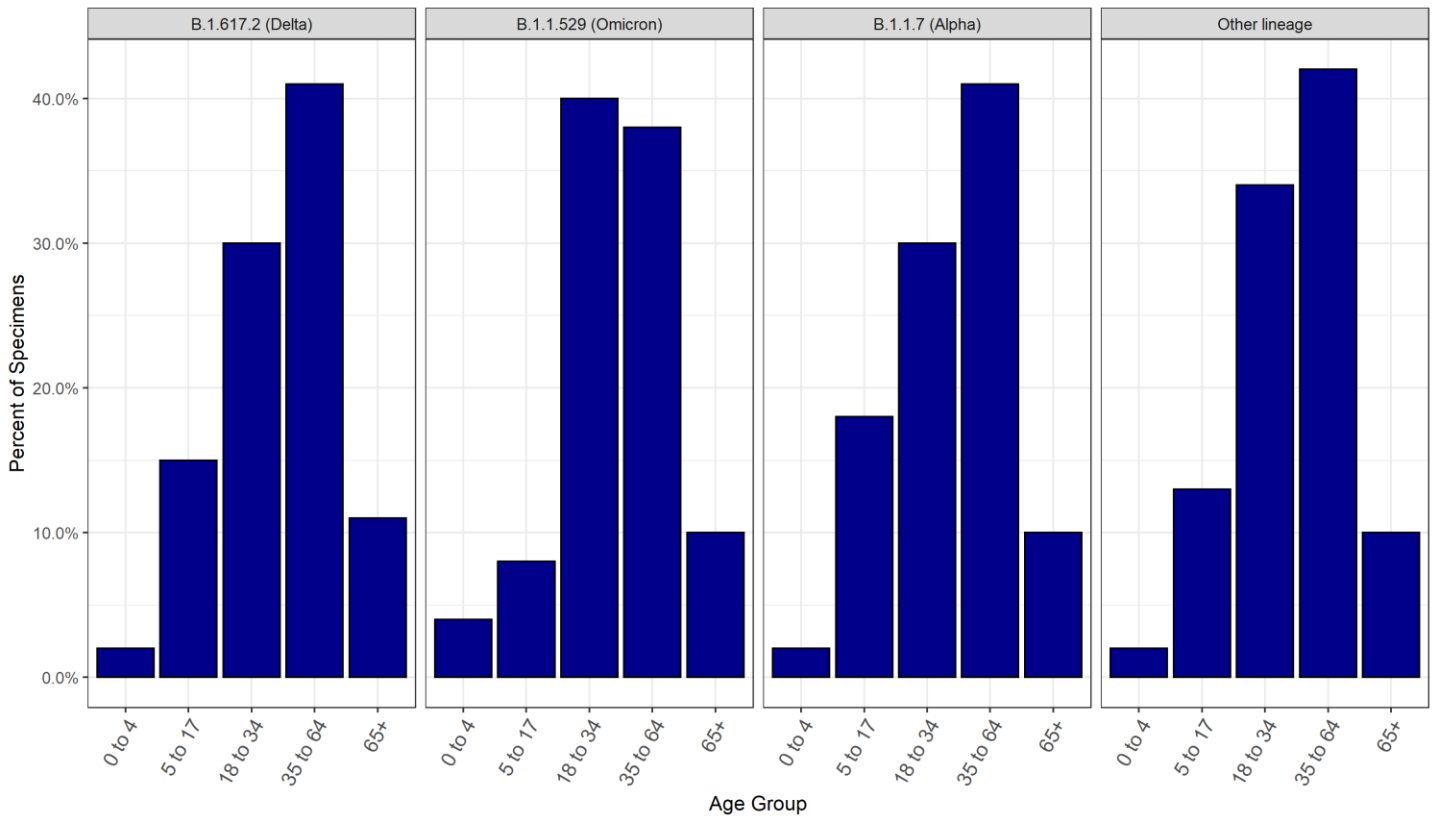


*The dark grey shaded region in each of the figures on this page represents the lag period between specimen collection and genomic sequencing results such that the results may look different when all specimens available for sequencing have been reported.

Cumulative proportion of variant cases by Race/Ethnicity



Cumulative proportion of variant cases by Age Group



*Only VOCs with greater than 100 sequenced specimens in NM are reported and excludes all VBMs other than Alpha.

Cumulative number of variant cases by county of residence*

Counties with less than 5 matched sequenced cases are not included in the table below.

County	B.1.1.529 (Omicron)	B.1.617.2 (Delta)	B.1.1.7 (Alpha)	Other lineage
Bernalillo	135	3295	443	1047
Chaves	6	211	13	59
Cibola	6	197	13	108
Colfax	1	131	24	26
Curry	0	121	23	28
Dona Ana	42	741	81	425
Eddy	2	268	19	97
Grant	15	80	13	34
Guadalupe	0	62	1	19
Lea	3	139	16	114
Lincoln	2	46	5	57
Los Alamos	0	45	9	24
Luna	0	42	15	21
McKinley	13	314	19	127
Otero	23	674	24	150
Rio Arriba	3	141	92	39
San Juan	38	1503	311	294
San Miguel	5	104	10	55
Sandoval	18	586	73	230
Santa Fe	28	515	96	295
Sierra	0	102	5	5
Socorro	0	53	9	31
Taos	2	120	16	39
Torrance	0	121	16	22
Valencia	16	422	70	118

*Only VOCs with greater than 100 sequenced specimens in NM are reported and excludes all VBMs other than Alpha.

Percentage of variant cases reporting any symptoms

Lineage	Total	Total Investigated (%)	No	Yes	Symptomatic (%)
B.1.1.529 (Omicron)	361	46 (13%)	5	41	89%
B.1.617.2 (Delta)	10147	4030 (40%)	247	3783	94%
B.1.1.7 (Alpha)	1519	1153 (76%)	103	1050	91%
Other lineage	3599	2781 (77%)	392	2389	86%

Percentage of specific symptoms reported by symptomatic variant cases

The table below includes data ONLY from symptomatic cases.

Symptom	B.1.1.529 (Omicron)	B.1.617.2 (Delta)	B.1.1.7 (Alpha)	Other lineage
Fever (Measured or Subjective)	37% (15)	53% (1963)	47% (481)	43% (1010)
Chills	49% (20)	48% (1778)	46% (471)	44% (1046)
Muscle Aches	51% (21)	55% (2052)	57% (584)	56% (1314)
Runny Nose	78% (32)	55% (2042)	53% (547)	53% (1254)
Sore Throat	68% (28)	44% (1640)	45% (465)	42% (997)
Cough	73% (30)	74% (2778)	73% (759)	64% (1506)
Shortness of Breath	17% (7)	31% (1149)	29% (303)	24% (568)
Nausea/Vomiting	24% (10)	27% (1004)	27% (280)	23% (533)
Headache	71% (29)	64% (2397)	66% (682)	65% (1532)
Abdominal Pain	12% (5)	14% (530)	15% (160)	14% (326)
Diarrhea	17% (7)	29% (1095)	29% (295)	26% (619)
Fatigue	68% (28)	67% (2511)	70% (724)	66% (1547)
Loss of Appetite	29% (12)	39% (1474)	40% (414)	36% (845)
Loss of Taste or Smell	32% (13)	48% (1809)	40% (409)	44% (1029)

*Only VOCs with greater than 100 sequenced specimens in NM are reported and excludes all VBMs other than Alpha.

Percentage of variant cases reporting underlying conditions

Lineage	Total	Total Investigated (%)	No	Yes	Underlying Conditions (%)
B.1.1.529 (Omicron)	361	45 (13%)	41	4	9%
B.1.617.2 (Delta)	10147	3860 (38%)	2906	954	25%
B.1.1.7 (Alpha)	1519	1147 (76%)	591	556	49%
Other lineage	3599	2695 (74%)	1653	1042	39%

Percentage of specific underlying conditions reported by variant cases

Data below includes ONLY cases who report having a pre-existing condition.

Symptom	B.1.1.529 (Omicron)	B.1.617.2 (Delta)	B.1.1.7 (Alpha)	Other lineage
Chronic Lung Disease	0% (0)	24% (187)	25% (127)	26% (243)
Chronic Liver Disease	0% (0)	5% (37)	3% (17)	4% (38)
Chronic Renal Disease	0% (0)	12% (90)	4% (18)	5% (43)
Diabetes Mellitus	0% (0)	35% (270)	19% (95)	22% (201)
Cardiovascular Disease	25% (1)	36% (276)	32% (160)	28% (261)
Autoimmune Disease	0% (0)	6% (46)	8% (40)	5% (45)
Neurological Disability	0% (0)	8% (61)	6% (31)	9% (81)
Current or Former Smoker	75% (3)	38% (291)	53% (268)	51% (466)

* Note: One P.1 variant case reported an underlying condition that is not included on the list above.

**Only VOCs with greater than 100 sequenced specimens in NM are reported and excludes all VBMs other than Alpha.

Data Sources

- **COVID-19 data**
 - **New Mexico Electronic Disease Surveillance System (NM-EDSS)**, Infectious Disease Epidemiology Bureau, Epidemiology and Response Division, New Mexico Department of Health.
 - **Salesforce/MTX COVID-19 Case Investigation Platform.**
- **Sequencing data**
 - New Mexico Department of Health (NMDOH) receives sequencing data for specimens sequenced at the NMDOH Scientific Laboratory Division (SLD), University of New Mexico, Centers for Disease Control and Prevention (CDC), Aegis, LabCorp, Fulgent Genetics, Gravity, and Helix Genetics.
- **Variants of concern (VOC)** are defined by Centers for Disease Control and Prevention:
<https://www.cdc.gov/coronavirus/2019-ncov/cases-updates/variant-surveillance/variant-info.html>.
- **CDC COVID Data Tracker** [CDC COVID Data Tracker](#)

Data Notes

- **The data reported in this weekly update may not match the daily numbers that are reported in the New Mexico Department of Health (NMDOH) press releases and/or the NMDOH COVID-19 data dashboard. This may be due to variation in the date and time of data extraction from NM-EDSS, corrections after quality assurance review, and differences in the exclusion criteria.**
- **New Mexico Electronic Disease Surveillance System (NM-EDSS).** Disease incidence data are derived from reports of notifiable infectious diseases. NMDOH relies on health care providers, laboratories, hospitals, clinics, institutions, and individuals to report suspected and confirmed notifiable infectious diseases in accordance with New Mexico Administrative Code 7.4.3.13. Under-reporting can occur due to lack of awareness about reporting requirements or lack of compliance with those requirements. Not all cases of infectious diseases can be detected for various reasons including lack of access to health care services, lack of laboratory testing or concerns about confidentiality. Specific and standardized national case definitions are used to classify disease reports by case status.
- **Race/Ethnicity.** Race/Ethnicity are reported as a single variable according to the selection of the case. Any case who is Hispanic is in the Hispanic category and all other races are non-Hispanic.