

# COVID THERAPEUTICS FOR OUTPATIENTS AT HIGH RISK OF SEVERE COVID-19

## Quick Reference for Prescribers

### What therapeutic options are available for COVID positive patients?

Therapeutic	Reduction In hospitalization & death	Route	Treatment Initiation from Symptom Onset	Treatment Duration	OMASS Requirement	Considerations	Preference
<b>Paxlovid (Nirmatrelvir/ Ritonavir)</b> 300mg/100mg po BID x 5days	88%	Oral	Within 5 days	5 days	Score 3+	Patients age 12+ and ≥ 40kg Multiple drug interactions Adjust dosing for renal impairment Not recommended in severe hepatic impairment	<b>1<sup>st</sup> Tier</b>
<b>Remdesivir</b>	87%	IV	Within 7 days	3 days (1-2 hr)	Score 3+	Patients ≥ 3.5kg Renal and hepatic considerations	<b>1<sup>st</sup> Tier</b>
<b>Sotrovimab</b>	85%	IV	Within 10 days	30 minutes	Score 3+	Patients age 12+ and ≥ 40kg	<b>2<sup>nd</sup> Tier</b> Reserve use for those whom: Paxlovid & Remdesivir are contraindicated or unavailable Outside treatment window for Paxlovid & Remdesivir
<b>Molnupiravir</b> 200mg 4 tabs po BID x 5 days	30%	Oral	Within 5 days	5 days	Score 1+	Patients age 18+ Not recommended in pregnancy Contraceptive recommendations for males and females.	<b>3<sup>rd</sup> Tier</b> Utilize for OMASS 3+ only if other treatment options are unavailable

### How do I know when the patient eligibility criteria have changed?

Check the link below for the current prescribing criteria. They will expand to include all patients eligible under the EUA as supply increases. <https://cv.nmhealth.org/providers/covid-19-oral-therapeutics-information-for-providers/>

### How do I prescribe oral therapeutics?

- Check the list of participating pharmacy locations and inventory status.
- Please include date of symptom onset and OMASS score. It helps the pharmacy staff when processing prescriptions.
- **Ask patients to go through the drive-thru to minimize exposure to pharmacy staff and customers.**

### Which pharmacies have oral therapeutics?

Check the link below for a list of participating pharmacies. Location and inventory status are updated daily.

<https://cv.nmhealth.org/providers/covid-19-oral-therapeutics-information-for-providers/>

Community Walgreens #16544 will overnight medications to a patient's home or preferred pick-up location. Community is open Monday-Friday. Weekend orders after Friday at 4pm must be sent to a drive-thru location.

QUESTIONS? EMAIL [COVID.THERAPEUTICS@STATE.NM.US](mailto:COVID.THERAPEUTICS@STATE.NM.US)

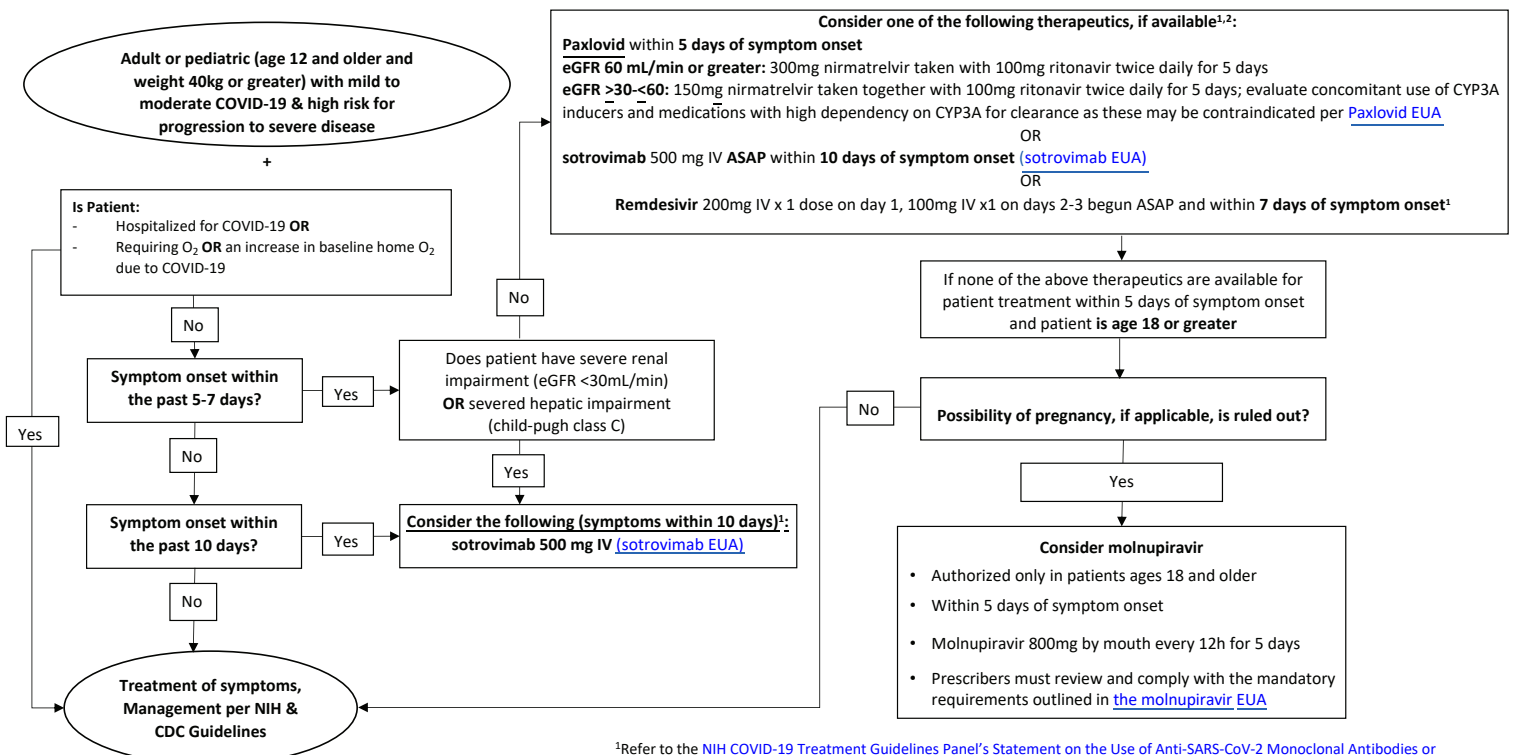
For more information, visit [CV.NMHEALTH.ORG](https://CV.NMHEALTH.ORG) and click on the provider information tab



## Oral Antiviral & Monoclonal Antibody Screening Score (OMASS)

adapted from Mayo Clinic's published Monoclonal Antibody Screening Score (MASS)

RISK FACTOR	POINTS
Age 65 years and older	2
BMI 35 kg/m <sup>2</sup> and higher	2
Diabetes mellitus	2
Chronic kidney disease	3
Cardiovascular disease in a patient 55 years and older	2
Chronic respiratory disease in a patient 55 years and older	3
Hypertension in a patient 55 years and older	1
Immunosuppressed and unlikely to have responded to vaccines (eg: CD20 inhibitors, BTK inhibitors, campath, recent CAR-T, organ transplant)	3
Pregnancy	4
BIPOC (Black, Indigenous, People of Color) status	1
Any other underlying medical condition associated with high risk for severe COVID-19 disease according to the CDC	1



**Limited use of bamlanivimab/etesevimab and REGEN-COV as they are not expected to be active against the Omicron variant<sup>1</sup>**

December 30, 2021

<sup>1</sup>Refer to the [NIH COVID-19 Treatment Guidelines Panel's Statement on the Use of Anti-SARS-CoV-2 Monoclonal Antibodies or Remdesivir for the Treatment of Covid-19 in Nonhospitalized patients when Omicron is the Predominant Circulating Variant](#); Remdesivir is only approved for hospitalized individuals with COVID-19. Outpatient treatment is based on information from the literature ([Dec 22, 2021 Early Remdesivir to Prevent Progression to Severe Covid-19 in Outpatients](#); DOI: 10.1056/NEJMoa2116846) <sup>2</sup> COVID-19 convalescent plasma with high titers of anti-SARS-CoV-2 antibodies is authorized for the treatment of COVID-19 in patients with immunosuppressive disease in either the outpatient or inpatient setting ([COVID-19 Convalescent Plasma EUA](#))