

# COVID-19 Pediatric Case Report

January 17, 2022

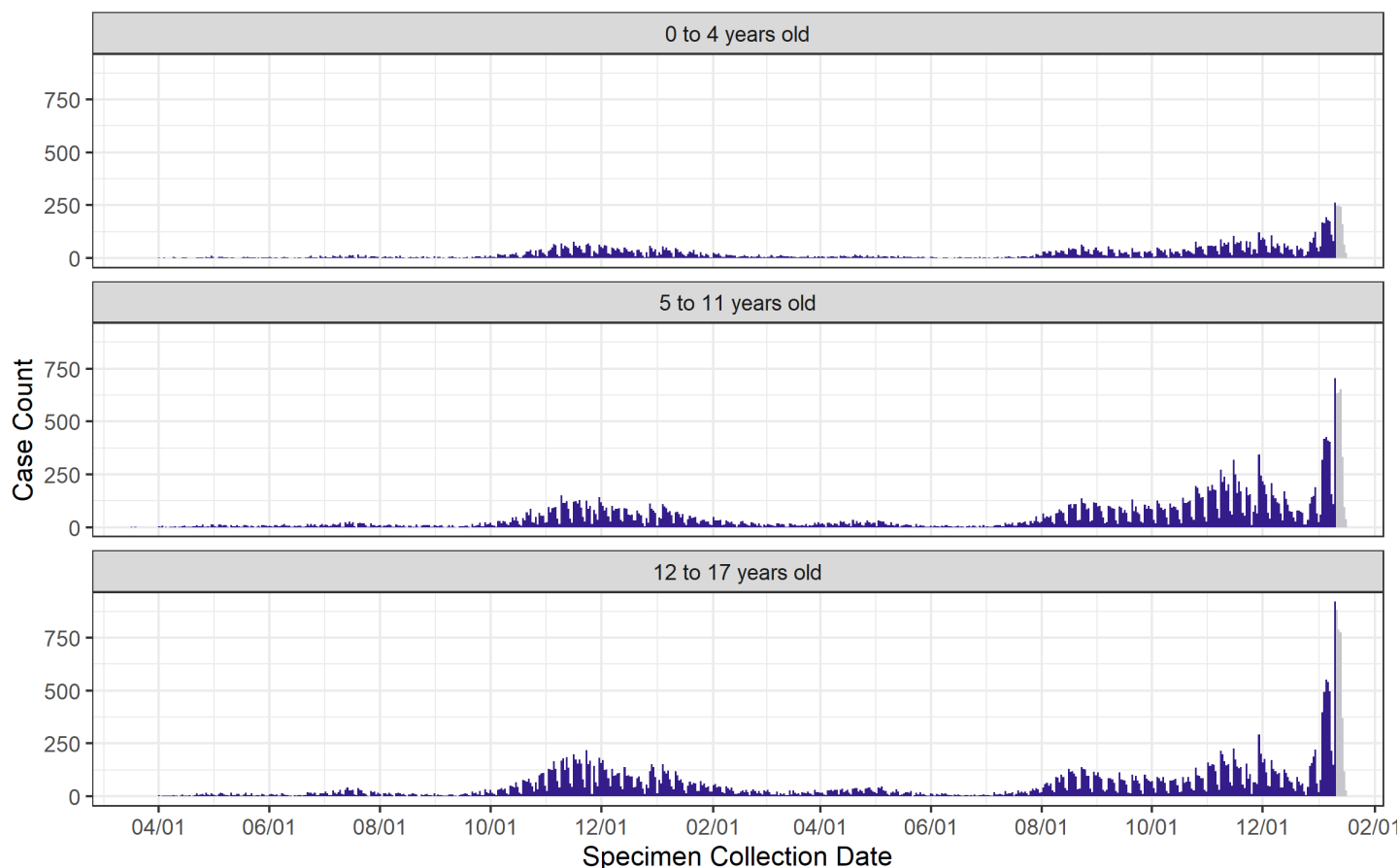
Unless stated otherwise, all data reported here exclude cases who are from out-of-state and cases who are detainees in Federal Immigration and Customs Enforcement (ICE) facilities.

| Total number of pediatric cases<br>(% of cases that are pediatric) | Number of pediatric cases in the last 7 days<br>(% of cases in the last 7 days that are pediatric) |
|--|--|
| 80100 (19.0%)  | 10650 (27.2%)  |

## SECTION 1: PEDIATRIC CASE DEMOGRAPHICS

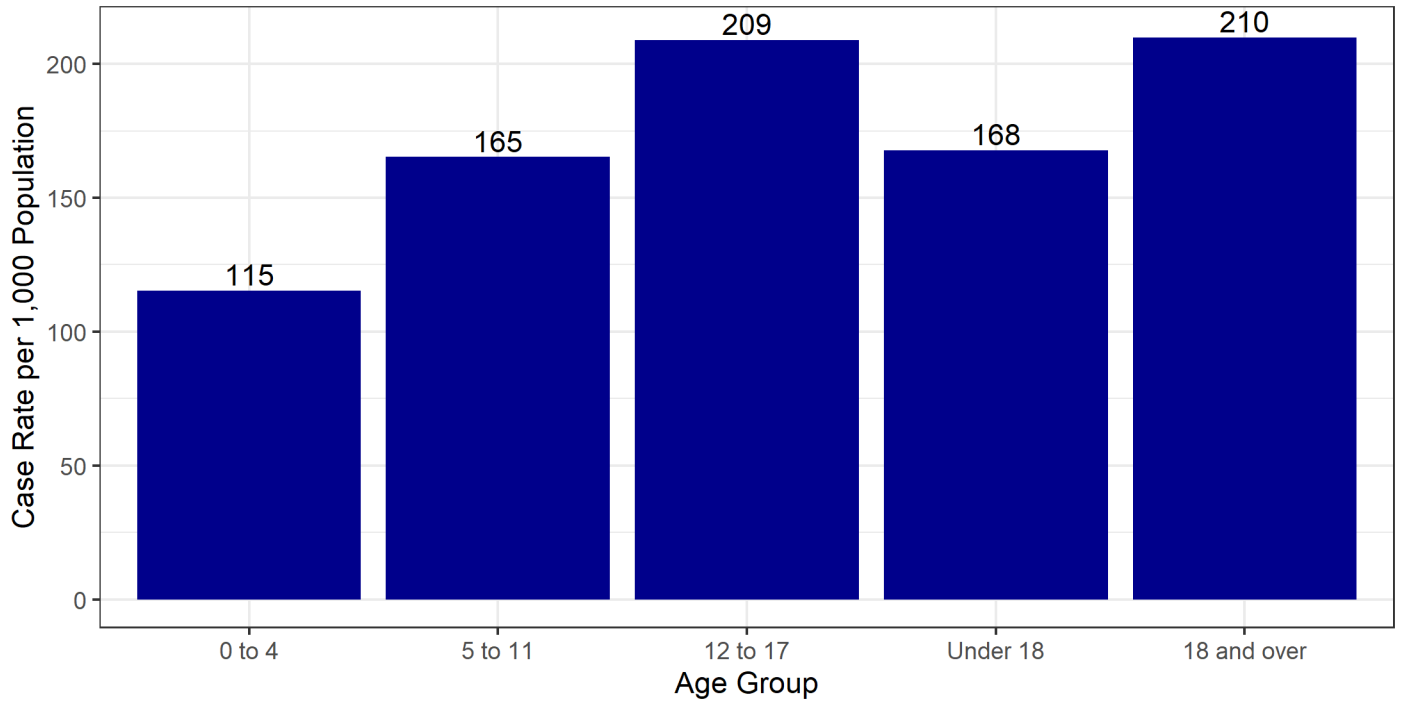
### Pediatric case count over time

Pediatric Case Count over Time



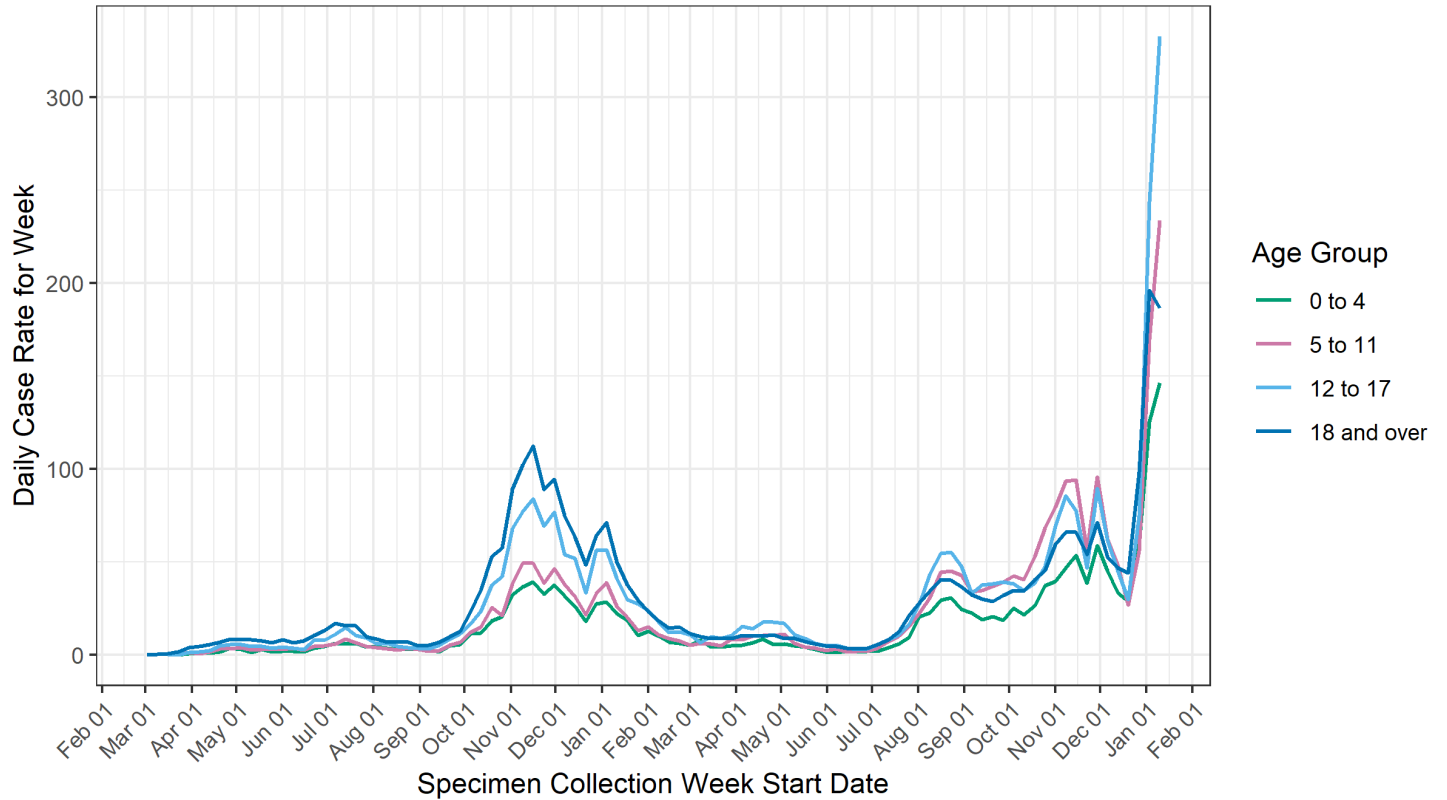
Previous 7 days are greyed out. Positive samples collected during this time may not yet be reported.

### Pediatric case rate per 1,000 population by age group



| Age Group   | Number of Cases | Percent of Cases | Cases per 1,000 | Ratio of 18 and Over to Age Group |
|-------------|-----------------|------------------|-----------------|-----------------------------------|
| 0 to 4      | 14028           | 3.3              | 115.3           | 0.5                               |
| 5 to 11     | 31209           | 7.4              | 165.2           | 0.8                               |
| 12 to 17    | 34863           | 8.3              | 209.0           | 1.0                               |
| Under 18    | 80100           | 19.0             | 167.8           | 0.8                               |
| 18 and over | 341202          | 81.0             | 209.9           | 1.0                               |

## Daily pediatric case rate per 100,000 population by age group

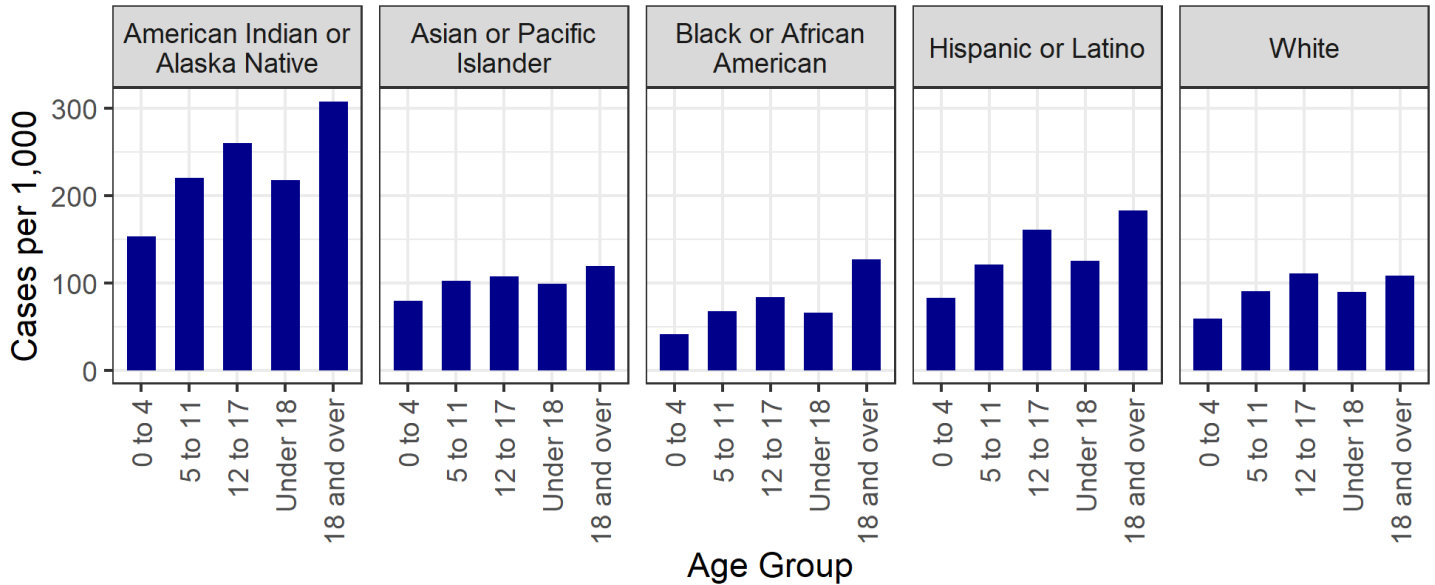


Tests collected in the last ten days may not yet have results. Recent case rates will change as these tests are processed.

## Pediatric cases by sex and age

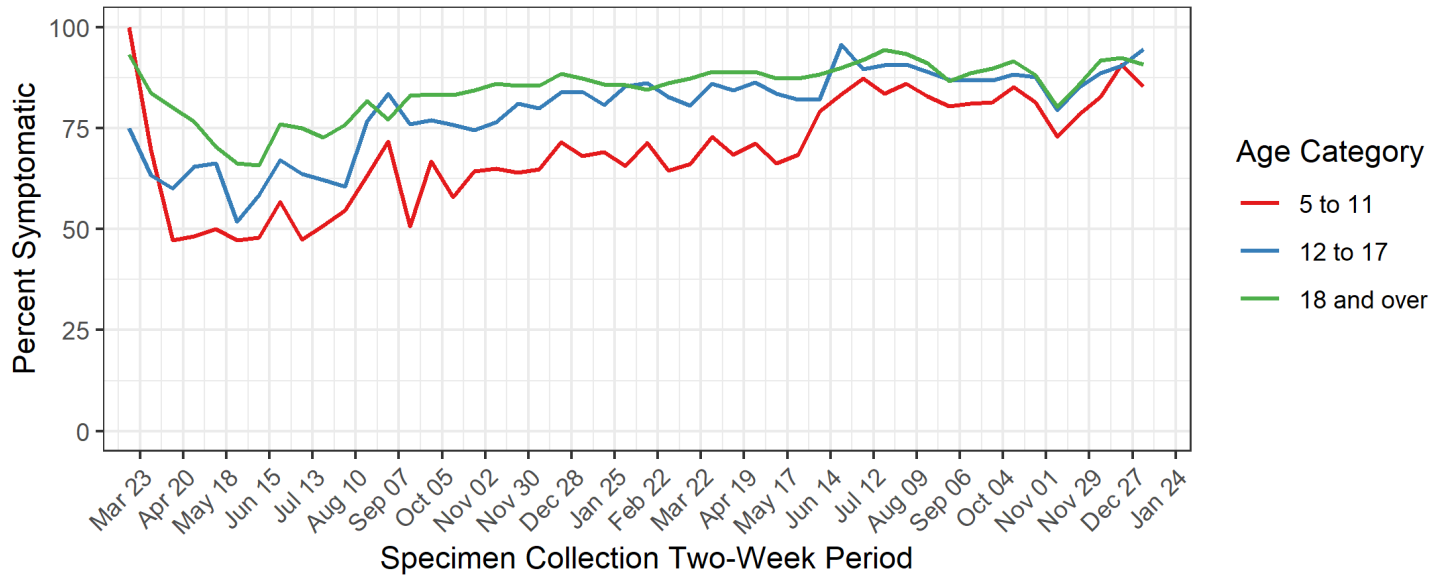
| Sex    | Age Group   | Cases  | Percent of Cases within Gender | Cases per 1,000 Population |
|--------|-------------|--------|--------------------------------|----------------------------|
| Female | 0 to 4      | 6662   | 3.0                            | 111.9                      |
|        | 5 to 11     | 15070  | 6.9                            | 162.9                      |
|        | 12 to 17    | 17684  | 8.1                            | 215.2                      |
|        | Under 18    | 39416  | 18.0                           | 168.3                      |
|        | 18 and over | 179053 | 82.0                           | 216.3                      |
| Male   | 0 to 4      | 7132   | 3.6                            | 114.8                      |
|        | 5 to 11     | 15673  | 8.0                            | 162.7                      |
|        | 12 to 17    | 16615  | 8.5                            | 196.2                      |
|        | Under 18    | 39420  | 20.1                           | 162.1                      |
|        | 18 and over | 156770 | 79.9                           | 196.6                      |

## Rates per 1,000 population of cases by age in each race/ethnicity group



| Race                             | Age Group   | Cases  | Percent | Rate per 1,000 |
|----------------------------------|-------------|--------|---------|----------------|
| American Indian or Alaska Native | 0 to 4      | 1907   | 3.5     | 153.3          |
|                                  | 5 to 11     | 4521   | 8.3     | 220.7          |
|                                  | 12 to 17    | 4740   | 8.7     | 260.1          |
|                                  | Under 18    | 11168  | 20.6    | 218.3          |
|                                  | 18 and over | 43063  | 79.4    | 308.4          |
| Asian or Pacific Islander        | 0 to 4      | 134    | 3.1     | 79.2           |
|                                  | 5 to 11     | 265    | 6.2     | 102.8          |
|                                  | 12 to 17    | 266    | 6.2     | 107.9          |
|                                  | Under 18    | 665    | 15.5    | 98.8           |
|                                  | 18 and over | 3622   | 84.5    | 119.6          |
| Black or African American        | 0 to 4      | 131    | 2.5     | 41.1           |
|                                  | 5 to 11     | 336    | 6.3     | 68.0           |
|                                  | 12 to 17    | 317    | 5.9     | 83.6           |
|                                  | Under 18    | 784    | 14.7    | 65.8           |
|                                  | 18 and over | 4545   | 85.3    | 127.2          |
| Hispanic or Latino               | 0 to 4      | 6096   | 3.5     | 83.1           |
|                                  | 5 to 11     | 13859  | 8.0     | 121.5          |
|                                  | 12 to 17    | 16155  | 9.3     | 160.7          |
|                                  | Under 18    | 36110  | 20.8    | 125.4          |
|                                  | 18 and over | 137125 | 79.2    | 183.4          |
| White                            | 0 to 4      | 1845   | 2.2     | 59.5           |
|                                  | 5 to 11     | 4247   | 5.1     | 90.7           |
|                                  | 12 to 17    | 4624   | 5.5     | 110.6          |
|                                  | Under 18    | 10716  | 12.8    | 89.6           |
|                                  | 18 and over | 72701  | 87.2    | 108.2          |

## Percent of school-aged pediatric cases with symptoms by age group



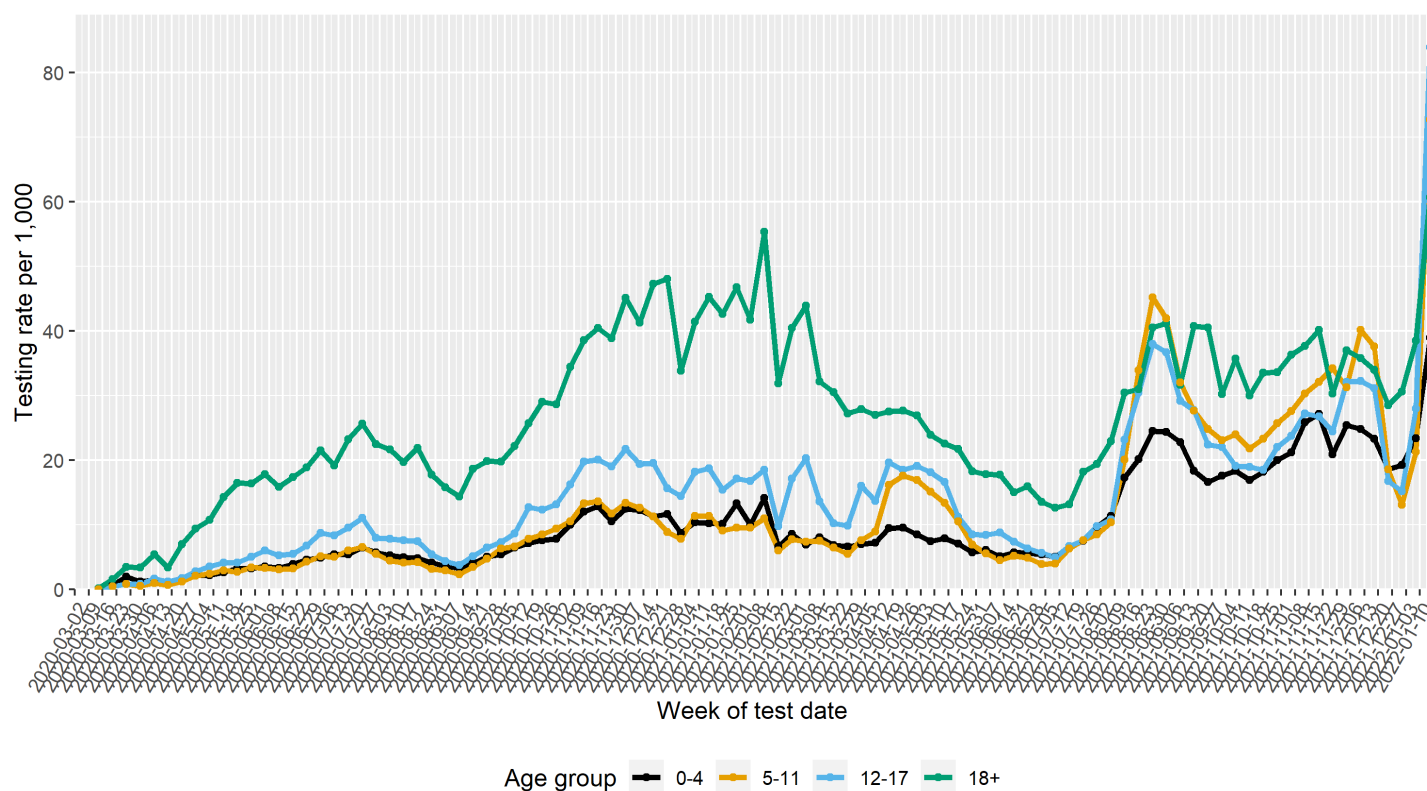
## SECTION 2: PEDIATRIC TESTING RATES AND POSITIVITY

### Cumulative testing rates per 1,000 population and test positivity by age group

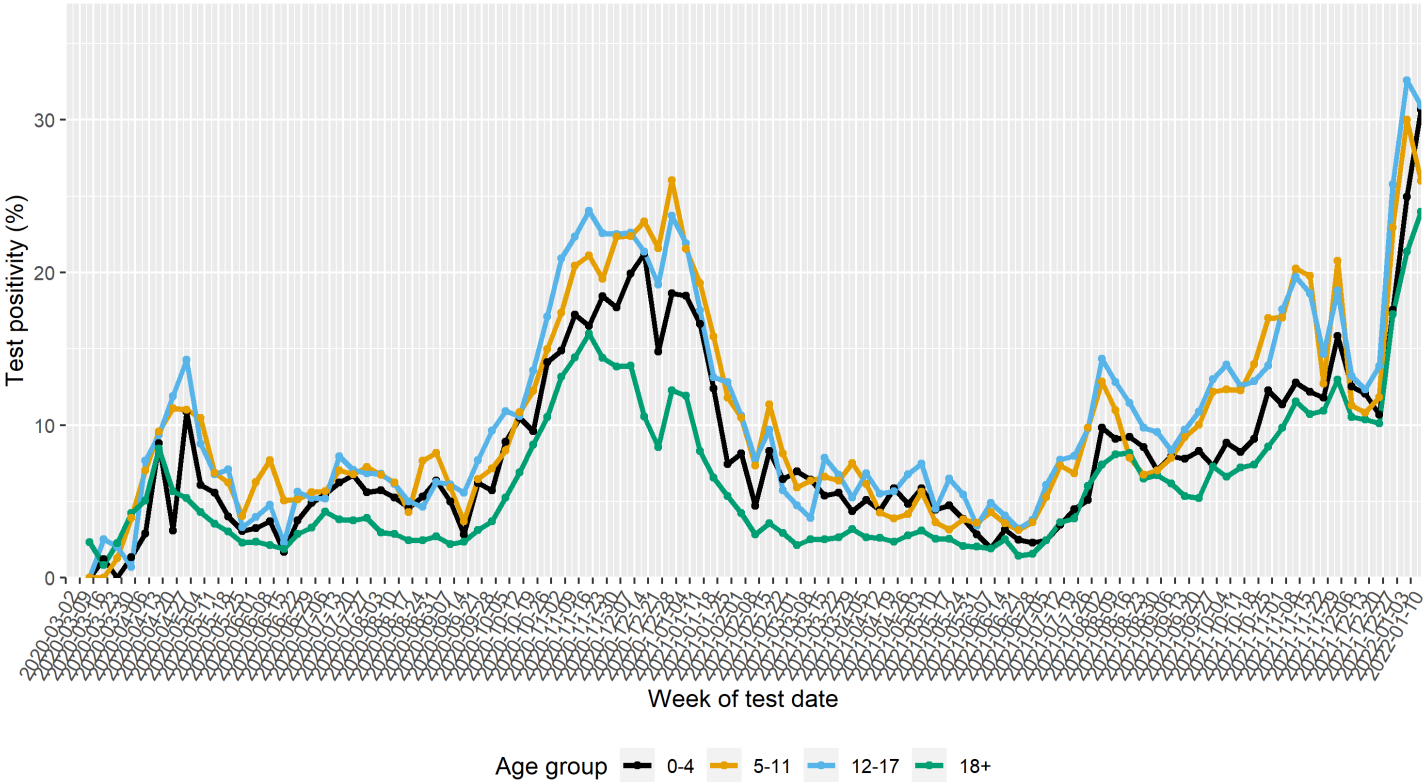
Tests include PCR and antigen

| Age Group (years) | Total Number of Cases | Cumulative tests per 1,000 population | Cumulative test positivity (%) |
|-------------------|-----------------------|---------------------------------------|--------------------------------|
| <b>0-4</b>        | 14057                 | 990.4                                 | 10.9%                          |
| <b>5-11</b>       | 31297                 | 1211.3                                | 12.8%                          |
| <b>12-17</b>      | 34999                 | 1417.8                                | 13.7%                          |
| <b>18+</b>        | 338414                | 2615.3                                | 7.3%                           |

### Testing rates per 1,000 population by age group by week



Test positivity (%) by age group by week





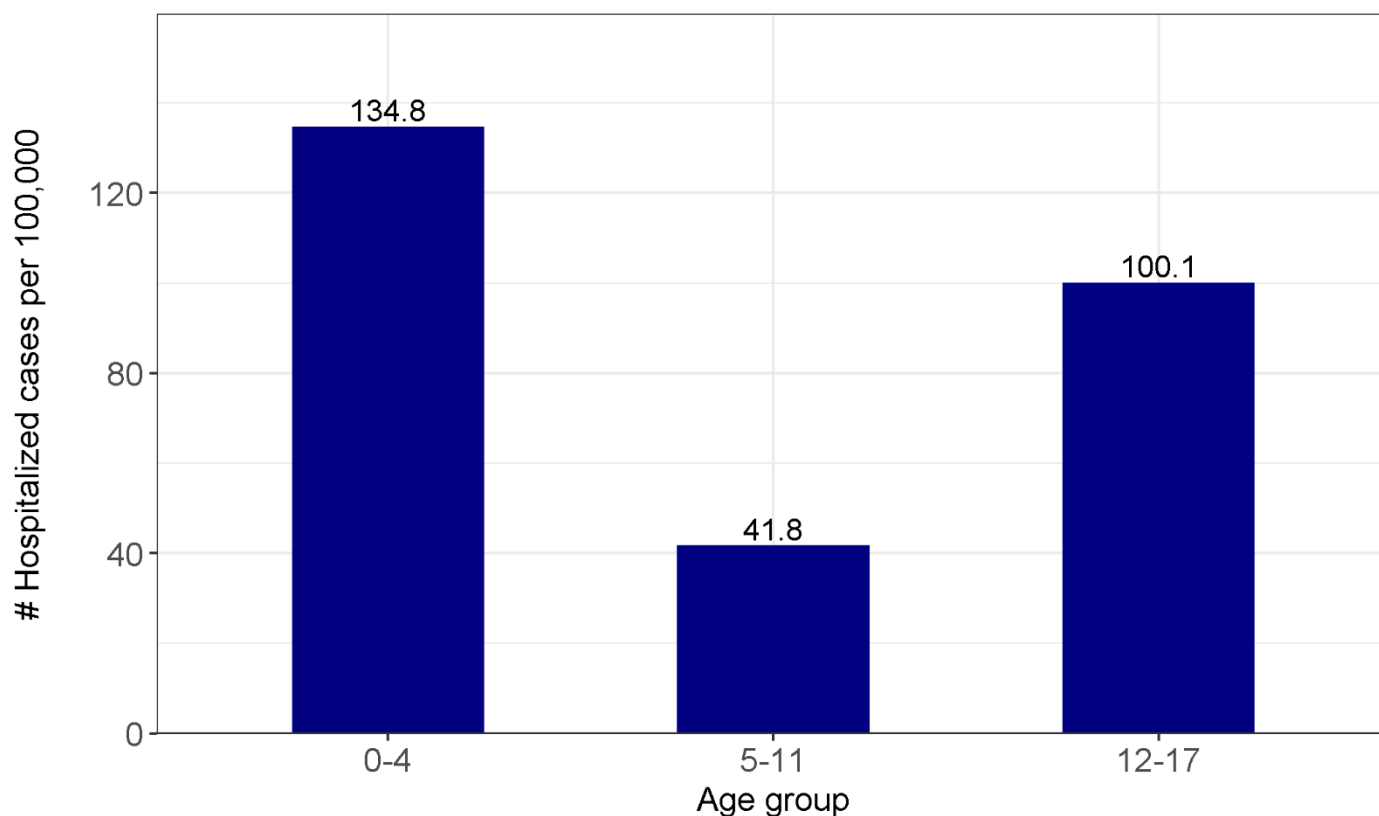
### SECTION 3: PEDIATRIC HOSPITALIZATIONS

*Out-of-state pediatric cases were excluded.*

| Total pediatric hospitalizations | Pediatric hospitalizations in the last week | Total Pediatric deaths |
|----------------------------------|---|------------------------|
| 401                              | 14  | 7                      |

#### Hospitalization rate per 100,000 population and percentage by age group

*It should be noted that due to the small number of hospitalizations of pediatric cases, the hospitalization rates per 100,000 population for these age groups should be interpreted with caution. <sup>1</sup>*



<sup>1</sup> Deaths certified to have COVID-19 disease or SARS-CoV-2 as a cause of death or a significant condition contributing to death. Intentional and unintentional injuries are excluded. Death reporting might be delayed up to 6 weeks. Beginning January 1, 2022, deaths due to natural causes matched to a SARS-CoV-2 positive test result within 30 days of the date of death are included as COVID-19 related deaths even when COVID is not listed on the death certificate.

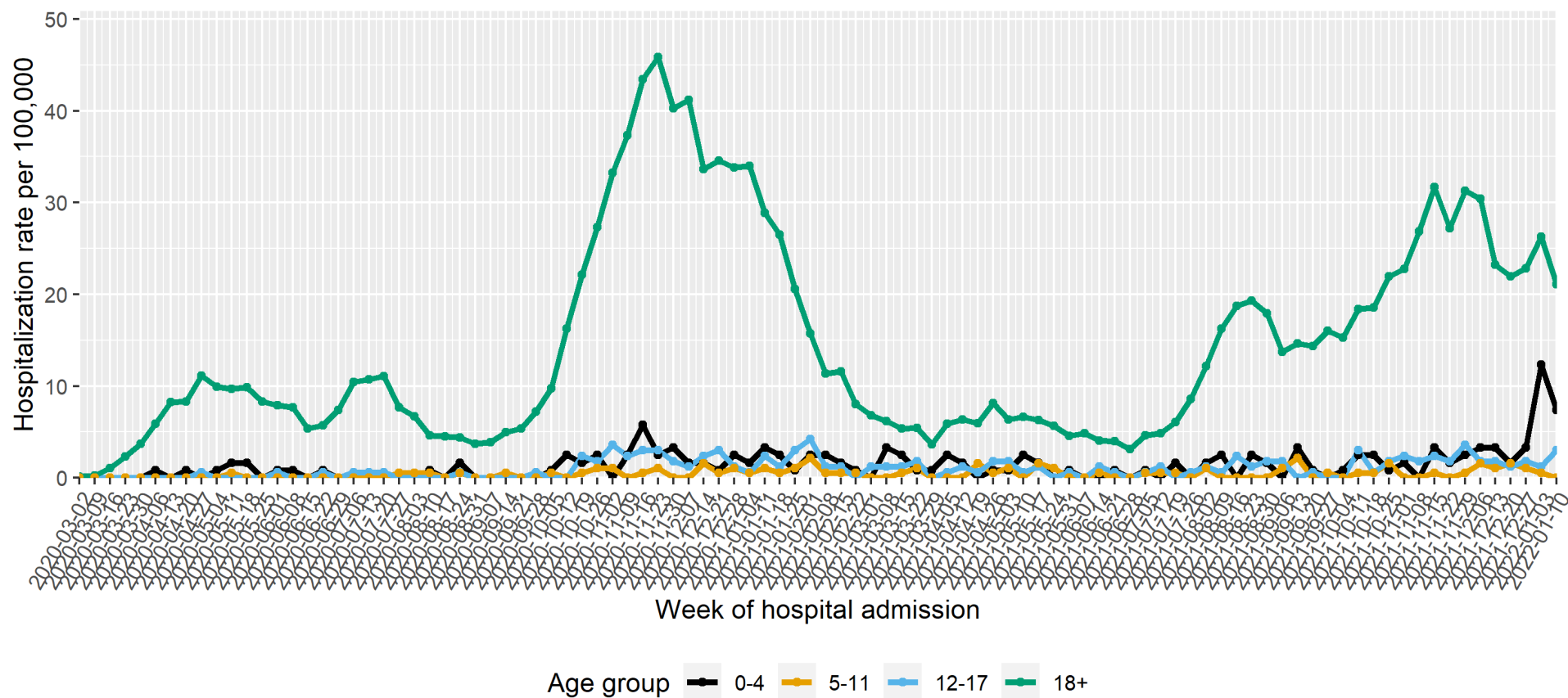
Table 1. Number of hospitalizations, percent of hospitalizations and rate of hospitalization per 100,000 for cases under 18 years old

| Age group (years) | Number of hospitalizations | Percent of hospitalizations<br>Under 18 years old | Hospitalization rate per<br>100,000 population |
|-------------------|----------------------------|---|--|
| 0-4               | 164                        | 40.0%   | 134.8  |
| 5-11              | 79                         | 19.3%   | 41.8   |
| 12-17             | 167                        | 40.7%   | 100.1  |

Table 2. Number of hospitalizations, percent of hospitalizations and rate of hospitalization per 100,000 for cases under 18 years old compared to 18 years and over

| Age group (years) | Number of hospitalizations | Percent of hospitalizations<br>Under 18 years old | Hospitalization rate per<br>100,000 population |
|-------------------|----------------------------|---|--|
| Under 18          | 410                        | 1.8%  | 85.9   |
| 18+               | 22752                      | 98.2%   | 1399.9   |

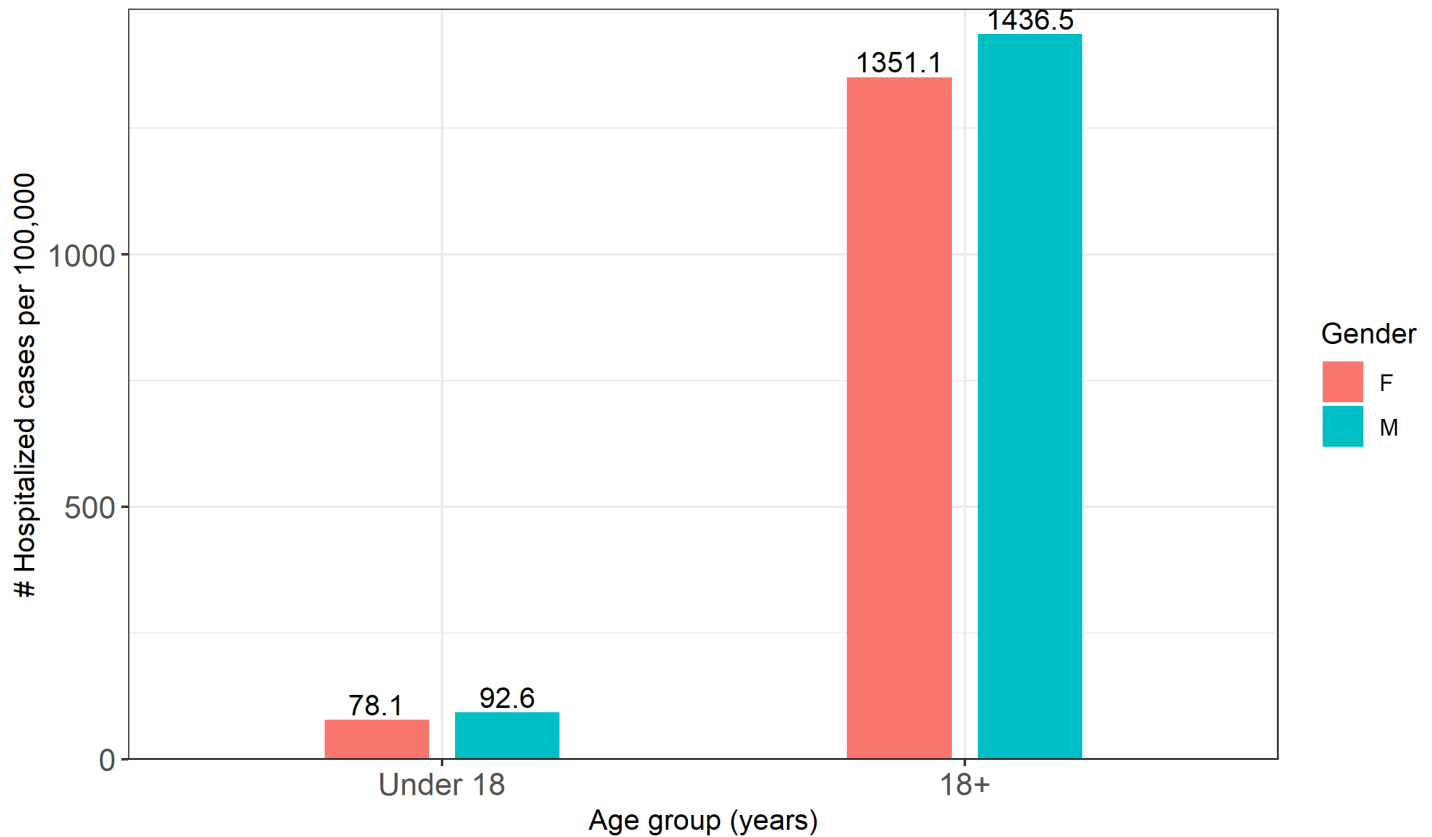
## Hospitalizations per 100,000 population by age each week



**Finding:** Overall, the hospitalization rates per 100,000 population among the pediatric age groups have remained low. It should be noted that due to the small number of hospitalizations of pediatric cases, the hospitalization rates per 100,000 population for these age groups should be interpreted with caution

Note: Hospitalizations in the previous week may not yet be reported.

## Hospitalization rate per 100,000 population and percentage by sex



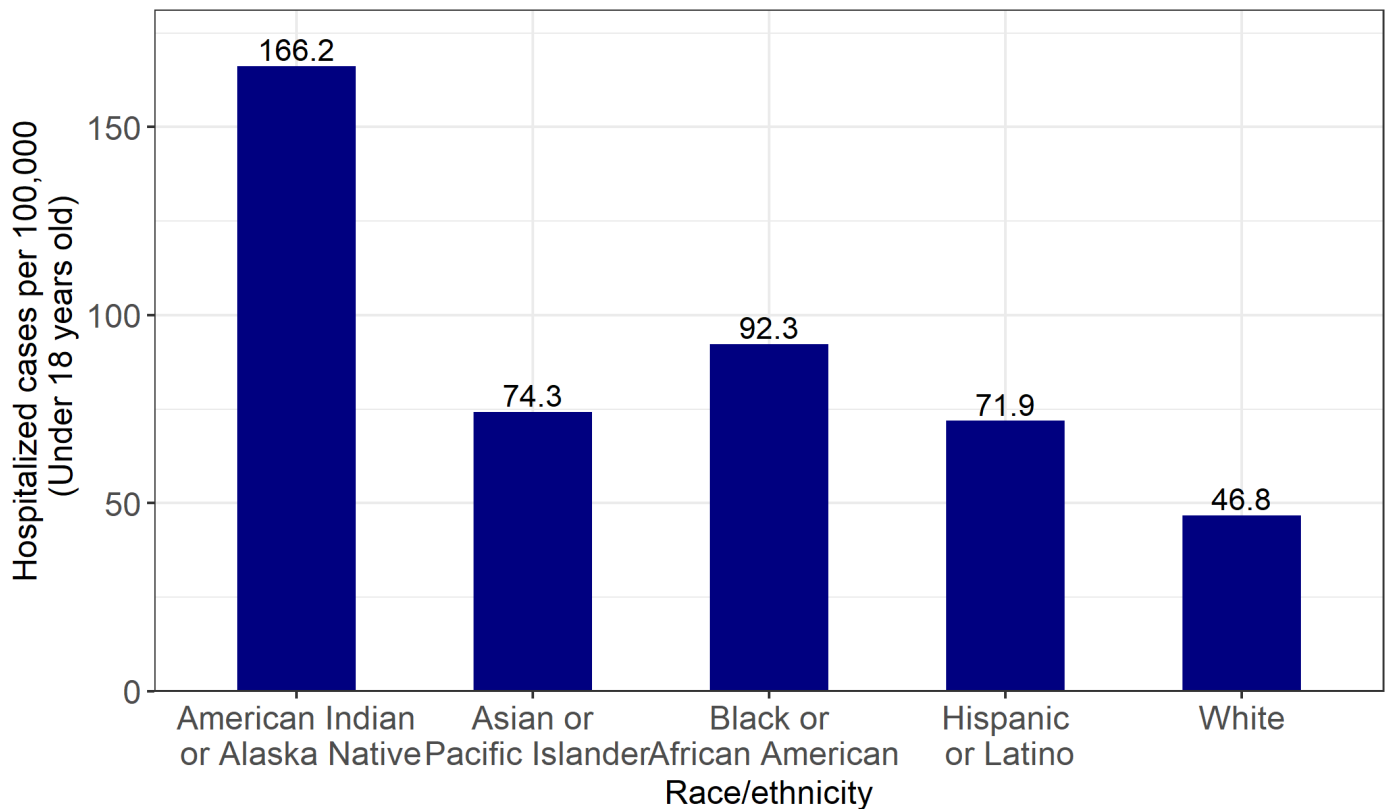
| Age group (years) | Sex    | Number of hospitalizations | Percent of hospitalizations within age group | Hospitalization rate per 100,000 |
|-------------------|--------|----------------------------|--|----------------------------------|
| Under 18          | Female | 183                        | 44.9%  | 78.1                             |
|                   | Male   | 225                        | 55.1%  | 92.6                             |
| 18+               | Female | 11185                      | 49.4%  | 1351.1                           |
|                   | Male   | 11455                      | 50.6%  | 1436.5                           |

Note: 190 cases were excluded due to missing or unknown sex information.

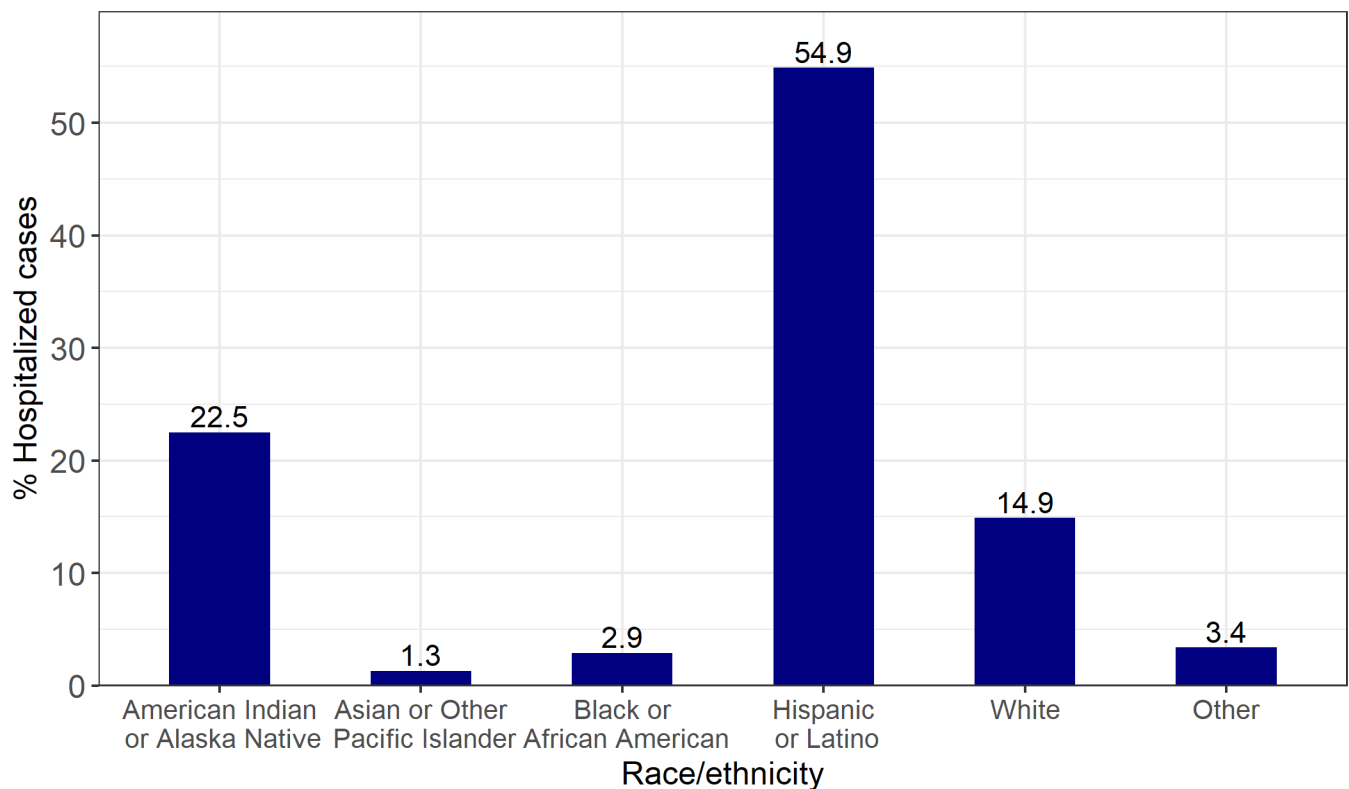
**Finding:** The hospitalization rate per 100,000 population is similar between males and females within the Under 18 and over 18 years age groups. It should be noted that due to the small number of hospitalizations of pediatric cases, the hospitalization rates per 100,000 population for these age groups should be interpreted with caution.

### Hospitalization rate per 100,000 population and percentage by race/ethnicity

**Finding:** In the Under 18 years old age group, the hospitalization rate per 100,000 population is the highest in American Indian or Alaska Native children at **166.2** followed by Black or African American at **92.3**. However, Hispanic or Latino children make up **54.9%** of the total number of pediatric cases hospitalized, followed by American Indian or Alaska Native children, at **22.5%**. It should be noted that due to the small number of hospitalizations of pediatric cases, the hospitalization rates per 100,000 population for these age groups should be interpreted with caution.



Note: For Under 18 years age group, **30** cases had missing race/ethnicity information and were excluded. **16** cases "Refused to answer" or answered "Other" and were also excluded.



| Age group (years) | Race/ethnicity                          | Number of hospitalizations | Percent of hospitalizations within age group | Hospitalization rate per 100,000 population |
|-------------------|---|----------------------------|--|---|
| <b>Under 18</b>   | <b>American Indian or Alaska Native</b> | 85                         | 22.5%  | 166.2                                       |
|                   | <b>Asian</b>                            | 5                          | 1.3%   | 74.3  |
|                   | <b>Black or African American</b>        | 11                         | 2.9%   | 92.3  |
|                   | <b>Hispanic or Latino</b>               | 207                        | 54.9%  | 71.9  |
|                   | <b>White</b>                            | 56                         | 14.9%  | 46.8  |
| <b>18+</b>        | <b>American Indian or Alaska Native</b> | 5664                       | 26.1%  | 4055.9                                      |
|                   | <b>Asian</b>                            | 224                        | 1.0%   | 739.6                                       |
|                   | <b>Black or African American</b>        | 293                        | 1.3%   | 820.1                                       |
|                   | <b>Hispanic or Latino</b>               | 9346                       | 43.0%  | 1249.7                                      |
|                   | <b>White</b>                            | 5804                       | 26.7%  | 864.0                                       |

Notes:

- For Under 18 years age group, **30** cases had missing race/ethnicity information and were excluded. **16** cases “Refused to answer” or answered “Other” and were also excluded.
- For the “18+” years age group, **980** had missing race/ethnicity information and were excluded. **439** cases “Refused to answer” or answered “Other” and were also excluded.
- Rates for Native Hawaiian or Other Pacific Islanders and “Other” are excluded, as there are no population estimates for these populations.

## Data Sources

- **COVID-19 data**
  - **New Mexico Electronic Disease Surveillance System (NM-EDSS)**, Infectious Disease Epidemiology Bureau, Epidemiology and Response Division, New Mexico Department of Health.
  - **Salesforce/MTX COVID-19 Case Investigation Platform.**
- **Population Estimates:** University of New Mexico, Geospatial and Population Studies (GPS) Program.

## Data Notes

- **The data reported in this weekly update may not match the daily numbers that are reported in the New Mexico Department of Health (NMDOH) press releases and/or the NMDOH COVID-19 data dashboard. This may be due to variation in the date and time of data extraction from NM-EDSS, corrections after quality assurance review, and differences in the exclusion criteria.**
- **New Mexico Electronic Disease Surveillance System (NM-EDSS).** Disease incidence data are derived from reports of notifiable infectious diseases. NMDOH relies on health care providers, laboratories, hospitals, clinics, institutions and individuals to report suspected and confirmed notifiable infectious diseases in accordance with New Mexico Administrative Code 7.4.3.13. Under-reporting can occur due to of lack of awareness about reporting requirements or lack of compliance with those requirements. Not all cases of infectious diseases can be detected for various reasons including lack of access to health care services, lack of laboratory testing or concerns about confidentiality. Specific and standardized national case definitions are used to classify disease reports by case status.
- **New Mexico Population Estimates.** All population estimates apply to July 1 of 2019. Estimates include decimal fractions. The sum of population subgroup estimates may not exactly equal the overall state population estimate due to rounding error. Population estimates for previous years are occasionally revised as new information becomes available. When publishing trend data, always be sure that your rates for earlier years match current rates on NM-IBIS that have been calculated with the most up-to-date population estimates.
- **Race/Ethnicity.** Race/Ethnicity are reported as a single variable according to the selection of the case. Any case who is Hispanic is in the Hispanic category and all other races are non-Hispanic.
- **Gender** refers to a person's internal sense of being male, female, some combination of male and female, or neither male nor female. **Sex** refers to the biological anatomy of an individual's reproductive system, and secondary sex characteristics.
- **Case rate per 100,000 population.** A basic measure of disease-specific case frequency is a rate, which takes into account the number of cases and the population size. It is helpful in making public health decisions for a given population, relative to another population regardless of size.