

# NEW MEXICO COVID-19 CASES UPDATE

## STATEWIDE AND COUNTY-LEVEL TRENDS

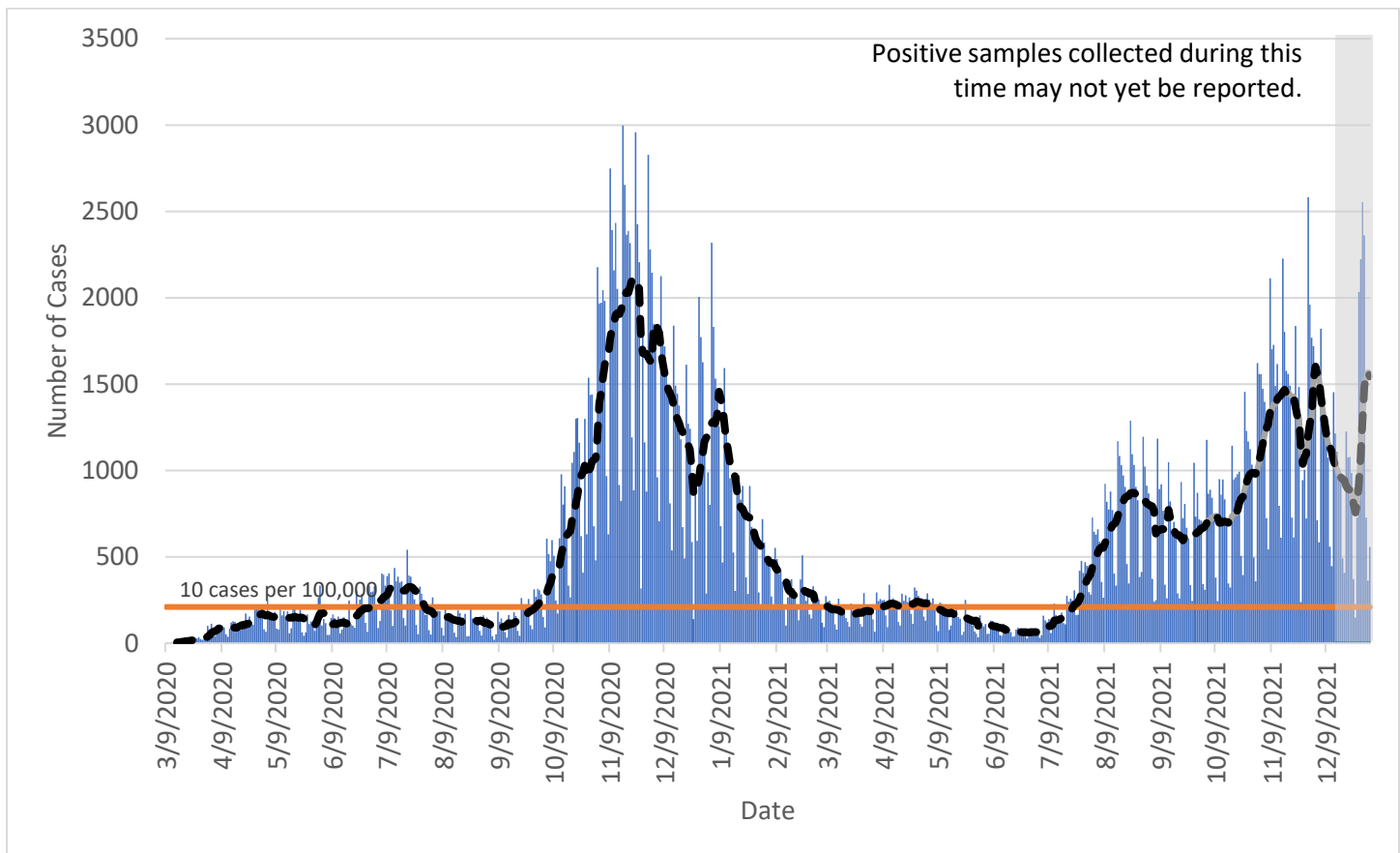
January 3<sup>rd</sup>, 2022

Unless stated otherwise, all data reported here exclude cases who are from out-of-state and cases who are detainees in Federal Immigration and Customs Enforcement (ICE) facilities.

Total Cases	Cases in the Last 7 Days
357,480 <sup>1</sup>	12,075

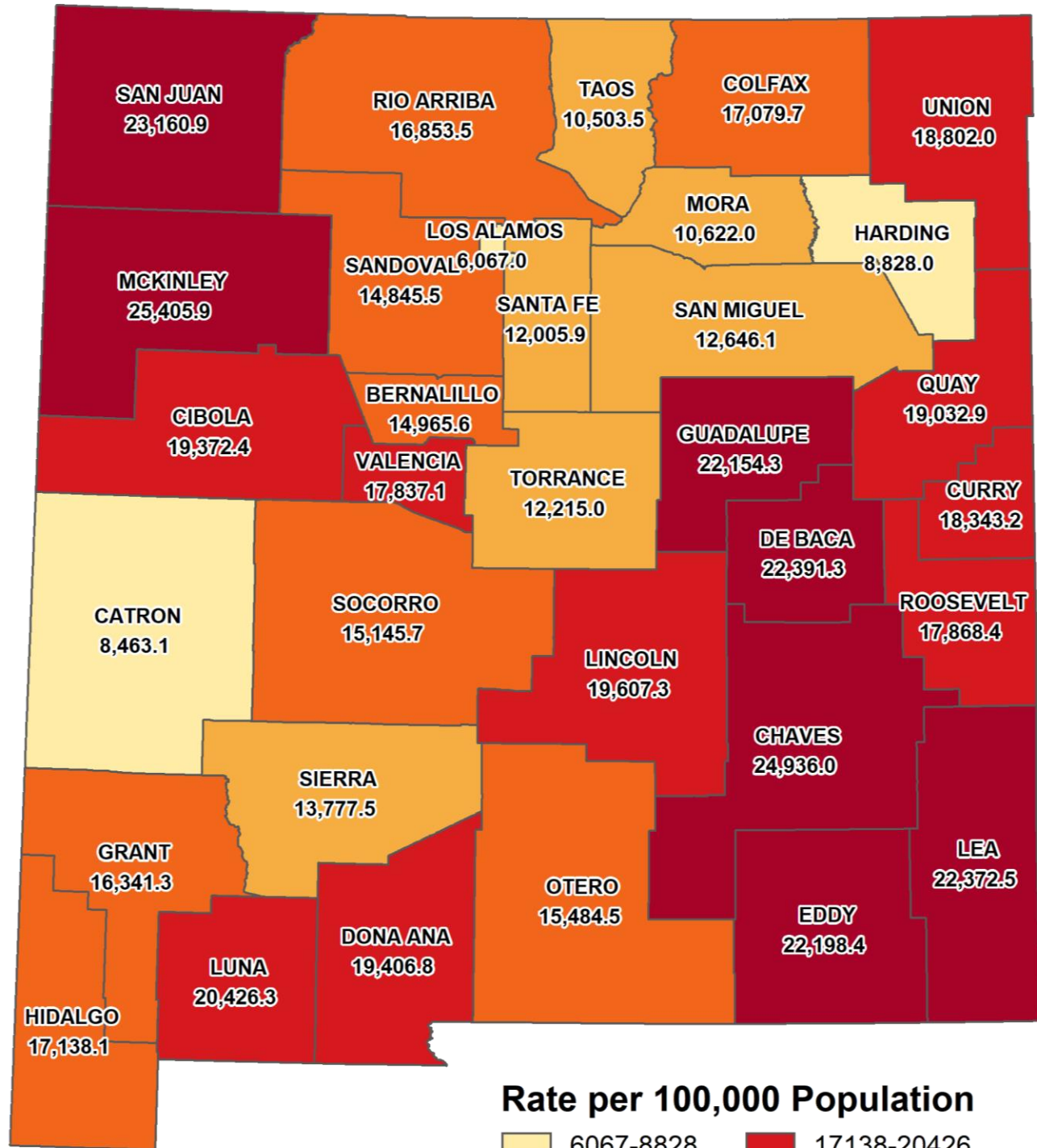
### SECTION 1: STATEWIDE AND COUNTY-LEVEL CASES

#### New Mexico cases by date of specimen collection with 7 day moving average

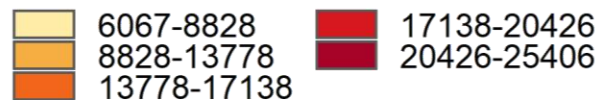


<sup>1</sup> Total cases, as reported on [cv.nmhealth.org](https://cv.nmhealth.org), include ICE detainees.

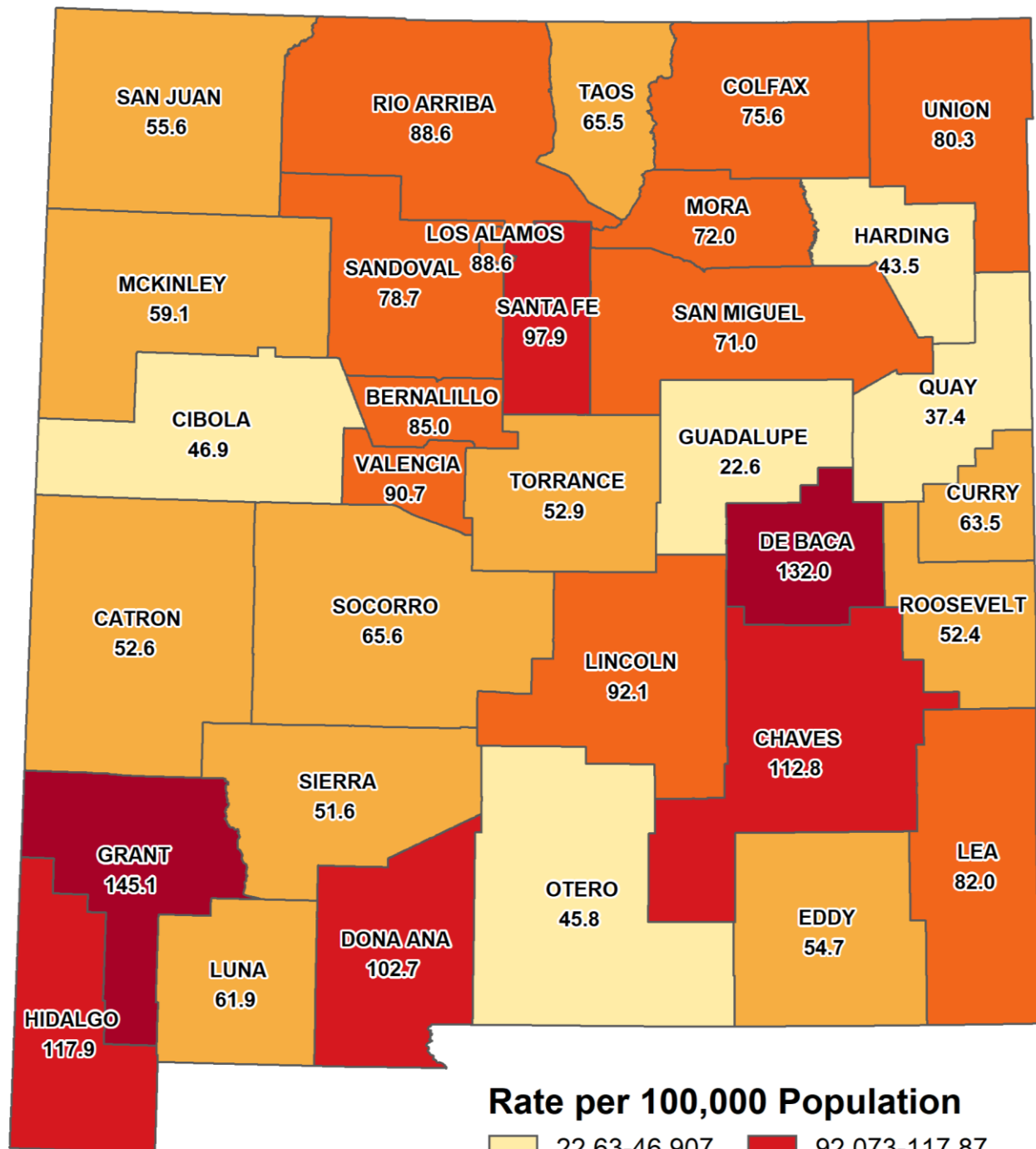
Cumulative case rate per 100,000 population by New Mexico County



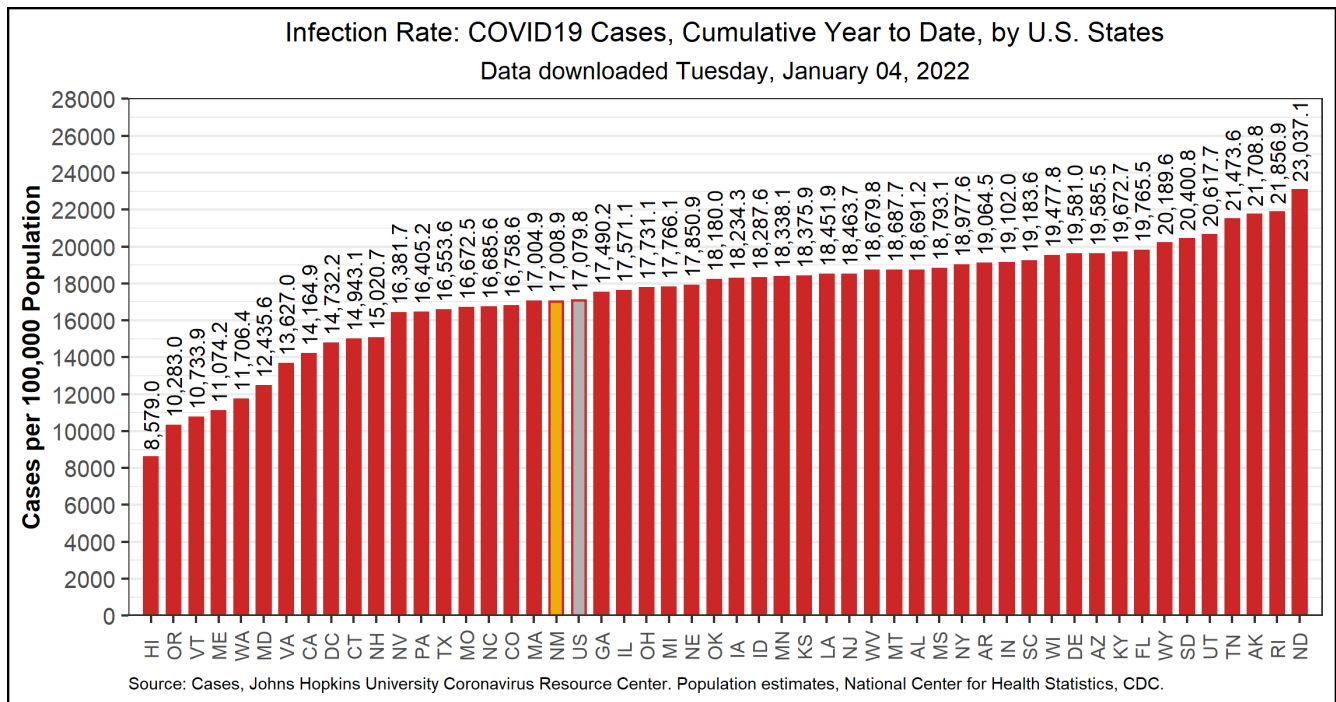
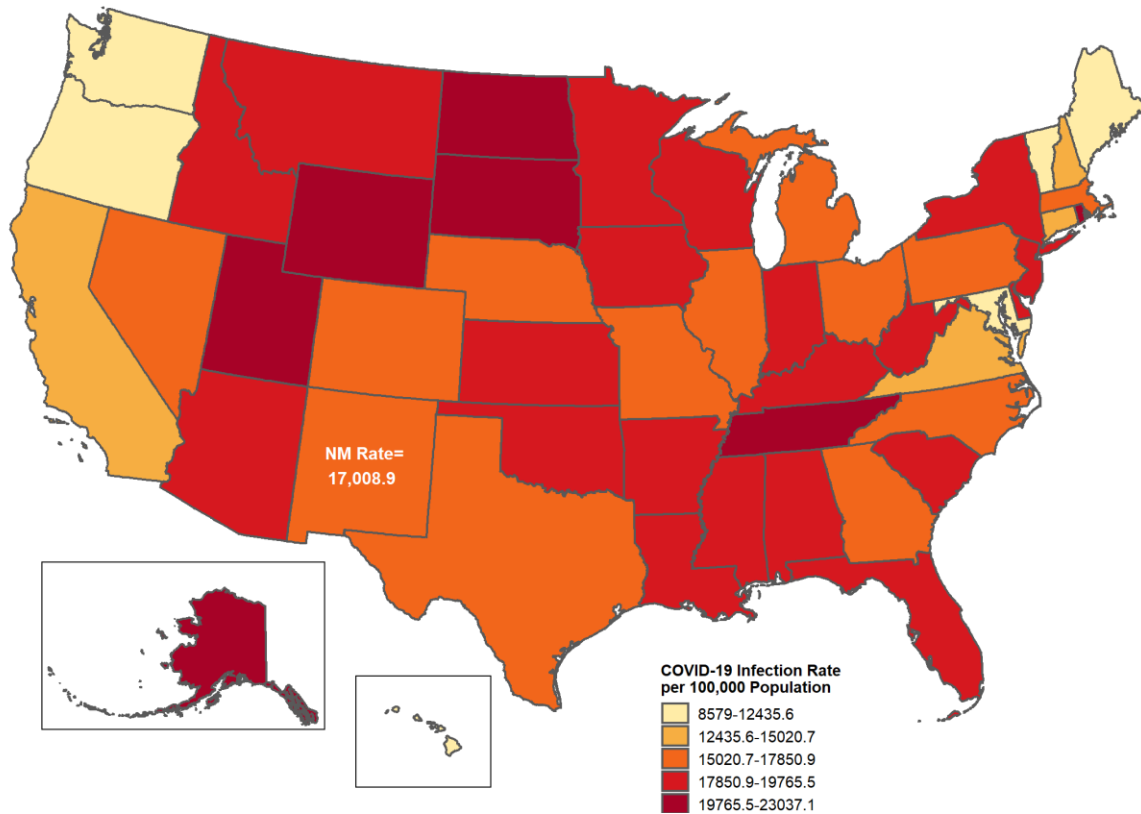
Rate per 100,000 Population



Average daily case rate per 100,000 population in the previous 7 days by New Mexico County  
(12/27 - 01/02)



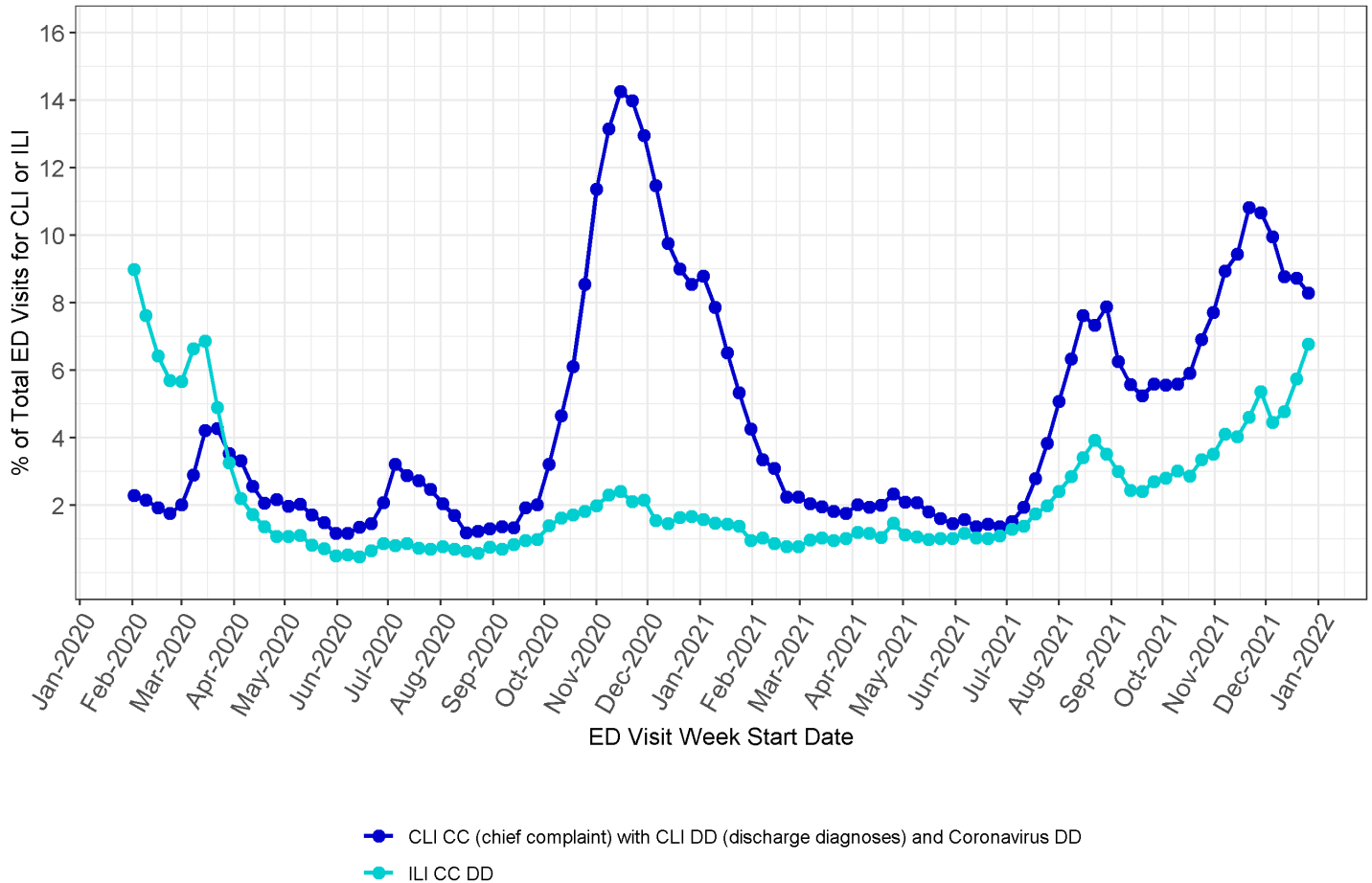
## Cumulative infection rate per 100,000 population by U.S. States



Note: Data updated 01/04/2022 and downloaded from <https://coronavirus.jhu.edu/>. For U.S. interstate comparisons, the methodology used here is slightly different than methodologies used in other NMDOH COVID-19 reports.

## Percentage of all emergency department (ED) visits that were Coronavirus-like illness (CLI) and Influenza-like illness (ILI) related

These visualizations are populated from data in New Mexico's Syndromic Surveillance Database. Initial patient encounter information is usually received within 24 hours, but clinical documentation is continuously being updated as it is identified throughout the patient encounter and hospital coding process.

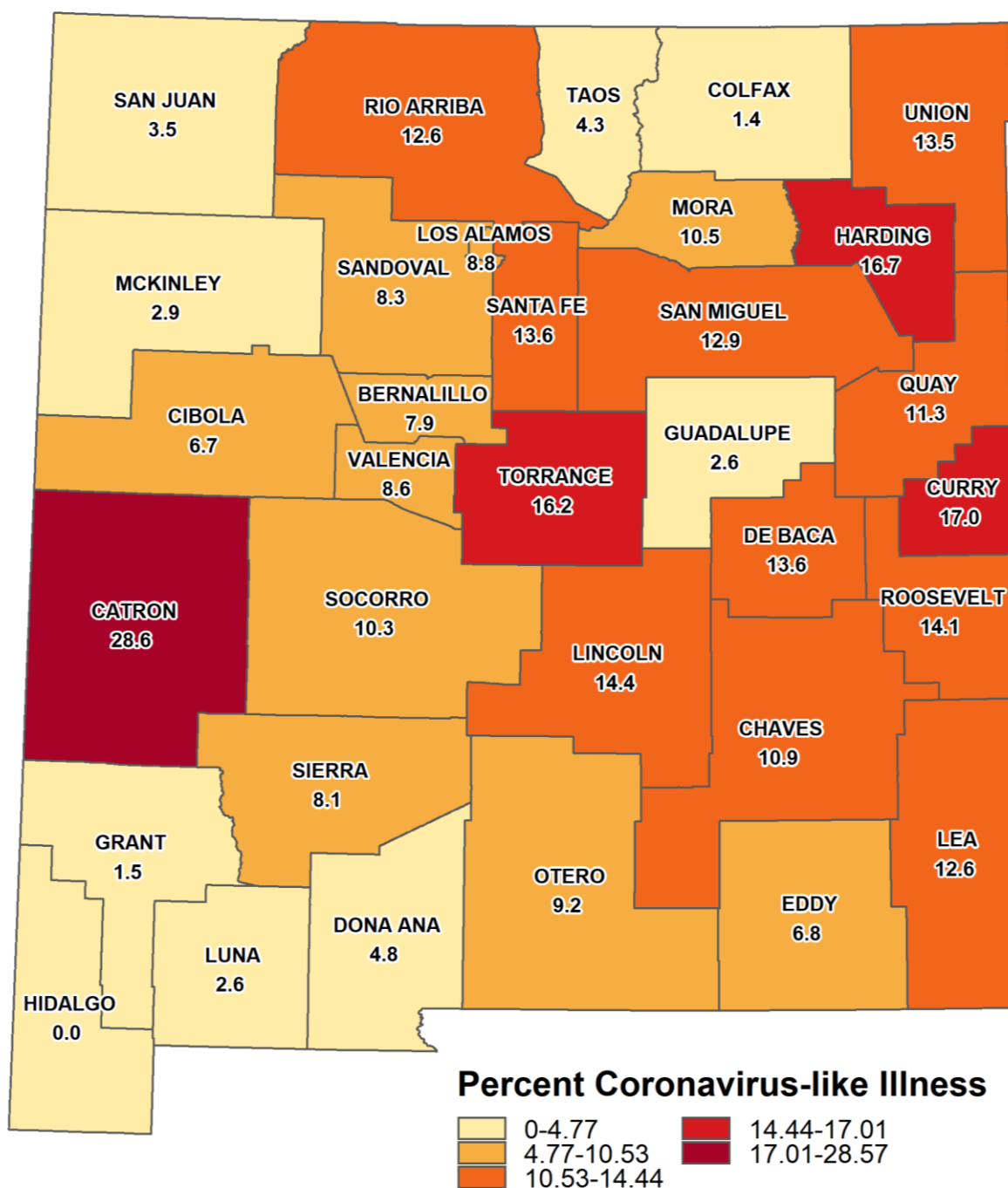


**CLI CC with CLI DD and Coronavirus DD** includes ED encounters with chief complaint consisting of fever and cough, shortness of breath, or difficulty breathing, while also including COVID-19 associated discharge diagnoses codes. The CLI definition excludes known influenza related ED visits coded with related influenza discharge diagnosis.

**ILI CCDD** includes ED encounters with chief complaint consisting of fever and cough, while also including ILI and influenza related discharge diagnoses.

**Percentage of all emergency department (ED) visits that were for Coronavirus-like illness (CLI)  
by New Mexico County  
(12/21 – 01/04)**

These visualizations are populated from data in New Mexico's Syndromic Surveillance Database. Initial patient encounter information is usually received within 24 hours, but clinical documentation is continuously being updated as it is identified throughout the patient encounter and hospital coding process.

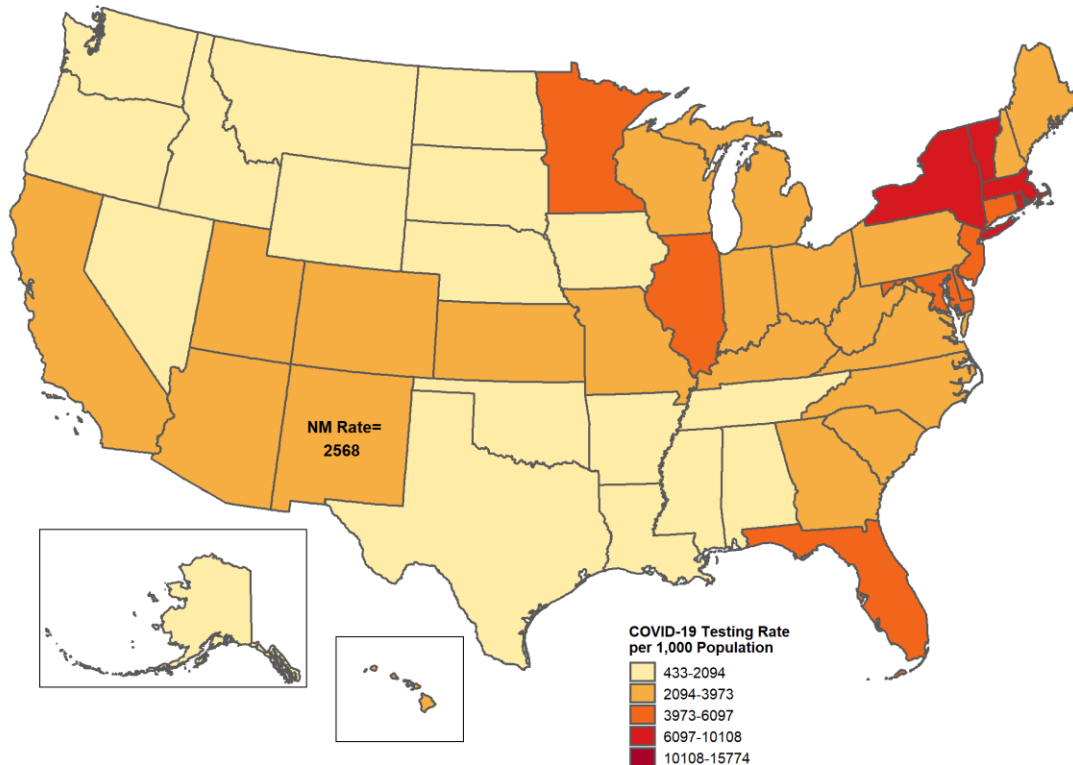


## Cumulative number of cases and recovered cases by county

County	Cumulative cases	Cumulative Recovered
Bernalillo	98711	88268
Catron	289	254
Chaves	15413	13871
Cibola	4448	4080
Colfax	1731	1570
Curry	8998	8105
De Baca	400	338
Doña Ana	40810	36888
Eddy	12611	11644
Grant	4369	3767
Guadalupe	706	663
Harding	58	47
Hidalgo	708	626
Lea	14863	13836
Lincoln	3715	3441
Los Alamos	1034	937
Luna	4907	4486
McKinley	17537	16384
Mora	472	405
Otero	9144	8340
Quay	1579	1352
Rio Arriba	6331	5783
Roosevelt	3509	3039
San Juan	28416	26418
San Miguel	3430	3079
Sandoval	21191	19009
Santa Fe	16922	15060
Sierra	1493	1301
Socorro	2561	2181
Taos	3288	2883
Torrance	1904	1673
Union	534	432
Valencia	12698	11144

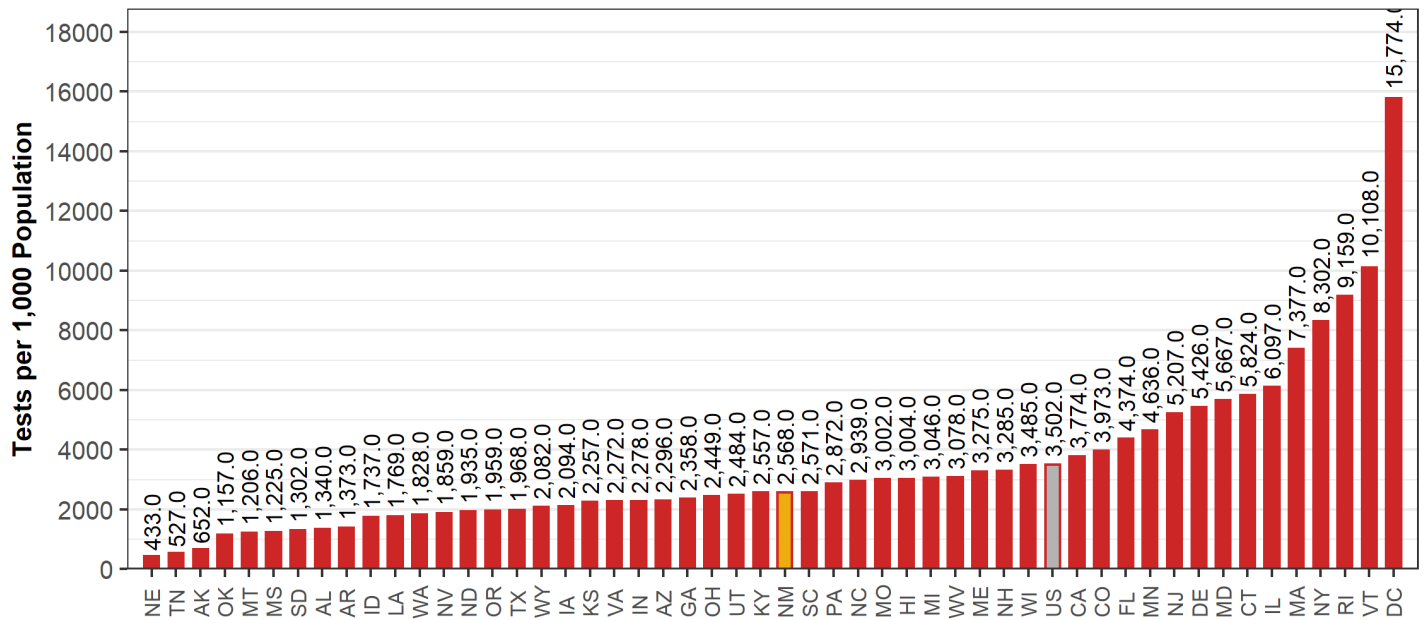
## SECTION 2: TESTING

### Testing rate by U.S. States



### 7-Day Testing Rates: (12/25/2021 - 12/31/2021): COVID-19 Tests Conducted by U.S. States

Data downloaded Tuesday, January 04, 2022



Source: Tests, The COVID Tracking Project, covidtracking.com. Population estimates, National Center for Health Statistics, CDC.

Note: Data downloaded 01.04/2021 and downloaded from <https://beta.healthdata.gov/National/COVID-19-Community-Profile-Report/gqxm-d9w9>. For U.S. interstate comparisons, the methodology used here is slightly different than methodologies used in other NMDOH COVID-19 reports.



## Data Sources

- **COVID-19 data**
  - **New Mexico Electronic Disease Surveillance System (NM-EDSS)**, Infectious Disease Epidemiology Bureau, Epidemiology and Response Division, New Mexico Department of Health.
  - **Salesforce/MTX COVID-19 Case Investigation Platform.**
- **Population Estimates:** University of New Mexico, Geospatial and Population Studies (GPS) Program.
- **Age-adjustment:** US 2000 Standard Population Weights
- **HealthData.gov:** <https://beta.healthdata.gov/National/COVID-19-Community-Profile-Report/gqxm-d9w9>
- **Coronavirus-like illness (CLI) and Influenza-like illness (ILI) related emergency department visits and admissions:** New Mexico's Syndromic Surveillance Database.

## Data Notes

- **The data reported in this weekly update may not match the daily numbers that are reported in the New Mexico Department of Health (NMDOH) press releases and/or the NMDOH COVID-19 data dashboard. This may be due to variation in the date and time of data extraction from NM-EDSS, corrections after quality assurance review, and differences in the exclusion criteria.**
- **New Mexico Electronic Disease Surveillance System (NM-EDSS).** Disease incidence data are derived from reports of notifiable infectious diseases. NMDOH relies on health care providers, laboratories, hospitals, clinics, institutions and individuals to report suspected and confirmed notifiable infectious diseases in accordance with New Mexico Administrative Code 7.4.3.13. Under-reporting can occur due to lack of awareness about reporting requirements or lack of compliance with those requirements. Not all cases of infectious diseases can be detected for various reasons including lack of access to health care services, lack of laboratory testing or concerns about confidentiality. Specific and standardized national case definitions are used to classify disease reports by case status.
- **New Mexico Population Estimates.** All population estimates apply to July 1 of 2019. Estimates include decimal fractions. The sum of population subgroup estimates may not exactly equal the overall state population estimate due to rounding error. Population estimates for previous years are occasionally revised as new information becomes available. When publishing trend data, always be sure that your rates for earlier years match current rates on NM-IBIS that have been calculated with the most up-to-date population estimates.