

NEW MEXICO COVID-19 CASES UPDATE

STATEWIDE AND COUNTY-LEVEL TRENDS

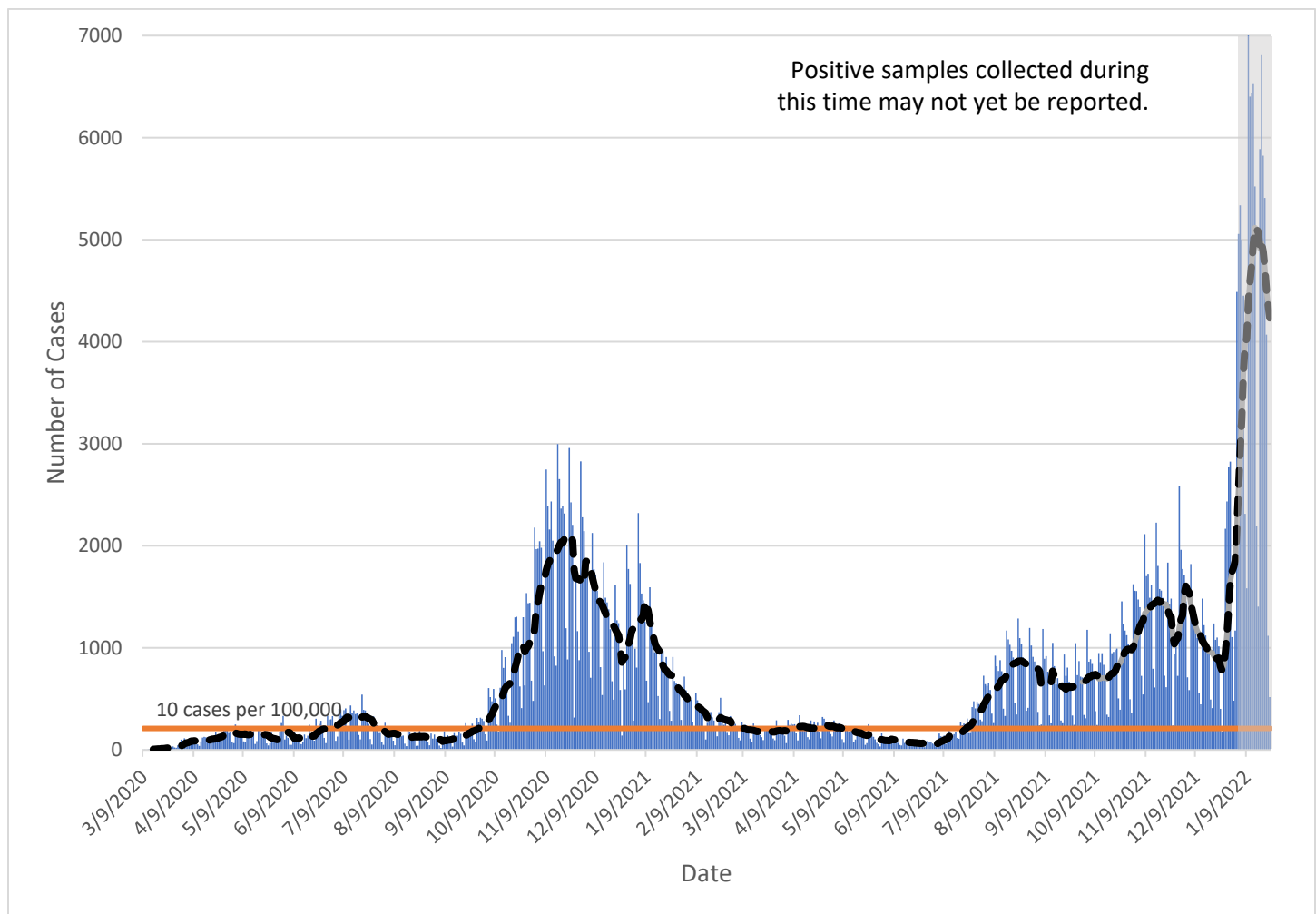
January 24th, 2022

Unless stated otherwise, all data reported here exclude cases who are from out-of-state and cases who are detainees in Federal Immigration and Customs Enforcement (ICE) facilities.

Total Cases	Cases in the Last 7 Days
452,615 ¹	36,151

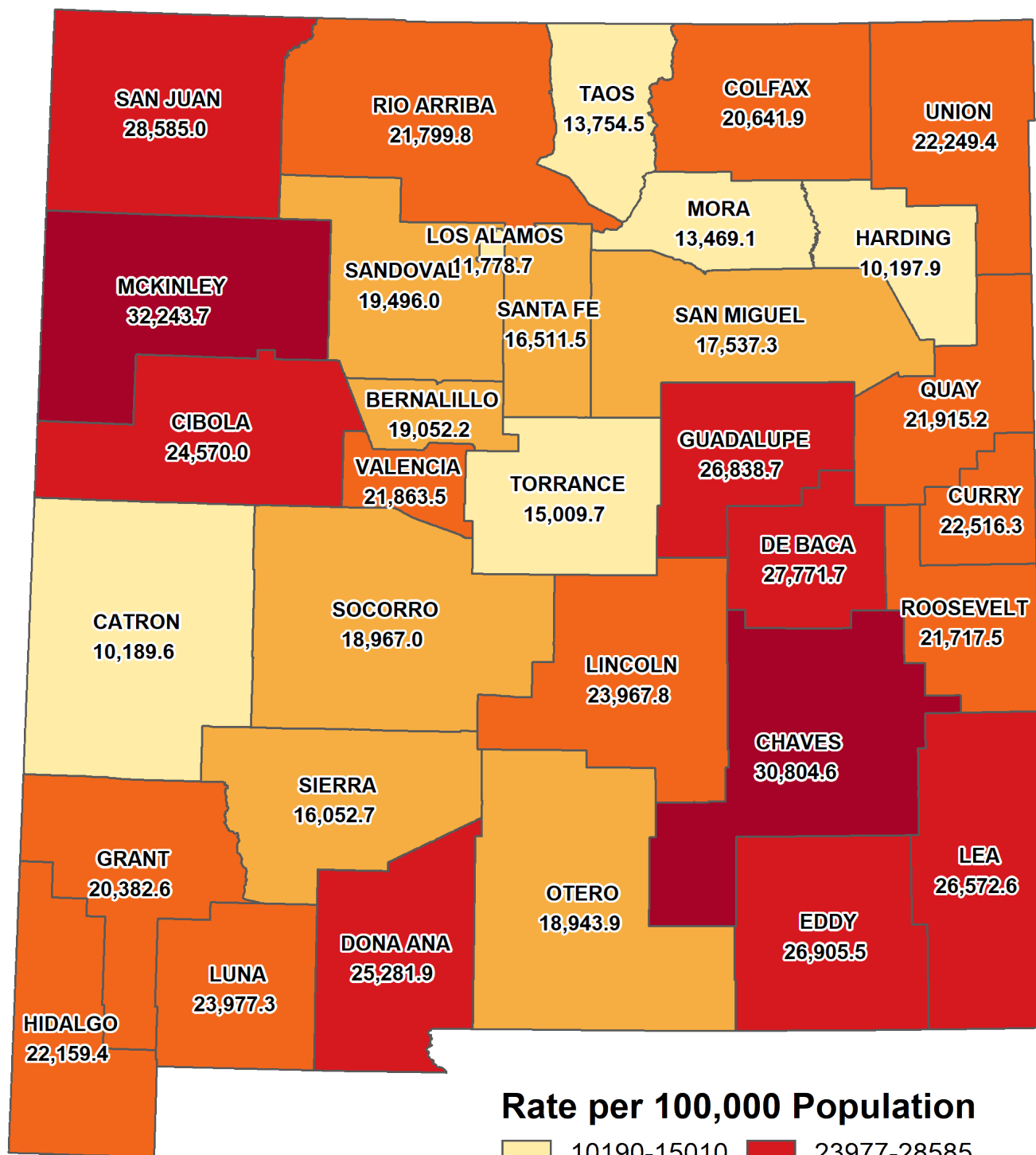
SECTION 1: STATEWIDE AND COUNTY-LEVEL CASES

New Mexico cases by date of specimen collection with 7 day moving average

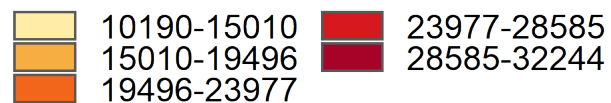


¹ Total cases, as reported on cv.nmhealth.org, include ICE detainees.

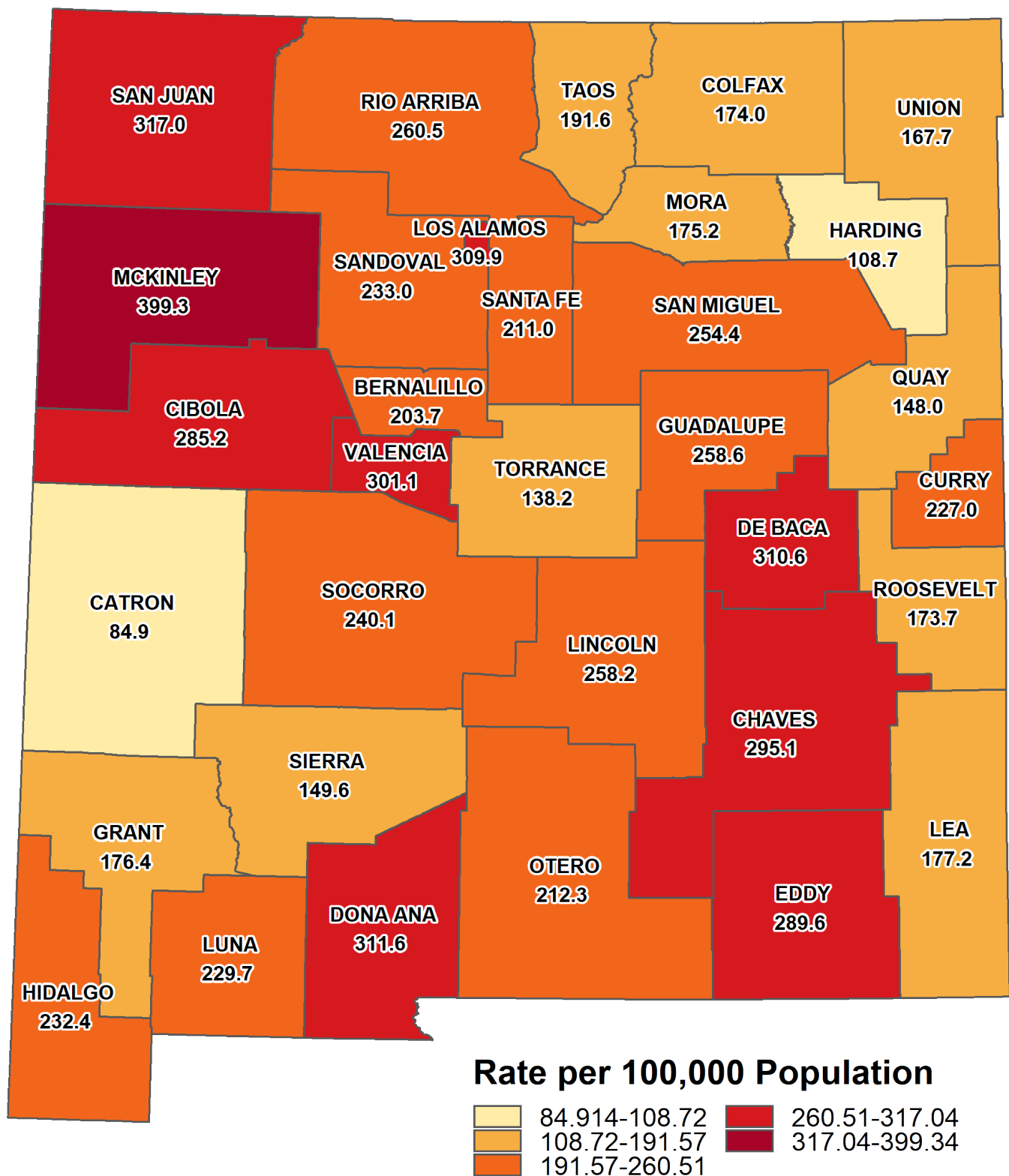
Cumulative case rate per 100,000 population by New Mexico County



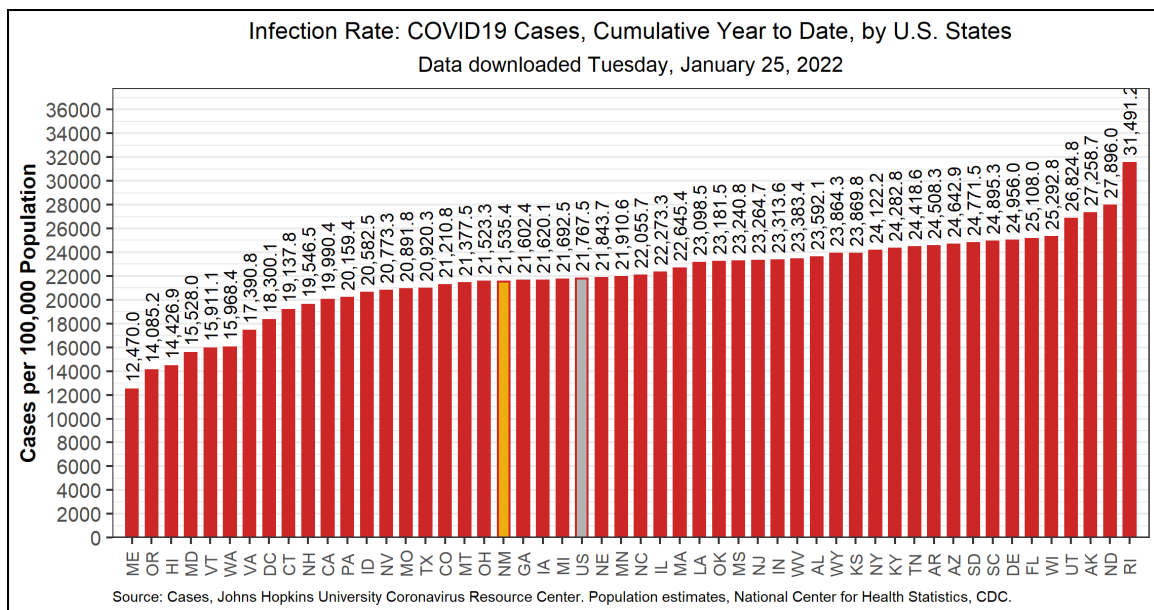
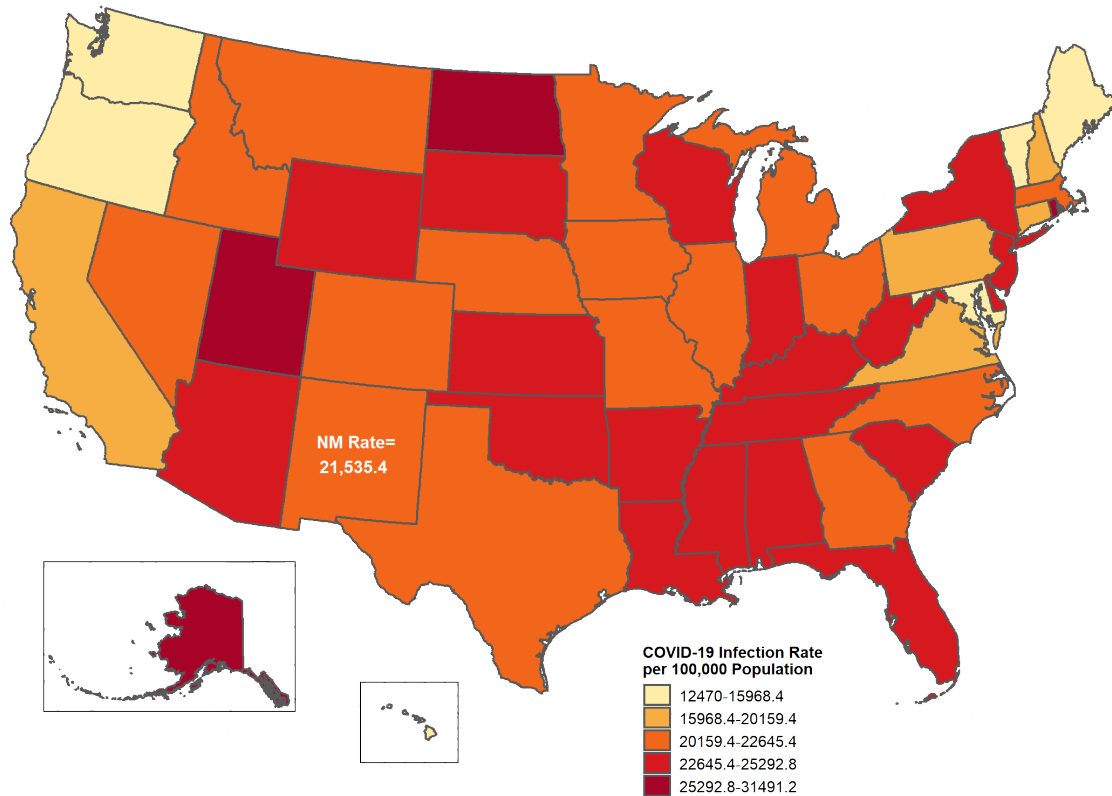
Rate per 100,000 Population



Average daily case rate per 100,000 population in the previous 7 days by New Mexico County
(01/17 - 01/23)



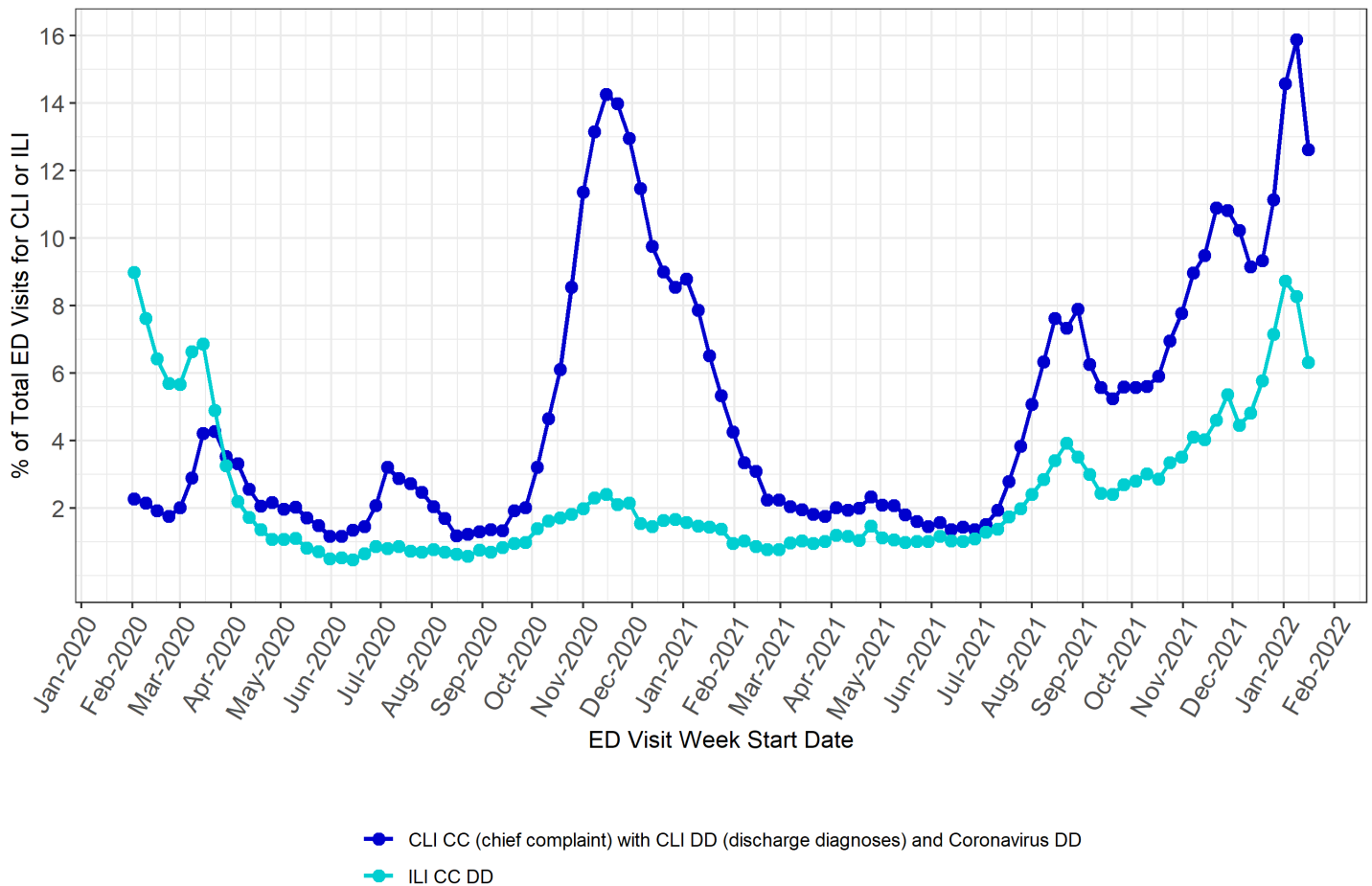
Cumulative infection rate per 100,000 population by U.S. States



Note: Data updated 01/25/2022 and downloaded from <https://coronavirus.jhu.edu/>. For U.S. interstate comparisons, the methodology used here is slightly different than methodologies used in other NMDOH COVID-19 reports.

Percentage of all emergency department (ED) visits that were Coronavirus-like illness (CLI) and Influenza-like illness (ILI) related

These visualizations are populated from data in New Mexico's Syndromic Surveillance Database. Initial patient encounter information is usually received within 24 hours, but clinical documentation is continuously being updated as it is identified throughout the patient encounter and hospital coding process.

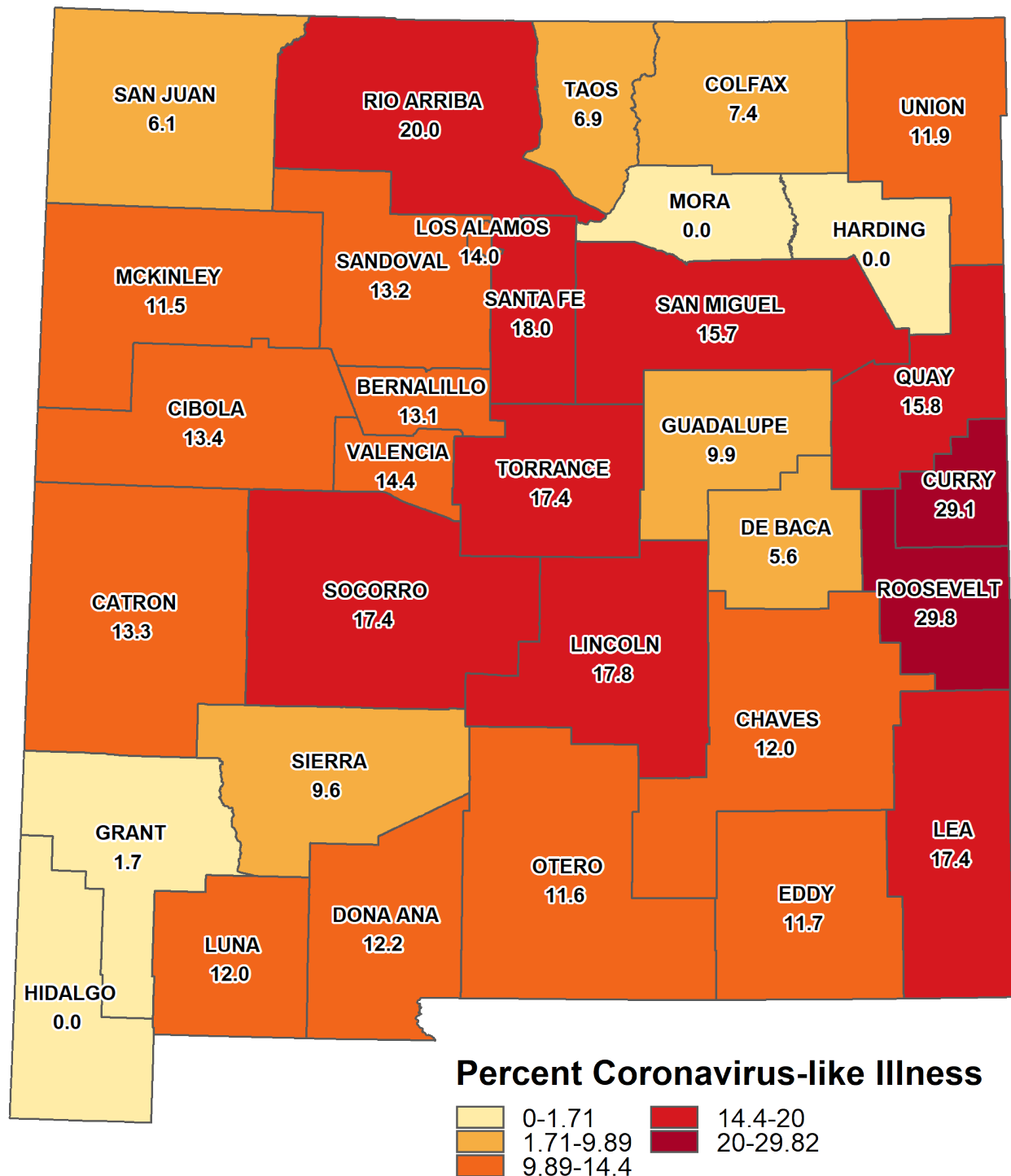


CLI CC with CLI DD and Coronavirus DD includes ED encounters with chief complaint consisting of fever and cough, shortness of breath, or difficulty breathing, while also including COVID-19 associated discharge diagnoses codes. The CLI definition excludes known influenza related ED visits coded with related influenza discharge diagnosis.

ILI CCDD includes ED encounters with chief complaint consisting of fever and cough, while also including ILI and influenza related discharge diagnoses.

**Percentage of all emergency department (ED) visits that were for Coronavirus-like illness (CLI)
by New Mexico County
(01/11 - 01/25)**

These visualizations are populated from data in New Mexico's Syndromic Surveillance Database. Initial patient encounter information is usually received within 24 hours, but clinical documentation is continuously being updated as it is identified throughout the patient encounter and hospital coding process.

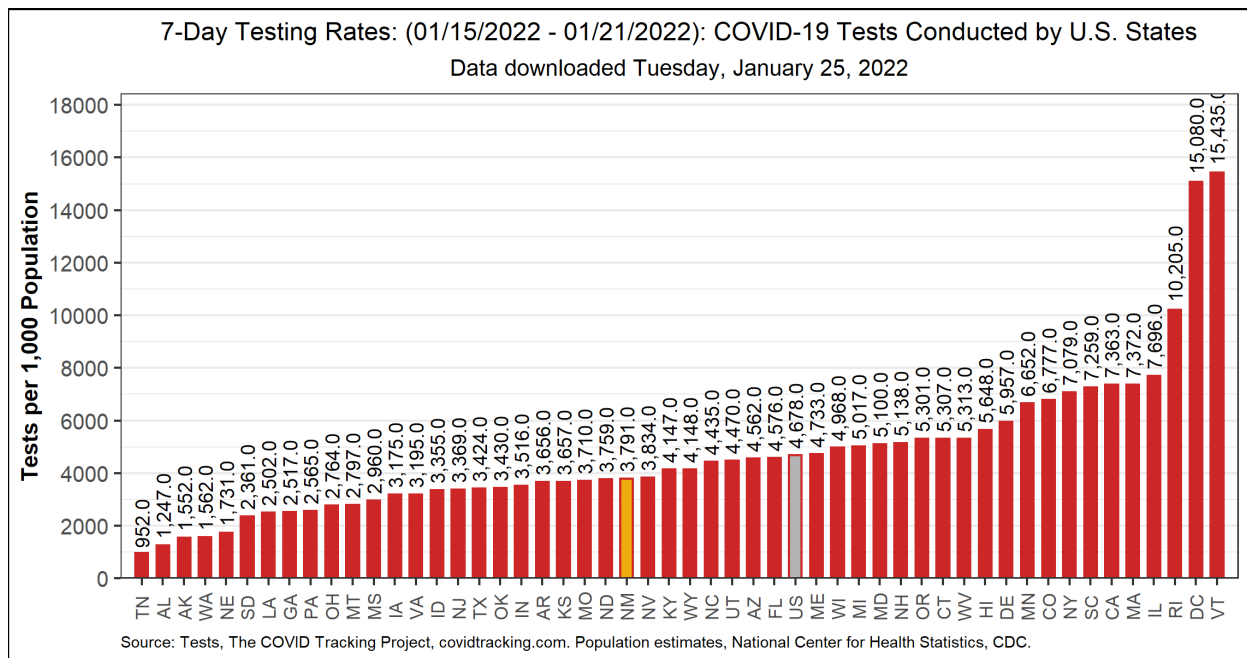
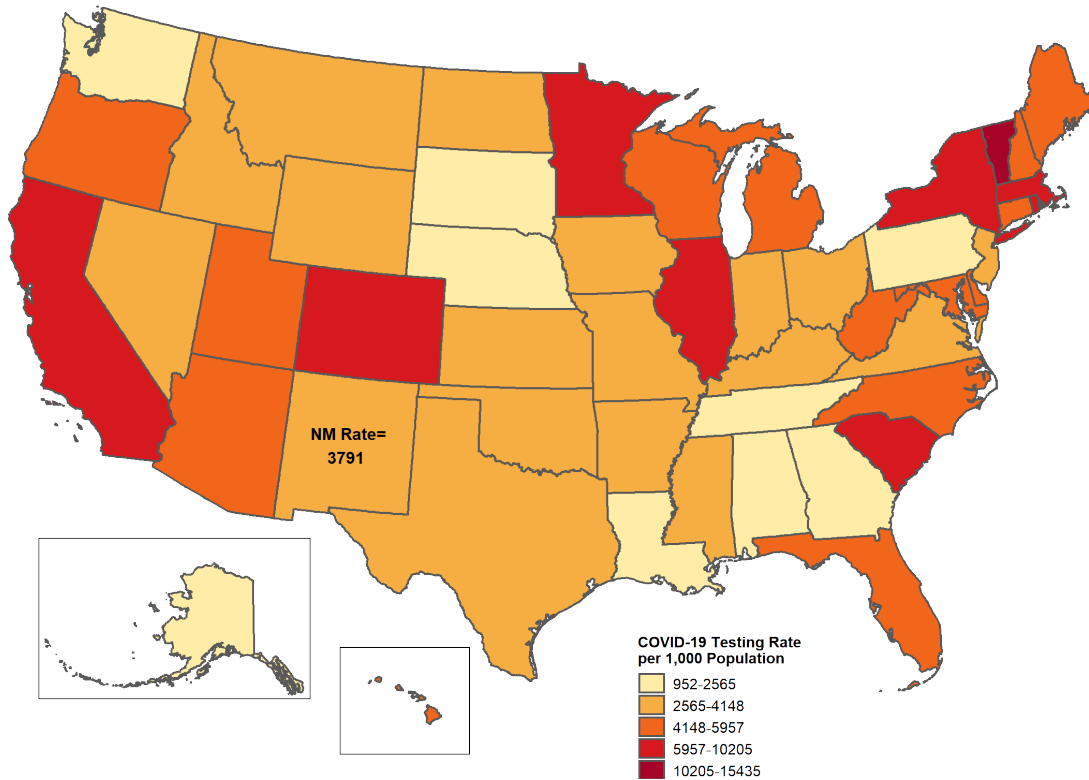


Cumulative number of cases and recovered cases by county

County	Cumulative cases	Cumulative Recovered
Bernalillo	124683	95216
Catron	346	270
Chaves	18890	14888
Cibola	5600	4287
Colfax	2092	1639
Curry	10901	8723
De Baca	502	390
Doña Ana	52191	39586
Eddy	14903	12230
Grant	5496	4135
Guadalupe	885	688
Harding	64	53
Hidalgo	925	678
Lea	17757	14332
Lincoln	4517	3620
Los Alamos	2012	999
Luna	5660	4744
McKinley	21564	16840
Mora	589	444
Otero	11089	8905
Quay	1815	1525
Rio Arriba	8196	6203
Roosevelt	4244	3379
San Juan	33958	27519
San Miguel	4664	3330
Sandoval	27489	20556
Santa Fe	23421	16322
Sierra	1719	1406
Socorro	3167	2461
Taos	4304	3147
Torrance	2314	1825
Union	652	507
Valencia	15390	12060

SECTION 2: TESTING

Testing rate by U.S. States



Note: Data downloaded 01/25/2022 and downloaded from <https://beta.healthdata.gov/National/COVID-19-Community-Profile-Report/gqxm-d9w9>. For U.S. interstate comparisons, the methodology used here is slightly different than methodologies used in other NMDOH COVID-19 reports.

Data Sources

- **COVID-19 data**
 - **New Mexico Electronic Disease Surveillance System (NM-EDSS)**, Infectious Disease Epidemiology Bureau, Epidemiology and Response Division, New Mexico Department of Health.
 - **Salesforce/MTX COVID-19 Case Investigation Platform.**
- **Population Estimates:** University of New Mexico, Geospatial and Population Studies (GPS) Program.
- **Age-adjustment:** US 2000 Standard Population Weights
- **HealthData.gov:** <https://beta.healthdata.gov/National/COVID-19-Community-Profile-Report/gqxm-d9w9>
- **Coronavirus-like illness (CLI) and Influenza-like illness (ILI) related emergency department visits and admissions:** New Mexico's Syndromic Surveillance Database.

Data Notes

- **The data reported in this weekly update may not match the daily numbers that are reported in the New Mexico Department of Health (NMDOH) press releases and/or the NMDOH COVID-19 data dashboard. This may be due to variation in the date and time of data extraction from NM-EDSS, corrections after quality assurance review, and differences in the exclusion criteria.**
- **New Mexico Electronic Disease Surveillance System (NM-EDSS).** Disease incidence data are derived from reports of notifiable infectious diseases. NMDOH relies on health care providers, laboratories, hospitals, clinics, institutions and individuals to report suspected and confirmed notifiable infectious diseases in accordance with New Mexico Administrative Code 7.4.3.13. Under-reporting can occur due to lack of awareness about reporting requirements or lack of compliance with those requirements. Not all cases of infectious diseases can be detected for various reasons including lack of access to health care services, lack of laboratory testing or concerns about confidentiality. Specific and standardized national case definitions are used to classify disease reports by case status.
- **New Mexico Population Estimates.** All population estimates apply to July 1 of 2019. Estimates include decimal fractions. The sum of population subgroup estimates may not exactly equal the overall state population estimate due to rounding error. Population estimates for previous years are occasionally revised as new information becomes available. When publishing trend data, always be sure that your rates for earlier years match current rates on NM-IBIS that have been calculated with the most up-to-date population estimates.