

NEW MEXICO COVID-19 MORTALITY UPDATE

April 18, 2022

All data reported here exclude cases who live out-of-state.

Total Deaths

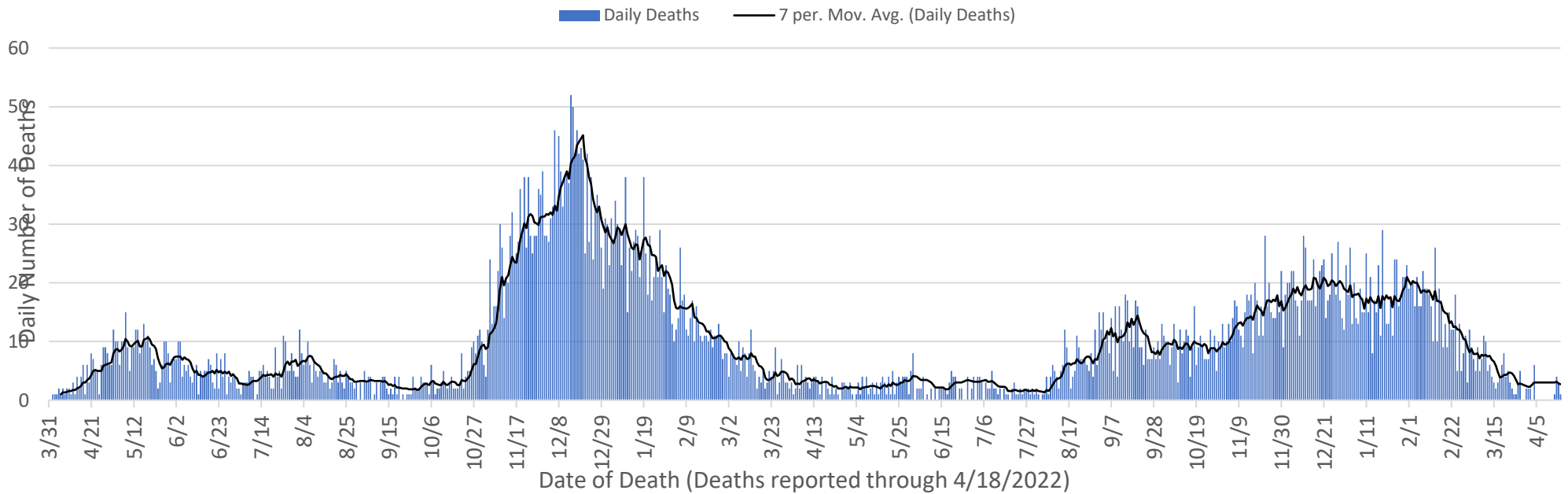
7,416

Deaths in the Last 14 Days

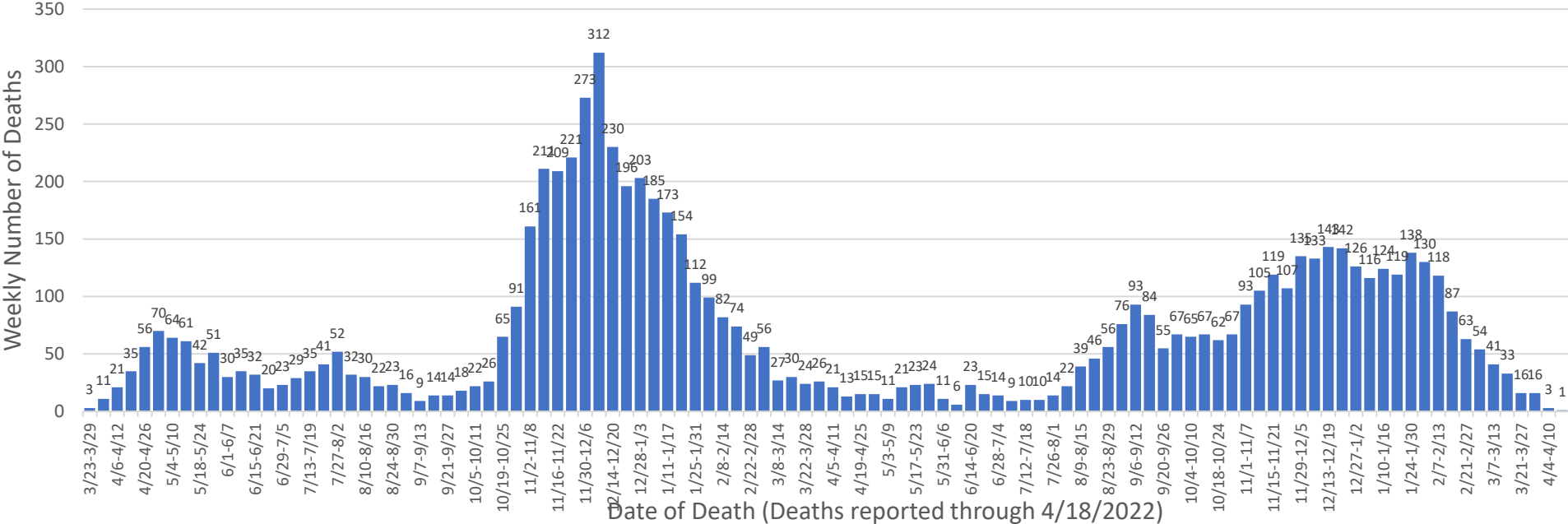
4

SECTION 1: DEATH COUNTS

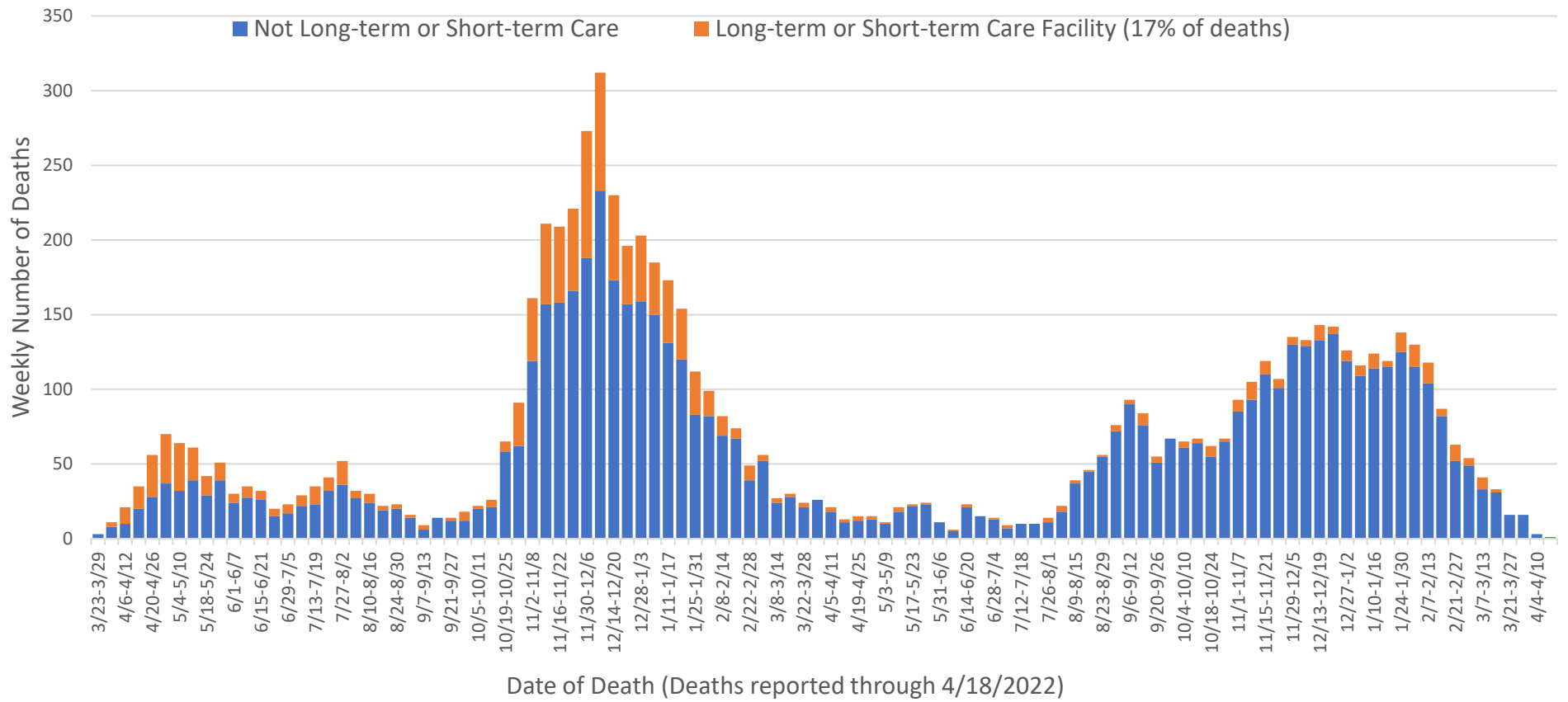
Daily Number of Deaths and 7-day Moving Average



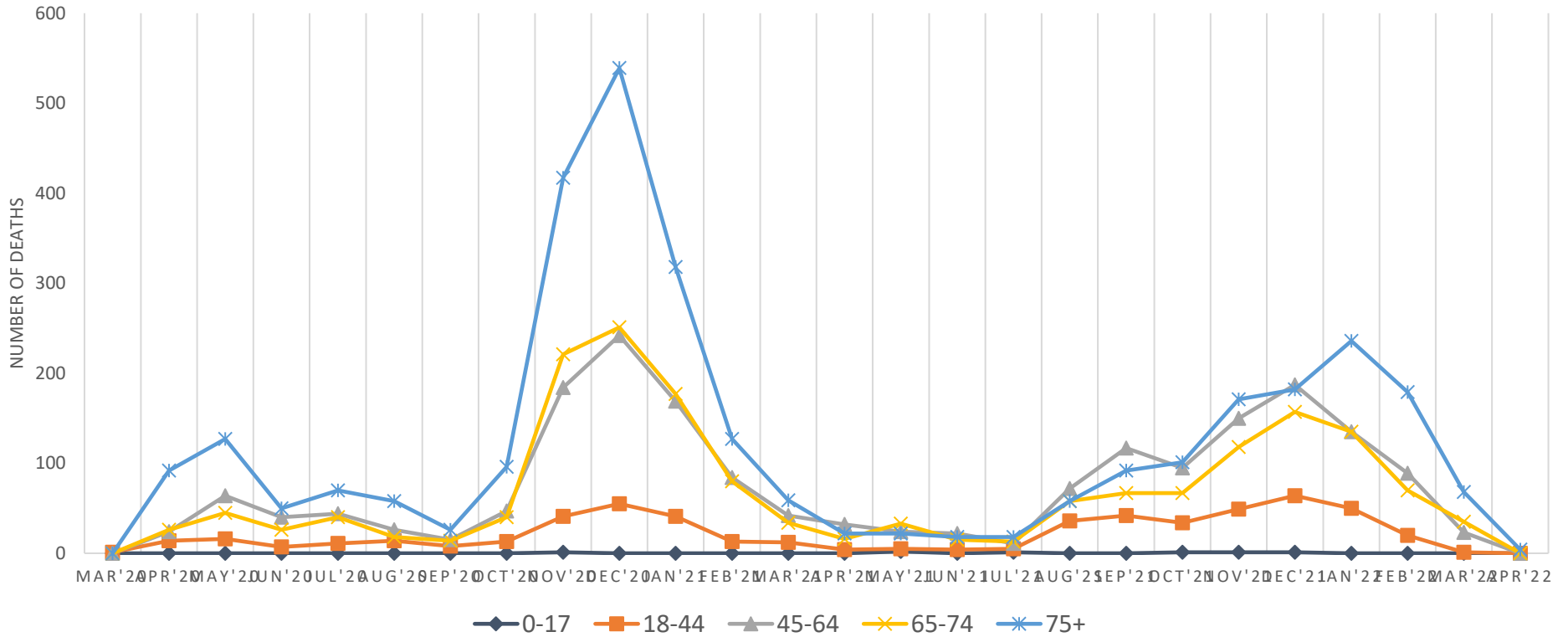
Number of Deaths Each Week



Number of Deaths Each Week by Long- and Short-term Care Facility Residence

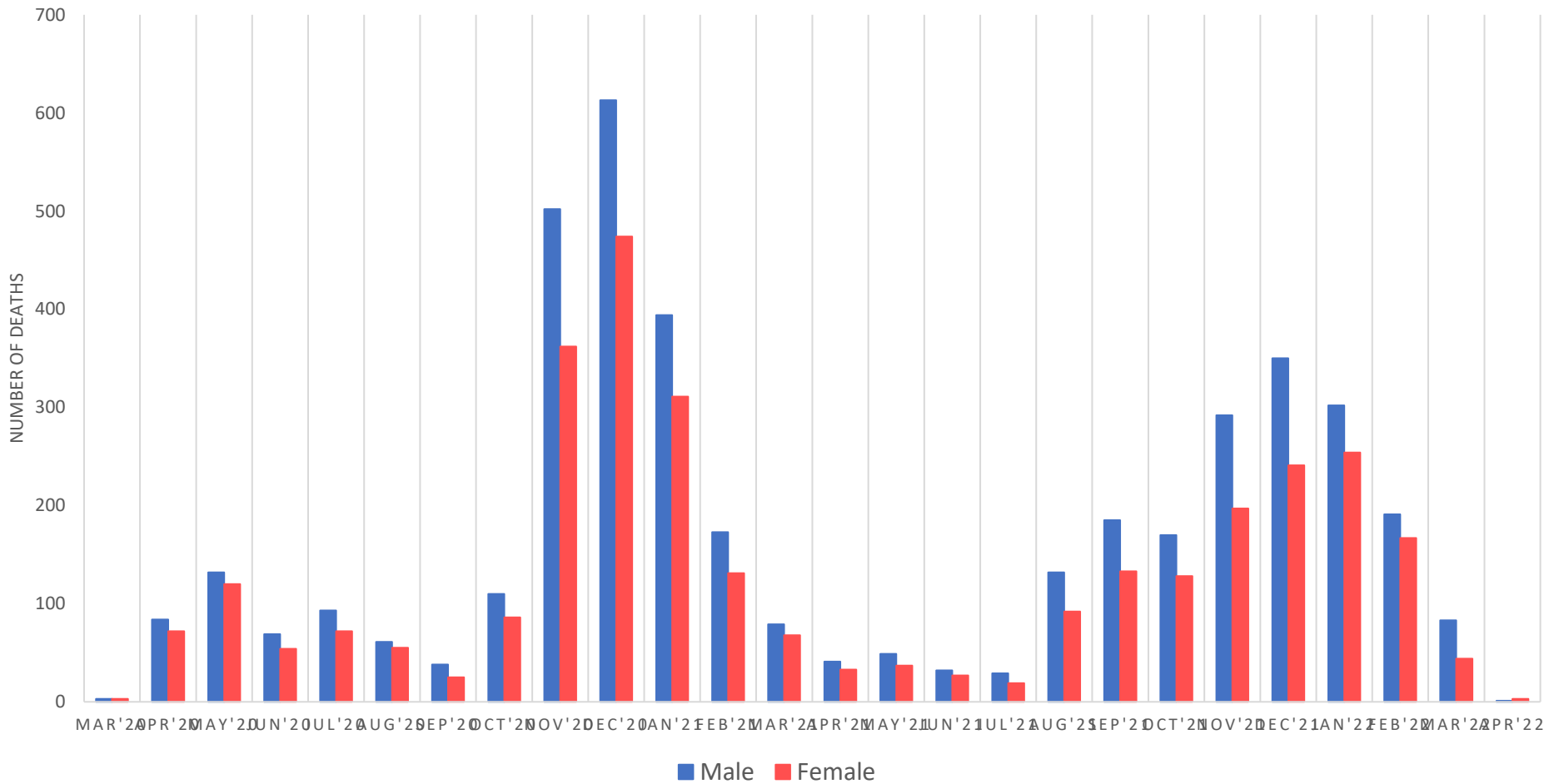


Number of Deaths by Age Group Each Month



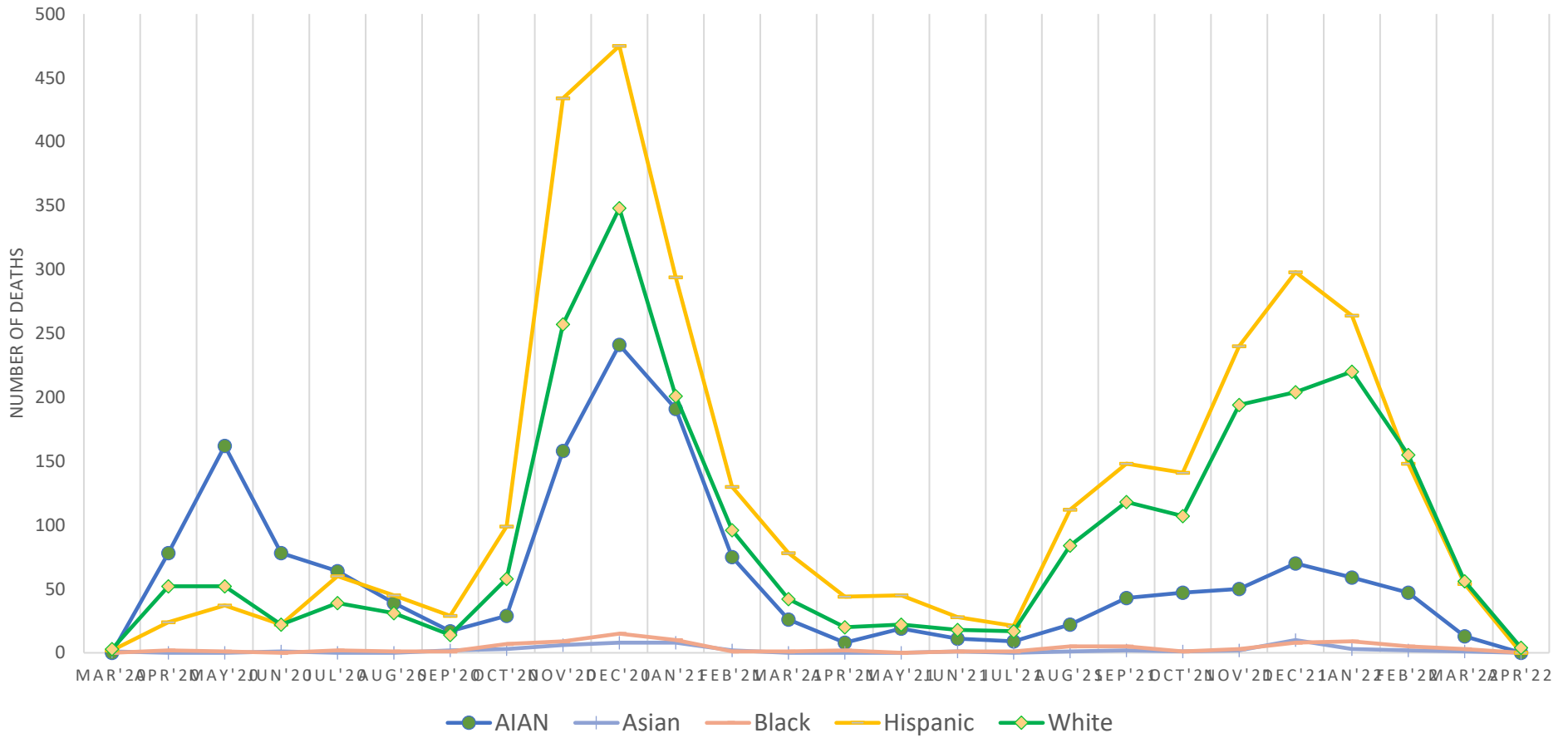
Age Group (years)	Mar'20	Apr'20	May'20	Jun'20	Jul'20	Aug'20	Sep'20	Oct'20	Nov'20	Dec'20	Jan'21	Feb'21	Mar'21	Apr'21	May'21	Jun'21	Jul'21	Aug'21	Sep'21	Oct'21	Nov'21	Dec'21	Jan'22	Feb'22	Mar'22	Apr'22	Total
0-17	0	0	0	0	0	0	0	0	1	0	0	0	0	0	2	0	1	0	0	1	1	1	0	0	0	0	7
18-44	1	14	16	7	11	14	8	13	41	55	41	13	12	4	5	4	5	36	42	34	49	64	50	20	1	0	560
45-64	0	24	64	40	44	26	15	47	184	242	169	84	42	32	24	22	11	72	117	95	150	187	135	89	23	0	1938
65-74	1	26	45	26	40	18	14	40	221	251	177	80	34	16	33	15	13	58	67	67	118	157	135	70	35	0	1757
75+	4	92	127	50	70	58	26	96	417	539	318	127	59	22	22	18	18	58	92	101	171	182	236	179	68	4	3154
Total	6	156	252	123	165	116	63	196	864	1087	705	304	147	74	86	59	48	224	318	298	489	591	556	358	127	4	7416

Number of Deaths by Gender Each Month



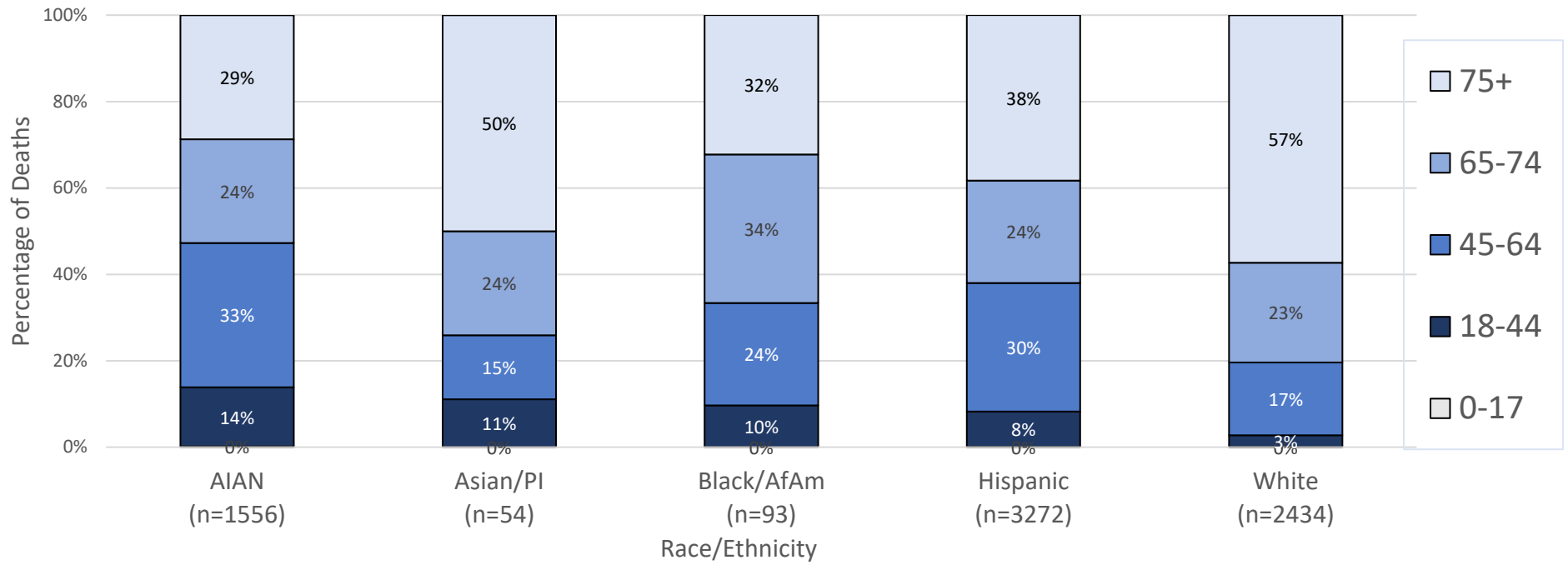
Gender	Mar'20	Apr'20	May'20	Jun'20	Jul'20	Aug'20	Sep'20	Oct'20	Nov'20	Dec'20	Jan'21	Feb'21	Mar'21	Apr'21	May'21	Jun'21	Jul'21	Aug'21	Sep'21	Oct'21	Nov'21	Dec'21	Jan'22	Feb'22	Mar'22	Apr'22	Total
Male	3	84	132	69	93	61	38	110	502	613	394	173	79	41	49	32	29	132	185	170	292	350	302	191	83	1	4208
Female	3	72	120	54	72	55	25	86	362	474	311	131	68	33	37	27	19	92	133	128	197	241	254	167	44	3	3208
Total	6	156	252	123	165	116	63	196	864	1087	705	304	147	74	86	59	48	224	318	298	489	591	556	358	127	4	7416

Number of Deaths by Race/Ethnicity Each Month

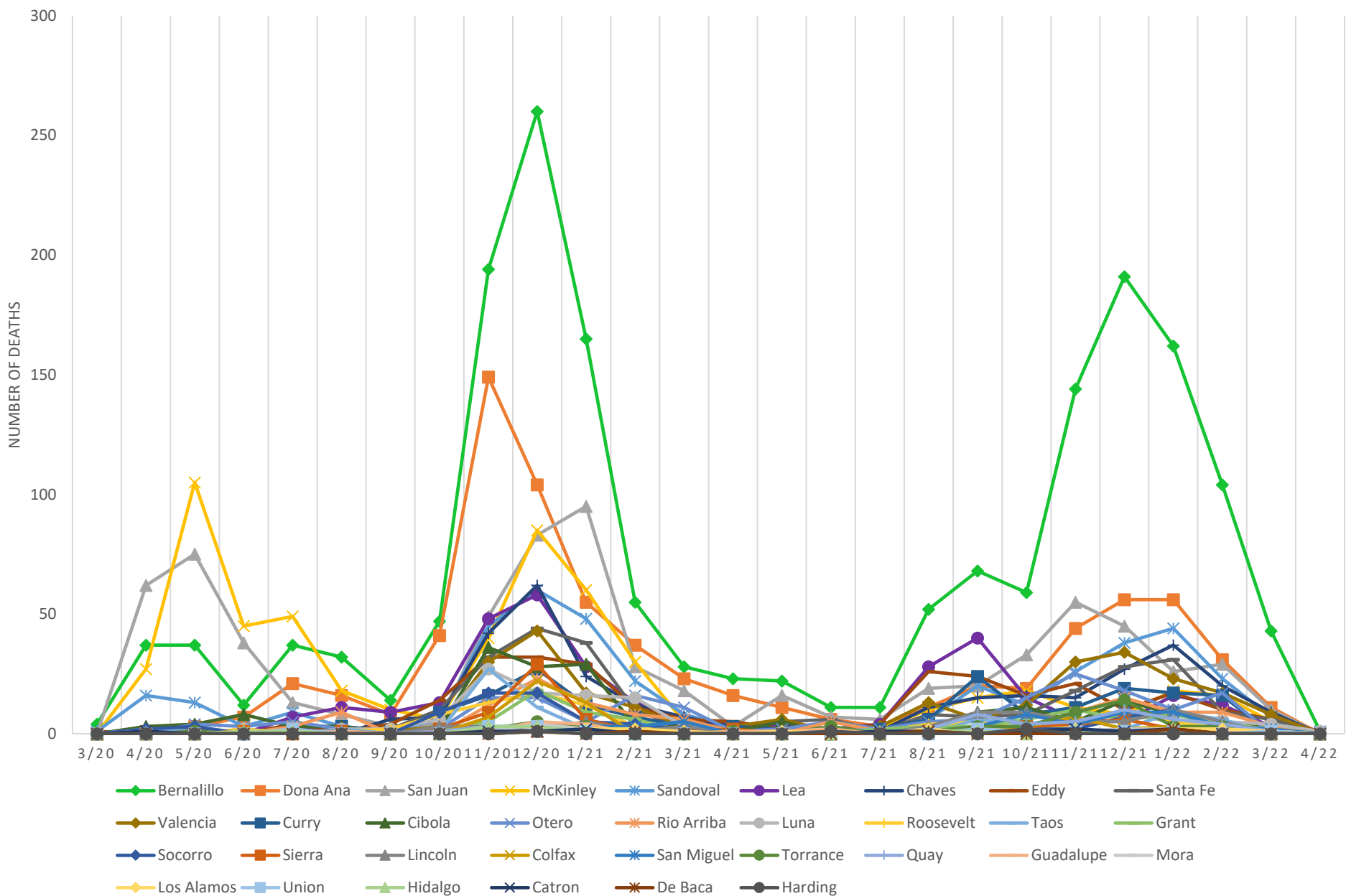


Race/Ethnicity	Mar'20	Apr'20	May'20	Jun'20	Jul'20	Aug'20	Sep'20	Oct'20	Nov'20	Dec'20	Jan'21	Feb'21	Mar'21	Apr'21	May'21	Jun'21	Jul'21	Aug'21	Sep'21	Oct'21	Nov'21	Dec'21	Jan'22	Feb'22	Mar'22	Apr'22	Total
AIAN	0	78	162	78	64	39	17	29	158	241	191	75	26	8	19	11	9	22	43	47	50	70	59	47	13	0	1556
Asian	1	0	0	1	0	0	2	3	6	8	8	2	0	0	0	1	0	1	2	1	2	10	3	2	1	0	54
Black	0	2	1	0	2	1	1	7	9	15	10	1	1	2	0	1	1	5	5	1	3	8	9	5	3	0	93
Hispanic	2	24	37	22	60	45	29	99	434	475	294	130	78	44	45	28	21	112	148	141	240	298	264	148	54	0	3272
White	3	52	52	22	39	31	14	58	257	348	201	96	42	20	22	18	17	84	118	107	194	204	220	155	56	4	2434

Percentage of Deaths by Race/Ethnicity and Age Group



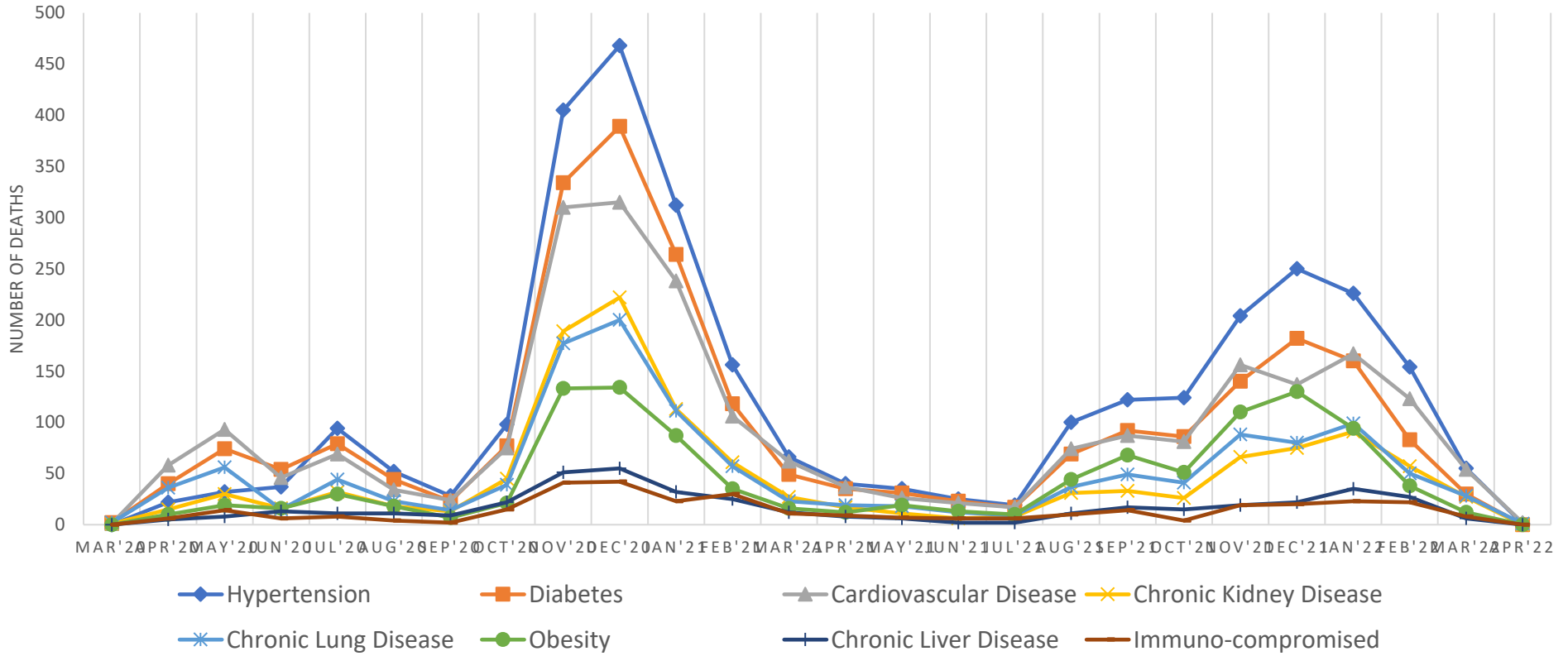
Number of deaths by New Mexico County of residence each month



Number of deaths by New Mexico County of residence each month – continued

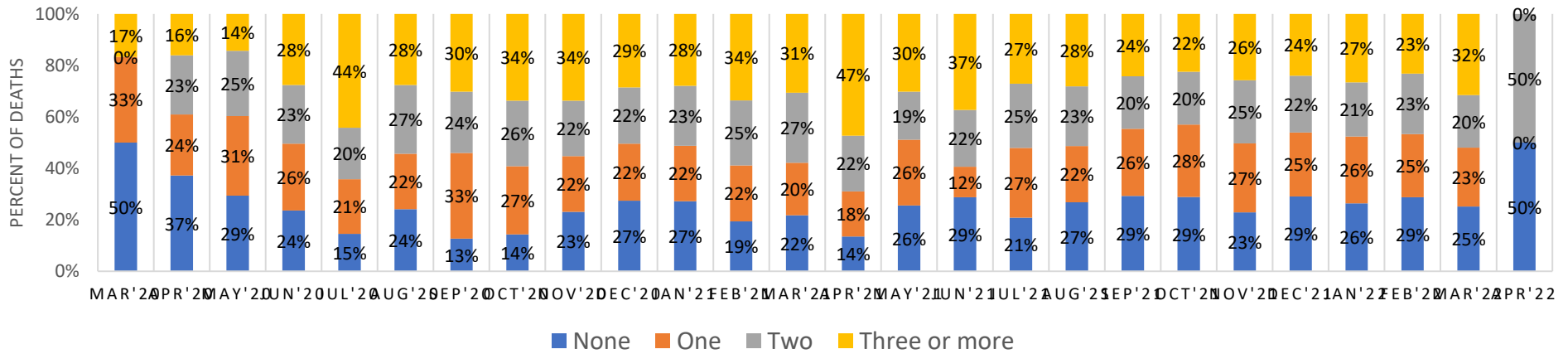
County of Residence	3/20	4/20	5/20	6/20	7/20	8/20	9/20	10/20	11/20	12/20	1/21	2/21	3/21	4/21	5/21	6/21	7/21	8/21	9/21	10/21	11/21	12/21	1/22	2/22	3/22	4/22	Total
Bernalillo	4	37	37	12	37	32	14	47	194	260	165	55	28	23	22	11	11	52	68	59	144	191	162	104	43	1	1813
Dona Ana	0	1	3	7	21	16	8	41	149	104	55	37	23	16	11	6	3	11	20	19	44	56	56	31	11	0	749
San Juan	0	62	75	38	13	8	3	4	49	83	95	28	18	3	16	7	6	19	20	33	55	45	26	29	10	0	745
McKinley	0	27	105	45	49	18	10	6	40	85	60	30	5	1	2	1	2	10	15	18	11	8	18	16	5	0	587
Sandoval	1	16	13	3	9	3	1	6	45	60	48	22	8	3	3	1	2	6	20	12	26	38	44	23	7	0	420
Lea	0	0	0	0	7	11	9	13	48	58	28	13	5	3	4	2	4	28	40	15	6	5	16	12	3	0	330
Chaves	0	1	2	0	3	0	6	7	42	62	24	12	7	3	1	2	1	11	15	16	15	27	37	20	9	0	323
Eddy	1	0	0	0	4	1	4	14	32	32	29	11	6	5	2	1	4	26	24	16	21	10	17	10	6	1	277
Santa Fe	0	2	2	0	0	1	2	10	32	44	38	10	2	1	5	6	1	8	7	8	18	28	31	9	6	0	271
Valencia	0	0	1	0	2	0	1	3	30	43	17	11	3	3	6	1	3	13	6	12	30	34	23	17	8	0	267
Curry	0	0	0	0	3	3	1	9	16	27	12	7	3	3	2	0	2	6	24	8	11	19	17	16	0	0	189
Cibola	0	3	4	8	3	3	0	2	36	28	29	3	3	1	5	0	0	3	9	11	5	14	8	5	3	0	186
Otero	0	0	4	3	5	2	0	2	15	15	5	16	11	1	2	5	2	5	6	15	25	18	10	17	0	1	185
Rio Arriba	0	0	1	0	3	9	0	0	12	23	13	8	6	1	0	5	1	2	0	3	9	15	9	9	3	0	132
Luna	0	1	0	2	0	2	2	6	27	17	16	15	3	1	0	0	0	1	1	4	5	8	5	5	4	1	126
Roosevelt	0	0	0	2	0	1	2	8	13	17	12	3	1	0	0	0	1	4	5	2	4	10	5	2	0	0	92
Taos	0	2	1	0	0	2	0	1	27	11	2	4	2	1	0	1	2	0	6	4	7	2	9	6	0	0	90
Grant	0	0	0	0	1	0	0	2	5	18	9	6	1	0	0	0	2	3	3	6	10	6	8	4	2	0	86
Socorro	0	2	3	0	1	0	0	9	17	17	5	4	2	0	1	0	0	1	1	2	2	7	10	2	0	0	86
Sierra	0	0	0	1	0	1	0	2	9	29	6	1	1	2	0	0	0	1	1	3	4	6	2	1	0	0	70
Lincoln	0	0	0	0	1	1	0	3	3	1	5	1	3	0	1	1	0	3	9	9	5	5	10	5	0	0	66
Colfax	0	0	0	1	0	0	0	0	7	22	13	0	0	1	0	2	0	0	1	3	7	2	3	2	0	0	64
San Miguel	0	0	0	0	0	0	0	0	2	4	3	3	5	0	0	0	0	1	3	8	4	9	9	3	2	0	56
Torrance	0	0	1	0	0	0	0	0	2	5	3	1	0	1	0	3	0	1	3	3	9	14	3	3	1	0	53
Quay	0	1	0	0	0	1	0	1	3	3	1	0	0	0	1	0	0	2	8	4	5	10	6	4	1	0	51
Guadalupe	0	0	0	0	0	1	0	0	1	5	4	0	0	1	1	2	0	0	0	0	0	0	1	1	0	0	17
Mora	0	0	0	0	0	0	0	0	1	4	2	0	0	0	0	1	0	2	0	1	1	2	2	0	1	0	17
Los Alamos	0	0	0	0	0	0	0	0	0	1	2	2	1	0	1	0	0	2	0	0	2	0	2	2	1	0	16
Union	0	0	0	0	2	0	0	0	3	3	1	0	0	0	0	0	0	0	2	1	1	1	1	0	1	0	16
Hidalgo	0	0	0	1	1	0	0	0	3	3	1	0	0	0	0	0	0	1	1	0	1	0	2	0	0	0	14
Catron	0	1	0	0	0	0	0	0	1	1	2	0	0	0	0	0	1	1	0	1	2	1	2	0	0	0	13
De Baca	0	0	0	0	0	0	0	0	0	1	0	1	0	0	0	0	0	1	0	0	0	0	2	0	0	0	5
Harding	0	0	0	0	0	0	0	0	0	1	0	0	0	0	0	1	0	0	0	2	0	0	0	0	0	0	4
Total	6	156	252	123	165	116	63	196	864	1087	705	304	147	74	86	59	48	224	318	298	489	591	556	358	127	4	7416

Number of Deaths by Underlying Conditions Each Month



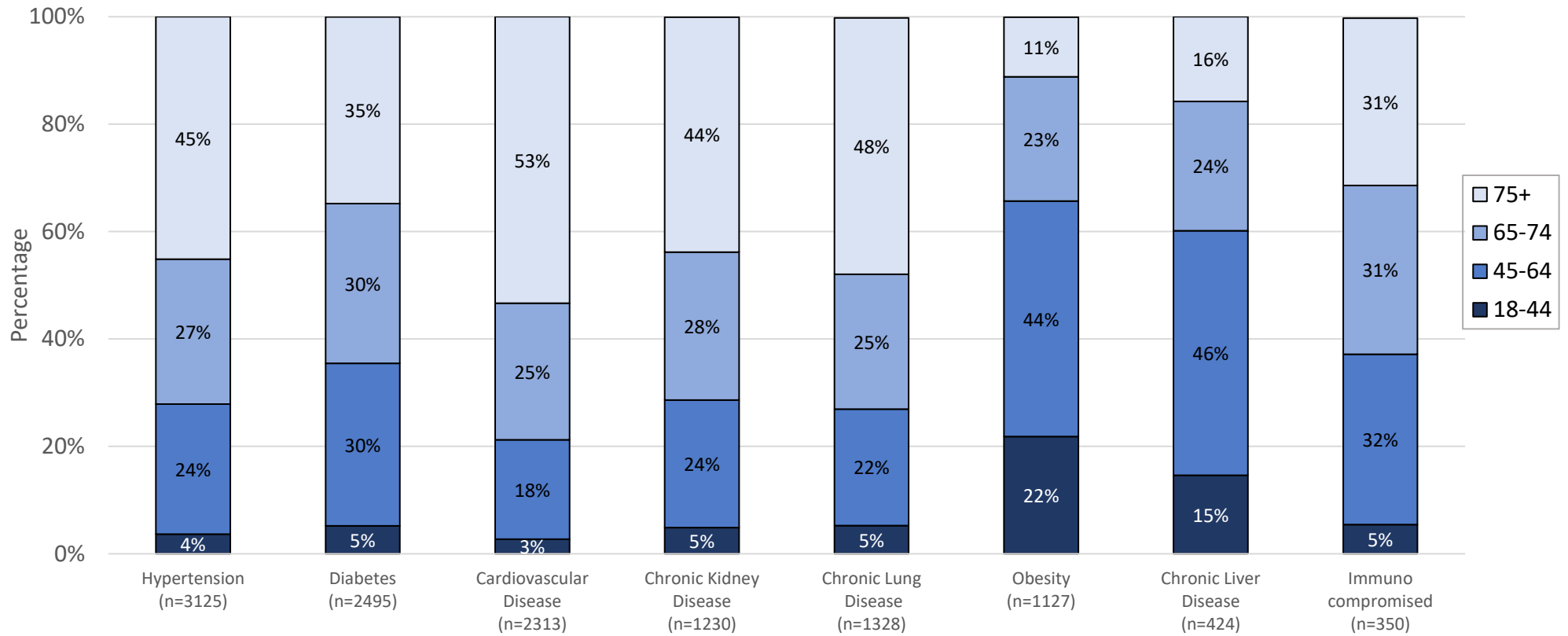
Underlying Conditions	Mar'20	Apr'20	May'20	Jun'20	Jul'20	Aug'20	Sep'20	Oct'20	Nov'20	Dec'20	Jan'21	Feb'21	Mar'21	Apr'21	May'21	Jun'21	Jul'21	Aug'21	Sep'21	Oct'21	Nov'21	Dec'21	Jan'22	Feb'22	Mar'22	Apr'22	Total
Hypertension	0	22	32	37	94	52	28	98	405	468	312	156	66	40	35	25	19	100	122	124	204	250	226	154	55	1	3125
Diabetes	2	40	74	54	79	44	23	77	334	389	264	118	49	35	31	23	17	69	92	86	140	182	160	83	30	0	2495
Cardiovascular Disease	1	58	93	46	69	34	24	75	310	315	238	106	62	37	26	21	17	74	87	81	156	137	167	123	54	2	2413
Chronic Kidney Disease	1	15	30	16	32	18	13	45	189	222	113	61	27	17	11	6	8	31	33	26	66	75	91	57	27	0	1230
Chronic Lung Disease	2	36	56	15	44	23	14	39	177	200	111	57	23	19	18	12	9	37	49	41	88	80	99	50	28	1	1328
Obesity	0	10	19	16	30	18	7	21	133	134	87	35	16	12	19	13	10	44	68	51	110	130	94	38	12	0	1127
Chronic Liver Disease	0	5	8	13	11	11	9	22	51	55	32	25	12	8	6	2	2	11	17	15	19	22	35	27	6	0	424
Immuno-compromised	0	6	14	6	8	4	2	15	41	42	23	30	11	9	7	6	6	10	14	4	19	20	23	22	8	0	350

Percentage and Number of Deaths Each Month by Number of Underlying Conditions Reported



Number of Underlying Conditions	Mar'20	Apr'20	May'20	Jun'20	Jul'20	Aug'20	Sep'20	Oct'20	Nov'20	Dec'20	Jan'21	Feb'21	Mar'21	Apr'21	May'21	Jun'21	Jul'21	Aug'21	Sep'21	Oct'21	Nov'21	Dec'21	Jan'22	Feb'22	Mar'22	Apr'22	Total
None	3	58	74	29	24	28	8	28	200	298	192	59	32	10	22	17	10	60	93	86	112	172	147	103	32	2	1899
One	2	37	78	32	35	25	21	52	187	241	152	66	30	13	22	7	13	49	83	84	131	147	144	88	29	0	1768
Two	0	36	64	28	33	31	15	50	186	238	164	77	40	16	16	13	12	52	65	61	120	130	117	84	26	2	1676
Three or more	1	25	36	34	73	32	19	66	291	310	197	102	45	35	26	22	13	63	77	67	126	142	148	83	40	0	2073
Total	6	156	252	123	165	116	63	196	864	1087	705	304	147	74	86	59	48	224	318	298	489	591	556	358	127	4	7416

Percentage of Deaths by Underlying Condition and Age Group



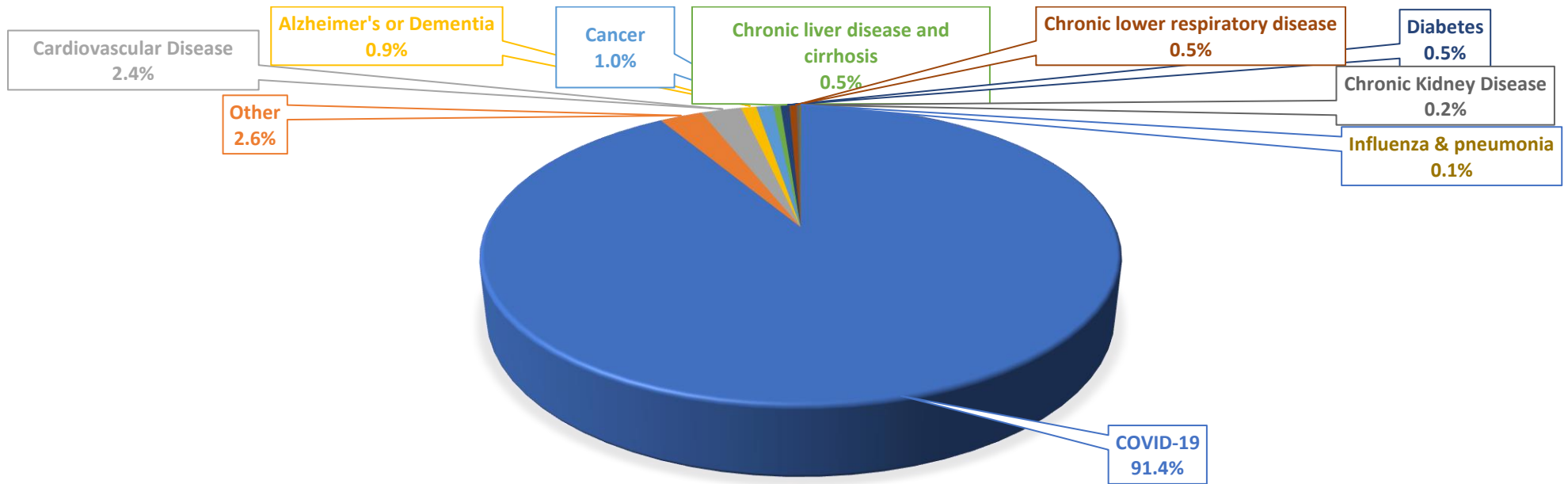
Number and percent of deaths by Test Result and Cause of Death on the Death Certificate

Positive COVID-19 Test Result ¹	COVID-19 Cause/Contributor of Death on Death Certificate	Number of Deaths	Percent
Yes	Yes	6961	93.9%
Yes	No	127 ²	1.7%
Yes	Pending	13	0.2%
No	Yes	315	4.2%
Total		7416	100.0%

¹ Positive RT-PCR or Rapid Test

² Beginning January 1, 2022, deaths due to natural causes matched to a SARS-CoV-2 positive test result within 30 days of the date of death are included as COVID-19 related deaths even when COVID is not listed on the death certificate.

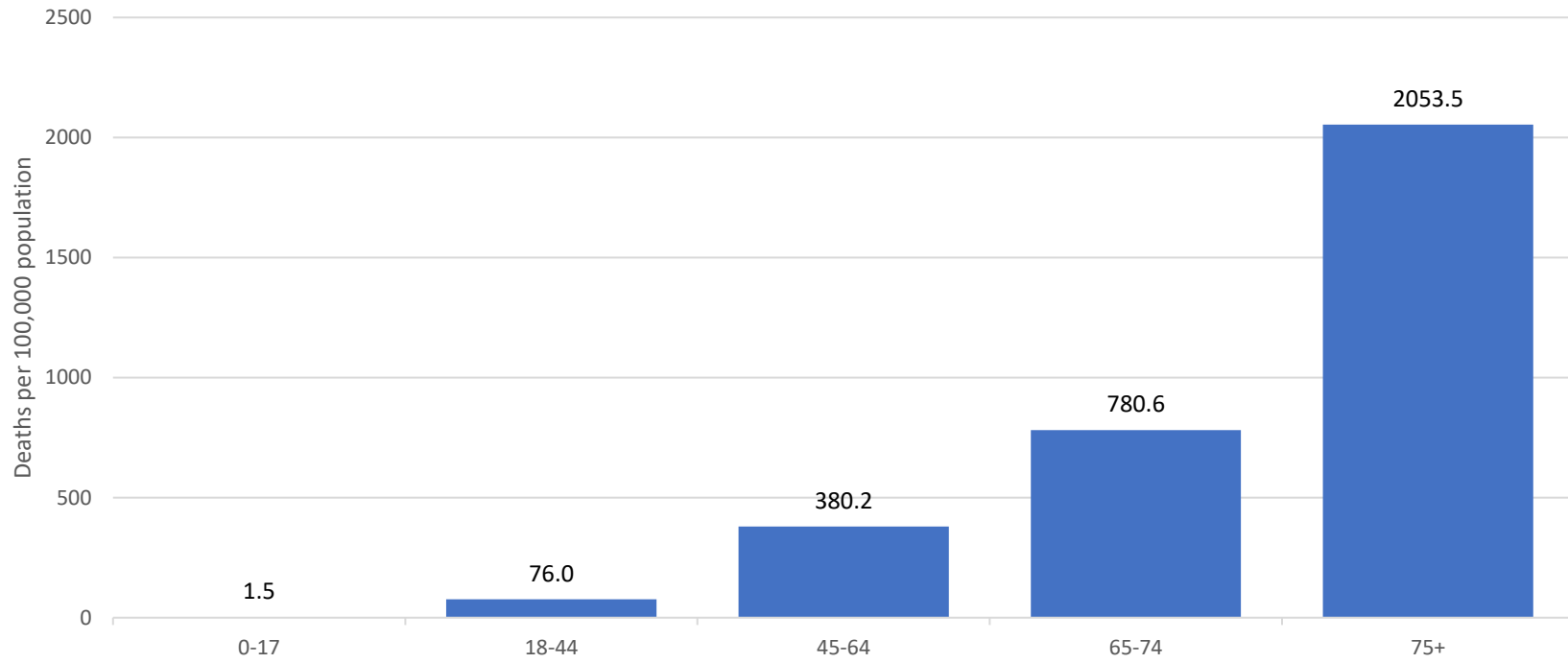
Number and percent of deaths by underlying cause of death on the death certificate



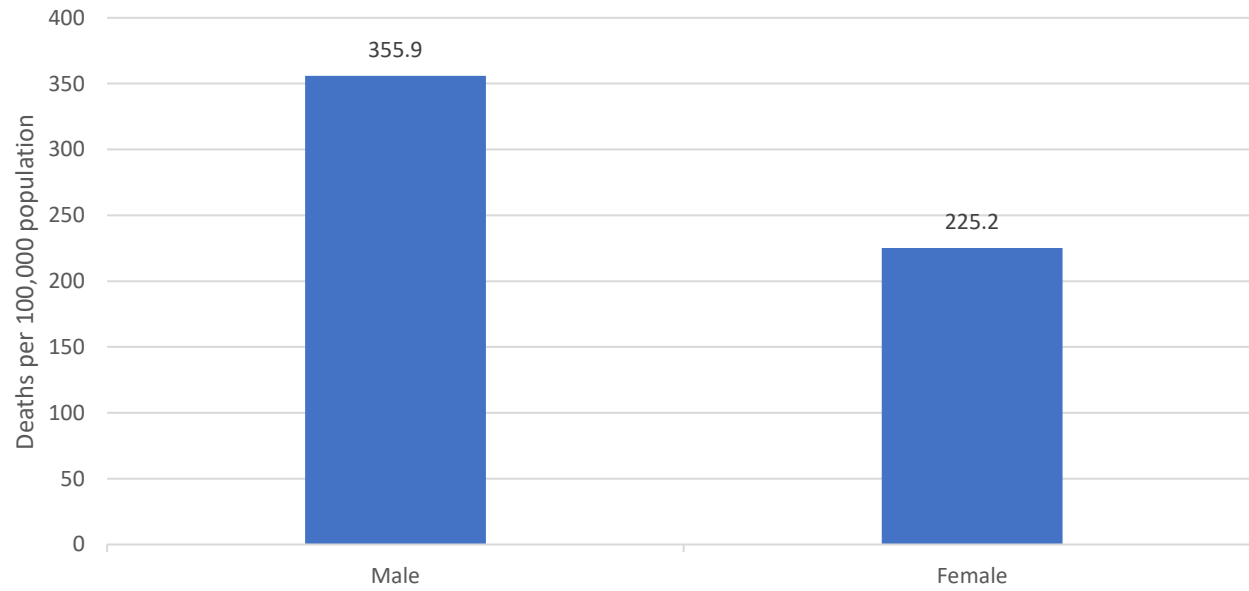
Underlying Cause	Number of Deaths*	Percent
COVID-19	6625	91.5%
Other	188	2.6%
Cardiovascular Disease	177	2.4%
Alzheimer's or Dementia	67	0.9%
Cancer	73	1.0%
Chronic liver disease and cirrhosis	33	0.4%
Diabetes	38	0.5%
Chronic lower respiratory disease	33	0.5%
Chronic Kidney Disease	12	0.2%
Influenza & pneumonia	5	0.1%
Total	7251	100.0%
*Excludes 165 (2%) deaths which have not yet been coded by the National Center for Health Statistics.		

SECTION 2: MORTALITY RATES

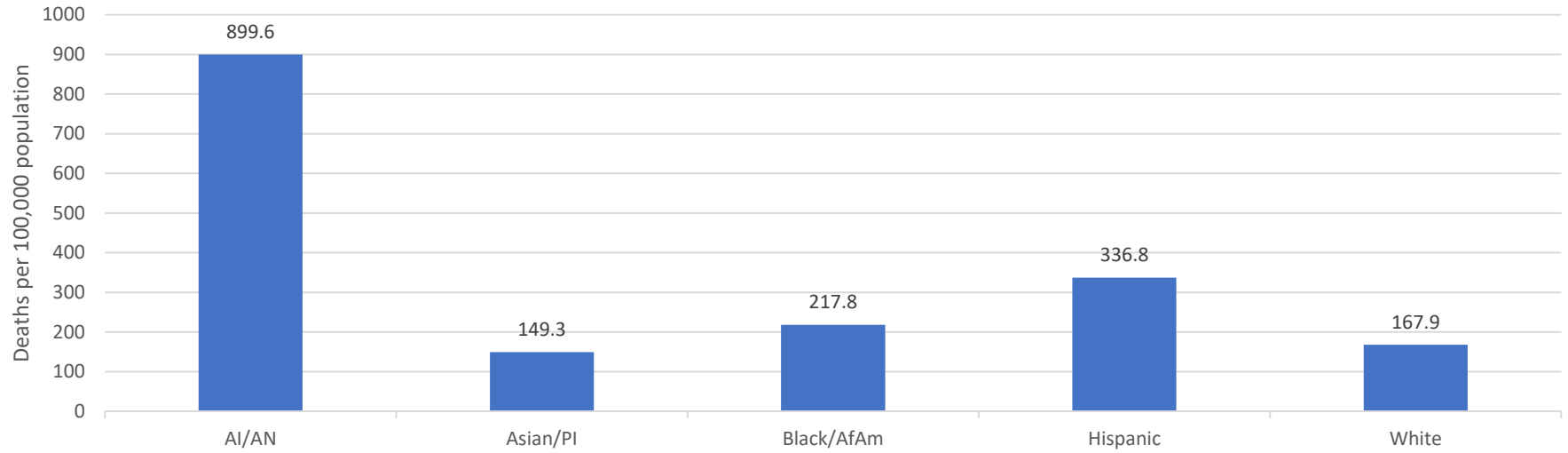
Mortality Rate per 100,000 Population by Age Group



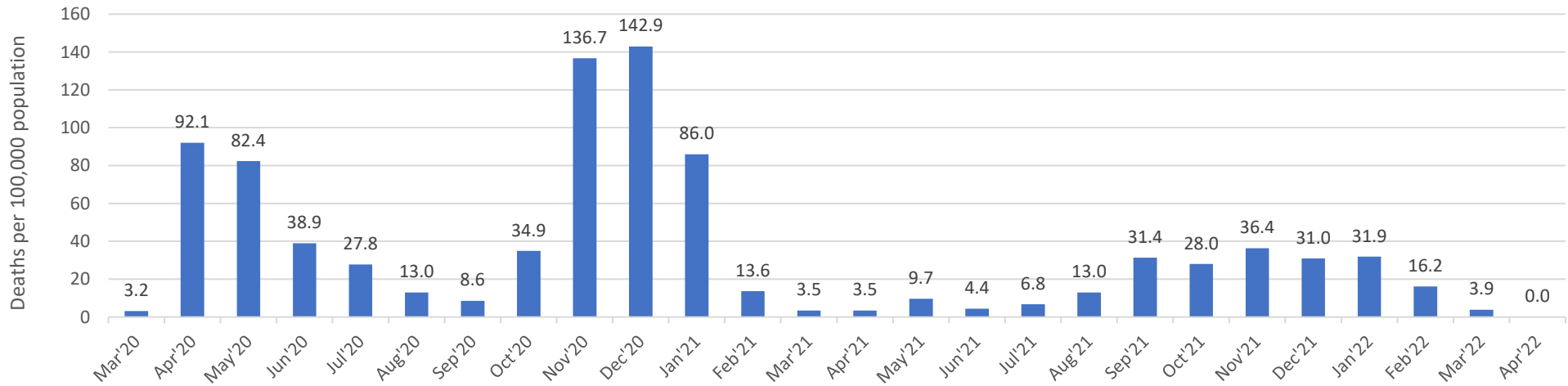
Age-adjusted Mortality Rate per 100,000 Population by Gender



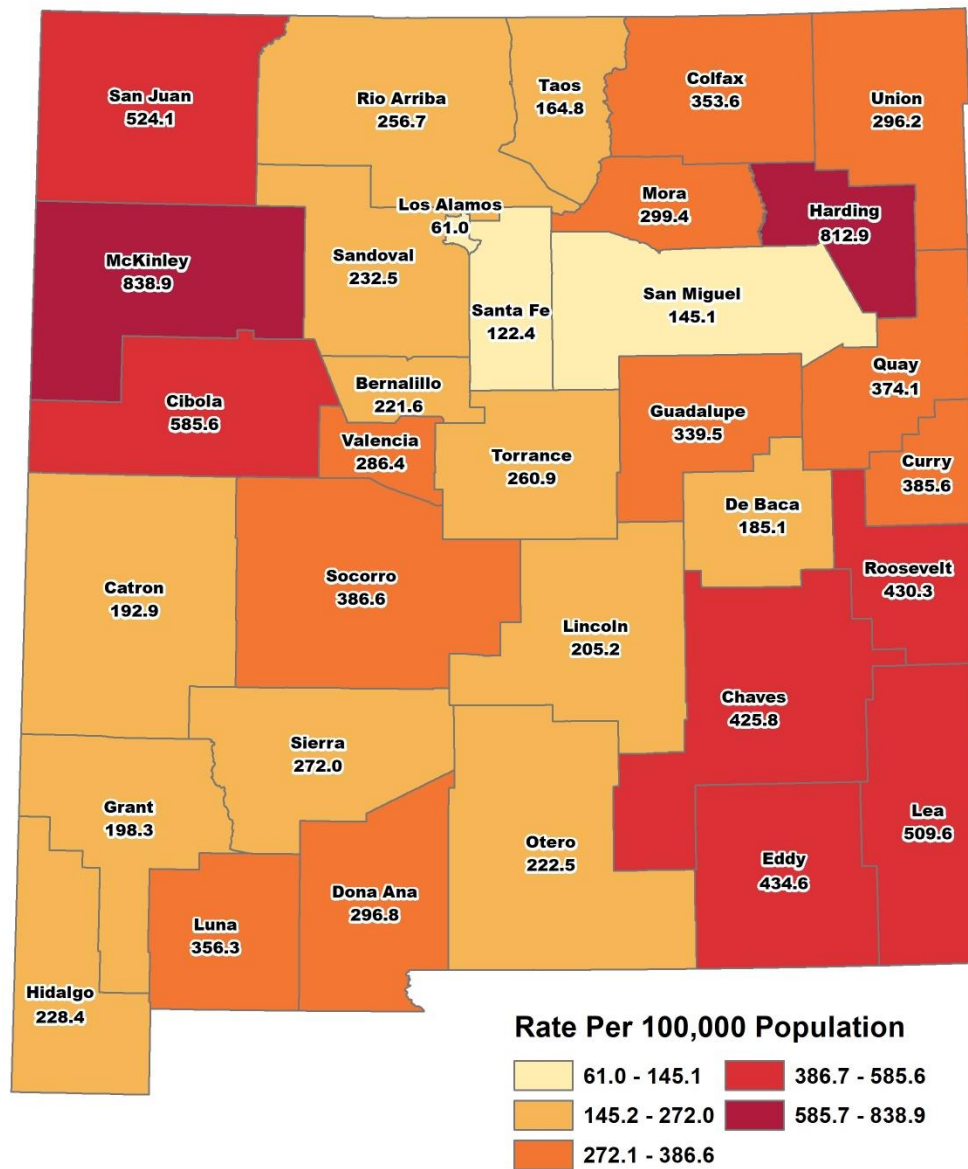
Age-adjusted Mortality rate per 100,000 Population by Race/Ethnicity



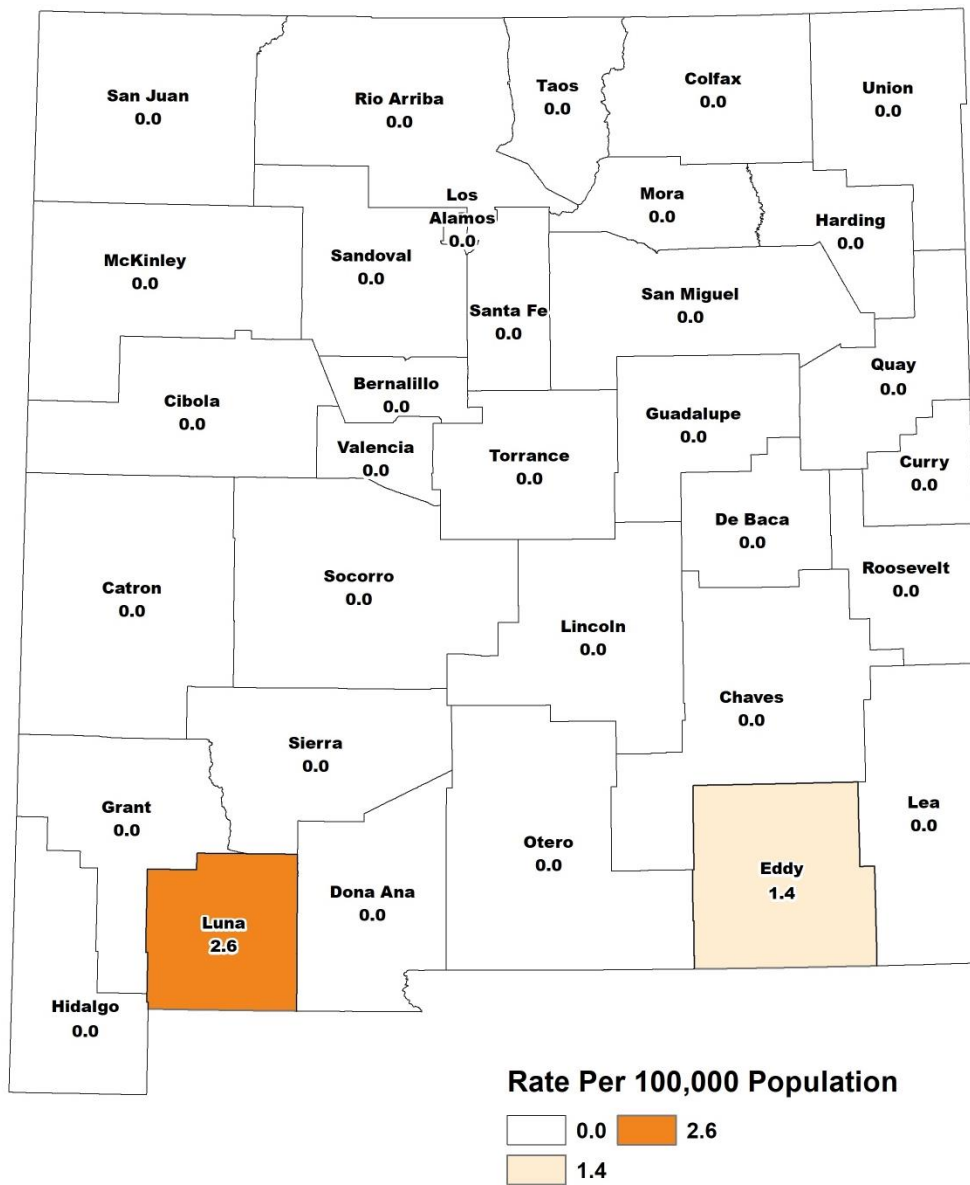
Age-adjusted Mortality rate among AI/AN by Month of 1st Positive Test



Age-adjusted Mortality Rate per 100,000 Population by New Mexico County

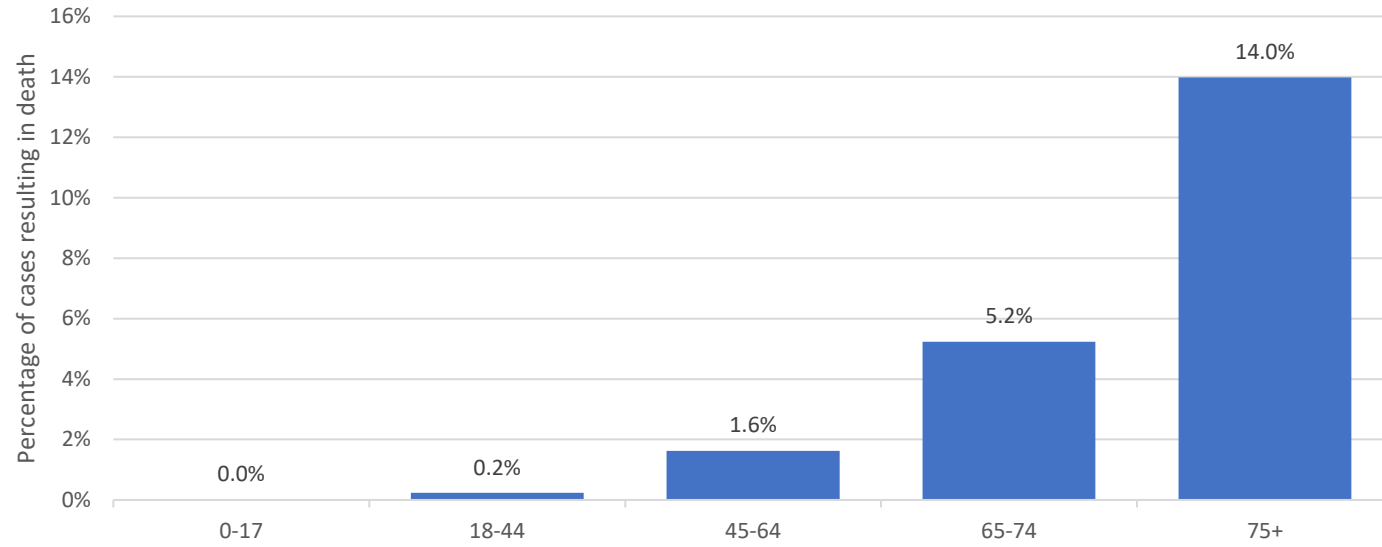


Age-adjusted Mortality Rate per 100,000 Population by County (last 14 days)

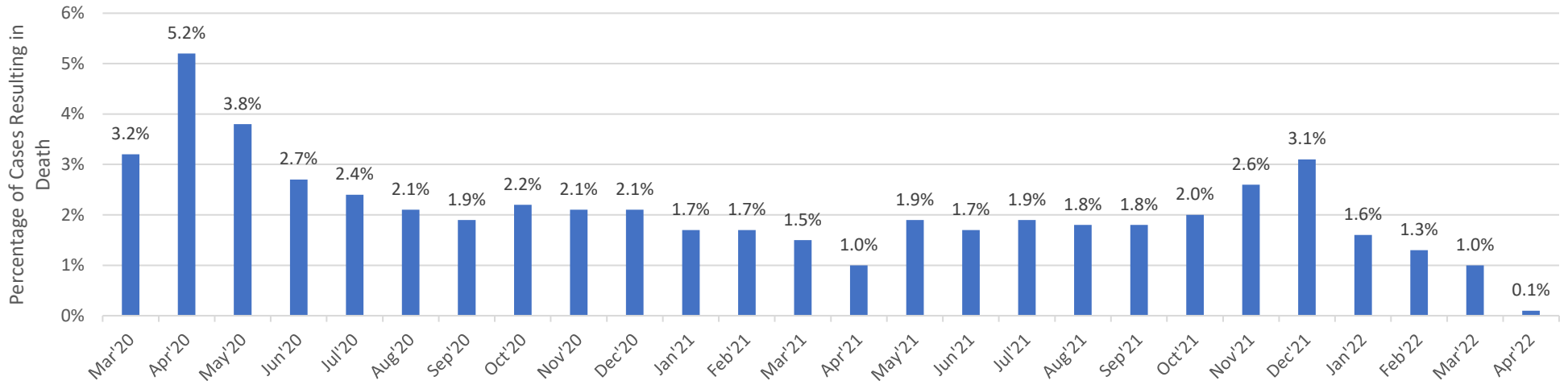


SECTION 3: CASE FATALITY RATES

Case Fatality Rate by Age Group



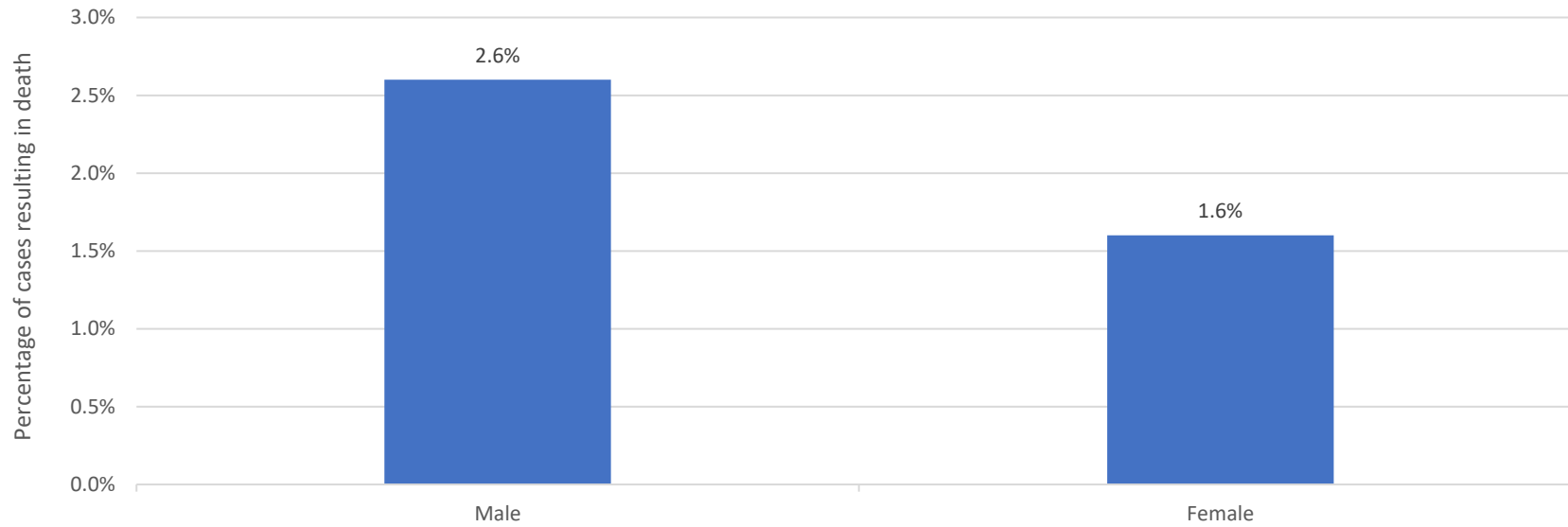
Age-adjusted* Case Fatality Case Fatality Rate by Month of 1st Positive Test



*Age-adjusted case fatality rates are adjusted to the current distribution of U.S. COVID-19 cases.

<https://covid.cdc.gov/covid-data-tracker/#demographics>

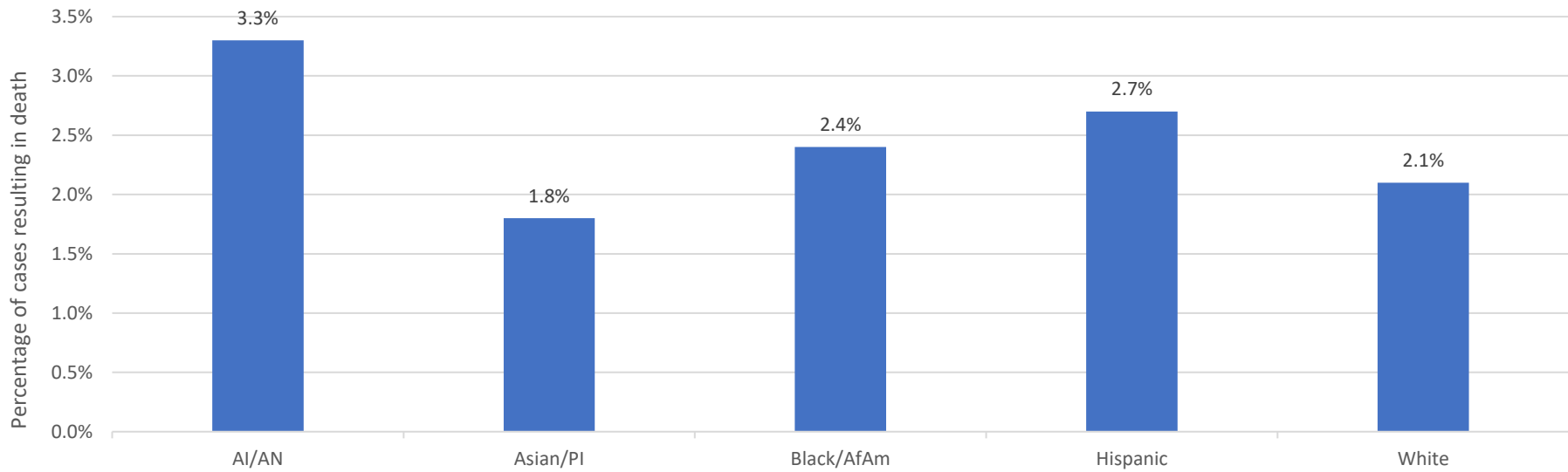
Age-adjusted* Case Fatality Rate by Gender



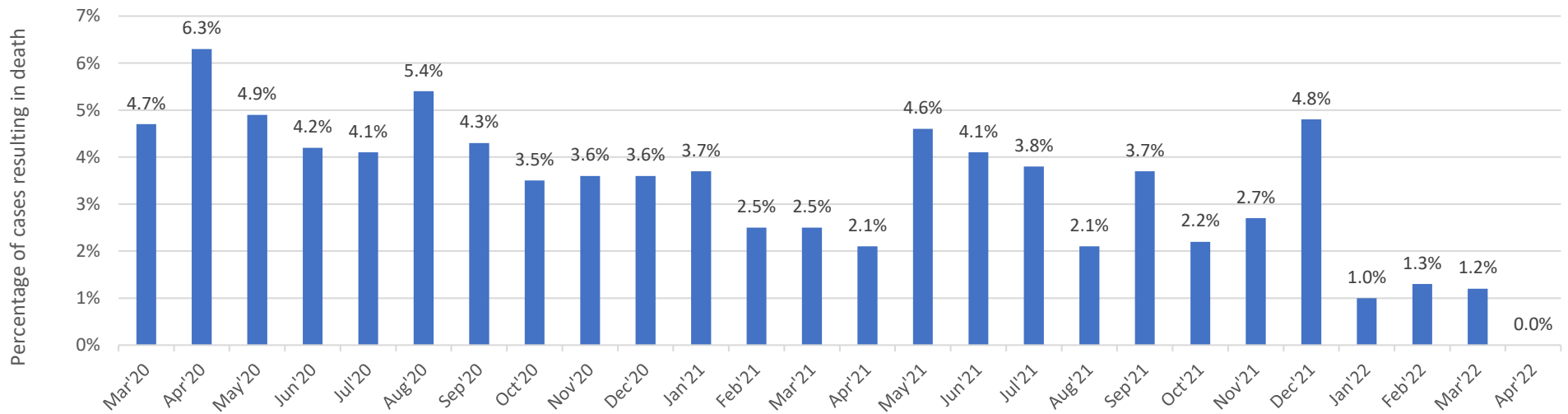
*Age-adjusted case fatality rates are adjusted to the current distribution of U.S. COVID-19 cases.

<https://covid.cdc.gov/covid-data-tracker/#demographics>

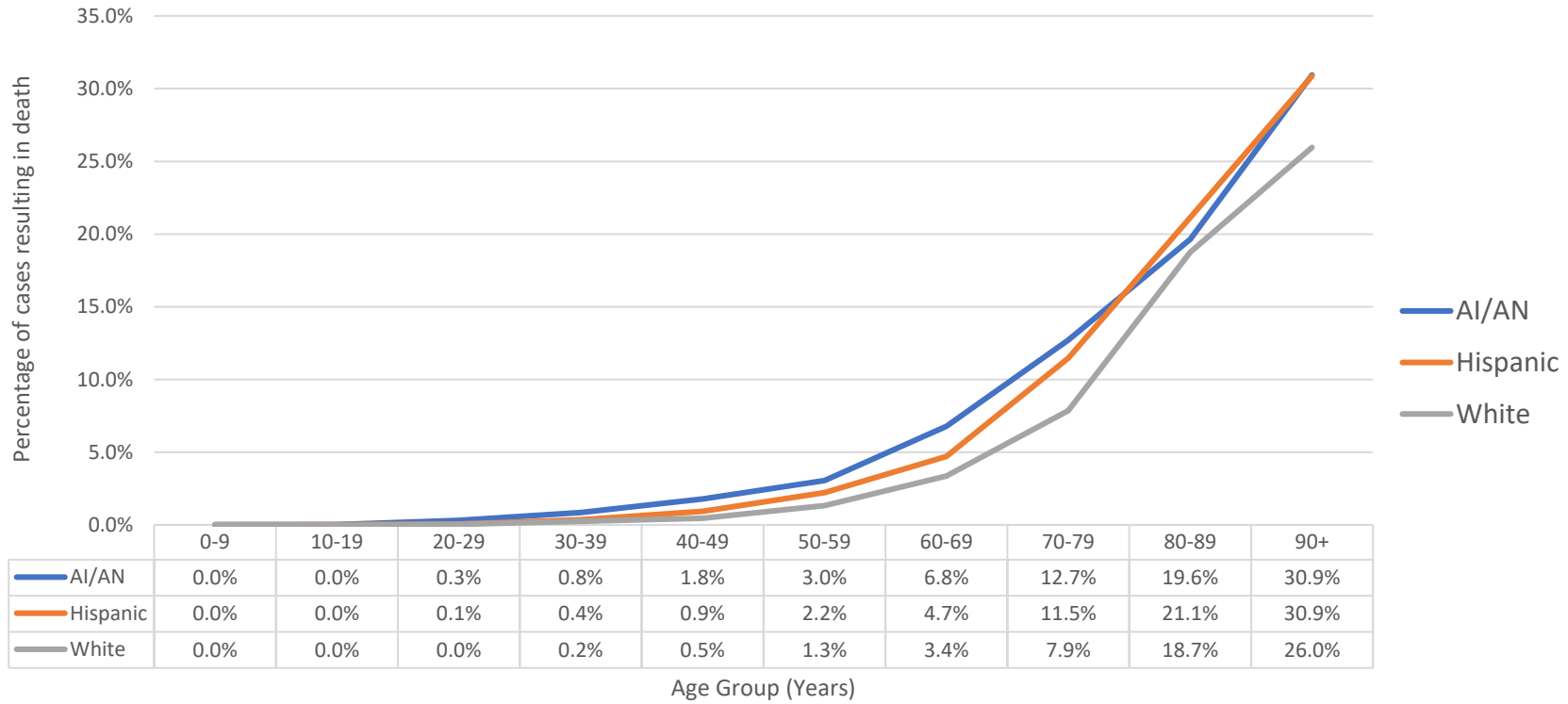
Age-adjusted* Case Fatality Rate by Race/Ethnicity



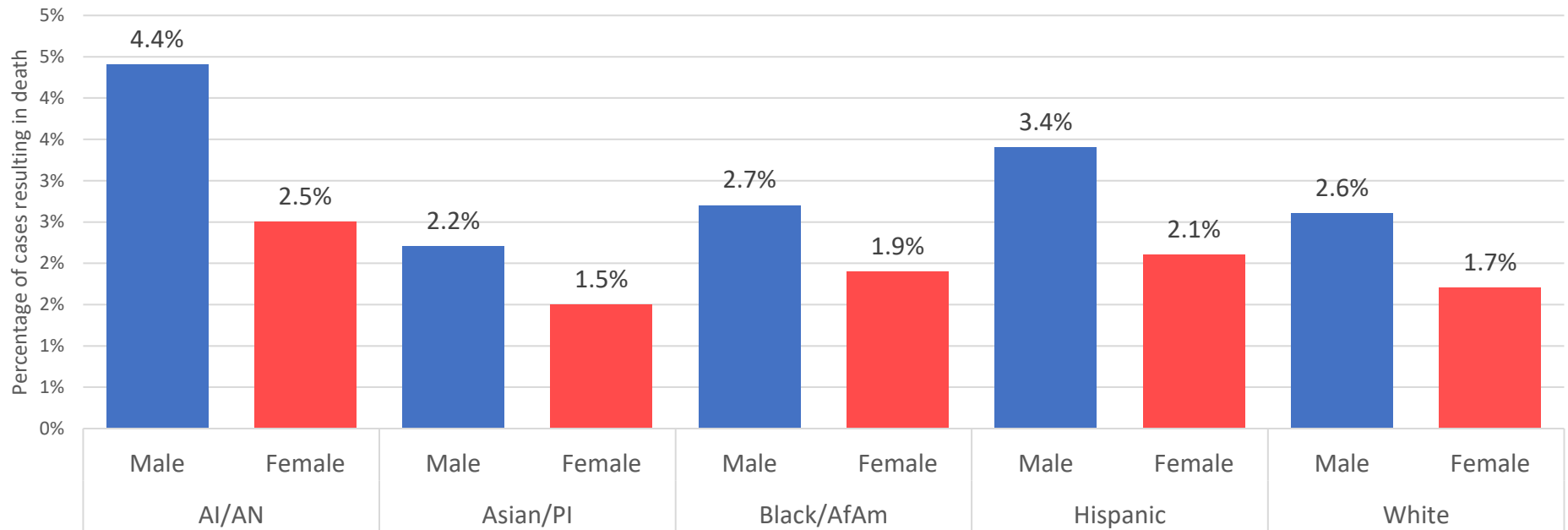
Age-adjusted* Case Fatality Rate Among AI/AN, by Month of 1st Positive Test



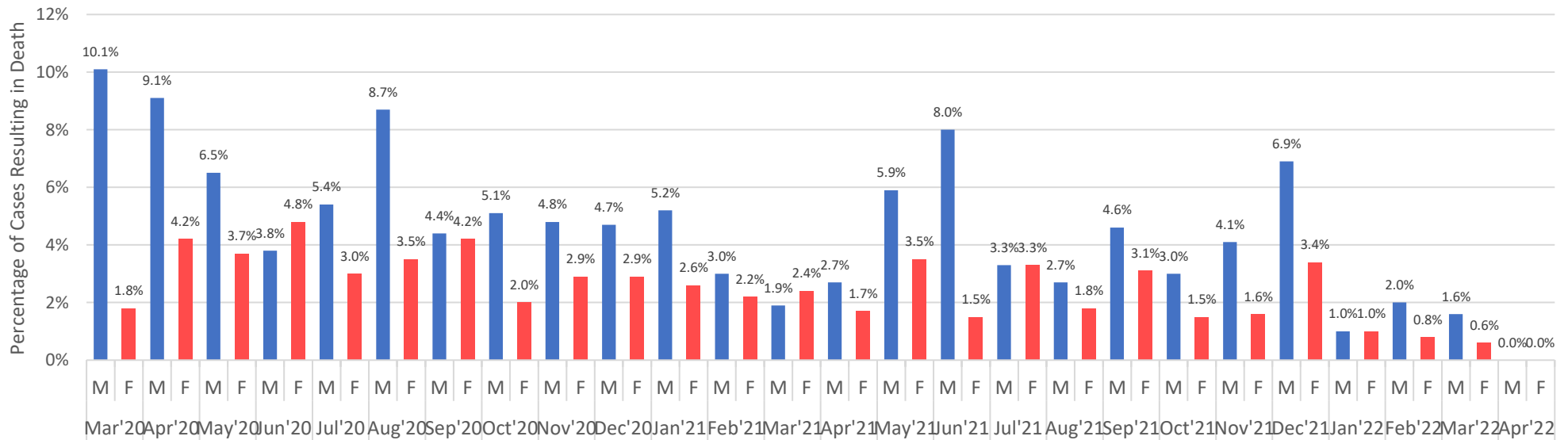
Case Fatality Rate by Race/Ethnicity and Age Group



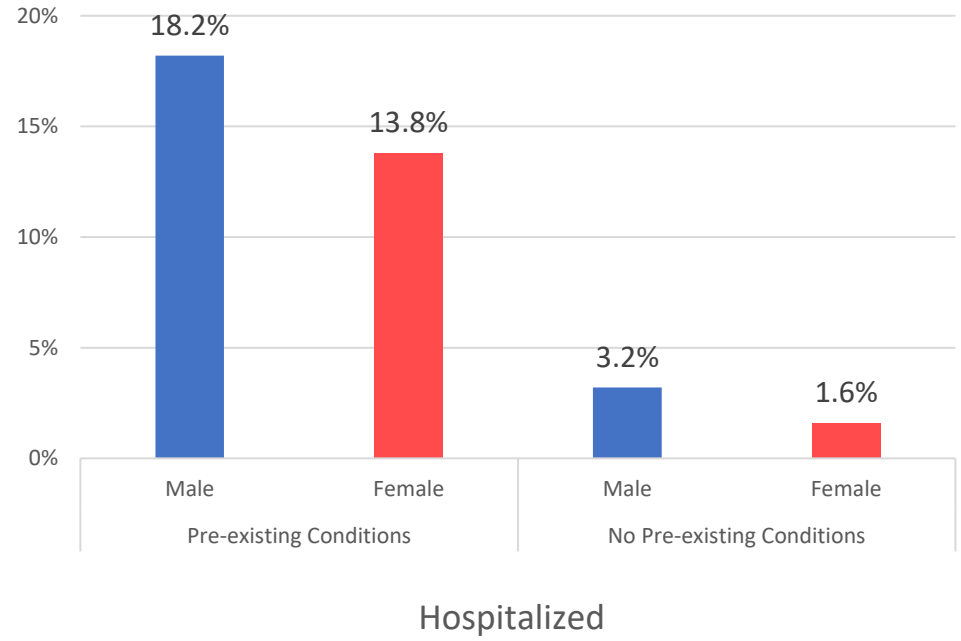
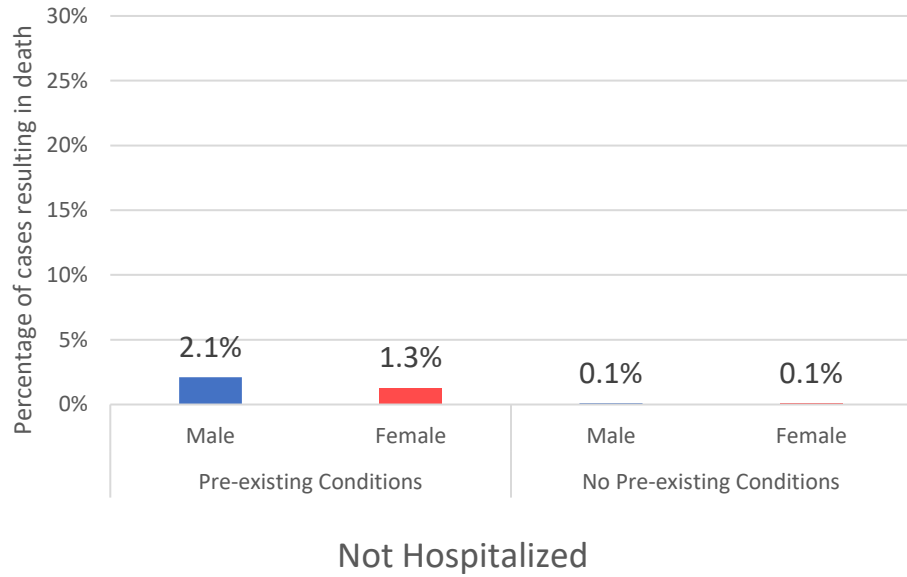
Age-adjusted* Case Fatality Rate by Race/Ethnicity and Gender



Age-adjusted* Case Fatality Rate Among AI/AN, by Month of 1st Positive Test and Gender



Age-adjusted* Case Fatality Rate by Gender, Underlying Conditions, and Hospitalization Status



*Age-adjusted case fatality rates are adjusted to the current distribution of U.S. COVID-19 cases.
<https://covid.cdc.gov/covid-data-tracker/#demographics>

Data Sources

- **COVID-19 data:** New Mexico Electronic Disease Surveillance System (NM-EDSS), Infectious Disease Epidemiology Bureau, Epidemiology and Response Division, New Mexico Department of Health.
- **Mortality data:** Bureau of Vital Records and Health Statistics, Epidemiology and Response Division, New Mexico Department of Health.
- **Population Estimates:** University of New Mexico, Geospatial and Population Studies (GPS) Program.
- **Age-adjustment:** US 2000 Standard Population Weights for mortality rates. US COVID-19 cases for case fatality rates.

Data Notes

- **The data reported in this weekly update may not match the daily numbers that are reported in the New Mexico Department of Health (NMDOH) press releases and/or the NMDOH COVID-19 data dashboard. This may be due to variation in the date and time of data extraction from NM-EDSS, corrections after quality assurance review, and differences in the exclusion criteria.**
- **New Mexico Electronic Disease Surveillance System (NM-EDSS).** Disease incidence data are derived from reports of notifiable infectious diseases. NMDOH relies on health care providers, laboratories, hospitals, clinics, institutions and individuals to report suspected and confirmed notifiable infectious diseases in accordance with New Mexico Administrative Code 7.4.3.13. Under-reporting can occur due to of lack of awareness about reporting requirements or lack of compliance with those requirements. Not all cases of infectious diseases can be detected for various reasons including lack of access to health care services, lack of laboratory testing or concerns about confidentiality. Specific and standardized national case definitions are used to classify disease reports by case status.
- **New Mexico COVID-19 Related Deaths.** Following the standardized surveillance case definition published by the Council of State and Territorial Epidemiologists, COVID-19 related deaths in NM include 1) deaths of confirmed cases, which have a documented positive RT-PCR test or rapid test for SARS-CoV-2; and 2) deaths based on vital records criteria in the absence of confirmatory laboratory evidence, which is a death certificate that lists COVID-19 disease or SARS-CoV-2 as a cause of death or a significant condition contributing to death. Death certificates may list multiple causes of death, with one single cause identified as the underlying cause of death defined as the condition that began the chain of events that ultimately led to the person's death. Death certificates may also list significant conditions contributing to death, defined as a condition or circumstance that contributed to the cause of death but did not result in the underlying cause nor participated in the causal pathway to the final or immediate cause of death. NM only includes natural deaths and excludes intentional and unintentional injury deaths among confirmed cases. Beginning January 1, 2022 deaths due to natural causes matched to a SARS-CoV-2 positive test result within 30 days of the date of death are included as COVID-19 related deaths even when COVID is not listed on the death certificate.

- **New Mexico Population Estimates.** All population estimates apply to July 1 of 2019. Estimates include decimal fractions. The sum of population subgroup estimates may not exactly equal the overall state population estimate due to rounding error. Population estimates for previous years are occasionally revised as new information becomes available. When publishing trend data, always be sure that your rates for earlier years match current rates on NM-IBIS that have been calculated with the most up-to-date population estimates.
- **Race/ethnicity.** Race and ethnicity are reported as a single variable, race/ethnicity, according to the selection of the case. Any case who is Hispanic is in the Hispanic category and all other races are non-Hispanic.
- **Mortality rate per 100,000 population.** A basic measure of disease-specific hospitalization frequency is a rate, which takes into account the number of deaths and the population size. It is helpful in making public health decisions for a given population, relative to another population regardless of size.
- **Age-adjusted mortality or case fatality rate per 100,000 population.** The age-distribution of a population (the number of people in particular age categories) can change over time and can be different in different geographic areas. The use of age-adjusted rates permits a valid comparison among populations. It ensures that the differences in deaths from one population to another are not due to differences in the age distribution of the populations being compared.
- **Adjustment to the baseline death count.** On 5/24/2021, NMDOH released the results of an audit of COVID-19 related deaths. The net result was the addition of 113 deaths based on death certification which included COVID-19 as cause of death.