

NEW MEXICO COVID-19 CASES UPDATE

STATEWIDE AND COUNTY-LEVEL TRENDS

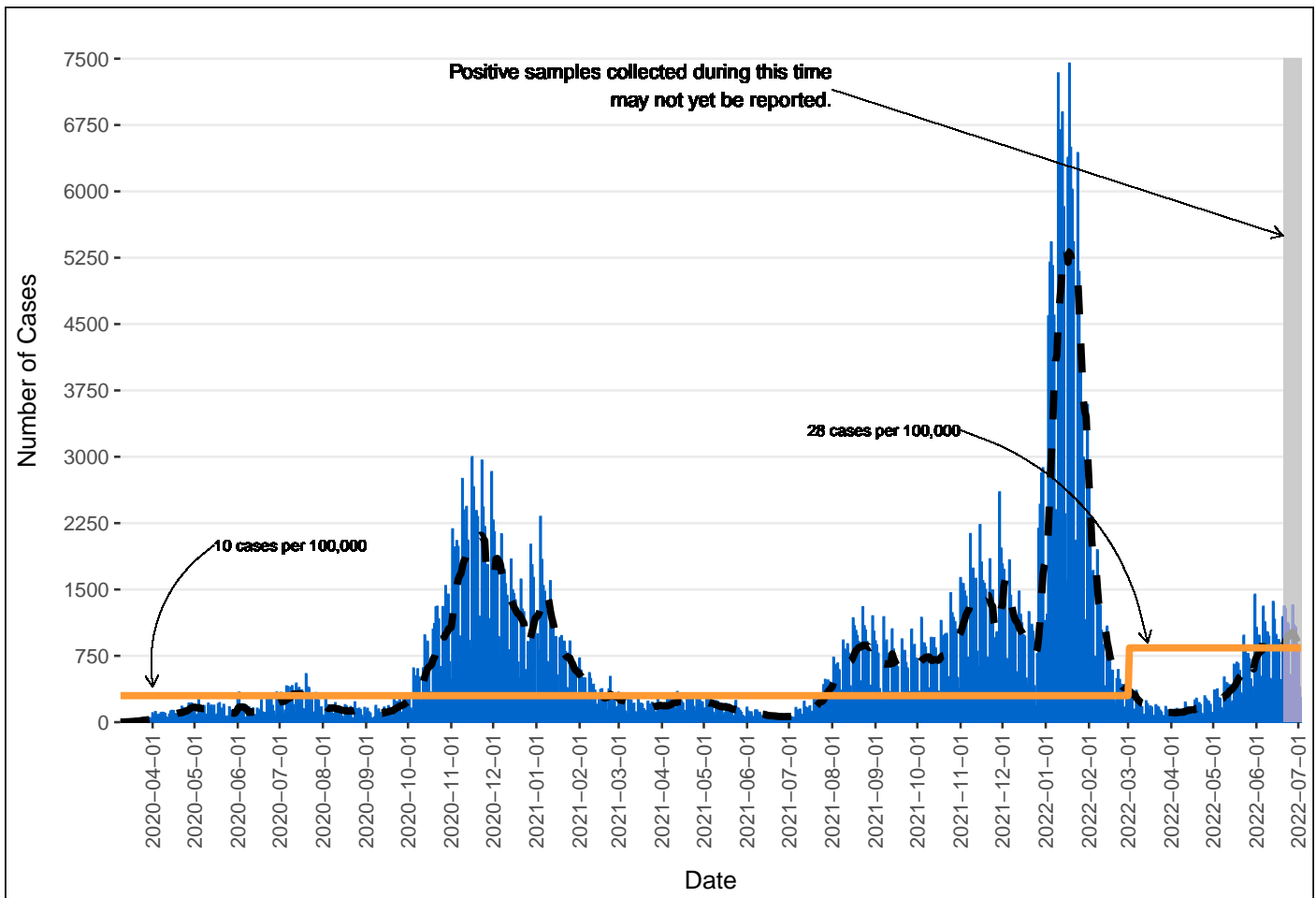
July 04, 2022

Unless stated otherwise, all data reported here exclude cases who are from out-of-state and cases who are detainees in Federal Immigration and Customs Enforcement (ICE) facilities.

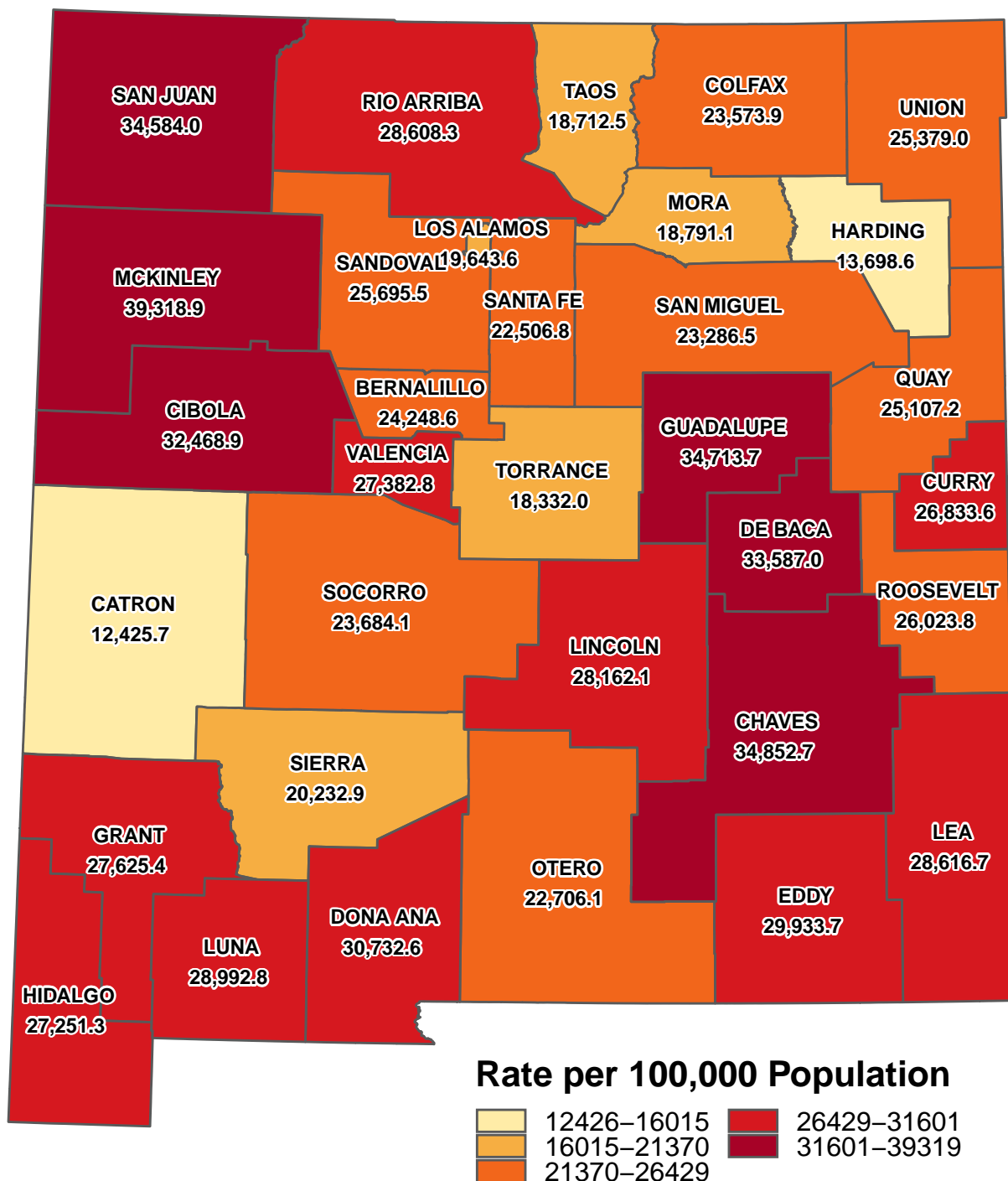
Total Cases	Cases in the Last 7 Days
564,684 ¹	6344

SECTION 1: STATEWIDE AND COUNTY-LEVEL CASES

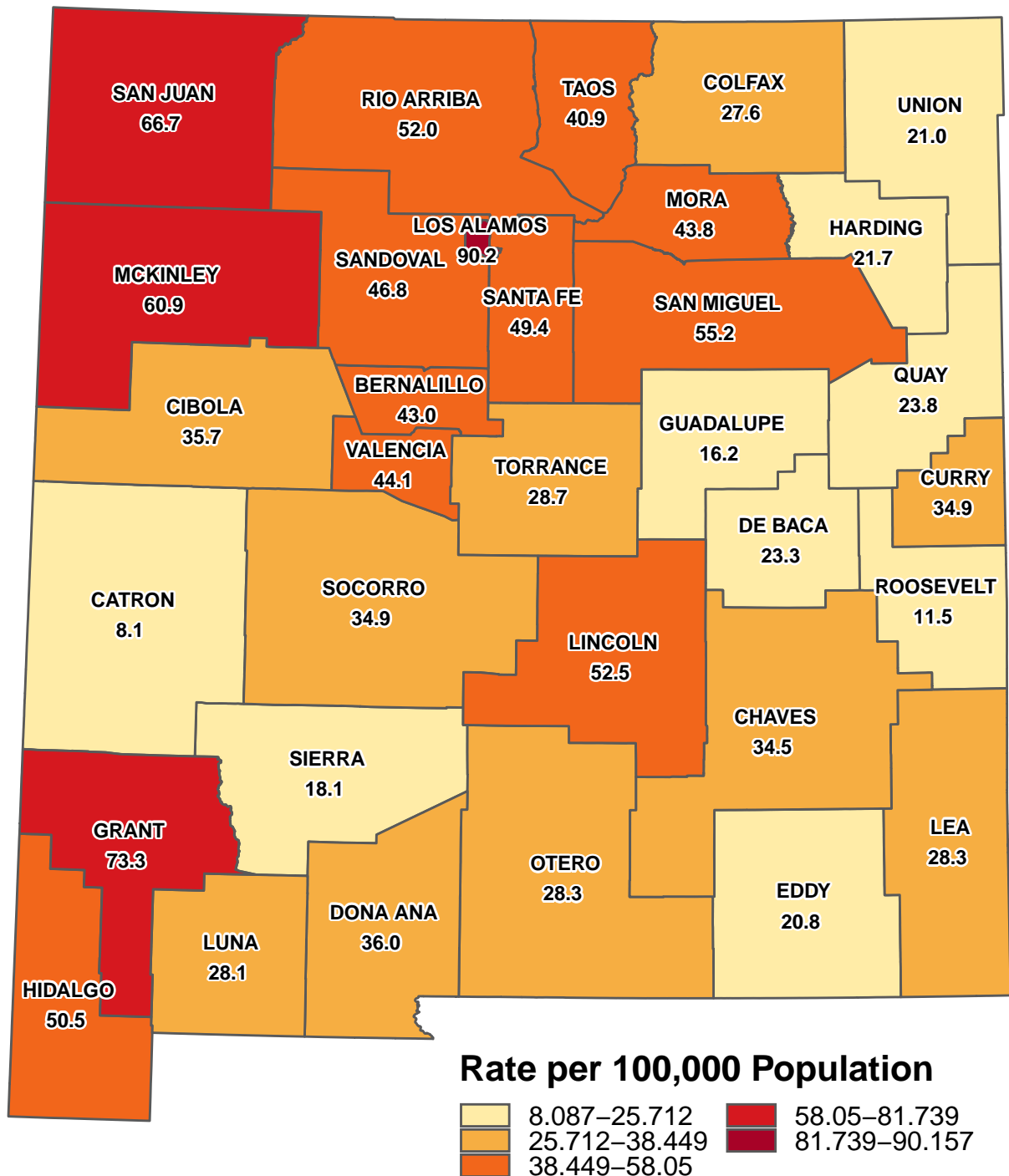
New Mexico cases by date of specimen collection with 7 day moving average



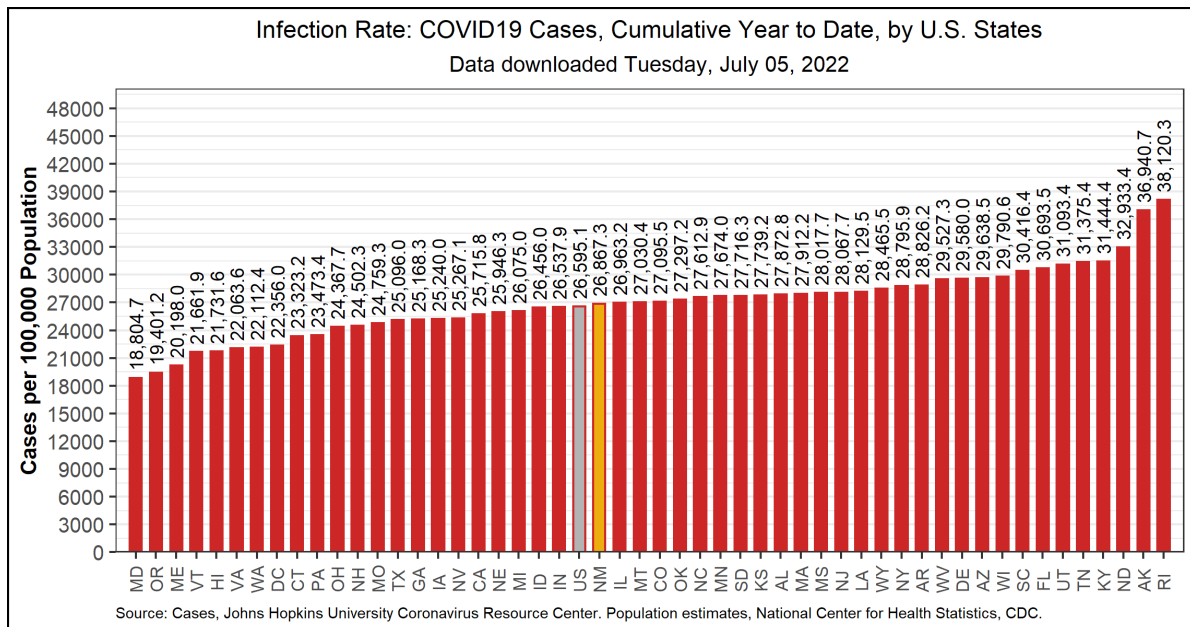
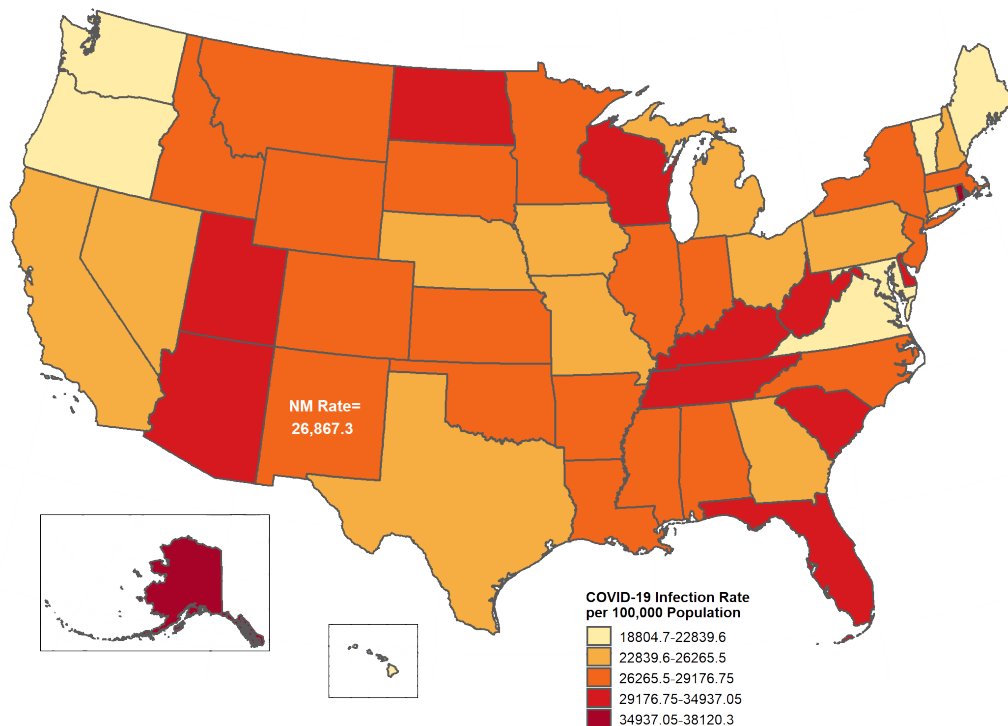
Cumulative case rate per 100,000 population by New Mexico County



Average daily case rate per 100,000 population in the previous 7 days by New Mexico County
(06/27/2022 - 07/03/2022)



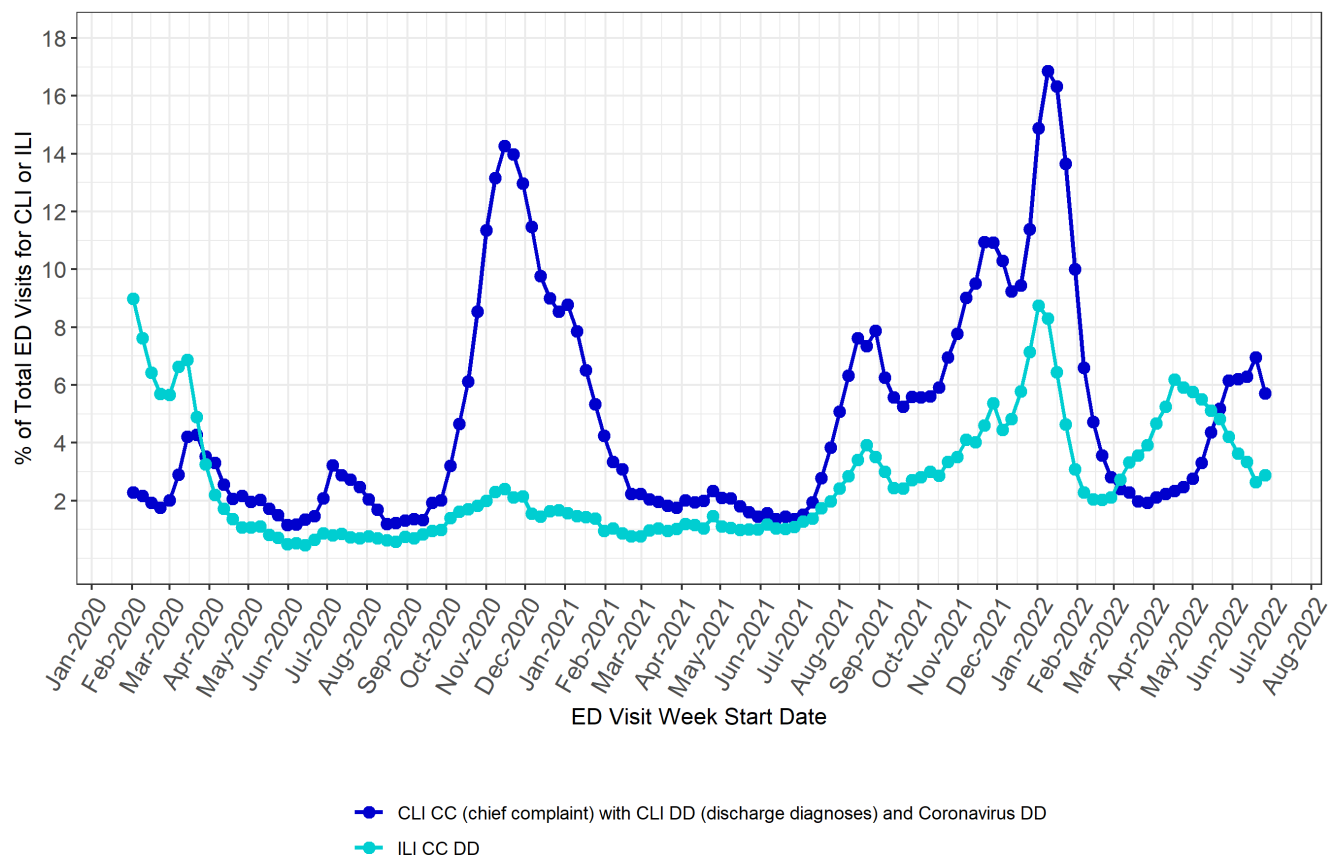
Cumulative infection rate per 100,000 population by U.S. States



Note: Data updated 07/05/2022 and downloaded from <https://coronavirus.jhu.edu/>. For U.S. interstate comparisons, the methodology used here is slightly different than methodologies used in other NMDOH COVID-19 reports.

Percentage of all emergency department (ED) visits that were Coronavirus-like illness (CLI) and Influenza-like illness (ILI) related

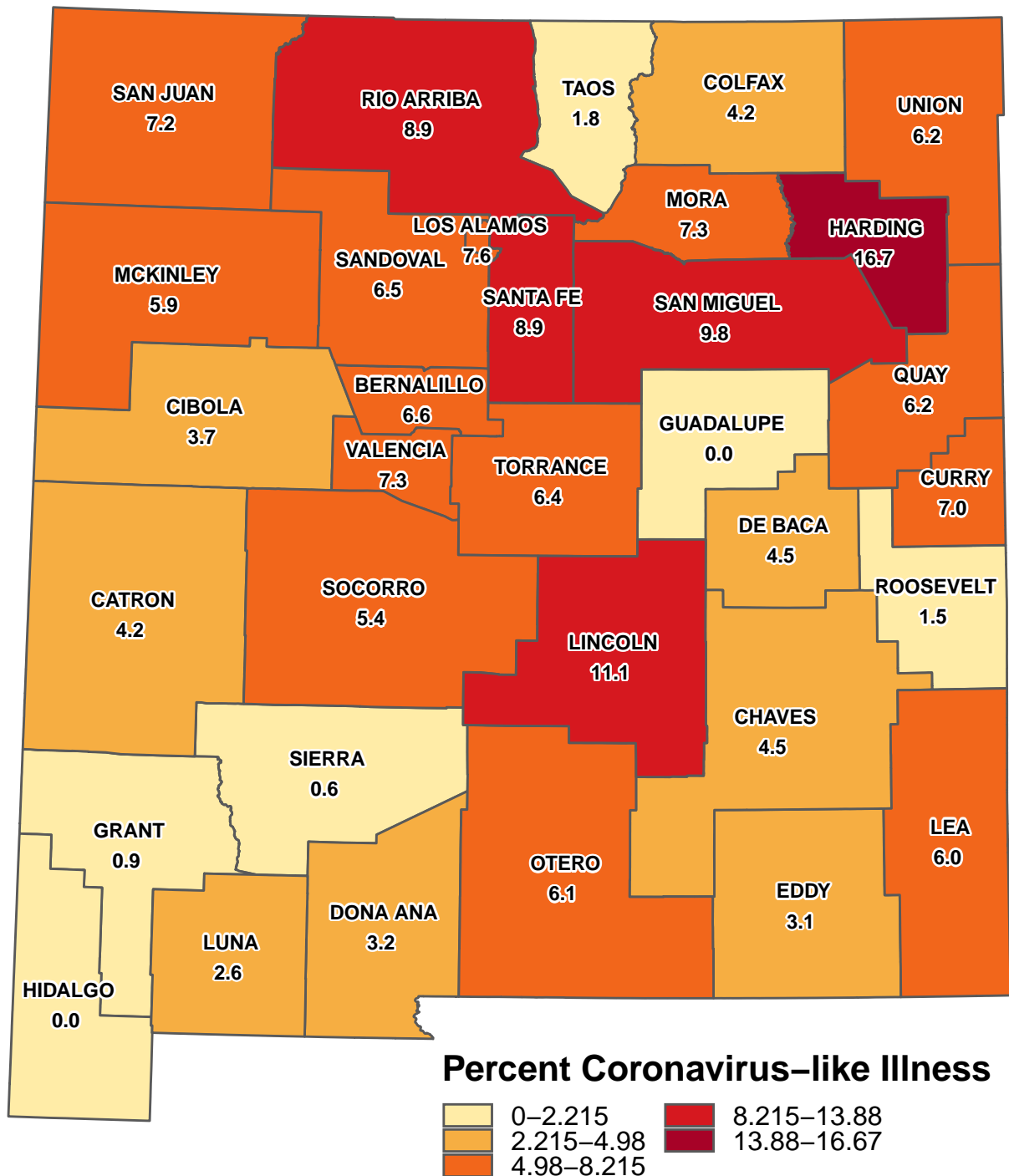
These visualizations are populated from data in New Mexico's Syndromic Surveillance Database. Initial patient encounter information is usually received within 24 hours, but clinical documentation is continuously being updated as it is identified throughout the patient encounter and hospital coding process.



CLI CC with CLI DD and Coronavirus DD includes ED encounters with chief complaint consisting of fever and cough, shortness of breath, or difficulty breathing, while also including COVID-19 associated discharge diagnoses codes. The CLI definition excludes known influenza related ED visits coded with related influenza discharge diagnosis.

ILI CCDD includes ED encounters with chief complaint consisting of fever and cough, while also including ILI and influenza related discharge diagnoses.

Percentage of all emergency department (ED) visits that were for Coronavirus-like illness (CLI) by New Mexico County (06/21/2022 - 07/05/2022)

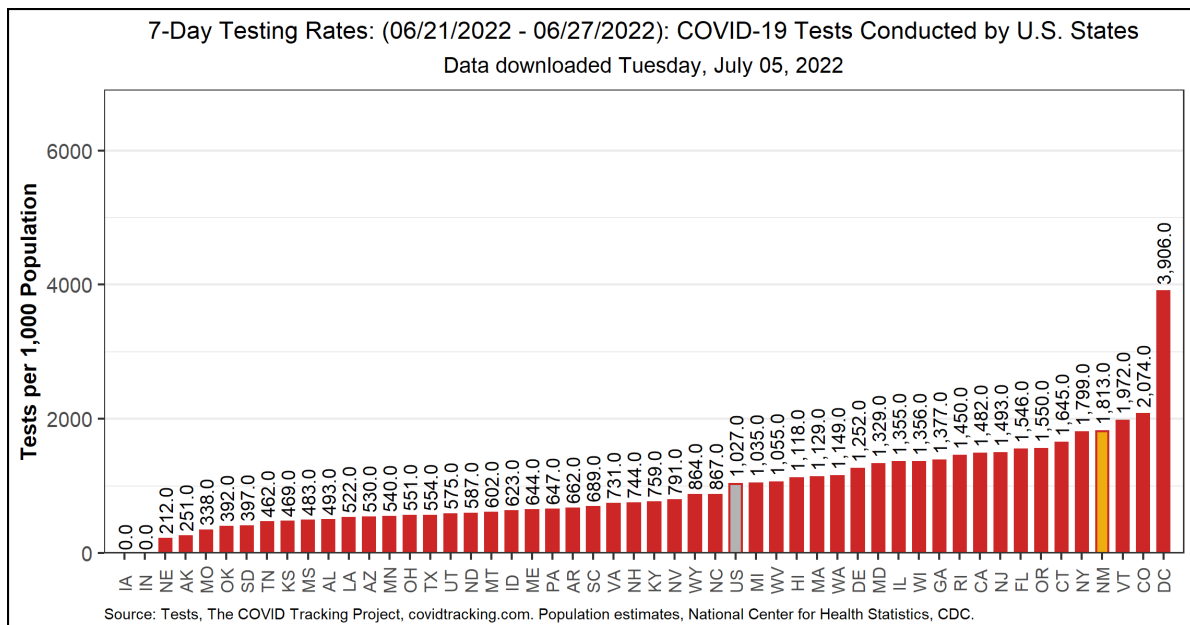
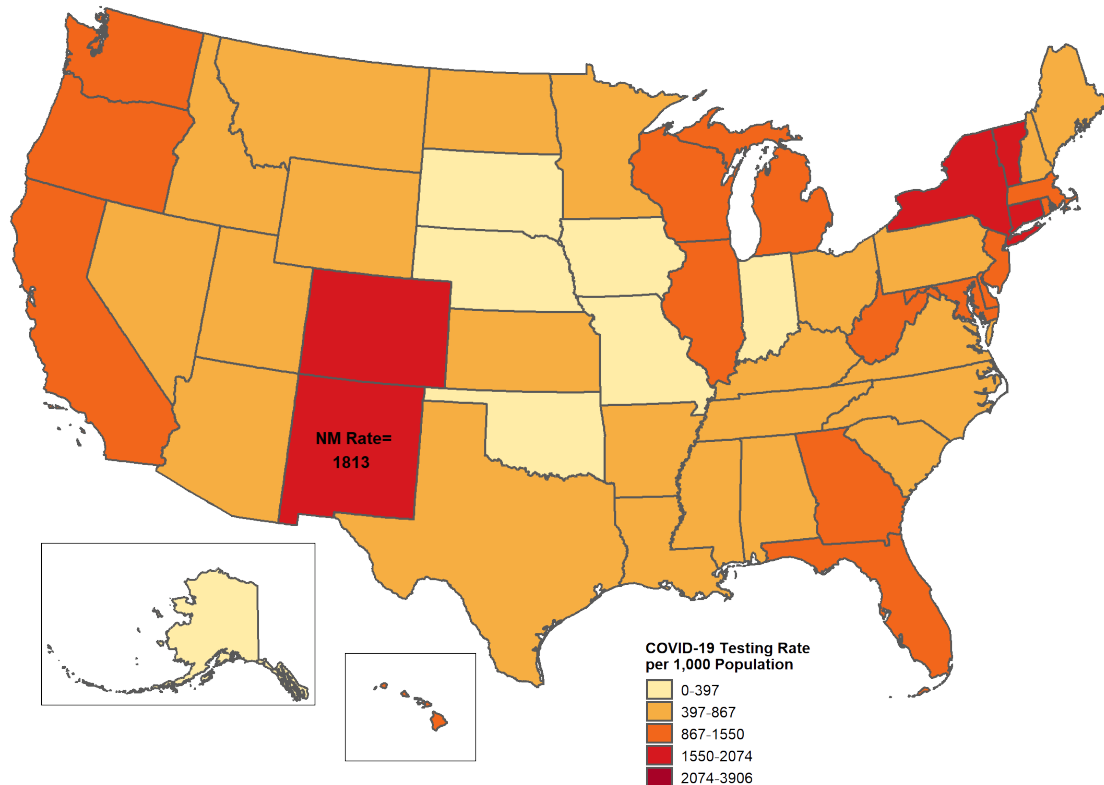


Cumulative number of cases and recovered cases by county

County	Cumulative Cases	Cumulative Recovered
Bernalillo	163966	153108
Catron	437	407
Chaves	21779	21187
Cibola	7841	7316
Colfax	2509	2388
Curry	13340	12809
De Baca	617	604
Dona Ana	66644	64032
Eddy	17398	16876
Grant	7661	6979
Guadalupe	1160	1116
Harding	90	85
Hidalgo	1153	1106
Lea	19532	18993
Lincoln	5566	5301
Los Alamos	3645	3149
Luna	7069	6699
McKinley	27551	25930
Mora	851	785
Otero	14076	13443
Quay	2100	1999
Rio Arriba	11042	10336
Roosevelt	5174	4996
San Juan	43412	40803
San Miguel	6477	6035
Sandoval	37431	35164
Santa Fe	33165	30644
Sierra	2233	2022
Socorro	4054	3843
Taos	6049	5524
Torrance	2871	2710
Union	815	785
Valencia	20071	18948

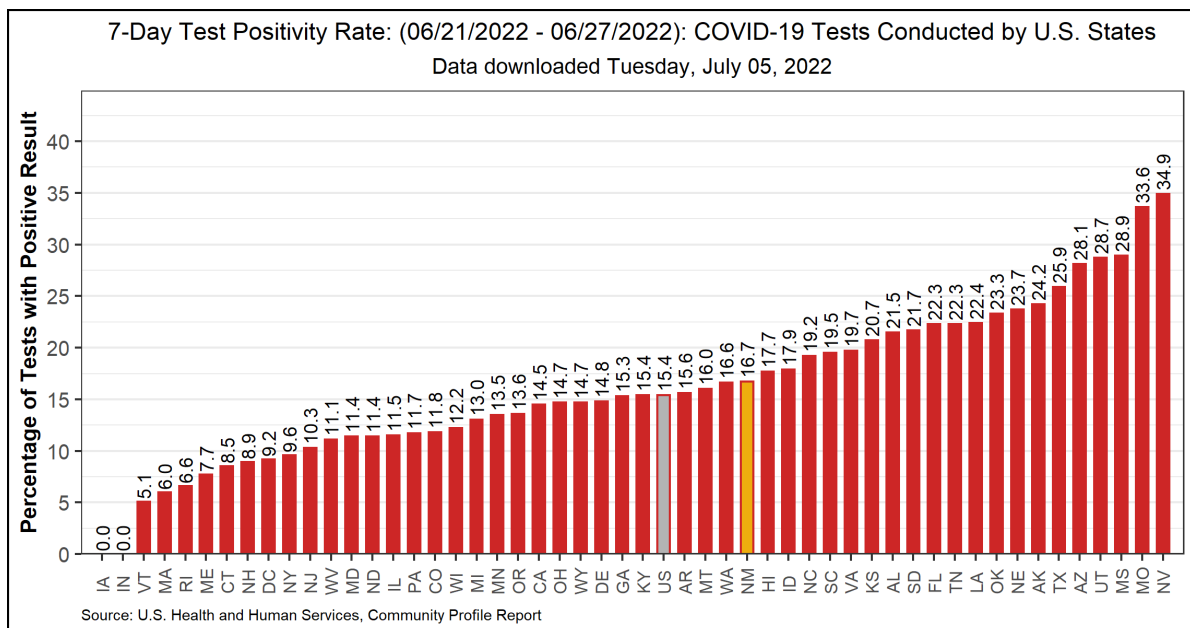
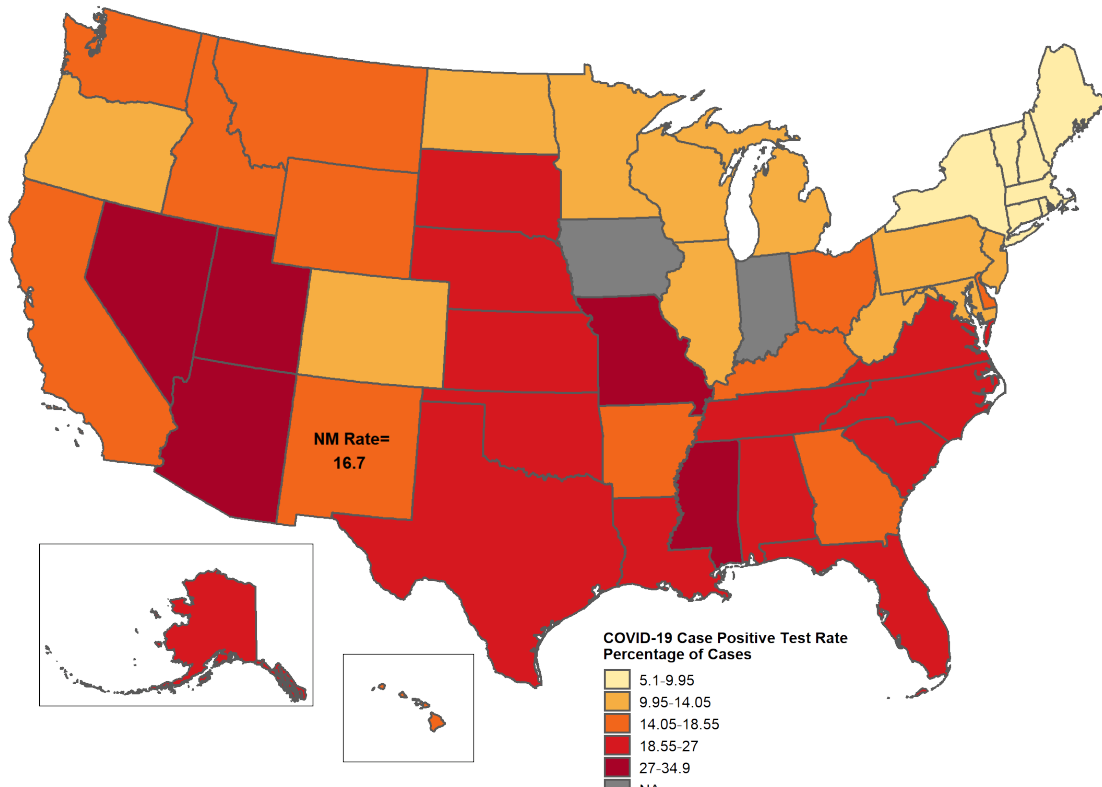
SECTION 2: TESTING

Testing rate by U.S. States



Note: Data downloaded 07/05/2022 and downloaded from <https://beta.healthdata.gov/National/COVID-19-Community-Profile-Report/gqxm-d9w9>. For U.S. interstate comparisons, the methodology used here is slightly different than methodologies used in other NMDOH COVID-19 reports.

Test positivity by U.S. States



Note: Data downloaded 07/05/2022 and downloaded from <https://beta.healthdata.gov/National/COVID-19-Community-Profile-Report/gqxm-d9w9>. For U.S. interstate comparisons, the methodology used here is slightly different than methodologies used in other NMDOH COVID-19 reports. States colored gray in the map are missing data this week.

Data Sources

- **COVID-19 data:**
- **New Mexico Electronic Disease Surveillance System (NM-EDSS)**, Infectious Disease Epidemiology Bureau, Epidemiology and Response Division, New Mexico Department of Health.
- **Salesforce/MTX COVID-19 Case Investigation Platform.**
- **Population Estimates:** University of New Mexico, Geospatial and Population Studies (GPS) Program.
- **Age-adjustment:** US 2000 Standard Population Weights

Data Notes

- **The data reported in this weekly update may not match the daily numbers that are reported in the New Mexico Department of Health (NMDOH) press releases and/or the NMDOH COVID-19 data dashboard. This may be due to variation in the date and time of data extraction from NM-EDSS, corrections after quality assurance review, and differences in the exclusion criteria.**
- **New Mexico Electronic Disease Surveillance System (NM-EDSS).** Disease incidence data are derived from reports of notifiable infectious diseases. NMDOH relies on health care providers, laboratories, hospitals, clinics, institutions and individuals to report suspected and confirmed notifiable infectious diseases in accordance with New Mexico Administrative Code 7.4.3.13. Under-reporting can occur due to lack of awareness about reporting requirements or lack of compliance with those requirements. Not all cases of infectious diseases can be detected for various reasons including lack of access to health care services, lack of laboratory testing or concerns about confidentiality. Specific and standardized national case definitions are used to classify disease reports by case status.
- **New Mexico Population Estimates.** All population estimates apply to July 1 of 2019. Estimates include decimal fractions. The sum of population subgroup estimates may not exactly equal the overall state population estimate due to rounding error. Population estimates for previous years are occasionally revised as new information becomes available. When publishing trend data, always be sure that your rates for earlier years match current rates on NM-IBIS that have been calculated with the most up-to-date population estimates.
- **Race/Ethnicity.** Race/Ethnicity are reported as a single variable according to the selection of the case. Any case who is Hispanic is in the Hispanic category and all other races are non-Hispanic.
- **Gender** refers to a person's internal sense of being male, female, some combination of male and female, or neither male nor female. Sex refers to the biological anatomy of an individual's reproductive system, and secondary sex characteristics.
- **Case rate per 100,000 population.** A basic measure of disease-specific case frequency is a rate, which takes into account the number of cases and the population size. It is helpful in making public health decisions for a given population, relative to another population regardless of size.
- **Age-adjusted case rate per 100,000 population.** The age-distribution of a population (the number of people in particular age categories) can change over time and can be different in different geographic areas. The use of age-adjusted rates permits a valid comparison among populations. It ensures that the differences in cases from one population to another are not due to differences in the age distribution of the populations being compared.