

NEW MEXICO COVID-19 MORTALITY UPDATE

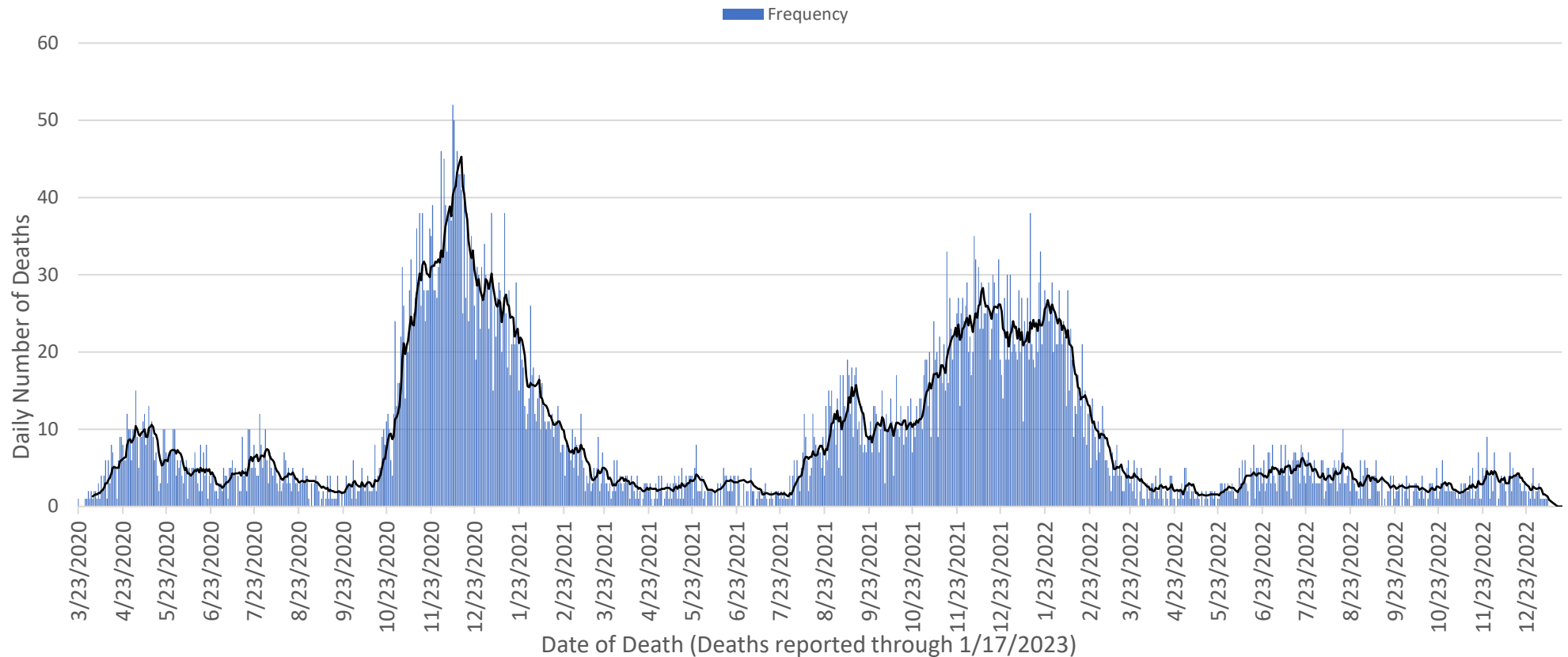
January 16th, 2023

All data reported here exclude cases who live out-of-state.

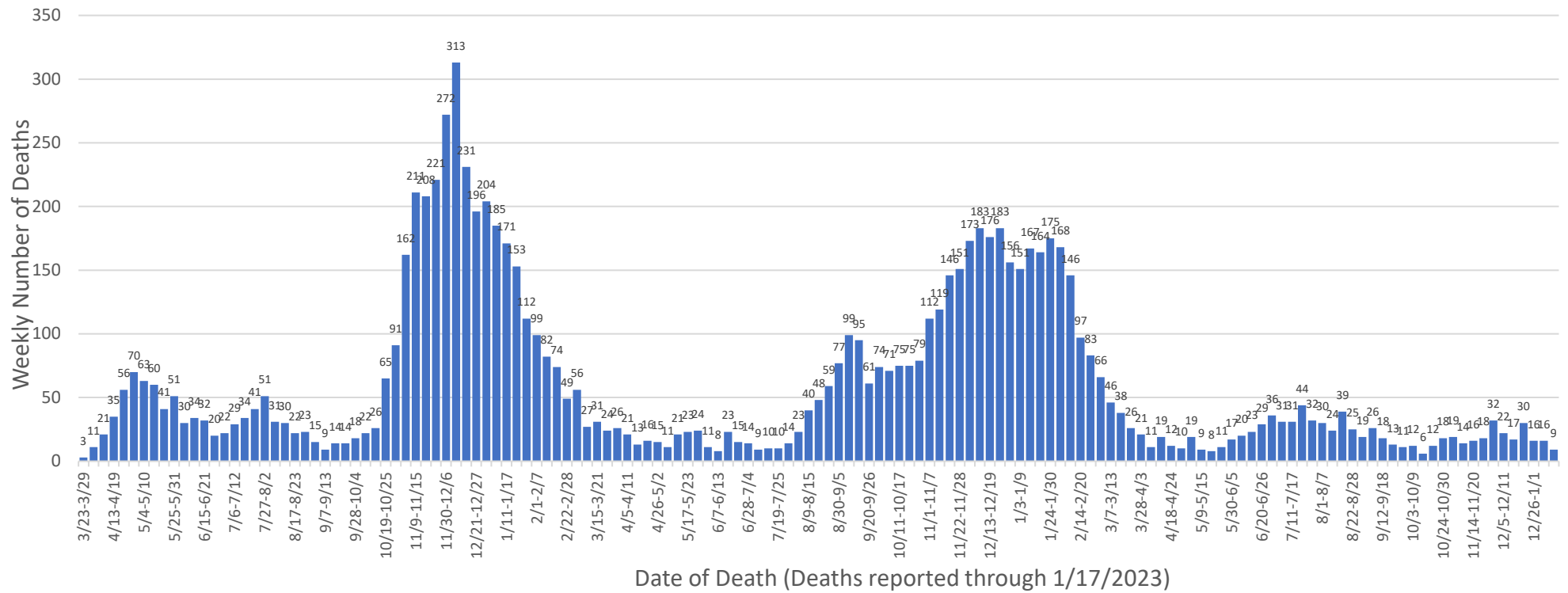
Total Deaths	Deaths in the Last 14 Days
8,896	25

SECTION 1: DEATH COUNTS

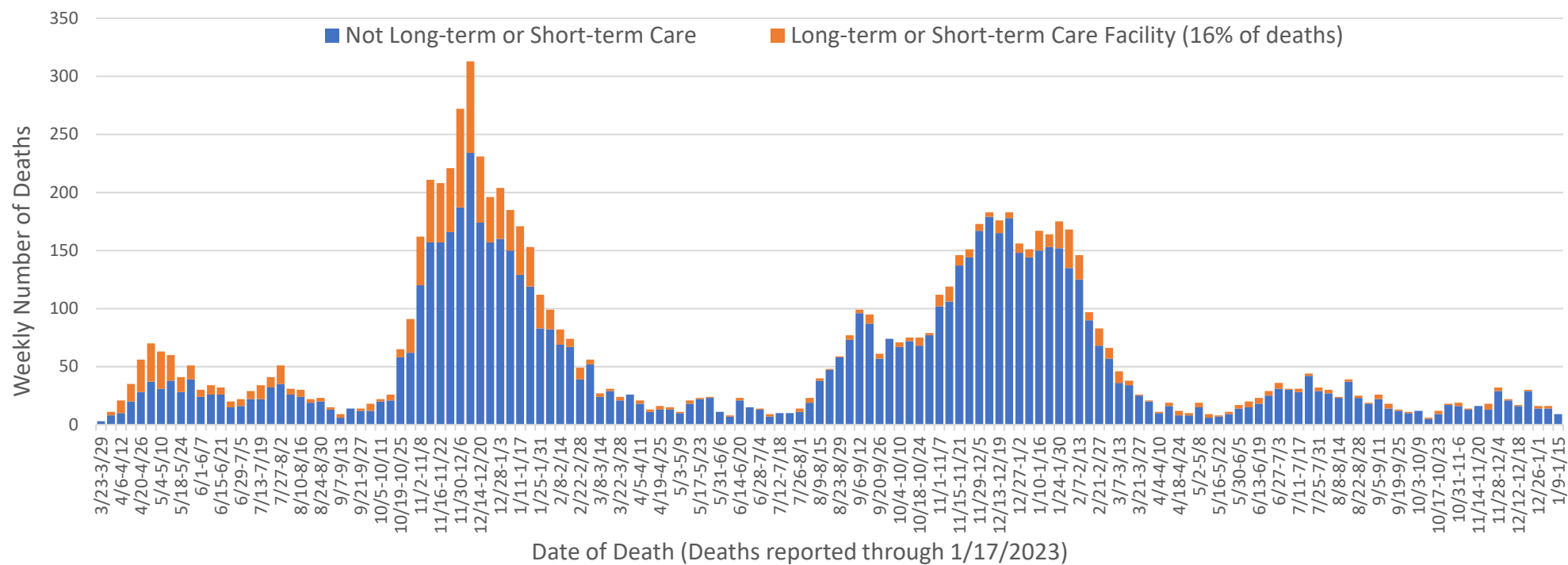
Daily Number of Deaths and 7-day Moving Average



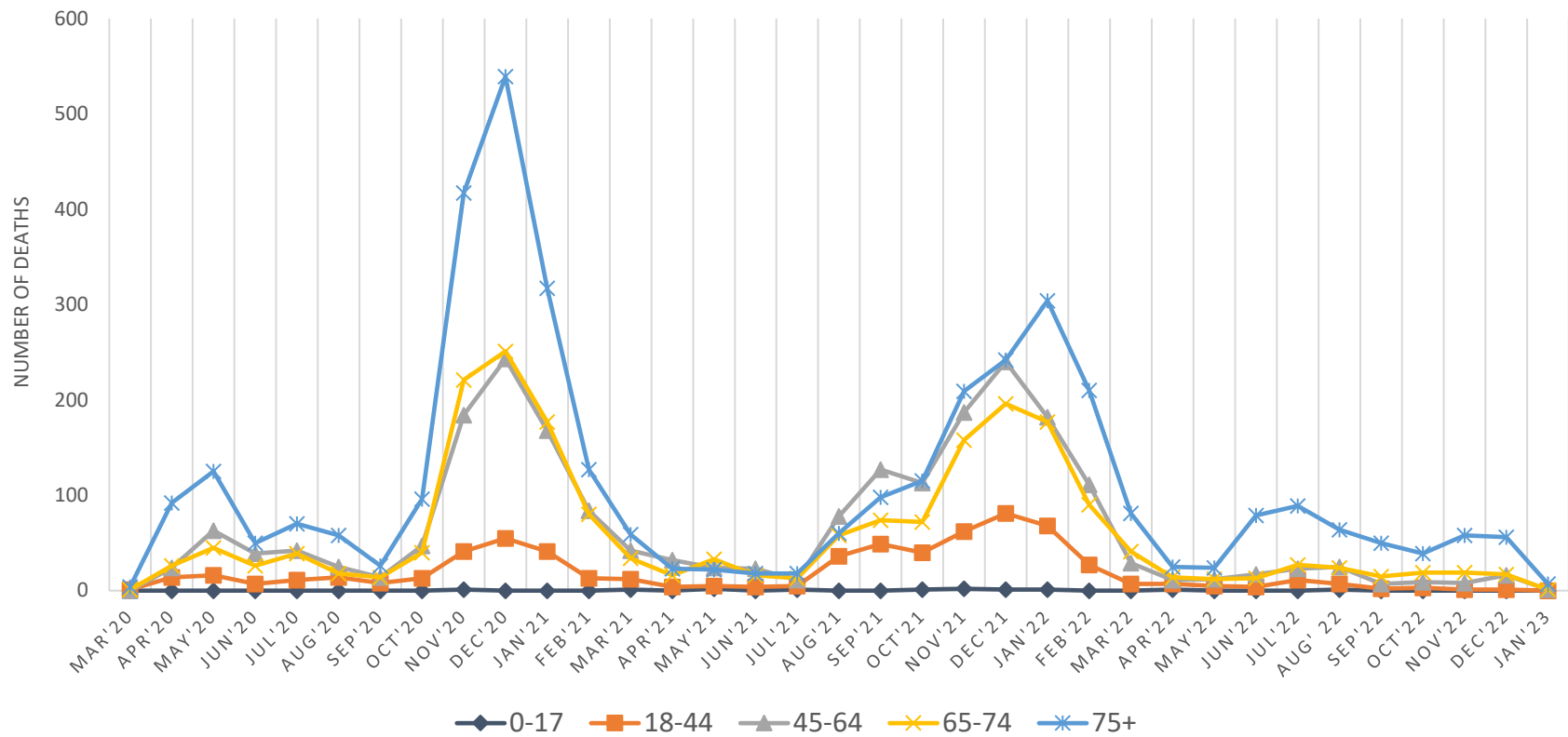
Number of Deaths Each Week



Number of Deaths Each Week by Long- and Short-term Care Facility Residence



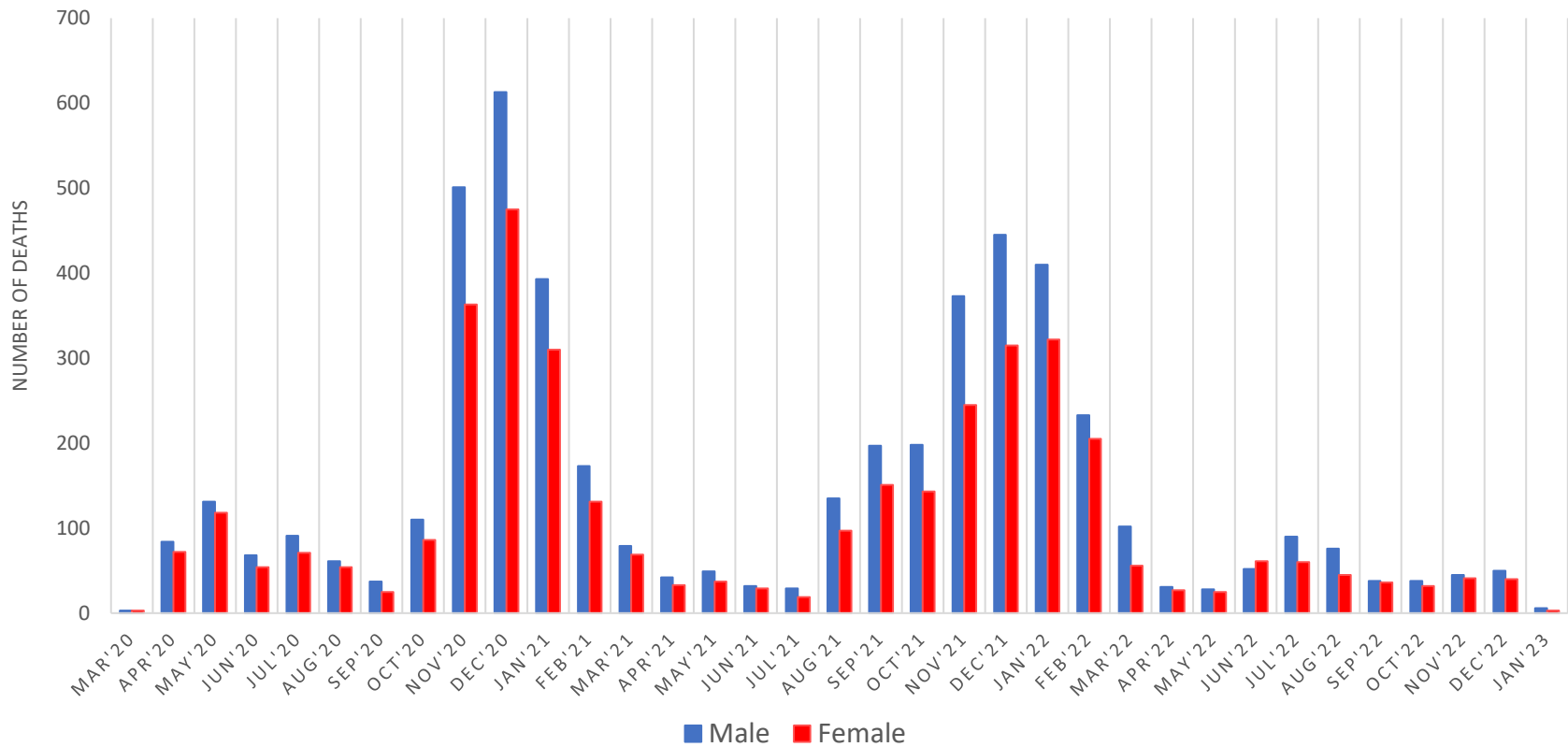
Number of Deaths by Age Group Each Month



Age Group (years)	Subtotal ¹	Jan'22	Feb'22	Mar'22	Apr'22	May'22	Jun'22	Jul'22	Aug' 22	Sep'22	Oct'22	Nov'22	Dec'22	Jan'23	Total
0-17	9	1	0	0	1	0	0	0	1	0	0	0	0	0	12
18-44	532	68	27	7	7	5	4	11	7	2	3	1	1	0	675
45-64	1810	182	111	29	11	12	17	23	25	7	9	8	16	1	2261
65-74	1608	177	90	41	14	12	13	27	24	15	19	19	17	1	2077
75+	2785	304	210	81	25	24	79	89	64	50	39	58	56	7	3871
Total	6744	732	438	158	58	53	113	150	121	74	70	86	90	9	8896

¹ – The subtotal column includes deaths from March 2020 through December 2021.

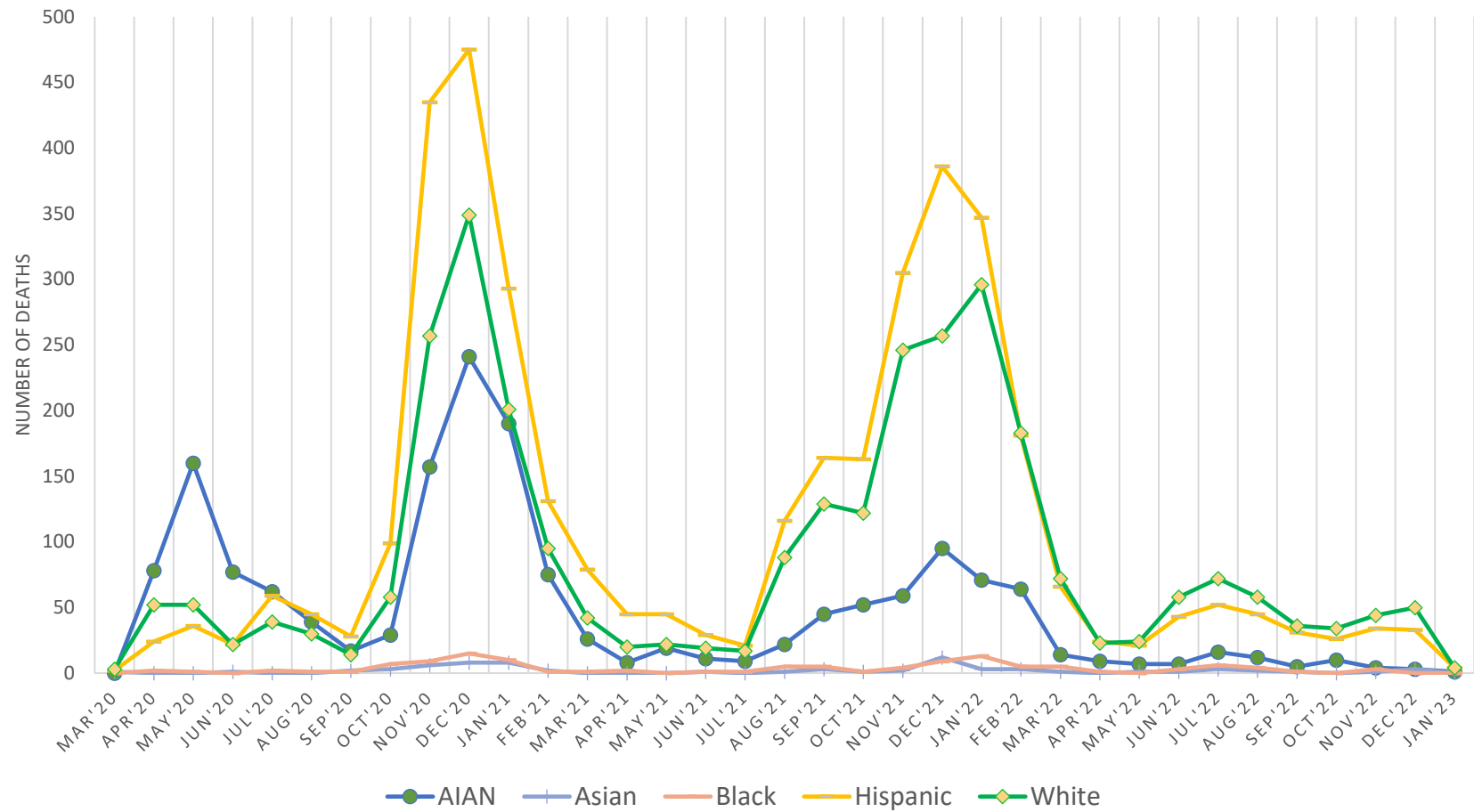
Number of Deaths by Gender Each Month



Gender	Subtotal ¹	Jan'22	Feb'22	Mar'22	Apr'22	May'22	Jun'22	Jul'22	Aug' 22	Sep'22	Oct'22	Nov'22	Dec'22	Jan'23	Total
Female	2900	322	205	56	27	25	61	60	45	36	32	41	40	3	3853
Male	3844	410	233	102	31	28	52	90	76	38	38	45	50	6	5043
Total	6744	732	438	158	58	53	113	150	121	74	70	86	90	9	8896

¹ – The subtotal column includes deaths from March 2020 through December 2021.

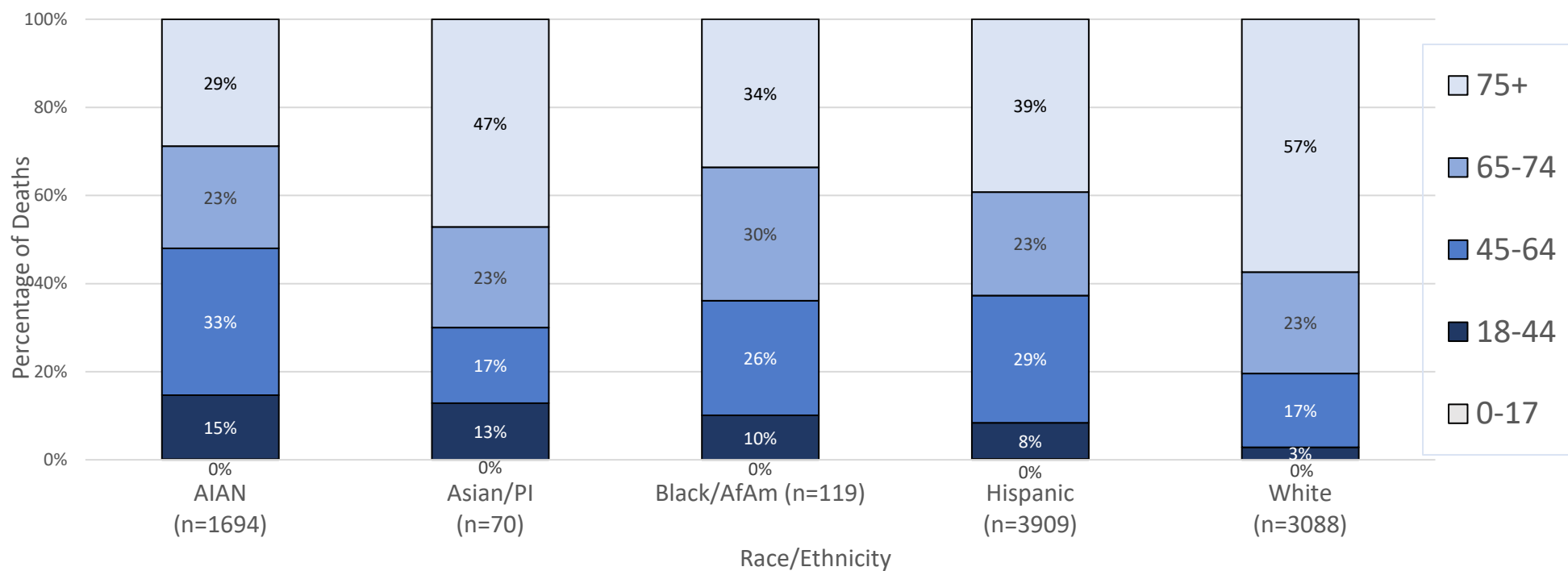
Number of Deaths by Race/Ethnicity Each Month



Race/Ethnicity	Subtotal ¹	Jan'22	Feb'22	Mar'22	Apr'22	May'22	Jun'22	Jul'22	Aug' 22	Sep'22	Oct'22	Nov'22	Dec'22	Jan'23	Total
AIAN	1471	71	64	14	9	7	7	16	12	5	10	4	3	1	1694
Asian	51	3	3	1	0	1	1	3	2	1	0	1	3	0	70
Black	78	13	5	5	1	0	3	6	4	1	0	3	0	0	119
Hispanic	3002	347	181	66	24	21	43	52	45	31	26	34	33	4	3909
White	2134	296	183	72	23	24	58	72	58	36	34	44	50	4	3088

¹ – The subtotal column includes deaths from March 2020 through December 2021.

Percentage of Deaths by Race/Ethnicity and Age Group

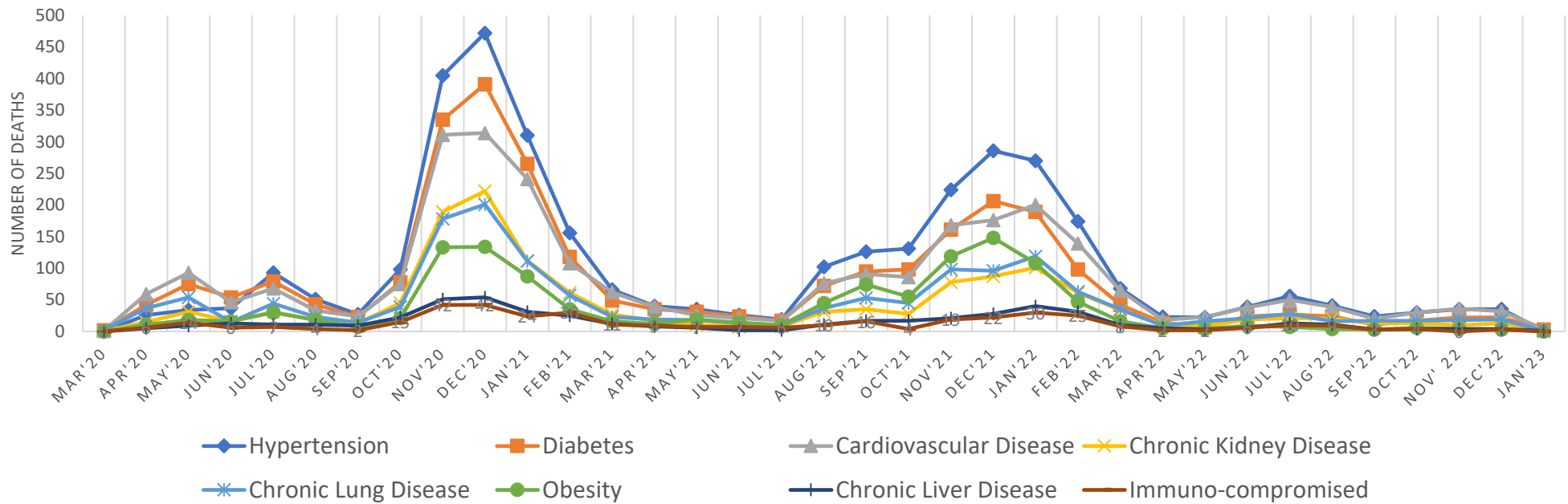


Number of deaths by New Mexico County of residence each month

County of Residence	Subtotal ¹	Jan'22	Feb'22	Mar'22	Apr'22	May'22	Jun'22	Jul'22	Aug' 22	Sep'22	Oct'22	Nov'22	Dec'22	Jan'23	Total
Bernalillo	1572	193	116	47	15	14	49	51	38	19	26	36	21	1	2198
Dona Ana	708	85	46	15	5	7	5	18	9	10	4	1	9	1	923
San Juan	720	32	33	10	9	2	3	10	11	4	5	9	7	0	855
McKinley	560	25	22	6	1	1	2	8	6	5	3	2	2	0	643
Sandoval	365	48	27	9	4	4	6	6	7	6	4	3	9	1	499
Lea	321	39	18	7	4	0	1	4	6	5	0	0	2	0	407
Santa Fe	237	44	12	10	3	7	17	9	14	4	8	10	7	1	383
Chaves	268	44	23	10	0	2	1	2	5	1	0	1	0	3	360
Eddy	259	23	18	8	2	1	1	3	1	6	0	0	2	0	324
Valencia	226	27	17	9	3	2	2	7	6	2	6	7	5	1	320
Curry	168	29	22	0	4	3	2	2	1	1	0	1	0	0	233
Otero	167	13	17	2	1	1	4	4	4	3	3	1	5	0	225
Cibola	178	11	6	4	0	1	2	2	0	0	2	3	0	0	209
Rio Arriba	120	11	9	4	1	1	1	5	5	1	1	2	3	0	164
Luna	121	6	7	4	2	0	2	2	3	1	0	0	2	0	150
Grant	83	9	5	2	1	1	4	2	0	0	0	2	3	1	113
Roosevelt	94	9	3	1	1	0	0	0	1	1	0	0	1	0	111
Taos	76	9	7	0	0	1	3	1	0	2	3	3	0	0	105
Socorro	78	10	3	0	0	0	3	2	1	0	0	2	1	0	100
Sierra	73	5	2	0	0	1	2	1	0	1	1	0	0	0	86
San Miguel	48	12	5	2	2	2	0	4	1	0	1	0	5	0	82
Lincoln	52	12	6	0	0	0	0	1	0	0	0	1	2	0	74
Colfax	61	3	2	1	0	0	0	1	0	0	2	0	0	0	70
Quay	51	9	4	1	0	0	1	2	0	1	0	0	1	0	70
Torrance	51	4	3	1	0	0	0	1	0	0	0	0	1	0	61
Catron	13	5	2	1	0	1	0	0	0	0	0	1	0	0	23
Los Alamos	11	2	2	1	0	0	2	2	2	0	0	0	1	0	23
Mora	15	3	0	1	0	1	0	0	0	0	0	1	1	0	22
Union	14	3	0	1	0	0	0	0	0	0	1	0	0	0	19
Guadalupe	15	1	1	0	0	0	0	0	0	1	0	0	0	0	18
Hidalgo	12	3	0	1	0	0	0	0	0	0	0	0	0	0	16
De Baca	3	3	0	0	0	0	0	0	0	0	0	0	0	0	6
Harding	4	0	0	0	0	0	0	0	0	0	0	0	0	0	4
Total	6744	732	438	158	58	53	113	150	121	74	70	86	90	9	8896

¹ – The subtotal column includes deaths from March 2020 through December 2021.

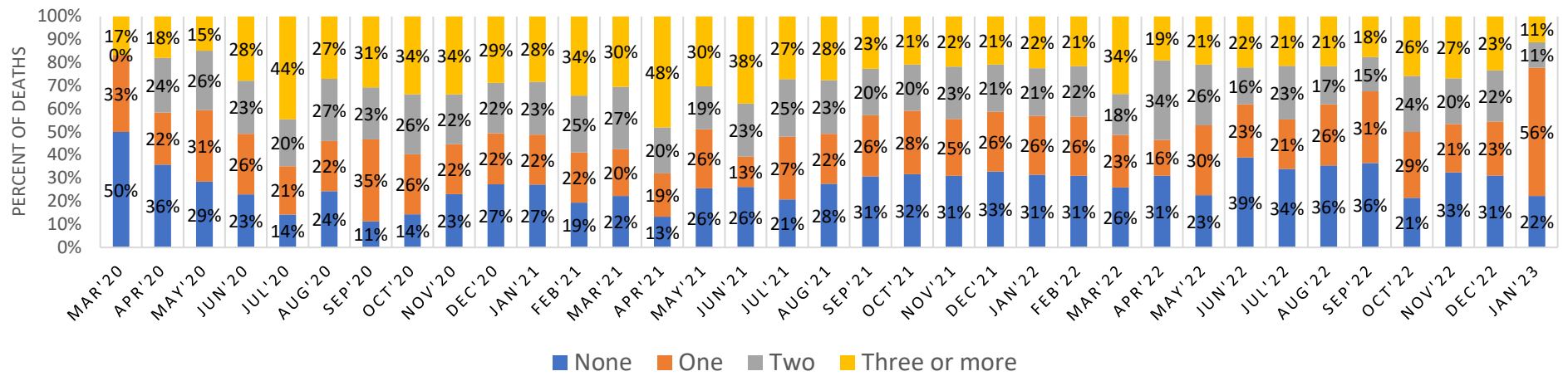
Number of Deaths by Underlying Conditions Each Month



Underlying Conditions	Subtotal ¹	Jan'22	Feb'22	Mar'22	Apr'22	May'22	Jun'22	Jul'22	Aug' 22	Sep'22	Oct'22	Nov'22	Dec'22	Jan'23	Total
Hypertension	2764	270	174	68	23	22	39	56	41	24	30	35	35	1	3582
Diabetes	2293	189	98	42	14	7	24	27	24	11	17	22	22	3	2793
Cardiovascular Disease	2135	200	139	65	18	23	38	50	39	20	30	36	32	4	2829
Chronic Kidney Disease	1083	101	61	34	11	8	19	21	20	13	13	10	13	0	1407
Chronic Lung Disease	1186	119	63	35	9	16	21	28	16	17	17	18	19	1	1565
Obesity	1022	108	47	16	5	4	9	7	4	3	6	4	3	0	1238
Chronic Liver Disease	365	40	31	10	5	3	6	13	11	3	4	4	4	1	500
Immuno-compromised	303	30	25	8	2	2	6	10	9	3	4	0	3	0	405

1 – The subtotal column includes deaths from March 2020 through December 2021.

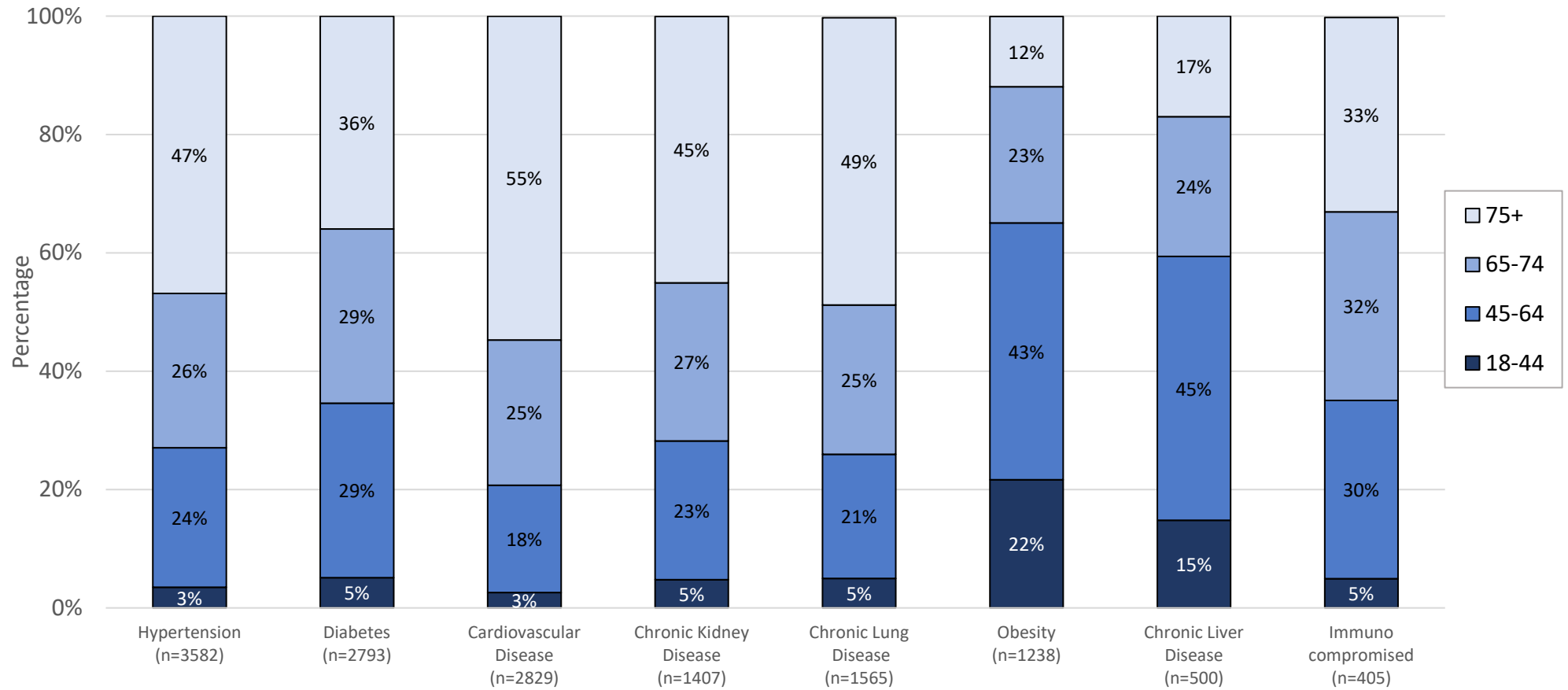
Percentage and Number of Deaths Each Month by Number of Underlying Conditions Reported



Number of Underlying Conditions	Subtotal ¹	Jan'22	Feb'22	Mar'22	Apr'22	May'22	Jun'22	Jul'22	Aug' 22	Sep'22	Oct'22	Nov'22	Dec'22	Jan'23	Total
None	1802	230	136	41	18	12	44	51	43	27	15	28	28	2	2477
One	1595	187	112	36	9	16	26	32	32	23	20	18	21	5	2132
Two	1503	151	96	28	20	14	18	35	20	11	17	17	20	1	1951
Three or more	1844	164	94	53	11	11	25	32	26	13	18	23	21	1	2336
Total	6744	732	438	158	58	53	113	150	121	74	70	86	90	9	8896

¹ – The subtotal column includes deaths from March 2020 through December 2021.

Percentage of Deaths by Underlying Condition and Age Group



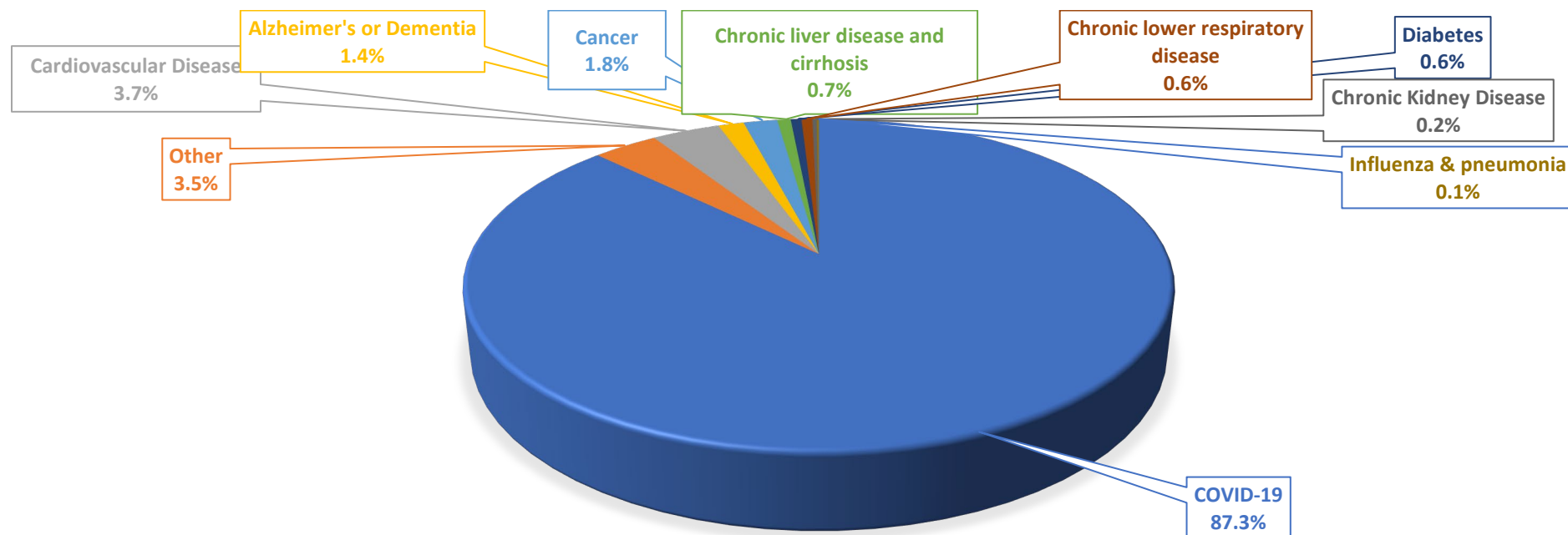
Number and percent of deaths by Test Result and Cause of Death on the Death Certificate

Positive COVID-19 Test Result ¹	COVID-19 Cause/Contributor of Death on Death Certificate	Number of Deaths	Percent
Yes	Yes	7874	88.5%
Yes	No	339 ²	3.8%
No	Yes	683	7.7%
Total		8896	100.0%

1 Positive RT-PCR or Rapid Test

2 Beginning January 1, 2022, deaths due to natural causes matched to a SARS-CoV-2 positive test result within 30 days of the date of death are included as COVID-19 related deaths even when COVID is not listed on the death certificate.

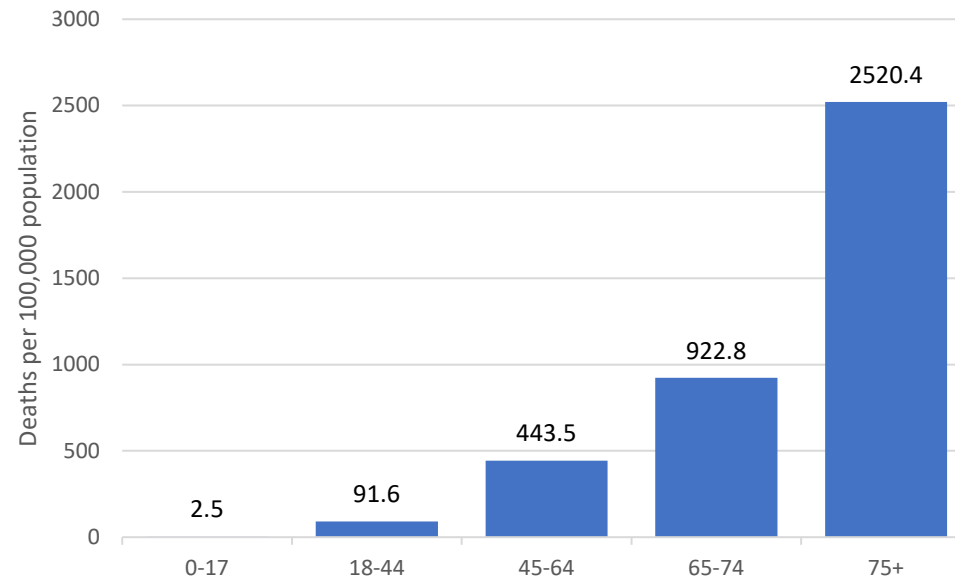
Number and percent of deaths by underlying cause of death on the death certificate



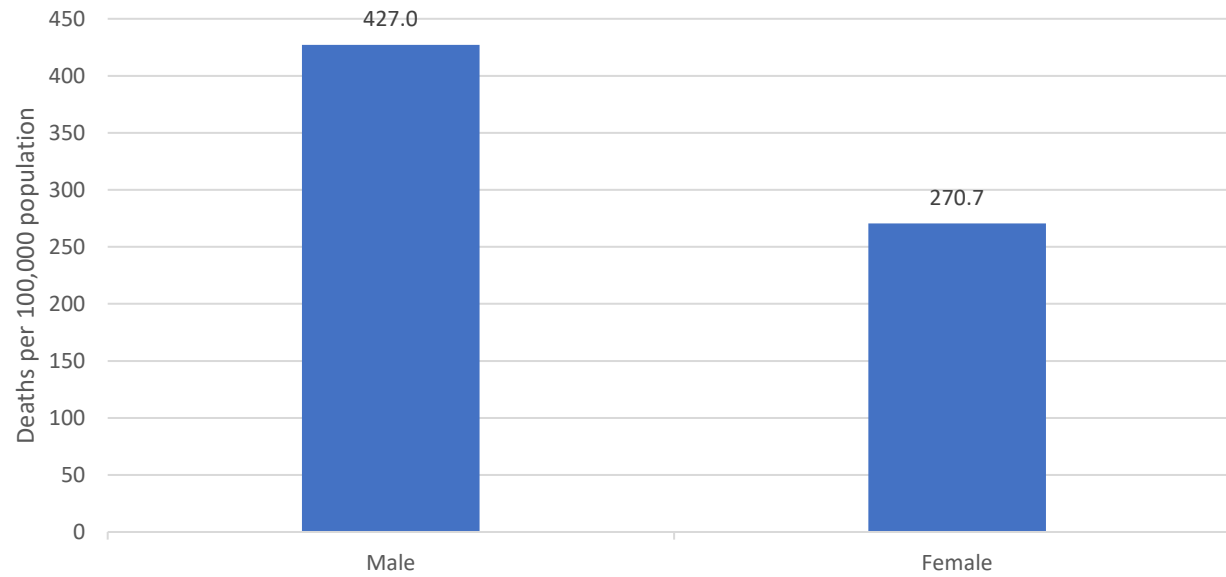
Underlying Cause	Number of Deaths*	Percent
COVID-19	7473	87.3%
Other	303	3.5%
Cardiovascular Disease	318	3.7%
Alzheimer's or Dementia	119	1.4%
Cancer	158	1.8%
Chronic liver disease and cirrhosis	63	0.7%
Diabetes	50	0.6%
Chronic lower respiratory disease	51	0.6%
Chronic Kidney Disease	21	0.2%
Influenza & pneumonia	9	0.1%
Total	8565	100.0%
*Excludes 331 (4%) deaths which have not yet been coded by the National Center for Health Statistics.		

SECTION 2: MORTALITY RATES

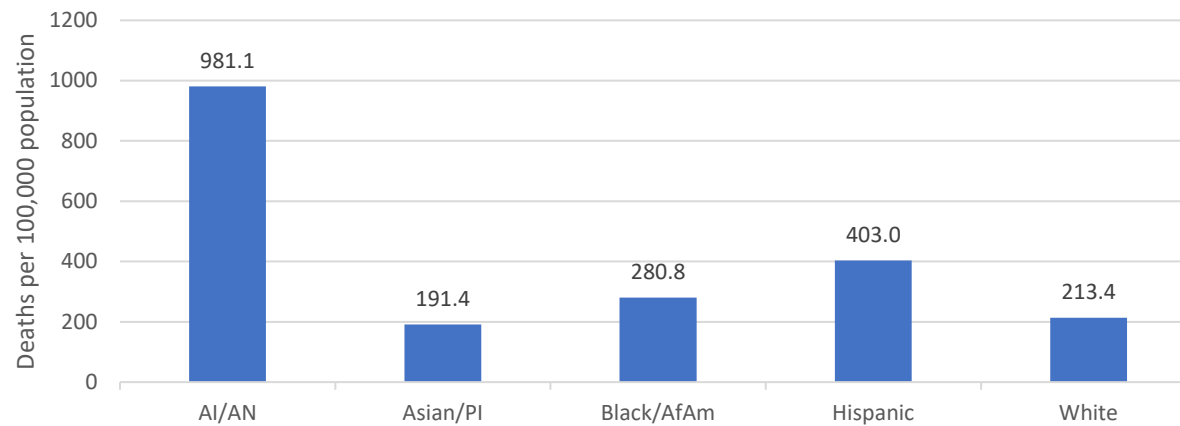
Mortality Rate per 100,000 Population by Age Group



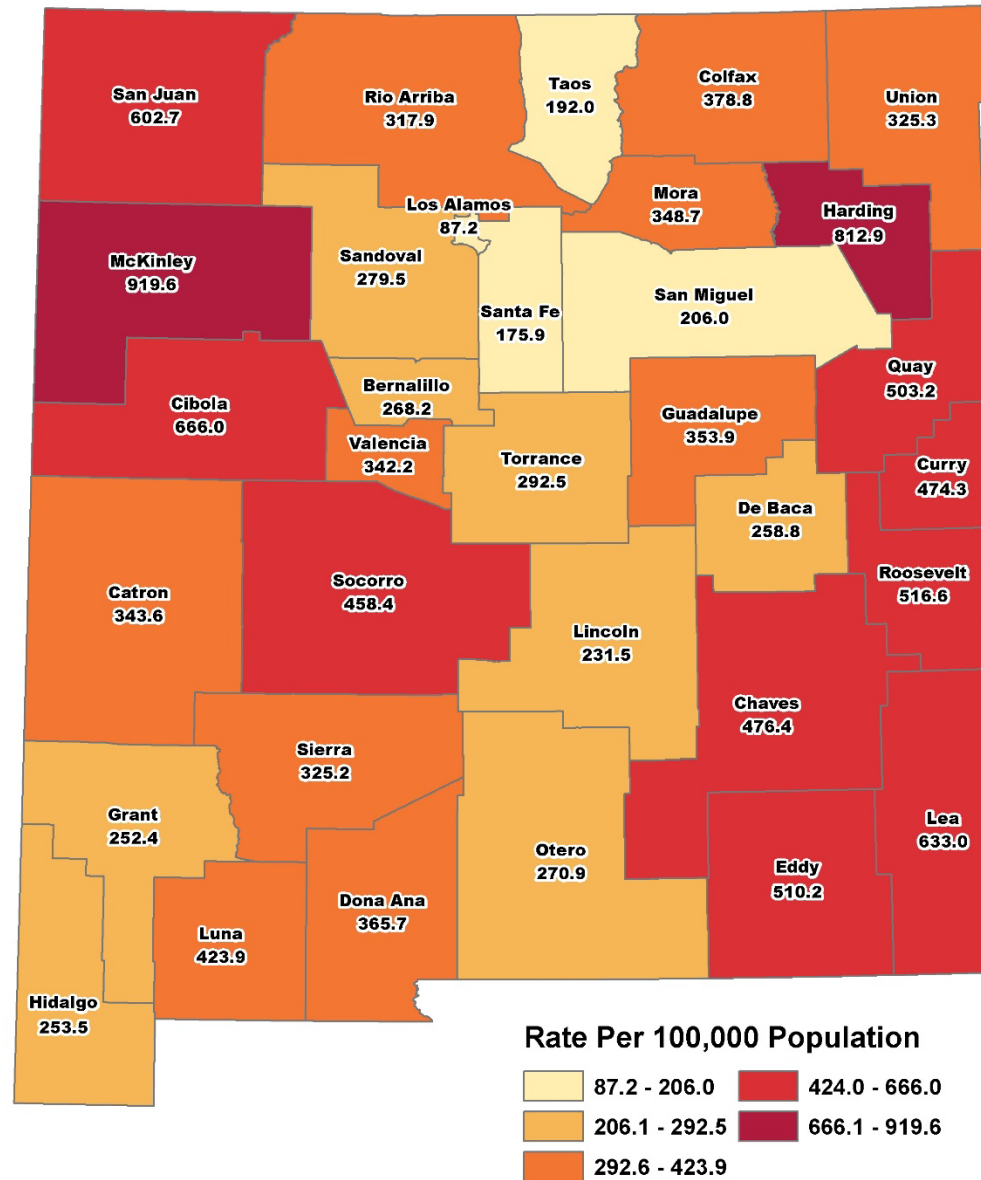
Age-adjusted Mortality Rate per 100,000 Population by Gender



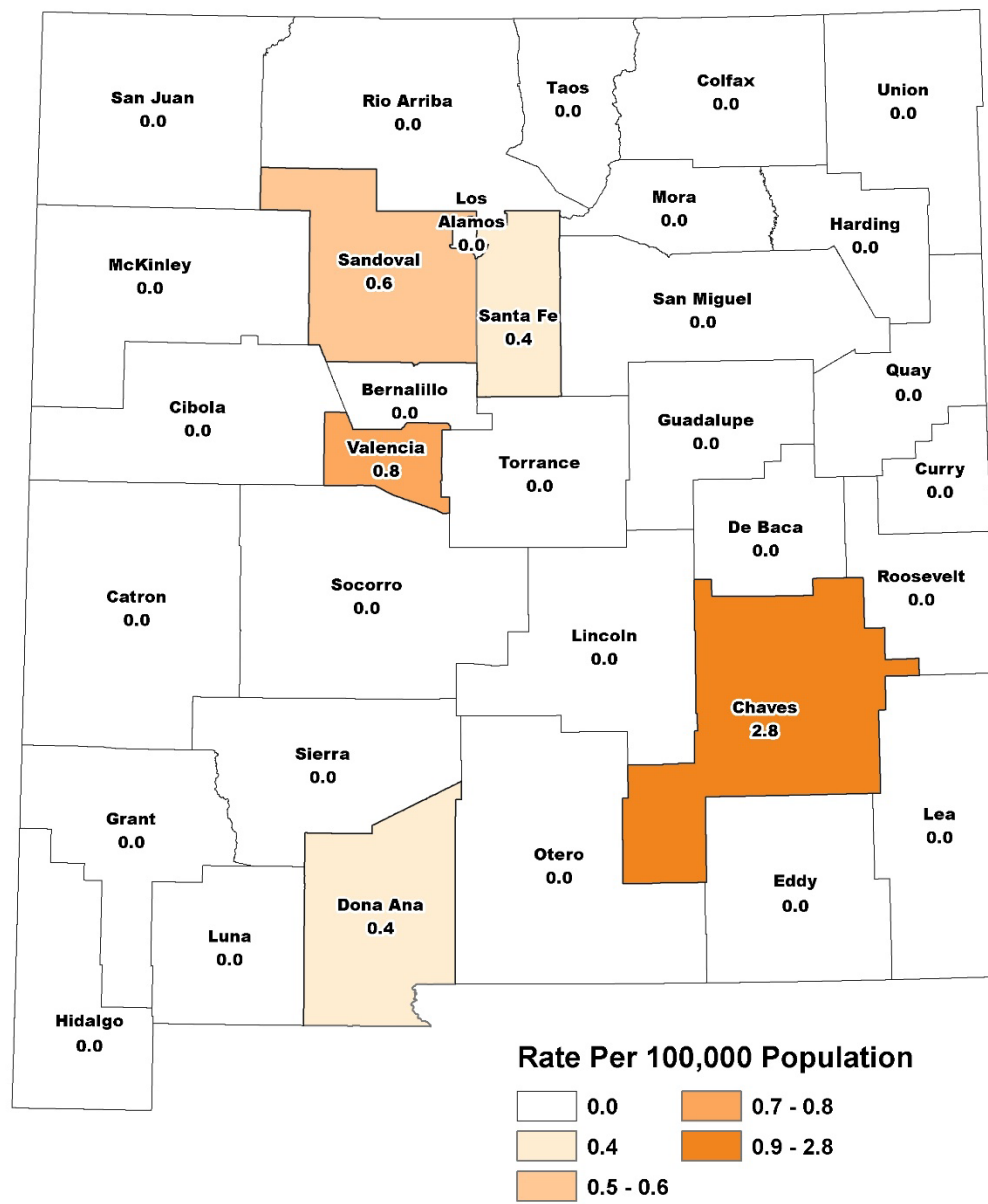
Age-adjusted Mortality rate per 100,000 Population by Race/Ethnicity



Age-adjusted Mortality Rate per 100,000 Population by New Mexico County

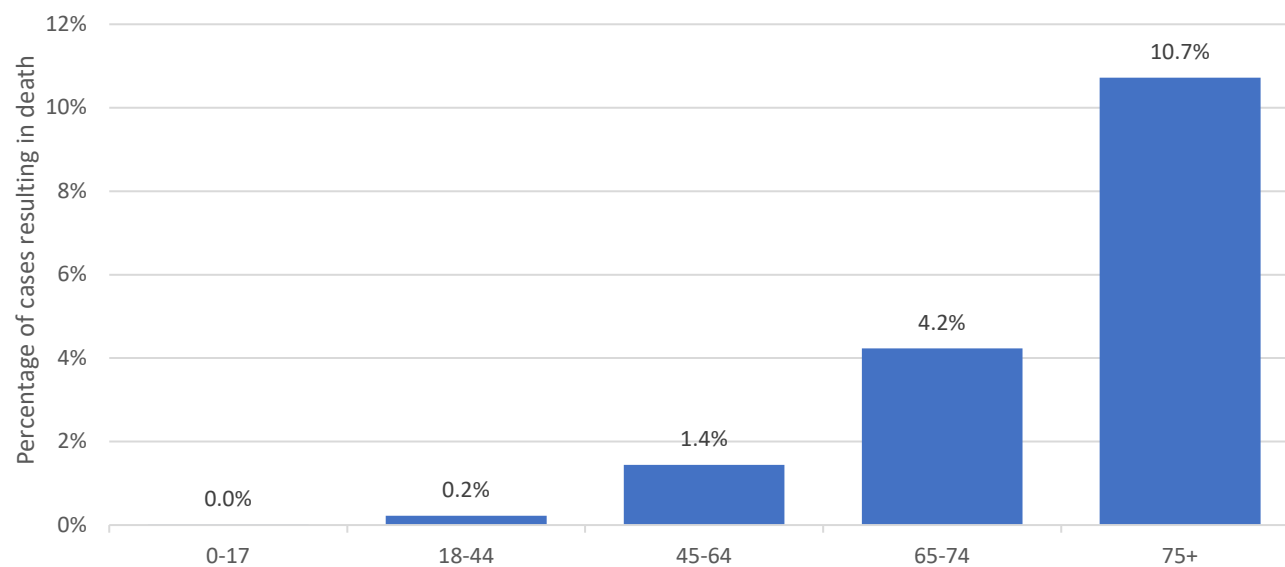


Age-adjusted Mortality Rate per 100,000 Population by County (last 14 days)

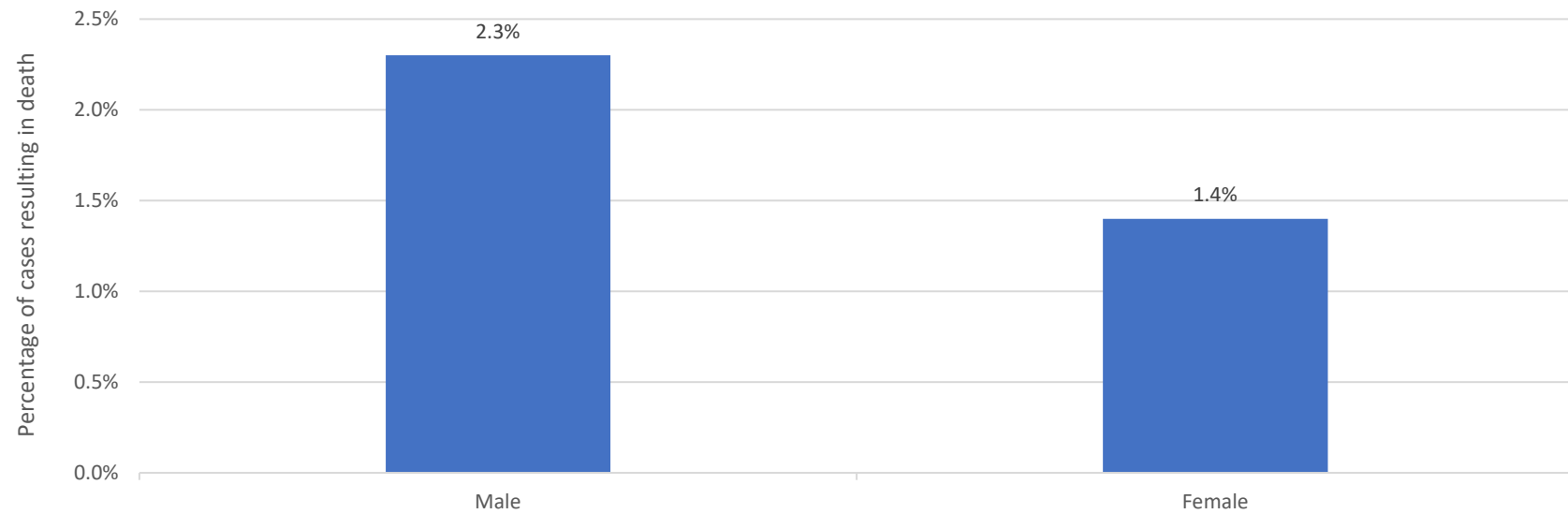


SECTION 3: CASE FATALITY RATES

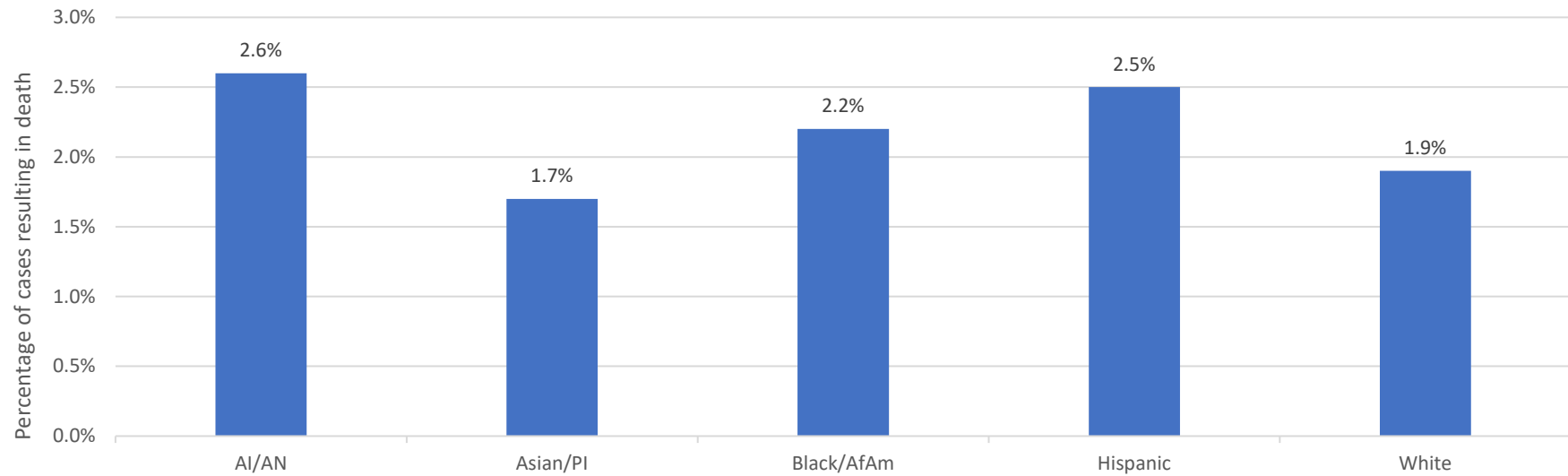
Case Fatality Rate by Age Group



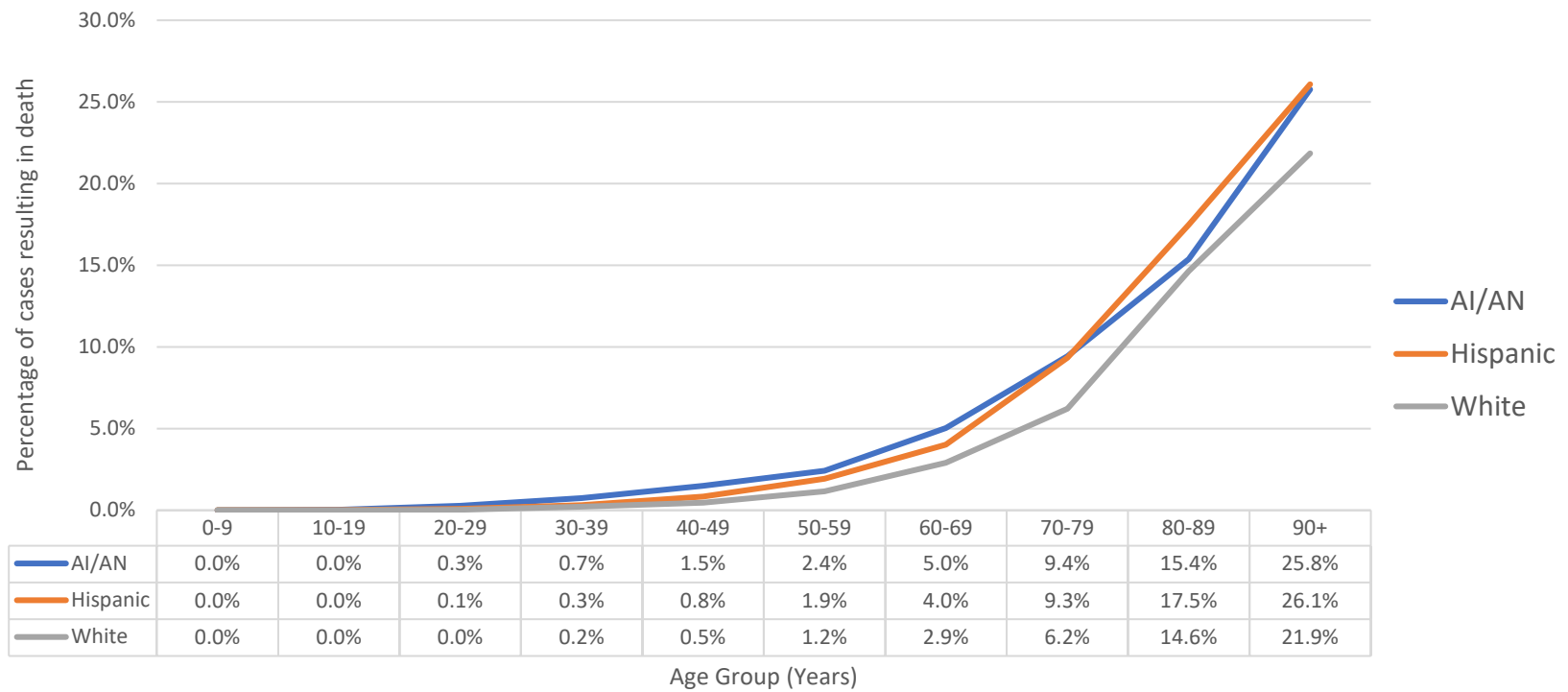
Age-adjusted* Case Fatality Rate by Gender



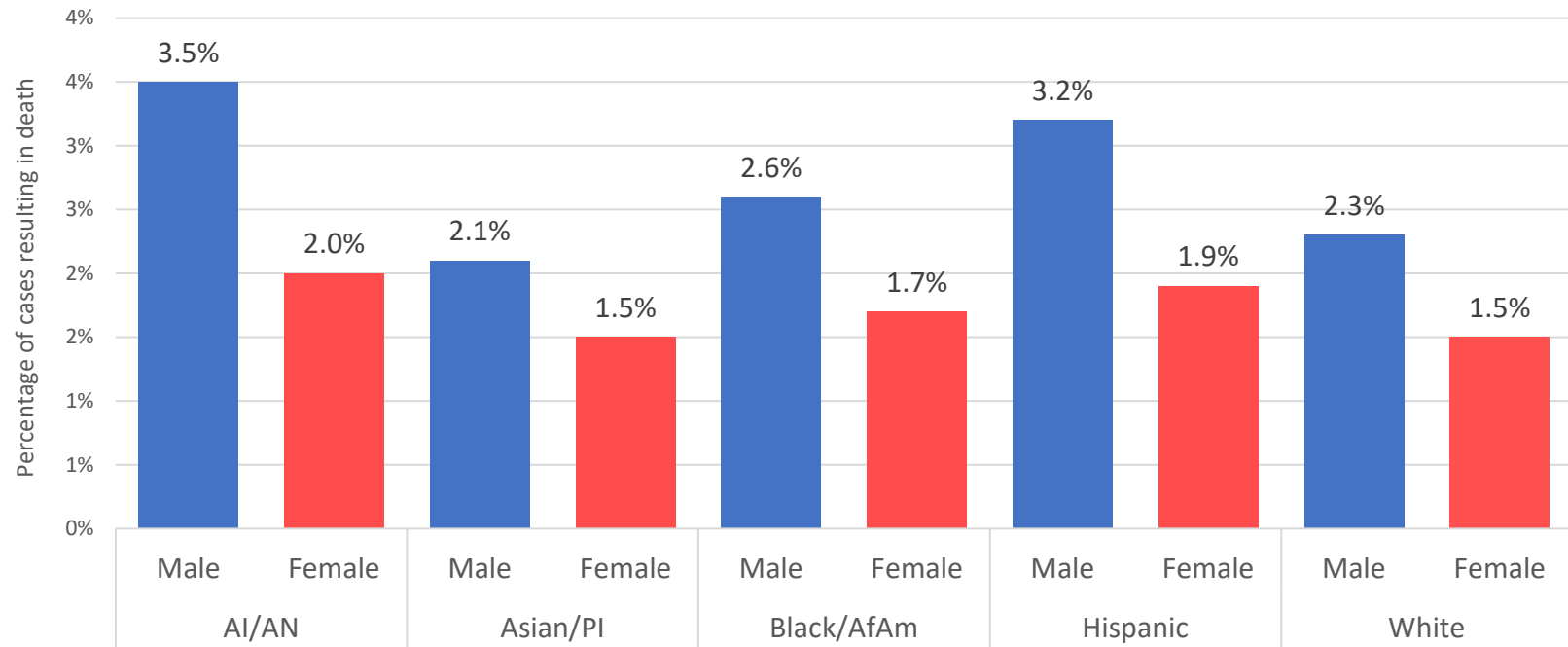
Age-adjusted* Case Fatality Rate by Race/Ethnicity



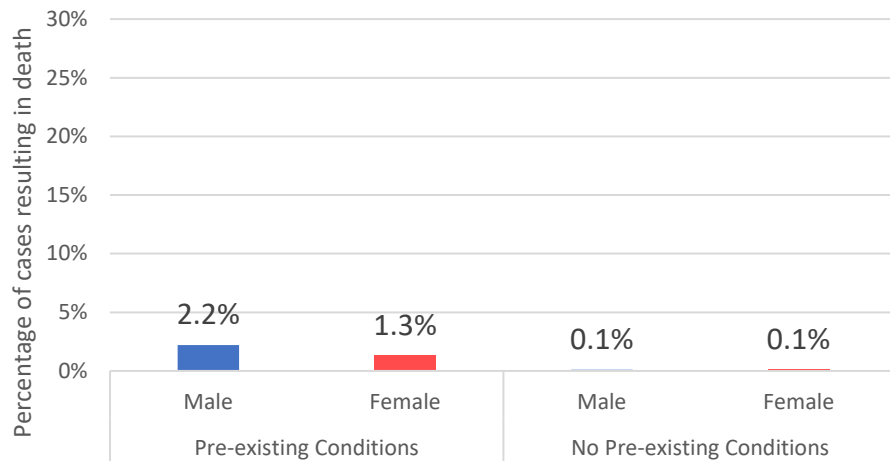
Case Fatality Rate by Race/Ethnicity and Age Group



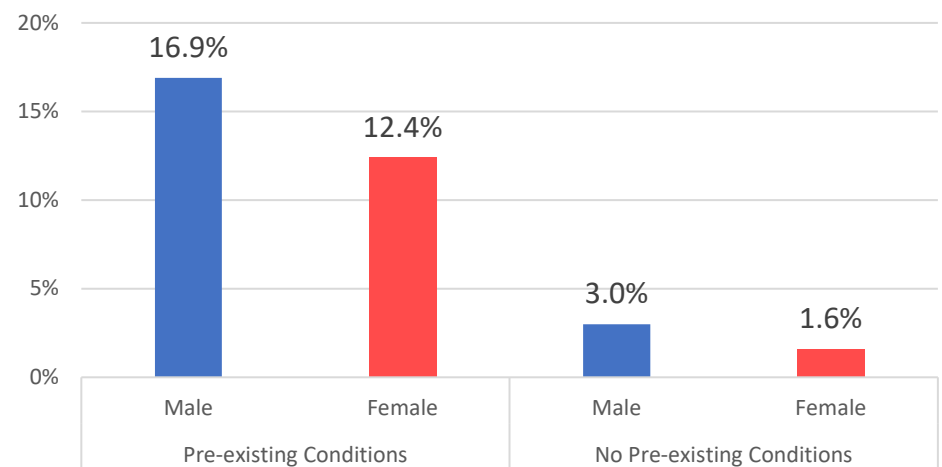
Age-adjusted* Case Fatality Rate by Race/Ethnicity and Gender



Age-adjusted* Case Fatality Rate by Gender, Underlying Conditions, and Hospitalization Status



Not Hospitalized



Hospitalized

Data Sources

- **COVID-19 data:** New Mexico Electronic Disease Surveillance System (NM-EDSS), Infectious Disease Epidemiology Bureau, Epidemiology and Response Division, New Mexico Department of Health.
- **Mortality data:** Bureau of Vital Records and Health Statistics, Epidemiology and Response Division, New Mexico Department of Health.
- **Population Estimates:** University of New Mexico, Geospatial and Population Studies (GPS) Program.
- **Age-adjustment:** US 2000 Standard Population Weights for mortality rates. US COVID-19 cases for case fatality rates.

Data Notes

- **The data reported in this weekly update may not match the daily numbers that are reported in the New Mexico Department of Health (NMDOH) press releases and/or the NMDOH COVID-19 data dashboard. This may be due to variation in the date and time of data extraction from NM-EDSS, corrections after quality assurance review, and differences in the exclusion criteria.**
- **New Mexico Electronic Disease Surveillance System (NM-EDSS).** Disease incidence data are derived from reports of notifiable infectious diseases. NMDOH relies on health care providers, laboratories, hospitals, clinics, institutions and individuals to report suspected and confirmed notifiable infectious diseases in accordance with New Mexico Administrative Code 7.4.3.13. Under-reporting can occur due to of lack of awareness about reporting requirements or lack of compliance with those requirements. Not all cases of infectious diseases can be detected for various reasons including lack of access to health care services, lack of laboratory testing or concerns about confidentiality. Specific and standardized national case definitions are used to classify disease reports by case status.
- **New Mexico COVID-19 Related Deaths.** Following the standardized surveillance case definition published by the Council of State and Territorial Epidemiologists, COVID-19 related deaths in NM include 1) deaths of confirmed cases, which have a documented positive RT-PCR test or rapid test for SARS-CoV-2; and 2) deaths based on vital records criteria in the absence of confirmatory laboratory evidence, which is a death certificate that lists COVID-19 disease or SARS-CoV-2 as a cause of death or a significant condition contributing to death. Death certificates may list multiple causes of death, with one single cause identified as the underlying cause of death defined as the condition that began the chain of events that ultimately led to the person's death. Death certificates may also list significant conditions contributing to death, defined as a condition or circumstance that contributed to the cause of death but did not result in the underlying cause nor participated in the causal pathway to the final or immediate cause of death. NM only includes natural deaths and excludes intentional and unintentional injury deaths among confirmed cases. Beginning January 1, 2022 deaths due to natural causes matched to a SARS-CoV-2 positive test result within 30 days of the date of death are included as COVID-19 related deaths even when COVID is not listed on the death certificate. From May 12, 2020 through February 9, 2021 12 COVID-19 deaths were reported publicly following notification of a COVID-related death from a facility to NMDOH before receipt of the death certificate. Because death reporting is based on death

certificates and we did not subsequently receive a death certificate associated with these individuals, we are removing these 12 deaths as of June 13, 2022, from the cumulative death count for COVID-19 deaths in NM.

- **New Mexico Population Estimates.** All population estimates apply to July 1 of 2019. Estimates include decimal fractions. The sum of population subgroup estimates may not exactly equal the overall state population estimate due to rounding error. Population estimates for previous years are occasionally revised as new information becomes available. When publishing trend data, always be sure that your rates for earlier years match current rates on NM-IBIS that have been calculated with the most up-to-date population estimates.
- **Race/ethnicity.** Race and ethnicity are reported as a single variable, race/ethnicity, according to the selection of the case. Any case who is Hispanic is in the Hispanic category and all other races are non-Hispanic.
- **Mortality rate per 100,000 population.** A basic measure of disease-specific hospitalization frequency is a rate, which takes into account the number of deaths and the population size. It is helpful in making public health decisions for a given population, relative to another population regardless of size.
- **Age-adjusted mortality or case fatality rate per 100,000 population.** The age-distribution of a population (the number of people in particular age categories) can change over time and can be different in different geographic areas. The use of age-adjusted rates permits a valid comparison among populations. It ensures that the differences in deaths from one population to another are not due to differences in the age distribution of the populations being compared.
- **Adjustment to the baseline death count.** On 5/24/2021, NMDOH released the results of an audit of COVID-19 related deaths. The net result was the addition of 113 deaths based on death certification which included COVID-19 as cause of death.