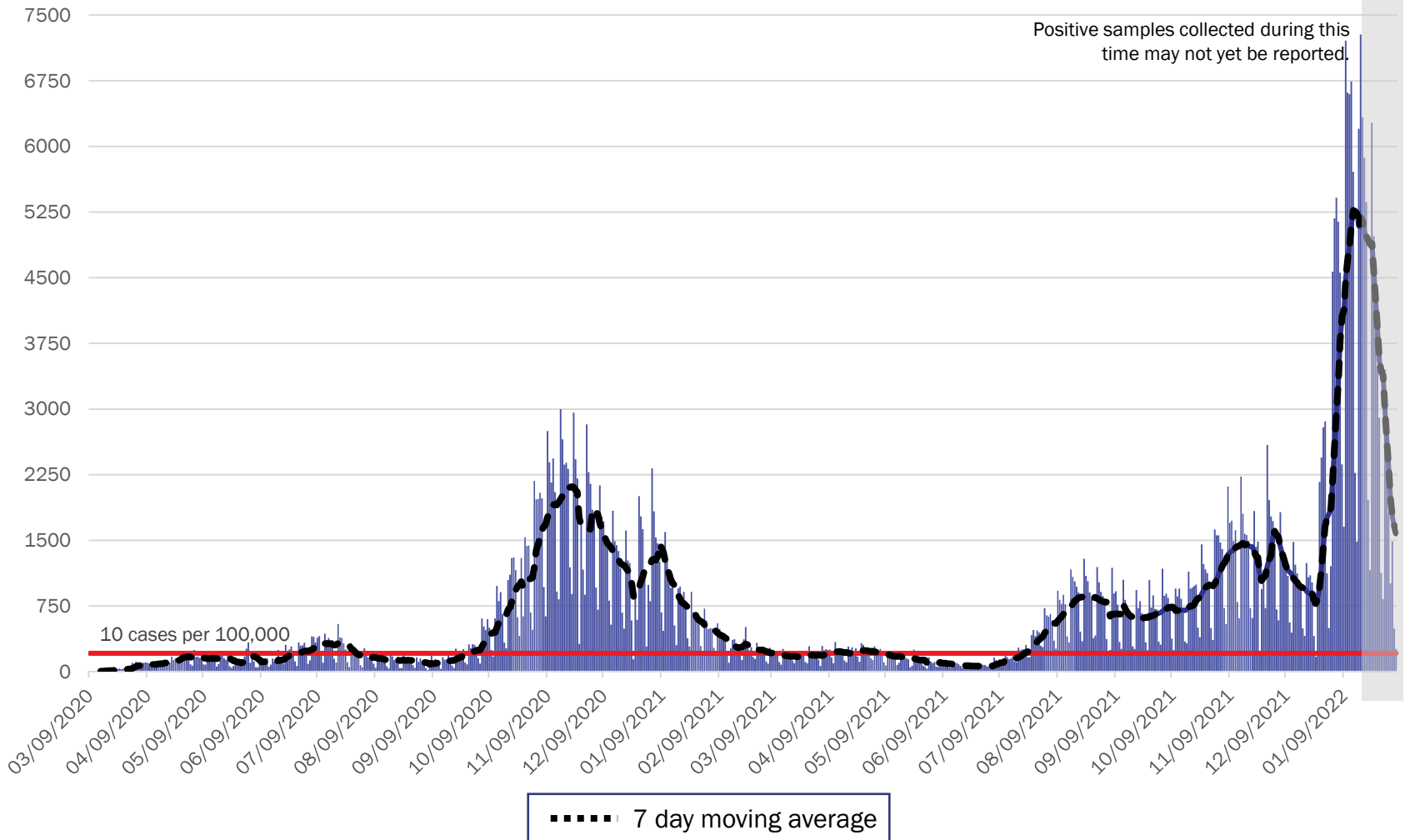


COVID-19 in New Mexico: Epidemiologic and Modeling Update

February 7, 2022

New Mexico COVID-19 Cases by Date of Specimen Collection February 7, 2022



Source: Infectious Disease Epidemiology Bureau, Epidemiology and Response Division 02.07.2022, New Mexico Department of Health.



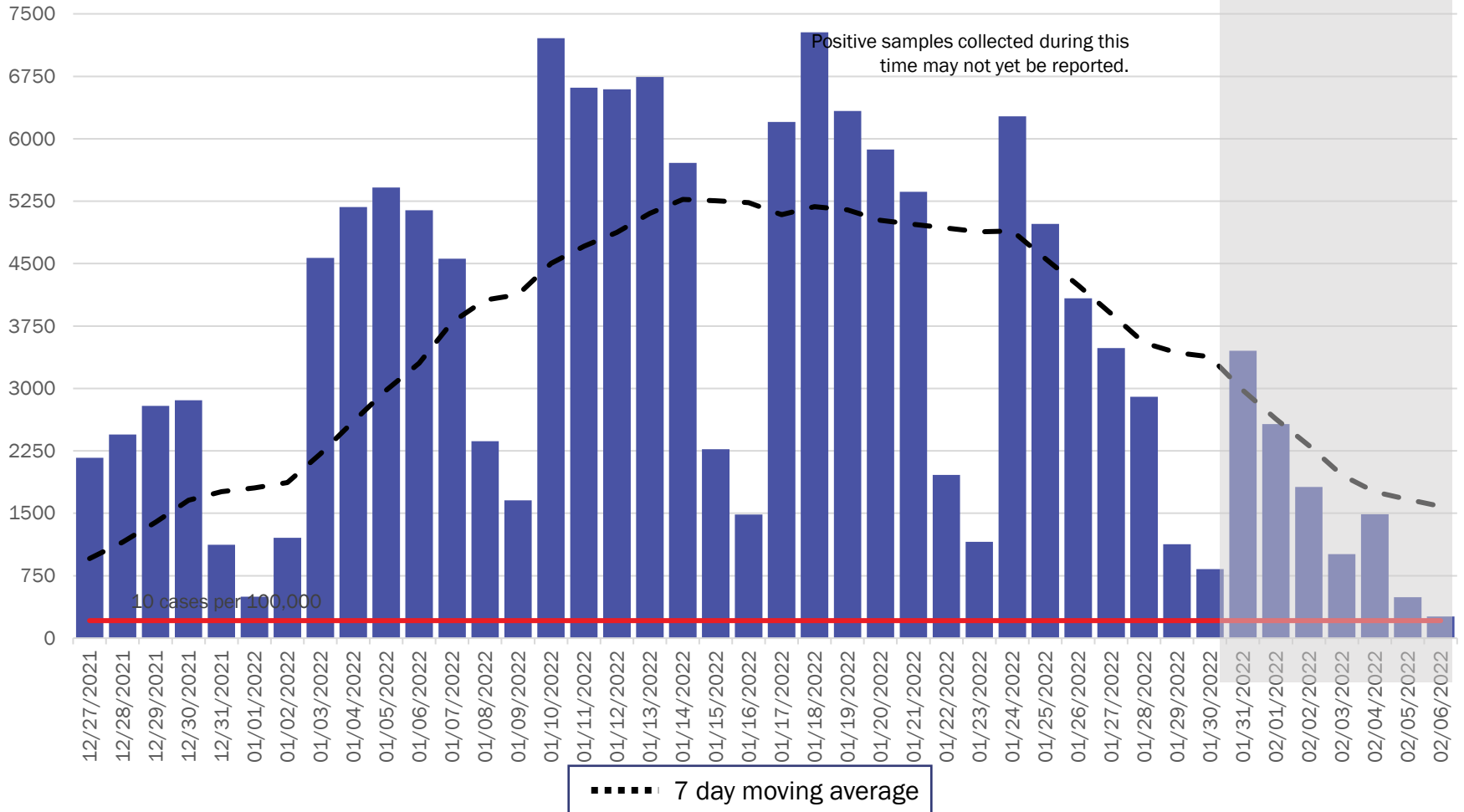
Investing for tomorrow, delivering today.

1190 S. St. Francis Drive • Santa Fe, NM 87505 • Phone: 505-827-2613 • Fax: 505-827-2530 • nmhealth.org

New Mexico COVID-19 Cases by Date of Specimen Collection

Recent 6 Week View

February 7, 2022



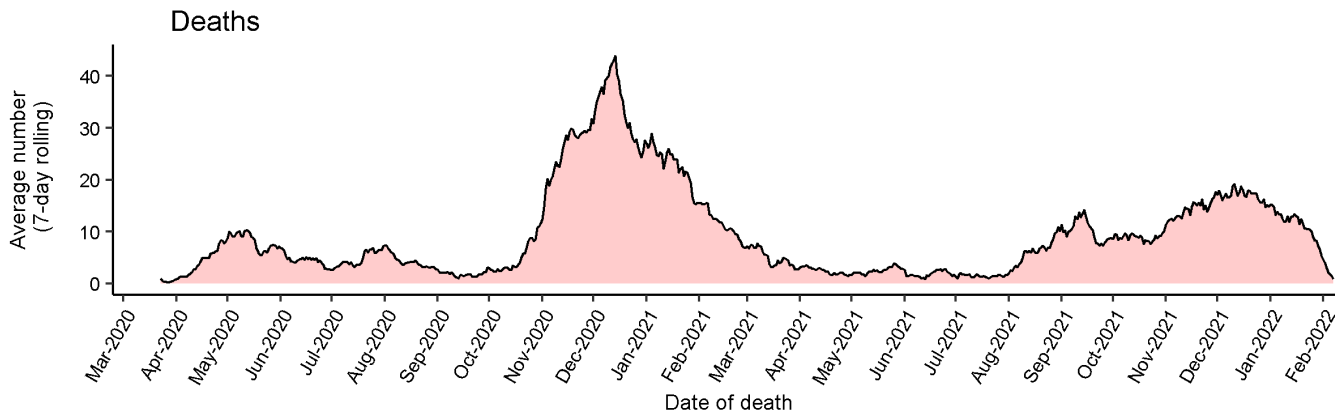
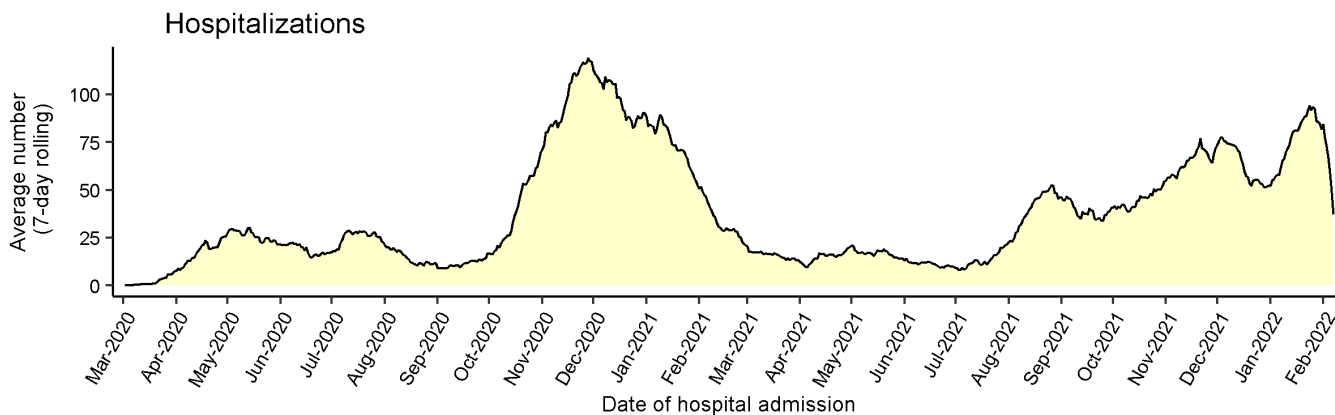
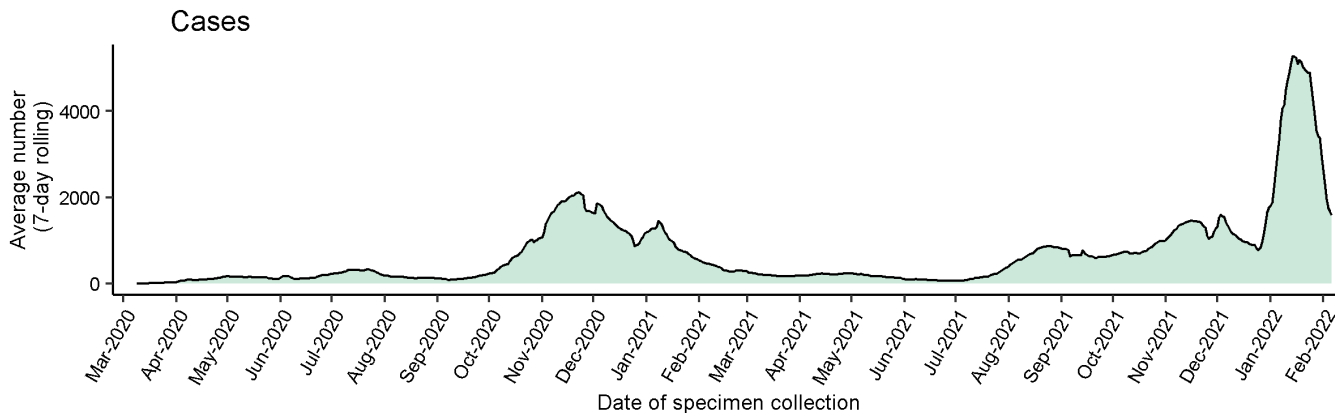
Source: Infectious Disease Epidemiology Bureau, Epidemiology and Response Division 02.07.2022, New Mexico Department of Health.



Investing for tomorrow, delivering today.

1190 S. St. Francis Drive • Santa Fe, NM 87505 • Phone: 505-827-2613 • Fax: 505-827-2530 • nmhealth.org

Average number (7-day rolling average) of cases, hospitalizations, and deaths over time

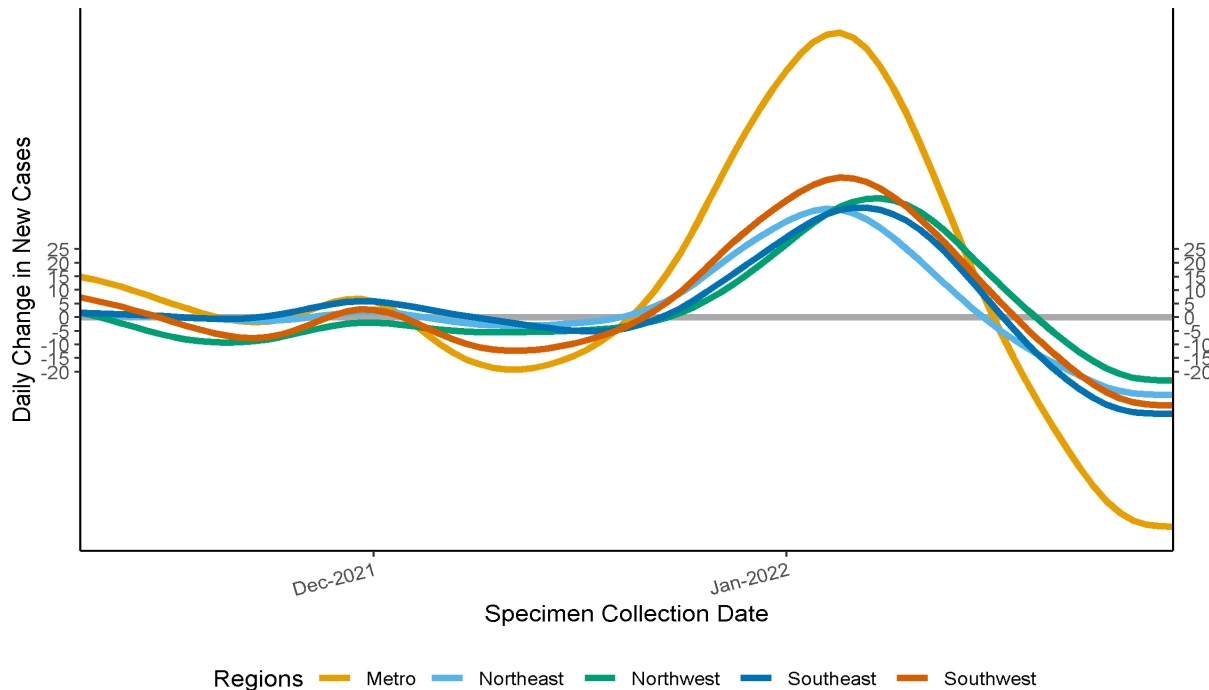


Note: Cases, hospitalizations, and deaths may not yet be reported in 7 or more days.

As of 02.07.22

Epidemic Growth Acceleration

Daily Change in New COVID-19 Cases, by New Mexico Region, through January 31, 2022



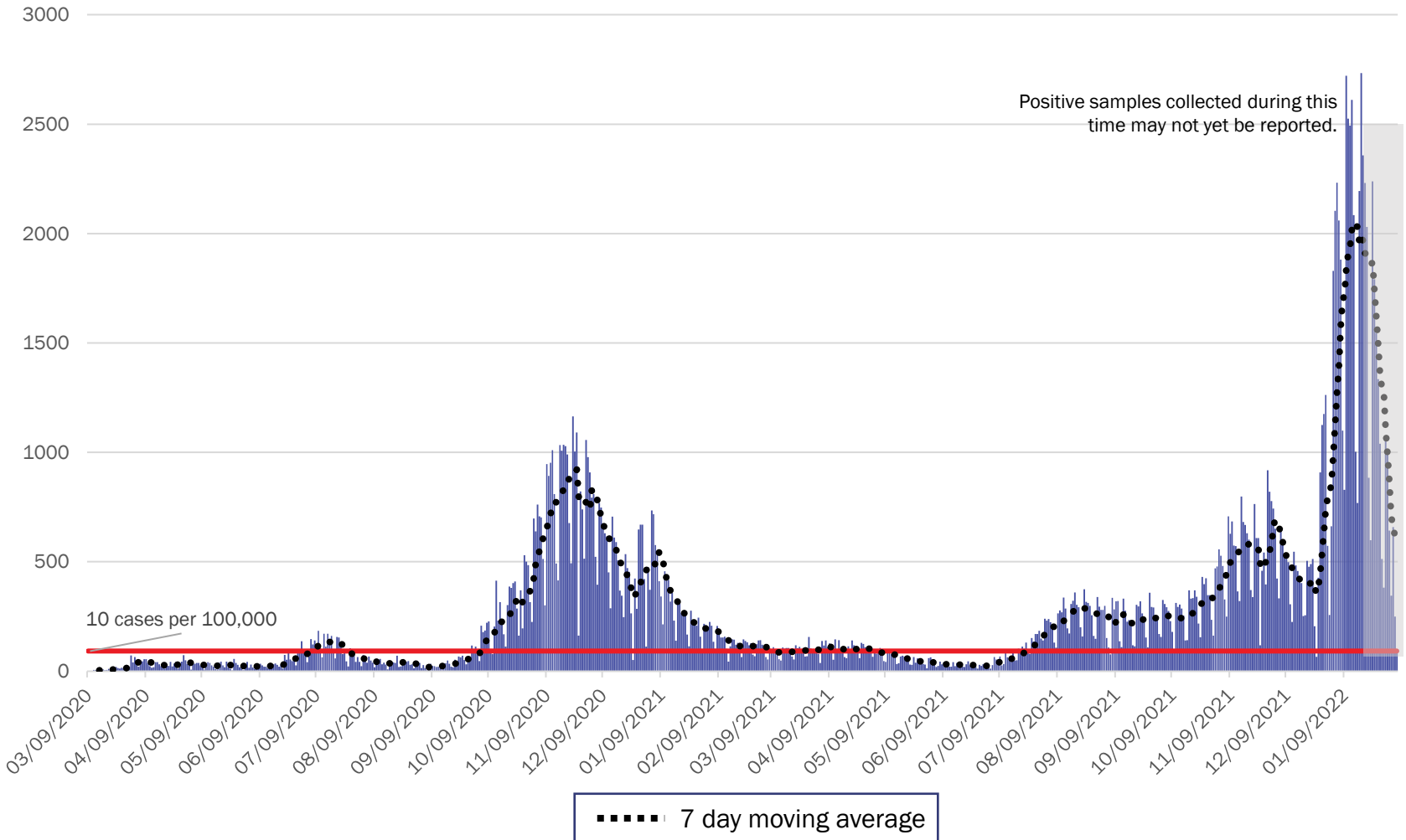
*

Region	Growth Acceleration January 24, 2022	Growth Acceleration January 31, 2022
1 Metro	-61.9	-76.8
2 Northeast	-23.7	-28.4
3 Northwest	-16.1	-23.2
4 Southeast	-29.6	-35.4
5 Southwest	-24.6	-32.3

*Positive specimens collected in the last 7 or more days may not yet be reported to NMDOH. Case counts and growth acceleration during this time are underestimated.

Source: Infectious Disease Epidemiology Bureau, Epidemiology and Response Division 02.07.2022, New Mexico Department of Health.

Metro Region Case Count by Collection Date with 7 Day Moving Average February 7, 2022



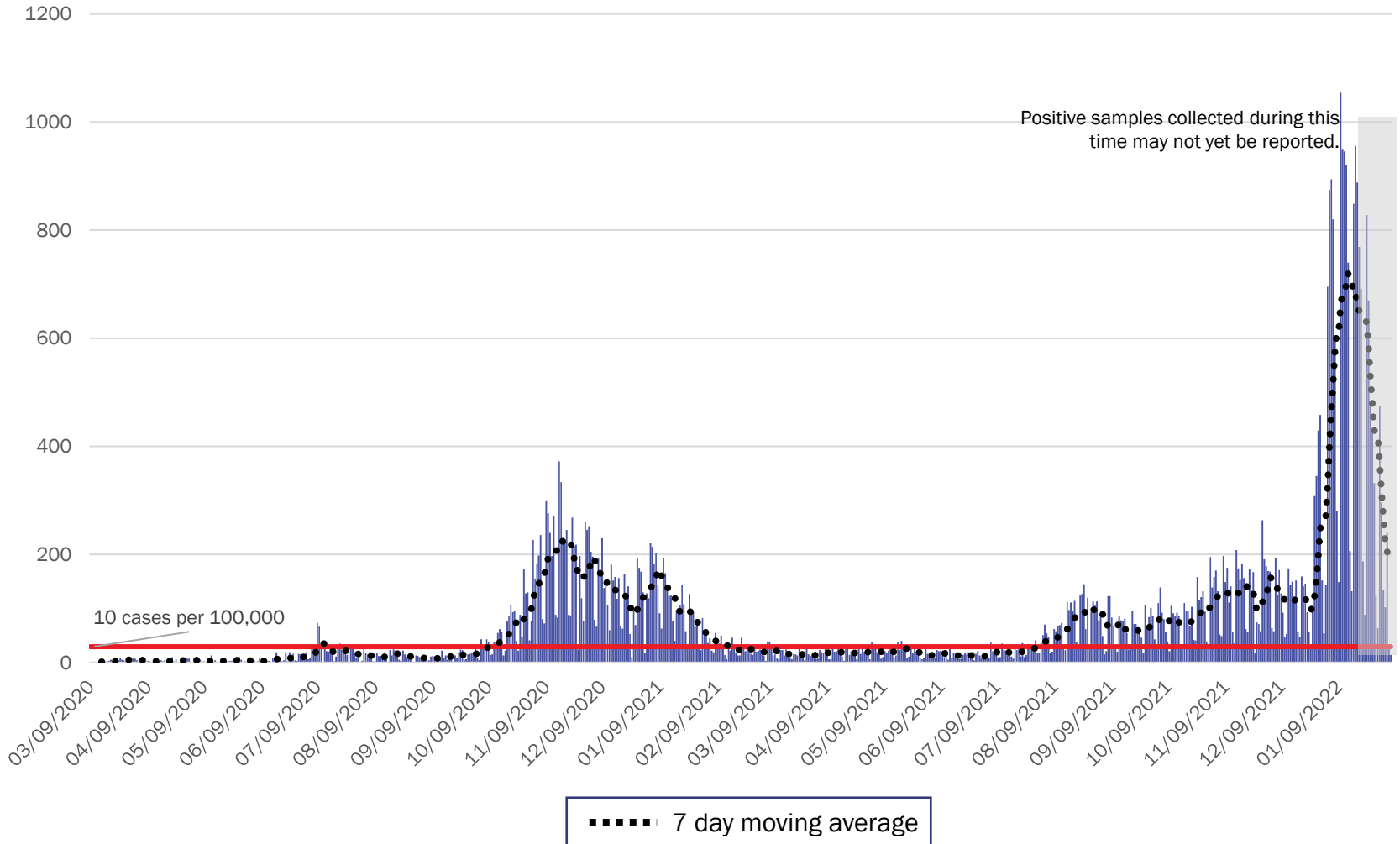
Source: Infectious Disease Epidemiology Bureau, Epidemiology and Response Division 02.07.2022, New Mexico Department of Health.



Investing for tomorrow, delivering today.

1190 S. St. Francis Drive • Santa Fe, NM 87505 • Phone: 505-827-2613 • Fax: 505-827-2530 • nmhealth.org

Northeast Region Case Count by Collection Date with 7 Day Moving Average February 7, 2022



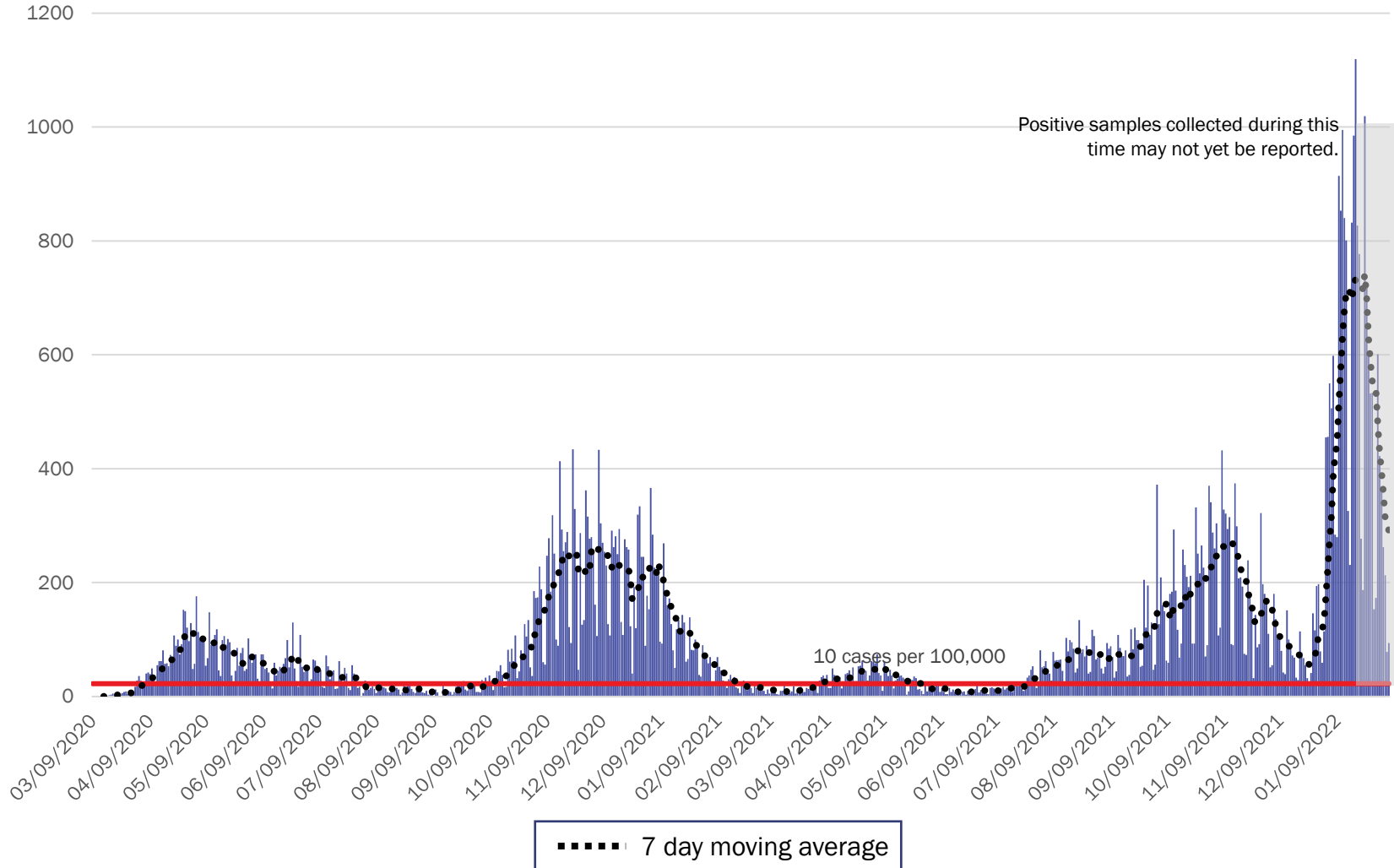
Source: Infectious Disease Epidemiology Bureau, Epidemiology and Response Division 02.07.2022, New Mexico Department of Health.



Investing for tomorrow, delivering today.

1190 S. St. Francis Drive • Santa Fe, NM 87505 • Phone: 505-827-2613 • Fax: 505-827-2530 • nmhealth.org

Northwest Region Case Count by Collection Date with 7 Day Moving Average February 7, 2022



Source: Infectious Disease Epidemiology Bureau, Epidemiology and Response Division 02.07.2022, New Mexico Department of Health.



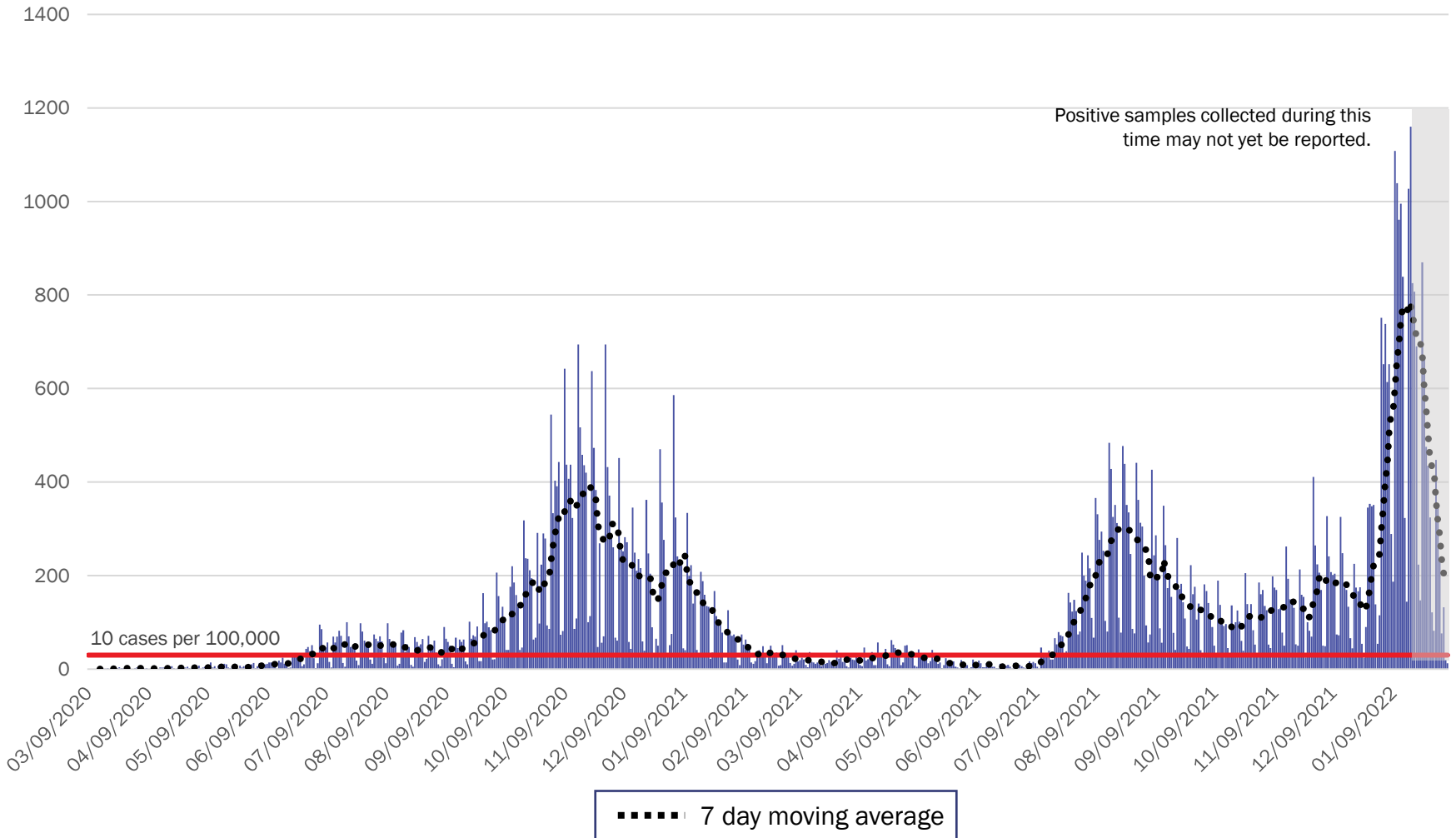
Investing for tomorrow, delivering today.



1190 S. St. Francis Drive • Santa Fe, NM 87505 • Phone: 505-827-2613 • Fax: 505-827-2530 • nmhealth.org

Southeast Region Case Count by Collection Date with 7 Day Moving Average

February 7, 2022



Source: Infectious Disease Epidemiology Bureau, Epidemiology and Response Division 02.07.2022, New Mexico Department of Health.

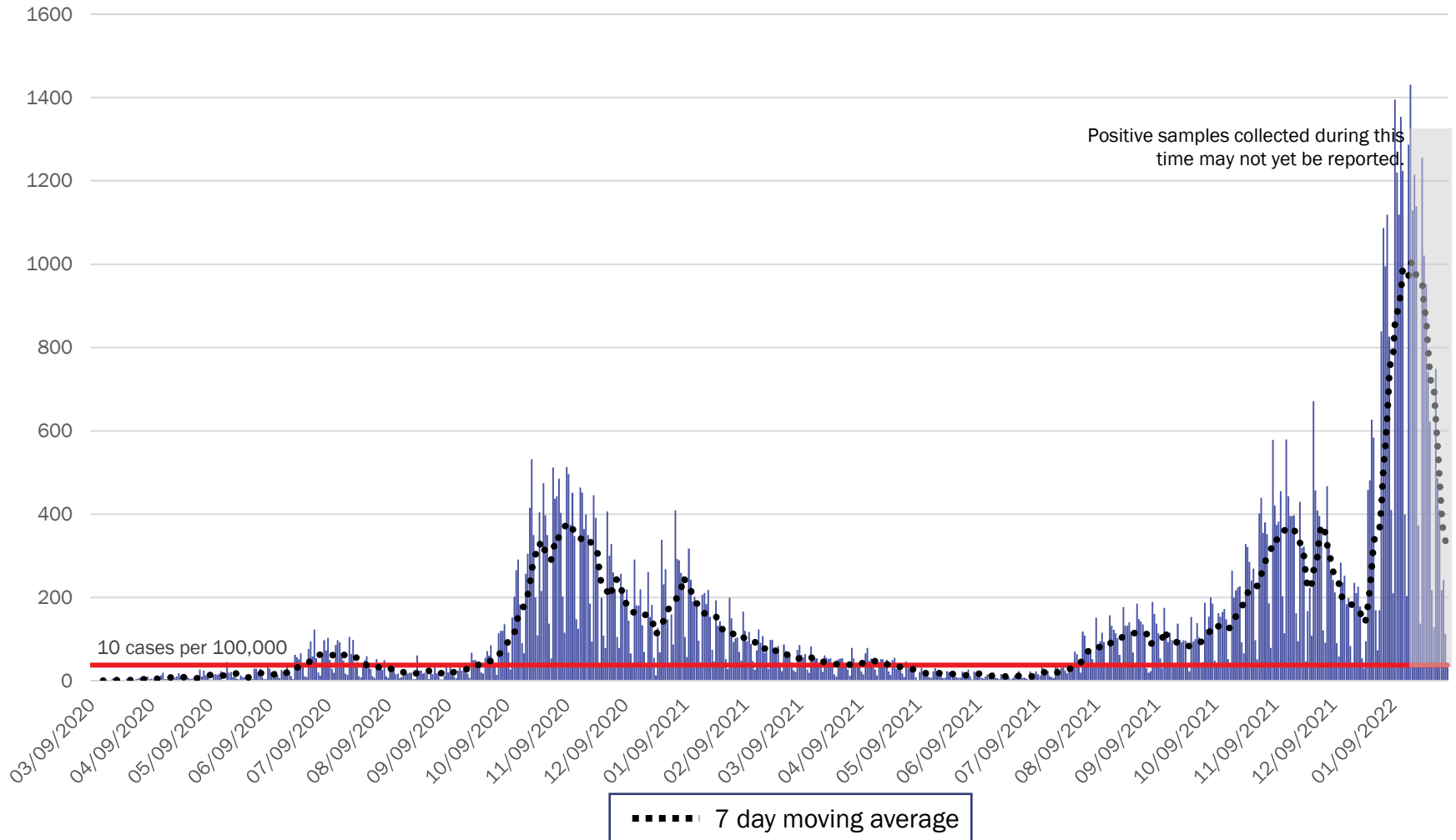


Investing for tomorrow, delivering today.



1190 S. St. Francis Drive • Santa Fe, NM 87505 • Phone: 505-827-2613 • Fax: 505-827-2530 • nmhealth.org

Southwest Region Case Count by Collection Date with 7 Day Moving Average February 7, 2022



Source: Infectious Disease Epidemiology Bureau, Epidemiology and Response Division 02.07.2022, New Mexico Department of Health.



Investing for tomorrow, delivering today.



1190 S. St. Francis Drive • Santa Fe, NM 87505 • Phone: 505-827-2613 • Fax: 505-827-2530 • nmhealth.org

New Mexico Status Updates

- Case count: Statewide, daily case counts are decreasing.
- Hospitalizations: COVID-19 hospitalizations are decreasing.
- Deaths: COVID-19 deaths are decreasing.

For more information, please visit the [Epidemiology Reports](https://cv.nmhealth.org/epidemiology-reports/) page on the NMDOH COVID-19 website: <https://cv.nmhealth.org/epidemiology-reports/>