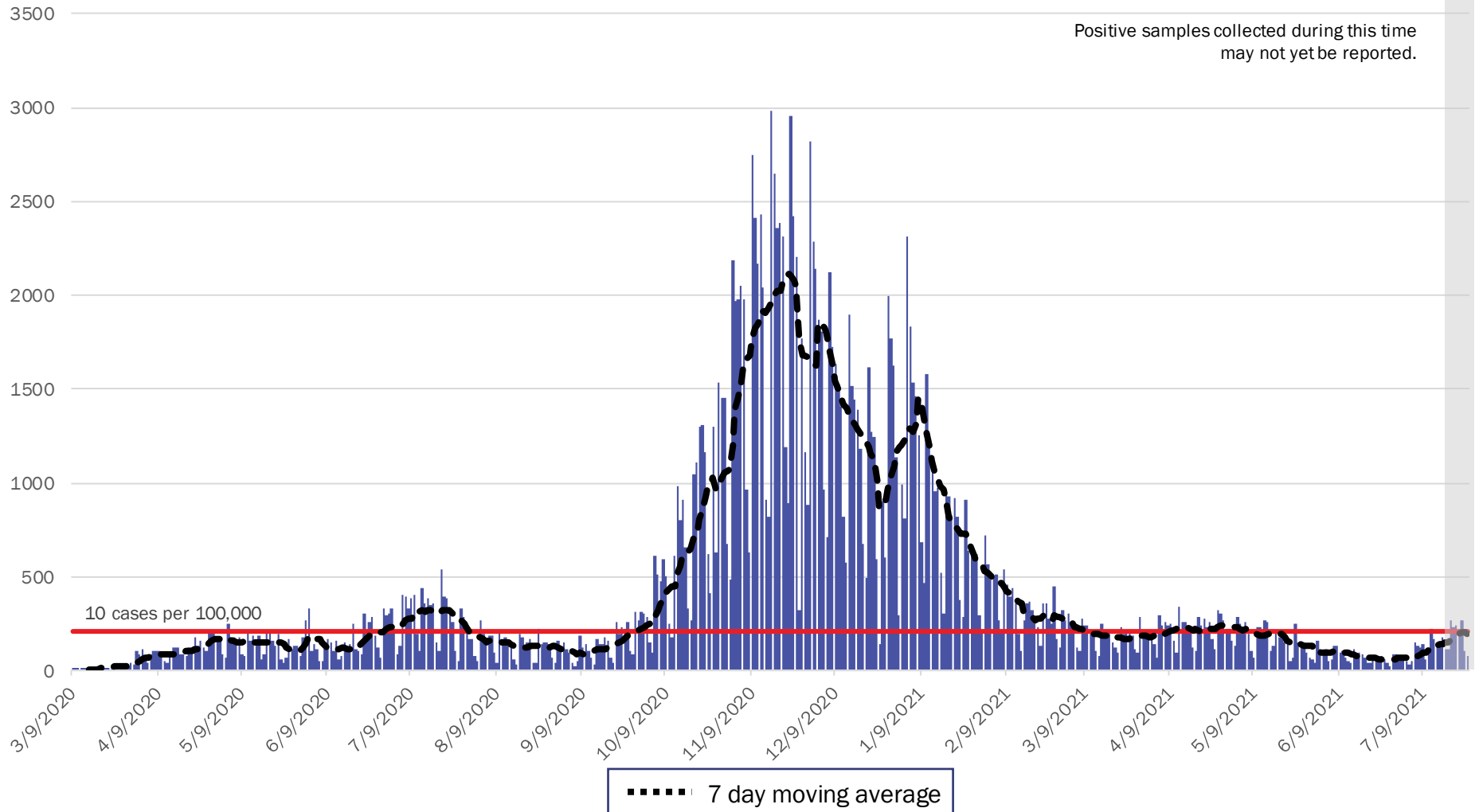


# COVID-19 in New Mexico: Epidemiologic and Modeling Update

July 26, 2021

# New Mexico COVID-19 Cases by Date of Specimen Collection July 26, 2021



Source: Infectious Disease Epidemiology Bureau, Epidemiology and Response Division 7.26.2021, New Mexico Department of Health.



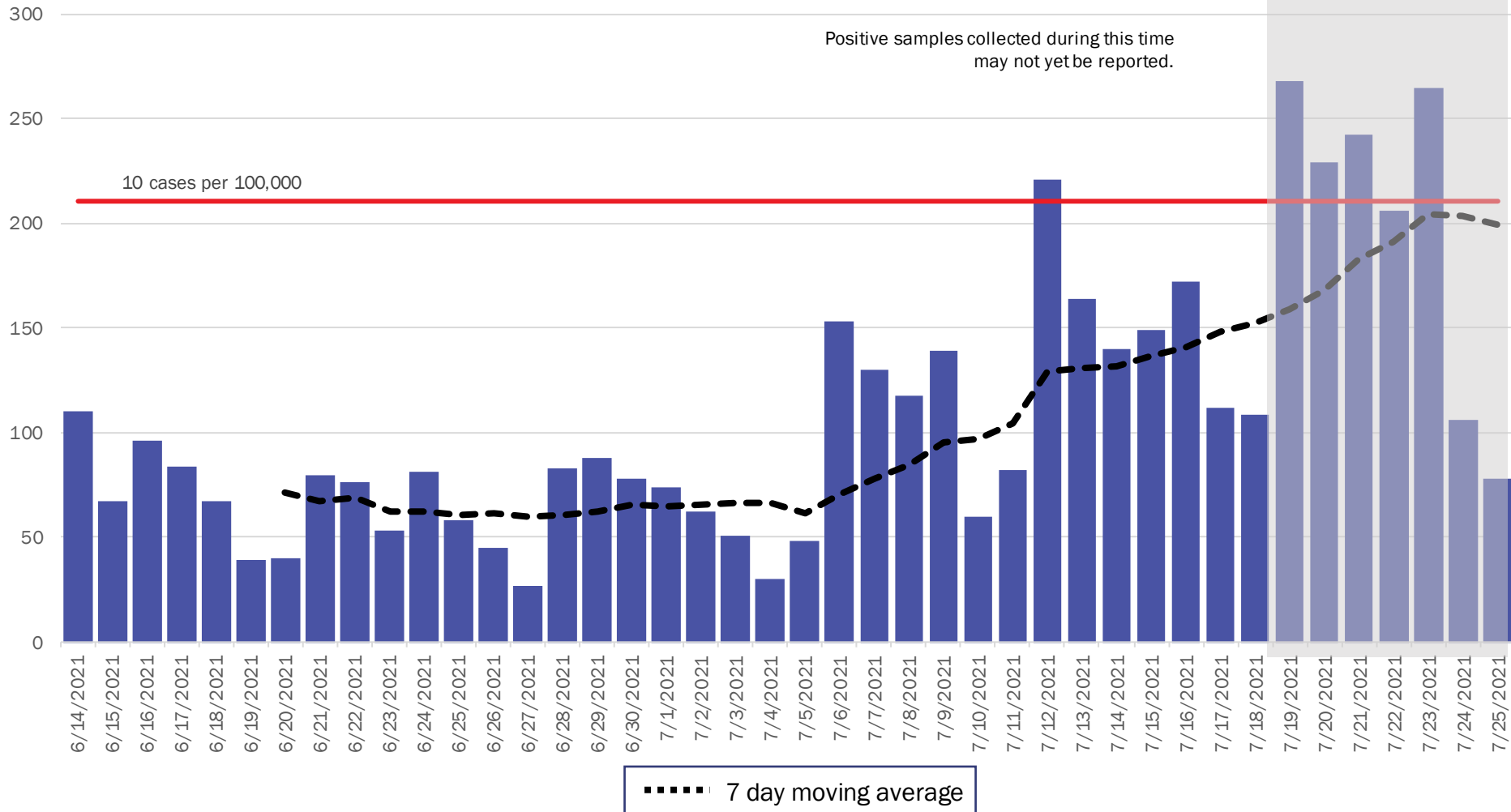
*Investing for tomorrow, delivering today.*

1190 S. St. Francis Drive • Santa Fe, NM 87505 • Phone: 505-827-2613 • Fax: 505-827-2530 • [nmhealth.org](http://nmhealth.org)

# New Mexico COVID-19 Cases by Date of Specimen Collection

## Recent 6 Week View

### July 26, 2021



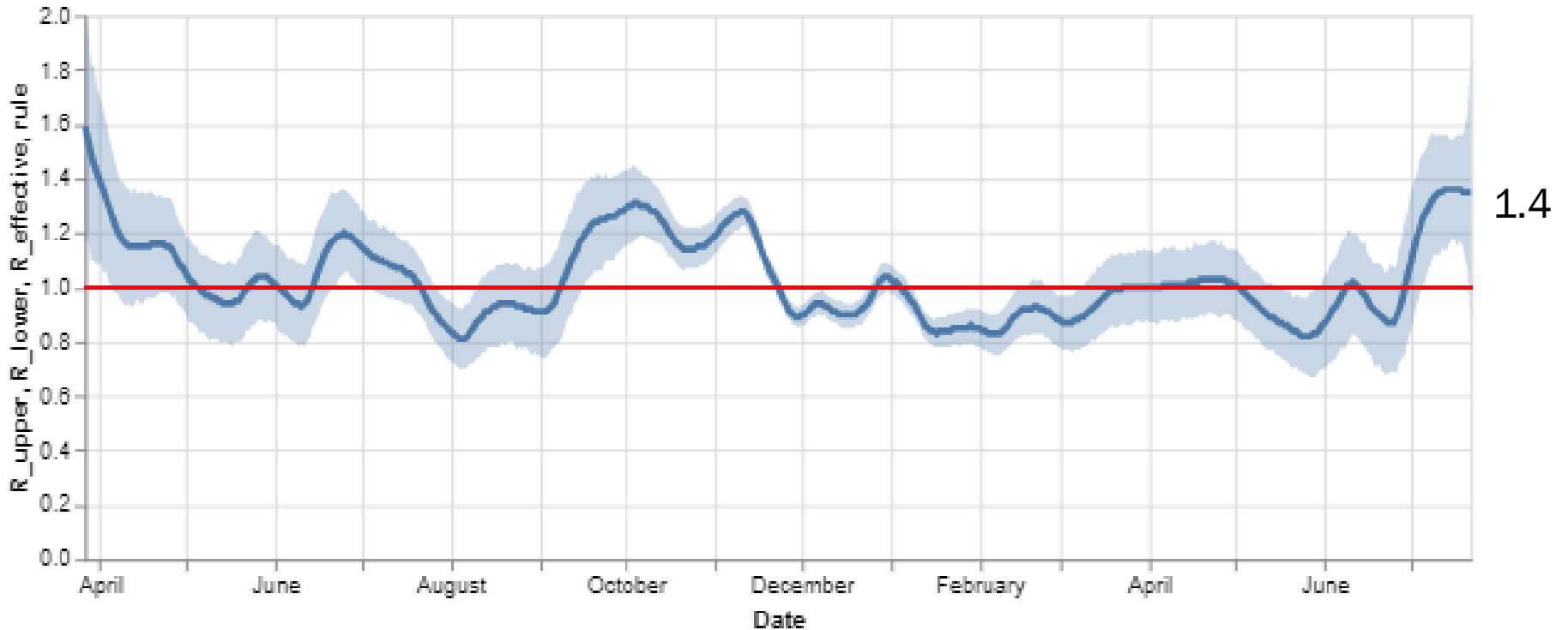
Source: Infectious Disease Epidemiology Bureau, Epidemiology and Response Division 7.26.2021, New Mexico Department of Health.



*Investing for tomorrow, delivering today.*

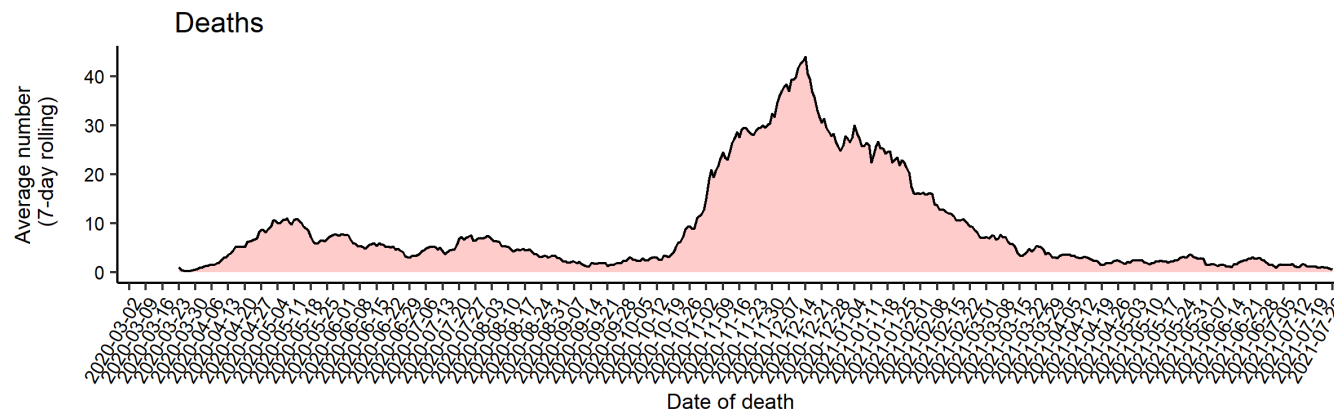
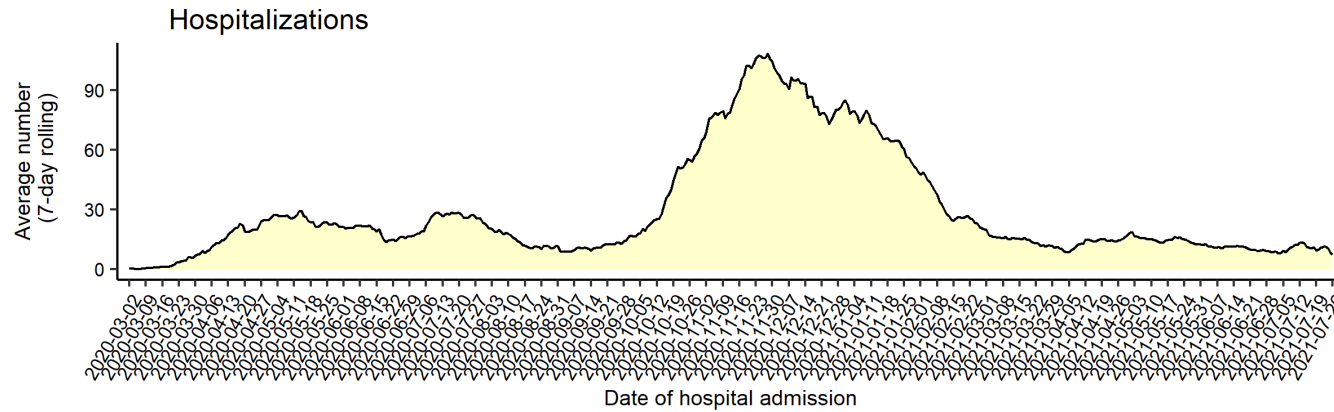
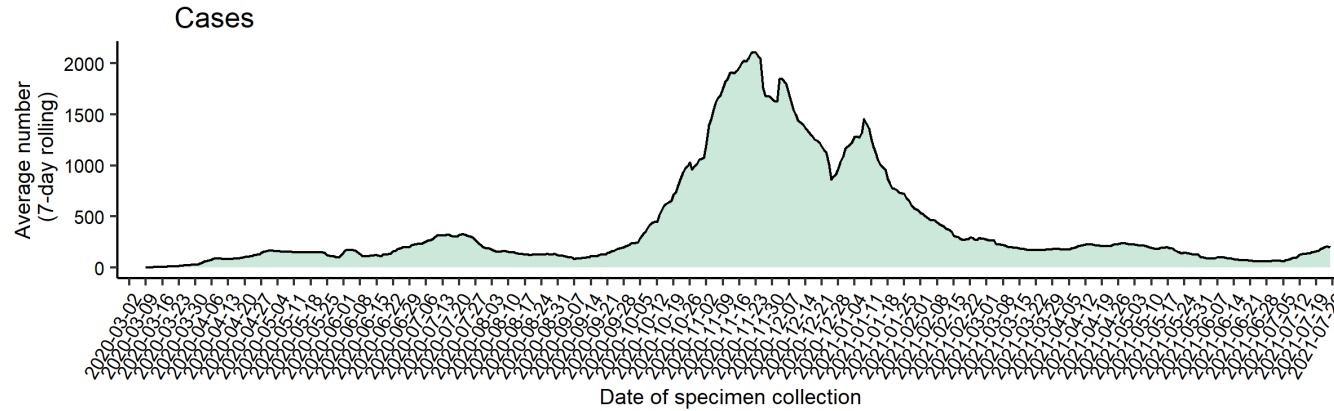
1190 S. St. Francis Drive • Santa Fe, NM 87505 • Phone: 505-827-2613 • Fax: 505-827-2530 • nmhealth.org

# Statewide R-effective has increased to 1.4



Courtesy of Presbyterian Healthcare Services— July 22, 2021.

# Average number (7-day rolling average) of cases, hospitalizations, and deaths over time



*Note: Cases, hospitalizations, and deaths may not yet be reported in 7 or more days.*

*As of 7/26/21*



**Key**

Low Level Endemic  
 $<1.0$

Approaching Low Level Endemic  
 $1.0$

Requiring further mitigation  
 $>1.0$

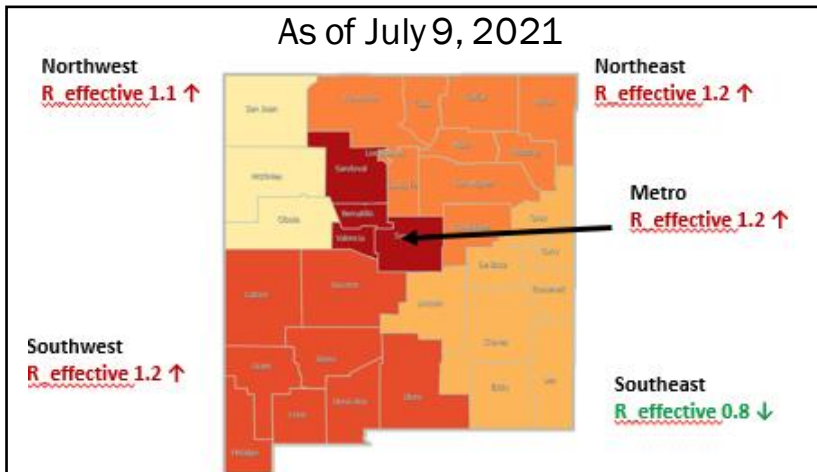
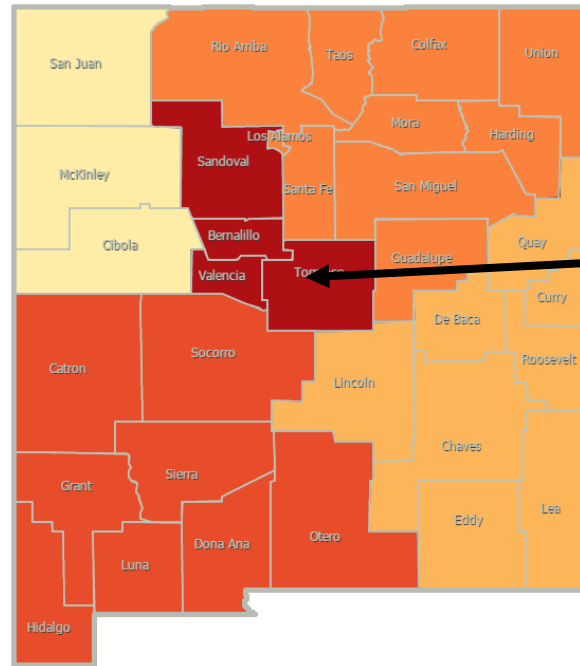
**Northwest**  
 $R_{\text{effective}} 1.3 \uparrow$

**Northeast**  
 $R_{\text{effective}} 1.1 \uparrow$

**Metro**  
 $R_{\text{effective}} 1.3 \uparrow$

**Southwest**  
 $R_{\text{effective}} 1.4 \uparrow$

**Southeast**  
 $R_{\text{effective}} 1.6 \uparrow$

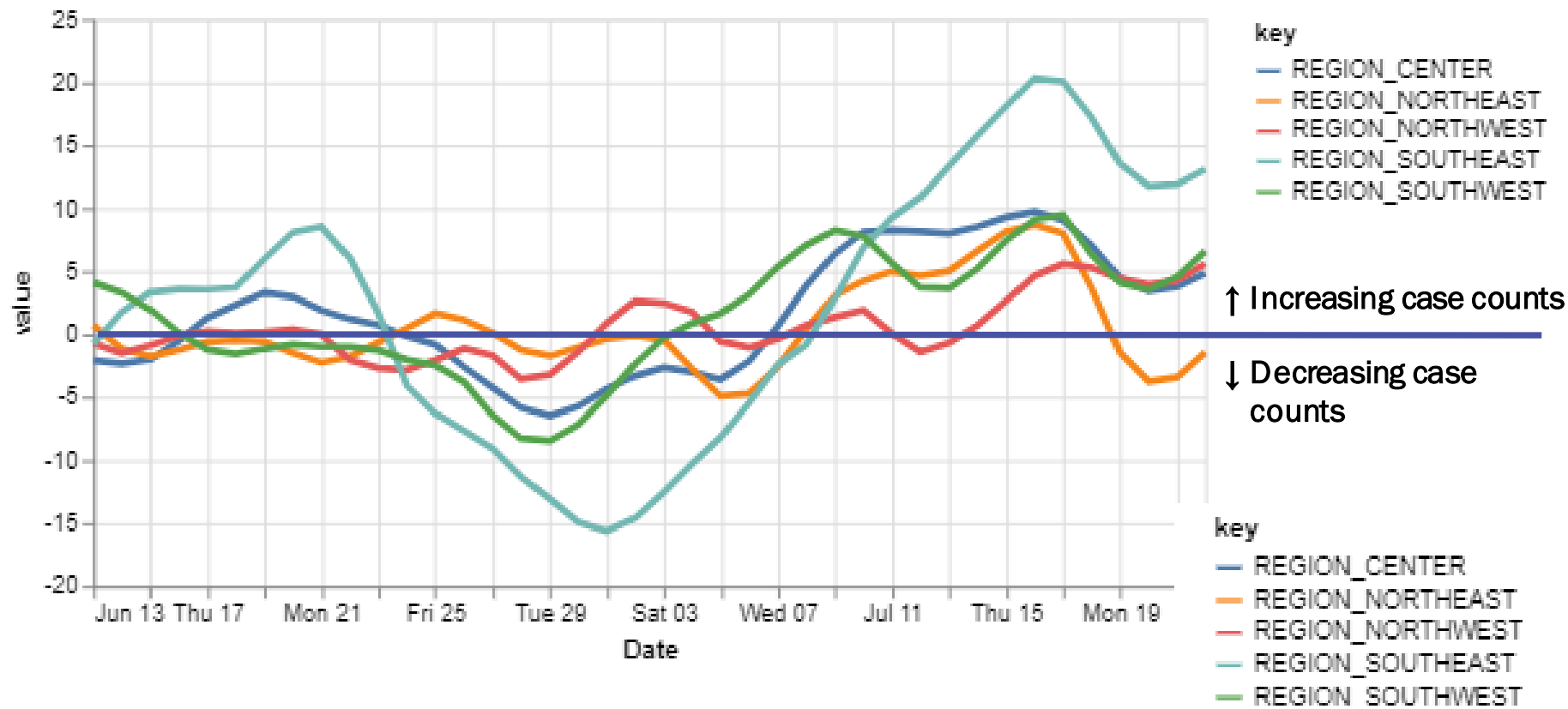


Region	R-effective	95% Confidence Interval
State	1.4	[0.9, 1.9]
Metro	1.3	[0.6, 2.2]
Northeast	1.1	[0.0, 2.8]
Northwest	1.3	[0.0, 3.2]
Southeast	1.6	[0.5, 2.7]
Southwest	1.4	[0.3, 2.7]

Courtesy of Presbyterian Healthcare Services— July 22, 2021.

All regions except the Northeast have relative growth rates greater than 0.

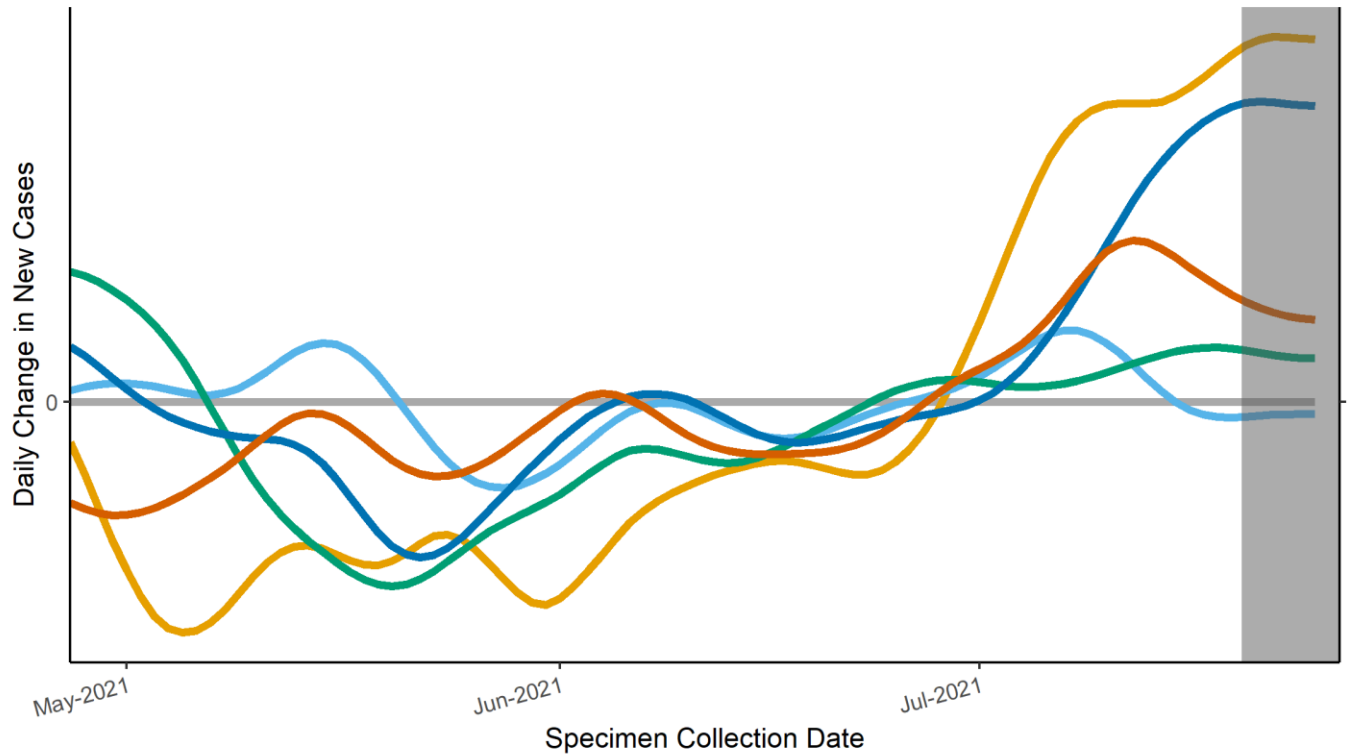
## 14-day relative growth rate (%), Regions



Courtesy of Presbyterian Healthcare Services— July 22, 2021.

# Epidemic Growth Acceleration

Daily Change in New COVID-19 Cases, by New Mexico Region, as of July 26, 2021



	Region	Growth Acceleration July 19, 2021
1	Metro	3.3
2	Northeast	-0.1
3	Northwest	0.5
4	Southeast	2.8
5	Southwest	1.0

Regions — Metro — Northeast — Northwest — Southeast — Southwest

\*Positive specimens collected in the last 7 or more days may not yet be reported to NMDOH. Case counts and growth acceleration during this time are underestimated.

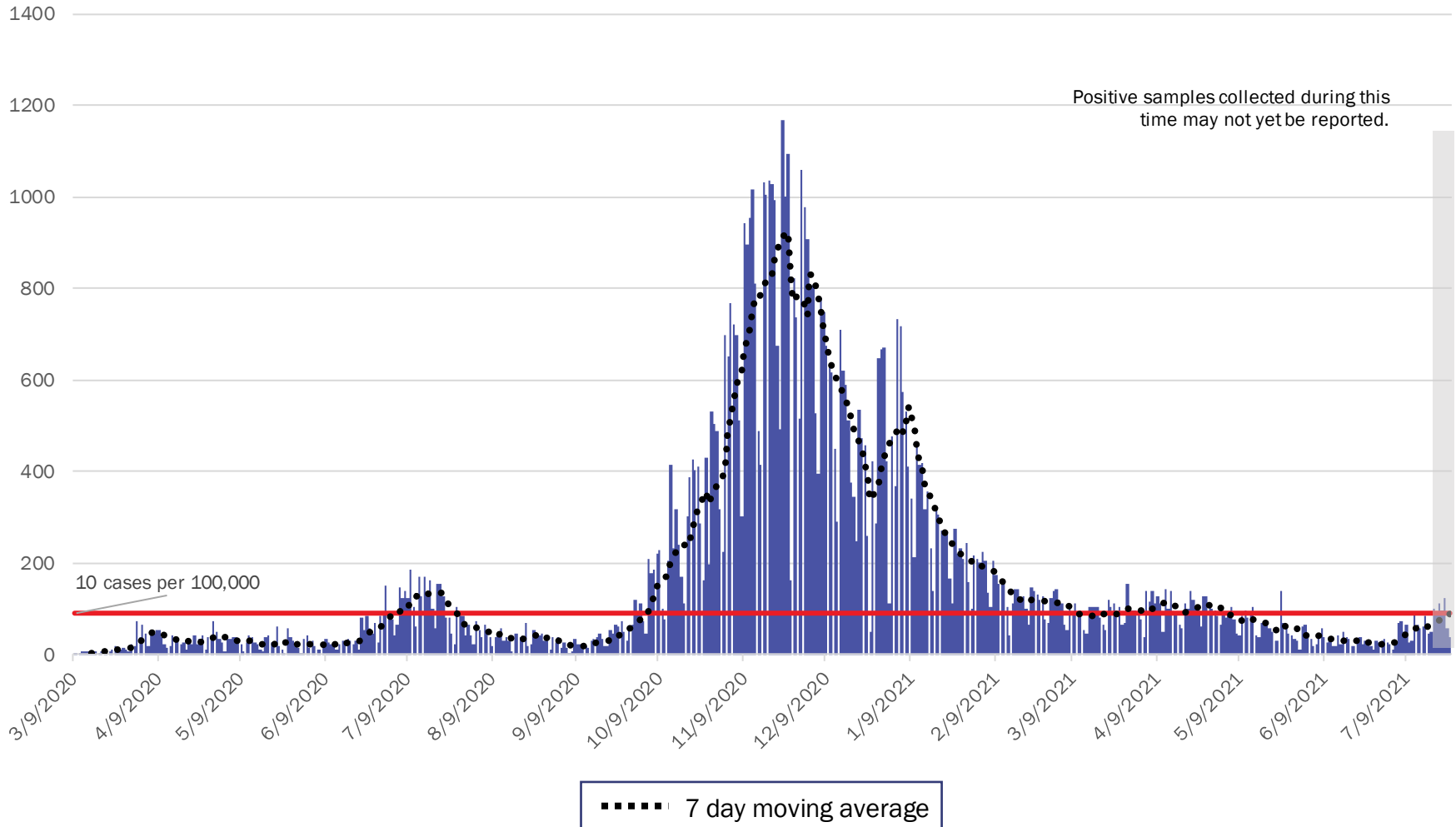
Source: Infectious Disease Epidemiology Bureau, Epidemiology and Response Division 7.26.2021, New Mexico Department of Health.



*Investing for tomorrow, delivering today.*



# Metro Region Case Count by Collection Date with 7 Day Moving Average July 26, 2021



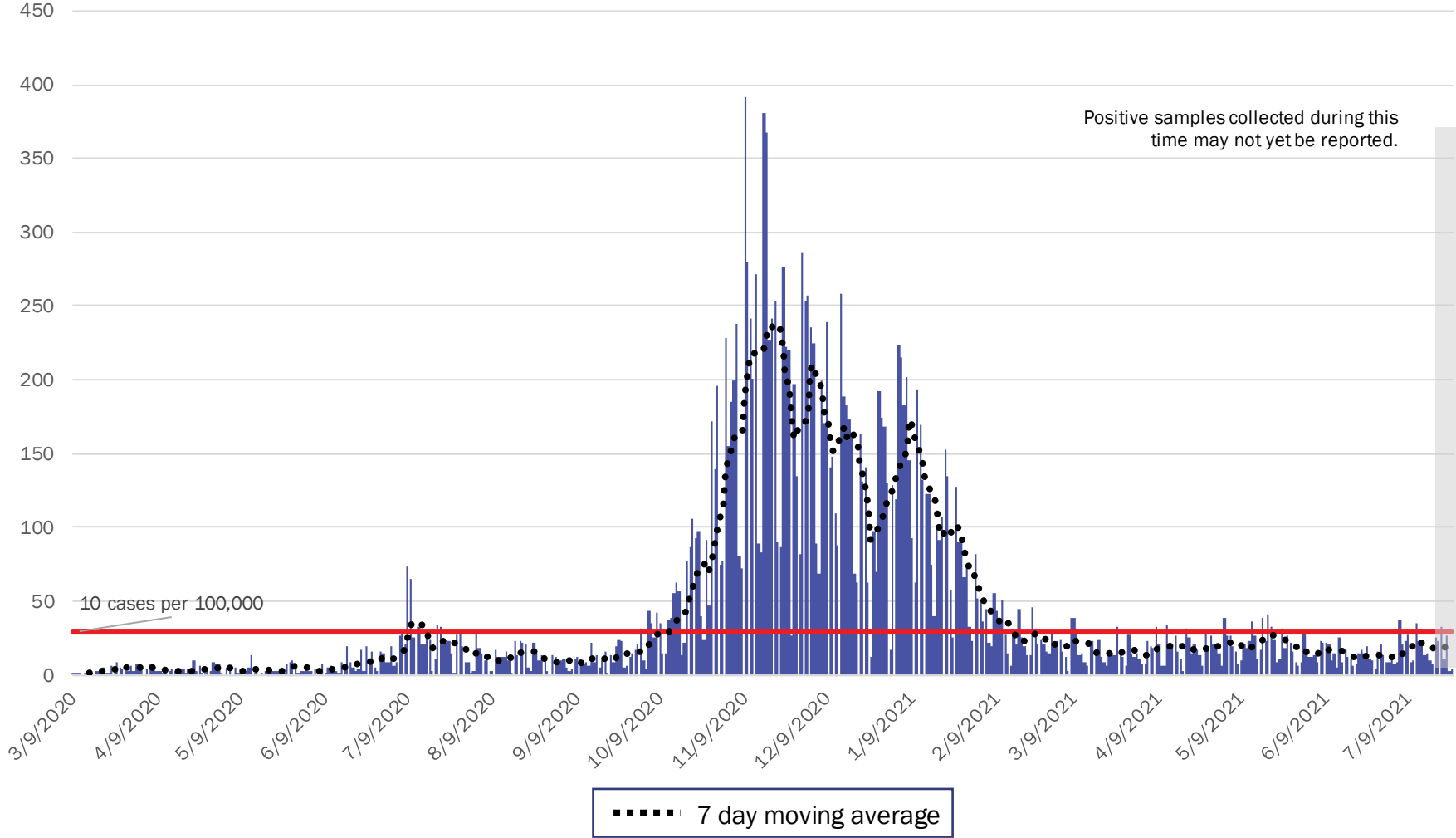
Source: Infectious Disease Epidemiology Bureau, Epidemiology and Response Division 7.26.2021, New Mexico Department of Health.



*Investing for tomorrow, delivering today.*

1190 S. St. Francis Drive • Santa Fe, NM 87505 • Phone: 505-827-2613 • Fax: 505-827-2530 • nmhealth.org

# Northeast Region Case Count by Collection Date with 7 Day Moving Average July 26, 2021



Source: Infectious Disease Epidemiology Bureau, Epidemiology and Response Division 7.26.2021, New Mexico Department of Health.

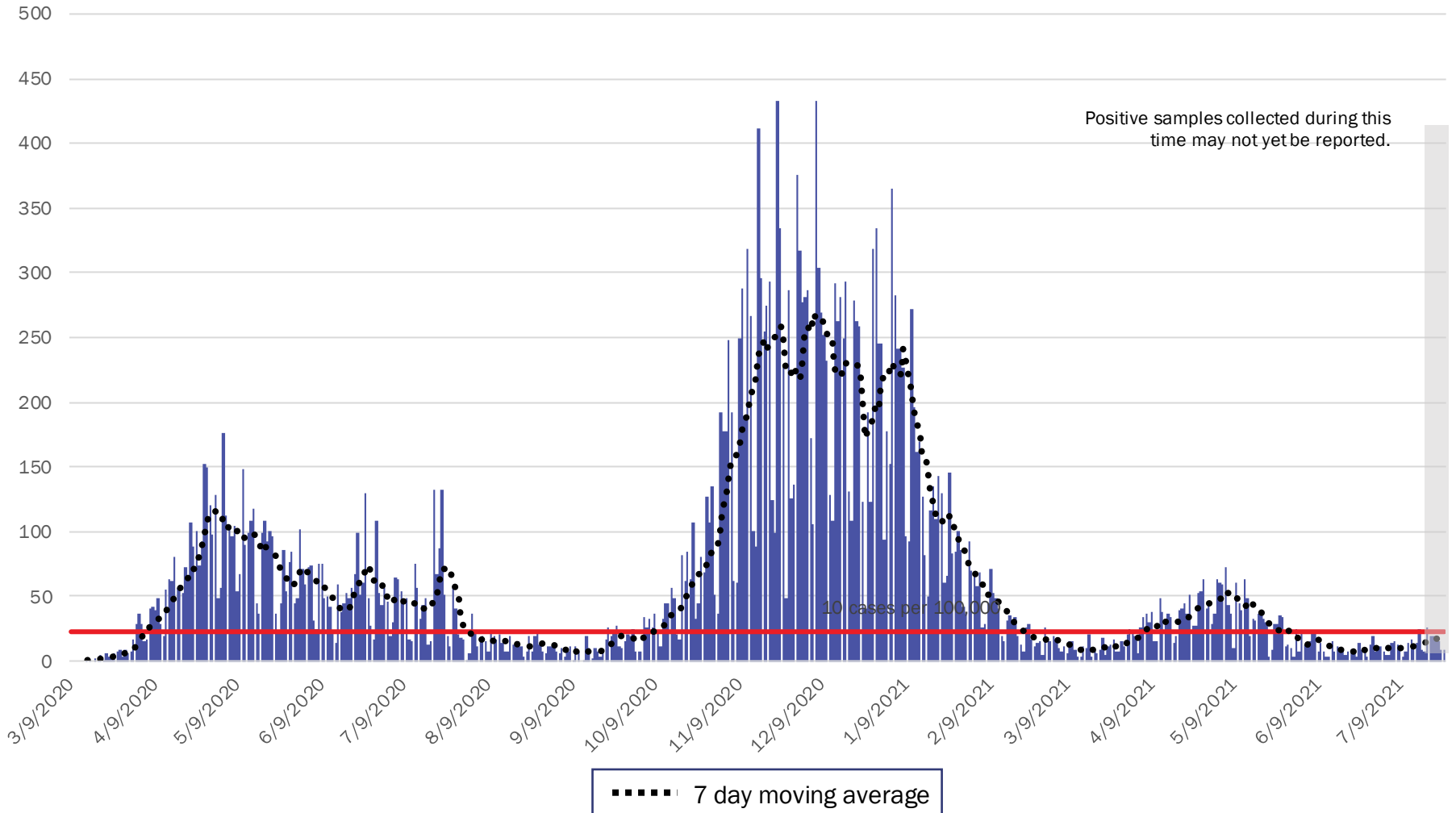


*Investing for tomorrow, delivering today.*



1190 S. St. Francis Drive • Santa Fe, NM 87505 • Phone: 505-827-2613 • Fax: 505-827-2530 • nmhealth.org

# Northwest Region Case Count by Collection Date with 7 Day Moving Average July 26, 2021



Source: Infectious Disease Epidemiology Bureau, Epidemiology and Response Division 7.26.2021, New Mexico Department of Health.

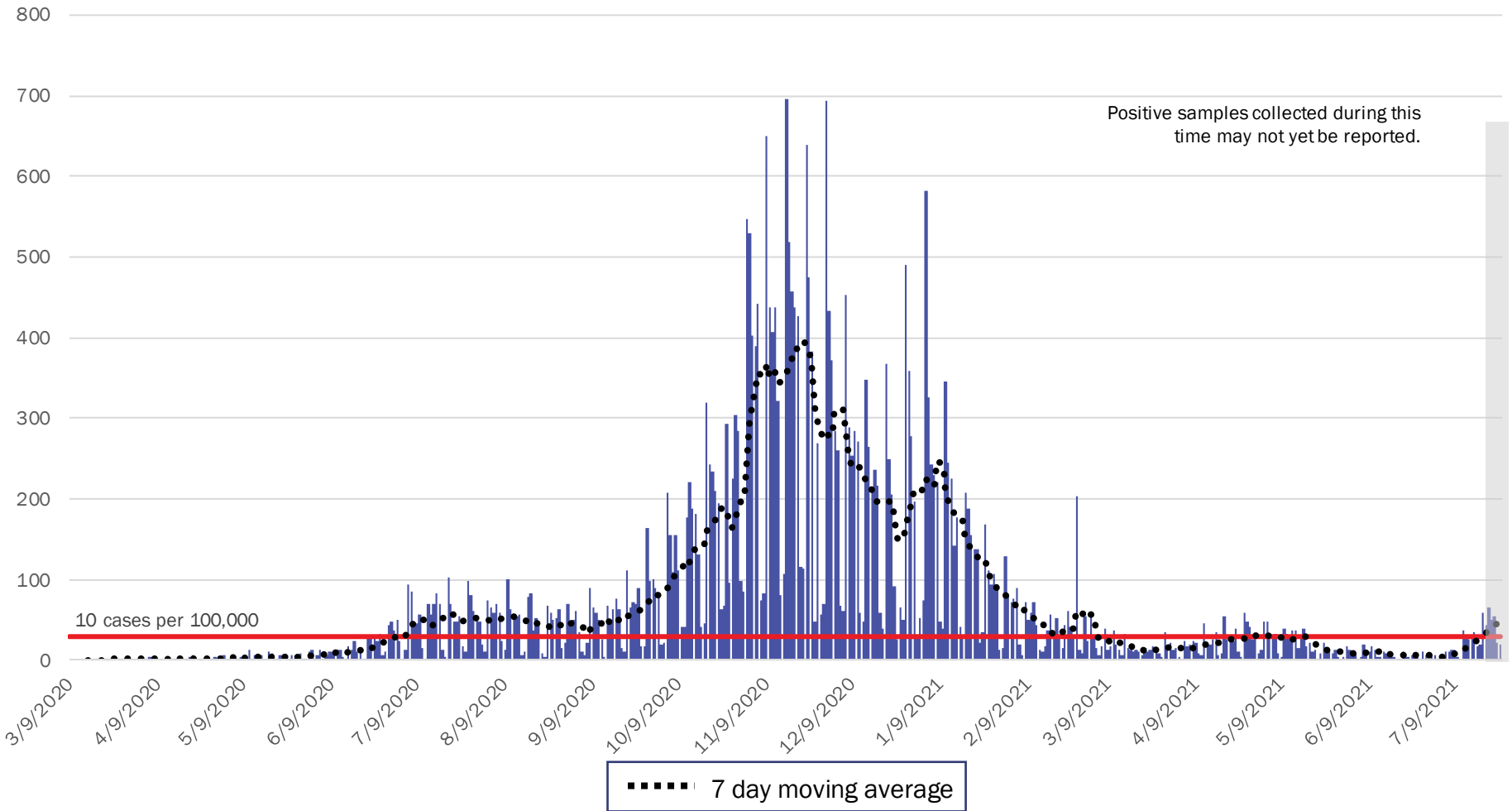


*Investing for tomorrow, delivering today.*



1190 S. St. Francis Drive • Santa Fe, NM 87505 • Phone: 505-827-2613 • Fax: 505-827-2530 • nmhealth.org

# Southeast Region Case Count by Collection Date with 7 Day Moving Average July 26, 2021



Source: Infectious Disease Epidemiology Bureau, Epidemiology and Response Division 7.26.2021, New Mexico Department of Health.

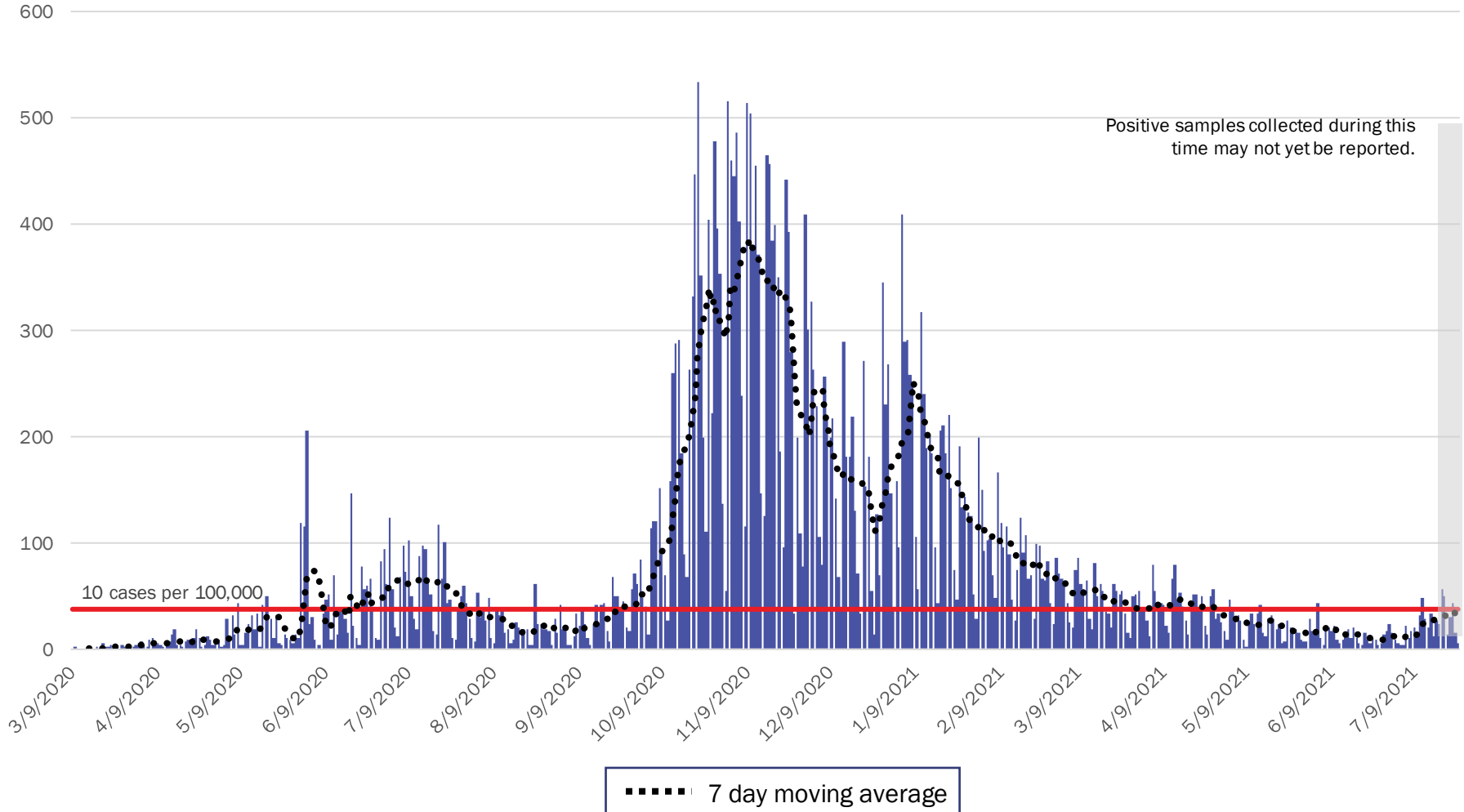


*Investing for tomorrow, delivering today.*



1190 S. St. Francis Drive • Santa Fe, NM 87505 • Phone: 505-827-2613 • Fax: 505-827-2530 • nmhealth.org

# Southwest Region Case Count by Collection Date with 7 Day Moving Average July 26, 2021



Source: Infectious Disease Epidemiology Bureau, Epidemiology and Response Division 7.26.2021, New Mexico Department of Health.



*Investing for tomorrow, delivering today.*



1190 S. St. Francis Drive • Santa Fe, NM 87505 • Phone: 505-827-2613 • Fax: 505-827-2530 • nmhealth.org

# New Mexico Status Updates

- Case count: Statewide, daily case counts may be increasing.
- Hospitalizations: COVID-19 hospitalizations remain at a plateau.
- Deaths: COVID-19 deaths remain at a plateau.

For more information, please visit the [Epidemiology Reports](https://cv.nmhealth.org/epidemiology-reports/) page on the NMDOH COVID-19 website: <https://cv.nmhealth.org/epidemiology-reports/>