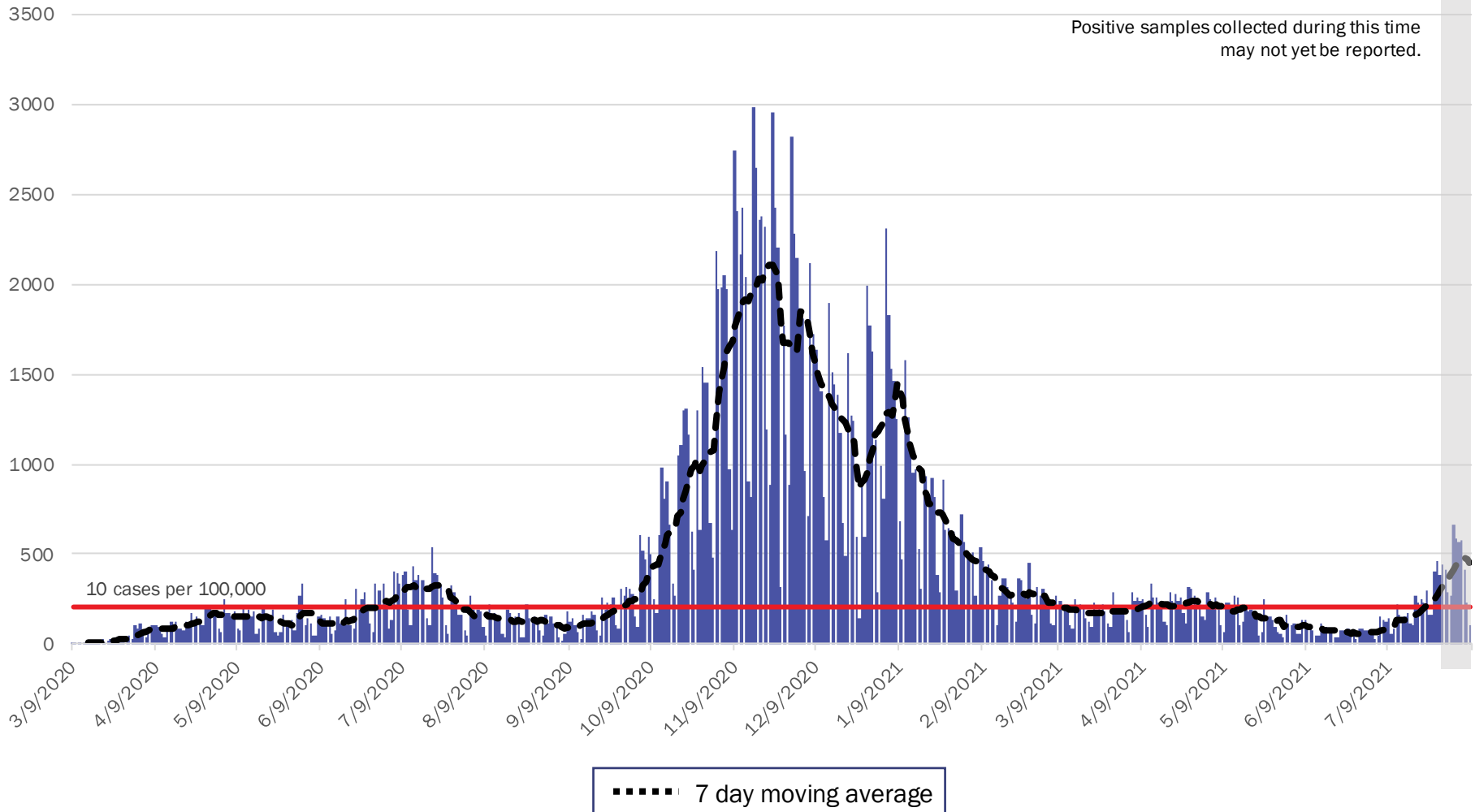


# COVID-19 in New Mexico: Epidemiologic and Modeling Update

August 9, 2021

# New Mexico COVID-19 Cases by Date of Specimen Collection August 9, 2021



Source: Infectious Disease Epidemiology Bureau, Epidemiology and Response Division 8.9.2021, New Mexico Department of Health.



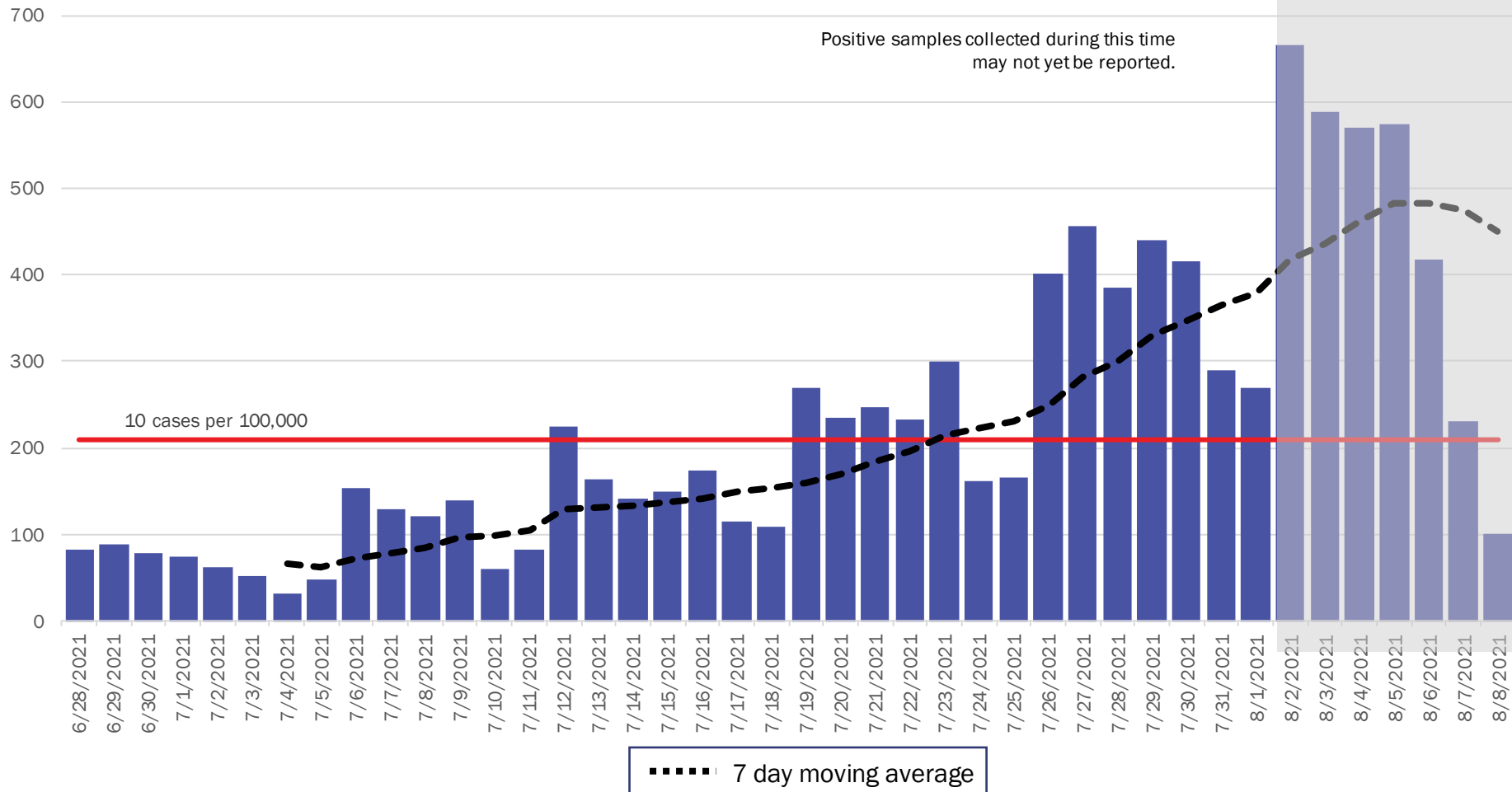
*Investing for tomorrow, delivering today.*

1190 S. St. Francis Drive • Santa Fe, NM 87505 • Phone: 505-827-2613 • Fax: 505-827-2530 • nmhealth.org

# New Mexico COVID-19 Cases by Date of Specimen Collection

## Recent 6 Week View

### August 9, 2021



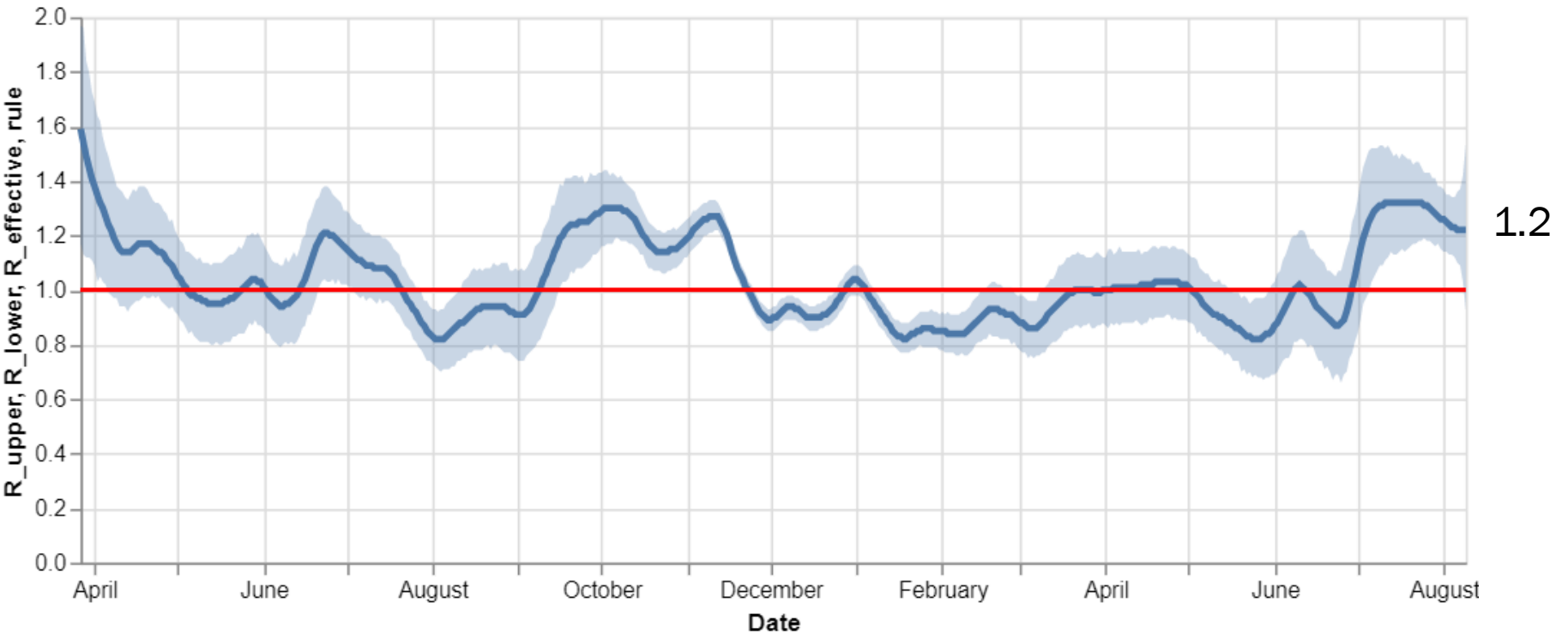
Source: Infectious Disease Epidemiology Bureau, Epidemiology and Response Division 8.9.2021, New Mexico Department of Health.



*Investing for tomorrow, delivering today.*

1190 S. St. Francis Drive • Santa Fe, NM 87505 • Phone: 505-827-2613 • Fax: 505-827-2530 • nmhealth.org

# Statewide R-effective has decreased to 1.2



Courtesy of Presbyterian Healthcare Services— August 9, 2021.

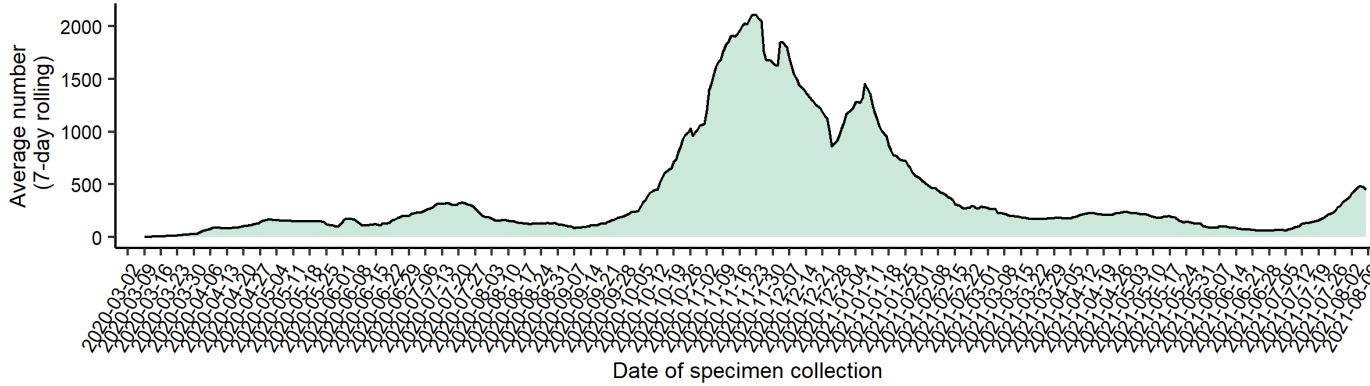


*Investing for tomorrow, delivering today.*

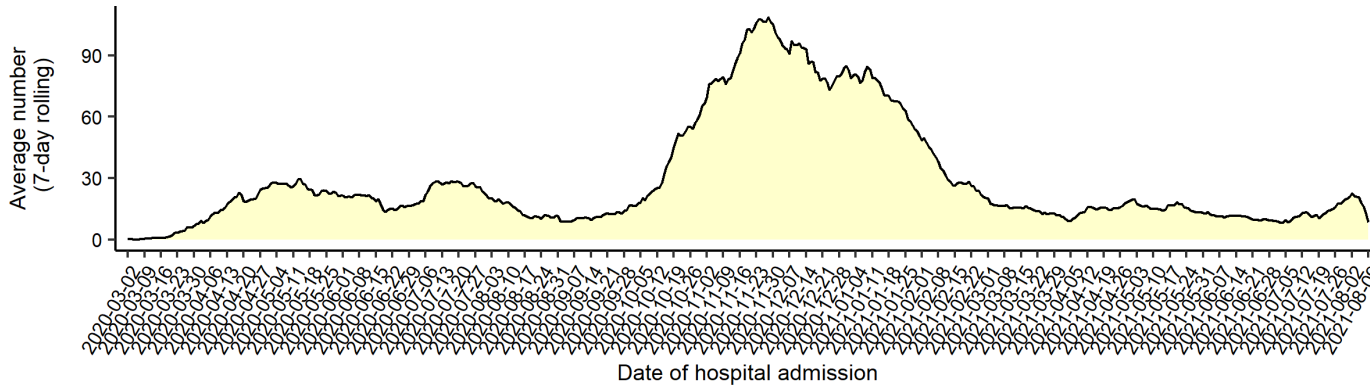
1190 S. St. Francis Drive • Santa Fe, NM 87505 • Phone: 505-827-2613 • Fax: 505-827-2530 • nmhealth.org

# Average number (7-day rolling average) of cases, hospitalizations, and deaths over time

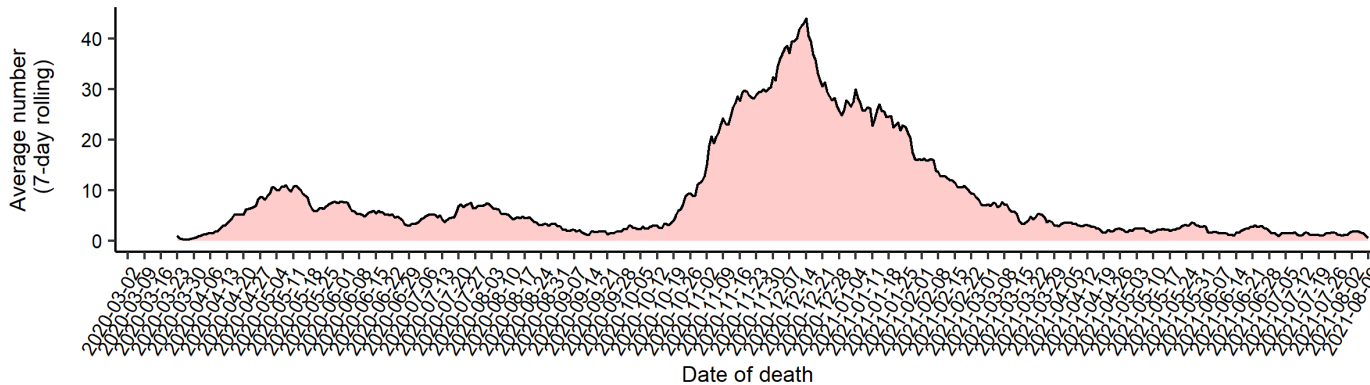
## Cases



## Hospitalizations



## Deaths



*Note: Cases, hospitalizations, and deaths may not yet be reported in 7 or more days.*

*As of 8/9/21*



**Key**

Low Level Endemic  
<1.0

Approaching Low Level Endemic  
1.0

Requiring further mitigation >1.0

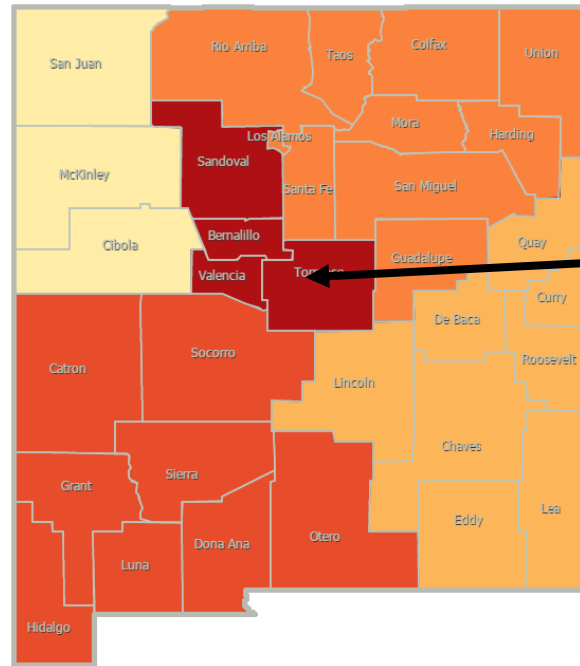
**Northwest**  
**R\_effective 1.3 ↑**

**Northeast**  
**R\_effective 1.3 ↑**

**Metro**  
**R\_effective 1.2 ↑**

**Southwest**  
**R\_effective 1.2 ↑**

**Southeast**  
**R\_effective 1.3 ↑**



As of July 22, 2021

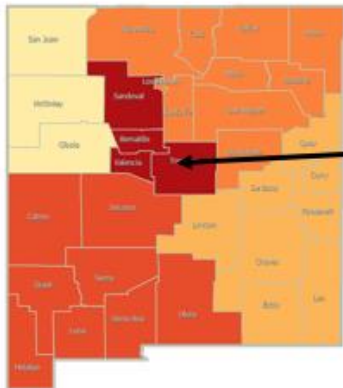
**Northwest**  
**R\_effective 1.3 ↑**

**Northeast**  
**R\_effective 1.1 ↑**

**Metro**  
**R\_effective 1.3 ↑**

**Southwest**  
**R\_effective 1.4 ↑**

**Southeast**  
**R\_effective 1.6 ↑**



Region	R-effective	95% Confidence Interval
State	1.2	[0.9, 1.5]
Metro	1.2	[0.7, 1.7]
Northeast	1.3	[0.3, 2.4]
Northwest	1.3	[0.5, 2.2]
Southeast	1.3	[0.7, 1.9]
Southwest	1.2	[0.5, 2.1]

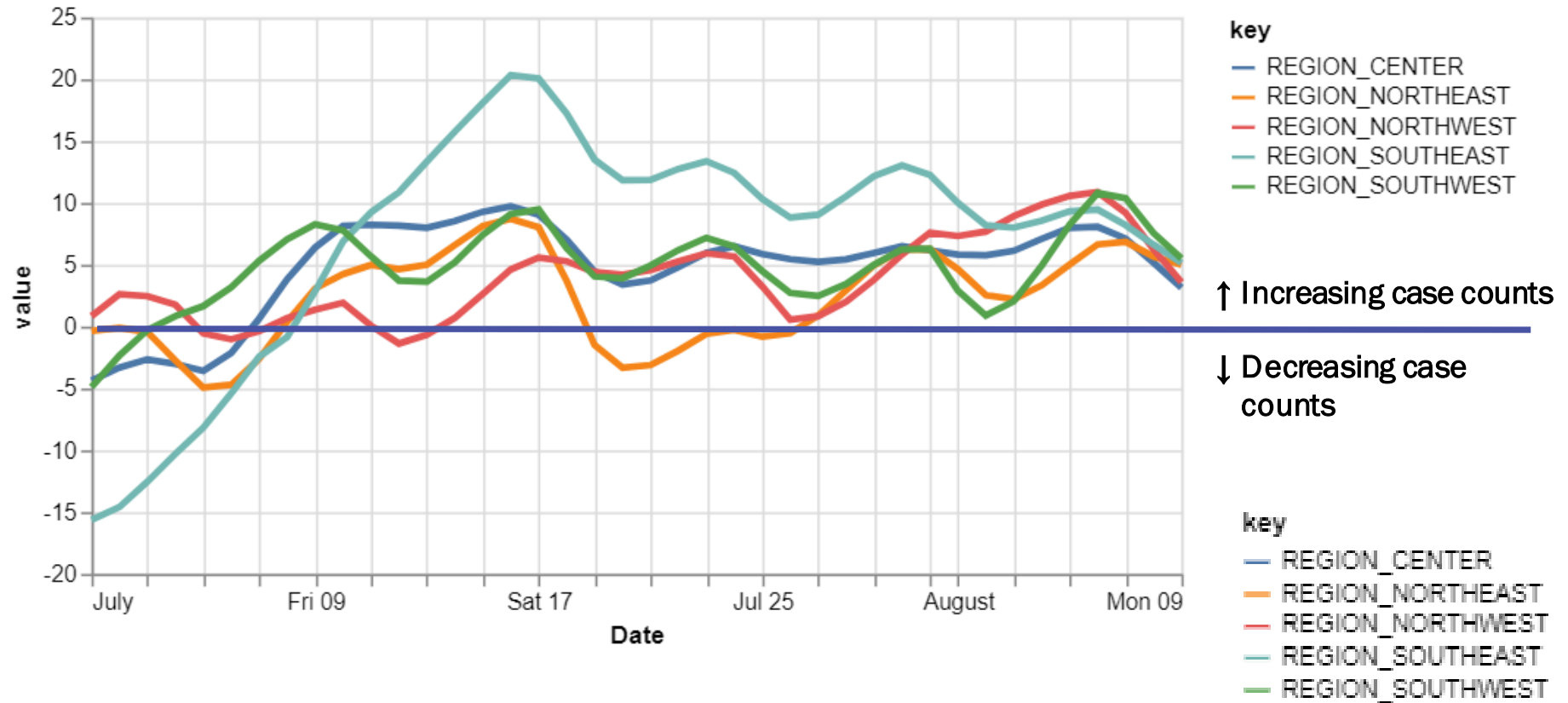
Courtesy of Presbyterian Healthcare Services— August 9, 2021.



*Investing for tomorrow, delivering today.*

# All regions have relative growth rates greater than 0.

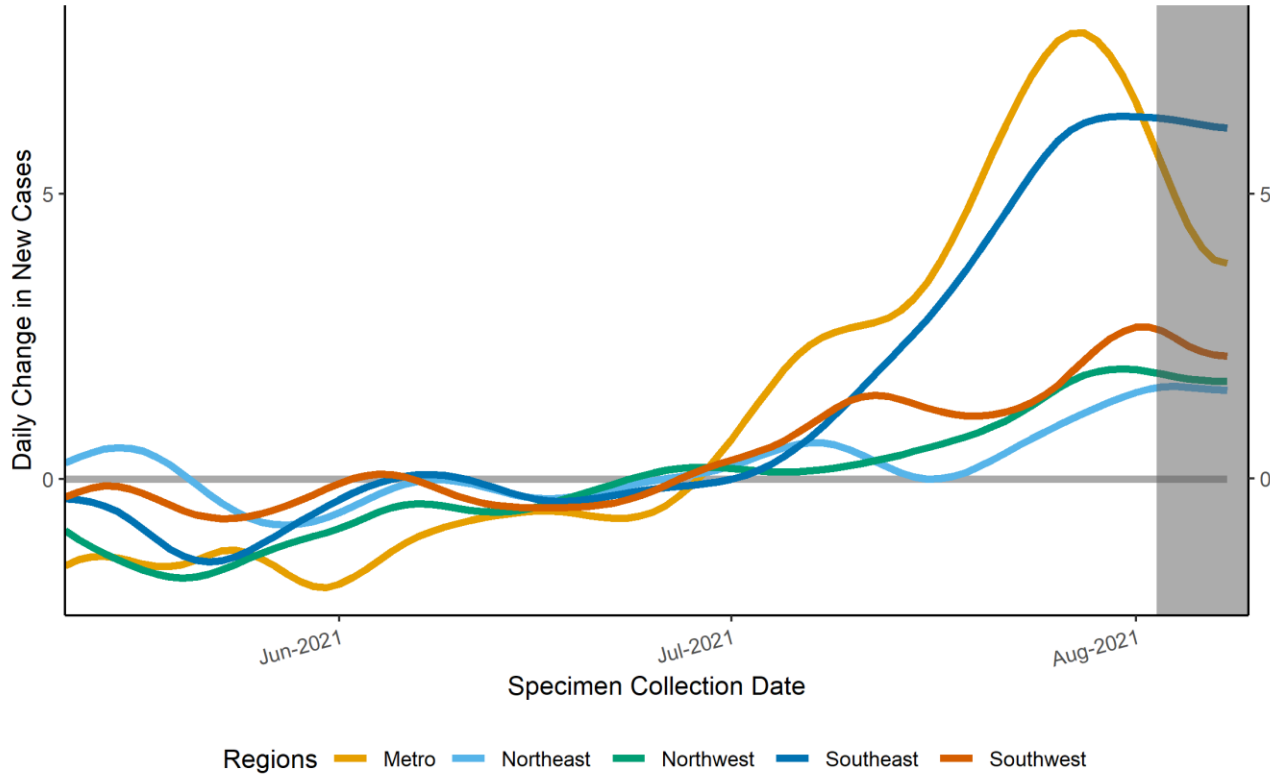
## 14-day relative growth rate (%), Regions



Courtesy of Presbyterian Healthcare Services— August 9, 2021.

# Epidemic Growth Acceleration

Daily Change in New COVID-19 Cases, by New Mexico Region, as of August 09, 2021



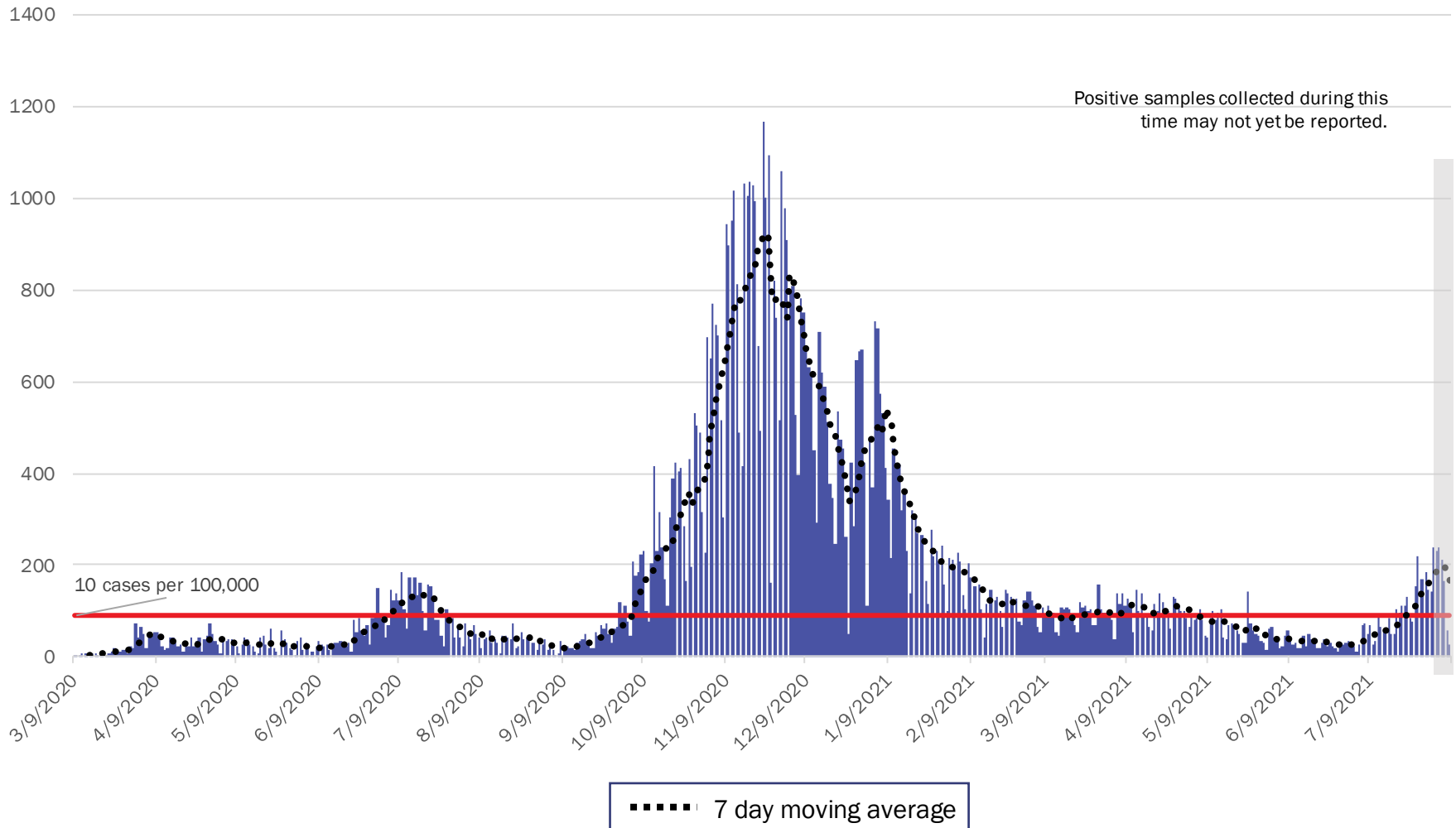
	Region	Growth Acceleration August 02, 2021
1	Metro	6.1
2	Northeast	1.6
3	Northwest	1.9
4	Southeast	6.3
5	Southwest	2.7

\*Positive specimens collected in the last 7 or more days may not yet be reported to NMDOH. Case counts and growth acceleration during this time are underestimated.

Source: Infectious Disease Epidemiology Bureau, Epidemiology and Response Division 8.9.2021, New Mexico Department of Health.



# Metro Region Case Count by Collection Date with 7 Day Moving Average August 9, 2021



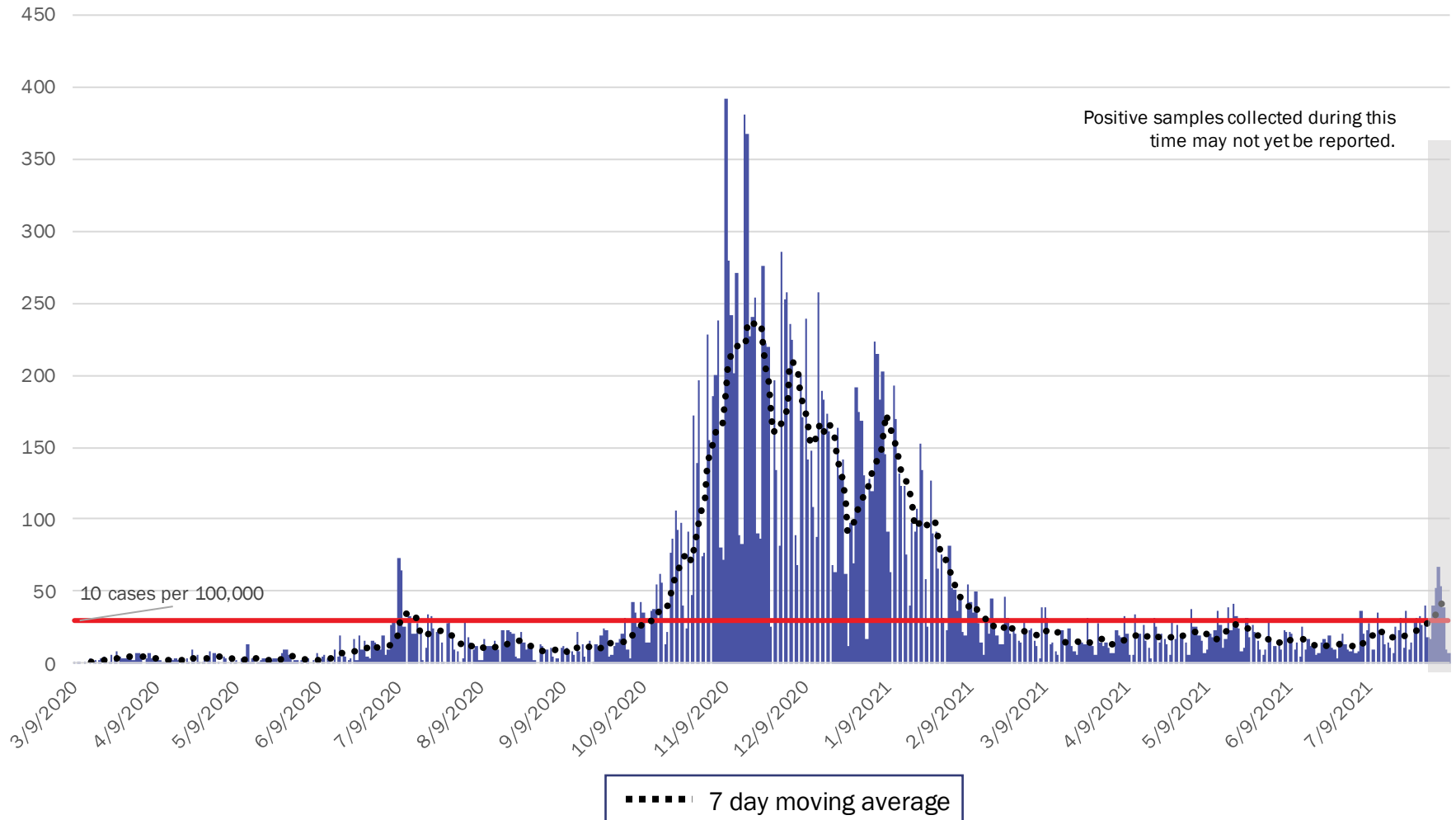
Source: Infectious Disease Epidemiology Bureau, Epidemiology and Response Division 8.9.2021, New Mexico Department of Health.



*Investing for tomorrow, delivering today.*

1190 S. St. Francis Drive • Santa Fe, NM 87505 • Phone: 505-827-2613 • Fax: 505-827-2530 • nmhealth.org

# Northeast Region Case Count by Collection Date with 7 Day Moving Average August 9, 2021



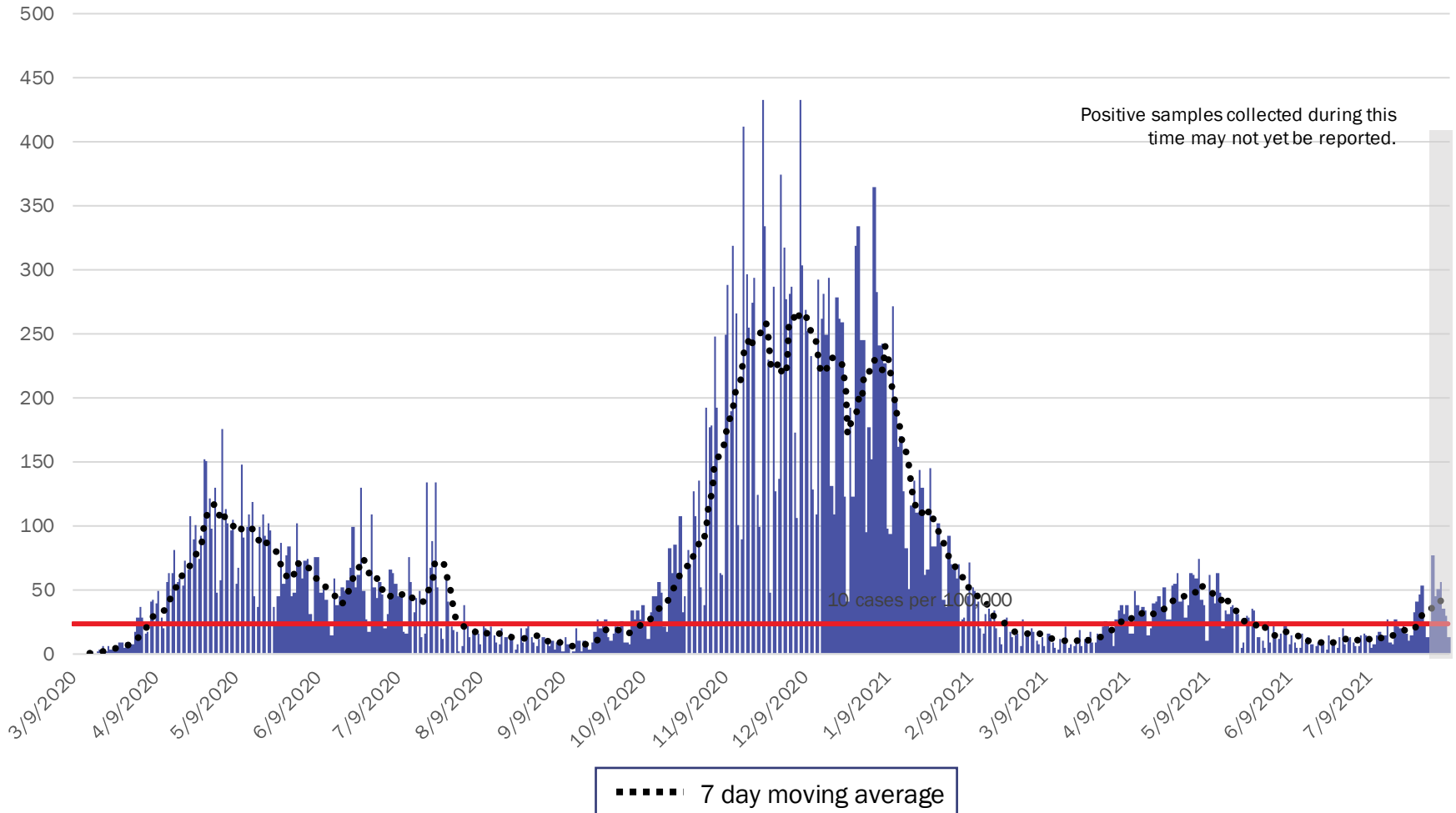
Source: Infectious Disease Epidemiology Bureau, Epidemiology and Response Division 8.9.2021, New Mexico Department of Health.



*Investing for tomorrow, delivering today.*

1190 S. St. Francis Drive • Santa Fe, NM 87505 • Phone: 505-827-2613 • Fax: 505-827-2530 • nmhealth.org

# Northwest Region Case Count by Collection Date with 7 Day Moving Average August 9, 2021



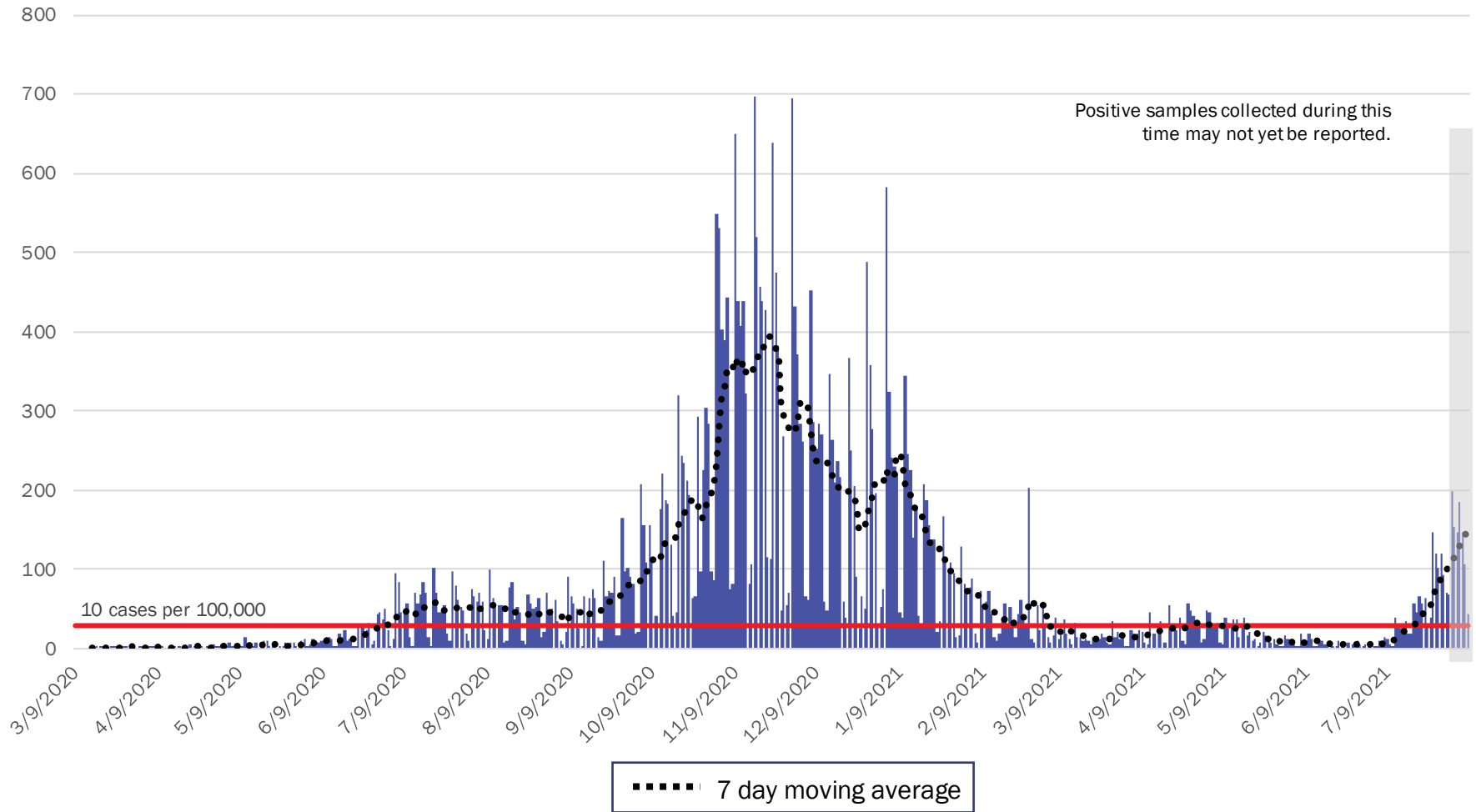
Source: Infectious Disease Epidemiology Bureau, Epidemiology and Response Division 8.9.2021, New Mexico Department of Health.



*Investing for tomorrow, delivering today.*

1190 S. St. Francis Drive • Santa Fe, NM 87505 • Phone: 505-827-2613 • Fax: 505-827-2530 • nmhealth.org

# Southeast Region Case Count by Collection Date with 7 Day Moving Average August 9, 2021



Source: Infectious Disease Epidemiology Bureau, Epidemiology and Response Division 8.9.2021, New Mexico Department of Health.

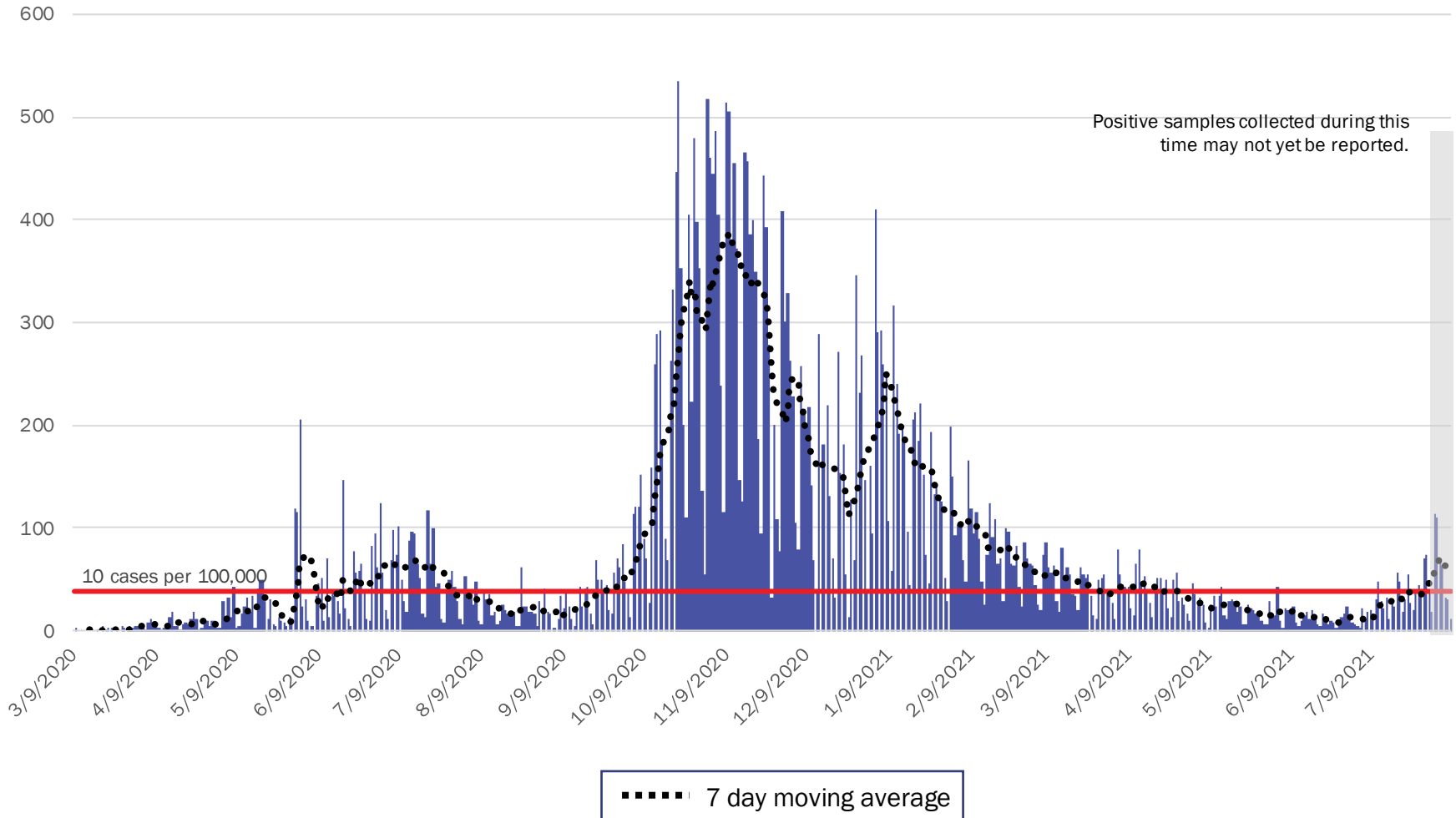


*Investing for tomorrow, delivering today.*



1190 S. St. Francis Drive • Santa Fe, NM 87505 • Phone: 505-827-2613 • Fax: 505-827-2530 • nmhealth.org

# Southwest Region Case Count by Collection Date with 7 Day Moving Average August 9, 2021



Source: Infectious Disease Epidemiology Bureau, Epidemiology and Response Division 8.9.2021, New Mexico Department of Health.



*Investing for tomorrow, delivering today.*



# New Mexico Status Updates

- Case count: Statewide, daily case counts are increasing.
- Hospitalizations: COVID-19 hospitalizations are increasing.
- Deaths: COVID-19 deaths remain at a plateau.

For more information, please visit the [Epidemiology Reports](https://cv.nmhealth.org/epidemiology-reports/) page on the NMDOH COVID-19 website: <https://cv.nmhealth.org/epidemiology-reports/>