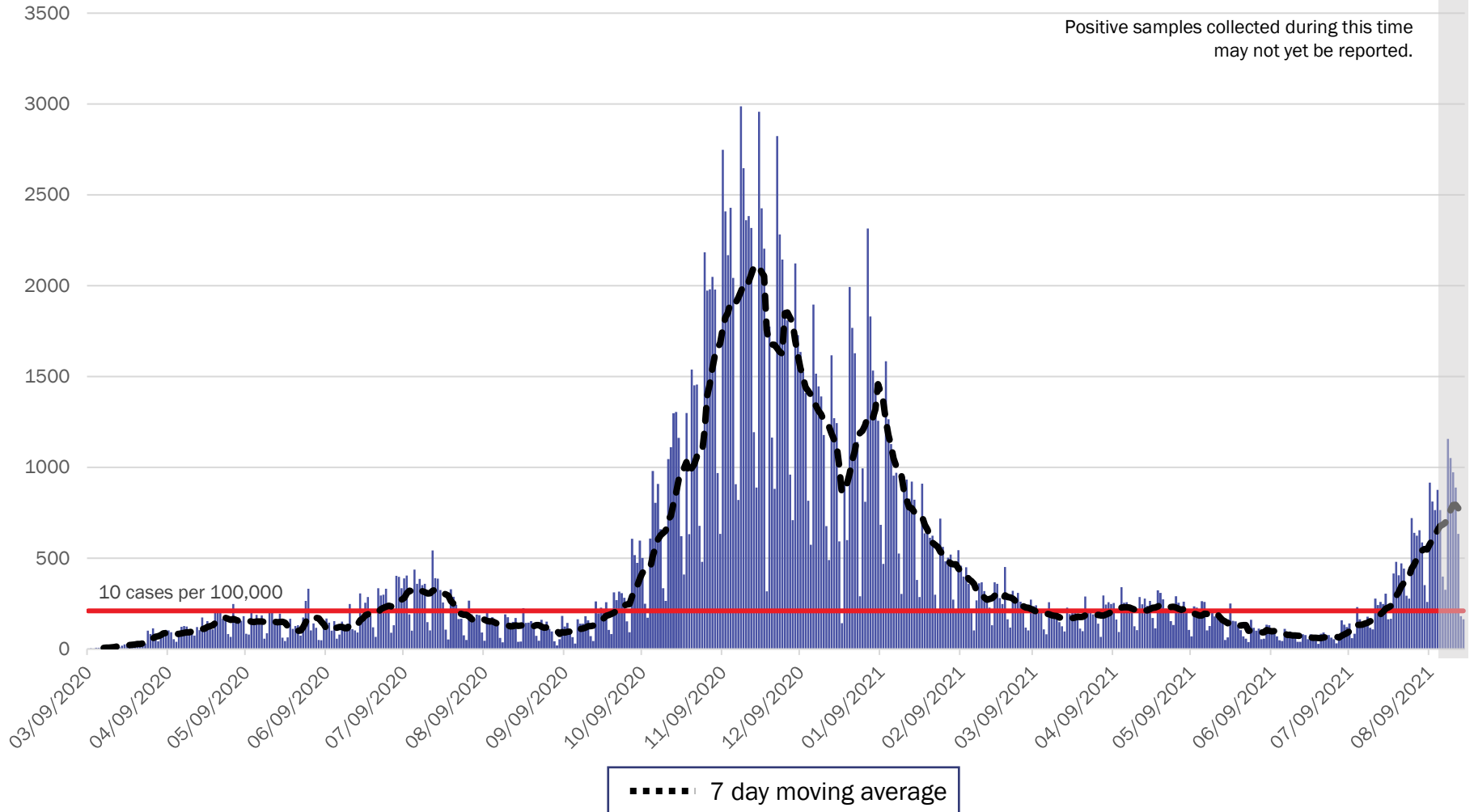


COVID-19 in New Mexico: Epidemiologic and Modeling Update

August 23, 2021

New Mexico COVID-19 Cases by Date of Specimen Collection August 23, 2021



Source: Infectious Disease Epidemiology Bureau, Epidemiology and Response Division 8.23.2021, New Mexico Department of Health.



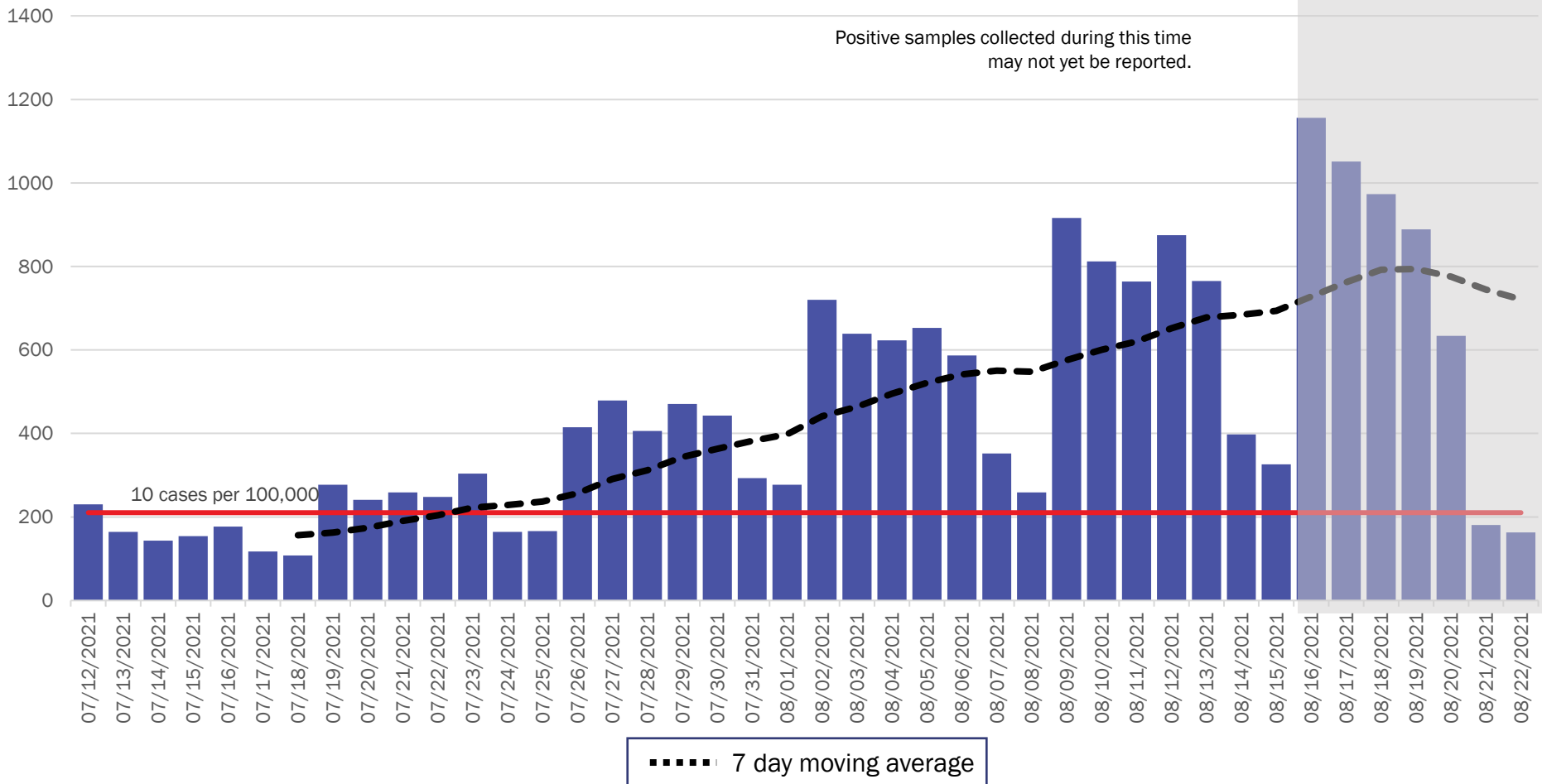
Investing for tomorrow, delivering today.

1190 S. St. Francis Drive • Santa Fe, NM 87505 • Phone: 505-827-2613 • Fax: 505-827-2530 • nmhealth.org

New Mexico COVID-19 Cases by Date of Specimen Collection

Recent 6 Week View

August 23, 2021



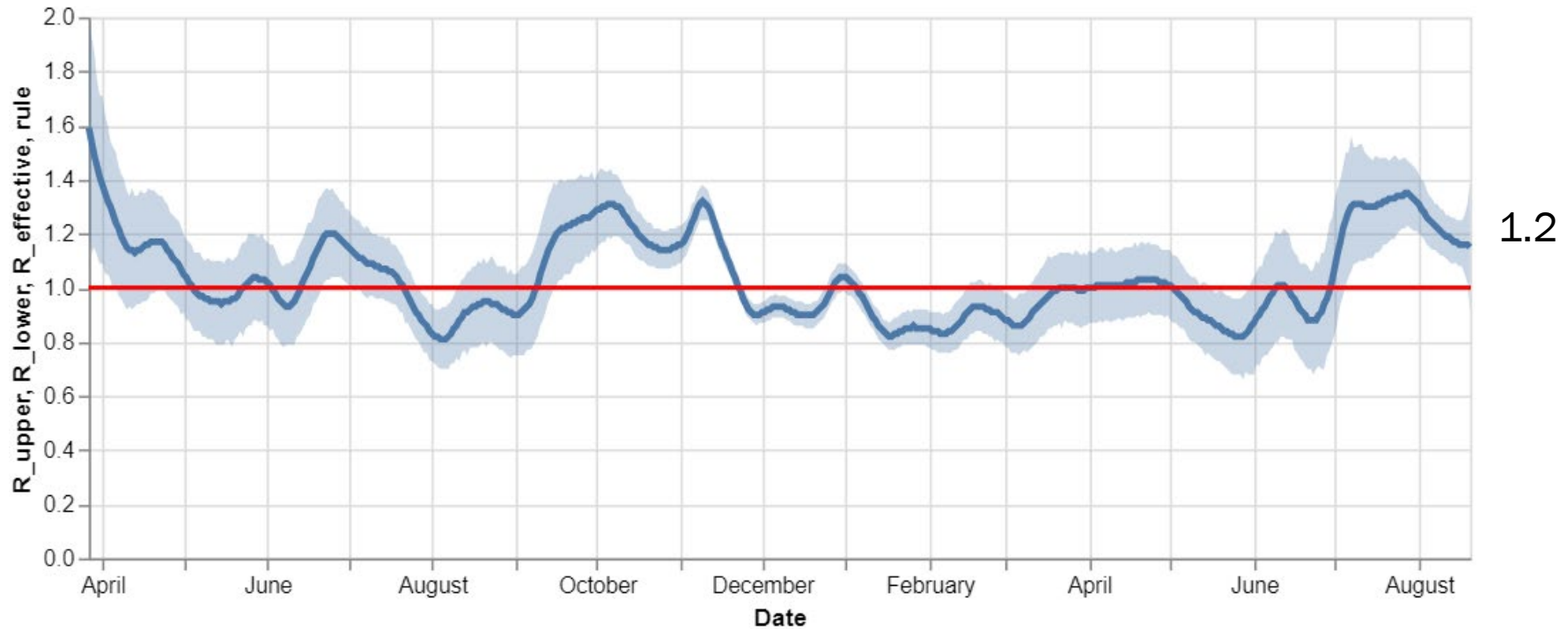
Source: Infectious Disease Epidemiology Bureau, Epidemiology and Response Division 8.23.2021, New Mexico Department of Health.



Investing for tomorrow, delivering today.

1190 S. St. Francis Drive • Santa Fe, NM 87505 • Phone: 505-827-2613 • Fax: 505-827-2530 • nmhealth.org

Statewide R-effective has remained at 1.2



1.2

Courtesy of Presbyterian Healthcare Services – August 20, 2021.



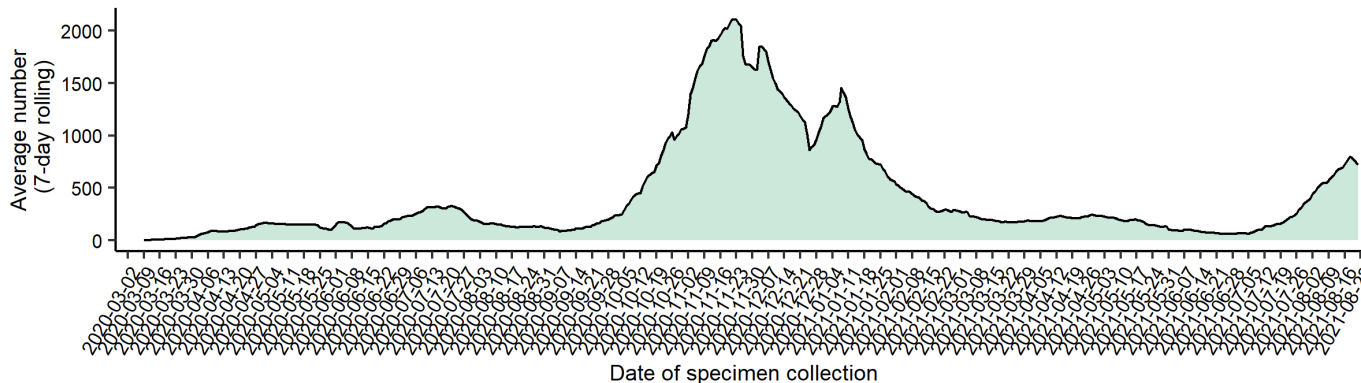
Investing for tomorrow, delivering today.



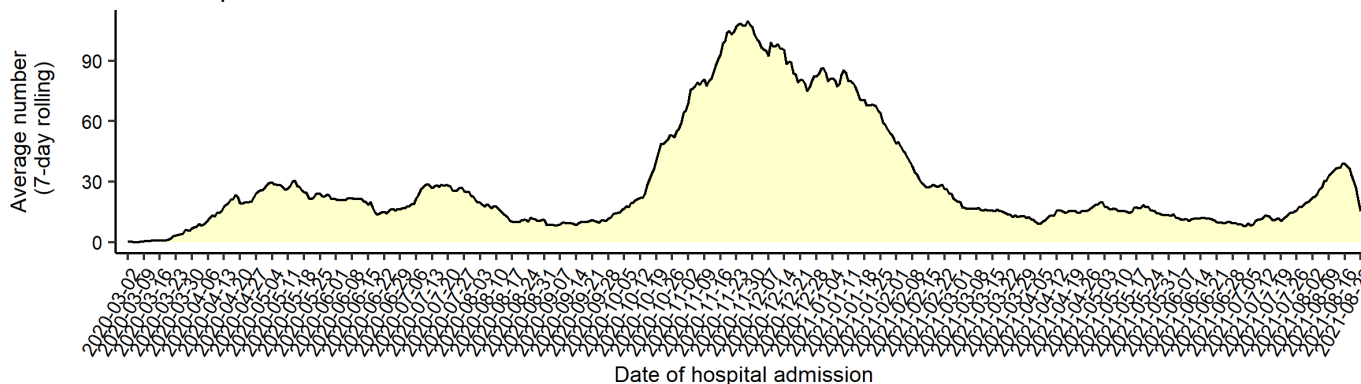
1190 S. St. Francis Drive • Santa Fe, NM 87505 • Phone: 505-827-2613 • Fax: 505-827-2530 • nmhealth.org

Average number (7-day rolling average) of cases, hospitalizations, and deaths over time

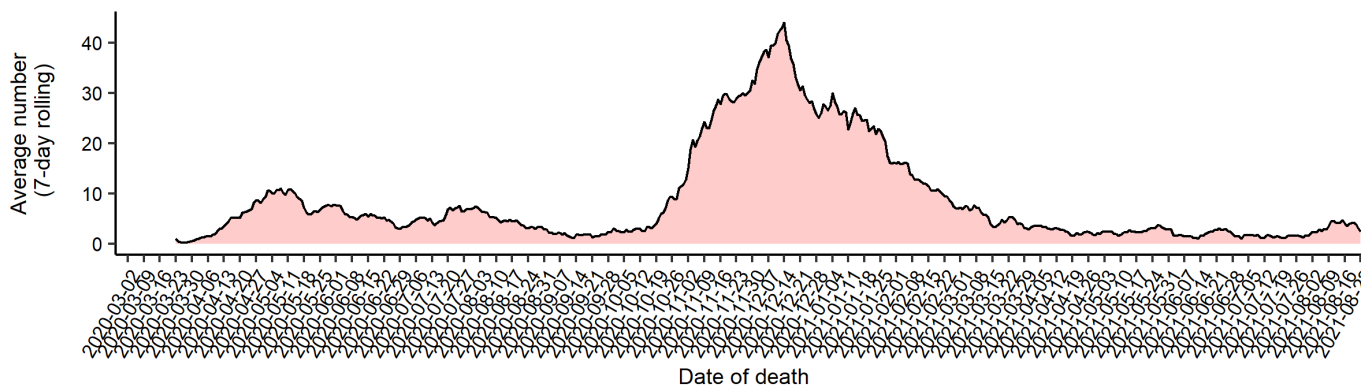
Cases



Hospitalizations



Deaths



Note: Cases, hospitalizations, and deaths may not yet be reported in 7 or more days.

As of 8/23/21



Key

- Low Level Endemic <1.0
- Approaching Low Level Endemic 1.0
- Requiring further mitigation >1.0

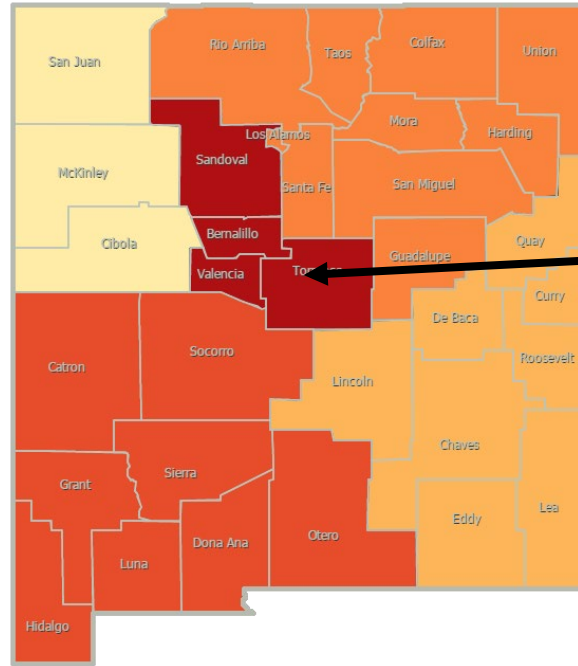
Northwest
R_effective 1.1 ↑

Northeast
R_effective 1.3 ↑

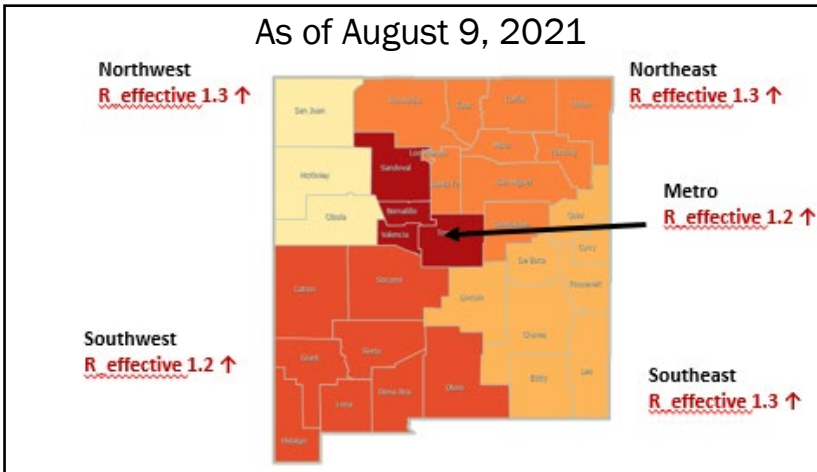
Metro
R_effective 1.1 ↑

Southwest
R_effective 1.1 ↑

Southeast
R_effective 1.2 ↑



As of August 9, 2021

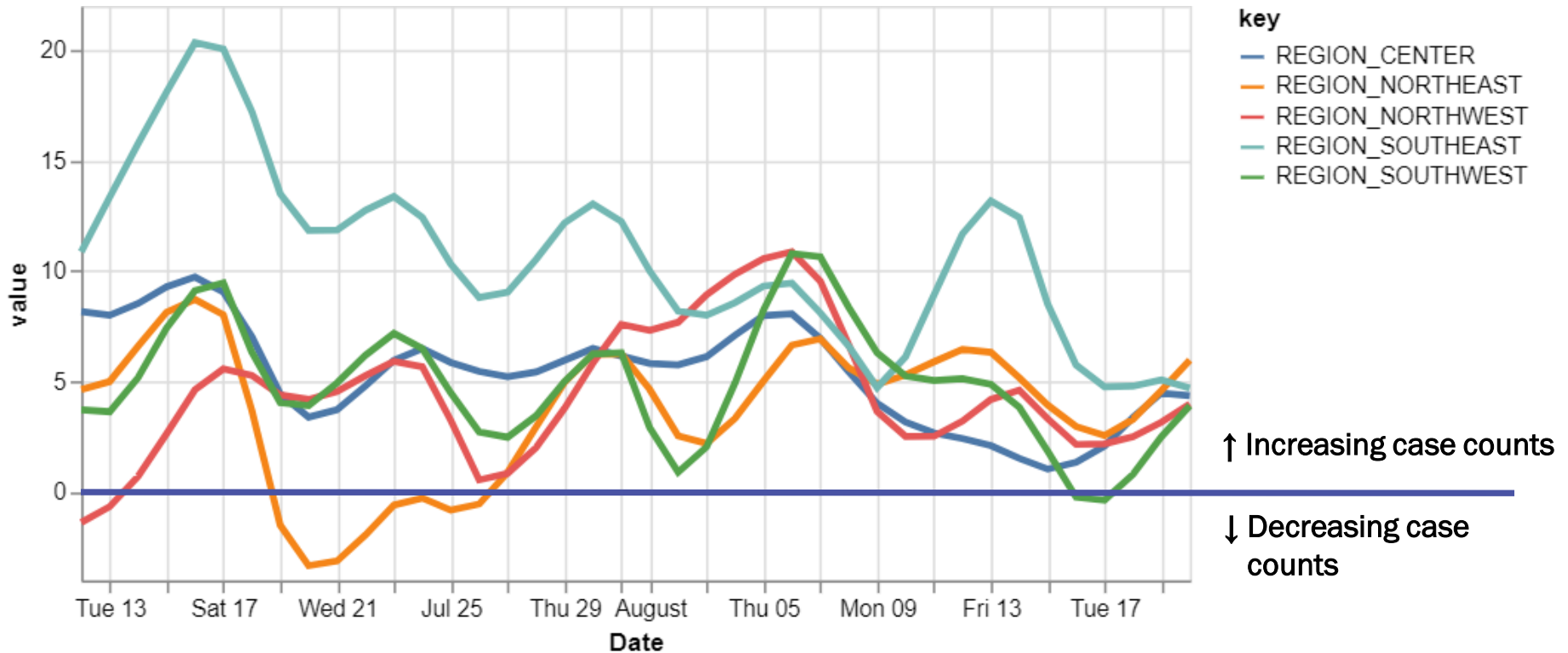


Region	R-effective	95% Confidence Interval
State	1.2	[0.9, 1.4]
Metro	1.1	[0.7, 1.5]
Northeast	1.3	[0.5, 2.0]
Northwest	1.1	[0.4, 2.0]
Southeast	1.2	[0.8, 1.6]
Southwest	1.1	[0.5, 1.8]

Courtesy of Presbyterian Healthcare Services – August 20, 2021.

All regions have relative growth rates greater than 0.

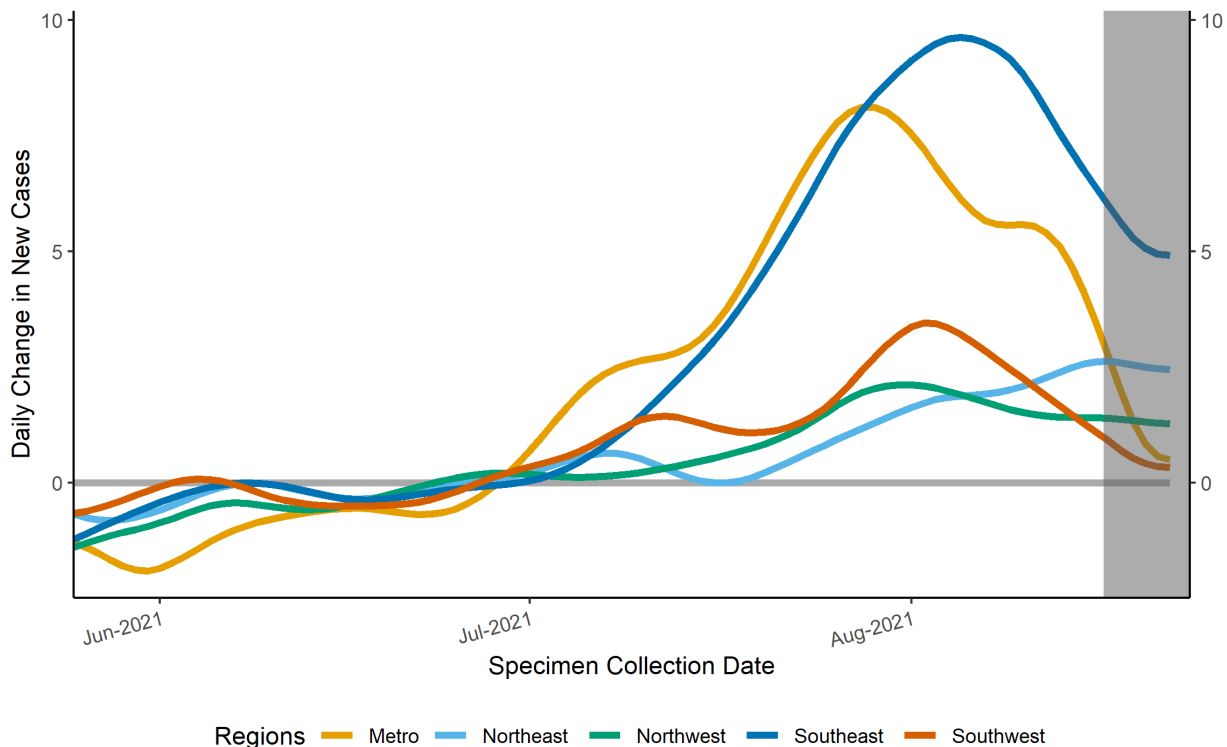
14-day relative growth rate (%), Regions



Courtesy of Presbyterian Healthcare Services – August 20, 2021.

Epidemic Growth Acceleration

Daily Change in New COVID-19 Cases, by New Mexico Region, as of August 23, 2021



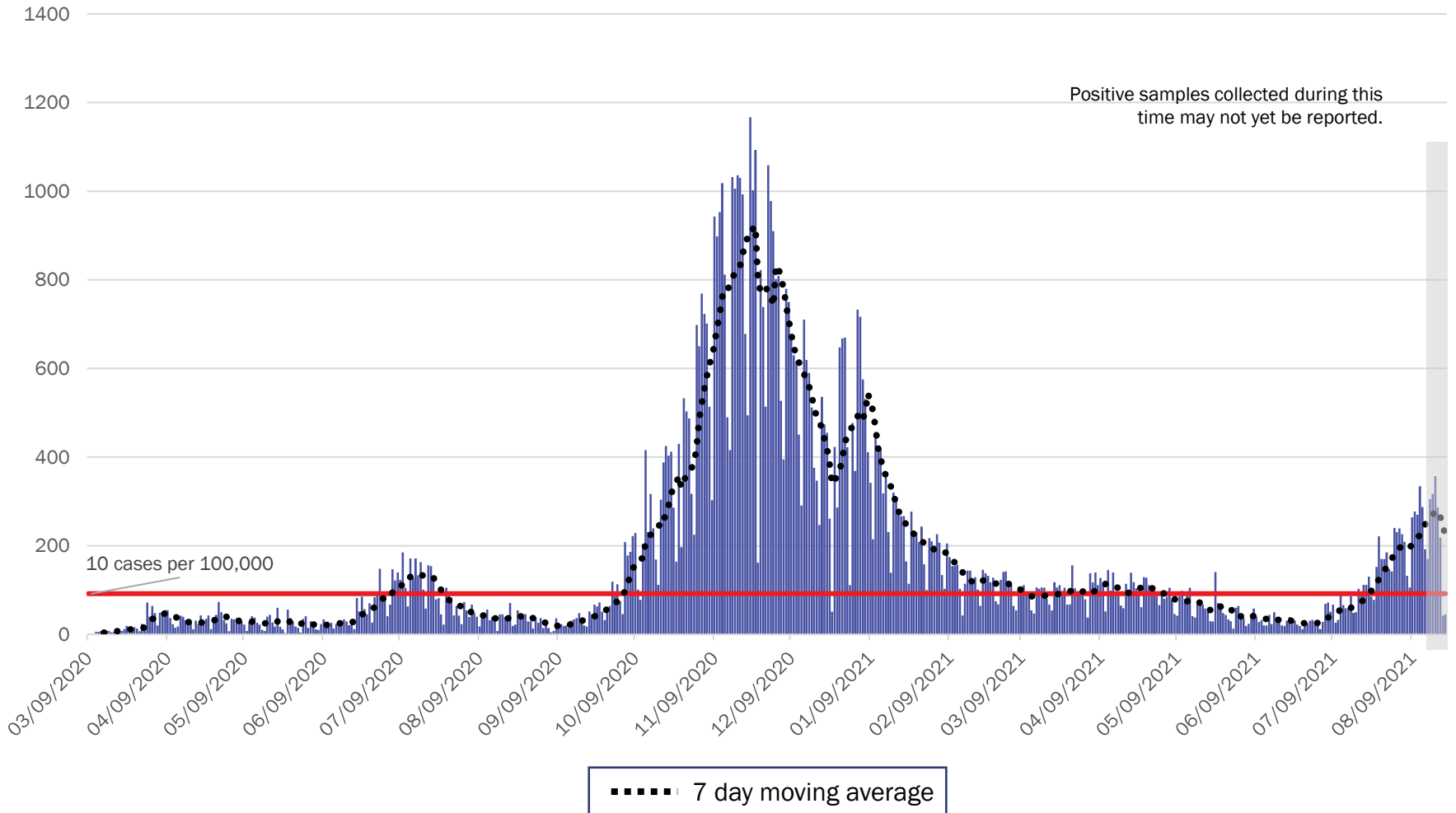
*

	Region	Growth Acceleration August 16, 2021
1	Metro	3.4
2	Northeast	2.6
3	Northwest	1.4
4	Southeast	6.4
5	Southwest	1.1

*Positive specimens collected in the last 7 or more days may not yet be reported to NMDOH. Case counts and growth acceleration during this time are underestimated.

Source: Infectious Disease Epidemiology Bureau, Epidemiology and Response Division 8.23.2021, New Mexico Department of Health.

Metro Region Case Count by Collection Date with 7 Day Moving Average August 23, 2021



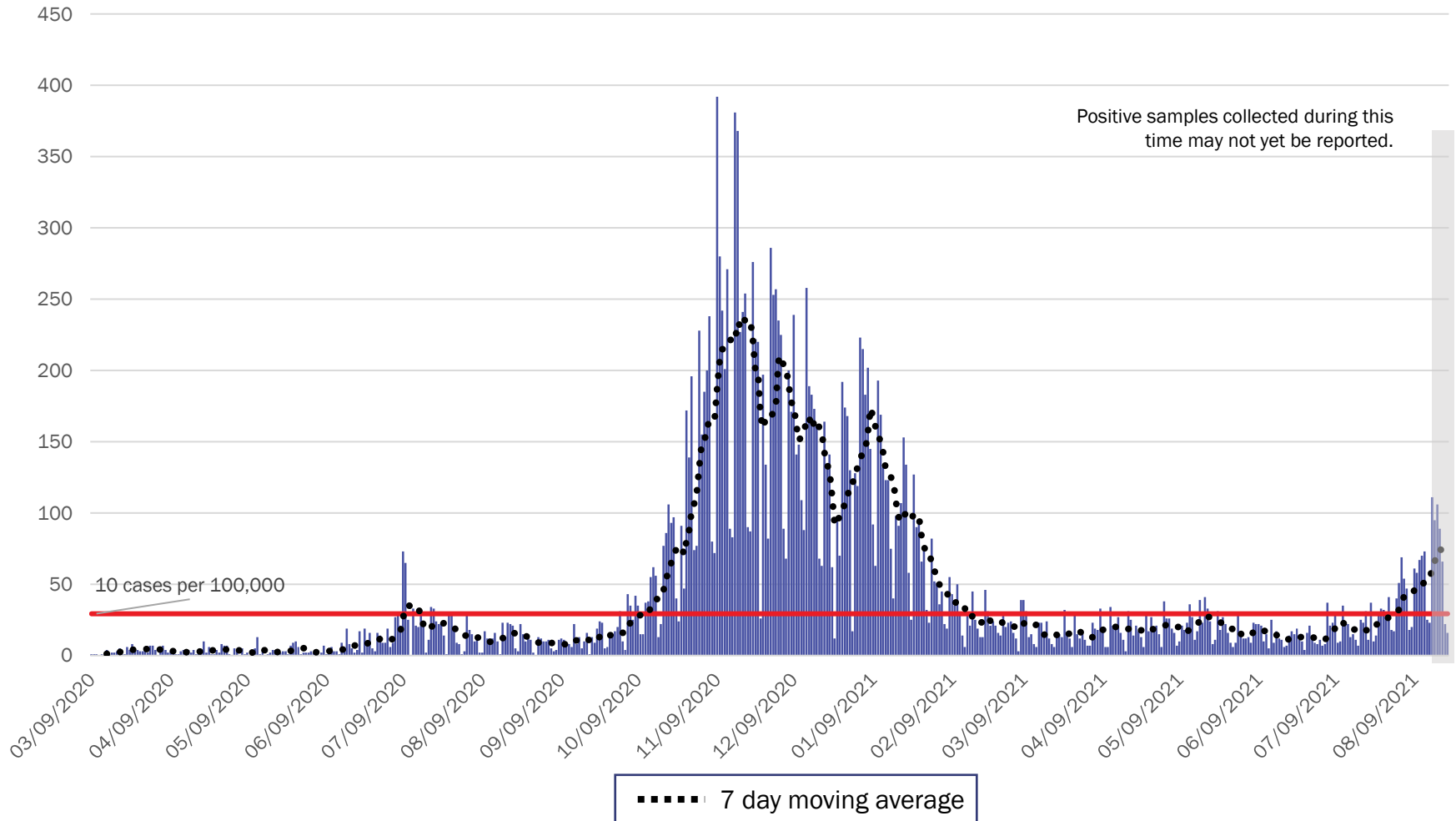
Source: Infectious Disease Epidemiology Bureau, Epidemiology and Response Division 8.23.2021, New Mexico Department of Health.



Investing for tomorrow, delivering today.

1190 S. St. Francis Drive • Santa Fe, NM 87505 • Phone: 505-827-2613 • Fax: 505-827-2530 • nmhealth.org

Northeast Region Case Count by Collection Date with 7 Day Moving Average August 23, 2021



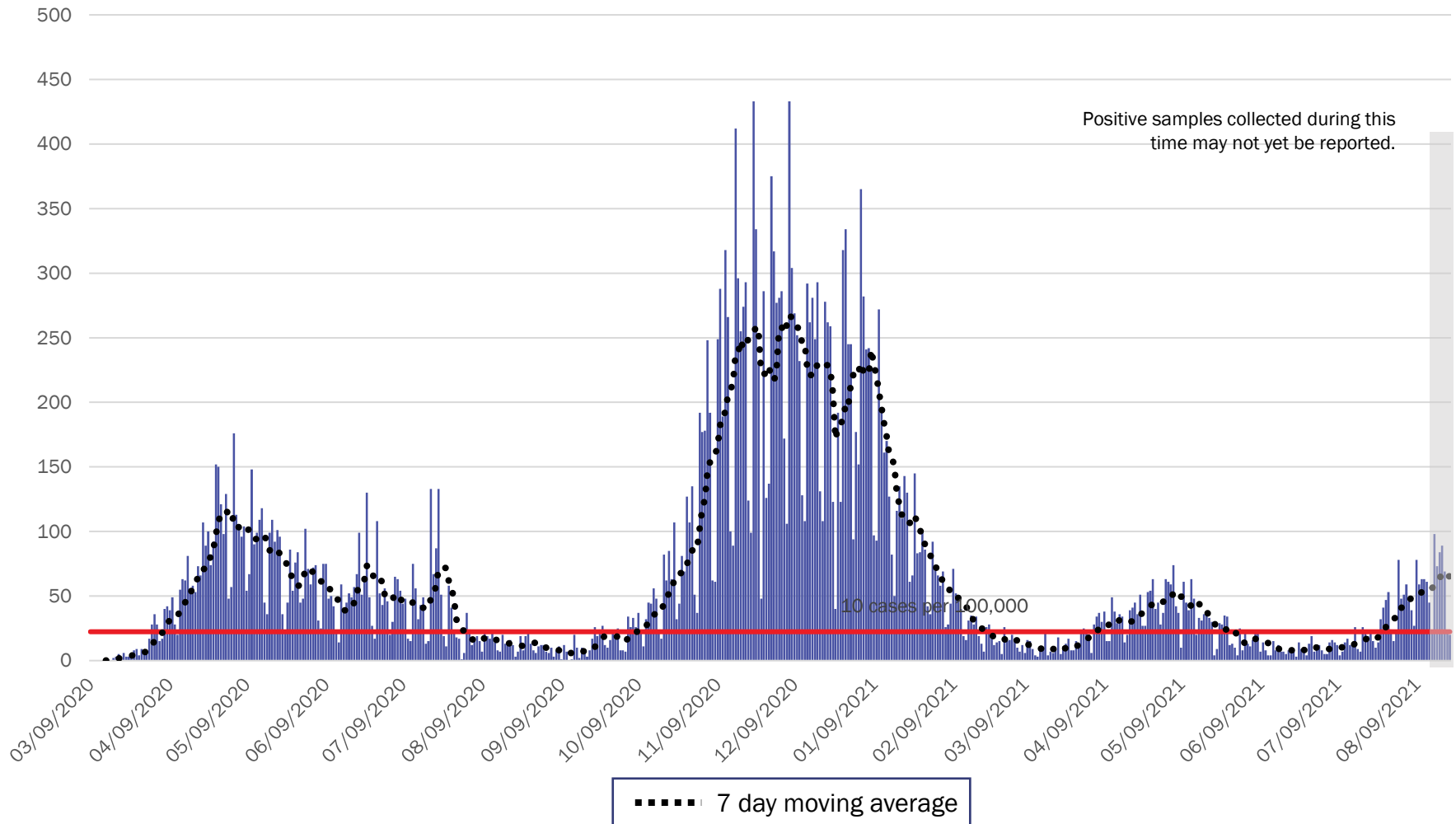
Source: Infectious Disease Epidemiology Bureau, Epidemiology and Response Division 8.23.2021, New Mexico Department of Health.



Investing for tomorrow, delivering today.

1190 S. St. Francis Drive • Santa Fe, NM 87505 • Phone: 505-827-2613 • Fax: 505-827-2530 • nmhealth.org

Northwest Region Case Count by Collection Date with 7 Day Moving Average August 23, 2021



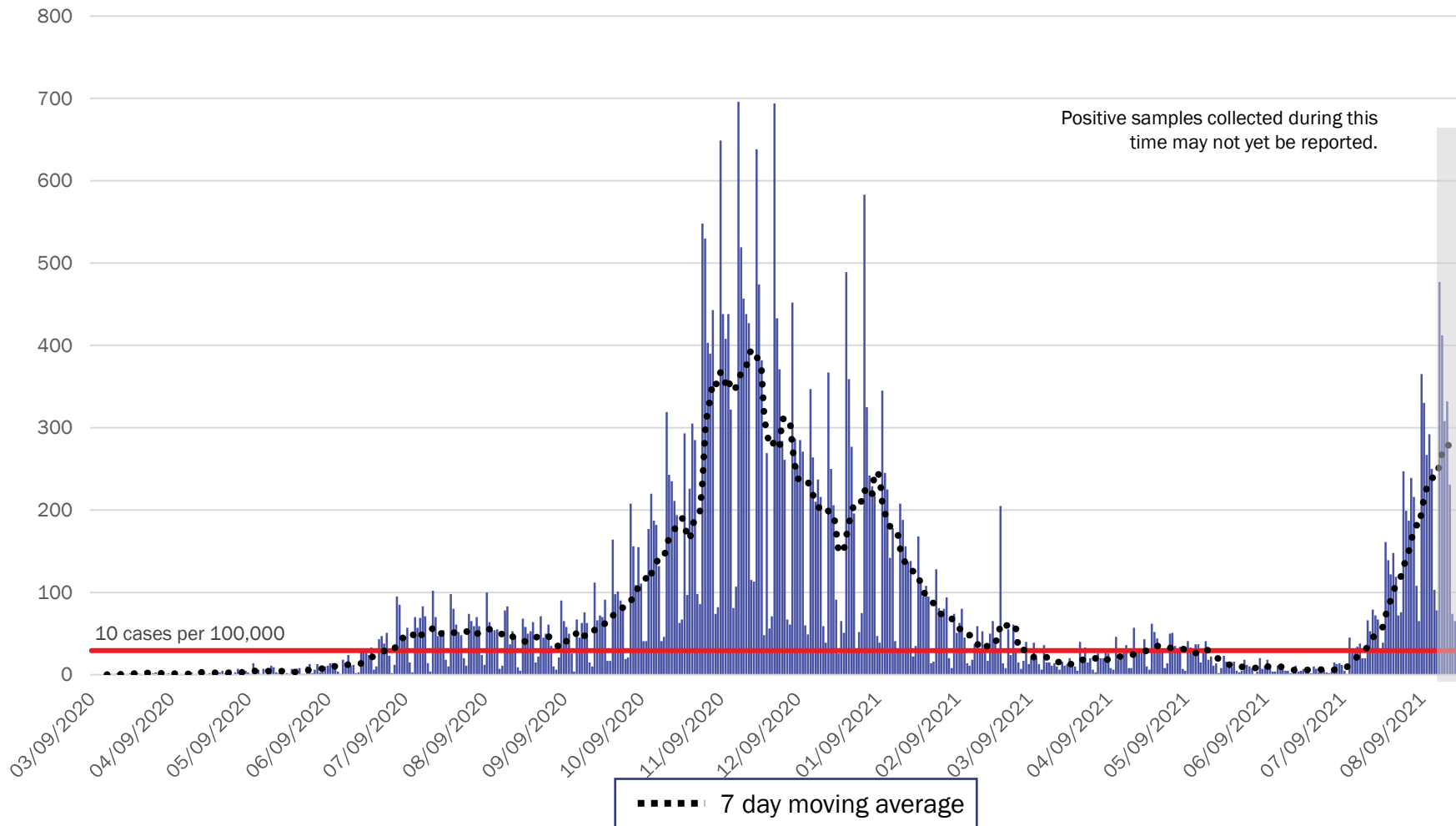
Source: Infectious Disease Epidemiology Bureau, Epidemiology and Response Division 8.23.2021, New Mexico Department of Health.



Investing for tomorrow, delivering today.

1190 S. St. Francis Drive • Santa Fe, NM 87505 • Phone: 505-827-2613 • Fax: 505-827-2530 • nmhealth.org

Southeast Region Case Count by Collection Date with 7 Day Moving Average August 23, 2021



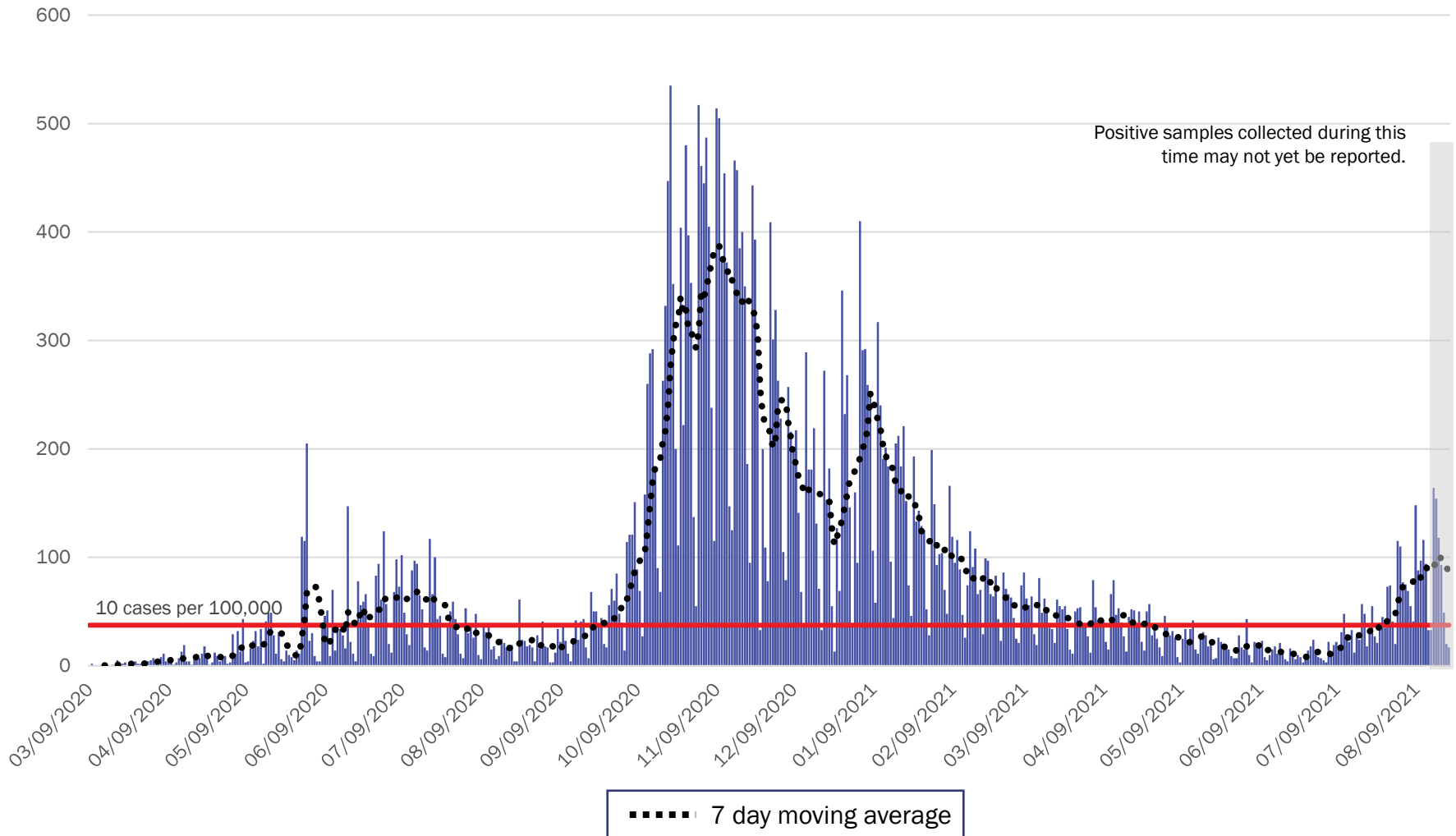
Source: Infectious Disease Epidemiology Bureau, Epidemiology and Response Division 8.23.2021, New Mexico Department of Health.



Investing for tomorrow, delivering today.

1190 S. St. Francis Drive • Santa Fe, NM 87505 • Phone: 505-827-2613 • Fax: 505-827-2530 • nmhealth.org

Southwest Region Case Count by Collection Date with 7 Day Moving Average August 23, 2021



Source: Infectious Disease Epidemiology Bureau, Epidemiology and Response Division 8.23.2021, New Mexico Department of Health.



Investing for tomorrow, delivering today.

1190 S. St. Francis Drive • Santa Fe, NM 87505 • Phone: 505-827-2613 • Fax: 505-827-2530 • nmhealth.org

New Mexico Status Updates

- Case count: Statewide, daily case counts continue to increase.
- Hospitalizations: COVID-19 hospitalizations continue to increase.
- Deaths: COVID-19 deaths remain at a plateau.

For more information, please visit the [Epidemiology Reports](https://cv.nmhealth.org/epidemiology-reports/) page on the NMDOH COVID-19 website: <https://cv.nmhealth.org/epidemiology-reports/>