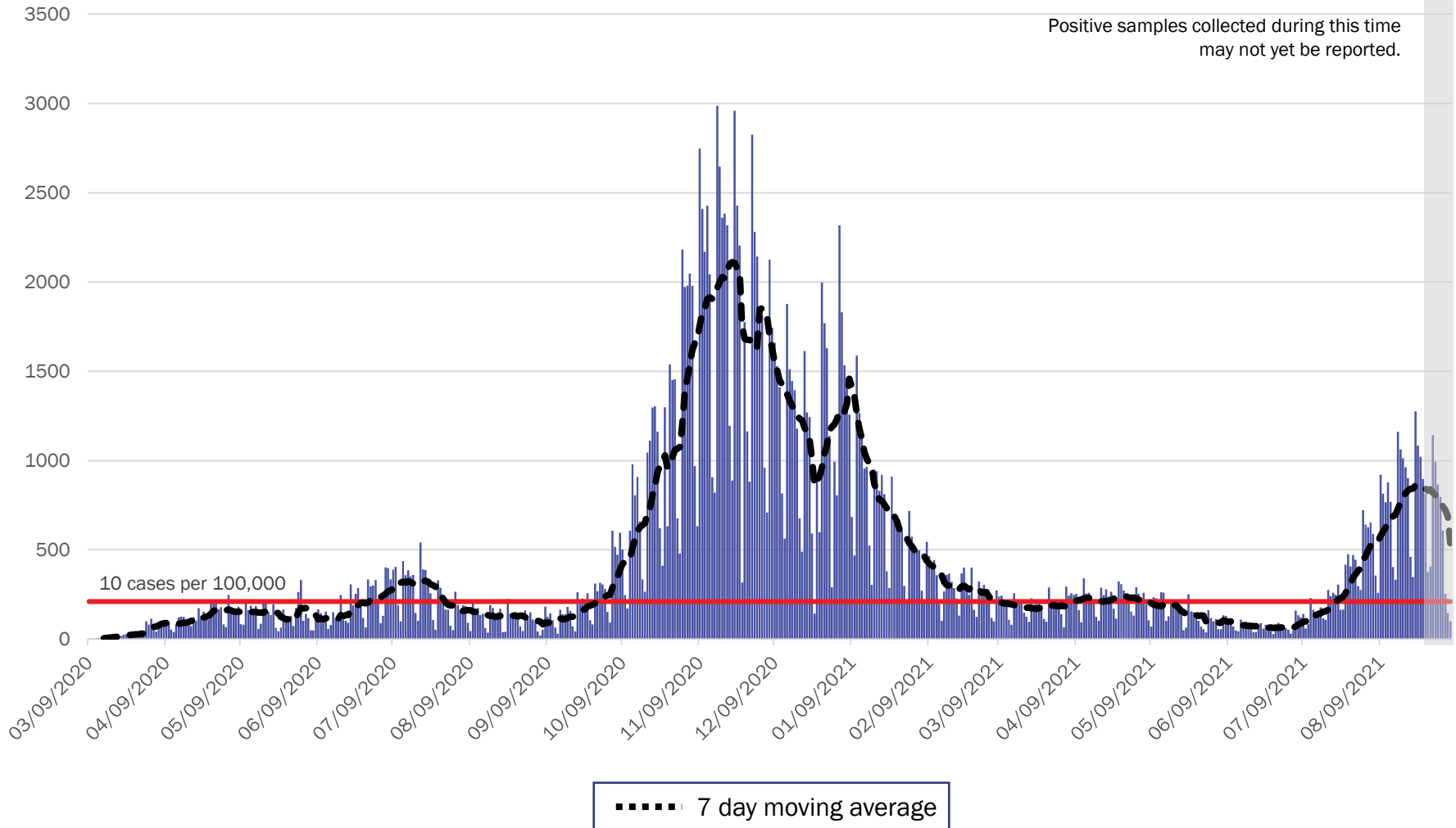


COVID-19 in New Mexico: Epidemiologic and Modeling Update

September 7, 2021

New Mexico COVID-19 Cases by Date of Specimen Collection September 7, 2021



Source: Infectious Disease Epidemiology Bureau, Epidemiology and Response Division 9.7.2021, New Mexico Department of Health.



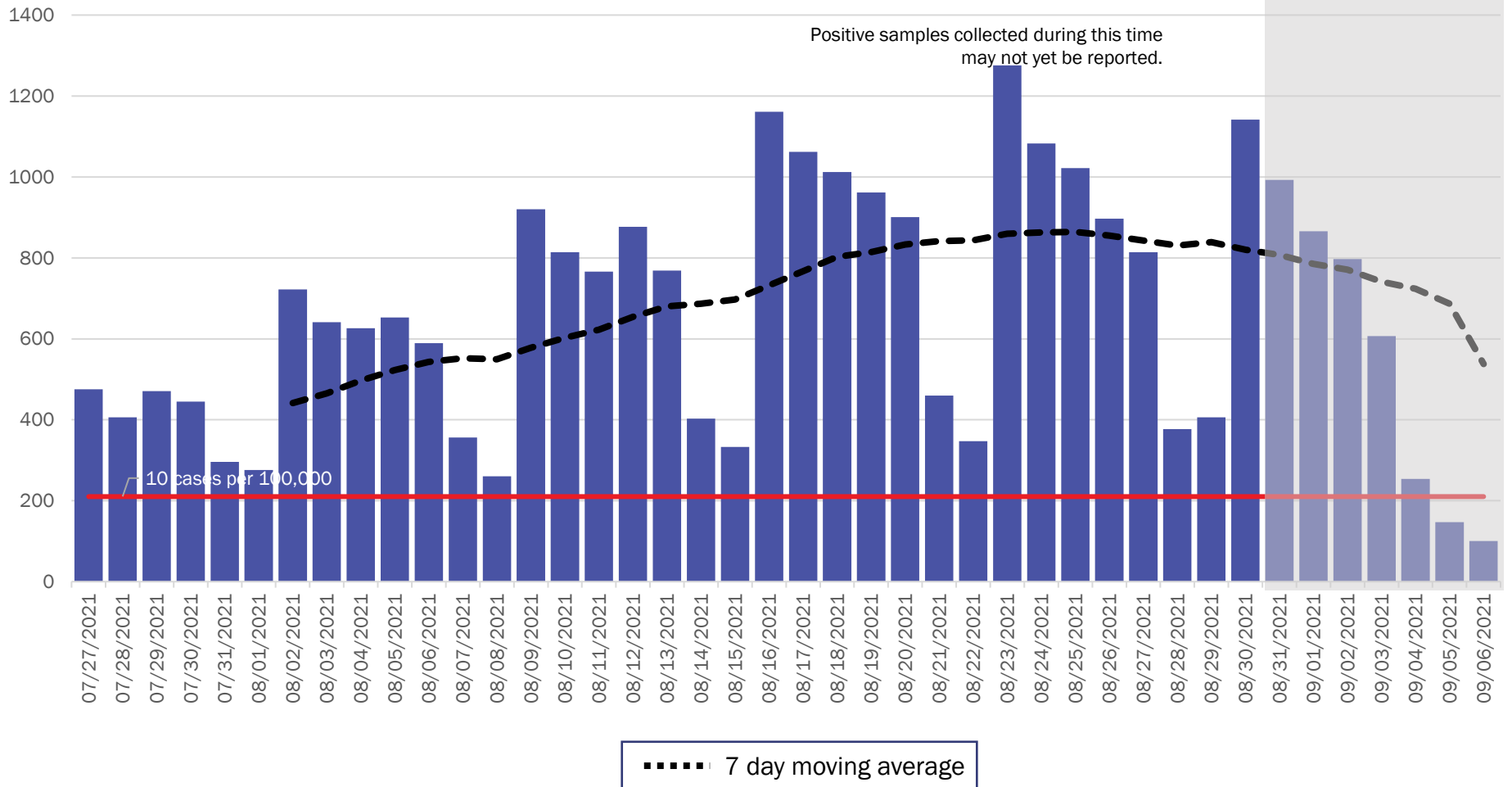
Investing for tomorrow, delivering today.

1190 S. St. Francis Drive • Santa Fe, NM 87505 • Phone: 505-827-2613 • Fax: 505-827-2530 • nmhealth.org

New Mexico COVID-19 Cases by Date of Specimen Collection

Recent 6 Week View

September 7, 2021



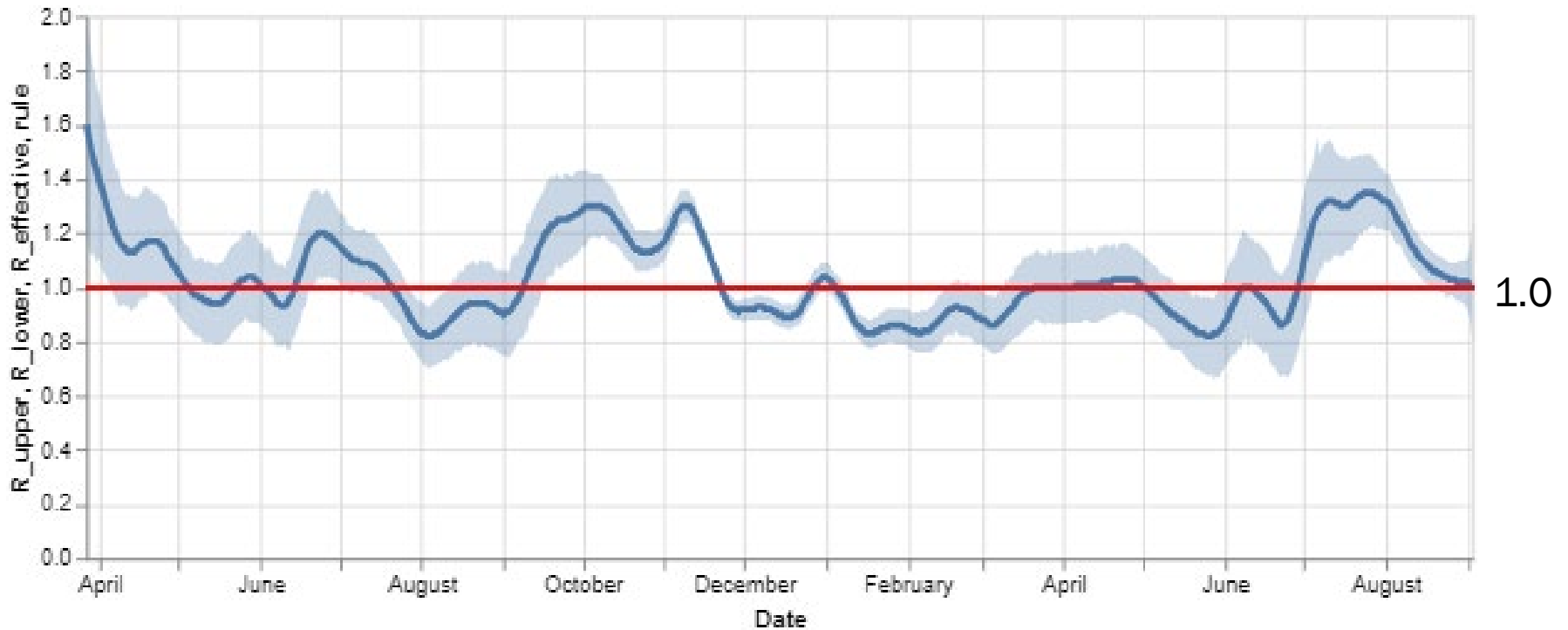
Source: Infectious Disease Epidemiology Bureau, Epidemiology and Response Division 9.7.2021, New Mexico Department of Health.



Investing for tomorrow, delivering today.

1190 S. St. Francis Drive • Santa Fe, NM 87505 • Phone: 505-827-2613 • Fax: 505-827-2530 • nmhealth.org

Statewide R-effective has remained at 1.0



1.0

Courtesy of Presbyterian Healthcare Services – September 3, 2021.



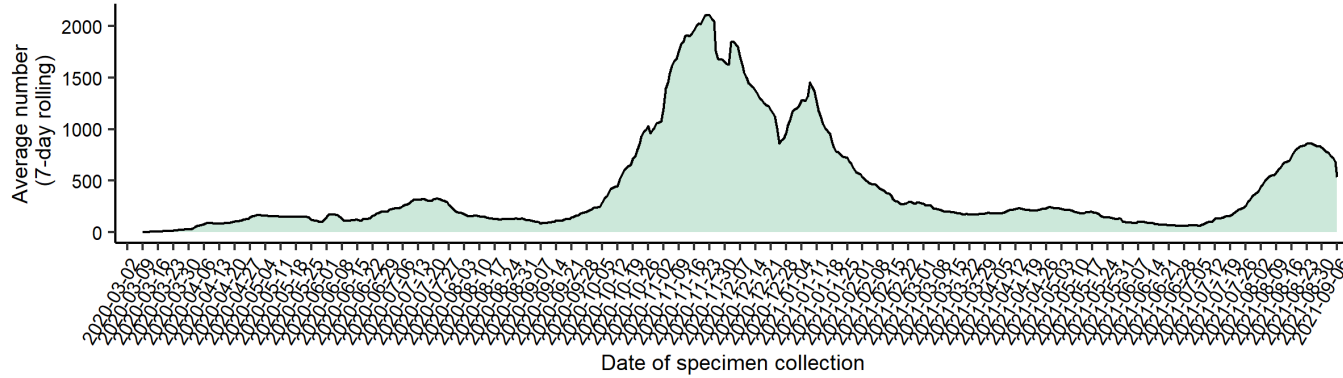
Investing for tomorrow, delivering today.



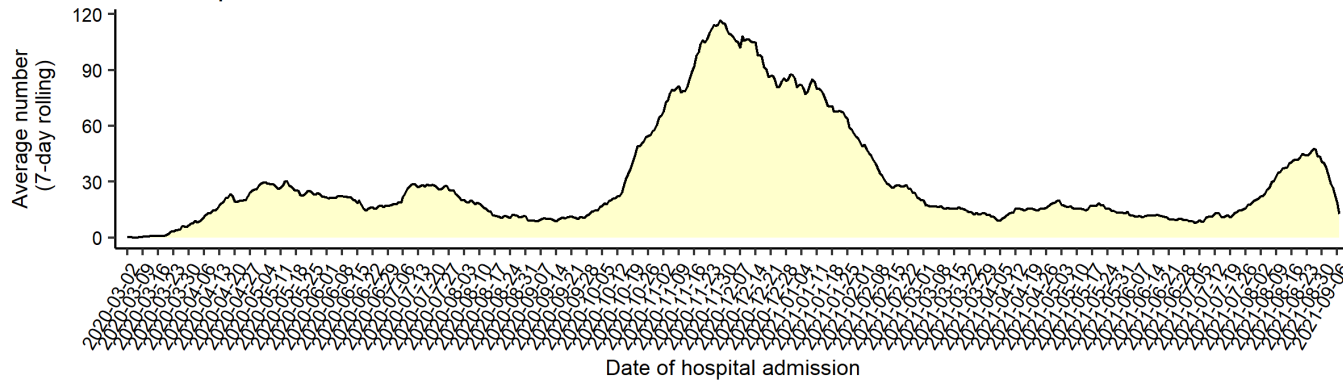
1190 S. St. Francis Drive • Santa Fe, NM 87505 • Phone: 505-827-2613 • Fax: 505-827-2530 • nmhealth.org

Average number (7-day rolling average) of cases, hospitalizations, and deaths over time

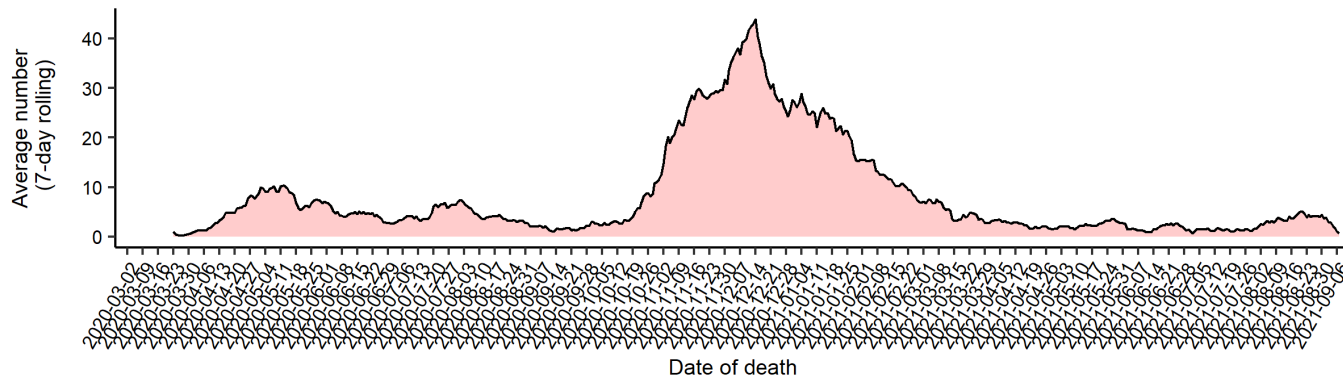
Cases



Hospitalizations



Deaths



Note: Cases, hospitalizations, and deaths may not yet be reported in 7 or more days.

As of 9/7/21



Key

Low Level Endemic
 <1.0

Approaching Low Level Endemic
 1.0

Requiring further mitigation
 >1.0

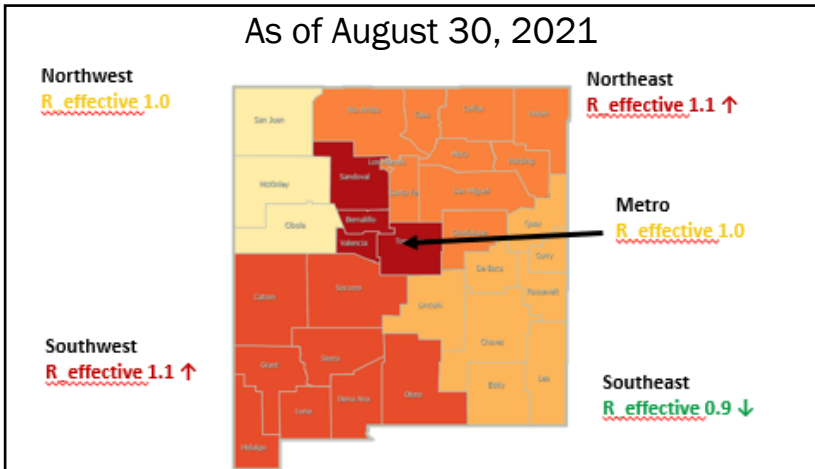
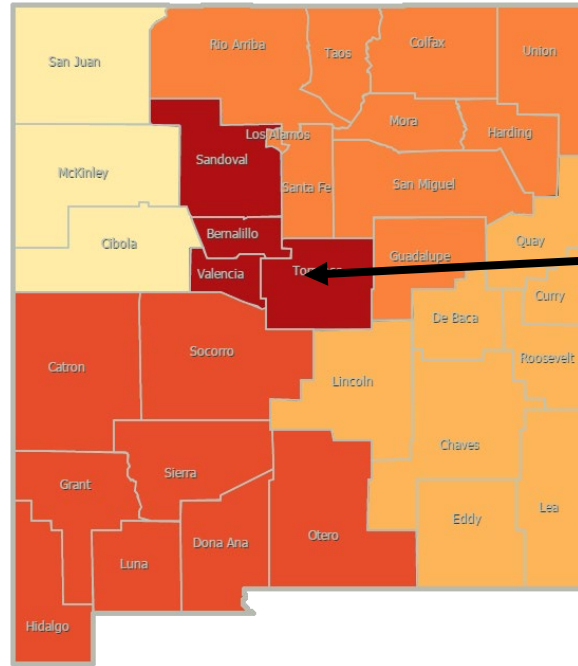
Northwest
 $R_{\text{effective}} 1.1 \uparrow$

Northeast
 $R_{\text{effective}} 1.1 \uparrow$

Metro
 $R_{\text{effective}} 1.0$

Southwest
 $R_{\text{effective}} 1.1 \uparrow$

Southeast
 $R_{\text{effective}} 1.0$

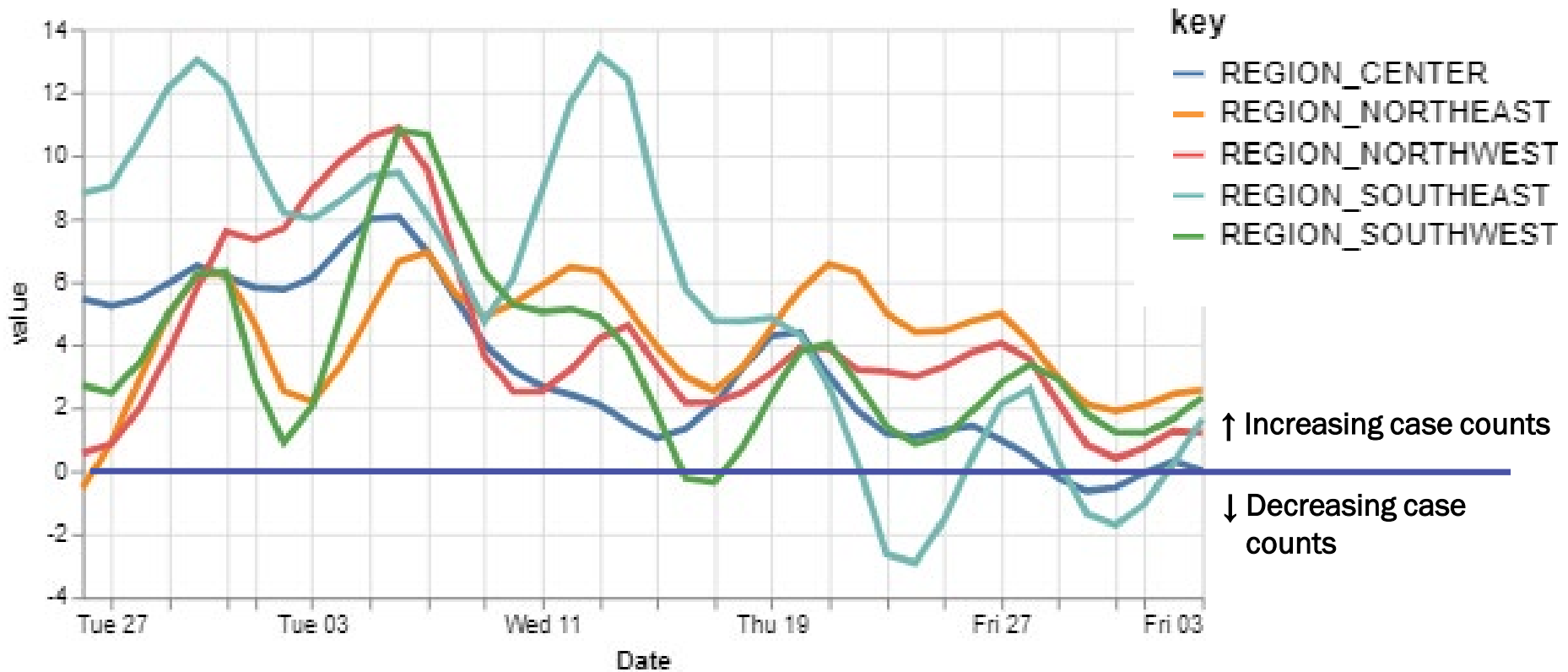


Region	R-effective	95% Confidence Interval
State	1.0	[0.8, 1.2]
Metro	1.0	[0.6, 1.4]
Northeast	1.1	[0.5, 1.8]
Northwest	1.1	[0.4, 1.9]
Southeast	1.0	[0.6, 1.4]
Southwest	1.1	[0.5, 1.6]

Courtesy of Presbyterian Healthcare Services – September 3, 2021.

All regions have relative growth rates greater than 0.

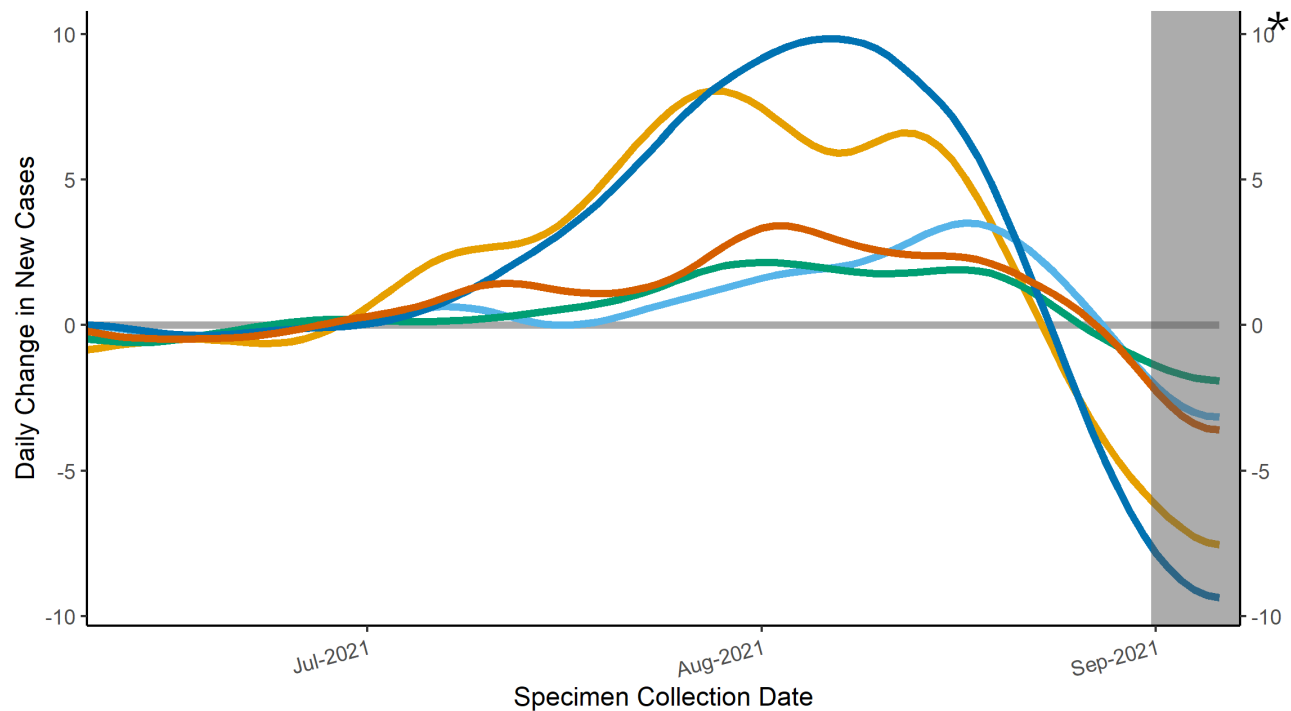
14-day relative growth rate (%), Regions



Courtesy of Presbyterian Healthcare Services – September 6, 2021.

Epidemic Growth Acceleration

Daily Change in New COVID-19 Cases, by New Mexico Region, as of September 07, 2021



Region	Growth Acceleration August 31, 2021
1 Metro	-5.7
2 Northeast	-1.6
3 Northwest	-1.2
4 Southeast	-7.2
5 Southwest	-1.7

Regions — Metro — Northeast — Northwest — Southeast — Southwest

*Positive specimens collected in the last 7 or more days may not yet be reported to NMDOH. Case counts and growth acceleration during this time are underestimated.

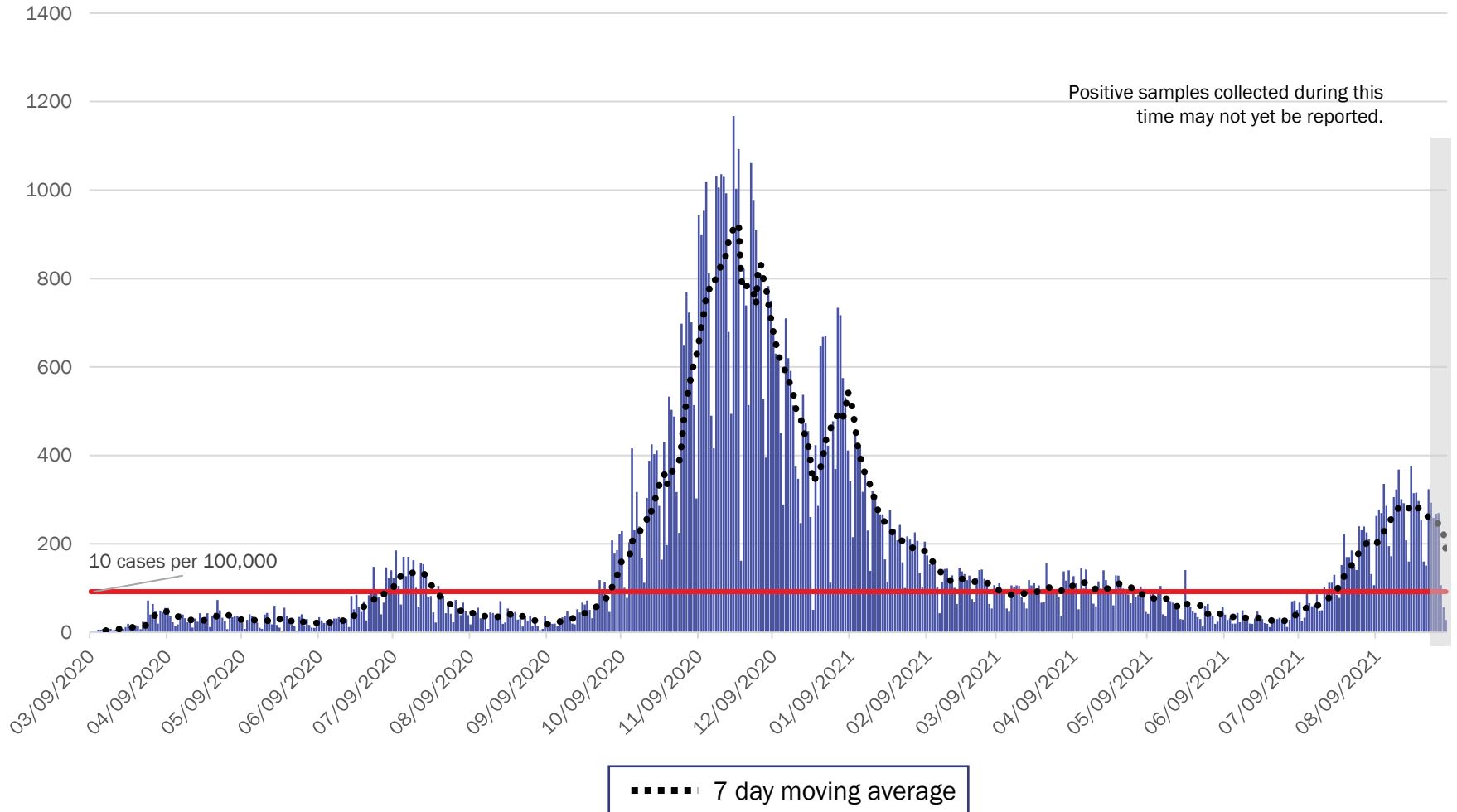
Source: Infectious Disease Epidemiology Bureau, Epidemiology and Response Division 9.7.2021, New Mexico Department of Health.



Investing for tomorrow, delivering today.

1190 S. St. Francis Drive • Santa Fe, NM 87505 • Phone: 505-827-2613 • Fax: 505-827-2530 • nmhealth.org

Metro Region Case Count by Collection Date with 7 Day Moving Average September 7, 2021



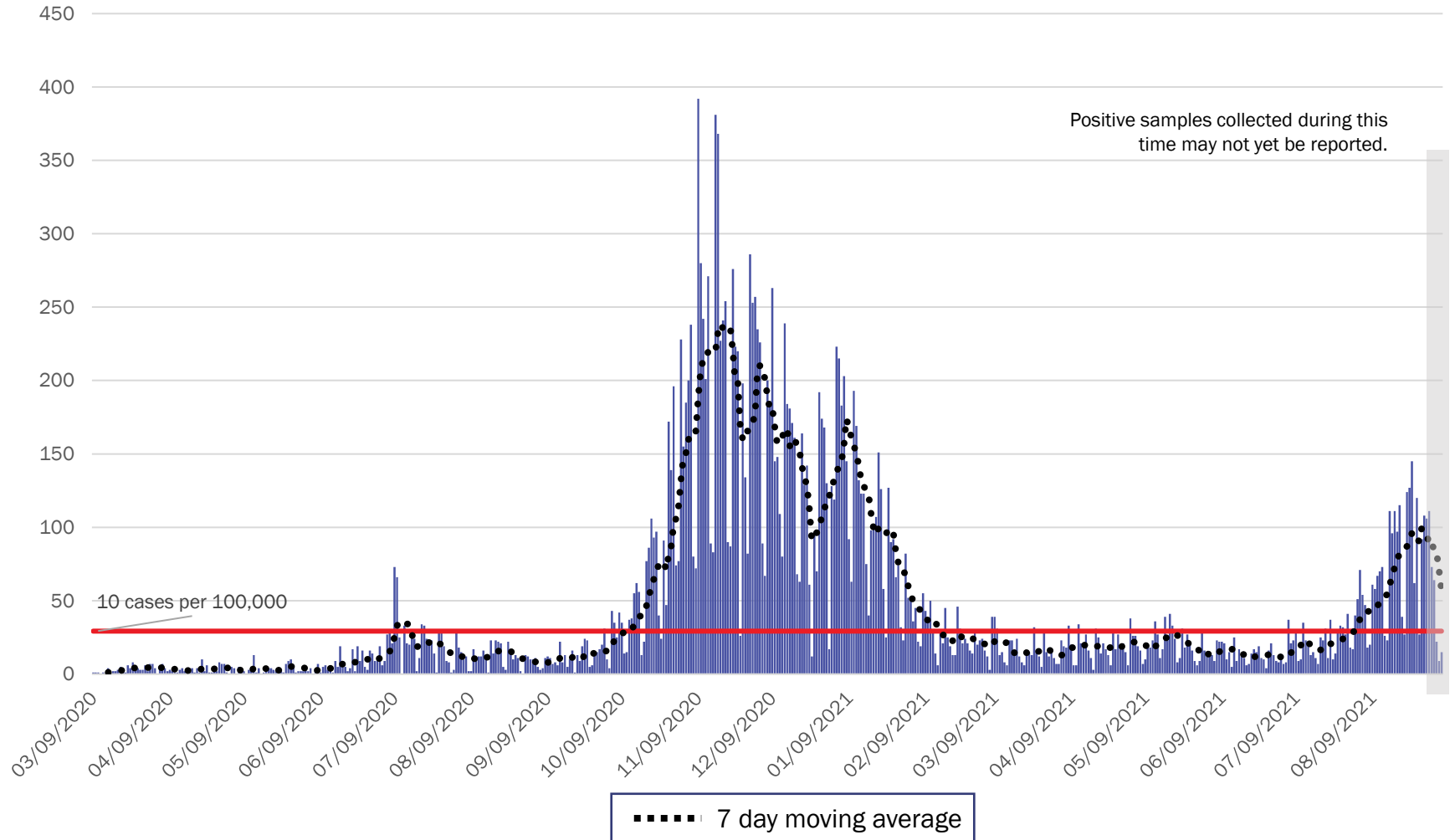
Source: Infectious Disease Epidemiology Bureau, Epidemiology and Response Division 9.7.2021, New Mexico Department of Health.



Investing for tomorrow, delivering today.

1190 S. St. Francis Drive • Santa Fe, NM 87505 • Phone: 505-827-2613 • Fax: 505-827-2530 • nmhealth.org

Northeast Region Case Count by Collection Date with 7 Day Moving Average September 7, 2021



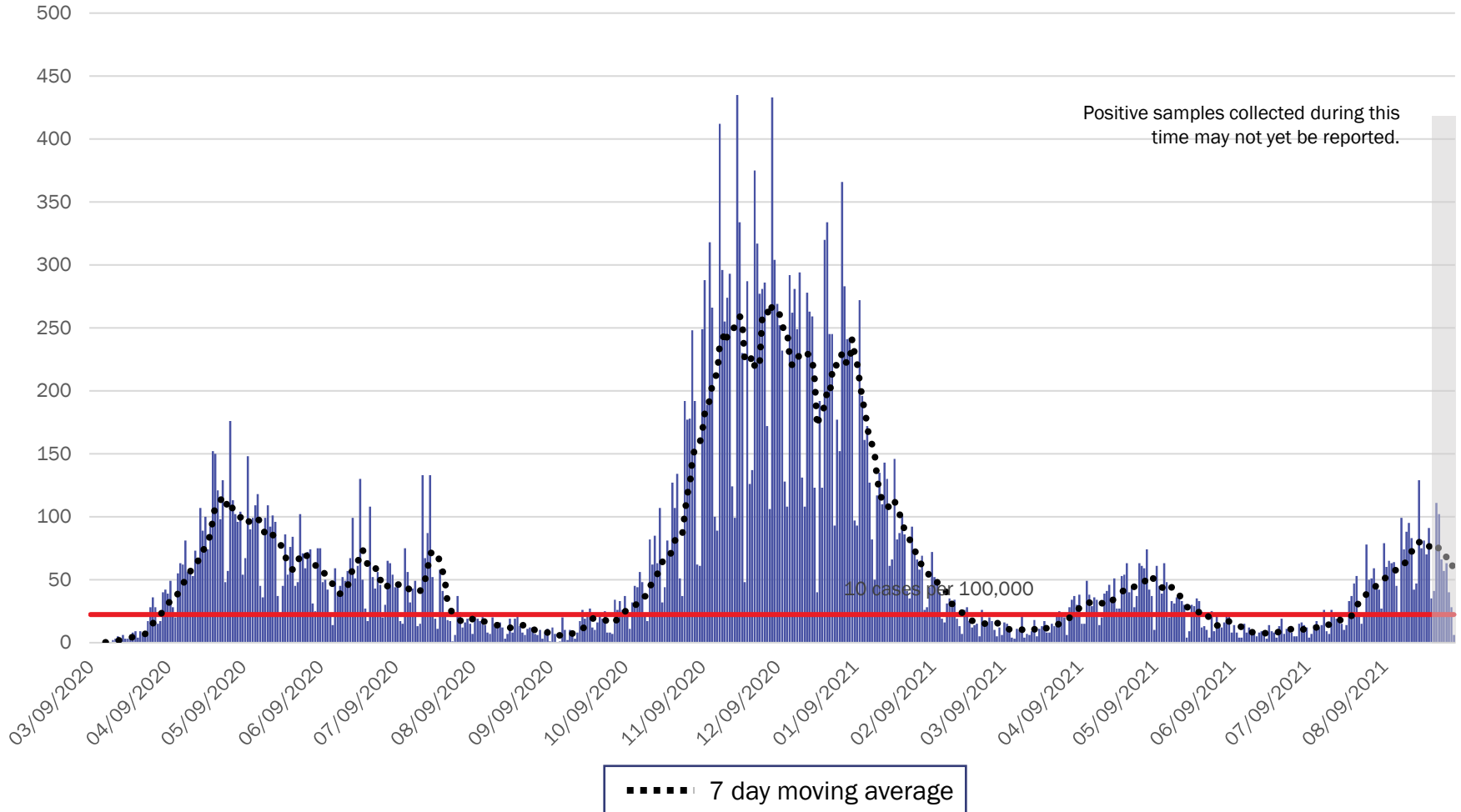
Source: Infectious Disease Epidemiology Bureau, Epidemiology and Response Division 9.7.2021, New Mexico Department of Health.



Investing for tomorrow, delivering today.

1190 S. St. Francis Drive • Santa Fe, NM 87505 • Phone: 505-827-2613 • Fax: 505-827-2530 • nmhealth.org

Northwest Region Case Count by Collection Date with 7 Day Moving Average September 7, 2021



Source: Infectious Disease Epidemiology Bureau, Epidemiology and Response Division 9.7.2021, New Mexico Department of Health.

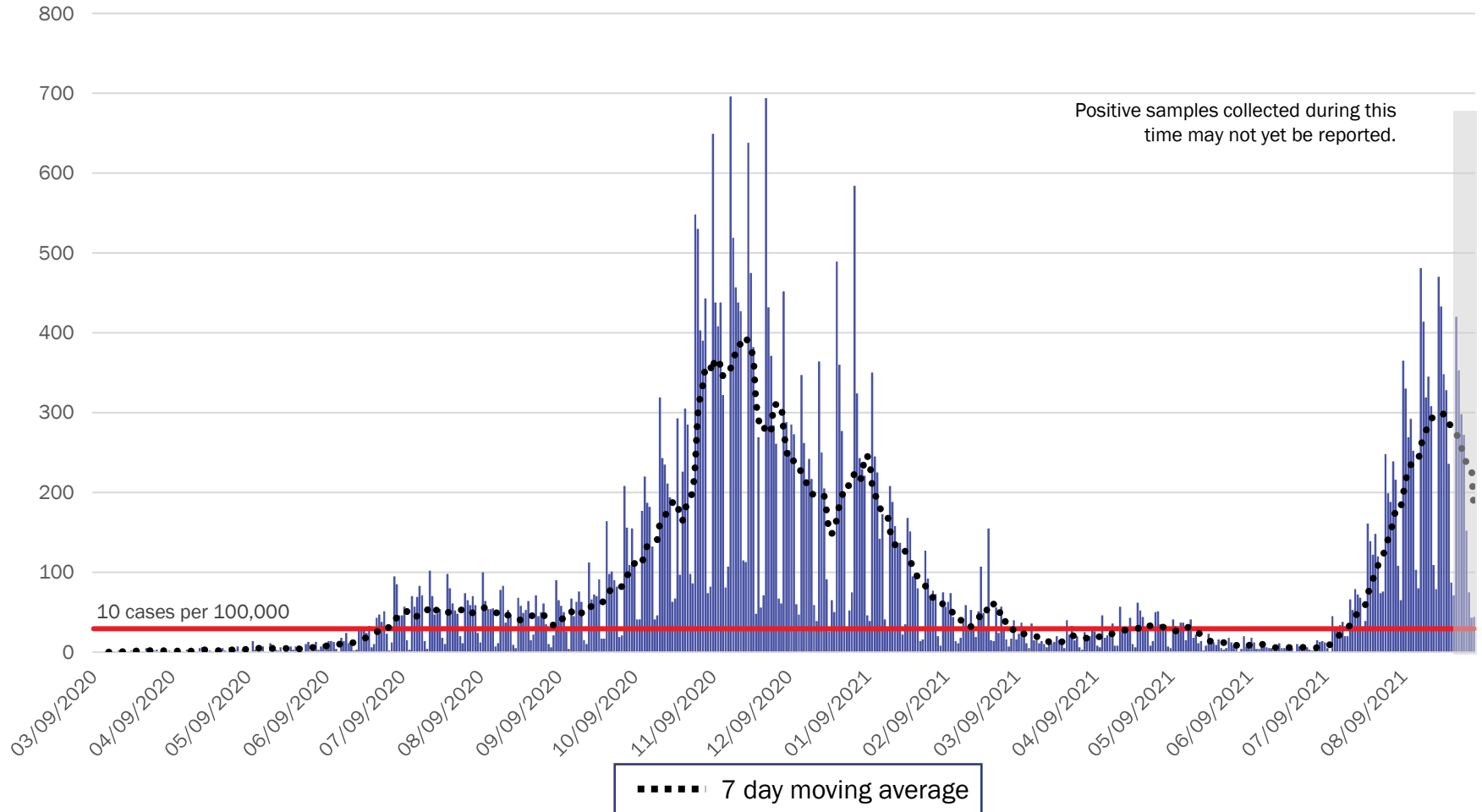


Investing for tomorrow, delivering today.



1190 S. St. Francis Drive • Santa Fe, NM 87505 • Phone: 505-827-2613 • Fax: 505-827-2530 • nmhealth.org

Southeast Region Case Count by Collection Date with 7 Day Moving Average September 7, 2021



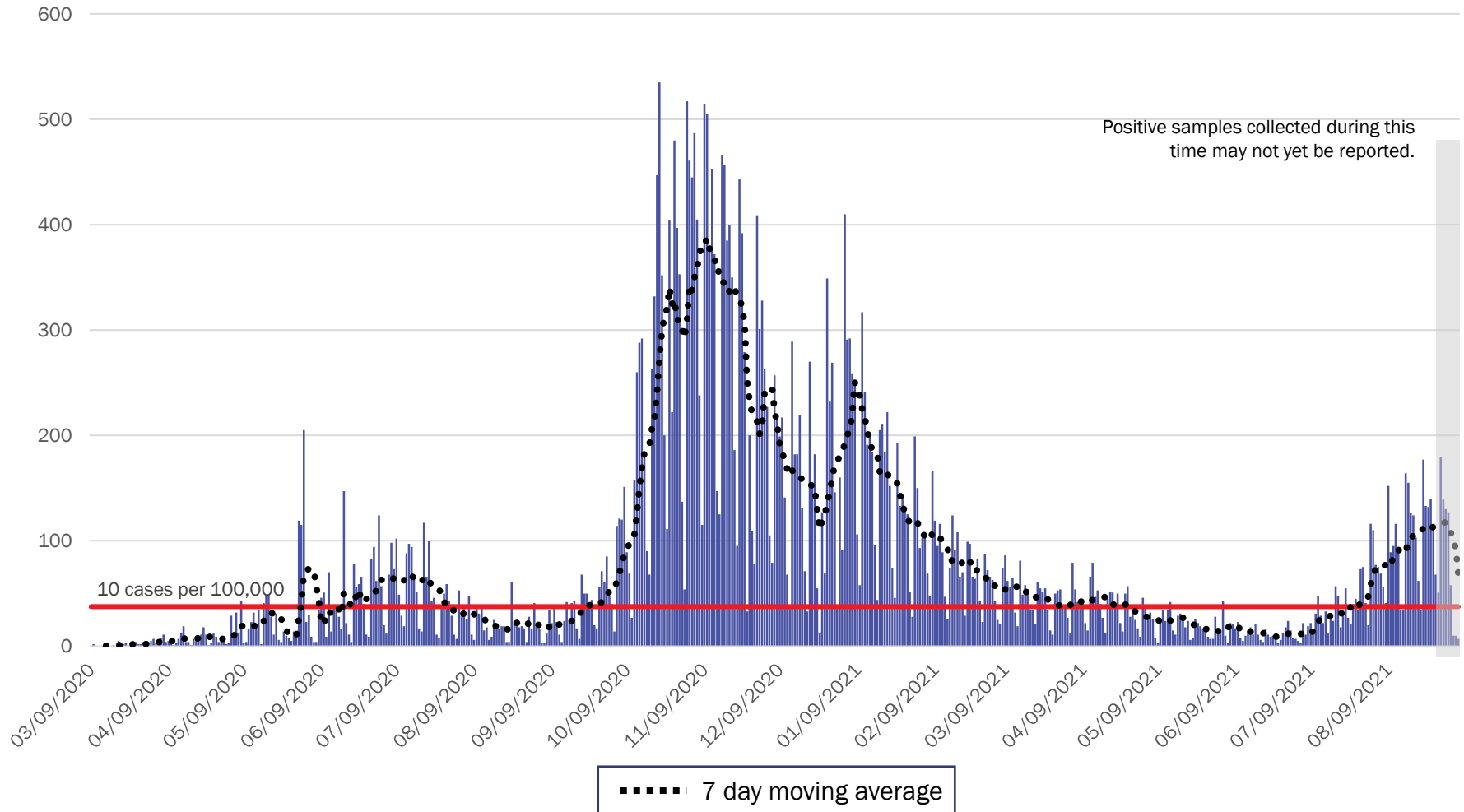
Source: Infectious Disease Epidemiology Bureau, Epidemiology and Response Division 9.7.2021, New Mexico Department of Health.



Investing for tomorrow, delivering today.

1190 S. St. Francis Drive • Santa Fe, NM 87505 • Phone: 505-827-2613 • Fax: 505-827-2530 • nmhealth.org

Southwest Region Case Count by Collection Date with 7 Day Moving Average September 7, 2021



Source: Infectious Disease Epidemiology Bureau, Epidemiology and Response Division 9.7.2021, New Mexico Department of Health.



Investing for tomorrow, delivering today.



1190 S. St. Francis Drive • Santa Fe, NM 87505 • Phone: 505-827-2613 • Fax: 505-827-2530 • nmhealth.org

New Mexico Status Updates

- Case count: Statewide, daily case counts may be starting to decrease.
- Hospitalizations: COVID-19 hospitalizations may be starting to decrease.
- Deaths: COVID-19 deaths remain at a plateau.

For more information, please visit the [Epidemiology Reports](https://cv.nmhealth.org/epidemiology-reports/) page on the NMDOH COVID-19 website: <https://cv.nmhealth.org/epidemiology-reports/>