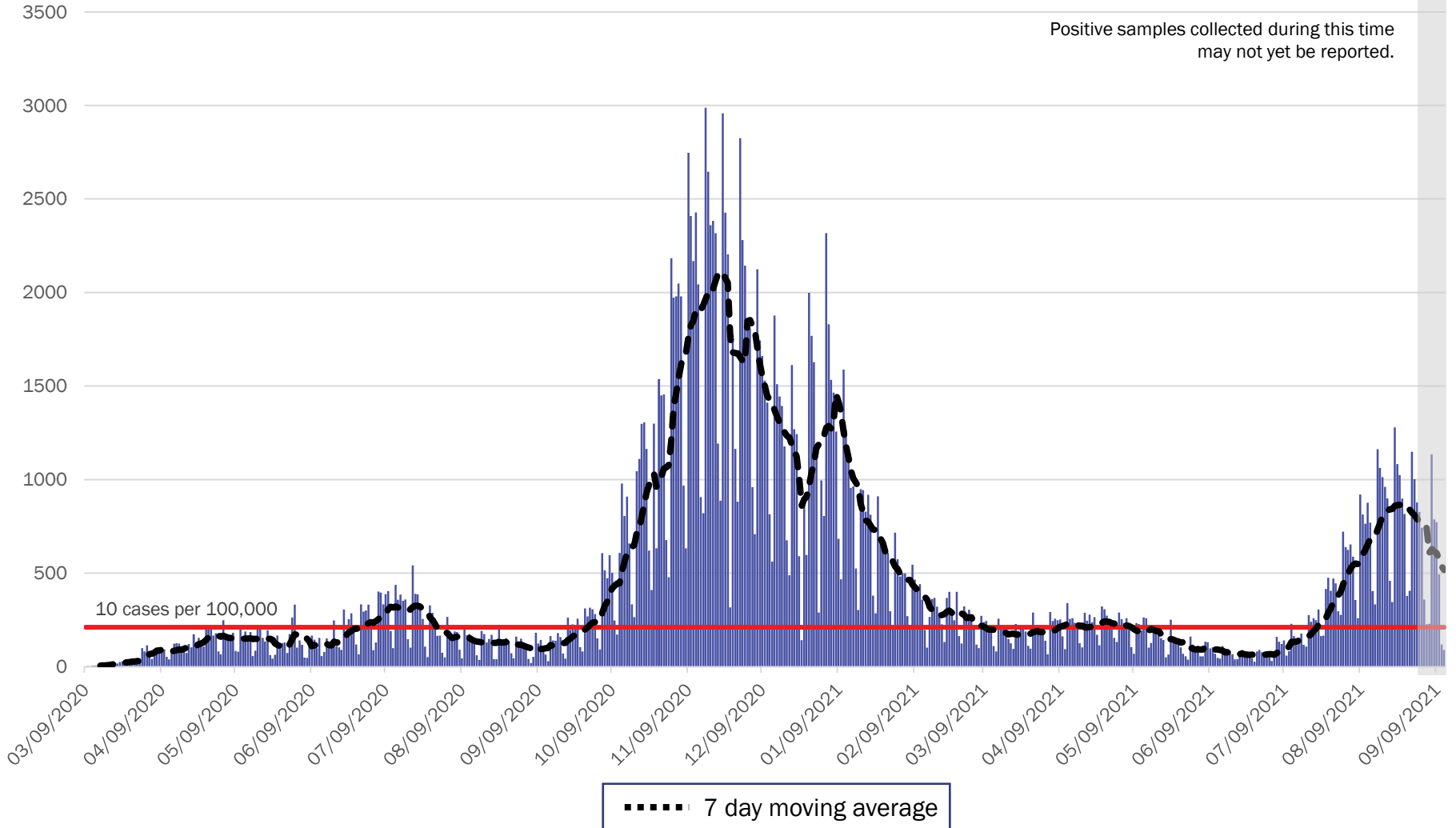


# COVID-19 in New Mexico: Epidemiologic and Modeling Update

September 14, 2021

# New Mexico COVID-19 Cases by Date of Specimen Collection September 13, 2021



Source: Infectious Disease Epidemiology Bureau, Epidemiology and Response Division 9.13.2021, New Mexico Department of Health.



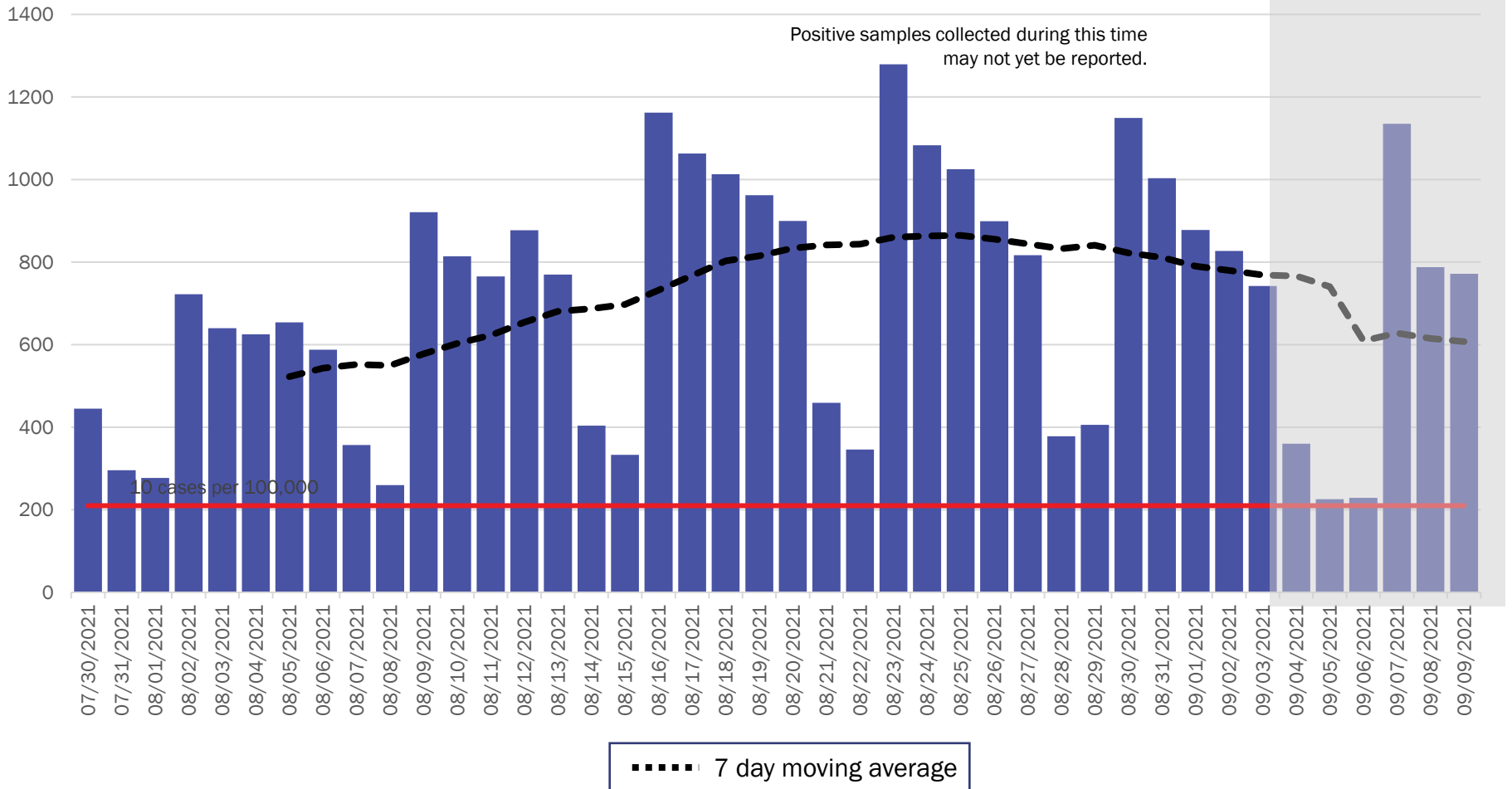
*Investing for tomorrow, delivering today.*

1190 S. St. Francis Drive • Santa Fe, NM 87505 • Phone: 505-827-2613 • Fax: 505-827-2530 • nmhealth.org

# New Mexico COVID-19 Cases by Date of Specimen Collection

## Recent 6 Week View

### September 13, 2021



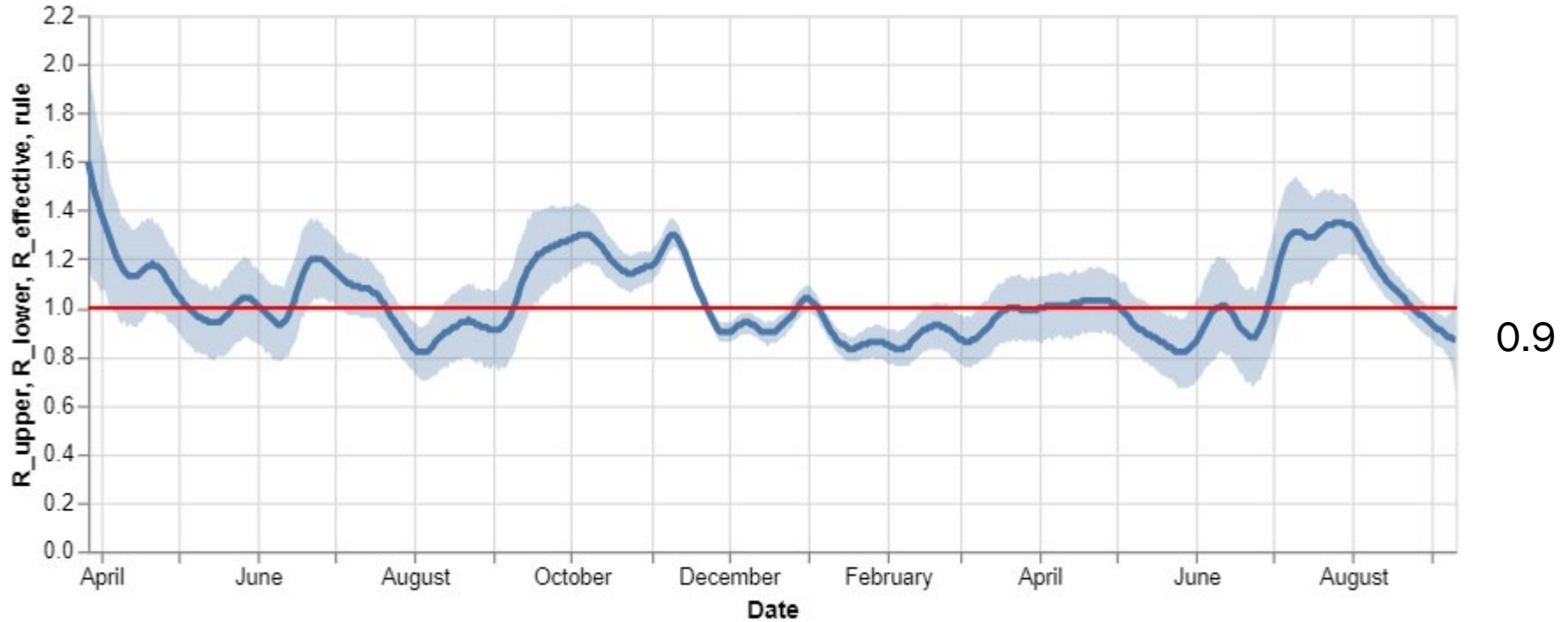
Source: Infectious Disease Epidemiology Bureau, Epidemiology and Response Division 9.13.2021, New Mexico Department of Health.



*Investing for tomorrow, delivering today.*

1190 S. St. Francis Drive • Santa Fe, NM 87505 • Phone: 505-827-2613 • Fax: 505-827-2530 • nmhealth.org

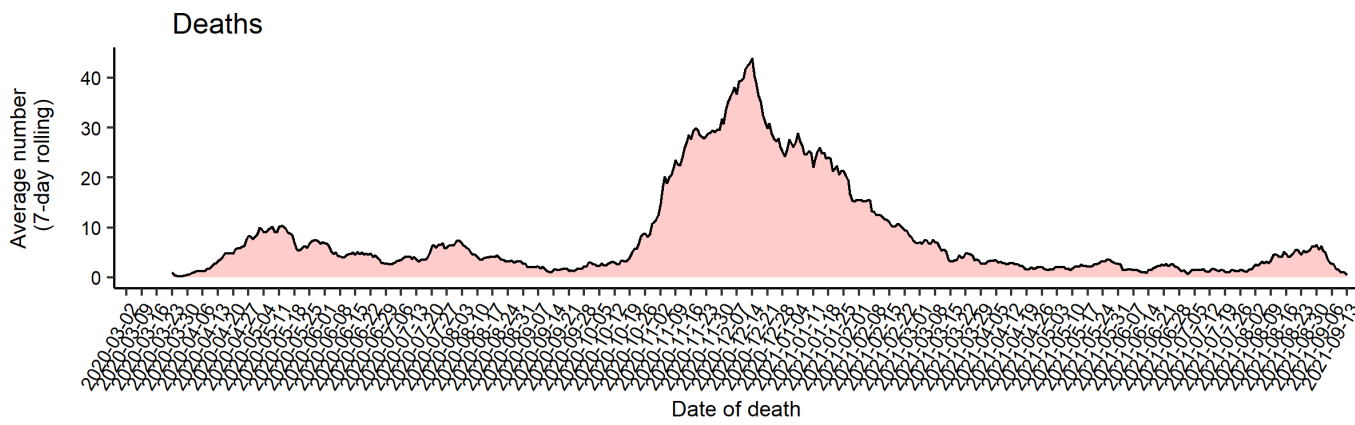
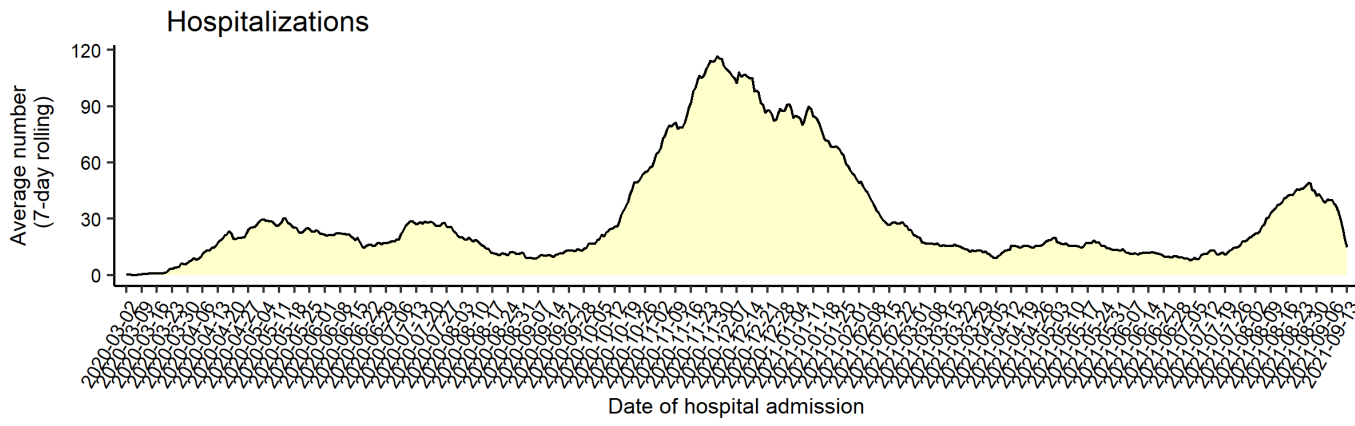
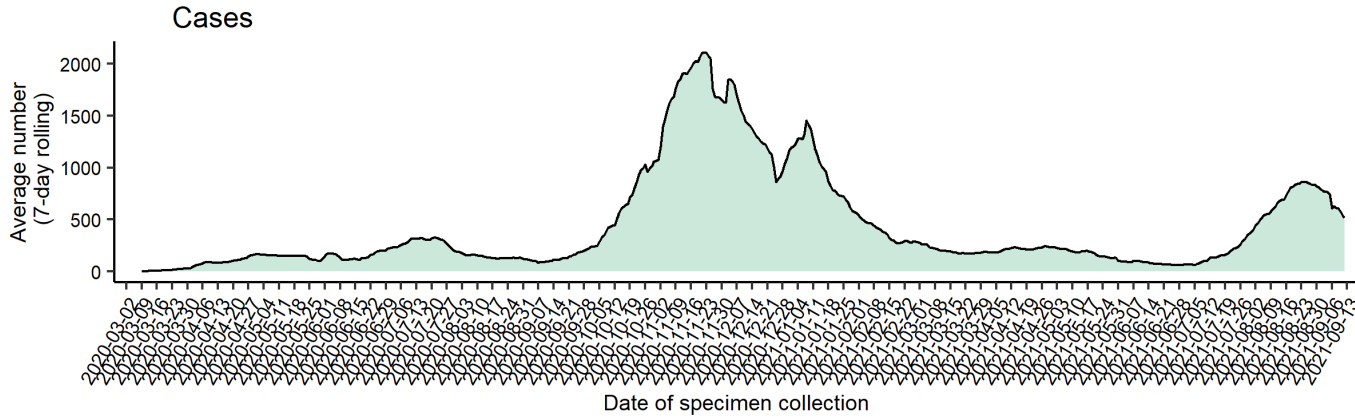
# Statewide R-effective has decreased to 0.9



0.9

Courtesy of Presbyterian Healthcare Services – September 10, 2021.

# Average number (7-day rolling average) of cases, hospitalizations, and deaths over time



*Note: Cases, hospitalizations, and deaths may not yet be reported in 7 or more days.*

*As of 9/13/21*



**Key**

↓ Low Level Endemic <1.0

Approaching Low Level Endemic 1.0

↑ Requiring further mitigation >1.0

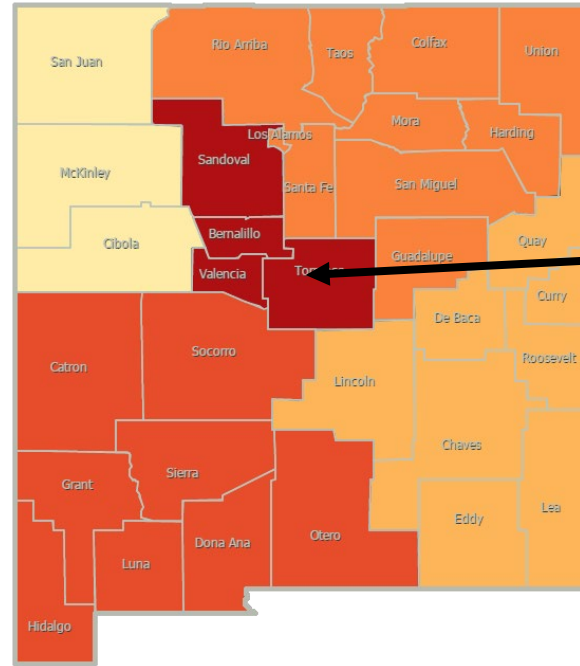
**Northwest**  
R\_effective 0.9 ↓

**Northeast**  
R\_effective 0.8 ↓

**Metro**  
R\_effective 0.8 ↓

**Southwest**  
R\_effective 0.9 ↓

**Southeast**  
R\_effective 0.9 ↓



As of September 3, 2021

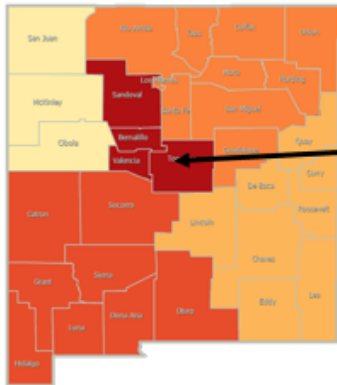
**Northwest**  
R\_effective 1.1 ↑

**Northeast**  
R\_effective 1.1 ↑

**Metro**  
R\_effective 1.0

**Southwest**  
R\_effective 1.1 ↑

**Southeast**  
R\_effective 1.0

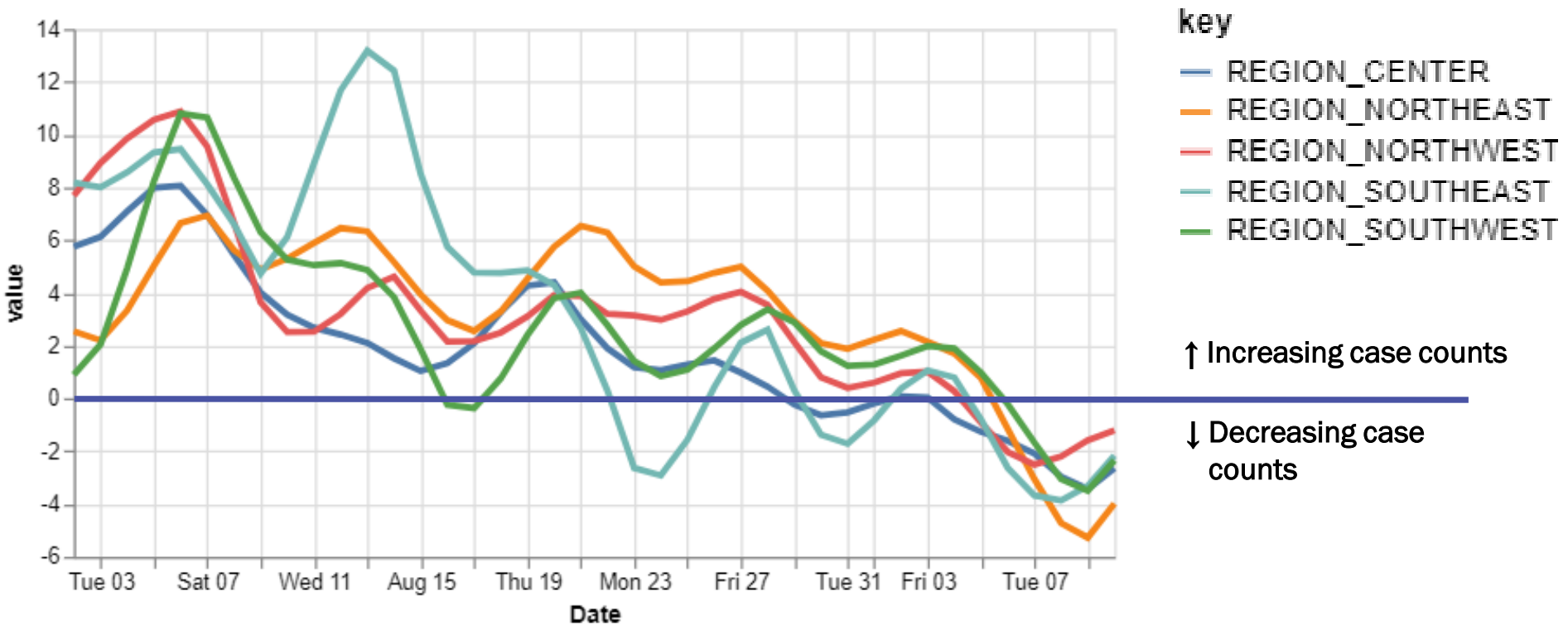


| Region    | R-effective | 95% Confidence Interval |
|-----------|-------------|-------------------------|
| State     | 0.9         | [0.6, 1.1]              |
| Metro     | 0.8         | [0.4, 1.3]              |
| Northeast | 0.8         | [0.2, 1.6]              |
| Northwest | 0.9         | [0.2, 1.7]              |
| Southeast | 0.9         | [0.5, 1.3]              |
| Southwest | 0.9         | [0.4, 1.5]              |

Courtesy of Presbyterian Healthcare Services – September 10, 2021.

# All regions have relative growth rates lower than 0.

## 14-day relative growth rate (%), Regions



key

- REGION\_CENTER
- REGION\_NORTHEAST
- REGION\_NORTHWEST
- REGION\_SOUTHEAST
- REGION\_SOUTHWEST

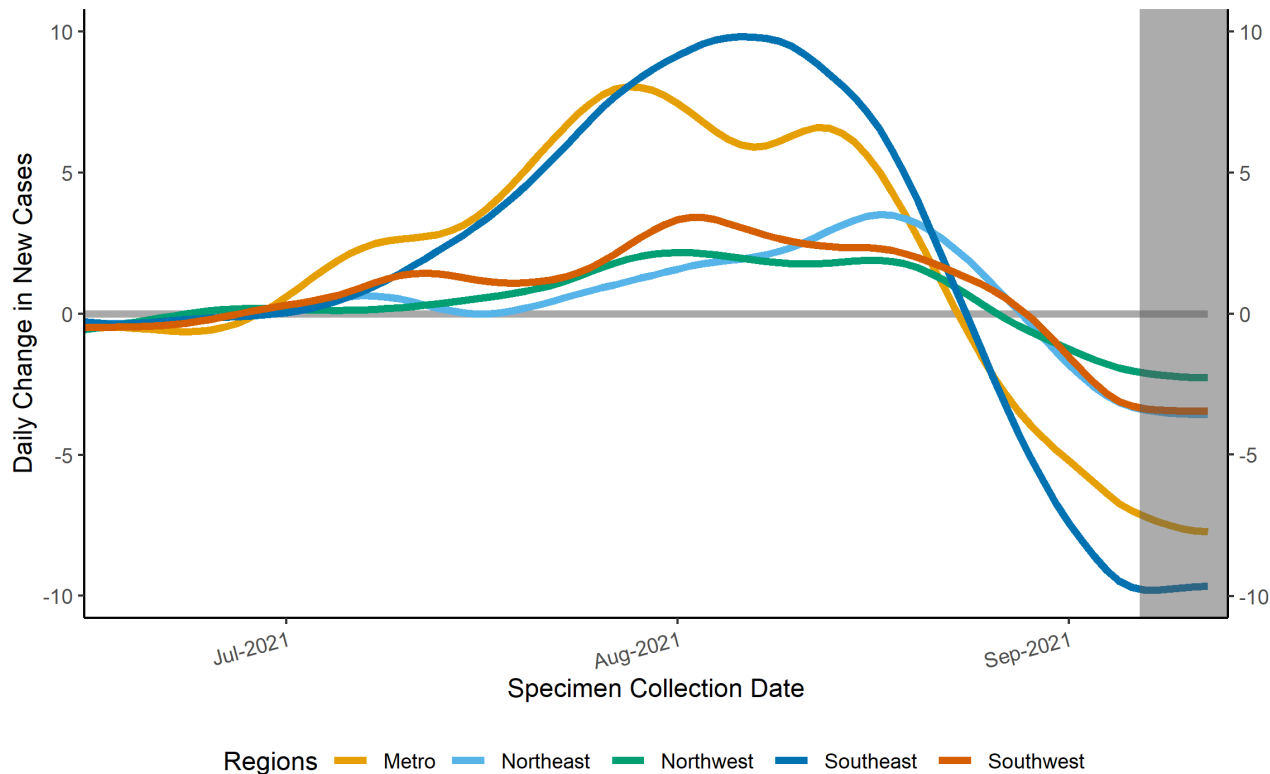
↑ Increasing case counts

↓ Decreasing case counts

Courtesy of Presbyterian Healthcare Services – September 10, 2021.

# Epidemic Growth Acceleration

Daily Change in New COVID-19 Cases, by New Mexico Region, as of September 13, 2021



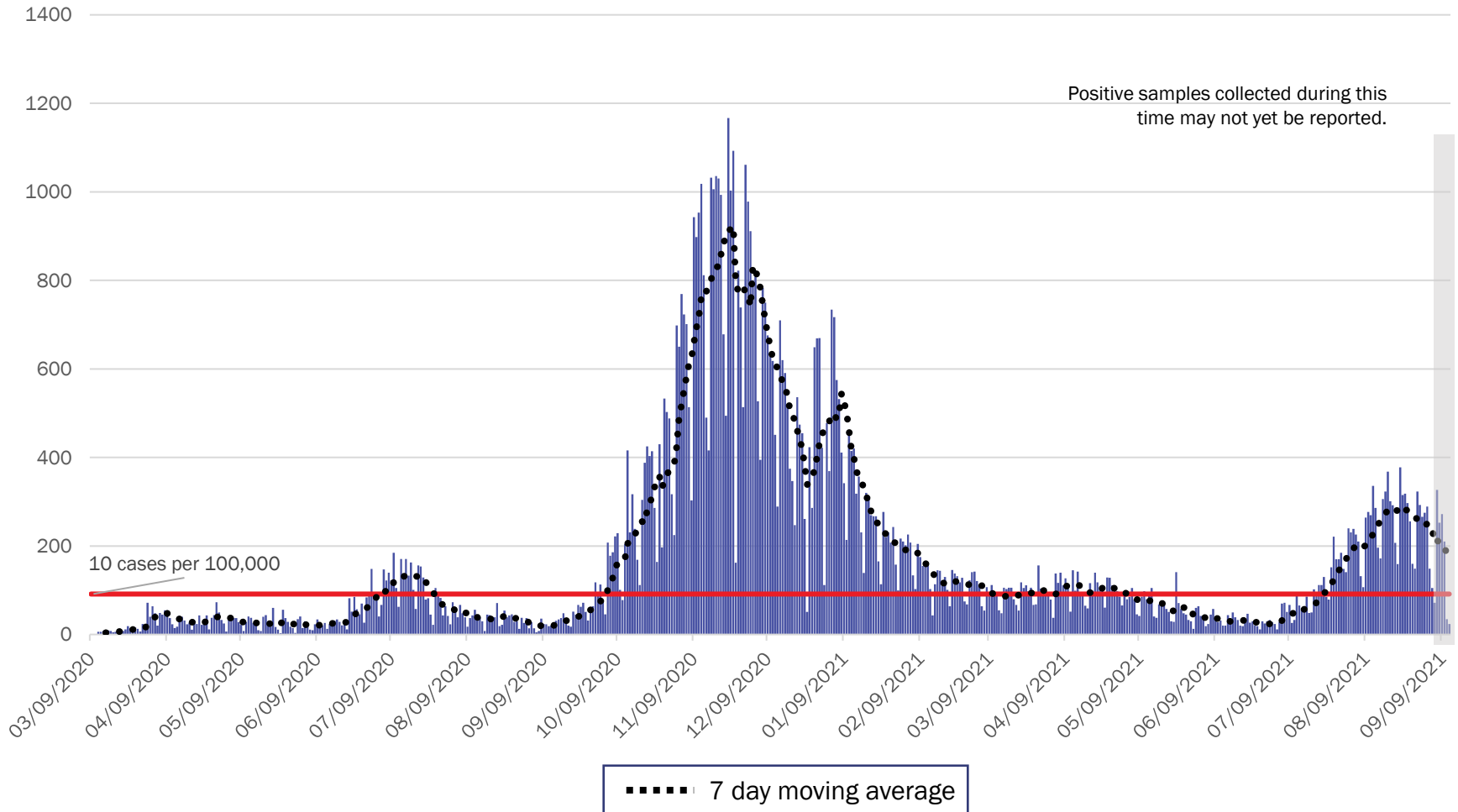
| Region      | Growth Acceleration September 06, 2021 |
|-------------|--|
| 1 Metro     | -7.0                                   |
| 2 Northeast | -3.3                                   |
| 3 Northwest | -2.0                                   |
| 4 Southeast | -9.7                                   |
| 5 Southwest | -3.3                                   |

\*Positive specimens collected in the last 7 or more days may not yet be reported to NMDOH. Case counts and growth acceleration during this time are underestimated.

Source: Infectious Disease Epidemiology Bureau, Epidemiology and Response Division 9.13.2021, New Mexico Department of Health.



# Metro Region Case Count by Collection Date with 7 Day Moving Average September 13, 2021



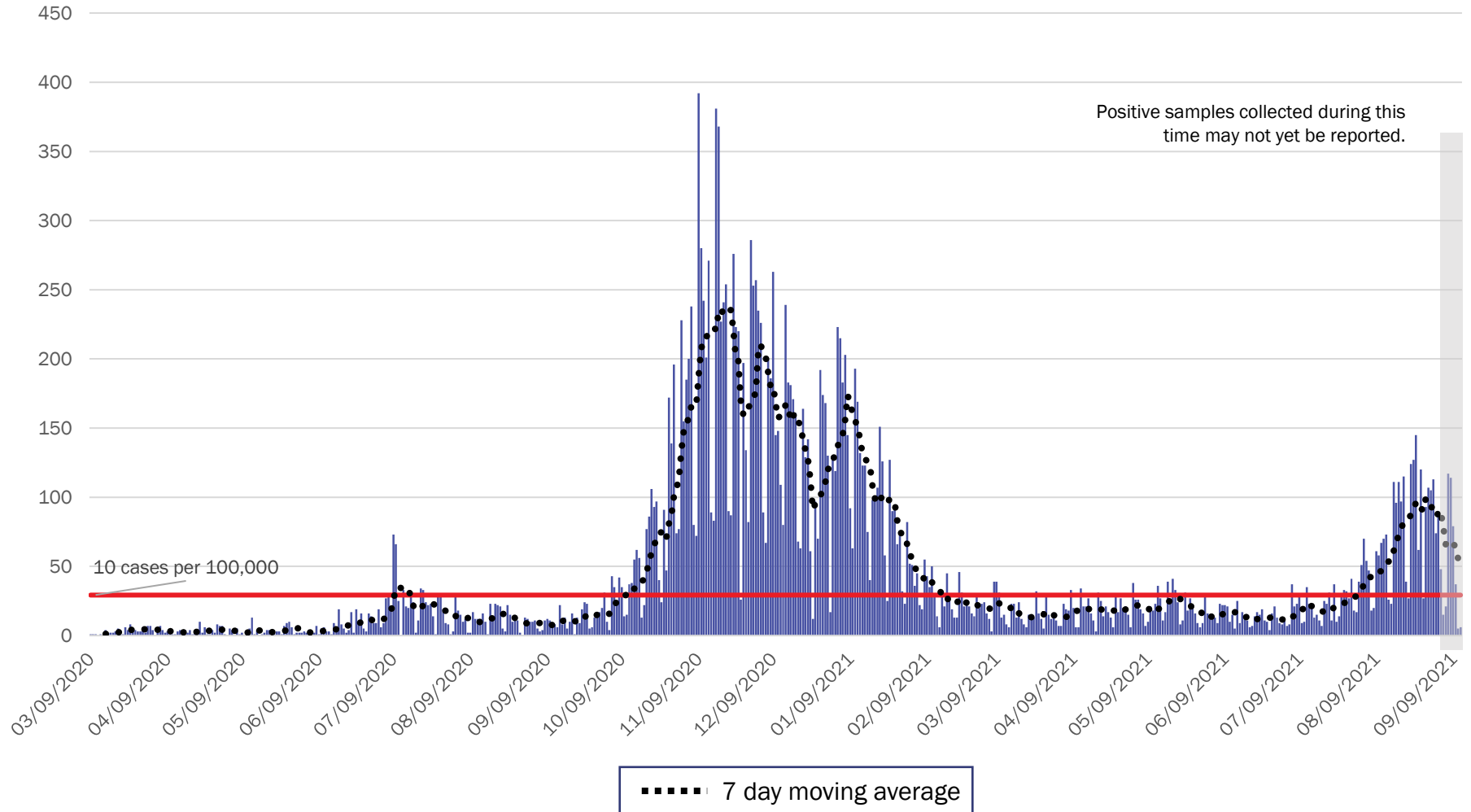
Source: Infectious Disease Epidemiology Bureau, Epidemiology and Response Division 9.13.2021, New Mexico Department of Health.



*Investing for tomorrow, delivering today.*

1190 S. St. Francis Drive • Santa Fe, NM 87505 • Phone: 505-827-2613 • Fax: 505-827-2530 • nmhealth.org

# Northeast Region Case Count by Collection Date with 7 Day Moving Average September 13, 2021



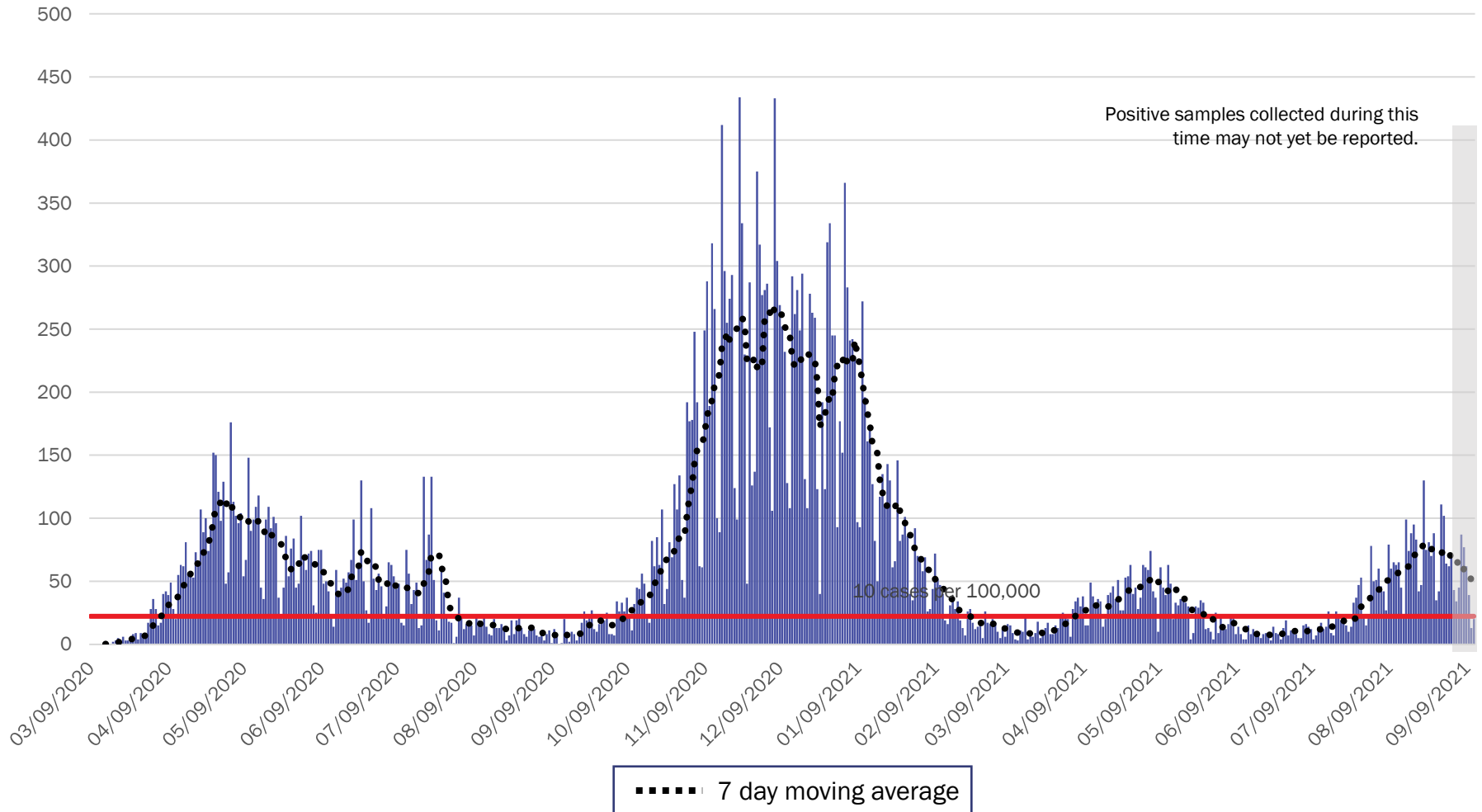
Source: Infectious Disease Epidemiology Bureau, Epidemiology and Response Division 9.13.2021, New Mexico Department of Health.



*Investing for tomorrow, delivering today.*

1190 S. St. Francis Drive • Santa Fe, NM 87505 • Phone: 505-827-2613 • Fax: 505-827-2530 • nmhealth.org

# Northwest Region Case Count by Collection Date with 7 Day Moving Average September 13, 2021



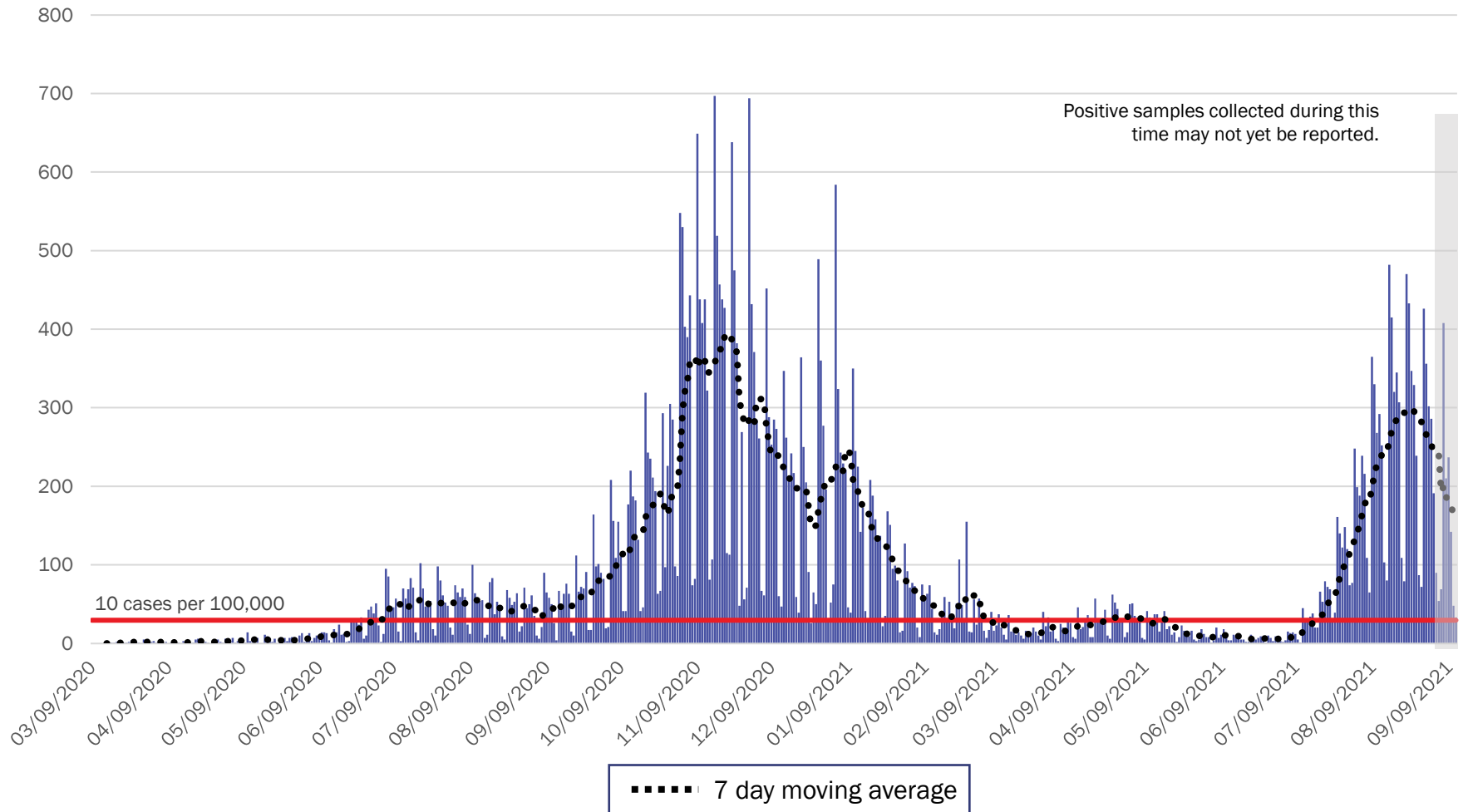
Source: Infectious Disease Epidemiology Bureau, Epidemiology and Response Division 9.13.2021, New Mexico Department of Health.



*Investing for tomorrow, delivering today.*

1190 S. St. Francis Drive • Santa Fe, NM 87505 • Phone: 505-827-2613 • Fax: 505-827-2530 • nmhealth.org

# Southeast Region Case Count by Collection Date with 7 Day Moving Average September 13, 2021



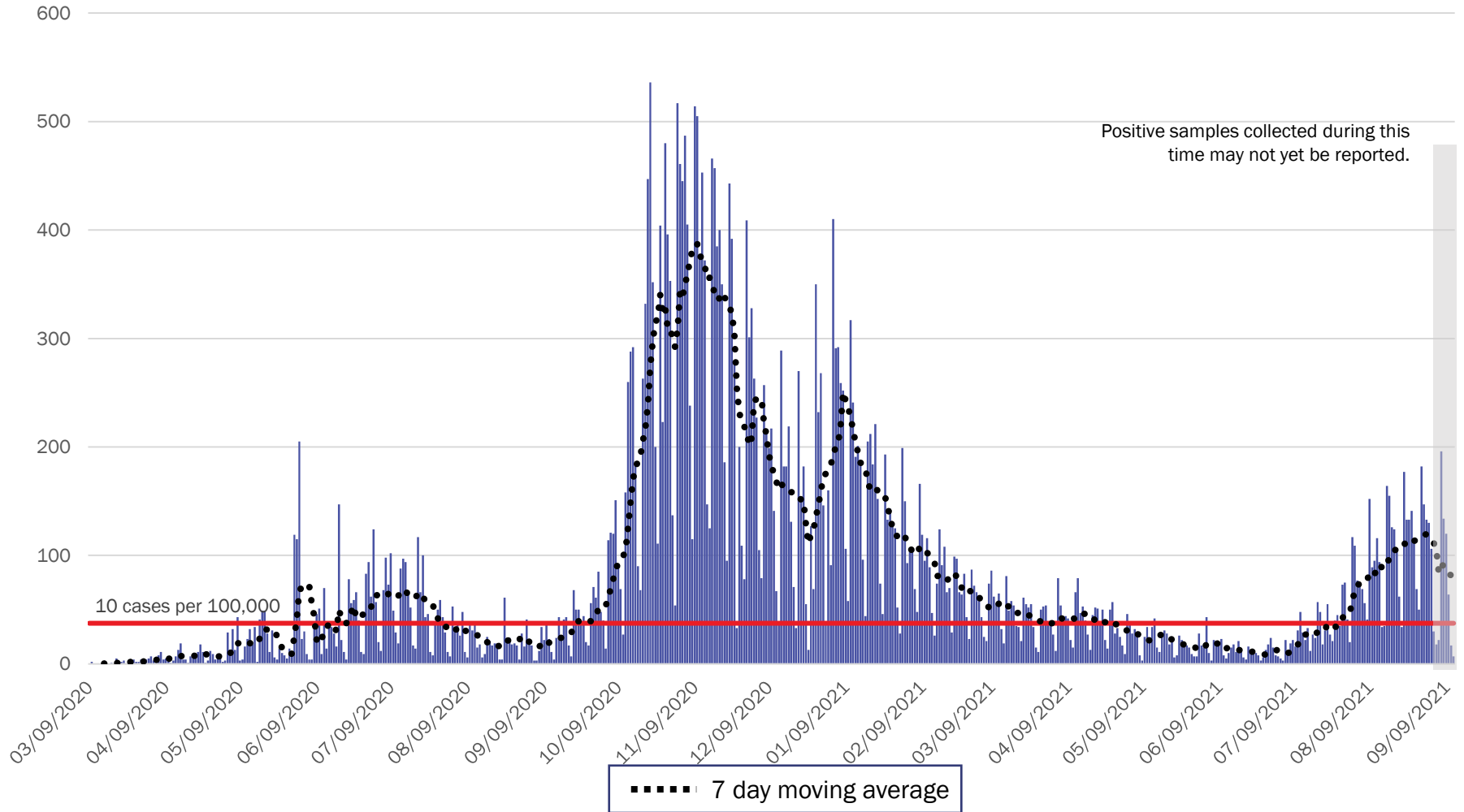
Source: Infectious Disease Epidemiology Bureau, Epidemiology and Response Division 9.13.2021, New Mexico Department of Health.



*Investing for tomorrow, delivering today.*

1190 S. St. Francis Drive • Santa Fe, NM 87505 • Phone: 505-827-2613 • Fax: 505-827-2530 • nmhealth.org

# Southwest Region Case Count by Collection Date with 7 Day Moving Average September 13, 2021



Source: Infectious Disease Epidemiology Bureau, Epidemiology and Response Division 9.13.2021, New Mexico Department of Health.



*Investing for tomorrow, delivering today.*



1190 S. St. Francis Drive • Santa Fe, NM 87505 • Phone: 505-827-2613 • Fax: 505-827-2530 • nmhealth.org

# New Mexico Status Updates

- Case count: Statewide, daily case counts are decreasing.
- Hospitalizations: COVID-19 hospitalizations are decreasing.
- Deaths: COVID-19 deaths are decreasing.

For more information, please visit the [Epidemiology Reports](https://cv.nmhealth.org/epidemiology-reports/) page on the NMDOH COVID-19 website: <https://cv.nmhealth.org/epidemiology-reports/>