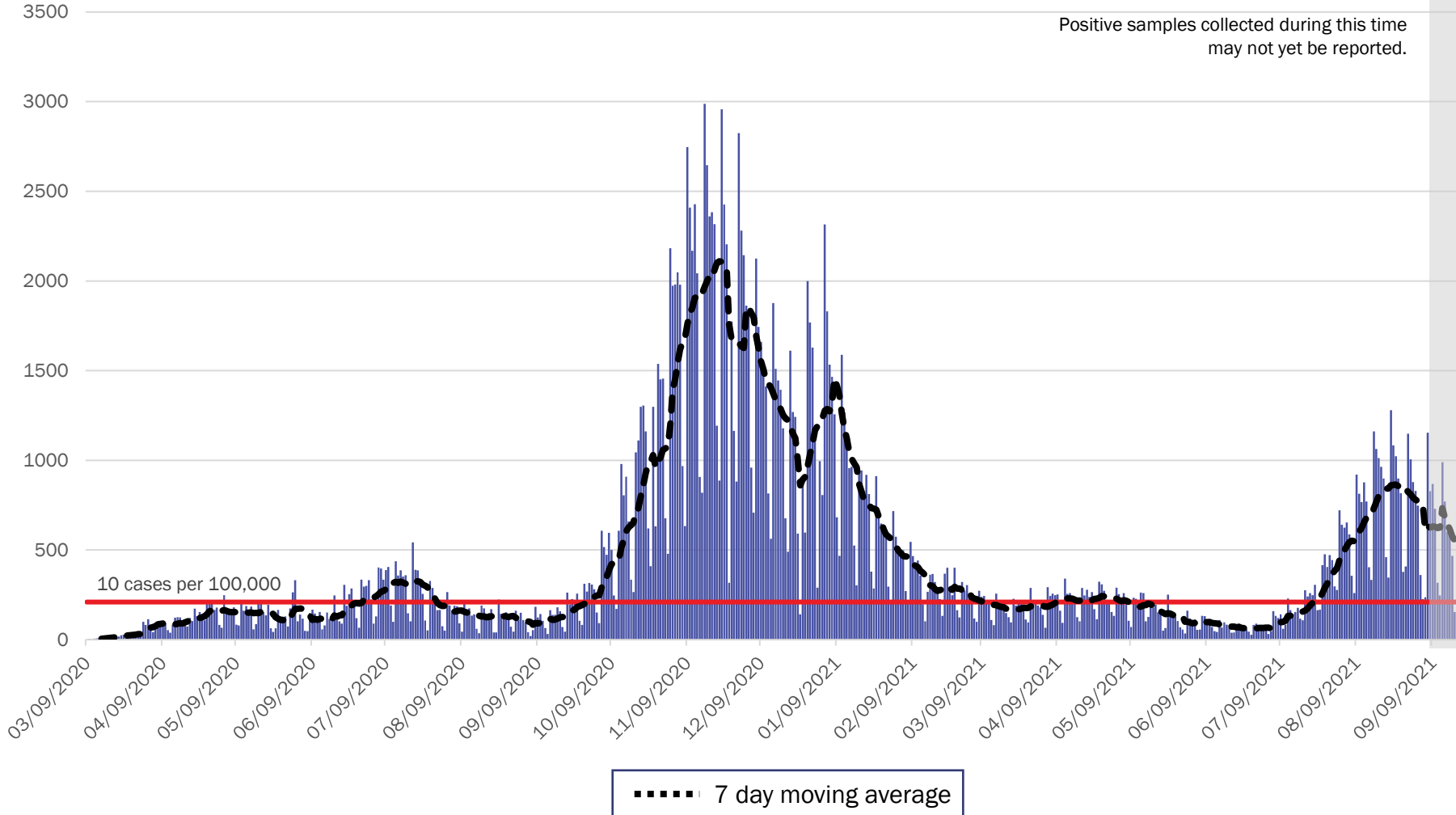


# COVID-19 in New Mexico: Epidemiologic and Modeling Update

September 21, 2021

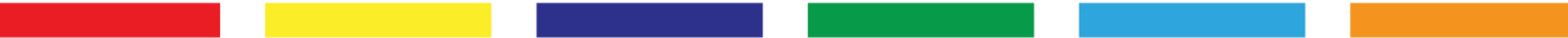
# New Mexico COVID-19 Cases by Date of Specimen Collection September 20, 2021



Source: Infectious Disease Epidemiology Bureau, Epidemiology and Response Division 9.20.2021, New Mexico Department of Health.



*Investing for tomorrow, delivering today.*

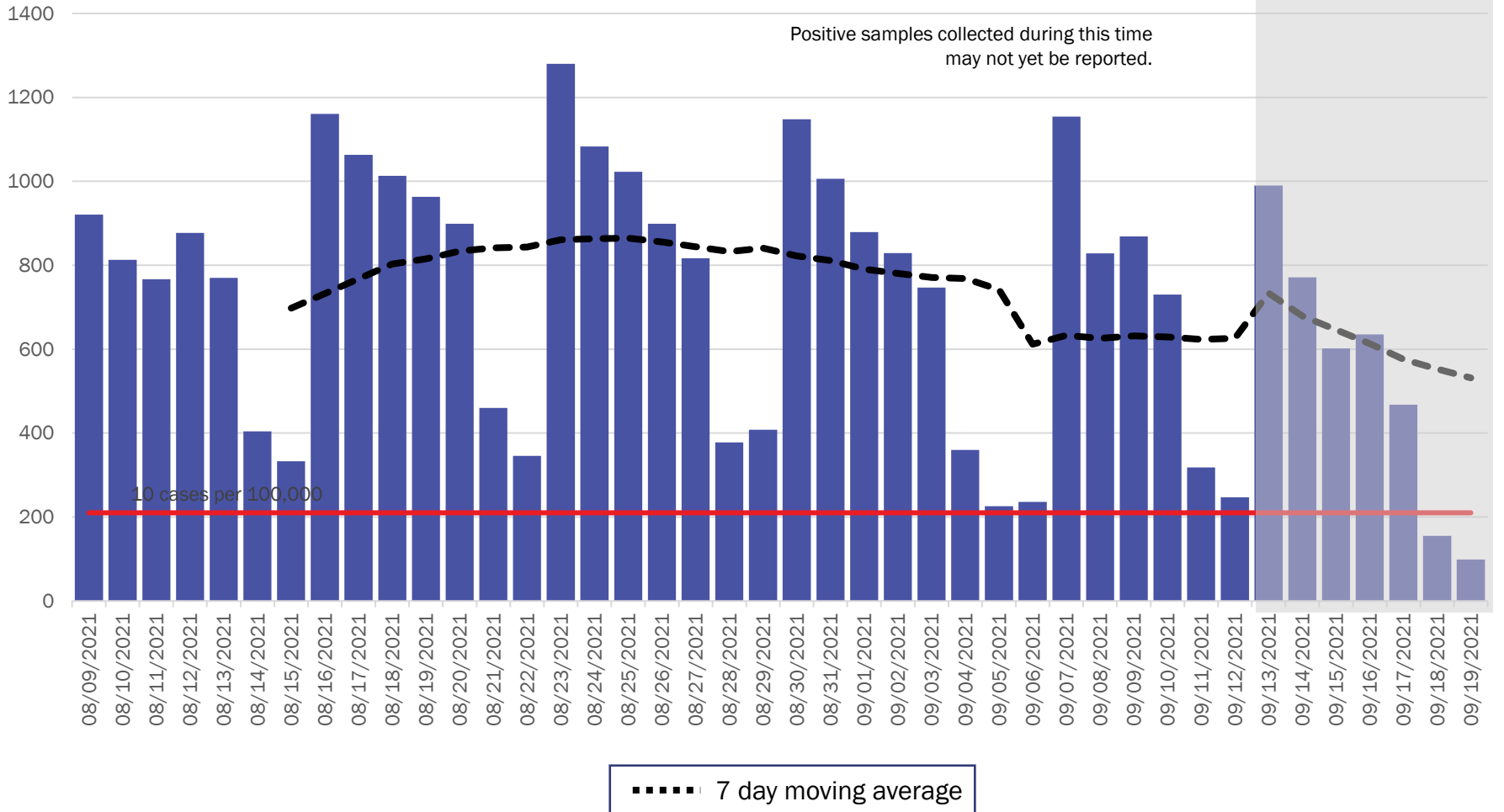


1190 S. St. Francis Drive • Santa Fe, NM 87505 • Phone: 505-827-2613 • Fax: 505-827-2530 • nmhealth.org

# New Mexico COVID-19 Cases by Date of Specimen Collection

## Recent 6 Week View

### September 20, 2021



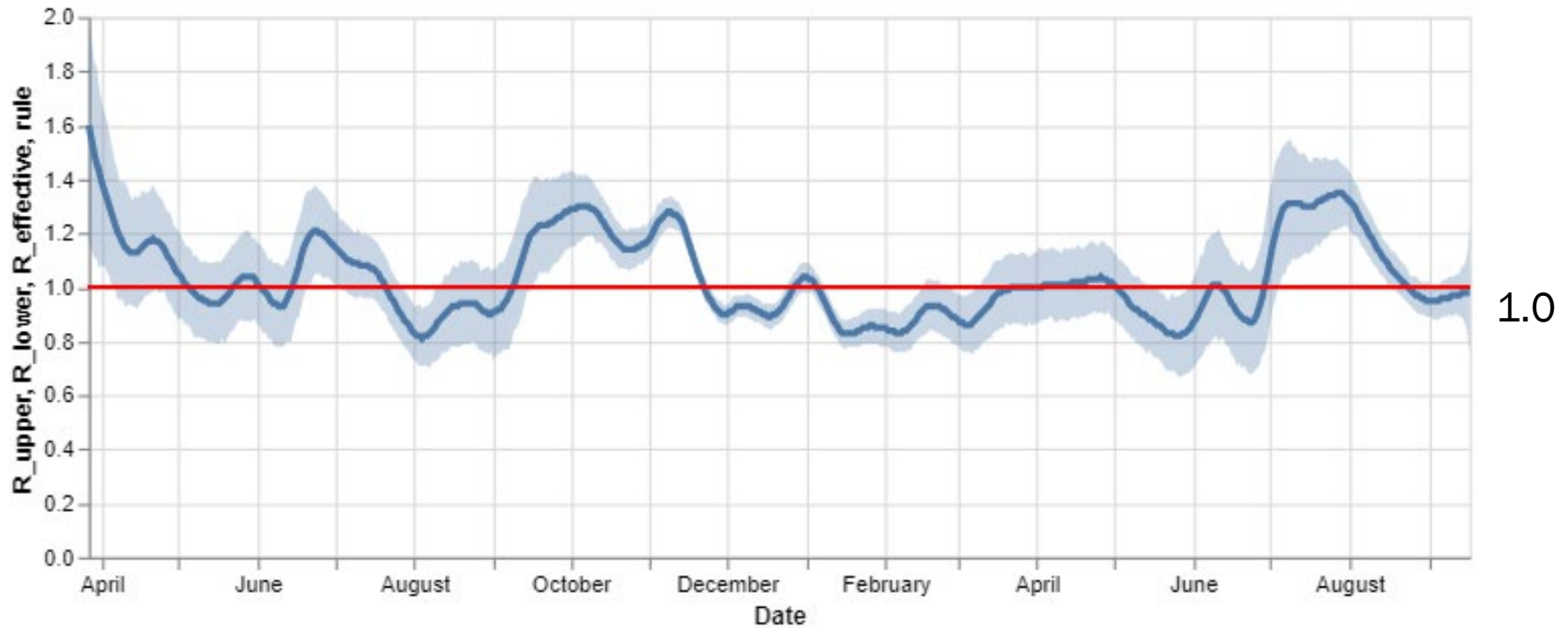
Source: Infectious Disease Epidemiology Bureau, Epidemiology and Response Division 9.20.2021, New Mexico Department of Health.



*Investing for tomorrow, delivering today.*

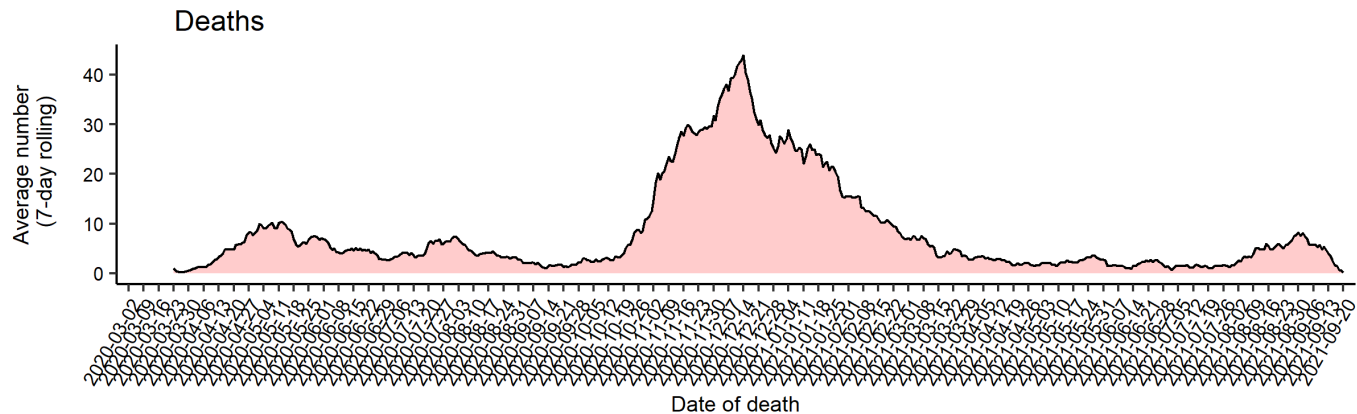
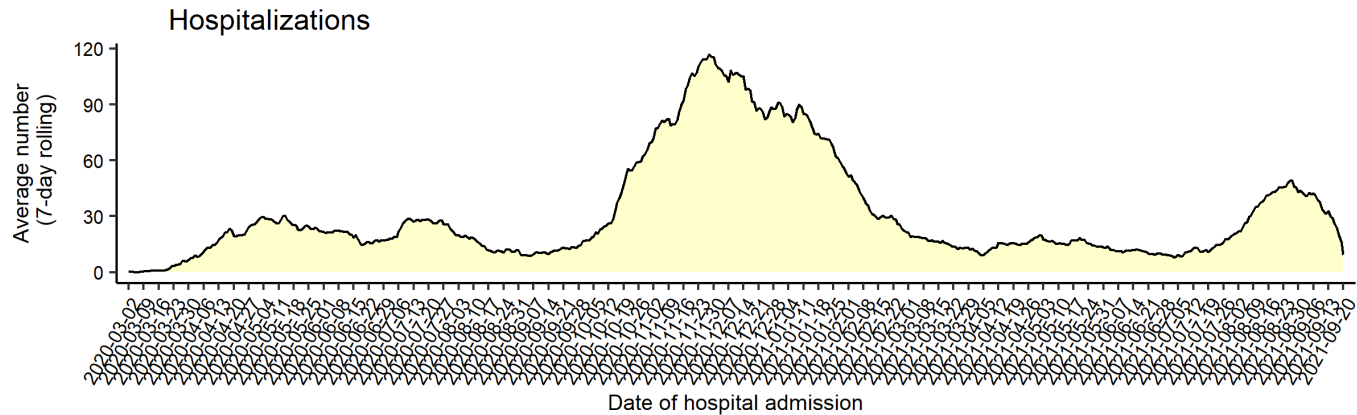
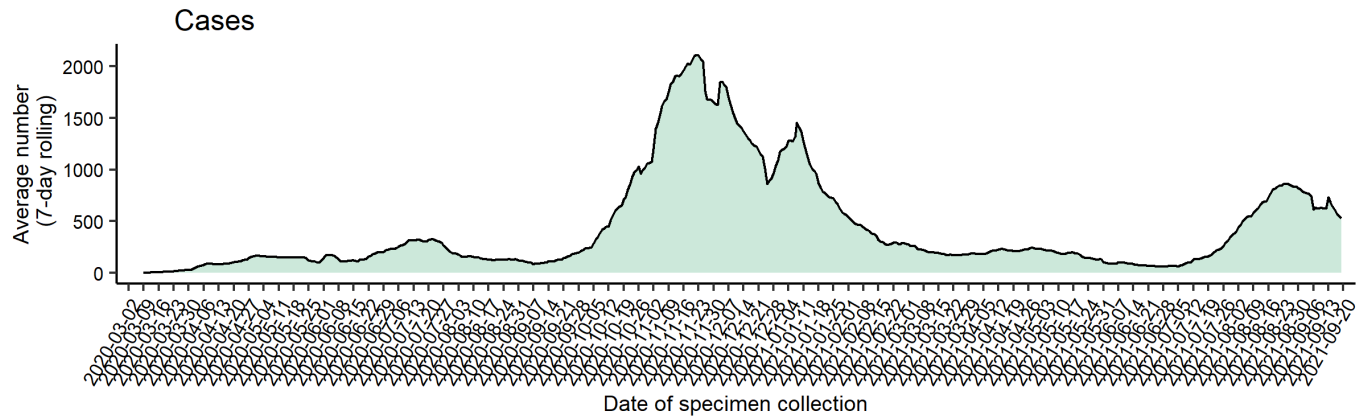


# Statewide R-effective has decreased to 1.0



Courtesy of Presbyterian Healthcare Services – September 17, 2021.

# Average number (7-day rolling average) of cases, hospitalizations, and deaths over time



*Note: Cases, hospitalizations, and deaths may not yet be reported in 7 or more days.*

*As of 9/20/21*



**Key**

↓ Low Level  
Endemic <1.0

Approaching Low  
Level Endemic  
1.0

↑ Requiring  
further mitigation  
>1.0

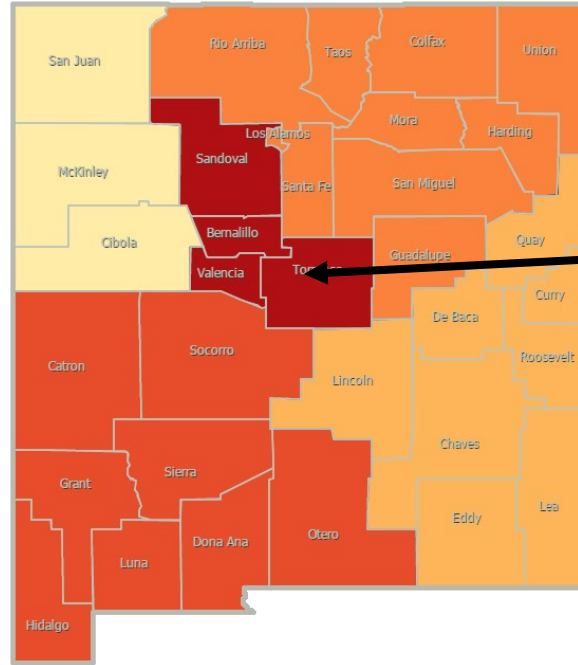
**Northwest**  
**R<sub>effective</sub> 1.0**

**Northeast**  
**R<sub>effective</sub> 0.8 ↓**

**Metro**  
**R<sub>effective</sub> 1.0**

**Southwest**  
**R<sub>effective</sub> 1.0**

**Southeast**  
**R<sub>effective</sub> 1.0**



As of September 3, 2021

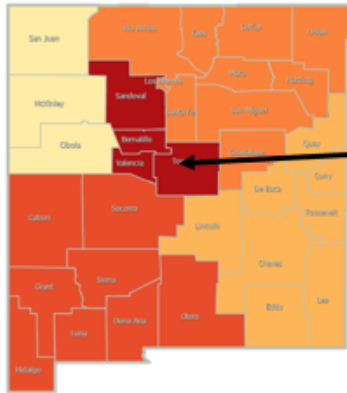
**Northwest**  
**R<sub>effective</sub> 1.0**

**Northeast**  
**R<sub>effective</sub> 0.8 ↓**

**Metro**  
**R<sub>effective</sub> 0.8 ↓**

**Southwest**  
**R<sub>effective</sub> 0.9 ↓**

**Southeast**  
**R<sub>effective</sub> 0.9 ↓**

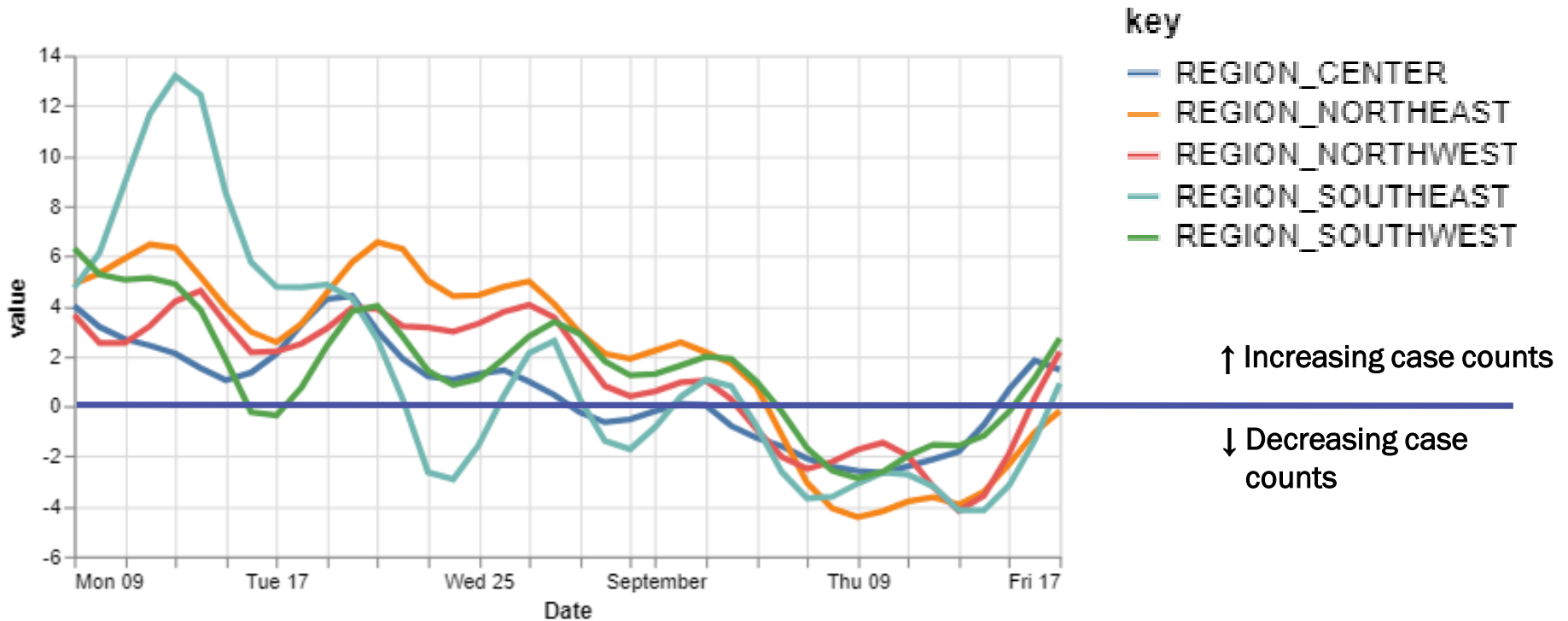


Region	R-effective	95% Confidence Interval
State	1.0	[0.8, 1.2]
Metro	1.0	[0.6, 1.5]
Northeast	0.8	[0.2, 1.7]
Northwest	1.0	[0.2, 1.9]
Southeast	1.0	[0.5, 1.4]
Southwest	1.0	[0.4, 1.7]

Courtesy of Presbyterian Healthcare Services – September 17, 2021.

# Four of five regions have relative growth rates greater than 0.

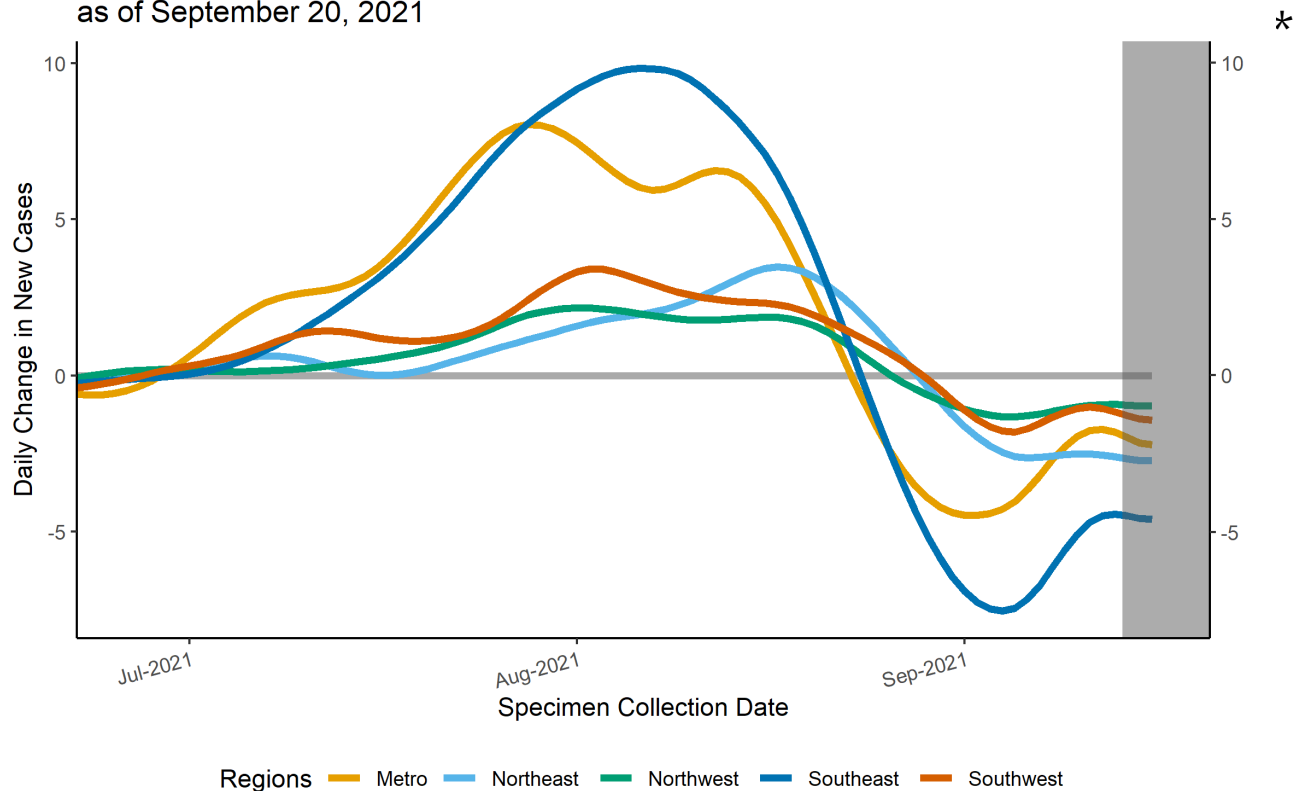
## 14-day relative growth rate (%), Regions



Courtesy of Presbyterian Healthcare Services – September 17, 2021.

# Epidemic Growth Acceleration

Daily Change in New COVID-19 Cases, by New Mexico Region, as of September 20, 2021



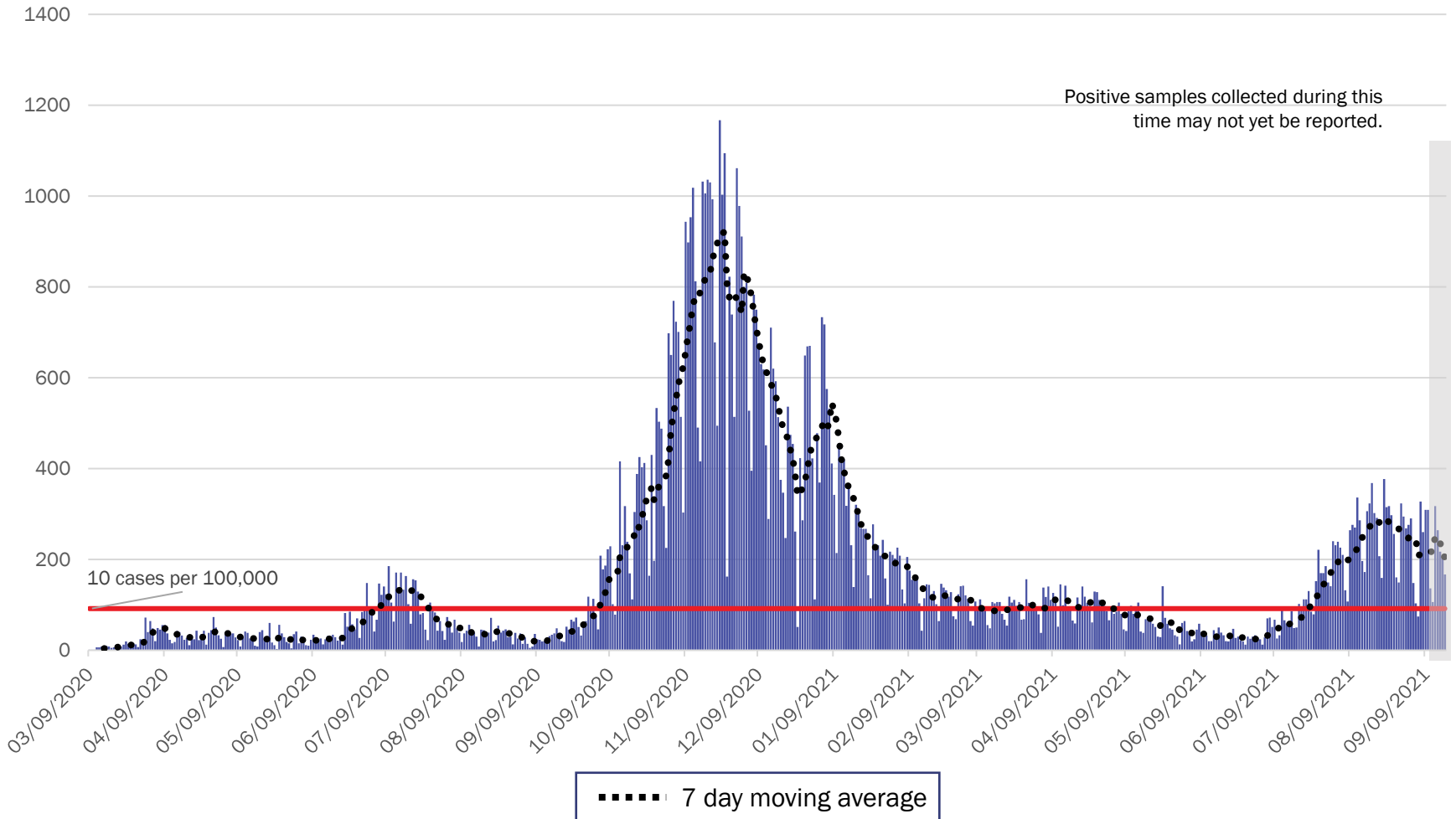
	Region	Growth Acceleration September 13, 2021
1	Metro	-1.8
2	Northeast	-2.6
3	Northwest	-0.9
4	Southeast	-4.4
5	Southwest	-1.2

\*Positive specimens collected in the last 7 or more days may not yet be reported to NMDOH. Case counts and growth acceleration during this time are underestimated.

Source: Infectious Disease Epidemiology Bureau, Epidemiology and Response Division 9.20.2021, New Mexico Department of Health.



# Metro Region Case Count by Collection Date with 7 Day Moving Average September 20, 2021



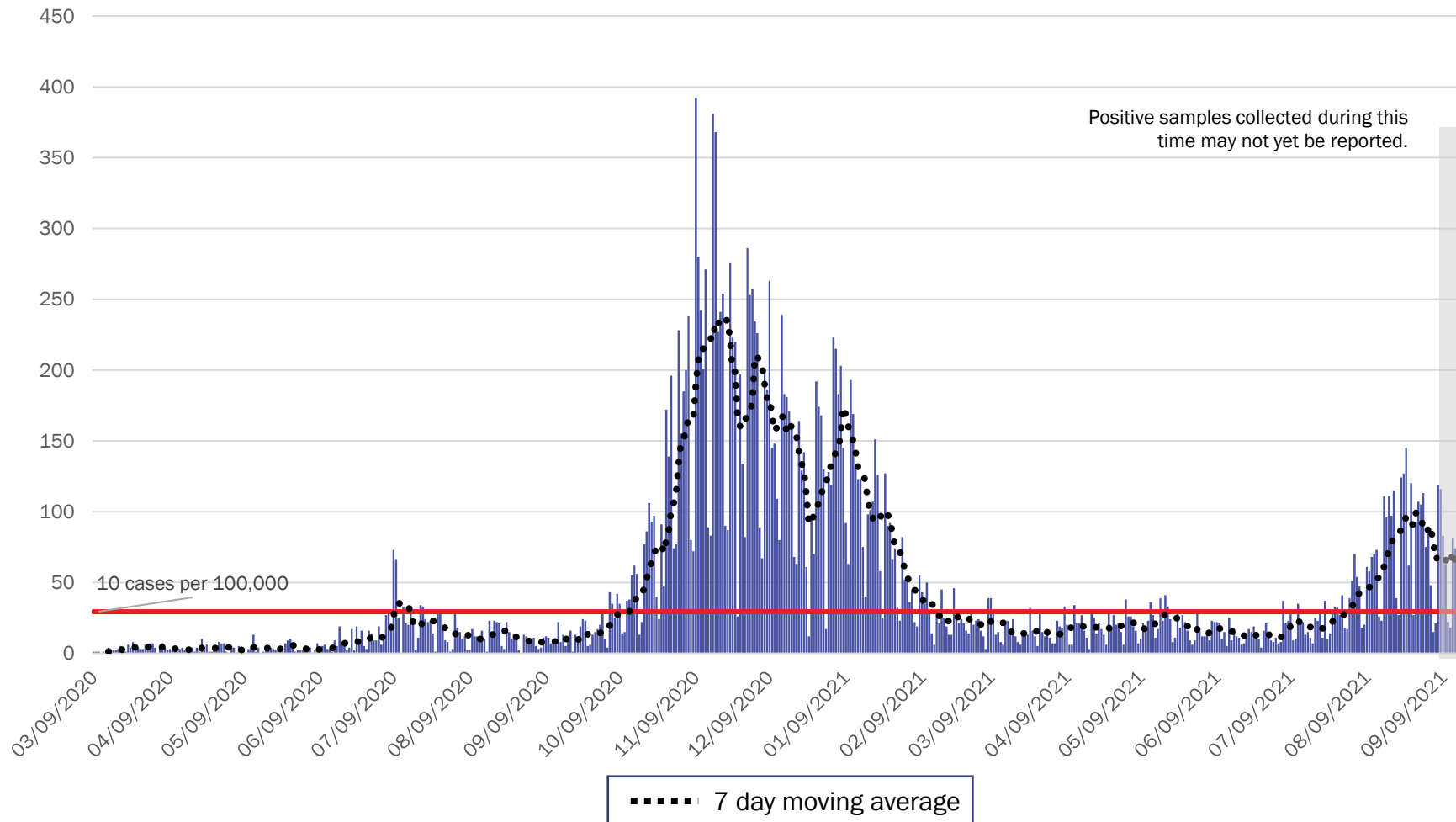
Source: Infectious Disease Epidemiology Bureau, Epidemiology and Response Division 9.20.2021, New Mexico Department of Health.



*Investing for tomorrow, delivering today.*

1190 S. St. Francis Drive • Santa Fe, NM 87505 • Phone: 505-827-2613 • Fax: 505-827-2530 • [nmhealth.org](http://nmhealth.org)

## Northeast Region Case Count by Collection Date with 7 Day Moving Average September 20, 2021



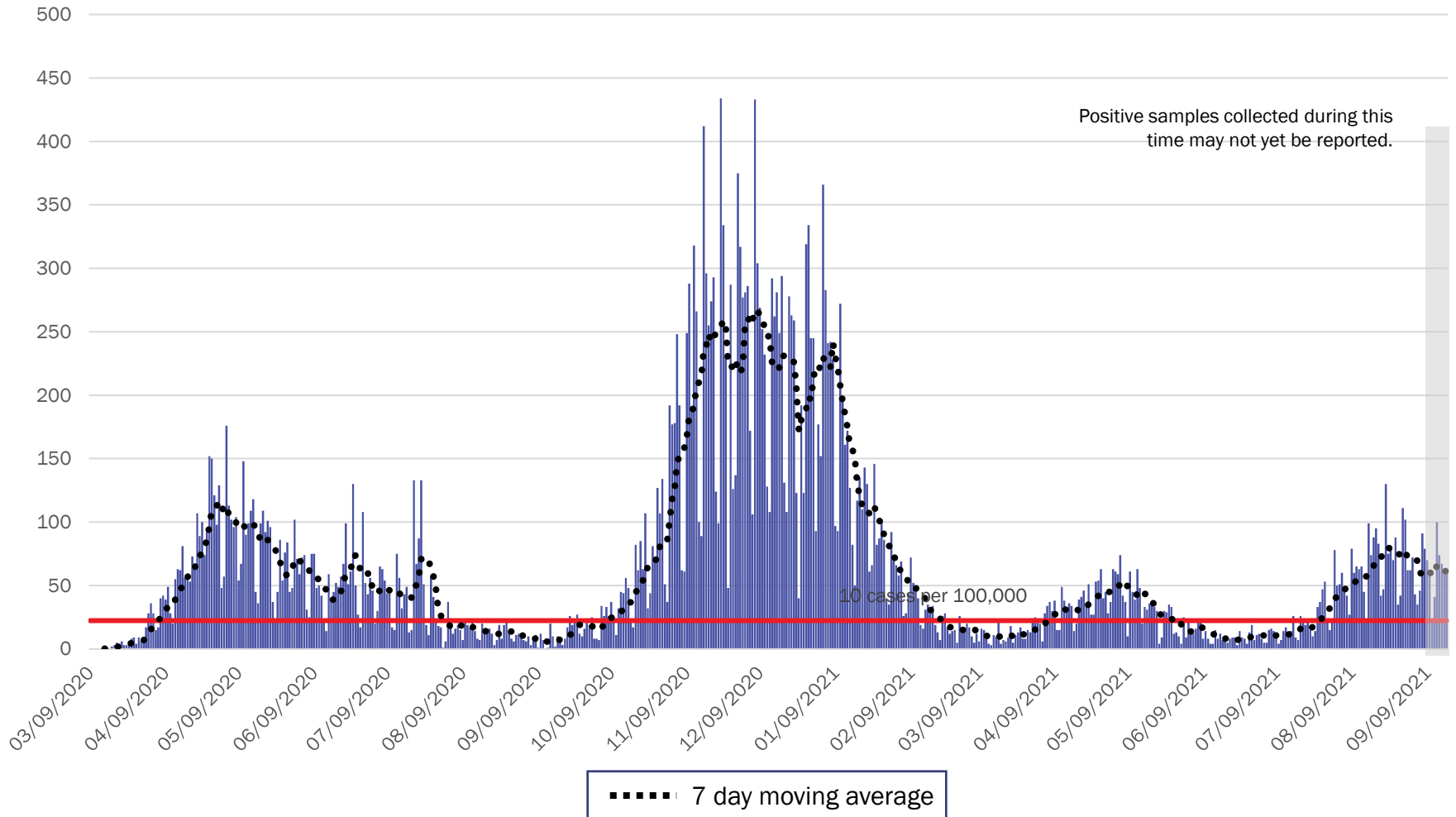
Source: Infectious Disease Epidemiology Bureau, Epidemiology and Response Division 9.20.2021, New Mexico Department of Health.



*Investing for tomorrow, delivering today.*

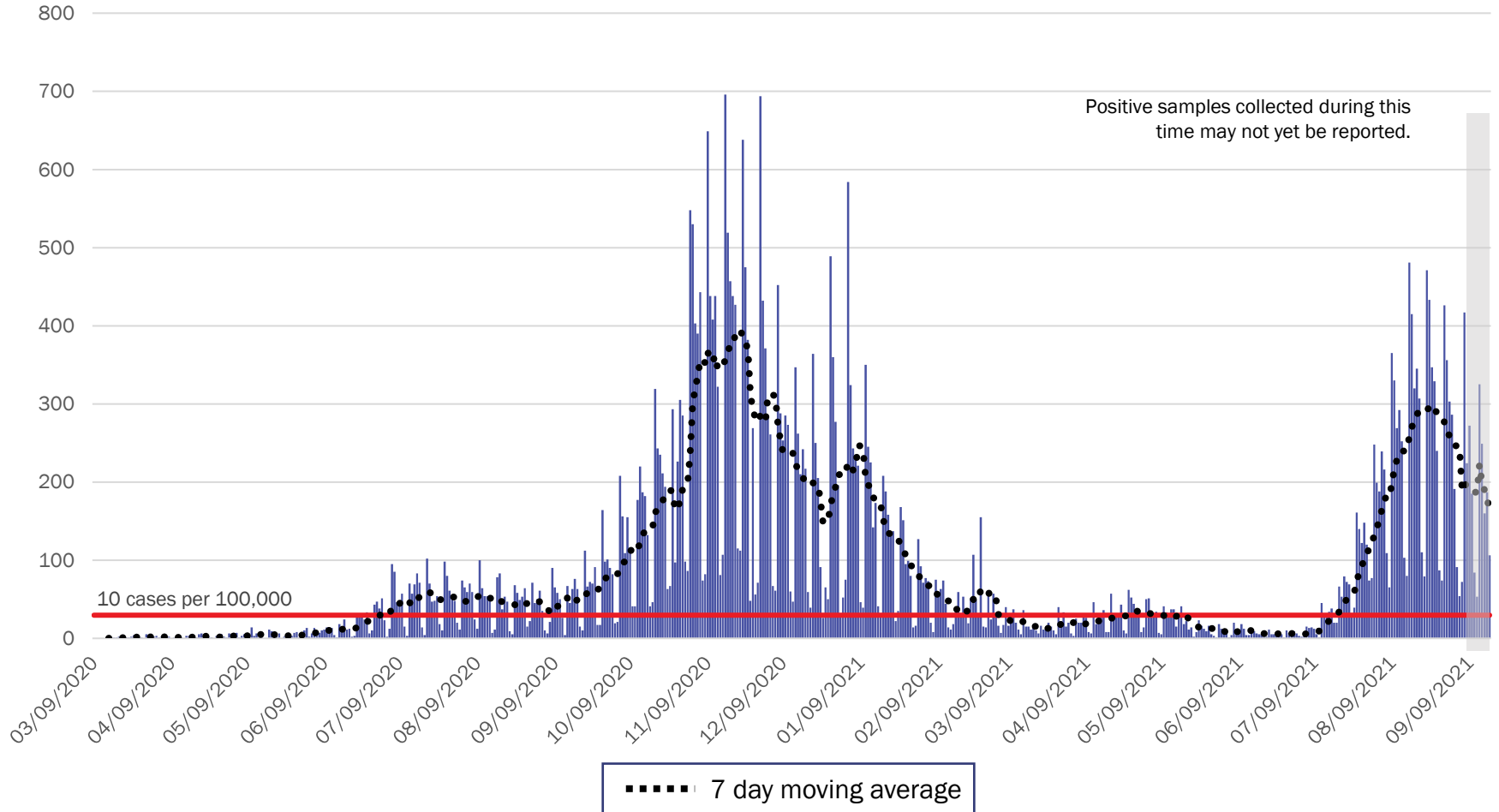
1190 S. St. Francis Drive • Santa Fe, NM 87505 • Phone: 505-827-2613 • Fax: 505-827-2530 • nmhealth.org

# Northwest Region Case Count by Collection Date with 7 Day Moving Average September 20, 2021



Source: Infectious Disease Epidemiology Bureau, Epidemiology and Response Division 9.20.2021, New Mexico Department of Health.

# Southeast Region Case Count by Collection Date with 7 Day Moving Average September 20, 2021



Source: Infectious Disease Epidemiology Bureau, Epidemiology and Response Division 9.20.2021, New Mexico Department of Health.

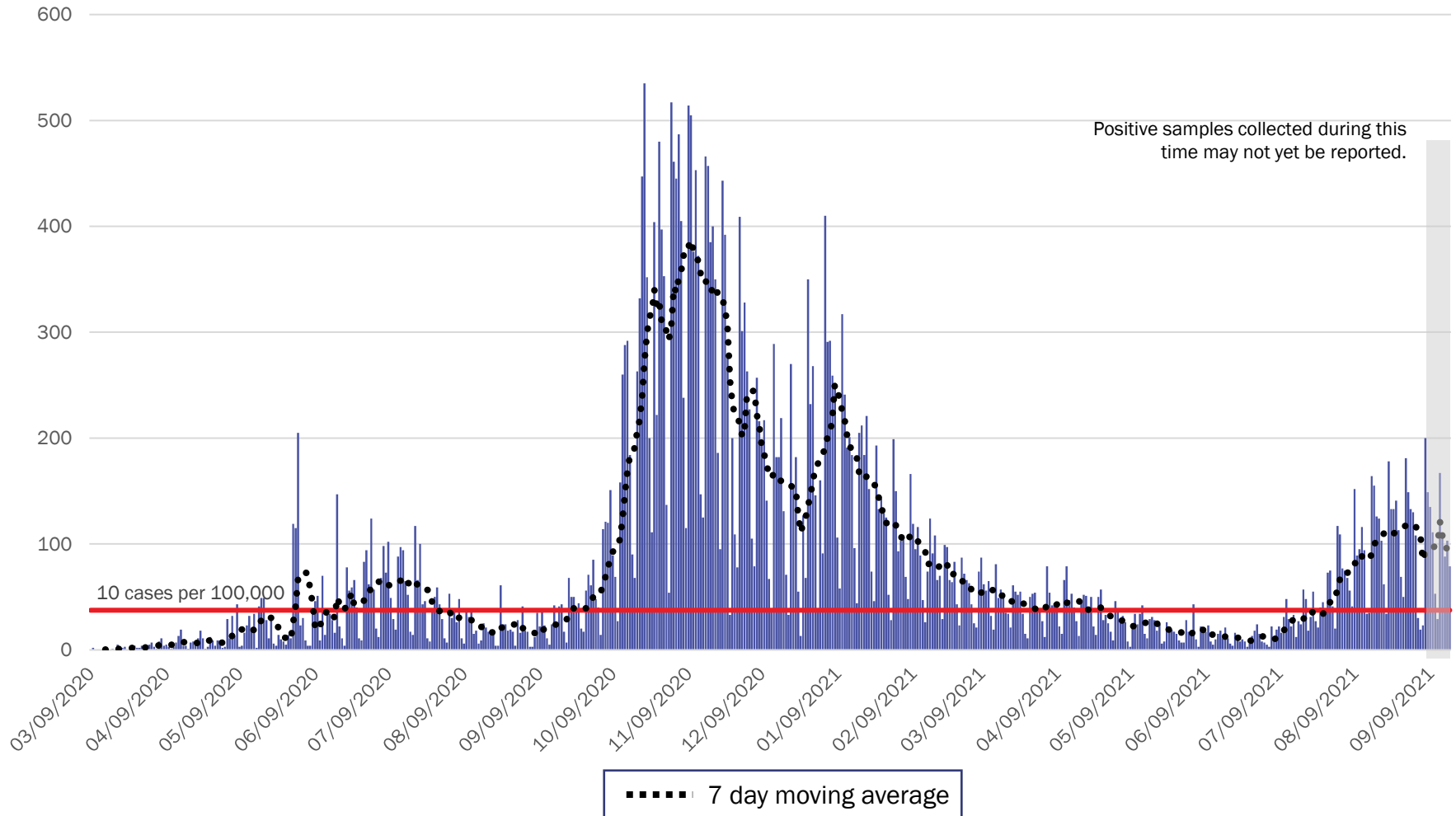


*Investing for tomorrow, delivering today.*



1190 S. St. Francis Drive • Santa Fe, NM 87505 • Phone: 505-827-2613 • Fax: 505-827-2530 • nmhealth.org

# Southwest Region Case Count by Collection Date with 7 Day Moving Average September 20, 2021



Source: Infectious Disease Epidemiology Bureau, Epidemiology and Response Division 9.20.2021, New Mexico Department of Health.



*Investing for tomorrow, delivering today.*



1190 S. St. Francis Drive • Santa Fe, NM 87505 • Phone: 505-827-2613 • Fax: 505-827-2530 • nmhealth.org

# New Mexico Status Updates

- Case count: Statewide, daily case counts are decreasing.
- Hospitalizations: COVID-19 hospitalizations are decreasing.
- Deaths: COVID-19 deaths are decreasing.

For more information, please visit the [Epidemiology Reports](https://cv.nmhealth.org/epidemiology-reports/) page on the NMDOH COVID-19 website: <https://cv.nmhealth.org/epidemiology-reports/>