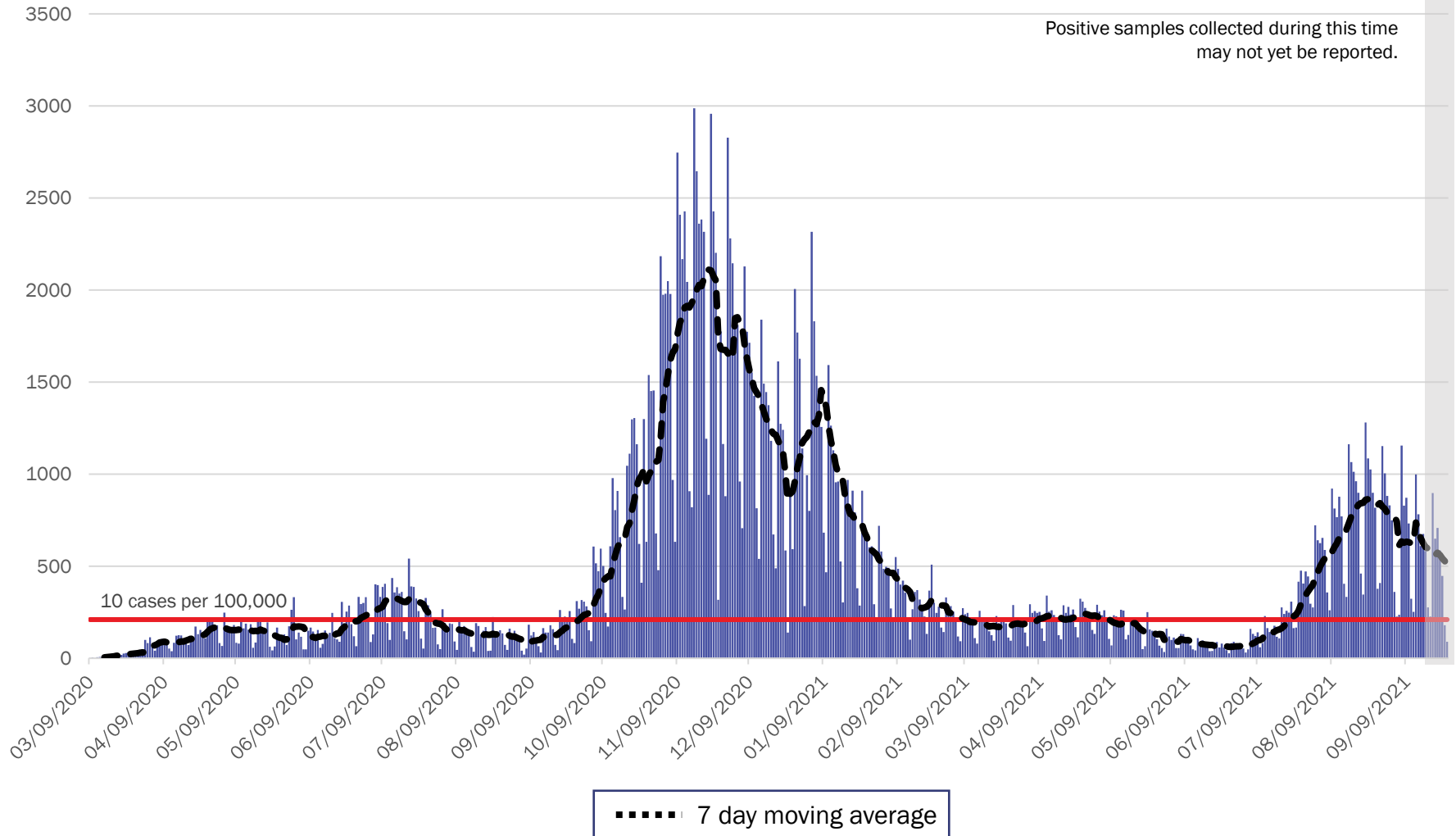


COVID-19 in New Mexico: Epidemiologic and Modeling Update

September 27, 2021

New Mexico COVID-19 Cases by Date of Specimen Collection September 27, 2021



Source: Infectious Disease Epidemiology Bureau, Epidemiology and Response Division 9.27.2021, New Mexico Department of Health.



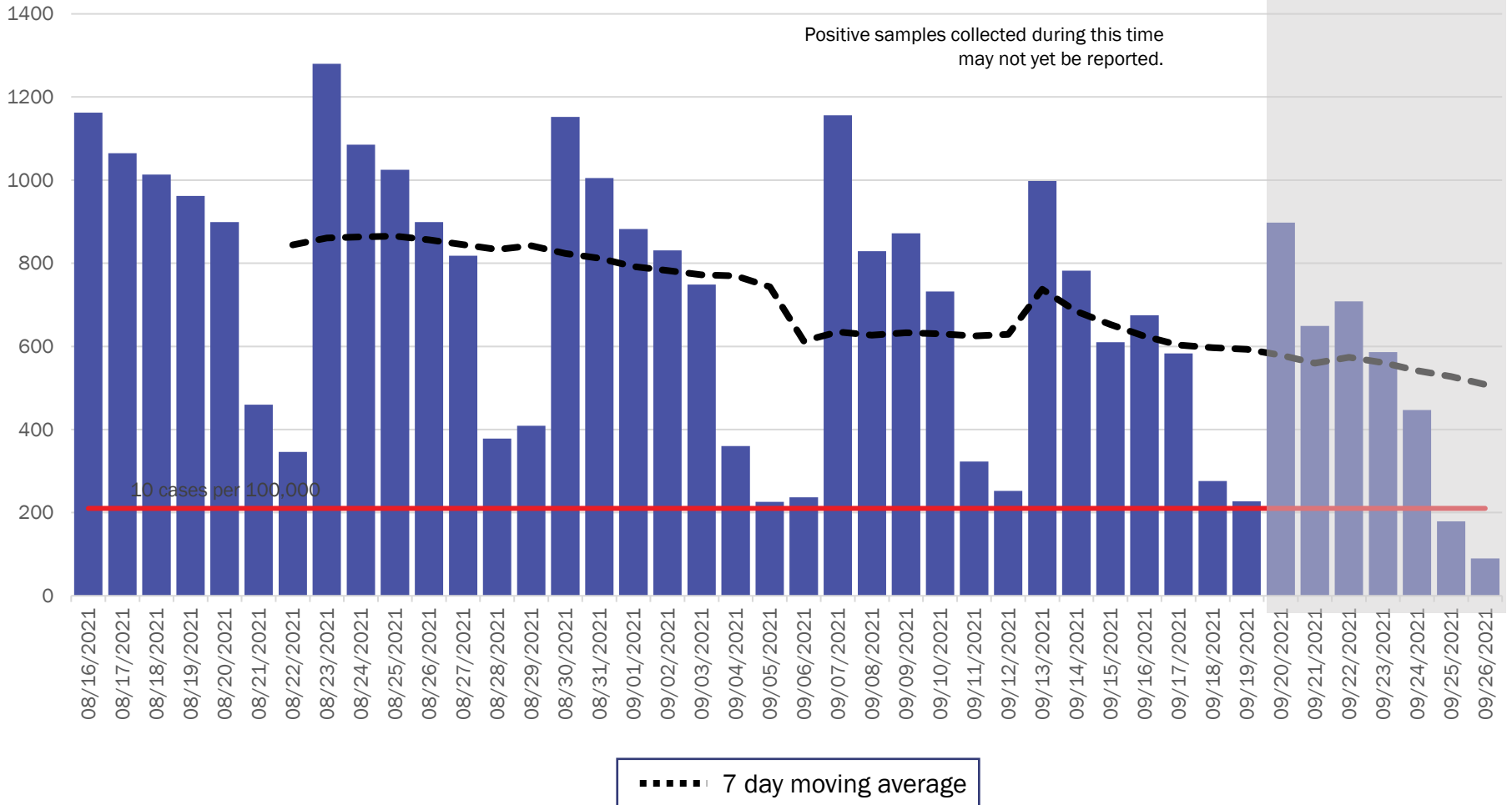
Investing for tomorrow, delivering today.

1190 S. St. Francis Drive • Santa Fe, NM 87505 • Phone: 505-827-2613 • Fax: 505-827-2530 • nmhealth.org

New Mexico COVID-19 Cases by Date of Specimen Collection

Recent 6 Week View

September 27, 2021



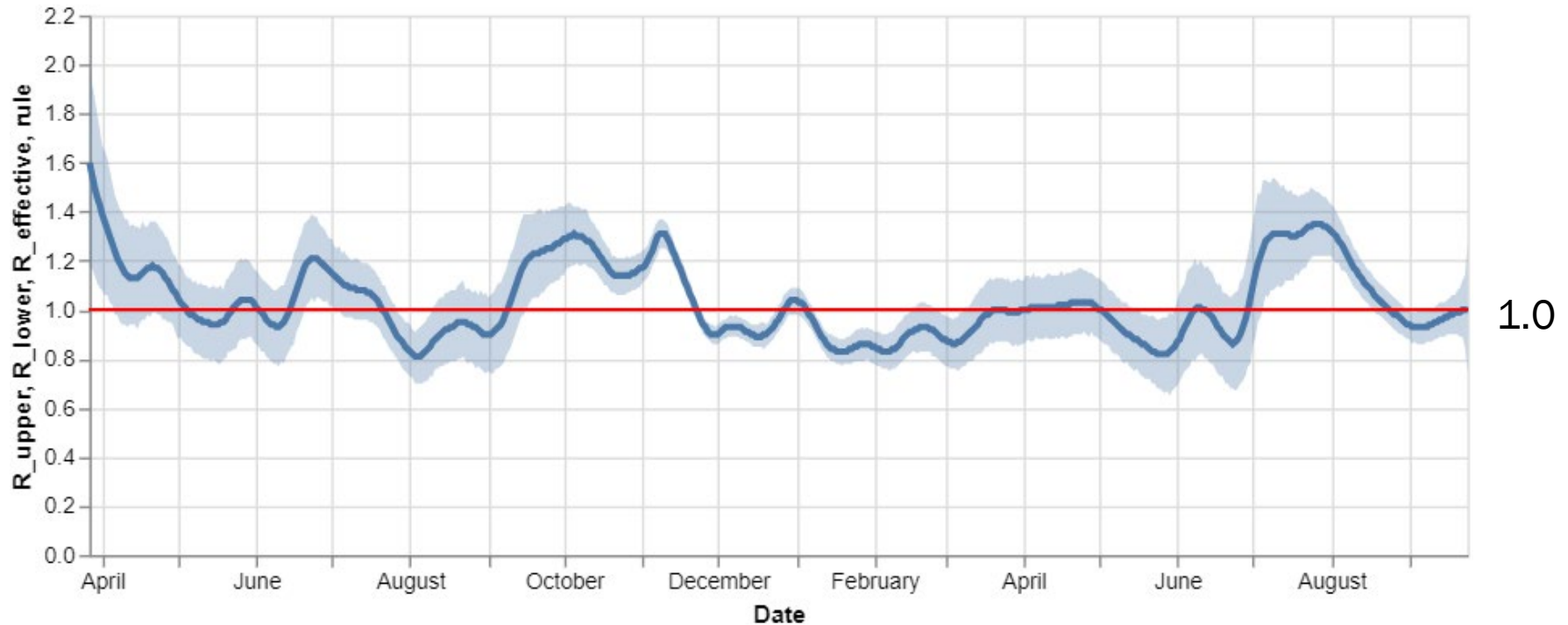
Source: Infectious Disease Epidemiology Bureau, Epidemiology and Response Division 9.27.2021, New Mexico Department of Health.



Investing for tomorrow, delivering today.

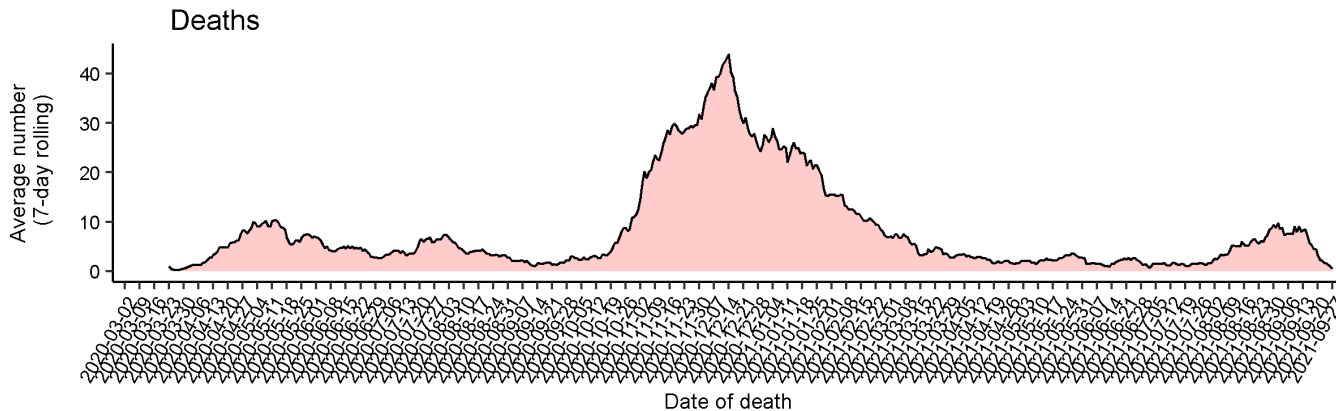
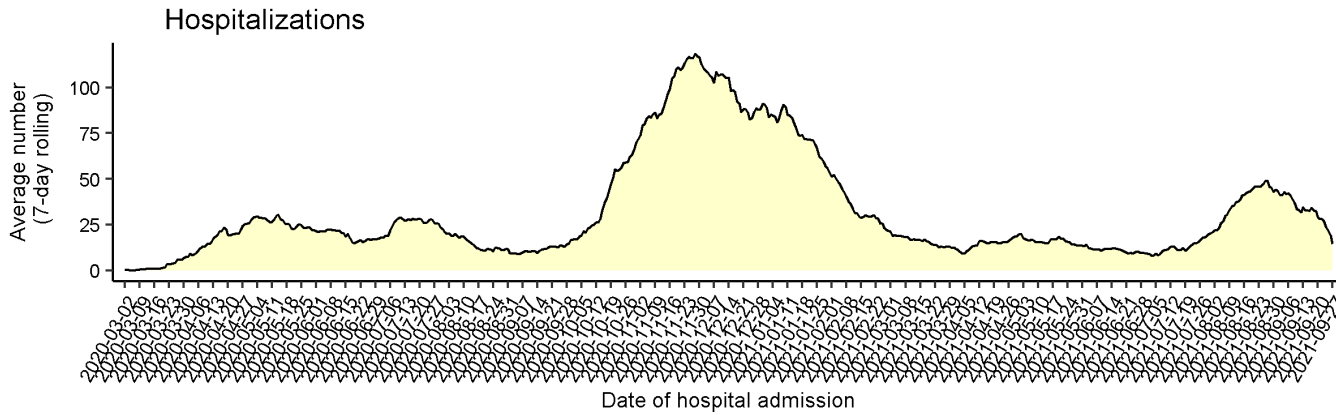
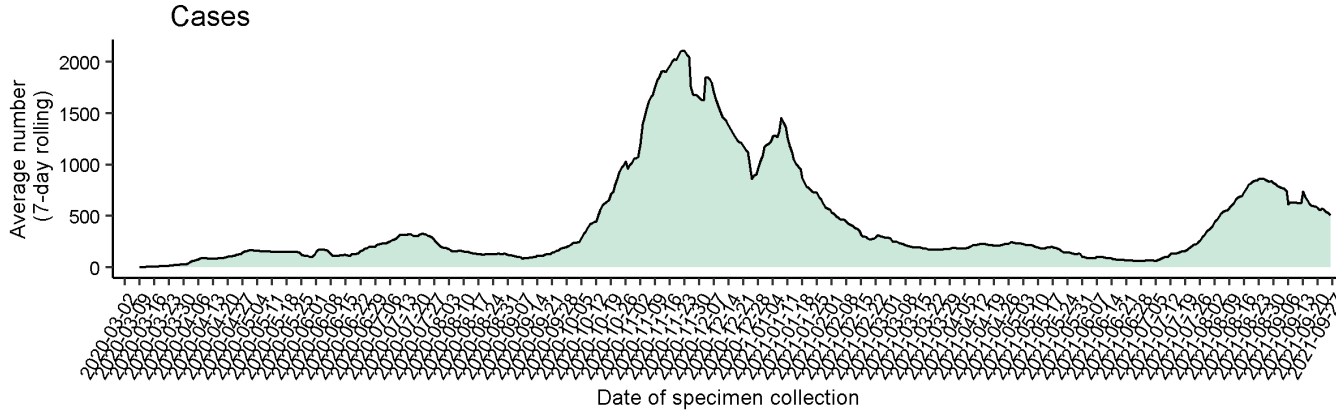
1190 S. St. Francis Drive • Santa Fe, NM 87505 • Phone: 505-827-2613 • Fax: 505-827-2530 • nmhealth.org

Statewide R-effective has remained at 1.0



Courtesy of Presbyterian Healthcare Services – September 24, 2021.

Average number (7-day rolling average) of cases, hospitalizations, and deaths over time



Note: Cases, hospitalizations, and deaths may not yet be reported in 7 or more days.

As of 9/27/21



Key

↓ Low Level Endemic <1.0

Approaching Low Level Endemic 1.0

↑ Requiring further mitigation >1.0

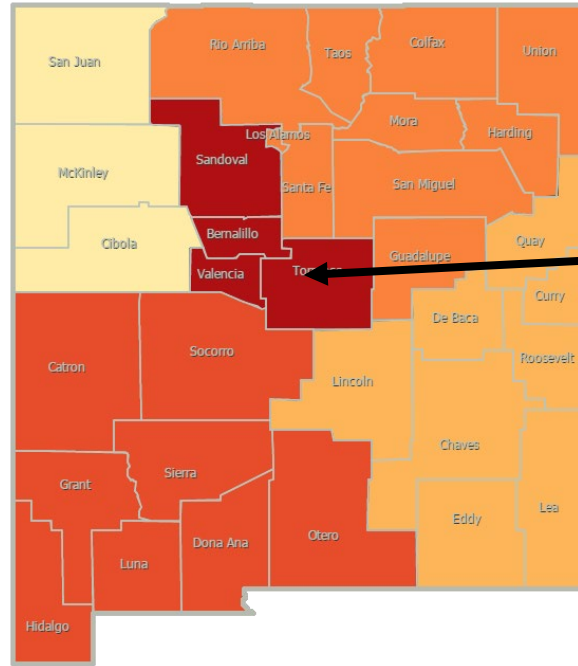
Northwest
R_effective 1.1 ↑

Northeast
R_effective 1.0

Metro
R_effective 1.1 ↑

Southwest
R_effective 1.0

Southeast
R_effective 0.9 ↓



As of September 17, 2021

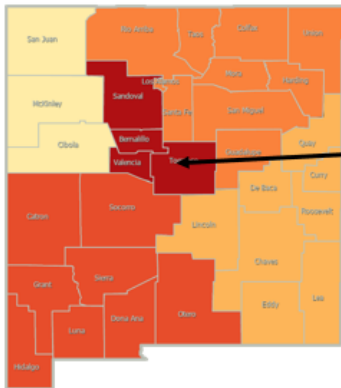
Northwest
R_effective 1.0

Northeast
R_effective 0.8 ↓

Metro
R_effective 1.0

Southwest
R_effective 1.0

Southeast
R_effective 1.0

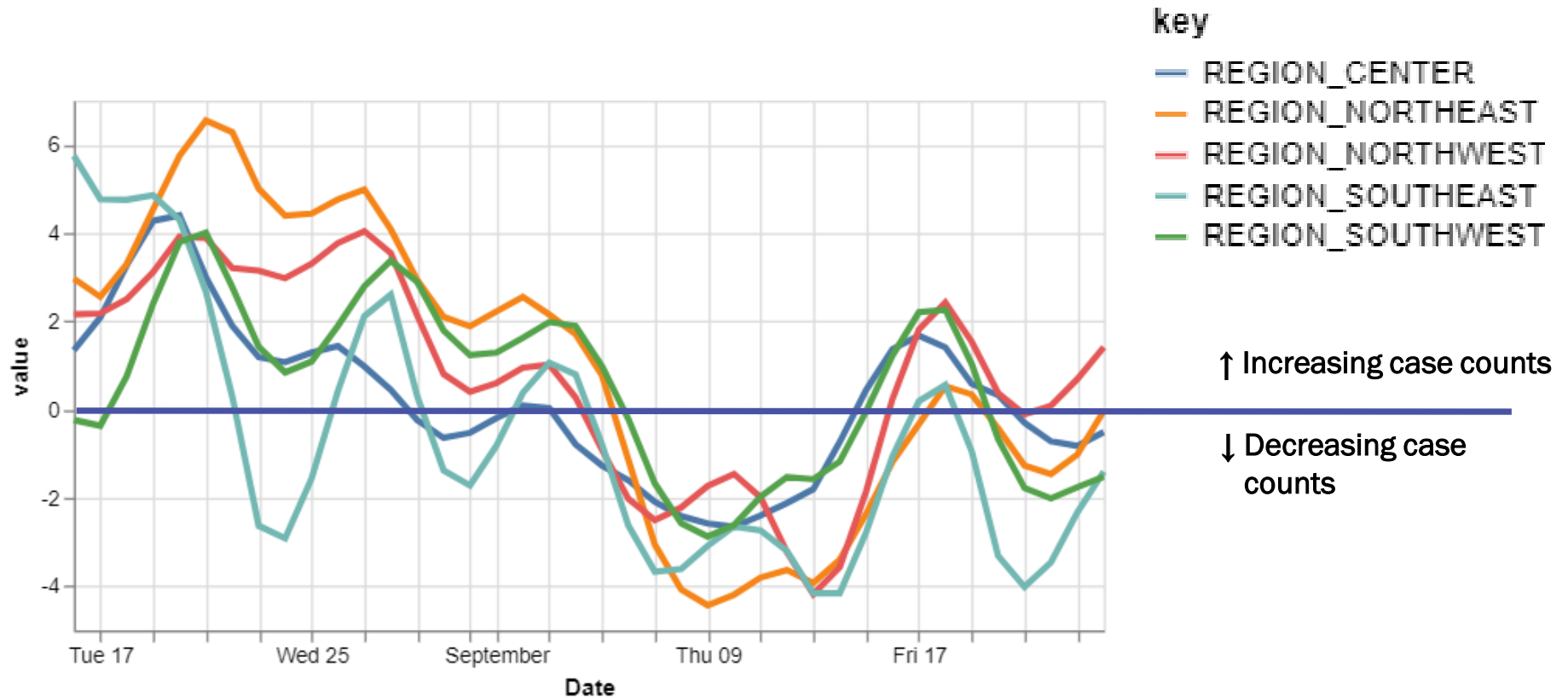


Region	R-effective	95% Confidence Interval
State	1.0	[0.8, 1.3]
Metro	1.1	[0.6, 1.5]
Northeast	1.0	[0.4, 1.9]
Northwest	1.1	[0.4, 1.9]
Southeast	0.9	[0.5, 1.4]
Southwest	1.0	[0.4, 1.7]

Courtesy of Presbyterian Healthcare Services – September 24, 2021.

One of five regions have relative growth rates greater than 0.

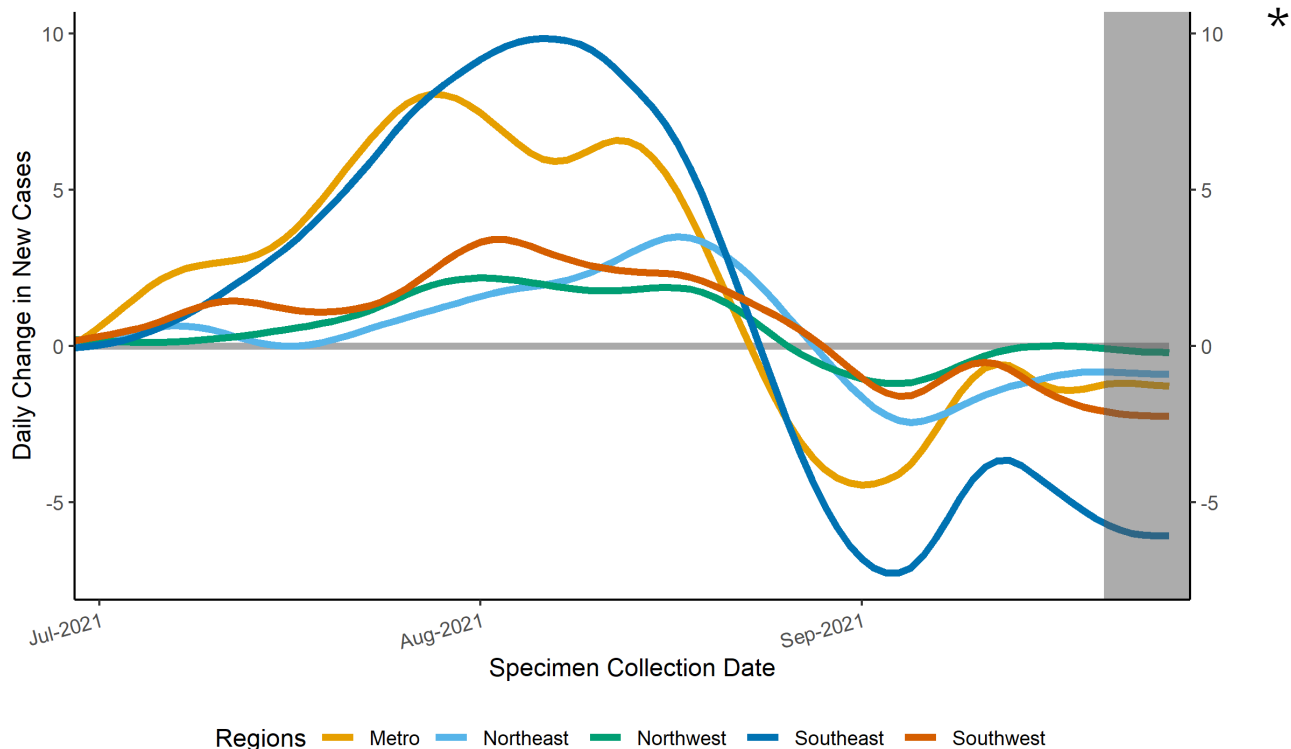
14-day relative growth rate (%), Regions



Courtesy of Presbyterian Healthcare Services – September 24, 2021.

Epidemic Growth Acceleration

Daily Change in New COVID-19 Cases, by New Mexico Region, as of September 27, 2021



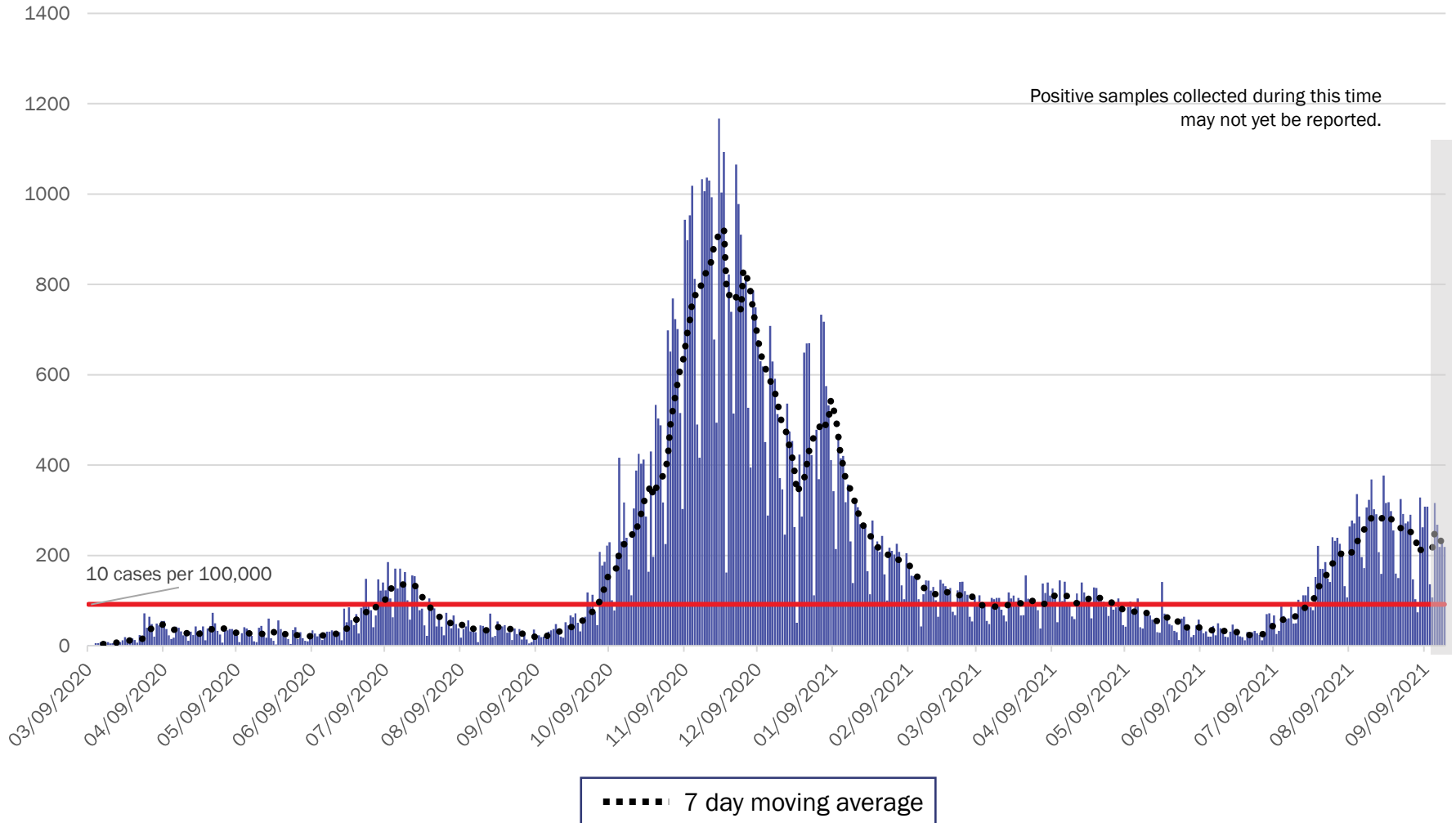
*

	Region	Growth Acceleration September 20, 2021
1	Metro	-1.3
2	Northeast	-0.8
3	Northwest	0.0
4	Southeast	-5.5
5	Southwest	-2.0

*Positive specimens collected in the last 7 or more days may not yet be reported to NMDOH. Case counts and growth acceleration during this time are underestimated.

Source: Infectious Disease Epidemiology Bureau, Epidemiology and Response Division 9.27.2021, New Mexico Department of Health.

Metro Region Case Count by Collection Date with 7 Day Moving Average September 27, 2021



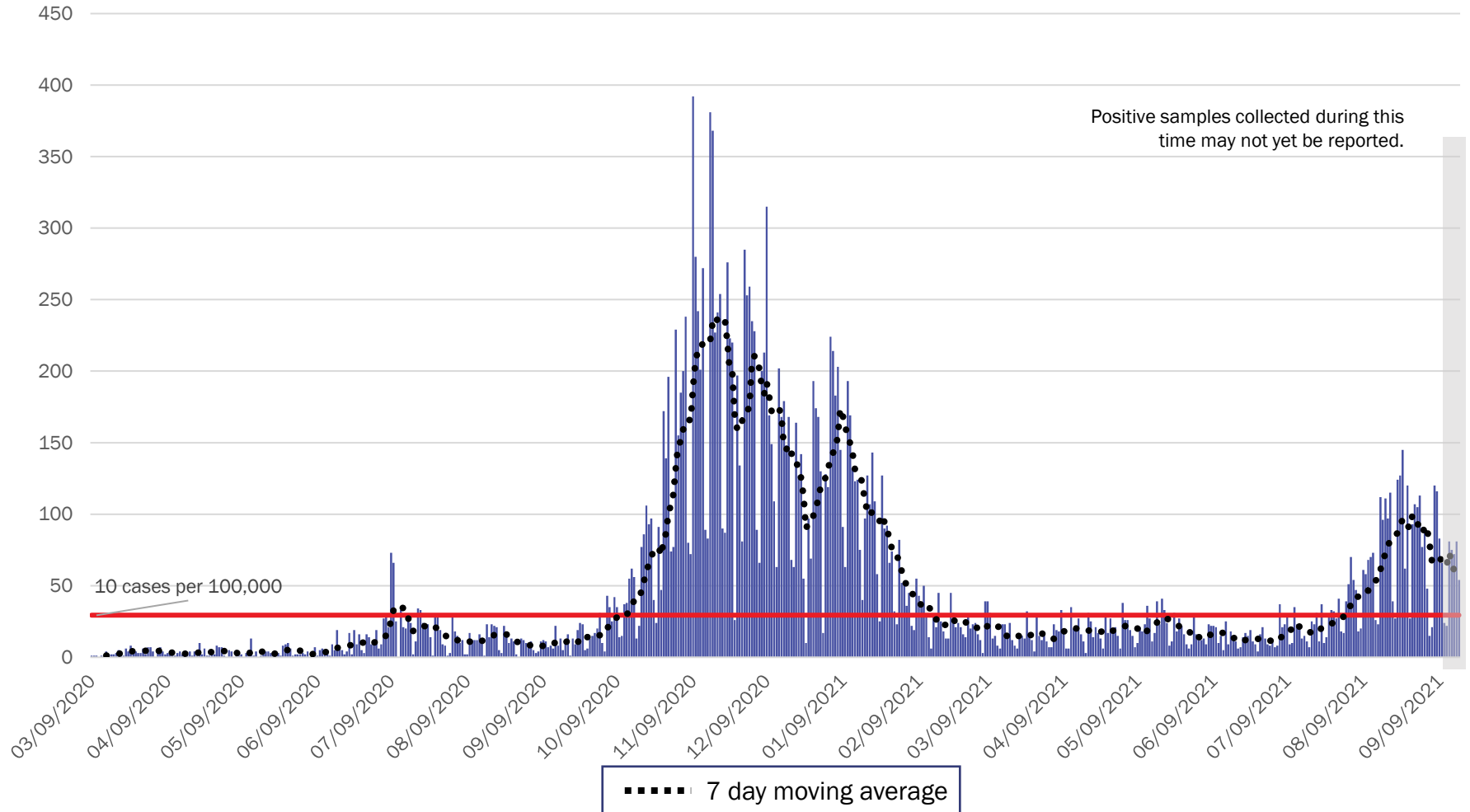
Source: Infectious Disease Epidemiology Bureau, Epidemiology and Response Division 9.27.2021, New Mexico Department of Health.



Investing for tomorrow, delivering today.

1190 S. St. Francis Drive • Santa Fe, NM 87505 • Phone: 505-827-2613 • Fax: 505-827-2530 • nmhealth.org

Northeast Region Case Count by Collection Date with 7 Day Moving Average September 27, 2021



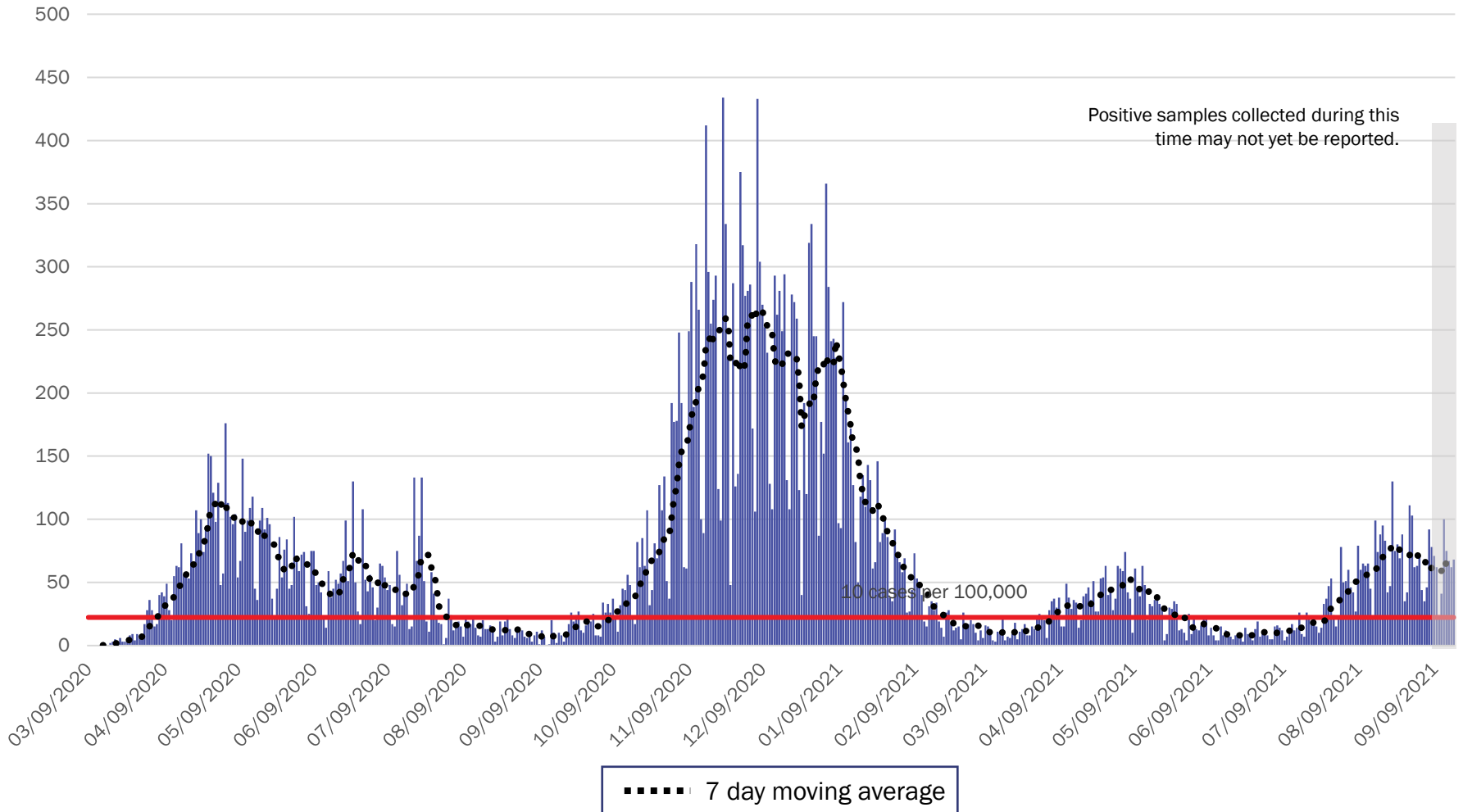
Source: Infectious Disease Epidemiology Bureau, Epidemiology and Response Division 9.27.2021, New Mexico Department of Health.



Investing for tomorrow, delivering today.

1190 S. St. Francis Drive • Santa Fe, NM 87505 • Phone: 505-827-2613 • Fax: 505-827-2530 • nmhealth.org

Northwest Region Case Count by Collection Date with 7 Day Moving Average September 27, 2021



Source: Infectious Disease Epidemiology Bureau, Epidemiology and Response Division 9.27.2021, New Mexico Department of Health.



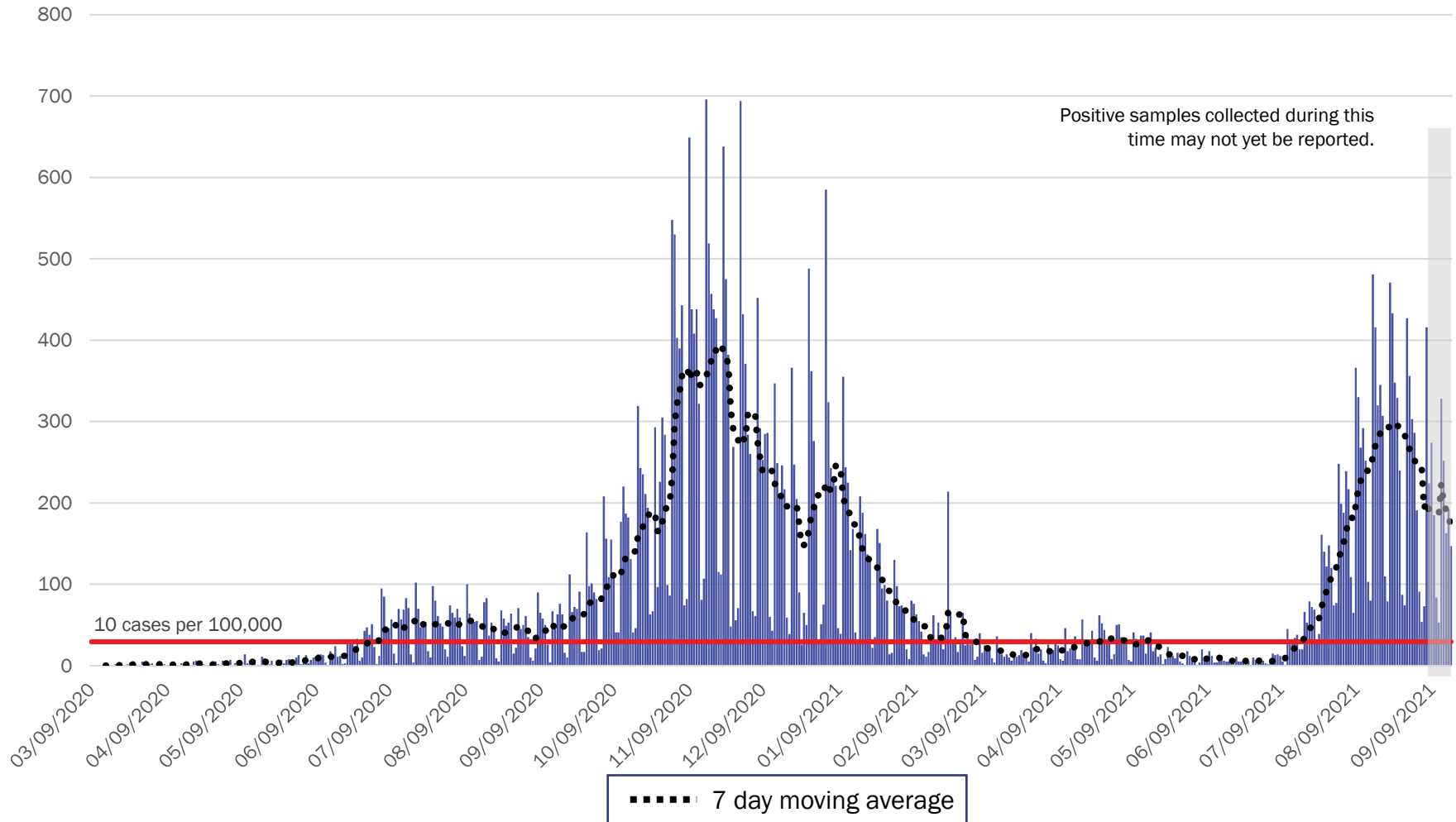
Investing for tomorrow, delivering today.



1190 S. St. Francis Drive • Santa Fe, NM 87505 • Phone: 505-827-2613 • Fax: 505-827-2530 • nmhealth.org

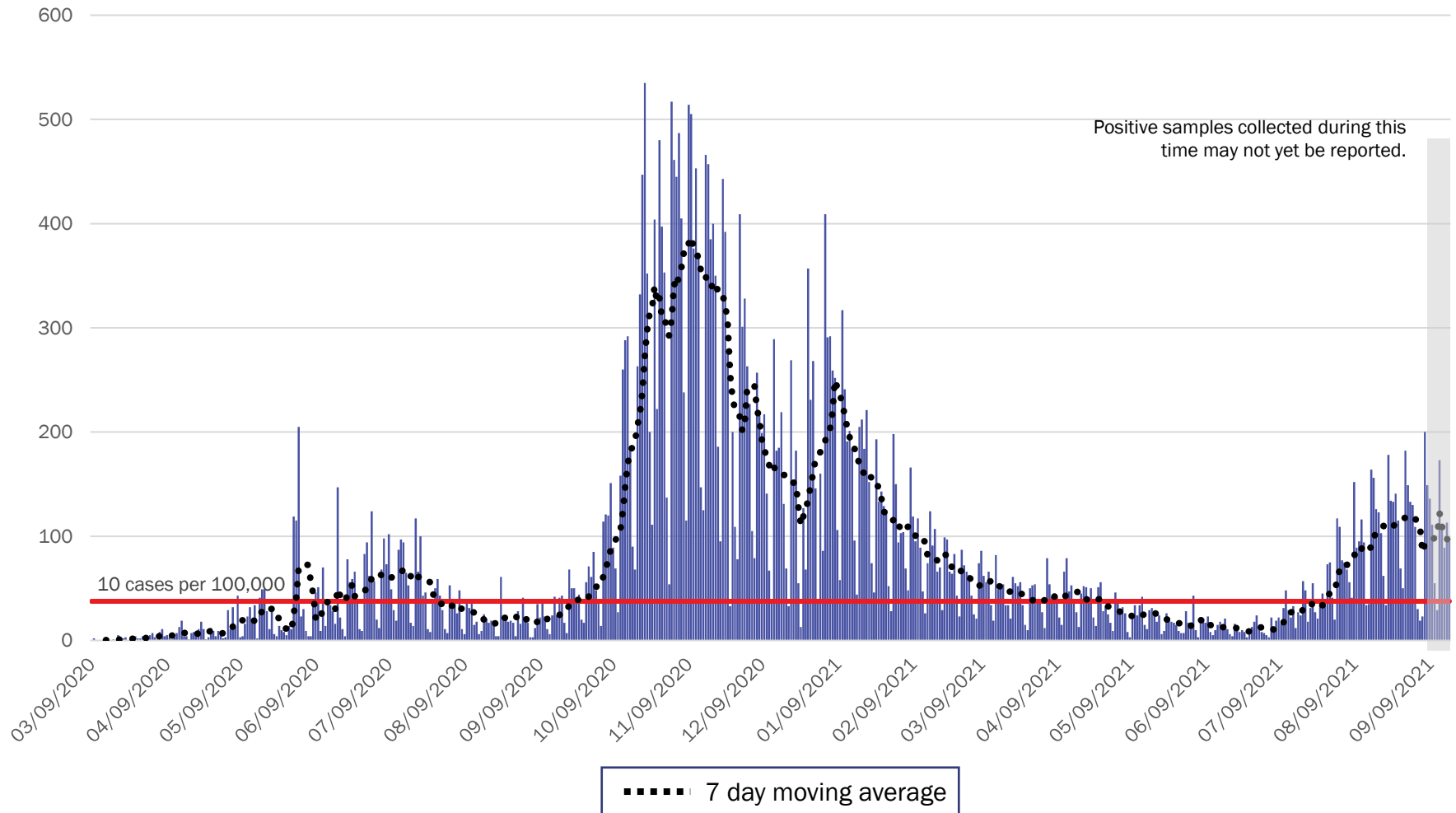
Southeast Region Case Count by Collection Date with 7 Day Moving Average

September 27, 2021



Source: Infectious Disease Epidemiology Bureau, Epidemiology and Response Division 9.27.2021, New Mexico Department of Health.

Southwest Region Case Count by Collection Date with 7 Day Moving Average September 27, 2021



Source: Infectious Disease Epidemiology Bureau, Epidemiology and Response Division 9.27.2021, New Mexico Department of Health.



Investing for tomorrow, delivering today.

1190 S. St. Francis Drive • Santa Fe, NM 87505 • Phone: 505-827-2613 • Fax: 505-827-2530 • nmhealth.org

New Mexico Status Updates

- Case count: Statewide, daily case counts are decreasing.
- Hospitalizations: COVID-19 hospitalizations are decreasing.
- Deaths: COVID-19 deaths are decreasing.

For more information, please visit the [Epidemiology Reports](https://cv.nmhealth.org/epidemiology-reports/) page on the NMDOH COVID-19 website: <https://cv.nmhealth.org/epidemiology-reports/>