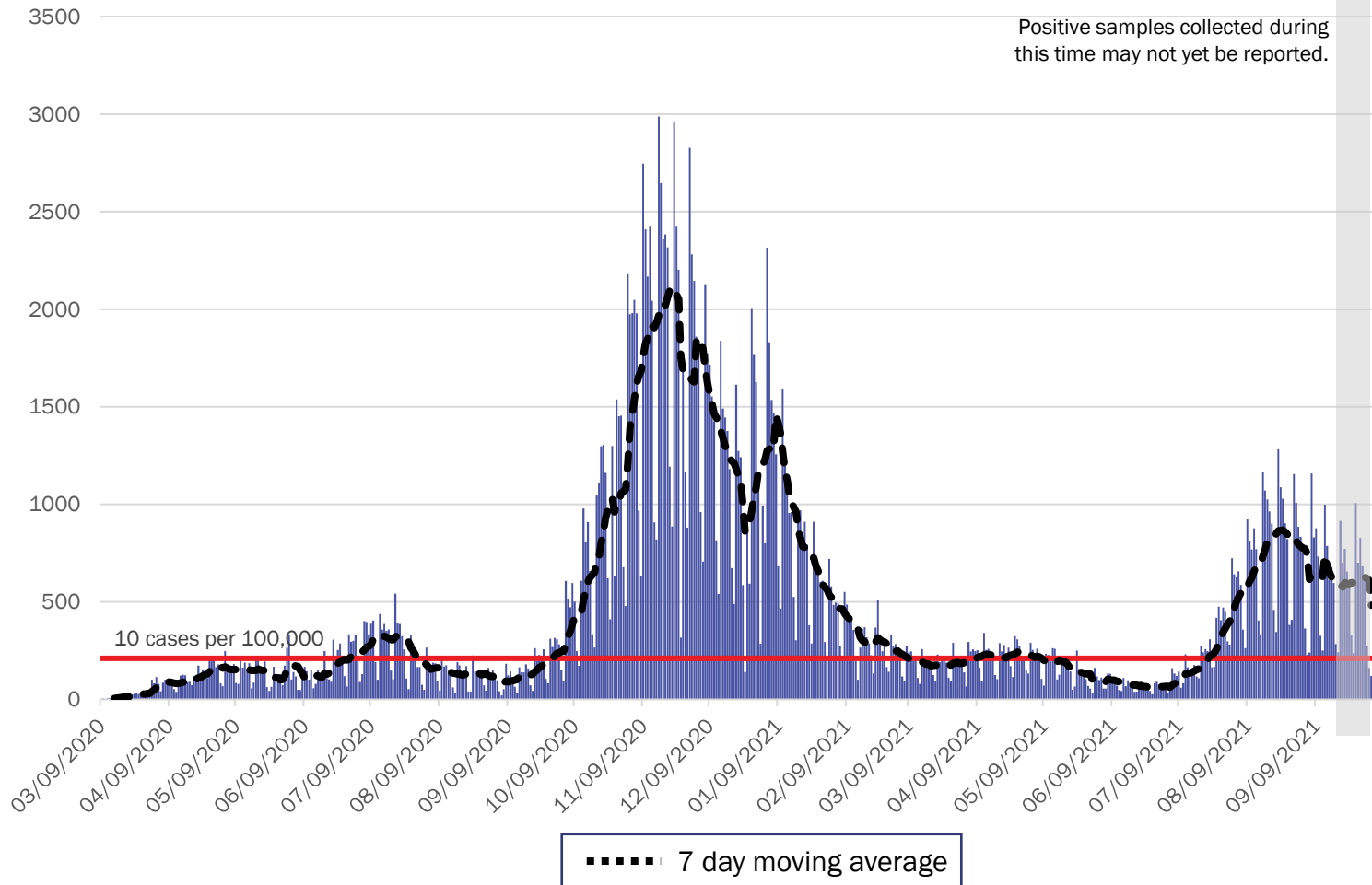


COVID-19 in New Mexico: Epidemiologic and Modeling Update

October 5, 2021

New Mexico COVID-19 Cases by Date of Specimen Collection October 5, 2021



Source: Infectious Disease Epidemiology Bureau, Epidemiology and Response Division 10.05.2021, New Mexico Department of Health.



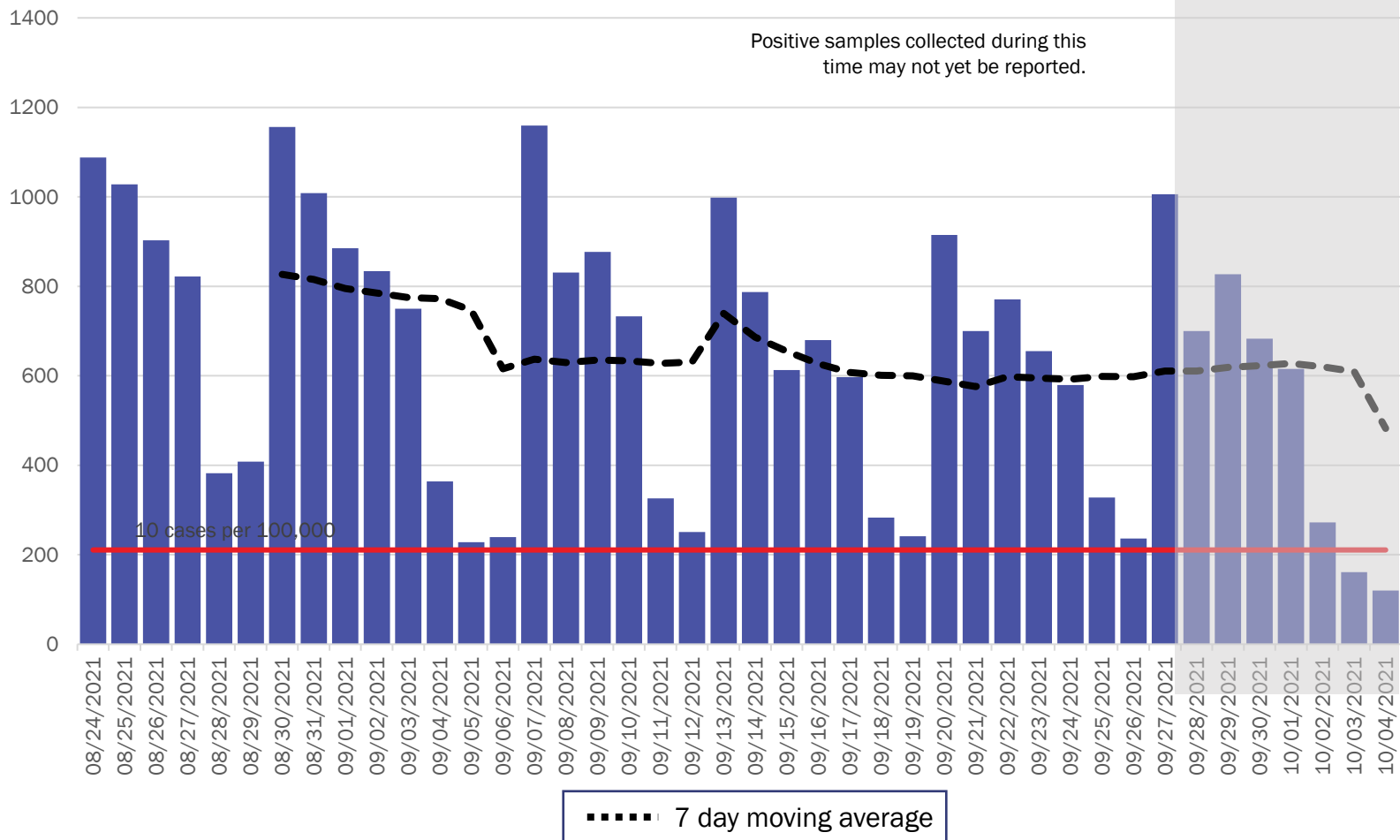
Investing for tomorrow, delivering today.

1190 S. St. Francis Drive • Santa Fe, NM 87505 • Phone: 505-827-2613 • Fax: 505-827-2530 • nmhealth.org

New Mexico COVID-19 Cases by Date of Specimen Collection

Recent 6 Week View

October 5, 2021



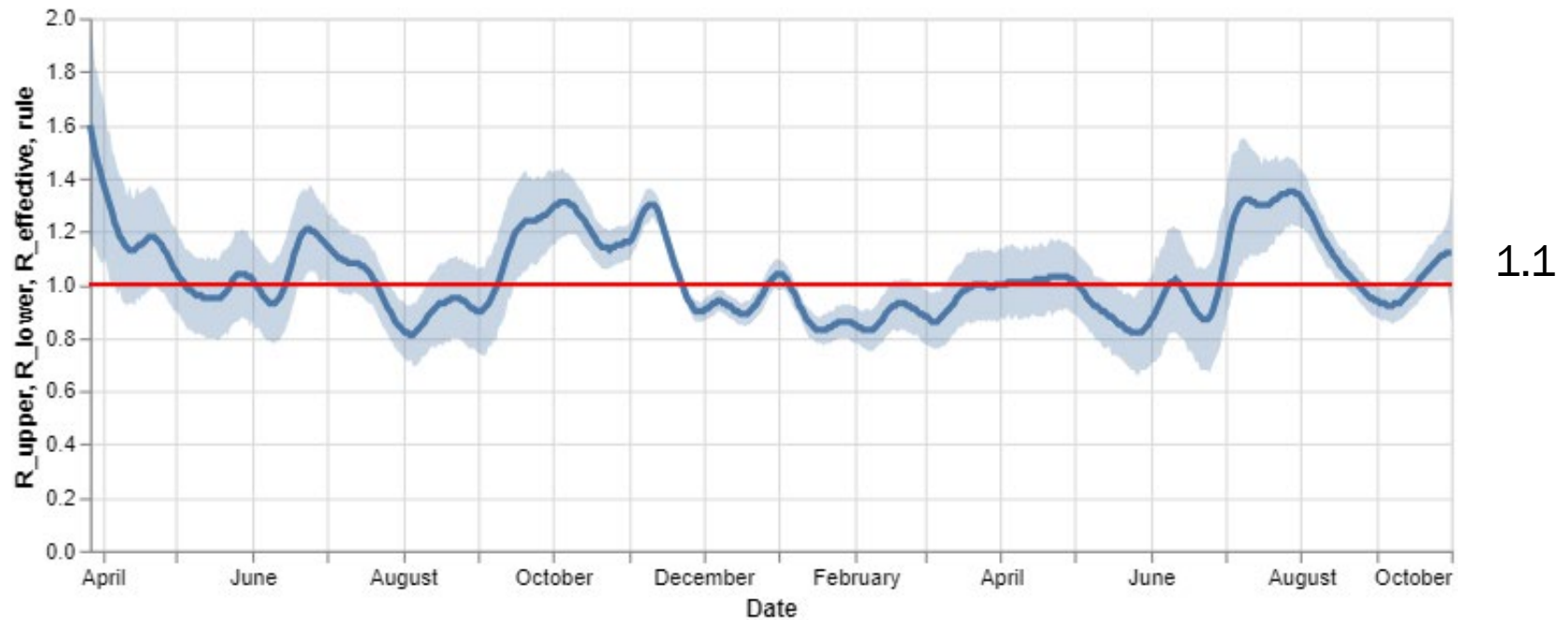
Source: Infectious Disease Epidemiology Bureau, Epidemiology and Response Division 10.05..2021, New Mexico Department of Health.



Investing for tomorrow, delivering today.

1190 S. St. Francis Drive • Santa Fe, NM 87505 • Phone: 505-827-2613 • Fax: 505-827-2530 • nmhealth.org

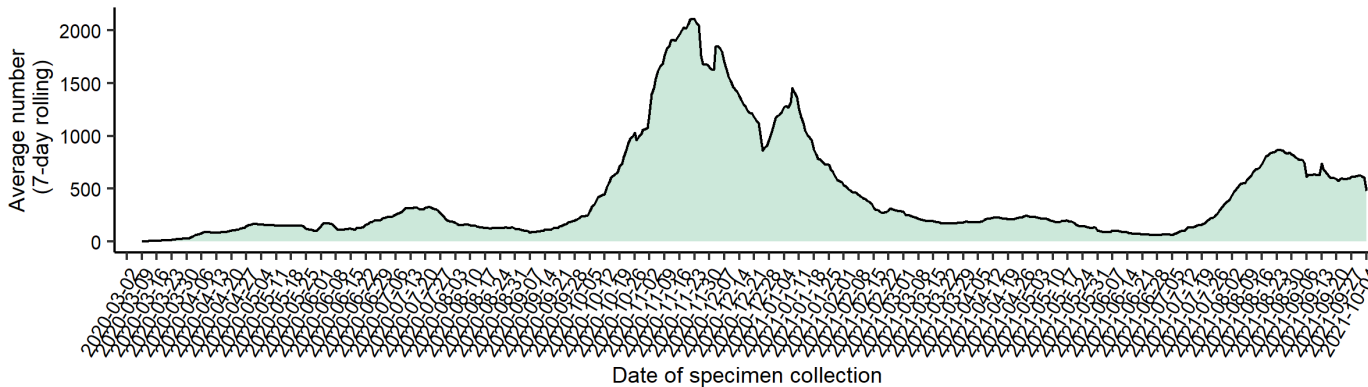
Statewide R-effective has increased to 1.1



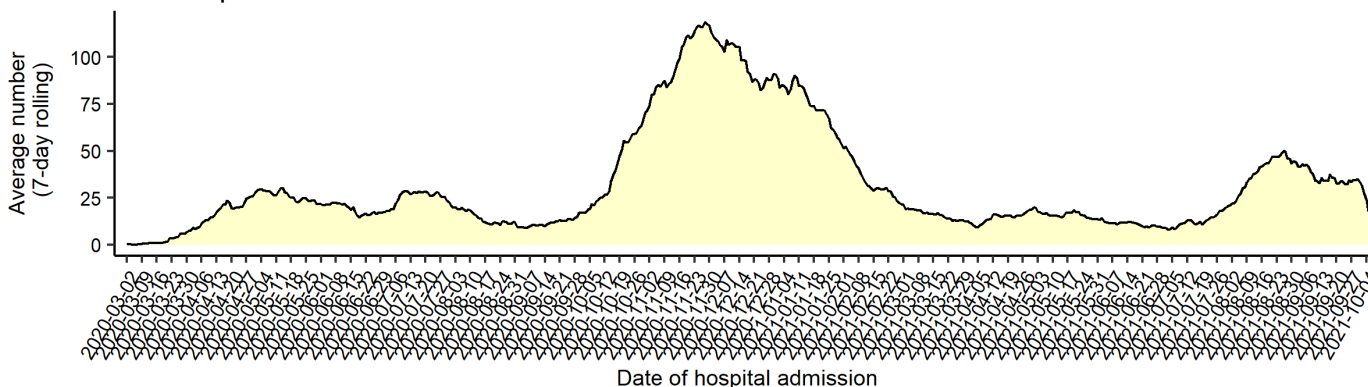
Courtesy of Presbyterian Healthcare Services – October 1, 2021.

Average number (7-day rolling average) of cases, hospitalizations, and deaths over time

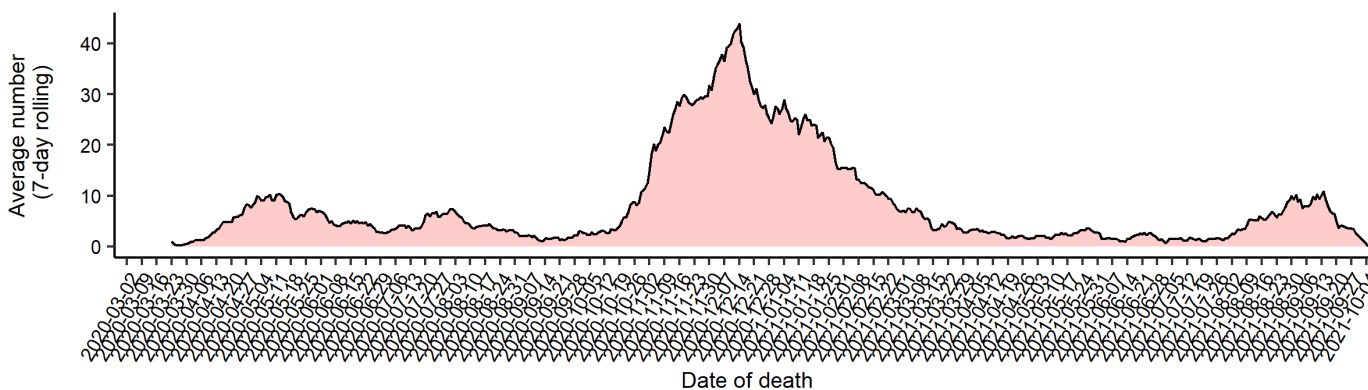
Cases



Hospitalizations



Deaths



Note: Cases, hospitalizations, and deaths may not yet be reported in 7 or more days.

As of 10/05/21



Key

- ↓ Low Level Endemic <1.0
- Approaching Low Level Endemic 1.0
- ↑ Requiring further mitigation >1.0

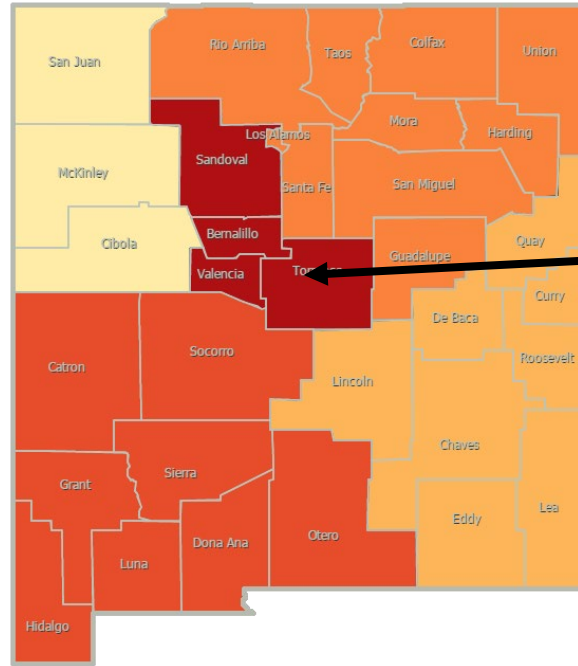
Northwest
R_effective 1.4 ↑

Northeast
R_effective 1.1 ↑

Metro
R_effective 1.1 ↑

Southwest
R_effective 1.0

Southeast
R_effective 1.0



As of September 24, 2021

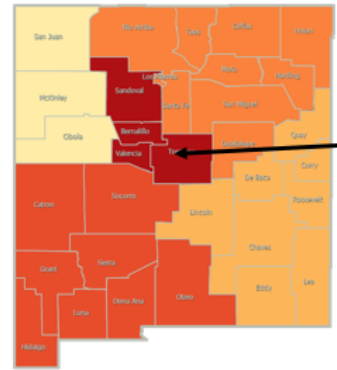
Northwest
R_effective 1.1 ↑

Northeast
R_effective 1.0

Metro
R_effective 1.1 ↑

Southwest
R_effective 1.0

Southeast
R_effective 0.9 ↓

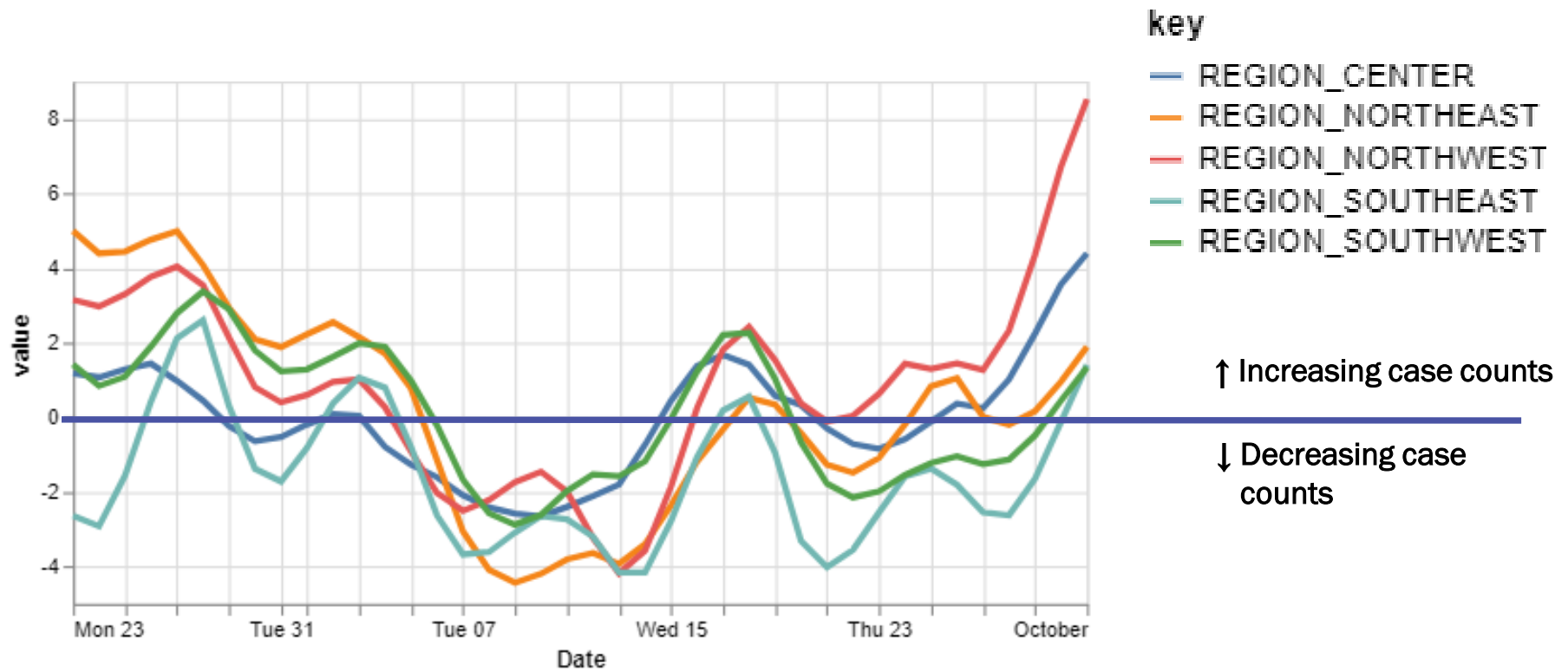


Region	R-effective	95% Confidence Interval
State	1.1	[0.9, 1.4]
Metro	1.1	[0.7, 1.6]
Northeast	1.1	[0.5, 1.9]
Northwest	1.4	[0.7, 2.0]
Southeast	1.0	[0.5, 1.6]
Southwest	1.0	[0.4, 1.8]

Courtesy of Presbyterian Healthcare Services – October 1, 2021.

All five regions have relative growth rates greater than 0.

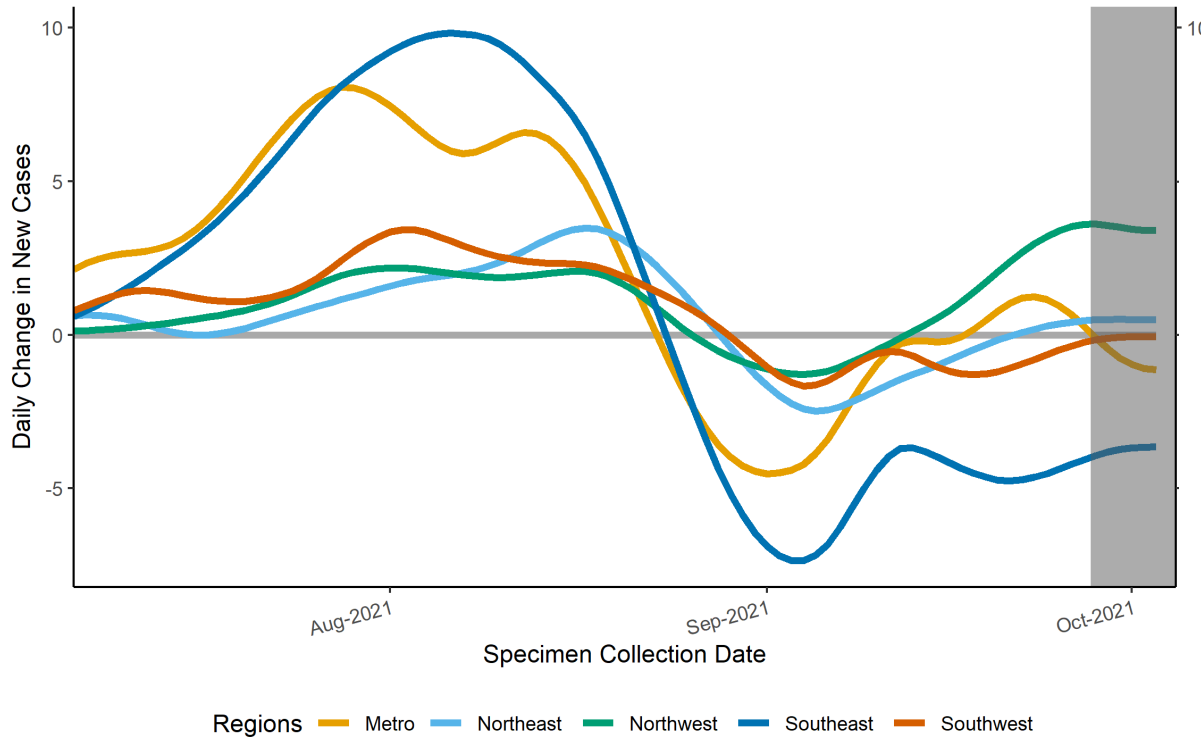
14-day relative growth rate (%), Regions



Courtesy of Presbyterian Healthcare Services – October 1, 2021.

Epidemic Growth Acceleration

Daily Change in New COVID-19 Cases, by New Mexico Region, as of October 04, 2021



*

Region	Growth Acceleration September 27, 2021
1 Metro	0.3
2 Northeast	0.5
3 Northwest	3.6
4 Southeast	-4.1
5 Southwest	-0.2

*Positive specimens collected in the last 7 or more days may not yet be reported to NMDOH. Case counts and growth acceleration during this time are underestimated.

Source: Infectious Disease Epidemiology Bureau, Epidemiology and Response Division 10.04.2021, New Mexico Department of Health.

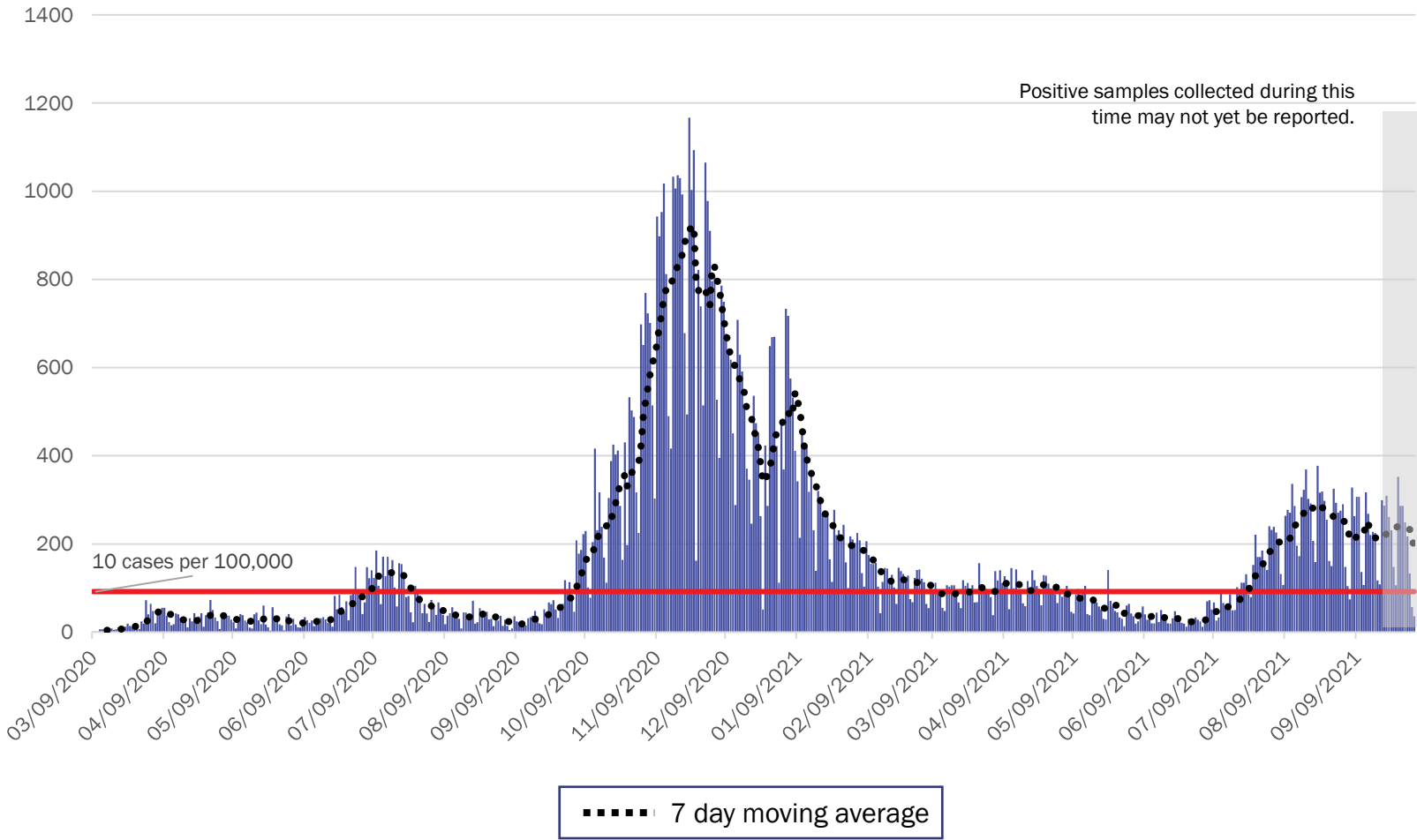


Investing for tomorrow, delivering today.



1190 S. St. Francis Drive • Santa Fe, NM 87505 • Phone: 505-827-2613 • Fax: 505-827-2530 • nmhealth.org

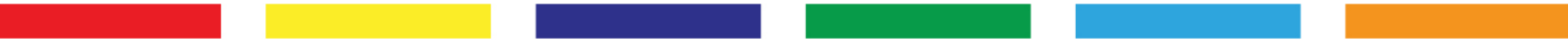
Metro Region Case Count by Collection Date with 7 Day Moving Average October 5, 2021



Source: Infectious Disease Epidemiology Bureau, Epidemiology and Response Division 10.05.2021, New Mexico Department of Health.

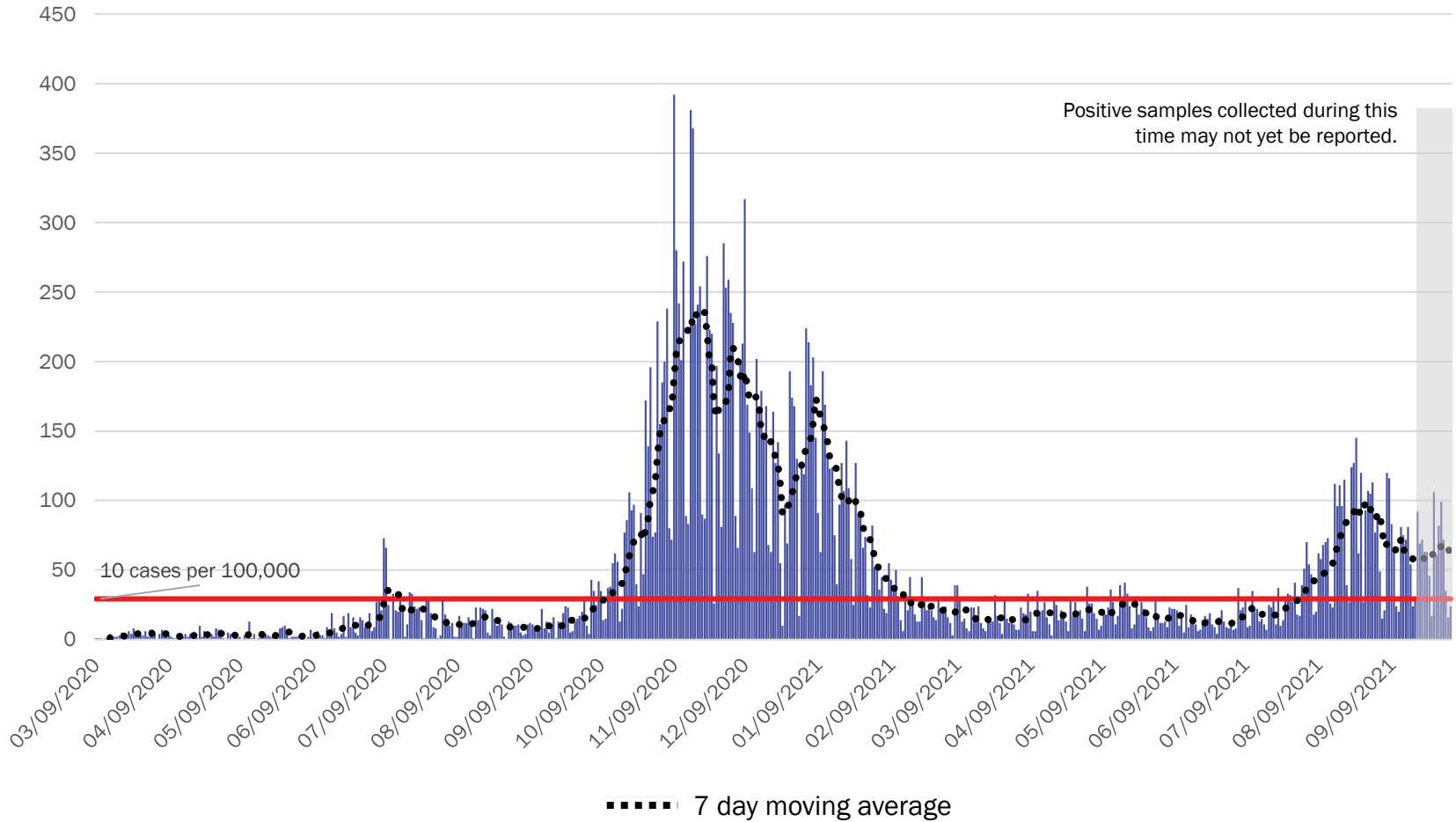


Investing for tomorrow, delivering today.



1190 S. St. Francis Drive • Santa Fe, NM 87505 • Phone: 505-827-2613 • Fax: 505-827-2530 • nmhealth.org

Northeast Region Case Count by Collection Date with 7 Day Moving Average October 5, 2021



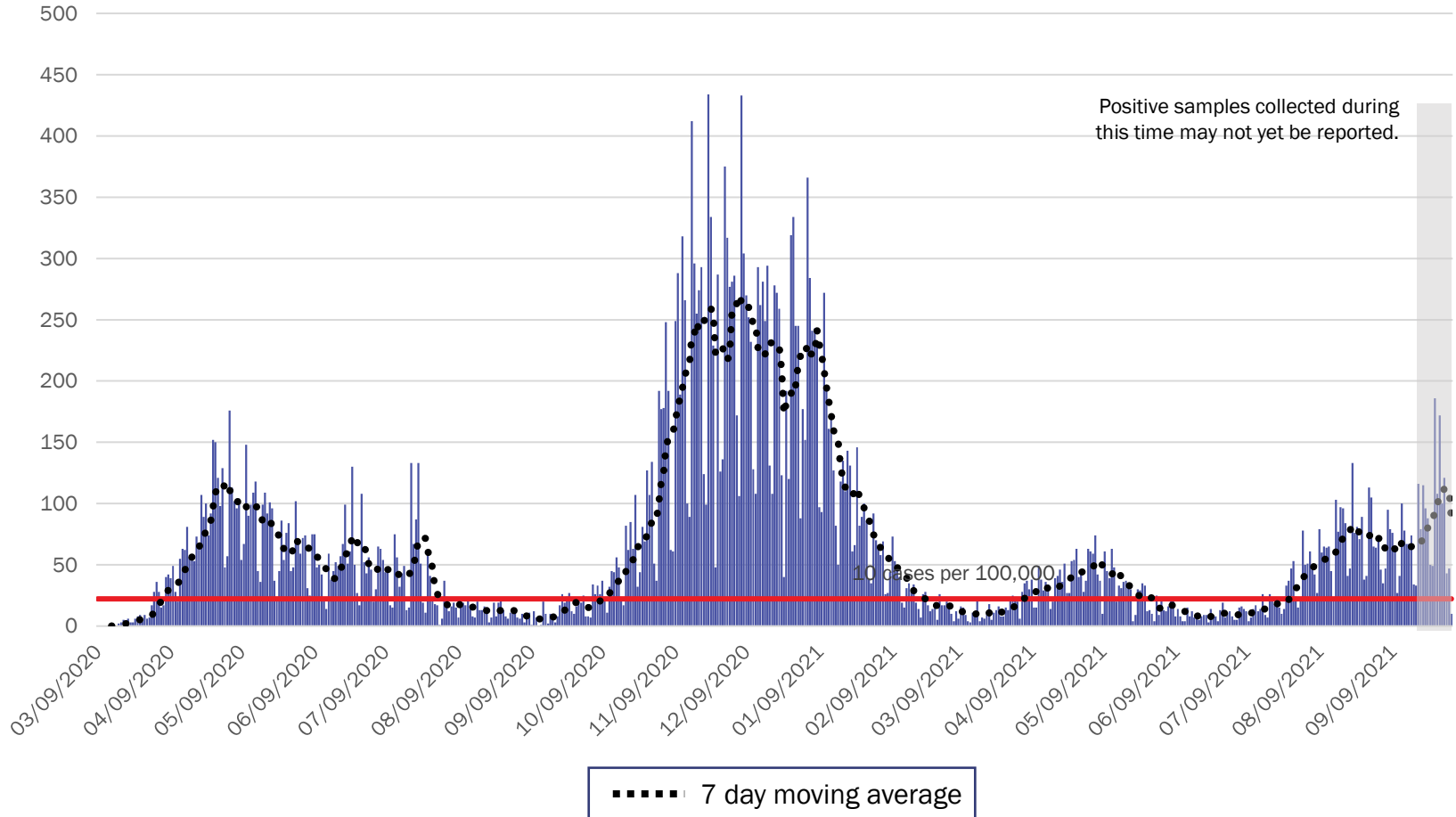
Source: Infectious Disease Epidemiology Bureau, Epidemiology and Response Division 10.05.2021, New Mexico Department of Health.



Investing for tomorrow, delivering today.

1190 S. St. Francis Drive • Santa Fe, NM 87505 • Phone: 505-827-2613 • Fax: 505-827-2530 • nmhealth.org

Northwest Region Case Count by Collection Date with 7 Day Moving Average October 5, 2021



Source: Infectious Disease Epidemiology Bureau, Epidemiology and Response Division 10.05.2021, New Mexico Department of Health.

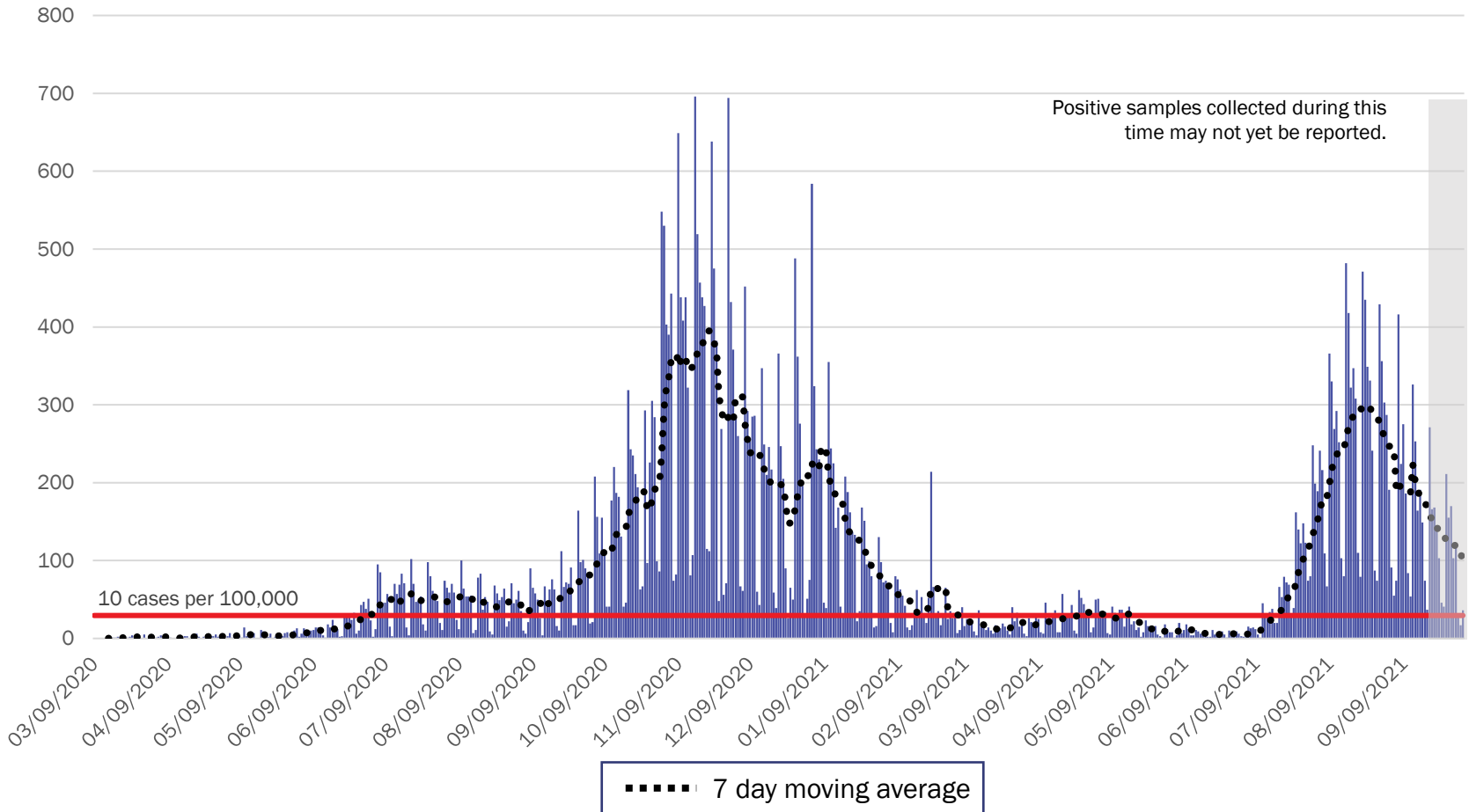


Investing for tomorrow, delivering today.



1190 S. St. Francis Drive • Santa Fe, NM 87505 • Phone: 505-827-2613 • Fax: 505-827-2530 • nmhealth.org

Southeast Region Case Count by Collection Date with 7 Day Moving Average October 5, 2021



Source: Infectious Disease Epidemiology Bureau, Epidemiology and Response Division 10.05.2021, New Mexico Department of Health.

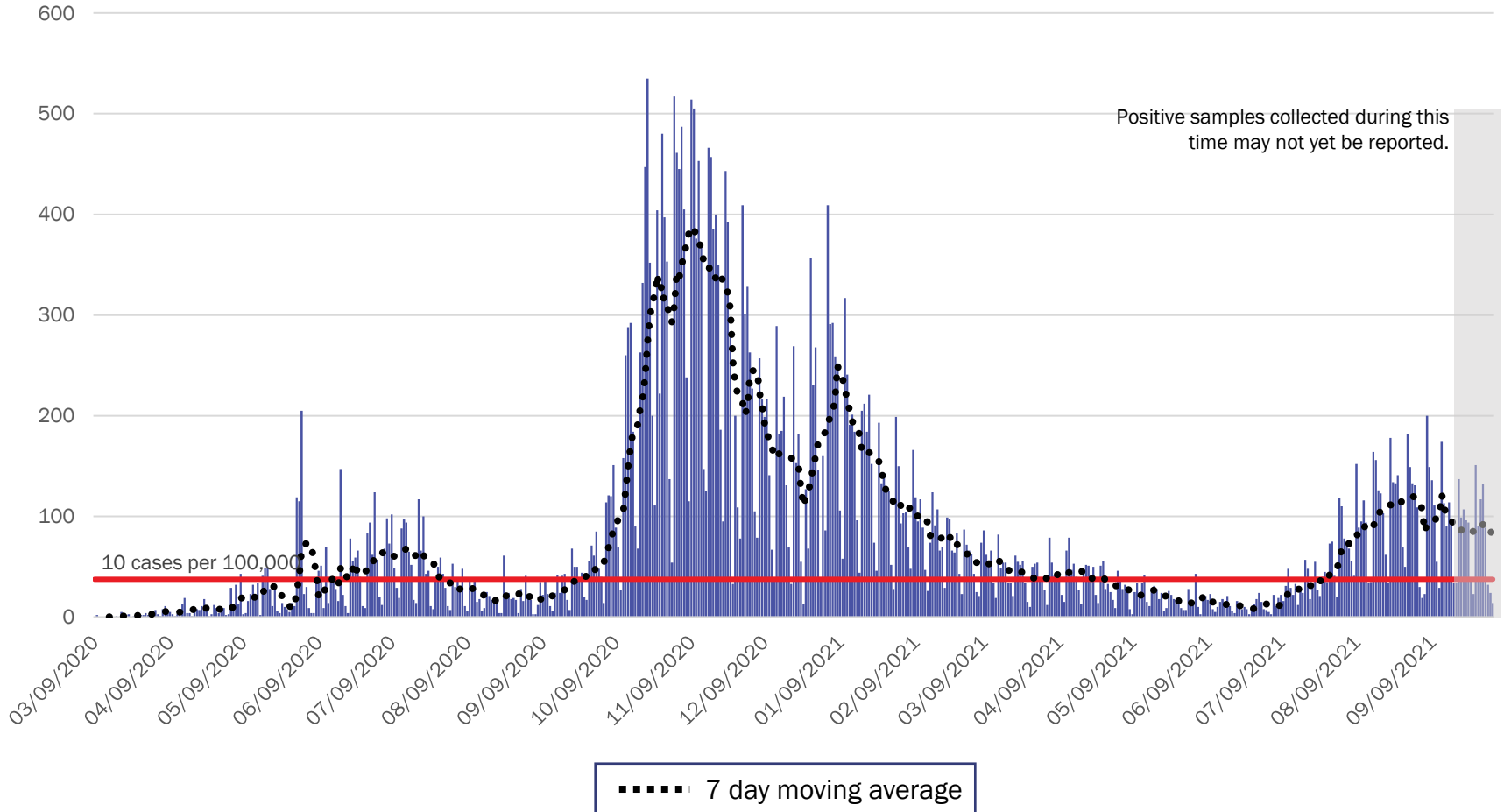


Investing for tomorrow, delivering today.



1190 S. St. Francis Drive • Santa Fe, NM 87505 • Phone: 505-827-2613 • Fax: 505-827-2530 • nmhealth.org

Southwest Region Case Count by Collection Date with 7 Day Moving Average October 5, 2021



Source: Infectious Disease Epidemiology Bureau, Epidemiology and Response Division 10.05.2021, New Mexico Department of Health.



Investing for tomorrow, delivering today.



1190 S. St. Francis Drive • Santa Fe, NM 87505 • Phone: 505-827-2613 • Fax: 505-827-2530 • nmhealth.org

New Mexico Status Updates

- Case count: Statewide, daily case counts seem to have plateaued.
- Hospitalizations: COVID-19 hospitalizations seem to have plateaued.
- Deaths: COVID-19 deaths are decreasing.

For more information, please visit the [Epidemiology Reports](https://cv.nmhealth.org/epidemiology-reports/) page on the NMDOH COVID-19 website: <https://cv.nmhealth.org/epidemiology-reports/>