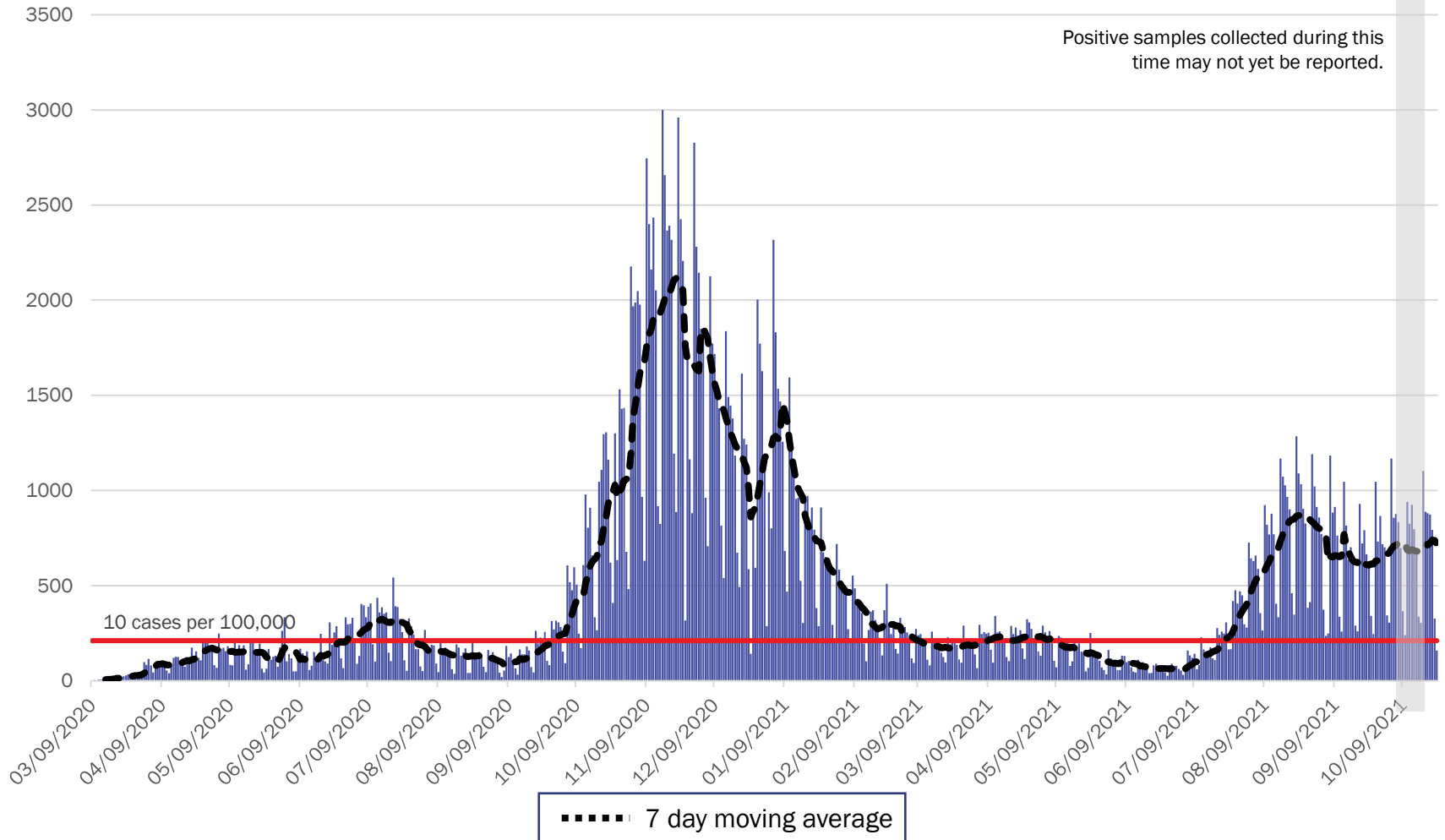


COVID-19 in New Mexico: Epidemiologic and Modeling Update

October 25, 2021

New Mexico COVID-19 Cases by Date of Specimen Collection October 25, 2021



Source: Infectious Disease Epidemiology Bureau, Epidemiology and Response Division 10.25.2021, New Mexico Department of Health.



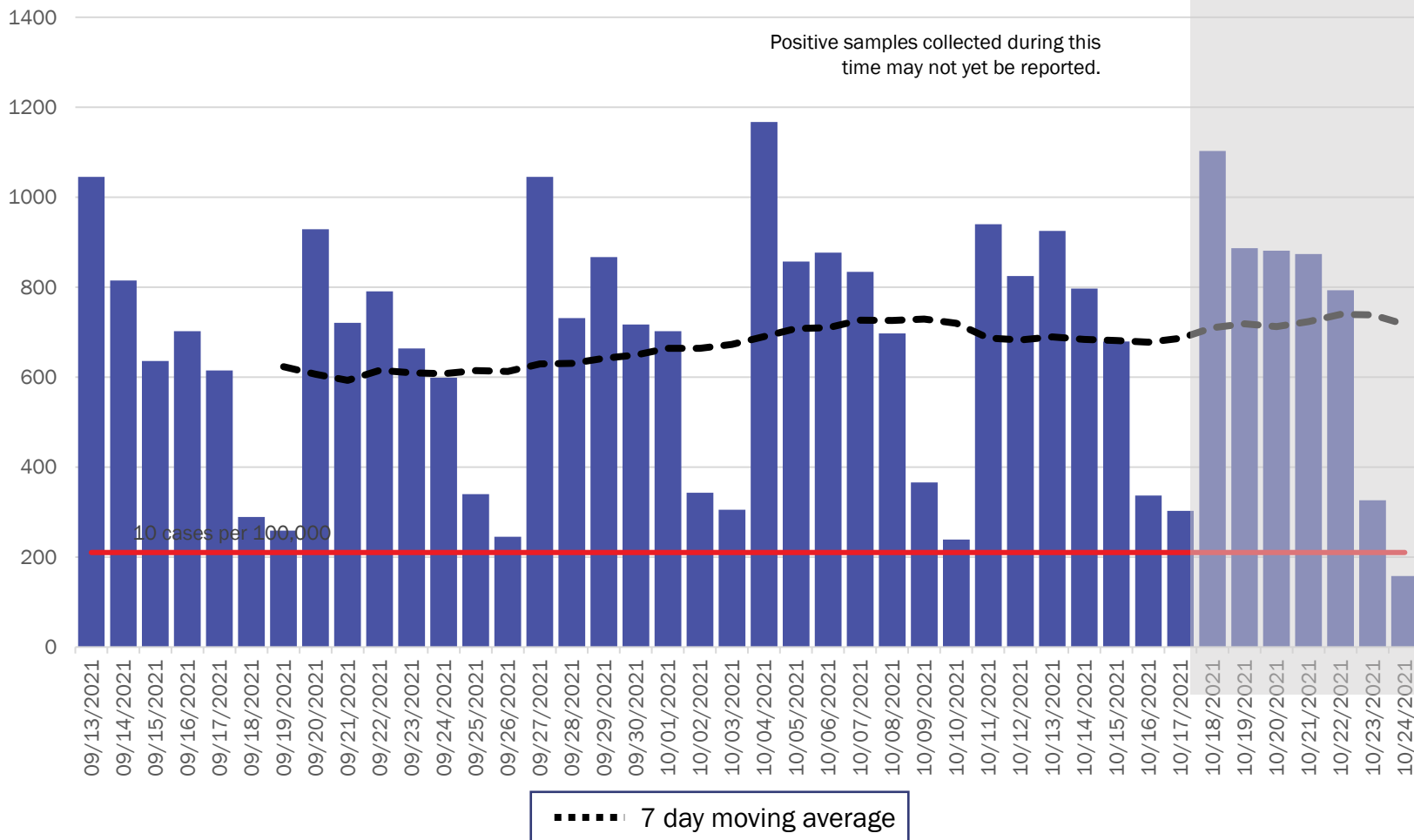
Investing for tomorrow, delivering today.

1190 S. St. Francis Drive • Santa Fe, NM 87505 • Phone: 505-827-2613 • Fax: 505-827-2530 • nmhealth.org

New Mexico COVID-19 Cases by Date of Specimen Collection

Recent 6 Week View

October 25, 2021



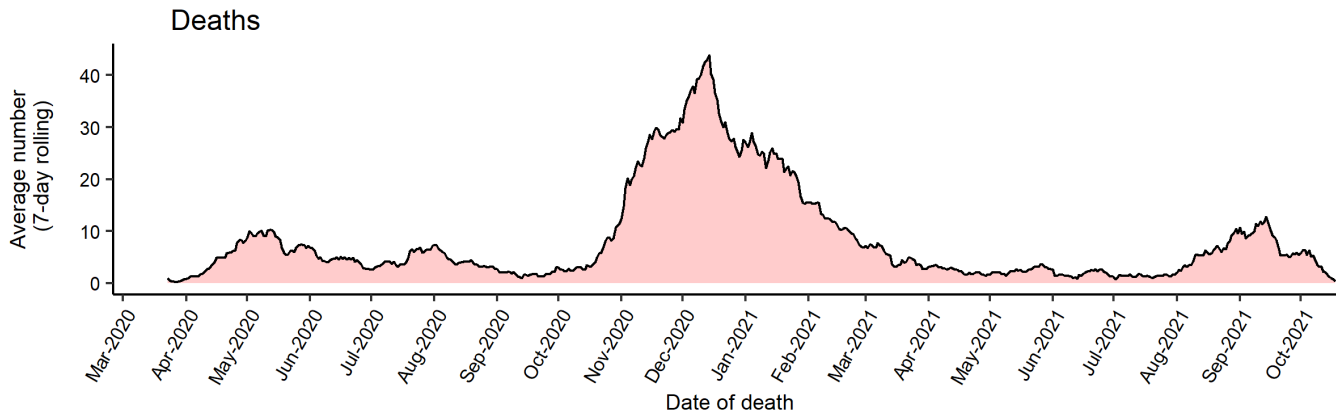
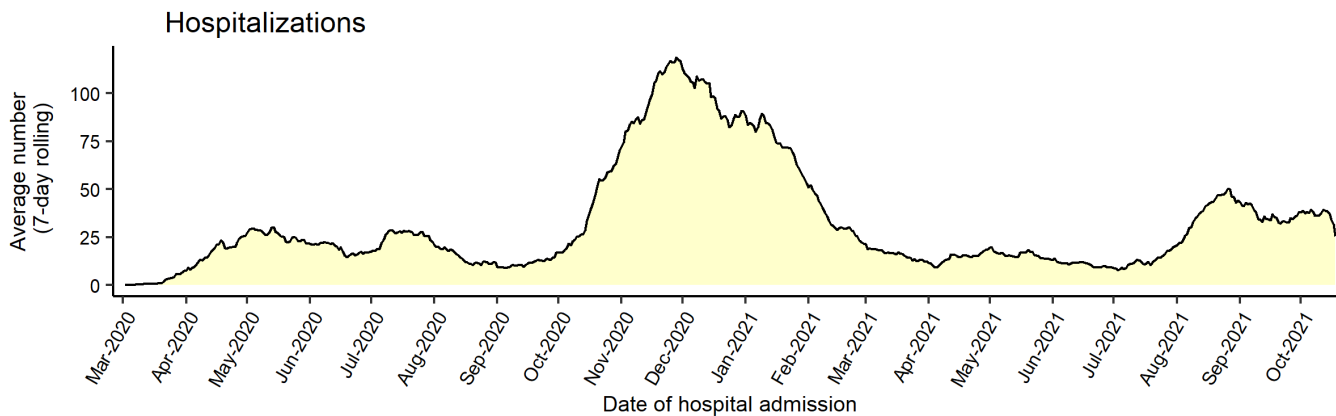
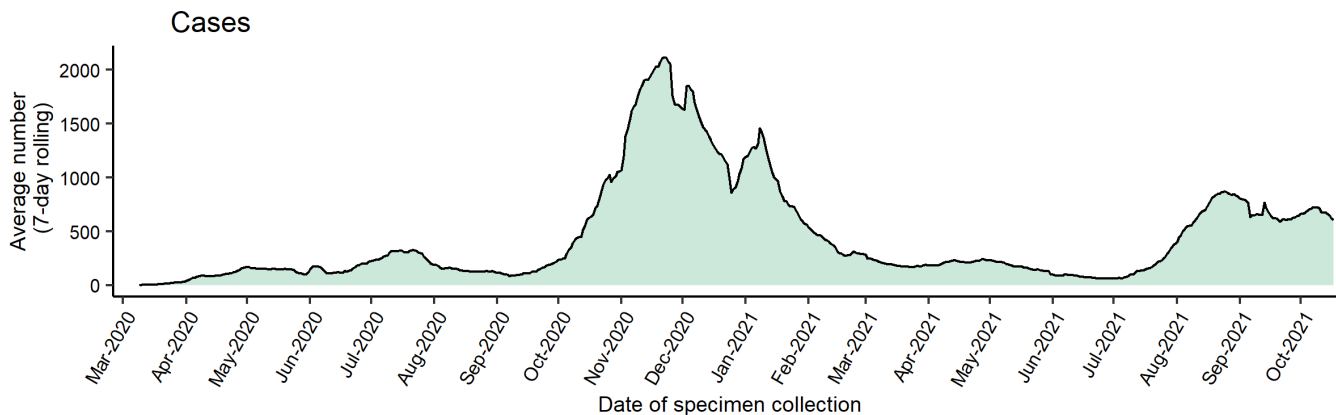
Source: Infectious Disease Epidemiology Bureau, Epidemiology and Response Division 10.25.2021, New Mexico Department of Health.



Investing for tomorrow, delivering today.

1190 S. St. Francis Drive • Santa Fe, NM 87505 • Phone: 505-827-2613 • Fax: 505-827-2530 • nmhealth.org

Average number (7-day rolling average) of cases, hospitalizations, and deaths over time



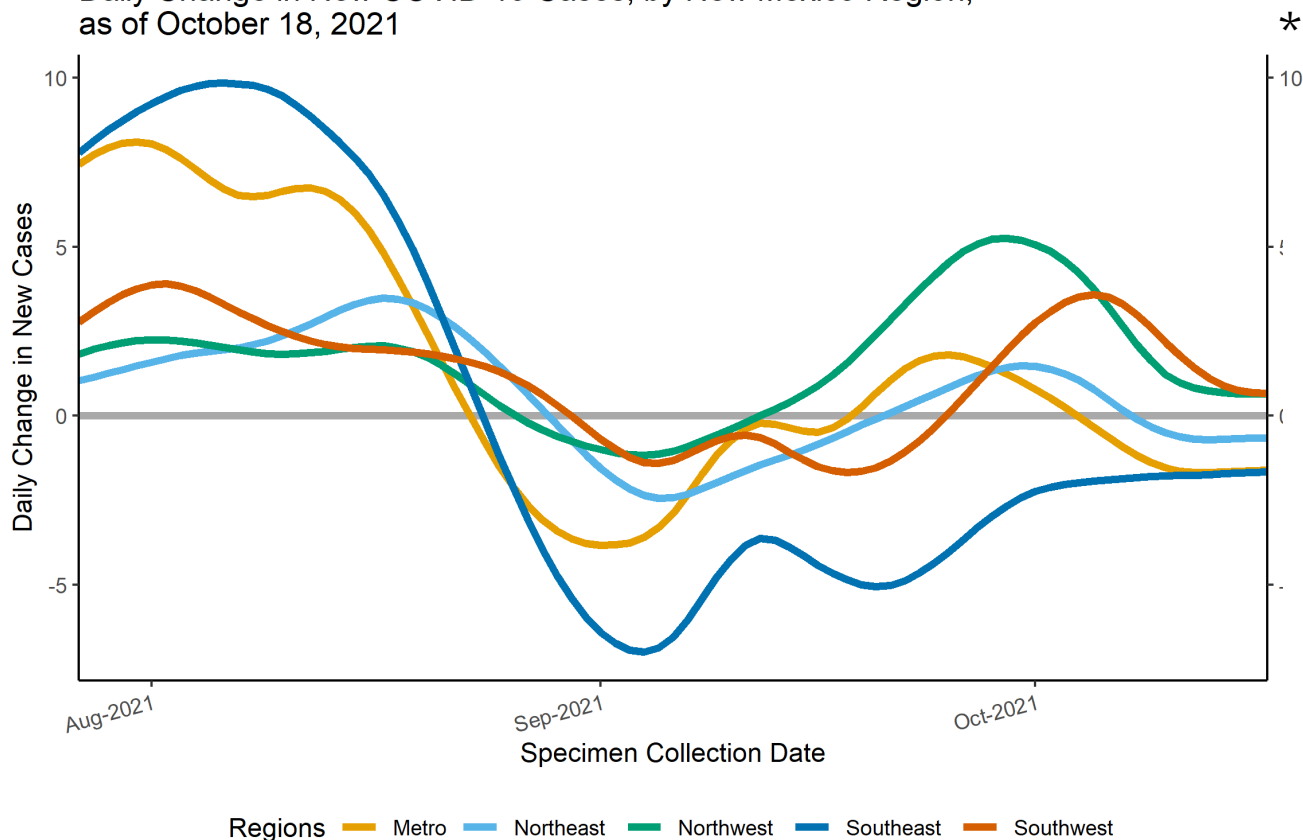
Note: Cases, hospitalizations, and deaths may not yet be reported in 7 or more days.

As of 10/25/21



Epidemic Growth Acceleration

Daily Change in New COVID-19 Cases, by New Mexico Region, as of October 18, 2021



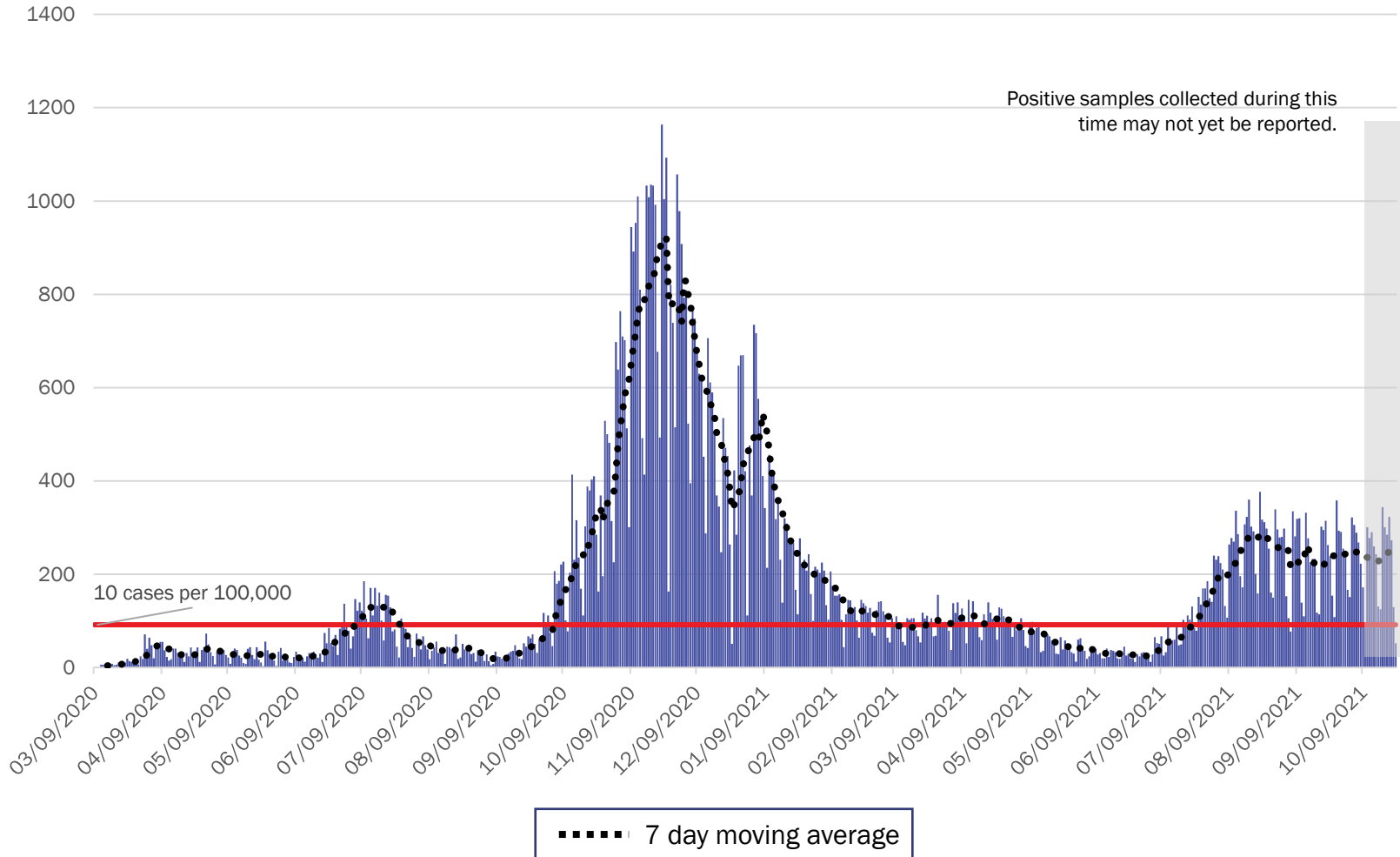
*

	Region	Growth Acceleration October 11, 2021
1	Metro	-1.6
2	Northeast	-0.6
3	Northwest	1.0
4	Southeast	-1.8
5	Southwest	1.8

*Positive specimens collected in the last 7 or more days may not yet be reported to NMDOH. Case counts and growth acceleration during this time are underestimated.

Source: Infectious Disease Epidemiology Bureau, Epidemiology and Response Division 10.25.2021, New Mexico Department of Health.

Metro Region Case Count by Collection Date with 7 Day Moving Average October 25, 2021



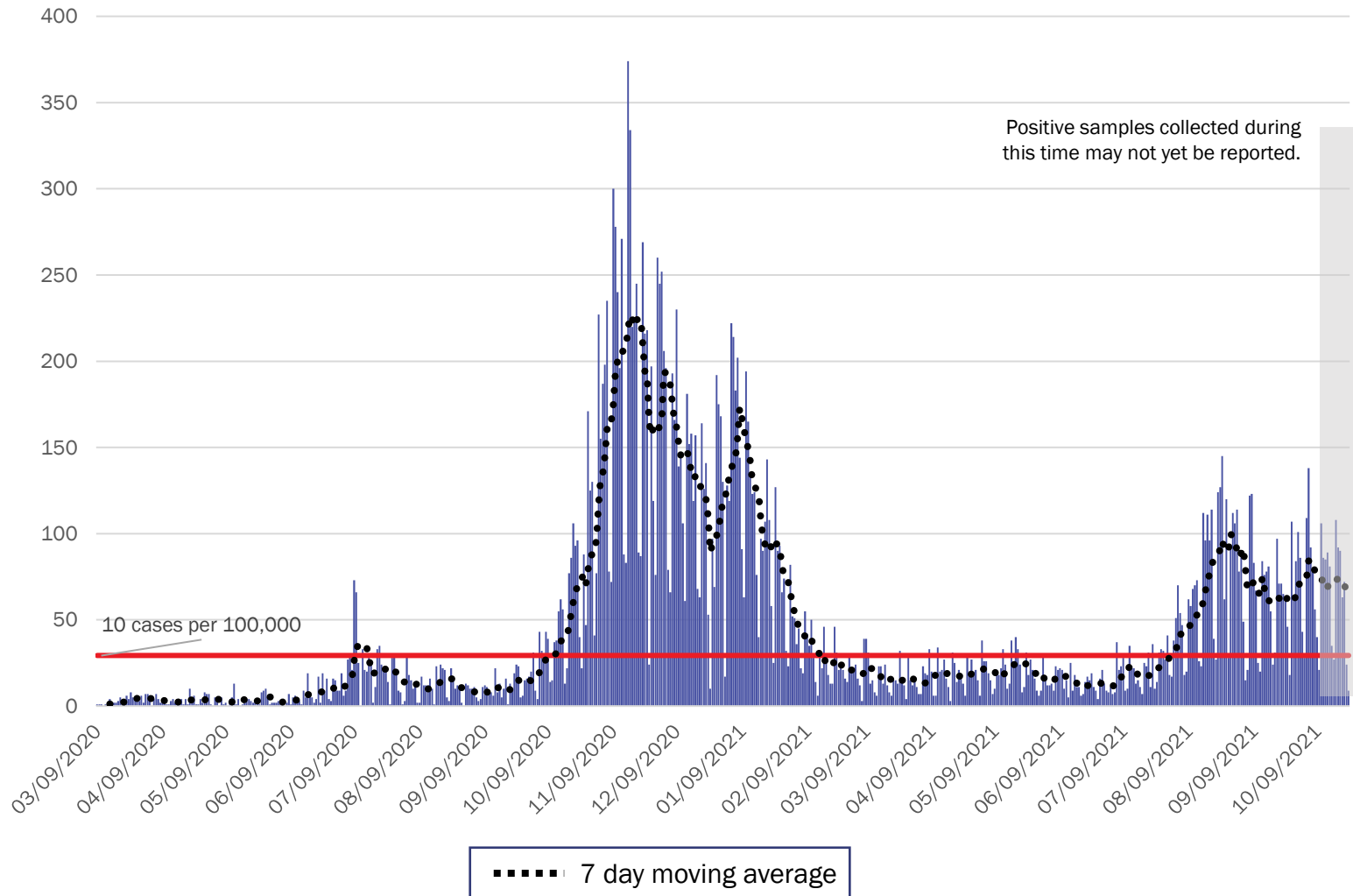
Source: Infectious Disease Epidemiology Bureau, Epidemiology and Response Division 10.25.2021, New Mexico Department of Health.



Investing for tomorrow, delivering today.

1190 S. St. Francis Drive • Santa Fe, NM 87505 • Phone: 505-827-2613 • Fax: 505-827-2530 • nmhealth.org

Northeast Region Case Count by Collection Date with 7 Day Moving Average October 25, 2021



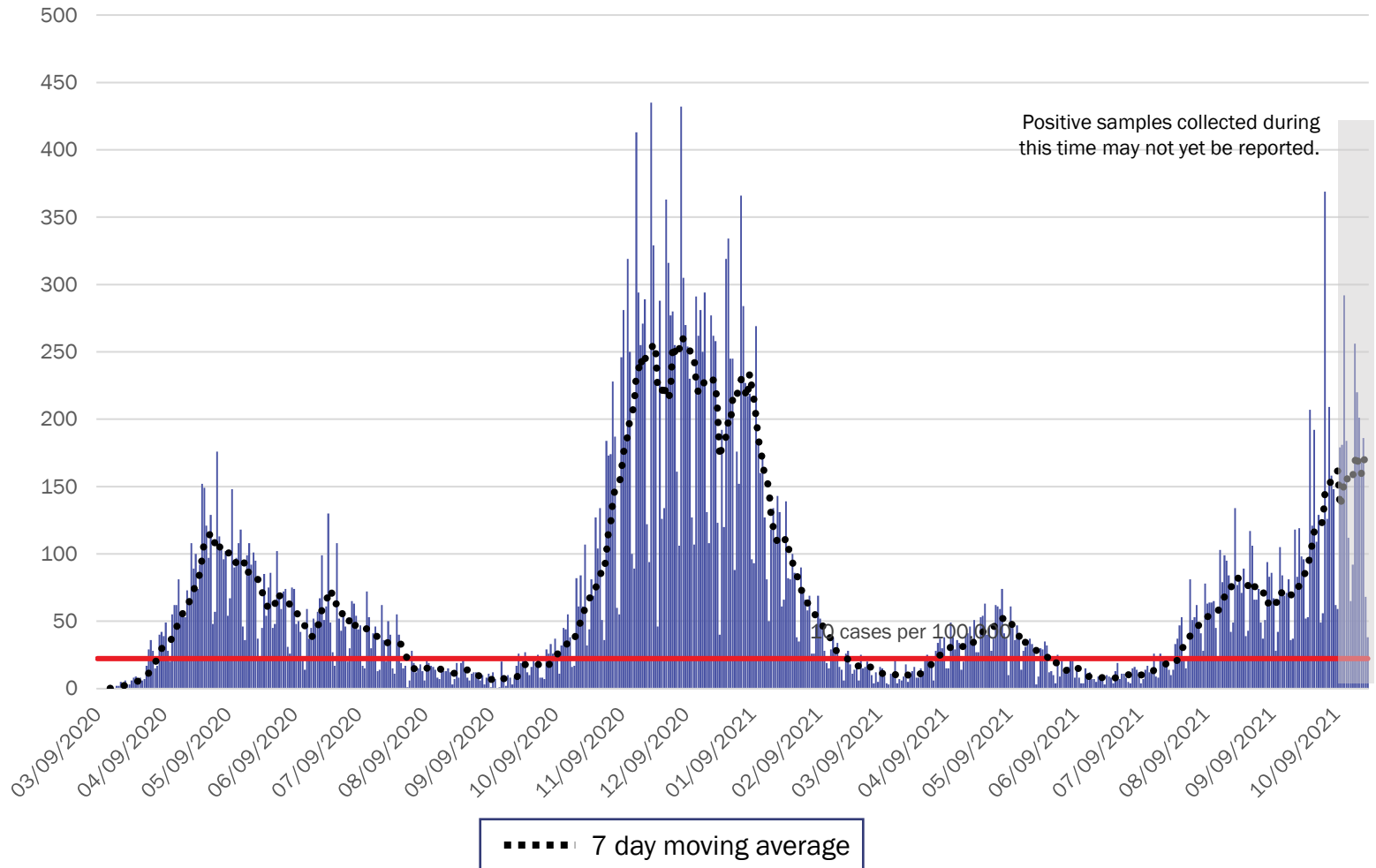
Source: Infectious Disease Epidemiology Bureau, Epidemiology and Response Division 10.25.2021, New Mexico Department of Health.



Investing for tomorrow, delivering today.

1190 S. St. Francis Drive • Santa Fe, NM 87505 • Phone: 505-827-2613 • Fax: 505-827-2530 • nmhealth.org

Northwest Region Case Count by Collection Date with 7 Day Moving Average October 25, 2021



Source: Infectious Disease Epidemiology Bureau, Epidemiology and Response Division 10.25.2021, New Mexico Department of Health.

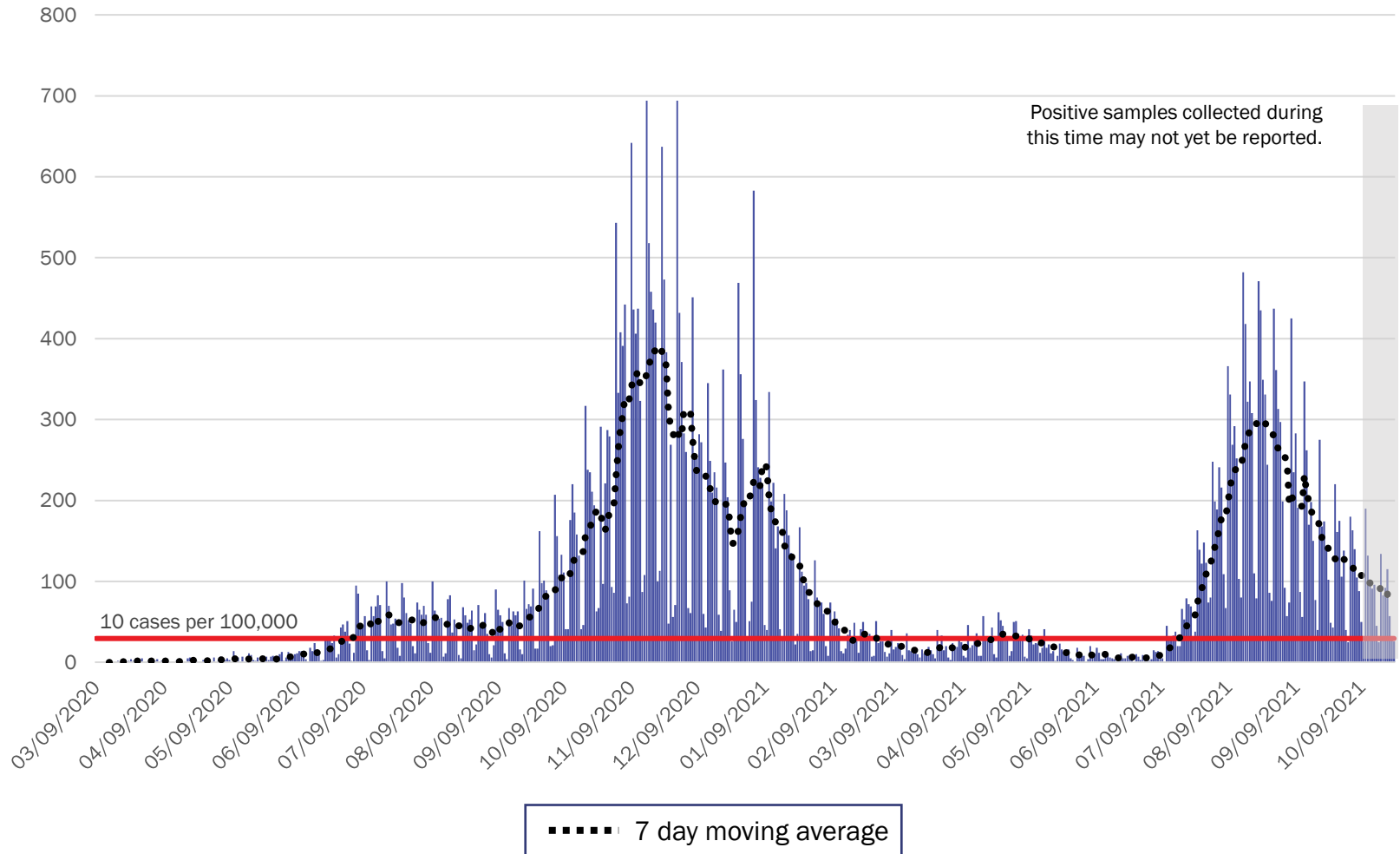


Investing for tomorrow, delivering today.



1190 S. St. Francis Drive • Santa Fe, NM 87505 • Phone: 505-827-2613 • Fax: 505-827-2530 • nmhealth.org

Southeast Region Case Count by Collection Date with 7 Day Moving Average October 25, 2021



Source: Infectious Disease Epidemiology Bureau, Epidemiology and Response Division 10.25.2021, New Mexico Department of Health.

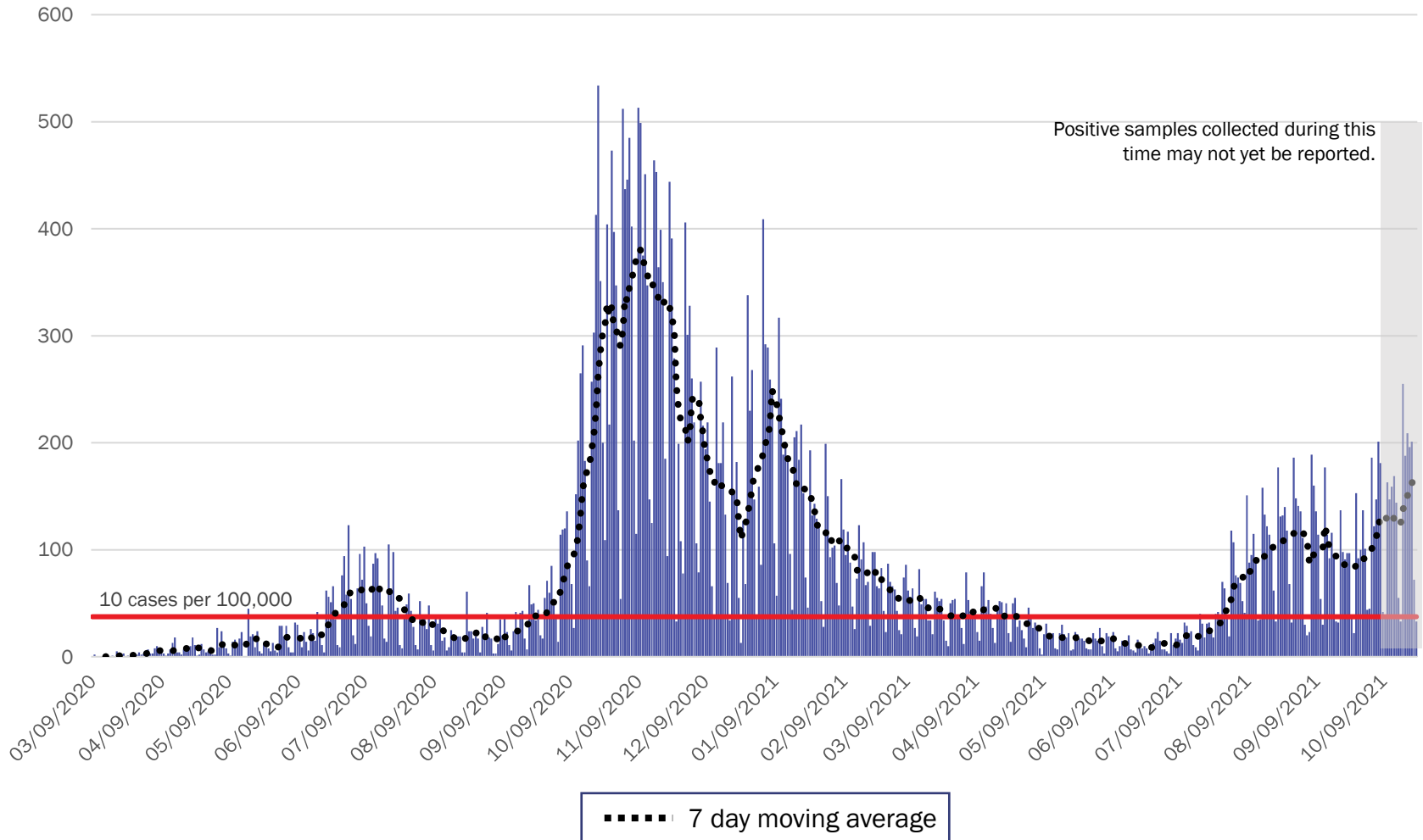


Investing for tomorrow, delivering today.



1190 S. St. Francis Drive • Santa Fe, NM 87505 • Phone: 505-827-2613 • Fax: 505-827-2530 • nmhealth.org

Southwest Region Case Count by Collection Date with 7 Day Moving Average October 25, 2021



Source: Infectious Disease Epidemiology Bureau, Epidemiology and Response Division 10.25.2021, New Mexico Department of Health.



Investing for tomorrow, delivering today.



1190 S. St. Francis Drive • Santa Fe, NM 87505 • Phone: 505-827-2613 • Fax: 505-827-2530 • nmhealth.org

New Mexico Status Updates

- Case count: Statewide, daily case counts seem to have plateaued.
- Hospitalizations: COVID-19 hospitalizations seem to have plateaued.
- Deaths: COVID-19 deaths are decreasing.

For more information, please visit the [Epidemiology Reports](https://cv.nmhealth.org/epidemiology-reports/) page on the NMDOH COVID-19 website: <https://cv.nmhealth.org/epidemiology-reports/>