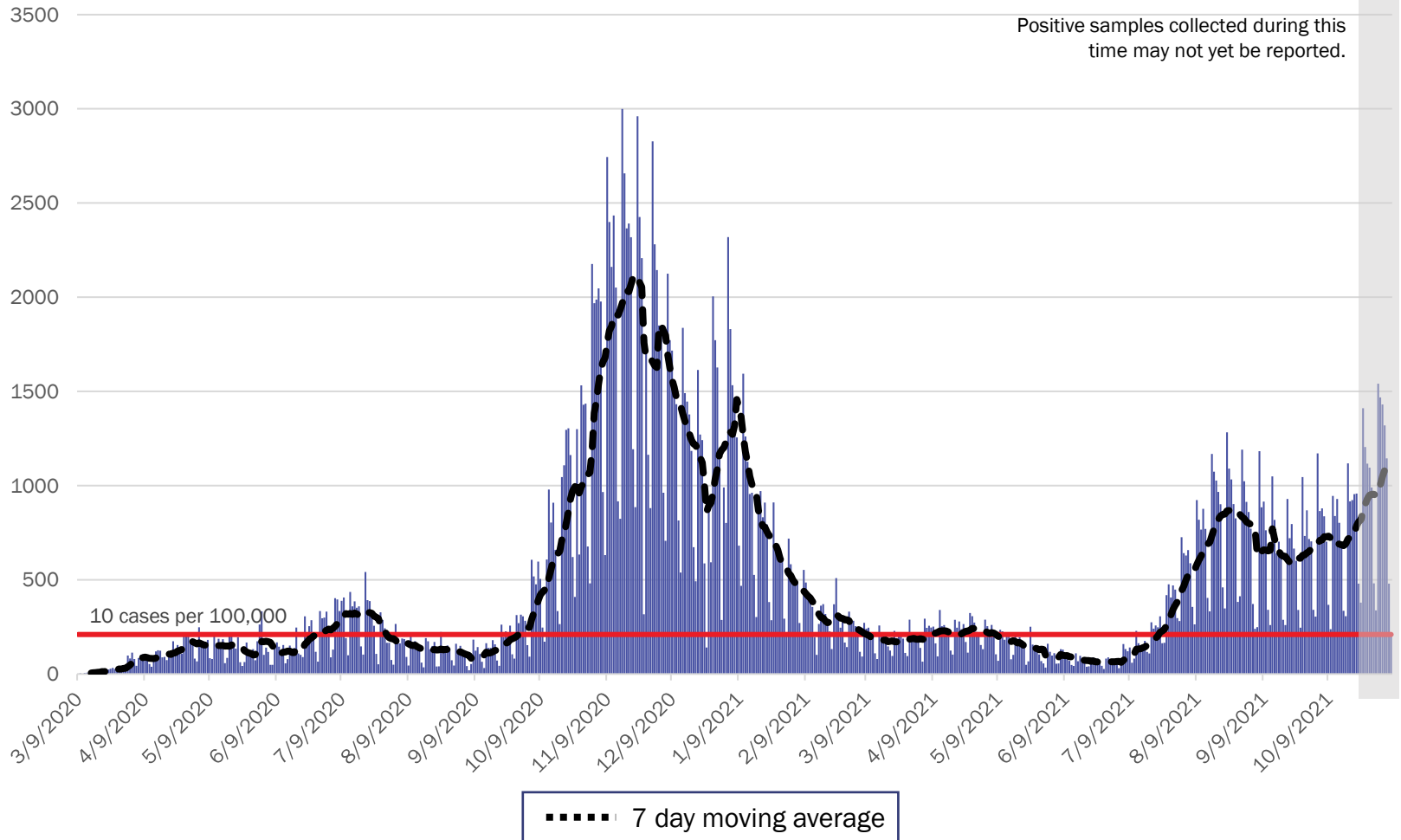


# COVID-19 in New Mexico: Epidemiologic and Modeling Update

November 8, 2021

# New Mexico COVID-19 Cases by Date of Specimen Collection

## November 8, 2021



Source: Infectious Disease Epidemiology Bureau, Epidemiology and Response Division 11.08.2021, New Mexico Department of Health.



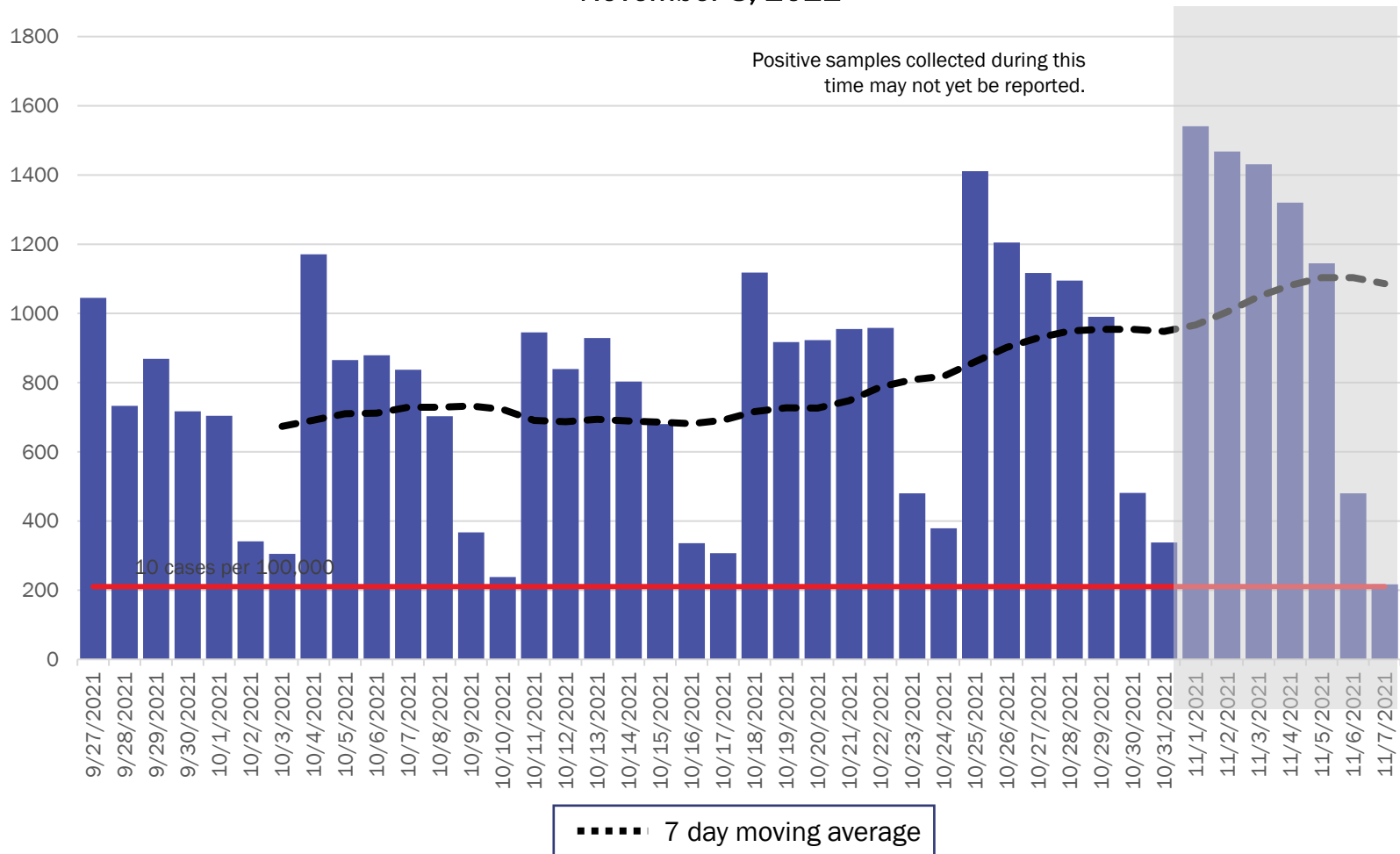
*Investing for tomorrow, delivering today.*

1190 S. St. Francis Drive • Santa Fe, NM 87505 • Phone: 505-827-2613 • Fax: 505-827-2530 • nmhealth.org

# New Mexico COVID-19 Cases by Date of Specimen Collection

## Recent 6 Week View

### November 8, 2021



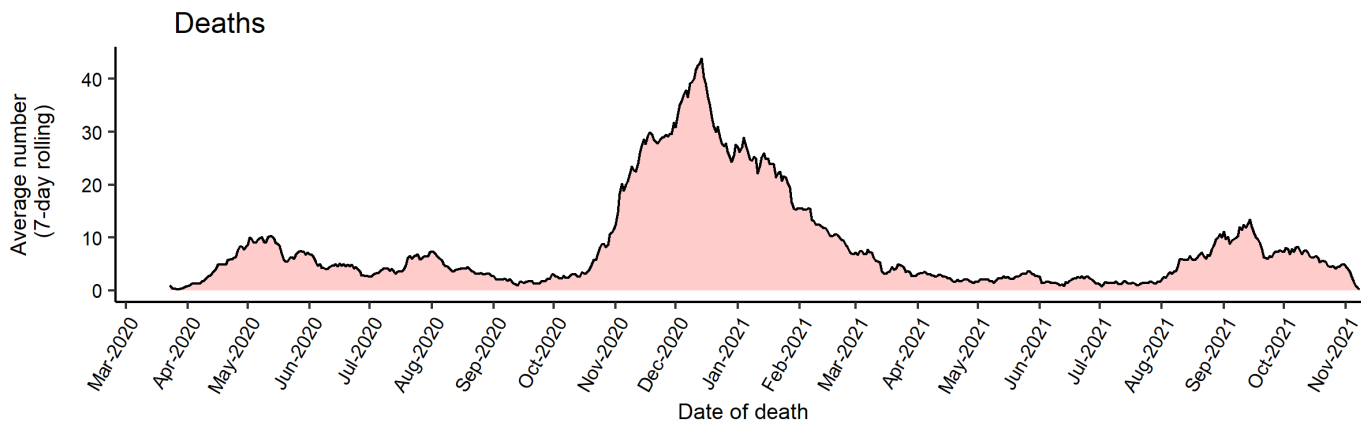
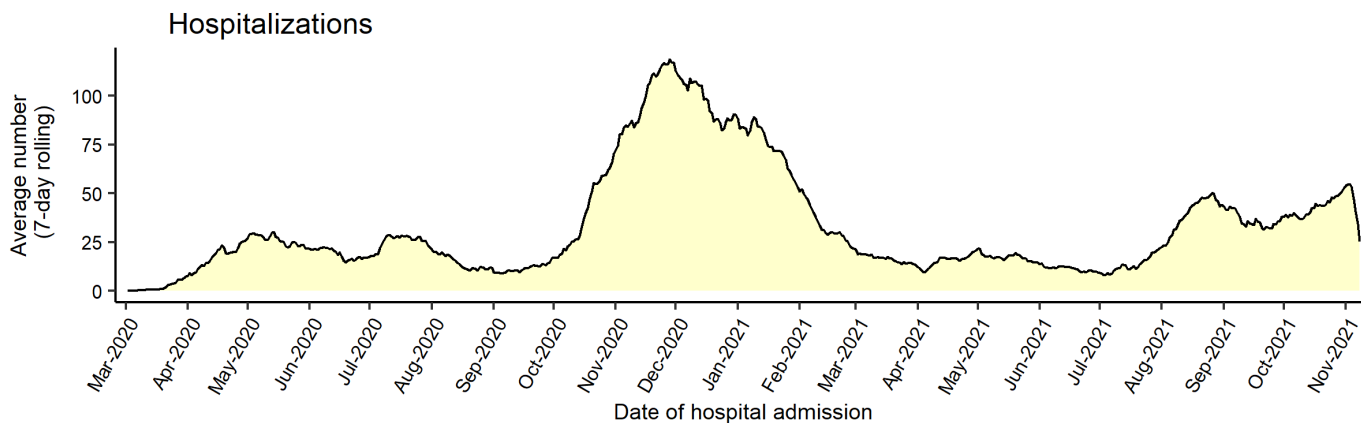
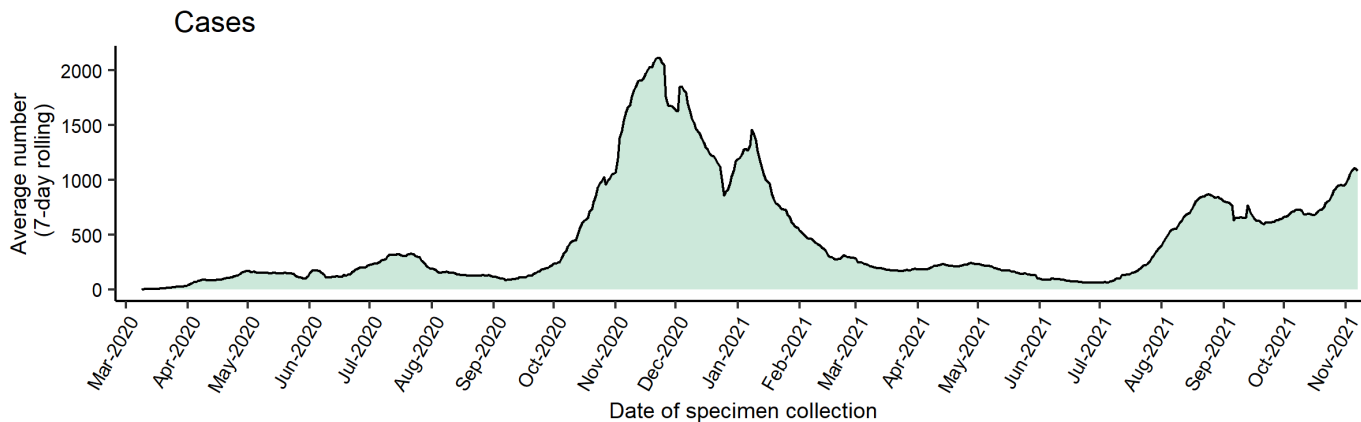
Source: Infectious Disease Epidemiology Bureau, Epidemiology and Response Division 11.08.2021, New Mexico Department of Health.



*Investing for tomorrow, delivering today.*

1190 S. St. Francis Drive • Santa Fe, NM 87505 • Phone: 505-827-2613 • Fax: 505-827-2530 • nmhealth.org

# Average number (7-day rolling average) of cases, hospitalizations, and deaths over time



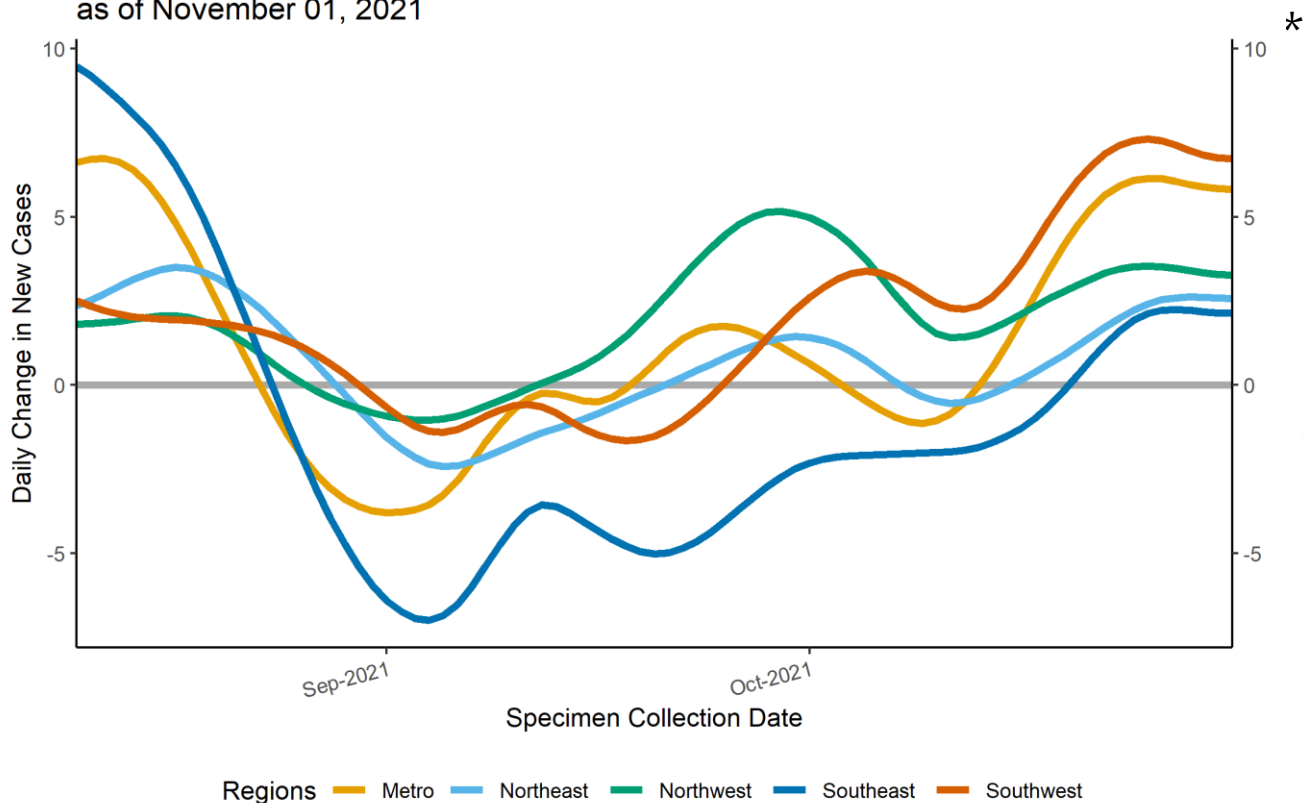
*Note: Cases, hospitalizations, and deaths may not yet be reported in 7 or more days.*

*As of 11/08/21*



# Epidemic Growth Acceleration

Daily Change in New COVID-19 Cases, by New Mexico Region, as of November 01, 2021

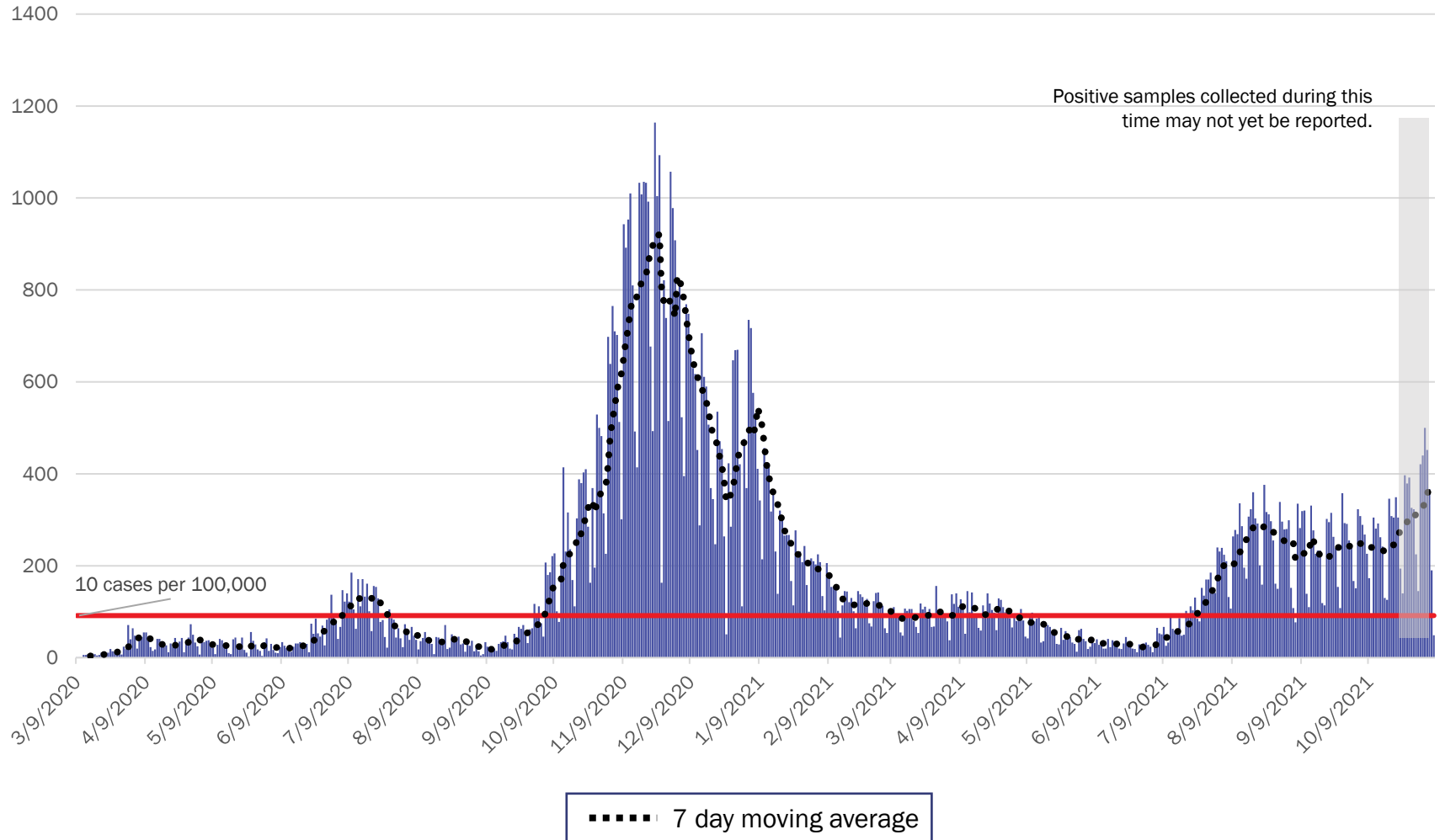


| Region      | Growth Acceleration October 25, 2021 |
|-------------|--------------------------------------|
| 1 Metro     | 6.1                                  |
| 2 Northeast | 2.4                                  |
| 3 Northwest | 3.5                                  |
| 4 Southeast | 2.1                                  |
| 5 Southwest | 7.3                                  |

\*Positive specimens collected in the last 7 or more days may not yet be reported to NMDOH. Case counts and growth acceleration during this time are underestimated.

Source: Infectious Disease Epidemiology Bureau, Epidemiology and Response Division 11.08.2021, New Mexico Department of Health.

# Metro Region Case Count by Collection Date with 7 Day Moving Average November 8, 2021



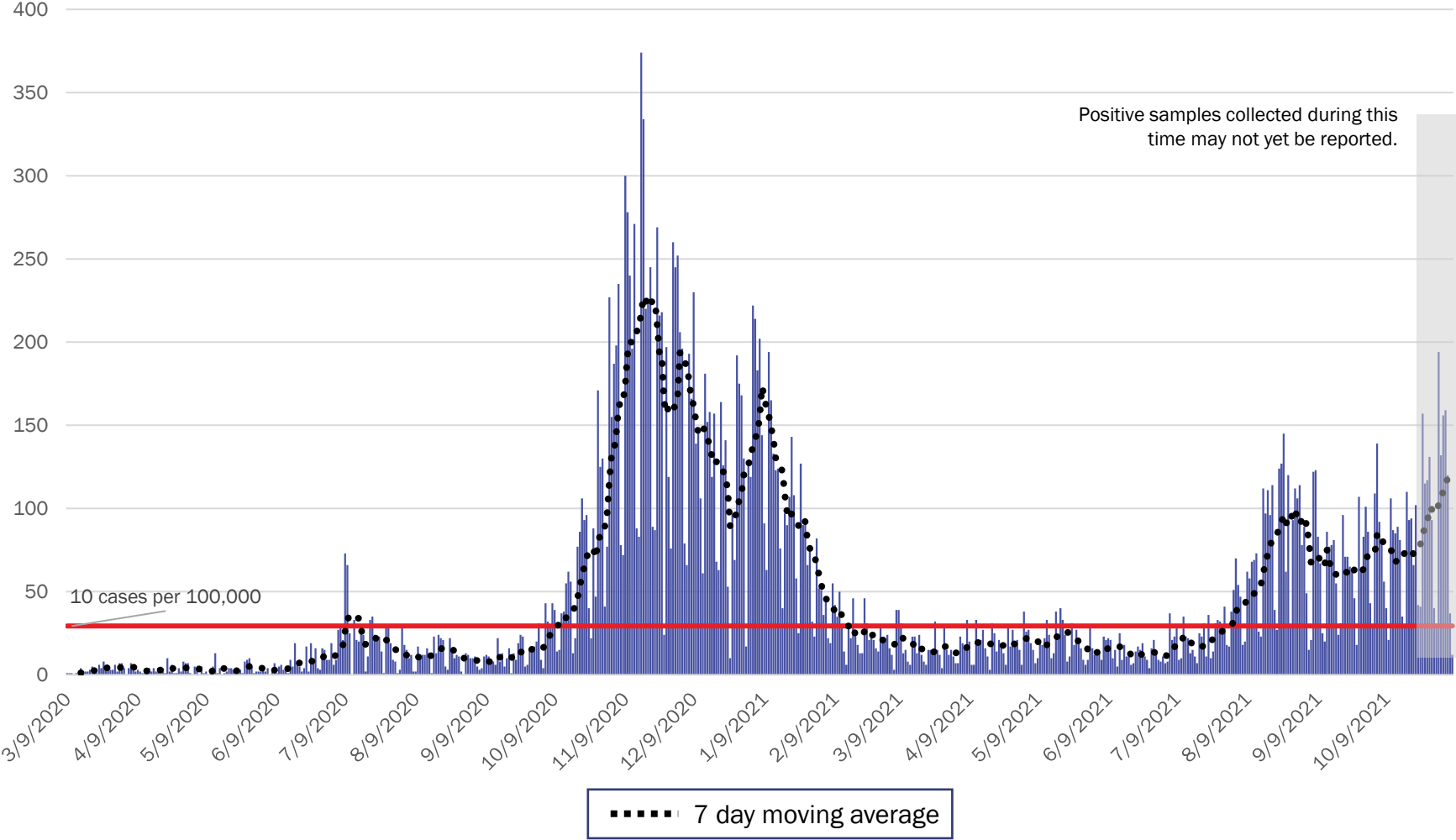
Source: Infectious Disease Epidemiology Bureau, Epidemiology and Response Division 11.08.2021, New Mexico Department of Health.



*Investing for tomorrow, delivering today.*

1190 S. St. Francis Drive • Santa Fe, NM 87505 • Phone: 505-827-2613 • Fax: 505-827-2530 • nmhealth.org

# Northeast Region Case Count by Collection Date with 7 Day Moving Average November 8, 2021



Source: Infectious Disease Epidemiology Bureau, Epidemiology and Response Division 11.08.2021, New Mexico Department of Health.

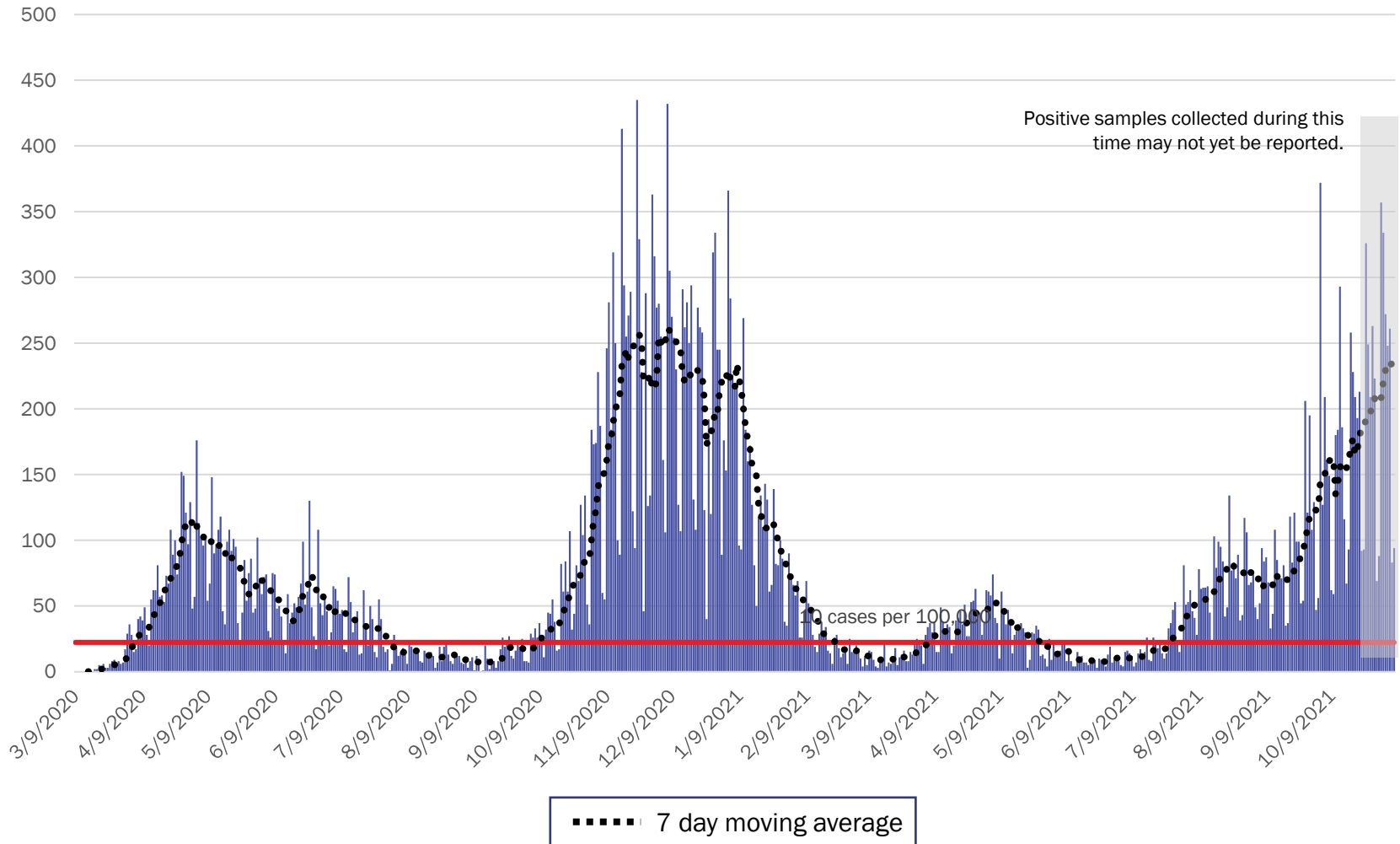


*Investing for tomorrow, delivering today.*



1190 S. St. Francis Drive • Santa Fe, NM 87505 • Phone: 505-827-2613 • Fax: 505-827-2530 • nmhealth.org

# Northwest Region Case Count by Collection Date with 7 Day Moving Average November 8, 2021



Source: Infectious Disease Epidemiology Bureau, Epidemiology and Response Division 11.08.2021, New Mexico Department of Health.



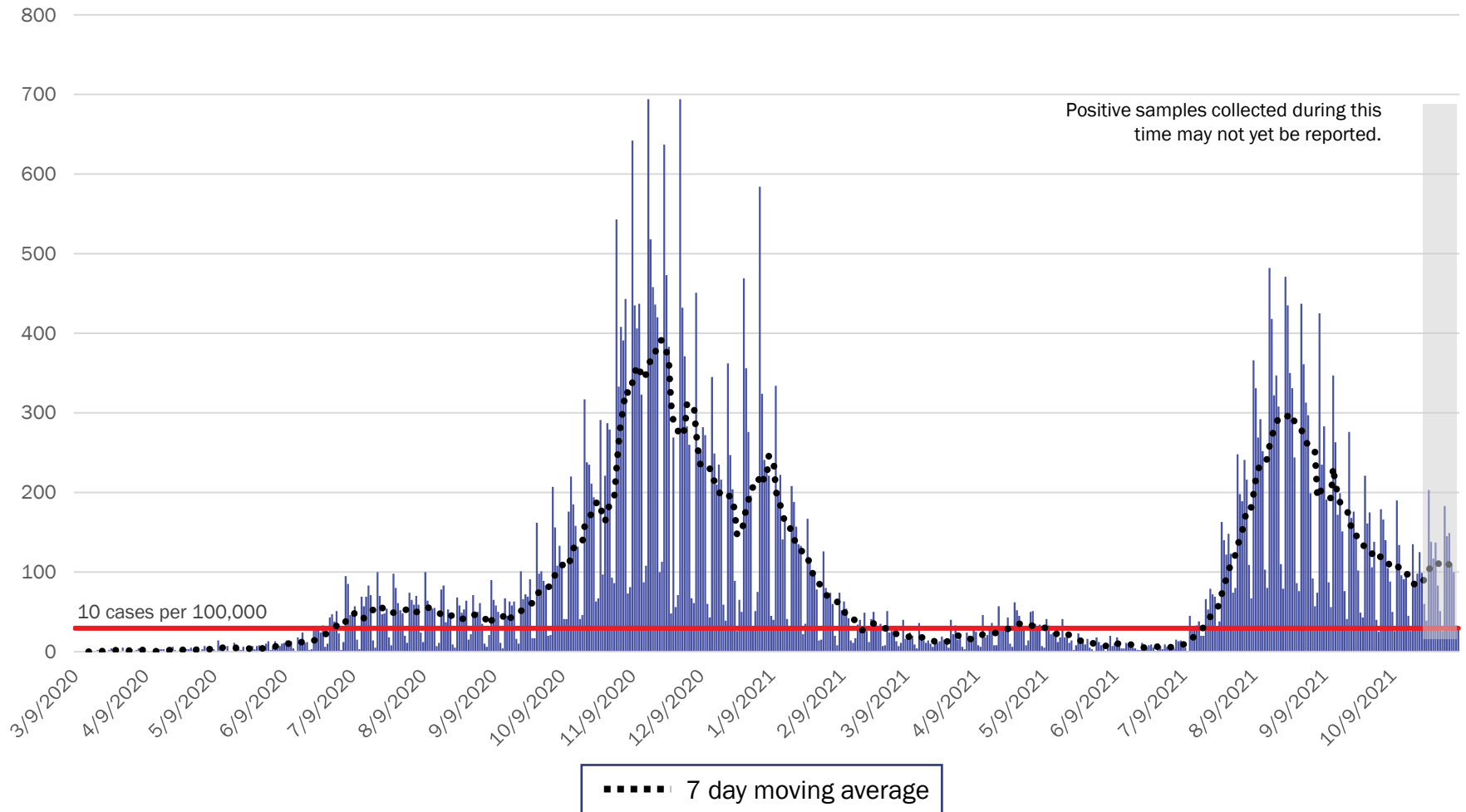
*Investing for tomorrow, delivering today.*



1190 S. St. Francis Drive • Santa Fe, NM 87505 • Phone: 505-827-2613 • Fax: 505-827-2530 • nmhealth.org



# Southeast Region Case Count by Collection Date with 7 Day Moving Average November 8, 2021



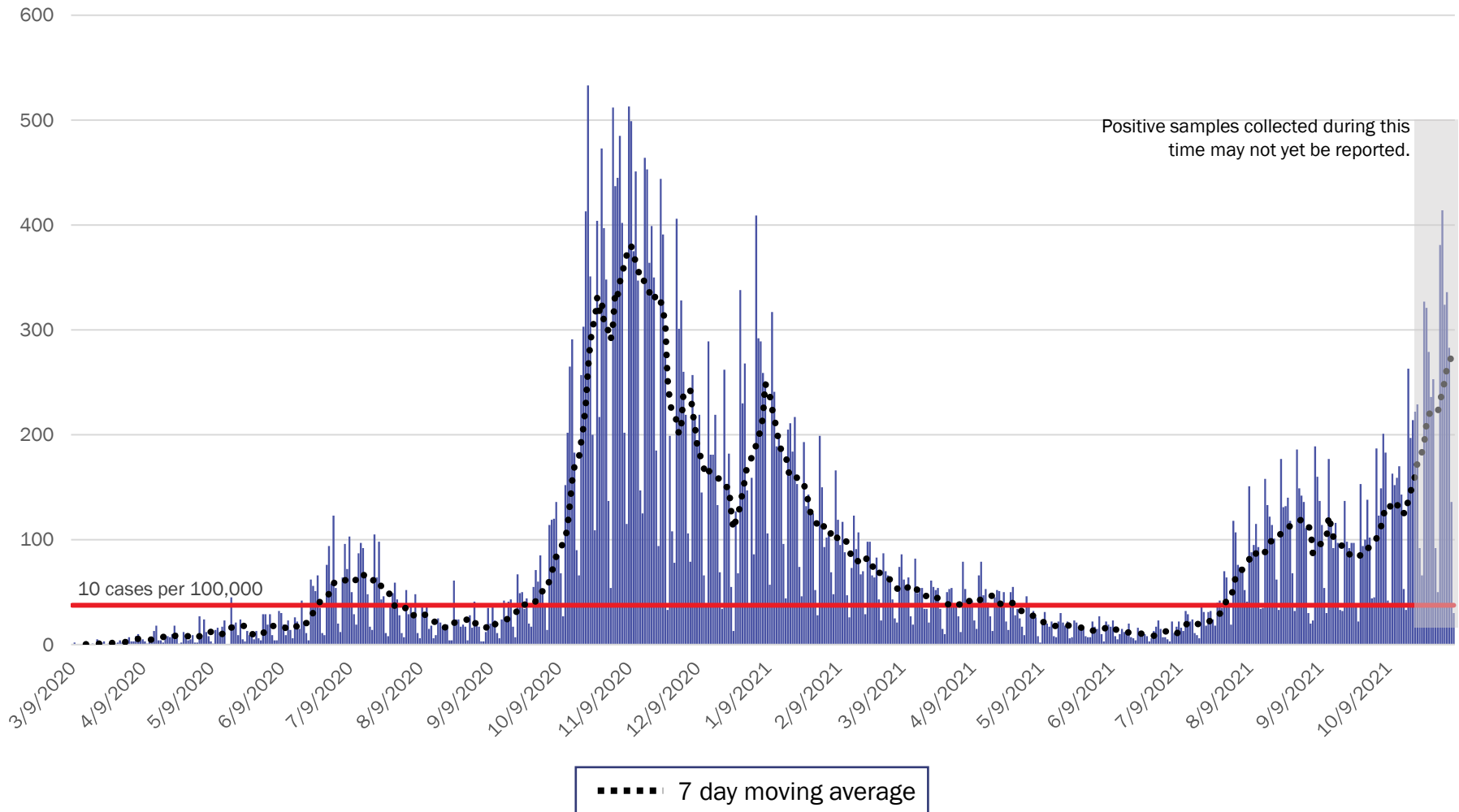
Source: Infectious Disease Epidemiology Bureau, Epidemiology and Response Division 11.08.2021, New Mexico Department of Health.



*Investing for tomorrow, delivering today.*

1190 S. St. Francis Drive • Santa Fe, NM 87505 • Phone: 505-827-2613 • Fax: 505-827-2530 • nmhealth.org

# Southwest Region Case Count by Collection Date with 7 Day Moving Average November 8, 2021



Source: Infectious Disease Epidemiology Bureau, Epidemiology and Response Division 11.08.2021, New Mexico Department of Health.



*Investing for tomorrow, delivering today.*



# New Mexico Status Updates

- Case count: Statewide, daily case counts are increasing.
- Hospitalizations: COVID-19 hospitalizations are increasing.
- Deaths: COVID-19 deaths seem to have plateaued.

For more information, please visit the [Epidemiology Reports](https://cv.nmhealth.org/epidemiology-reports/) page on the NMDOH COVID-19 website: <https://cv.nmhealth.org/epidemiology-reports/>