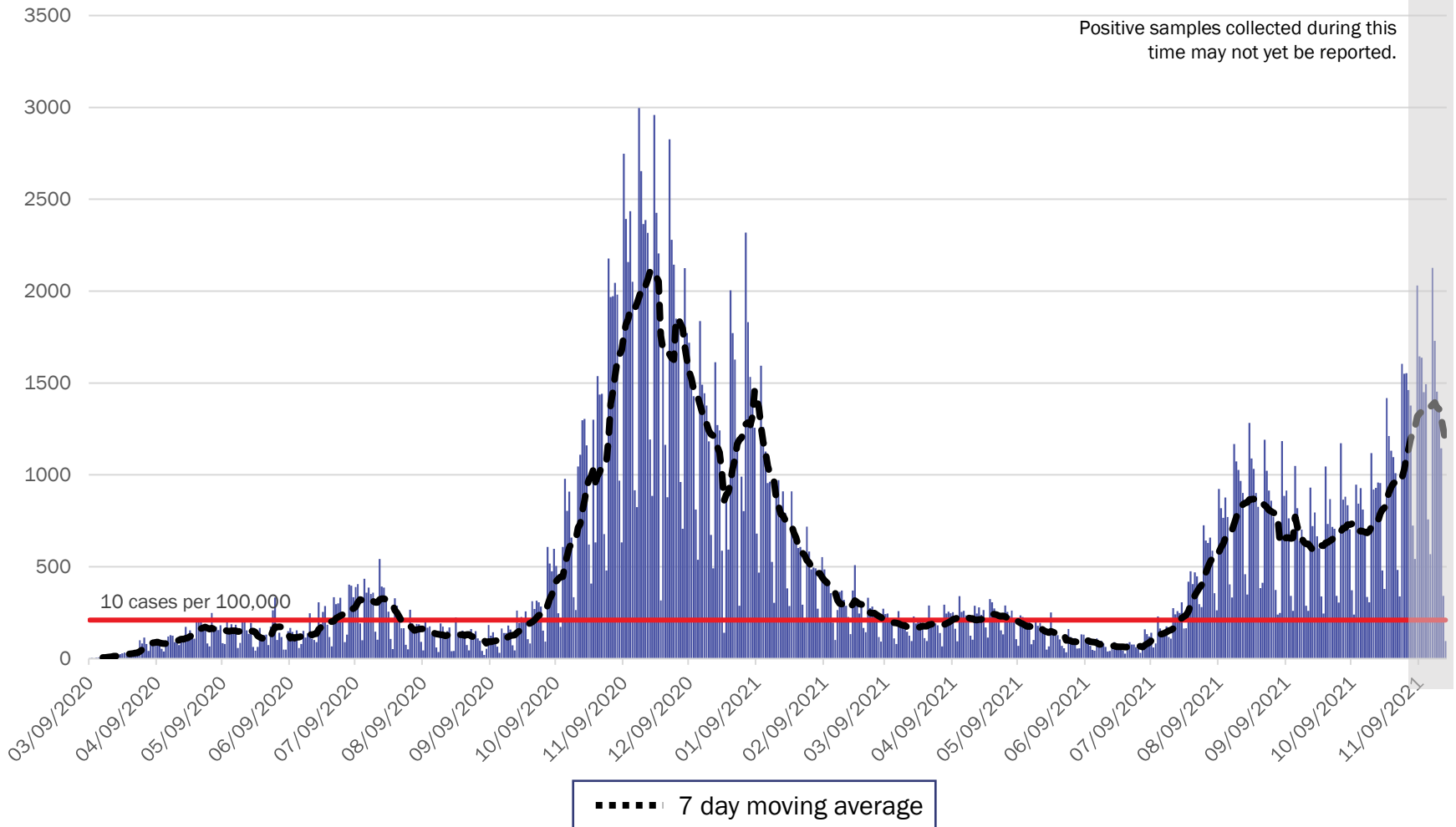


# COVID-19 in New Mexico: Epidemiologic and Modeling Update

November 22, 2021

# New Mexico COVID-19 Cases by Date of Specimen Collection November 22, 2021



Source: Infectious Disease Epidemiology Bureau, Epidemiology and Response Division 11.22.2021, New Mexico Department of Health.



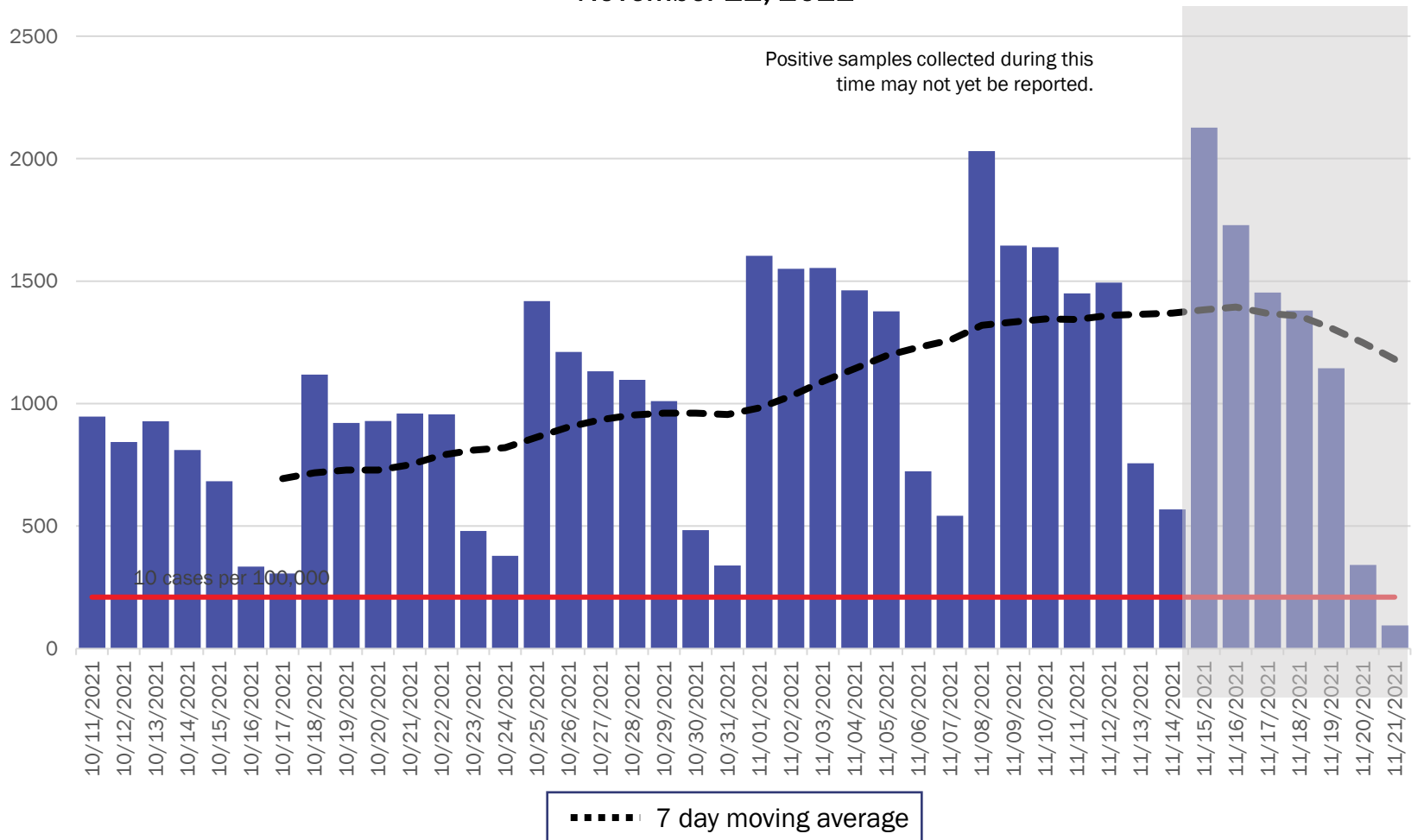
*Investing for tomorrow, delivering today.*

1190 S. St. Francis Drive • Santa Fe, NM 87505 • Phone: 505-827-2613 • Fax: 505-827-2530 • nmhealth.org

# New Mexico COVID-19 Cases by Date of Specimen Collection

## Recent 6 Week View

### November 22, 2021



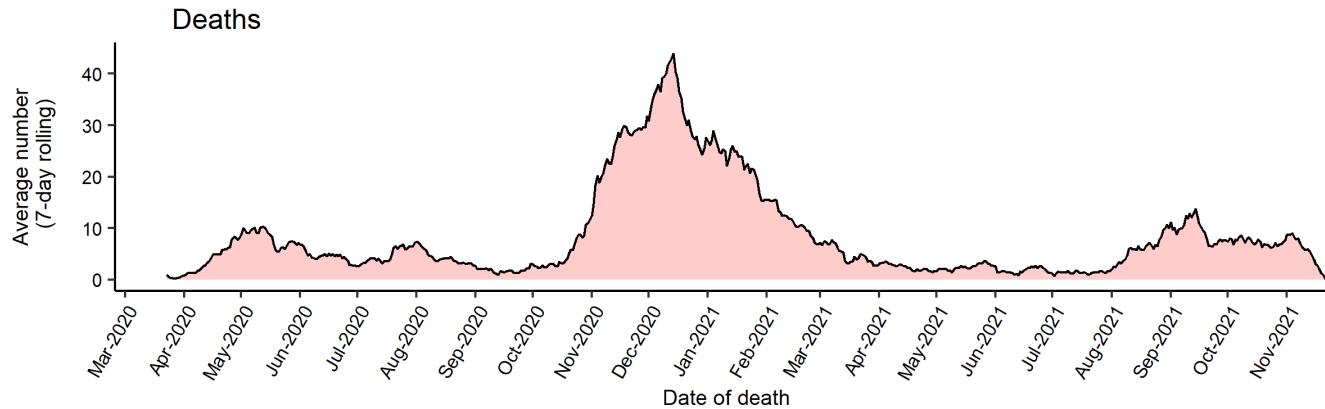
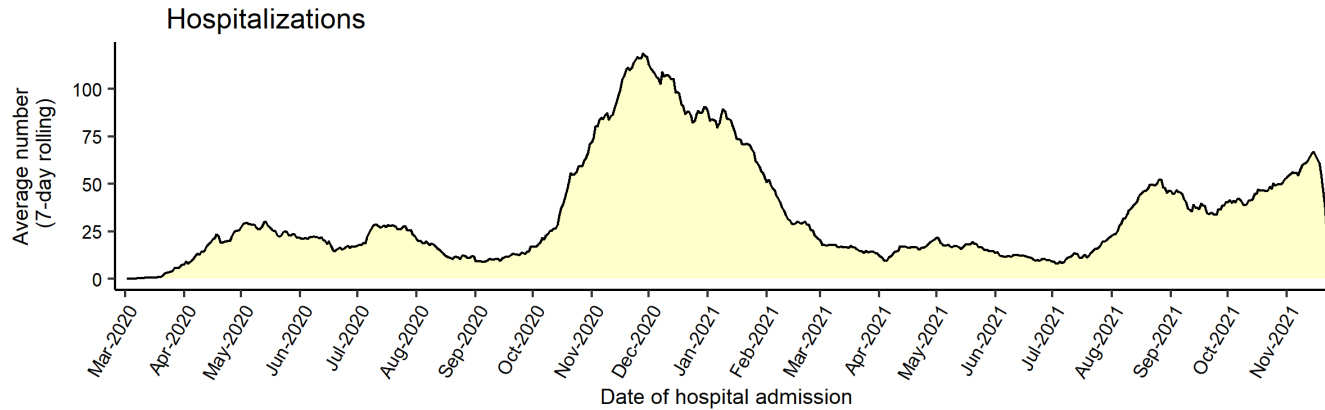
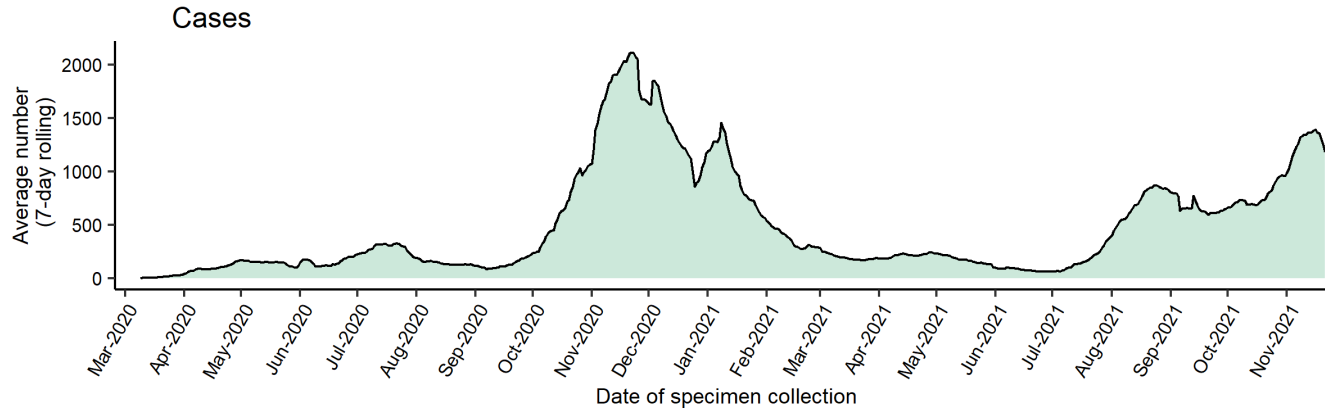
Source: Infectious Disease Epidemiology Bureau, Epidemiology and Response Division 11.22.2021, New Mexico Department of Health.



*Investing for tomorrow, delivering today.*

1190 S. St. Francis Drive • Santa Fe, NM 87505 • Phone: 505-827-2613 • Fax: 505-827-2530 • nmhealth.org

# Average number (7-day rolling average) of cases, hospitalizations, and deaths over time



Note: Cases, hospitalizations, and deaths may not yet be reported in 7 or more days.

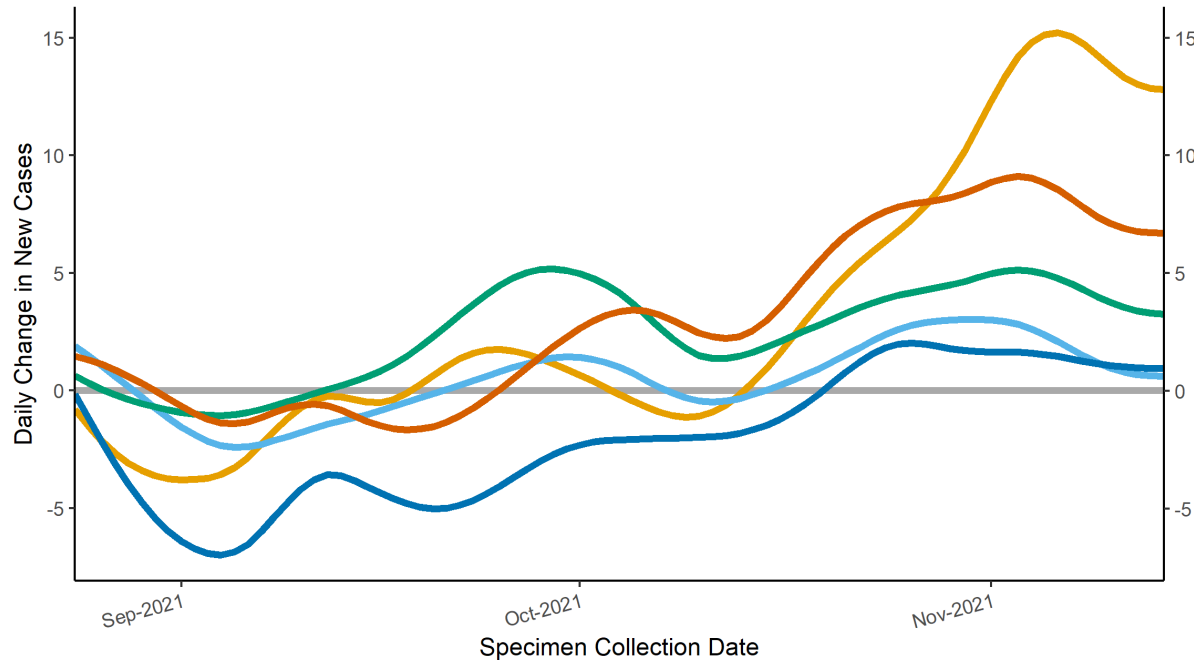
As of 11/22/21



# Epidemic Growth Acceleration

Daily Change in New COVID-19 Cases, by New Mexico Region, as of November 15, 2021

\*



Regions — Metro — Northeast — Northwest — Southeast — Southwest

Region	Growth Acceleration November 08, 2021	Growth Acceleration November 15, 2021
1 Metro	14.7	12.8
2 Northeast	1.5	0.6
3 Northwest	4.3	3.3
4 Southeast	1.3	0.9
5 Southwest	7.8	6.7

\*Positive specimens collected in the last 7 or more days may not yet be reported to NMDOH. Case counts and growth acceleration during this time are underestimated.

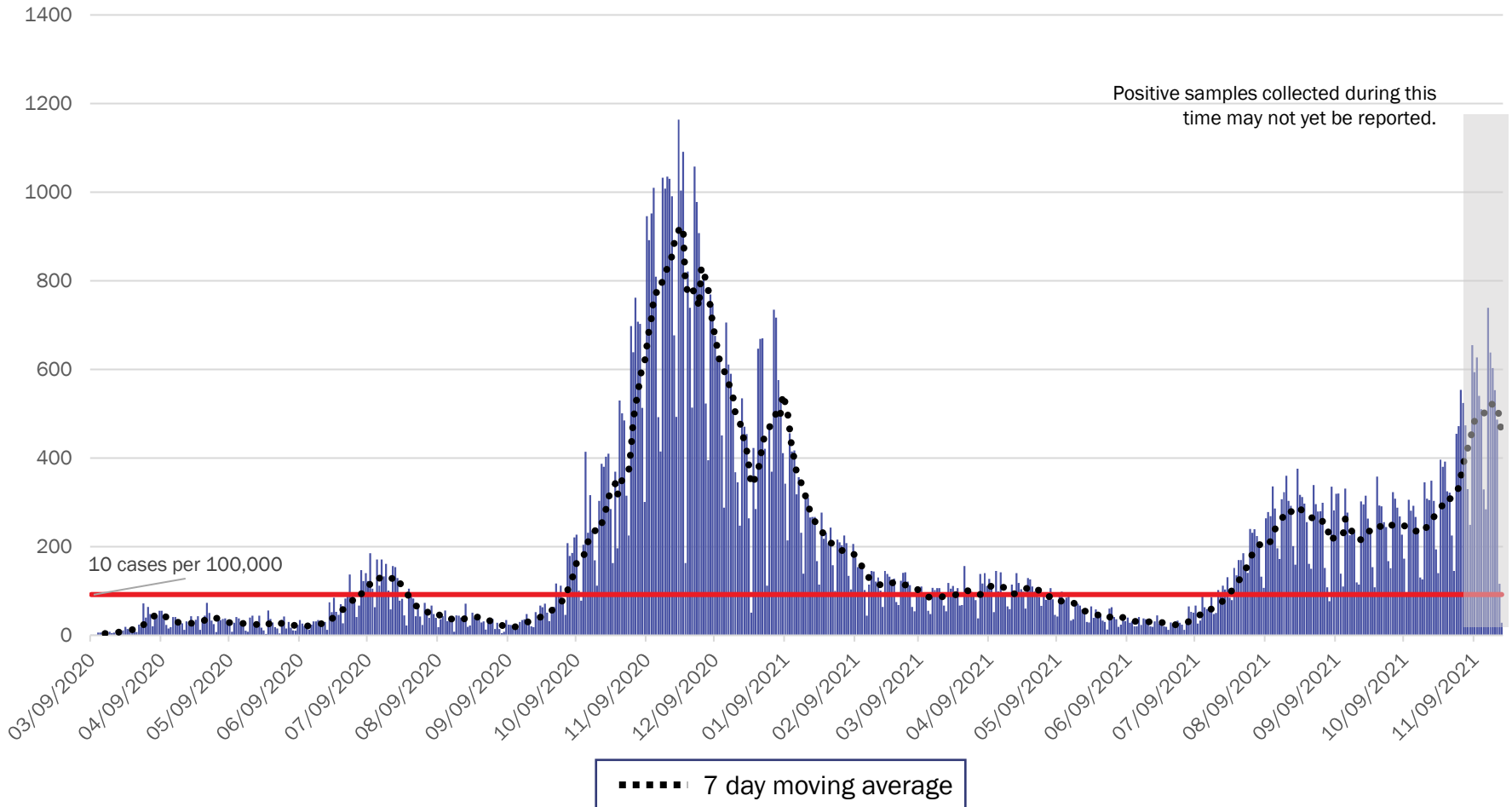
Source: Infectious Disease Epidemiology Bureau, Epidemiology and Response Division 11.22.2021, New Mexico Department of Health.



*Investing for tomorrow, delivering today.*

1190 S. St. Francis Drive • Santa Fe, NM 87505 • Phone: 505-827-2613 • Fax: 505-827-2530 • nmhealth.org

# Metro Region Case Count by Collection Date with 7 Day Moving Average November 22, 2021



Source: Infectious Disease Epidemiology Bureau, Epidemiology and Response Division 11.22.2021, New Mexico Department of Health.

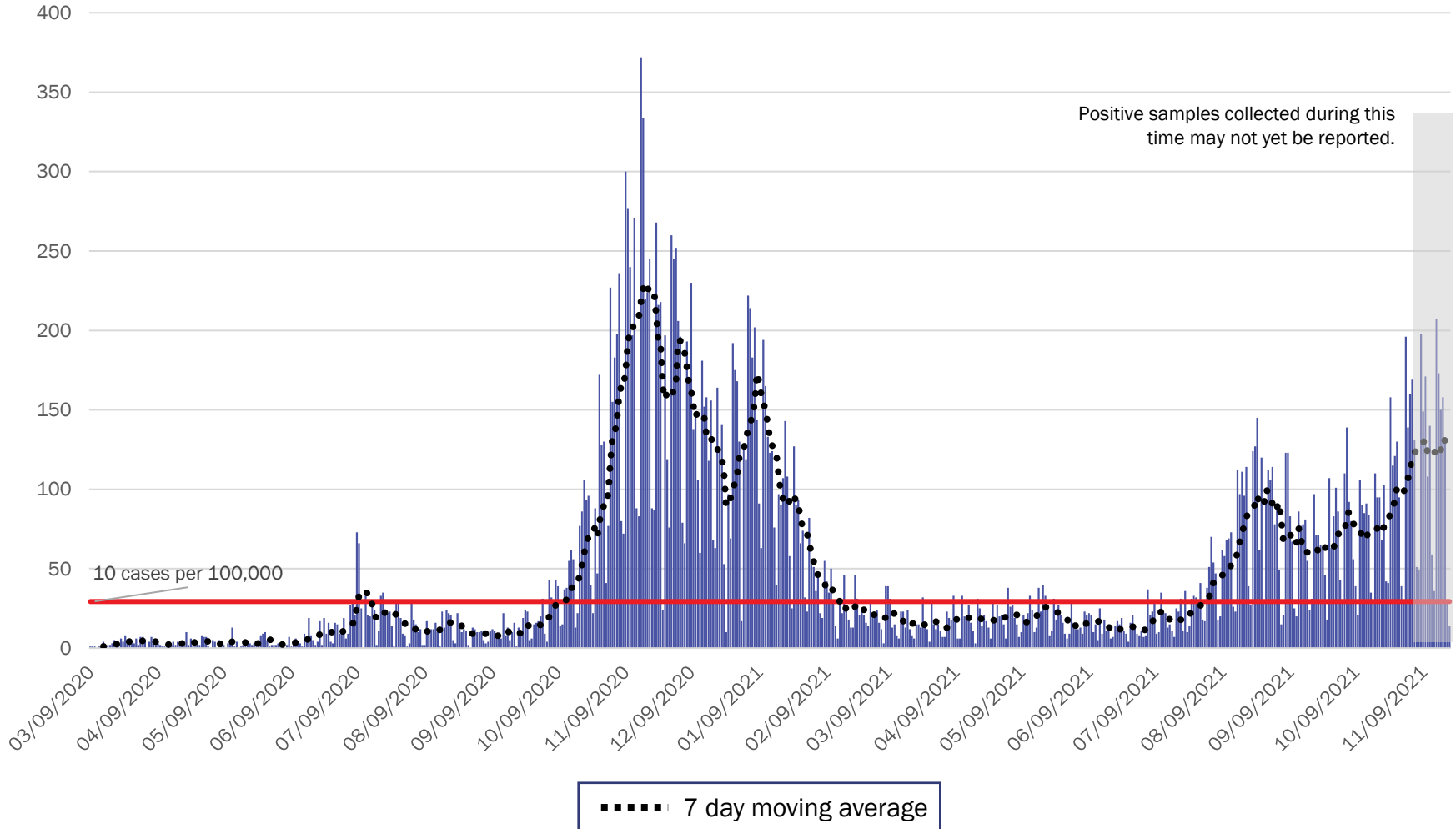


*Investing for tomorrow, delivering today.*

1190 S. St. Francis Drive • Santa Fe, NM 87505 • Phone: 505-827-2613 • Fax: 505-827-2530 • nmhealth.org

# Northeast Region Case Count by Collection Date with 7 Day Moving Average

## November 22, 2021



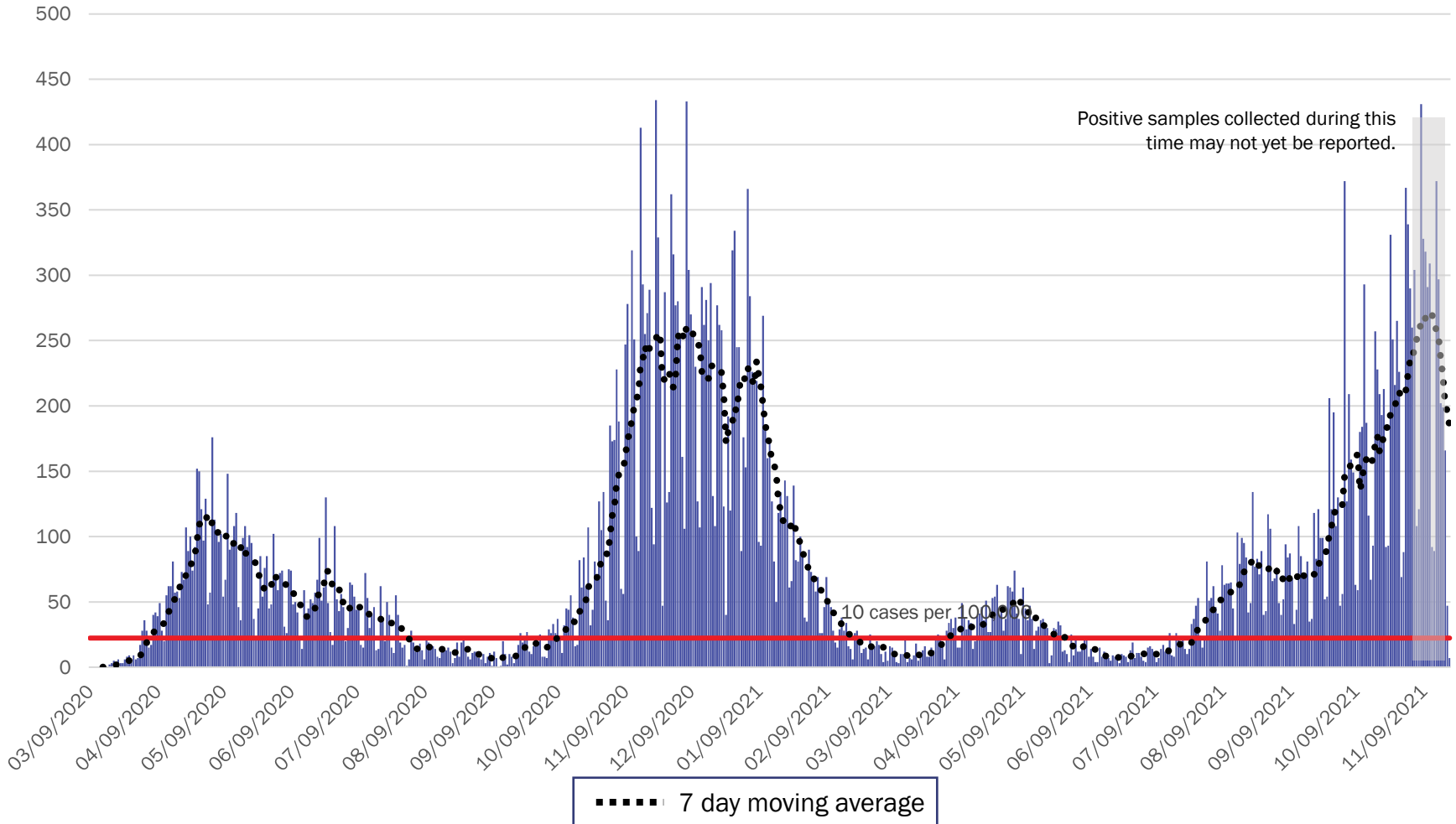
Source: Infectious Disease Epidemiology Bureau, Epidemiology and Response Division 11.22.2021, New Mexico Department of Health.



*Investing for tomorrow, delivering today.*

1190 S. St. Francis Drive • Santa Fe, NM 87505 • Phone: 505-827-2613 • Fax: 505-827-2530 • nmhealth.org

# Northwest Region Case Count by Collection Date with 7 Day Moving Average November 22, 2021



Source: Infectious Disease Epidemiology Bureau, Epidemiology and Response Division 11.22.2021, New Mexico Department of Health.



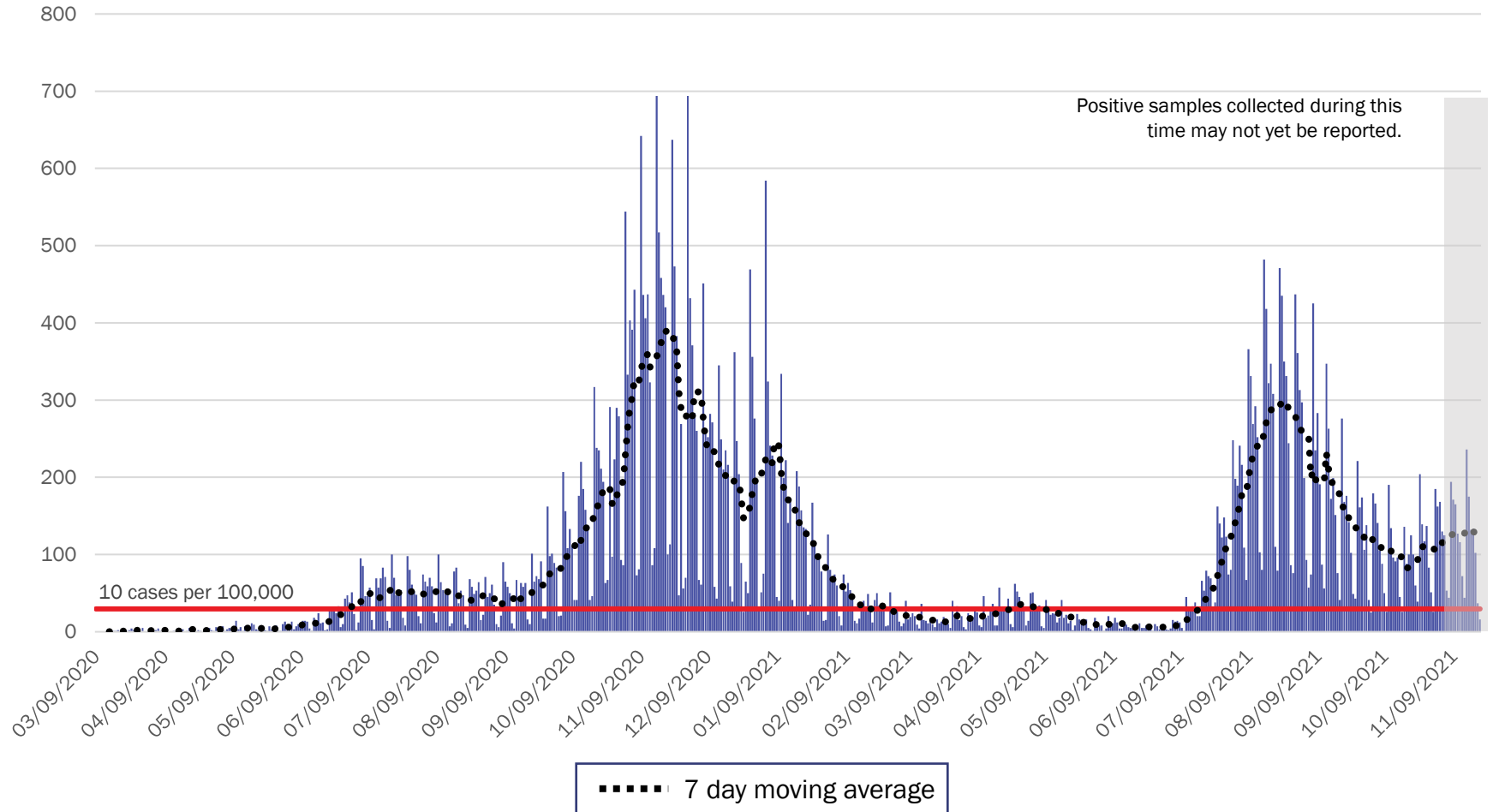
*Investing for tomorrow, delivering today.*



1190 S. St. Francis Drive • Santa Fe, NM 87505 • Phone: 505-827-2613 • Fax: 505-827-2530 • nmhealth.org

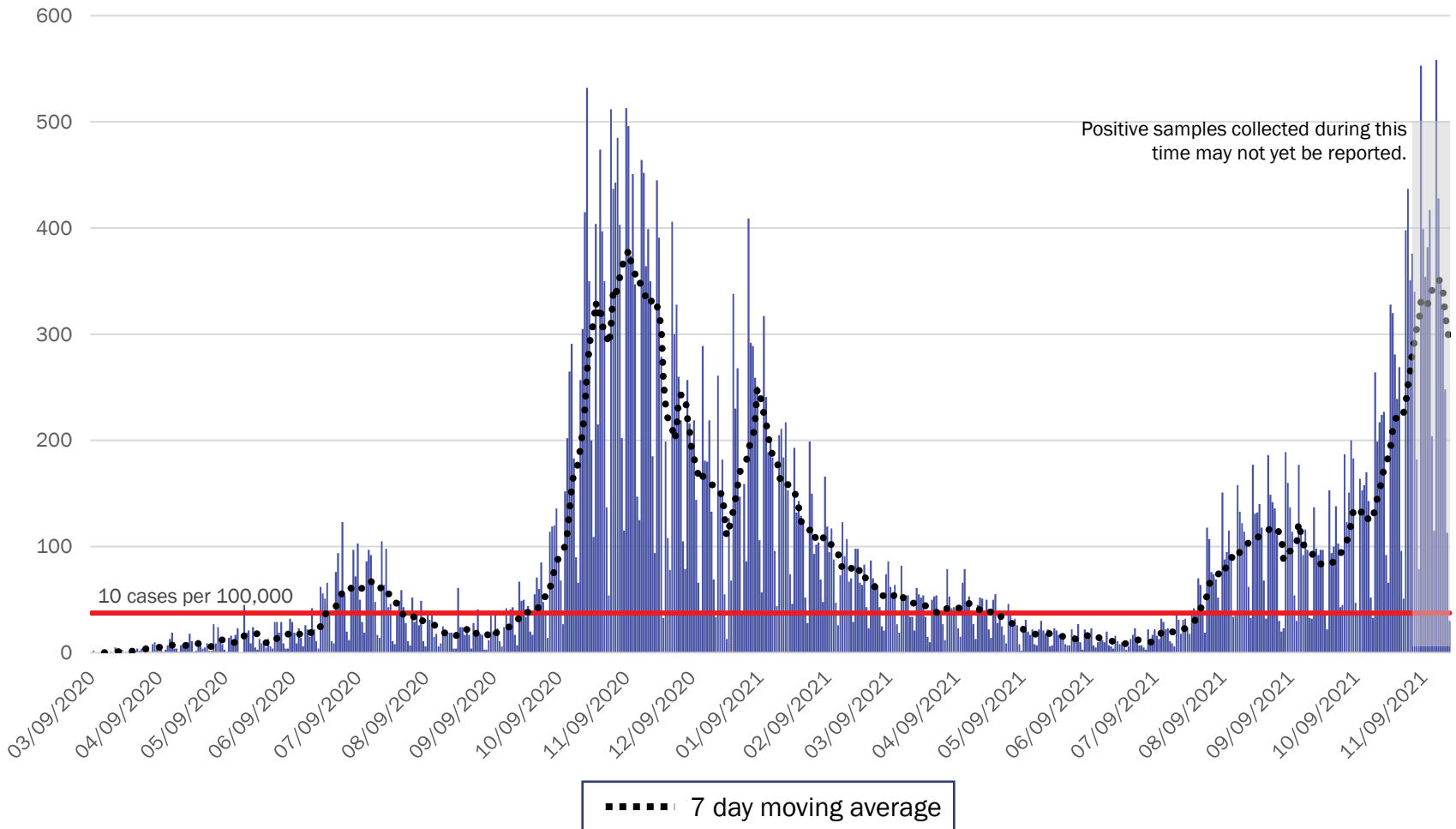


## Southeast Region Case Count by Collection Date with 7 Day Moving Average November 22, 2021



Source: Infectious Disease Epidemiology Bureau, Epidemiology and Response Division 11.22.2021, New Mexico Department of Health.

# Southwest Region Case Count by Collection Date with 7 Day Moving Average November 22, 2021



Source: Infectious Disease Epidemiology Bureau, Epidemiology and Response Division 11.22.2021, New Mexico Department of Health.



*Investing for tomorrow, delivering today.*

1190 S. St. Francis Drive • Santa Fe, NM 87505 • Phone: 505-827-2613 • Fax: 505-827-2530 • nmhealth.org

# New Mexico Status Updates

- Case count: Statewide, daily case counts may be decreasing.
- Hospitalizations: COVID-19 hospitalizations are increasing.
- Deaths: COVID-19 deaths may be plateauing.

For more information, please visit the [Epidemiology Reports](https://cv.nmhealth.org/epidemiology-reports/) page on the NMDOH COVID-19 website: <https://cv.nmhealth.org/epidemiology-reports/>