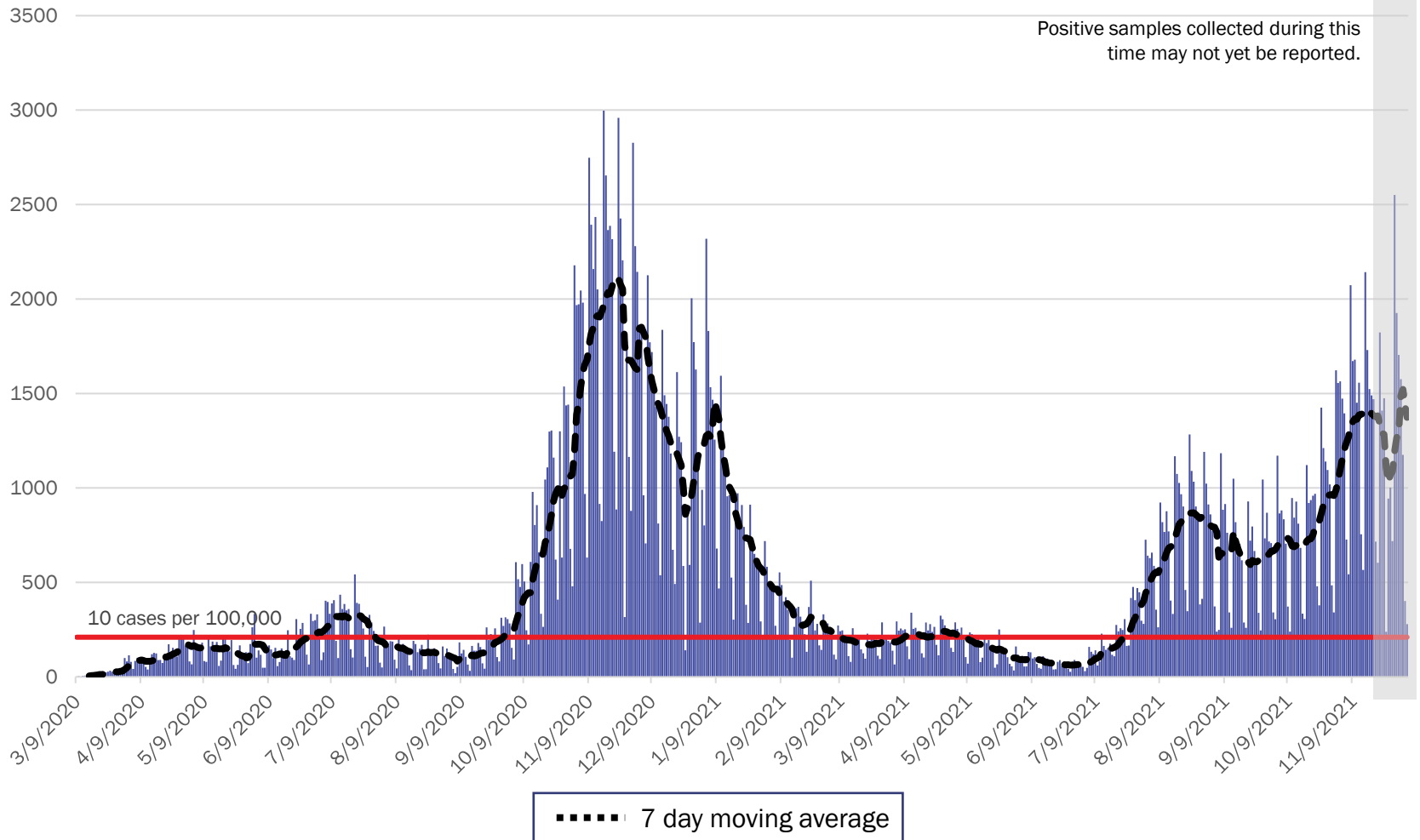


# COVID-19 in New Mexico: Epidemiologic and Modeling Update

December 6, 2021

# New Mexico COVID-19 Cases by Date of Specimen Collection December 6, 2021



Source: Infectious Disease Epidemiology Bureau, Epidemiology and Response Division 12.06.2021, New Mexico Department of Health.



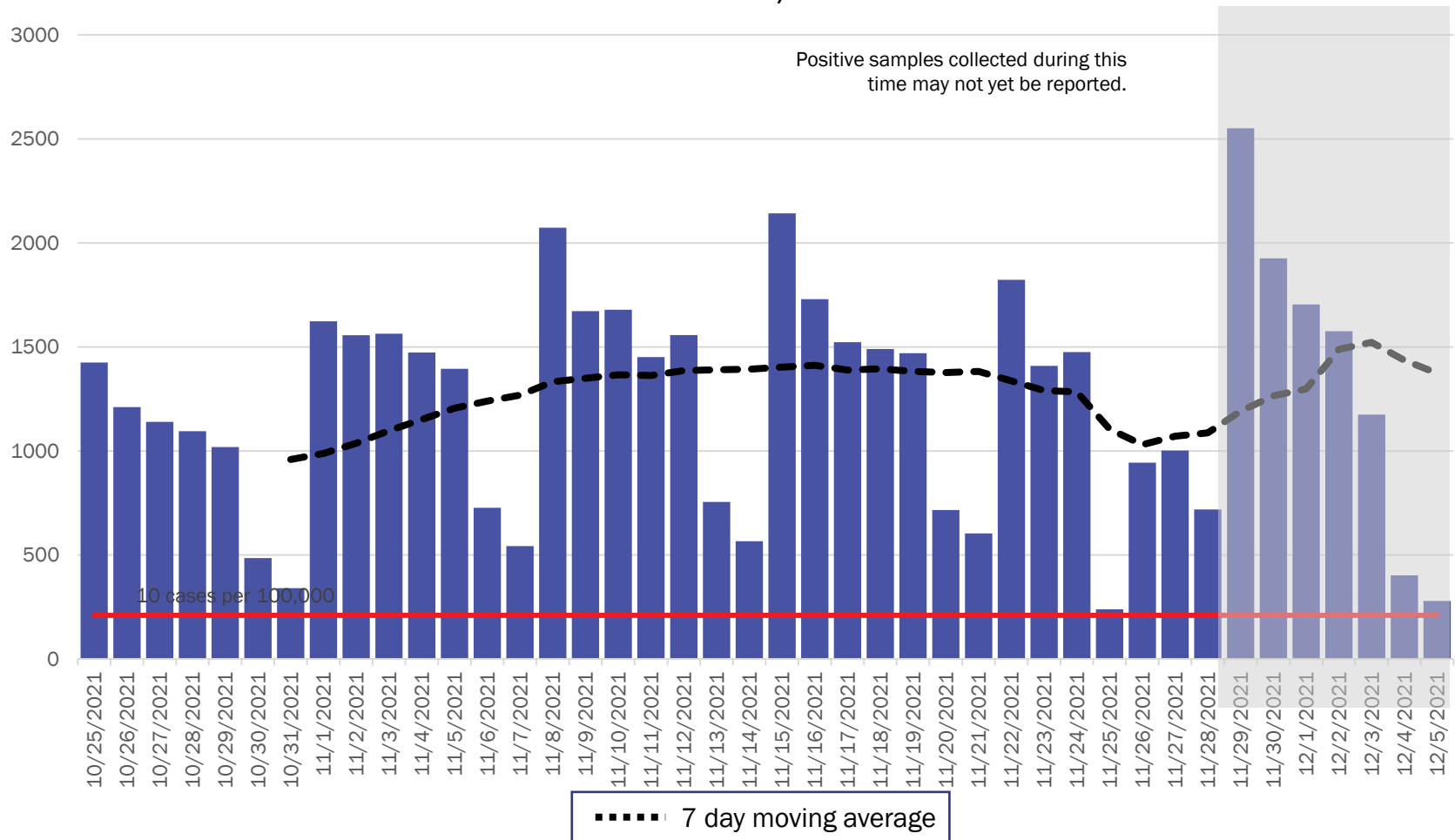
*Investing for tomorrow, delivering today.*

1190 S. St. Francis Drive • Santa Fe, NM 87505 • Phone: 505-827-2613 • Fax: 505-827-2530 • nmhealth.org

# New Mexico COVID-19 Cases by Date of Specimen Collection

## Recent 6 Week View

### December 6, 2021

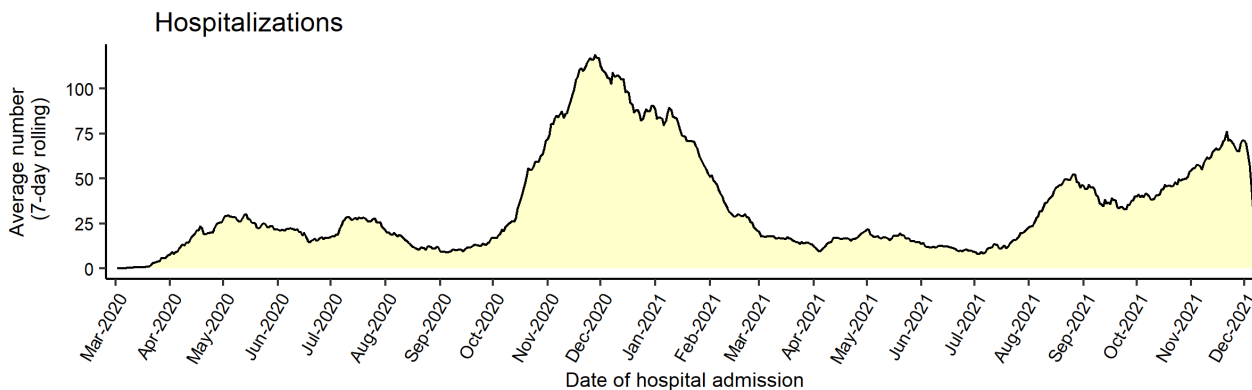
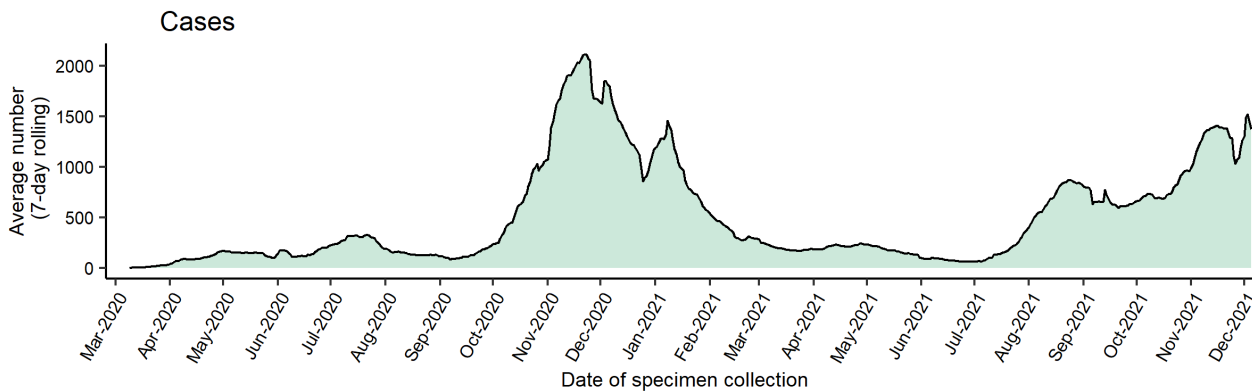


Source: Infectious Disease Epidemiology Bureau, Epidemiology and Response Division 12.06.2021, New Mexico Department of Health.

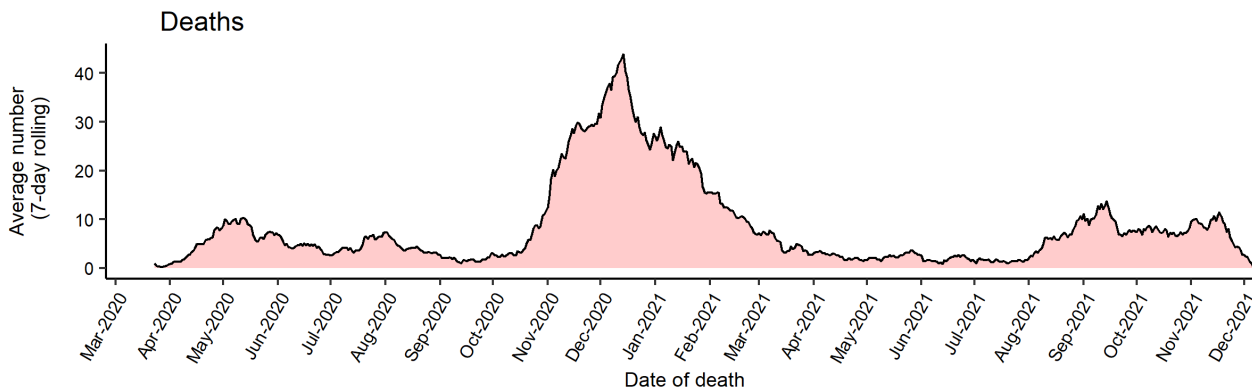


*Investing for tomorrow, delivering today.*

# Average number (7-day rolling average) of cases, hospitalizations, and deaths over time



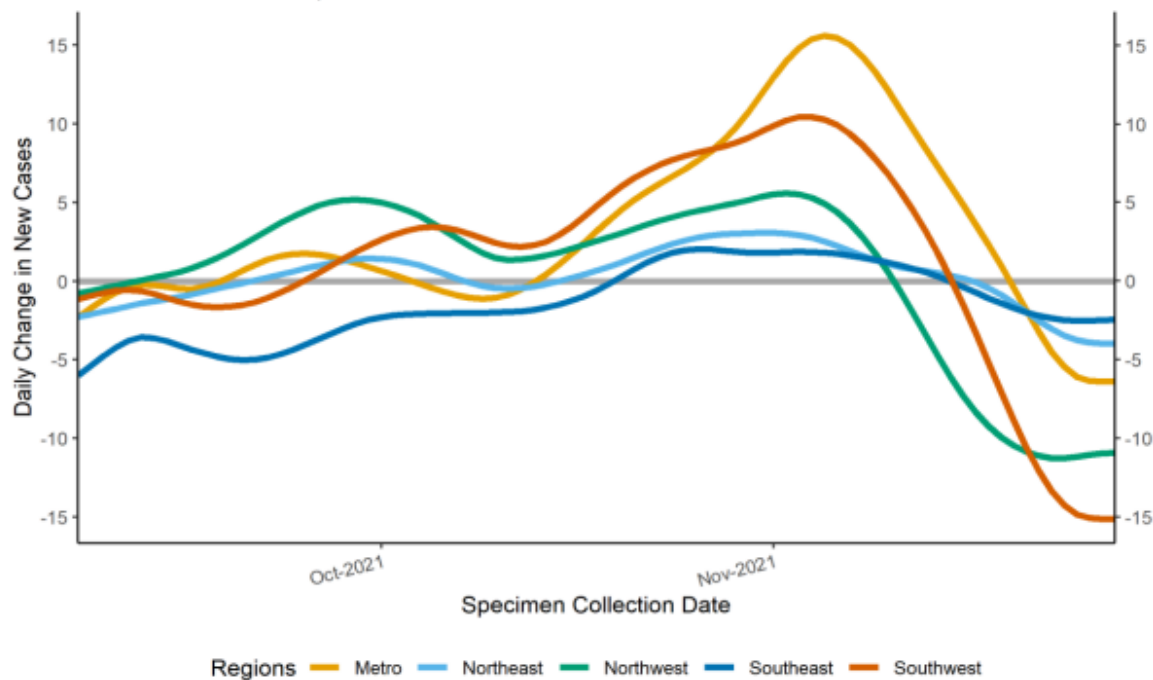
*Note: Cases, hospitalizations, and deaths may not yet be reported in 7 or more days.*



*As of 12/06/21*

# Epidemic Growth Acceleration

Daily Change in New COVID-19 Cases, by New Mexico Region, as of November 29, 2021



\*

	Region	Growth Acceleration November 22, 2021	Growth Acceleration November 29, 2021
1	Metro	-3.3	-6.4
2	Northeast	-2.5	-3.9
3	Northwest	-11.1	-10.9
4	Southeast	-2.2	-2.5
5	Southwest	-12.1	-15.1

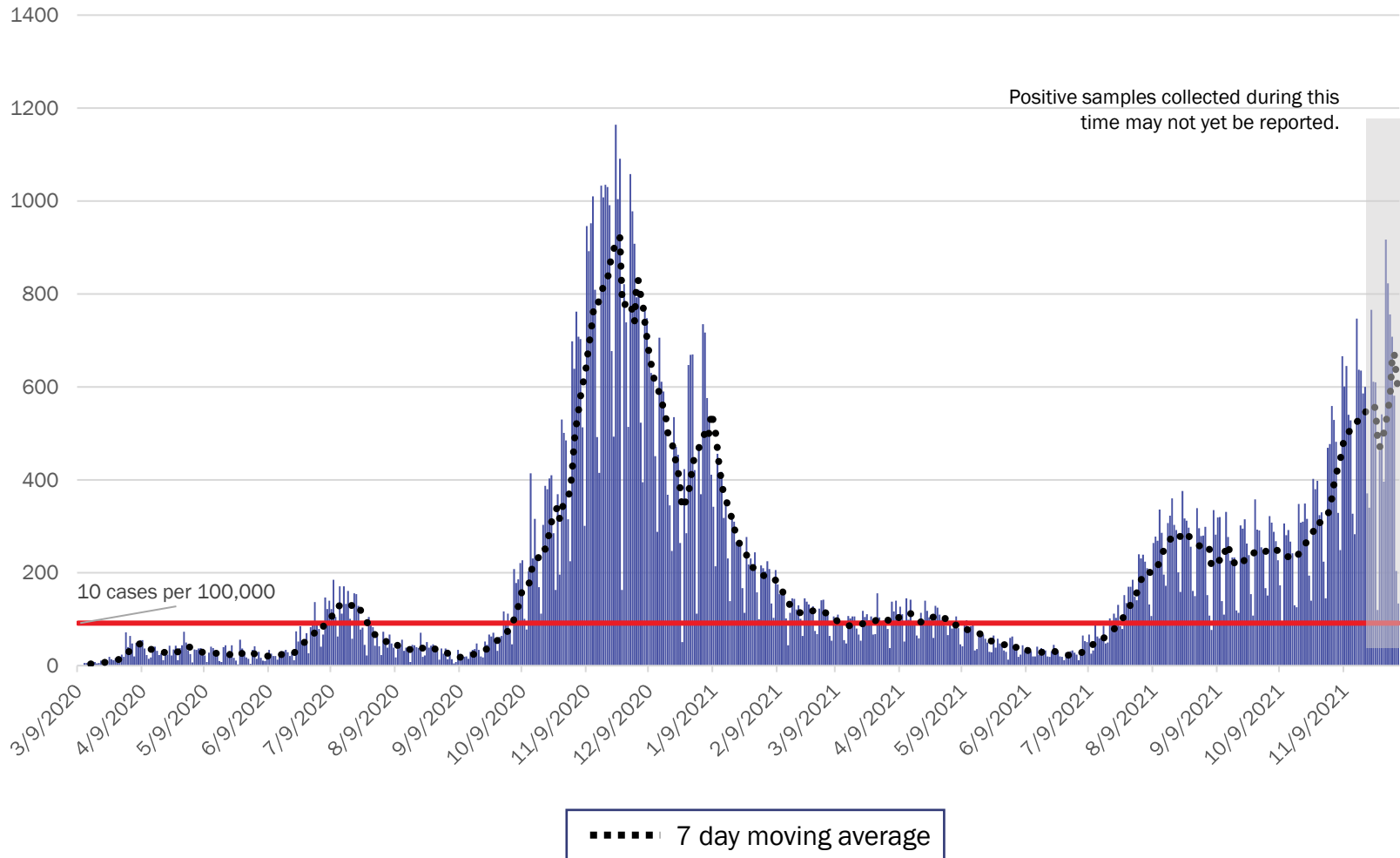
\*Positive specimens collected in the last 7 or more days may not yet be reported to NMDOH. Case counts and growth acceleration during this time are underestimated.

Source: Infectious Disease Epidemiology Bureau, Epidemiology and Response Division 12.06.2021, New Mexico Department of Health.



*Investing for tomorrow, delivering today.*

# Metro Region Case Count by Collection Date with 7 Day Moving Average December 6, 2021



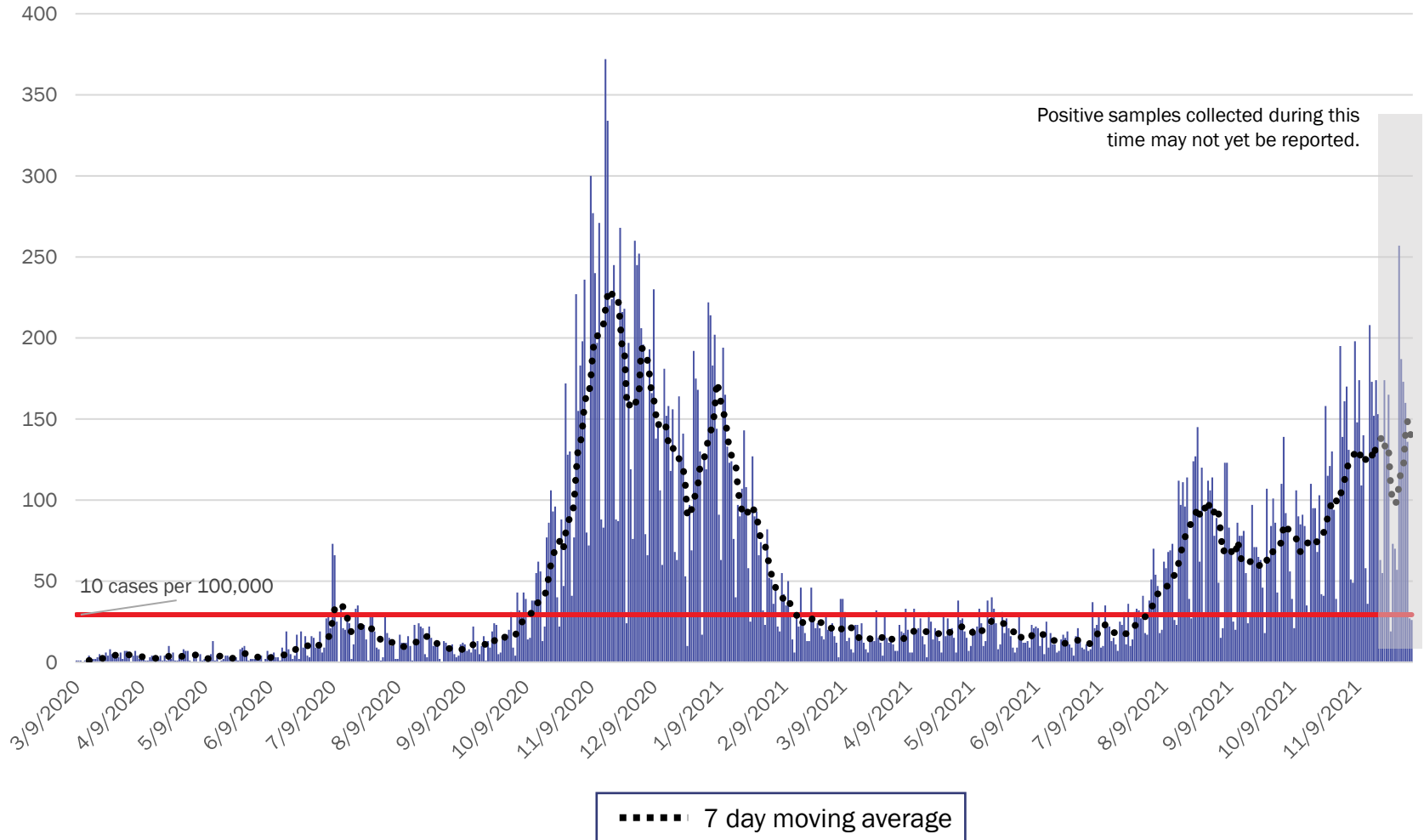
Source: Infectious Disease Epidemiology Bureau, Epidemiology and Response Division 12.06.2021, New Mexico Department of Health.



*Investing for tomorrow, delivering today.*

1190 S. St. Francis Drive • Santa Fe, NM 87505 • Phone: 505-827-2613 • Fax: 505-827-2530 • nmhealth.org

# Northeast Region Case Count by Collection Date with 7 Day Moving Average December 6, 2021



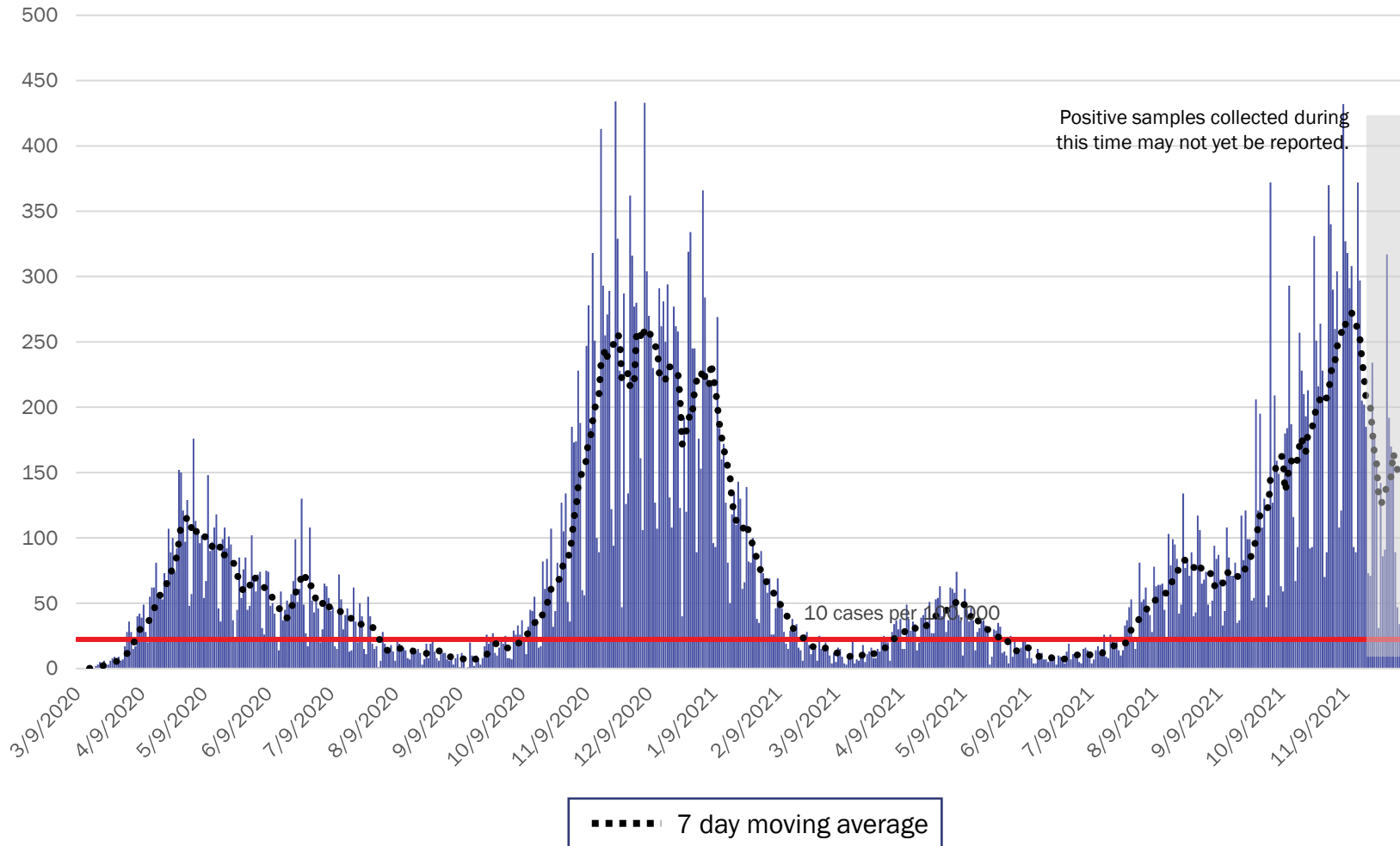
Source: Infectious Disease Epidemiology Bureau, Epidemiology and Response Division 12.06.2021, New Mexico Department of Health.



*Investing for tomorrow, delivering today.*

1190 S. St. Francis Drive • Santa Fe, NM 87505 • Phone: 505-827-2613 • Fax: 505-827-2530 • nmhealth.org

# Northwest Region Case Count by Collection Date with 7 Day Moving Average December 6, 2021



Source: Infectious Disease Epidemiology Bureau, Epidemiology and Response Division 12.06.2021, New Mexico Department of Health.



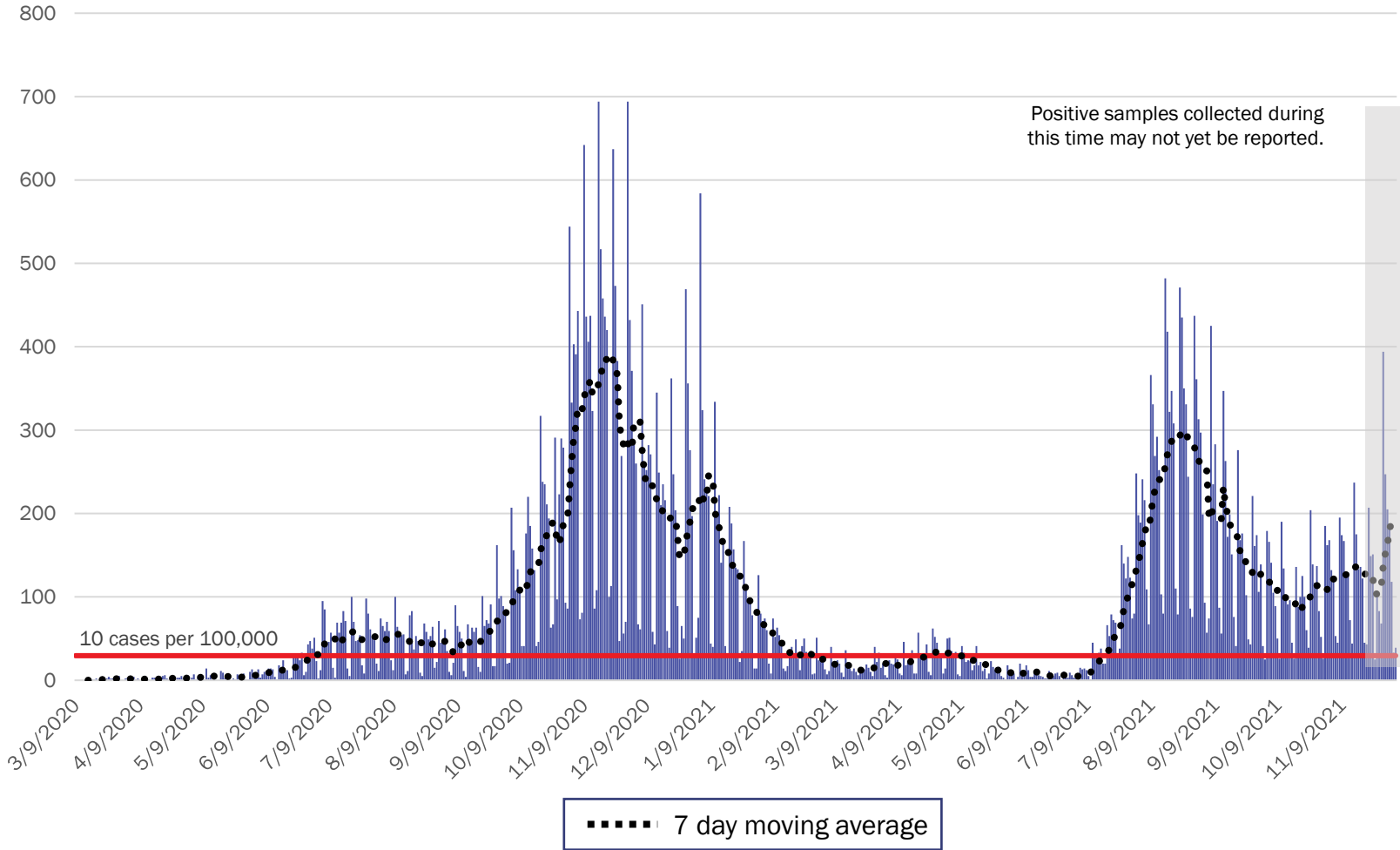
*Investing for tomorrow, delivering today.*



1190 S. St. Francis Drive • Santa Fe, NM 87505 • Phone: 505-827-2613 • Fax: 505-827-2530 • nmhealth.org



## Southeast Region Case Count by Collection Date with 7 Day Moving Average December 6, 2021



Source: Infectious Disease Epidemiology Bureau, Epidemiology and Response Division 12.06.2021, New Mexico Department of Health.

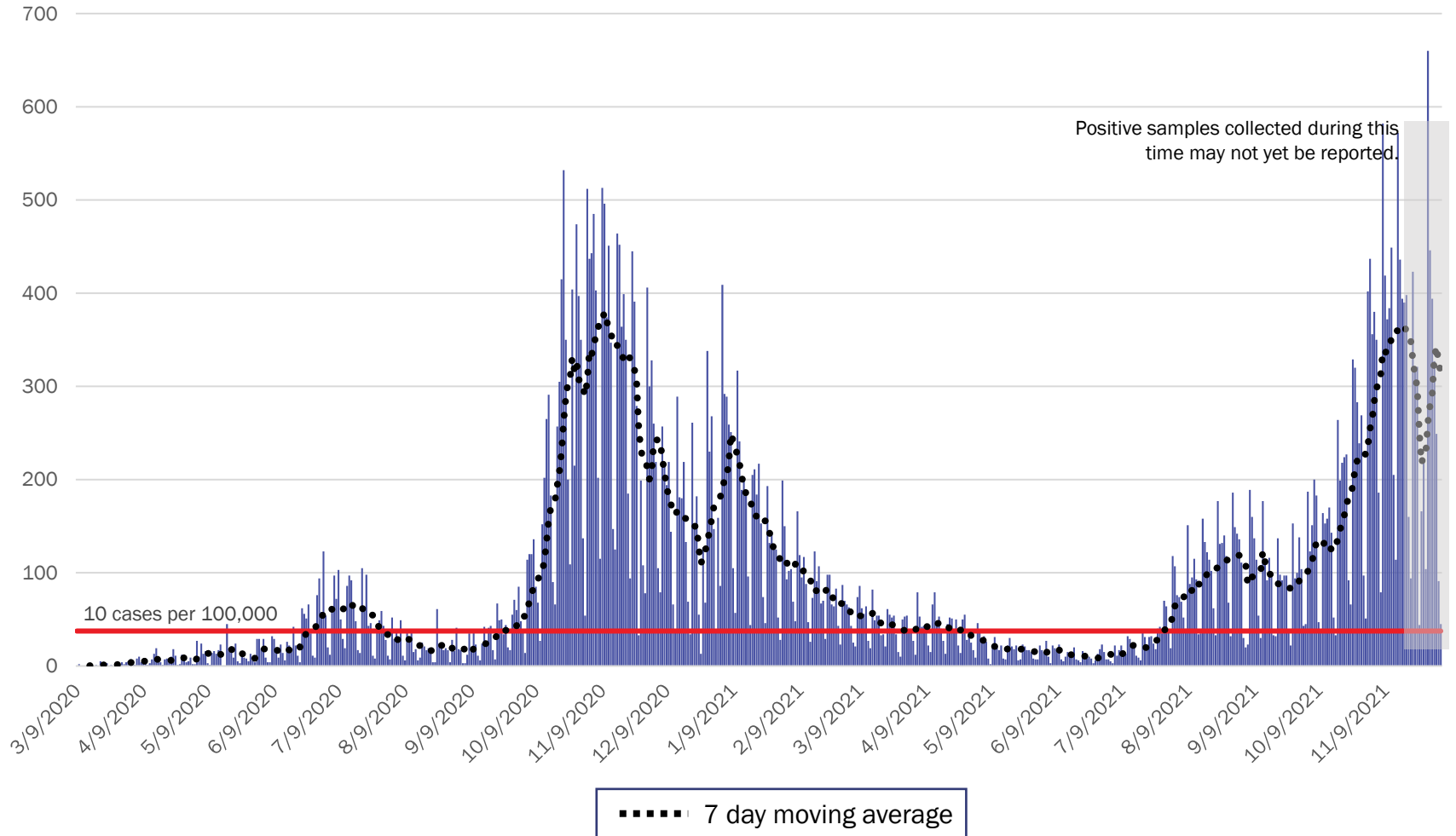


*Investing for tomorrow, delivering today.*



1190 S. St. Francis Drive • Santa Fe, NM 87505 • Phone: 505-827-2613 • Fax: 505-827-2530 • nmhealth.org

# Southwest Region Case Count by Collection Date with 7 Day Moving Average December 6, 2021



Source: Infectious Disease Epidemiology Bureau, Epidemiology and Response Division 12.06.2021, New Mexico Department of Health.



*Investing for tomorrow, delivering today.*



1190 S. St. Francis Drive • Santa Fe, NM 87505 • Phone: 505-827-2613 • Fax: 505-827-2530 • nmhealth.org

# New Mexico Status Updates

- Case count: Statewide, daily case counts may be increasing
- Hospitalizations: COVID-19 hospitalizations are may have plateaued.
- Deaths: COVID-19 deaths may have plateaued.

For more information, please visit the [Epidemiology Reports](https://cv.nmhealth.org/epidemiology-reports/) page on the NMDOH COVID-19 website: <https://cv.nmhealth.org/epidemiology-reports/>