

COVID-19 Pediatric Case Report

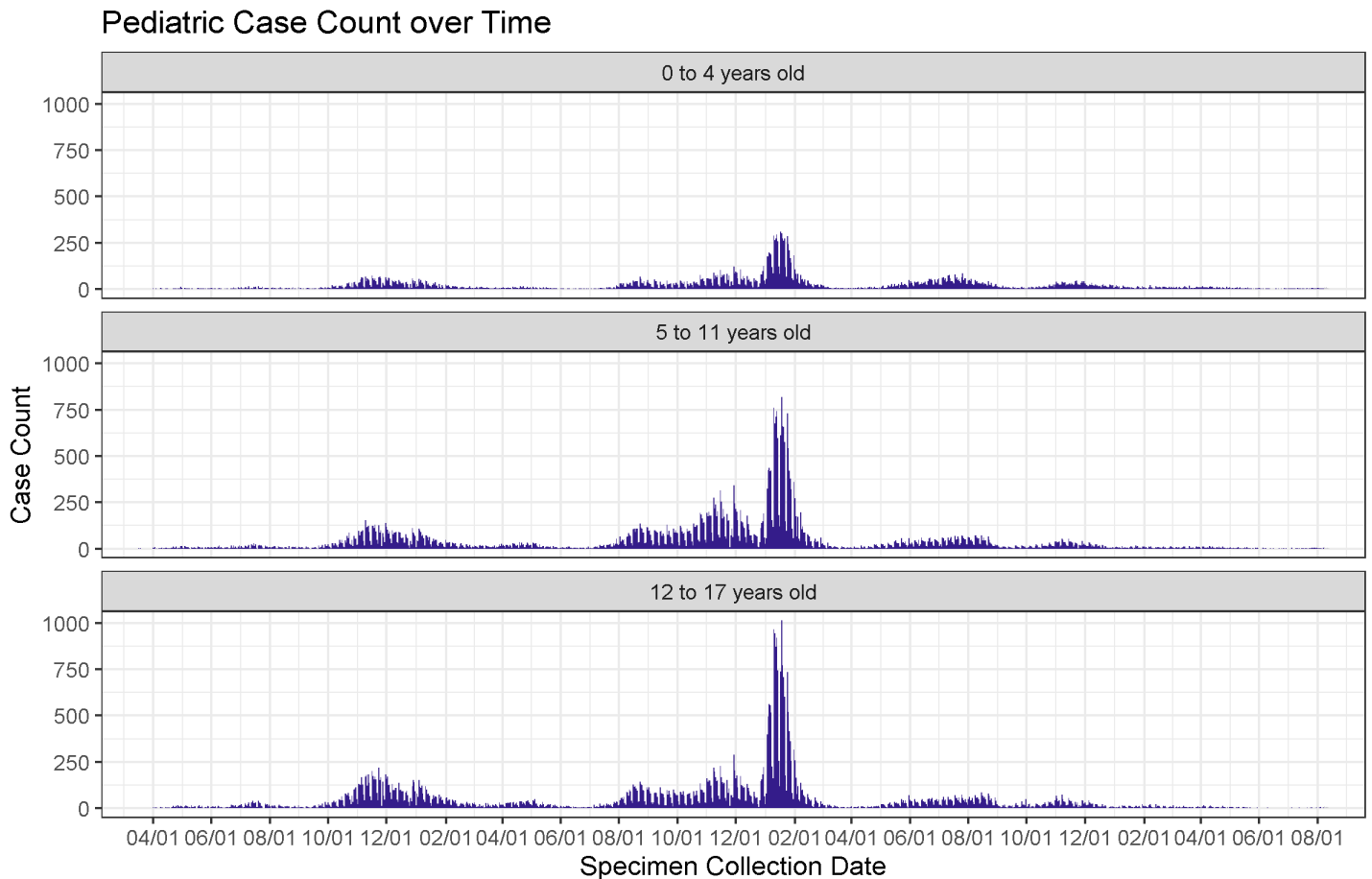
August 14, 2023

Unless stated otherwise, all data reported here exclude cases who are from out-of-state and cases who are detainees in Federal Immigration and Customs Enforcement (ICE) facilities.

Total number of pediatric cases (% of cases that are pediatric)	Number of pediatric cases in the last 7 days (% of cases in the last 7 days that are pediatric)
127762 (18.6%)	114 (16.6%)

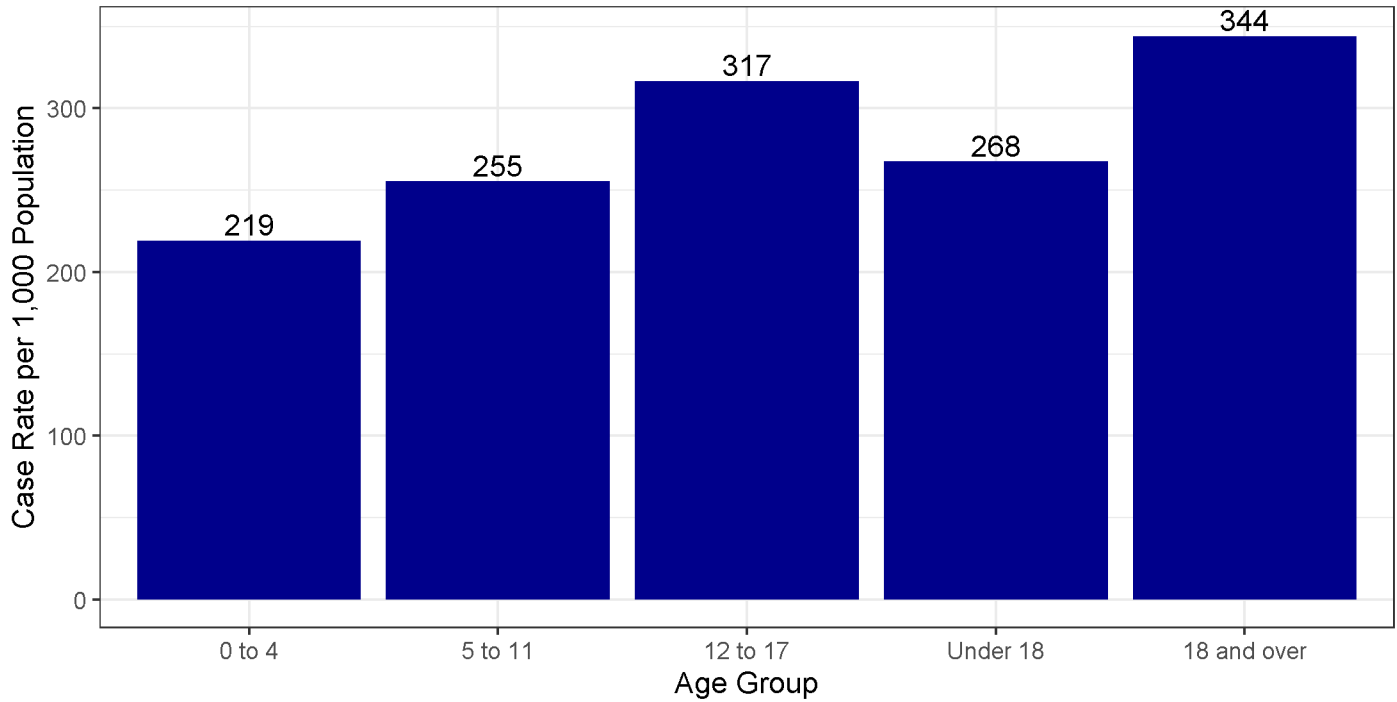
SECTION 1: PEDIATRIC CASE DEMOGRAPHICS

Pediatric case count over time



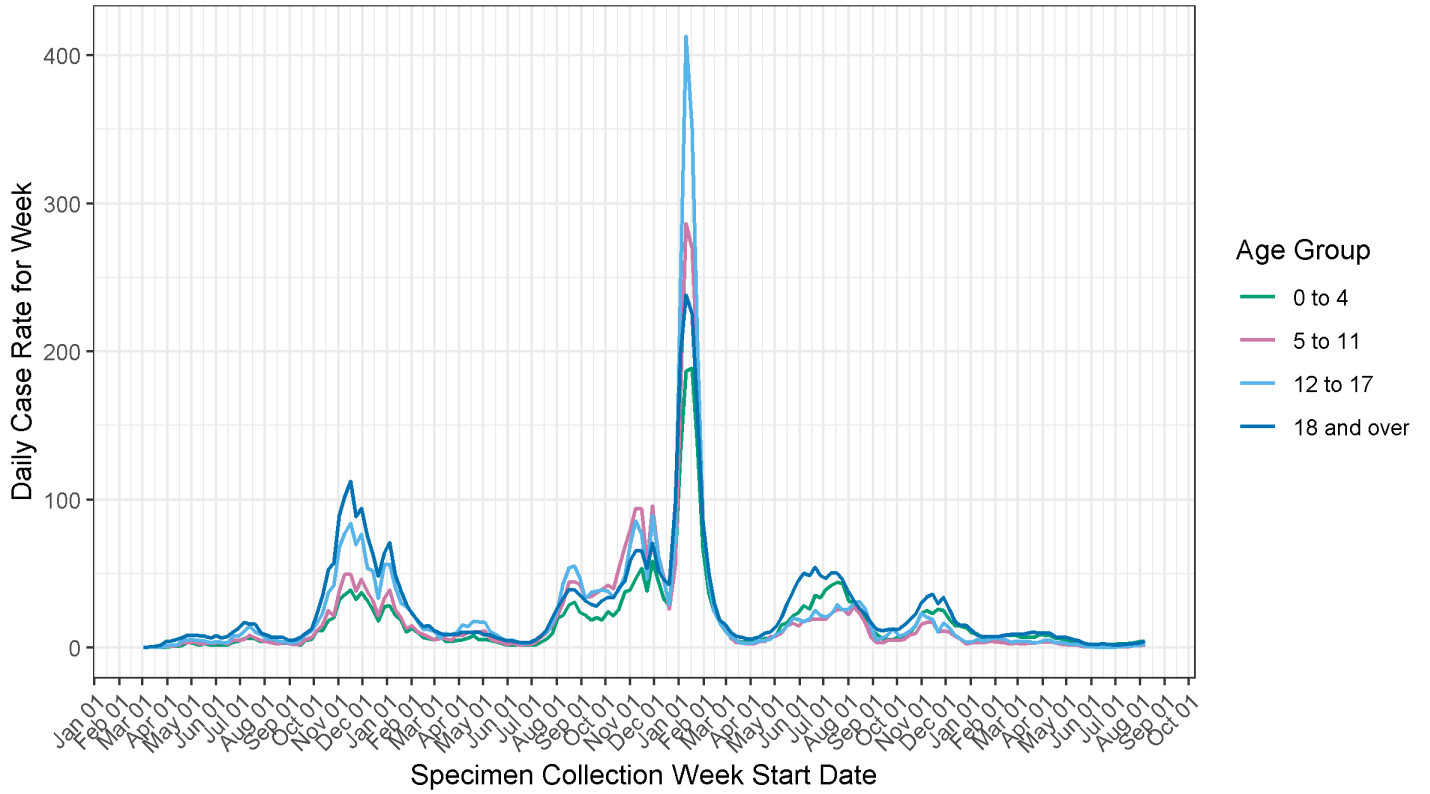
Previous 7 days are greyed out. Positive samples collected during this time may not yet be reported.

Pediatric case rate per 1,000 population by age group



Age Group	Number of Cases	Percent of Cases	Cases per 1,000	Ratio of 18 and Over to Age Group
0 to 4	26662	3.9%	219.1	0.6
5 to 11	48248	7%	255.5	0.8
12 to 17	52852	7.7%	316.8	1.0
Under 18	127762	18.6%	267.6	0.8
18 and over	559175	81.4%	344	1.0

Daily pediatric case rate per 100,000 population by age group

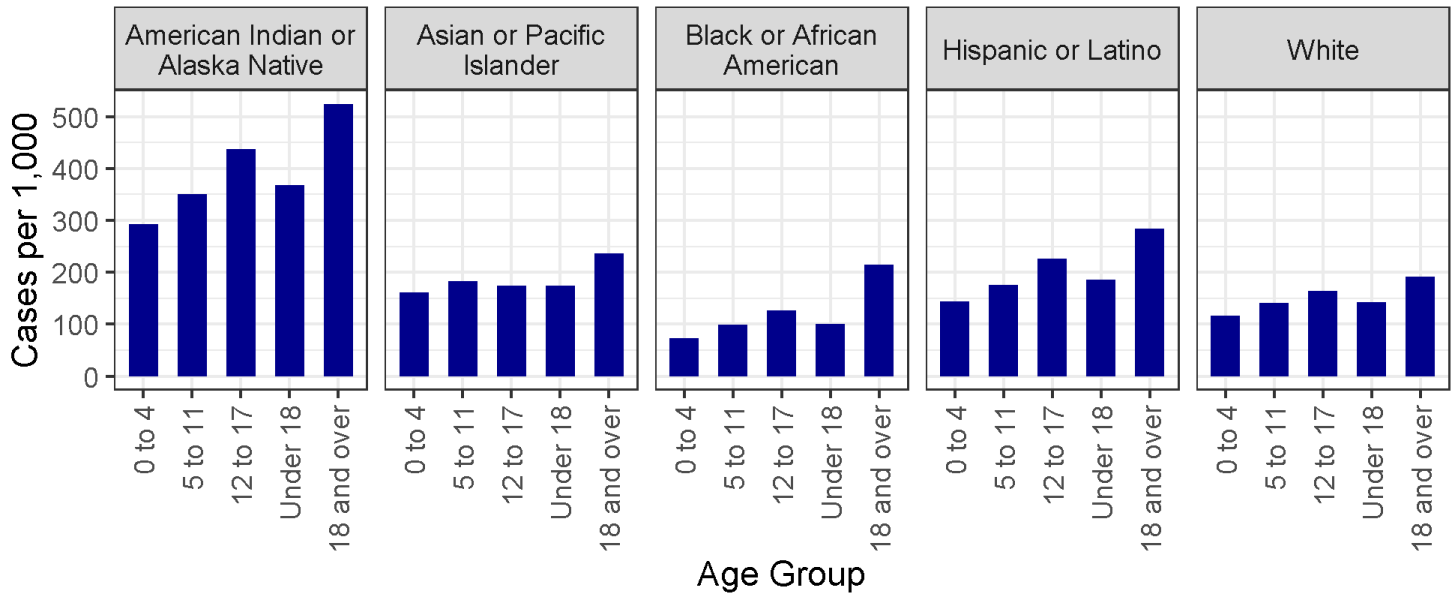


Tests collected in the last ten days may not yet have results. Recent case rates will change as these tests are processed.

Pediatric cases by sex and age

Sex	Age Group	Cases	Percent of Cases within Gender	Cases per 1,000 Population
Female	0 to 4	12525	3.4%	210.3
	5 to 11	23191	6.3%	250.6
	12 to 17	27064	7.4%	329.4
	Under 18	62780	17.2%	268
	18 and over	302777	82.8%	365.7
Male	0 to 4	13841	4.4%	222.8
	5 to 11	24452	7.8%	253.8
	12 to 17	25085	8%	296.3
	Under 18	63378	20.3%	260.7
	18 and over	248746	79.7%	311.9

Rates per 1,000 population of cases by age in each race/ethnicity group



Race	Age Group	Cases	Percent	Rate per 1,000
American Indian or Alaska Native	0 to 4	3644	4%	292.9
	5 to 11	7188	7.8%	350.9
	12 to 17	7973	8.7%	437.5
	Under 18	18805	20.4%	367.7
	18 and over	73238	79.6%	524.5
Asian or Pacific Islander	0 to 4	273	3.3%	161.4
	5 to 11	471	5.7%	182.8
	12 to 17	428	5.1%	173.6
	Under 18	1172	14.1%	174.1
	18 and over	7142	85.9%	235.8
Black or African American	0 to 4	232	2.6%	72.8
	5 to 11	488	5.5%	98.8
	12 to 17	478	5.4%	126.1
	Under 18	1198	13.5%	100.5
	18 and over	7646	86.5%	214
Hispanic or Latino	0 to 4	10501	3.9%	143.2
	5 to 11	20099	7.6%	176.3
	12 to 17	22710	8.5%	225.9
	Under 18	53310	20%	185.1
	18 and over	212576	80%	284.3
White	0 to 4	3603	2.5%	116.2
	5 to 11	6569	4.5%	140.3
	12 to 17	6861	4.7%	164.1
	Under 18	17033	11.7%	142.4
	18 and over	128362	88.3%	191.1

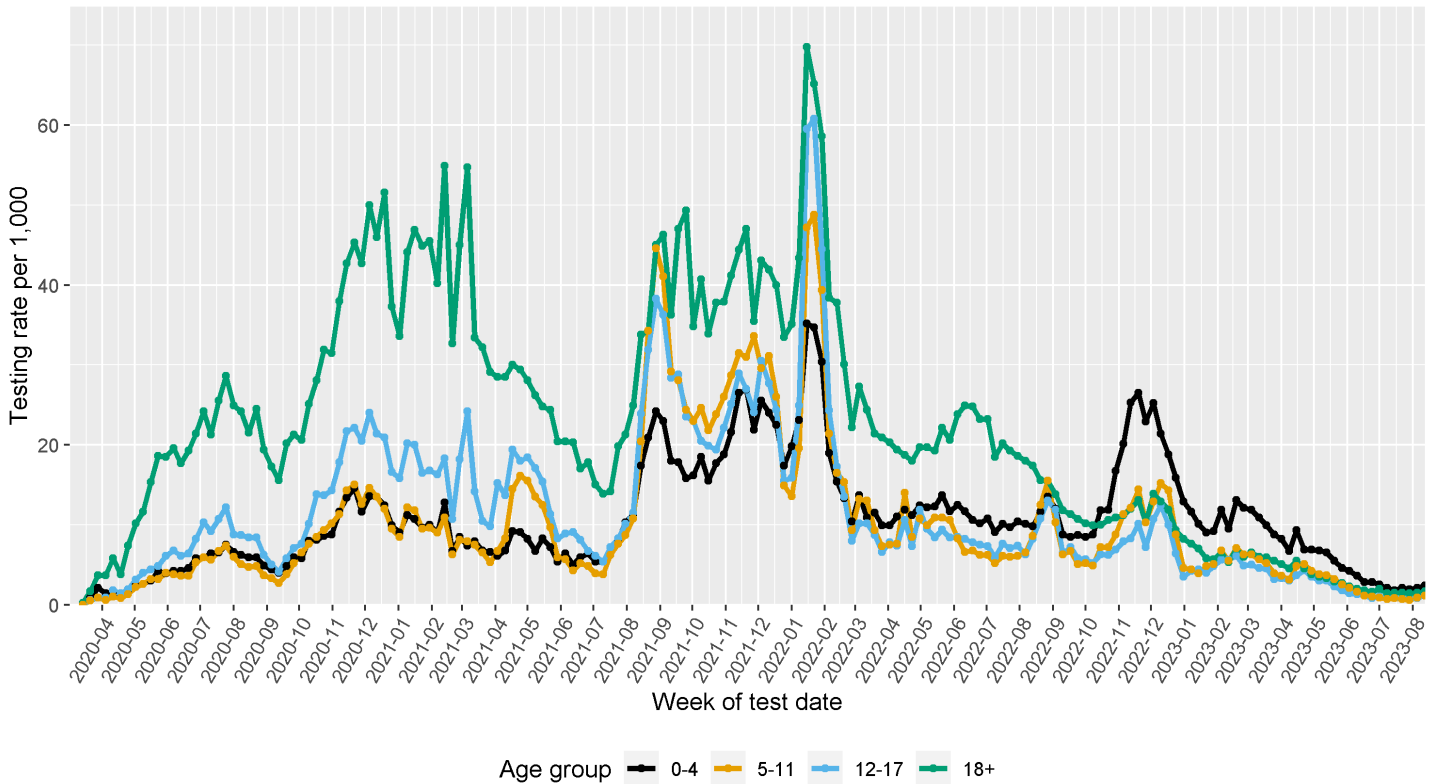
SECTION 2: PEDIATRIC TESTING RATES AND POSITIVITY

Cumulative testing rates per 1,000 population and test positivity by age group

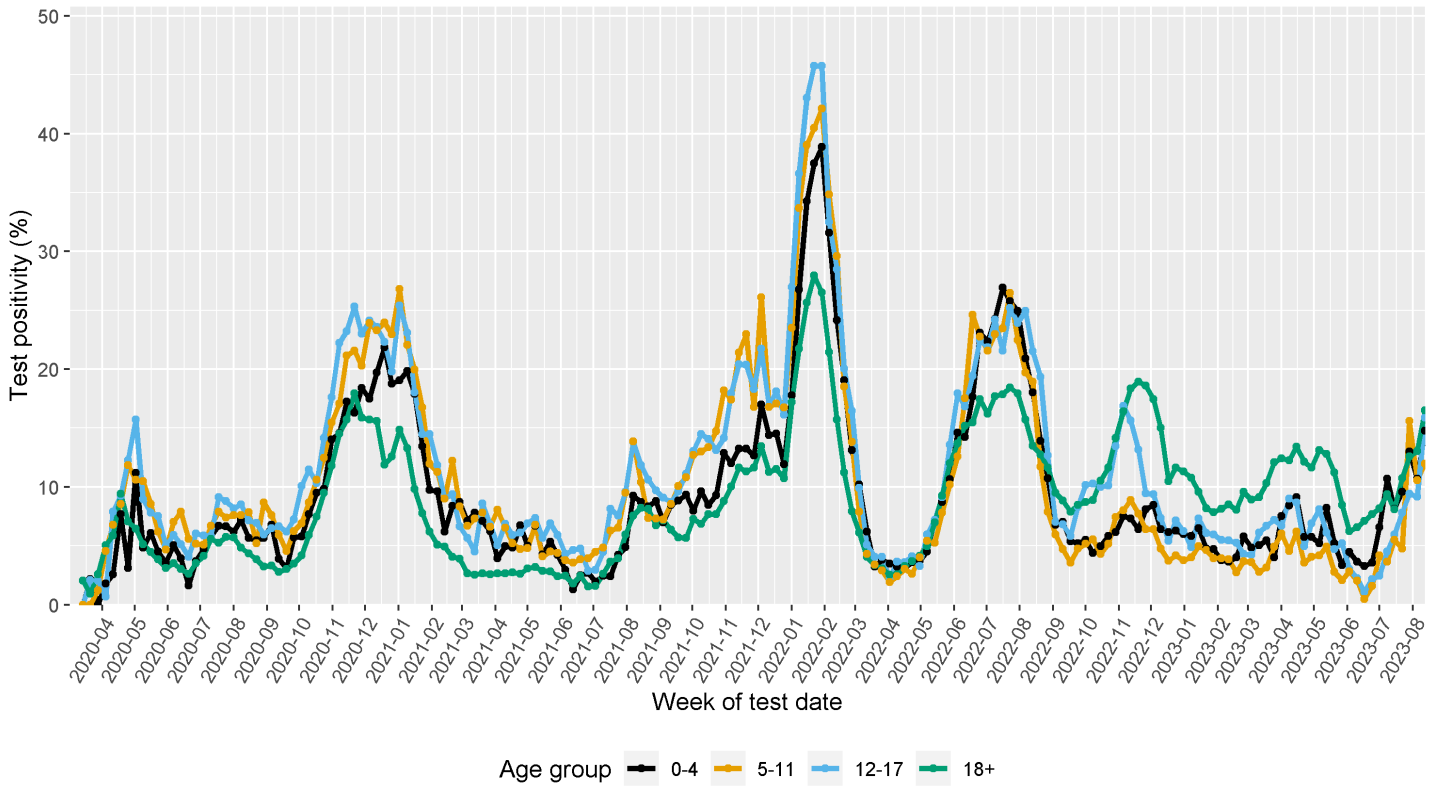
Test includes PCR only

Age Group (years)	Total Number of Test	Cumulative tests per 1,000 population	Cumulative test positivity (%)
0-4	27111	1919.1	11.5%
5-11	48843	1832.1	14.2%
12-17	53676	2059.9	15.7%
18+	575243	3990.8	9.6%

Testing rates per 1,000 population by age group by week



Test positivity (%) by age group by week



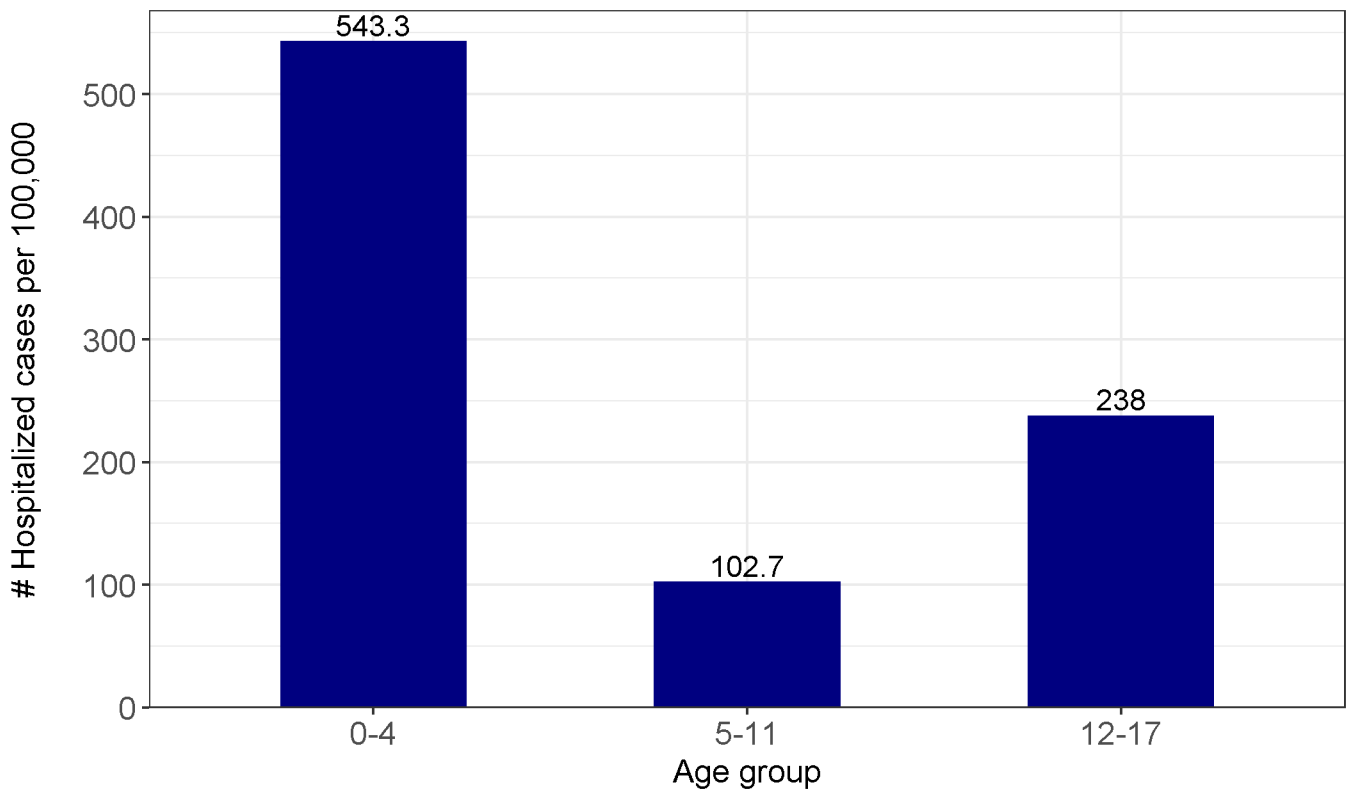
SECTION 3: PEDIATRIC HOSPITALIZATIONS

Out-of-state pediatric cases were excluded.

Total pediatric hospitalizations	Pediatric hospitalizations in the last week	Total Pediatric deaths
1252	4	15

Hospitalization rate per 100,000 population and percentage by age group

It should be noted that due to the small number of hospitalizations of pediatric cases, the hospitalization rates per 100,000 population for these age groups should be interpreted with caution.¹²



¹ Deaths certified to have COVID-19 disease or SARS-CoV-2 as a cause of death or a significant condition contributing to death. Intentional and unintentional injuries are excluded. Death reporting might be delayed up to 6 weeks. Beginning January 1, 2022, deaths due to natural causes matched to a SARS-CoV-2 positive test result within 30 days of the date of death are included as COVID-19 related deaths even when COVID is not listed on the death certificate.

² Ongoing efforts to improve the completeness and accuracy of the hospitalization data will result in week-to-week changes in the cumulative hospitalization counts. These changes are not affecting recent hospitalization data, but will affect the historical (i.e., cumulative) hospitalization baseline.

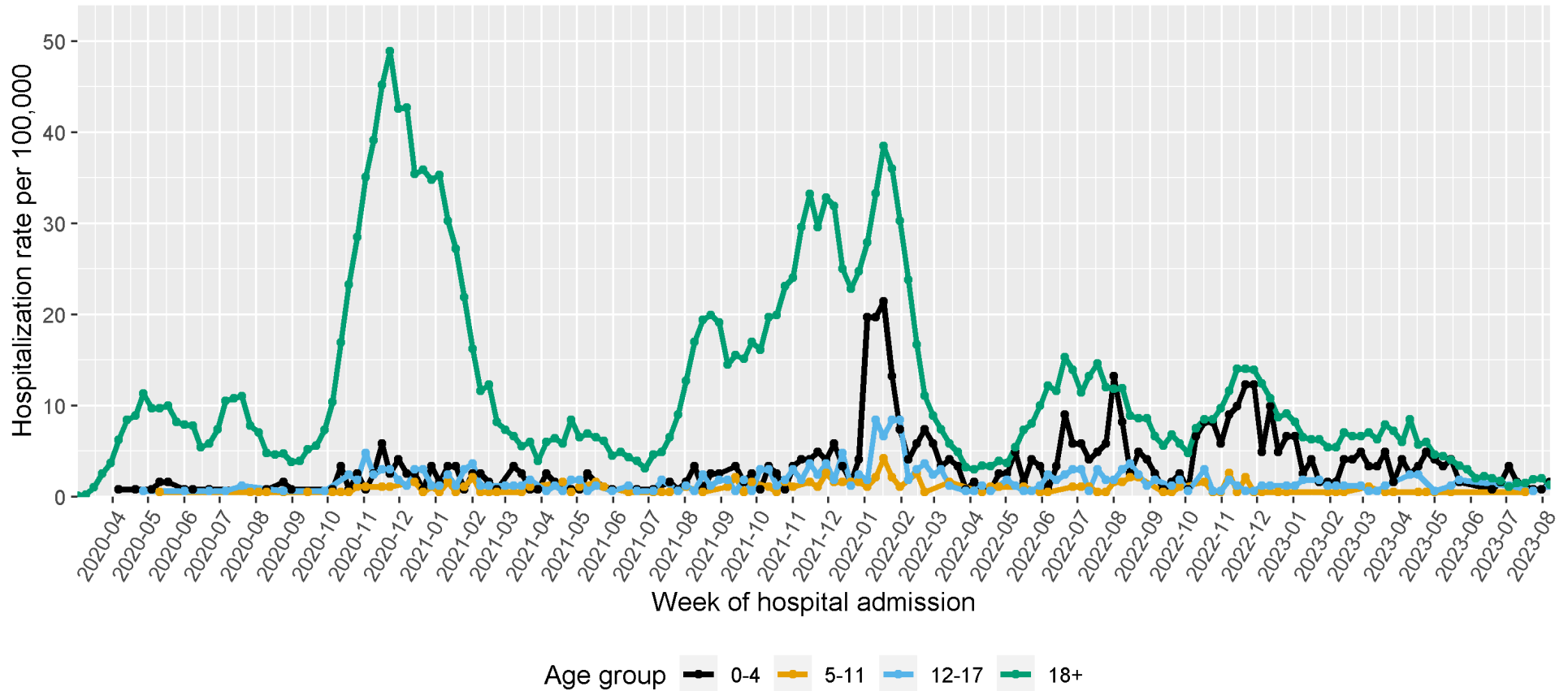
Table 1. Number of hospitalizations, percent of hospitalizations and rate of hospitalization per 100,000 for cases under 18 years old

Age group (years)	Number of hospitalizations	Percent of hospitalizations Under 18 years old	Hospitalization rate per 100,000 population
0-4	661	52.8%	543.3
5-11	194	15.5%	102.7
12-17	397	31.7%	238

Table 2. Number of hospitalizations, percent of hospitalizations and rate of hospitalization per 100,000 for cases under 18 years old compared to 18 years and over

Age group (years)	Number of hospitalizations	Percent of hospitalizations Under 18 years old	Hospitalization rate per 100,000 population
Under 18	1252	3.4%	263.5
18+	35289	96.6%	2149

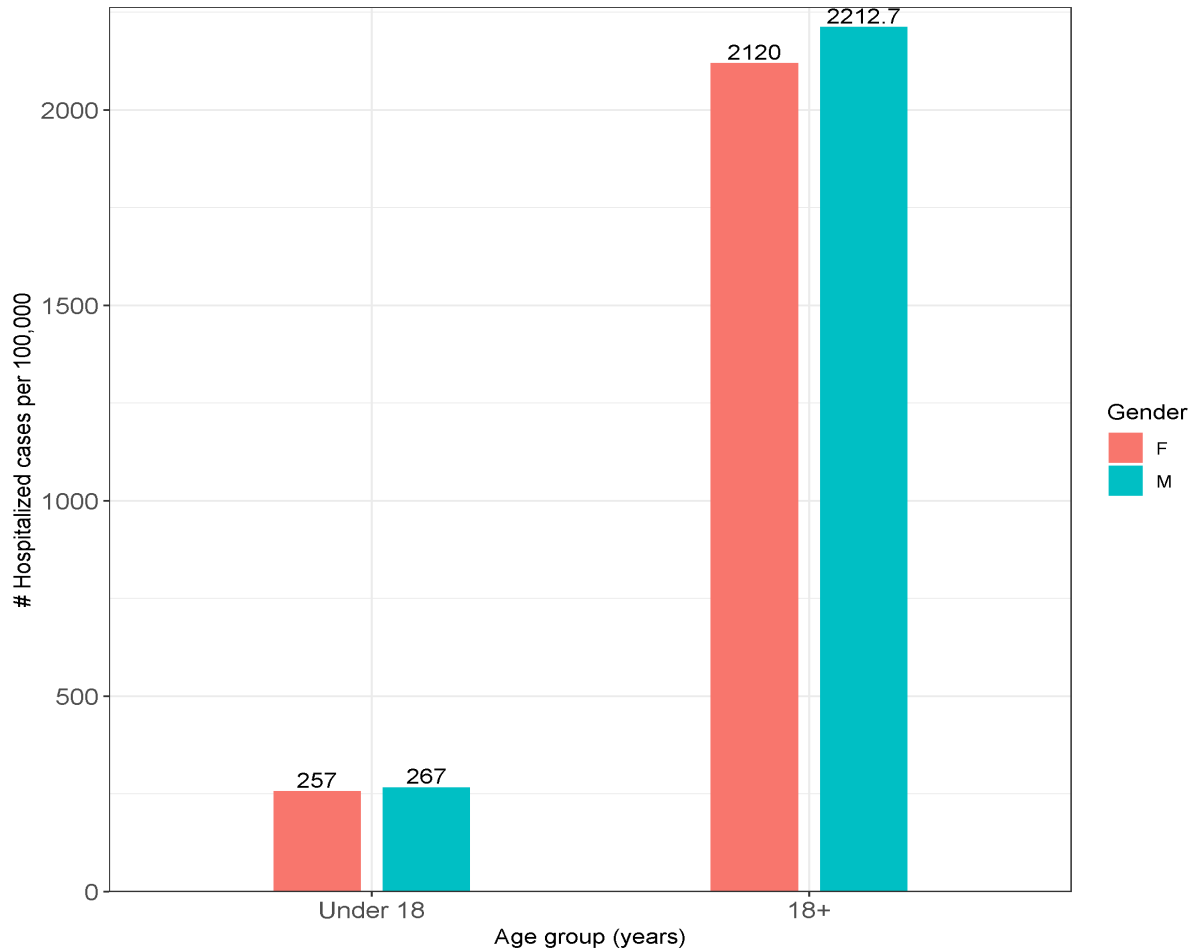
Hospitalizations per 100,000 population by age each week



Finding: Overall, the hospitalization rates per 100,000 population among the pediatric age groups have remained low. It should be noted that due to the small number of hospitalizations of pediatric cases, the hospitalization rates per 100,000 population for these age groups should be interpreted with caution.

Note: Hospitalizations in the most recent week may not yet be reported.

Hospitalization rate per 100,000 population and percentage by sex



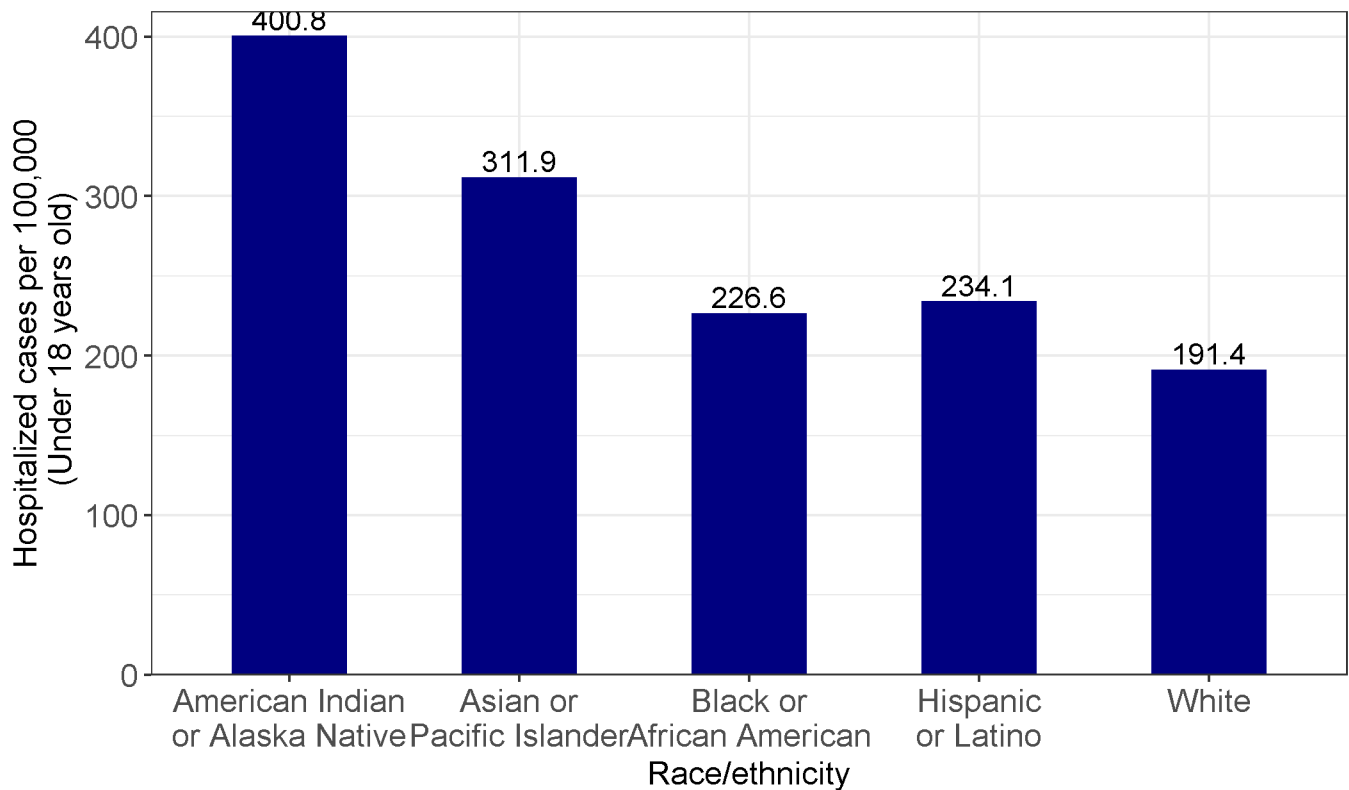
Age group (years)	Sex	Number of hospitalizations	Percent of hospitalizations within age group	Hospitalization rate per 100,000
Under 18	Female	602	48.1%	257
	Male	649	51.9%	267
18+	Female	17550	49.9%	2120
	Male	17645	50.1%	2212.7

Note: 95 cases were excluded due to missing or unknown sex information.

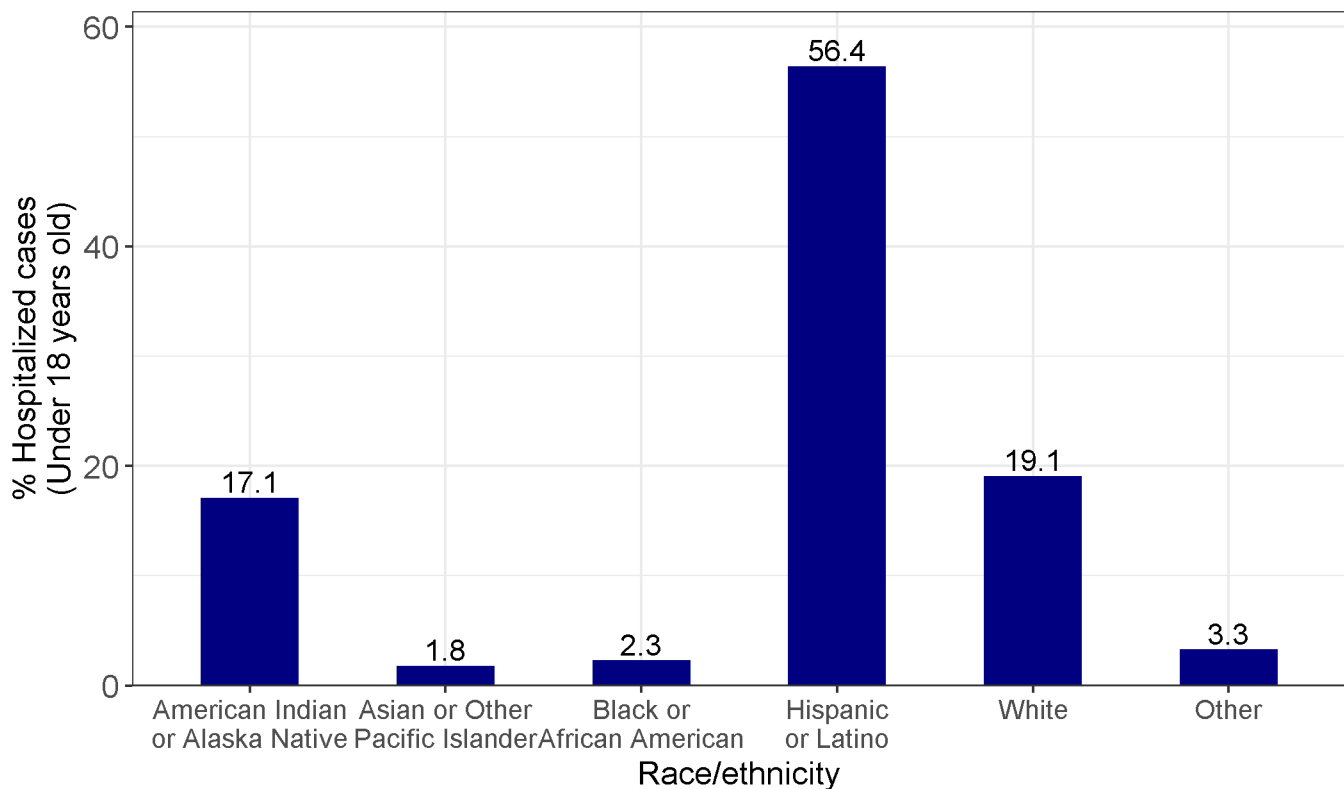
Finding: The hospitalization rate per 100,000 population is slightly higher for males compared to females within the Under 18 and over 18 years age groups. It should be noted that due to the small number of hospitalizations of pediatric cases, the hospitalization rates per 100,000 population for these age groups should be interpreted with caution.

Hospitalization rate per 100,000 population and percentage by race/ethnicity

Finding: In the Under 18 years old age group, the hospitalization rate per 100,000 population is the highest in American Indian or Alaska Native children at **400.8** followed by Asian or Pacific Islanders at **311.9**. However, Hispanic or Latino children make up **56.4%** of the total number of pediatric cases hospitalized, followed by White children, at **19.1%**. It should be noted that due to the small number of hospitalizations of pediatric cases, the hospitalization rates per 100,000 population for these age groups should be interpreted with caution.



Note: For Under 18 years age group, only those with complete race/ethnicity data are reported.



Age group (years)	Race/ethnicity	Number of hospitalizations	Percent of hospitalizations within age group	Hospitalization rate per 100,000 population
Under 18	American Indian or Alaska Native	205	17.1%	400.8
	Asian	21	1.8%	311.9
	Black or African American	27	2.3%	226.6
	Hispanic or Latino	674	56.4%	234.1
	White	229	19.1%	191.4
18+	American Indian or Alaska Native	7386	21.7%	5289.1
	Asian	358	1.1%	1182
	Black or African American	545	1.6%	1525.5
	Hispanic or Latino	14260	41.9%	1906.8
	White	10768	31.6%	1602.9

Notes:

- For Under 18 years age group, only those with complete race/ethnicity data are reported.
- For the “18+” years age group, **1228** had missing race/ethnicity information and were excluded. **743** cases “Refused to answer” or answered “Other” and were also excluded.
- Rates for Native Hawaiian or Other Pacific Islanders and “Other” are excluded, as there are no population estimates for these populations.

Data Sources

- **COVID-19 data**
 - **New Mexico Electronic Disease Surveillance System (NM-EDSS)**, Infectious Disease Epidemiology Bureau, Epidemiology and Response Division, New Mexico Department of Health.
 - **Salesforce/MTX COVID-19 Case Investigation Platform.**
- **Population Estimates:** University of New Mexico, Geospatial and Population Studies (GPS) Program.

Data Notes

- **The data reported in this weekly update may not match the daily numbers that are reported in the New Mexico Department of Health (NMDOH) press releases and/or the NMDOH COVID-19 data dashboard. This may be due to variation in the date and time of data extraction from NM-EDSS, corrections after quality assurance review, and differences in the exclusion criteria.**
- As COVID-19 investigations and data collection have changed, graphics and tables of symptoms will no longer be provided. Please see the report dated October 31, 2022 for the latest symptoms data.
- **New Mexico Electronic Disease Surveillance System (NM-EDSS).** Disease incidence data are derived from reports of notifiable infectious diseases. NMDOH relies on health care providers, laboratories, hospitals, clinics, institutions, and individuals to report suspected and confirmed notifiable infectious diseases in accordance with New Mexico Administrative Code 7.4.3.13. Under-reporting can occur due to lack of awareness about reporting requirements or lack of compliance with those requirements. Not all cases of infectious diseases can be detected for various reasons including lack of access to health care services, lack of laboratory testing or concerns about confidentiality. Specific and standardized national case definitions are used to classify disease reports by case status.
- **New Mexico Population Estimates.** All population estimates apply to July 1 of 2020. Estimates include decimal fractions. The sum of population subgroup estimates may not exactly equal the overall state population estimate due to rounding error. Population estimates for previous years are occasionally revised as new information becomes available. When publishing trend data, always be sure that your rates for earlier years match current rates on NM-IBIS that have been calculated with the most up-to-date population estimates.
- **Race/Ethnicity.** Race/Ethnicity are reported as a single variable according to the selection of the case. Any case who is Hispanic is in the Hispanic category and all other races are non-Hispanic.
- **Gender** refers to a person's internal sense of being male, female, some combination of male and female, or neither male nor female. **Sex** refers to the biological anatomy of an individual's reproductive system, and secondary sex characteristics.
- **Case rate per 100,000 population.** A basic measure of disease-specific case frequency is a rate, which takes into account the number of cases and the population size. It is helpful in making public health decisions for a given population, relative to another population regardless of size.