

Modeling & Forecasting COVID-19 in NM

Copyright Notice And Disclaimer

March 9, 2021

For Scientific and Technical Information Only

© Copyright Triad National Security, LLC. All Rights Reserved.

For All Information

Unless otherwise indicated, this information has been authored by an employee or employees of the Triad National Security, LLC., operator of the Los Alamos National Laboratory with the U.S. Department of Energy. The U.S. Government has rights to use, reproduce, and distribute this information. The public may copy and use this information without charge, provided that this Notice and any statement of authorship are reproduced on all copies.

While every effort has been made to produce valid data, by using this data, User acknowledges that neither the Government nor Triad makes any warranty, express or implied, of either the accuracy or completeness of this information or assumes any liability or responsibility for the use of this information. Additionally, this information is provided solely for research purposes and is not provided for purposes of offering medical advice. Accordingly, the U.S. Government and Triad are not to be liable to any user for any loss or damage, whether in contract, tort (including negligence), breach of statutory duty, or otherwise, even if foreseeable, arising under or in connection with use of or reliance on the content displayed on this site.

> School Re-opening Scenarios

Vaccine Modeling Assumptions

- **Vaccine Effectiveness**

- 90% (after 4 weeks)

- **Vaccine Allocation for NM -> U.S. (starting mid December)**

- Consistent with NM reporting

- **Prioritization Groups for the U.S.**

- 1a: Healthcare workers; 1b: essential workers; 1c: 65+

- **Percent of Population Willing to Get Vaccinated**

- 60% and 80% (only 16+)

- **Facemask/Social Distancing Effectiveness**

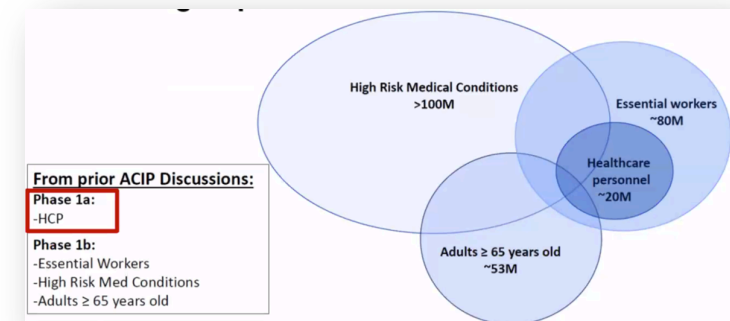
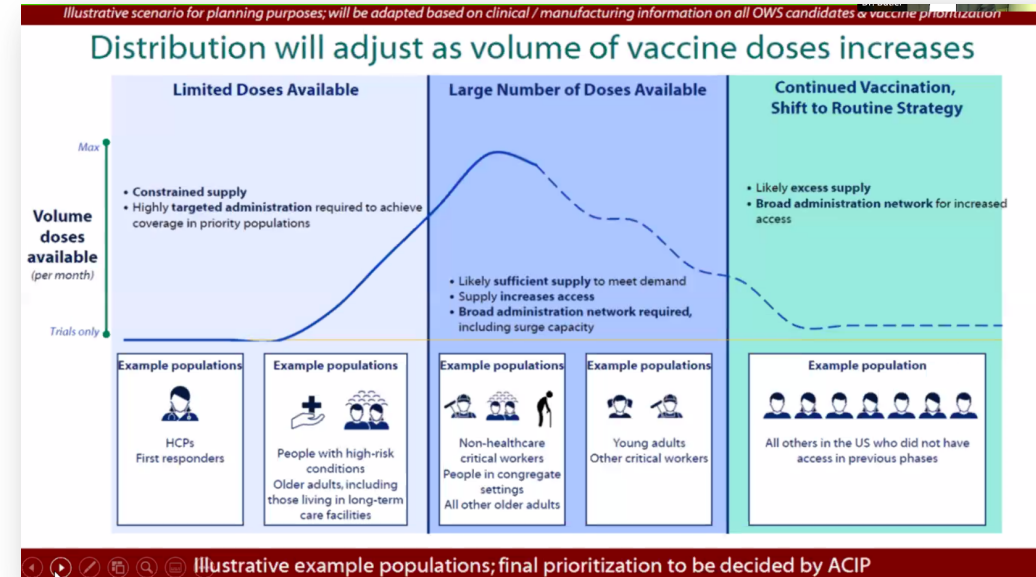
- 80% for Phase 2 & 60% for Phase 3

- **Initial Conditions & Model Calibration**

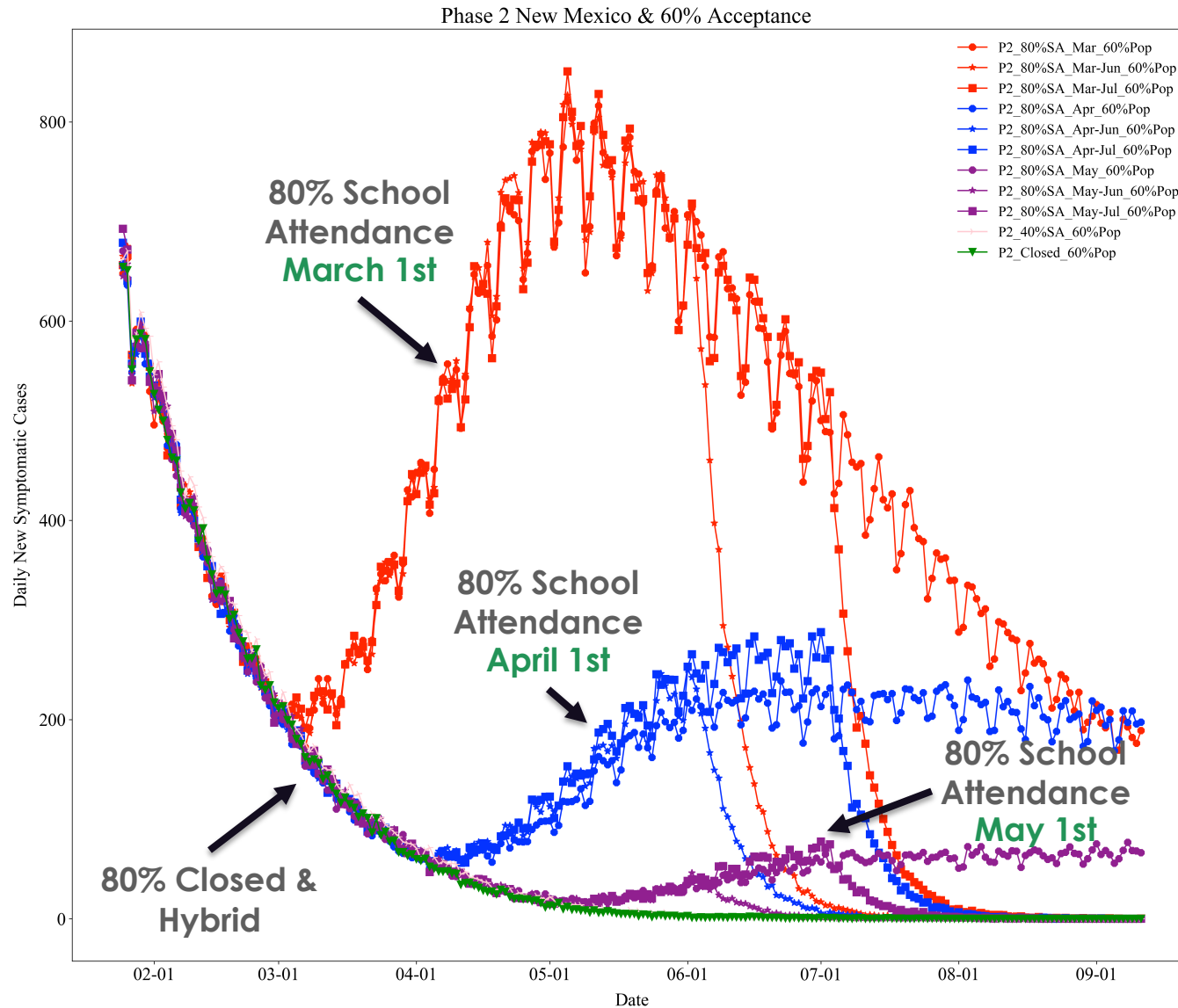
- Mid January

- **School Scenarios**

- 80% attendance 5-days a week, hybrid (two non-overlapping cohorts of 40% each), closed (virtual learning)



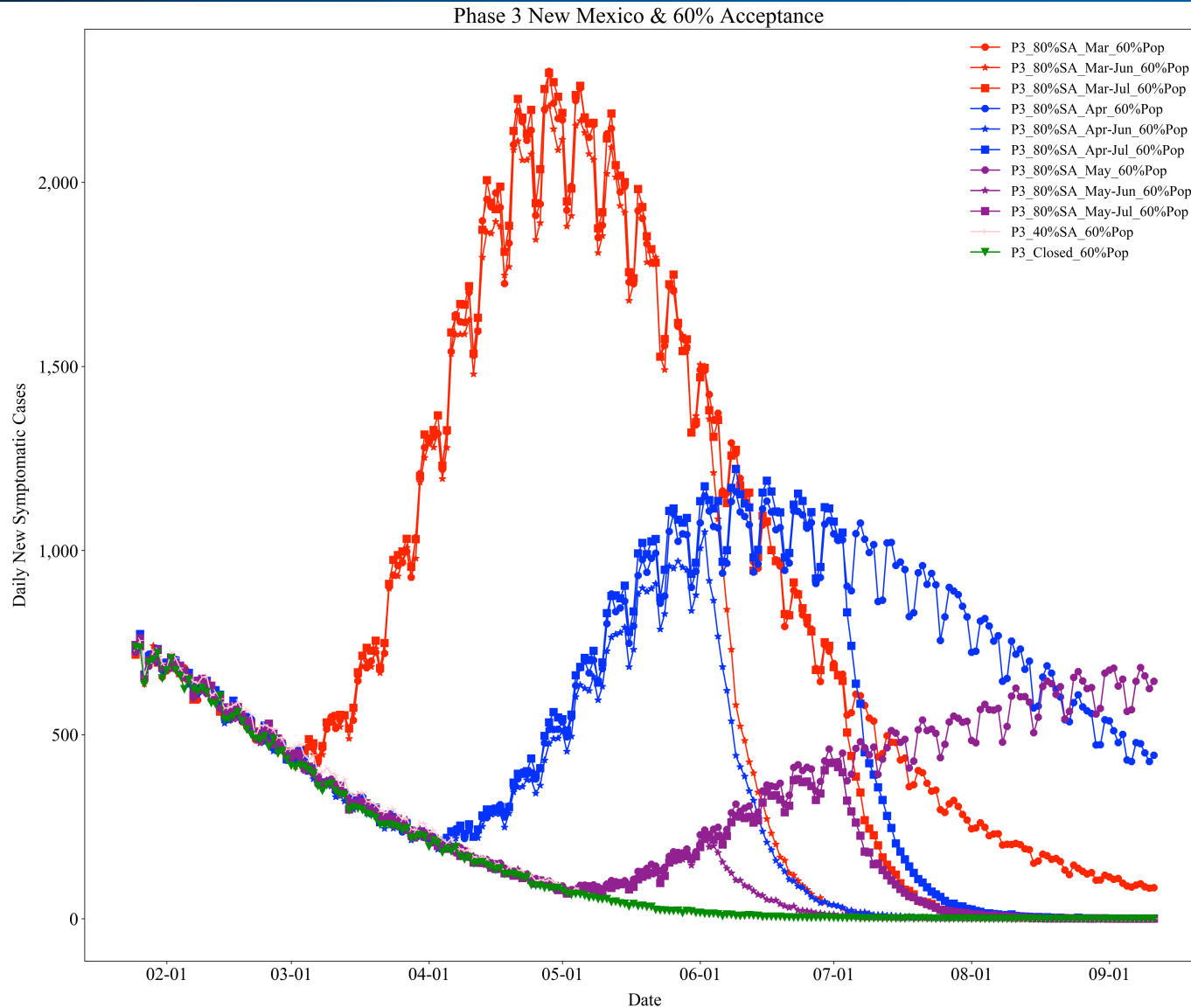
Impact of Vaccine & School Options (Phase 2)



So what?

- Reopening schools (post virtual or hybrid learning) at 80% capacity lead to secondary waves of infection
- Limited vaccine supply and time it takes to develop immunity, contribute to secondary waves of infection
- The hybrid and virtual learning scenarios significantly reduce disease spread and increase the impact of the vaccine
- Results are contingent upon people continuing to wear masks and maintaining social distancing within the community

Impact of Vaccine & School Options (Phase 3)

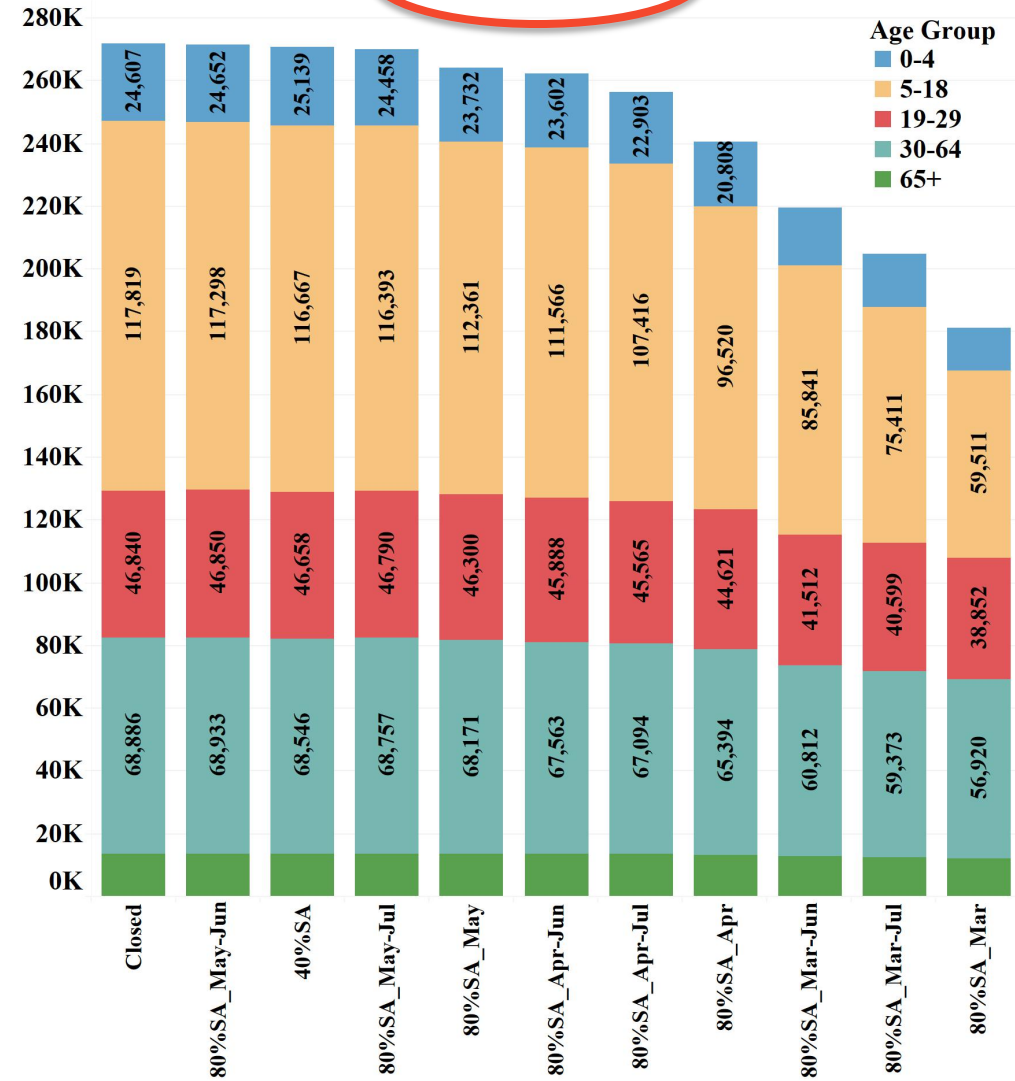


So what?

- Reopening schools (post virtual or hybrid learning) at 80% capacity lead to secondary waves of infection
- Limited vaccine supply and time it takes to develop immunity, contribute to secondary waves of infection
- The hybrid and virtual learning scenarios significantly reduce disease spread and increase the impact of the vaccine
- Phase 3 assumptions will lead to more cases

Cases Averted (Phase 2 vs Phase 3)

Cases Averted from Baseline (60% Vaccine Acceptance Fewer Open Businesses)



Cases Averted from Baseline (80% Vaccine Acceptance More Open Businesses)

