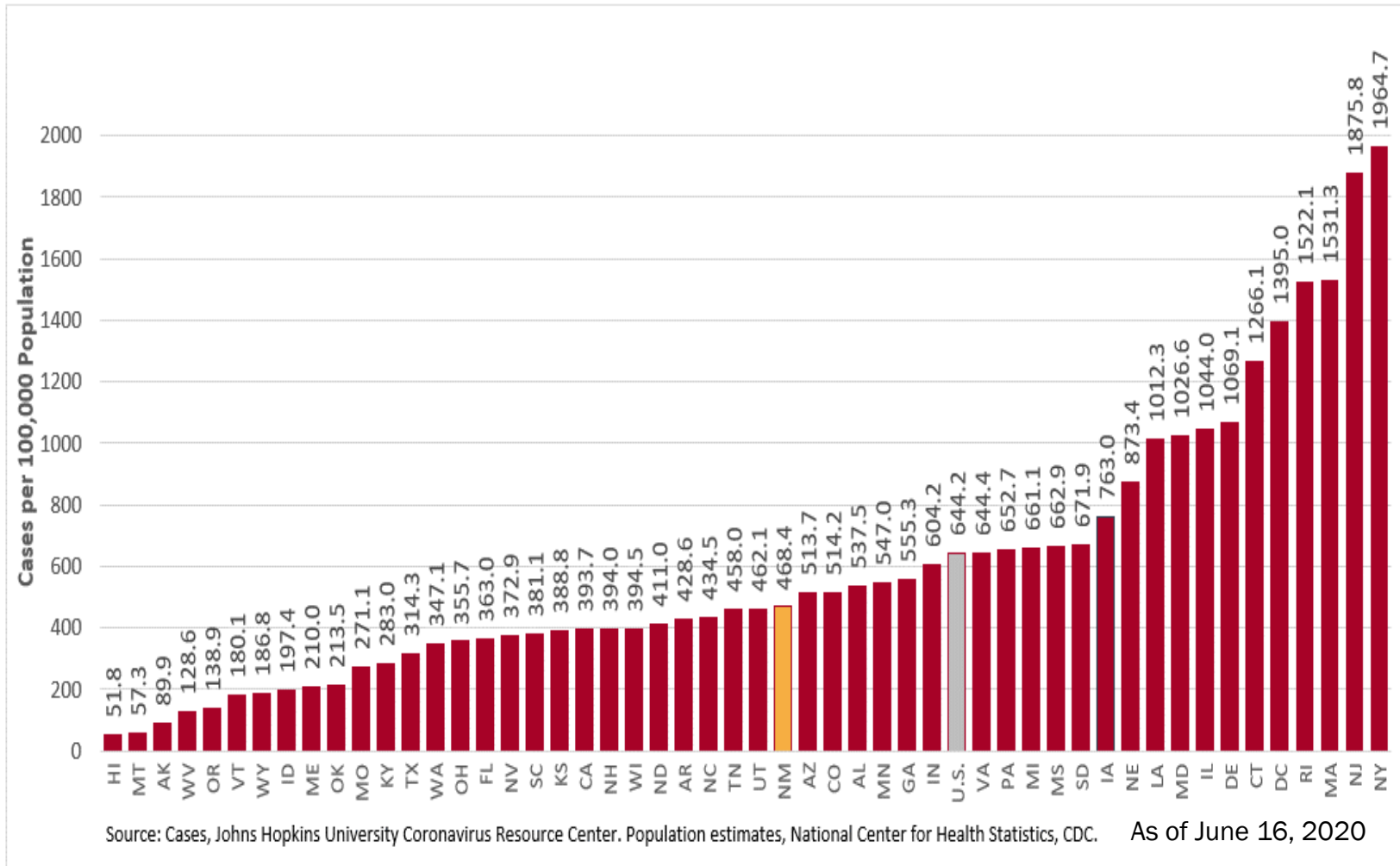


# COVID-19 in New Mexico: Epidemiologic and Modeling Update

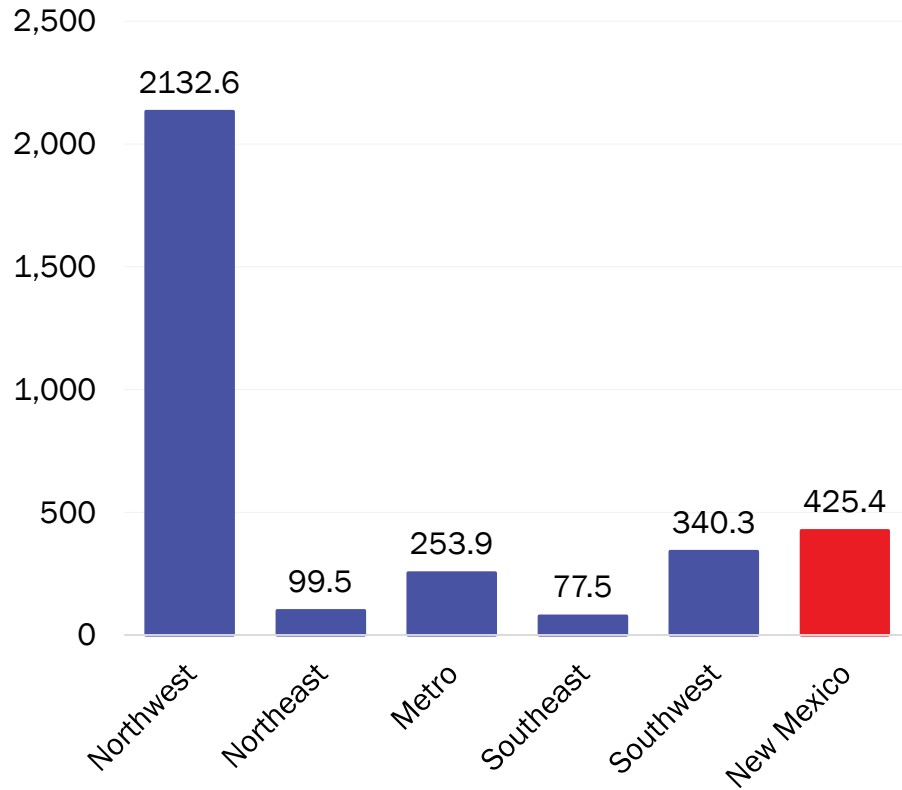
June 16, 2020

# Prevalence: COVID-19 cases per 100,000 by U.S. states

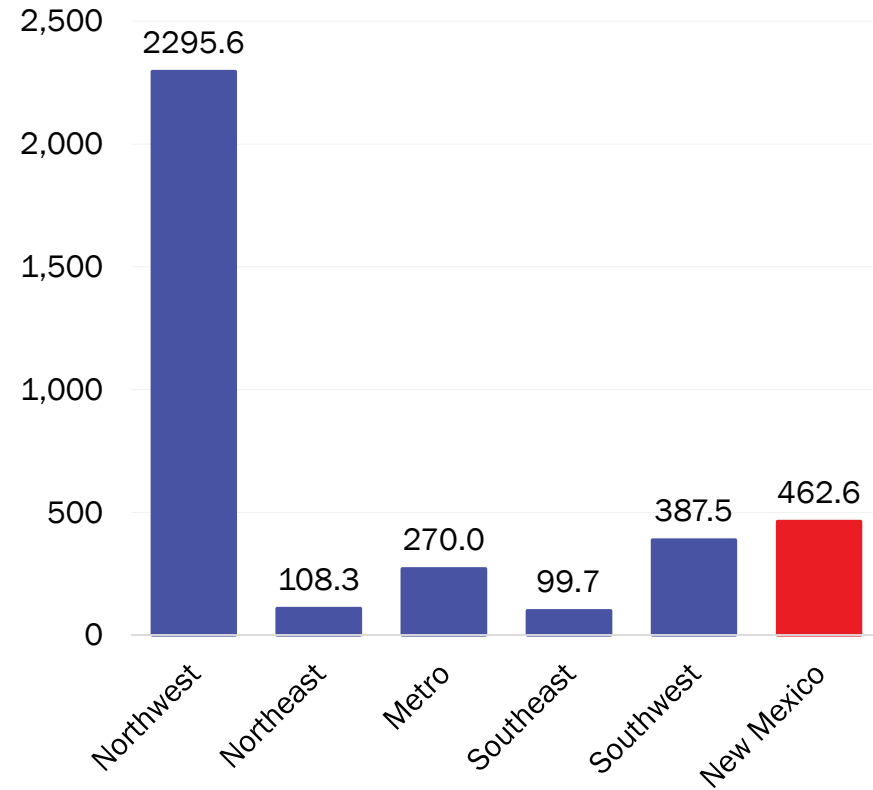


# Prevalence Rate: Number of COVID-19 cases per 100,000 population

June 7, 2020

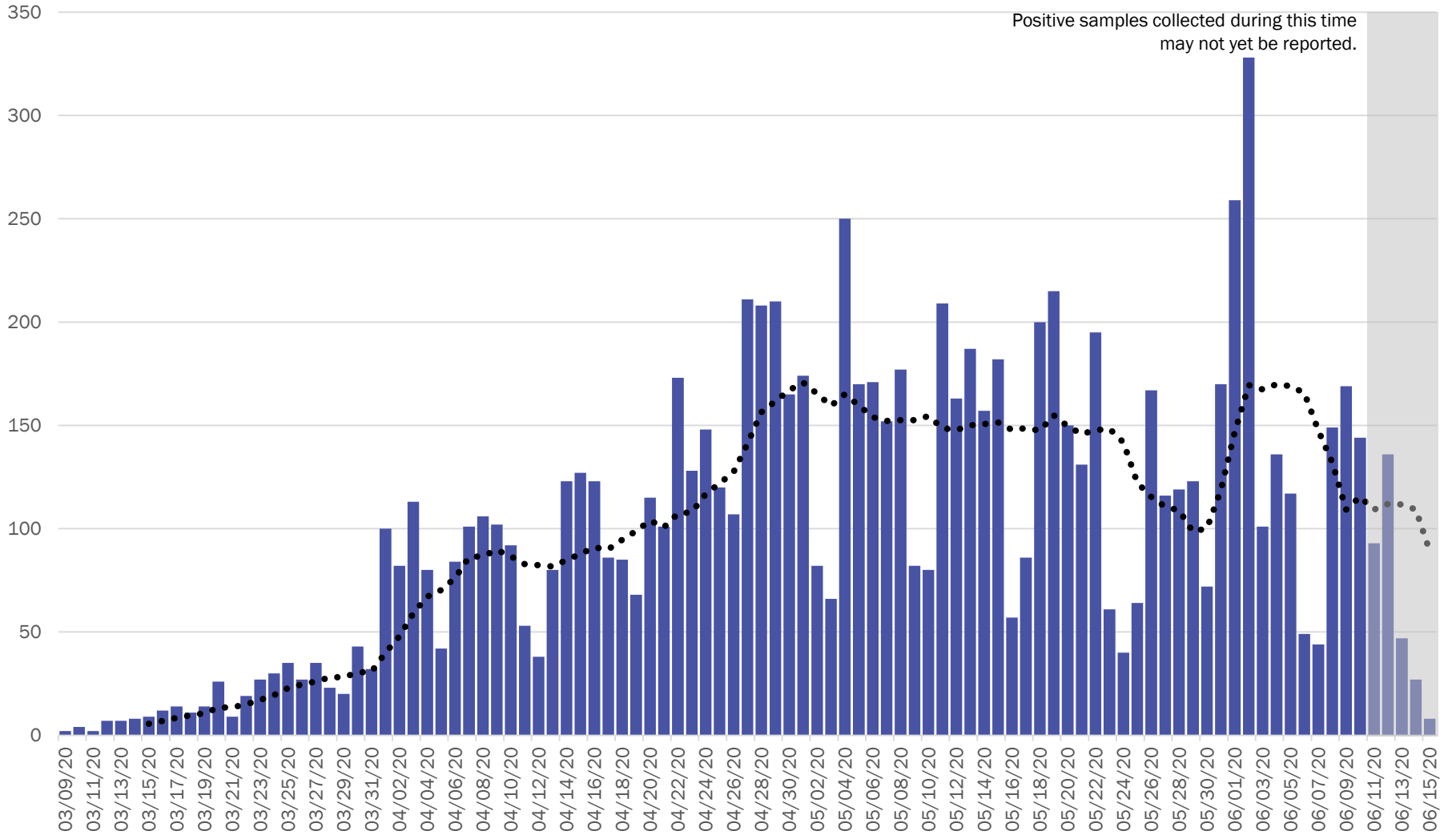


June 14, 2020



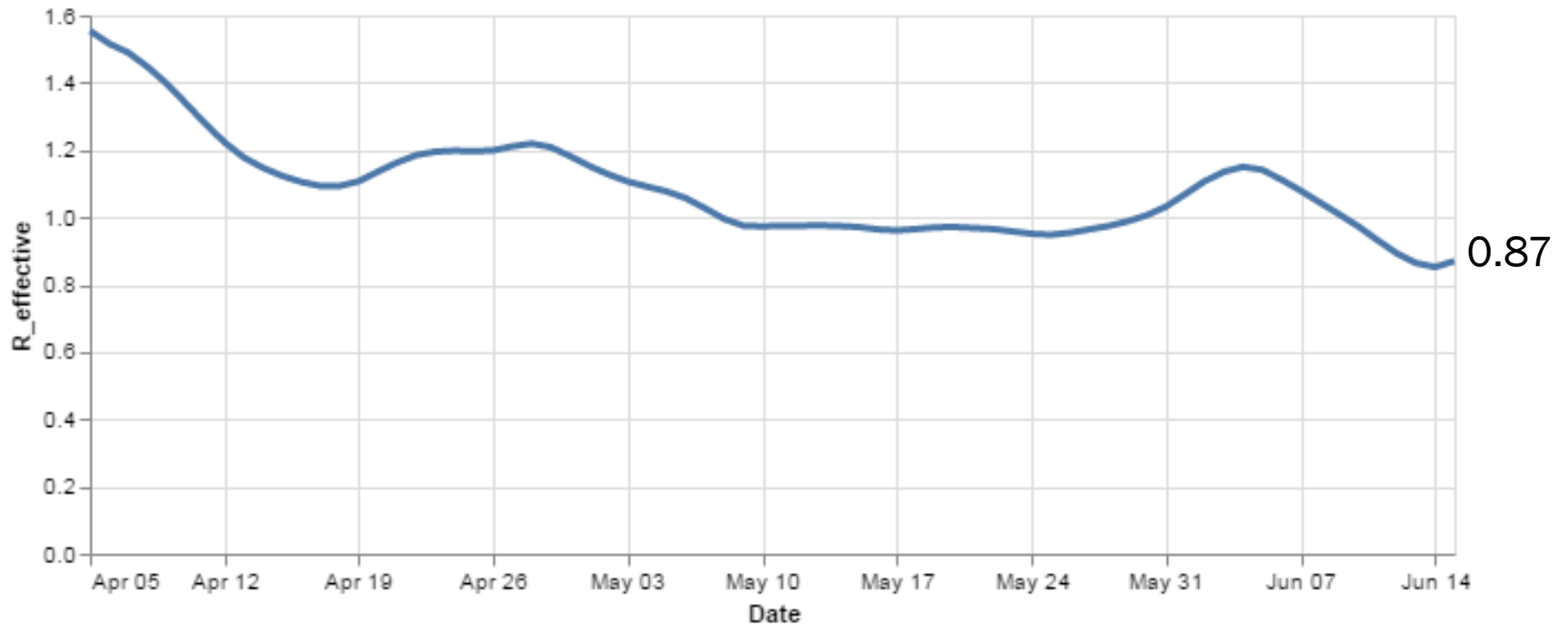
Source: Infectious Disease Epidemiology Bureau, Epidemiology and Response Division 6.14.2020, New Mexico Department of Health. Population estimates, UNM Geospatial and Population Studies Program.

# New Mexico COVID-19 Cases by Date of Specimen Collection – 6/16/20



R-effective calculations have been updated, making the measure more responsive to changes in case counts.

R\_effective over time, state



0.87

Courtesy of Presbyterian Healthcare Services – June 16, 2020.

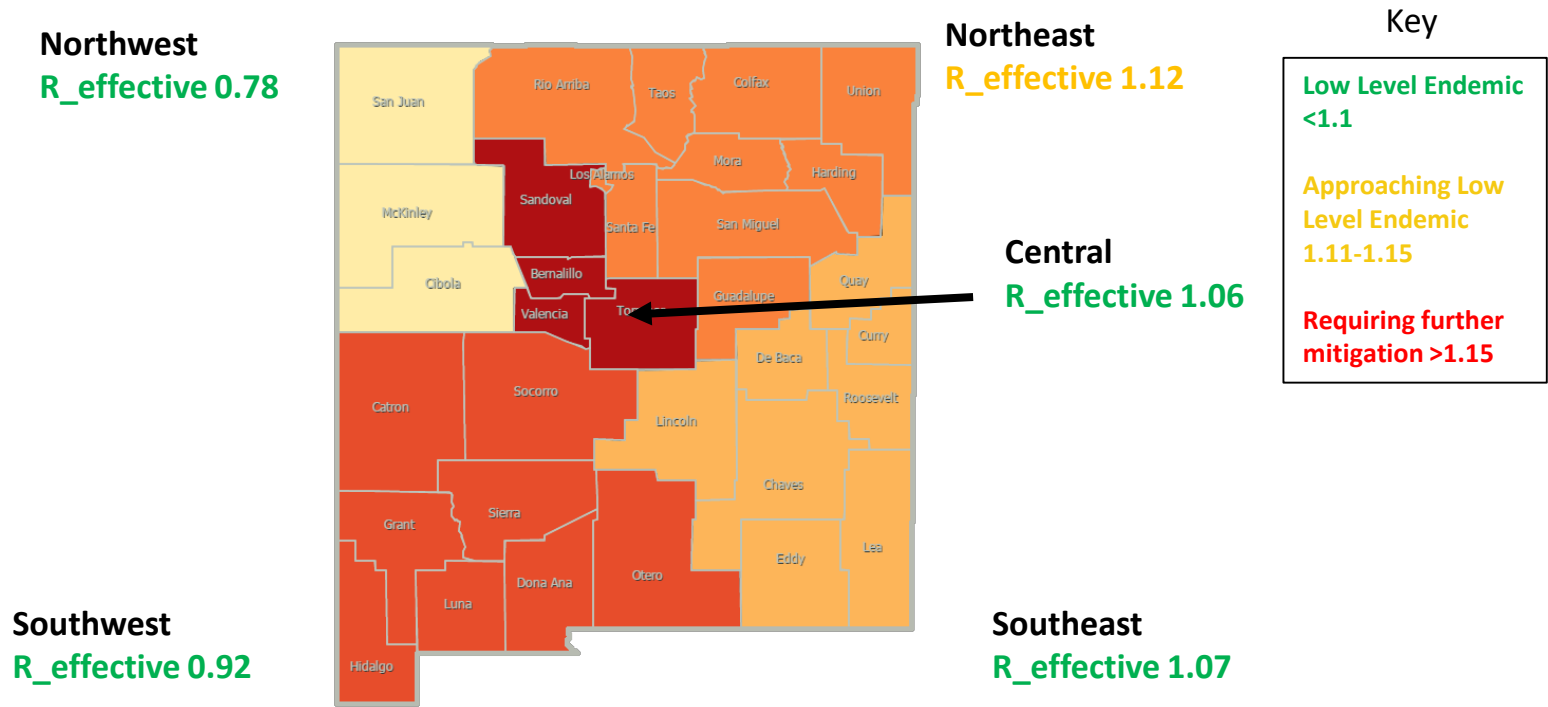


*Investing for tomorrow, delivering today.*



1190 S. St. Francis Drive • Santa Fe, NM 87505 • Phone: 505-827-2613 • Fax: 505-827-2530 • nmhealth.org

# R-effective calculations have been updated, making the measure more responsive to changes in case counts.



Courtesy of Presbyterian Healthcare Services – June 16, 2020.

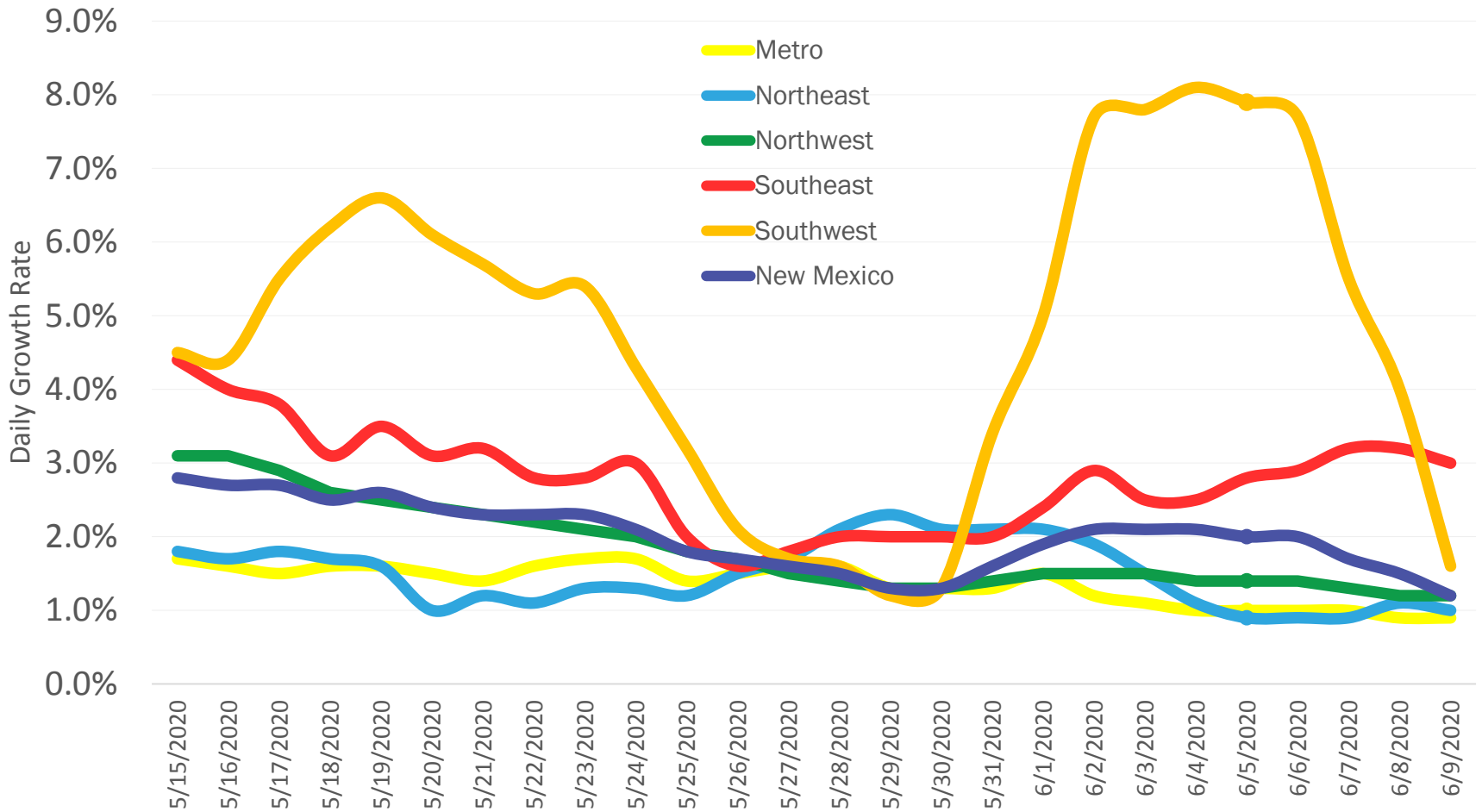


*Investing for tomorrow, delivering today.*



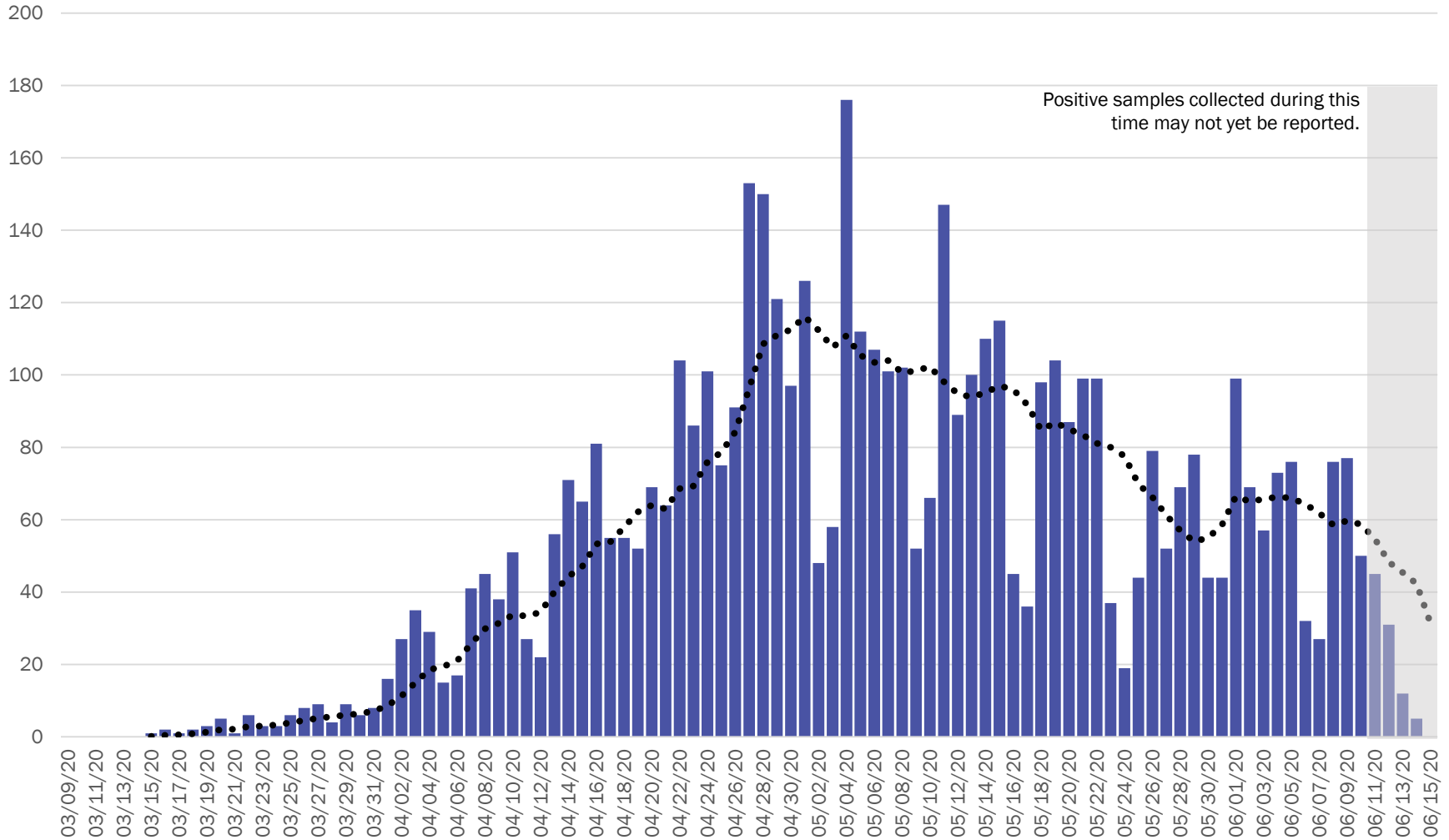
1190 S. St. Francis Drive • Santa Fe, NM 87505 • Phone: 505-827-2613 • Fax: 505-827-2530 • nmhealth.org

# Daily rate of growth of COVID-19 cases 7-day rolling average by region – 6/15/20



# Northwest Region Case Count by Collection Date with 7 Day Moving Average

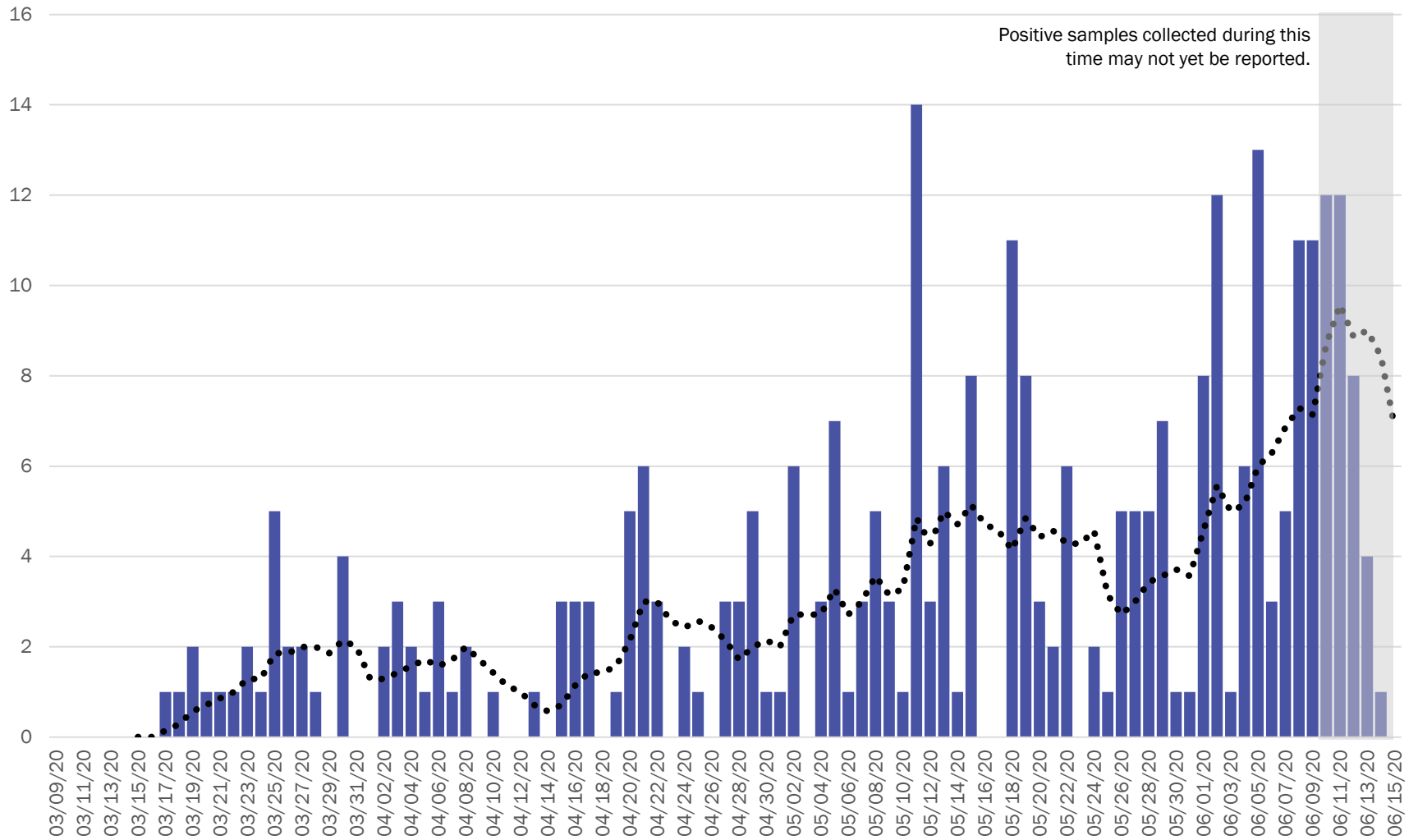
## June 16, 2020



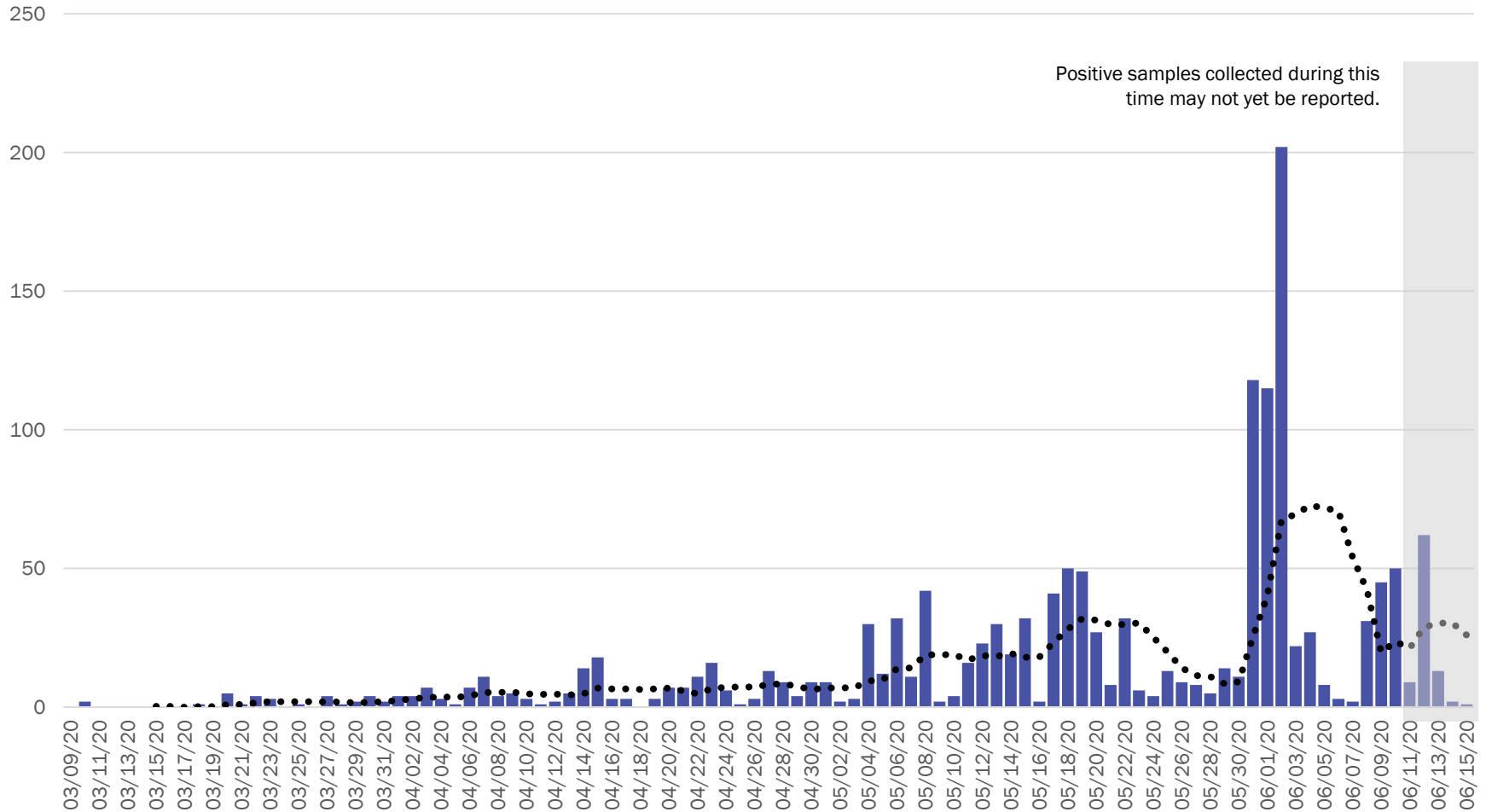


# Southeast Region Case Count by Collection Date with 7 Day Moving Average

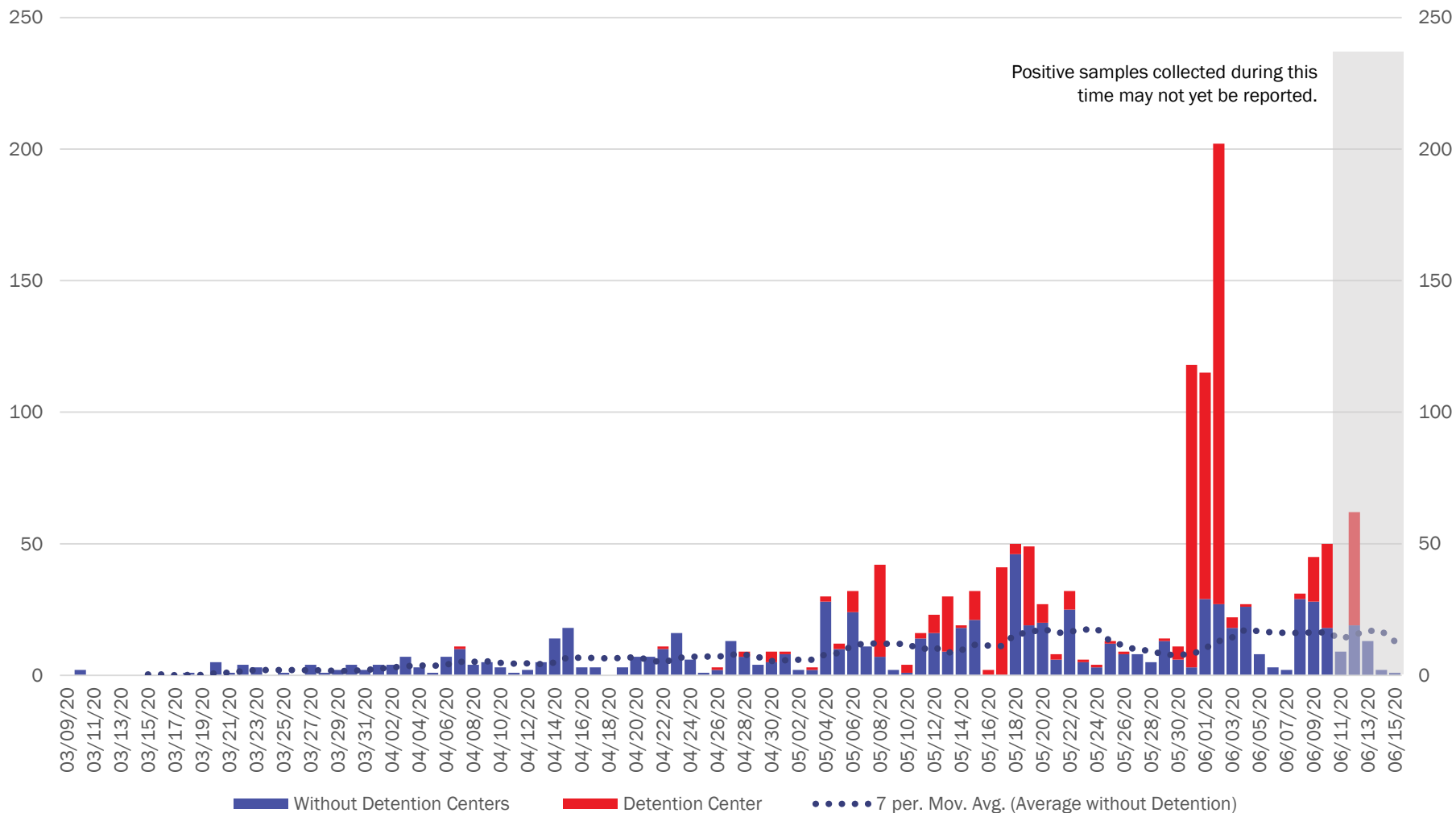
## June 16, 2020



## Southwest Region Case Count by Collection Date with 7 Day Moving Average June 16, 2020

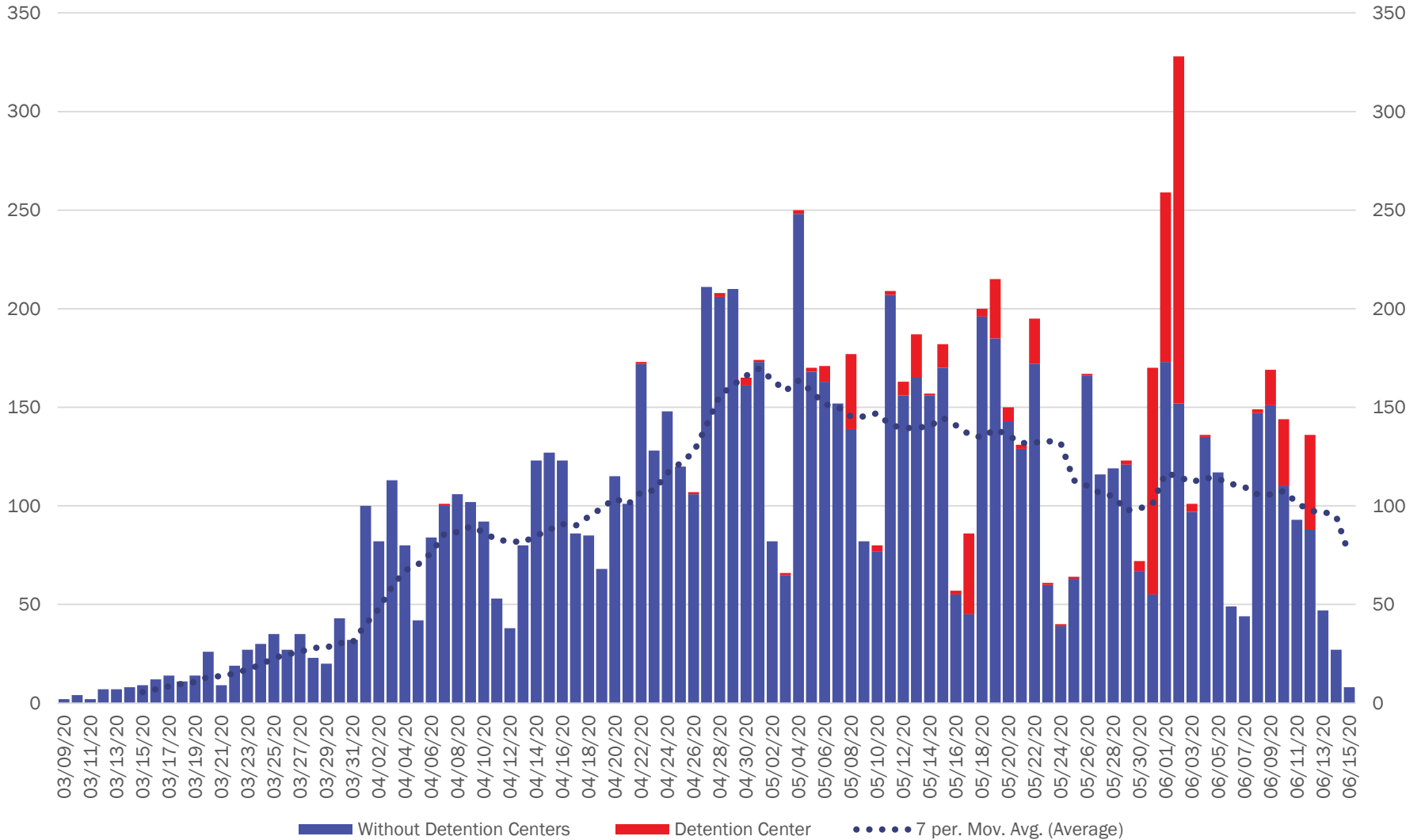


## Southwest Case Count by Collection Date - 6/16/2020



Investing for tomorrow, delivering today.

# New Mexico Case Count by Collection Date - 6/16/2020

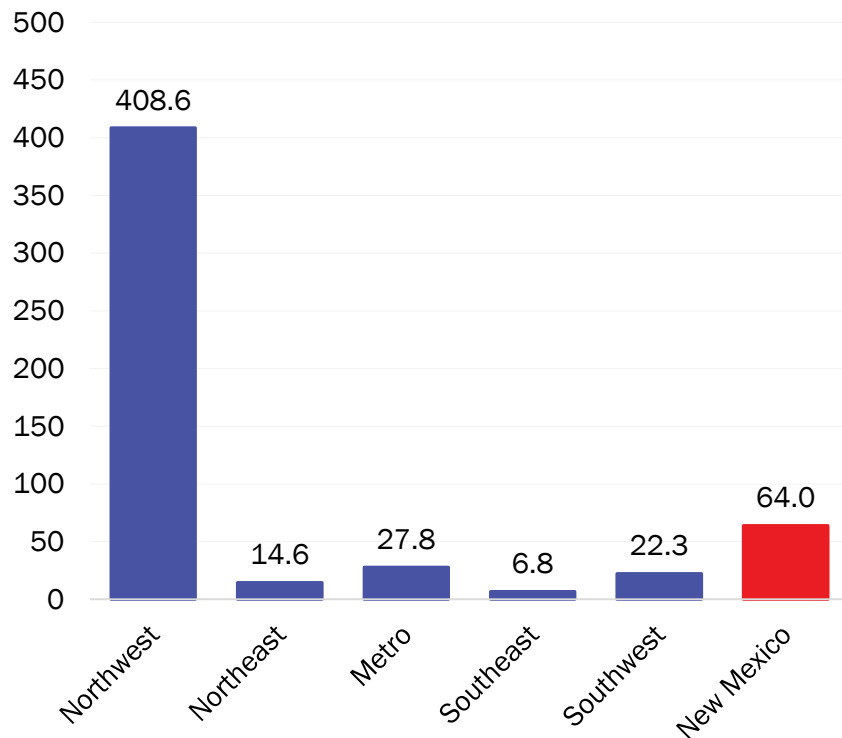


Investing for tomorrow, delivering today.

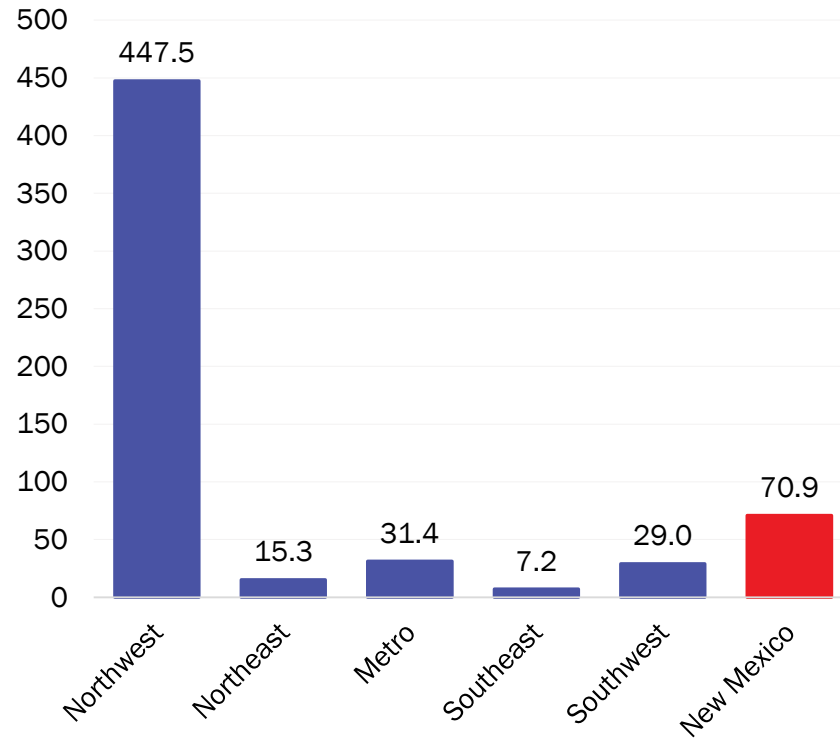
1190 S. St. Francis Drive • Santa Fe, NM 87505 • Phone: 505-827-2613 • Fax: 505-827-2530 • nmhealth.org

# Hospitalization Rate: Number of COVID-19 cases per 100,000 population

June 8, 2020

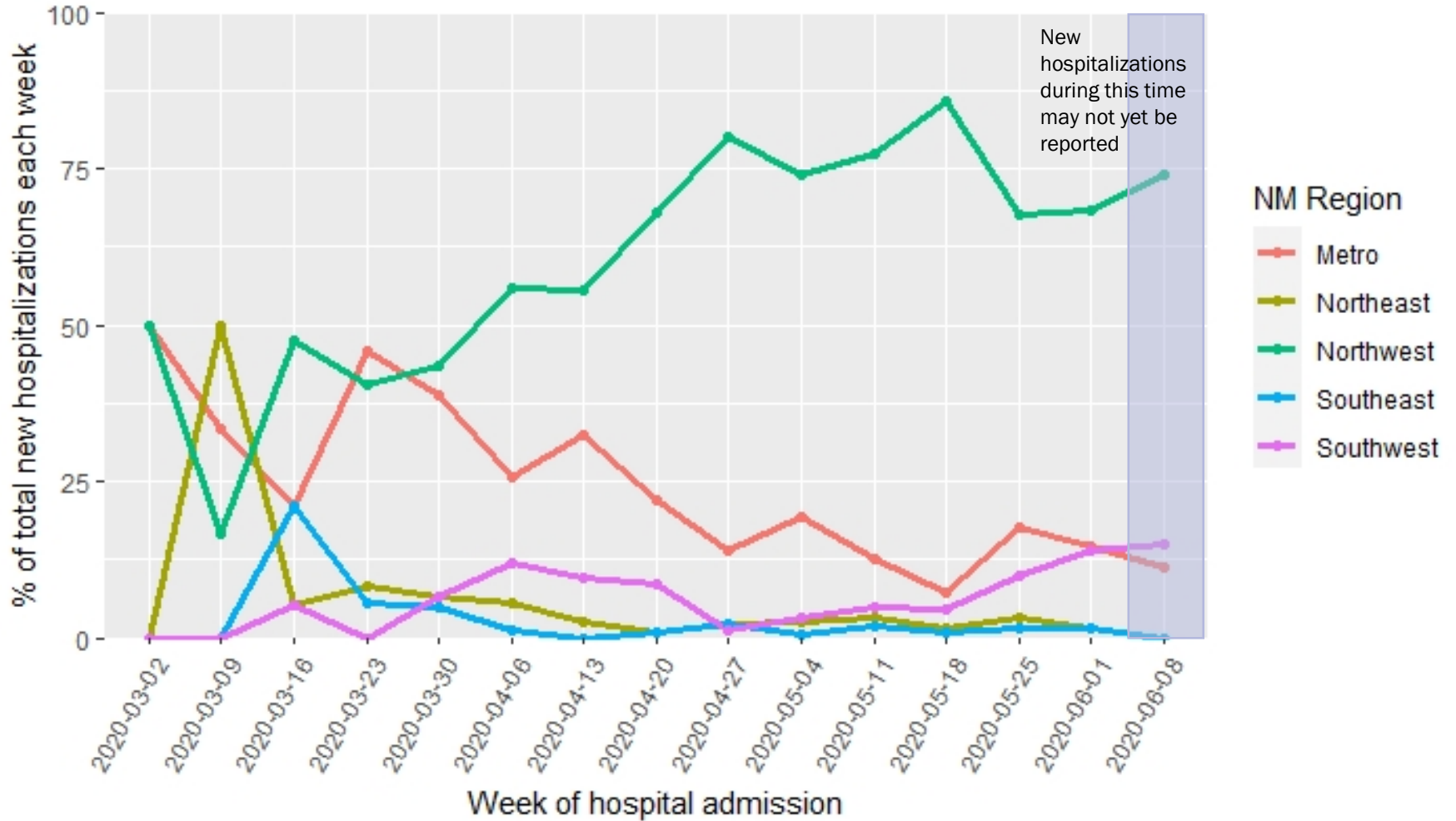


June 15, 2020



Source: Infectious Disease Epidemiology Bureau, Epidemiology and Response Division 6.15.2020, New Mexico Department of Health. Population estimates, UNM Geospatial and Population Studies Program.

# New COVID-19 hospitalizations each week

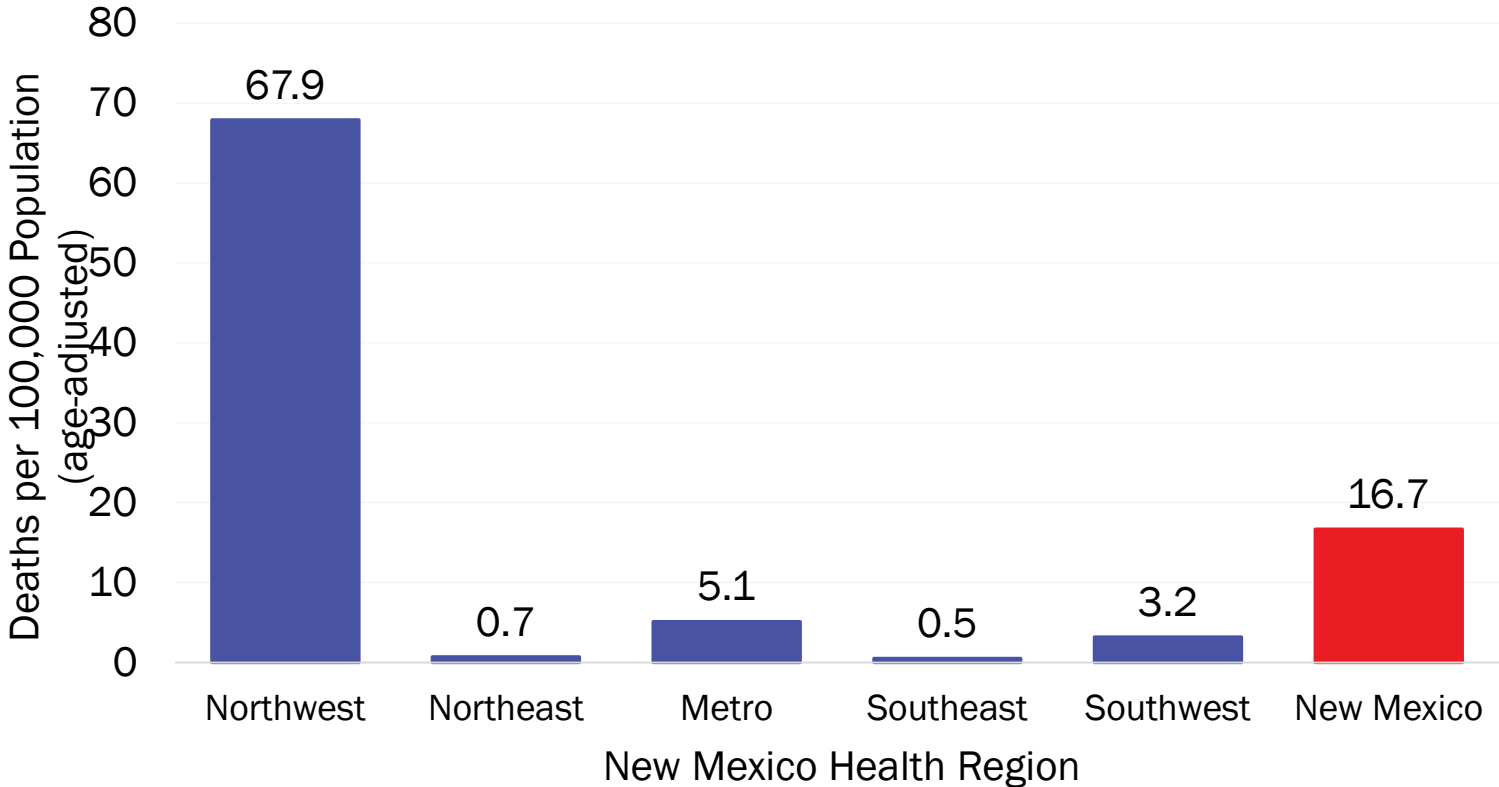


# COVID-19 hospitalizations and ventilator use



As of June 12, 2020

# Mortality Rate: Number of COVID-19 deaths per 100,000 population



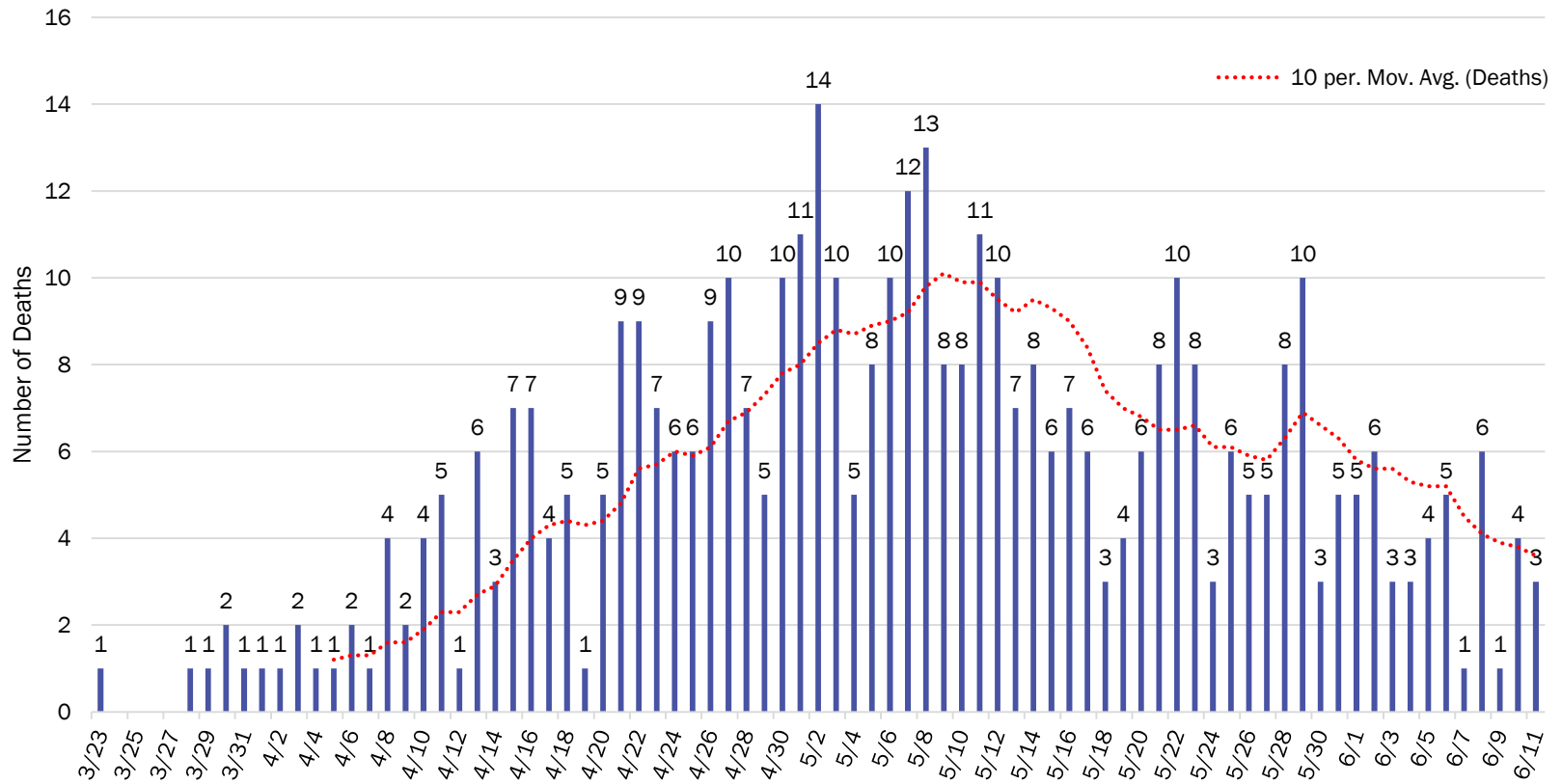
Rates have been age-adjusted to the U.S. 2000 standard population.  
Source: Bureau of Vital Records and Health Statistics and Infectious Disease Epidemiology Bureau, Epidemiology and Response Division 6.14.2020, New Mexico Department of Health. Population estimates, UNM Geospatial and Population Studies Program.



*Investing for tomorrow, delivering today.*



# COVID-19 Deaths by Date of Death, New Mexico



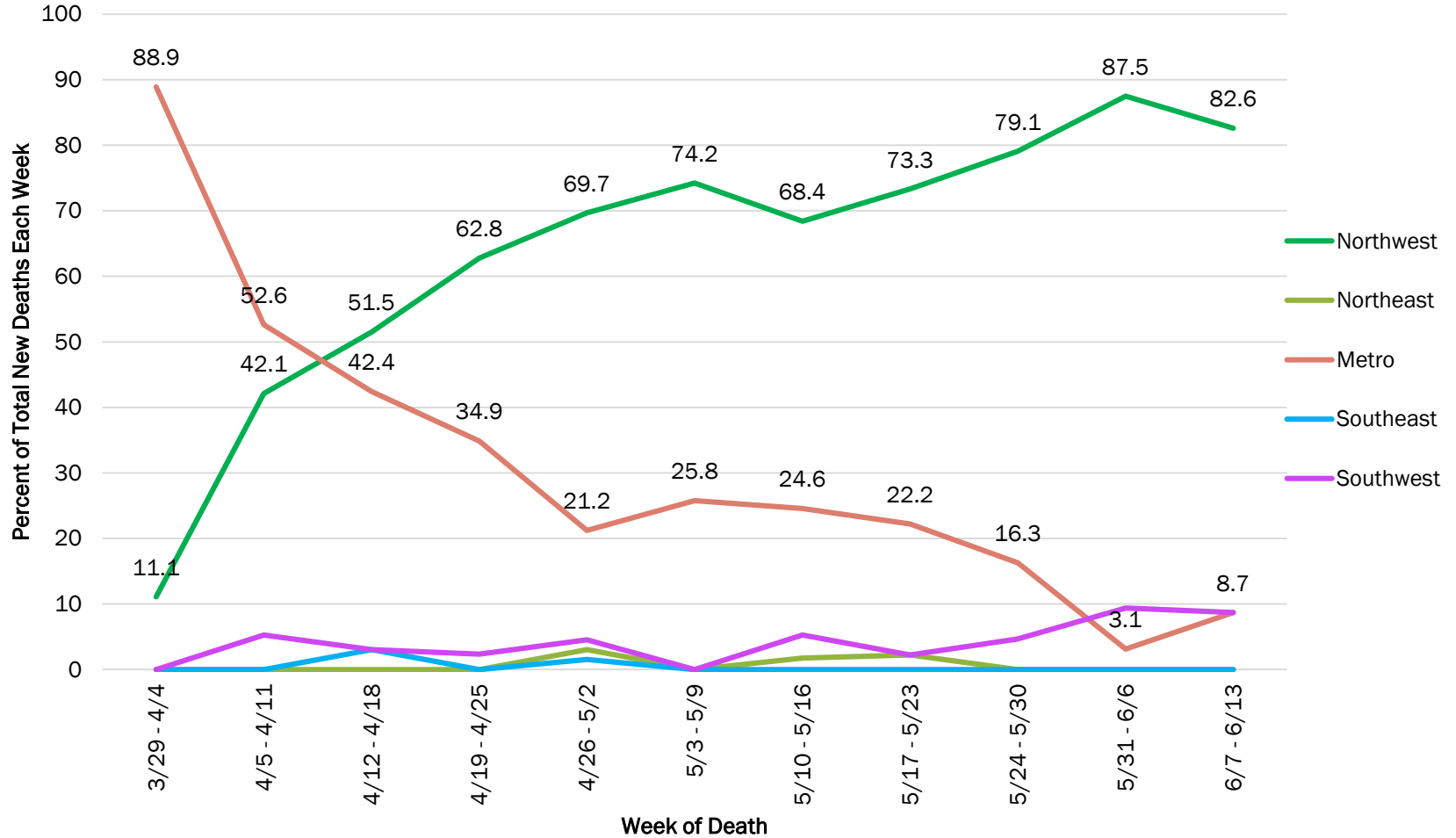
Reporting through 6/12/2020



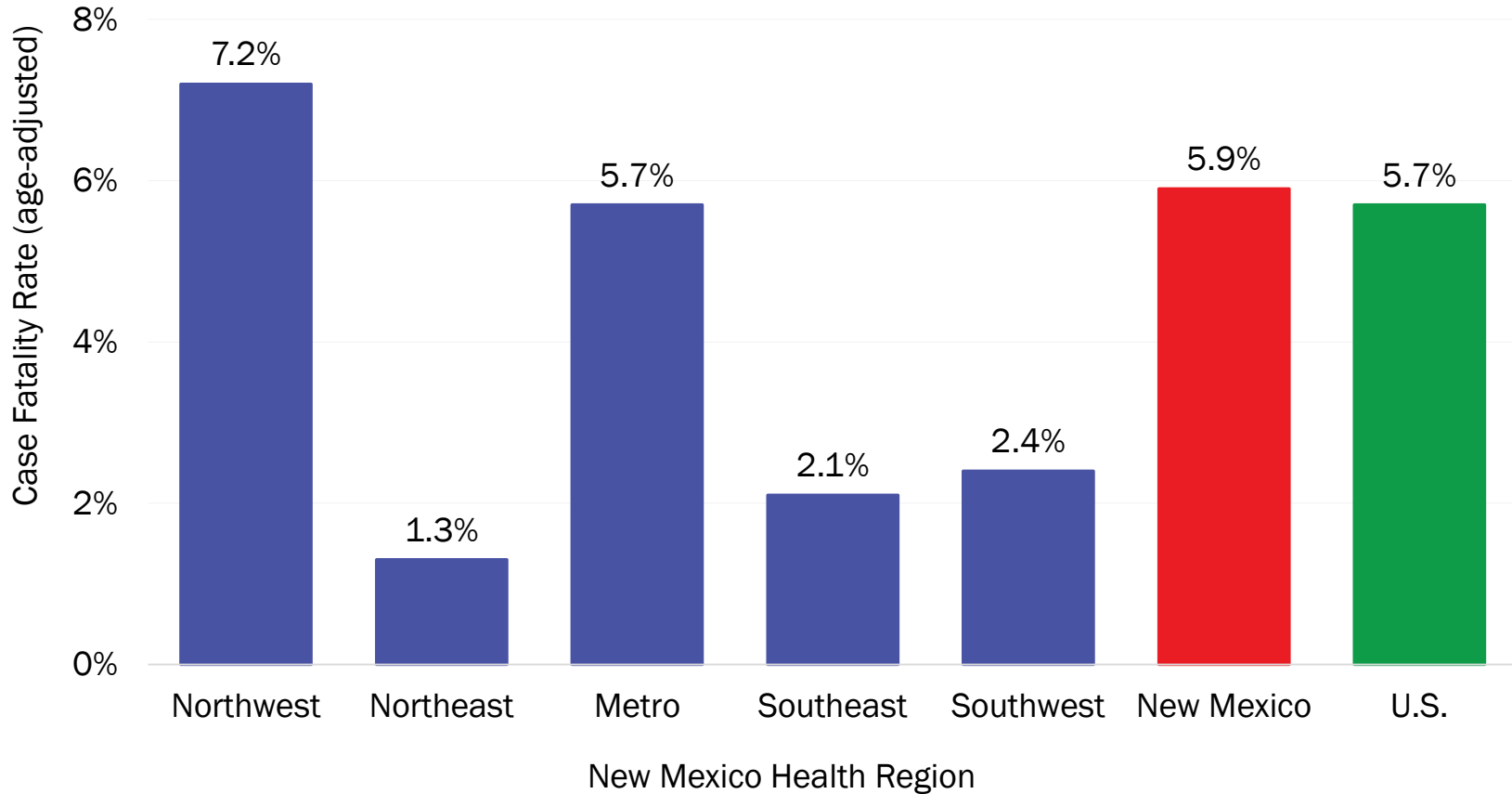
Investing for tomorrow, delivering today.

1190 S. St. Francis Drive • Santa Fe, NM 87505 • Phone: 505-827-2613 • Fax: 505-827-2530 • nmhealth.org

# New COVID-19 Deaths by Week and Region



# Case Fatality Rate: Percentage of COVID-19 cases resulting in death (age-adjusted)



Rates have been age-adjusted to U.S. COVID-19 cases.

Source: Bureau of Vital Records and Health Statistics and Infectious Disease Epidemiology Bureau, Epidemiology and Response Division, reporting through 6.14.2020, New Mexico Department of Health.

# Supplementary Slides

# Modeling Assumptions

Variable	Measured Value	Value as of 6.16.20
R_Effective	Actual Measured Daily Value by key county	R_eff=0.87
Positive Test Multiplier	Calculated by LANL	4.5
Hospitalization and Mortality	Actual rolling value / estimated number of total infected	Medical 0.3% ICU 0.3% Vent Rate 66.7% of ICU Crude Case Fatality Rate 4.5%
Length of Stay	Actual rolling value / estimated number of total infected	Medical 5 days ICU 14 days ICU on Vent 14 days