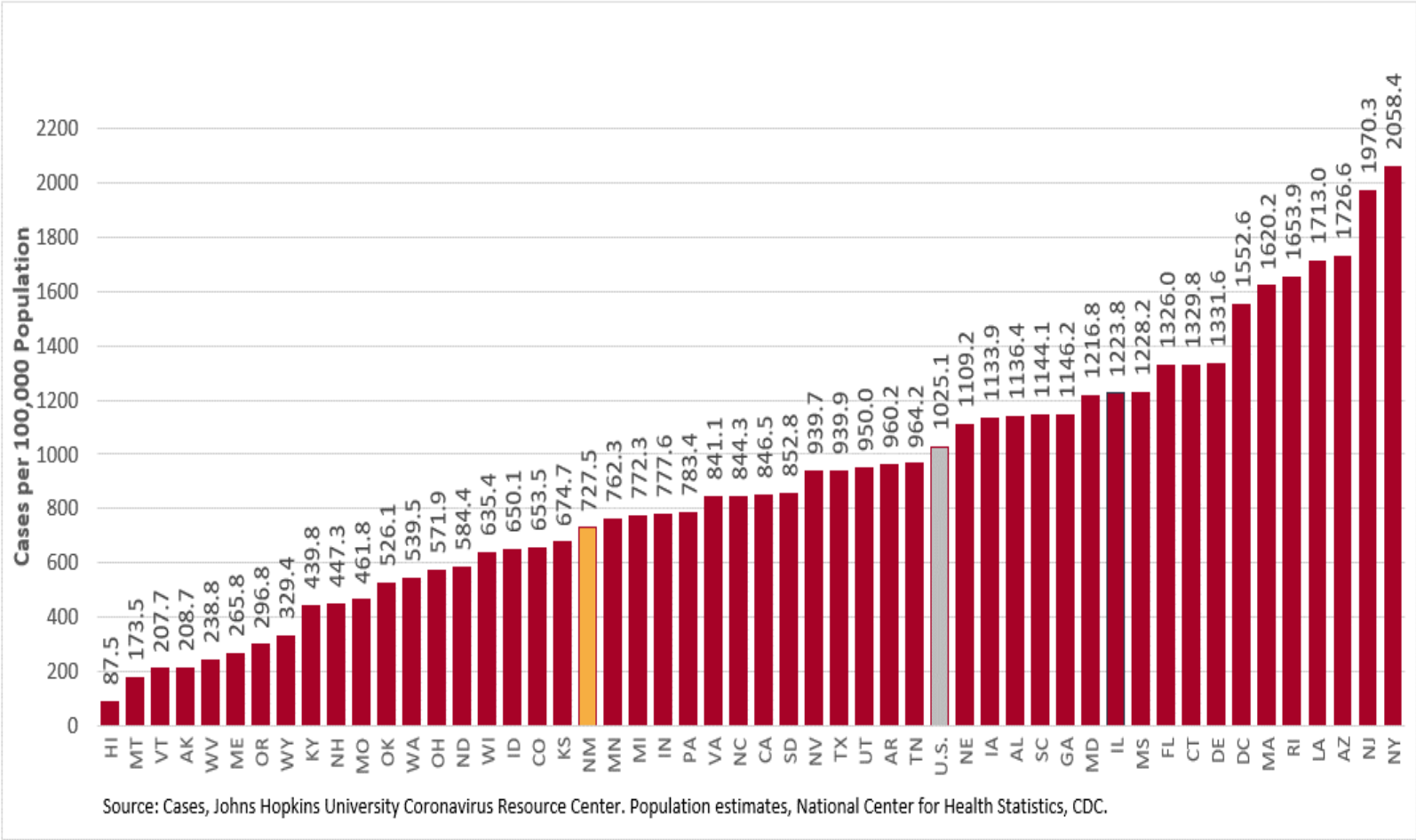


COVID-19 in New Mexico: Epidemiologic and Modeling Update

July 14, 2020

New Mexico has the 32nd highest prevalence in the United States



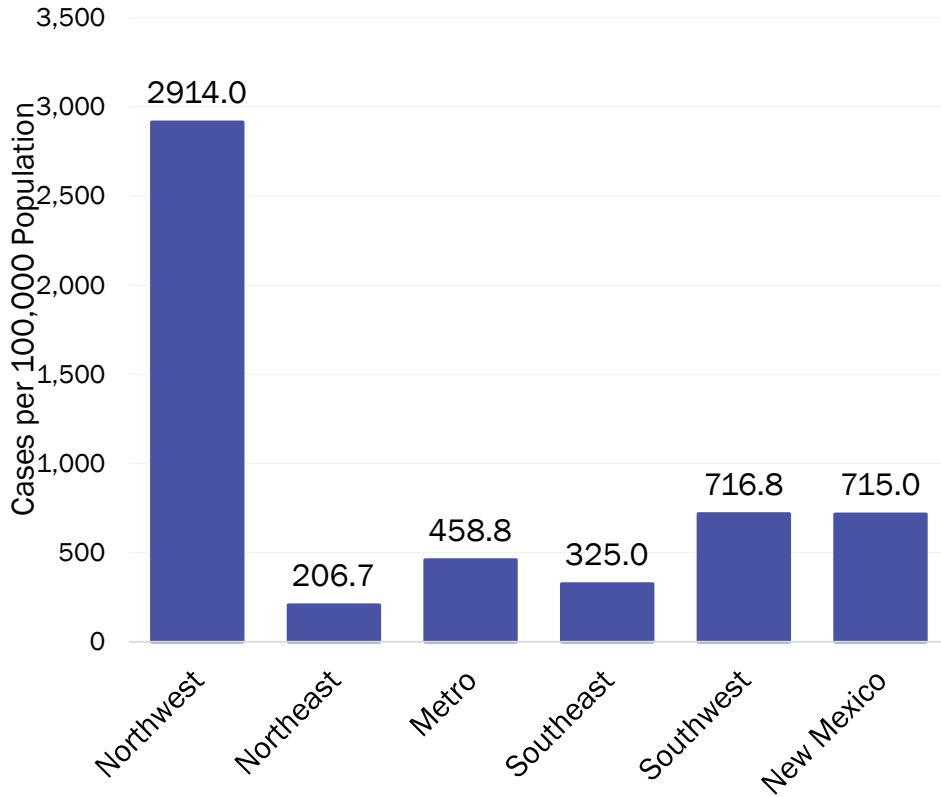
As of July 14, 2020



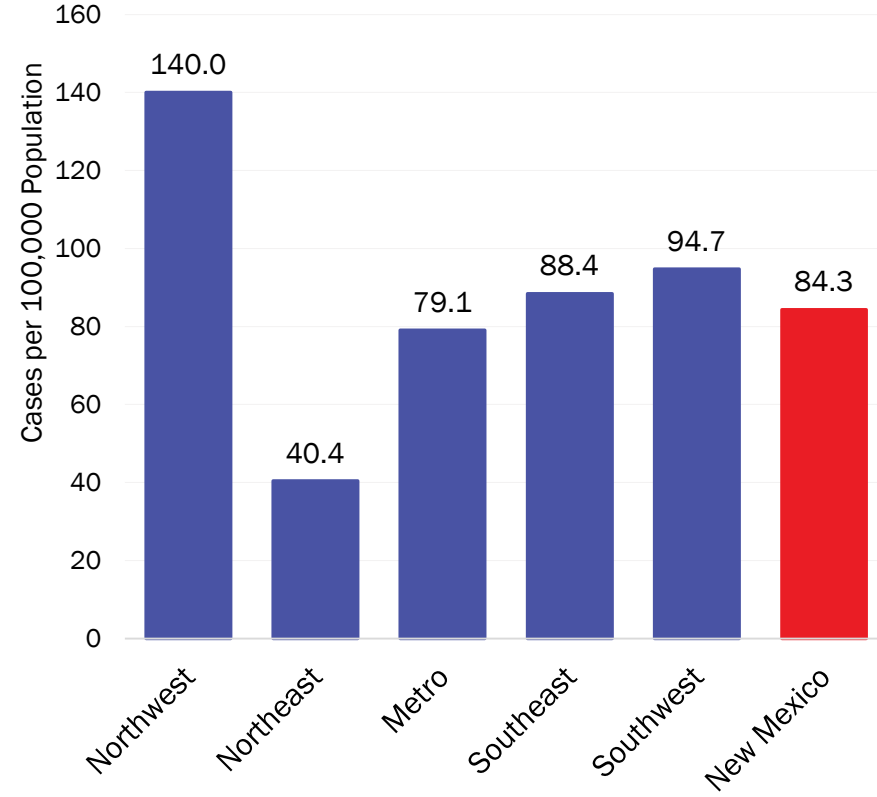
Investing for tomorrow, delivering today.

COVID-19 prevalence per 100,000 population

Year-to-Date



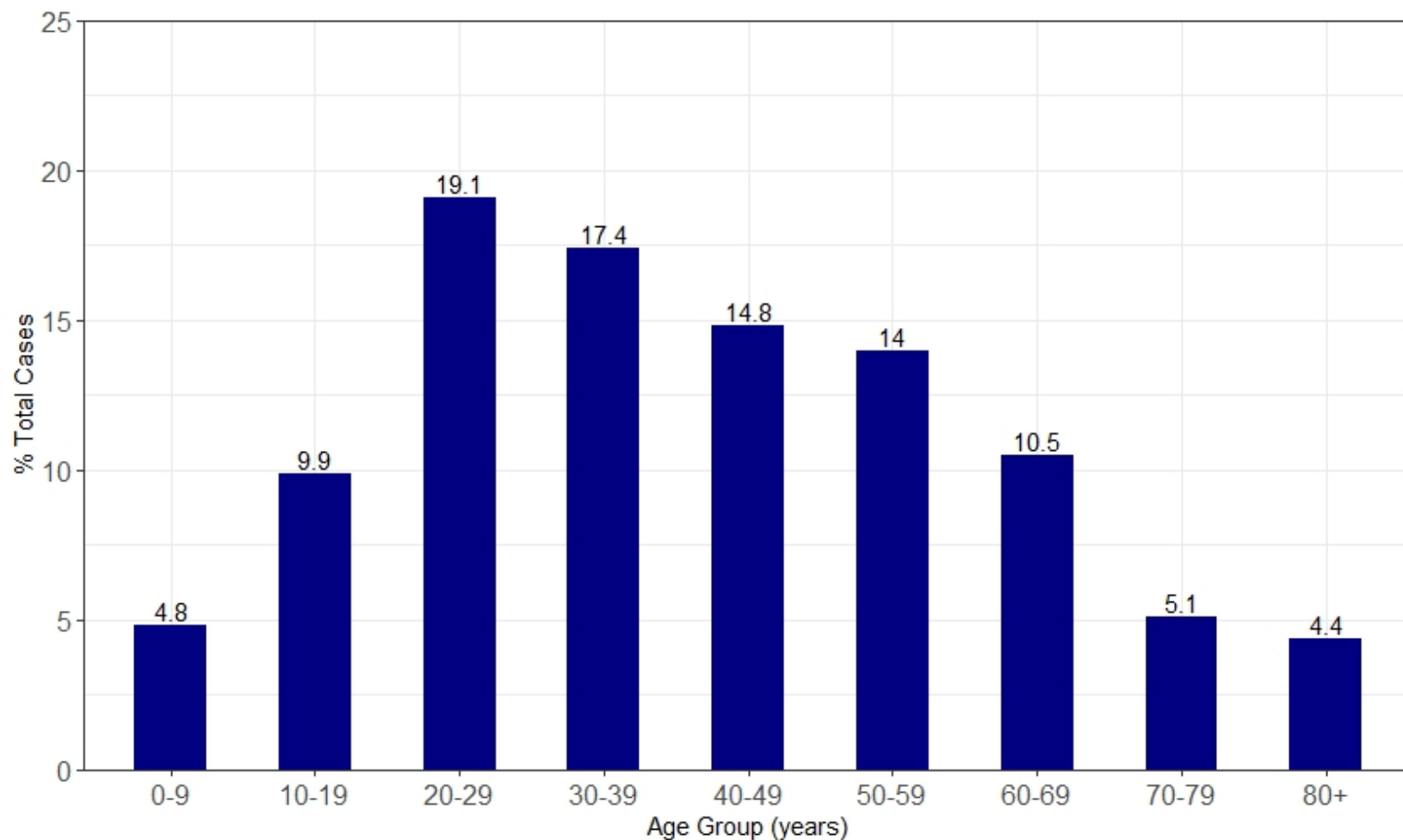
Last 7 days



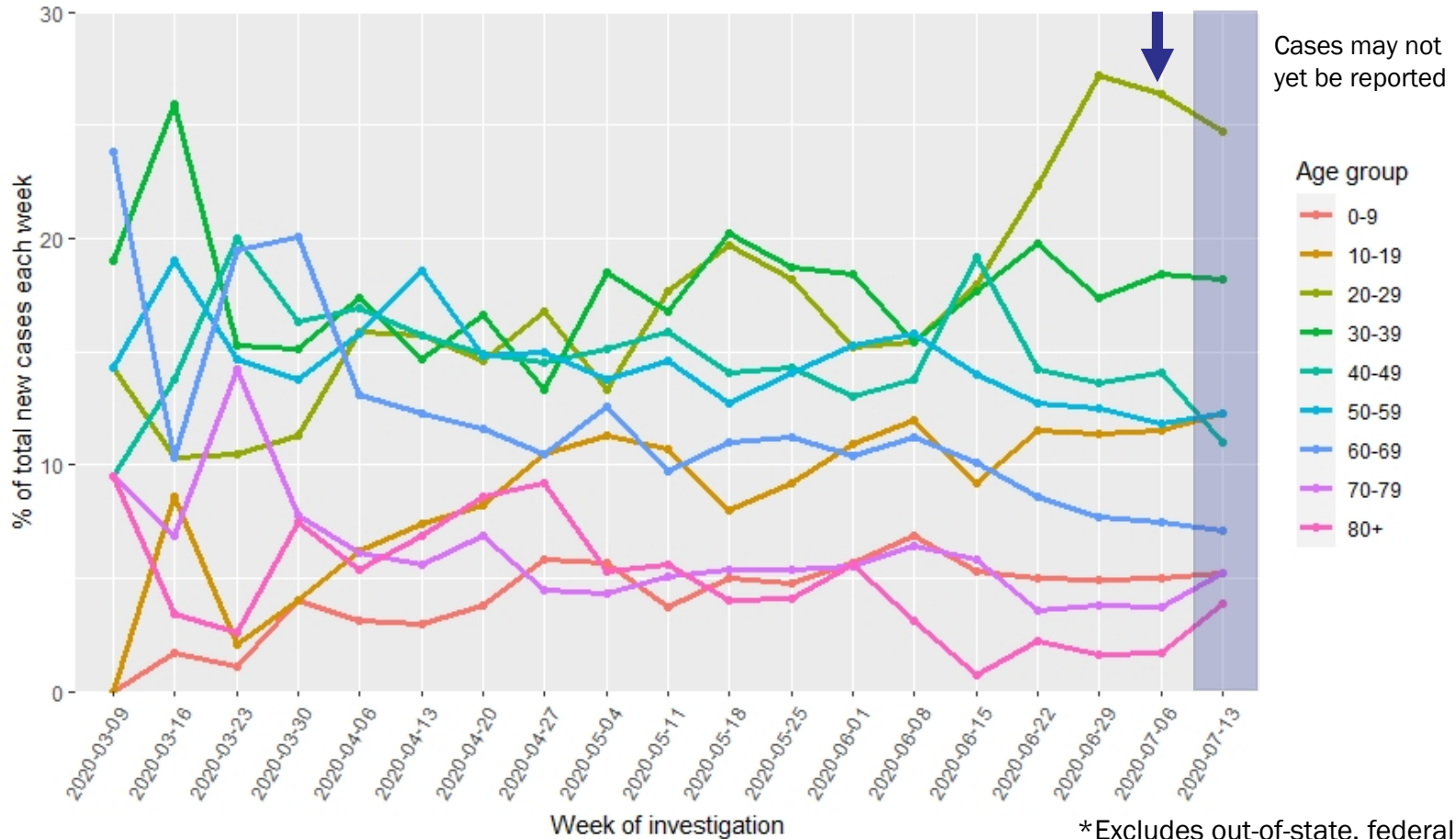
Source: Infectious Disease Epidemiology Bureau, Epidemiology and Response Division 7.12.2020, New Mexico Department of Health. Population estimates, UNM Geospatial and Population Studies Program.

The highest percentage of total cases are in the 20-29 years old age group, followed by the 30-39 years old age group.

(excludes out-of-state, federal and state detention and correctional facilities)

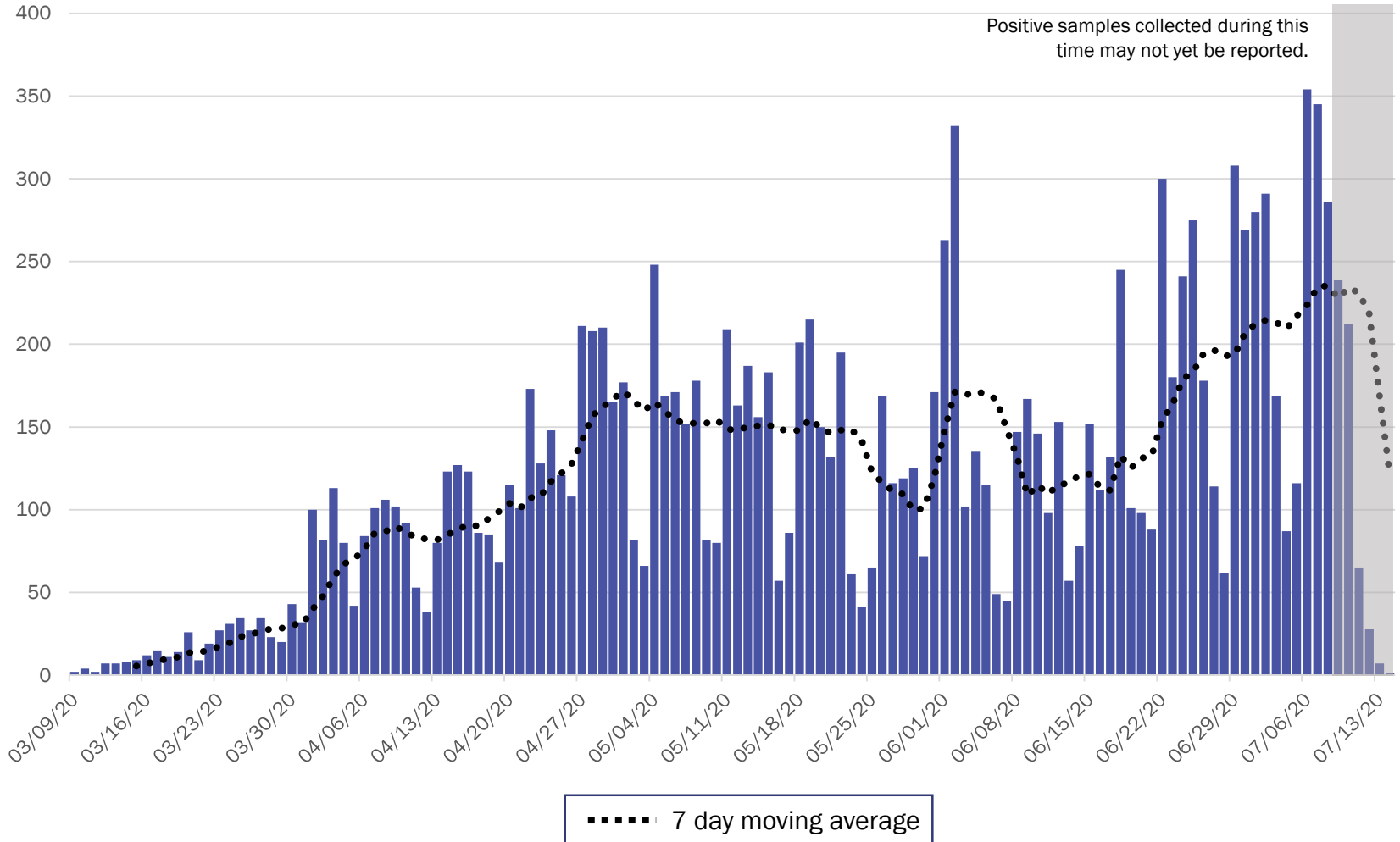


The 20-29 year old age group has made up the largest percentage of new cases each week starting in mid-June followed by age groups 30-39 and 40-49 years old. The 20-29 years old age group made up a little over 25% of new cases investigated last week.



*Excludes out-of-state, federal and state detention and correctional facilities

New Mexico COVID-19 Cases by Date of Specimen Collection – 7/14/20



Source: Infectious Disease Epidemiology Bureau, Epidemiology and Response Division 7.14.2020, New Mexico Department of Health.



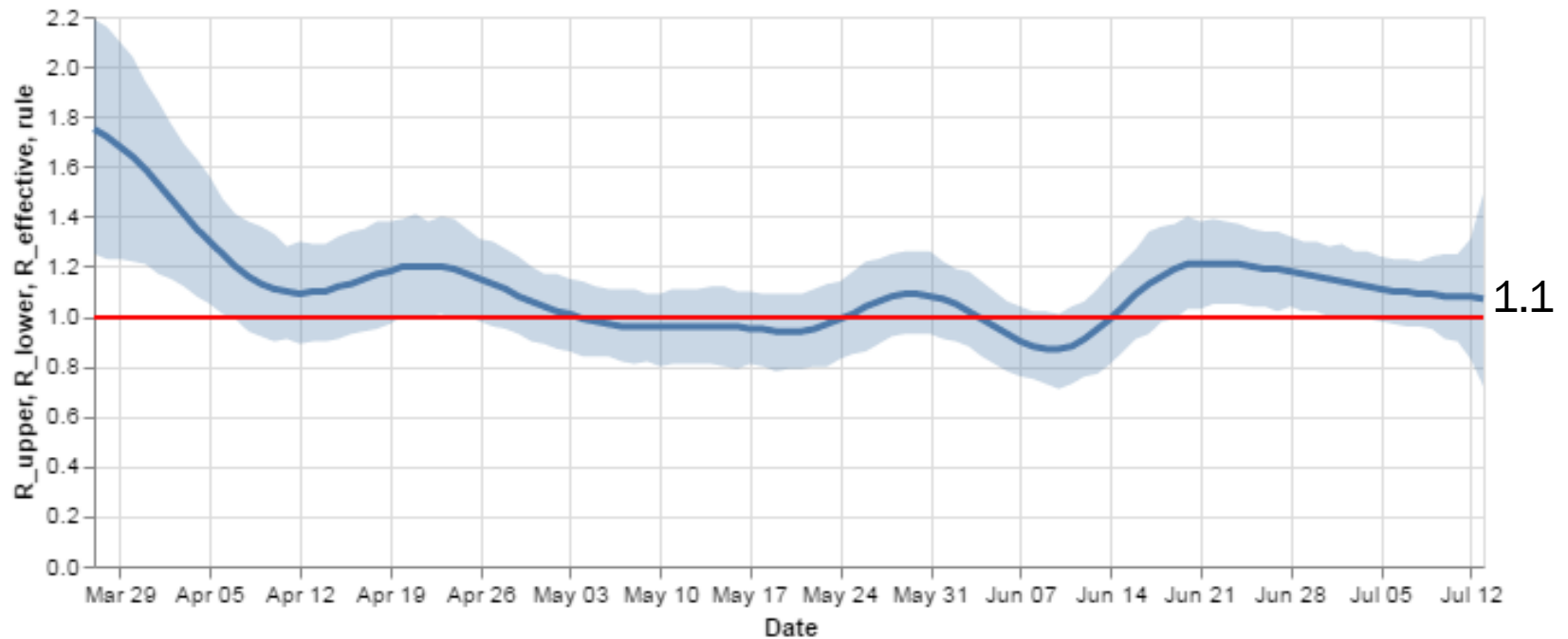
Investing for tomorrow, delivering today.



1190 S. St. Francis Drive • Santa Fe, NM 87505 • Phone: 505-827-2613 • Fax: 505-827-2530 • nmhealth.org

Statewide R-effective has decreased to 1.1.

R_effective over time, STATE



1.1

Courtesy of Presbyterian Healthcare Services – July 13, 2020.

Key

- Low Level Endemic <1.0
- Approaching Low Level Endemic 1.0-1.05
- Requiring further mitigation >1.05

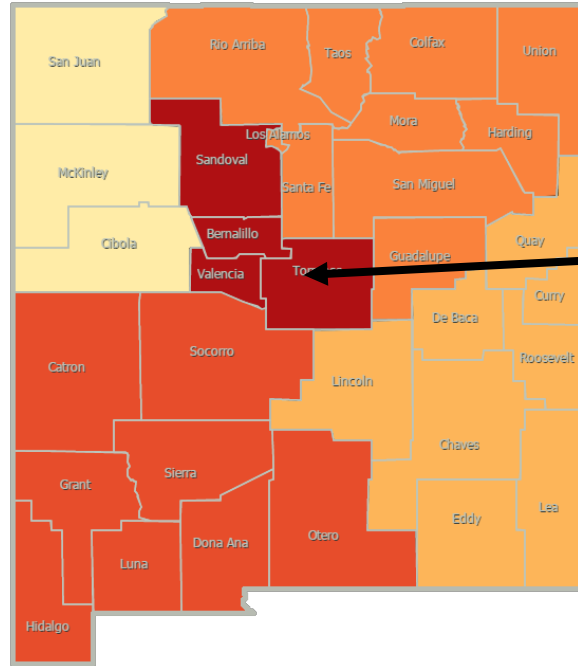
Northwest
R_effective 0.9 ↑

Northeast
R_effective 1.1 =

Metro
R_effective 1.1 ↓

Southwest
R_effective 1.1 ↓

Southeast
R_effective 1.0 ↓



As of July 7, 2020

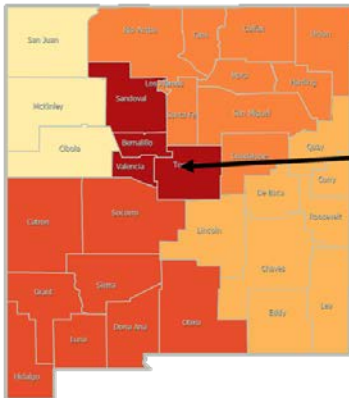
Northwest
R_effective 0.8 ↓

Northeast
R_effective 1.1 ↓

Metro
R_effective 1.3 ↓

Southwest
R_effective 1.4 ↑

Southeast
R_effective 1.3 ↓



Region	R-effective	95% Confidence Interval
State	1.1	[0.7, 1.5]
Metro	1.1	[0.5, 1.8]
Northeast	1.1	[0.0, 3.1]
Northwest	0.9	[0.0, 1.9]
Southeast	1.0	[0.0, 2.2]
Southwest	1.1	[0.4, 2.1]

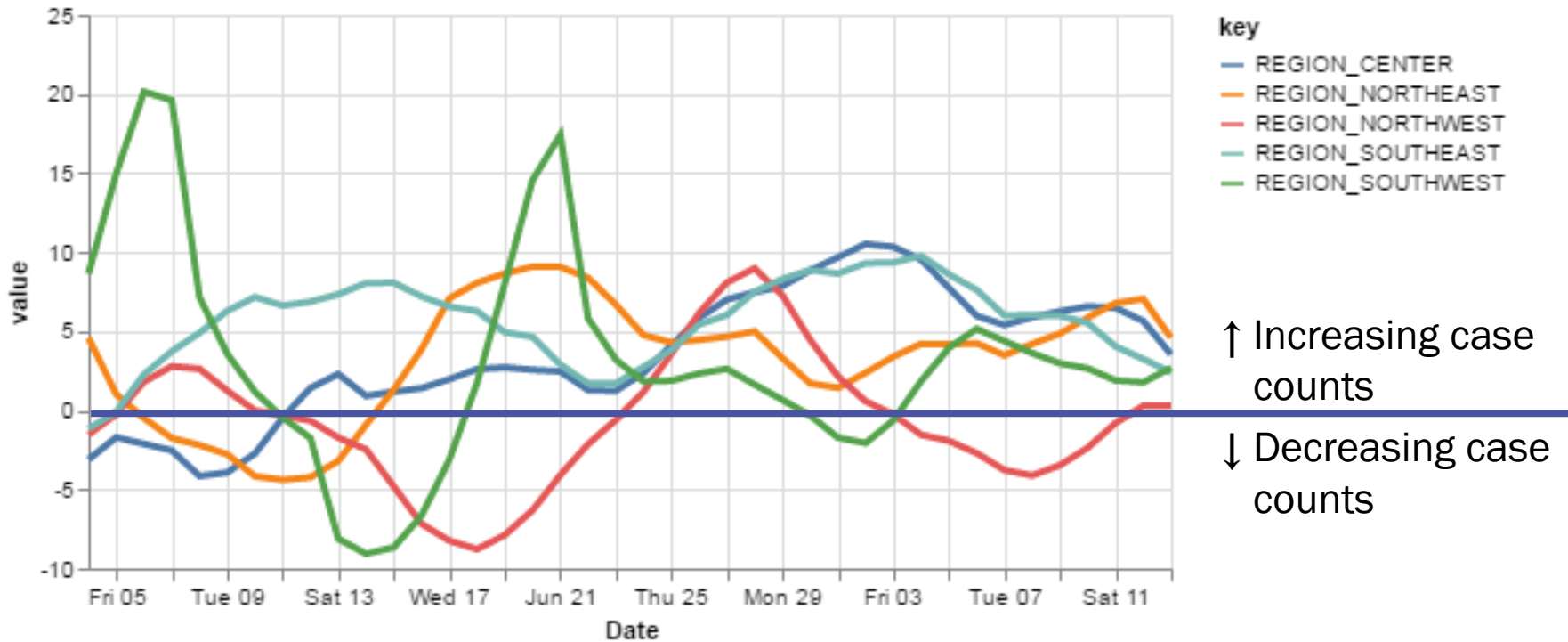
Courtesy of Presbyterian Healthcare Services – July 13, 2020.



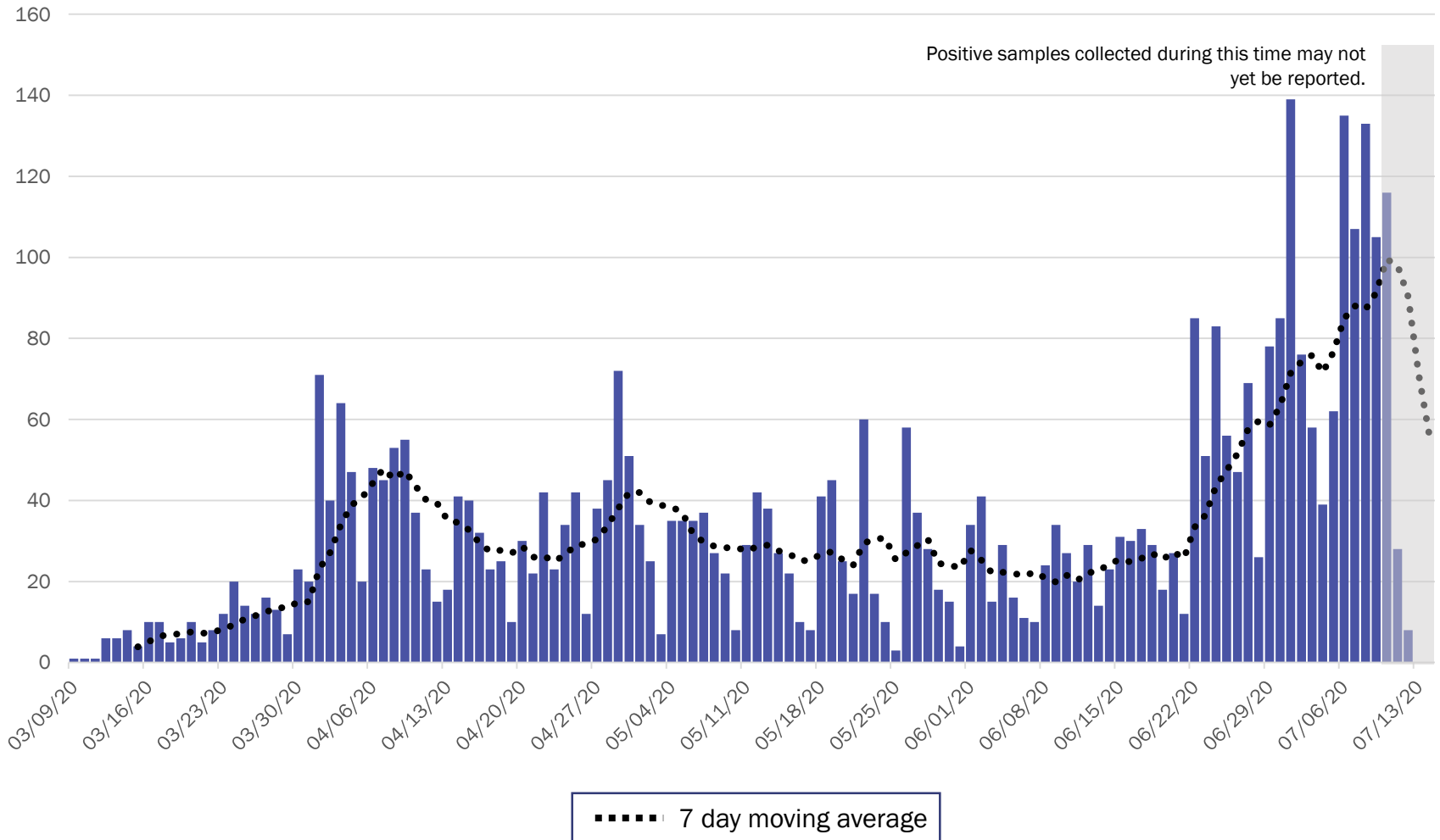
Investing for tomorrow, delivering today.

Northwest continues to have the lowest relative growth rate, but has been increasing.

14-day relative growth rate (%), Regions



Metro Region Case Count by Collection Date with 7 Day Moving Average – July 14, 2020

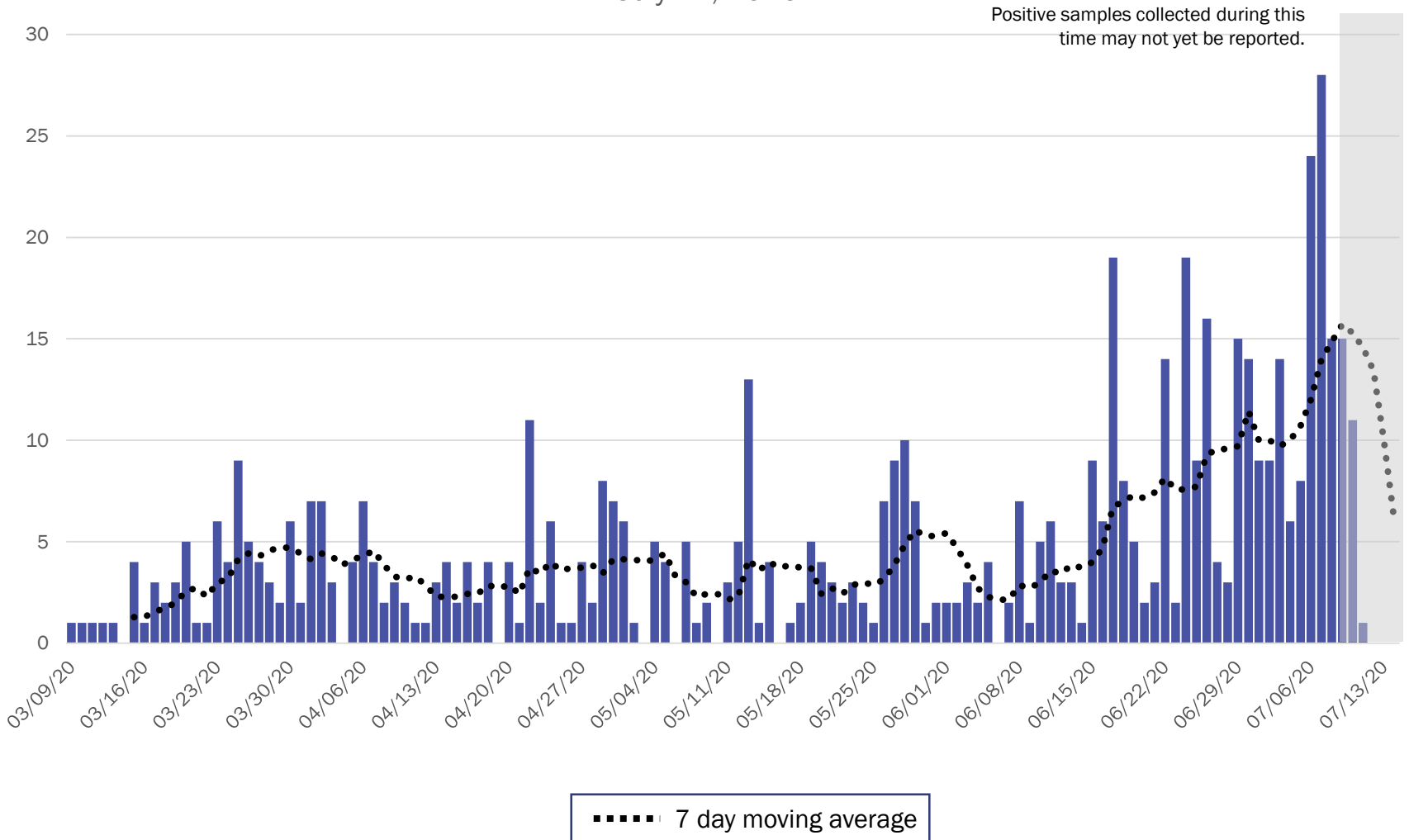


Source: Infectious Disease Epidemiology Bureau, Epidemiology and Response Division 7.14.2020, New Mexico Department of Health.



Investing for tomorrow, delivering today.

Northeast Region Case Count by Collection Date with 7 Day Moving Average July 14, 2020



Source: Infectious Disease Epidemiology Bureau, Epidemiology and Response Division 7.14.2020, New Mexico Department of Health.

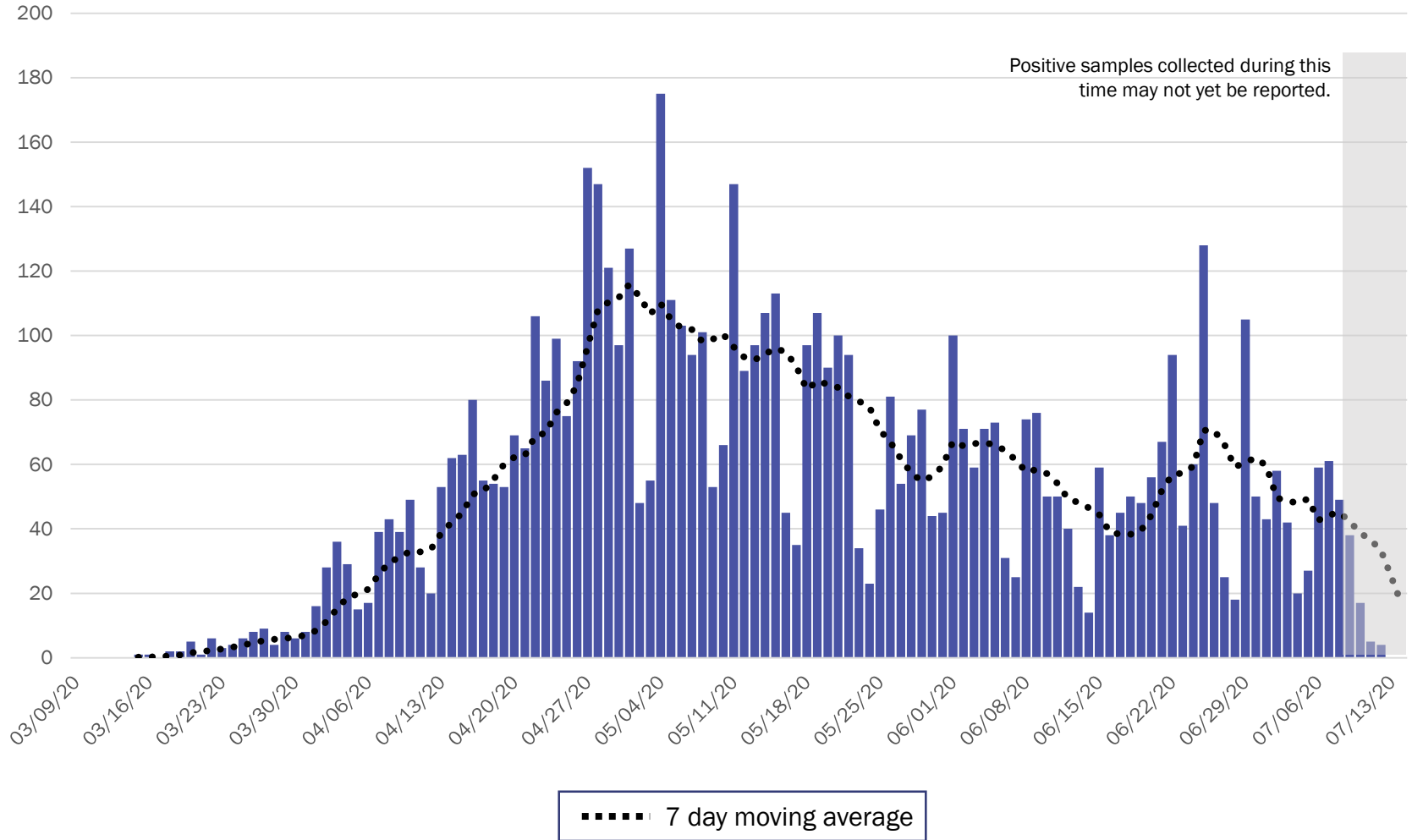


Investing for tomorrow, delivering today.

1190 S. St. Francis Drive • Santa Fe, NM 87505 • Phone: 505-827-2613 • Fax: 505-827-2530 • nmhealth.org

Northwest Region Case Count by Collection Date with 7 Day Moving Average

July 14, 2020



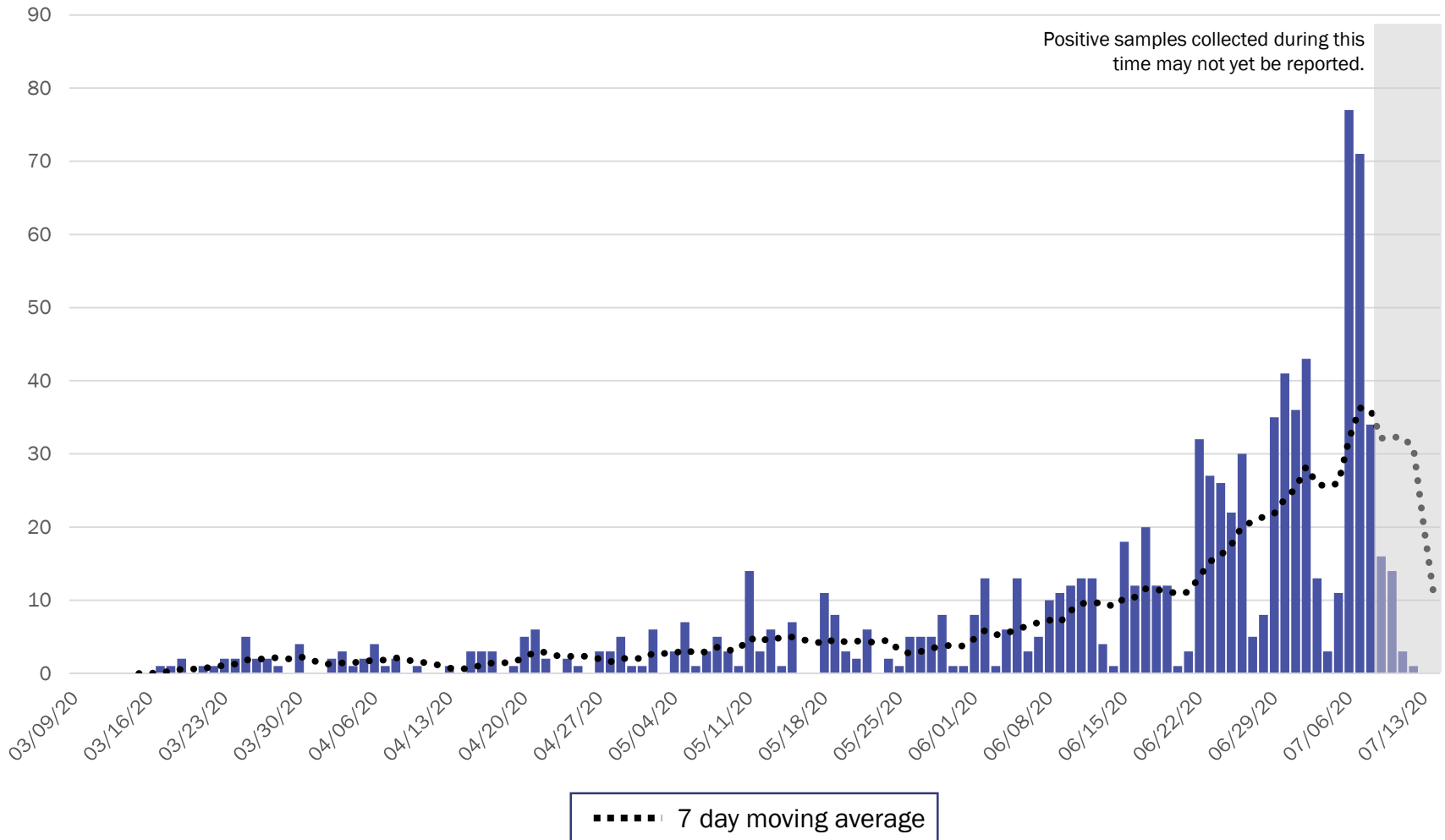
Source: Infectious Disease Epidemiology Bureau, Epidemiology and Response Division 7.14.2020, New Mexico Department of Health.



Investing for tomorrow, delivering today.

1190 S. St. Francis Drive • Santa Fe, NM 87505 • Phone: 505-827-2613 • Fax: 505-827-2530 • nmhealth.org

Southeast Region Case Count by Collection Date with 7 Day Moving Average July 14, 2020



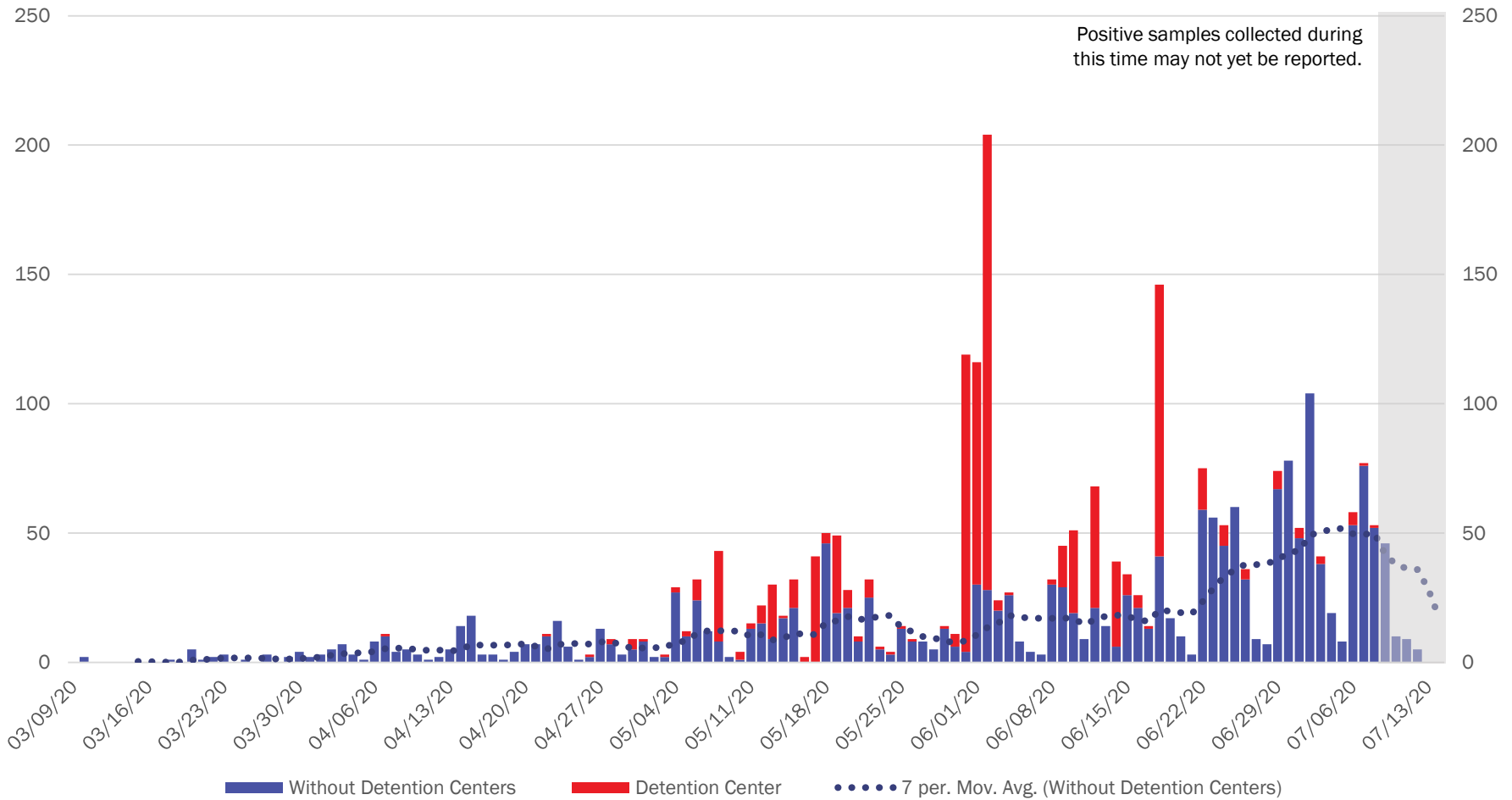
Source: Infectious Disease Epidemiology Bureau, Epidemiology and Response Division 7.14.2020, New Mexico Department of Health.



Investing for tomorrow, delivering today.

Southwest Region Case Count by Collection Date with 7 Day Moving Average

July 14, 2020



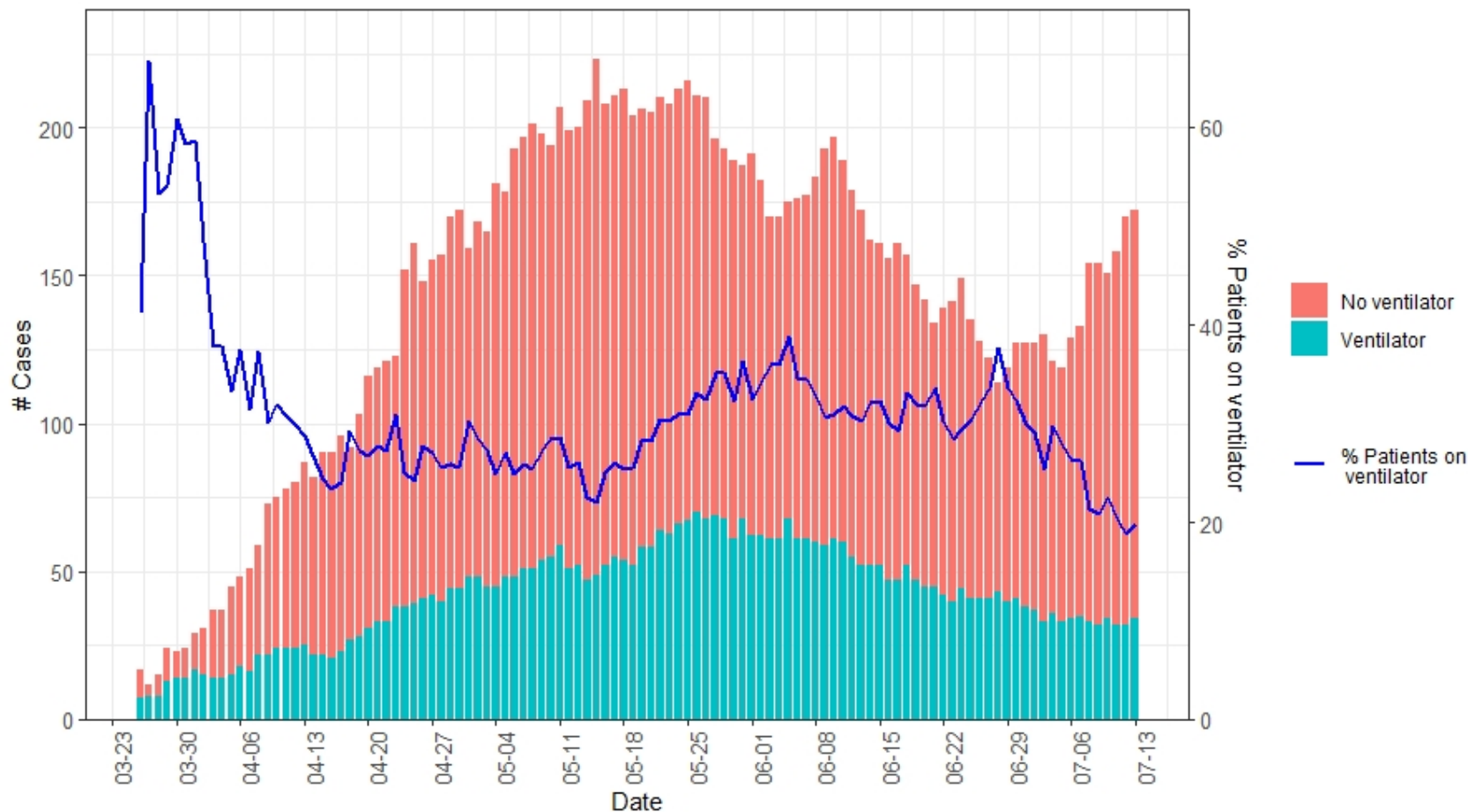
Source: Infectious Disease Epidemiology Bureau, Epidemiology and Response Division 7.14.2020, New Mexico Department of Health.



Investing for tomorrow, delivering today.

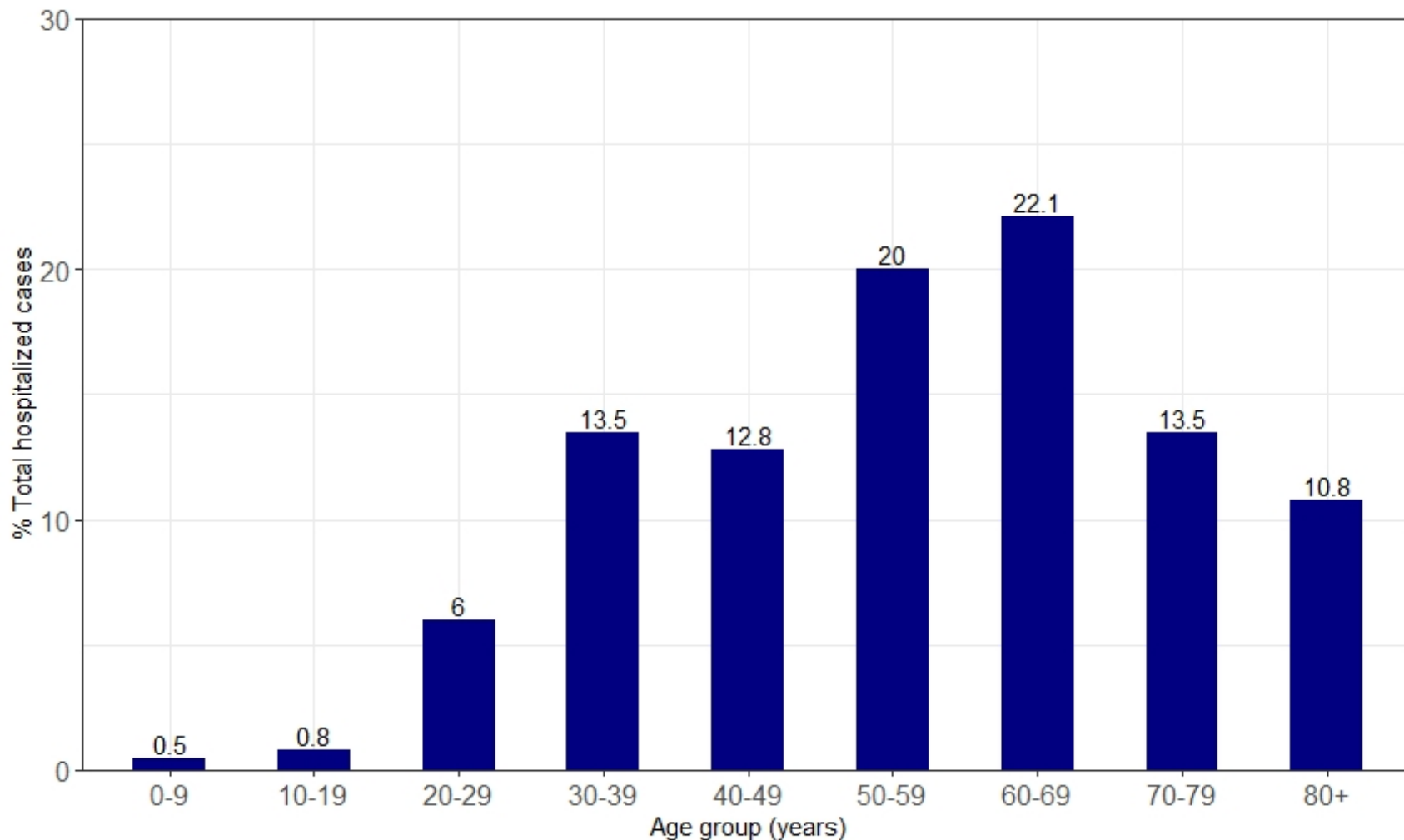
1190 S. St. Francis Drive • Santa Fe, NM 87505 • Phone: 505-827-2613 • Fax: 505-827-2530 • nmhealth.org

Hospitalizations have increased since early July. Ventilator use has decreased and is about 20% currently.



As of July 13, 2020

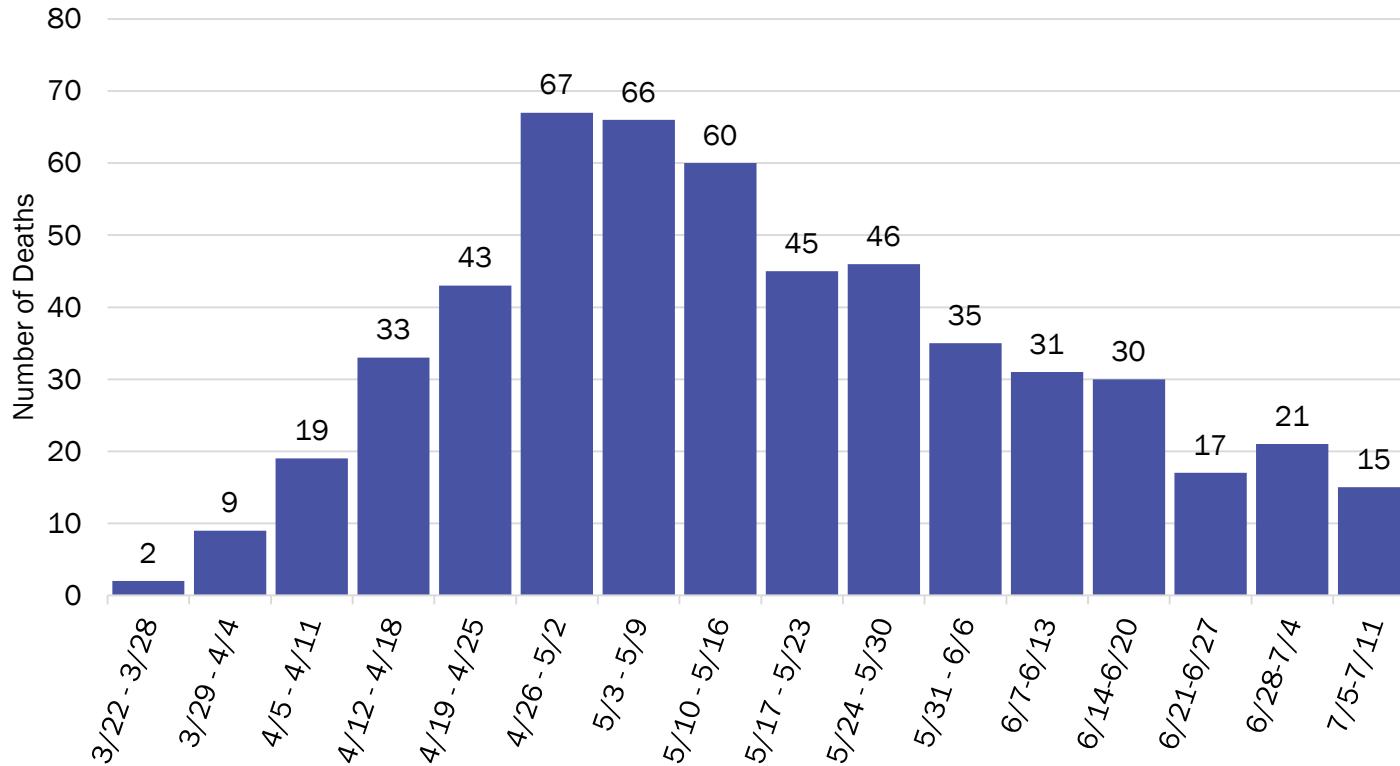
The 50-59 and 60-69 years old age groups each make up about 20% of the total hospitalized cases



As of July 13, 2020

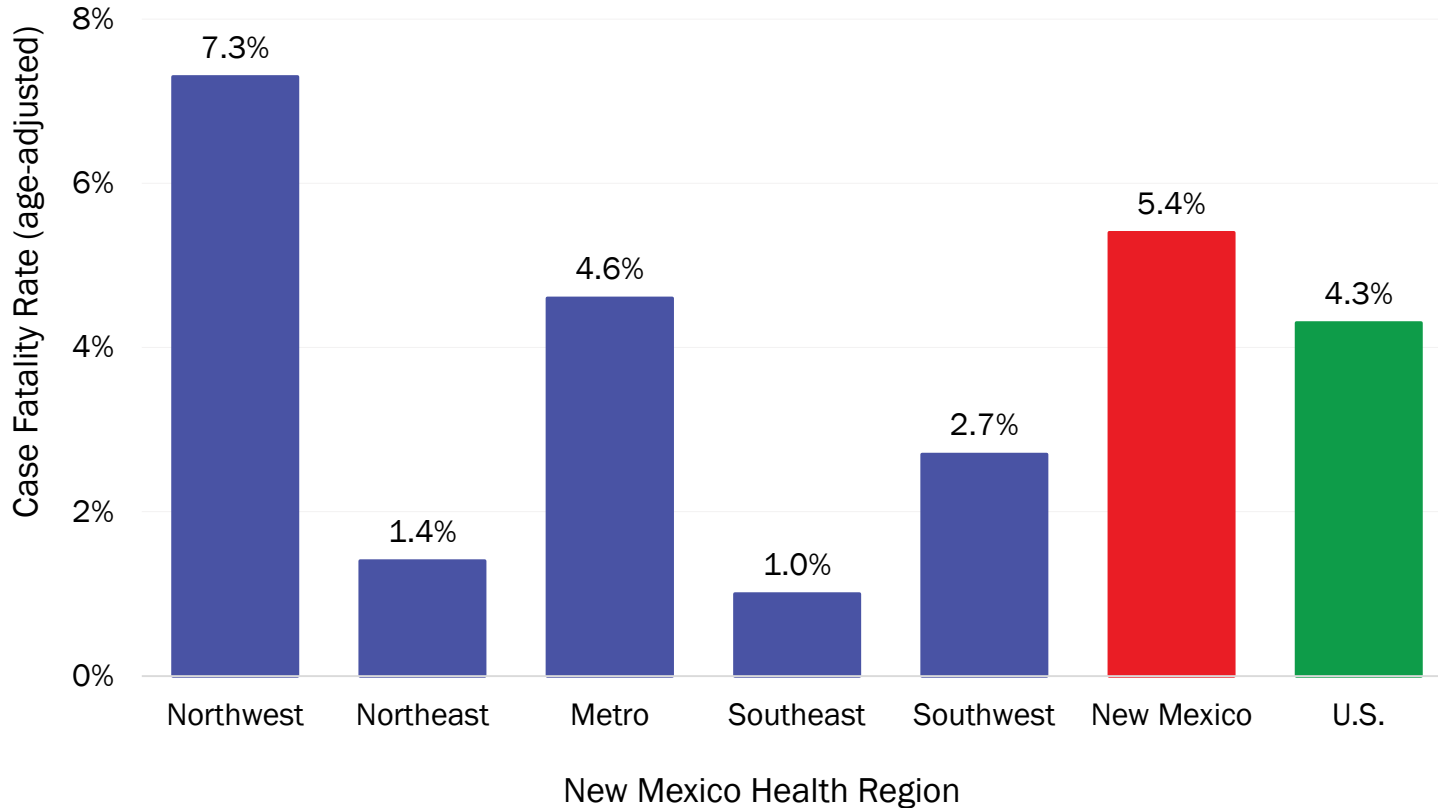
COVID-19 deaths have been decreasing since May, but the number of deaths may increase in the next few weeks due to the recent rise in case counts and hospitalizations

COVID-19 Deaths by Week of Death, New Mexico



Reporting through 7/10/2020

Case fatality rates (CFR) across regions have changed decreased slightly since last week



Rates have been age-adjusted to U.S. COVID-19 cases.

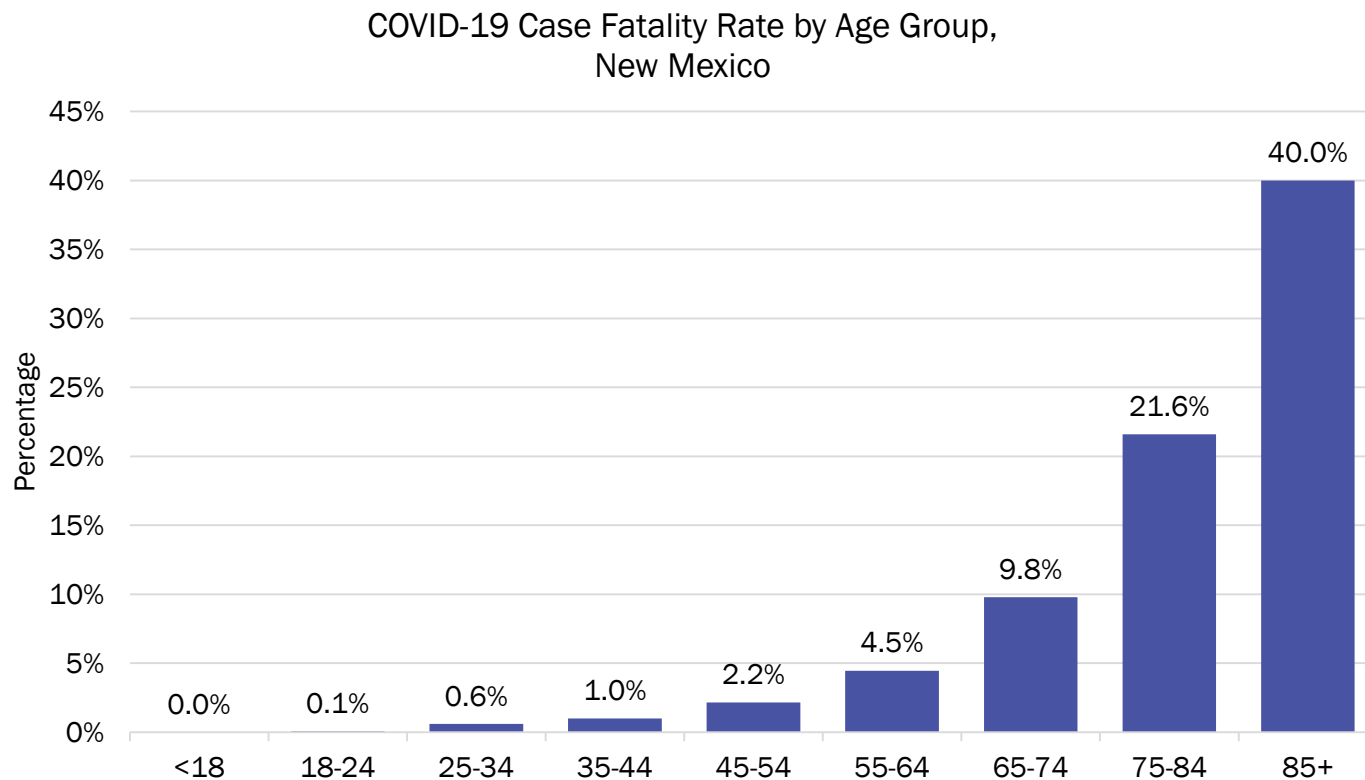
Source: Bureau of Vital Records and Health Statistics and Infectious Disease Epidemiology Bureau, Epidemiology and Response Division, reporting through 7.12.2020, New Mexico Department of Health.



Investing for tomorrow, delivering today.

1190 S. St. Francis Drive • Santa Fe, NM 87505 • Phone: 505-827-2613 • Fax: 505-827-2530 • nmhealth.org

As age increases, the case fatality rate also increases. Age groups 75-84 and 85+ continue to have the highest case fatality rates



Reporting through 7/10/2020

New Mexico Status Updates

- Case count: Statewide, daily case counts are increasing.
- Hospitalizations: After a period of decline, current hospitalizations have been increasing over the past week.
- Deaths: Deaths have been steadily declining since mid-May.
- Social distancing: Cell phone data suggests the rise in mobility of New Mexico residents may be slowing down.
- Contact tracing: The median time to quarantine for contacts identified last week was 3.5 days.

Supplementary Slides

Modeling Assumptions

Variable	Measured Value	Value as of 7.13.20
R_Effective	Actual Measured Daily Value by key county	R_eff=1.1
Positive Test Multiplier	Calculated by LANL	5.1
Hospitalization and Mortality	Actual rolling value / estimated number of total infected	Medical 0.3% ICU 0.2% Vent Rate 49% of ICU Crude Case Fatality Rate 5.1%
Length of Stay	Actual rolling value / estimated number of total infected	Medical 5 days ICU 14 days ICU on Vent 14 days