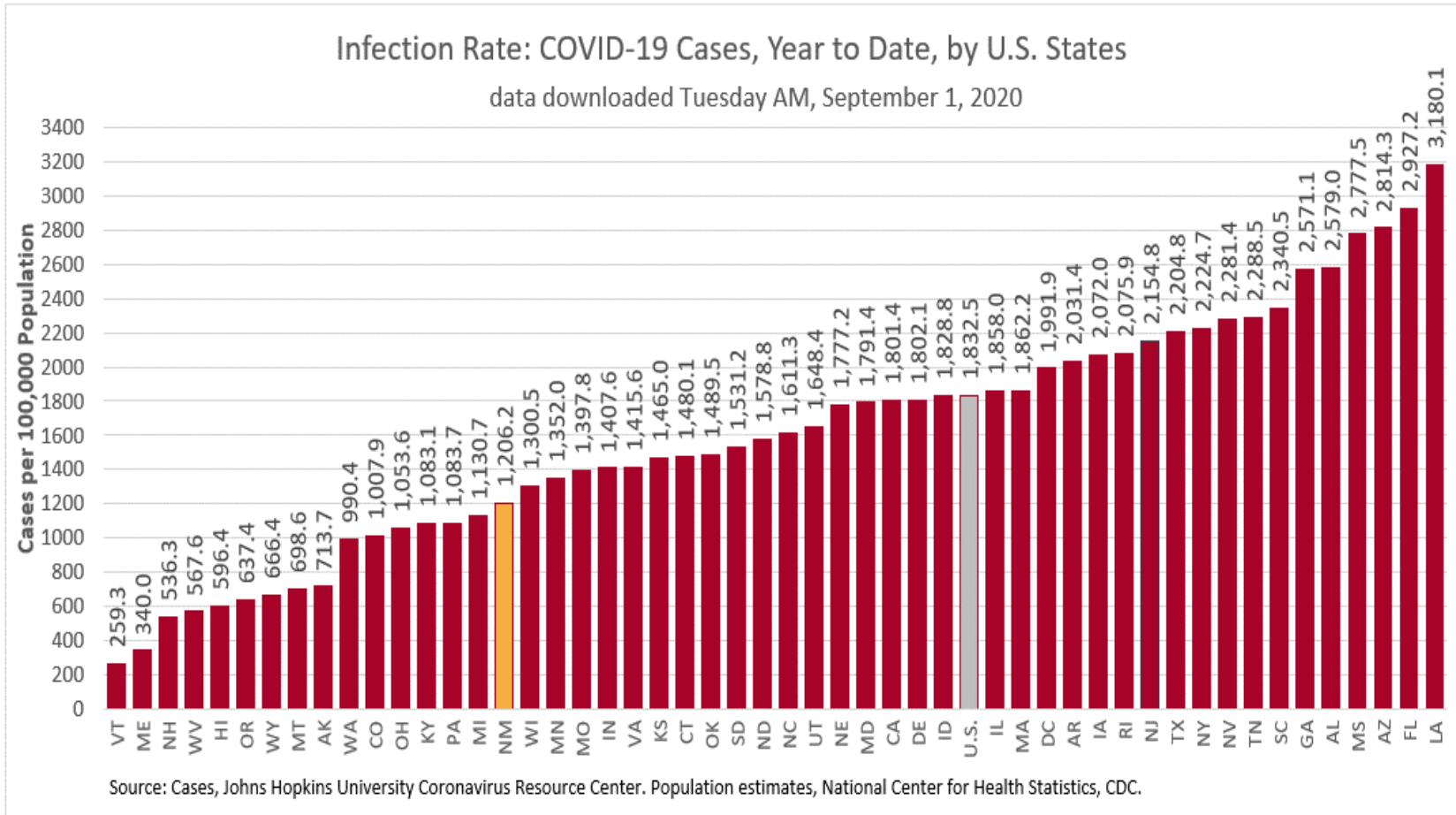


COVID-19 in New Mexico: Epidemiologic and Modeling Update

September 1, 2020

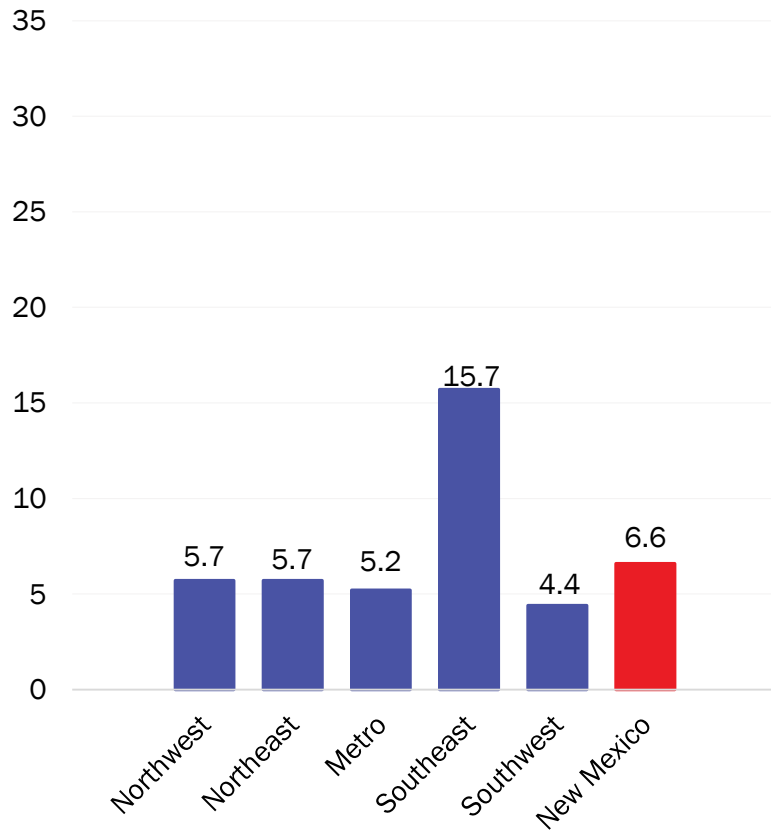
New Mexico has the 36th highest number of cases per 100,000 population in the United States



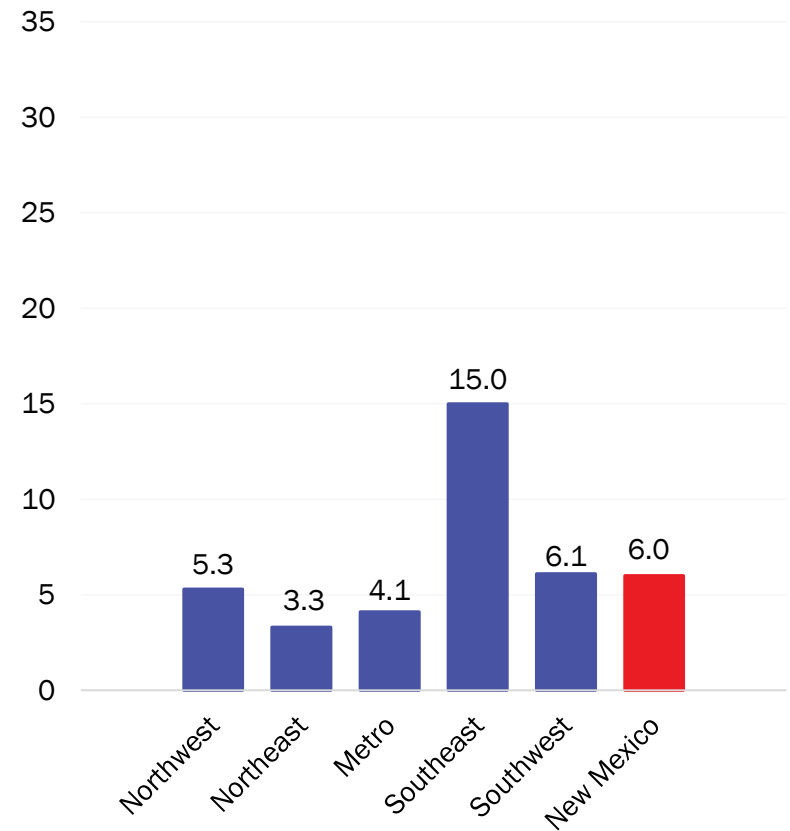
COVID-19 prevalence per 100,000 population

*Excludes cases among inmates in state and federal corrections and detention centers

New cases (Last 7 days) – August 23



New cases (Last 7 days) – August 30

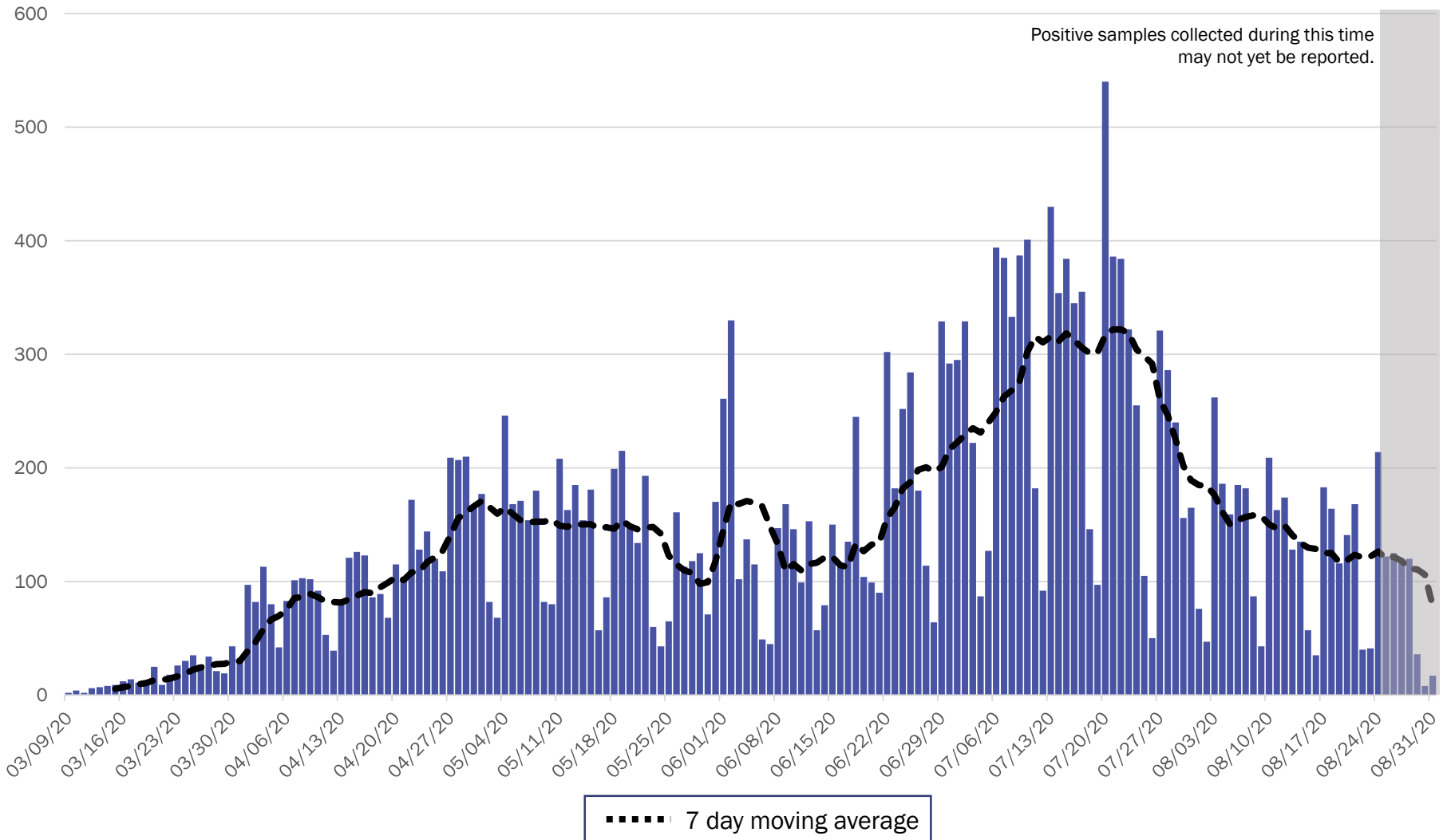


Source: Infectious Disease Epidemiology Bureau, Epidemiology and Response Division 8.31.2020, New Mexico Department of Health. Population estimates, UNM Geospatial and Population Studies Program.



Investing for tomorrow, delivering today.

New Mexico COVID-19 Cases by Date of Specimen Collection – September 1, 2020



Source: Infectious Disease Epidemiology Bureau, Epidemiology and Response Division 9.1.2020, New Mexico Department of Health.

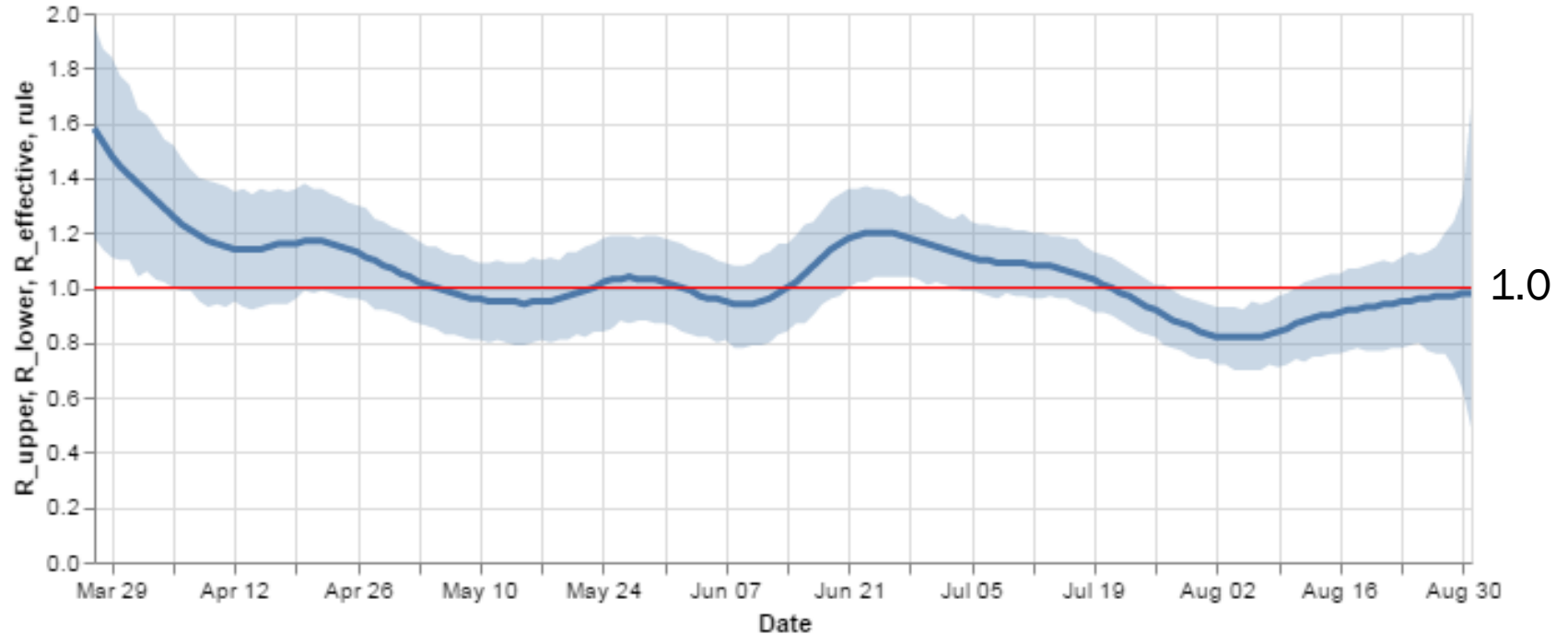


Investing for tomorrow, delivering today.

1190 S. St. Francis Drive • Santa Fe, NM 87505 • Phone: 505-827-2613 • Fax: 505-827-2530 • nmhealth.org

Statewide R-effective has remained at 1.0 since last week.

R_effective over time, STATE



Courtesy of Presbyterian Healthcare Services – September 1, 2020.

Key

- Low Level Endemic <1.0
- Approaching Low Level Endemic 1.0-1.05
- Requiring further mitigation >1.05

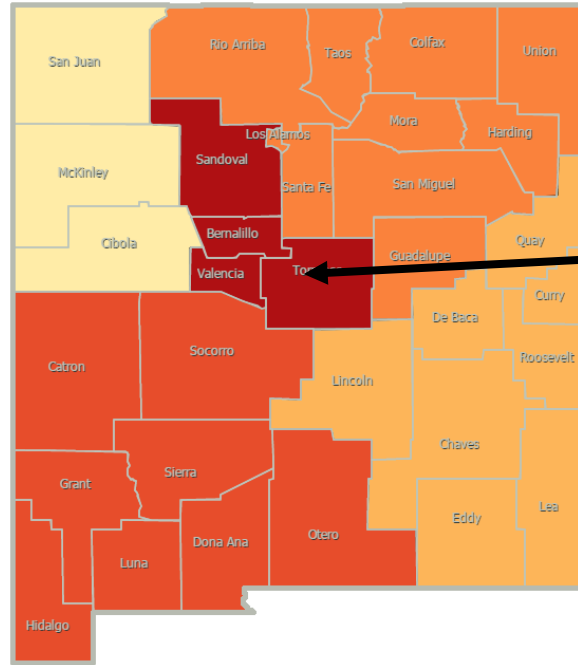
Northwest
R_effective 1.1 =

Northeast
R_effective 0.9 ↓

Metro
R_effective 1.0 ↓

Southwest
R_effective 1.0 ↑

Southeast
R_effective 0.9 =



As of August 23, 2020

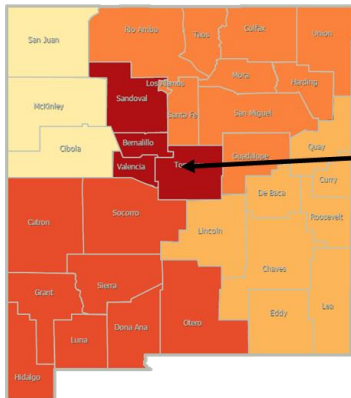
Northwest
R_effective 1.1 ↑

Northeast
R_effective 1.3 ↑

Metro
R_effective 1.2 ↑

Southwest
R_effective 0.6 ↓

Southeast
R_effective 0.9 ↓



| Region | R-effective | 95% Confidence Interval |
|-----------|-------------|-------------------------|
| State | 1.0 | [0.5, 1.7] |
| Metro | 1.0 | [0.0, 2.2] |
| Northeast | 0.9 | [0.0, 3.6] |
| Northwest | 1.1 | [0.0, 2.5] |
| Southeast | 0.9 | [0.0, 2.1] |
| Southwest | 1.0 | [0.0, 2.4] |

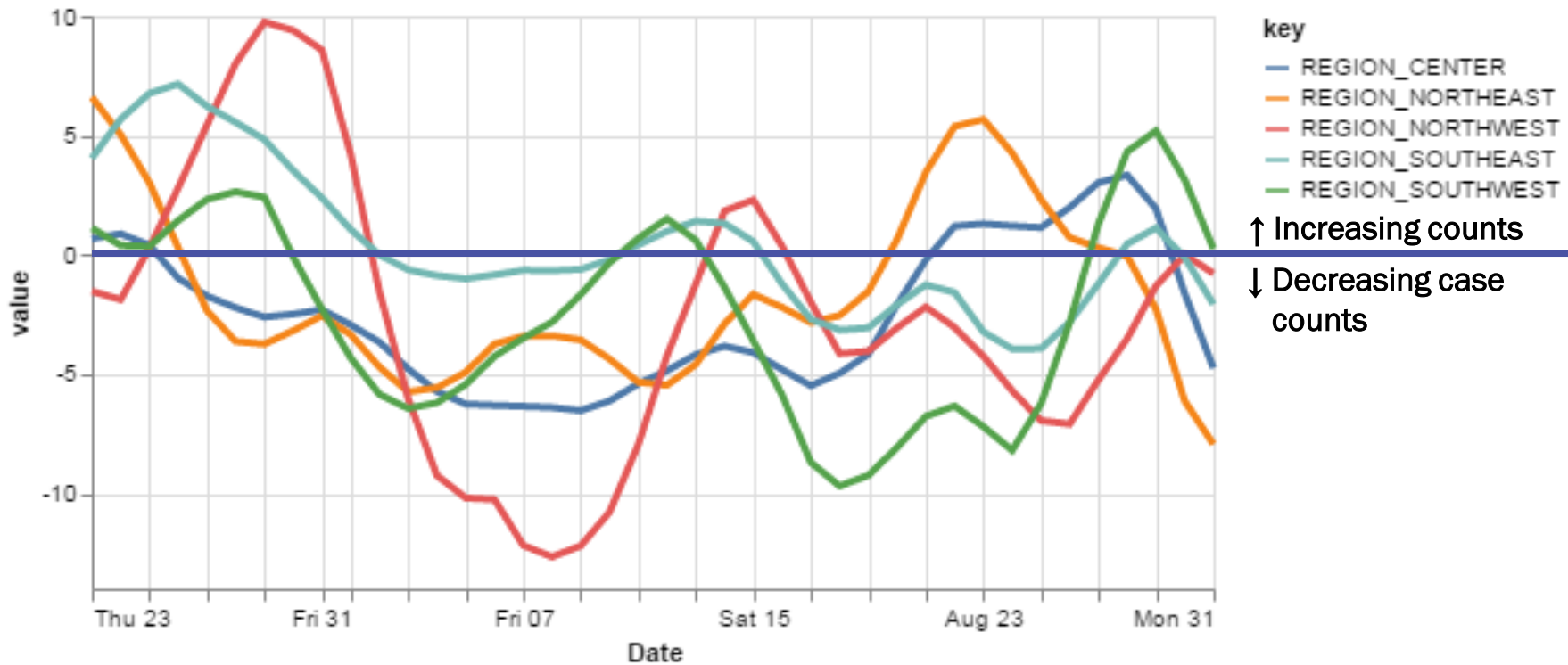
Courtesy of Presbyterian Healthcare Services – September 1, 2020.



Investing for tomorrow, delivering today.

The Southwest is the only region with a positive growth rate.

14-day relative growth rate (%), Regions



key

- REGION_CENTER
- REGION_NORTHEAST
- REGION_NORTHWEST
- REGION_SOUTHEAST
- REGION_SOUTHWEST

↑ Increasing counts
↓ Decreasing case counts

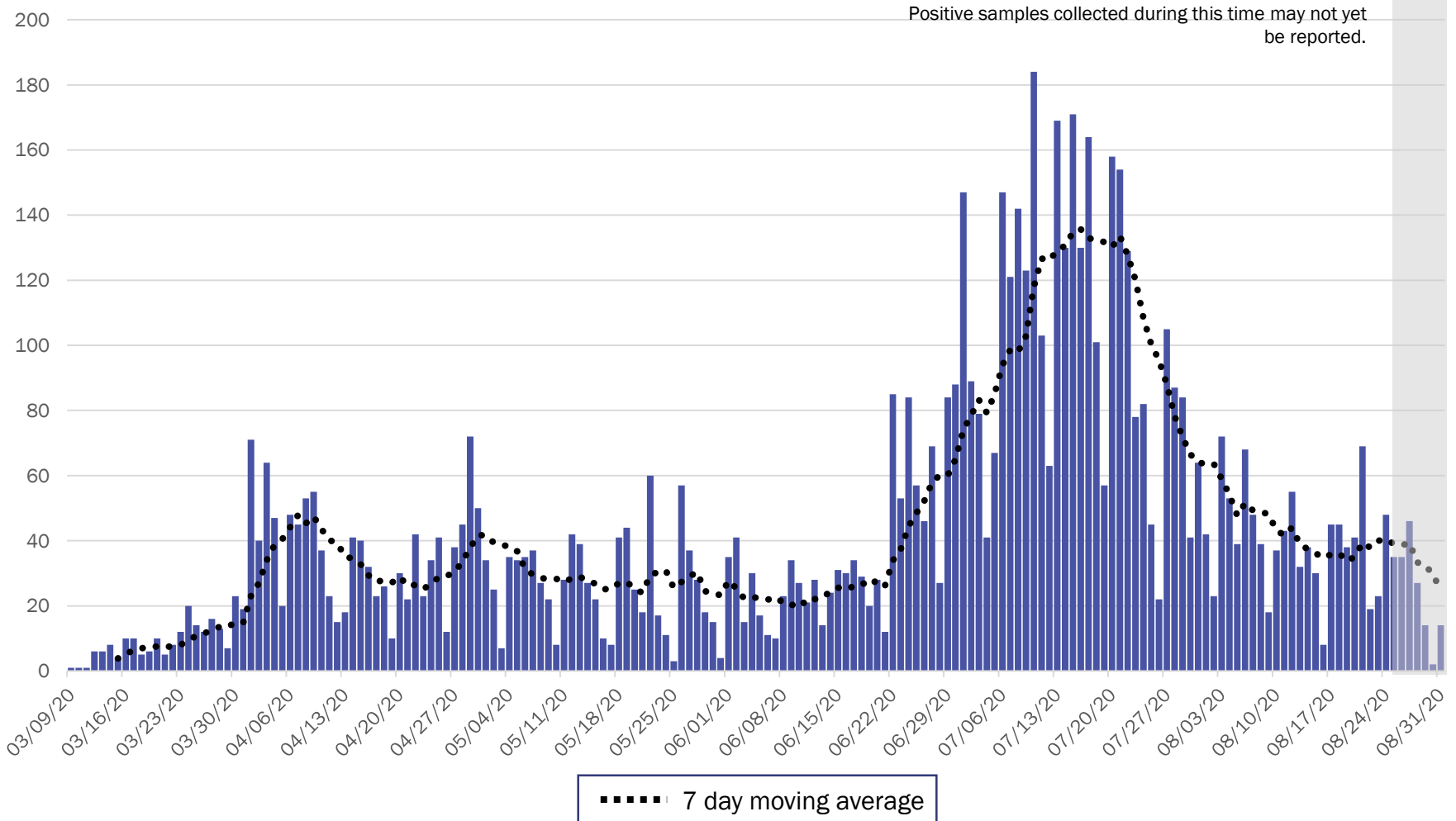
Courtesy of Presbyterian Healthcare Services – September 1, 2020.



Investing for tomorrow, delivering today.

1190 S. St. Francis Drive • Santa Fe, NM 87505 • Phone: 505-827-2613 • Fax: 505-827-2530 • nmhealth.org

Metro Region Case Count by Collection Date with 7 Day Moving Average September 1, 2020



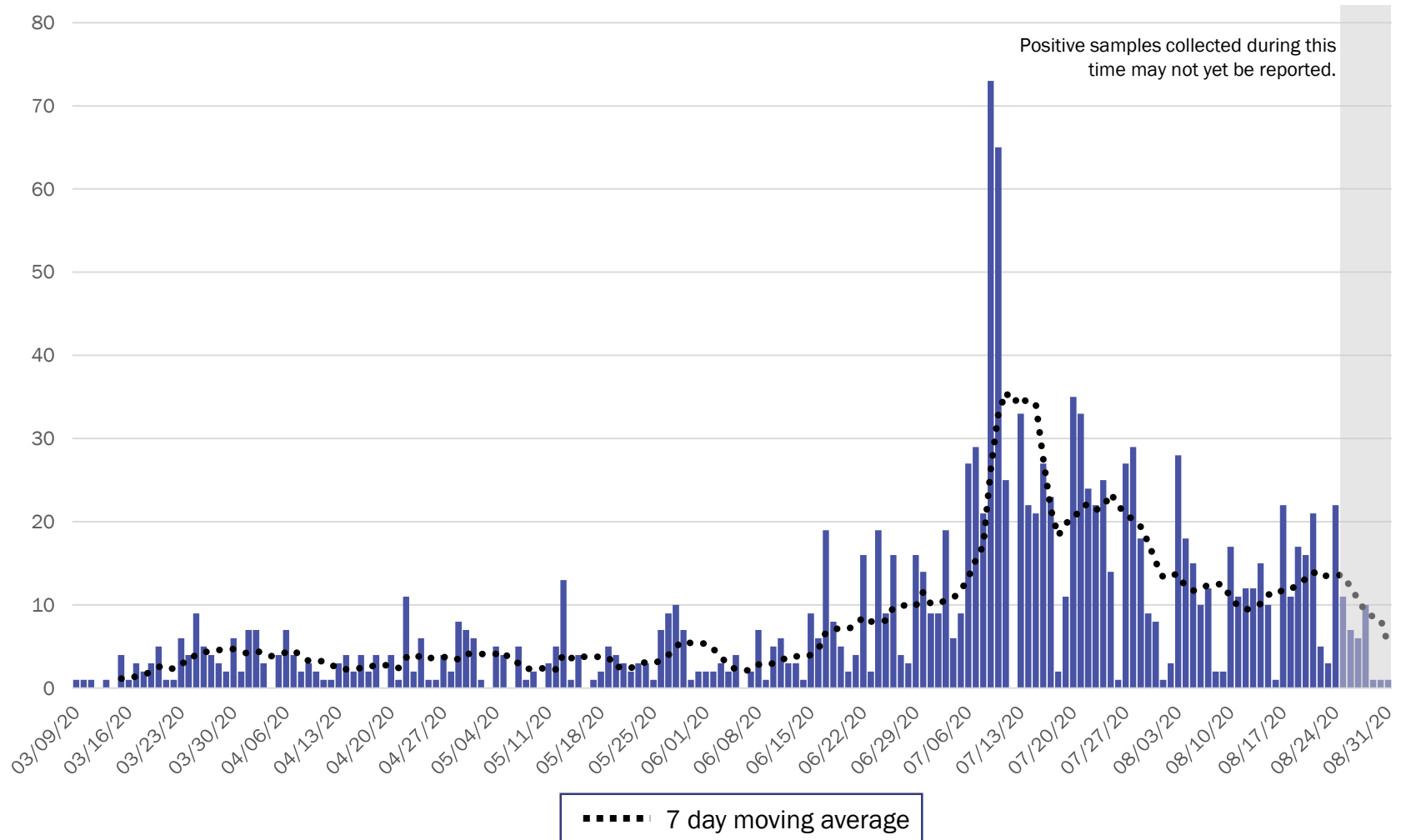
Source: Infectious Disease Epidemiology Bureau, Epidemiology and Response Division 9.1.2020, New Mexico Department of Health.



Investing for tomorrow, delivering today.

1190 S. St. Francis Drive • Santa Fe, NM 87505 • Phone: 505-827-2613 • Fax: 505-827-2530 • nmhealth.org

Northeast Region Case Count by Collection Date with 7 Day Moving Average September 1, 2020



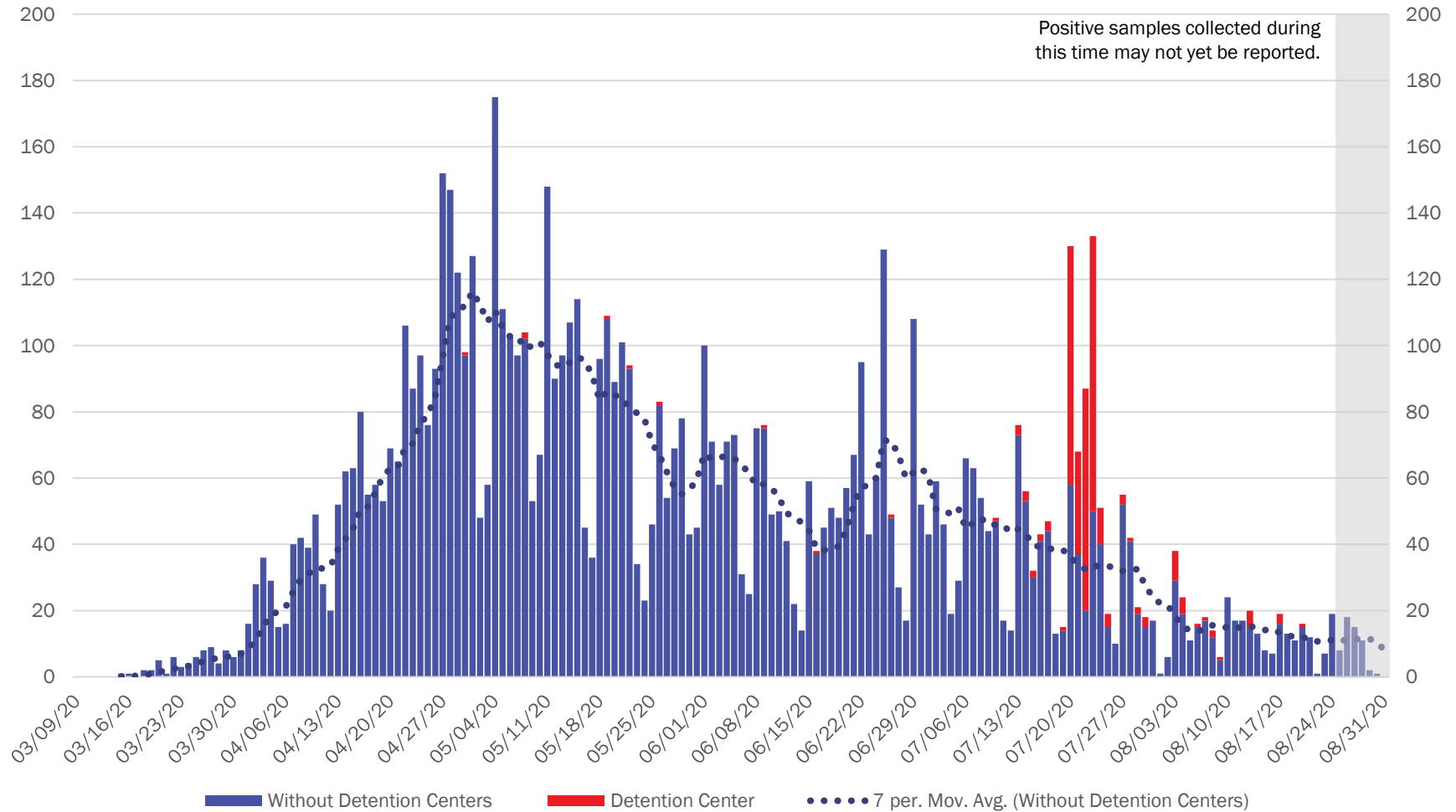
Source: Infectious Disease Epidemiology Bureau, Epidemiology and Response Division 9.1.2020, New Mexico Department of Health.



Investing for tomorrow, delivering today.

1190 S. St. Francis Drive • Santa Fe, NM 87505 • Phone: 505-827-2613 • Fax: 505-827-2530 • nmhealth.org

Northwest Region Case Count by Collection Date with 7 Day Moving Average September 1, 2020



Source: Infectious Disease Epidemiology Bureau, Epidemiology and Response Division 9.1.2020, New Mexico Department of Health.

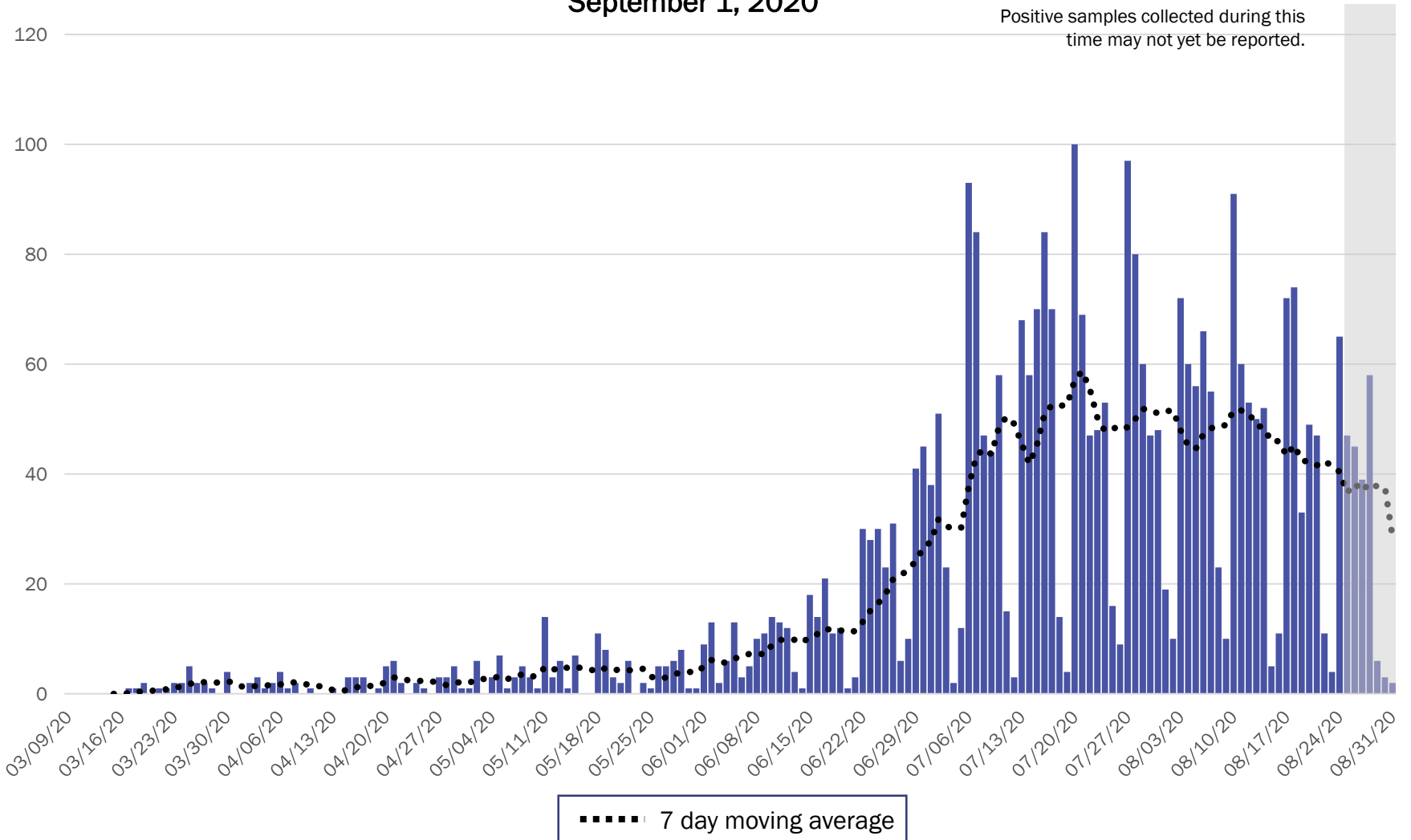


Investing for tomorrow, delivering today.

1190 S. St. Francis Drive • Santa Fe, NM 87505 • Phone: 505-827-2613 • Fax: 505-827-2530 • nmhealth.org

Southeast Region Case Count by Collection Date with 7 Day Moving Average

September 1, 2020



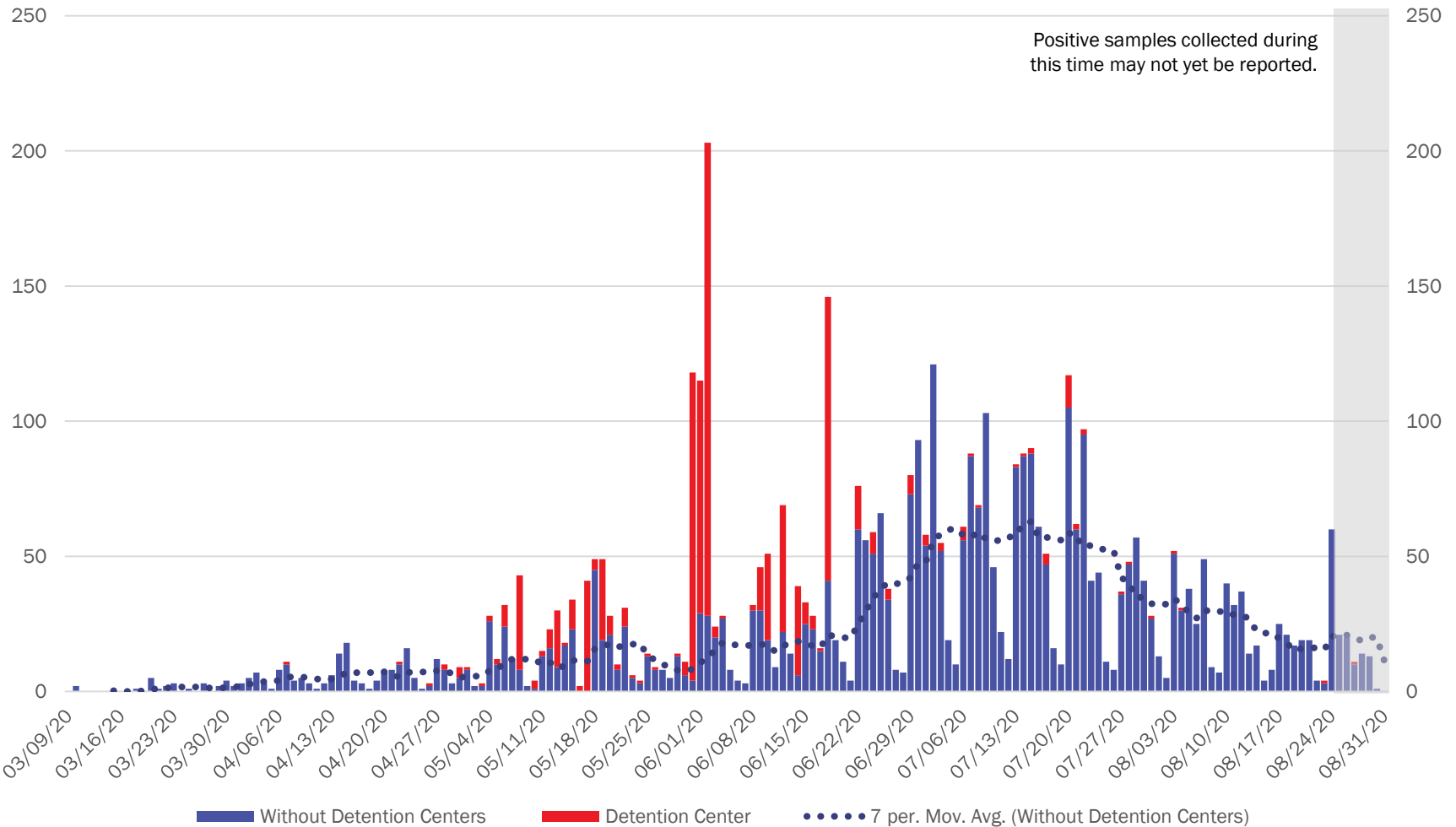
Source: Infectious Disease Epidemiology Bureau, Epidemiology and Response Division 9.1.2020, New Mexico Department of Health.



Investing for tomorrow, delivering today.

1190 S. St. Francis Drive • Santa Fe, NM 87505 • Phone: 505-827-2613 • Fax: 505-827-2530 • nmhealth.org

Southwest Region Case Count by Collection Date with 7 Day Moving Average September 1, 2020



Source: Infectious Disease Epidemiology Bureau, Epidemiology and Response Division 9.1.2020, New Mexico Department of Health.

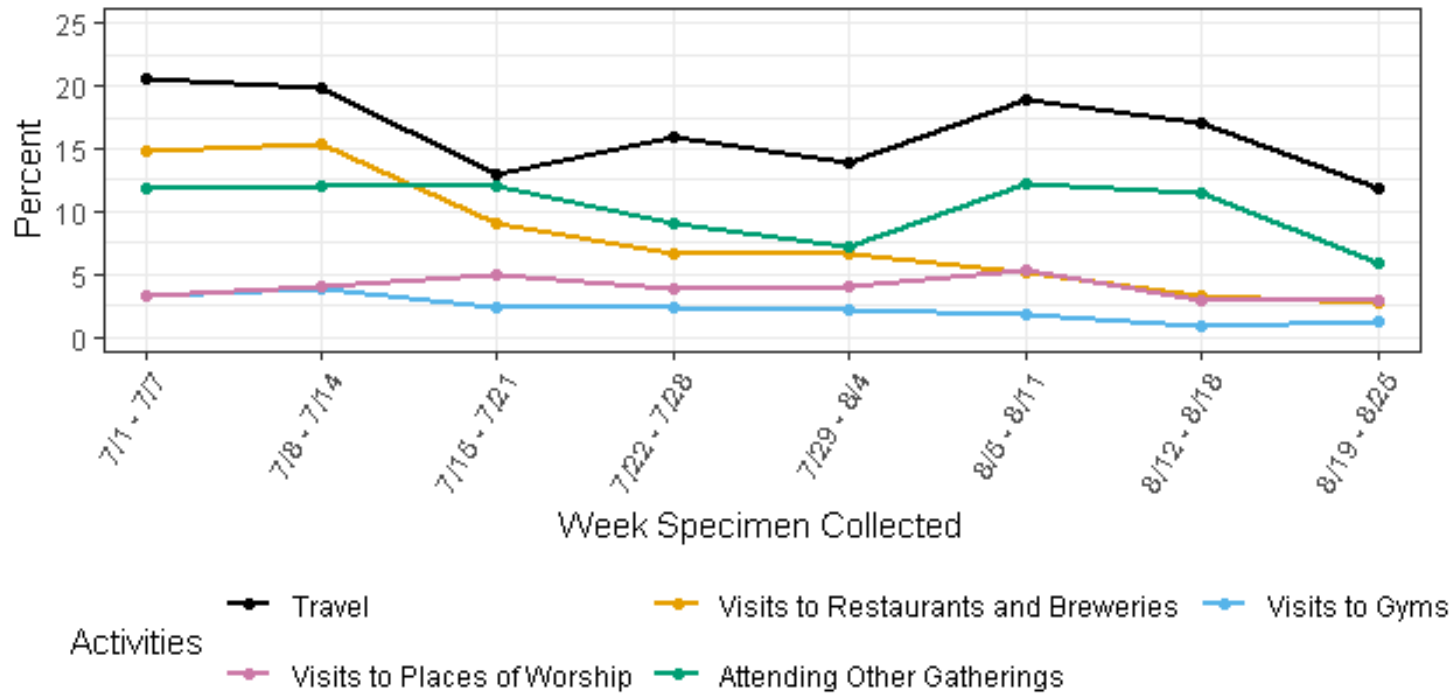


Investing for tomorrow, delivering today.

1190 S. St. Francis Drive • Santa Fe, NM 87505 • Phone: 505-827-2613 • Fax: 505-827-2530 • nmhealth.org

Travel and attendance at gatherings decreased last week, but may change with the new policies in the 8/28 Public Health Order

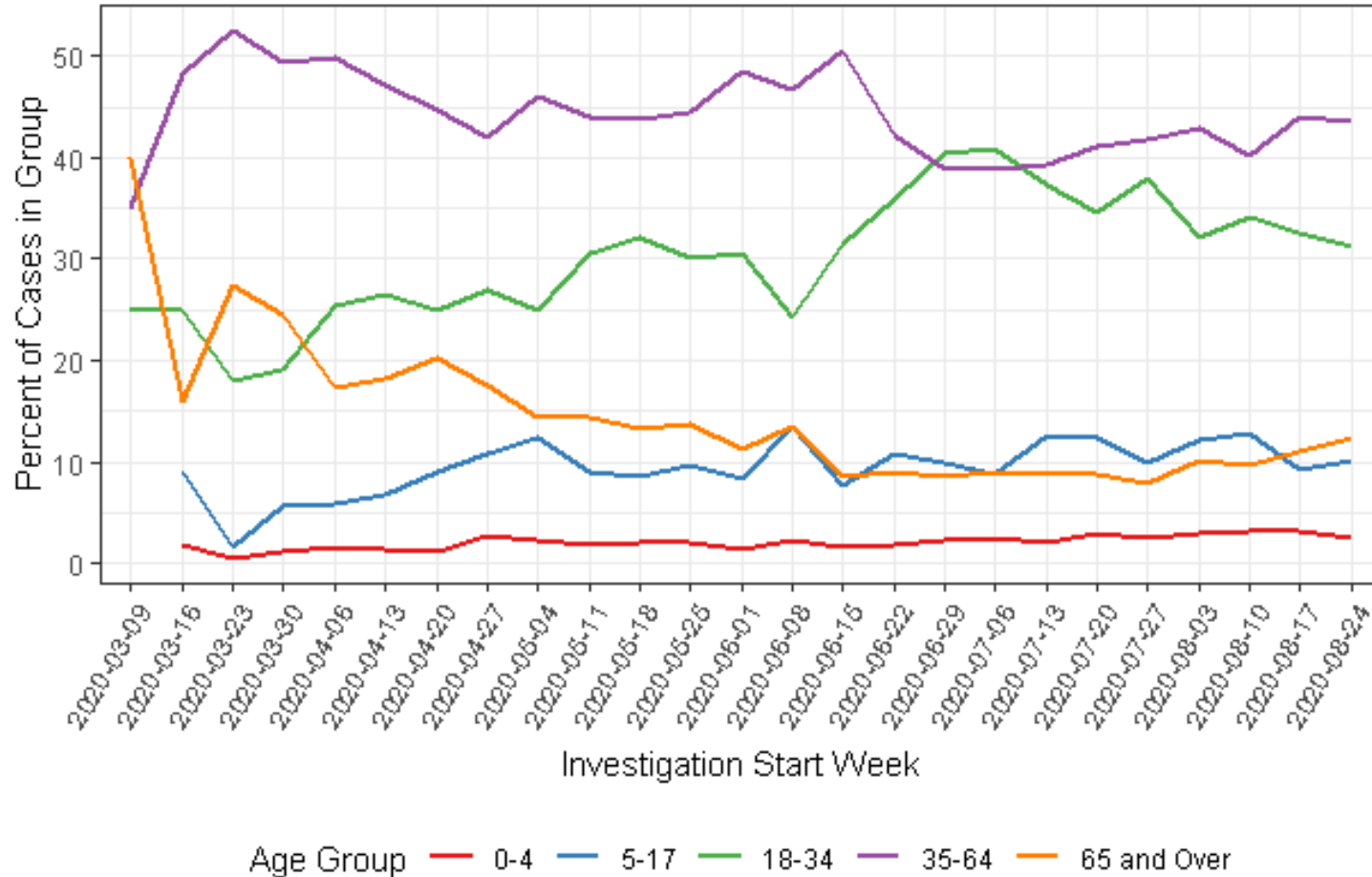
Percent of Investigated Cases Reporting Activities



Excludes Out-of-State Cases, Cases in Correctional Facilities, and Cases in Long-Term Care Facilities

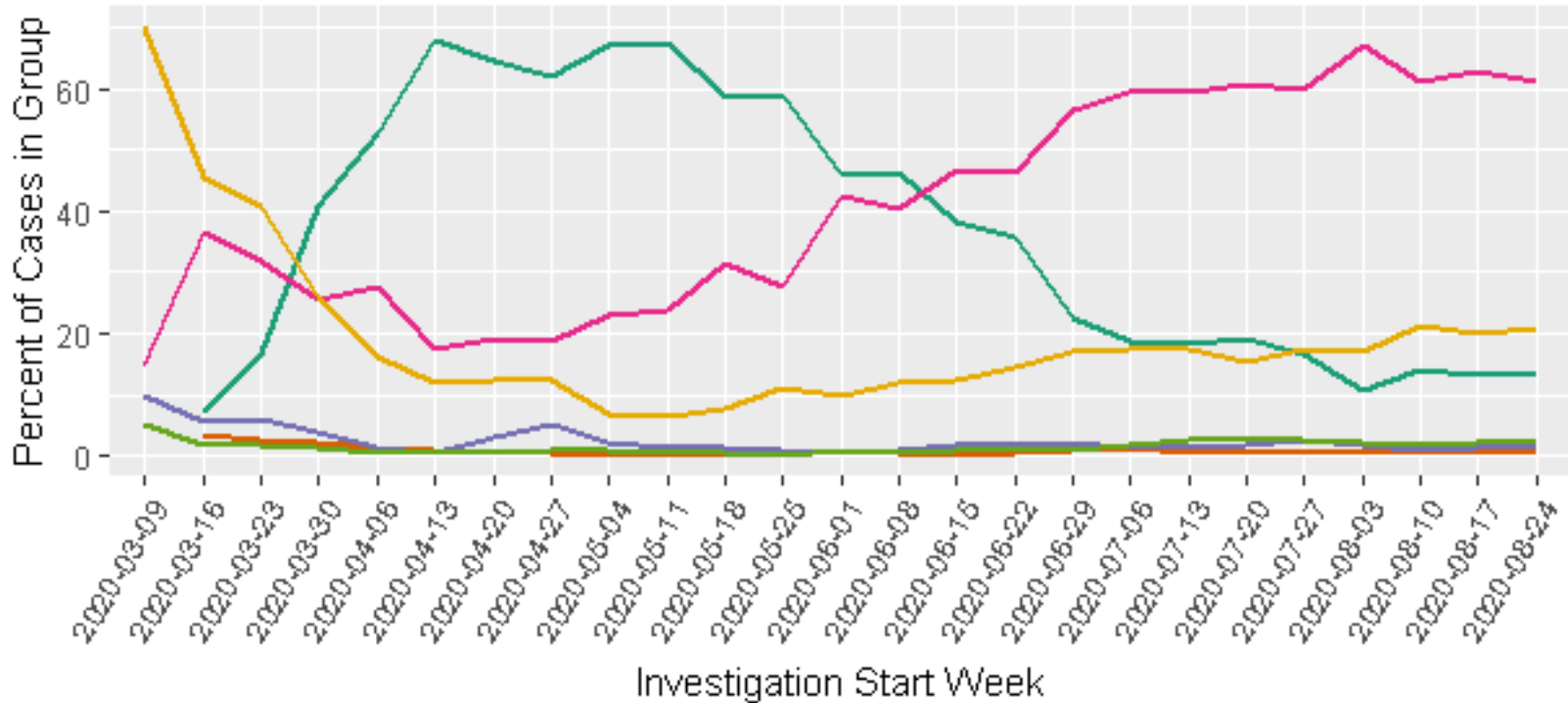
As of August 31, 2020

The 18-34 and 35-64 year old age groups make up the highest percentage of cases each week.



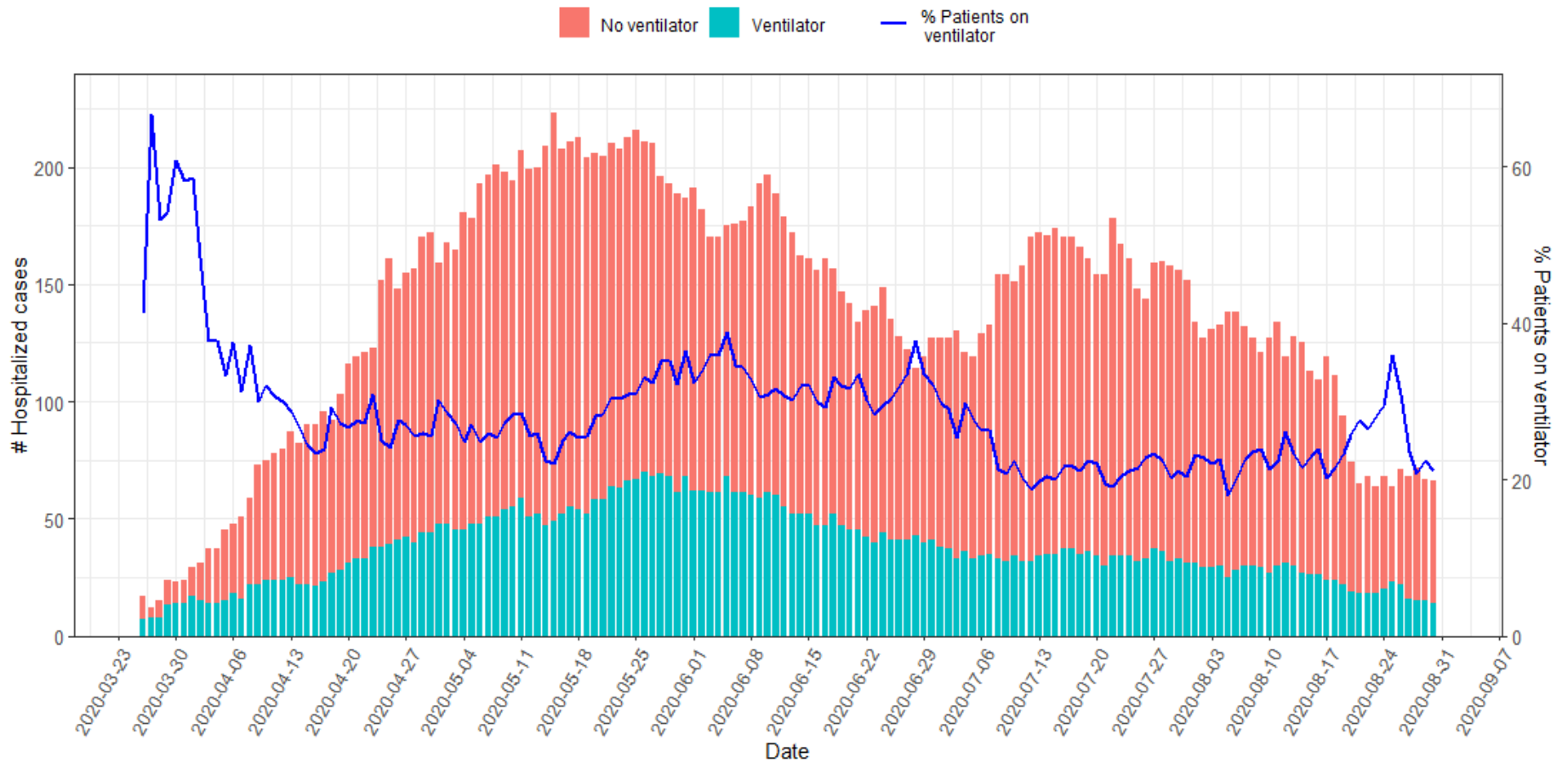
As of August 31, 2020

Hispanic or Latino cases have steadily increased and made up ~60% of cases last week followed by White and American Indian or Alaska Native cases.



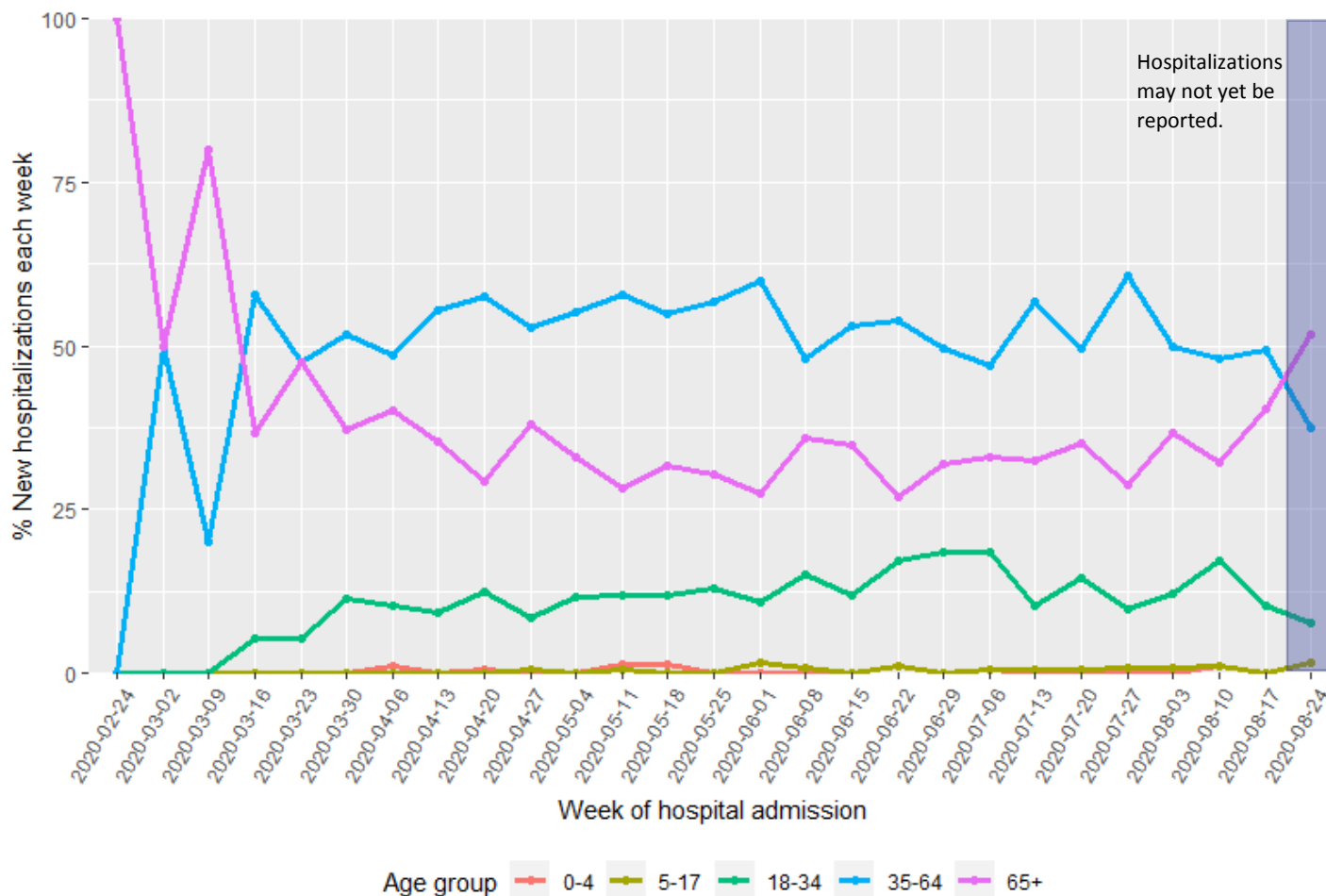
As of August 31, 2020

Hospitalizations have declined to <100 for the last 2 weeks.



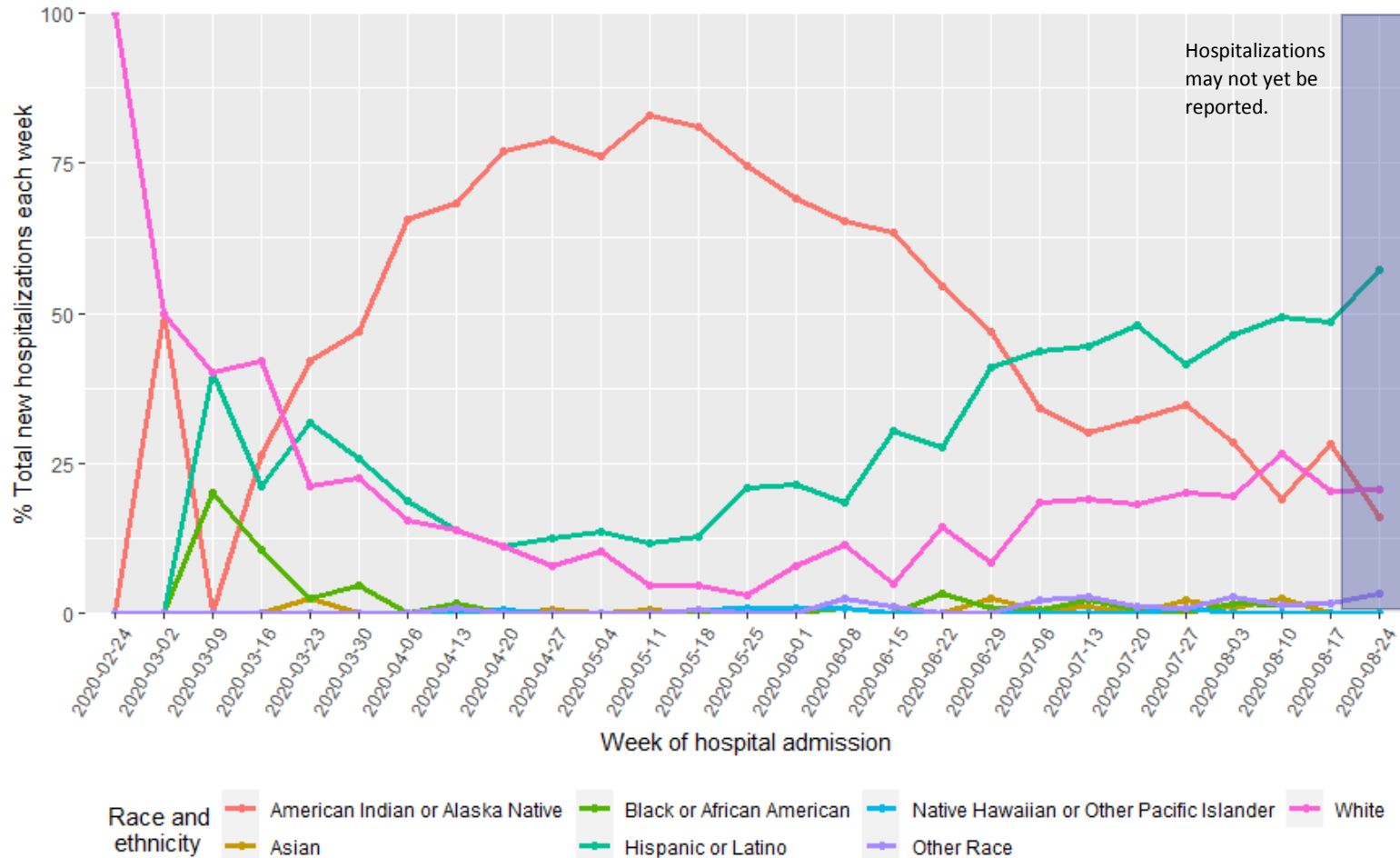
As of August 31, 2020

Hospitalizations of patients 65 years and older may be on the rise, while the 18-34 and 35-64 year old groups appear to be declining.



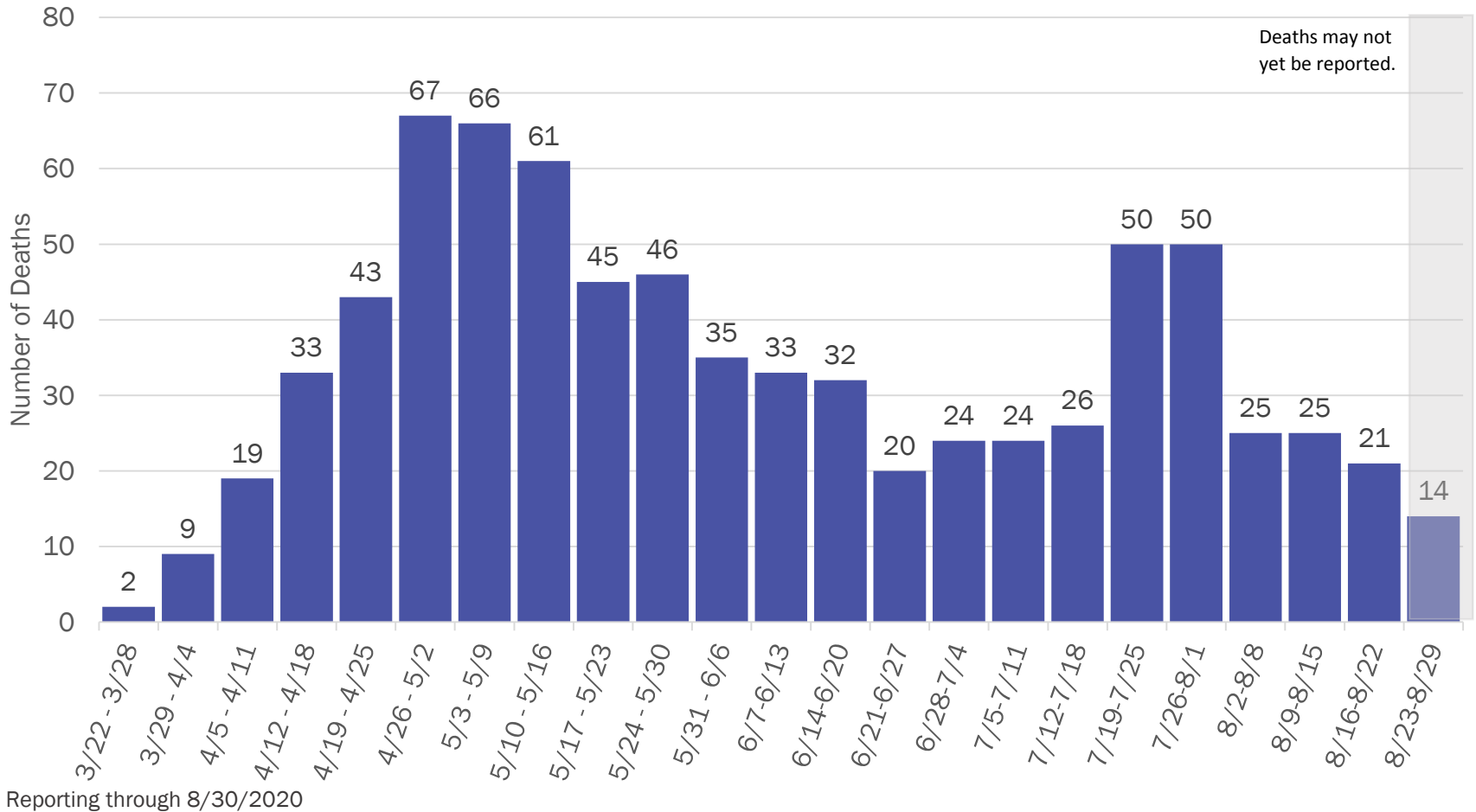
As of August 31, 2020

Hospitalizations of Hispanic or Latinos each week continues to increase, while American Indian or Alaska Natives and Whites decrease.



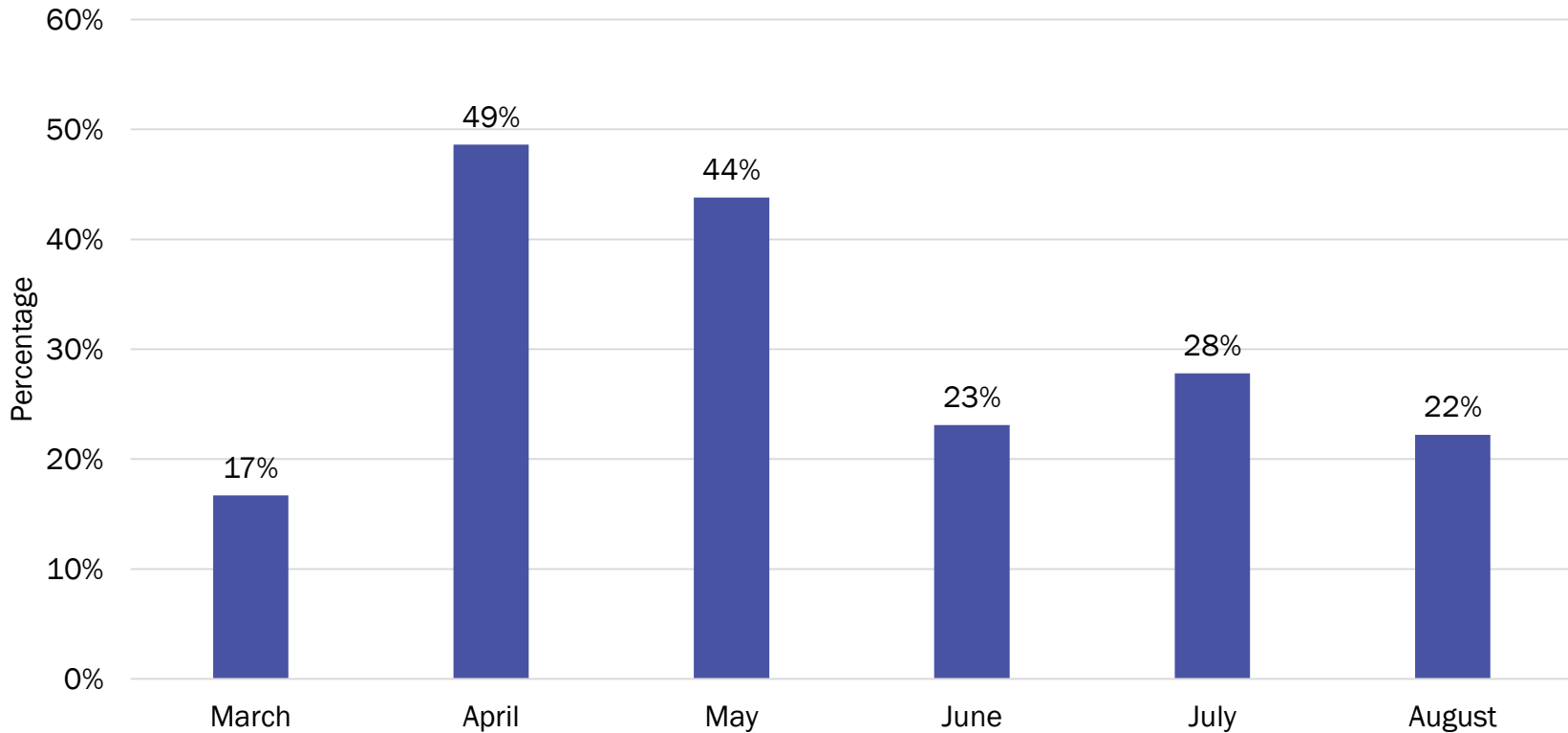
As of August 31, 2020

COVID-19 Deaths by Week of Death, New Mexico



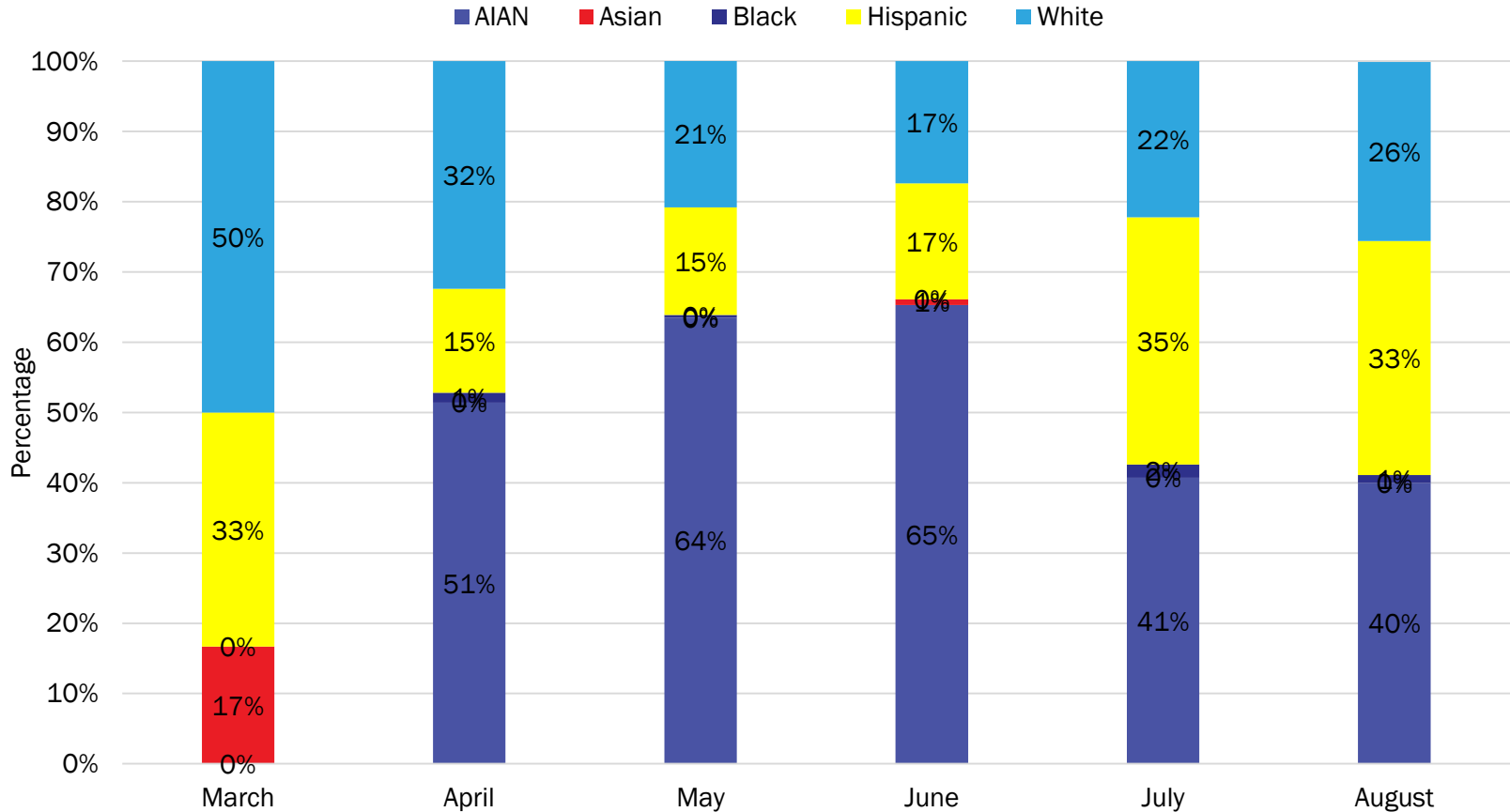
Since June, the percentage of deaths in congregate care facilities has been 20-30%

Percentage of COVID-19 Deaths in Congregate Care Facilities by Month of Death, New Mexico



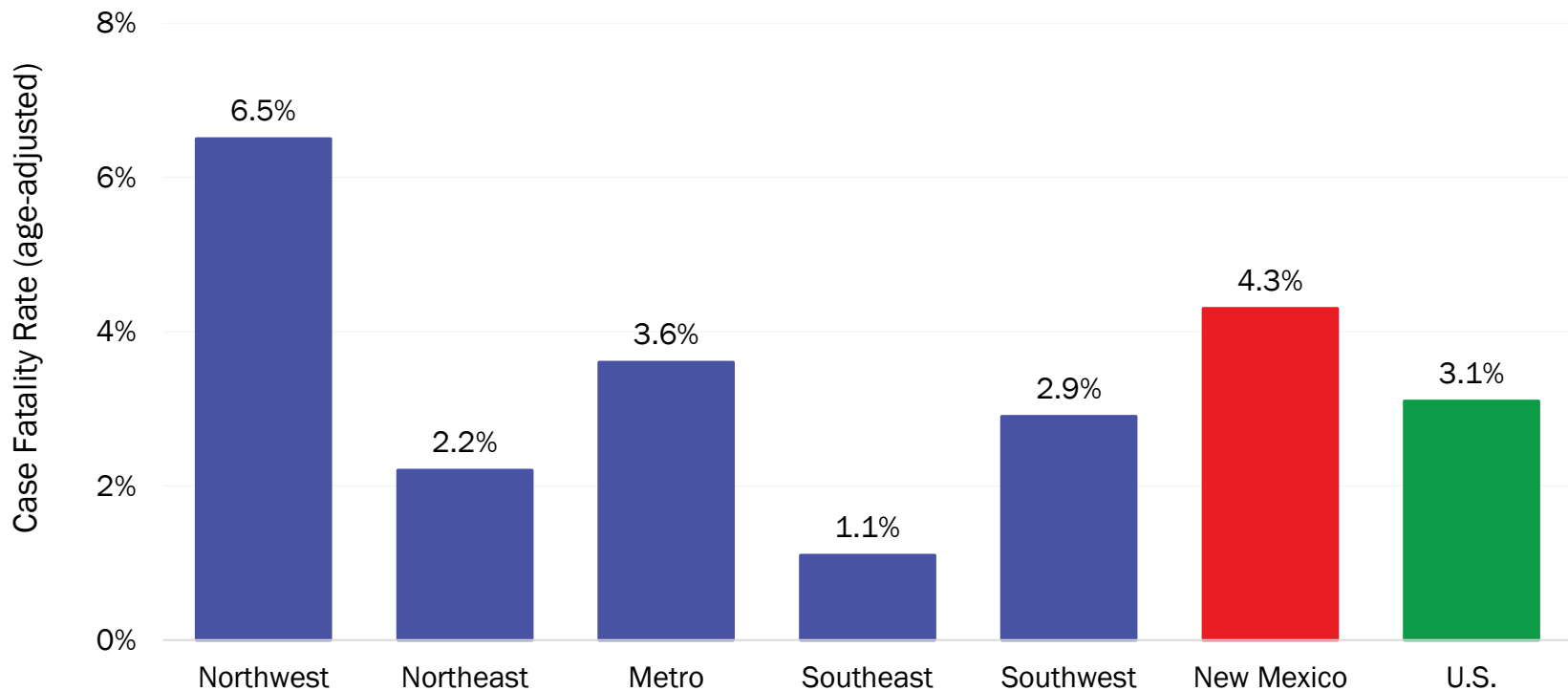
As of August 30, 2020

The percentage of deaths in Hispanic or Latinos has increased from 17% in June to 33% in August. In contrast, American Indian or Alaska Native deaths have decreased during that same time period from 65% to 40%.



As of August 30, 2020

Minimal changes in case fatality rates across regions



Note: Age-adjusted case fatality rates are adjusted to the current distribution of U.S. COVID-19 cases on 8/2. <https://www.cdc.gov/covid-data-tracker/index.html#demographics>

Source: Bureau of Vital Records and Health Statistics and Infectious Disease Epidemiology Bureau, Epidemiology and Response Division, reporting through 8.30.2020, New Mexico Department of Health.

New Mexico Status Updates

- Case count: Statewide, the increase in daily case counts continues to decline.
- Hospitalizations: After a period of increase in July, hospitalizations are decreasing.
- Deaths: Deaths are declining.
- Social distancing: Cell phone data suggests the mobility of New Mexico residents has been stable, but this varies by region.
- Contact tracing: The median time to quarantine for contacts identified last week was 1.4 days.

Supplementary Slides

Modeling Assumptions

| Variable | Measured Value | Value as of 9.1.2020 |
|-------------------------------|---|---|
| R_Effective | Actual Measured Daily Value by key county | R_eff=1.0 |
| Positive Test Multiplier | Calculated by LANL | 3.5 |
| Hospitalization and Mortality | Actual rolling value / estimated number of total infected | Medical 0.08% ICU 0.07% Vent Rate 58% of ICU Crude Case Fatality Rate 3.5% |
| Length of Stay | Actual rolling value / estimated number of total infected | Medical 5 days ICU 14 days ICU on Vent 14 days |