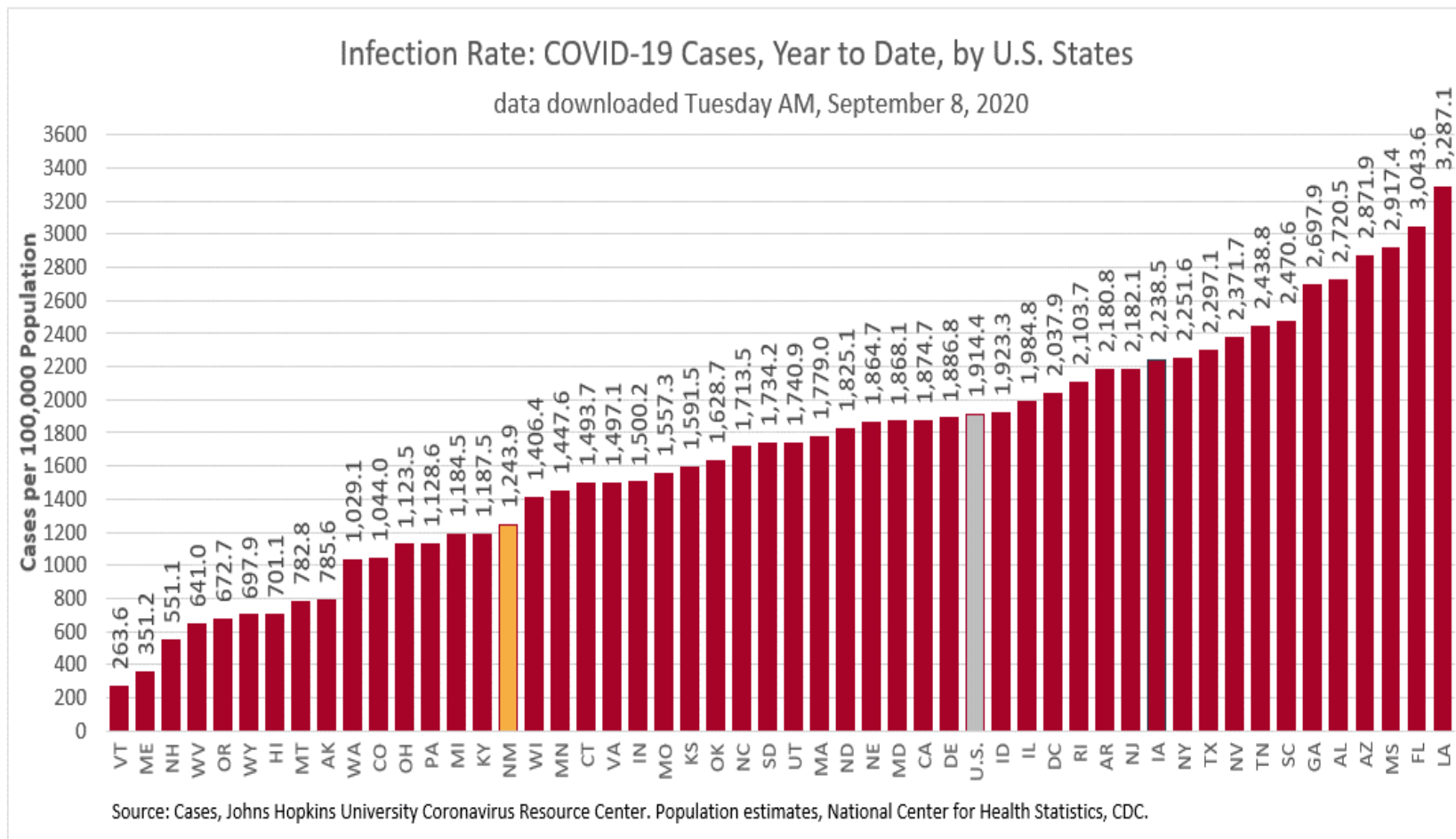


# COVID-19 in New Mexico: Epidemiologic and Modeling Update

September 8, 2020

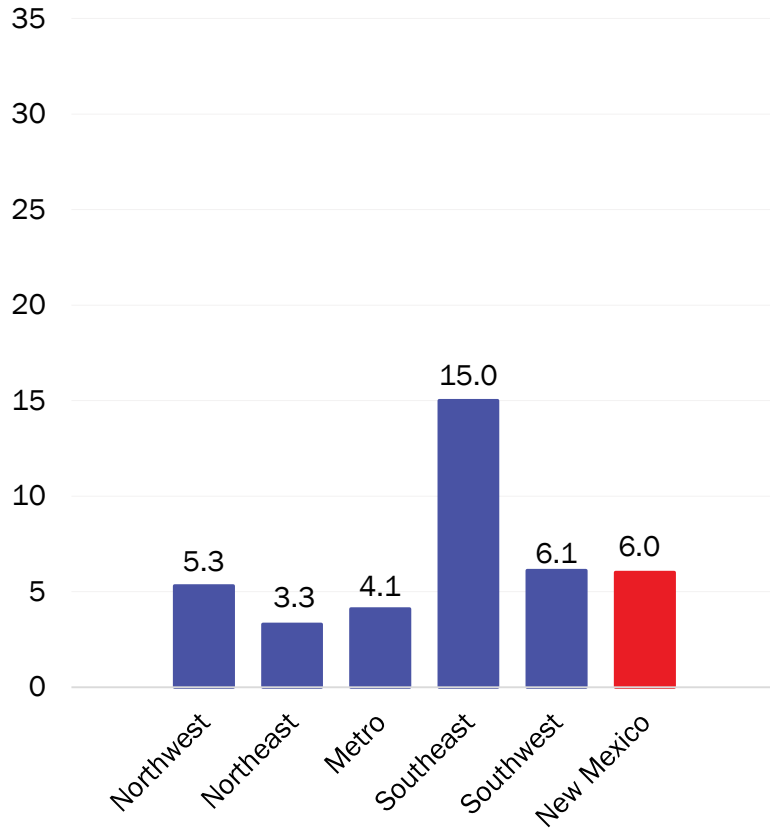
# New Mexico has the 36<sup>th</sup> highest number of cases per 100,000 population in the United States



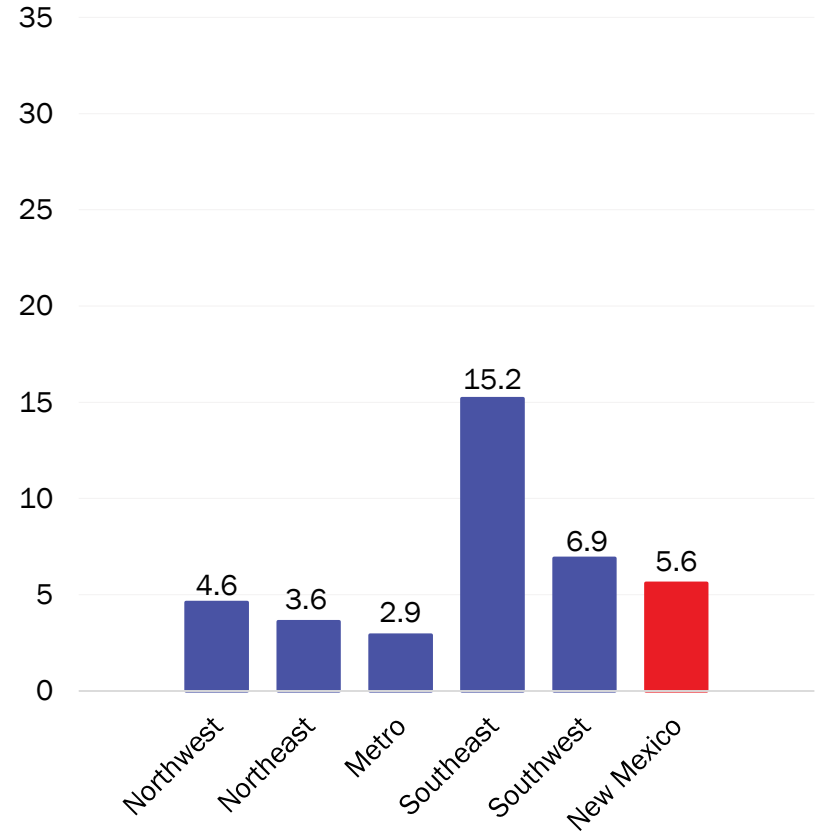
# COVID-19 prevalence per 100,000 population

\*Excludes cases among inmates in state and federal corrections and detention centers

### New cases (Last 7 days) – August 30



### New cases (Last 7 days) – September 6

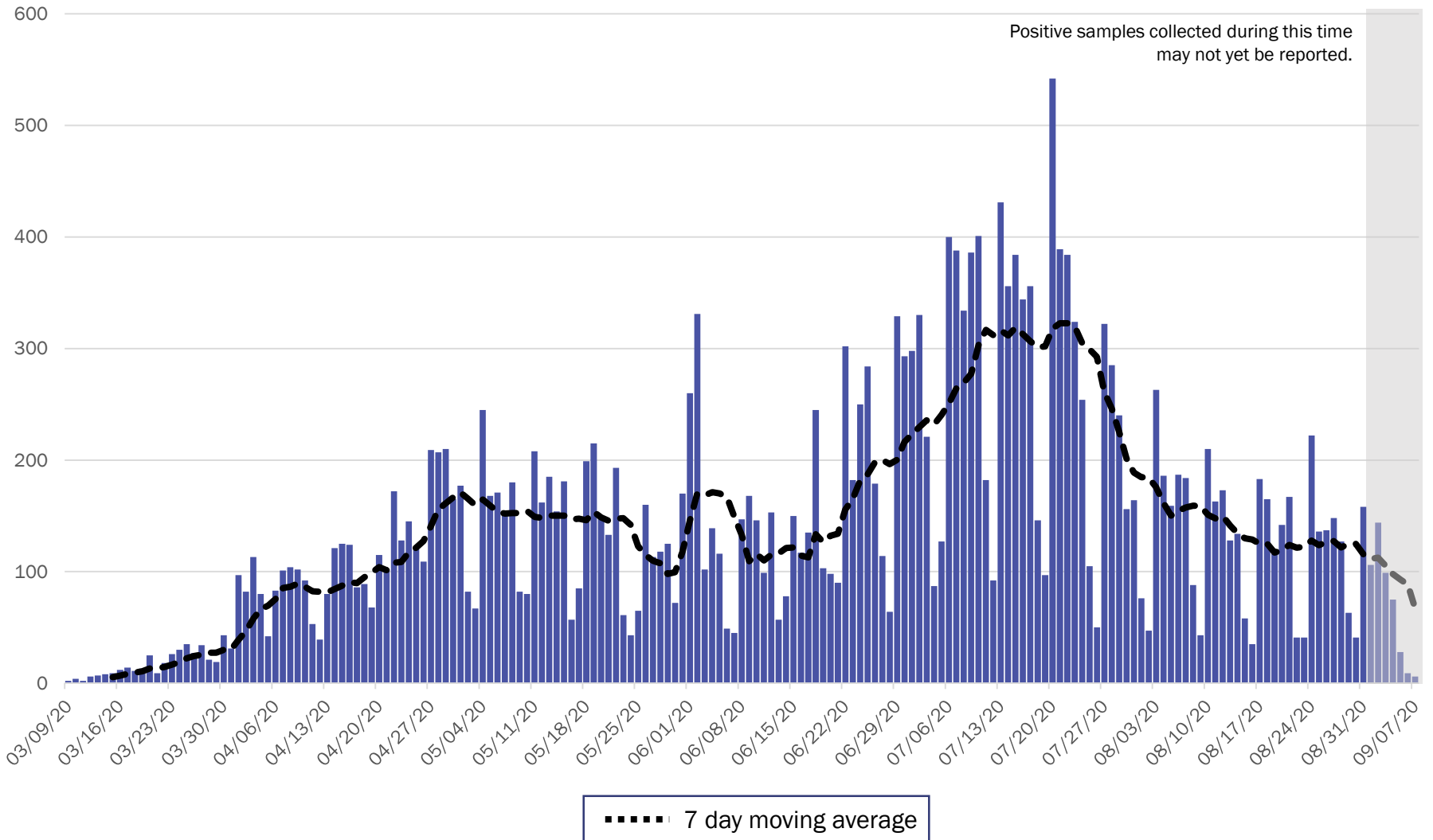


Source: Infectious Disease Epidemiology Bureau, Epidemiology and Response Division 9.6.2020, New Mexico Department of Health. Population estimates, UNM Geospatial and Population Studies Program.



*Investing for tomorrow, delivering today.*

# New Mexico COVID-19 Cases by Date of Specimen Collection – September 8, 2020



Source: Infectious Disease Epidemiology Bureau, Epidemiology and Response Division 9.8.2020, New Mexico Department of Health.

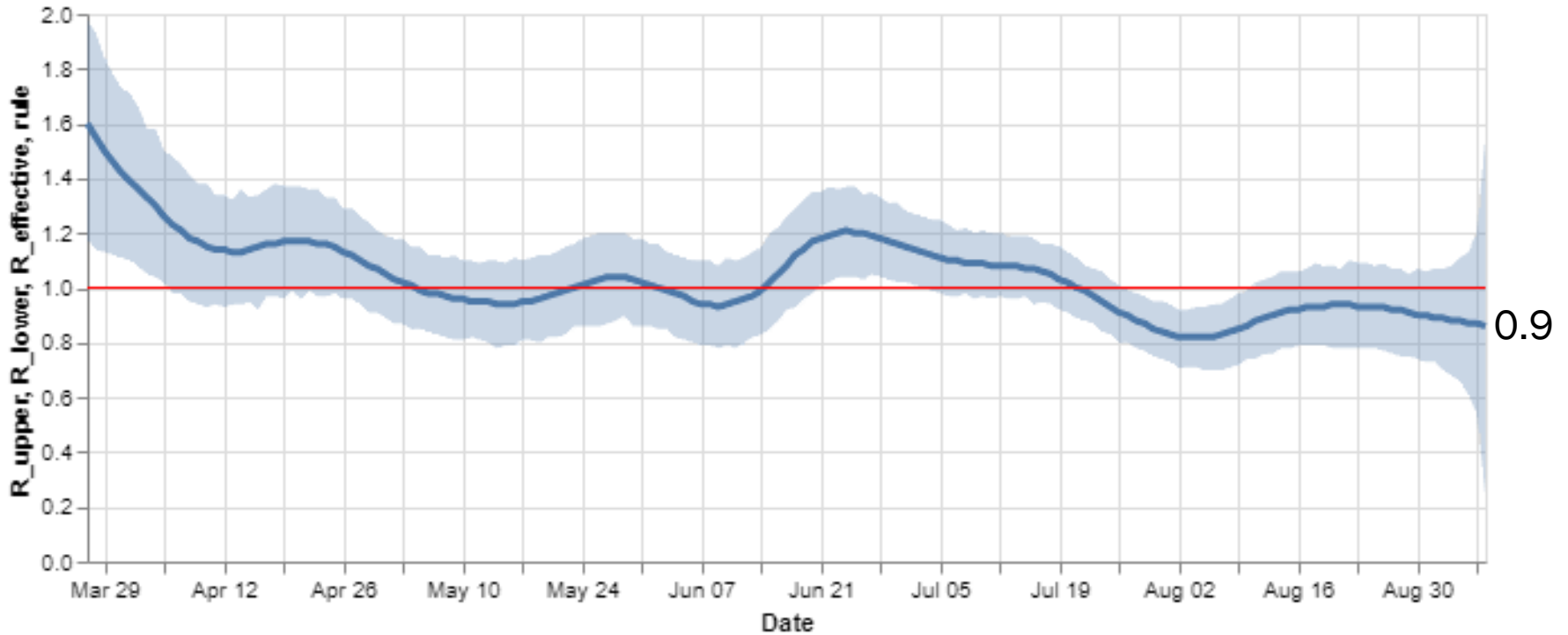


Investing for tomorrow, delivering today.

1190 S. St. Francis Drive • Santa Fe, NM 87505 • Phone: 505-827-2613 • Fax: 505-827-2530 • nmhealth.org

# Statewide R-effective has decreased to 0.9.

## R\_effective over time, STATE



Courtesy of Presbyterian Healthcare Services – September 8, 2020.

**Key**

- Low Level Endemic <1.0
- Approaching Low Level Endemic 1.0-1.05
- Requiring further mitigation >1.05

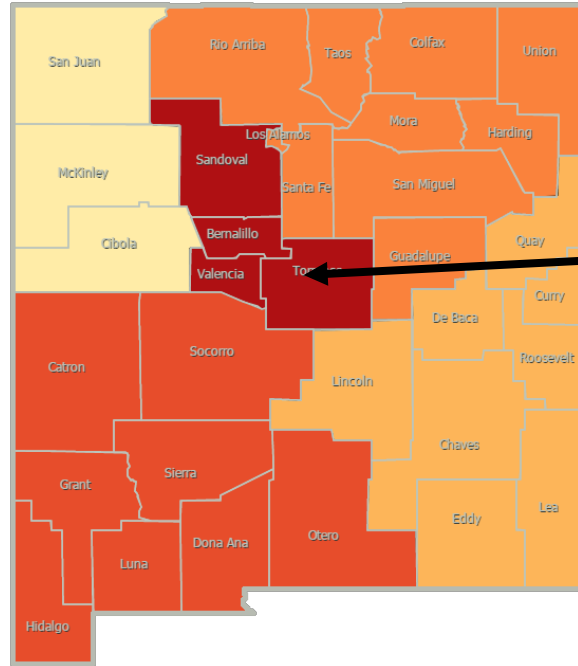
**Northwest**  
R\_effective 0.9 ↓

**Northeast**  
R\_effective 0.8 ↓

**Metro**  
R\_effective 0.6 ↓

**Southwest**  
R\_effective 1.0 =

**Southeast**  
R\_effective 0.9 =



As of September 1, 2020

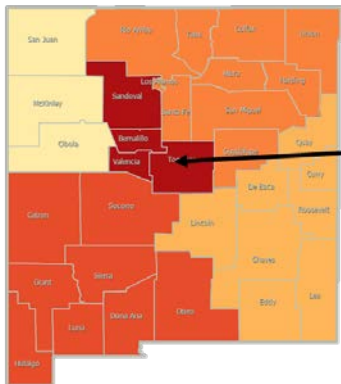
**Northwest**  
R\_effective 1.1 =

**Northeast**  
R\_effective 0.9 ↓

**Metro**  
R\_effective 1.0 ↓

**Southwest**  
R\_effective 1.0 ↑

**Southeast**  
R\_effective 0.9 =



Region	R-effective	95% Confidence Interval
State	0.9	[0.2, 1.6]
Metro	0.6	[0.0, 1.9]
Northeast	0.8	[0.0, 2.9]
Northwest	0.9	[0.0, 2.6]
Southeast	0.9	[0.0, 1.8]
Southwest	1.0	[0.0, 2.4]

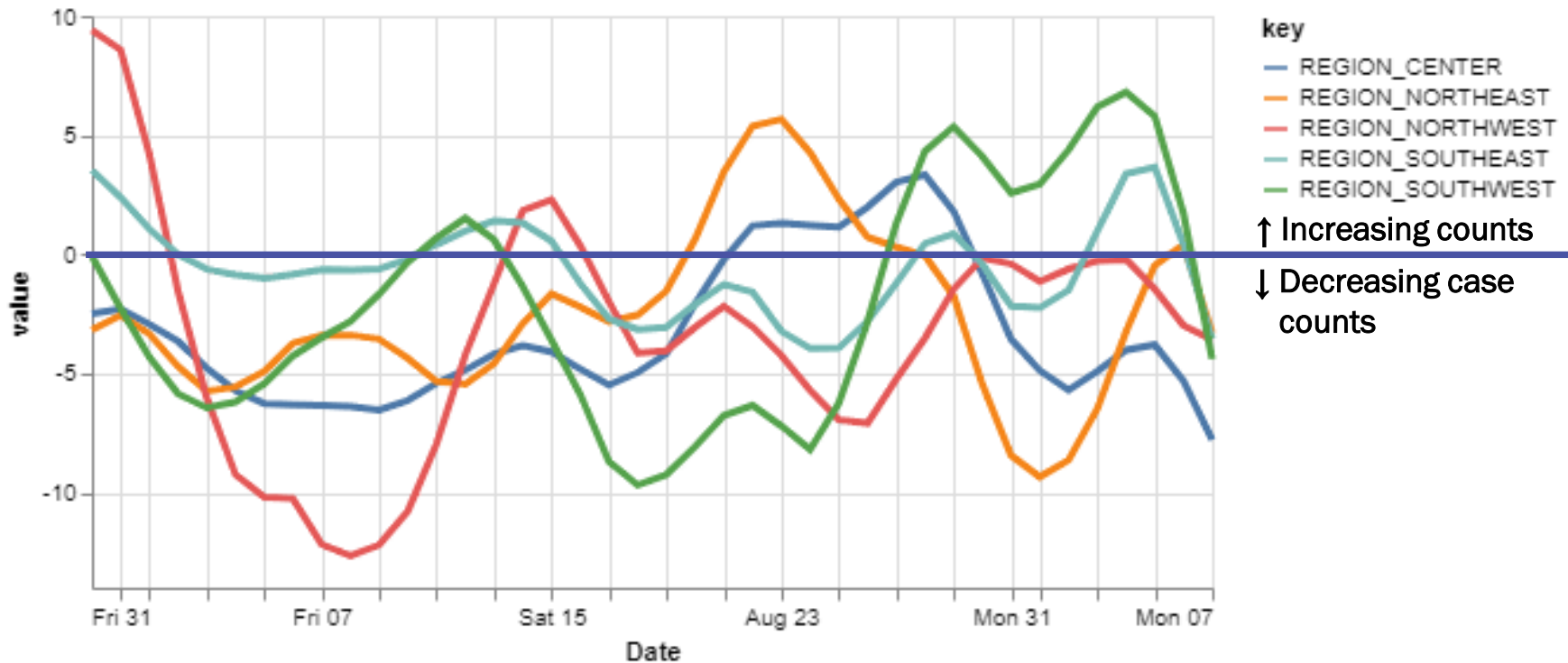
Courtesy of Presbyterian Healthcare Services – September 8, 2020.



*Investing for tomorrow, delivering today.*

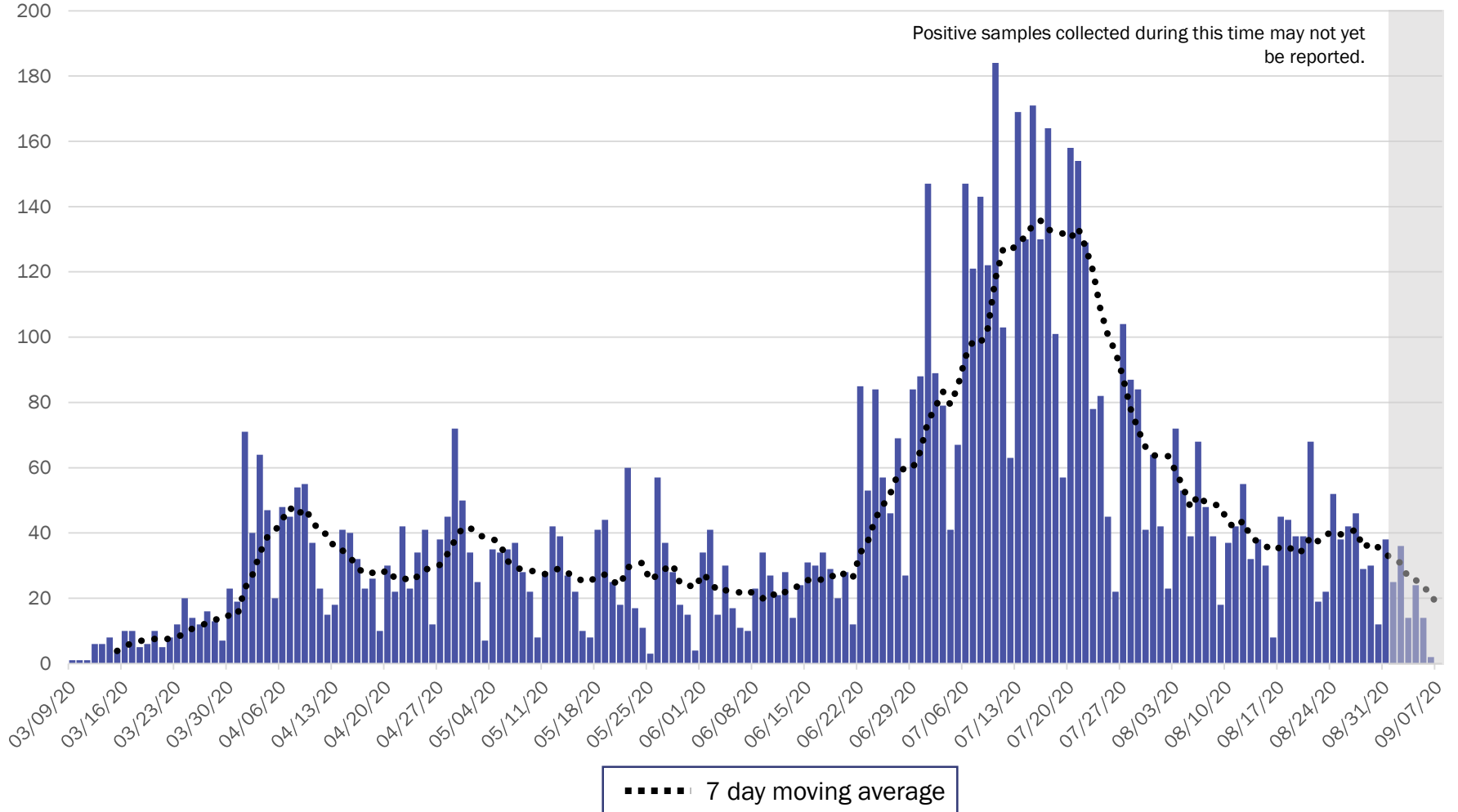
# All regions have decreasing case counts relative to the past 14 day period.

## 14-day relative growth rate (%), Regions



Courtesy of Presbyterian Healthcare Services – September 8, 2020.

## Metro Region Case Count by Collection Date with 7 Day Moving Average September 8, 2020



Source: Infectious Disease Epidemiology Bureau, Epidemiology and Response Division 9.8.2020, New Mexico Department of Health.

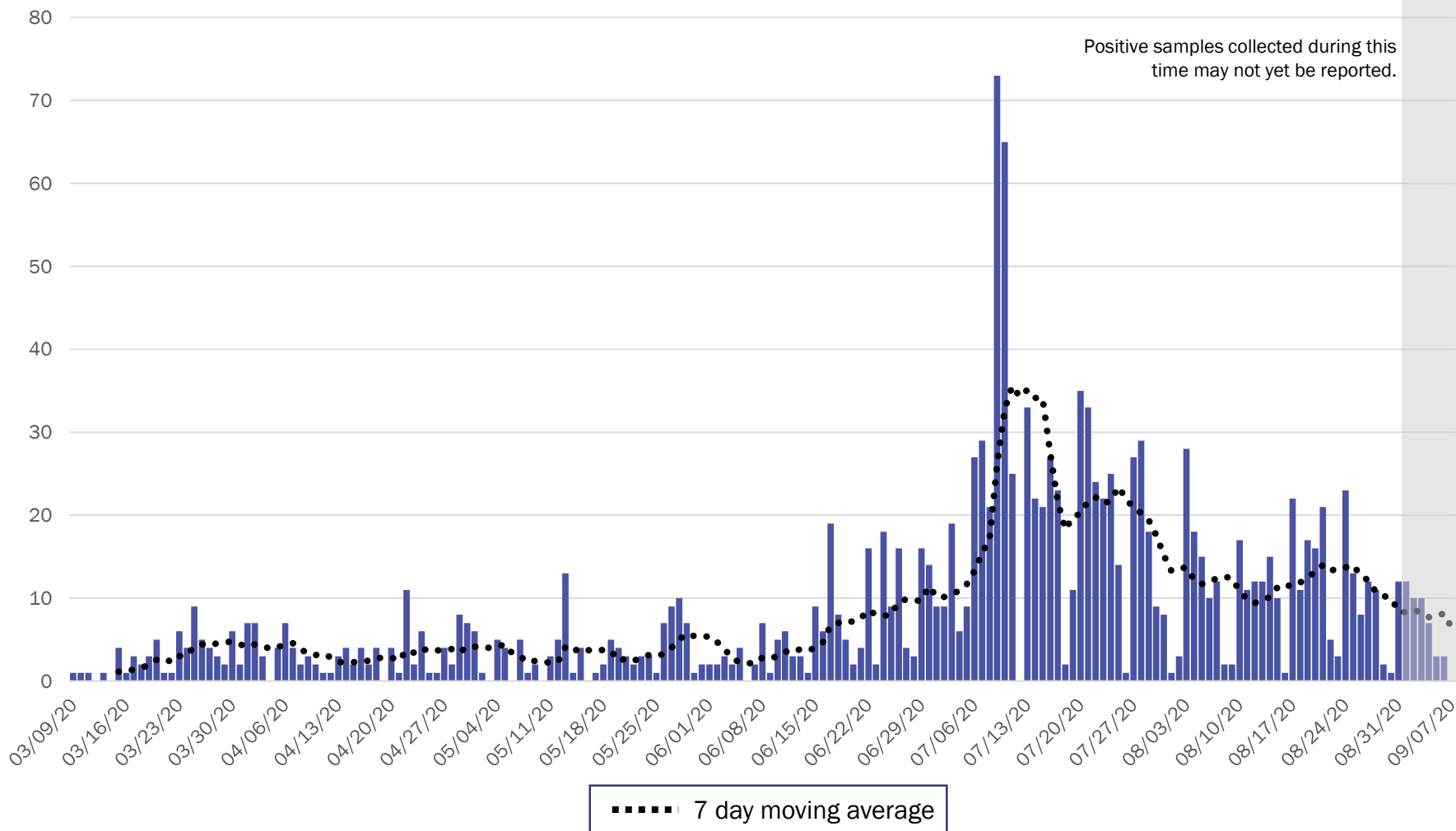


*Investing for tomorrow, delivering today.*

1190 S. St. Francis Drive • Santa Fe, NM 87505 • Phone: 505-827-2613 • Fax: 505-827-2530 • nmhealth.org



# Northeast Region Case Count by Collection Date with 7 Day Moving Average September 8, 2020

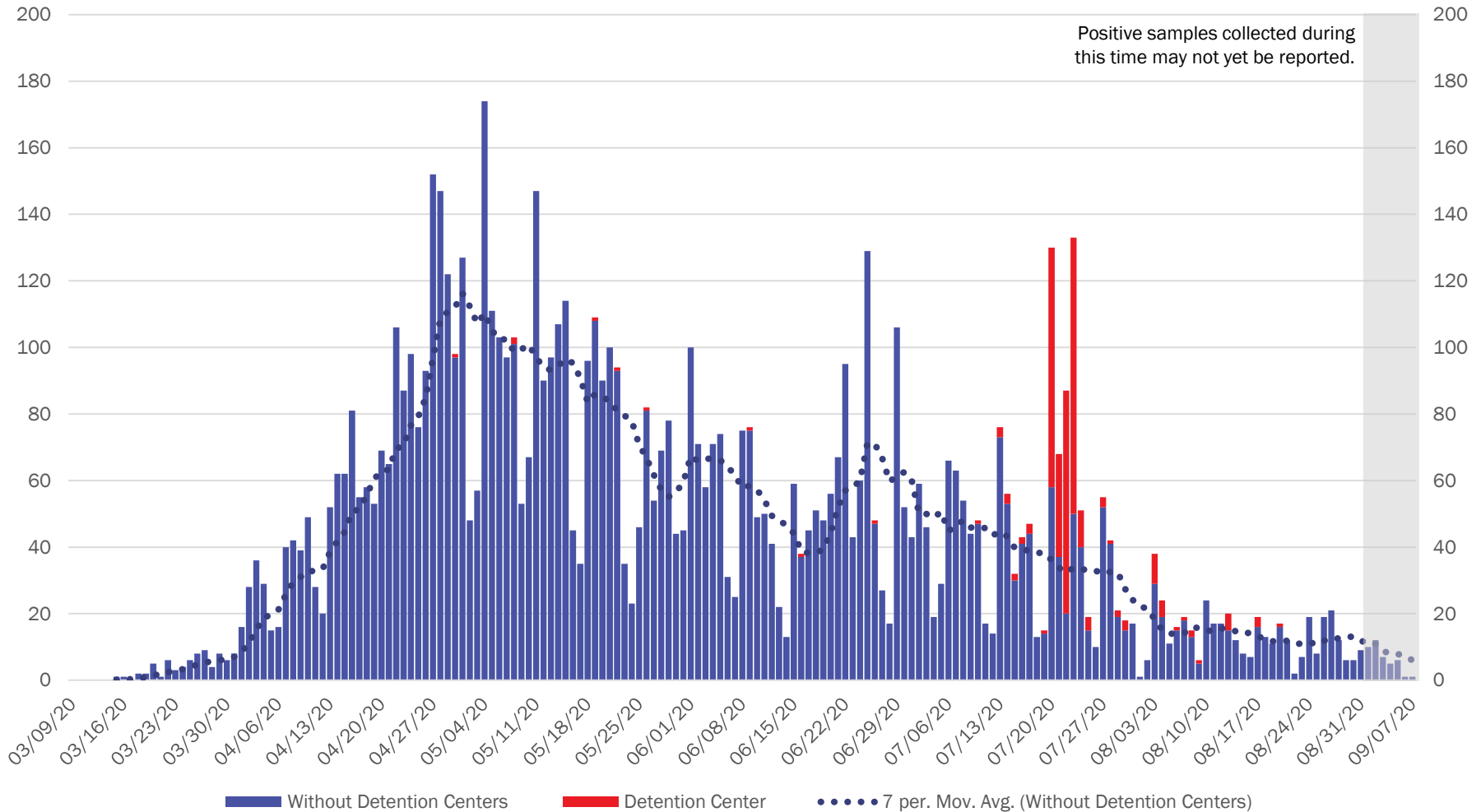


Source: Infectious Disease Epidemiology Bureau, Epidemiology and Response Division 9.8.2020, New Mexico Department of Health.



*Investing for tomorrow, delivering today.*

# Northwest Region Case Count by Collection Date with 7 Day Moving Average September 8, 2020



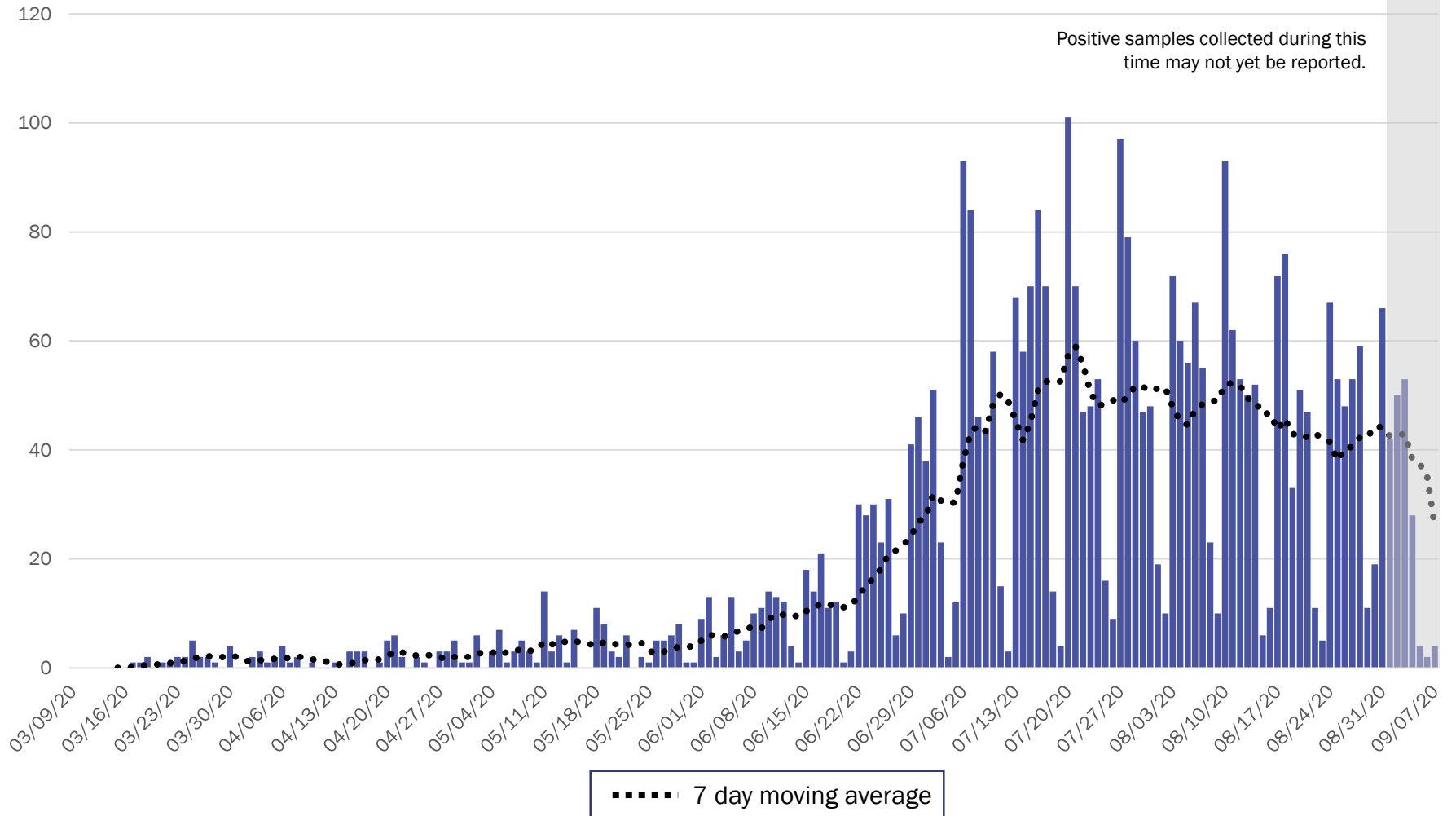
Source: Infectious Disease Epidemiology Bureau, Epidemiology and Response Division 9.8.2020, New Mexico Department of Health.



*Investing for tomorrow, delivering today.*

1190 S. St. Francis Drive • Santa Fe, NM 87505 • Phone: 505-827-2613 • Fax: 505-827-2530 • nmhealth.org

# Southeast Region Case Count by Collection Date with 7 Day Moving Average September 8, 2020

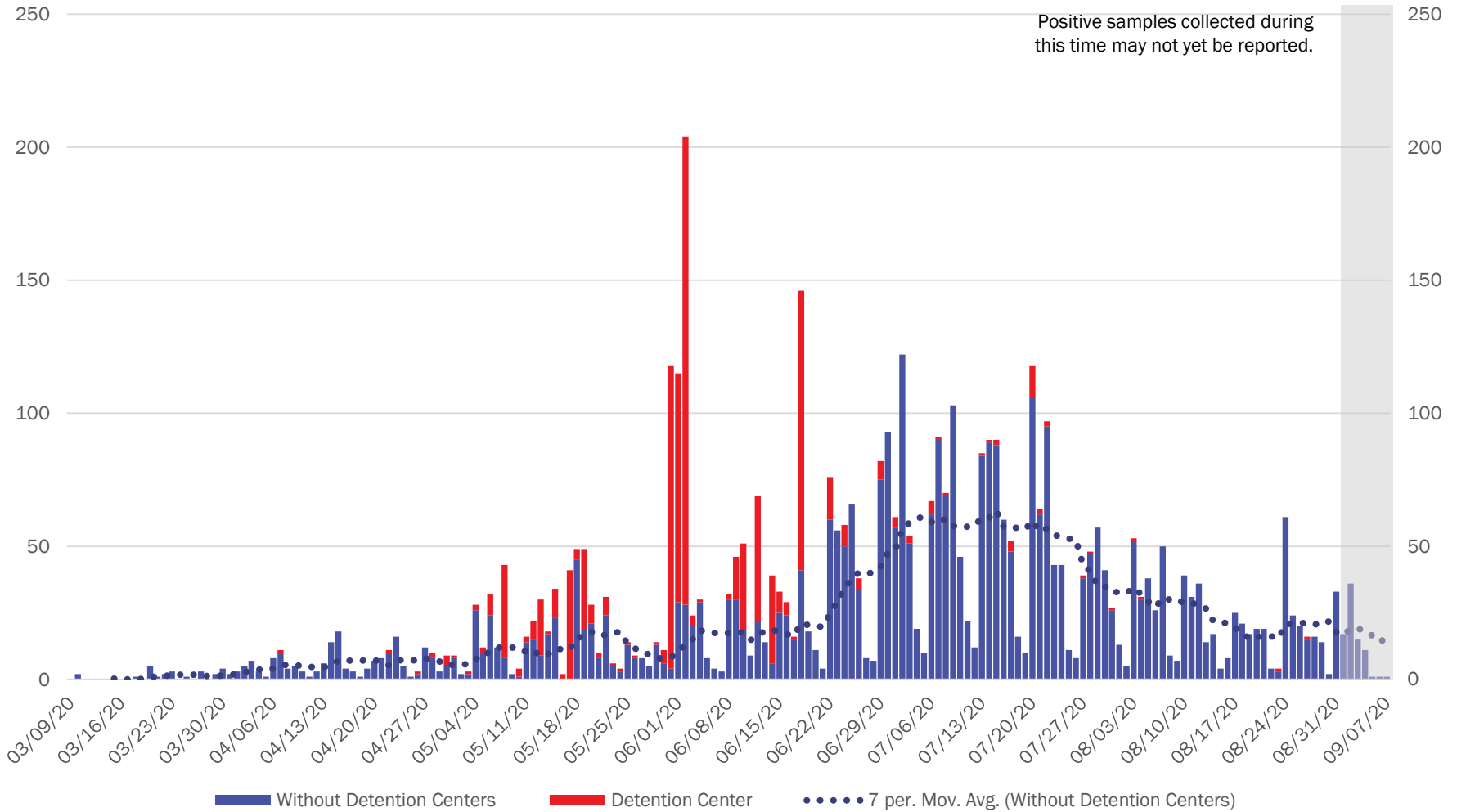


Source: Infectious Disease Epidemiology Bureau, Epidemiology and Response Division 9.8.2020, New Mexico Department of Health.



*Investing for tomorrow, delivering today.*

# Southwest Region Case Count by Collection Date with 7 Day Moving Average September 8, 2020



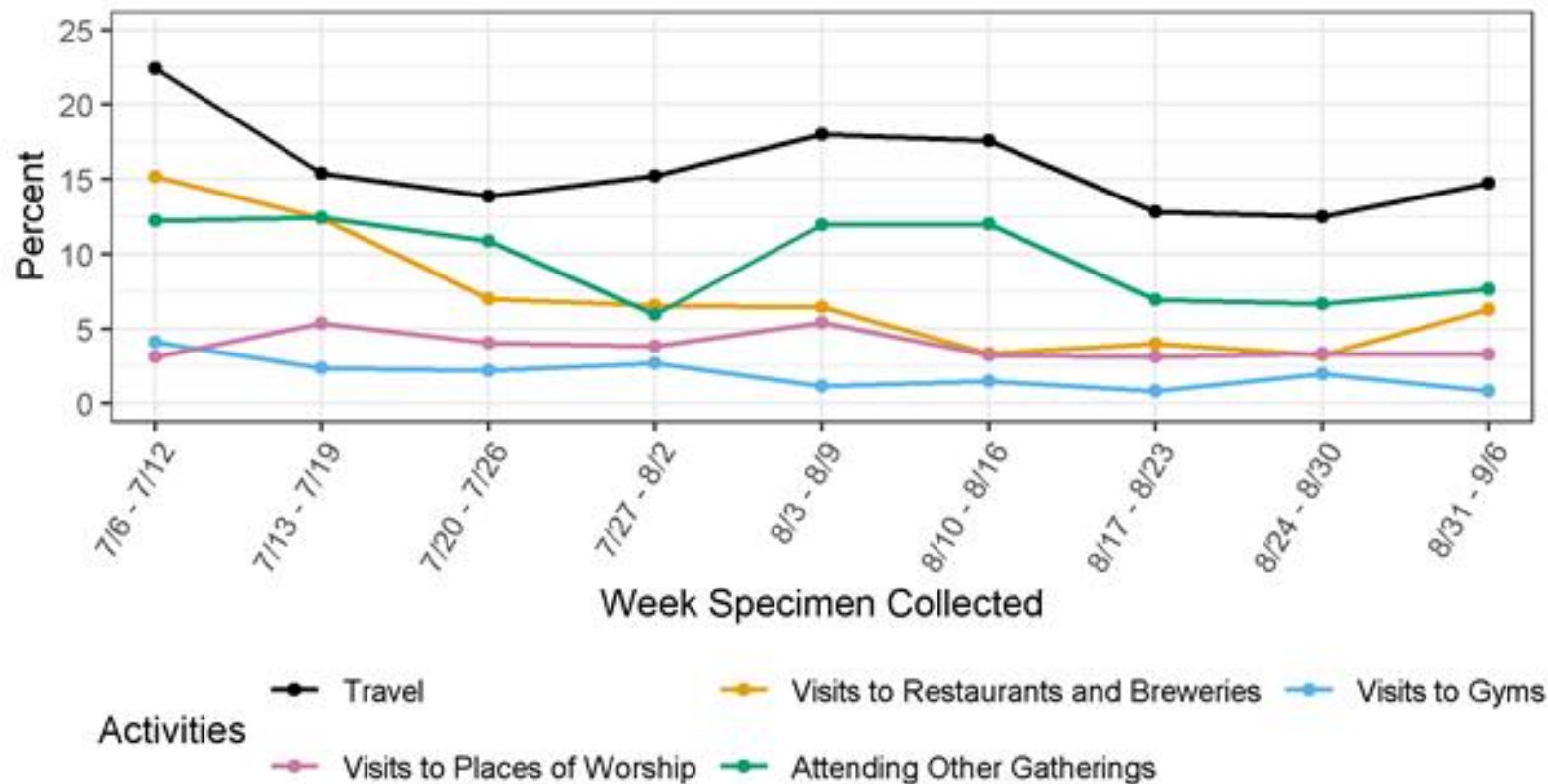
Source: Infectious Disease Epidemiology Bureau, Epidemiology and Response Division 9.8.2020, New Mexico Department of Health.



*Investing for tomorrow, delivering today.*

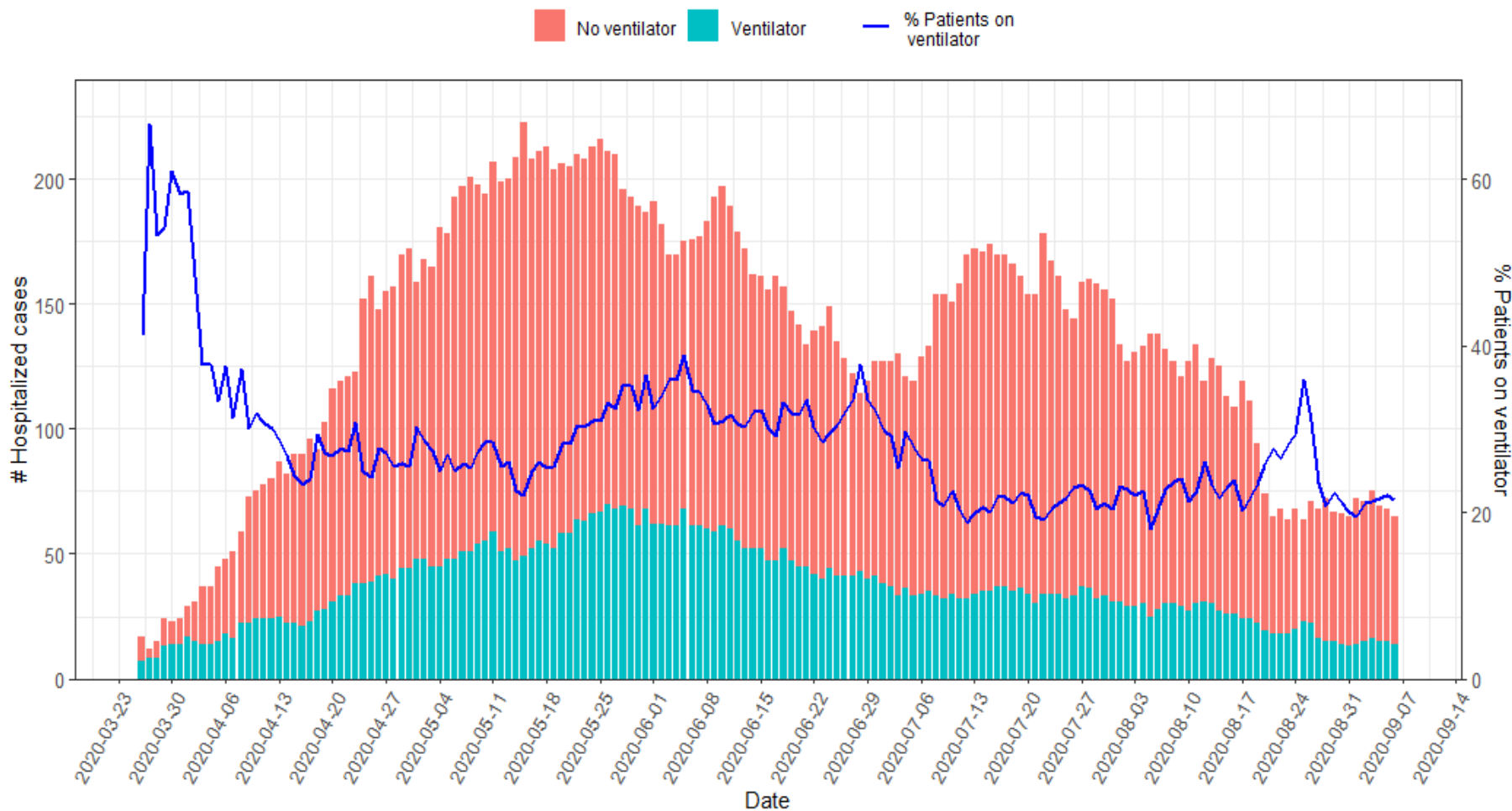
1190 S. St. Francis Drive • Santa Fe, NM 87505 • Phone: 505-827-2613 • Fax: 505-827-2530 • nmhealth.org

For cases reporting activities, travel and visits to restaurants and breweries may be beginning to increase.



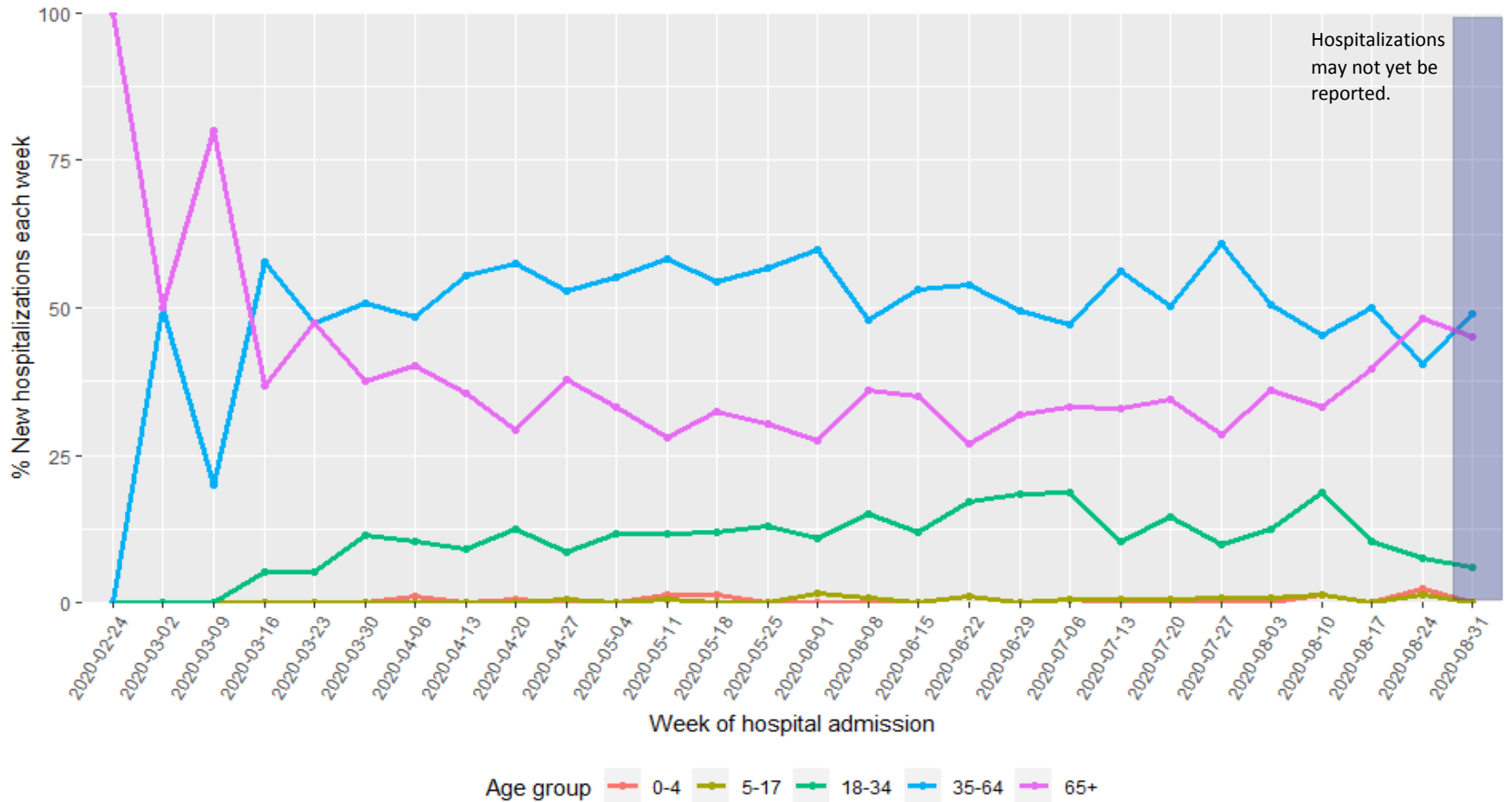
As of September 6, 2020

# Since about mid-August, there have been $\leq 75$ hospitalized cases each day



As of September 7, 2020

**Last week, the percentage of hospital admissions of patients who are 35-64 years old increased slightly compared to those who are 65+ years old.**

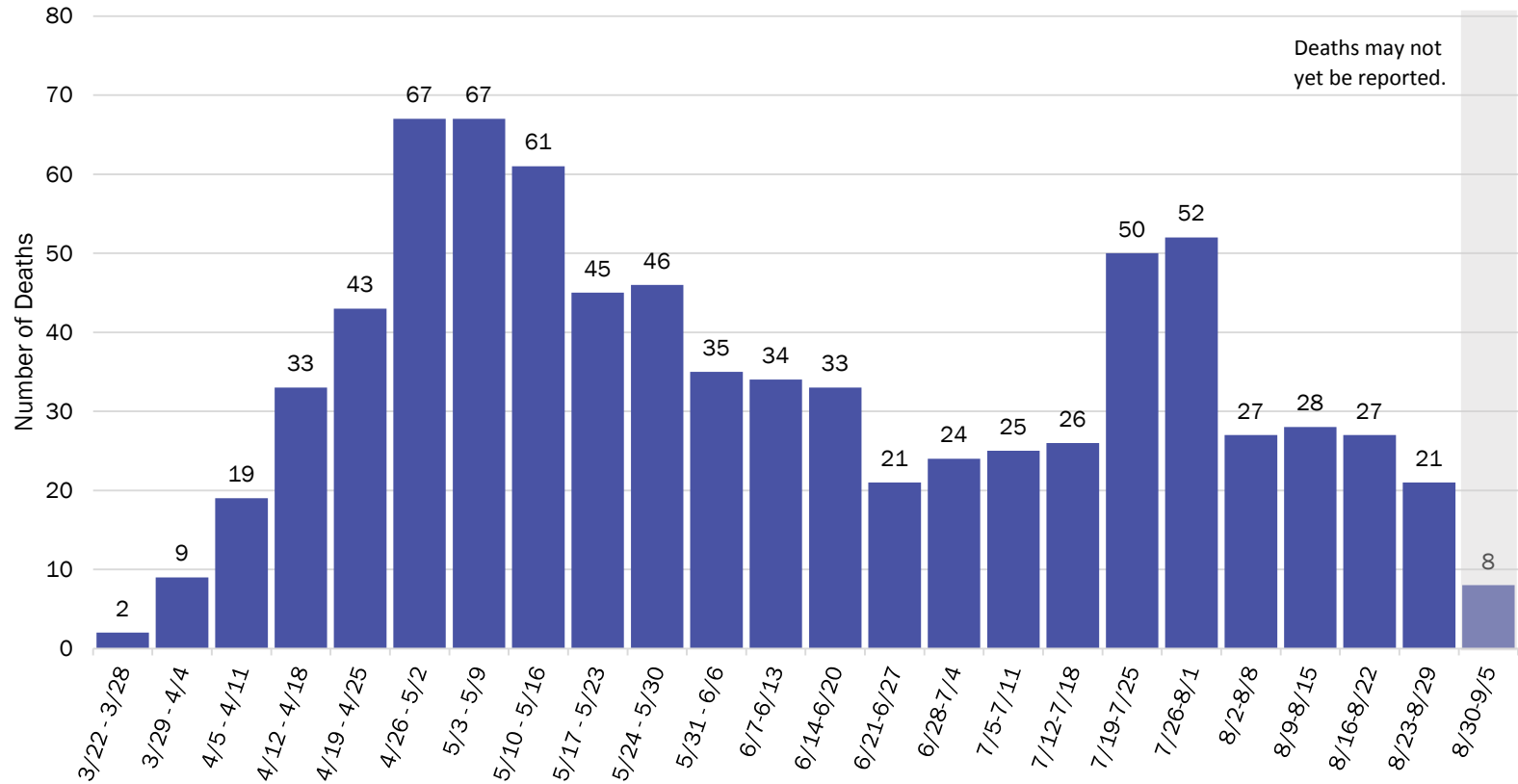


As of September 7, 2020



*Investing for tomorrow, delivering today.*

# COVID-19 Deaths by Week of Death, New Mexico



As of September 6, 2020

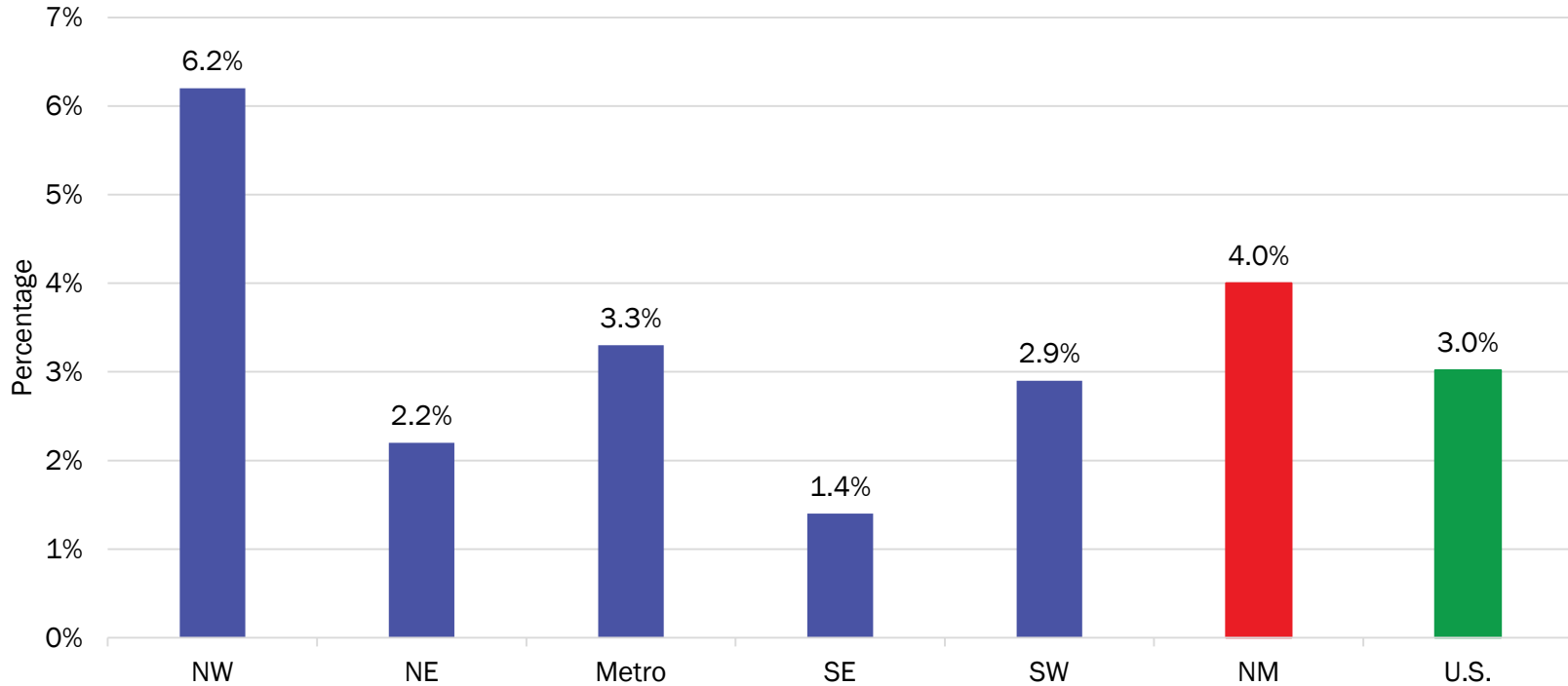


*Investing for tomorrow, delivering today.*



# Minimal changes in case fatality rates across regions

COVID-19 Age-Adjusted\* Case Fatality Rate by Region, New Mexico



\*Adjusted to U.S. COVID-19 cases on 9/6.

Note: Age-adjusted case fatality rates are adjusted to the current distribution of U.S. COVID-19 cases on 9/6. <https://www.cdc.gov/covid-data-tracker/index.html#demographics>

Source: Bureau of Vital Records and Health Statistics and Infectious Disease Epidemiology Bureau, Epidemiology and Response Division, reporting through 9.6.2020, New Mexico Department of Health.

# New Mexico Status Updates

- Case count: Statewide, daily case counts continue to decline.
- Hospitalizations: After a period of recent decline in July, hospitalizations have remained steady.
- Deaths: Deaths are declining.
- Contact tracing: The median time to quarantine for contacts identified last week was approximately 1 day.

# Supplementary Slides

# Modeling Assumptions

Variable	Measured Value	Value as of 9.8.2020
R_Effective	Actual Measured Daily Value by key county	R_eff=0.9
Positive Test Multiplier	Calculated by LANL	3.4
Hospitalization and Mortality	Actual rolling value / estimated number of total infected	Medical 0.09% ICU 0.07% Vent Rate 50% of ICU Crude Case Fatality Rate 3.4%
Length of Stay	Actual rolling value / estimated number of total infected	Medical 5 days ICU 14 days ICU on Vent 14 days