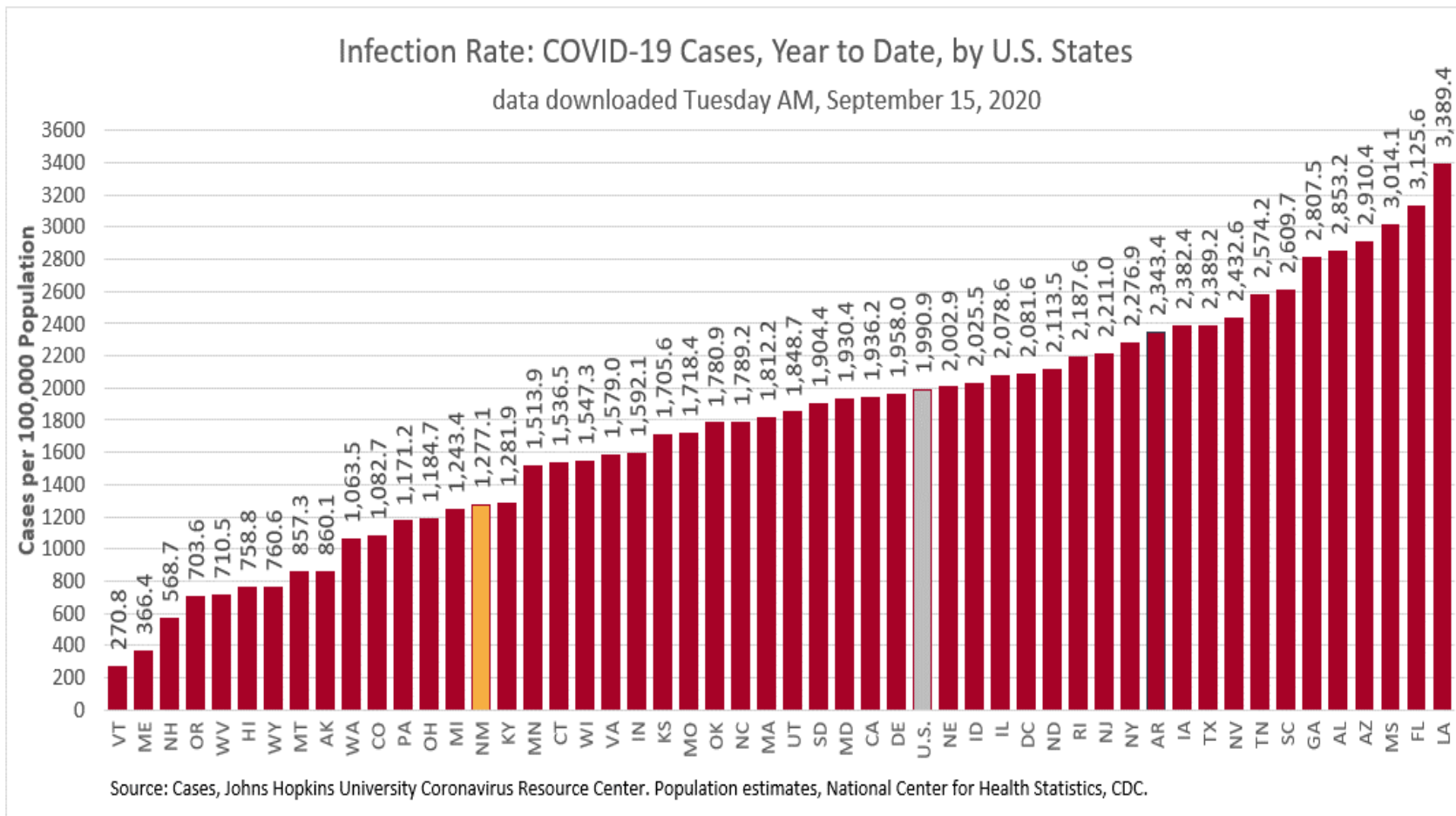


# COVID-19 in New Mexico: Epidemiologic and Modeling Update

September 15, 2020

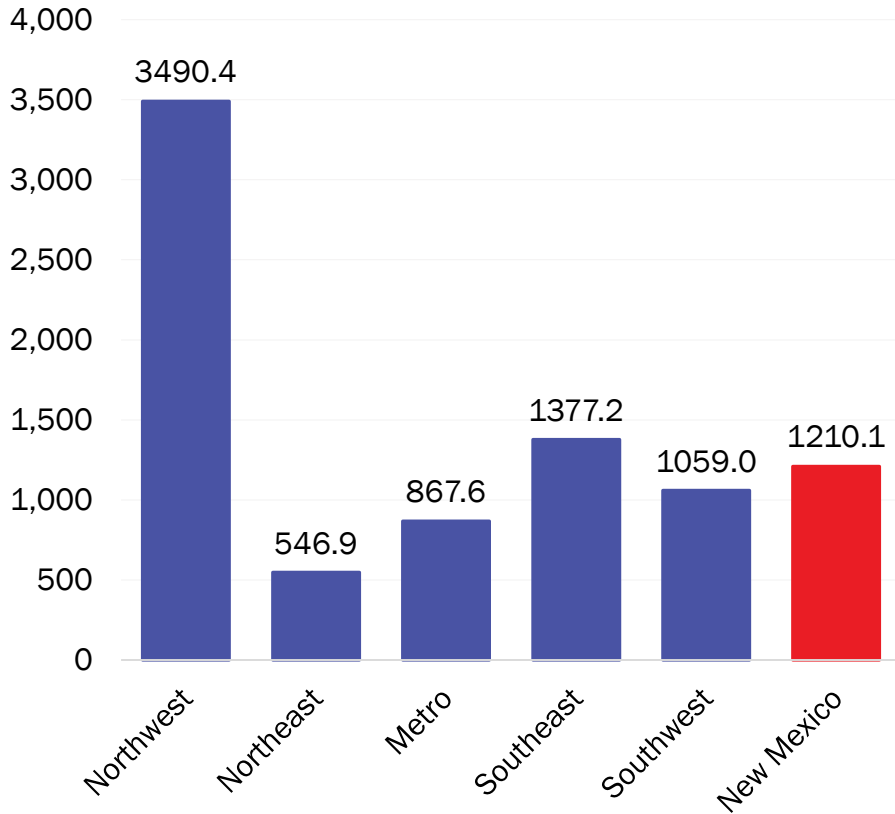
# New Mexico has the 37<sup>th</sup> highest number of cases per 100,000 population in the United States



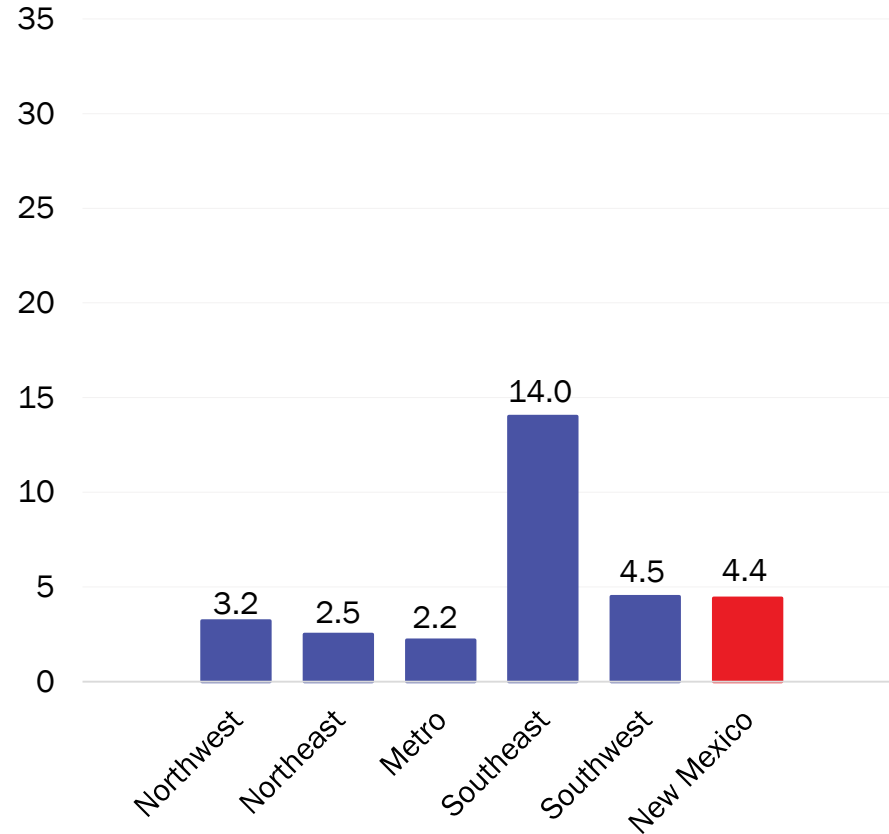
# COVID-19 prevalence per 100,000 population

\*Excludes cases among inmates in state and federal corrections and detention centers

## Year-to-Date



## New cases (Last 7 days) – September 7-13



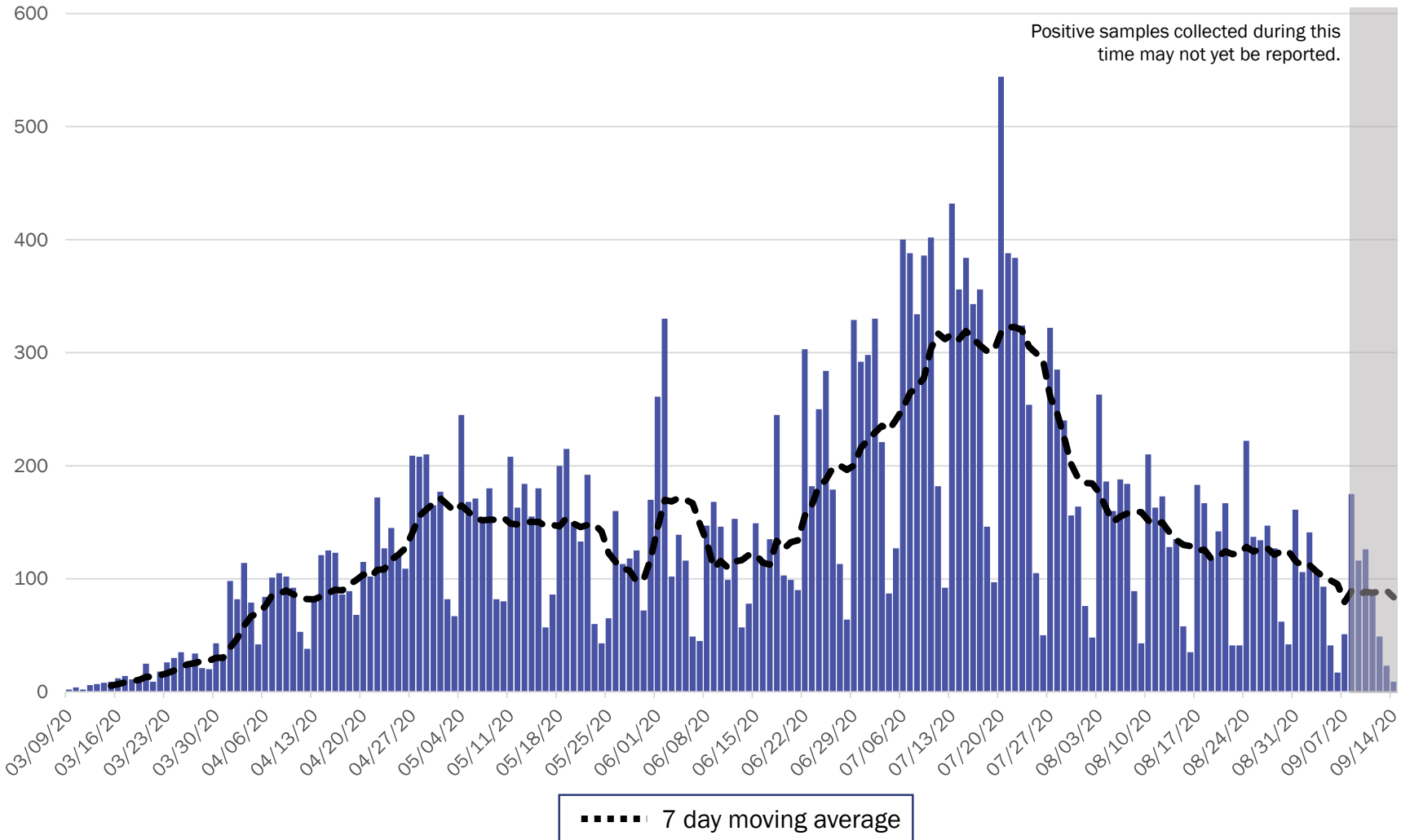
Source: Infectious Disease Epidemiology Bureau, Epidemiology and Response Division 9.13.2020, New Mexico Department of Health. Population estimates, UNM Geospatial and Population Studies Program.



*Investing for tomorrow, delivering today.*

1190 S. St. Francis Drive • Santa Fe, NM 87505 • Phone: 505-827-2613 • Fax: 505-827-2530 • nmhealth.org

# New Mexico COVID-19 Cases by Date of Specimen Collection – September 15, 2020



Source: Infectious Disease Epidemiology Bureau, Epidemiology and Response Division 9.15.2020, New Mexico Department of Health.

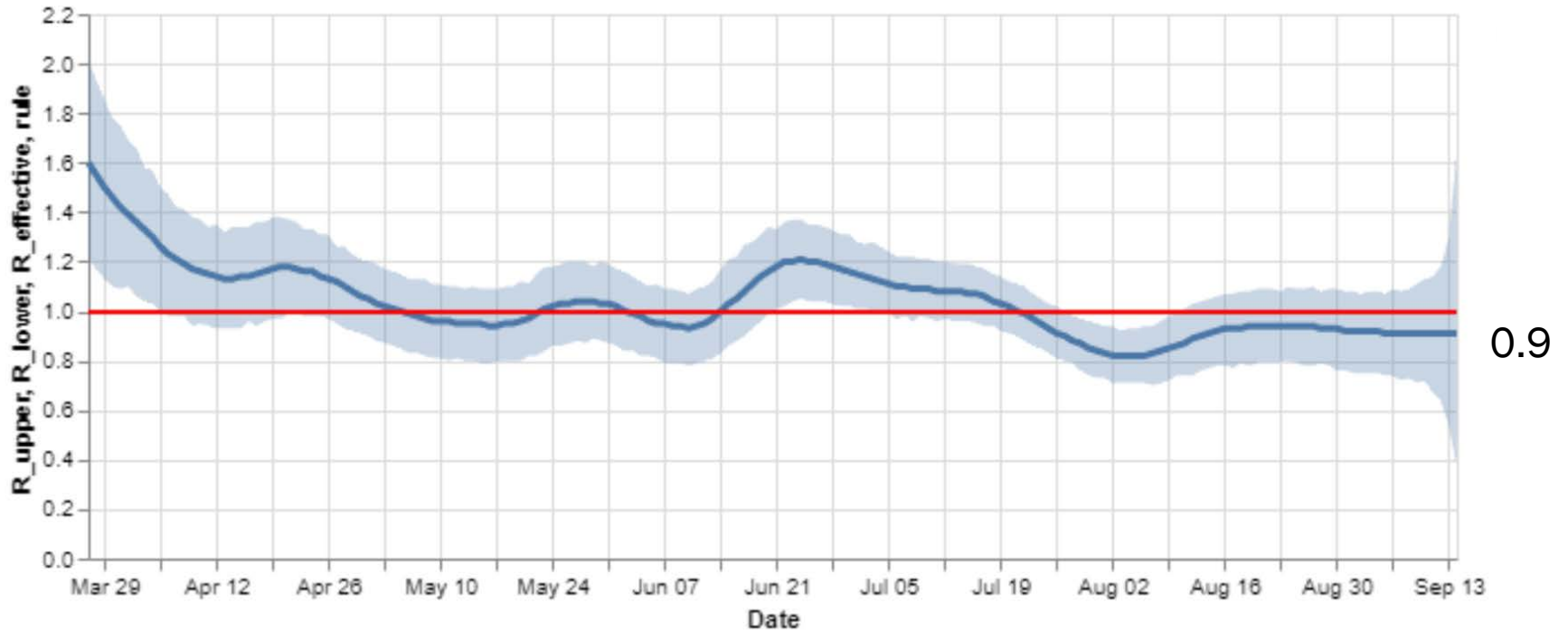


*Investing for tomorrow, delivering today.*

1190 S. St. Francis Drive • Santa Fe, NM 87505 • Phone: 505-827-2613 • Fax: 505-827-2530 • nmhealth.org

# Statewide R-effective has remained at 0.9.

## R\_effective over time, STATE



Courtesy of Presbyterian Healthcare Services – September 15, 2020.

**Key**

Low Level Endemic  
**<1.0**

Approaching Low Level Endemic  
**1.0-1.05**

Requiring further mitigation  
**>1.05**

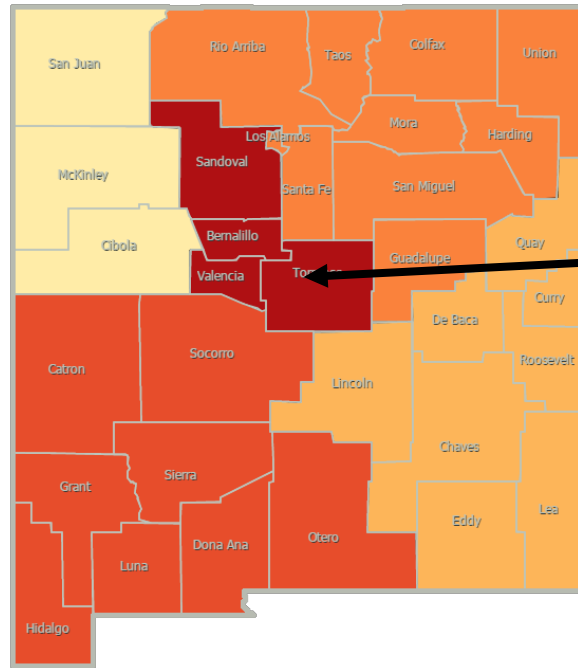
**Northwest**  
**R\_effective 0.7 ↓**

**Northeast**  
**R\_effective 1.0 ↑**

**Metro**  
**R\_effective 0.8 ↑**

**Southwest**  
**R\_effective 0.9 ↓**

**Southeast**  
**R\_effective 1.0 ↑**



As of September 8, 2020

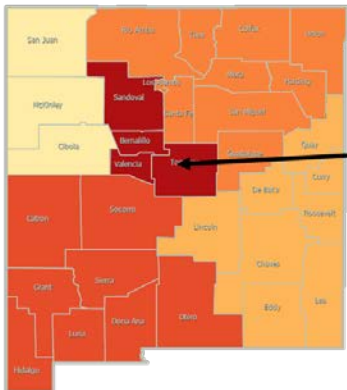
**Northwest**  
**R\_effective 0.9 ↓**

**Northeast**  
**R\_effective 0.8 ↓**

**Metro**  
**R\_effective 0.6 ↓**

**Southwest**  
**R\_effective 1.0 =**

**Southeast**  
**R\_effective 0.9 =**

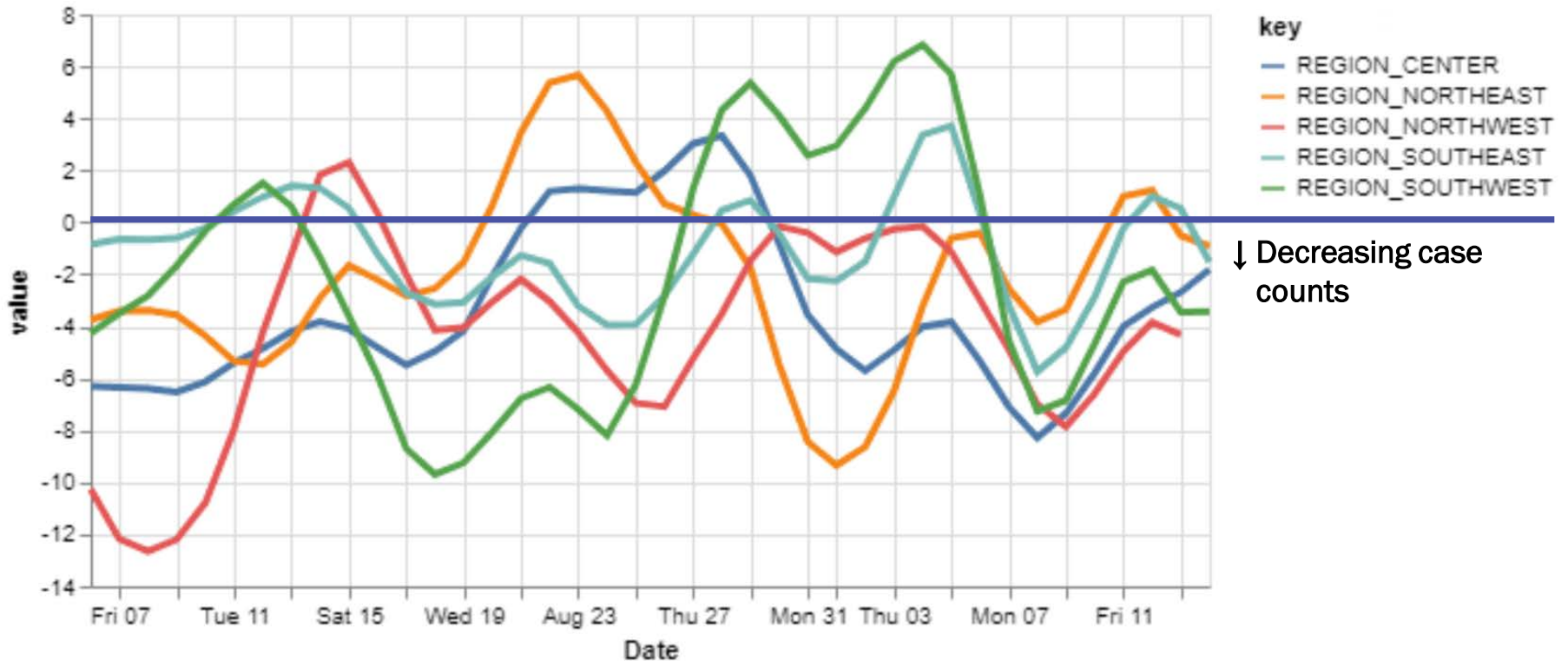


Region	R-effective	95% Confidence Interval
State	0.9	[0.4, 1.7]
Metro	0.8	[0.0, 2.5]
Northeast	1.0	[0.0, 4.0]
Northwest	0.7	[0.0, 2.3]
Southeast	1.0	[0.0, 2.0]
Southwest	0.9	[0.0, 2.6]

Courtesy of Presbyterian Healthcare Services – September 15, 2020.

# All regions have decreasing case counts relative to the past 14 day period.

## 14-day relative growth rate (%), Regions



Courtesy of Presbyterian Healthcare Services – September 15, 2020.

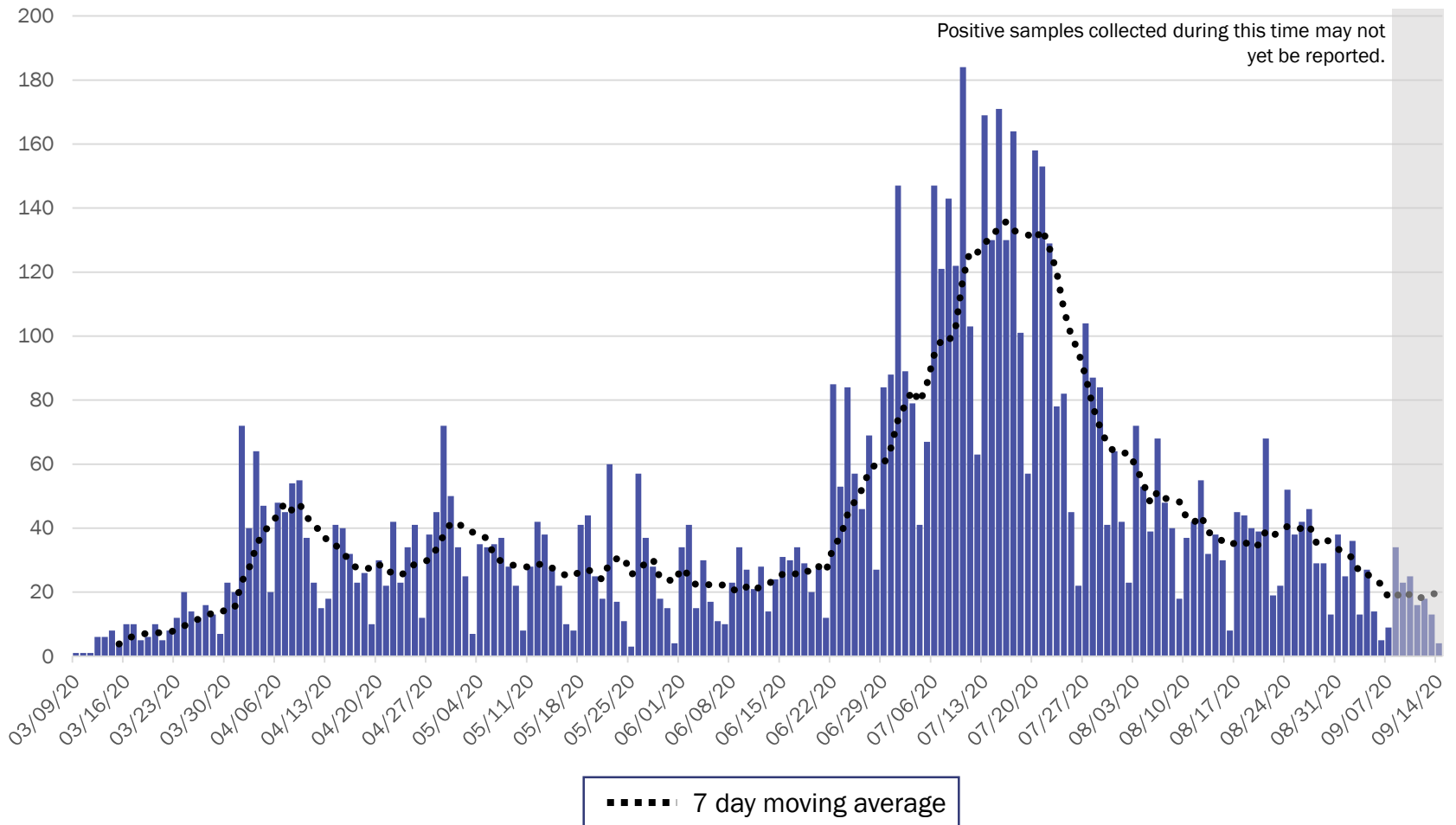


*Investing for tomorrow, delivering today.*



1190 S. St. Francis Drive • Santa Fe, NM 87505 • Phone: 505-827-2613 • Fax: 505-827-2530 • nmhealth.org

## Metro Region Case Count by Collection Date with 7 Day Moving Average September 15, 2020



Source: Infectious Disease Epidemiology Bureau, Epidemiology and Response Division 9.15.2020, New Mexico Department of Health.



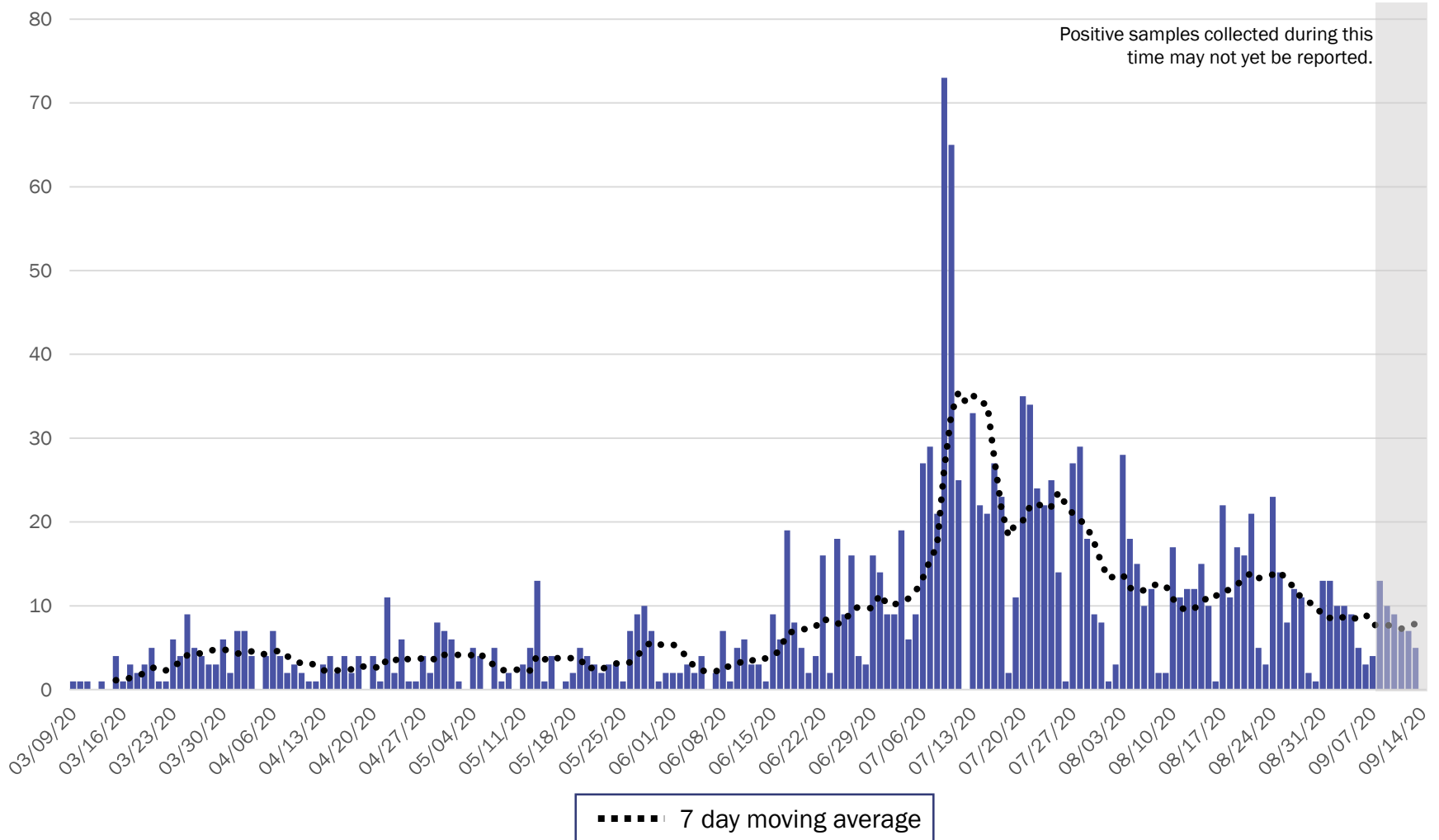
*Investing for tomorrow, delivering today.*

1190 S. St. Francis Drive • Santa Fe, NM 87505 • Phone: 505-827-2613 • Fax: 505-827-2530 • nmhealth.org



# Northeast Region Case Count by Collection Date with 7 Day Moving Average

## September 15, 2020



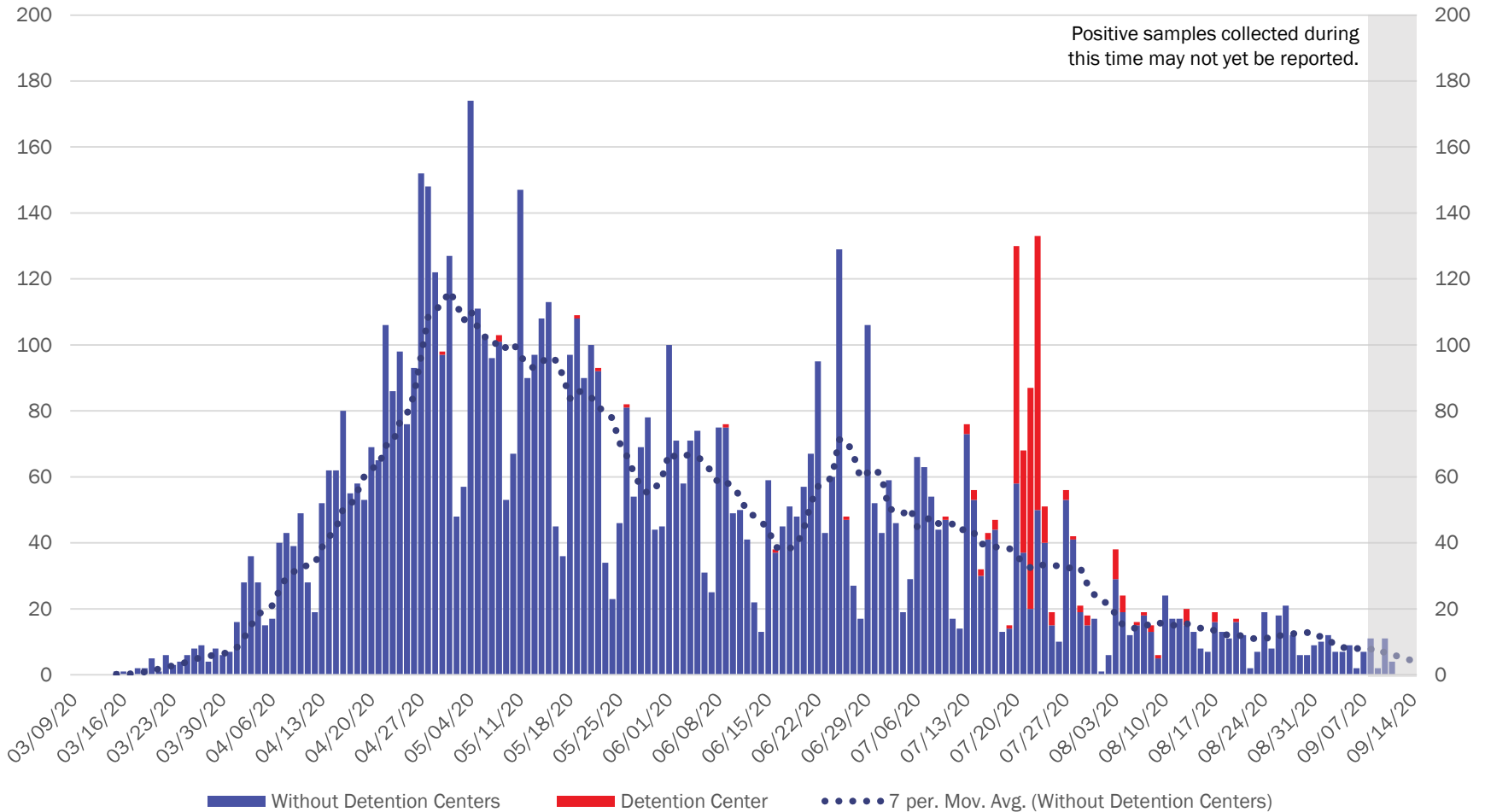
Source: Infectious Disease Epidemiology Bureau, Epidemiology and Response Division 9.15.2020, New Mexico Department of Health.



*Investing for tomorrow, delivering today.*

1190 S. St. Francis Drive • Santa Fe, NM 87505 • Phone: 505-827-2613 • Fax: 505-827-2530 • nmhealth.org

# Northwest Region Case Count by Collection Date with 7 Day Moving Average September 15, 2020



“Detention Centers” refer to federal and New Mexico Corrections Department facilities.

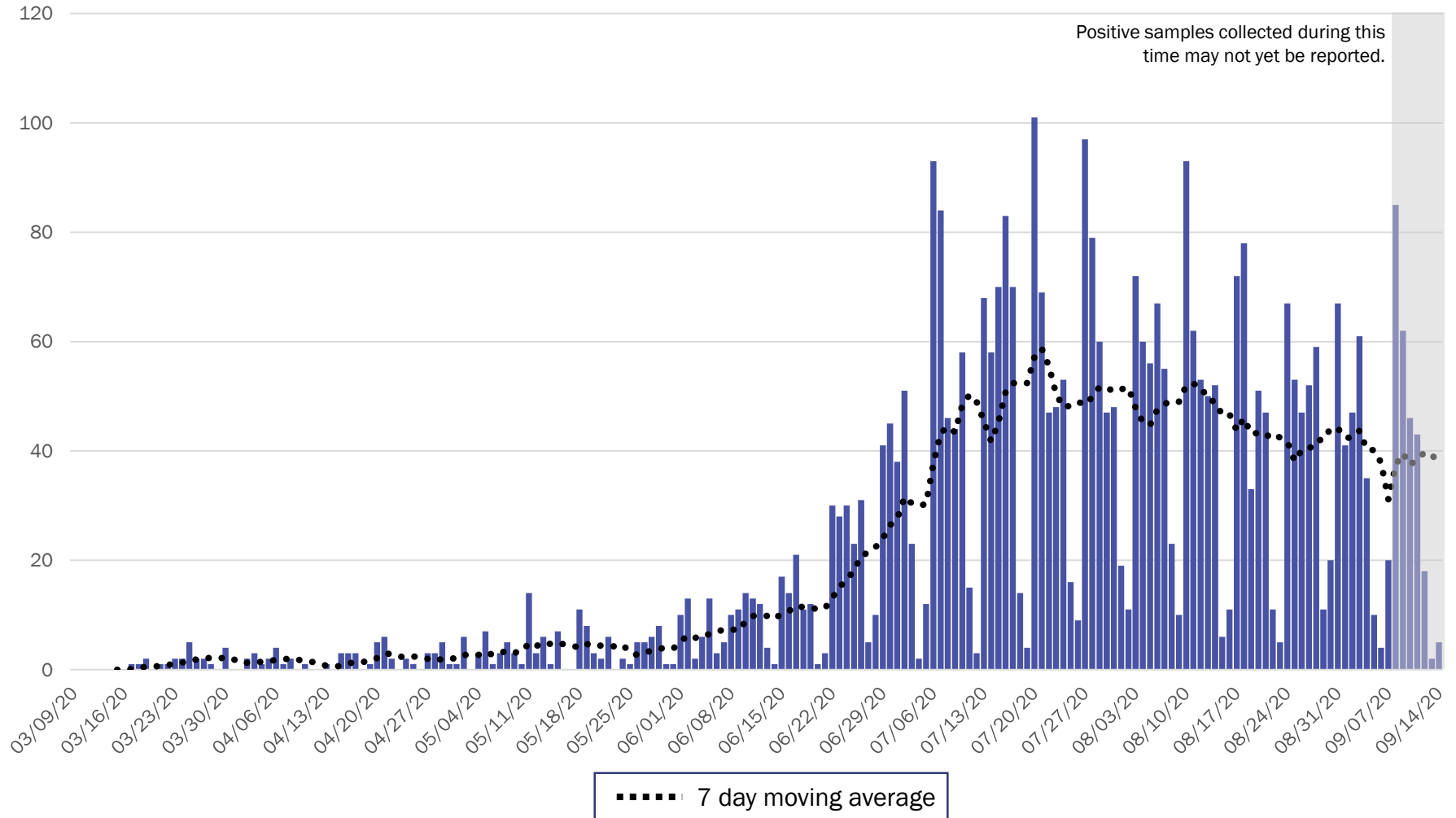
Source: Infectious Disease Epidemiology Bureau, Epidemiology and Response Division 9.15.2020, New Mexico Department of Health.



*Investing for tomorrow, delivering today.*



## Southeast Region Case Count by Collection Date with 7 Day Moving Average September 15, 2020



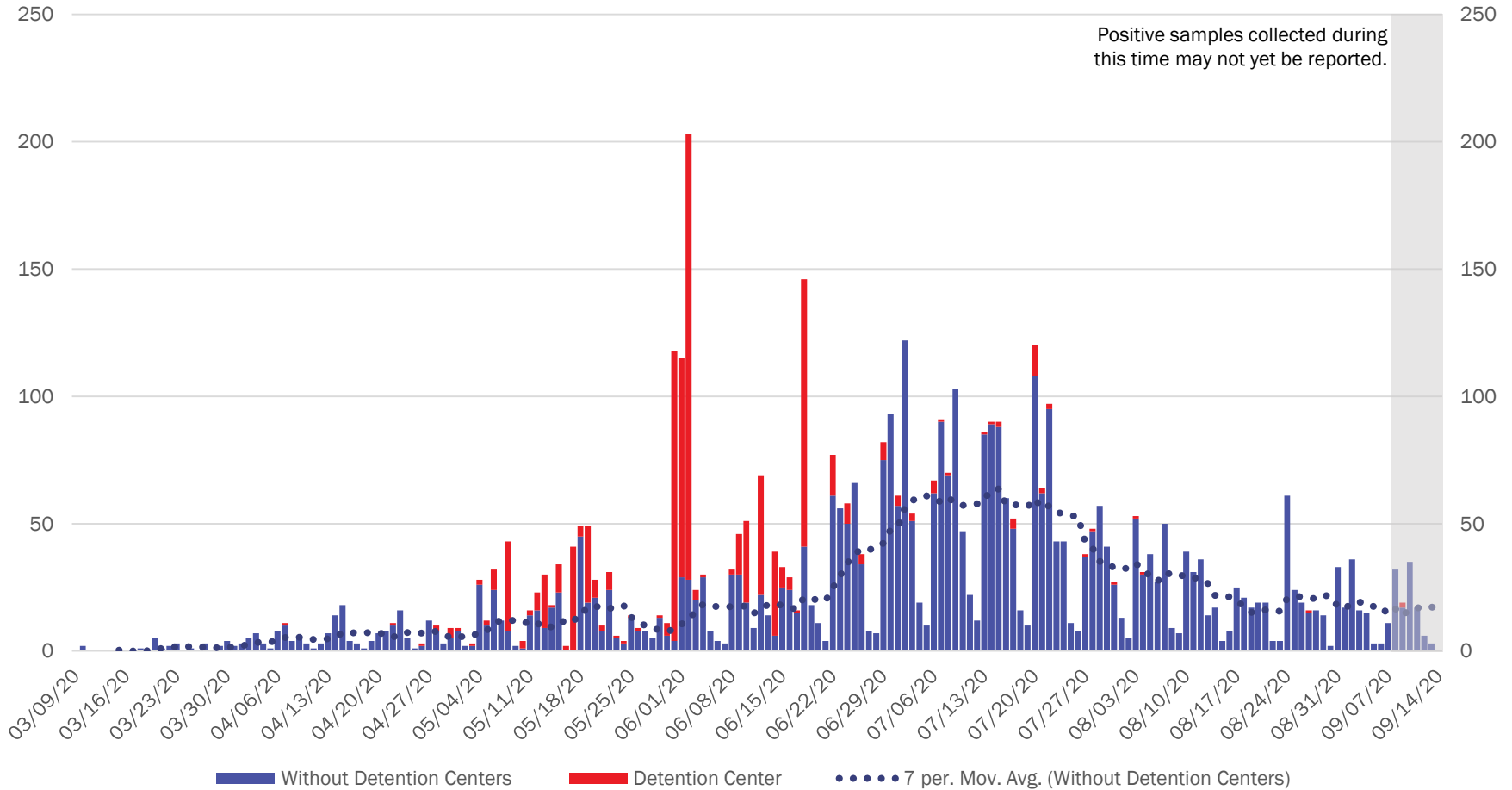
Source: Infectious Disease Epidemiology Bureau, Epidemiology and Response Division 9.15.2020, New Mexico Department of Health.



*Investing for tomorrow, delivering today.*

1190 S. St. Francis Drive • Santa Fe, NM 87505 • Phone: 505-827-2613 • Fax: 505-827-2530 • nmhealth.org

## Southwest Region Case Count by Collection Date with 7 Day Moving Average September 15, 2020



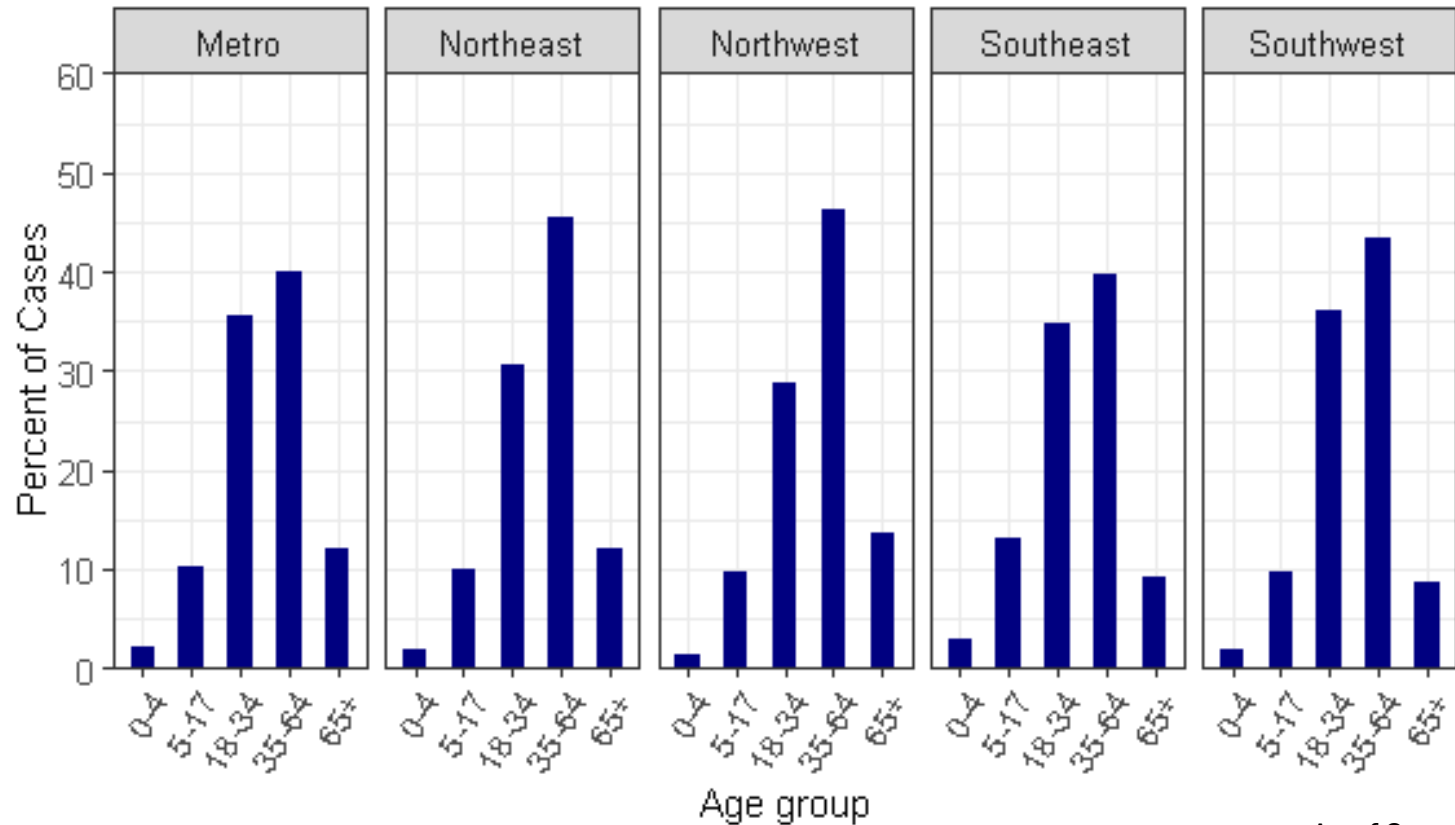
“Detention Centers” refer to federal and New Mexico Corrections Department facilities.  
 Source: Infectious Disease Epidemiology Bureau, Epidemiology and Response Division 9.15.2020, New Mexico Department of Health.



*Investing for tomorrow, delivering today.*

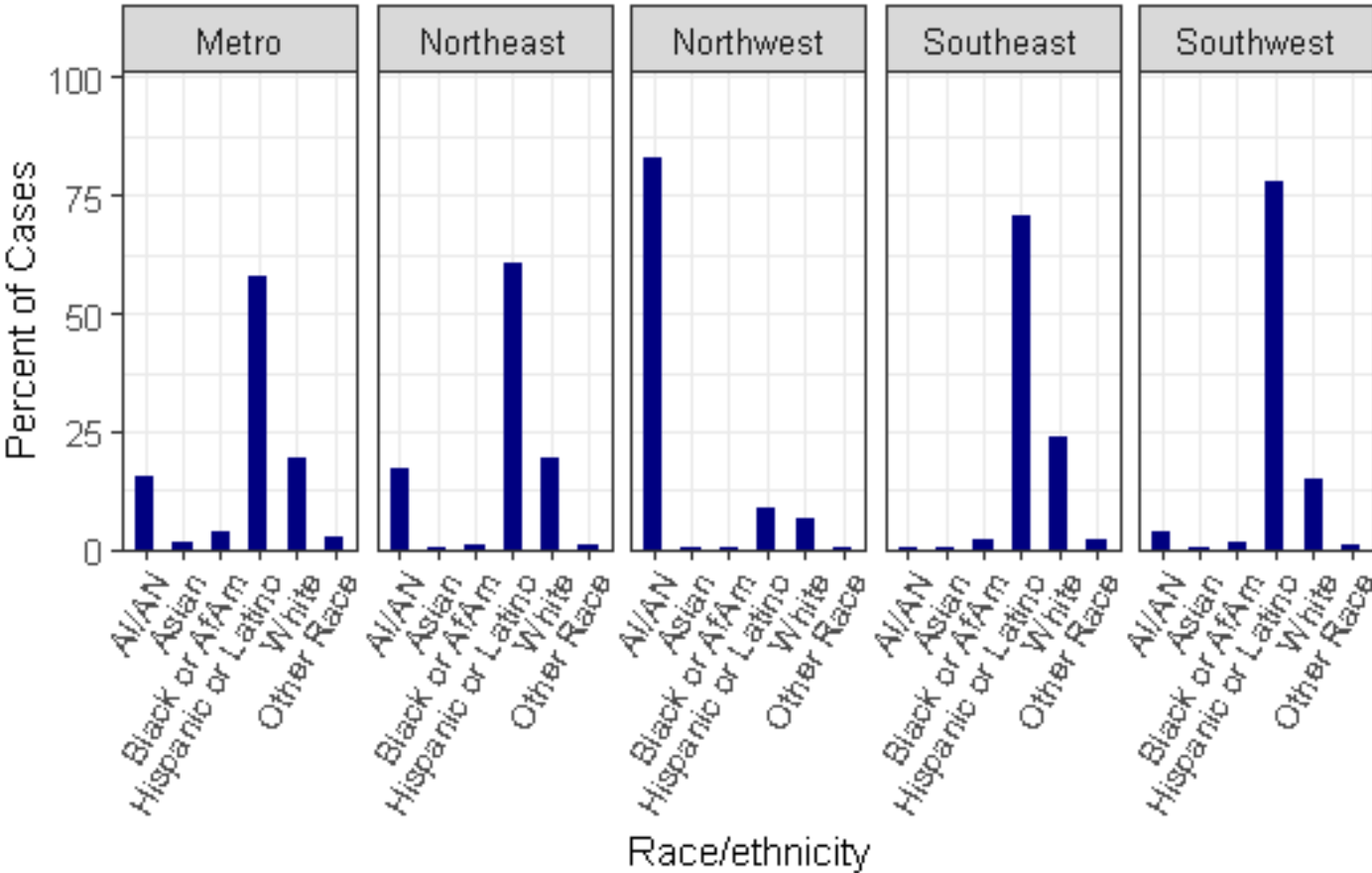


The highest percentage of cases has occurred in patients 35-64 years old followed by 18-34 years old in all five regions.



As of September 15, 2020

Except for the Northwest region, Hispanic or Latino individuals make up the largest proportion of cases.



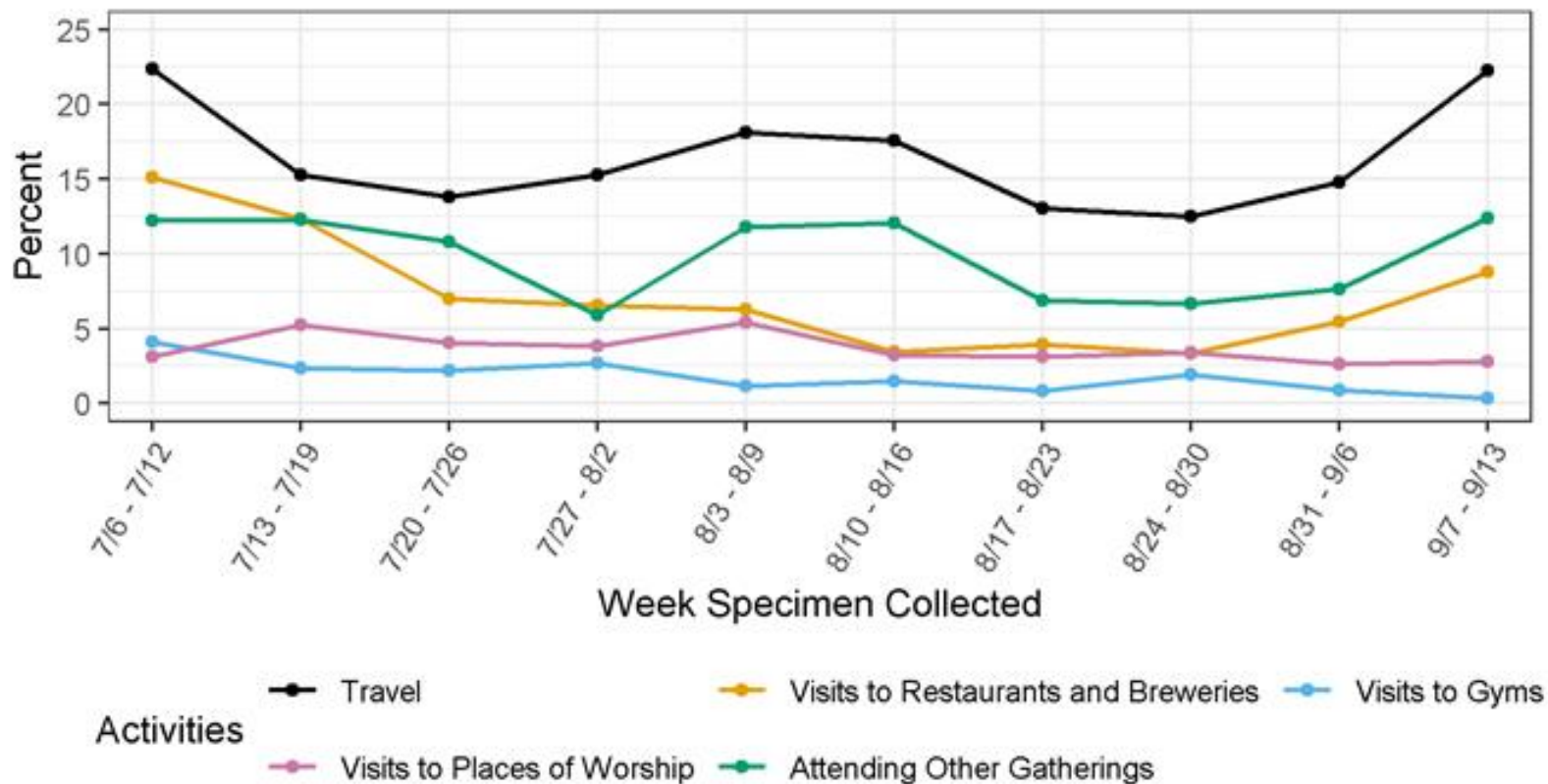
As of September 15, 2020



Investing for tomorrow, delivering today.



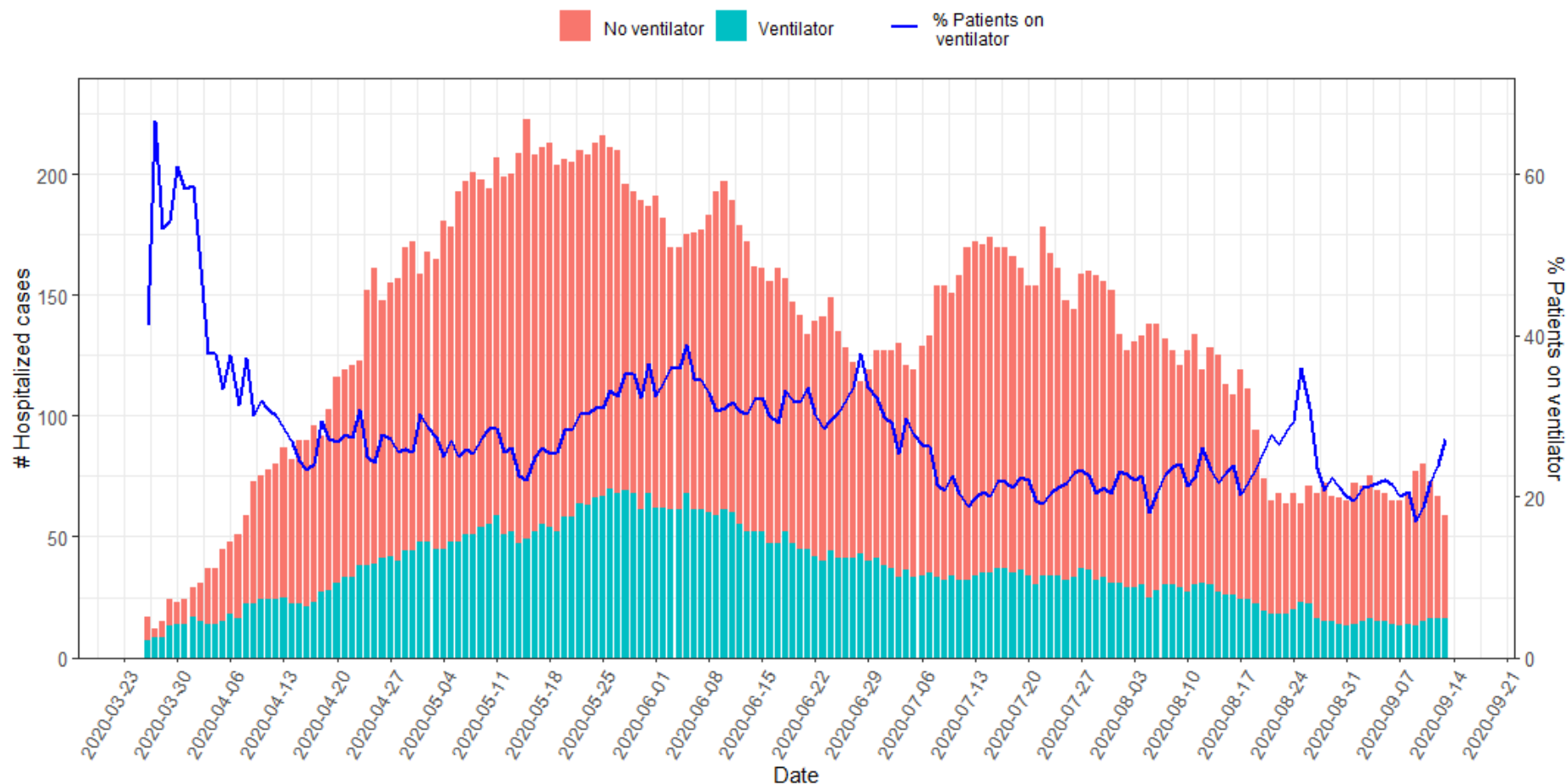
# For cases reporting activities, travel and visits to restaurants and breweries have begun to increase.



Note: Cases in correctional facilities and residents of long-term care facilities were excluded. Percentages are out of cases who were contacted and asked about their exposures.

As of September 15, 2020

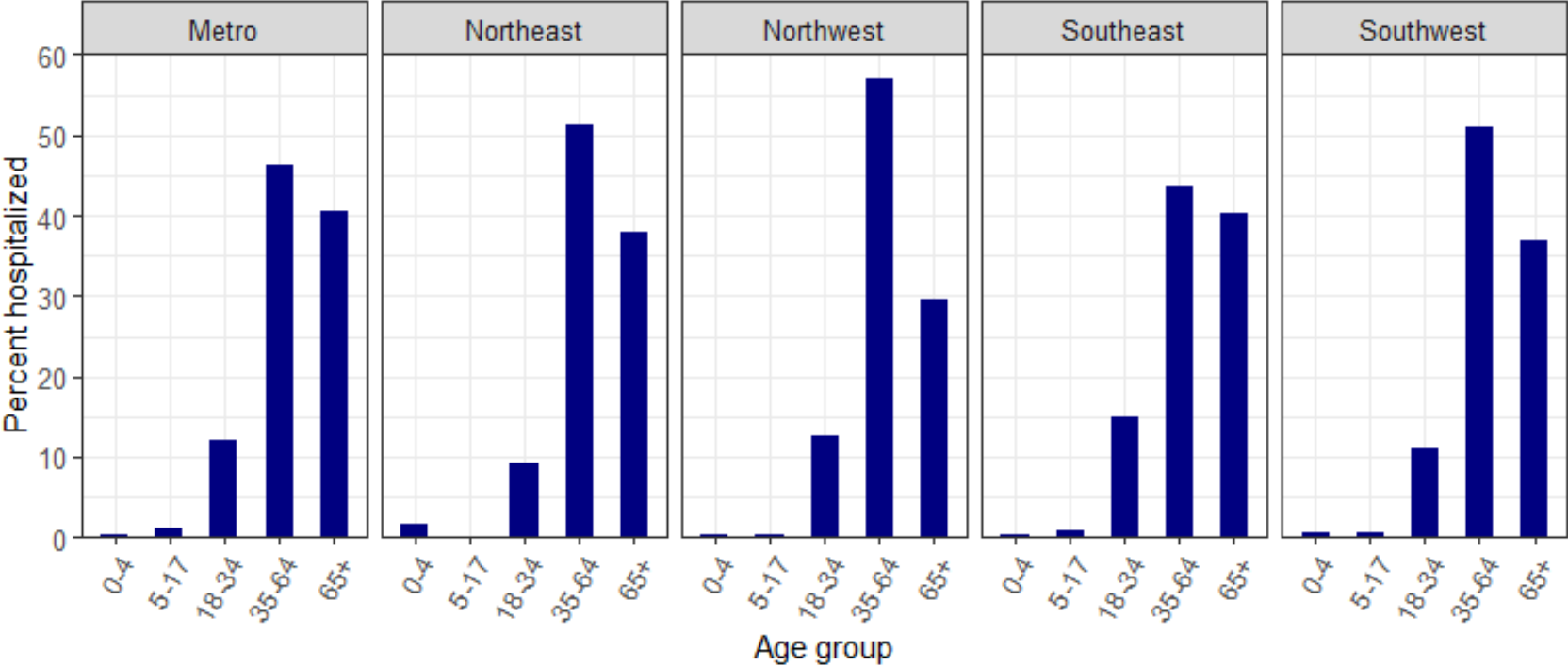
Since about mid-August, the number of hospitalizations has been below 100 cases.



As of September 13, 2020



The highest percentage of hospitalizations has occurred in patients 35-64 years old followed by 65 years and over across all regions.



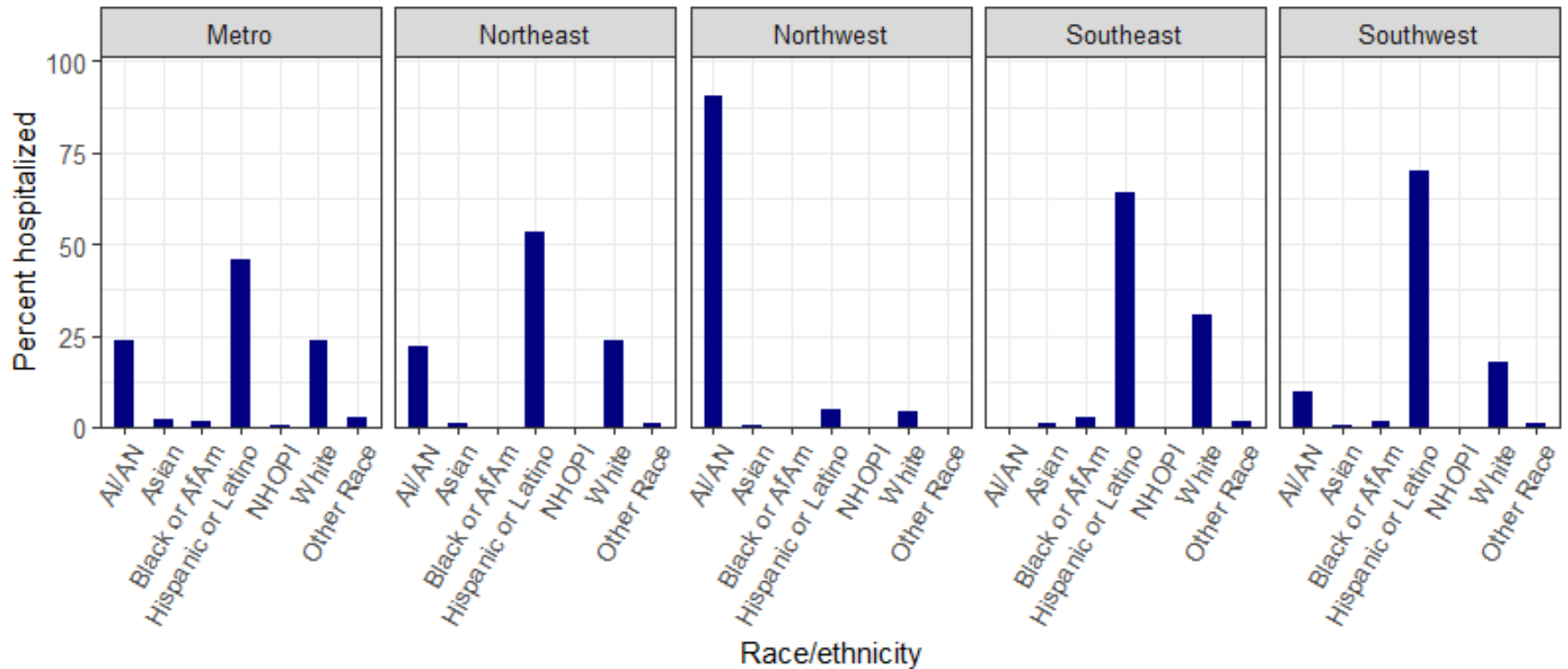
As of September 13, 2020



*Investing for tomorrow, delivering today.*

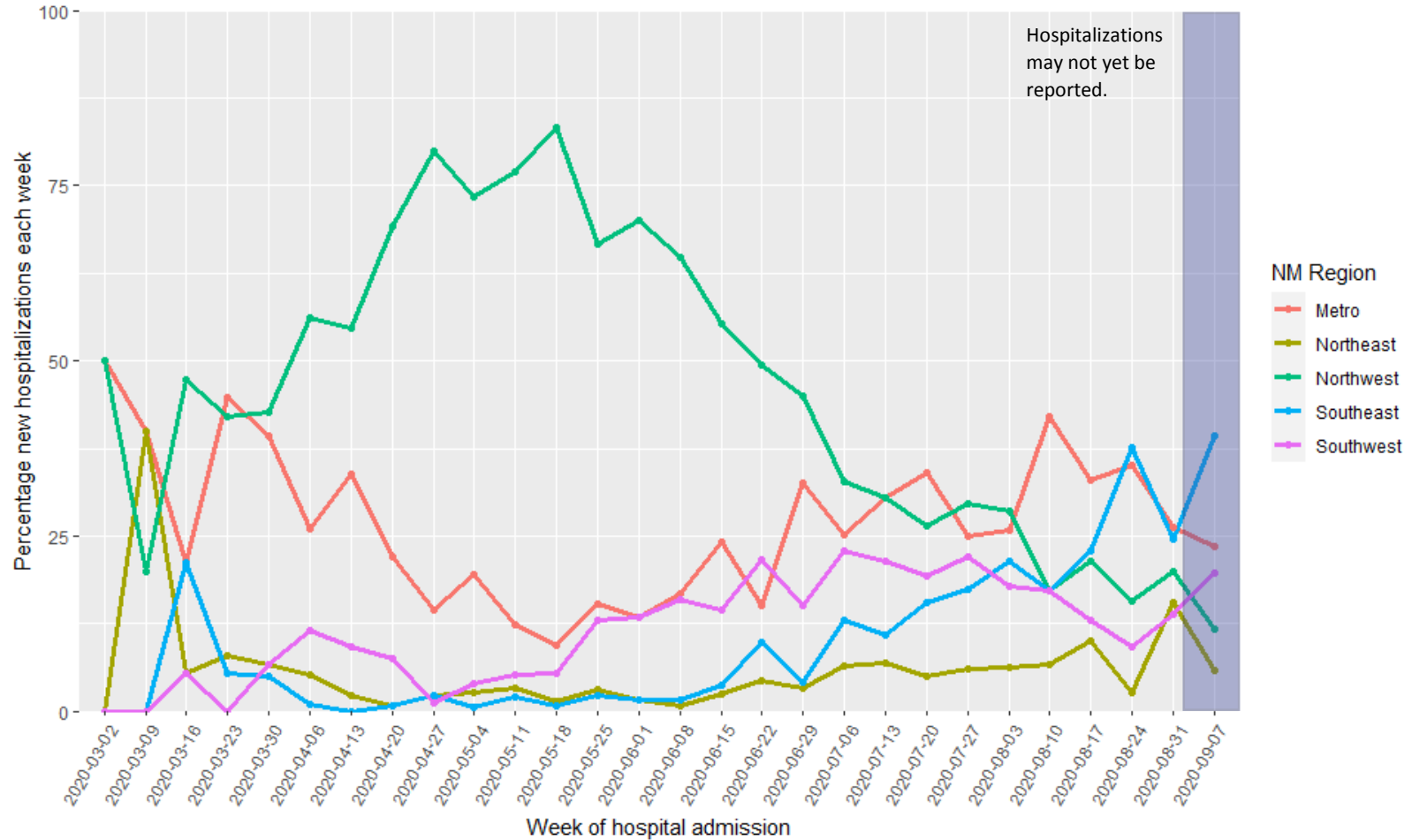


# Except for the NW Region, Hispanic or Latinos make up the highest percentage of hospitalizations



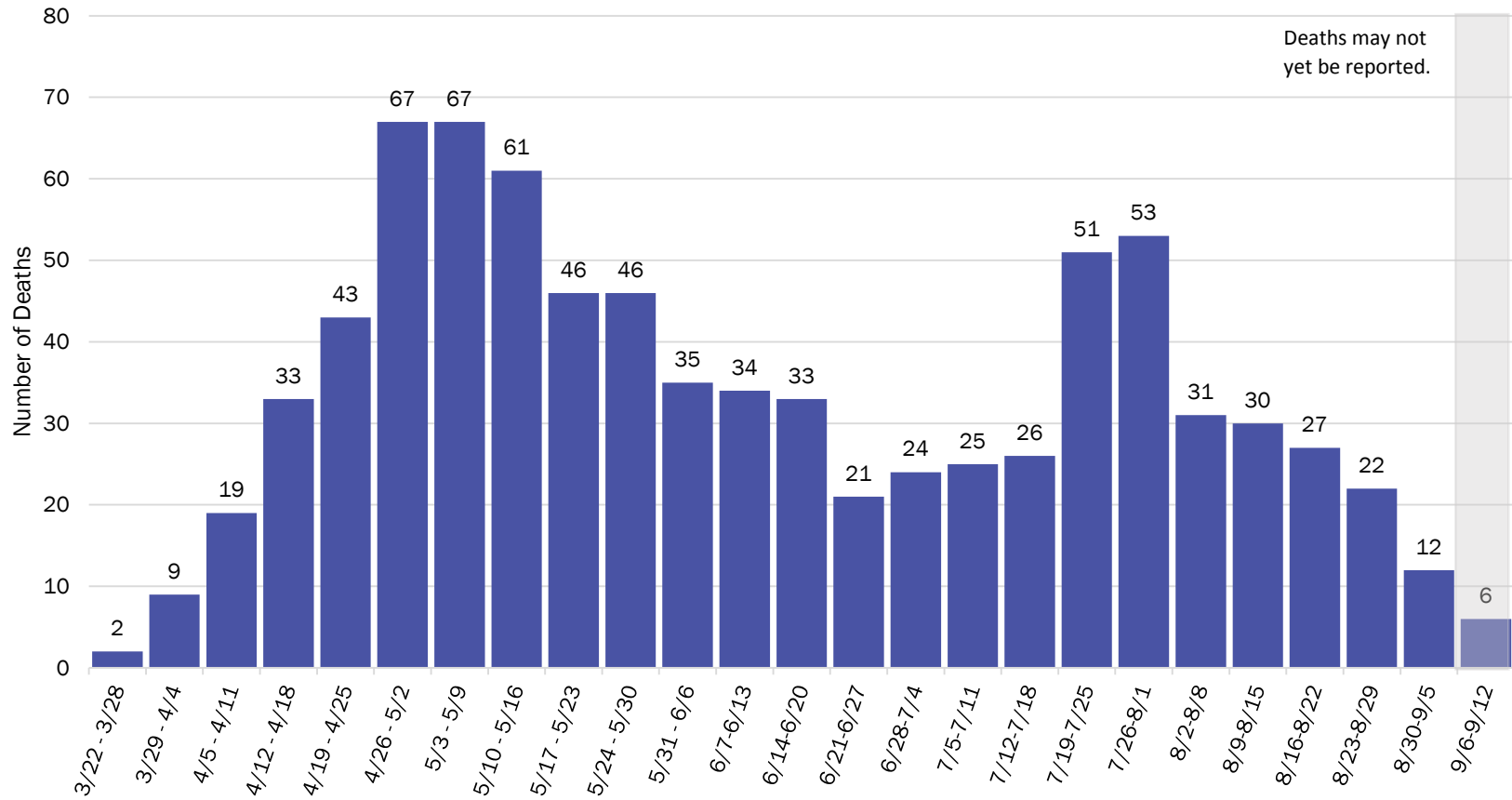
As of September 13, 2020

The SE Region made up the highest percentage of hospital admissions last week. The SW region hospital admissions may be beginning to increase.



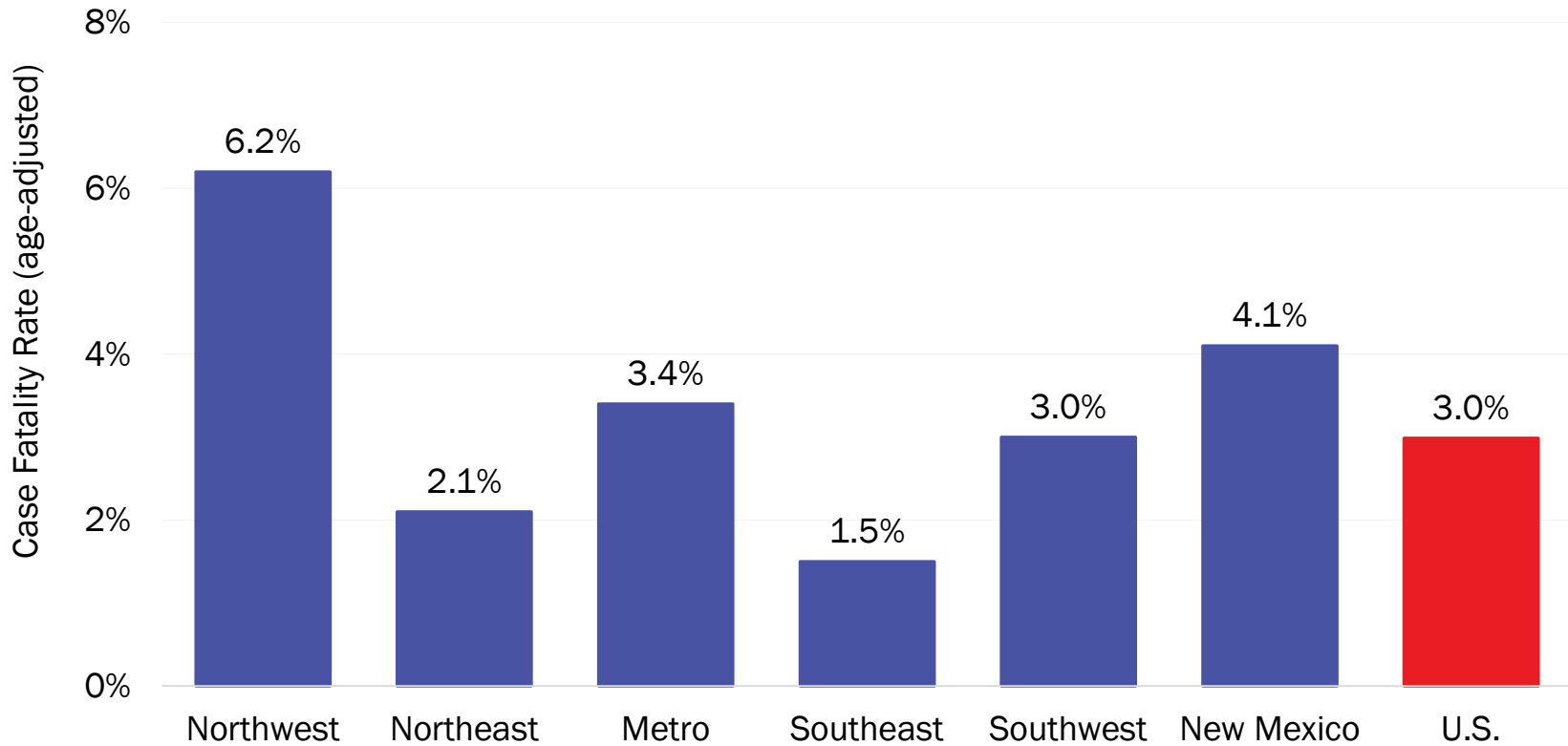
As of September 13, 2020

## COVID-19 Deaths by Week of Death, New Mexico



As of September 13, 2020

# Minimal changes in case fatality rates across regions



Note: Age-adjusted case fatality rates are adjusted to the current distribution of U.S. COVID-19 cases on 8/2. <https://www.cdc.gov/covid-data-tracker/index.html#demographics>

Source: Bureau of Vital Records and Health Statistics and Infectious Disease Epidemiology Bureau, Epidemiology and Response Division, reporting through 9.13.2020, New Mexico Department of Health.

# New Mexico Status Updates

- Case count: Statewide, daily case counts continue to decline.
- Hospitalizations: After a period of recent decline in July, hospitalizations have remained steady.
- Deaths: Deaths are declining.
- Contact tracing: The median time to quarantine for contacts identified last week was 1.2 days.

# Supplementary Slides

# Modeling Assumptions

Variable	Measured Value	Value as of 9.15.2020
R_Effective	Actual Measured Daily Value by key county	R_eff=0.9
Positive Test Multiplier	Calculated by LANL	3.4
Hospitalization and Mortality	Actual rolling value / estimated number of total infected	Medical 0.1% ICU 0.07% Vent Rate 54% of ICU Crude Case Fatality Rate 3.4%
Length of Stay	Actual rolling value / estimated number of total infected	Medical 5 days ICU 14 days ICU on Vent 14 days