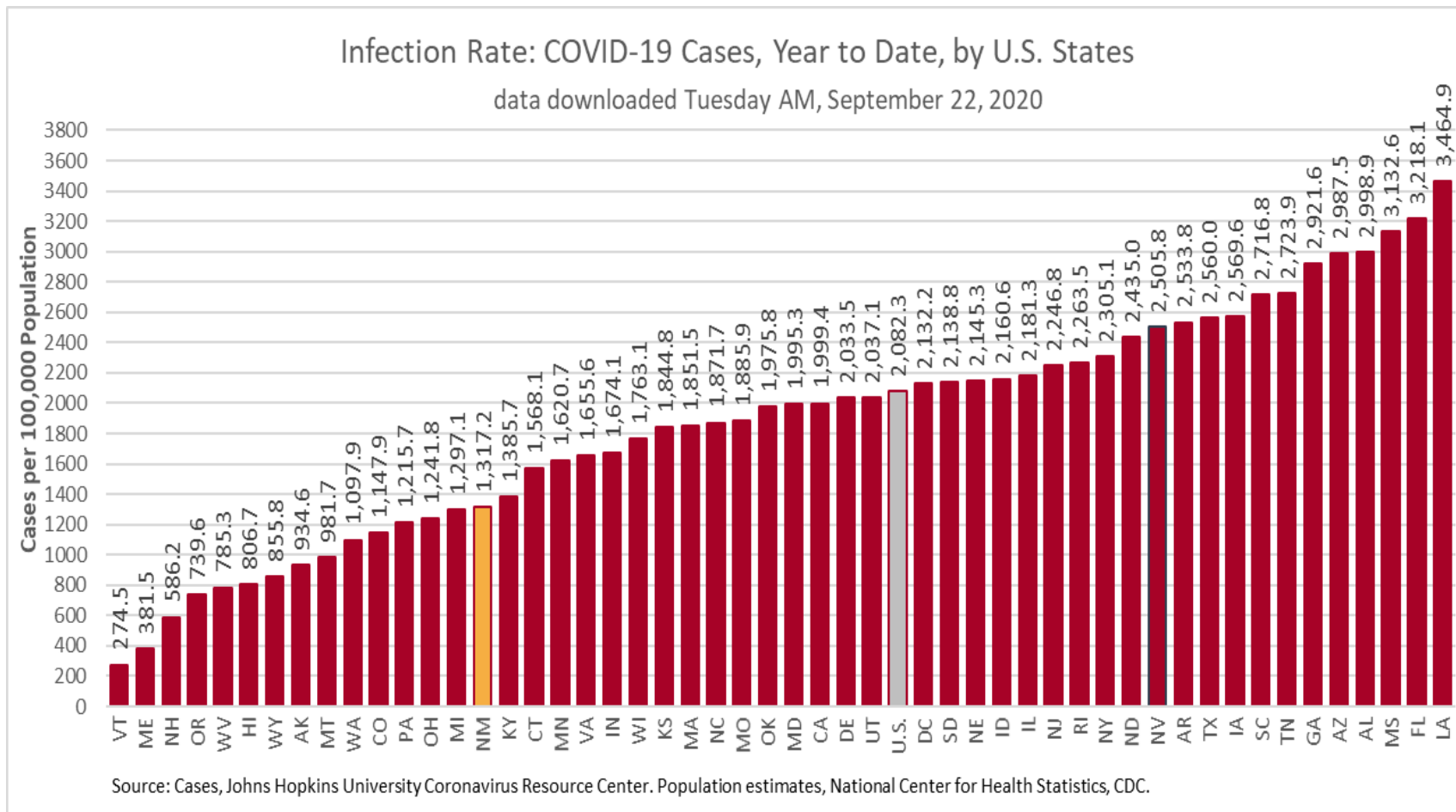


# COVID-19 in New Mexico: Epidemiologic and Modeling Update

September 22, 2020

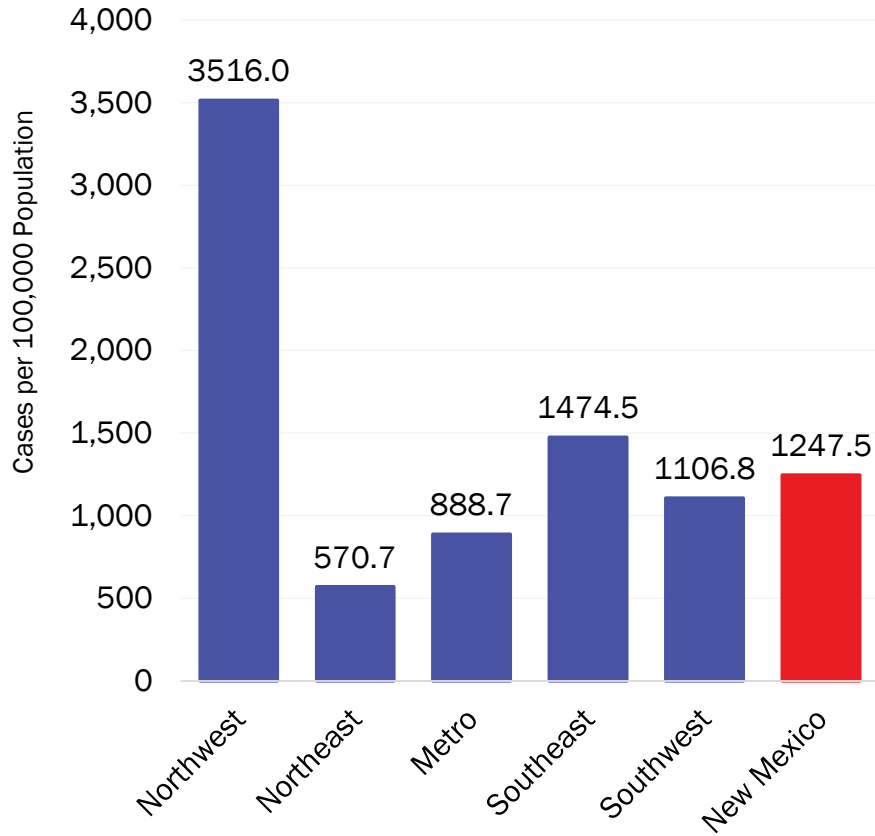
# New Mexico has the 37<sup>th</sup> highest number of cases per 100,000 population in the United States



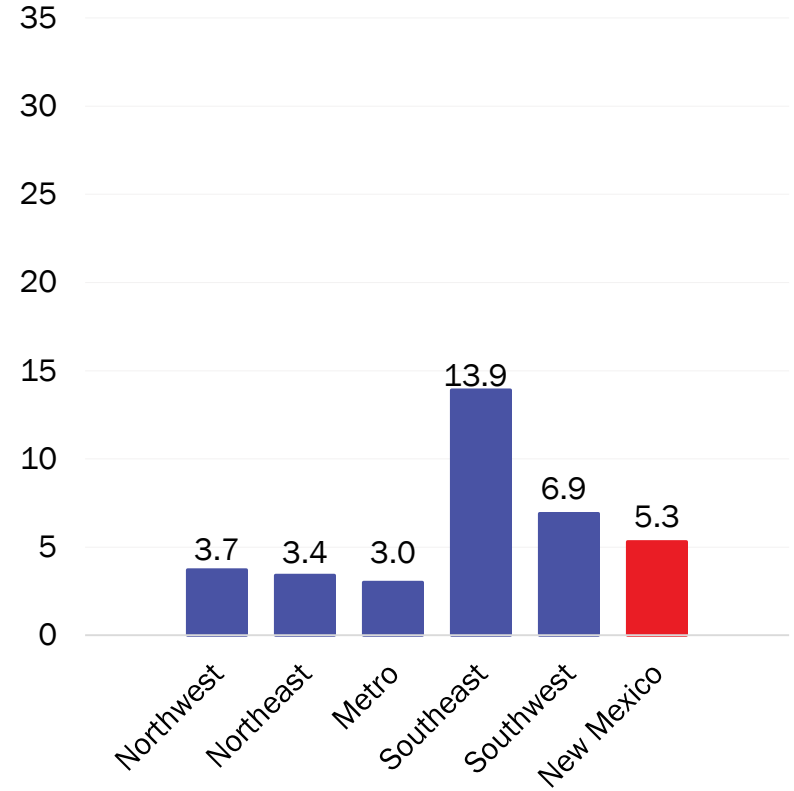
# COVID-19 prevalence per 100,000 population

\*Excludes cases among inmates in state and federal corrections and detention centers

## Year-to-Date



## New cases (Last 7 days) – September 14-20



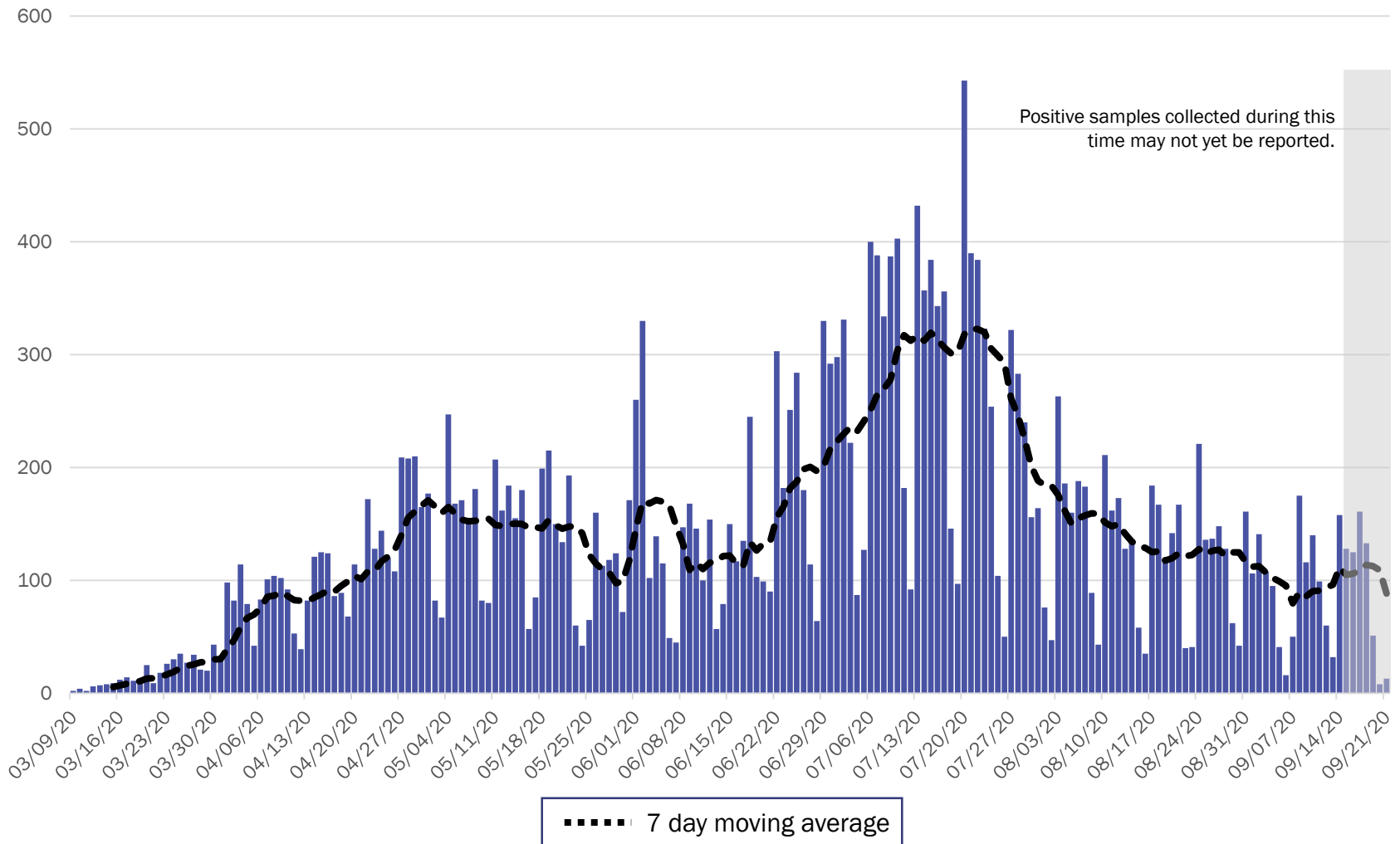
Source: Infectious Disease Epidemiology Bureau, Epidemiology and Response Division 9.20.2020, New Mexico Department of Health. Population estimates, UNM Geospatial and Population Studies Program.



*Investing for tomorrow, delivering today.*

1190 S. St. Francis Drive • Santa Fe, NM 87505 • Phone: 505-827-2613 • Fax: 505-827-2530 • nmhealth.org

# New Mexico COVID-19 Cases by Date of Specimen Collection – September 22, 2020



Source: Infectious Disease Epidemiology Bureau, Epidemiology and Response Division 9.22.2020, New Mexico Department of Health.

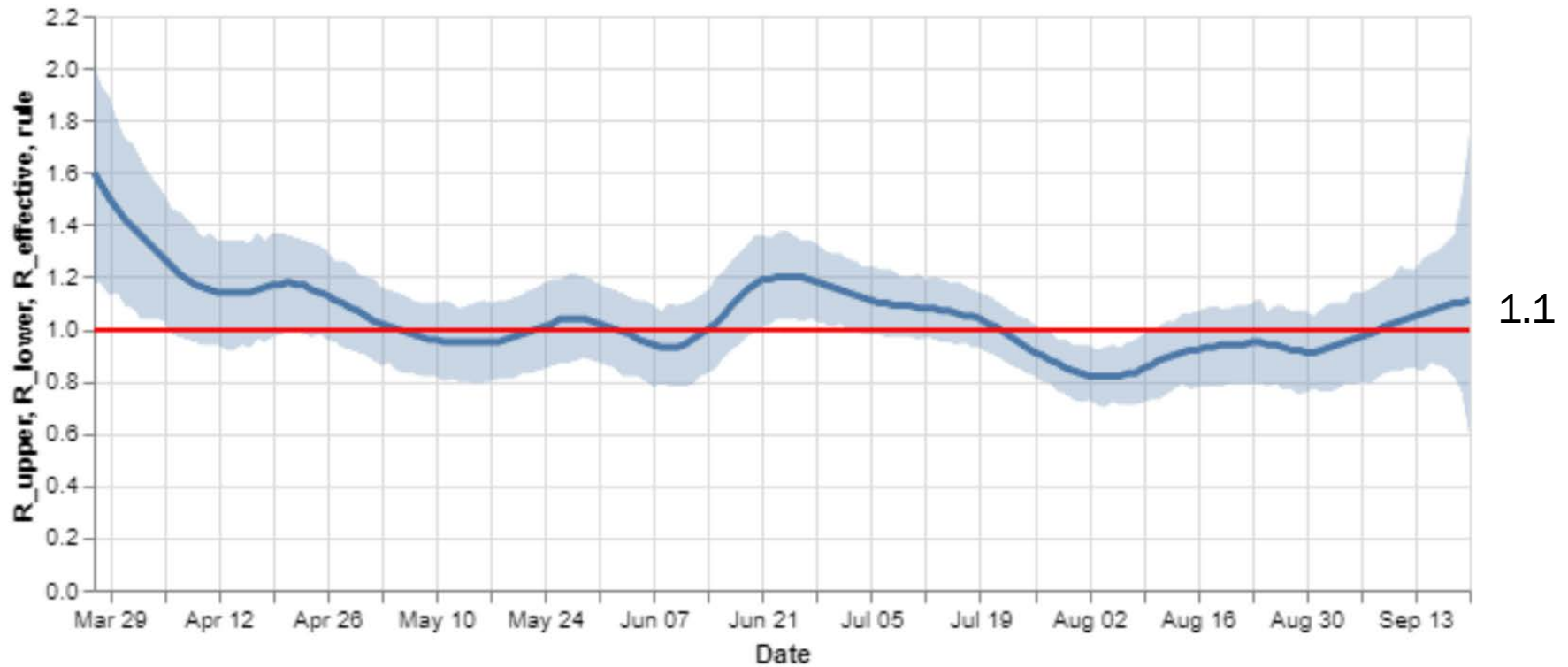


*Investing for tomorrow, delivering today.*

1190 S. St. Francis Drive • Santa Fe, NM 87505 • Phone: 505-827-2613 • Fax: 505-827-2530 • nmhealth.org

# Statewide R-effective has increased to 1.1.

## R\_effective over time, STATE



Courtesy of Presbyterian Healthcare Services – September 21, 2020.

**Key**

Low Level Endemic  
**<1.0**

Approaching Low Level Endemic  
**1.0-1.05**

Requiring further mitigation  
**>1.05**

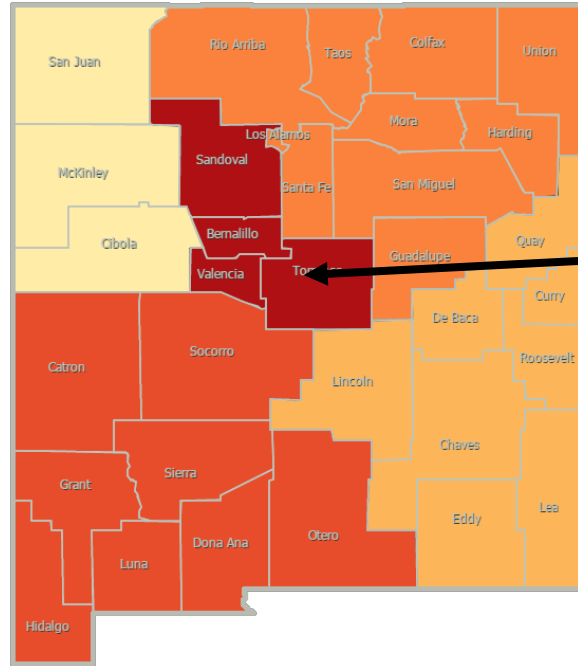
**Northwest**  
**R\_effective 1.0 ↑**

**Northeast**  
**R\_effective 1.1 ↑**

**Metro**  
**R\_effective 1.2 ↑**

**Southwest**  
**R\_effective 1.1 ↑**

**Southeast**  
**R\_effective 1.1 ↑**



As of September 15, 2020

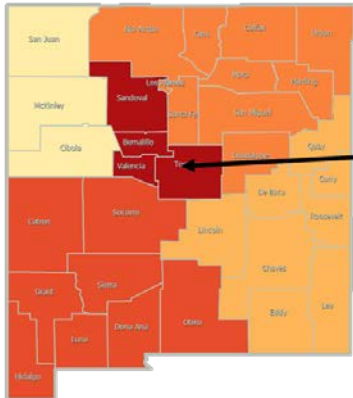
**Northwest**  
**R\_effective 0.7 ↓**

**Northeast**  
**R\_effective 1.0 ↑**

**Metro**  
**R\_effective 0.8 ↑**

**Southwest**  
**R\_effective 0.9 ↓**

**Southeast**  
**R\_effective 1.0 ↑**

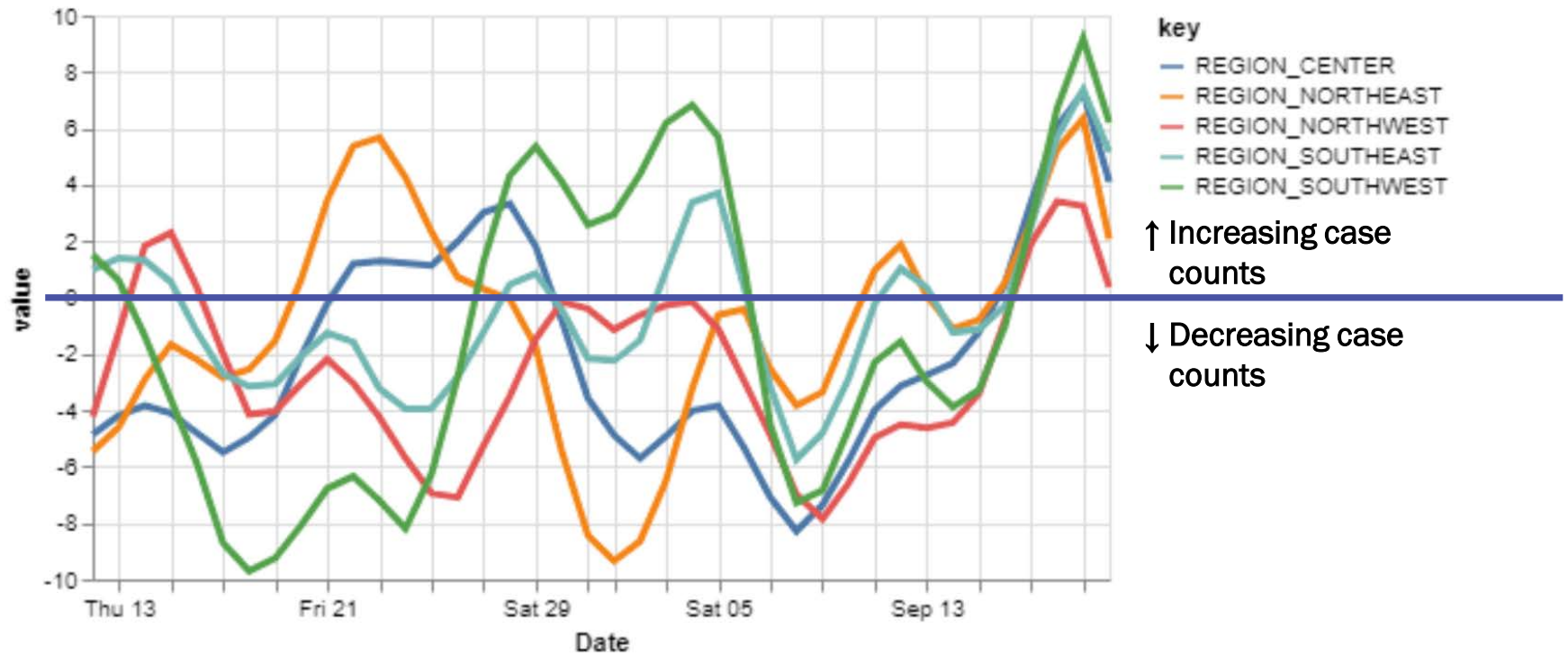


Region	R-effective	95% Confidence Interval
State	1.1	[0.6, 1.8]
Metro	1.2	[0.0, 2.5]
Northeast	1.1	[0.0, 3.7]
Northwest	1.0	[0.0, 4.5]
Southeast	1.1	[0.2, 2.2]
Southwest	1.1	[0.0, 2.8]

Courtesy of Presbyterian Healthcare Services – September 21, 2020.

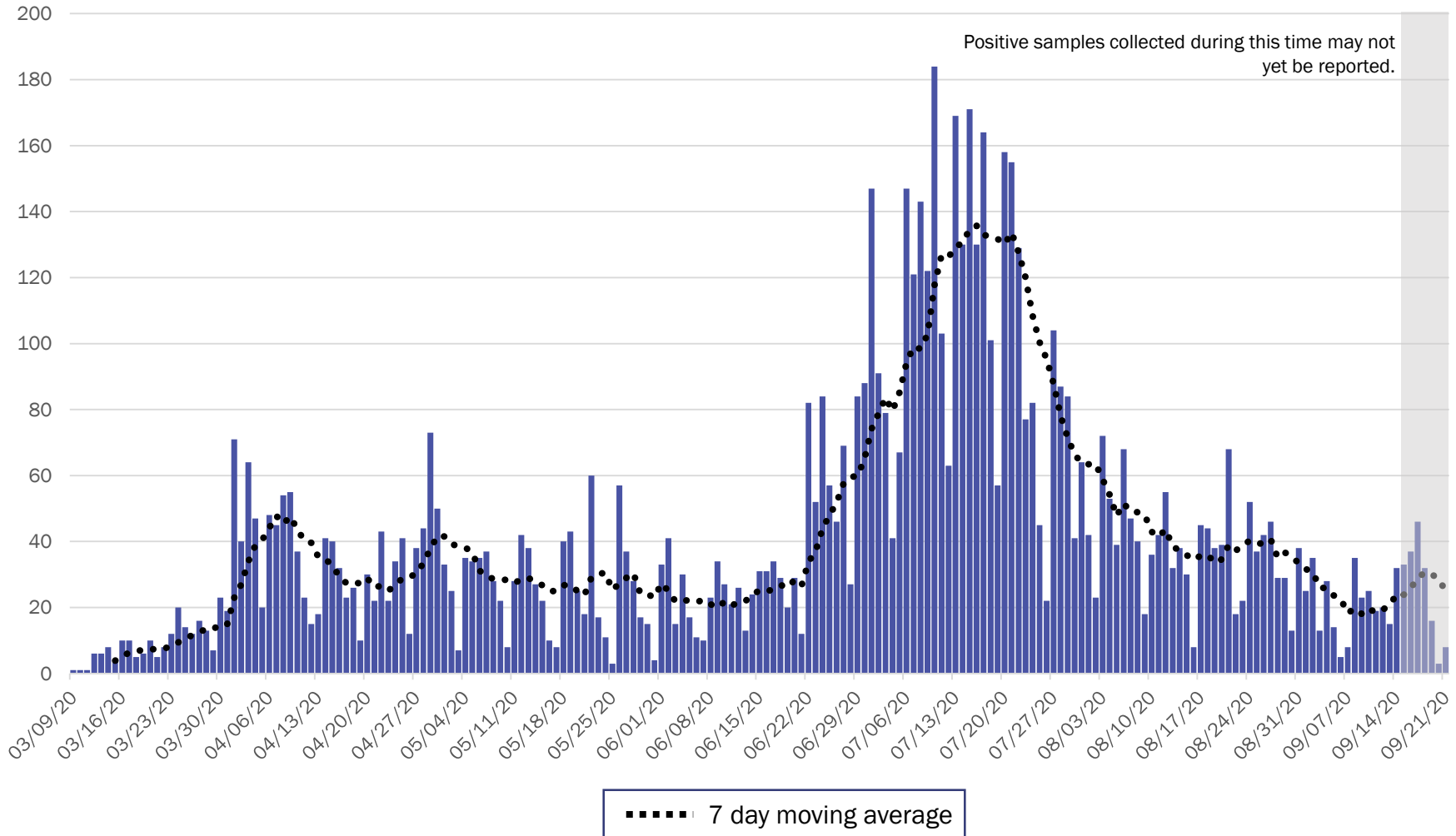
# All regions have increasing case counts relative to the past 14 day period.

## 14-day relative growth rate (%), Regions



Courtesy of Presbyterian Healthcare Services – September 21, 2020.

# Metro Region Case Count by Collection Date with 7 Day Moving Average September 22, 2020



Source: Infectious Disease Epidemiology Bureau, Epidemiology and Response Division 9.22.2020, New Mexico Department of Health.

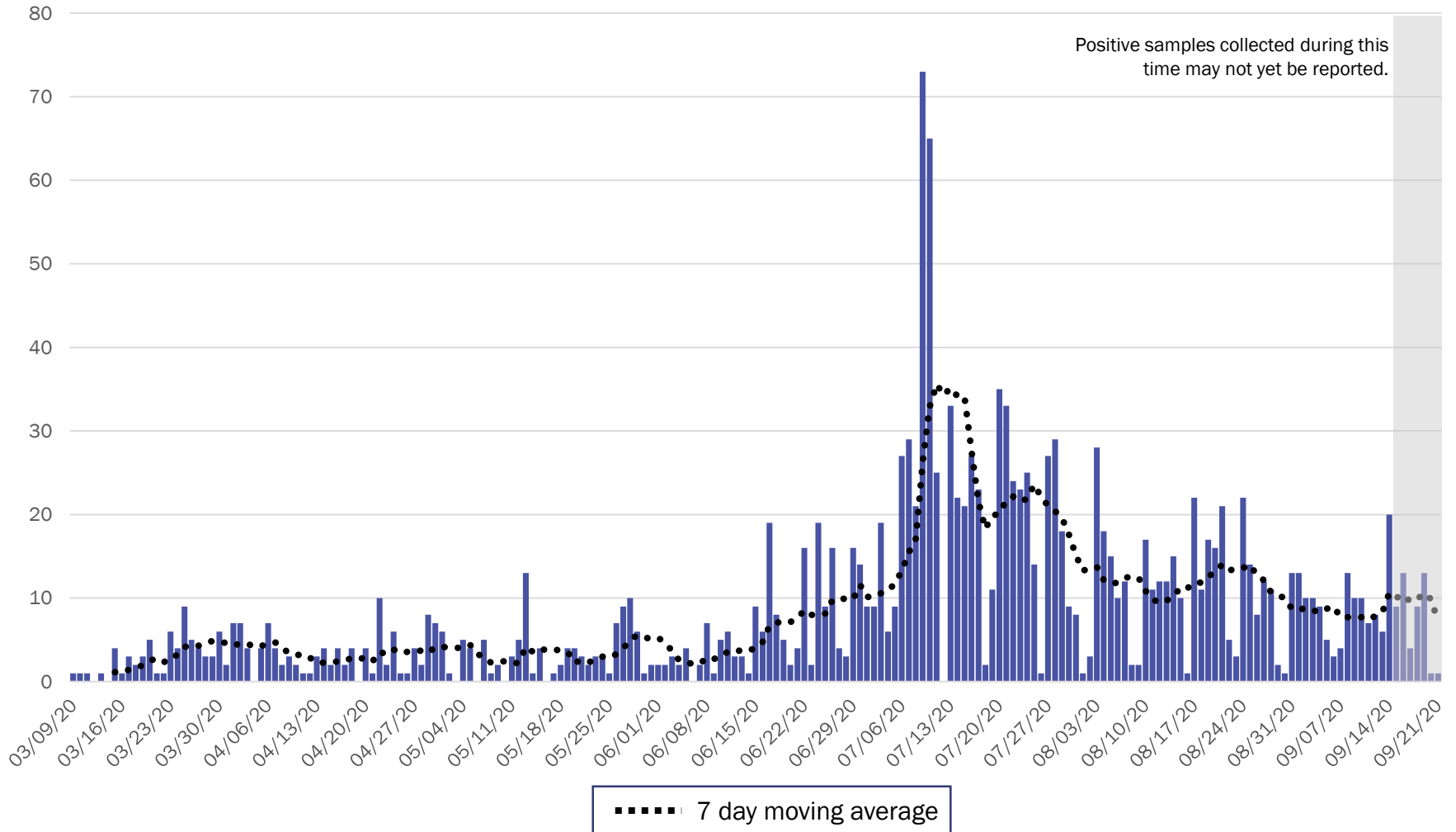


*Investing for tomorrow, delivering today.*





# Northeast Region Case Count by Collection Date with 7 Day Moving Average September 22, 2020

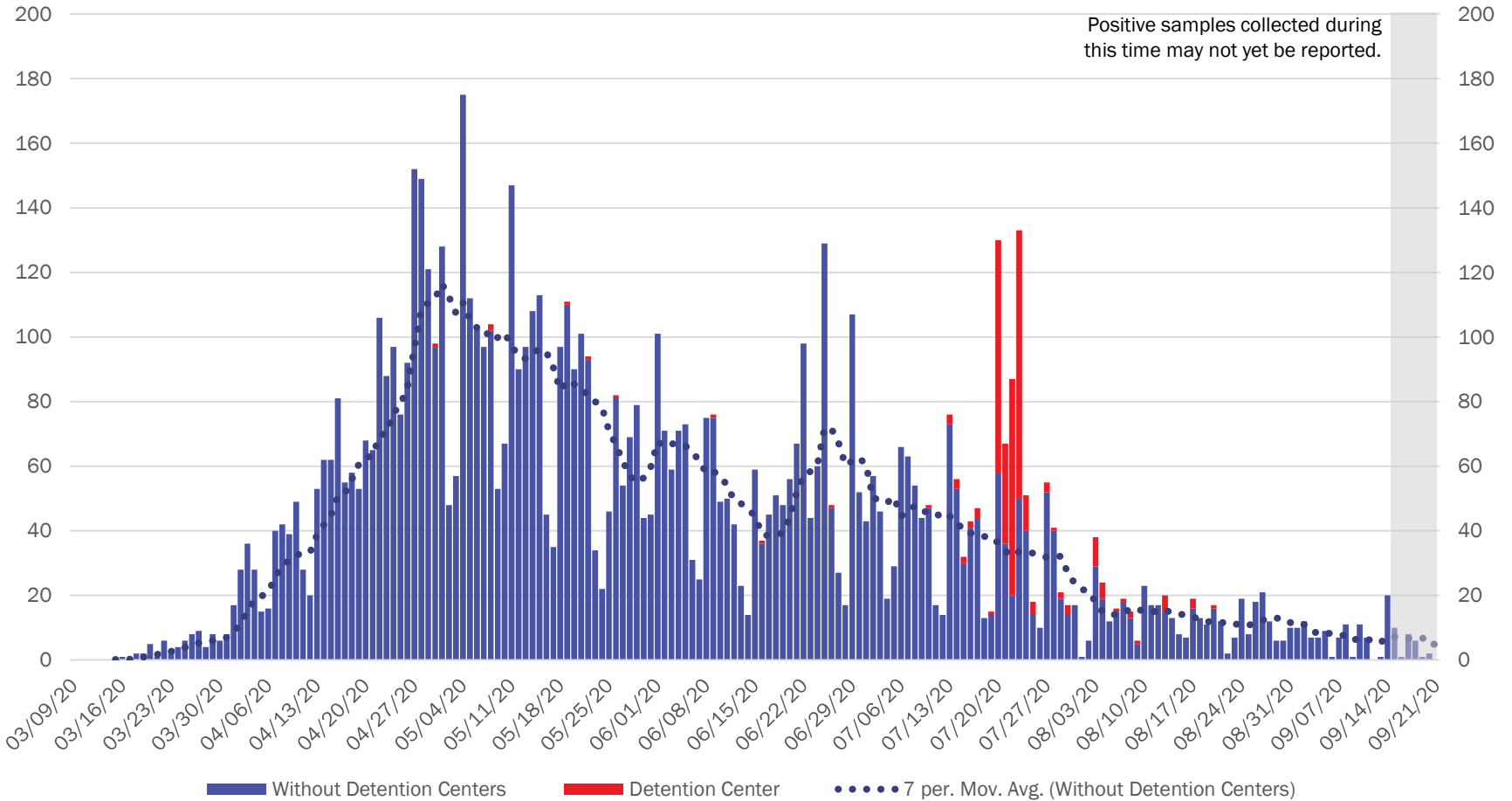


Source: Infectious Disease Epidemiology Bureau, Epidemiology and Response Division 9.22.2020, New Mexico Department of Health.



*Investing for tomorrow, delivering today.*

# Northwest Region Case Count by Collection Date with 7 Day Moving Average September 22, 2020



“Detention Centers” refer to federal and New Mexico Corrections Department facilities.

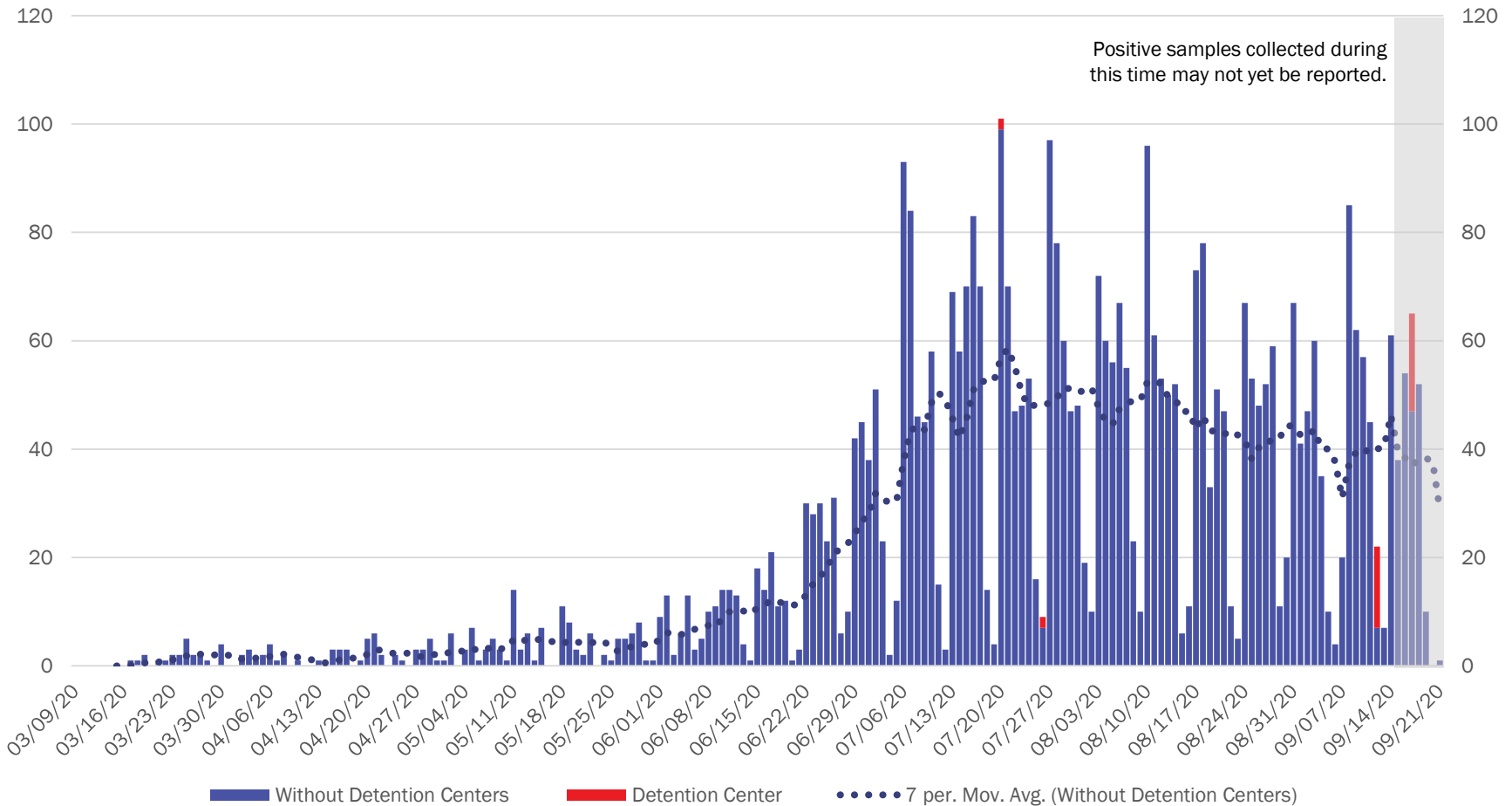
Source: Infectious Disease Epidemiology Bureau, Epidemiology and Response Division 9.22.2020, New Mexico Department of Health.



*Investing for tomorrow, delivering today.*



## Southeast Region Case Count by Collection Date with 7 Day Moving Average September 22, 2020



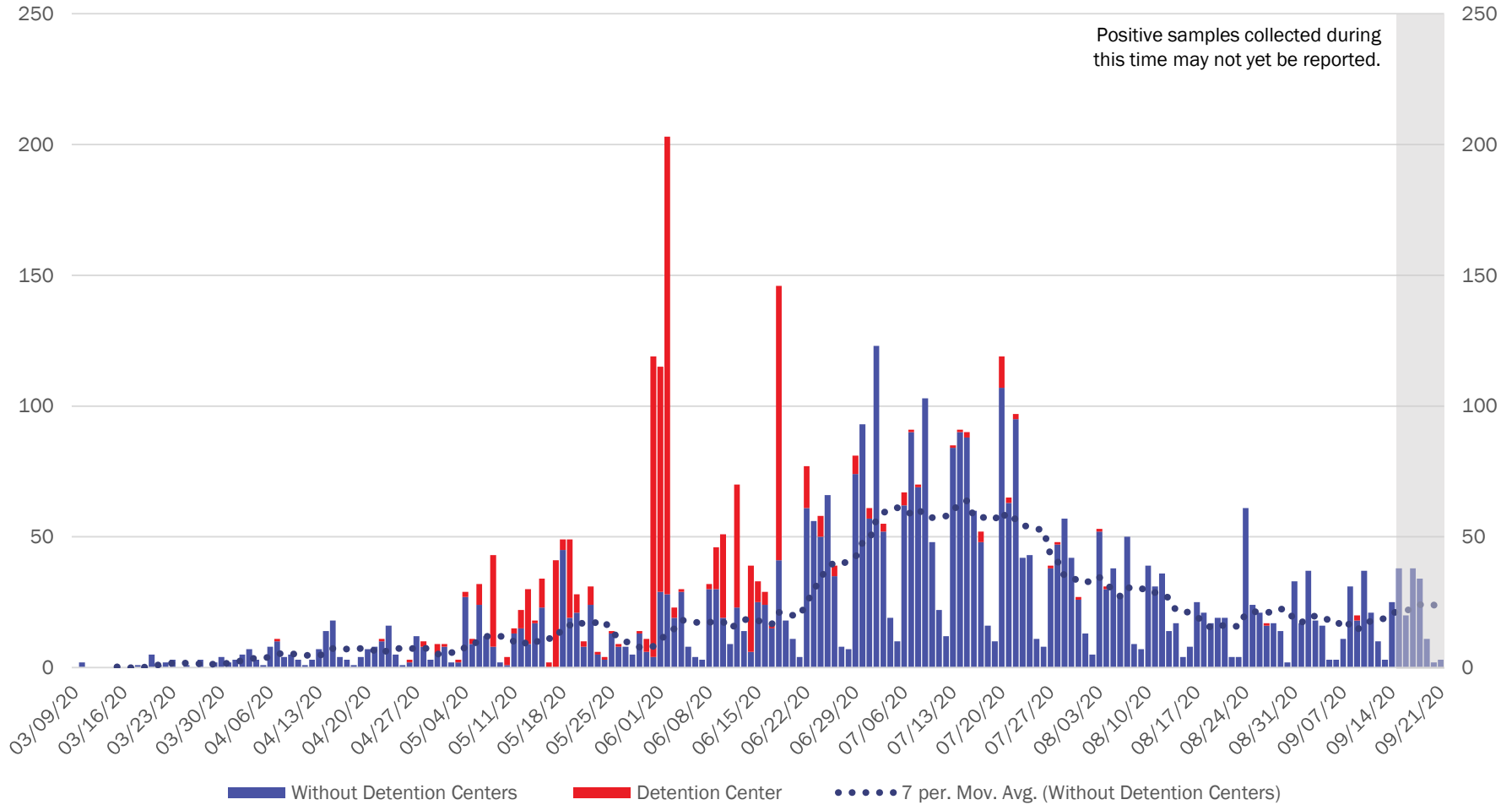
“Detention Centers” refer to federal and New Mexico Corrections Department facilities.  
 Source: Infectious Disease Epidemiology Bureau, Epidemiology and Response Division 9.22.2020, New Mexico Department of Health.



*Investing for tomorrow, delivering today.*



# Southwest Region Case Count by Collection Date with 7 Day Moving Average September 22, 2020



“Detention Centers” refer to federal and New Mexico Corrections Department facilities.

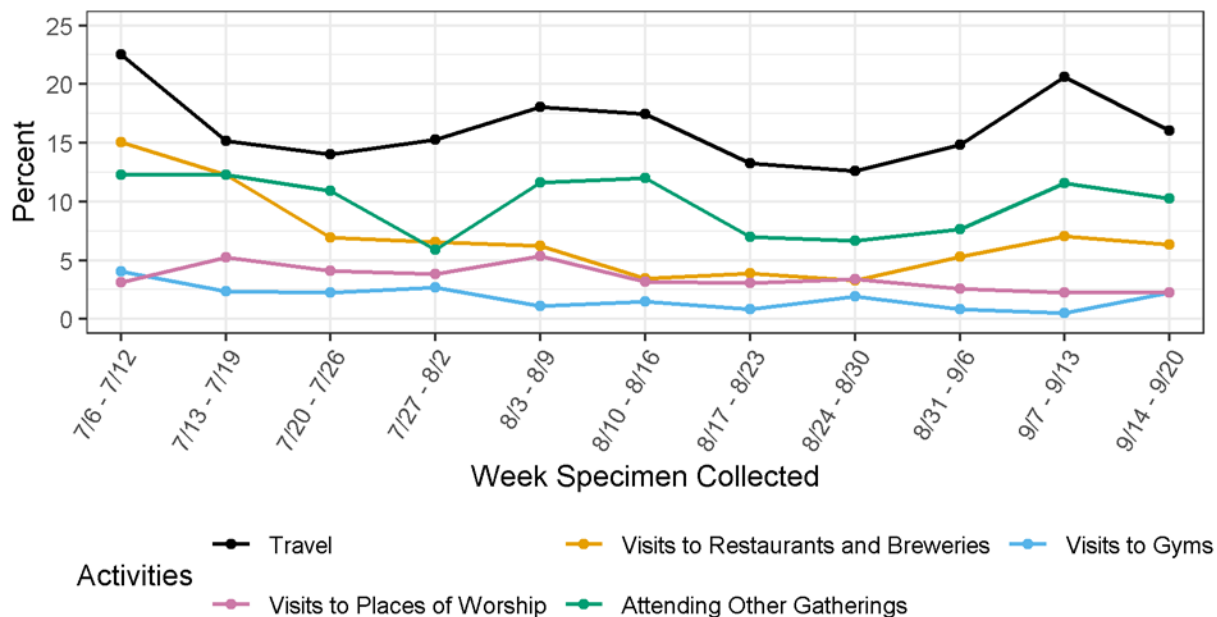
Source: Infectious Disease Epidemiology Bureau, Epidemiology and Response Division 9.22.2020, New Mexico Department of Health.



*Investing for tomorrow, delivering today.*

1190 S. St. Francis Drive • Santa Fe, NM 87505 • Phone: 505-827-2613 • Fax: 505-827-2530 • nmhealth.org

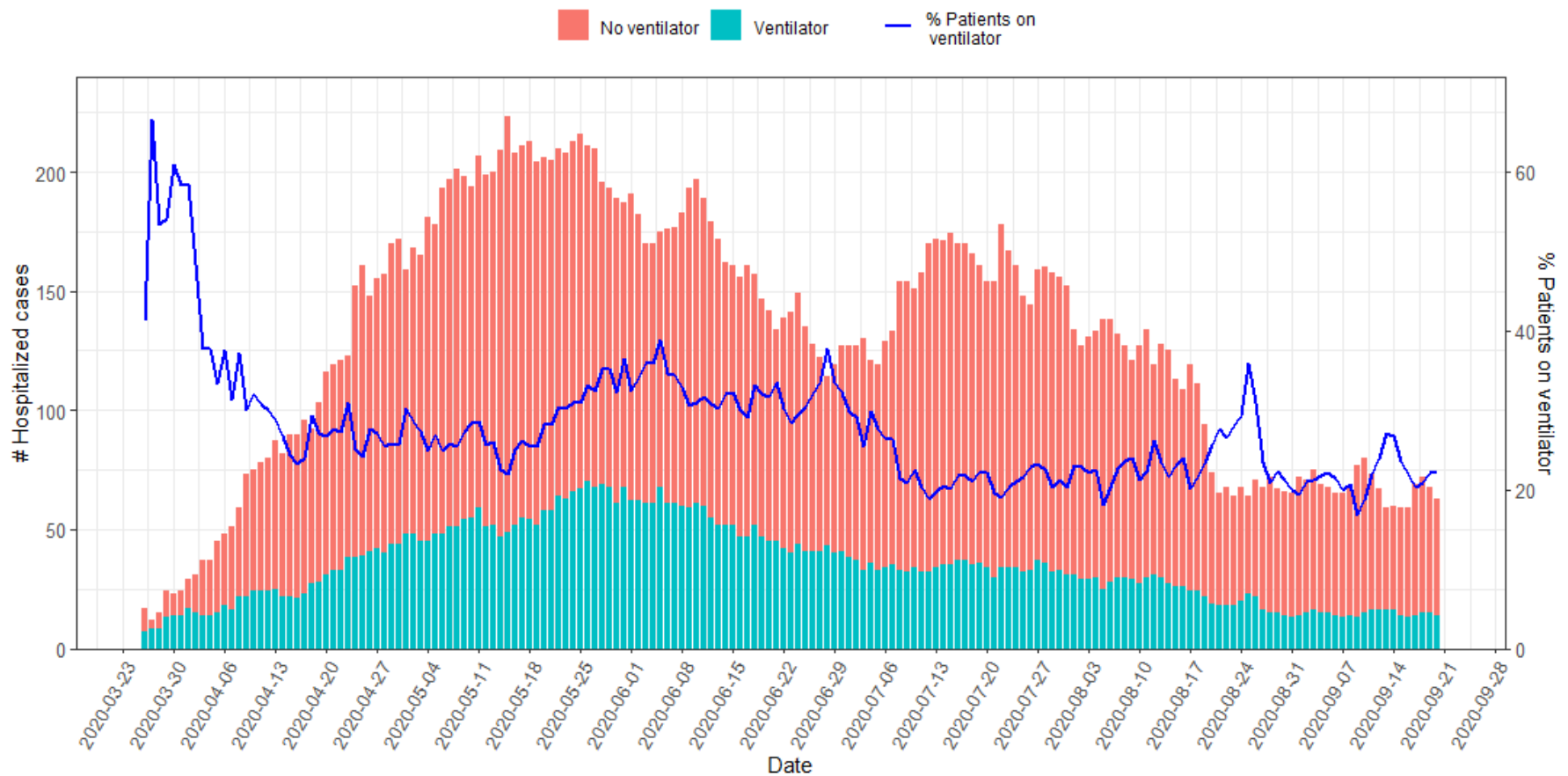
# For cases reporting activities, travel and visits to restaurants and breweries may be beginning to decrease.



Note: Cases in correctional facilities and residents of long-term care facilities were excluded. Percentages are out of cases who were contacted and asked about their exposures.

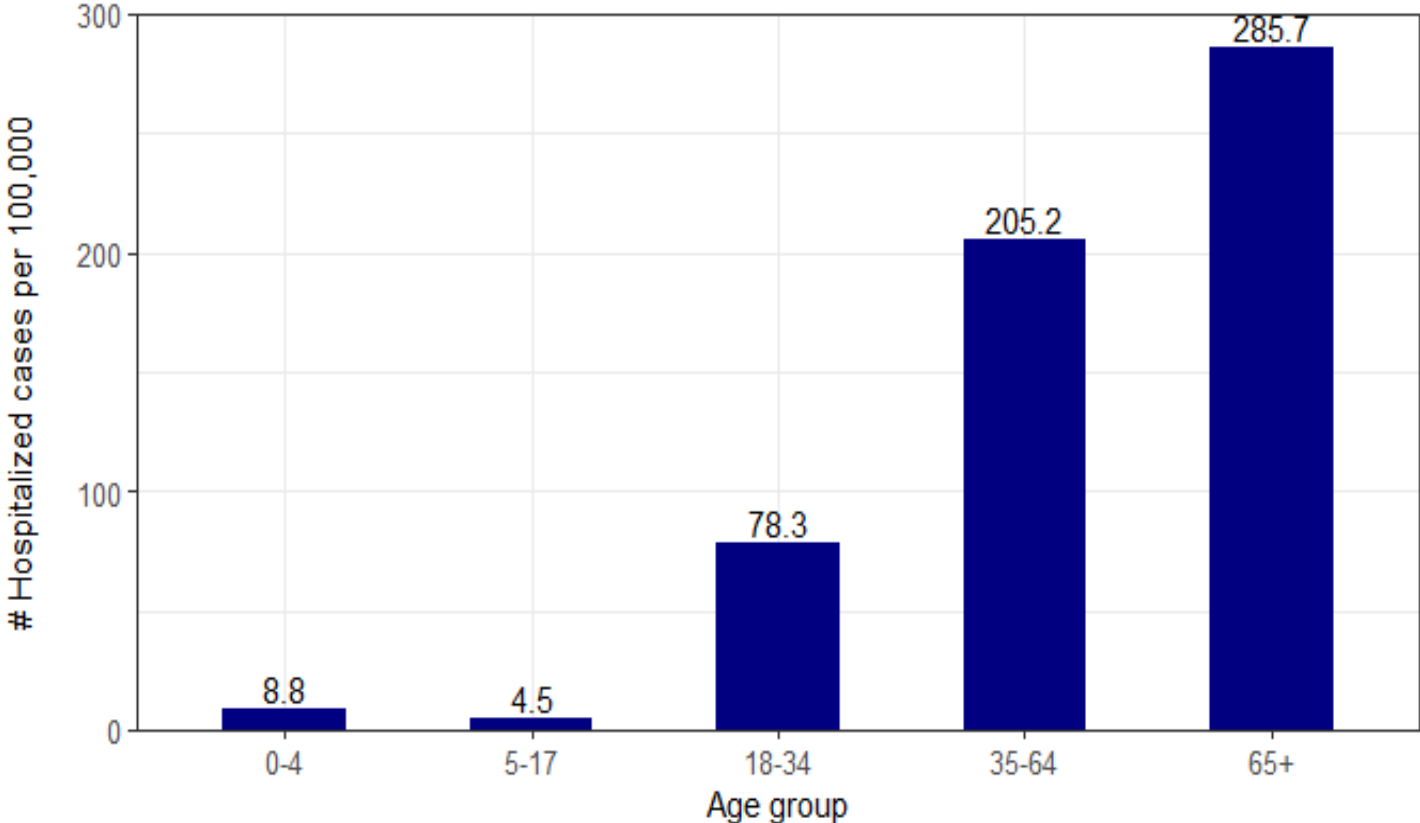
As of September 20, 2020

# Hospitalizations have plateaued since mid-August.



As of September 20, 2020

Although the 35-64 year old age group makes up 52% of hospitalized cases (data not shown), the 65 and over age group has the highest hospitalizations per 100,000 population.

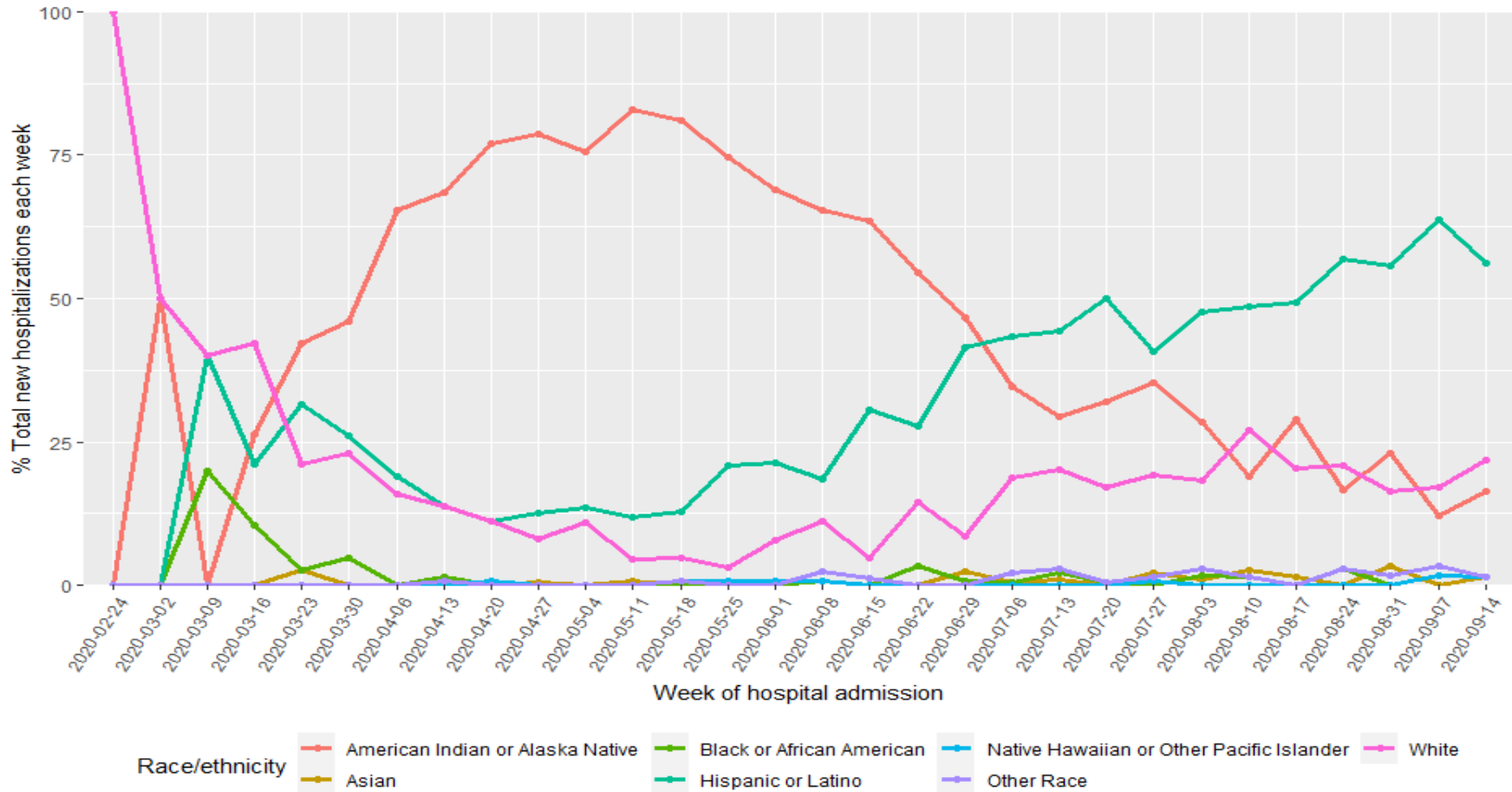


As of September 20, 2020



Investing for tomorrow, delivering today.

# Hispanic or Latinos continue to make the highest percentage of hospital admissions each week, followed by Whites and American Indian or Alaska Natives.



As of September 20, 2020

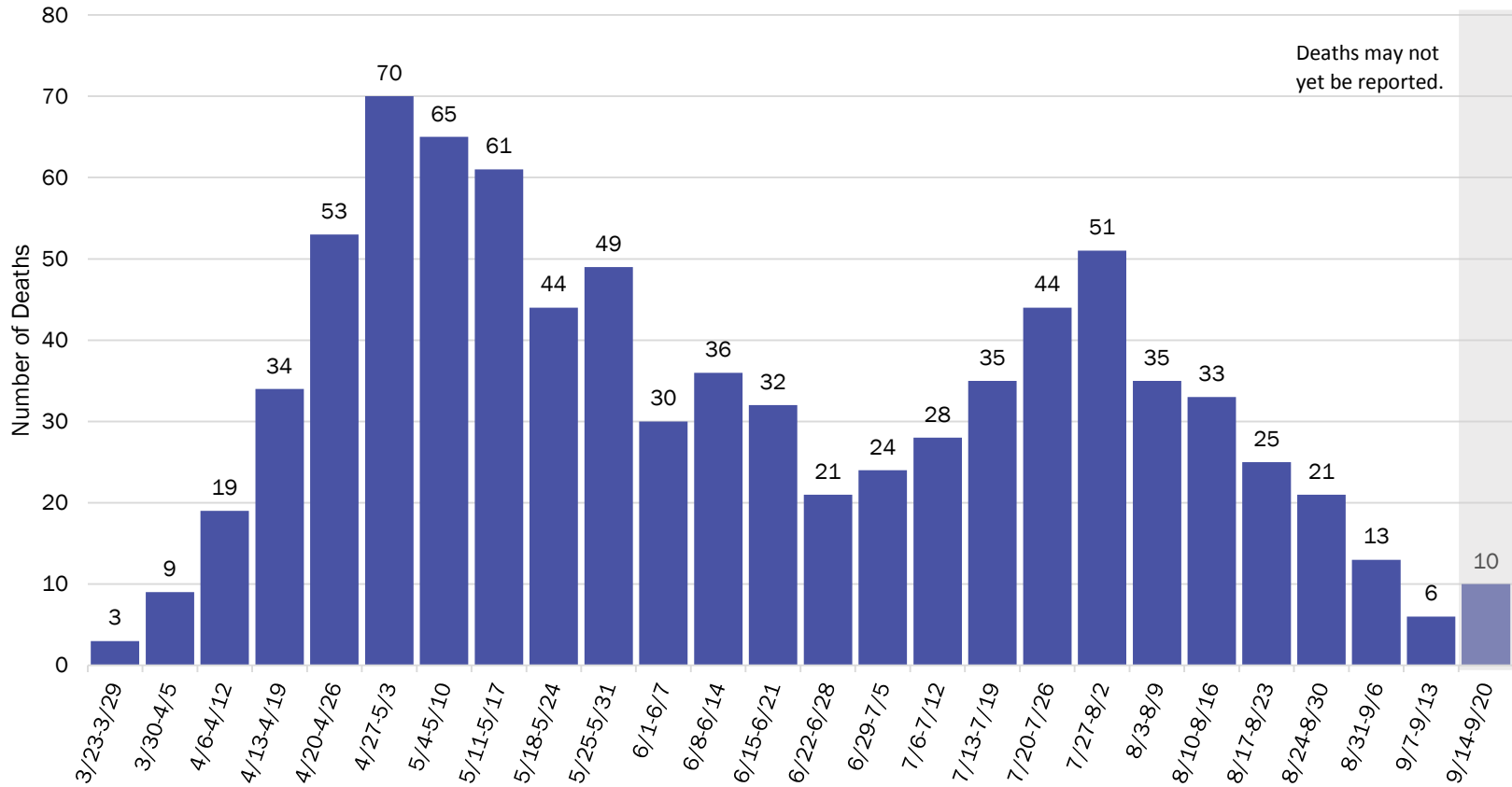


Investing for tomorrow, delivering today.

1190 S. St. Francis Drive • Santa Fe, NM 87505 • Phone: 505-827-2613 • Fax: 505-827-2530 • nmhealth.org



# COVID-19 Deaths by Week of Death, New Mexico

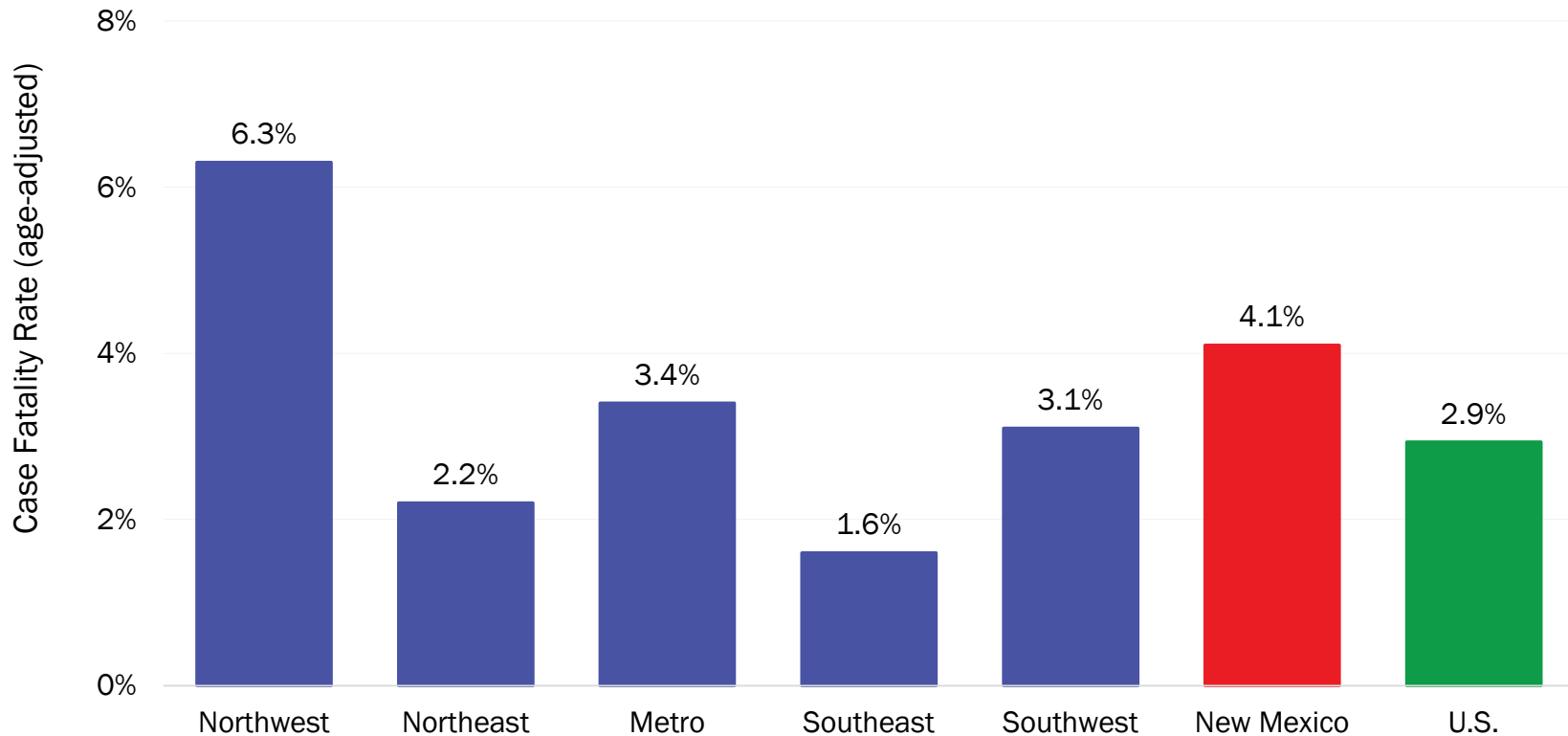


As of September 20, 2020



*Investing for tomorrow, delivering today.*

# Minimal changes in case fatality rates across regions



New Mexico Health Region

Note: Age-adjusted case fatality rates are adjusted to the current distribution of U.S. COVID-19 cases on 8/2. <https://www.cdc.gov/covid-data-tracker/index.html#demographics>

Source: Bureau of Vital Records and Health Statistics and Infectious Disease Epidemiology Bureau, Epidemiology and Response Division, reporting through 9.20.2020, New Mexico Department of Health.

# New Mexico Status Updates

- Case count: Statewide, daily case counts may be starting to increase again.
- Hospitalizations: After a period of recent decline in July, hospitalizations have remained steady.
- Deaths: Deaths have been declining, but may be beginning to rise.
- Contact tracing: The median time to quarantine for contacts identified last week was 1.04 days.

# Supplementary Slides

# Modeling Assumptions

Variable	Measured Value	Value as of 9.21.2020
R_Effective	Actual Measured Daily Value by key county	R_eff=1.1
Positive Test Multiplier	Calculated by LANL	3.4
Hospitalization and Mortality	Actual rolling value / estimated number of total infected	Medical 0.08% ICU 0.07% Vent Rate 49% of ICU Crude Case Fatality Rate 3.4%
Length of Stay	Actual rolling value / estimated number of total infected	Medical 5 days ICU 14 days ICU on Vent 14 days