

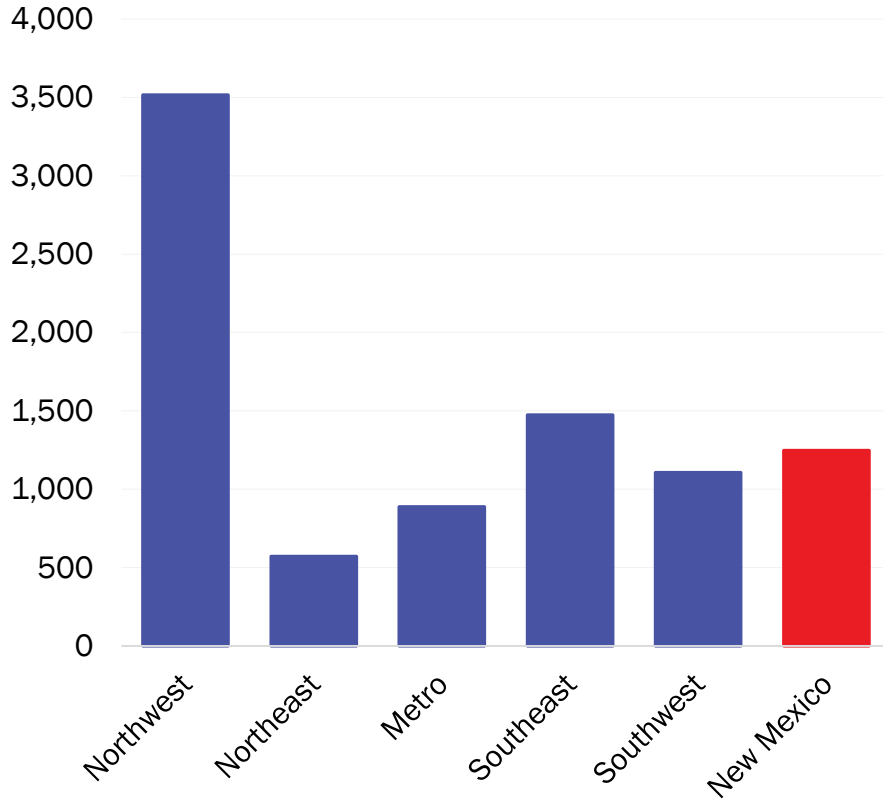
COVID-19 in New Mexico: Epidemiologic and Modeling Update

September 29, 2020

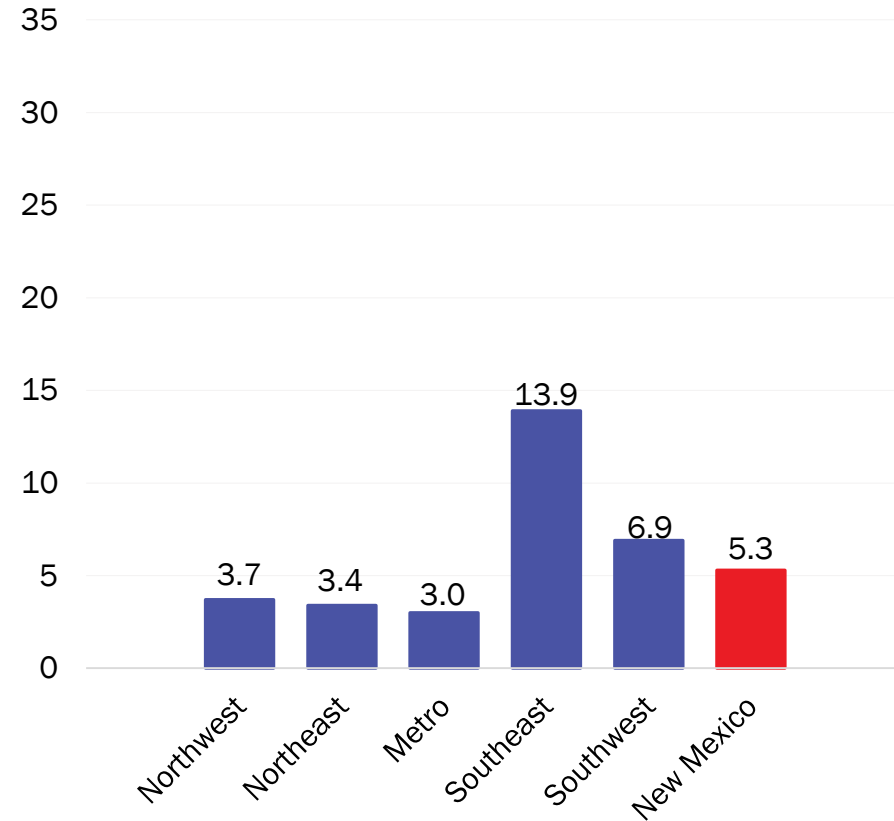
COVID-19 cases per 100,000 population

*Excludes cases among inmates in state and federal corrections and detention centers

Year-to-Date



New cases (Last 7 days) – September 21-27

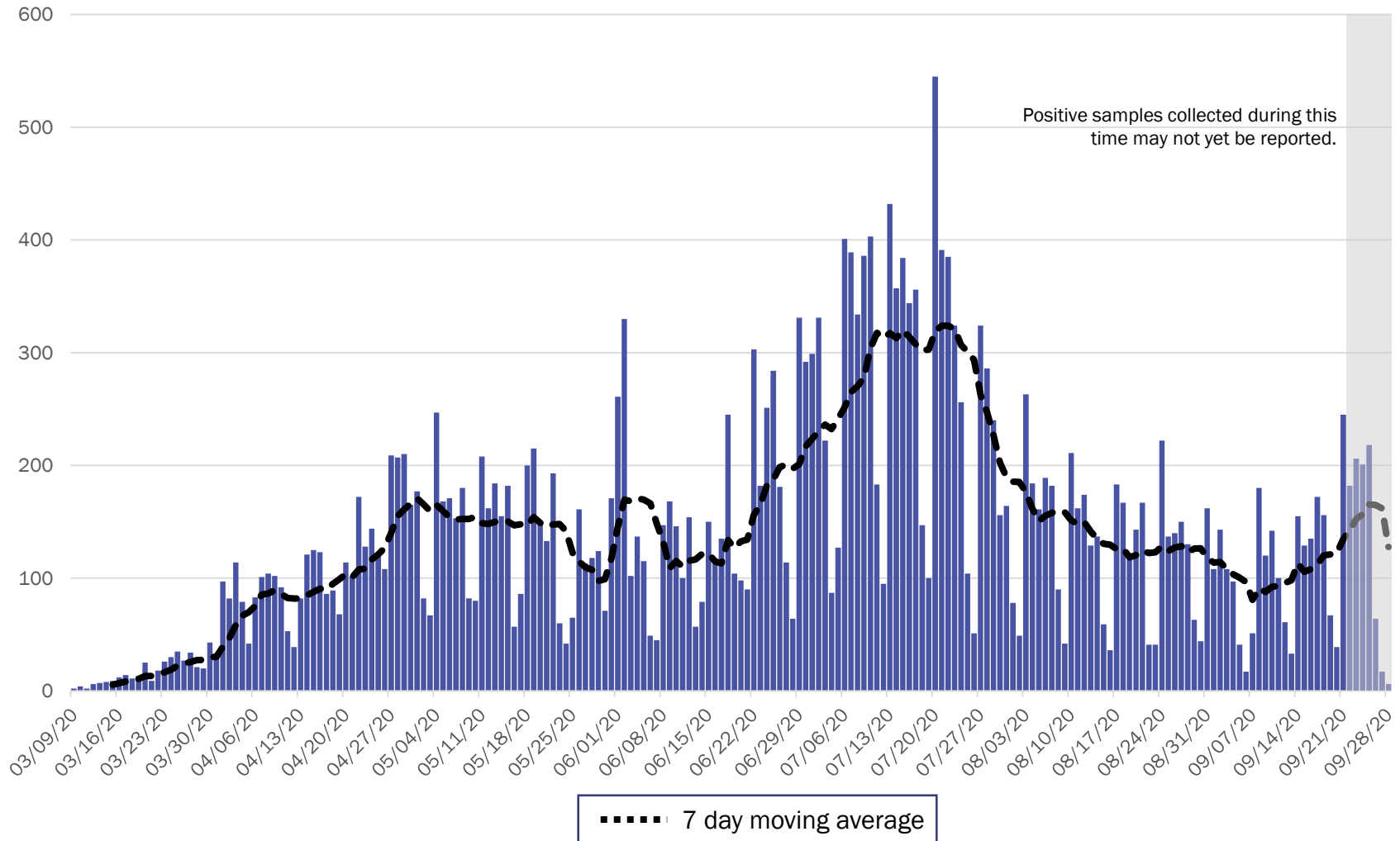


Source: Infectious Disease Epidemiology Bureau, Epidemiology and Response Division 9.28.2020, New Mexico Department of Health. Population estimates, UNM Geospatial and Population Studies Program.



Investing for tomorrow, delivering today.

New Mexico COVID-19 Cases by Date of Specimen Collection – September 29, 2020



Source: Infectious Disease Epidemiology Bureau, Epidemiology and Response Division 9.29.2020, New Mexico Department of Health.

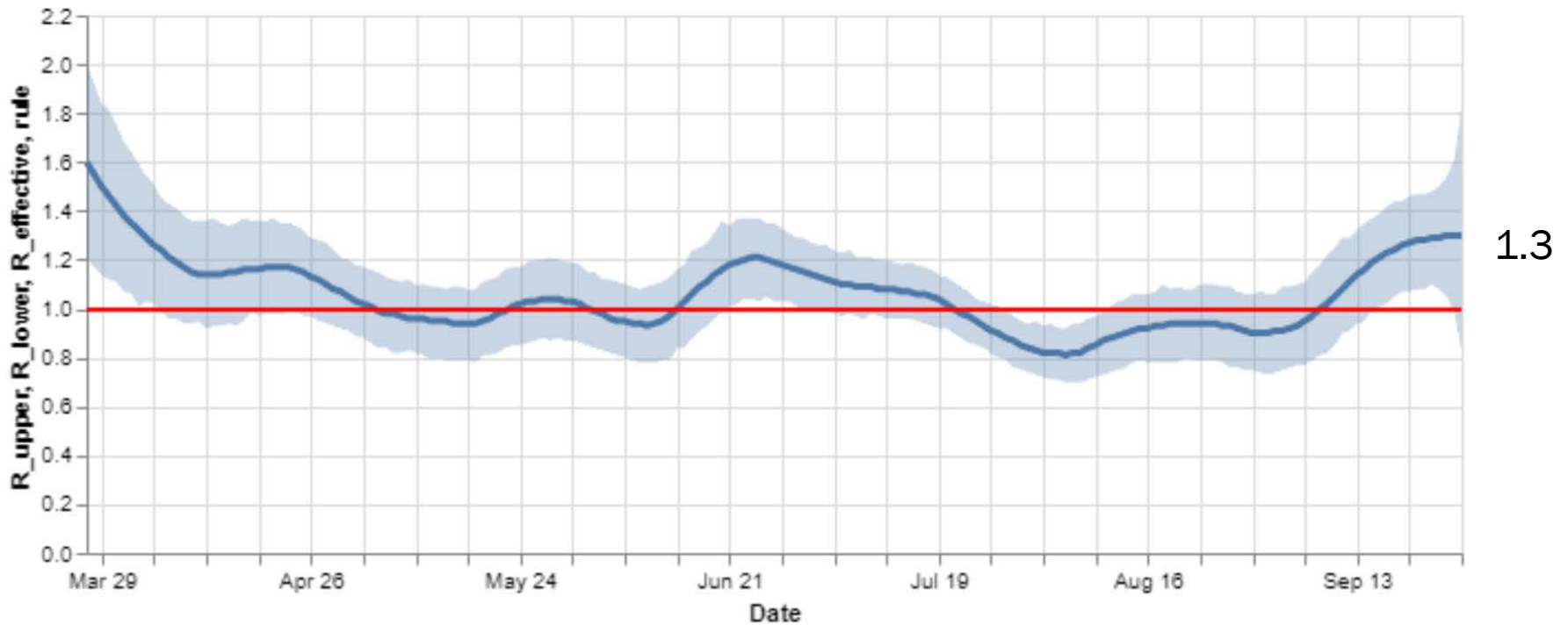


Investing for tomorrow, delivering today.

1190 S. St. Francis Drive • Santa Fe, NM 87505 • Phone: 505-827-2613 • Fax: 505-827-2530 • nmhealth.org

Statewide R-effective has increased to 1.3.

R_effective over time, STATE



1.3

Courtesy of Presbyterian Healthcare Services – September 28, 2020.

Key

Low Level Endemic
<1.0

Approaching Low
Level Endemic
1.0-1.05

Requiring further
mitigation **>1.05**

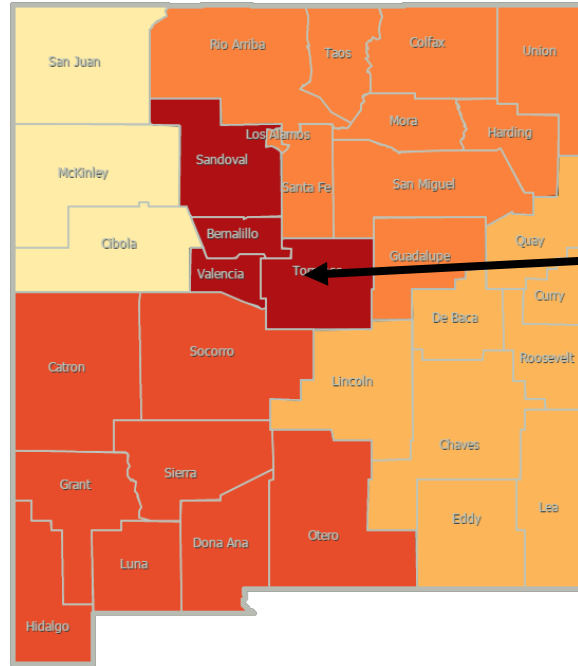
Northwest
R_effective 1.4 ↑

Northeast
R_effective 1.3 ↑

Metro
R_effective 1.4 ↑

Southwest
R_effective 1.3 ↑

Southeast
R_effective 1.2 ↑



As of September 21, 2020

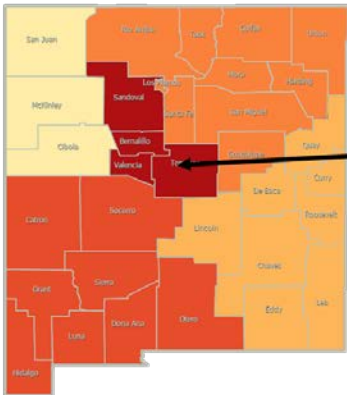
Northwest
R_effective 1.0 ↑

Northeast
R_effective 1.1 ↑

Metro
R_effective 1.2 ↑

Southwest
R_effective 1.1 ↑

Southeast
R_effective 1.1 ↑



Region	R-effective	95% Confidence Interval
State	1.3	[0.8, 1.8]
Metro	1.4	[0.2, 2.5]
Northeast	1.3	[0.0, 2.9]
Northwest	1.4	[0.0, 3.4]
Southeast	1.2	[0.5, 2.0]
Southwest	1.3	[0.3, 2.4]

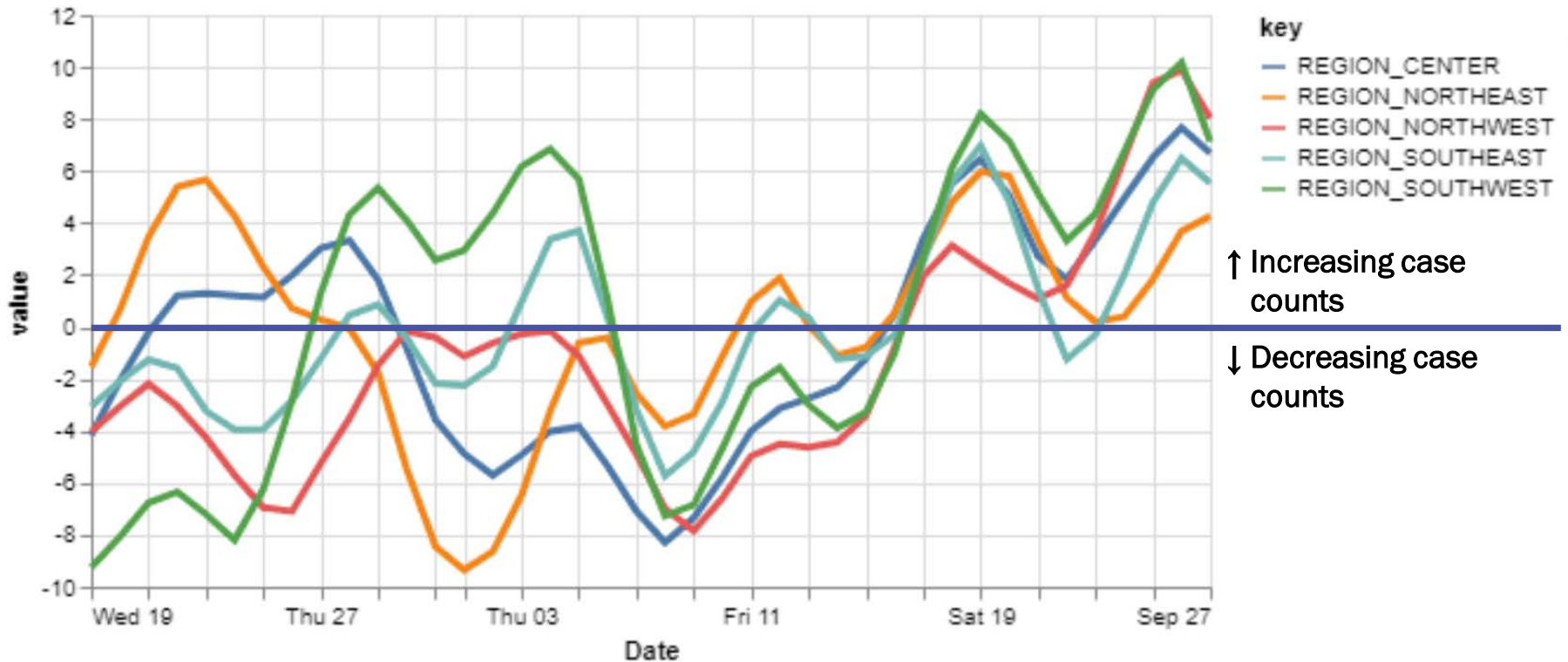
Courtesy of Presbyterian Healthcare Services – September 28, 2020.



Investing for tomorrow, delivering today.

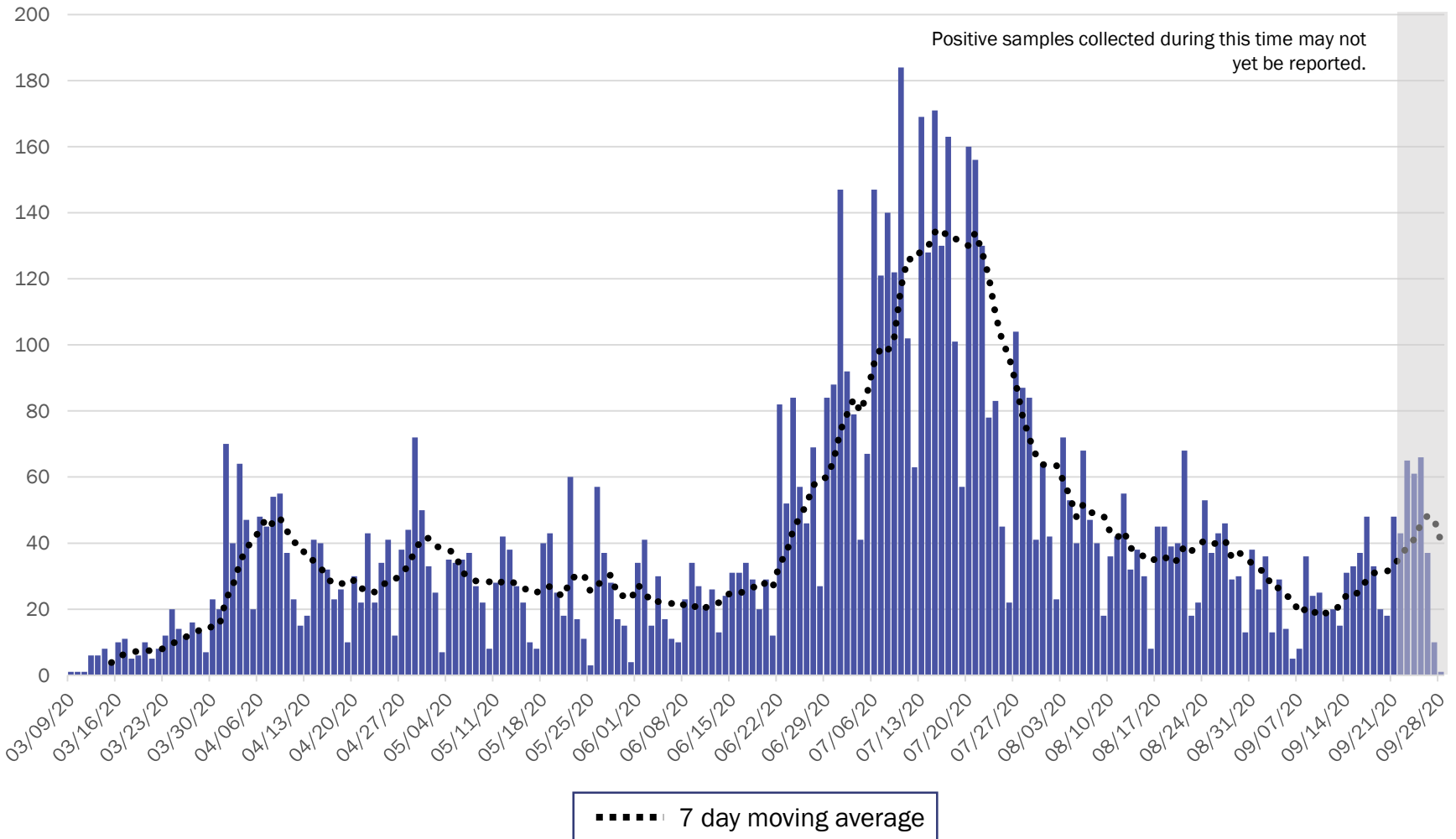
All regions have increasing case counts relative to the past 14 day period.

14-day relative growth rate (%), Regions



Courtesy of Presbyterian Healthcare Services – September 28, 2020.

Metro Region Case Count by Collection Date with 7 Day Moving Average September 29, 2020

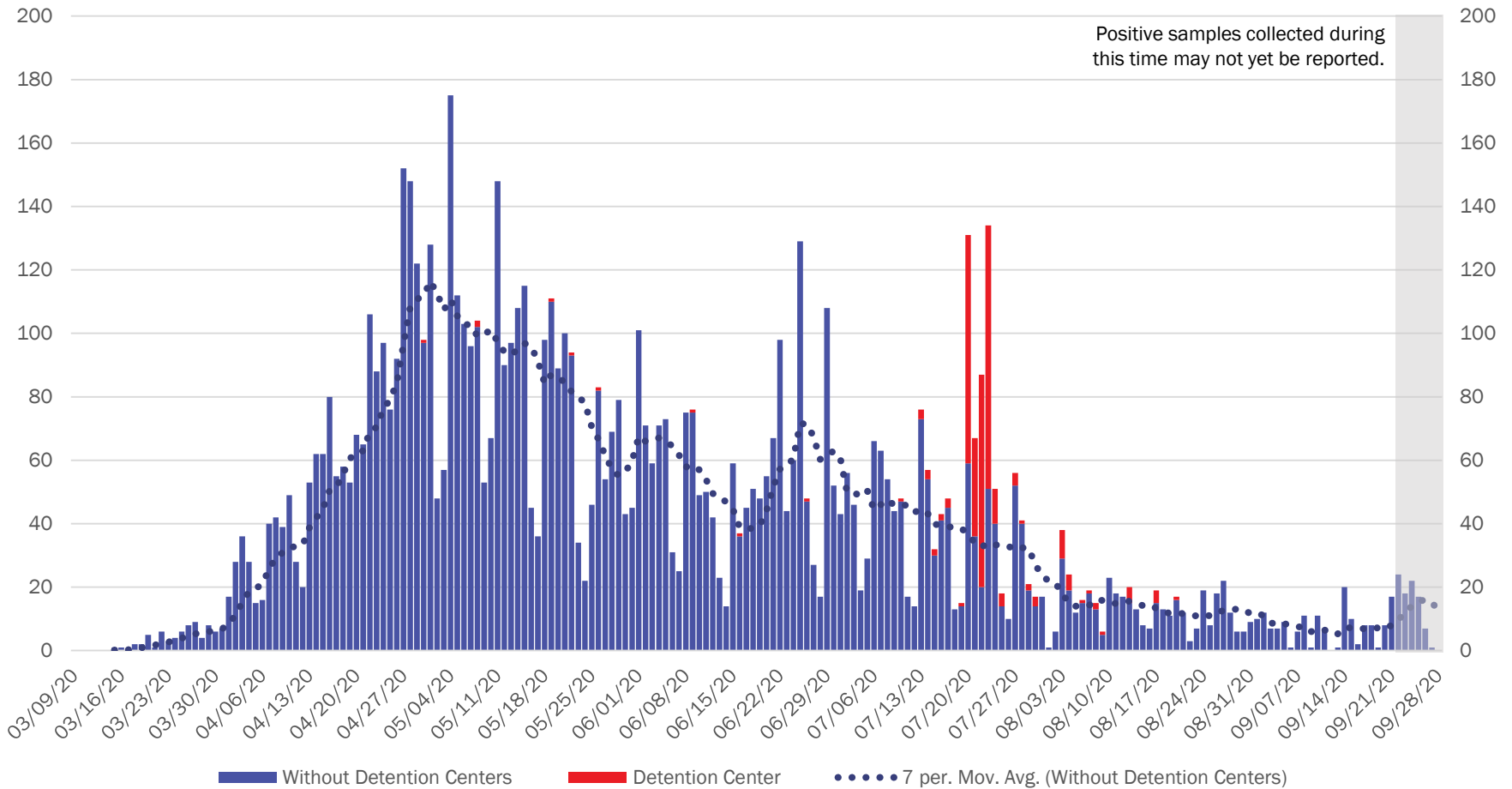


Source: Infectious Disease Epidemiology Bureau, Epidemiology and Response Division 9.29.2020, New Mexico Department of Health.



Investing for tomorrow, delivering today.

Northwest Region Case Count by Collection Date with 7 Day Moving Average September 29, 2020



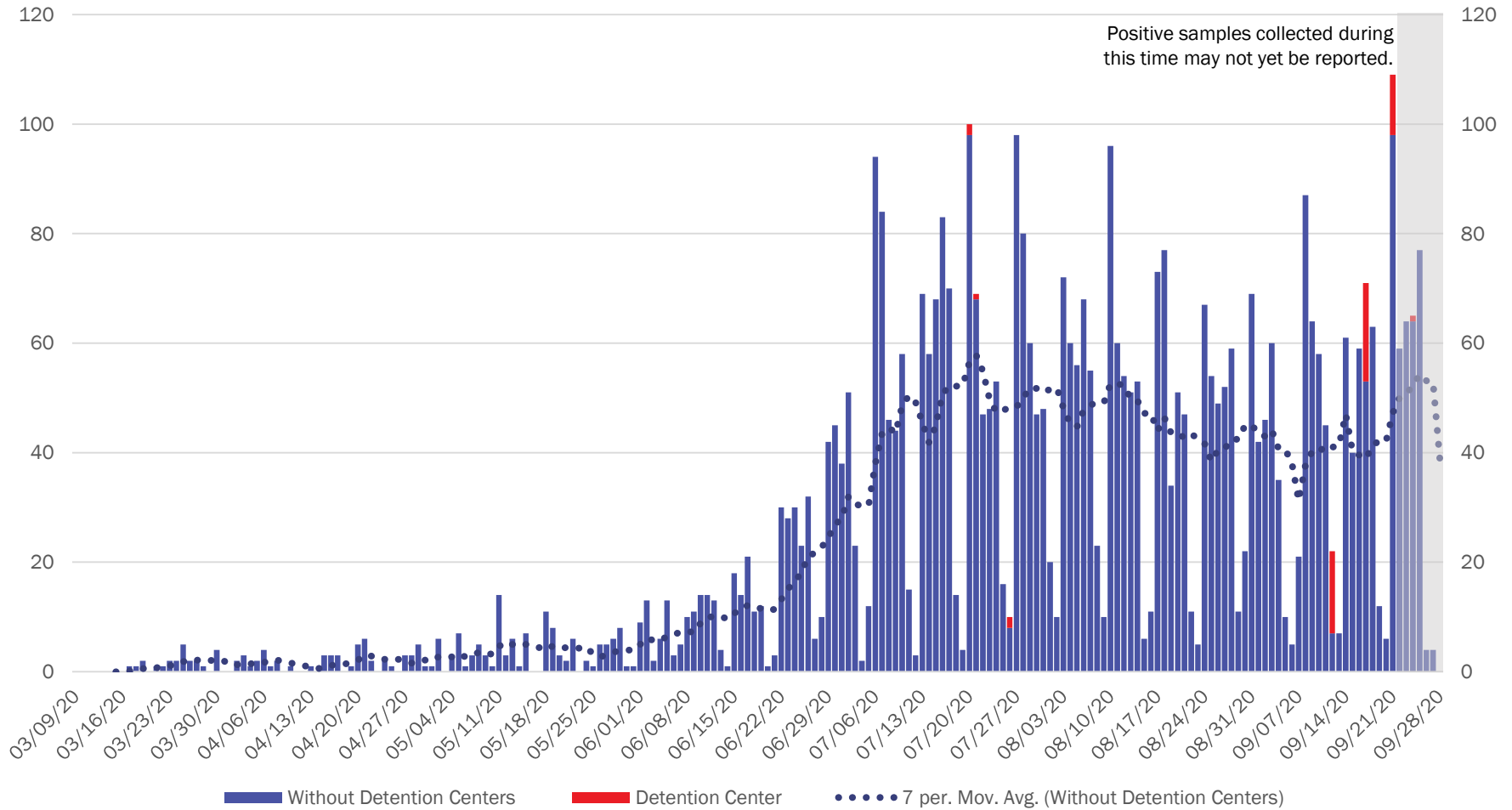
“Detention Centers” refer to federal and New Mexico Corrections Department facilities.
 Source: Infectious Disease Epidemiology Bureau, Epidemiology and Response Division 9.29.2020, New Mexico Department of Health.



Investing for tomorrow, delivering today.

1190 S. St. Francis Drive • Santa Fe, NM 87505 • Phone: 505-827-2613 • Fax: 505-827-2530 • nmhealth.org

Southeast Region Case Count by Collection Date with 7 Day Moving Average September 29, 2020



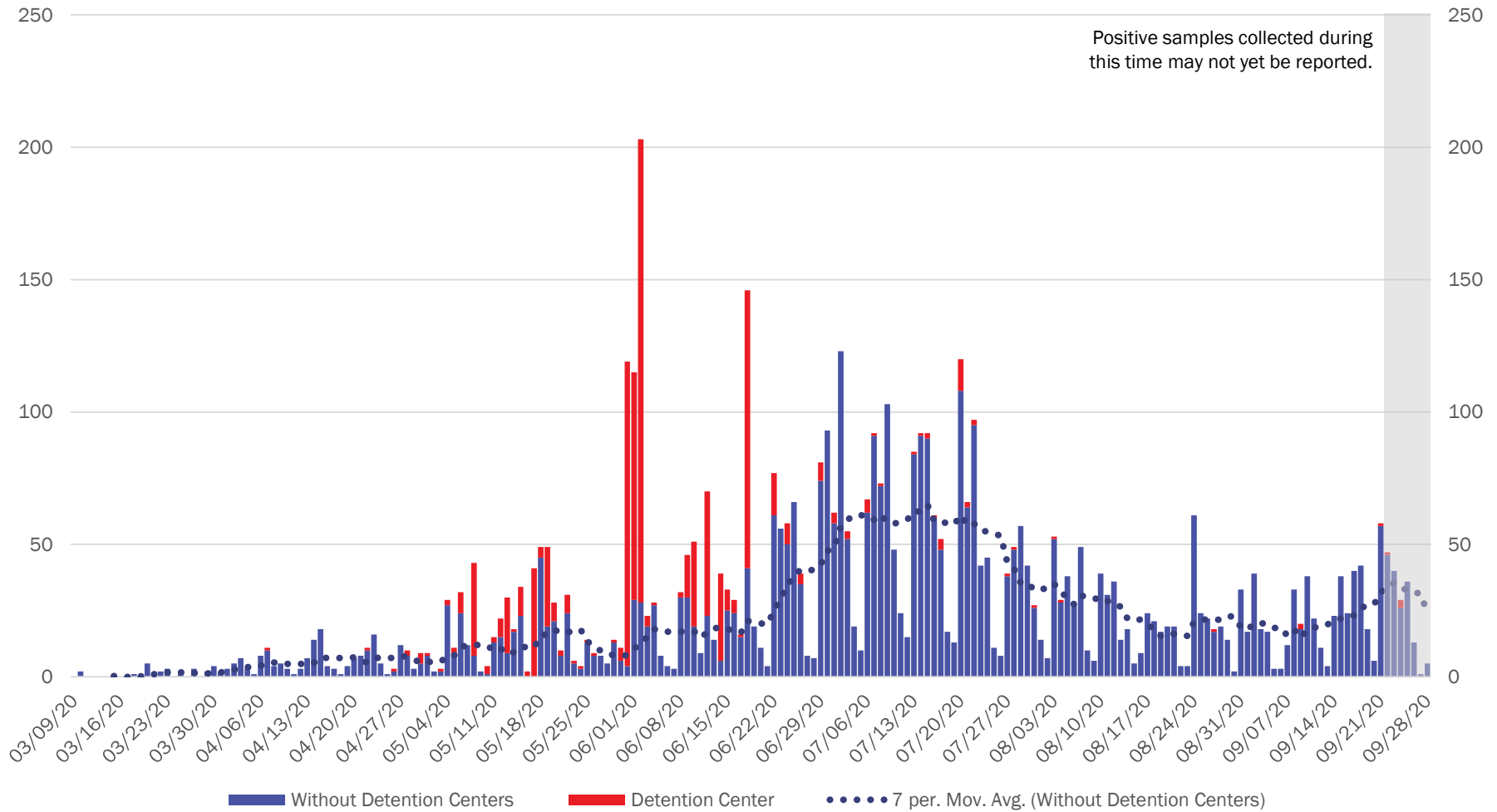
“Detention Centers” refer to federal and New Mexico Corrections Department facilities.
 Source: Infectious Disease Epidemiology Bureau, Epidemiology and Response Division 9.29.2020, New Mexico Department of Health.



Investing for tomorrow, delivering today.



Southwest Region Case Count by Collection Date with 7 Day Moving Average September 29, 2020



“Detention Centers” refer to federal and New Mexico Corrections Department facilities.

Source: Infectious Disease Epidemiology Bureau, Epidemiology and Response Division 9.29.2020, New Mexico Department of Health.



Investing for tomorrow, delivering today.

1190 S. St. Francis Drive • Santa Fe, NM 87505 • Phone: 505-827-2613 • Fax: 505-827-2530 • nmhealth.org

New Mexico Status Updates

- Case count: Statewide, daily case counts have started to increase again.
- Hospitalizations: After a period of recent decline in July, hospitalizations have remained steady at <75 each day.
- Deaths: There was a recent spike in deaths but decreased last week.
- Contact tracing: The median time to quarantine for contacts identified last week was approximately 1 days.

For more information, please visit the [Epidemiology Reports](https://cv.nmhealth.org/epidemiology-reports/) page on the NMDOH COVID-19 website: <https://cv.nmhealth.org/epidemiology-reports/>

Supplementary Slides

Modeling Assumptions

Variable	Measured Value	Value as of 9.28.2020
R_Effective	Actual Measured Daily Value by key county	R_eff=1.3
Positive Test Multiplier	Calculated by LANL	3.3
Hospitalization and Mortality	Actual rolling value / estimated number of total infected	Medical 0.1% ICU 0.08% Vent Rate 46% of ICU Crude Case Fatality Rate 3.3%
Length of Stay	Actual rolling value / estimated number of total infected	Medical 5 days ICU 14 days ICU on Vent 14 days