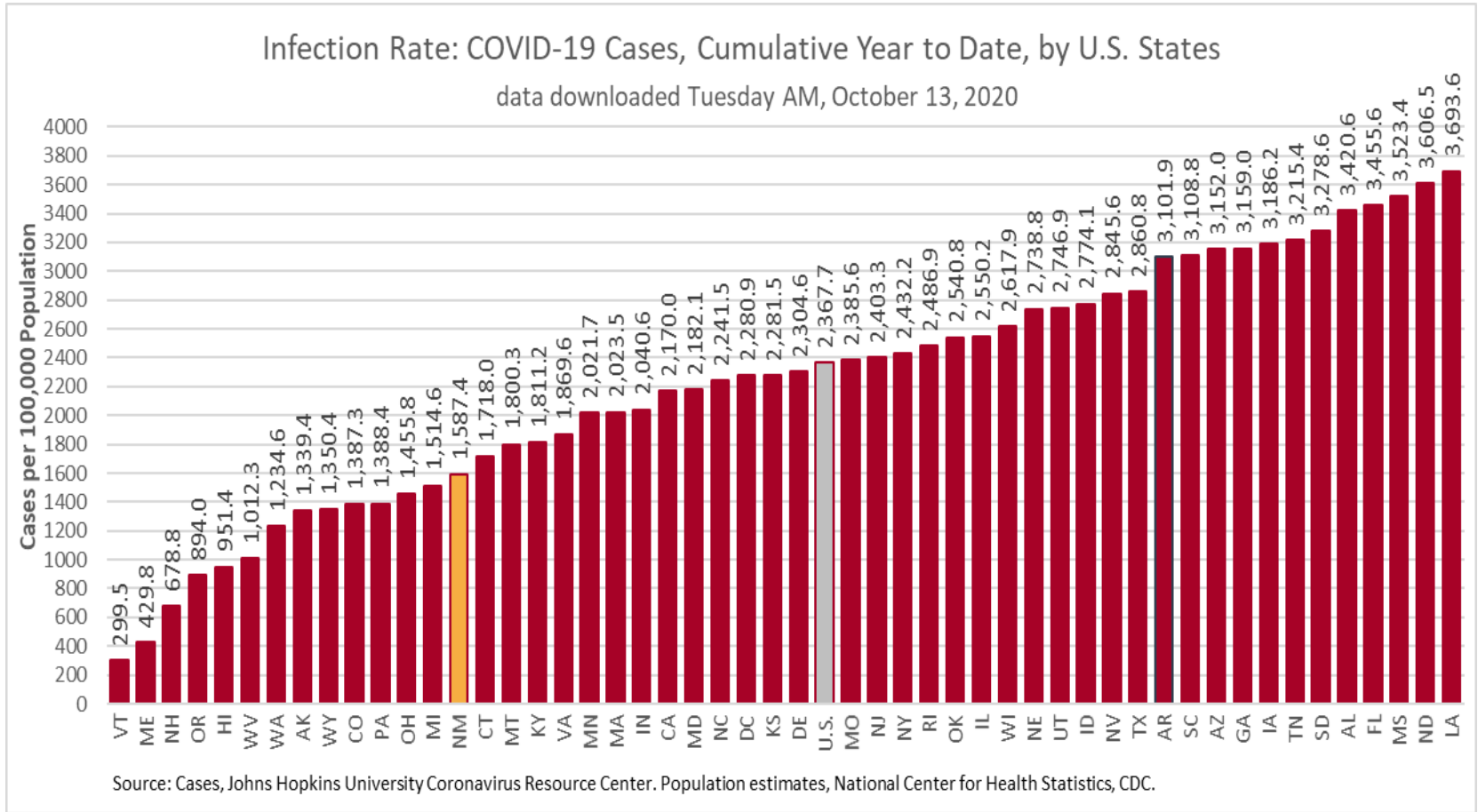


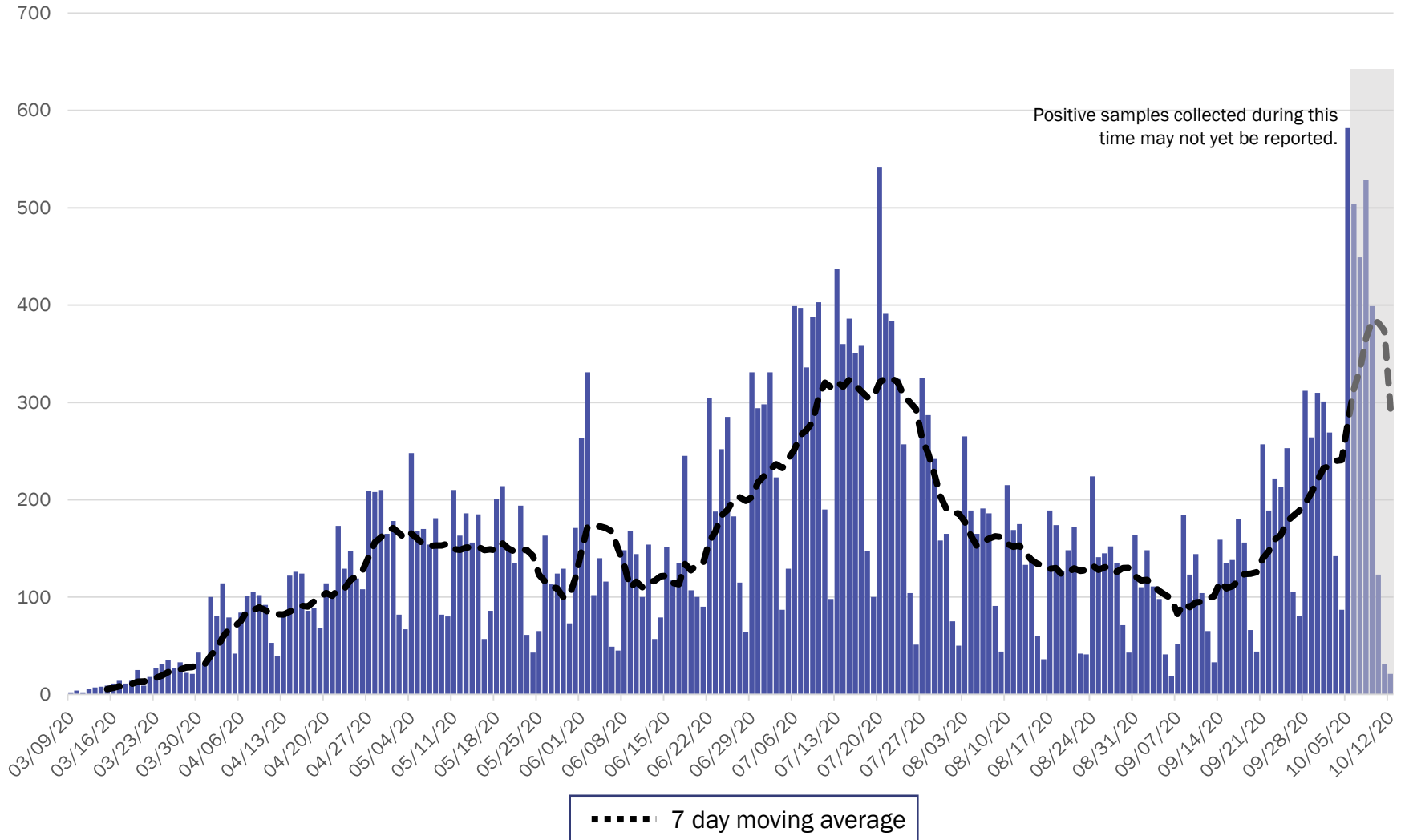
# COVID-19 in New Mexico: Epidemiologic and Modeling Update

October 13, 2020

# New Mexico has the 38<sup>th</sup> highest number of cases per 100,000 population in the United States



# New Mexico COVID-19 Cases by Date of Specimen Collection – October 13, 2020



Source: Infectious Disease Epidemiology Bureau, Epidemiology and Response Division 10.13.2020, New Mexico Department of Health.

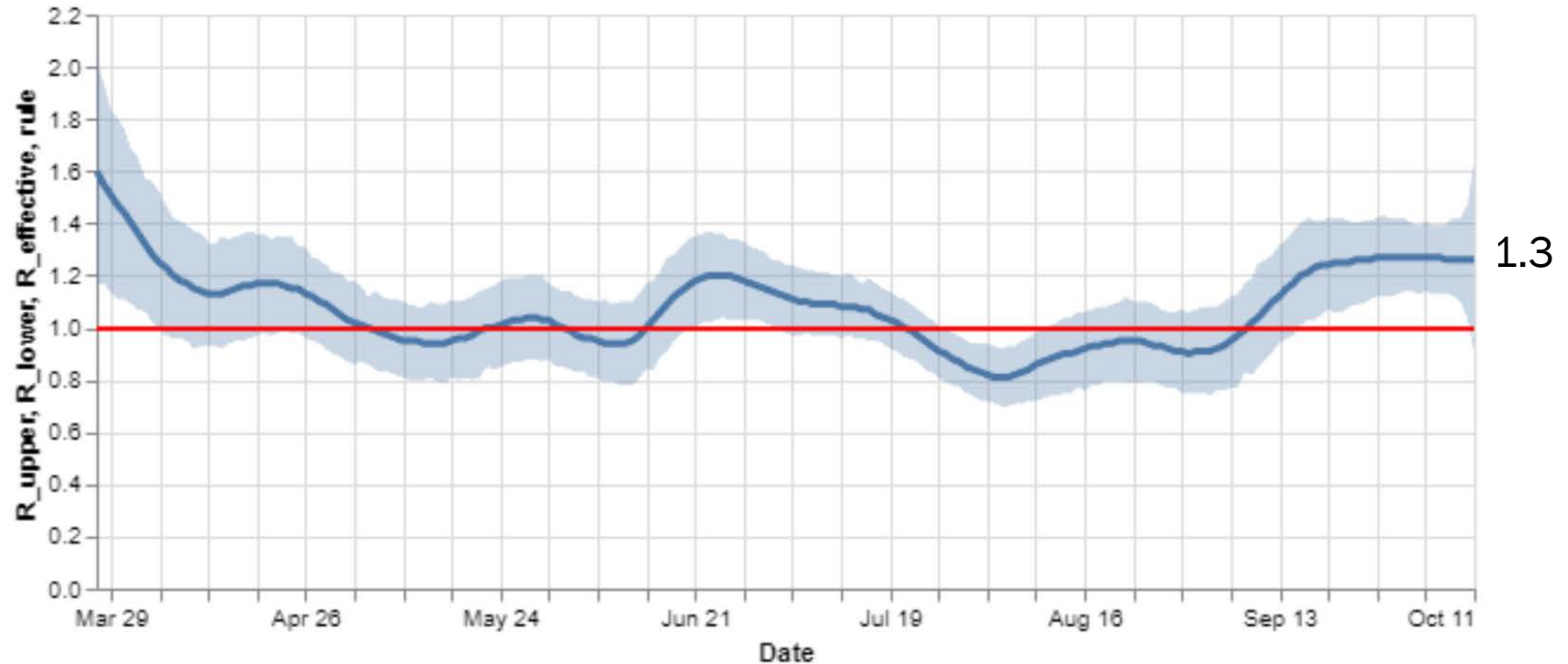


*Investing for tomorrow, delivering today.*

1190 S. St. Francis Drive • Santa Fe, NM 87505 • Phone: 505-827-2613 • Fax: 505-827-2530 • nmhealth.org

# Statewide R-effective has increased to 1.3.

## R\_effective over time, STATE



1.3

Courtesy of Presbyterian Healthcare Services – October 12, 2020.

**Key**

Low Level Endemic  
<1.0

Approaching Low Level Endemic  
1.0-1.05

Requiring further mitigation >1.05

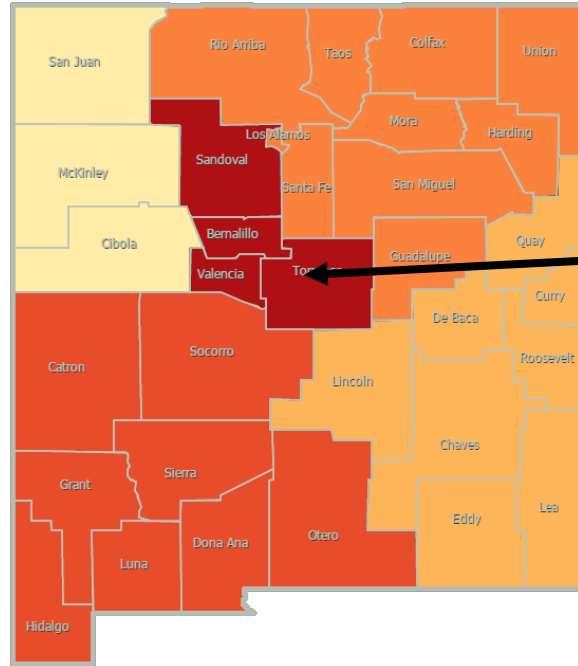
**Northwest**  
**R\_effective 1.1 ↑**

**Northeast**  
**R\_effective 1.2 ↑**

**Metro**  
**R\_effective 1.4 ↑**

**Southwest**  
**R\_effective 1.2 =**

**Southeast**  
**R\_effective 1.2 ↑**



As of October 6, 2020

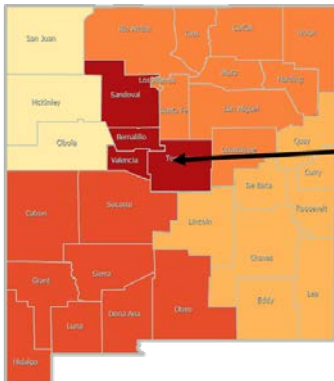
**Northwest**  
**R\_effective 1.0 ↓**

**Northeast**  
**R\_effective 1.1 ↓**

**Metro**  
**R\_effective 1.3 ↓**

**Southwest**  
**R\_effective 1.2 ↓**

**Southeast**  
**R\_effective 1.1 ↓**



Region	R-effective	95% Confidence Interval
State	1.3	[0.9, 1.6]
Metro	1.4	[0.8, 2.0]
Northeast	1.2	[0.0, 3.1]
Northwest	1.1	[0.0, 2.7]
Southeast	1.2	[0.6, 1.9]
Southwest	1.2	[0.6, 2.1]

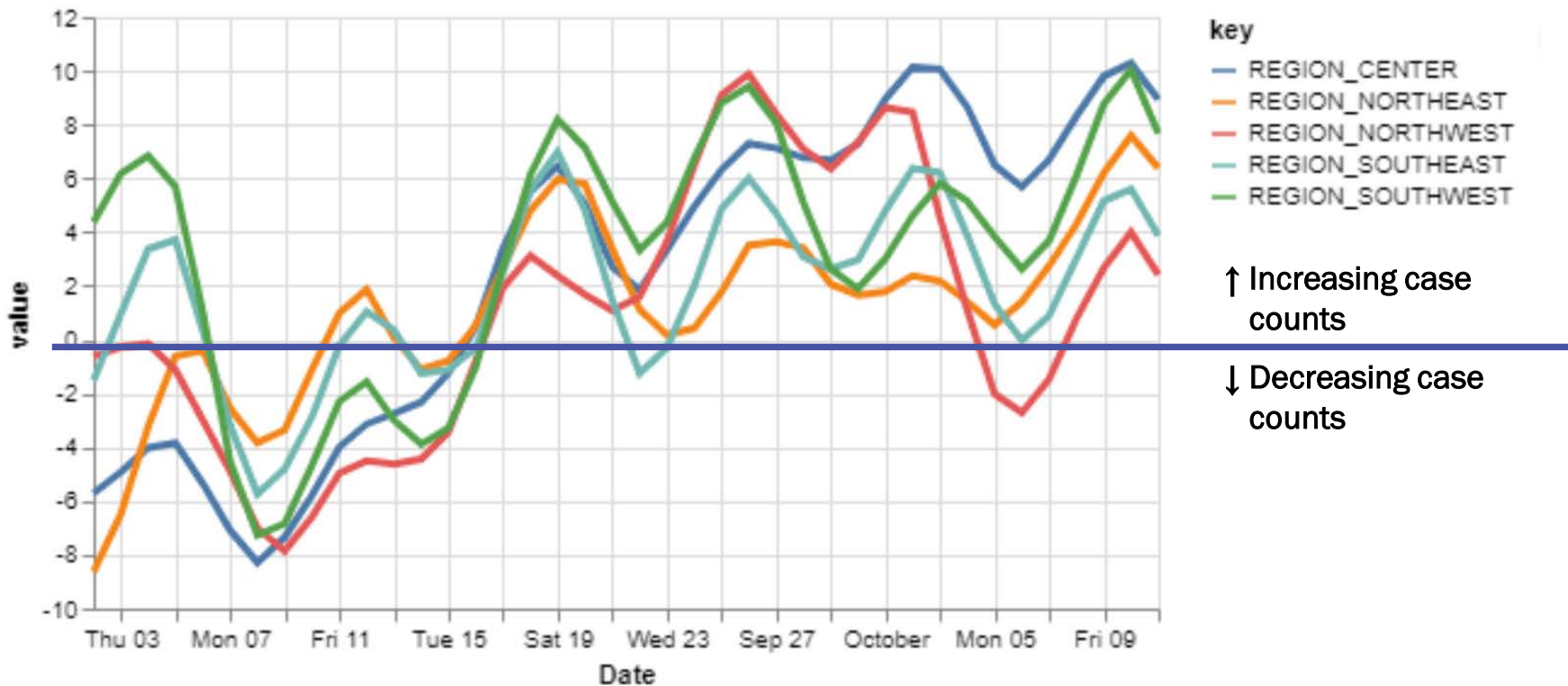
Courtesy of Presbyterian Healthcare Services – October 12, 2020.



*Investing for tomorrow, delivering today.*

# All regions have increasing daily case counts.

## 14-day relative growth rate (%), Regions



key

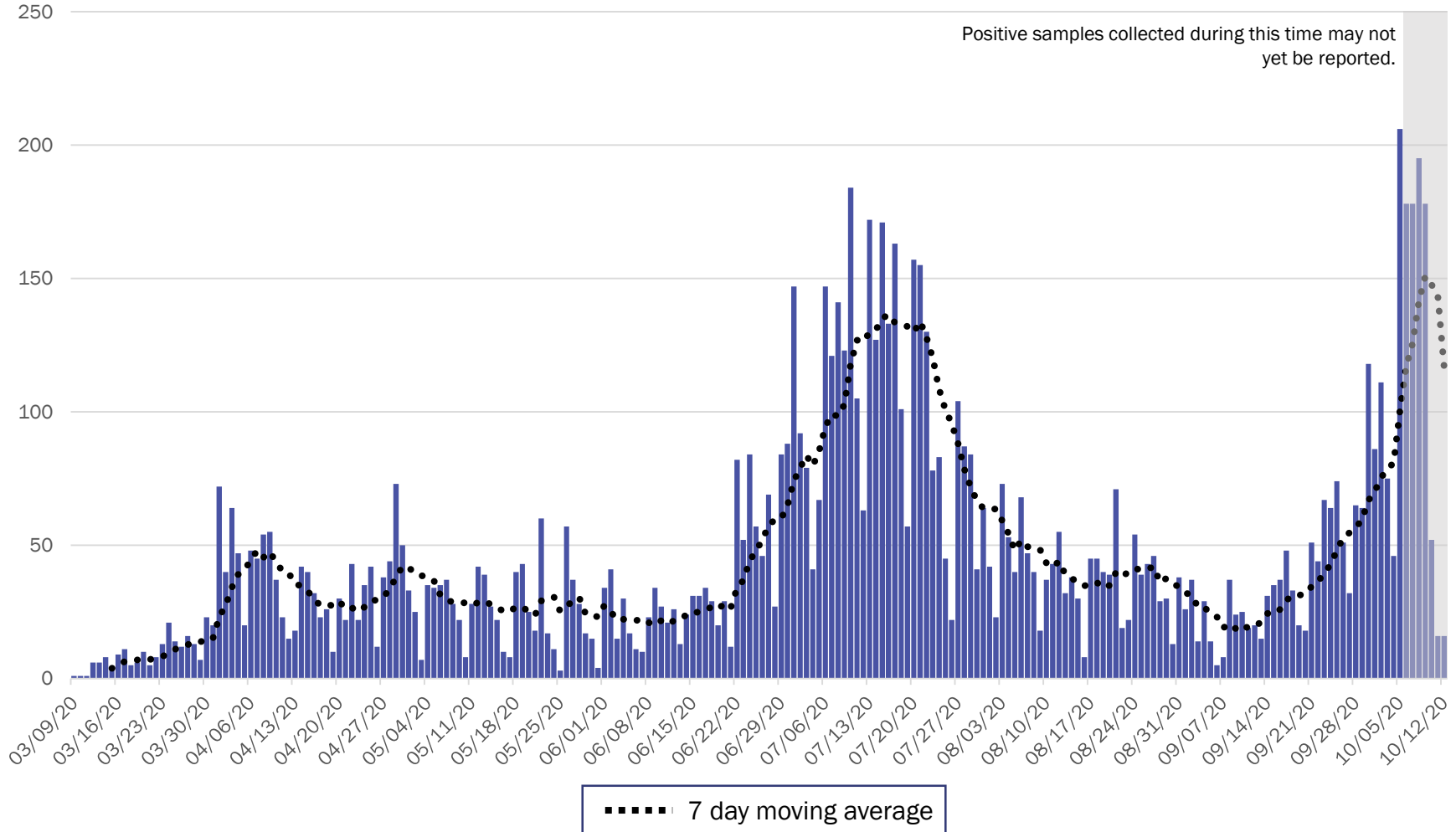
- REGION\_CENTER
- REGION\_NORTHEAST
- REGION\_NORTHWEST
- REGION\_SOUTHEAST
- REGION\_SOUTHWEST

↑ Increasing case counts

↓ Decreasing case counts

Courtesy of Presbyterian Healthcare Services – October 12, 2020.

# Metro Region Case Count by Collection Date with 7 Day Moving Average October 13, 2020



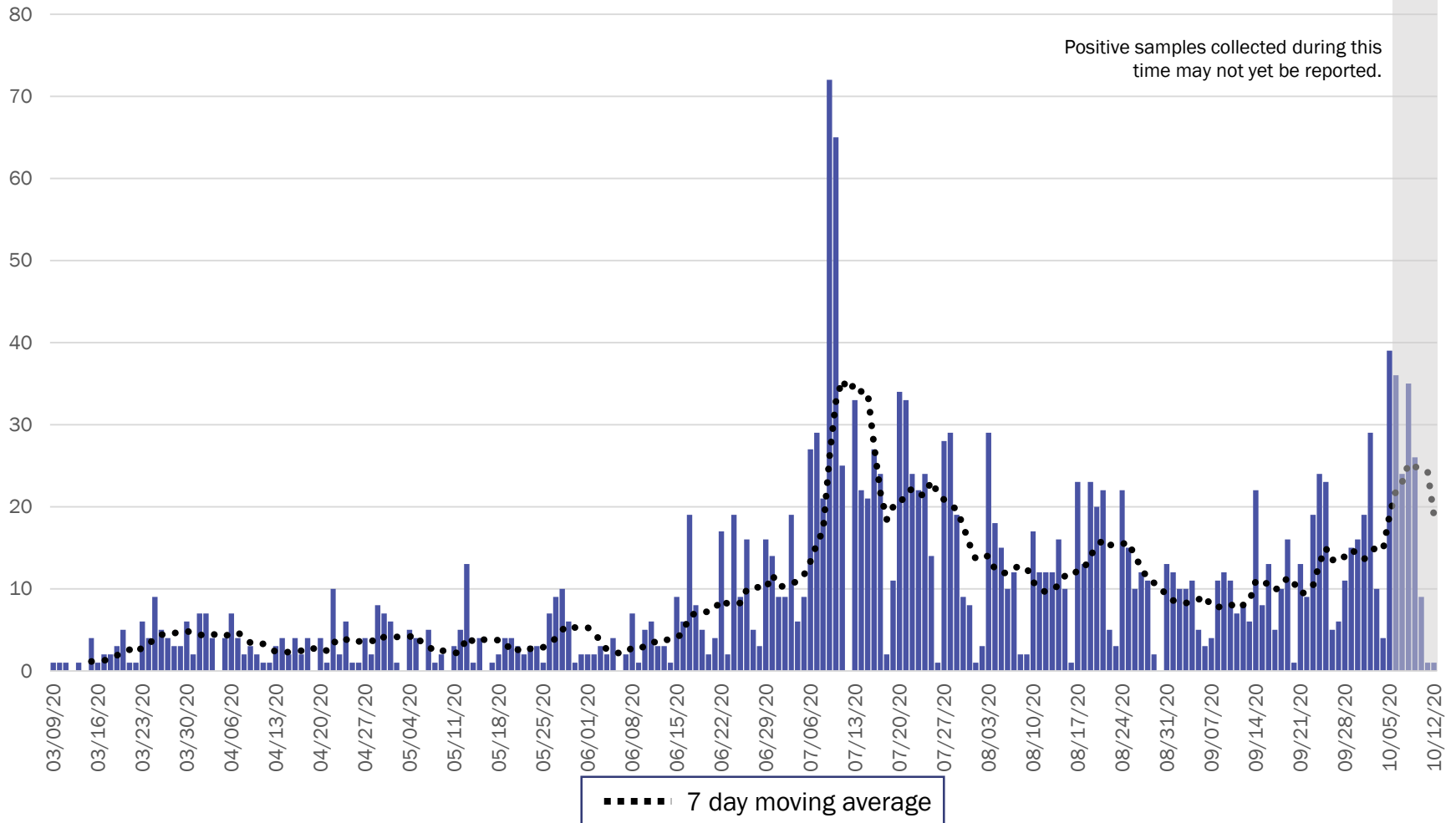
Source: Infectious Disease Epidemiology Bureau, Epidemiology and Response Division 10.13.2020, New Mexico Department of Health.



*Investing for tomorrow, delivering today.*

1190 S. St. Francis Drive • Santa Fe, NM 87505 • Phone: 505-827-2613 • Fax: 505-827-2530 • nmhealth.org

# Northeast Region Case Count by Collection Date with 7 Day Moving Average October 13, 2020



Source: Infectious Disease Epidemiology Bureau, Epidemiology and Response Division 10.13.2020, New Mexico Department of Health

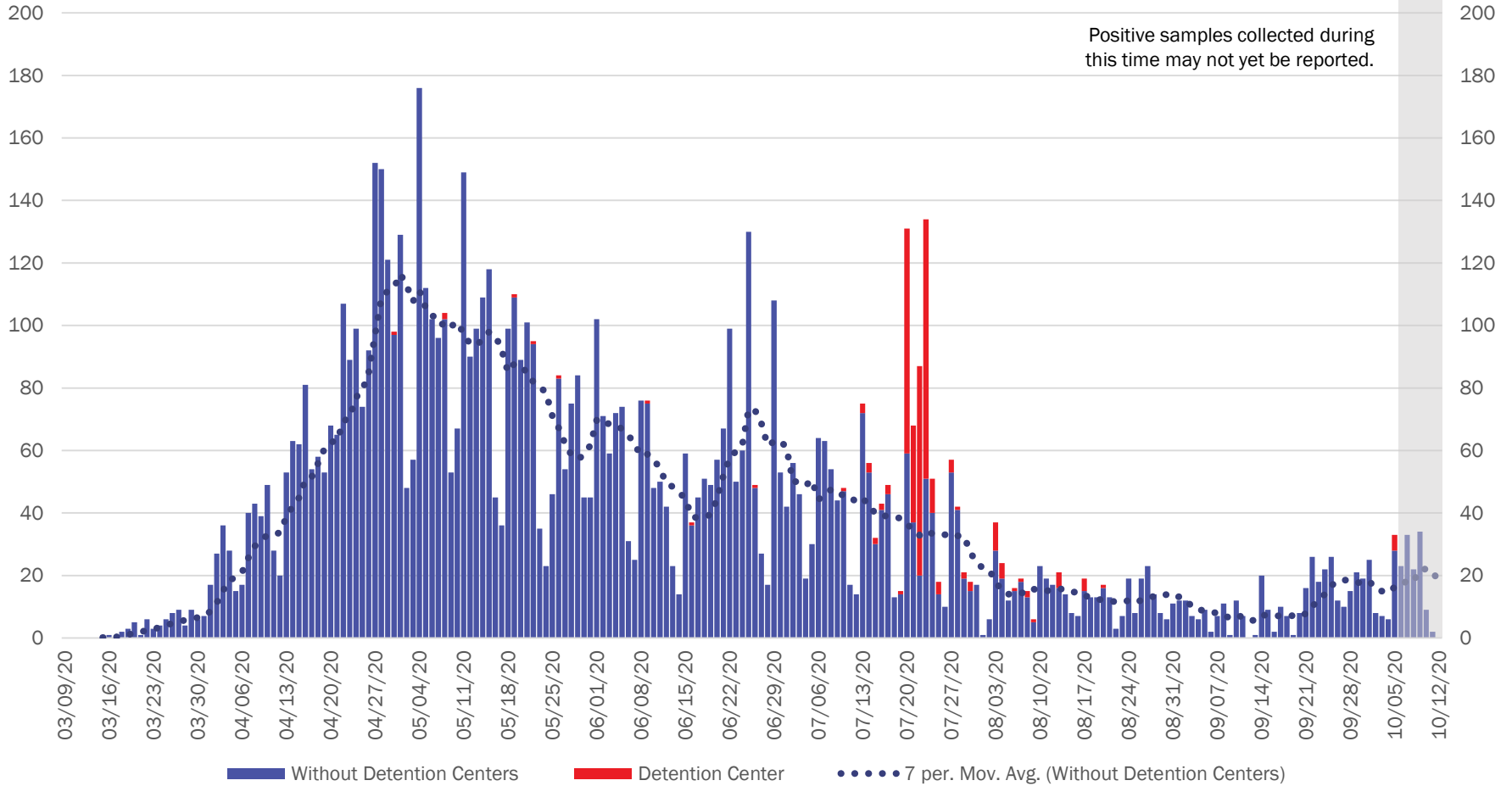


*Investing for tomorrow, delivering today.*

1190 S. St. Francis Drive • Santa Fe, NM 87505 • Phone: 505-827-2613 • Fax: 505-827-2530 • nmhealth.org



# Northwest Region Case Count by Collection Date with 7 Day Moving Average October 13, 2020



“Detention Centers” refer to federal and New Mexico Corrections Department facilities.

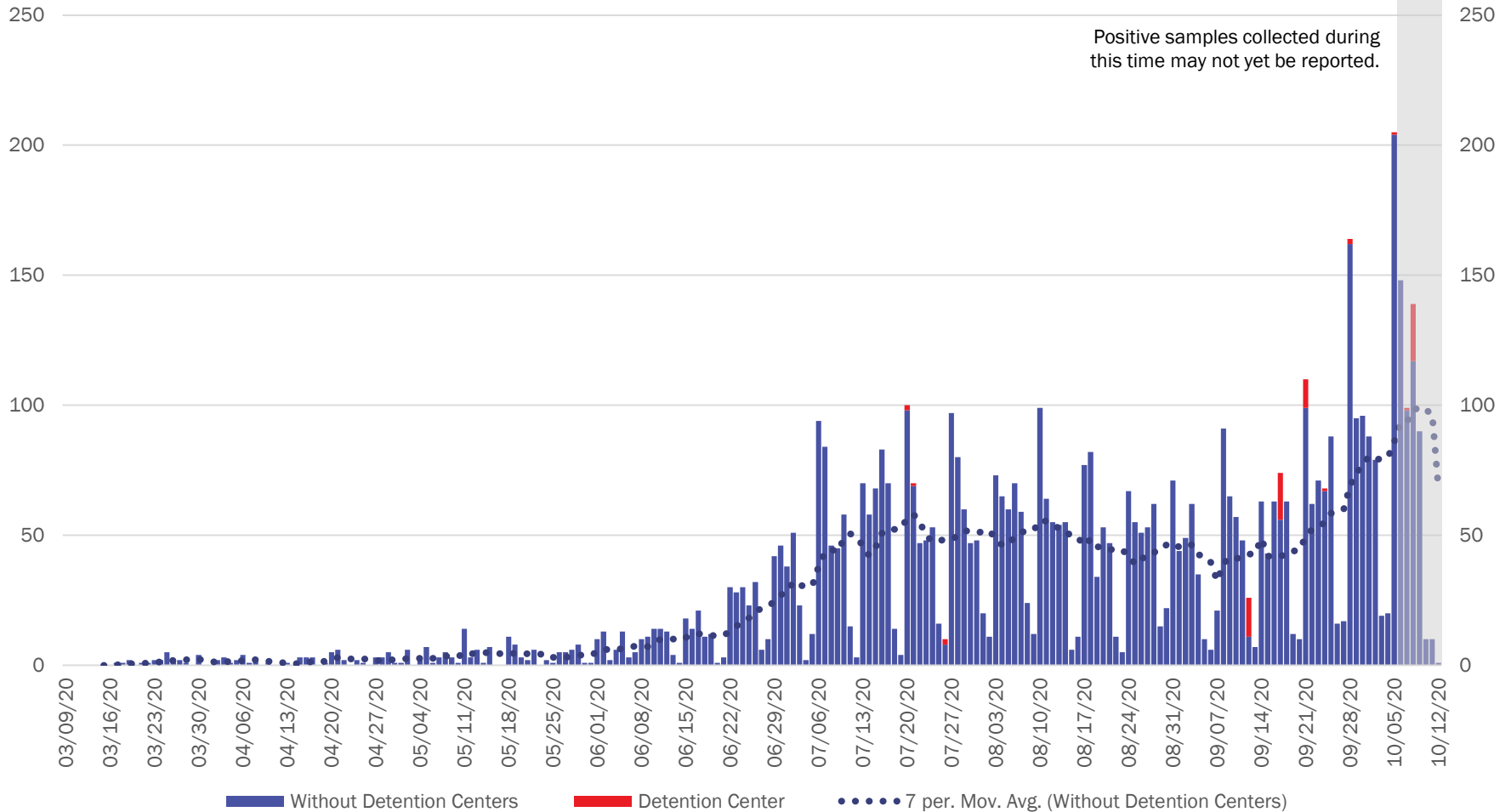
Source: Infectious Disease Epidemiology Bureau, Epidemiology and Response Division 10.13.2020, New Mexico Department of Health.



*Investing for tomorrow, delivering today.*



# Southeast Region Case Count by Collection Date with 7 Day Moving Average October 13, 2020



“Detention Centers” refer to federal and New Mexico Corrections Department facilities.  
 Source: Infectious Disease Epidemiology Bureau, Epidemiology and Response Division 10.13.2020, New Mexico Department of Health.

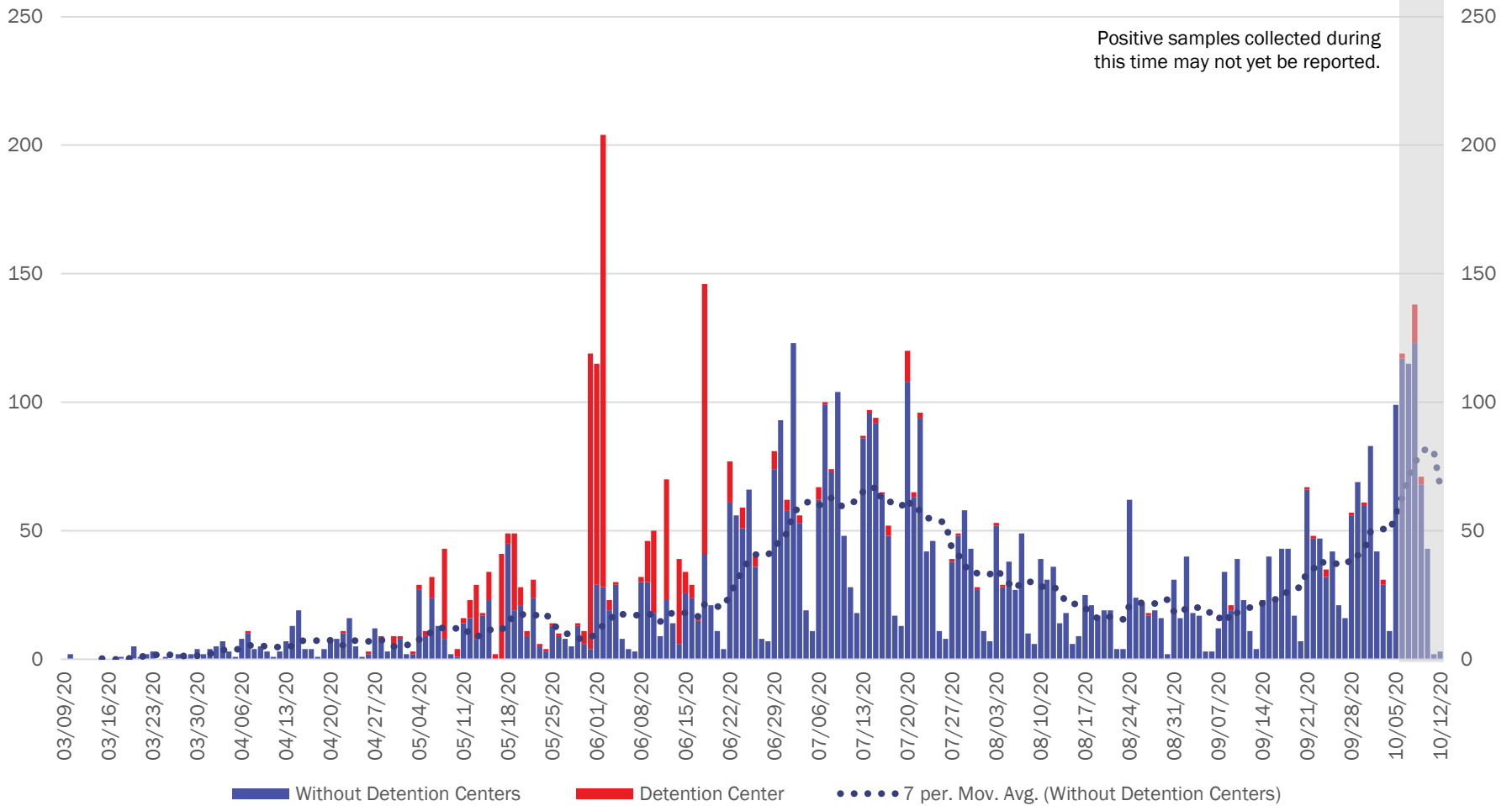


*Investing for tomorrow, delivering today.*



# Southwest Region Case Count by Collection Date with 7 Day Moving Average

## October 13, 2020



“Detention Centers” refer to federal and New Mexico Corrections Department facilities.  
 Source: Infectious Disease Epidemiology Bureau, Epidemiology and Response Division 10.13.2020, New Mexico Department of Health.

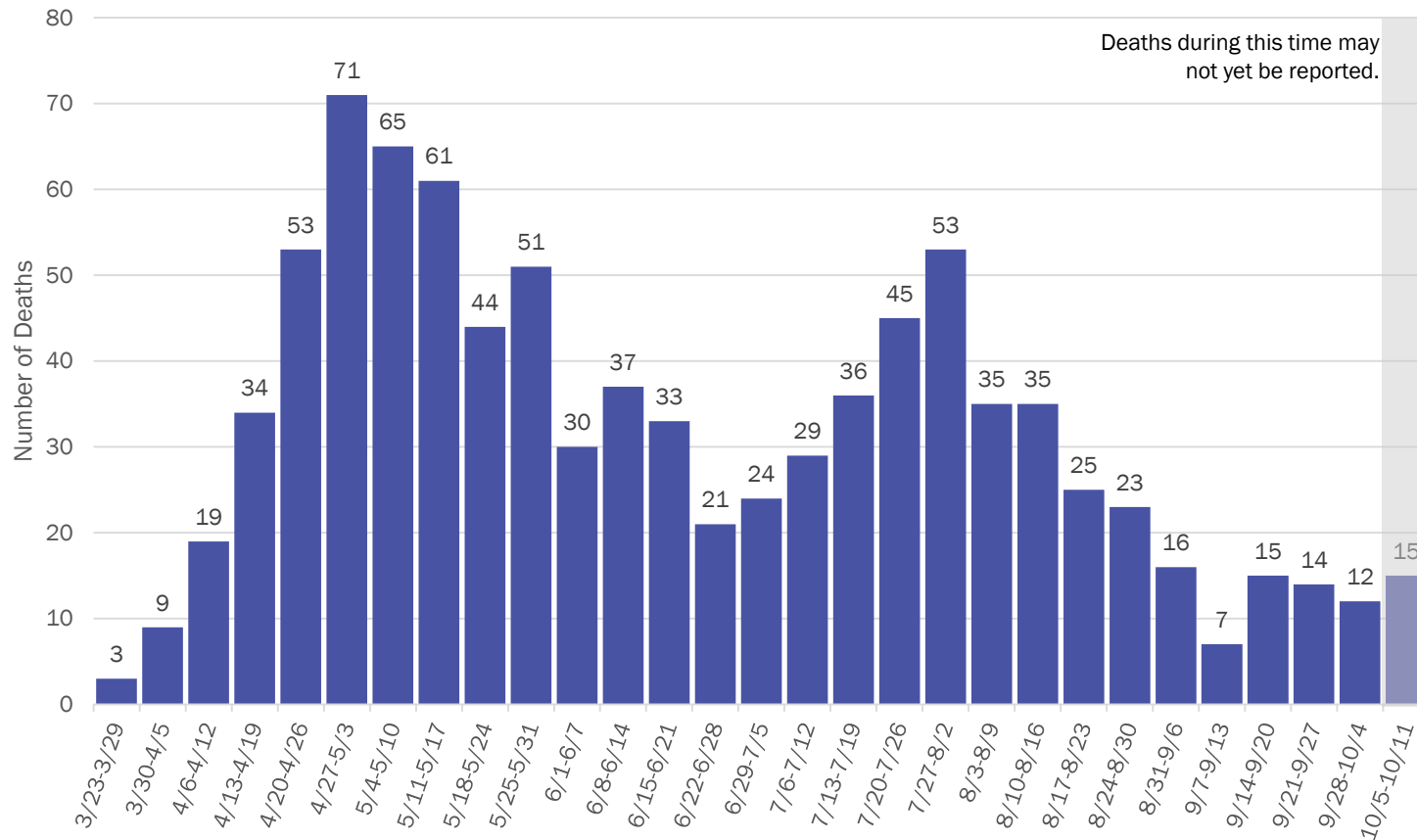


*Investing for tomorrow, delivering today.*



1190 S. St. Francis Drive • Santa Fe, NM 87505 • Phone: 505-827-2613 • Fax: 505-827-2530 • nmhealth.org

## COVID-19 Deaths by Week of Death, New Mexico



As of October 12, 2020

# New Mexico Status Updates

- Case count: Statewide, daily case counts continue to increase.
- Hospitalizations: Hospitalizations continue to rise.
- Deaths: Deaths seem to have reached a plateau.
- Contact tracing: The median time to quarantine for contacts identified last week was approximately 1.3 days.

For more information, please visit the [Epidemiology Reports](https://cv.nmhealth.org/epidemiology-reports/) page on the NMDOH COVID-19 website: <https://cv.nmhealth.org/epidemiology-reports/>

# Supplementary Slides

# Modeling Assumptions

Variable	Measured Value	Value as of 10.12.2020
R_Effective	Actual Measured Daily Value by key county	R_eff=1.3
Positive Test Multiplier	Calculated by LANL	3.3
Hospitalization and Mortality	Actual rolling value / estimated number of total infected	Medical 0.19% ICU 0.10% Vent Rate 41% of ICU Crude Case Fatality Rate 3.3%
Length of Stay	Actual rolling value / estimated number of total infected	Medical 5 days ICU 14 days ICU on Vent 14 days