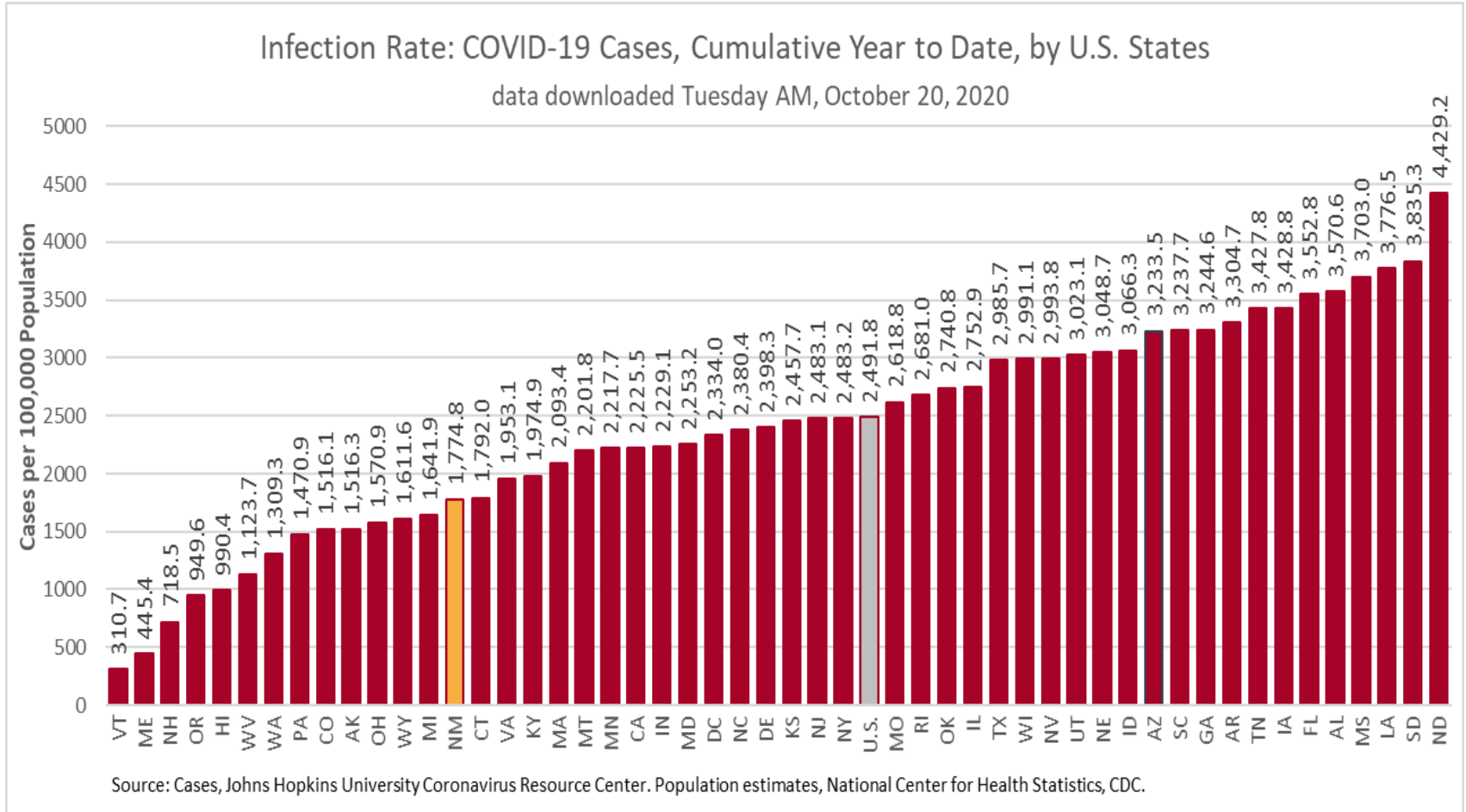


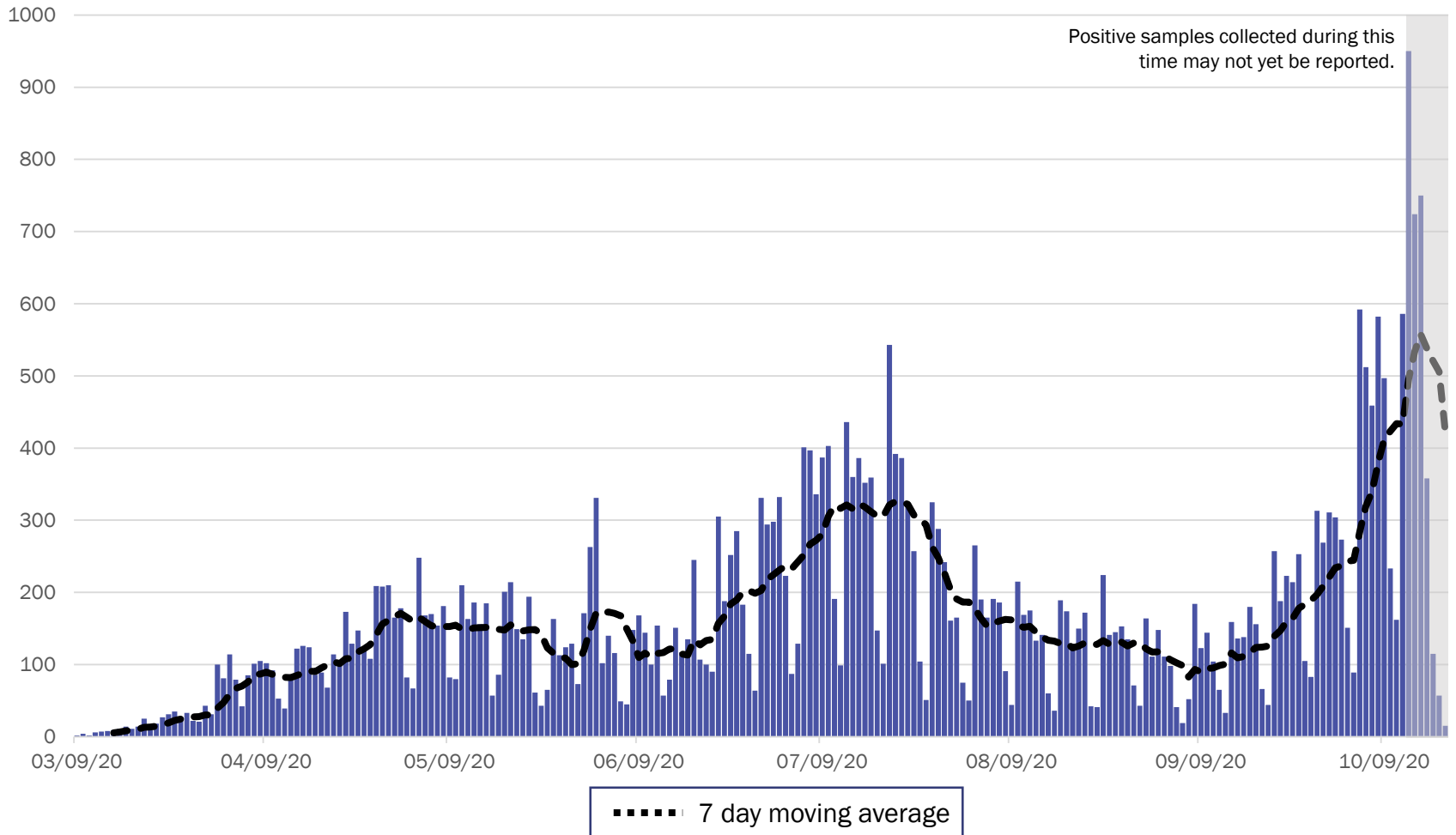
# COVID-19 in New Mexico: Epidemiologic and Modeling Update

October 20, 2020

# New Mexico has the 38<sup>th</sup> highest number of cases per 100,000 population in the United States



# New Mexico COVID-19 Cases by Date of Specimen Collection – October 20, 2020



Source: Infectious Disease Epidemiology Bureau, Epidemiology and Response Division 10.1202020, New Mexico Department of Health.

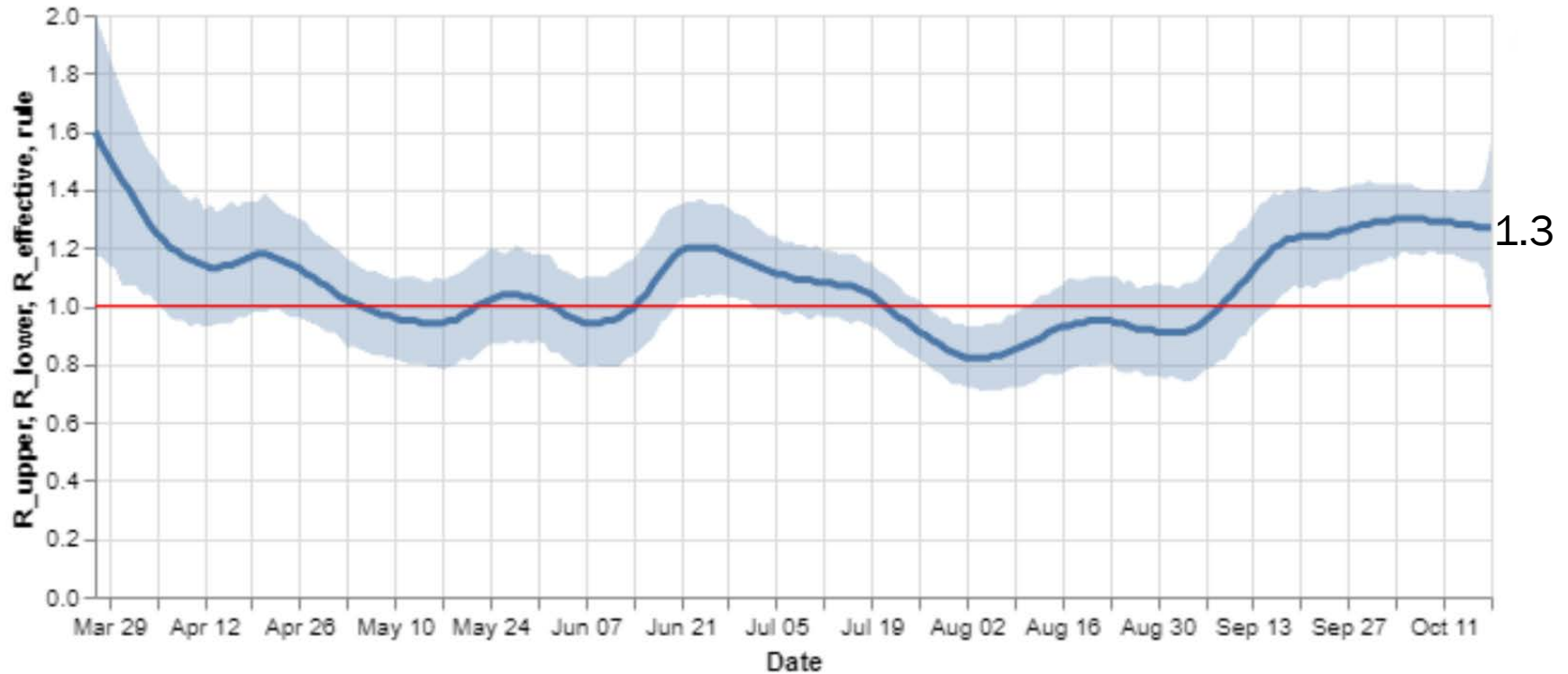


*Investing for tomorrow, delivering today.*

1190 S. St. Francis Drive • Santa Fe, NM 87505 • Phone: 505-827-2613 • Fax: 505-827-2530 • nmhealth.org

# Statewide R-effective remains at 1.3.

## R\_effective over time, STATE



Courtesy of Presbyterian Healthcare Services – October 19, 2020.

**Key**

Low Level Endemic  
<1.0

Approaching Low Level Endemic  
1.0-1.05

Requiring further mitigation >1.05

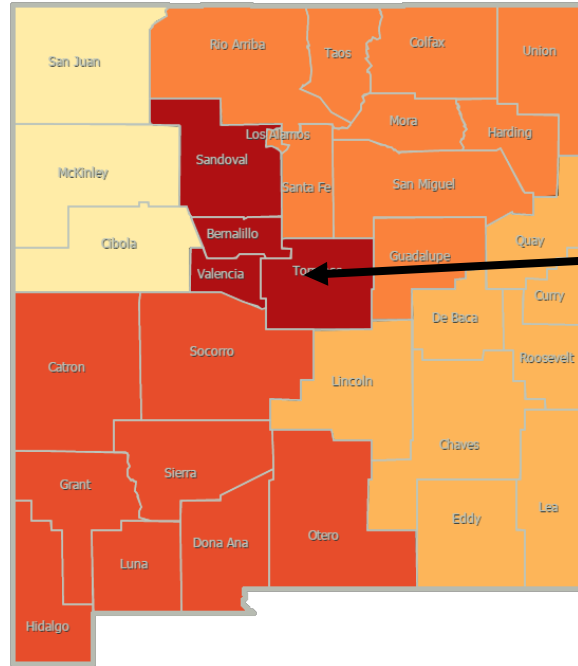
**Northwest**  
**R\_effective 1.2 ↑**

**Northeast**  
**R\_effective 1.3 ↑**

**Metro**  
**R\_effective 1.3 ↓**

**Southwest**  
**R\_effective 1.3 ↑**

**Southeast**  
**R\_effective 1.1 ↓**



As of October 12, 2020

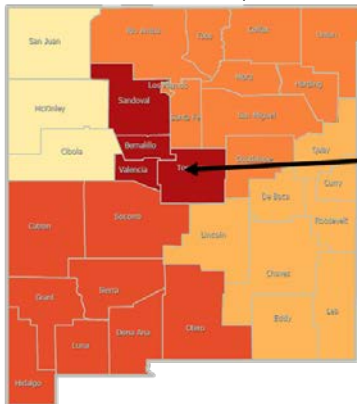
**Northwest**  
**R\_effective 1.1 ↑**

**Northeast**  
**R\_effective 1.2 ↑**

**Metro**  
**R\_effective 1.4 ↑**

**Southwest**  
**R\_effective 1.2 =**

**Southeast**  
**R\_effective 1.2 ↑**

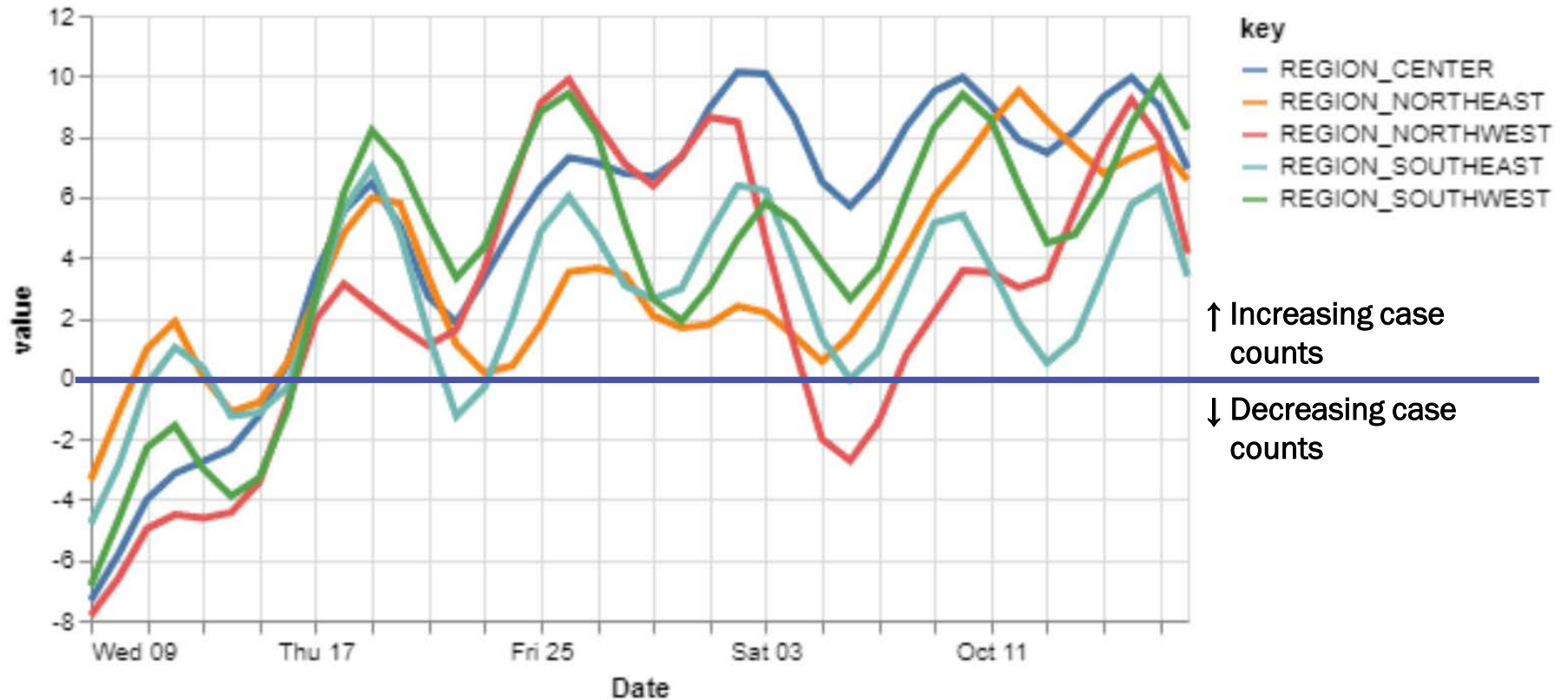


Region	R-effective	95% Confidence Interval
State	1.3	[1.0, 1.6]
Metro	1.3	[0.9, 1.8]
Northeast	1.3	[0.3, 2.7]
Northwest	1.2	[0.0, 2.3]
Southeast	1.1	[0.6, 1.8]
Southwest	1.3	[0.8, 1.9]

Courtesy of Presbyterian Healthcare Services – October 19, 2020.

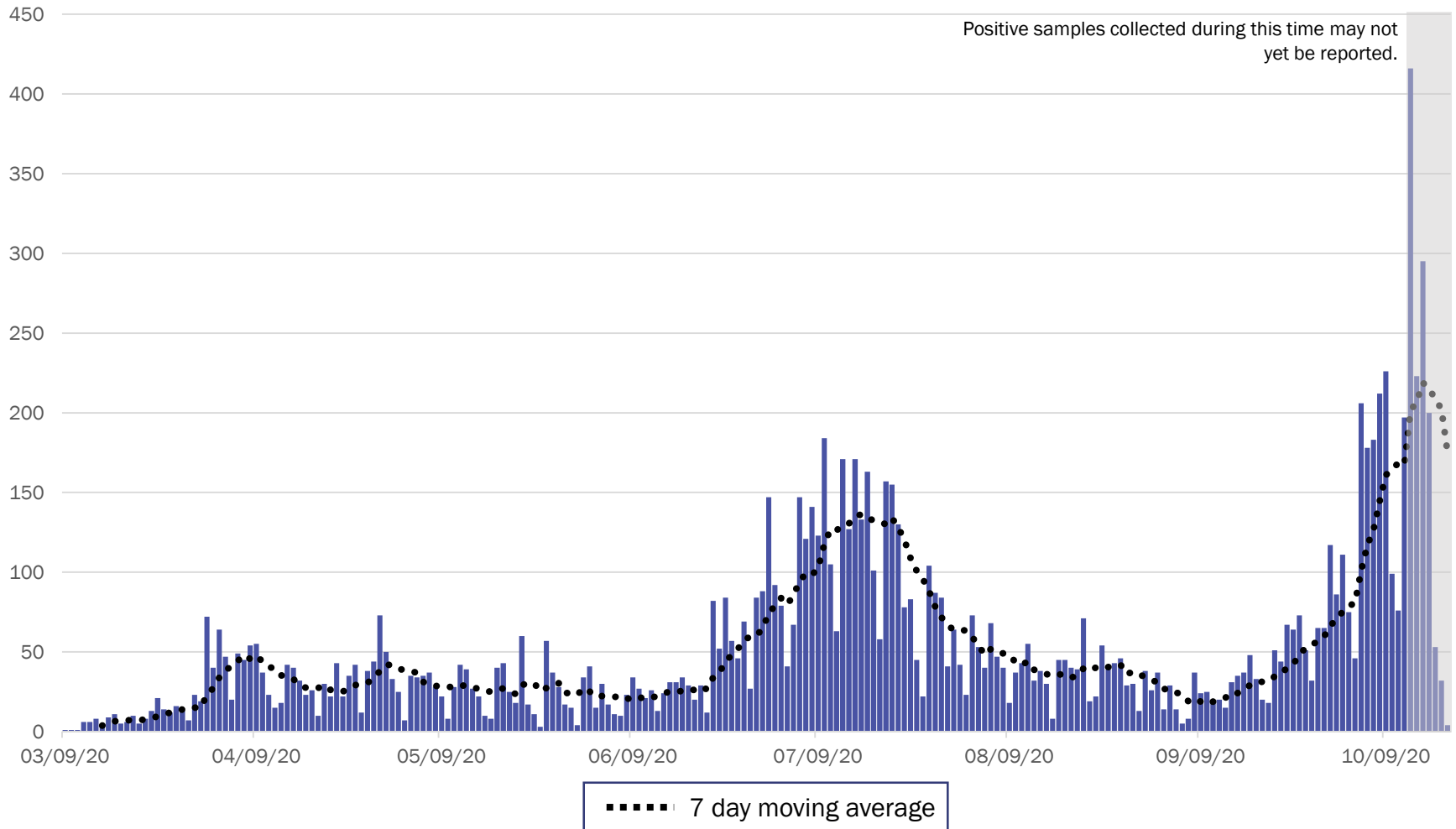
# All regions have increasing daily case counts.

## 14-day relative growth rate (%), Regions



Courtesy of Presbyterian Healthcare Services – October 19, 2020.

## Metro Region Case Count by Collection Date with 7 Day Moving Average October 20, 2020



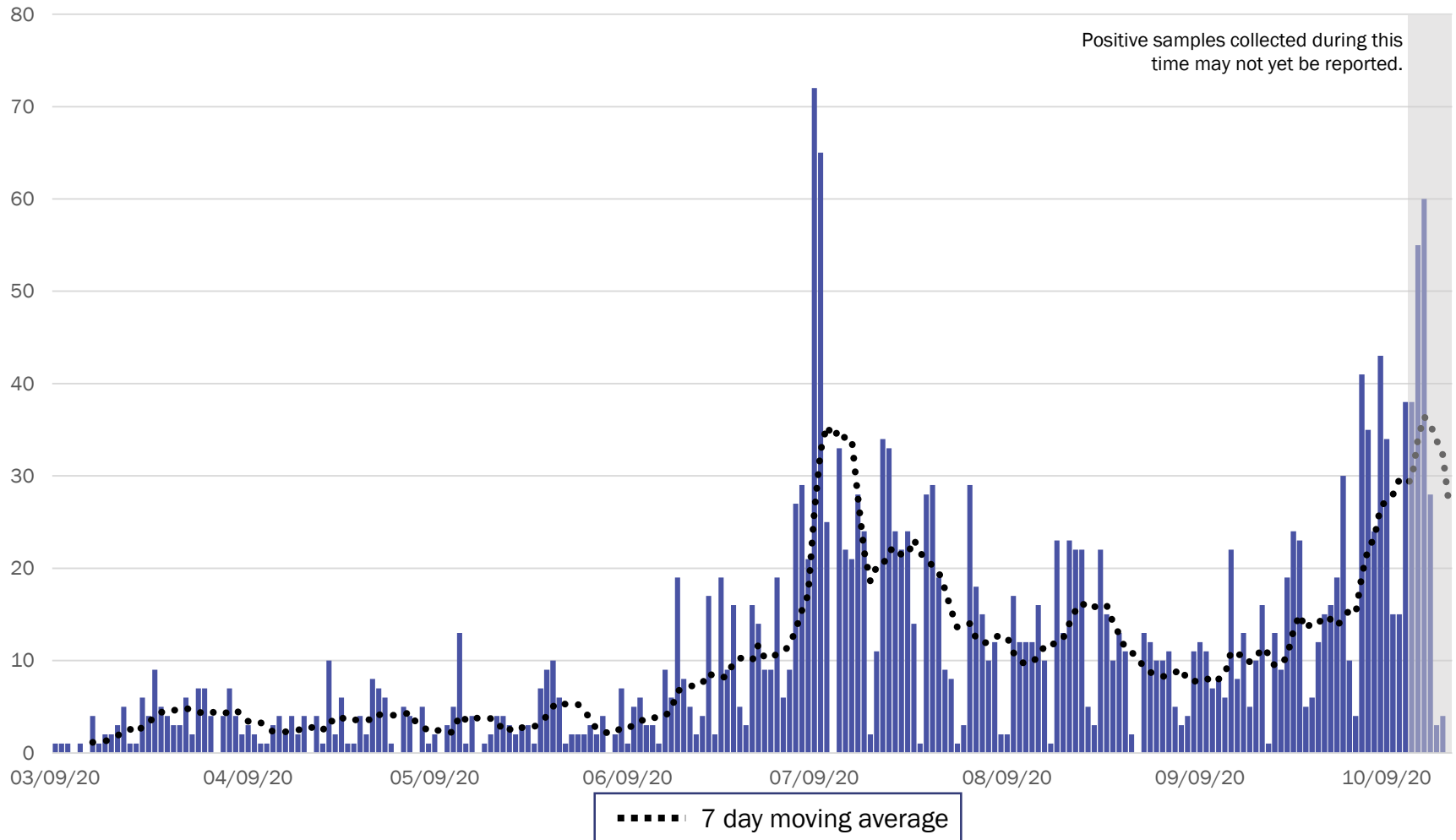
Source: Infectious Disease Epidemiology Bureau, Epidemiology and Response Division 10.20.2020, New Mexico Department of Health.



*Investing for tomorrow, delivering today.*

1190 S. St. Francis Drive • Santa Fe, NM 87505 • Phone: 505-827-2613 • Fax: 505-827-2530 • nmhealth.org

# Northeast Region Case Count by Collection Date with 7 Day Moving Average October 20, 2020



Source: Infectious Disease Epidemiology Bureau, Epidemiology and Response Division 10.20.2020, New Mexico Department of Health.

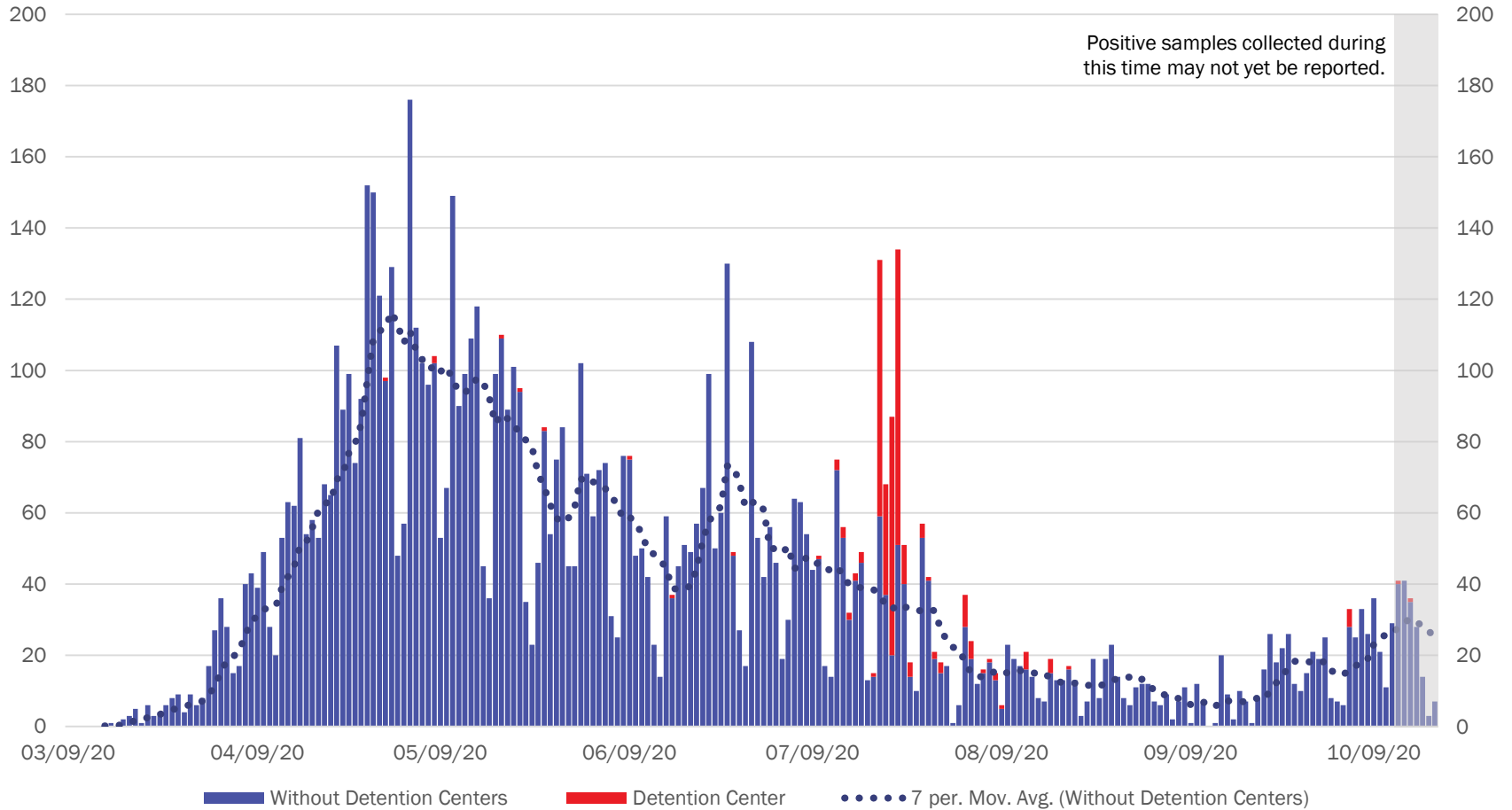


*Investing for tomorrow, delivering today.*

1190 S. St. Francis Drive • Santa Fe, NM 87505 • Phone: 505-827-2613 • Fax: 505-827-2530 • nmhealth.org



## Northwest Region Case Count by Collection Date with 7 Day Moving Average October 20, 2020



“Detention Centers” refer to federal and New Mexico Corrections Department facilities.

Source: Infectious Disease Epidemiology Bureau, Epidemiology and Response Division 10.20.2020, New Mexico Department of Health.

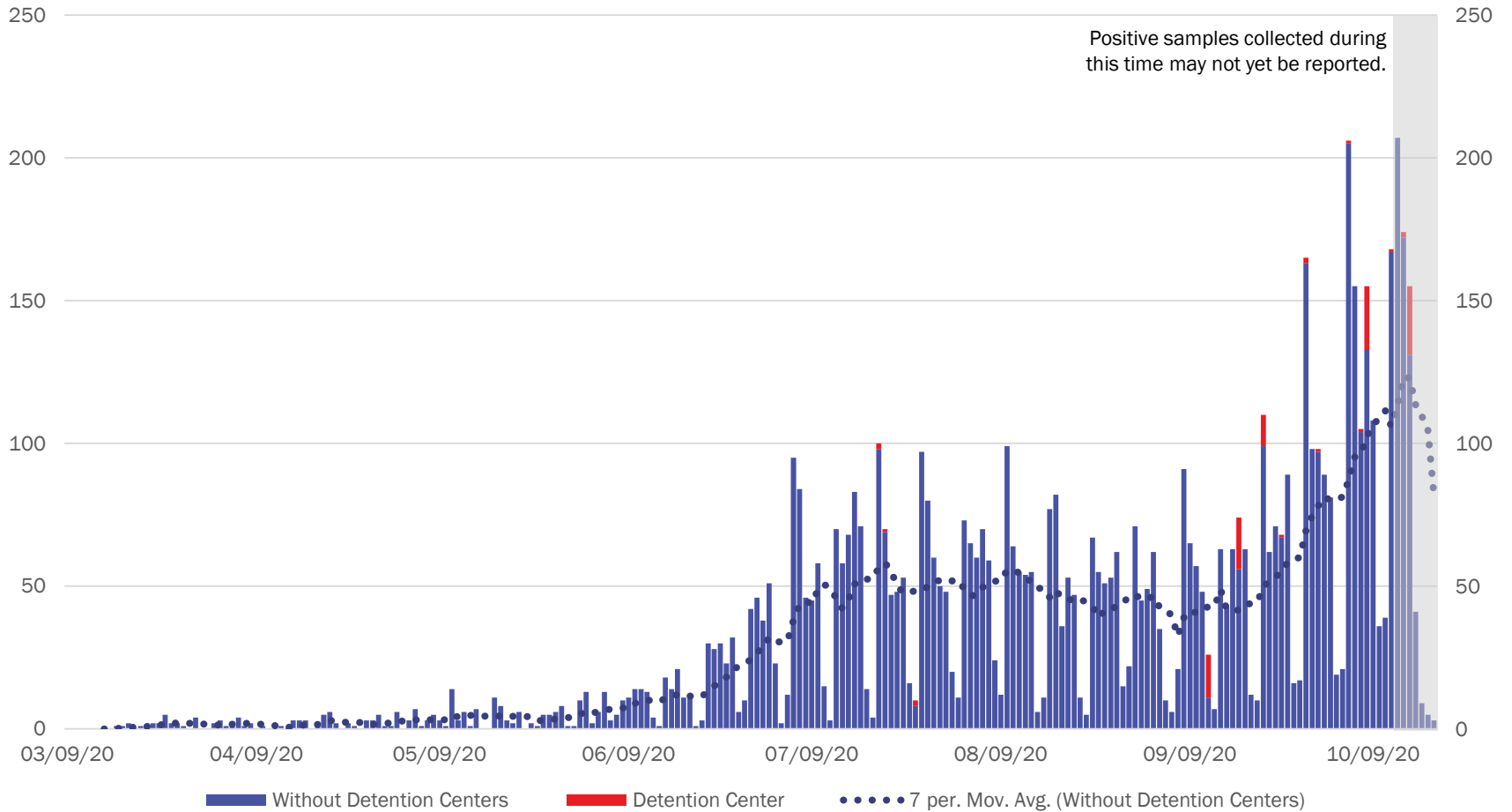


*Investing for tomorrow, delivering today.*



1190 S. St. Francis Drive • Santa Fe, NM 87505 • Phone: 505-827-2613 • Fax: 505-827-2530 • nmhealth.org

## Southeast Region Case Count by Collection Date with 7 Day Moving Average October 20, 2020



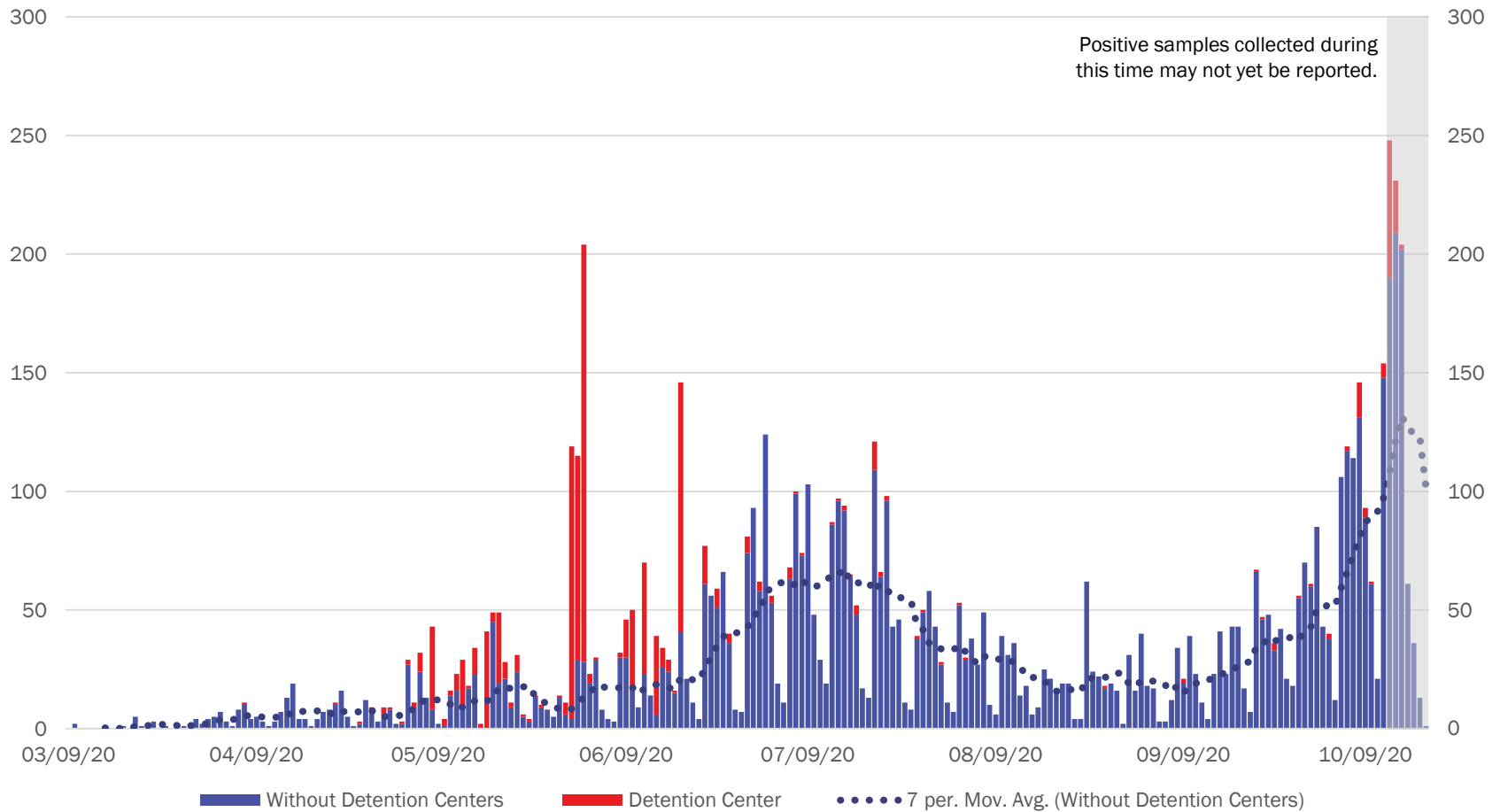
“Detention Centers” refer to federal and New Mexico Corrections Department facilities.  
 Source: Infectious Disease Epidemiology Bureau, Epidemiology and Response Division 10.20.2020, New Mexico Department of Health.



*Investing for tomorrow, delivering today.*



## Southwest Region Case Count by Collection Date with 7 Day Moving Average October 20, 2020



“Detention Centers” refer to federal and New Mexico Corrections Department facilities.

Source: Infectious Disease Epidemiology Bureau, Epidemiology and Response Division 10.20.2020, New Mexico Department of Health.



*Investing for tomorrow, delivering today.*

# New Mexico Status Updates

- Case count: Statewide, daily case counts continue to increase.
- Hospitalizations: Hospitalizations continue to rise.
- Deaths: Deaths seem to have reached a plateau.
- Contact tracing: The median time to quarantine for contacts identified last week was approximately 2.7 days.

For more information, please visit the [Epidemiology Reports](https://cv.nmhealth.org/epidemiology-reports/) page on the NMDOH COVID-19 website: <https://cv.nmhealth.org/epidemiology-reports/>

# Supplementary Slides

# Modeling Assumptions

Variable	Measured Value	Value as of 10.19.2020
R_Effective	Actual Measured Daily Value by key county	R_eff=1.3
Positive Test Multiplier	Calculated by LANL	3.2
Hospitalization and Mortality	Actual rolling value / estimated number of total infected	Medical 0.25% ICU 0.12% Vent Rate 45% of ICU Crude Case Fatality Rate 3.2%
Length of Stay	Actual rolling value / estimated number of total infected	Medical 5 days ICU 14 days ICU on Vent 14 days