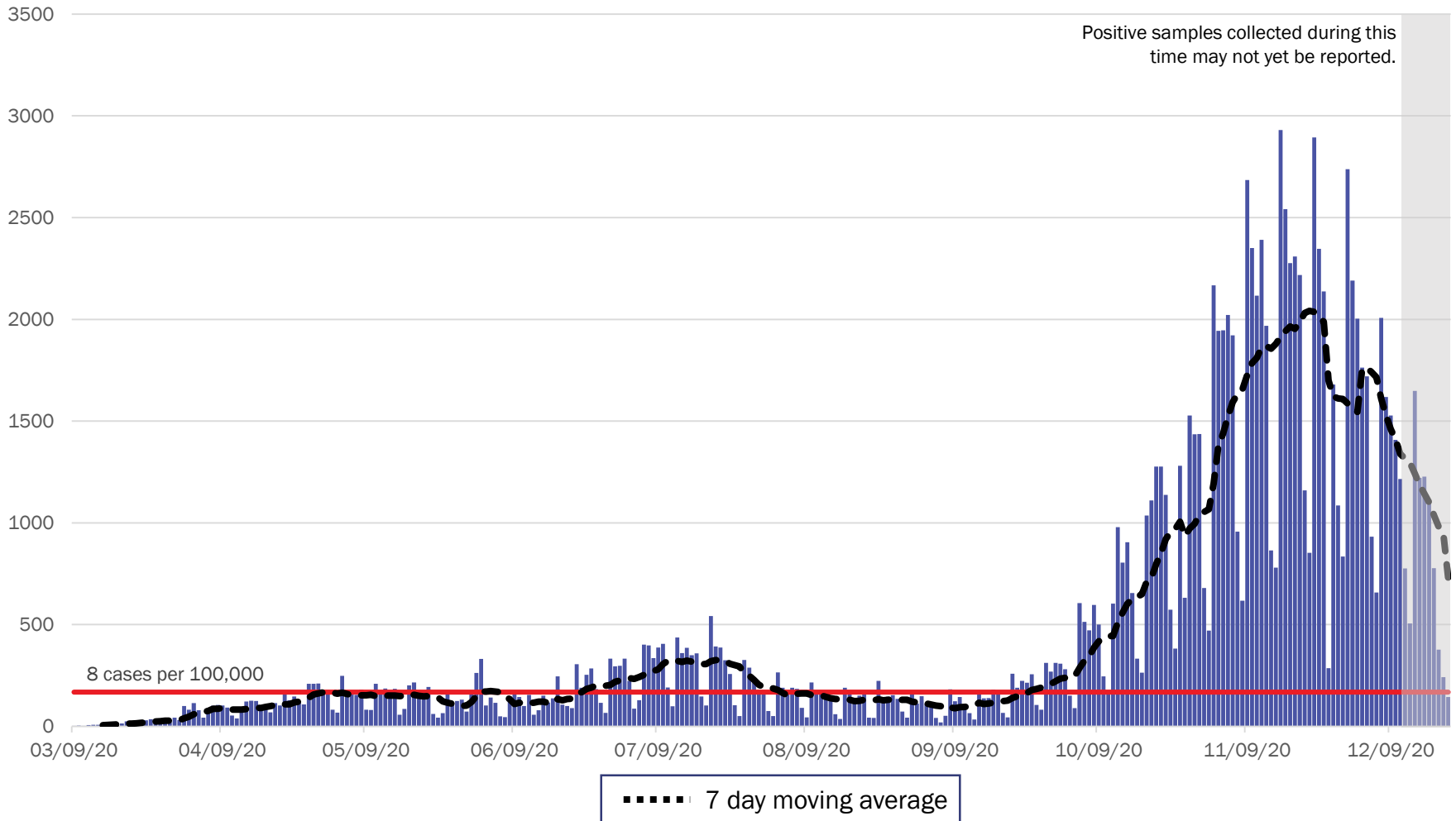


COVID-19 in New Mexico: Epidemiologic and Modeling Update

December 22, 2020

New Mexico COVID-19 Cases by Date of Specimen Collection – December 22, 2020



Source: Infectious Disease Epidemiology Bureau, Epidemiology and Response Division 12.22.2020, New Mexico Department of Health.

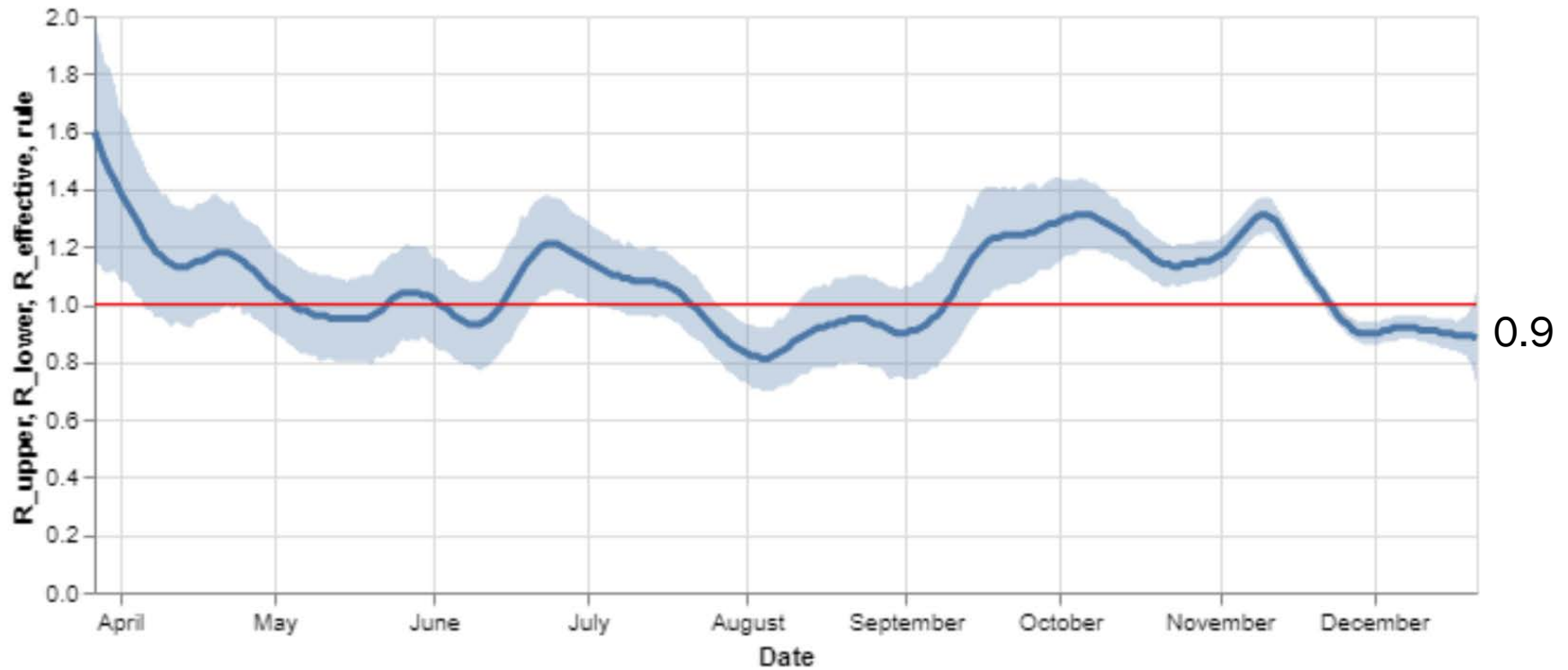


Investing for tomorrow, delivering today.

1190 S. St. Francis Drive • Santa Fe, NM 87505 • Phone: 505-827-2613 • Fax: 505-827-2530 • nmhealth.org

Statewide R-effective remains at 0.9.

R_effective over time, STATE



0.9

Courtesy of Presbyterian Healthcare Services – December 22, 2020.

Key

Low Level Endemic
<1.0

Approaching Low
Level Endemic
1.0

Requiring further
mitigation **>1.0**

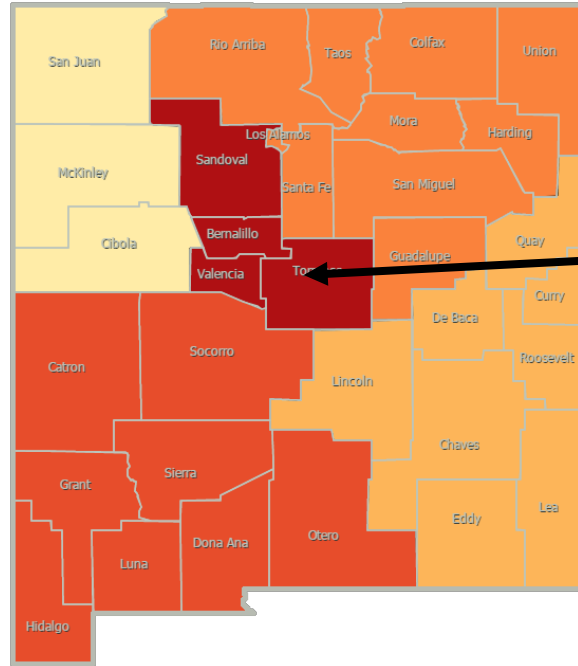
Northwest
R_effective 1.0 ↑

Northeast
R_effective 0.9 ↓

Metro
R_effective 0.9 ↑

Southwest
R_effective 0.9 ↑

Southeast
R_effective 0.8 ↓



As of December 15, 2020

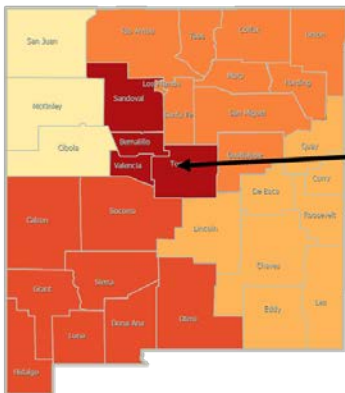
Northwest
R_effective 0.9 ↑

Northeast
R_effective 1.0 ↑

Metro
R_effective 0.8 =

Southwest
R_effective 0.8 =

Southeast
R_effective 0.9 ↑

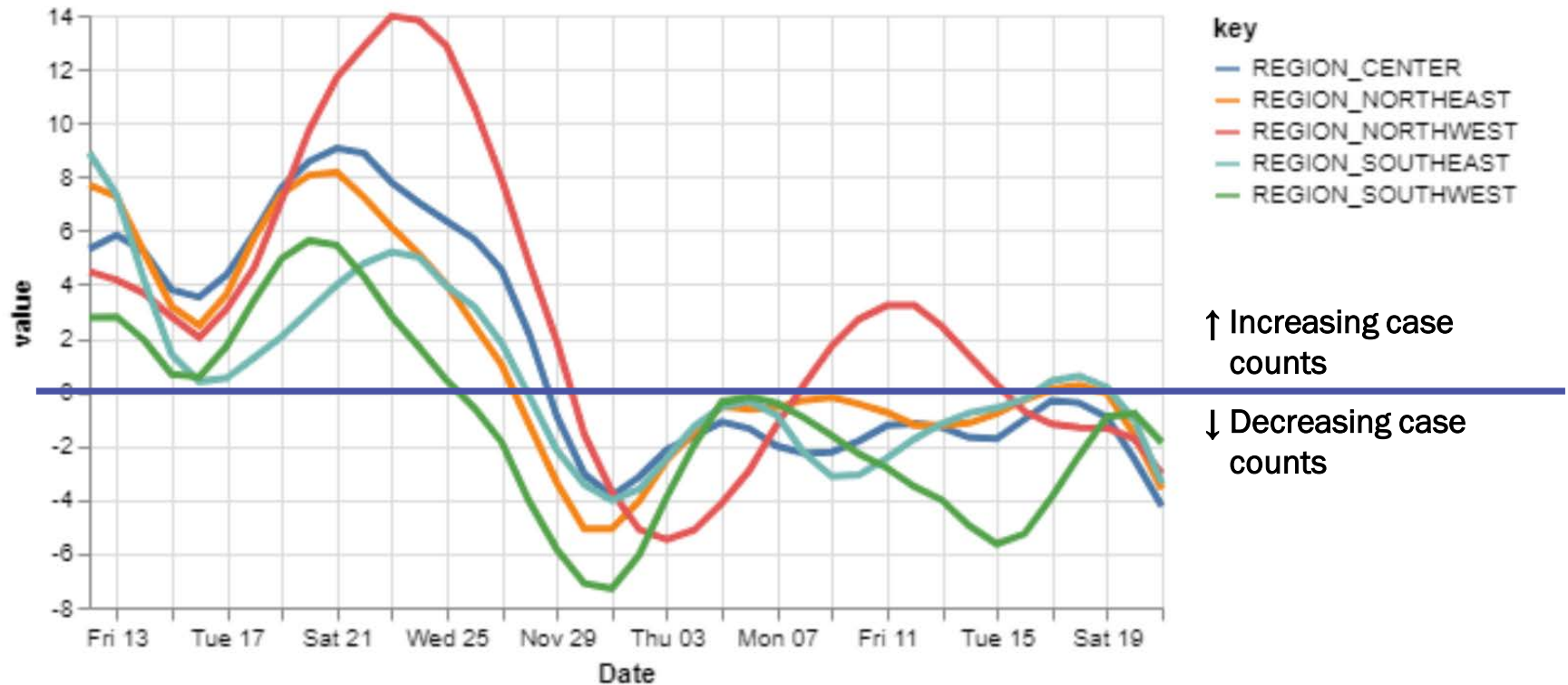


Region	R-effective	95% Confidence Interval
State	0.9	[0.7, 1.1]
Metro	0.9	[0.6, 1.1]
Northeast	0.9	[0.5, 1.4]
Northwest	1.0	[0.6, 1.4]
Southeast	0.8	[0.5, 1.3]
Southwest	0.9	[0.5, 1.4]

Courtesy of Presbyterian Healthcare Services – December 22, 2020.

All five regions have growth rates less than 0.

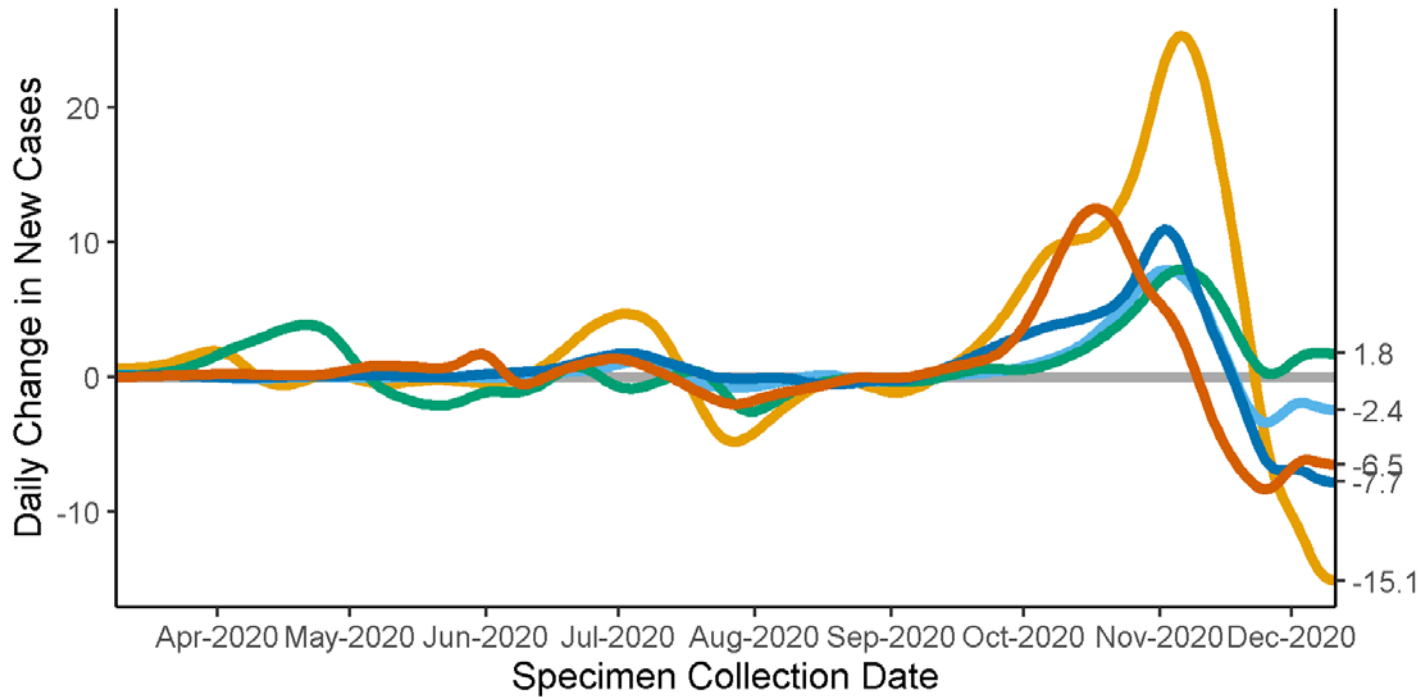
14-day relative growth rate (%), Regions



Courtesy of Presbyterian Healthcare Services – December 22, 2020.

Epidemic Growth Acceleration

Daily Change in New COVID-19 Cases, by New Mexico Region, as of December 22, 2020

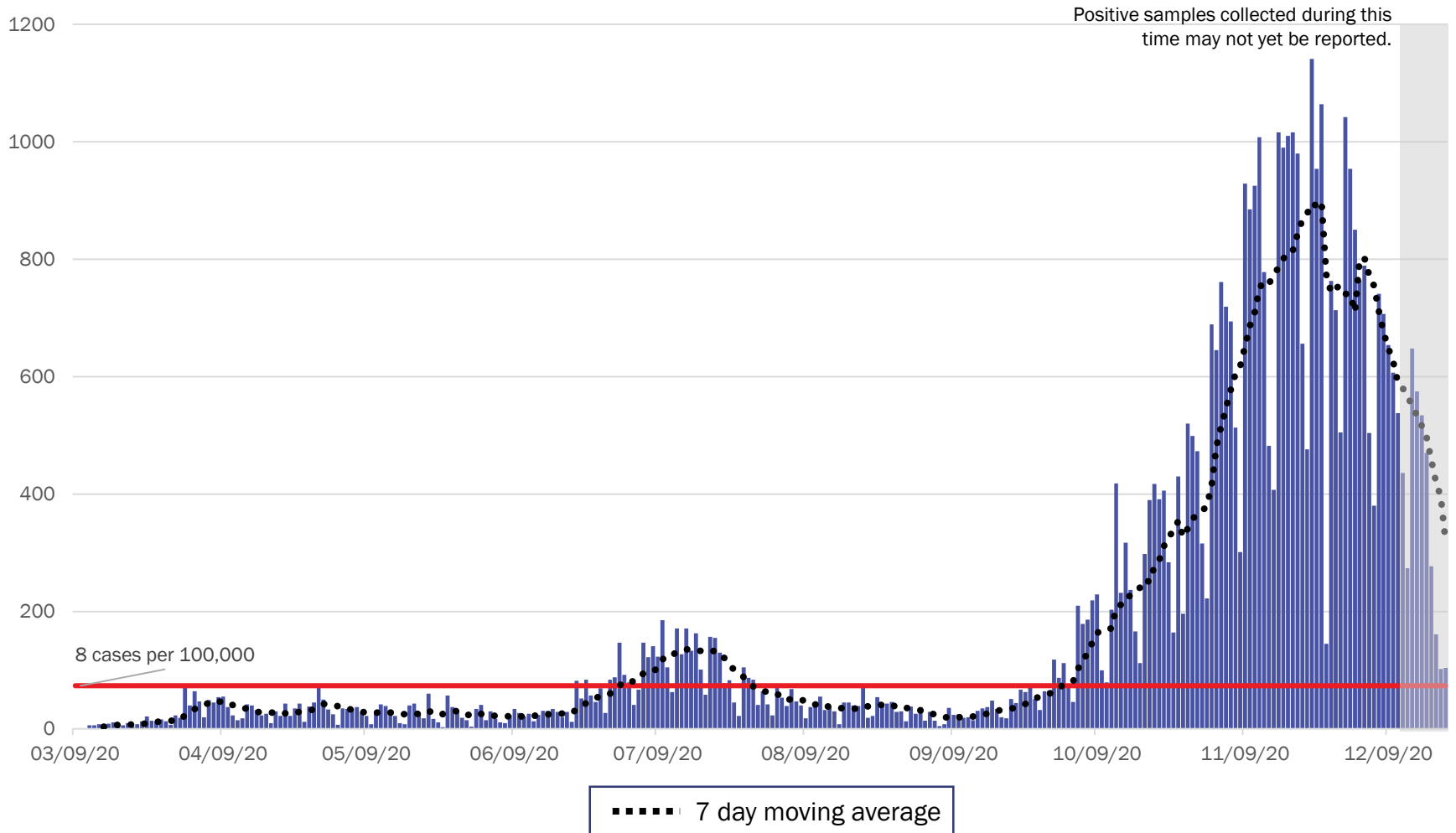


Regions ■ Metro ■ Northeast ■ Northwest ■ Southeast ■ Southwest

Assumes a 10 day lag in result reporting.

Source: Infectious Disease Epidemiology Bureau, Epidemiology and Response Division 12.22.2020, New Mexico Department of Health.

Metro Region Case Count by Collection Date with 7 Day Moving Average December 22, 2020



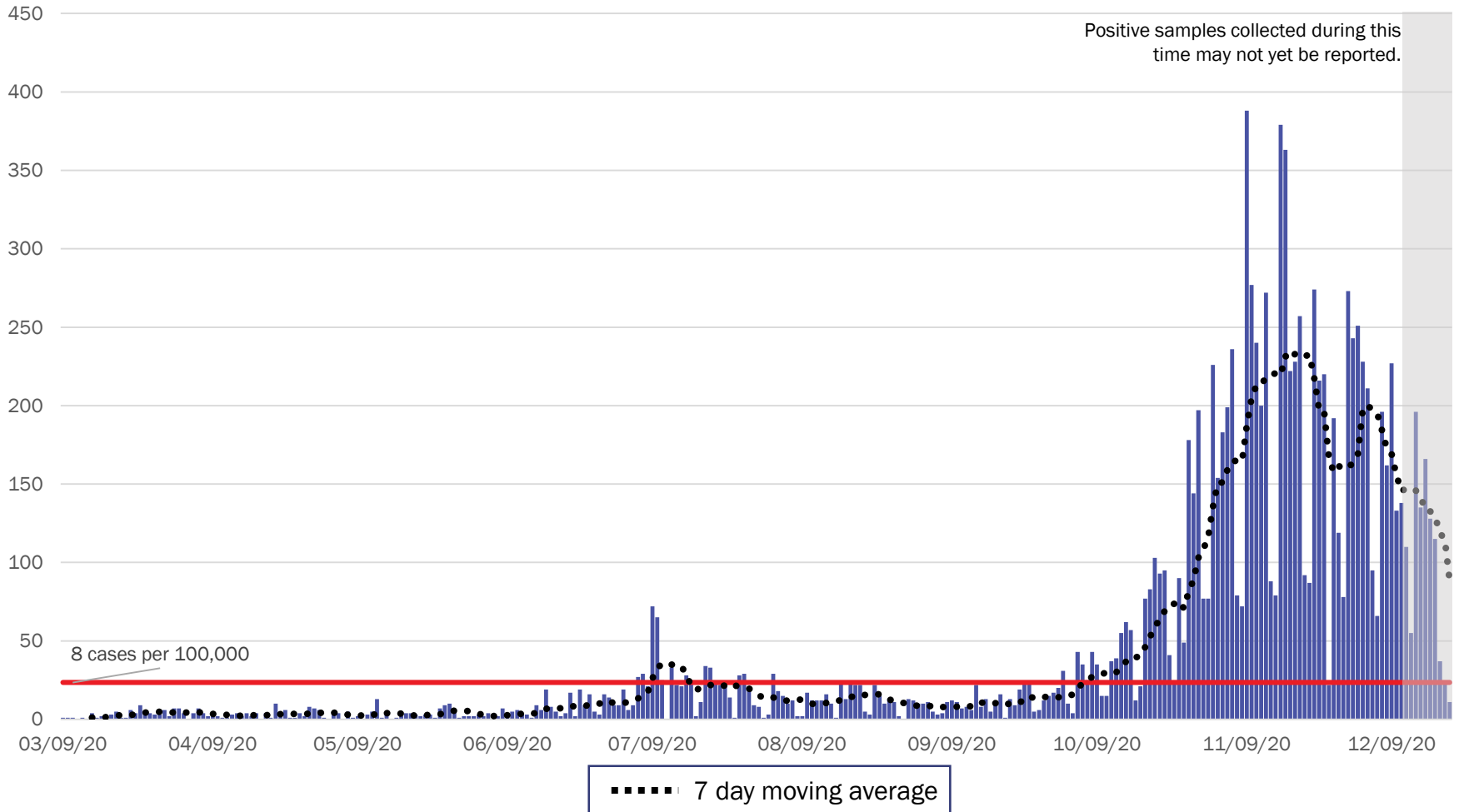
Source: Infectious Disease Epidemiology Bureau, Epidemiology and Response Division 12.22.2020, New Mexico Department of Health.



Investing for tomorrow, delivering today.

1190 S. St. Francis Drive • Santa Fe, NM 87505 • Phone: 505-827-2613 • Fax: 505-827-2530 • nmhealth.org

Northeast Region Case Count by Collection Date with 7 Day Moving Average December 22, 2020



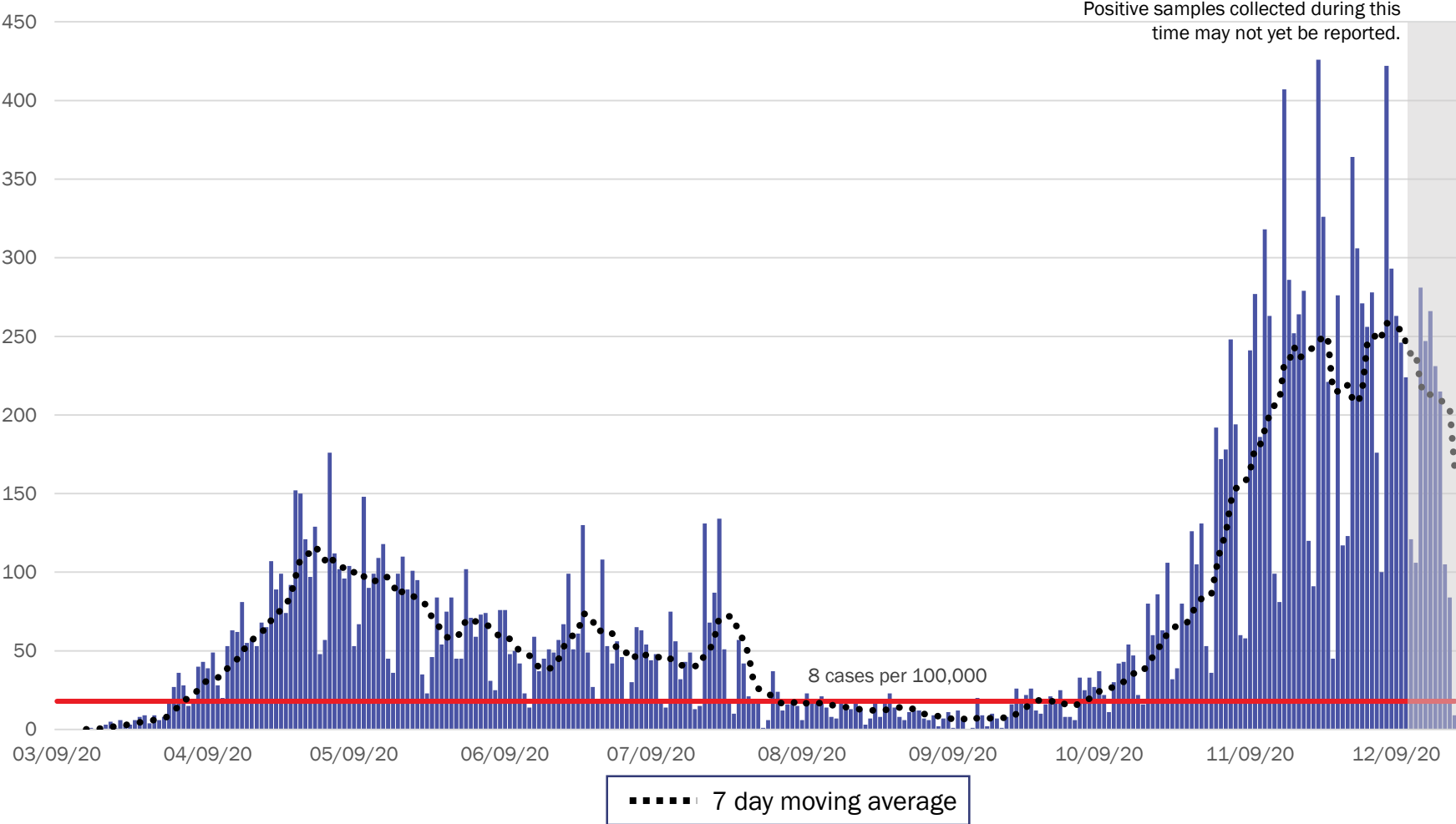
Source: Infectious Disease Epidemiology Bureau, Epidemiology and Response Division 12.22.2020, New Mexico Department of Health.



Investing for tomorrow, delivering today.

1190 S. St. Francis Drive • Santa Fe, NM 87505 • Phone: 505-827-2613 • Fax: 505-827-2530 • nmhealth.org

Northwest Region Case Count by Collection Date with 7 Day Moving Average December 22, 2020



Source: Infectious Disease Epidemiology Bureau, Epidemiology and Response Division 12.22.2020, New Mexico Department of Health.

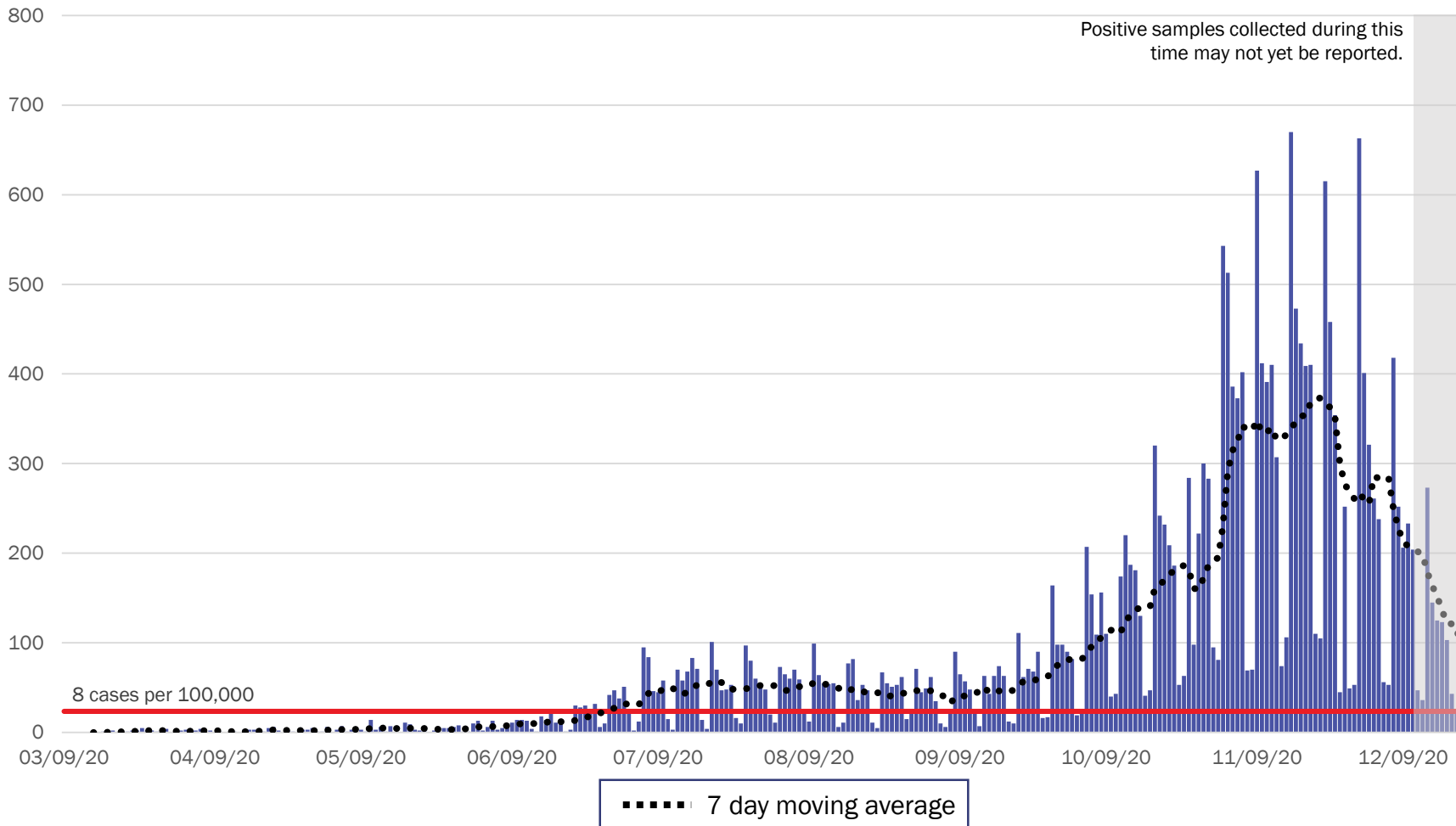


Investing for tomorrow, delivering today.



1190 S. St. Francis Drive • Santa Fe, NM 87505 • Phone: 505-827-2613 • Fax: 505-827-2530 • nmhealth.org

Southeast Region Case Count by Collection Date with 7 Day Moving Average December 22, 2020



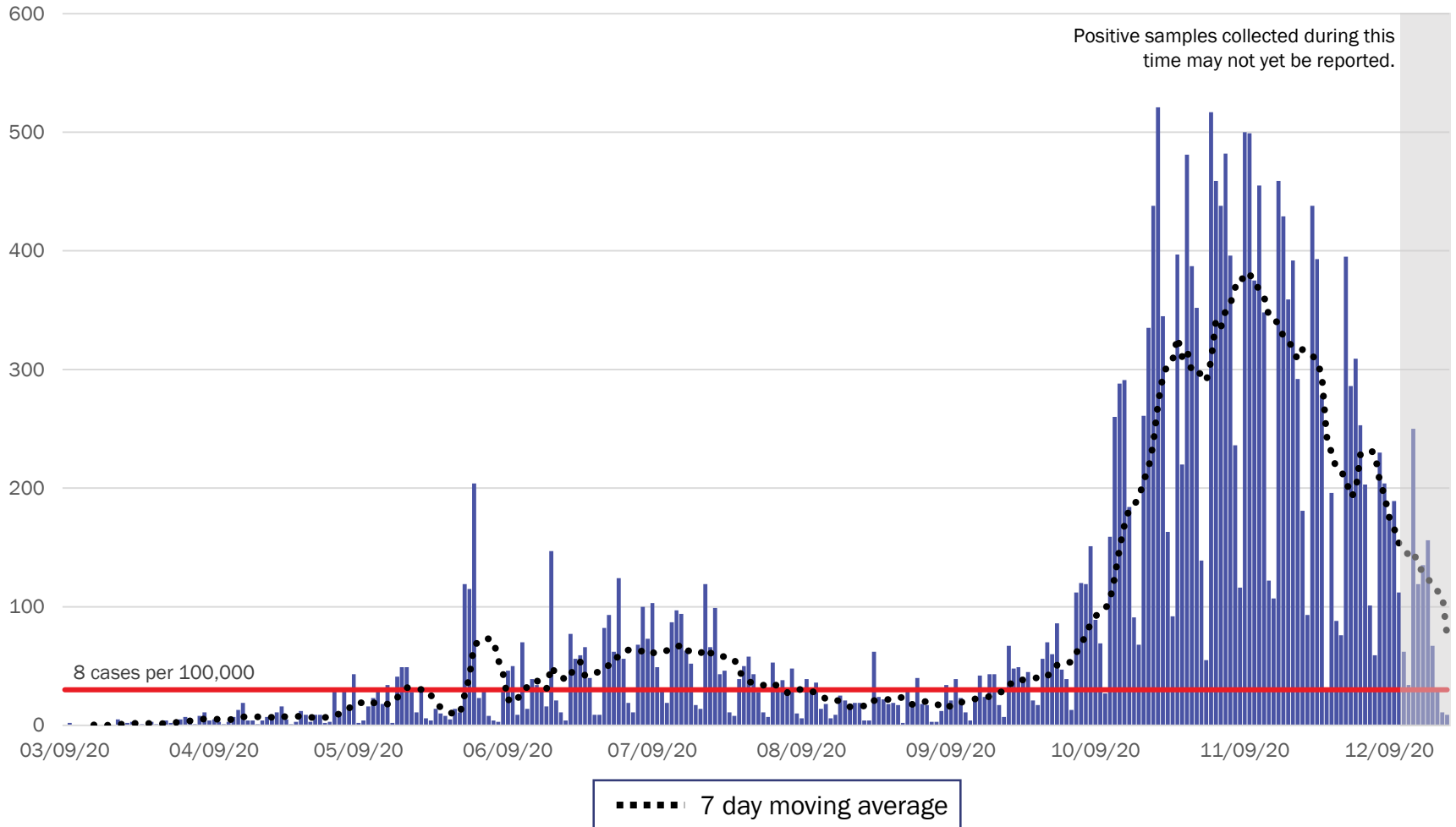
Source: Infectious Disease Epidemiology Bureau, Epidemiology and Response Division 12.22.2020, New Mexico Department of Health.



Investing for tomorrow, delivering today.

1190 S. St. Francis Drive • Santa Fe, NM 87505 • Phone: 505-827-2613 • Fax: 505-827-2530 • nmhealth.org

Southwest Region Case Count by Collection Date with 7 Day Moving Average December 22, 2020



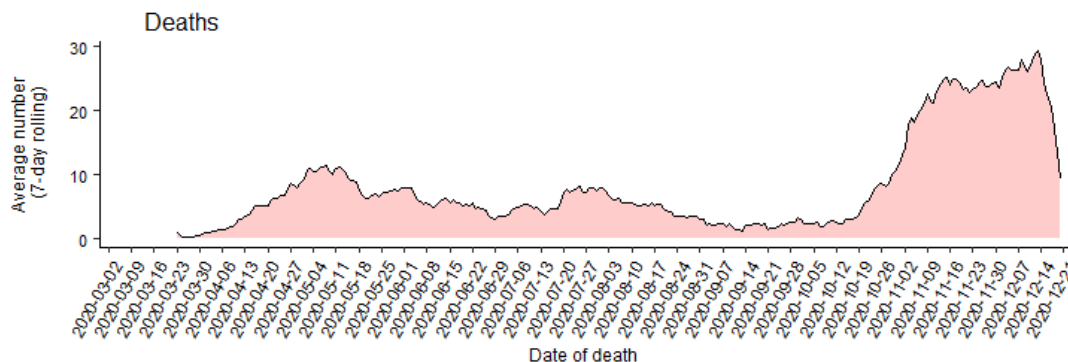
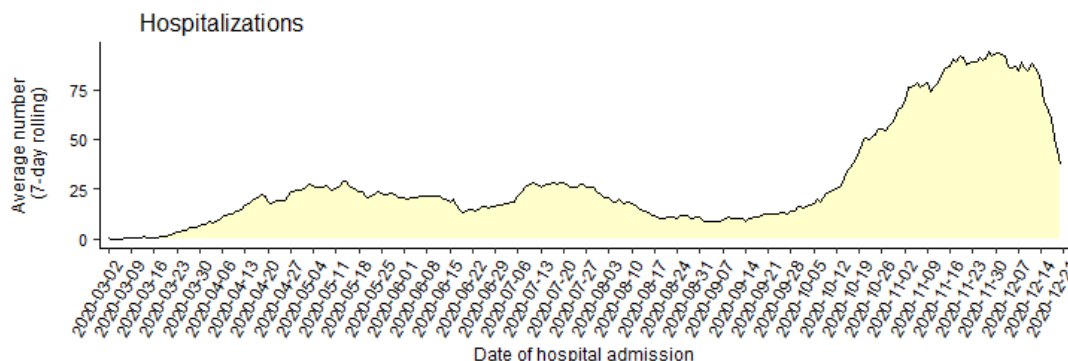
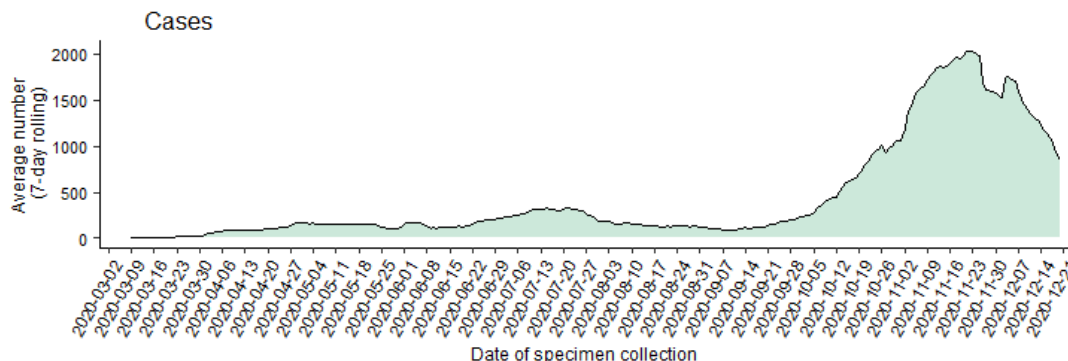
Source: Infectious Disease Epidemiology Bureau, Epidemiology and Response Division 12.22.2020, New Mexico Department of Health.



Investing for tomorrow, delivering today.

1190 S. St. Francis Drive • Santa Fe, NM 87505 • Phone: 505-827-2613 • Fax: 505-827-2530 • nmhealth.org

Average number (7-day rolling average) of cases, hospitalizations, and deaths over time



Note: Cases, hospitalizations, and deaths may not yet be reported in the last 7-14 days.

As of 12/21/20

New Mexico Status Updates

- Case count: Statewide, the daily case counts may be decreasing, but this should be interpreted cautiously in the face of high percent positivity.
- Hospitalizations: Hospitalizations remain high.
- Deaths: Weekly COVID-19 deaths remain high.

For more information, please visit the [Epidemiology Reports](https://cv.nmhealth.org/epidemiology-reports/) page on the NMDOH COVID-19 website: <https://cv.nmhealth.org/epidemiology-reports/>

Supplementary Slides

Modeling Assumptions

Variable	Measured Value	Value as of 12.22.2020
R_Effective	Actual Measured Daily Value by key county	R_eff=0.9
Positive Test Multiplier	Calculated by LANL	2.2
Hospitalization and Mortality	Actual rolling value / estimated number of total infected	Medical 0.39% ICU 0.15% Vent Rate 66% of ICU Crude Case Fatality Rate 2.2%
Length of Stay	Actual rolling value / estimated number of total infected	Medical 5 days ICU 14 days ICU on Vent 14 days