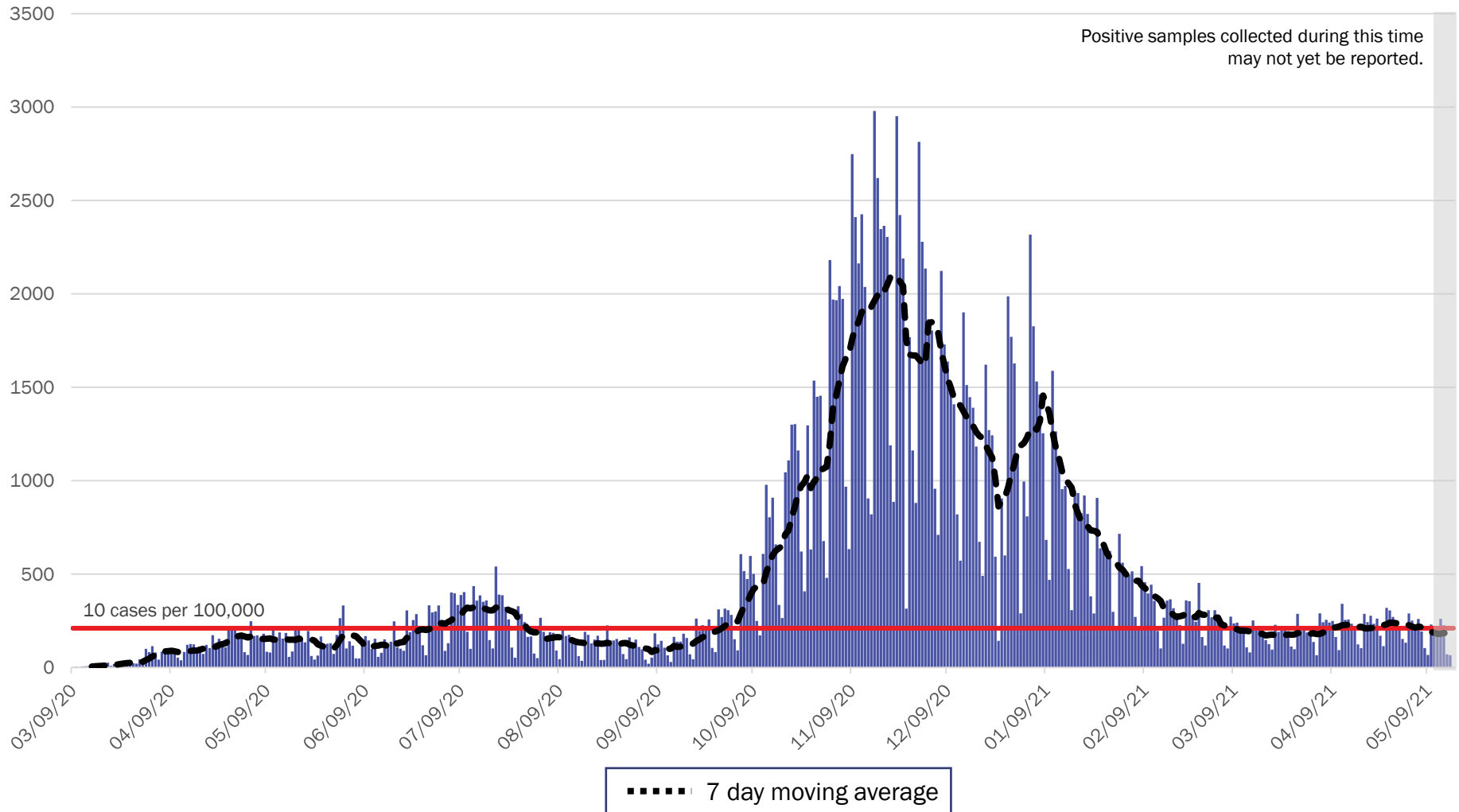


COVID-19 in New Mexico: Epidemiologic and Modeling Update

May 18, 2021

New Mexico COVID-19 Cases by Date of Specimen Collection

May 17, 2021



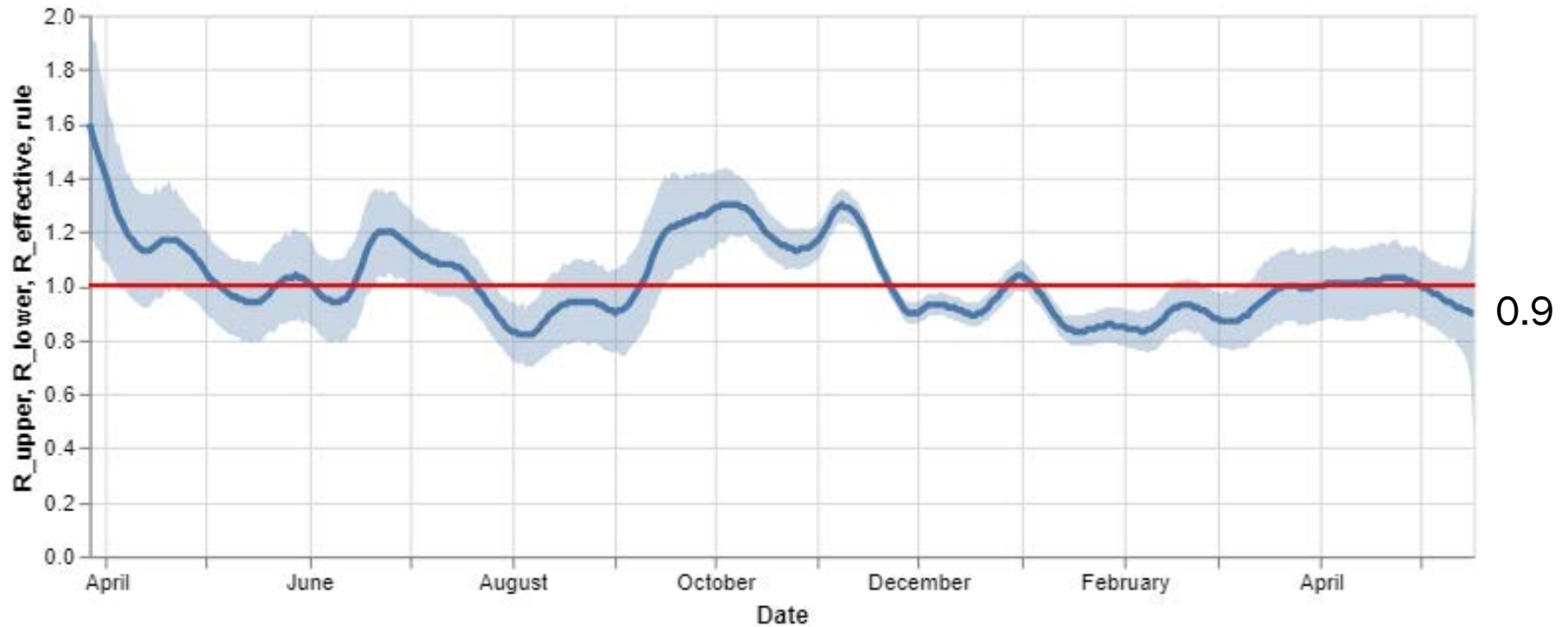
Source: Infectious Disease Epidemiology Bureau, Epidemiology and Response Division 5.17.2021, New Mexico Department of Health.



Investing for tomorrow, delivering today.

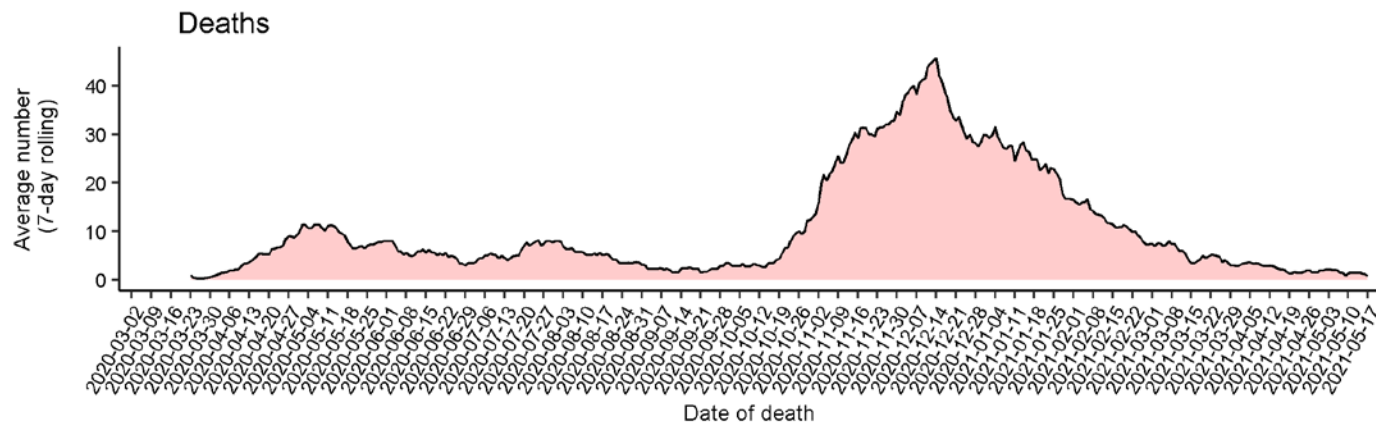
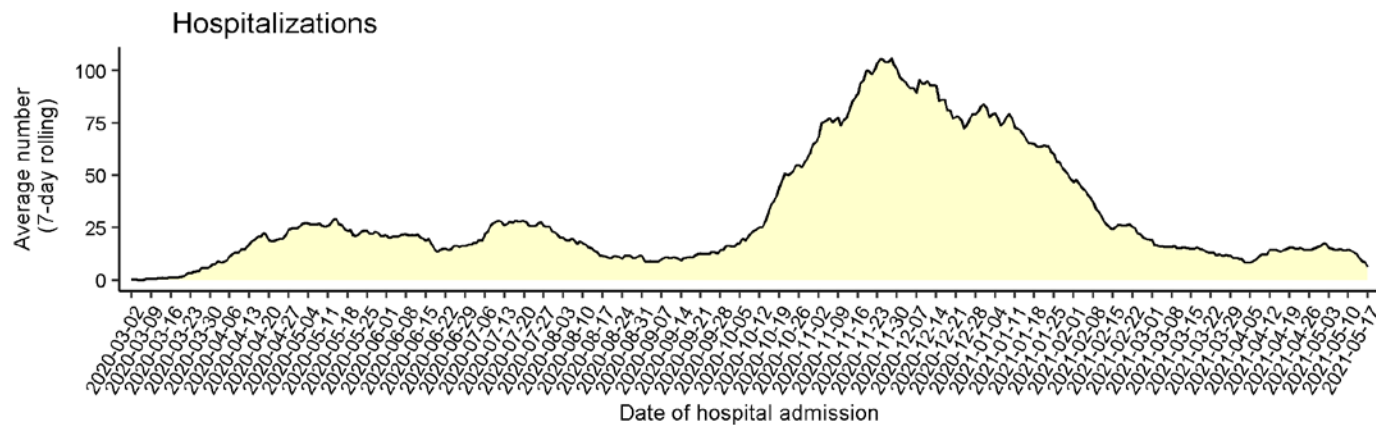
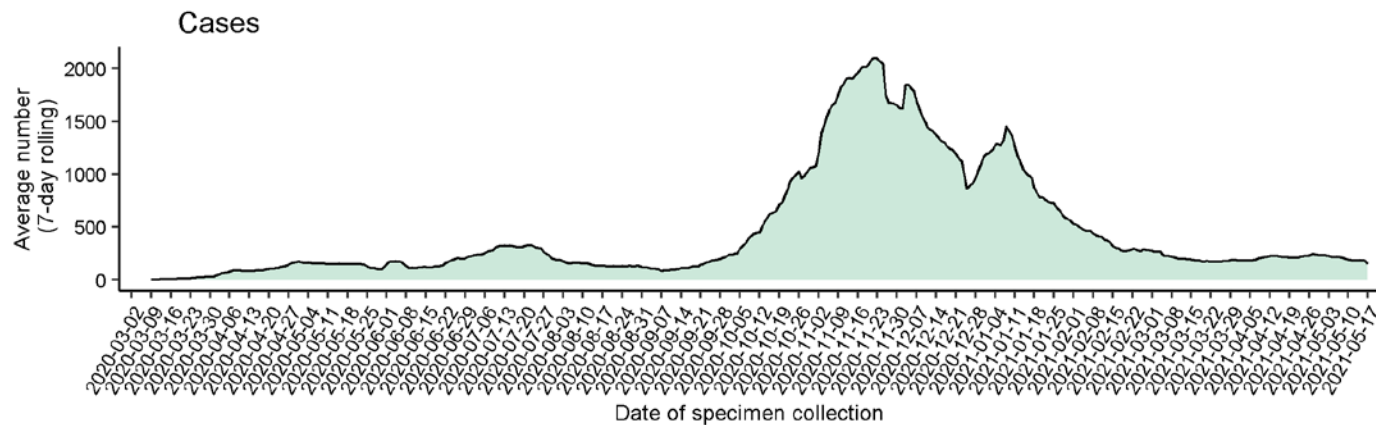
1190 S. St. Francis Drive • Santa Fe, NM 87505 • Phone: 505-827-2613 • Fax: 505-827-2530 • nmhealth.org

Statewide R-effective has decreased to 0.9.



Courtesy of Presbyterian Healthcare Services – May 17, 2021.

Average number (7-day rolling average) of cases, hospitalizations, and deaths over time



Note: Cases, hospitalizations, and deaths may not yet be reported in 7 or more days.

As of 5/17/21



Key

Low Level Endemic
<1.0

Approaching Low
Level Endemic
1.0

Requiring further
mitigation **>1.0**

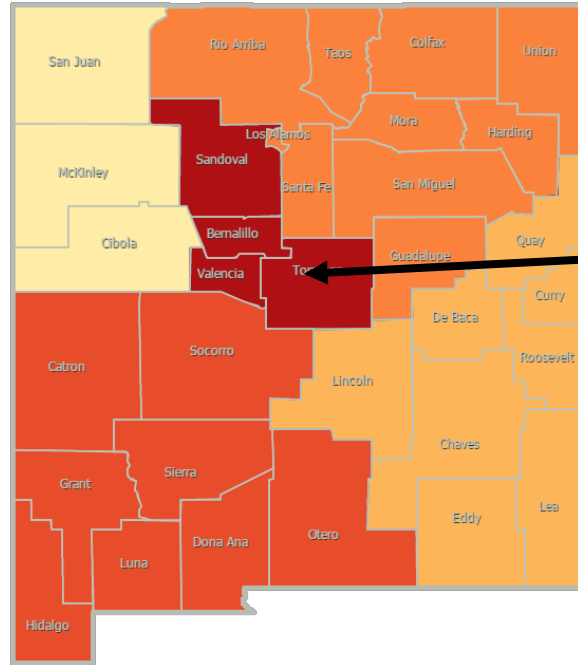
Northwest
R_effective 0.9 ↓

Northeast
R_effective 1.1 ↑

Metro
R_effective 0.8 ↓

Southwest
R_effective 0.9 ↓

Southeast
R_effective 0.9 ↓



As of May 3, 2021

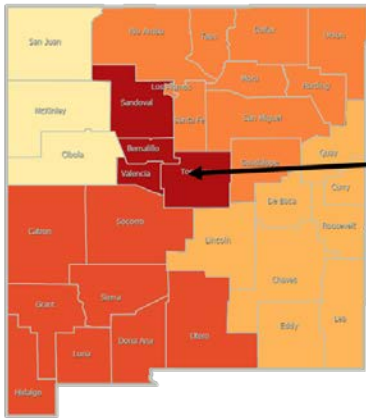
Northwest
R_effective 1.1 ↓

Northeast
R_effective 0.9 ↓

Metro
R_effective 1.1 ↑

Southwest
R_effective 1.0 =

Southeast
R_effective 1.1 ↓

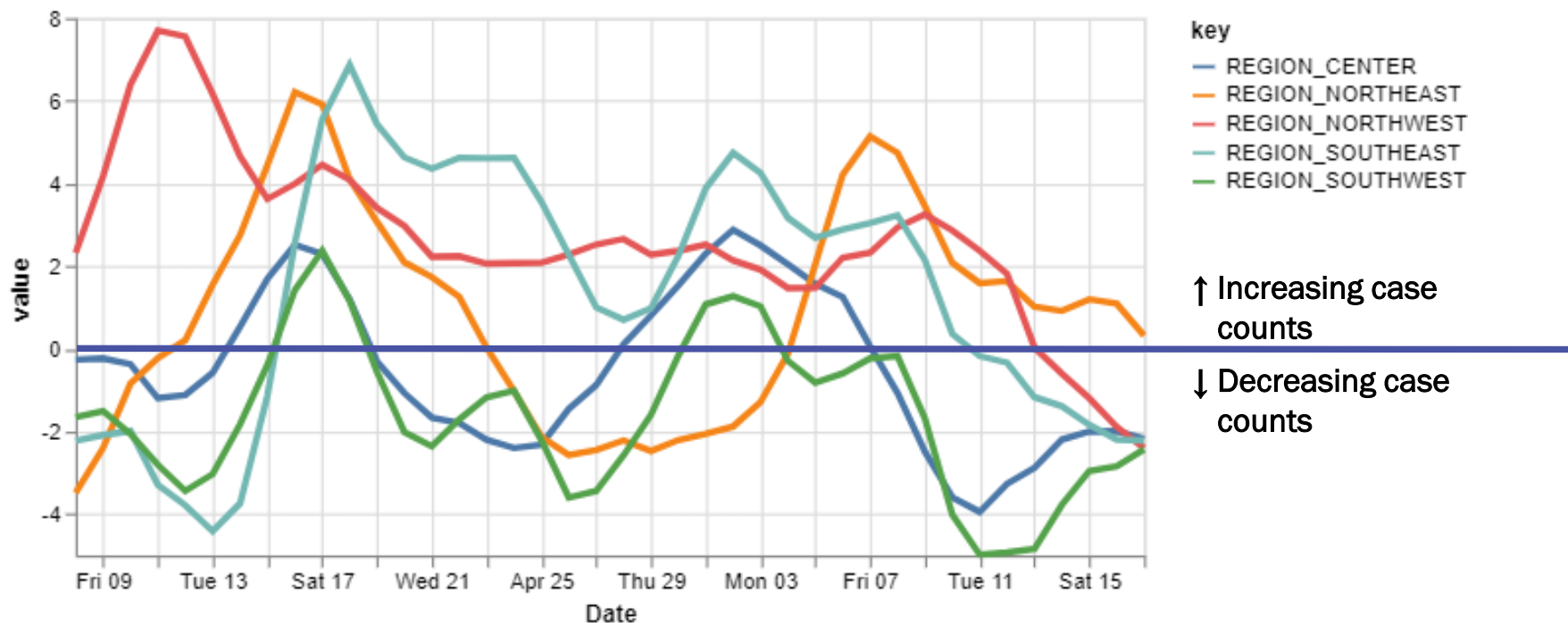


Region	R-effective	95% Confidence Interval
State	0.9	[0.5, 1.4]
Metro	0.8	[0.2, 1.5]
Northeast	1.1	[0.0, 2.6]
Northwest	0.9	[0.0, 2.0]
Southeast	0.9	[0.0, 2.4]
Southwest	0.9	[0.0, 2.2]

Courtesy of Presbyterian Healthcare Services – May 17, 2021.

All regions have growth rates near or below 0.

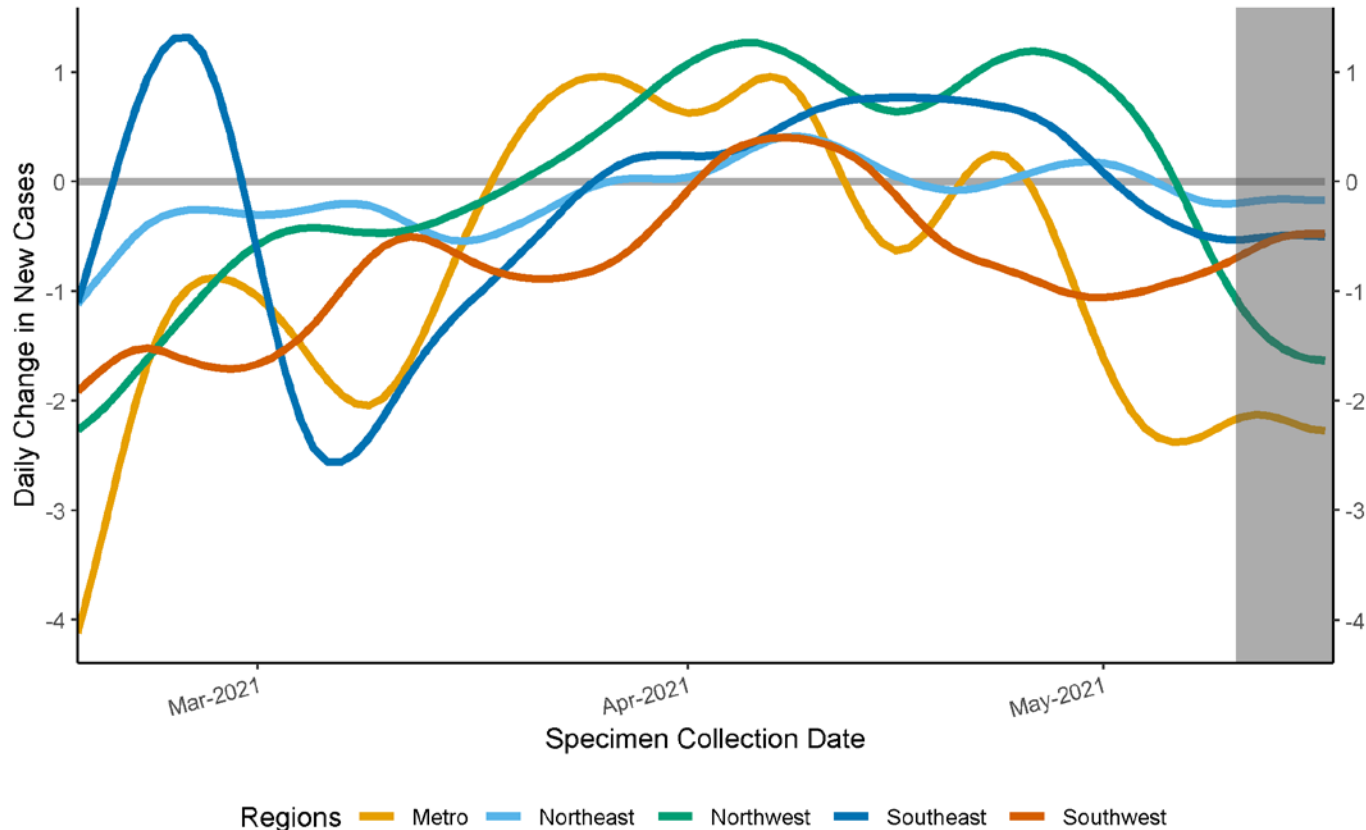
14-day relative growth rate (%), Regions



Courtesy of Presbyterian Healthcare Services – May 17, 2021.

Epidemic Growth Acceleration

Daily Change in New COVID-19 Cases, by New Mexico Region, as of May 17, 2021



Region	Growth Acceleration May 10, 2021
Metro	-2.2
Northeast	-0.2
Northwest	-1.0
Southeast	-0.5
Southwest	-0.7

*Positive specimens collected in the last 7 or more days may not yet be reported to NMDOH. Case counts and growth acceleration during this time are underestimated.

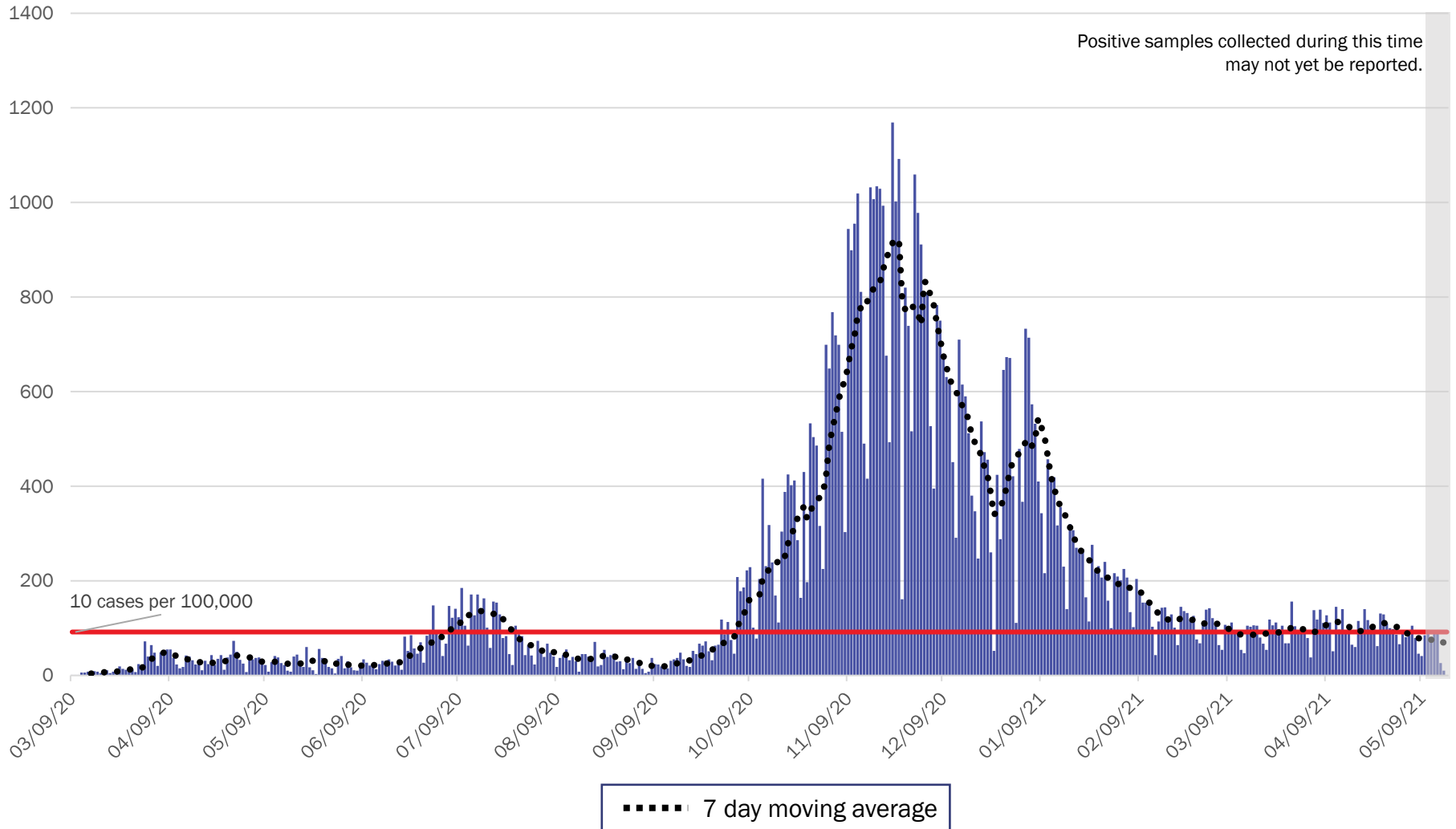
Source: Infectious Disease Epidemiology Bureau, Epidemiology and Response Division 5.17.2021, New Mexico Department of Health.



Investing for tomorrow, delivering today.

1190 S. St. Francis Drive • Santa Fe, NM 87505 • Phone: 505-827-2613 • Fax: 505-827-2530 • nmhealth.org

Metro Region Case Count by Collection Date with 7 Day Moving Average May 17, 2021



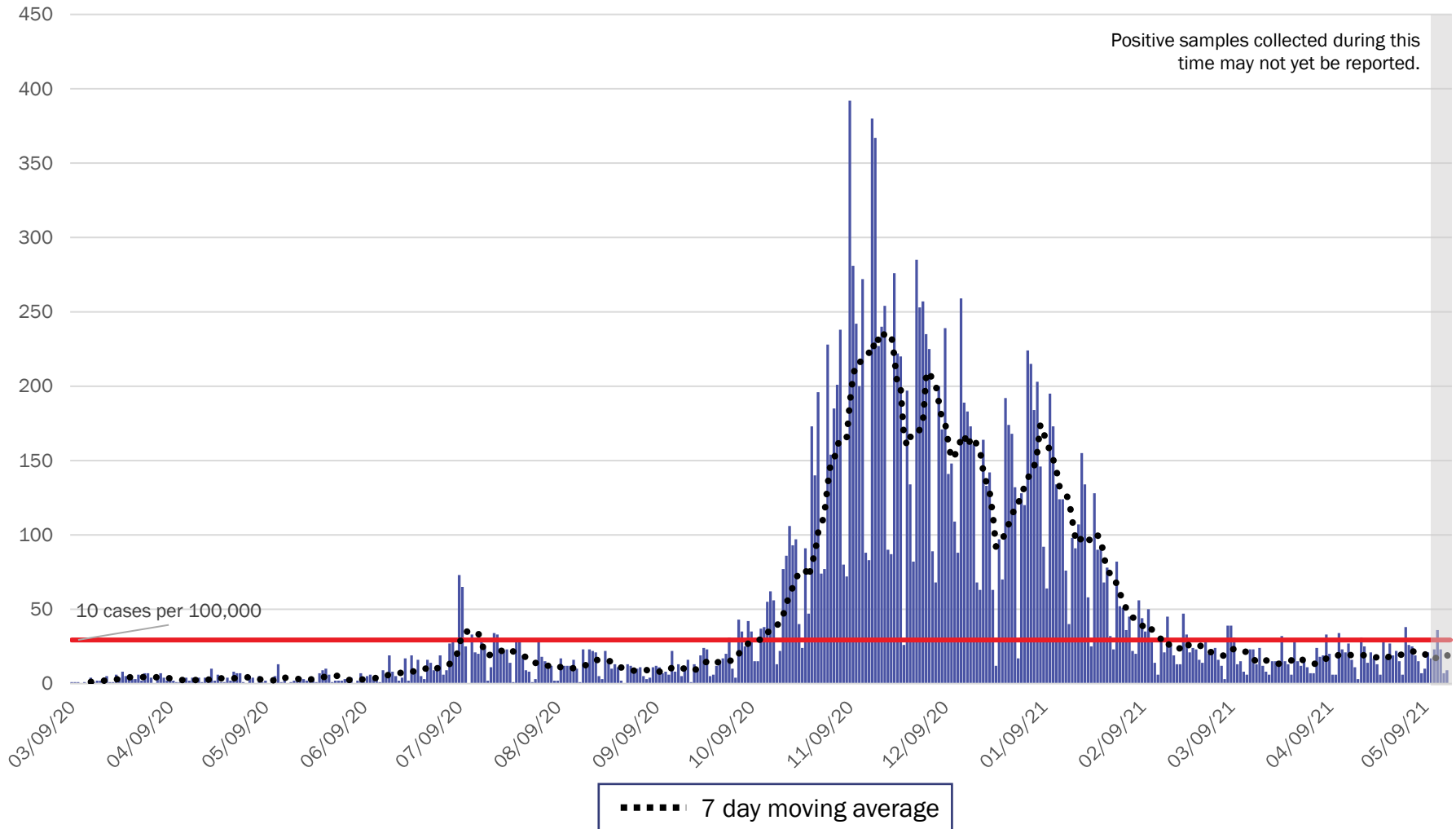
Source: Infectious Disease Epidemiology Bureau, Epidemiology and Response Division 5.17.2021, New Mexico Department of Health.



Investing for tomorrow, delivering today.

1190 S. St. Francis Drive • Santa Fe, NM 87505 • Phone: 505-827-2613 • Fax: 505-827-2530 • nmhealth.org

Northeast Region Case Count by Collection Date with 7 Day Moving Average May 17, 2021



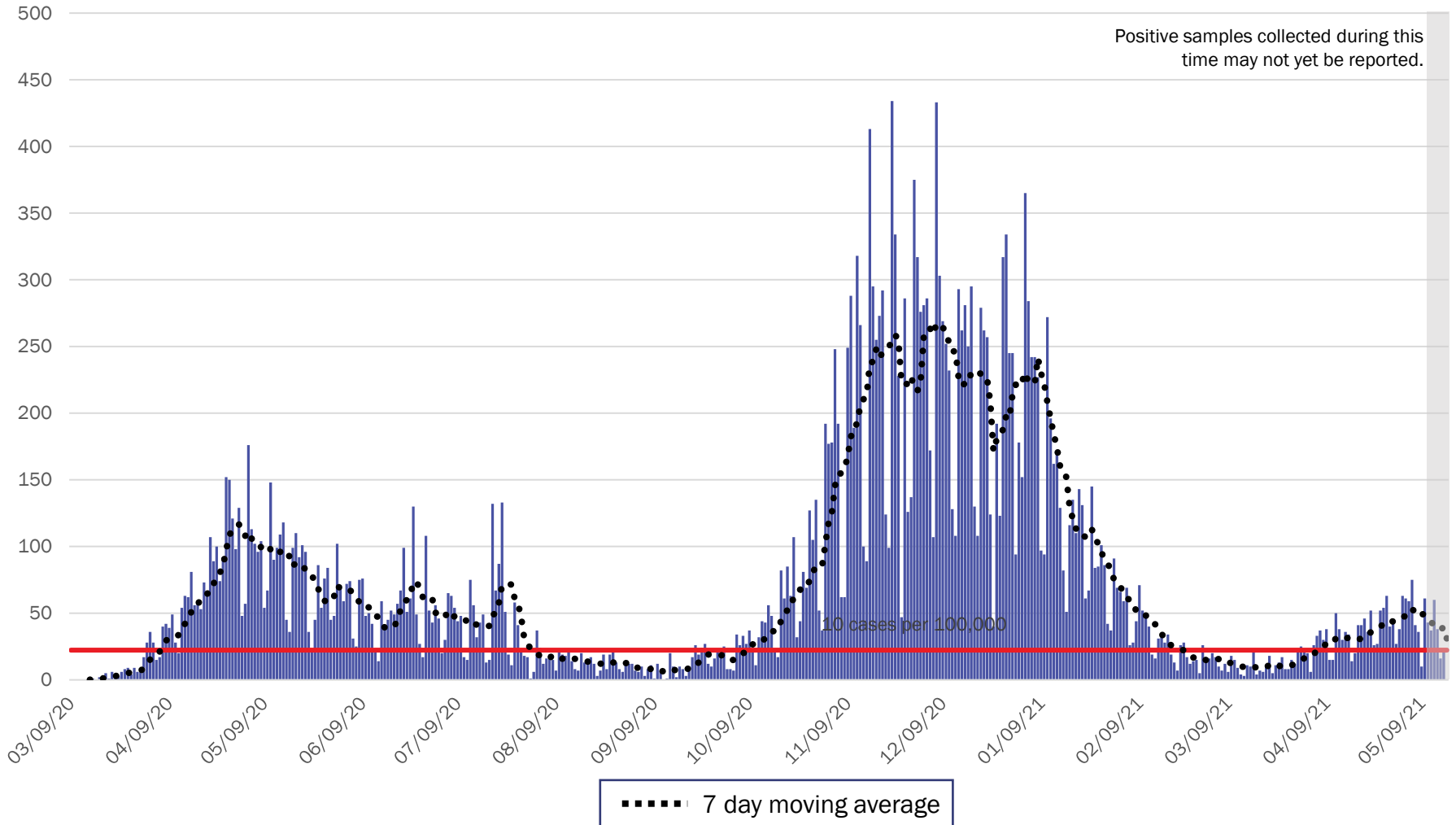
Source: Infectious Disease Epidemiology Bureau, Epidemiology and Response Division 5.17.2021, New Mexico Department of Health.



Investing for tomorrow, delivering today.

1190 S. St. Francis Drive • Santa Fe, NM 87505 • Phone: 505-827-2613 • Fax: 505-827-2530 • nmhealth.org

Northwest Region Case Count by Collection Date with 7 Day Moving Average May 17, 2021



Source: Infectious Disease Epidemiology Bureau, Epidemiology and Response Division 5.17.2021, New Mexico Department of Health.

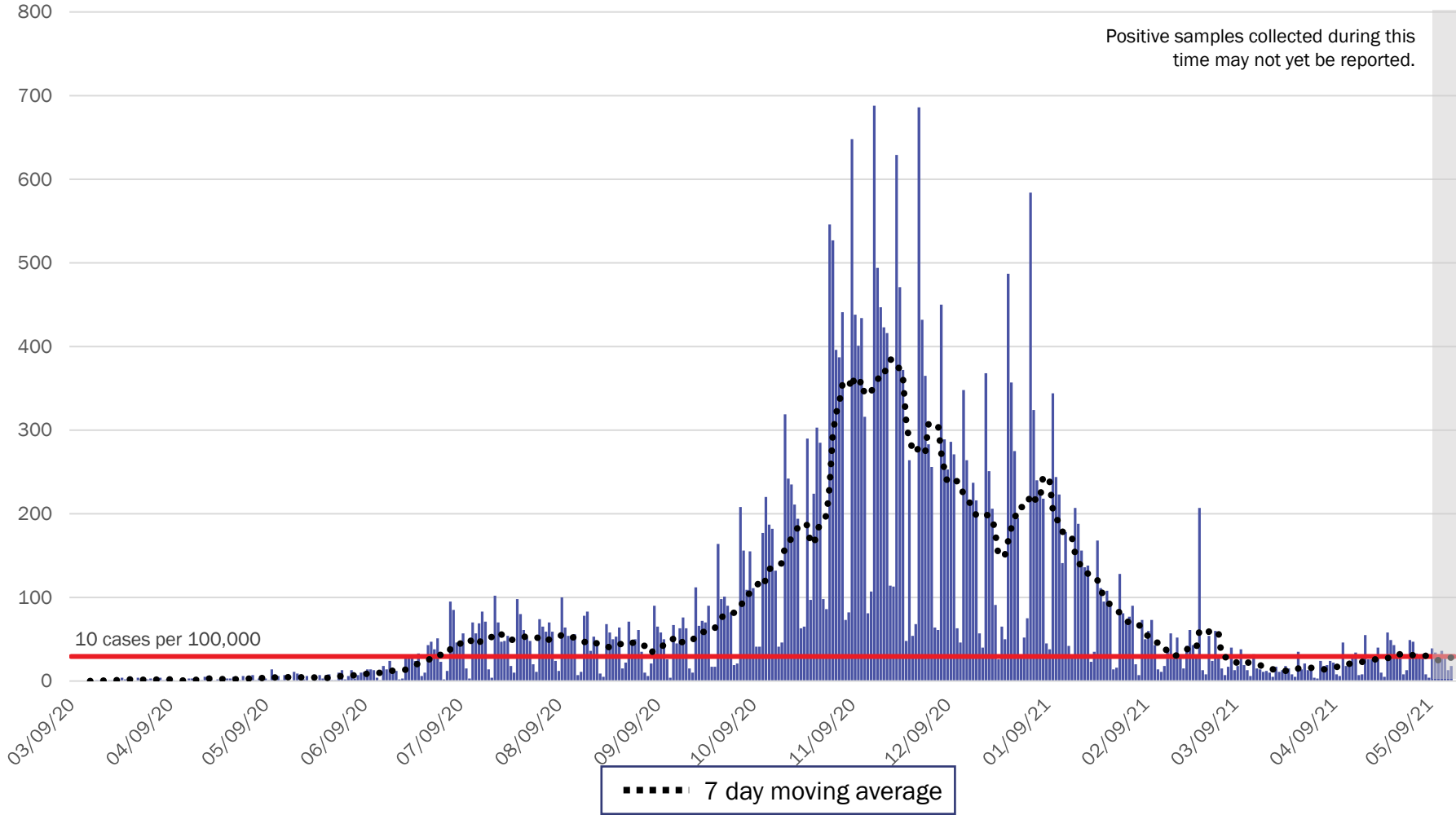


Investing for tomorrow, delivering today.



1190 S. St. Francis Drive • Santa Fe, NM 87505 • Phone: 505-827-2613 • Fax: 505-827-2530 • nmhealth.org

Southeast Region Case Count by Collection Date with 7 Day Moving Average May 17, 2021



Source: Infectious Disease Epidemiology Bureau, Epidemiology and Response Division 5.17.2021, New Mexico Department of Health.

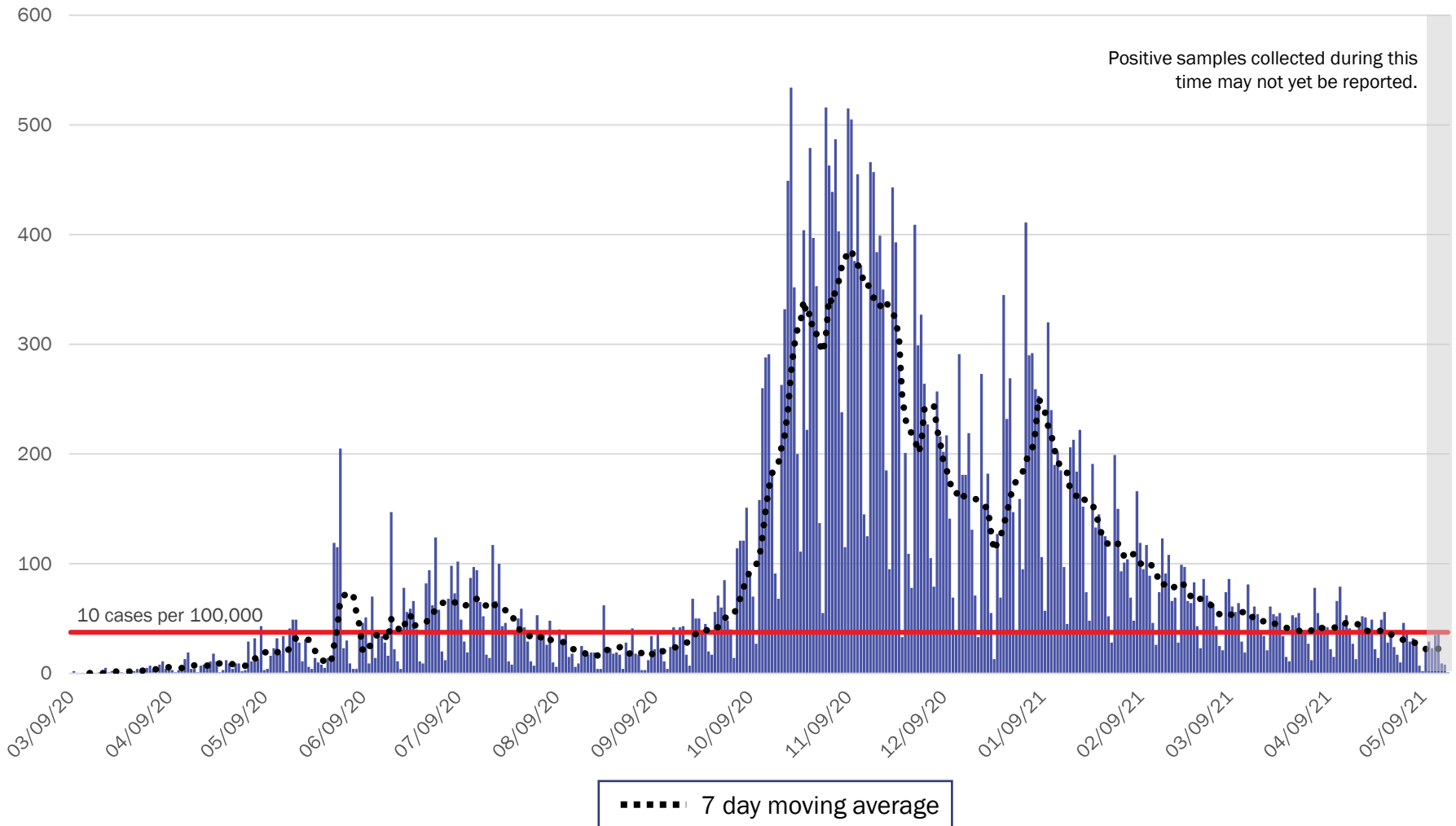


Investing for tomorrow, delivering today.



1190 S. St. Francis Drive • Santa Fe, NM 87505 • Phone: 505-827-2613 • Fax: 505-827-2530 • nmhealth.org

Southwest Region Case Count by Collection Date with 7 Day Moving Average May 17, 2021



Source: Infectious Disease Epidemiology Bureau, Epidemiology and Response Division 5.17.2021, New Mexico Department of Health.



Investing for tomorrow, delivering today.

1190 S. St. Francis Drive • Santa Fe, NM 87505 • Phone: 505-827-2613 • Fax: 505-827-2530 • nmhealth.org

New Mexico Status Updates

- Case count: Statewide, daily case counts have reached a plateau.
- Hospitalizations: COVID-19 hospitalizations may have reached a plateau.
- Deaths: COVID-19 deaths may have reached a plateau.

For more information, please visit the [Epidemiology Reports](https://cv.nmhealth.org/epidemiology-reports/) page on the NMDOH COVID-19 website: <https://cv.nmhealth.org/epidemiology-reports/>